



COMPETITIVE DATA

NO: WABCO-777B

DATE: MARCH 1970

THIS MATERIAL IS REPRODUCED FOR THE SOLE PURPOSE OF ENABLING PROSPECTIVE PURCHASERS TO MAKE COMPARISONS BETWEEN GALION'S PRODUCTS AND THOSE OF COMPETITIVE MANUFACTURER. THE GALION IRON WORKS & MFG. COMPANY MAKES NO REPRESENTATION AS TO THE ACCURACY OR CURRENT STATUS OF THIS MATERIAL.

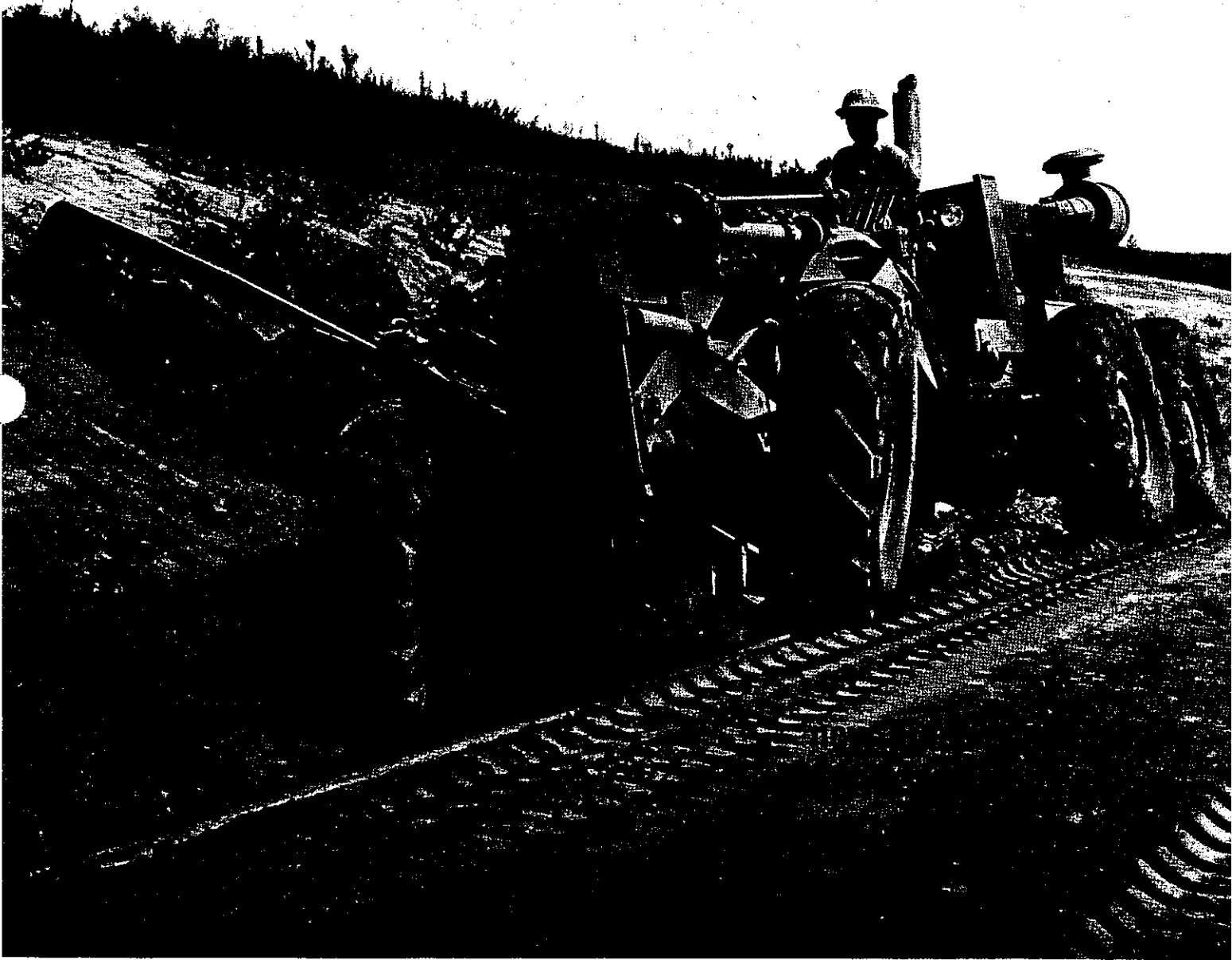
REPRODUCED FROM: D-b-MG389

FILE IN SECTION: H
(Replaces same dated Sep. 69)

THE GALION IRON WORKS & MFG. CO.

GALION OHIO

D SERIES WABCO GRADERS



777B

STANDARD & POWER-Flow[®] MODELS

SPECIFICATIONS

777B STANDARD

777B POWER-Flow

WEIGHTS (approximate) w/std. equipment, no accessories, Total On Front Wheels On Rear Wheels	with GM engine		with Cummins engine		with GM engine		with Cummins engine	
	31,000 lbs (14,061 kg)	9,300 lbs (4,218 kg)	31,200 lbs (14,152 kg)	9,300 lbs (4,218 kg)	31,150 lbs (14,130 kg)	9,300 lbs (4,218 kg)	31,350 lbs (14,220 kg)	9,300 lbs (4,218 kg)
ENGINE, Diesel, rubber mounted Horsepower, Maximum Net RPM Number of Cylinders Bore Stroke Displacement, cubic inches Electric starting equipment standard	GM 6-71		Cummins H-743-C		GM 6-71		Cummins N-743-C	
	175	160	190	160	220	201	220	201
	1800	1800	2000	2000	2000	2000	2100	2100
	6	6	6	6	6	6	6	6
	4 1/4" (108 mm)	4 1/4" (108 mm)	5 1/8" (130,1 mm)	5 1/8" (130,1 mm)	4 1/4" (108 mm)	4 1/4" (108 mm)	5 1/8" (130,1 mm)	5 1/8" (130,1 mm)
	5" (127 mm)	5" (127 mm)	6" (152,4 mm)	6" (152,4 mm)	5" (127 mm)	5" (127 mm)	6" (152,4 mm)	6" (152,4 mm)
	425.6 (6,97 liters)	425.6 (6,97 liters)	743 (12,17 liters)	743 (12,17 liters)	425.6 (6,97 liters)	425.6 (6,97 liters)	743 (12,17 liters)	743 (12,17 liters)
12 volt	12 volt	24 volt	24 volt	12 volt	12 volt	24 volt	24 volt	
CLUTCH	Standard, Oil Type		Standard, Oil Type		Standard, Oil Type		Standard, Oil Type	
TRANSMISSION	Constant-Mesh		Constant-Mesh		Transmission and Torque Converter		Transmission and Torque Converter	
SPEEDS IN MPH and (Kilometers per Hour)	Forward		Reverse		Forward		Reverse	
	2.2 (3,5)	3.2 (5,1)	1.8 (2,9)	3.6 (5,8)	3.5 (5,6)	7.0 (11,3)	3.1 (5,0)	6.2 (10,0)
	4.4 (7,1)	6.2 (10,0)	8.1 (13,0)	13.1 (21,1)	15.6 (25,1)	25.1 (40,4)	13.9 (22,4)	22.3 (35,9)
	9.9 (15,9)	14.0 (22,5)	Creep Gears (Opt.)					
	16.0 (25,7)	22.8 (36,7)	Creep, First .26 (.42)					
			Second .51 (.82)					
			Third 1.2 (1,9)					
SERVICE CAPACITIES	Gallons Liters		Gallons Liters		Gallons Liters		Gallons Liters	
	(U.S. Std.)		(U.S. Std.)		(U.S. Std.)		(U.S. Std.)	
	82 (310)	20 (76)	82 (310)	20 (76)	82 (310)	20 (76)	82 (310)	20 (76)
	3.5 (13)	17.25 (68)	5 (19)	17.25 (68)	3.5 (13)	10 (38)	5 (19)	10 (38)
						13 (49)		13 (49)

GENERAL

OVERALL MEASUREMENTS

Length	27'1" (8,26 m)
Width	8'0" (2,44 m)
Height, with cab	10'7" (3,23 m)
Height, without cab, top of steering wheel	7'8" (2,33 m)
Wheelbase	19'11" (6,07 m)
Bladebase	9'1 3/4" (2,78 m)
Tread, Front	79 1/2" (2,01 m)
Tread, Rear	81 1/2" (2,07 m)
Distance between centers of tandem wheels	64 1/2" (1,64 m)
Turning Radius, measured to outside front wheel	40'6" (12,34 m)

OPERATOR'S PLATFORM

Size	53 1/4" x 25 5/8" (1,35 m x 0,65 m)
Height, above ground	51" (1,30 m)

FRAME

All-welded Continuous Box-type Construction	
Basic Structural Members, Channels	
Average weight of complete frame structure per ft.	250 lbs. (345 kg/m)

DRAWBAR

All-welded, Double Bar	6" x 2" (15,24 cm x 5,08 cm)
Connections	Ball and Socket

CONTROLS

Power-Operated	Hydraulic over Mechanical
----------------	---------------------------

CIRCLE

Diameter	63" (1,6 m)
"F" Section Steel Angle	4 1/4" - 5 1/8" x 6" x 1 1/4" (10,80 cm - 13,81 cm x 15,24 cm x 3,18 cm)
Circle Reverse (power operated)	360°

BLADE ASSEMBLY

Length and Width (measured around curve)	13' x 28" (3,96 m x 71,1 cm)
Material, Moldboard, H.C. steel	7/8" (2,22 cm)

BLADE WORKING RANGE

Lift for ground clearance	18" (45,72 cm)
Side-Shift with control, moldboard centered	37 1/2" (95,2 cm) R and L
Pitch Positions, number	11

Bank Cutting Angle, maximum degrees	90°
Shoulder Reach, outside tires	94" (238,76 cm) R and L

LIFTING MECHANISM

Type, power-operated	Worm and Gear
Lifting Speed, inches per second	3.0 (7,6 cm)
Lift Shafts Diameter	3 1/2" (8,89 cm)
Lift Shaft Bearings	Bronze Bushings
Lift Arms	Forgings
Lift Arm Connection to Shaft	Spined
Lift Links (telescoping) O.D. & I.D.	2 5/8" x 1 7/8" (6,67 cm x 4,76 cm)
Lift Link Connections Enclosed	Ball and Socket
Lift Link Adjustment for Wear	Shims

AXLE, FRONT

Welded Arch Truss Const. size bars	6" x 1" (15,24 cm x 2,54 cm)
Spindles, diameter at bearings	3" - 2 1/4" (7,62 cm - 5,72 cm)
Spindles, Material	Forged, Heat-treated Alloy Steel
Ground Clearance, center	24 1/2" (62,2 cm)

AXLE, REAR, Full-floating

Construction	Two-Piece, Rigid
Axle Material	Alloy Steel, Heat-treated
Axle Diameter, at bearings	3 1/2" (8,89 cm)
(Axle drives only; carries no weight)	
Axle Bearings	Heavy Duty Ball
Foot Brake on all 4 Tandem Wheels	
and Transmission	Hydraulic w/assist
Hand Brake on Transmission	Mechanical

TANDEM DRIVE

Housings	21" x 7 3/4" (53,34 cm x 19,69 cm)
Wheel Axles, diameter at bearings	3 1/2" - 2 3/4" (8,89 cm - 6,99 cm)

TIRES, Tubeless

Front	14.00-24, 12 pr, traction (G-2)
Rear	14.00-24, 12 pr, traction (G-2)

SCARIFIER

Weight, approx. (lbs.)	1585 (719 kg)
Teeth, Number (3 1/2" x 1 1/4" [8,89 cm x 3,18 cm] with replaceable points)	9
Teeth, Spacing (center to center)	5 5/8" (14,29 cm)
Width of Cut	47" (1,19 m)
Pitch Positions, number	3

WESTINGHOUSE AIR BRAKE COMPANY
CONSTRUCTION EQUIPMENT DIVISION
2301 N. E. Adams Street, Peoria, Ill. 61601

Specifications subject to change without notice

Litho in U.S.A. II-69