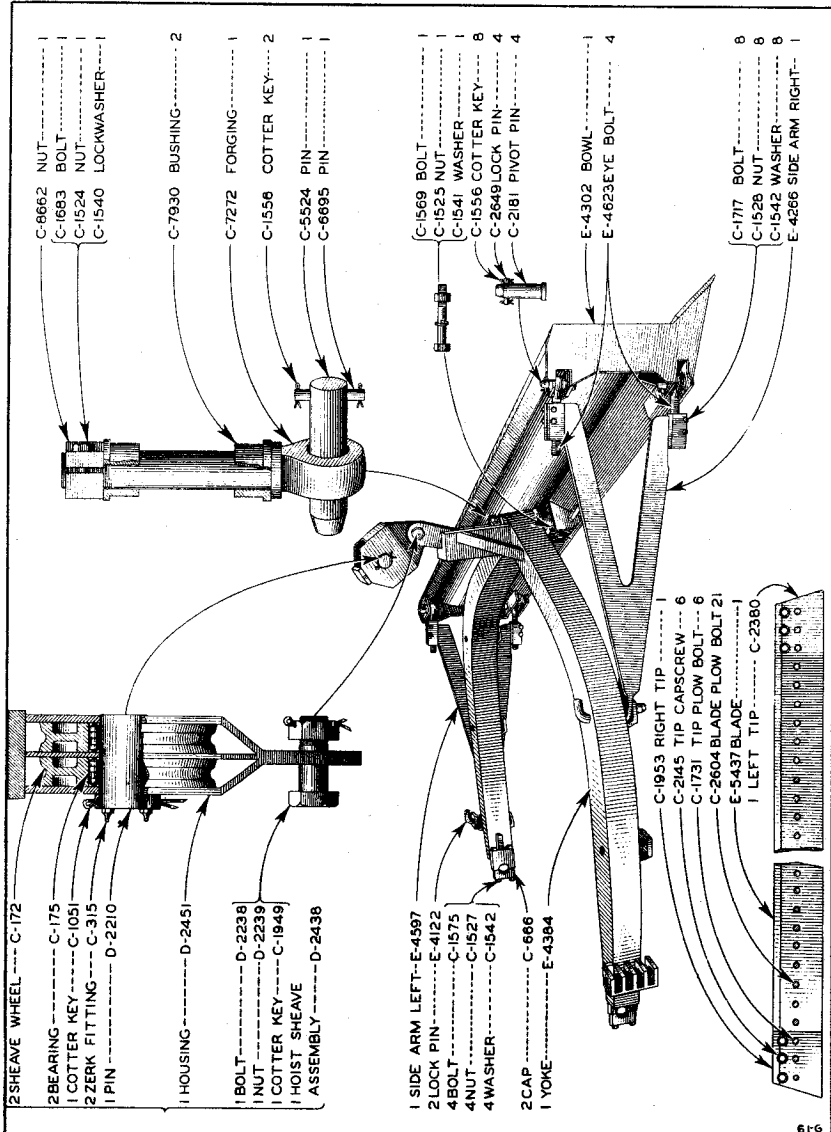


ANGLEDOZER

Model C4

R. G. LeTOURNEAU, Inc.

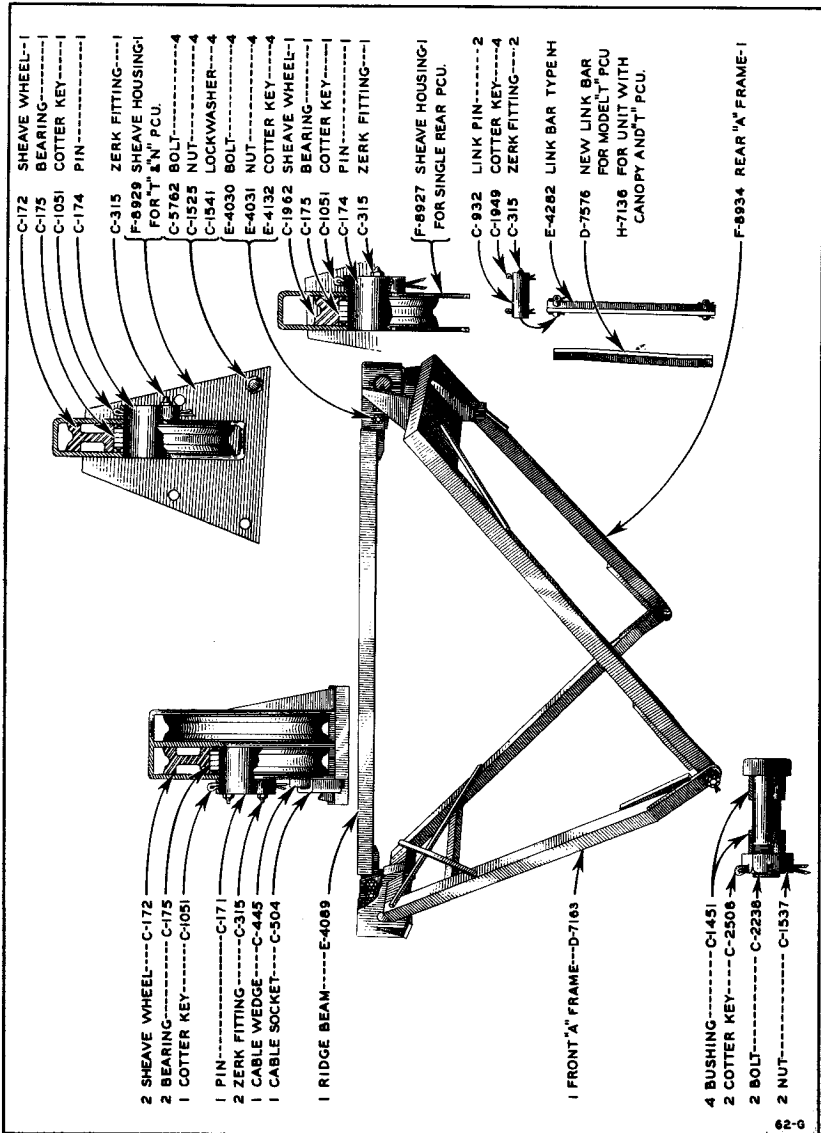


61-6

ANGLED OZER BOWL ASSEMBLY

ALWAYS GIVE MACHINE NUMBER WHEN ORDERING PARTS

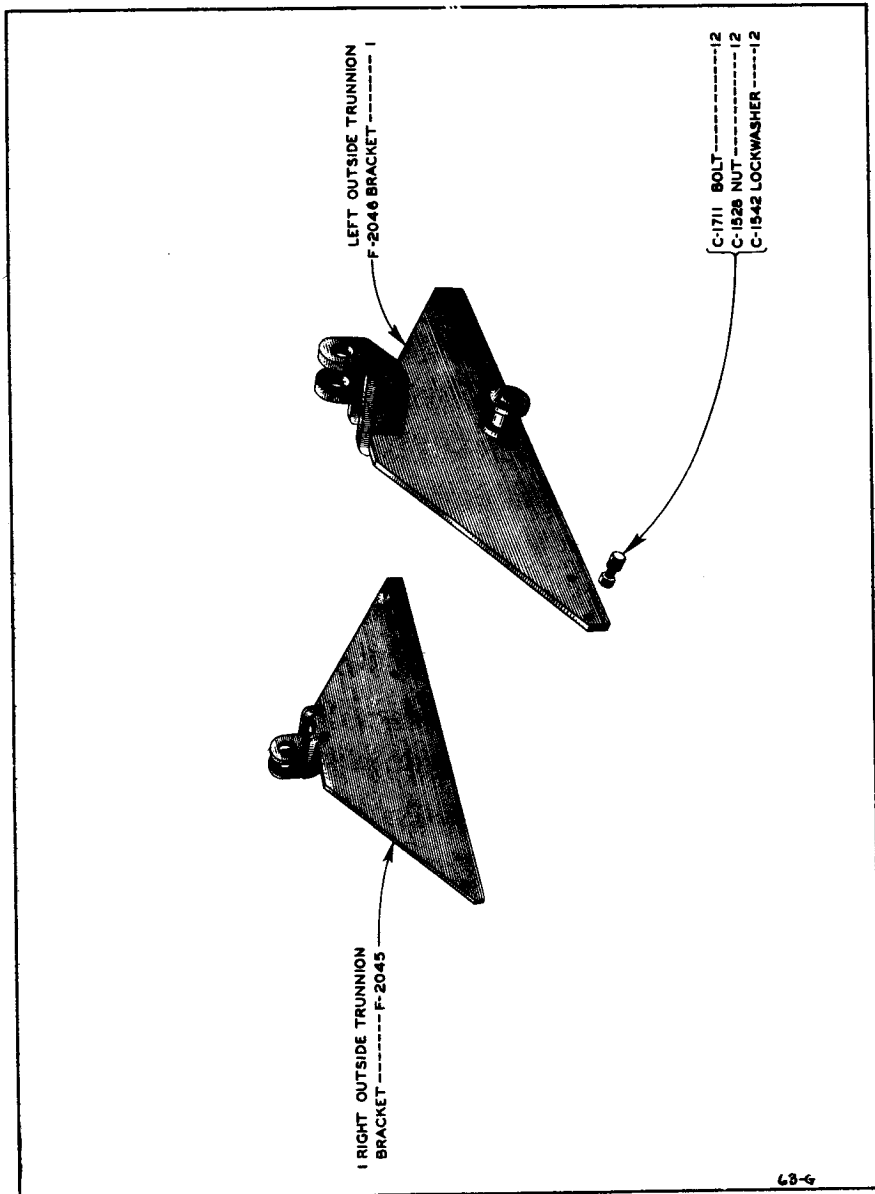
PRINTED IN U. S. A.



A FRAME GROUP F-9059

ALWAYS GIVE MACHINE NUMBER WHEN ORDERING PARTS

PRINTED IN U. S. A.



ALWAYS GIVE MACHINE NUMBER WHEN ORDERING PARTS

PRINTED IN U.S.A.

LETOURNEAU *Parts* **PRICE LIST**

FOR
UNITED STATES GOVERNMENT

CONTRACT **TPS-47788**
JULY 1, 1942 TO JUNE 30, 1943

Field Officers who may wish to procure parts under this Schedule, but who have not been notified officially of its existence, are urged to communicate promptly with their Departments in Washington, D. C.

PRICES

All prices in this list are net F.O.B. Peoria, Ill., Stockton, Calif., or any LeTourneau Distributor.

Prices are net as per this list, and are subject to change by published amendment. Wholly new part numbers and prices may be released from time to time, and notice thereof will be provided by addenda sheets.

When a new part is released as an improvement of an old part, the new part will be charged whether higher or lower than the price published for the superseded part.

When parts and attachments are offered for resale outside of the continental U.S.A., the prices in this list are subject to the additions of all the costs of import peculiar to the country to which they may be shipped. Such costs ordinarily include import duties, sales and other taxes, brokerage fees, and any other expenses incidental to the importation of the goods. Prices, Specifications and Weights Subject to Change Without Notice.

ORDERS

To avail the Government of economies in transportation, orders irrespective of size should be drawn on the nearest LeTourneau Distributor or branch. Invoices will be received from and payment should be made to the Distributor on which orders are drawn.

When ordering parts by wire, ALWAYS show the order number. It may be necessary to refer to the order later, and we can give immediate information if a specific number is assigned to each order. A written confirmation of all wire, phone, and cable orders should be mailed the same day and should be marked "CONFIRMATION" to prevent duplication of orders.

TRANSPORTATION

Parts will move on Government bill of lading if same is furnished. In all other cases parts will be shipped by means directed in the order, or by most economical means if no directions are given.

When Government bill of lading is not furnished, and no specific shipping instructions are given, transportation charges from Distributor's store, factory parts depot, or factory on which order is placed will be prepaid to destination and billed as a separate item on the invoice supported by receipted bill for transportation charges.

UNDER NO CIRCUMSTANCES WILL TRANSPORTATION CHARGES BE MERGED WITH PARTS PRICES. Parts prices thus inflated will not check against the contract price, and therefore will not pass audit in the General Accounting Office or elsewhere.

PARTS TO BE RETURNED

Permission to return parts or equipment should be received before making shipment. When requesting return of parts or equipment, itemize and show invoice numbers and date of original purchase.

FIELD OFFICERS:

We are assured by the Treasury Department that transportation as above can and should be paid. Please refrain from ordering parts from this schedule if you cannot pay transportation, for in such cases the charges become a claim in the G. A. O., involving much effort, delay and expense before they are recovered. Before refusing to pay transportation charges please communicate with your Department at Washington, D. C., with copy to R. G. LeTourneau, Inc., Peoria, Illinois.

IMPORTANCE OF SERIAL NUMBERS

Serial numbers of equipment should be given on all parts orders not intended for stock. This is especially important for Power Control Unit spline shafts, ANGLED OZER and Bulldozer A-Frame link bars, trunnion brackets, sheave housings, wheels, axles, gears, ROOTER shanks, shank points, and all large structures. When the equipment serial number is not given with the parts order, it is necessary that we wire for this information, with consequent delay to shipment.

RIVETS

Rivets are furnished with all Power Control Unit cones and brake linings and are included in the price of the lining.

WHEEL OIL SEAL

When ordering wheel oil seal retainers, oil seals should also be added to the order when the shipment is being made direct to the contractor.

Prices, weights, and specifications are subject to change without notice.

Peoria, Ill. • R. G. LeTOURNEAU, Inc. • Stockton, Calif.

CABLE ADDRESS "BOBLETORNO"

PRINTED IN U. S. A.

MODEL "C4" ANGLEDZOZER FOR MODEL D4 CATERPILLAR TRACTOR PARTS PRICE LIST

PAGE 1

PART No.	Qty.	DESCRIPTION	PRICE EACH	WEIGHT LBS. OZ.
C-171	1	DOUBLE NARROW SHEAVE PIN	\$ 3.70	8 4
C-172	5	LARGE NARROW SHEAVE WHEEL	5.20	12 —
C-174	1	SINGLE NARROW SHEAVE PIN	2.38	5 —
C-175	5	HYATT BEARING No. RA-212	2.38	1 8
C-315	7	1/8" STRAIGHT GREASE FITTING (LINCOLN No. 5000)	.06	— —
C-445	1	SMALL CABLE WEDGE	.38	— 8
C-504	1	SMALL CABLE SOCKET	.68	1 4
C-666	2	TRUNNION CAP	2.60	4 —
C-932	2	LINK PIN	1.33	3 —
C-1051	3	3/8"x5" COTTER KEY	.06	— 4
C-1451	4	TRUNNION BUSHING	1.53	— 8
C-1524	1	1/2" NF HEX NUT	.03	— —
C-1525	5	5/8" NC HEX NUT	.04	— —
C-1527	4	3/4" NC HEX NUT	.05	— —
C-1528	20	3/4" NF HEX NUT	.05	— —
C-1537	2	1 1/2" NC CASTELLATED HEX NUT	.63	1 2
C-1540	1	1/2" LOCKWASHER	.01	— —
C-1541	5	5/8" LOCKWASHER	.02	— —
C-1542	24	3/4" LOCKWASHER	.03	— —
C-1556	10	3/16"x1" COTTER KEY	.01	— —
C-1569	1	5/8"x6" MACHINE BOLT	.18	— 12
C-1575	4	3/4"x10" MACHINE BOLT	.30	1 8
C-1683	1	1/2"x2 1/2" NF CAPSCREW	.08	— —
C-1711	12	3/4"x2 1/2" NF CAPSCREW	.20	— 8
C-1717	8	3/4"x4" NF CAPSCREW	.26	— 8
C-1731	6	5/8"x2" PLOW BOLT—No. 1 HEAD	.08	— 4
C-1949	5	1/4"x3" COTTER KEY	.01	— —
C-1953	1	RIGHT END BLADE	5.79	21 8
C-2145	6	BLADE TIP CAP	.36	— 8
C-2181	4	TOP PIVOT PIN	2.41	3 4
C-2238	2	TRUNNION BOLT	1.50	— 6
C-2380	1	LEFT BLADE TIP	5.79	21 8
C-2508	2	5/16"x3" COTTER KEY	.01	— —
C-2604	21	5/8"x1 3/4" PLOW BOLT—No. 3 Head	.08	— 4
C-2649	4	LOCK PIN	.53	— 4
C-5524	1	MAIN PIVOT PIN	2.88	5 4
C-5762	4	5/8"x1 1/2" NC CAPSCREW	.10	— —
C-6695	1	PIN KEY	.25	— —
C-7272	1	UNIVERSAL EYEBOLT	8.65	16 —
C-7930	2	UNIVERSAL BUSHING	3.30	2 —
C-8662	1	UNIVERSAL NUT	2.84	3 8
D-2210	1	DOUBLE SHEAVE PIN	3.98	9 —
D-2238	1	1 1/2"x3 7/8" NF BOLT	1.01	2 8
D-2239	1	1 1/2" NF CASTELLATED NUT	.62	— 8
D-2438	1	HOIST SHEAVE ASSEMBLY	37.18	88 —
D-2451	1	HOIST SHEAVE HOUSING	16.23	49 —
D-7163	1	FRONT A-FRAME STRUCTURE	102.50	300 —
D-7576	1	LINK BAR	8.41	26 4
E-4030	4	1"x3 1/4" NC BOLT	.43	1 —
E-4031	4	1" CASTELLATED HEX NUT	.28	— 6
E-4089	1	RIDGEBEAM STRUCTURE	26.98	79 —
E-4122	2	LOCK PIN	3.99	9 8
E-4132	4	1/2"x2" COTTER KEY	.01	— —
E-4266	1	SIDE ARM STRUCTURE	48.75	150 —
E-4302	1	BOWL STRUCTURE	222.50	700 —
E-4384	1	YOKE STRUCTURE	270.00	800 —
E-4597	1	SIDE ARM STRUCTURE	48.75	150 —

MODEL "C4" ANGLED OZER

2

PARTS PRICE LIST

PART No.	Qty.	DESCRIPTION	PRICE EACH	WEIGHT	
				LBS.	OZ.
E-4623	4	EYEBOLT	5.40	6	—
E-5437	1	BLADE	15.10	84	—
F-2045	1	RIGHT TRUNNION BRACKET	44.10	170	—
F-2046	1	LEFT TRUNNION BRACKET	44.10	170	—
F-8929	1	SHEAVE HOUSING	7.55	22	—
F-8934	1	REAR A-FRAME STRUCTURE	95.50	300	—