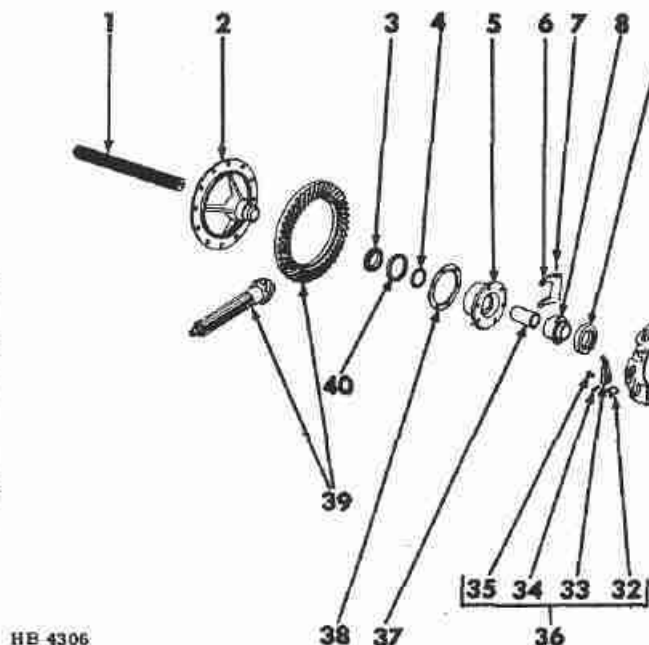




REF. NO.	PART NUMBER	DESCRIPTION
----------	-------------	-------------

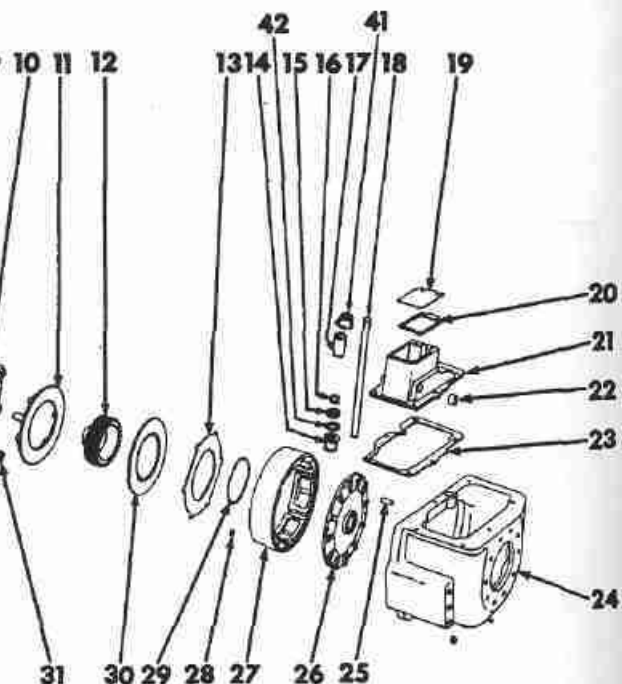
STEERING CLUTCH & HOUSING



HE 4306

REF. NO.	PART NUMBER	DESCRIPTION
----------	-------------	-------------

STEERING CLUTCH & HOUSING - Continued



1	675 846 R1	SHAFT, bevel gear			
2	635 383 R2	HUB, bevel gear (for Crawler Tractor prior Serial No. H 1230) (for Skidder prior Serial No. H 1051)			
2	676 033 R1	HUB, bevel gear (for Crawler Tractor Serial No. H1230 & up) (for Skidder, Serial No. H 1051 & up)			
3	567 846 R01	CONE, bevel gear brg (2)			
4	636 415 R91	SEAL, bevel gear brg retainer oil (2) (for Crawler Tractor prior Serial No. H 1230) (for Skidder prior Serial No. H 1051)			
4	676 032 R91	SEAL, bevel gear brg retainer oil (2) (for Crawler Tractor Serial No. H 1230 & up) (for Skidder Serial No. H 1051 & up)			
5	636 718 R91	RETAINER, bevel gear brg (2) (includes 635 386 R1, GUIDE) (for Crawler Tractor prior Serial No. H 1230) (for Skidder prior Serial No. H 1051)			
5	676 030 R91	RETAINER, bevel gear brg (2) (includes 635 386 R1, GUIDE) (for Crawler Tractor Serial No. H 1230 & up) (for Skidder Serial No. H 1051 & up)			
	178 840	3/8 x 1-1/8" Type 2 BOLT (4)			
	102 635	3/8" NUT (4)			
	103 321	3/8" 1k-WASHER (4)			
6	676 777 R1	FORK, steering clutch release (2)			
	178 840	3/8 x 1-1/8" Type 2 BOLT (4)			
	103 321	3/8" 1k-WASHER (4)			
7	635 088 R1	KEY, release fork (4)			
8	635 377 R1	SLEEVE, clutch release brg (2)			
9	359 957 R91	BEARING, clutch release (2)			
10	352 744 R91	PLATE, clutch back (2) (includes SEATS, 7911T)			
	7 911 T	Adjusting screw SEAT (6)			
	186 270	5/16 x 3-1/2" Type 2 BOLT (12)			
	635 401 R1	21/64 x 9/16 x 22 ga WASH. (as req'd)			
	102 634	5/16" NUT (12)			
	103 320	5/16" 1k-WASHER (12)			
10	635 557 R91	CLUTCH, steering (2)			
		composed of:			
		1 Package	353 246 R91		
		1 Plate	351 448 R1		
		1 Plate	352 744 R91		
		6 Spring	635 561 R1		
11	351 448 R1	PLATE, clutch pressure (2)			
12	636 416 R1	HUB, steering clutch driving (2)			
13	635 384 R2	PLATE, steering clutch driven (12)			
14	636 662 R1	BUSHING, clutch release shaft upper (2)			
15	Q 3 501	WASHER, 25/32 x 1-1/4 x 16 ga (2)			
16	154 665 R1	RING, release shaft retaining (2)			
17	636 747 R1	BUSHING, clutch release shaft lower			
18	635 387 R1	SHAFT, clutch release LH			
18	635 388 R1	SHAFT, clutch release RH			
19	635 049 R1	PLATE, housing inspection (2)			
	179 791	1/4 x 1/2" Type 2 BOLT (4)			
	103 319	1/4" 1k-WASHER (4)			
20	635 680 R2	GASKET, inspection plate (2)			

*Not Serviced Separately

PRINTED IN CANADA

REPRODUCED IN UNITED STATES OF AMERICA

CRAWLER TRACTORS

REF. NO.	PART NUMBER	DESCRIPTION
STEERING CLUTCH & HOUSING - Continued		
21	635 009 R12	COVER, steering clutch housing LH (Includes BUSHINGS, 635 060 R1)
21	635 010 R12	COVER, steering clutch housing RH (Includes BUSHINGS, 635 060 R1)
	179 841	3/8 x 1-1/4" Type 2 BOLT (12)
	103 321	3/8" 1k-WASHER (12)
22	635 060 R1	BUSHING, clutch housing cover (4)
23	635 679 R1	GASKET, clutch housing (2)
24	635 745 R11	HOUSING, steering clutch LH
24	635 746 R11	HOUSING, steering clutch RH (for Crawler Tractor prior Serial No. H 705 for 48" & 66" gauge width) (for Crawler Tractor prior Serial No. H 1011 for 38" gauge width) (for Skidder prior Serial No. H 1051)
24	676 101 R11	HOUSING, steering clutch LH
24	676 102 R11	HOUSING, steering clutch RH (for Crawler Tractor Serial No. H 705 & up for 48" & 66" gauge width) (for Crawler Tractor Serial No. H 1011 & up for 38" gauge width) (for Skidder Serial No. H 1051 & up) composed of:
		1 Bushing 636 682 R1
		1 Bushing 636 747 R1
		*1 Housing
		2 Pin 141 287
		1 Plug 172 538
	103 867	3/8" sq-hd PLUG (2)
	20 548 R1	5/8 x 1-3/4" Type 4 BOLT (2)
	179 889	1/2 x 2" Type 2 BOLT (8)
	179 892	1/2 x 2-3/4" Type 2 BOLT (2)
	103 323	1/2" 1k-WASHER (10)
	178 625	5/8" int-t 1k-WASHER (2)
25	141 287	PIN, 1/2 x 1-1/2" dowel (2)
26	635 381 R2	BASE, steering clutch (2)
	186 270	5/16 x 3-1/2" Type 2 BOLT (12)
	635 401 R1	21/64 x 9/16 x 22 ga WASHER (as req'd)
	102 834	5/16" NUT (12)
	103 320	5/16" 1k-WASHER (12)
27	635 375 R1	DRUM, steering clutch (2)
28	635 401 R1	WASHER, 21/64 x 9/16 x 22 ga (as req'd)
29	635 394 R1	WIRE, clutch driving hub (2)
30	675 848 R1	DISC, steering clutch friction (14)
31	635 561 R1	SPRING, clutch pressure (6)
32	51 461 D	SPRING, clutch release lever (3)
33	353 243 R91	LEVER, clutch release (3) (Includes 114 494, NUT & 352 745 R1, SCREW)
34	51 460 D	PIN, release lever (3)
	103 372	3/32 x 1/2" c-PIN (3)
35	352 745 R1	SCREW, clutch release lever adjusting (3)
	114 494	3/8" - NF jam NUT (3)

REF. NO.	PART NUMBER	DESCRIPTION
STEERING CLUTCH & HOUSING - Continued		
36	353 246 R91	PACKAGE, release lever service composed of:
		3 Lever 353 243 R91
		3 Pin 51 460 D
		3 Pin 103 372
		3 Spring 51 461 D
37	635 386 R1	GUIDE, steering clutch release brg (2)
38	635 395 R1	SHIM, .003" bevel gear brg retainer (as req'd)
38	635 386 R1	SHIM, .005" bevel gear brg retainer (as req'd)
38	635 397 R1	SHIM, .010" bevel gear brg retainer (as req'd)
39	675 836 R91	PACKAGE, transmission spline shaft & drive bevel gear
40	567 845 R91	CUP, bevel gear brg (2)
41	635 681 R1	BOOT, upper steering clutch release shaft bushing (2)
42	587 579 R1	"O" RING, steering clutch release shaft lower bushing (2)