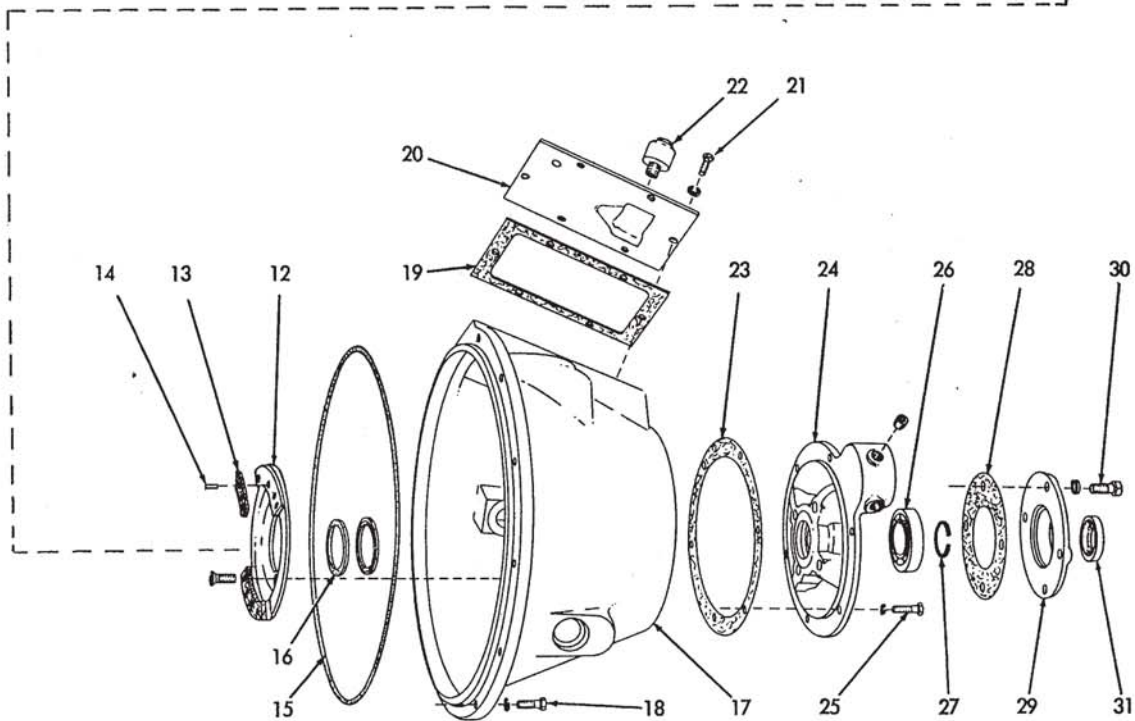


FIRST TYPE



ENGINE CLUTCH AND HOUSING (Oil clutch)

T-38175

ENGINE CLUTCH AND HOUSING

USAGE: Tractors with oil clutch. Optional on Model HD6A,B; also on early Model HD6E units. Standard on Model HD6AG; also on Model HD6E tractors serial No. 14484 and up.

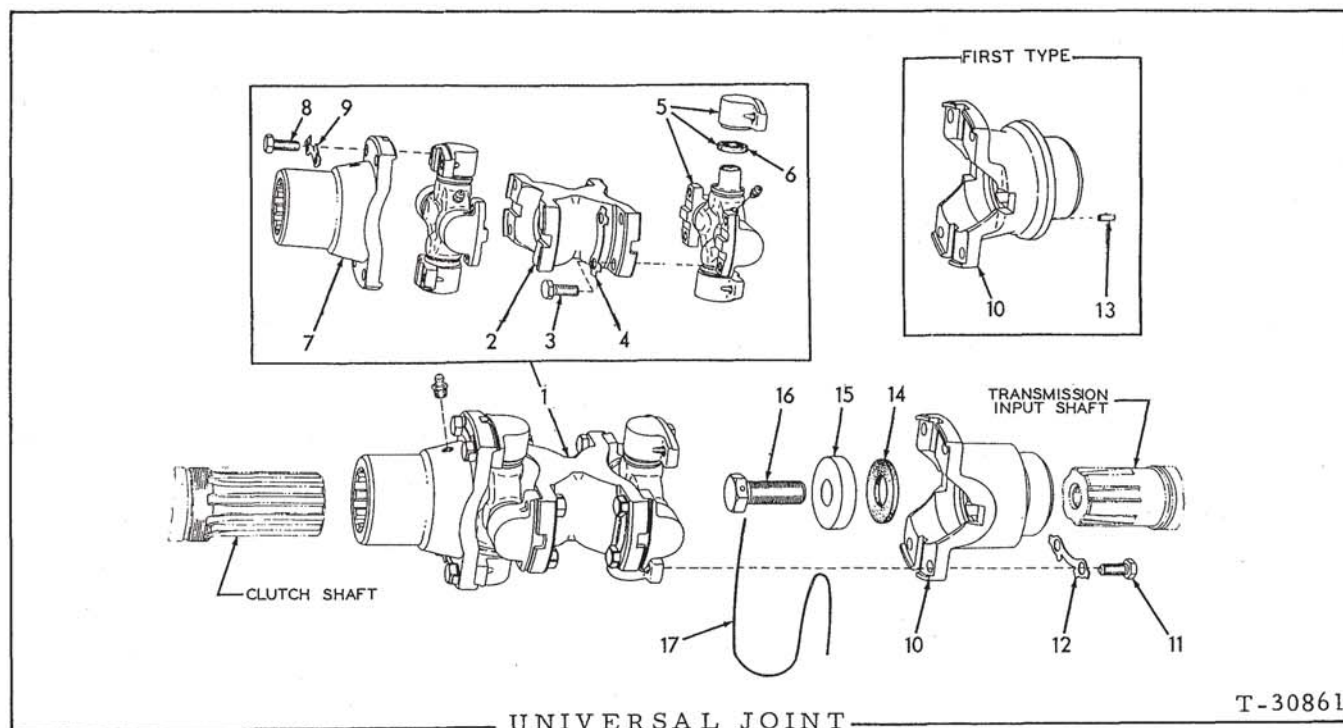
* Tractors prior to serial No. 15644, excluding No. 14951
 ** Tractors serial No. 15644 and up, including No. 14951

ITEM	PART NO.	QTY.		DESCRIPTION
		*	**	
1	624201	1	-	RING, clutch driving (Used prior to tractor #15338)
	920979	3	-	CAPSCREW, hex-socket-hd., 5/16"NC x 2-3/4"
2	097088	1	1	BEARING, ball, clutch shaft, front
3	644218	1	1	CLUTCH ASSEMBLY (See page 143 for parts)
4	041915	12	-	CAPSCREW, 3/8"NC x 3-1/2" (Used prior to tractor #15338)
	919224	12	12	CAPSCREW, 3/8"NC x 1-1/8" (Effective with tractor #15338)
	904206	12	12	LOCKWASHER, 3/8"
5	083149	1	1	SCREW, adjusting, clutch brake plate
	913830	1	1	NUT, jam, 1/2"NF
6	623460	1	-	PLATE ASSEMBLY, clutch brake (Includes item 7)
	632107	-	1	PLATE ASSEMBLY, clutch brake (Includes item 7)
7	623461	1	-	FACING KIT, brake plate (Includes item 8)
	633001	-	1	FACING KIT, brake plate (Includes item 8)
8	083136	8	-	RIVET, tubular, brass, fl-hd., 1/4" x 1/2"
	634627	-	8	RIVET, tubular, brass, fl-hd., 1/4" x 5/8"
9	644226	1	1	SHAFT, clutch (Used prior to tractor #17405)
	644242	-	1	SHAFT, clutch (Effective with tractor #17405)
	907070	1	1	PLUG, pipe, ctsk-hd., 1/4"NPT
10	050579	1	-	DISC, clutch brake
	634108	-	1	DISC, clutch brake (Used prior to tractor #17405)
	644243	-	1	DISC, clutch brake (Effective with tractor #17405)
11	083270	6	-	CAPSCREW, brake disc attaching (5/16"NF x 5/8")
	904205	6	-	LOCKWASHER, 5/16"
	634111	-	6	CAPSCREW, brake disc supporting (Used prior to tractor #17405)
11A	623969	-	1	RING, snap, brake disc retaining (Effective with tractor #17405)
12	634282	-	1	DISC ASSEMBLY, clutch brake (Consists of 1 disc, 2 spacers and item 13)
	900191	-	4	CAPSCREW, flat-hd., 1/2"NC x 1-1/4"
13	633001	-	1	FACING KIT, brake disc (Includes item 14)
14	634627	-	8	RIVET, tubular, brass, fl-hd., 1/4" x 5/8"
15	926059	1	1	O-RING, clutch housing
16	620279	2	2	SEAL, oil, clutch shaft

(Continued)

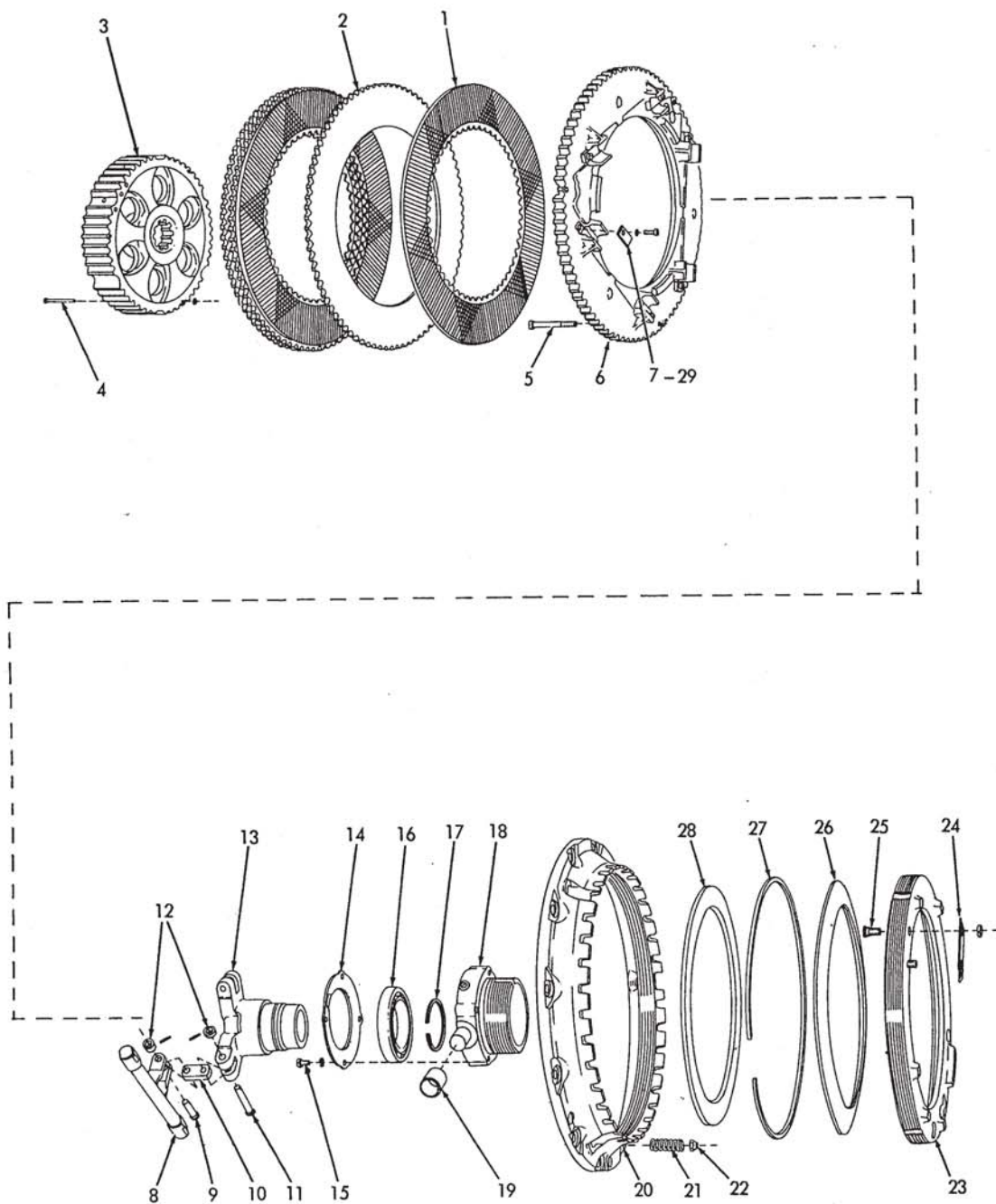
ENGINE CLUTCH AND HOUSING (Continued)

ITEM	PART NO.	QTY.		DESCRIPTION
		*	**	
17	622924	1	1	HOUSING, engine clutch
	916272	9	9	CAPSCREW, 3/8"NC x 1-1/4" (7 less used on Model HD6E tractors #14484 and up)
18	919224	7	7	CAPSCREW, 3/8"NC x 1-1/8" (Model HD6E tractors #14484 and up only)
	904206	9	9	LOCKWASHER, 3/8"
19	622921	1	1	GASKET, access cover
20	622585	1	1	COVER, clutch access
21	916271	6	6	CAPSCREW, 3/8"NC x 1"
	904206	6	6	LOCKWASHER, 3/8"
22	050748	1	1	BREATHER, clutch housing
23	078814	1	1	GASKET, rear bearing retainer
24	634156	1	1	RETAINER, clutch shaft rear bearing
	907070	1	-	PLUG, pipe, ctsk-hd., 1/4"NPT (Used prior to tractor #14906)
	915739	1	1	PLUG, pipe, ctsk-hd., 3/8"NPT (Effective with tractor #14906)
25	916272	6	6	CAPSCREW, 3/8"NC x 1-1/4"
	904206	6	6	LOCKWASHER, 3/8"
26	042847	1	1	BEARING, ball, clutch shaft, rear
27	050293	1	1	RING, snap, clutch shaft
28	050647	1	1	GASKET, oil seal retainer
29	620195	1	1	RETAINER, rear, oil seal
30	919230	4	4	CAPSCREW, 1/2"NC x 1-3/8"
	904208	4	4	LOCKWASHER, 1/2"
31	096761	1	1	SEAL, oil, clutch shaft, rear
32	642216	-	1	RING, snap, clutch thrust (Effective with tractor #17090)



USAGE: Tractors with oil clutch. Standard on Model HD6AG; also on Model HD6E tractors serial No. 14484 and up; optional on prior units as well as on all Models HD6A, B.

ITEM	PART NO.	QTY.	DESCRIPTION
1	620329	1	JOINT ASSY., universal (Consists of items 2 thru 9 and FITTING indented below)
	914687	1	FITTING, lubricating, straight, 1/4"NF
2	620196	1	YOKE, connecting
3	073932	8	CAPSCREW, 5/16"NF x 7/8"
4	073935	4	LOCK, capscREW
5	086284	2	SPIDER ASSY. (Includes bearing, item 6 and FITTING indented below. Serviced only as a unit)
	914687	2	FITTING, lubricating, straight, 1/4"NF
6	625543	8	SEAL, spider bearing
7	622935	1	YOKE, front
8	073932	4	CAPSCREW, 5/16"NF x 7/8"
9	073935	2	LOCK, capscREW
10	085879	1	YOKE ASSY., rear (Includes item 13) (Tractors prior to #19771 on HD6B and #19867 on HD6E)
	651396	1	YOKE, rear (Effective with tractor #19771 on HD6B, #19867 on HD6E and on all Model HD6AG tractors)
11	073932	4	CAPSCREW, 5/16"NF x 7/8"
12	073935	2	LOCK, capscREW
13	050569	3	PIN, driving, transmission seal ring (Tractors prior to #19771 on HD6B and #19867 on HD6E)
14	050548	1	SEAL, yoke
15	050547	1	WASHER, yoke retaining
16	070162	1	CAPSCREW, yoke retaining
17	023633	1	WIRE, locking, 1/16" x 12"



CLUTCH ASSEMBLY 644218

T-38176

CLUTCH ASSEMBLY 644218

USAGE: See page 139

ITEM	PART NO.	QTY.	DESCRIPTION
1	645451	4	DISC, friction, inner
2	642453	3	DISC, friction, outer
3	{ 623308	1	CENTER, splined (Used prior to tractor #17090)
	{ 642256	1	CENTER, splined (Effective with tractor #17090)
4	{ 623621	3	SCREW, disc retaining (Used prior to tractor #17090)
	{ 910243	6	WASHER, plain, SAE std., 3/16"
	{ 922714	3	NUT, elastic stop, #10-NF
	{ 642258	3	RIVET, disc retaining (Effective with tractor #17090)
	{ 645706	3	WASHER, plain
5	623456	3	CAPSCREW, retracting spring
6	638621	1	PLATE ASSEMBLY, pressure (Includes item 7)
7	223585	6	<input type="checkbox"/> BLOCK, cam (Recommend replacement in sets)
	901226	6	<input type="checkbox"/> SCREW, machine, fil-hd., 1/4"NC x 1/2"
	914593	6	<input type="checkbox"/> LOCKWASHER, external teeth, 1/4"
8	638652	3	CAMSHAFT ASSEMBLY (Recommend replacement in sets Includes 6 rollers which are not serviced separately)
9	{ 040221	3	PIN, connecting link, short (Used prior to November 1962)
	{ 901165	3	WASHER, plain, U.S. std., 5/16"
	{ 913984	3	PIN, spring, 1/8" x 5/8"
	{ 638649	3	PIN, connecting link, short (Effective November 1962)
	{ 919180	3	PIN, spring, 1/8" x 5/8"
10	073626	3	LINK, connecting
11	{ 040220	3	PIN, connecting link, long (Used prior to November 1962)
	{ 901165	3	WASHER, plain, U.S. std., 5/16"
	{ 913984	3	PIN, cotter, 1/8" x 5/8"
	{ 638648	3	PIN, connecting link, long (Effective November 1962)
	{ 919180	3	PIN, spring, 1/8" x 5/8"
12	638650	6	COLLAR, connecting link pin (Effective November 1962)
13	623457	1	SLEEVE ASSEMBLY, shifting (Includes 2 bushings which are not serviced separately)
14	630806	1	PLATE, bearing carrier
15	045312	4	CAPSCREW, 5/16"NC x 5/8"
	904205	4	LOCKWASHER, 5/16"
16	057773	1	BEARING, ball, shifting sleeve
17	073908	1	RING, retaining, shifting sleeve bearing
18	623459	1	CARRIER ASSEMBLY, bearing (Includes item 19)
19	056864	2	RACE, inner, shifting yoke needle bearing
20	623449	1	PLATE, back

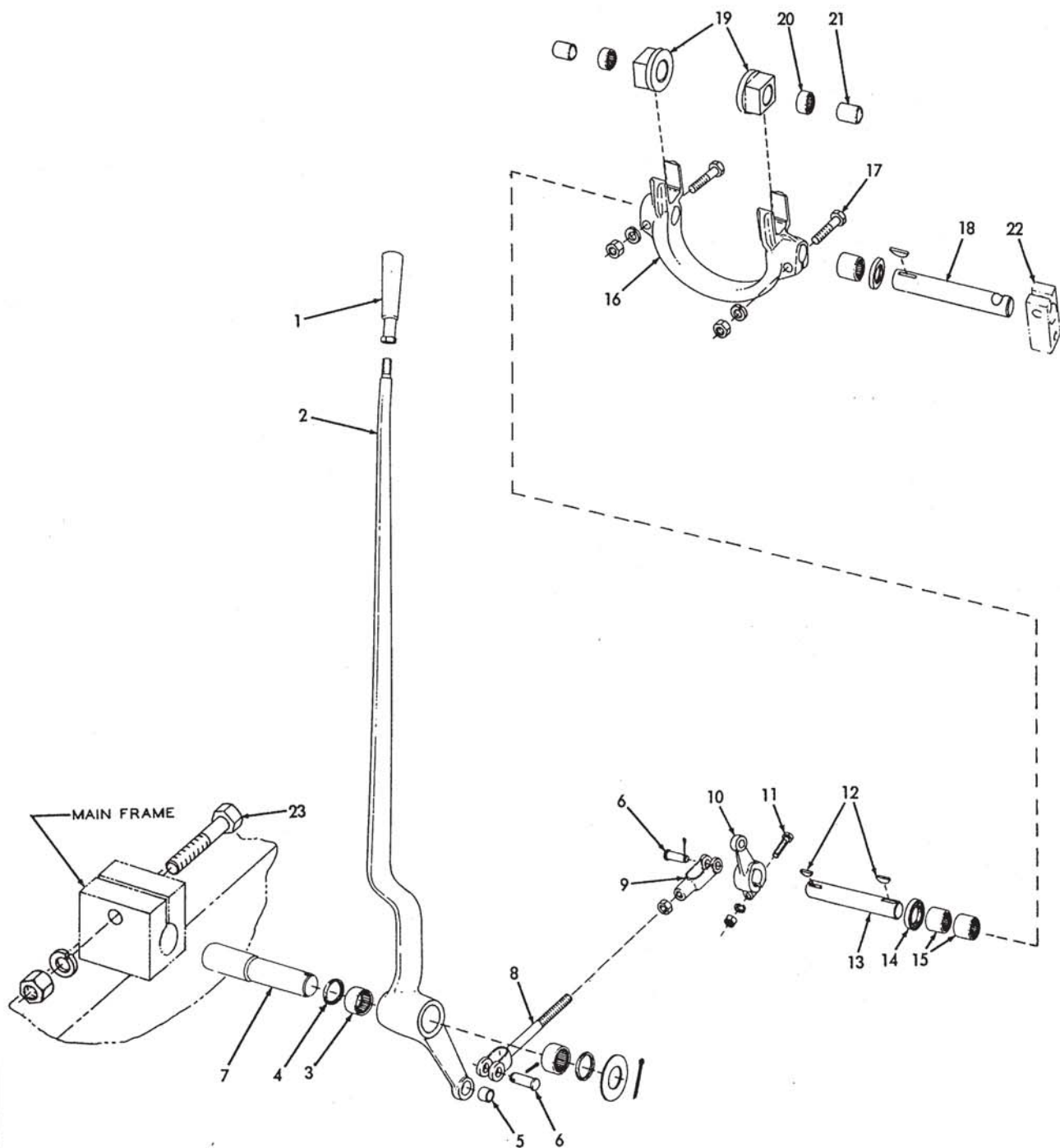
(Continued)

CLUTCH ASSEMBLY 644218 (Continued)

ITEM	PART NO.	QTY.	DESCRIPTION
21	078667	3	SPRING, pressure plate retracting (light type)(Used prior to December 1962)
	639751	3	SPRING, pressure plate retracting (heavy type)(Effective December 1962)
22	073927	3	NUT, retracting spring screw (self-locking)
23	-----	1	RING, adjusting (Used prior to tractor #14187. Order RING 624669 and WASHER 624670)
	624669	1	RING, adjusting (Effective with tractor #14187)
24	646825	1	LOCK, adjustment
25	042767	2	SCREW (fl-hd., 3/8"NF x 1/2")
	911048	2	NUT, jam, 3/8"NF
	639752	2	SCREW (fl-hd., 3/8"NF x 7/8")
	639750	2	NUT, flanged (3/8"NF)
26	-----	1	WASHER, pressure (Used prior to tractor #14187. Order WASHER 624670 and RING 624669)
	624670	1	WASHER, pressure (Effective with tractor #14187)
27	623452	1	RING, washer retaining
28	623453	1	PLATE, adjusting ring
29	043397	1	BLOCK KIT, clutch camshaft (Full set of blocks and attaching parts listed under item 7 above)

☐ Components of item 29

MEMO



ENGINE CLUTCH CONTROL (Oil Clutch)

T-30862

ENGINE CLUTCH CONTROL (Oil Clutch)

USAGE: Tractors with oil clutch. Standard on Model HD6AG; also on Model HD6E tractors serial No. 14484 and up; optional on prior units as well as on Models HD6A, B

* Models HD6A, B, AG also Model HD6E tractors prior to serial No. 14484.
** Model HD6E tractors serial No. 14484 and up

ITEM	PART NO.	QTY.		DESCRIPTION
		*	**	
1	078620	1	1	GRIP, operating lever
2	{ 088626	1	-	LEVER ASSEMBLY, clutch operating (Includes item 5)
	{ 631150	-	1	LEVER ASSEMBLY, clutch operating (Includes item 5)
3	051513	2	2	BEARING, needle, operating lever
4	053926	2	2	SEAL, dust, operating lever
5	049988	1	1	BUSHING, operating lever (steel)
6	049993	2	2	PIN, operating rod yoke
	900805	2	2	PIN, cotter, 1/8" x 3/4"
7	085768	1	1	SHAFT, operating lever
	911159	1	1	WASHER, plain, SAE std., 1"
	910302	1	1	PIN, cotter, 5/32" x 1-1/4"
8	{ 088624	1	-	ROD, clutch operating
	{ 628975	-	1	ROD, clutch operating
	911043	1	1	NUT, 1/2"NF
9	068389	1	1	YOKE, operating rod
10	{ 089801	1	-	LEVER, clutch control
	{ 097784	-	1	LEVER, clutch control
11	910948	1	1	CAPSCREW, 3/8"NC x 2"
	904206	1	1	LOCKWASHER, 3/8"
	911026	1	1	NUT, 3/8"NC
12	036997	3	3	KEY, #13 woodruff, 3/16" x 1" (hardened)
13	622912	1	1	SHAFT, clutch shifting yoke, left side
14	603010	2	2	SEAL, oil, shifting yoke shaft
15	604925	3	3	BEARING, needle, shifting yoke shaft
16	056873	1	1	YOKE, clutch shifting
17	645295	2	2	CAPSCREW, thin-hd., 1/2"NF x 2-1/4"
	904208	2	2	LOCKWASHER, 1/2"
	911043	2	2	NUT, 1/2"NF
18	622913	1	1	SHAFT, clutch shifting yoke, right side
19	056865	2	2	BLOCK, sliding, shifting yoke
20	050442	2	2	BEARING, needle, shifting yoke
21	-----	2	2	RACE, shifting yoke needle bearing (See CLUTCH ASSEMBLY)
22	-----	1	1	LEVER, gear shift lock (See GEAR SHIFT)
23	914876	-	1	CAPSCREW, retaining, operating lever shaft (5/8"NC x 2-1/2")
	904209	-	1	LOCKWASHER, 5/8"
	911029	-	1	NUT, 5/8"NC