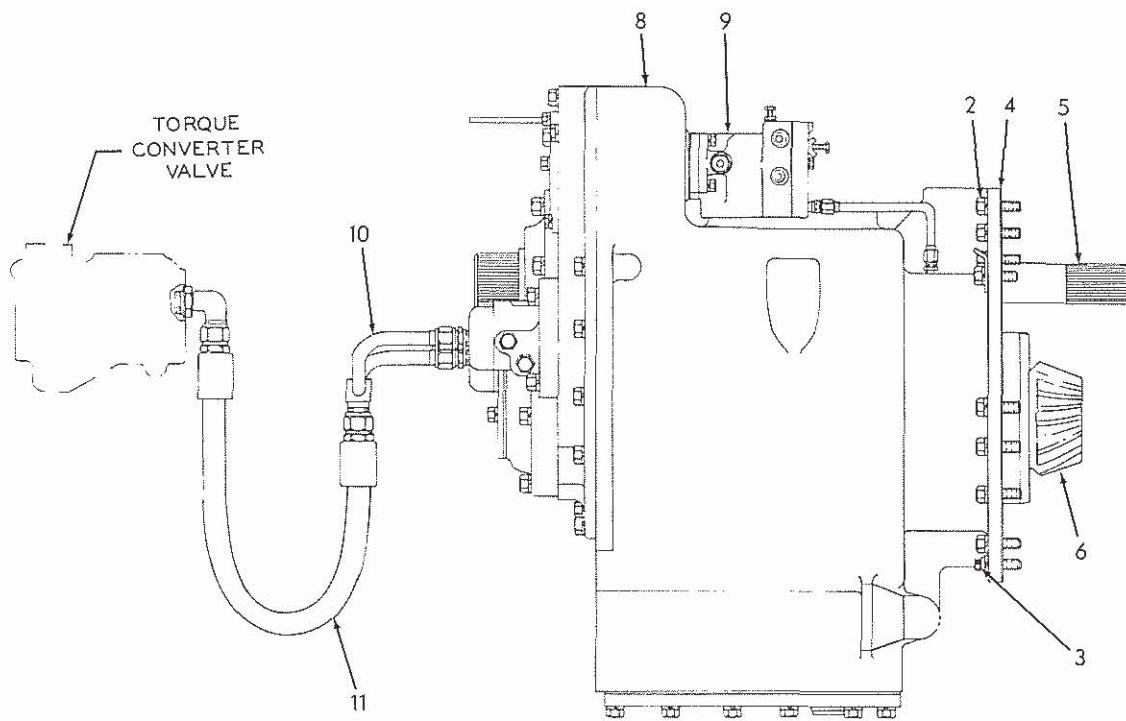


FRONT VIEW



SIDE VIEW

TRANSMISSION (Second type)

T-73829

TRANSMISSION

USAGE: Tractors serial No. 8399 and up

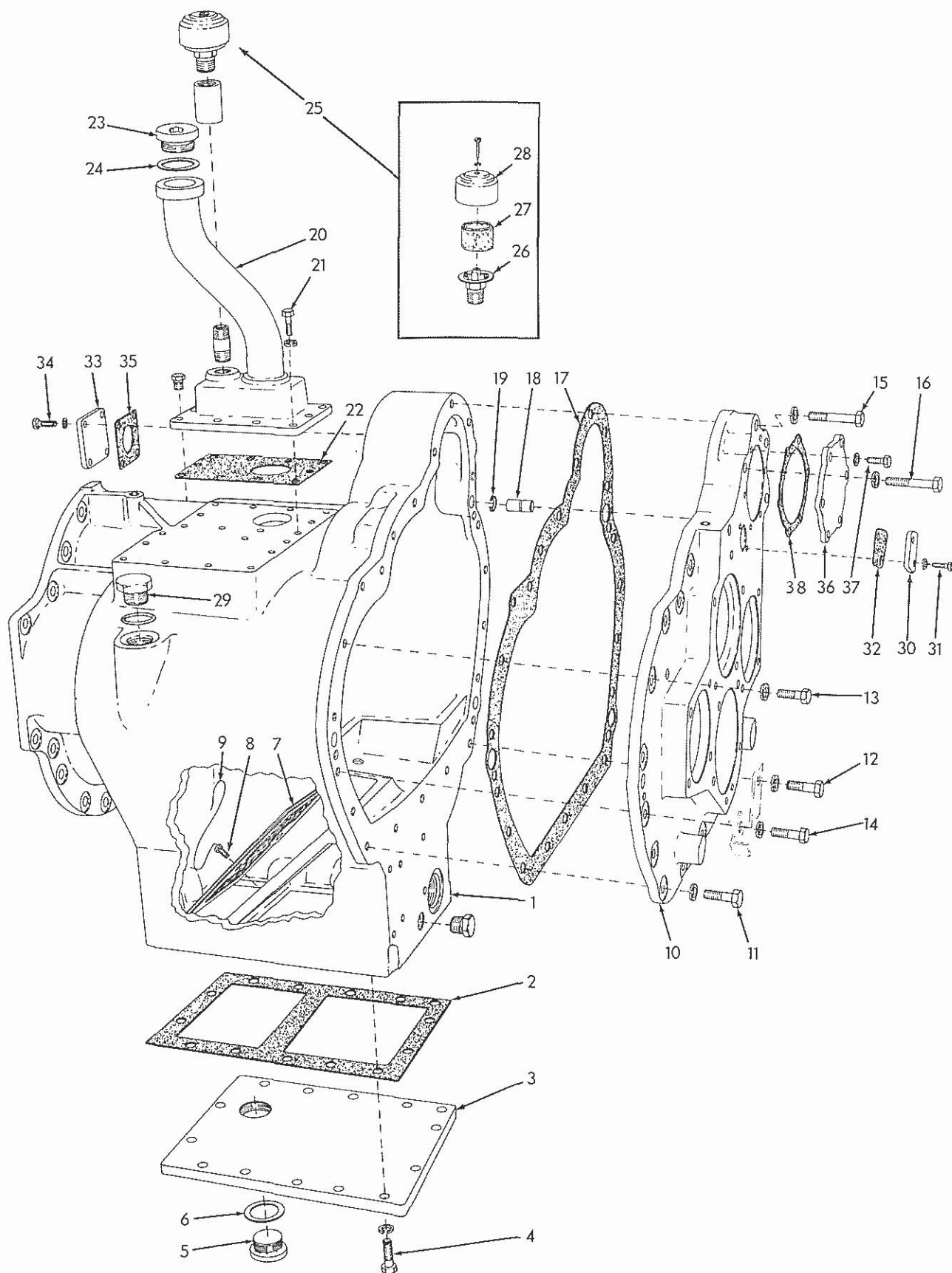
ITEM	PART NO.	QTY.	DESCRIPTION
	70648333	1	TRANSMISSION ASSEMBLY (Includes items 5 thru 8)(Standard)
1	70644800	1	TRANSMISSION ASSEMBLY (Includes items 5 thru 9)(Special)
2	70035018	16	CAPSCREW, 1/2"NF x 1-1/2"
3	70647563	2	CAPSCREW, 12-point, 1/2"NF x 1-1/2"
	70904208	18	LOCKWASHER, 1/2"
4	70654294	1	GASKET, case to steering clutch housing
5	-----	-	See TRANSMISSION INPUT SHAFT
6	-----	-	See TRANSMISSION BEVEL PINION SHAFT
7	-----	-	See TRANSMISSION CLUTCH SHAFTS
8	-----	-	See TRANSMISSION CASE AND COVERS
9	-----	-	See GROUND SPEED GOVERNOR
10	70659440	1	TUBE ASSEMBLY, oil jumper (Includes nuts)
	70919472	2	CONNECTOR, flare type, 5/8" tube, 1/2" NPT male
11	70659441	1	HOSE, oil supply (See HOSE PARTS)
	70921203	1	ELBOW, adjustable, 90°, flare type, 3/4" tube, 1-1/16" NF (Includes washer, nut and O-RING 70921206)

TRANSMISSION CASE AND COVERS

* Tractors prior to serial No. 6151
 ** Tractors serial No. 6151 and up

ITEM	PART NO.	QTY. * **		DESCRIPTION
1	70654310	1	1	CASE, transmission (If for tractors prior to #6500 also order RING 70638335 and PLUG 70921216; if for tractors prior to #6151 also include 1 each TUBE 70641972, ADAPTER 70641963, CLIP 70623235, ANGLE 70620604, CAPSCREW 70070467, O-RING 70921887, NUT 70911043 and LOCKWASHER 70904208)
	70920525	-	1	PLUG, pipe, hex-hd., 3/4"NPT (Not used when PUSH-START PUMP is installed)
	70919840	-	1	PLUG, pipe, hex-hd., 1/4"NPT (Not used when GROUND SPEED GOVERNOR is installed)
2	70627352	1	-	GASKET, bottom cover
	70642788	-	1	GASKET, bottom cover
3	70627354	1	-	COVER, bottom
	70642787	-	1	COVER, bottom
4	70035190	18	14	CAPSCREW, 1/2"NC x 1-1/2"
	70904208	18	14	LOCKWASHER, 1/2"
5	70035250	1	1	PLUG, drain
6	70667252	1	1	GASKET, drain plug
7	70632067	1	1	SCREEN, oil
8	70606858	2	2	CAPSCREW, drilled-hd., 3/8"NC x 3/4"
9	70023633	1	1	WIRE, locking, 1/16" x 12"
10	70627419	1	1	COVER, front
11	70035190	13	13	CAPSCREW, 1/2"NC x 1-1/2"
12	70035190	1	-	CAPSCREW, 1/2"NC x 1-1/2"
	70035236	-	1	CAPSCREW, 1/2"NC x 1-3/4"
13	70035236	1	1	CAPSCREW, 1/2"NC x 1-3/4"
14	70035190	1	-	CAPSCREW, 1/2"NC x 1-1/2"
	70035236	-	1	CAPSCREW, 1/2"NC x 1-3/4"
15	70041877	4	4	CAPSCREW, 1/2"NC x 3"
16	70041917	1	1	CAPSCREW, 1/2"NC x 3-1/4"
	70904208	21	21	LOCKWASHER, 1/2"
	70910244	3	3	WASHER, plain, SAE std., 1/2"
17	70654798	1	1	GASKET, front cover
18	70624695	3	3	PIN, dowel, front cover
19	70623804	3	3	RING, snap, dowel pin
20	70624520	1	1	FILLER, oil
21	70044249	10	10	CAPSCREW, 3/8"NC x 1-1/8"
	70904206	10	10	LOCKWASHER, 3/8"
22	70627346	1	1	GASKET, oil filler
23	70035250	1	1	PLUG, oil filler

(Continued)

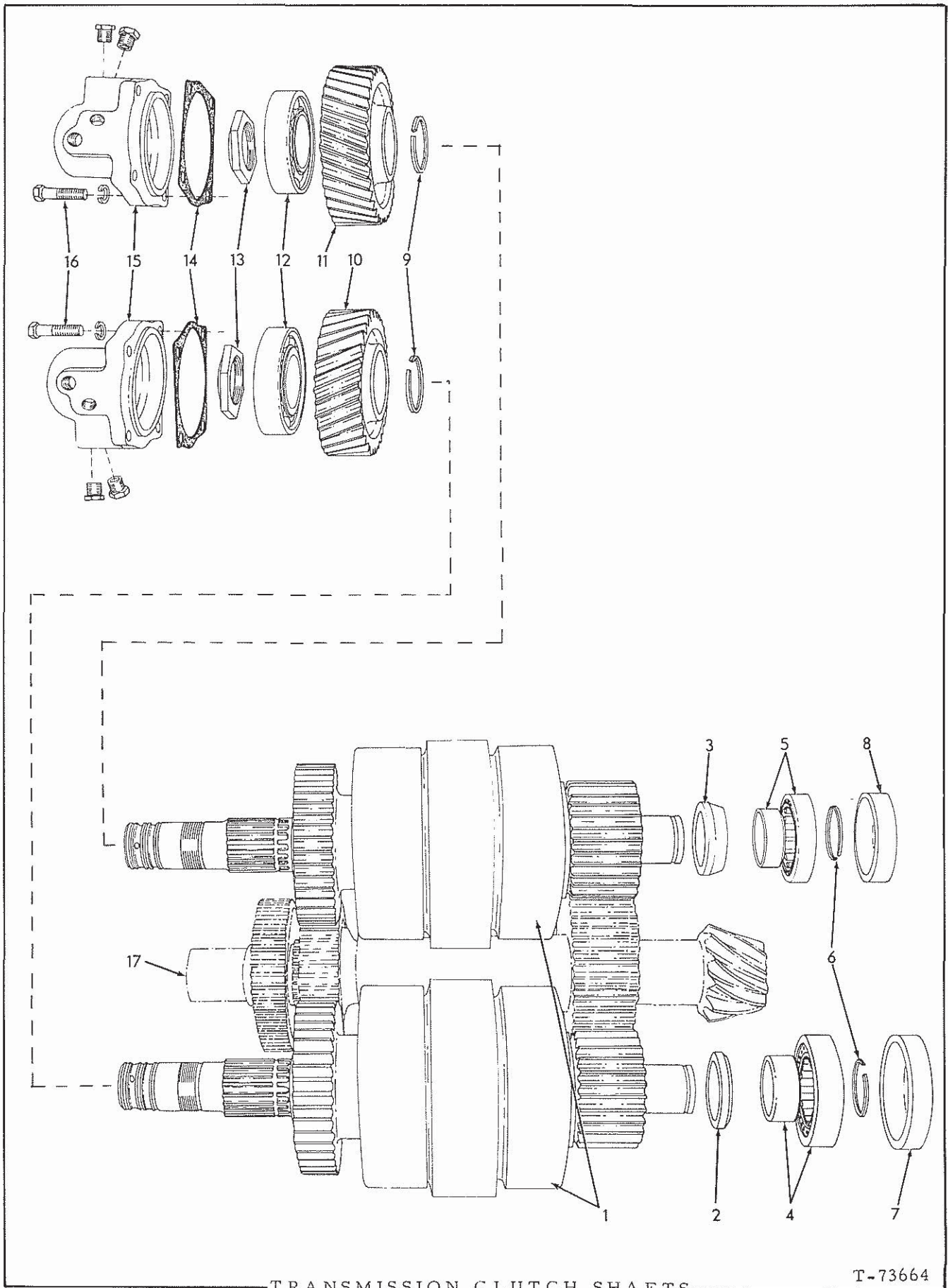


T-73670

TRANSMISSION CASE AND COVERS

TRANSMISSION CASE AND COVERS

ITEM	PART NO.	QTY.		DESCRIPTION	
		*	**		
24	70667252	1	1	GASKET, oil filler plug	
25	73002766	1	1	BREATHER ASSEMBLY (Consists of items 26 thru 28)	
	70901767	1	1	COUPLING, pipe, 3/4"NPT	
	70902170	1	1	NIPPLE, pipe, 3/4"NPT	
26	73002767	1	1	BASE, breather	
27	73002769	1	1	ELEMENT, breather	
28	73002768	1	1	CAP, breather	
	70914172	1	1	SCREW, machine, #10-24NF x 1-1/4"	
	70904203	1	1	LOCKWASHER, #10	
29	70921216	-	1	PLUG, closure (Includes O-RING 70921214)(Effective with tractor #6500)	
30	70631885	1	1	COVER, small hole	
31	70035439	2	2	CAPSCREW, 3/8"NC x 1"	
	70904206	2	2	LOCKWASHER	
32	70643810	1	1	GASKET, small hole cover	} Not used on transmissions equipped with GROUND SPEED GOVERNOR
33	70630584	-	1	COVER, governor mounting hole	
34	70045295	-	4	CAPSCREW, 5/16"NC x 1"	
	70904205	-	4	LOCKWASHER, 5/16"	
35	70624706	-	1	GASKET, governor mounting hole cover	
36	70643081	-	1	COVER, large hole	
37	70035439	-	6	CAPSCREW, 3/8"NC x 1"	
	70904206	-	6	LOCKWASHER, 3/8"	
38	70643080	-	1	GASKET, large hole cover	

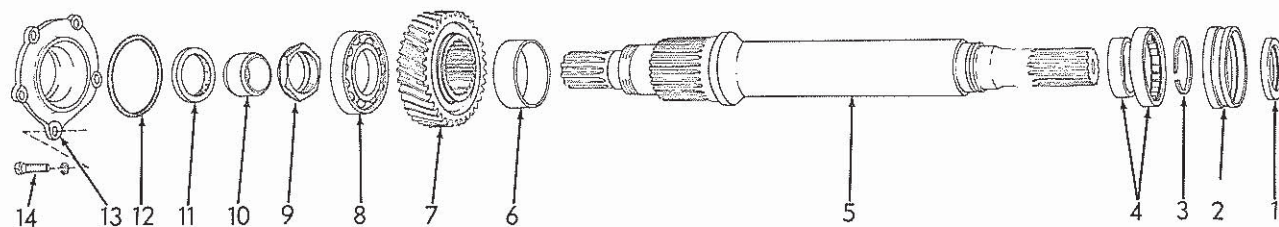


TRANSMISSION CLUTCH SHAFTS

T-73664

TRANSMISSION CLUTCH SHAFTS

ITEM	PART NO.	QTY.	DESCRIPTION
1	70643561	2	CLUTCH AND SHAFT ASSEMBLY (See page 137 for parts)
2	70639508	1	SPACER, rear bearing, left clutch
3	70639507	1	SPACER, rear bearing, right clutch
4	70623963	1	BEARING, roller, left clutch, rear
5	70091375	1	BEARING, roller, right clutch, rear
6	70050292	2	RING, snap, clutch bearings, rear
7	70632794	1	PLUG, cup, left clutch rear bearing (4-3/4" diam.)
8	70632793	1	PLUG, cup, right clutch rear bearing (4" diam.)
9	70623969	2	RING, snap, clutch shaft
10	70639505	1	GEAR, driving, left clutch (33 teeth)
11	70639504	1	GEAR, driving, right clutch (38 teeth)
12	70647972	2	BEARING, ball, front end
13	70639761	2	NUT, clutch shaft
14	70629223	2	GASKET, oil collector
15	70639502	2	COLLECTOR, oil
	70920333	4	PLUG, pipe, hex-hd., 3/8"NPT
16	70035236	8	CAPSCREW, 1/2"NC x 1-3/4"
	70904208	8	LOCKWASHER, 1/2"
17	-----	-	See TRANSMISSION BEVEL PINION SHAFT



TRANSMISSION INPUT SHAFT

T-73663

ITEM	PART NO.	QTY.	DESCRIPTION
1	70638336	1	SEAL, oil, rear end
2	70638334	1	RETAINER, rear oil seal
3	70624783	1	RING, snap, shaft
4	70623974	1	BEARING, roller
5	70676213	1	SHAFT
6	70624174	1	SPACER, drive gear
7	70623999	1	GEAR, drive (36 teeth)
8	70623966	1	BEARING, ball
9	70623985	1	NUT, bearing retaining (Used prior to tractor #6014)
	70639762	1	NUT, bearing retaining (Elastic stop)(Effective with tractor #6014)
10	70624139	1	SLEEVE, wear, oil seal
11	70628940	1	SEAL, oil, front end
12	70629286	1	O-RING, sealing, retainer
13	70624177	1	RETAINER, front oil seal
14	70035236	5	CAPSCREW, 1/2"NC x 1-3/4"
	70904208	5	LOCKWASHER, 1/2"

CLUTCH AND SHAFT ASSEMBLY 643561

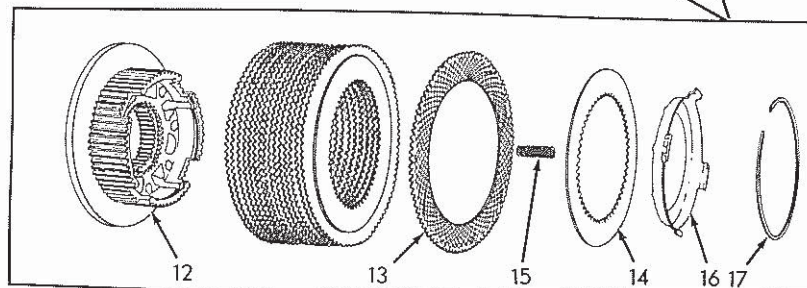
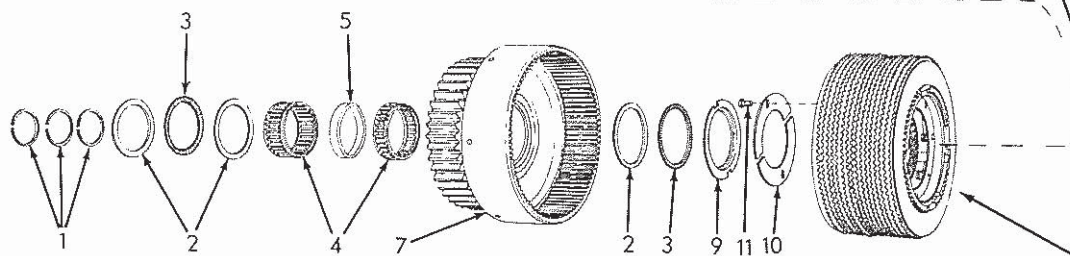
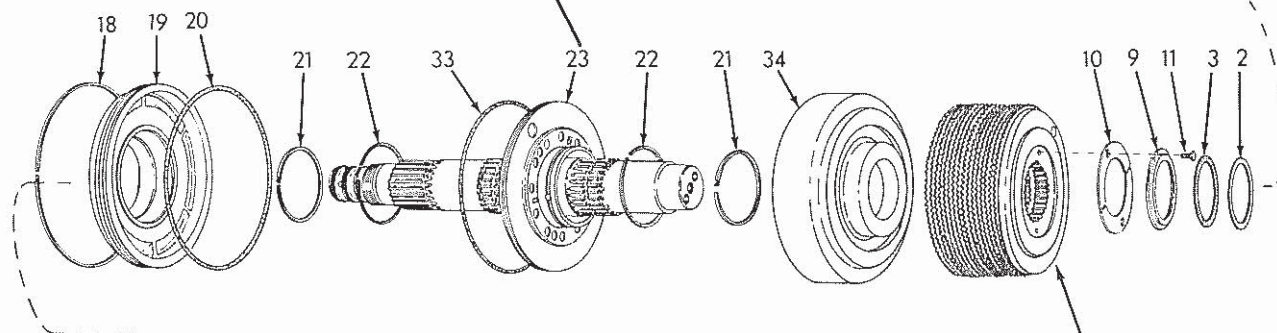
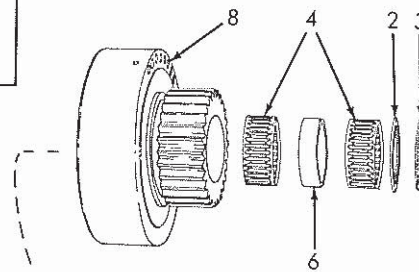
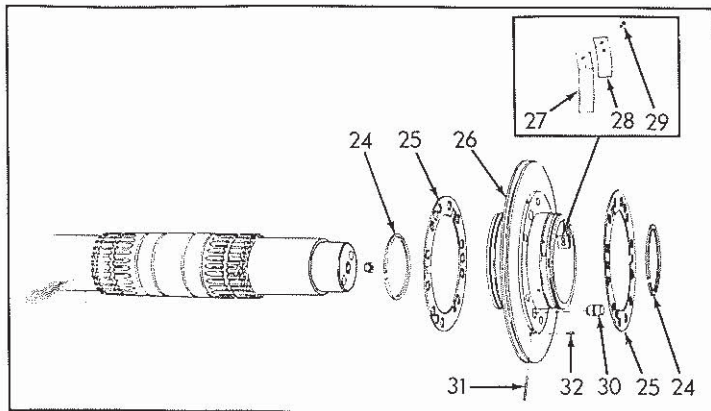
USAGE: See page 135

ITEM PART NO. QTY. DESCRIPTION

NOTE: All quantities indicated are for one (1) assembly only.

1	73037629	3	RING, shaft sealing, end
2	73037646	5	WASHER, thrust
3	73037645	4	BEARING, thrust
4	73037615	4	BEARING, roller, clutch gear
5	70639591	1	SPACER, bearing, high speed gear (7/16" wide)
6	70639594	1	SPACER, bearing, low speed gear (13/16" wide)
7	70639622	1	GEAR AND DRUM, high speed (41 teeth)
8	70639617	1	GEAR AND DRUM, low speed (26 teeth)
9	73037638	2	SPACER, clutch hub
10	70639596	4	RETAINER, clutch hub (half only)
11	73037641	4	CAPSCREW, thin-hd., 5/16"NF x 1/2"
12	70643571	2	HUB, clutch (If for tractors prior to #6163 also order RETAINER 70643572)
13	70642113	16	PLATE, friction, outer
14	70642146	16	PLATE, friction, inner
15	70189267	16	SPRING, clutch hub
16	70643572	2	RETAINER, clutch hub spring (If for tractors prior to #6163 rework HUB (item 12) per sketch S-3979)
17	70639572	2	RING, snap, spring retainer
18	70639584	1	RING, snap, actuating piston housing
19	70639597	1	PISTON, clutch actuating
20	70639567	1	SEAL, actuating piston
21	73037631	2	RING, shaft sealing, center
22	70639585	2	RING, carrier sealing
23	70642968	1	SHAFT ASSEMBLY (Includes items 24 thru 32)
	70907859	1	PLUG, pipe, hex-socket, 1/4"NPT
24	70052175	2	RING, snap, carrier retaining
25	70639609	2	PLATE, valve
26	70642148	1	CARRIER ASSEMBLY (Includes items 27 thru 29)
27	{ -----	2	PLATE, flapper valve (Used prior to tractor #5937. Order GUARD 70642329 and 3 RIVETS 70639578)
	{ 70642329	2	GUARD, flapper valve (Effective with tractor #5937)
28	70639579	2	VALVE, flapper

(Continued)

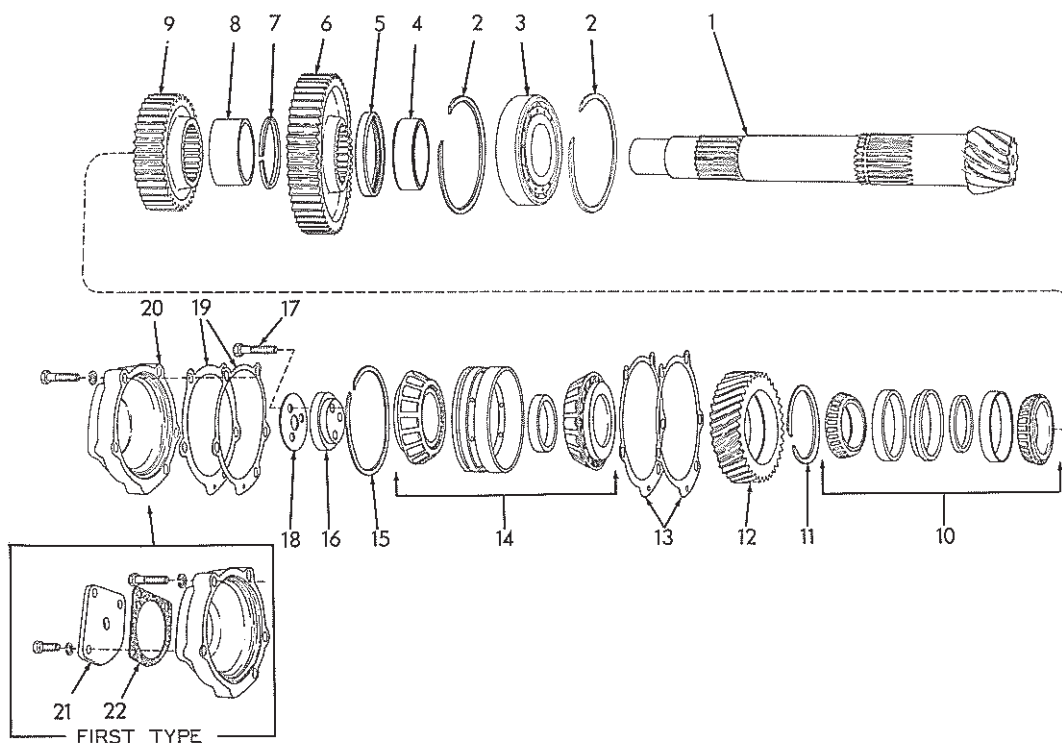


CLUTCH AND SHAFT ASSEMBLY 70643561

T-73665

CLUTCH AND SHAFT ASSEMBLY 70643561 Continued)

ITEM	PART NO.	QTY.	DESCRIPTION
29	70639578	6	RIVET, flapper valve guard (2 less used on tractors prior to #5937)
30	70639598	6	PISTON, valve actuating
31	73037768	6	PIN, piston stop
32	70922745	6	PIN, retaining, piston stop pin
33	70639576	1	O-RING, carrier
34	70639630	1	HOUSING, piston



TRANSMISSION BEVEL PINION SHAFT

T-73666

ITEM	PART NO.	QTY.	DESCRIPTION
1	70624129	1	PINION, bevel (12 teeth)
2	70638335	2	RING, snap, bearing retaining (1 less used on tractors prior to #6500)
3	70639655	1	BEARING, roller, rear end
4	70624137	1	SPACER, low speed gear
5	70623971	1	SEAL, oil
6	70624128	1	GEAR, low speed (54 teeth)
7	70623973	1	RING, snap, gear retaining
8	70624130	1	SPACER, high speed gear
9	70624142	1	GEAR, high speed (39 teeth)
10	70650724	1	BEARING, roller (Consists of 2 roller assemblies, 2 cups and 2 spacers. Serviced only as a unit)
11	70634670	1	RING, snap, idling gear
12	70623968	1	GEAR, idling (36 teeth)
13	70623953	3	SHIM, pinion adjustment (.005" thick)
	70623954	7	SHIM, pinion adjustment (.007" thick)
	70623955	10	SHIM, pinion adjustment (.010" thick)

Use as req'd

(Continued)

(Revised March 1972)

TRANSMISSION BEVEL PINION SHAFT (Continued)

ITEM	PART NO.	QTY.	DESCRIPTION
14	70082343	1	BEARING, roller, front end (Consists of 2 roller assemblies, 1 cup and 1 spacer. Serviced only as a unit)
15	70048705	1	RING, snap, front bearing
16	70632066	1	WASHER, end (For units with PUSH-START PUMP)
	70643028	1	WASHER, end (For units without PUSH-START PUMP)
17	70035073	3	CAPSCREW, 1/2"NF x 1-3/4"
18	70632166	1	PLATE, capscREW locking
19	70623956	4	SHIM, bearing retainer (.005" thick.)
	70623957	3	SHIM, bearing retainer (.007" thick.)
20	70623959	1	RETAINER, front bearing (Tractors prior to unit #9623; also for all units equipped with PUSH-START PUMP)
	70667400	1	RETAINER, front bearing (Tractors unit #9623 and up. Not for for unit equipped with PUSH-START PUMP)
	70035712	5	CAPSCREW, 1/2"NC x 2-1/4"
	70904208	5	LOCKWASHER, 1/2"
21	70643027	1	COVER, front bearing retainer
	70035439	3	CAPSCREW, 3/8"NC x 1"
	70904206	3	LOCKWASHER, 3/8"
22	70632065	1	GASKET, cover

Use as req'd

For units without PUSH-START PUMP prior to unit # 9623

(Revised March 1972)