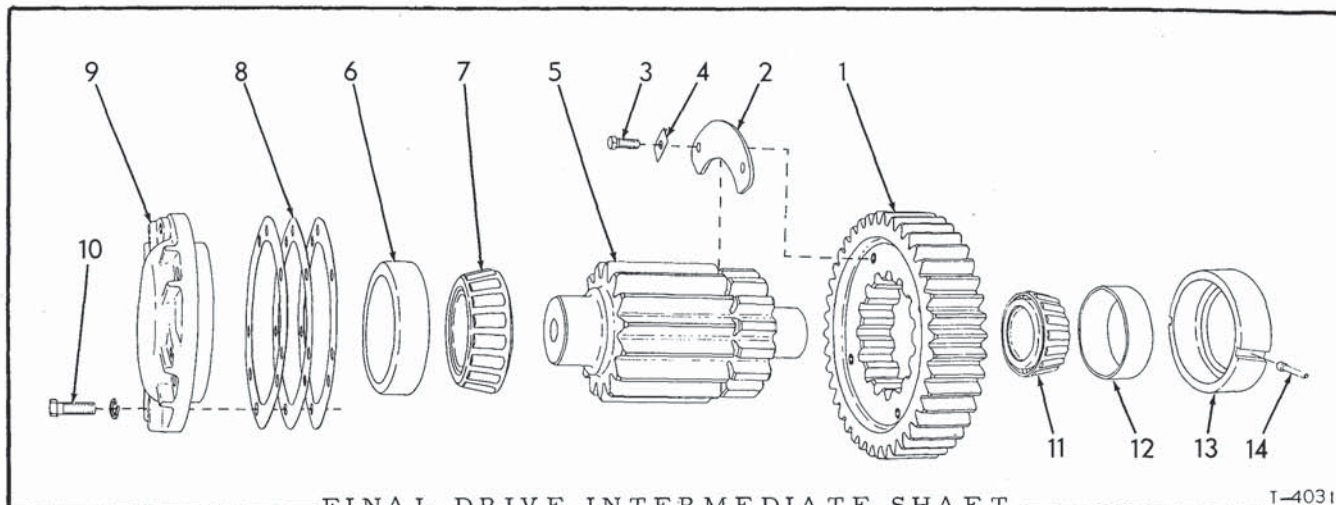


BEVEL GEAR AND SHAFT

T-72374

ITEM	PART NO.	QTY.	DESCRIPTION
1	056780	1	GEAR, bevel
2	052270	10	BOLT, 5/8"NF x 2-1/2"
3	645320	10	NUT, elastic stop, 5/8"NF
4	{ 631329	1	SHAFT, bevel gear (Tractors prior to #12739)
	{ 659446	1	SHAFT, bevel gear (Tractors #12739 and up)
5	627279	1	RING, bolt locking
6	631588	2	CONE ASSY., shaft bearing
7	631587	2	CUP, shaft bearing
8	{ 634134	12	SHIM, bearing adjustment (.005" thick)
	{ 634135	12	SHIM, bearing adjustment (.007" thick)
	{ 634136	12	SHIM, bearing adjustment (.010" thick)
			} Use as required
9	{ 631576	2	CAGE, bearing (Tractors prior to #12739)
	{ 659493	2	CAGE, bearing (Tractors #12739 and up)
10	035073	10	CAPSCREW, 1/2"NC x 1-3/4"
	910210	10	LOCKWASHER, external teeth, 1/2"



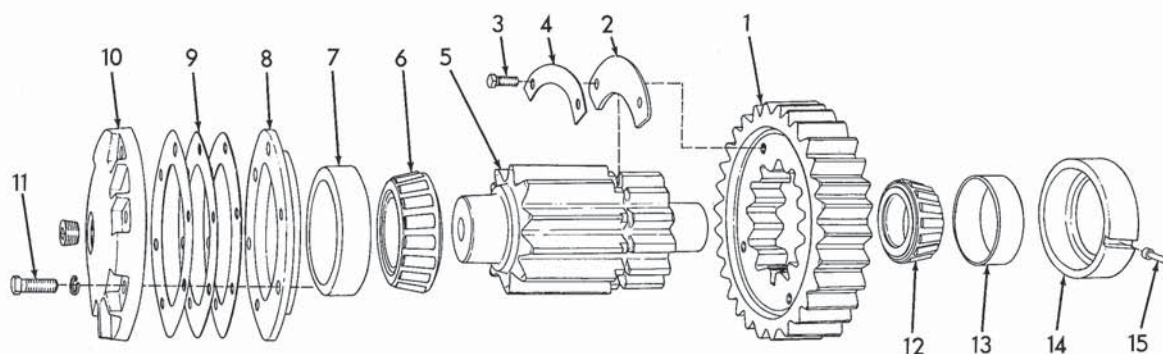
FINAL DRIVE INTERMEDIATE SHAFT

T-4031

USAGE: Tractors prior to serial No. 12525

ITEM PART NO. QTY. DESCRIPTION

1	642642	2	GEAR (40 teeth)	
2	056508	4	LOCK, gear retaining	
3	035439	8	CAPSCREW, 3/8"NC x 1"	
4	052444	8	LOCK, capscrew	
5	642640	2	PINION (15 teeth)	
6	069328	2	CUP, outer bearing	
7	069441	2	CONE ASSEMBLY, outer bearing	
8	093250	4	SHIM, bearing adjustment (.005" thick)	Use as req'd.
	093249	4	SHIM, bearing adjustment (.007" thick)	
	093248	14	SHIM, bearing adjustment (.010" thick)	
9	093256	2	CAGE, outer bearing	
10	023465	10	CAPSCREW, 5/8"NF x 1-3/4"	
	904209	10	LOCKWASHER, 5/8"	
11	211582	2	CONE ASSEMBLY, inner bearing	
12	211581	2	CUP, inner bearing	
13	084297	2	CAGE, inner bearing	
14	089320	2	PIN, locking, inner bearing cage	



# FINAL DRIVE INTERMEDIATE SHAFT

T-72894

USAGE: Tractors serial No. 12525 and up

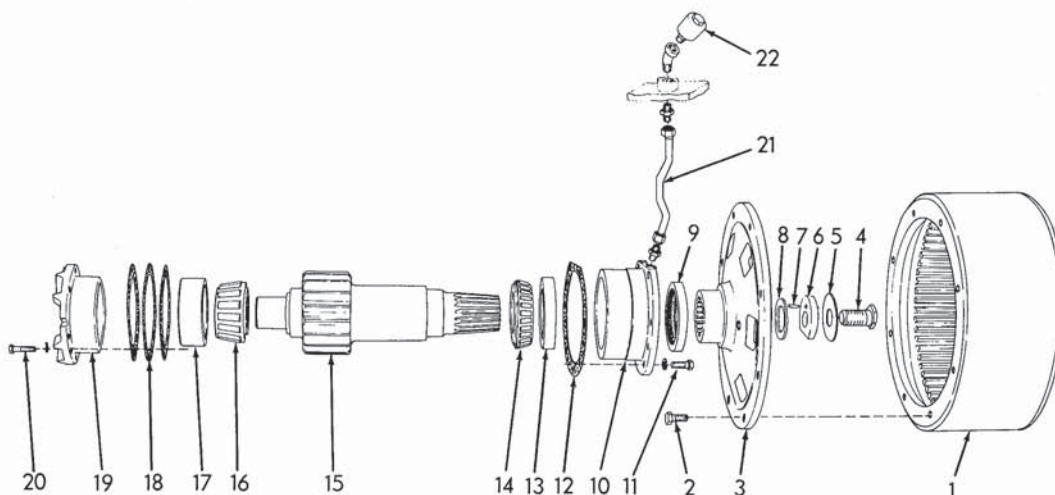
\* Tractors prior to serial No. 12827

\*\* Tractors serial No. 12827 and up

ITEM	PART NO.	QTY.		DESCRIPTION
		*	**	
1	655629	2	2	GEAR (30 teeth)(Not used on tractors #12955 thru #12962)
	642642	-	2	GEAR (40 teeth)(Effective with tractors #12955 thru #12962)
2	655631	4	4	LOCK, gear retaining (Not used on tractors #12955 thru #12962)
	056508	-	4	LOCK, gear retaining (Effective with tractors #12955 thru #12962)
3	035439	8	8	CAPSCREW, 3/8"NC x 1"
4	655632	4	4	LOCK, cap screw (Not used on tractors #12955 thru #12962)
	052444	-	8	LOCK, cap screw (Effective with tractors #12955 thru #12962)
5	655630	2	2	PINION (12 teeth)(Not used on tractors #12955 thru #12962)
	642640	-	2	PINION (15 teeth)(Effective with tractors #12955 thru 12962)
6	069441	2	2	CONE ASSY., outer bearing
7	069328	2	2	CUP, outer bearing
8	655626	2	-	CAGE, outer bearing
	658834	-	2	CAGE, outer bearing
9	655625	4	-	SHIM, bearing adjustment (.005" thick)
	658838	-	4	SHIM, bearing adjustment (.005" thick)
	655624	4	-	SHIM, bearing adjustment (.007" thick)
	658839	-	4	SHIM, bearing adjustment (.007" thick)
	655623	14	-	SHIM, bearing adjustment (.010" thick)
10	658840	-	14	SHIM, bearing adjustment (.010" thick)
	655622	2	-	RETAINER, outer bearing
11	658837	-	2	RETAINER, outer bearing
	901666	2	2	PLUG, pipe, ctsk-hd., 1"NPT
12	023465	10	12	CAPSCREW, 5/8"NF x 1-3/4"
	904209	10	12	LOCKWASHER, 5/8"
13	211582	2	2	CONE ASSY., inner bearing
14	211581	2	2	CUP, inner bearing
15	084297	2	2	CAGE, inner bearing
	089320	2	2	PIN, locking, inner bearing cage

Use as required





FINAL DRIVE PINION SHAFT

T-72326

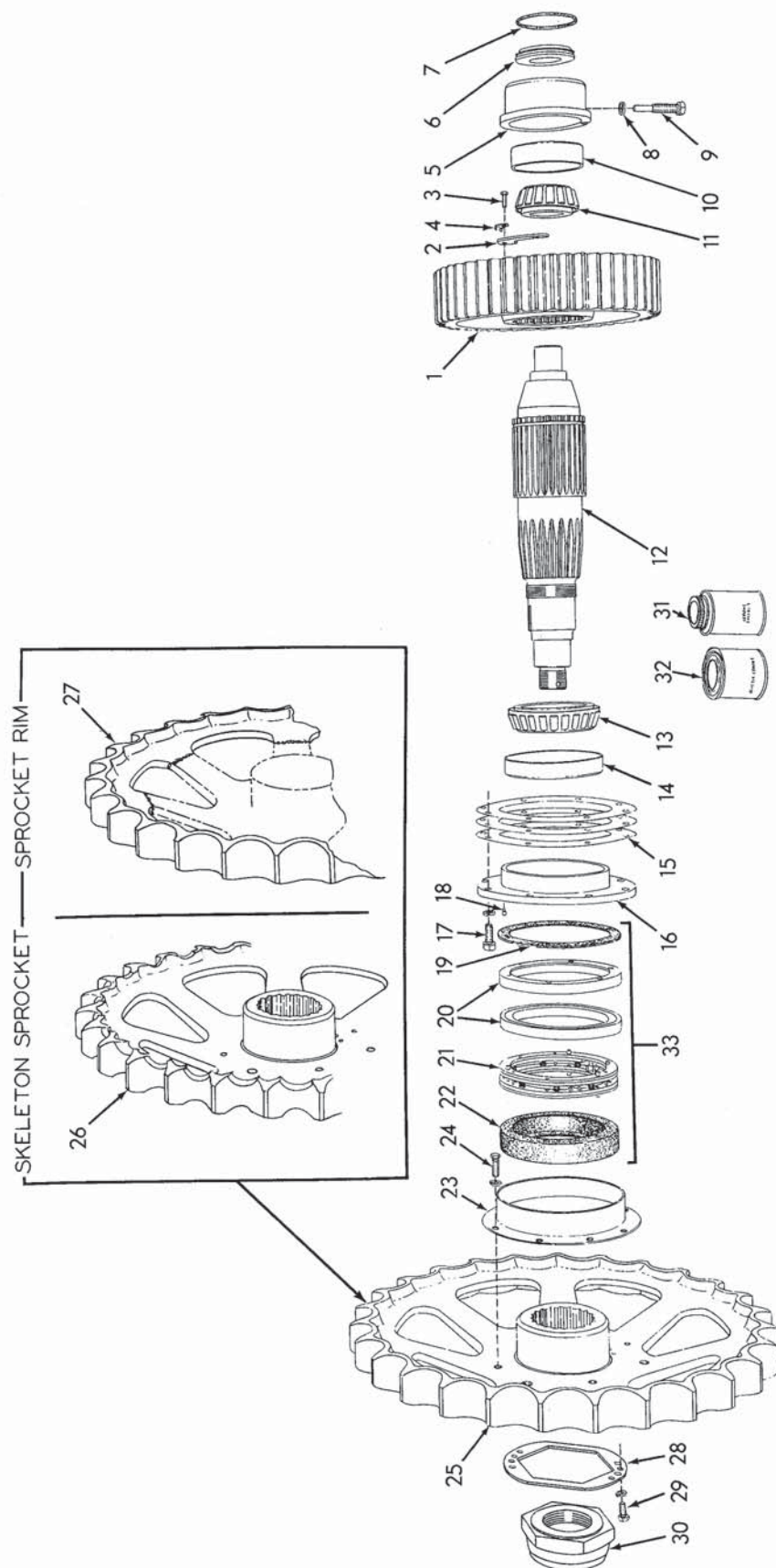
ITEM	PART NO.	QTY.	DESCRIPTION
1	631316	2	DRUM, brake
2	650835	16	BOLT, self-locking, 1/2"NC x 1"
3	624559	2	HUB, brake drum
4	630045	2	CAPSCREW, hub retaining (1"NF x 1-3/4")(Tractors prior to #13380)
	663117	2	CAPSCREW, hub retaining (self-locking)(Tractors #13380 and up)
5	630052	2	LOCK, hub retaining capscREW (Tractors prior to #13380)
6	631584	2	WASHER ASSY., hub retaining (Includes item 7)(Tractors prior to #13380)
	664330	2	WASHER ASSY., hub retaining (Includes item 7)(Tractors #13380 thru 14027)
	666324	2	WASHER ASSY., hub retaining (Tractors #14028 and up)
7	035793	2	PIN, hub retaining washer (Tractors prior to #14028)
8	056513	2	WASHER, sealing, brake drum hub
9	628320	2	SEAL, oil
10	631577	2	CAGE, inner bearing
11	070469	12	CAPSCREW, 1/2"NF x 1-1/4"
	904208	12	LOCKWASHER, 1/2"
12	633904	2	GASKET, inner bearing cage
13	057005	2	CUP, inner bearing
14	057006	2	CONE ASSY., inner bearing
15	642641	2	PINION (16 teeth)(Tractors prior to #12525 including #12955 thru #12962)
	655628	2	PINION (12 teeth)(Tractors #12525 and up excluding #12955 thru 12962)
16	057004	2	CONE ASSY., outer bearing
17	057003	2	CUP, outer bearing
18	084905	4	SHIM, bearing adjustment (.005" thick)
	084904	4	SHIM, bearing adjustment (.007" thick)
	084903	14	SHIM, bearing adjustment (.010" thick)

Use as required

(Continued)

FINAL DRIVE PINION SHAFT (Continued)

ITEM	PART NO.	QTY.	DESCRIPTION
19	084319	2	CAGE, outer bearing
20	012992	8	CAPSCREW, 3/8"NF x 1-1/4"
	904206	8	LOCKWASHER, 3/8"
21	650128	2	TUBE ASSEMBLY, vent (Includes nuts)
	919171	4	CONNECTOR, flare type, 1/4" tube, 1/8"NPT male
22	050748	2	BREATHER
	910149	2	ELBOW, street, 45°, 3/8"NPT



# FINAL DRIVE SPROCKET, SHAFT AND GEAR

\* Tractors prior to serial No. 13051

\*\* Tractors serial No. 13051 and up

ITEM	PART NO.	QTY.		DESCRIPTION
		*	**	
1	642643	2	-	GEAR, driving (46 teeth)(Tractors prior to #12525, including #12955 thru #12962)
	655633	2	2	GEAR, driving (37 teeth)(Tractors #12525 and up, excluding #12955 thru #12962)
2	058826	4	4	LOCK, gear retaining
3	035439	8	8	CAPSCREW, 3/8"NC x 1"
4	052444	8	8	LOCK, capscrew
5	084289	2	2	CAGE, inner bearing cup
6	091571	2	2	COVER, inner bearing
7	923817	2	2	O-RING, inner bearing cover
8	049918	2	2	WASHER, bearing cage setscrew (copper)
9	084278	2	2	SETSCREW, bearing cage (hex-hd., dog-pt., 5/8"NF x 3-3/8")
10	052070	2	2	CUP, inner bearing
11	084277	2	2	CONE ASSEMBLY, inner bearing
12	622135	2	2	SHAFT, sprocket
13	069615	2	2	CONE ASSEMBLY, intermediate bearing
14	069614	2	2	CUP, intermediate bearing
15	056971	8	8	SHIM, bearing adjustment (.005" thick)
	056970	4	4	SHIM, bearing adjustment (.007" thick)
	056969	24	24	SHIM, bearing adjustment (.010" thick)
16	084349	2	2	CAGE ASSEMBLY, intermediate bearing (Includes item 18)
17	035018	16	16	CAPSCREW, 1/2"NF x 1-1/2"
	904208	16	16	LOCKWASHER, 1/2"
18	084432	6	6	PIN, locating, seal ring
19	058807	2	2	□GASKET, seal ring
20	081788	4	-	□RING, inner seal (3/4" thick)
	651996	-	4	□RING, inner seal (1/2"thick)
21	058796	2	2	□FOLLOWER ASSEMBLY, inner seal (Serviced only as a unit)
22	058806	2	2	□BOOT, inner seal
23	056966	2	-	GUARD, seal
	651985	-	2	GUARD, seal
24	035061	8	8	CAPSCREW, 1/2"NC x 1-1/4"
	904208	8	8	LOCKWASHER, 1/2"

(Continued)

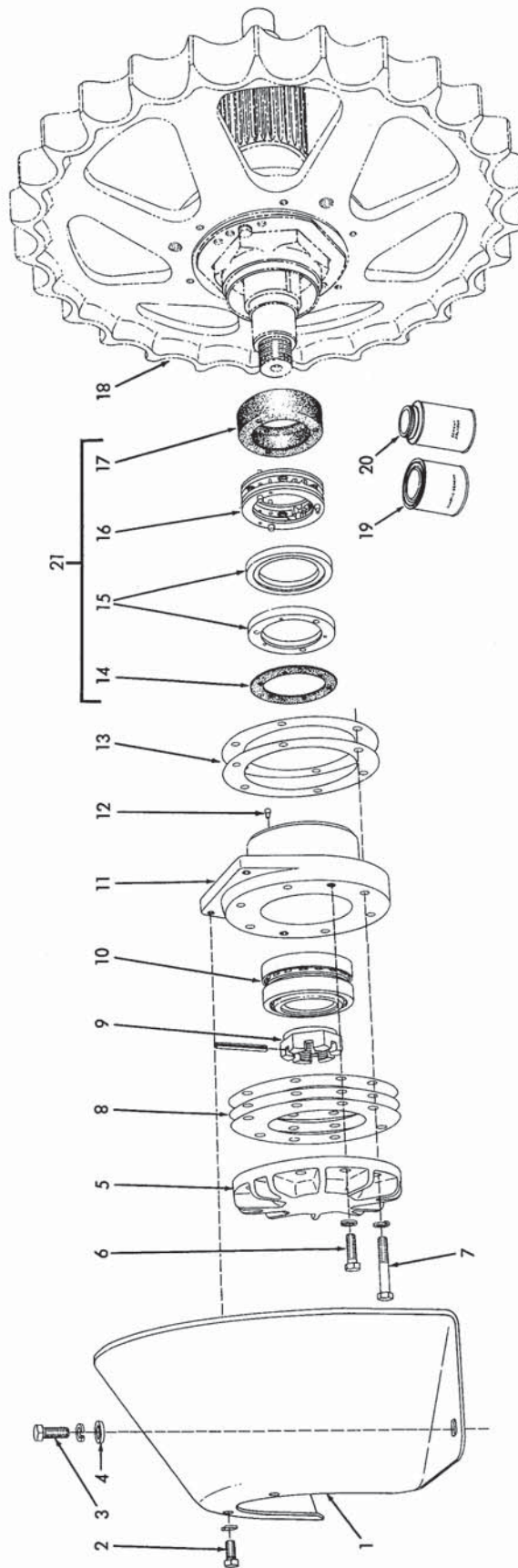


# FINAL DRIVE SPROCKET, SHAFT AND GEAR (Continued)

ITEM	PART NO.	QTY.		DESCRIPTION	
		*	**		
25	643970	2	-	SPROCKET, track	Standard type
	654500	-	2	SPROCKET, track	
26	643856	2	-	SPROCKET, track	Special. Skeleton tooth-base to minimize packing of track.
	660774	-	2	SPROCKET, track	
27	644100	2	2	RIM, track sprocket (Requires welding to install)	
28	084299	2	2	LOCK, sprocket retaining nut	
29	035221	4	4	CAPSCREW, 1/2"NC x 1"	
	904208	4	4	LOCKWASHER, 1/2"	
30	084236	2	2	NUT, sprocket retaining	
31	054890	-	-	SOLVENT, neoprene cement, 1/2 pint can	For cementing boots and gaskets
32	033288	-	-	CEMENT, neoprene, 1/2 pint can	
33	091973	2	-	SEAL KIT	Items 19 thru 22; includes parts for one (1) side only
	656664	-	2	SEAL KIT	

□Components of item 33





# FINAL DRIVE OUTBOARD BEARING AND SEAL

ITEM PART NO. QTY. DESCRIPTION

1	084326	2	GUARD, sprocket (Special equipment)	
2	035221	4	CAPSCREW, 1/2"NC x 1"	
3	070469	4	CAPSCREW, 1/2"NF x 1-1/4"	
4	064531	4	WASHER, plain	
	904208	8	LOCKWASHER, 1/2"	
5	084303	2	COVER, outboard bearing	
6	035018	4	CAPSCREW, 1/2"NF x 1-1/2"	
7	070403	12	CAPSCREW, 1/2"NF x 3"	
	904208	16	LOCKWASHER, 1/2"	
8	084313	4	SHIM, outer bearing cap (.005" thick)	} Use as req'd
	084312	4	SHIM, outer bearing cap (.007" thick)	
	084311	14	SHIM, outer bearing cap (.010" thick)	
9	058925	2	NUT, retaining, outer bearing	
	917904	2	PIN, roll, 5/16" x 3"	
10	058702	2	BEARING, roller, outboard (Each consists of 1 roller assembly and 2 cups. Serviced only as a unit)	
11	084271	2	CAGE, outboard bearing	
12	084432	6	PIN, outer seal ring	
13	069080	12	SHIM, outboard bearing cage (.015" thick. Use as req'd)	
14	069106	2	GASKET, seal ring	
15	081787	4	RING, outer seal	
16	084337	2	FOLLOWER ASSEMBLY, outer seal (Serviced only as a unit)	
17	058814	2	BOOT, outer seal	
18	-----	-	SPROCKET (See page 141)	
19	033288	-	CEMENT, neoprene, 1/2 pint can	} For cementing boots and gaskets
20	054890	-	SOLVENT, neoprene cement, 1/2 pint can	
21	091972	2	SEAL KIT (Items 12, 14, 15, 16, 17; includes parts for one (1) side only)	