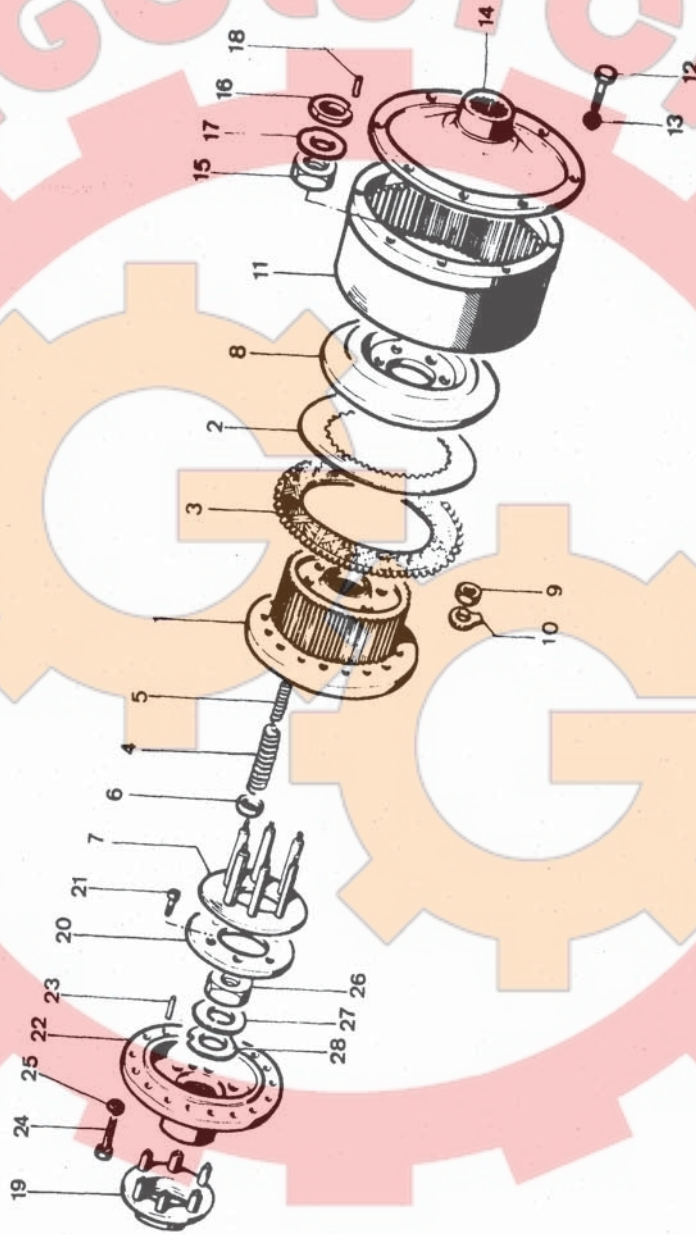


STEERING CLUTCH



Note	Ref.	MF numbers	Q.ty	Description	Denominazione	Description	Désignation	Benennung
	1	1453 324 M1	2	Drum	Tamburo	Tambor	Tambour	Trömmel
	2	980 131 M1	24	Disc	Disco	Disco	Disque	Kupplungsscheibe
	3	980 130 M1	24	Disc	Disco	Disco	Disque	Kupplungsscheibe
	4	1453 271 M1	12	Spring outer	Molla esterna	Resorte exterior	Ressort extérieur	Feder aussen
	5	1454 035 M1	12	Spring inner	Molla interna	Resorte interior	Ressort intérieur	Feder innen
	6	980 129 M2	24	Seat spring	Appoggio molla	Anillo guía	Anneau guide	Federteller
	7	1453 325 M91	2	Pressure plate	Anello guida molle	Plato de presión	Plateau pression	Druckplatte
	8	980 126 M3	2	Plate	Piatto	Placa	Plaque	Platte
	9	339 070 X1	12	Nut	Dado	Tuerca	Ecrou	Mutter
	10	1441 533 X1	12	Lockwasher	Piastrina di sicurezza	Bloqueo	Frein	Sicherungsblech
	11	980 135 M1	2	Drum outer	Tamburo esterno	Tambor exterior	Tambour extérieur	Trömmel aussen
	12	391 863 X1	24	Bolt	Vite	Perno	Boulon	Schraube
	13	1440 314 X1	24	Lockwasher	Rosetta elastica	Arandela de bloqueo	Rondelle grower	Federring
	14	980 132 M3	2	Cover	Coperchio	Cubierta	Couvercle	Deckel
	15	1440 243 X1	2	Nut	Dado	Tuerca	Ecrou	Mutter
	16	980 121 M3	2	Washer	Rondella	Arandela	Rondelle	Scheibe
	17	980 120 M3	2	Tabwasher	Rondella di sicurezza	Bloqueo	Frein	Sicherungsblech
	18	339 806 X1	2	Dowel	Spina	Espiga	Tetòn	Stift
	19	980 753 M93	2	Collar assy	Collare compl.	Manguito	Manchon	Ausrücker
	20	980 755 M2	2	Plate	Piattino	Placa	Plaque	Platte
	21	391 988 X1	6	Bolt	Vite	Perno	Vis	Schraube
	22	980 119 M4	2	Flange	Flangia	Brida	Flasque	Flansch
	23	339 806 X1	2	Dowel	Spina	Espiga	Tetòn	Stift
	24	391 319 X1	40	Bolt	Vite	Perno	Vis	Schraube
	25	1440 314 X1	40	Lockwasher	Rosetta elastica	Arandela de bloqueo	Rondelle grower	Federring
	26	1440 243 X1	2	Nut	Dado	Tuerca	Ecrou	Mutter
	27	980 120 M3	2	Washer	Rondella	Arandela	Rondelle	Scheibe
	28	980 121 M3	2	Washer flat	Rondella piana	Arandela llana	Rondelle plate	Scheibe