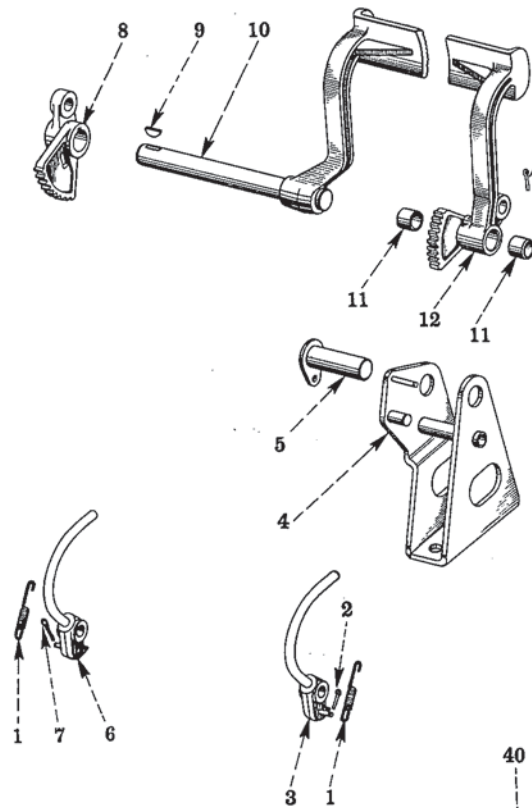


STEERING SYSTEM

STEERING BRAKES AND CONTROLS

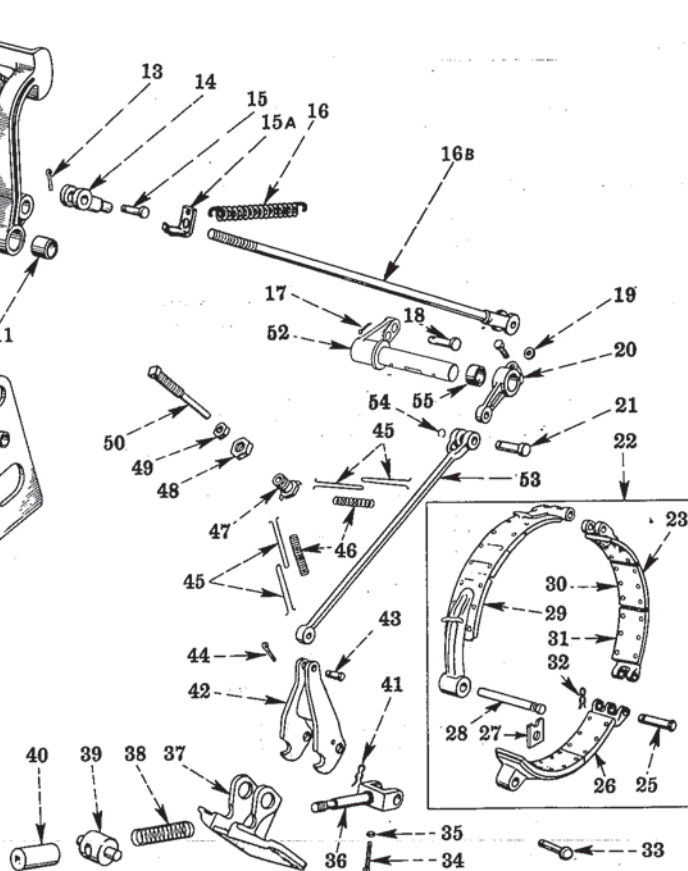


IPA-42429 D

REF. NO.	I.H. PART NUMBER	DESCRIPTION
1	272 182 R1	SPRING, brake locking pawl (2)
2		PIN, brake pedal ratchet pawl pivot cotter (1/8 x 3/4")
3	272 177 R91	PAWL, LH brake ratchet
4	274 200 R92	SUPPORT, LH brake pedal 5/8 x 1" hex-hd. cap SCREW (2) 17/32 x 1-1/16 x No. 13 ga. flat WASHER
5	272 174 R11	SHAFT, LH brake pedal 3/8 x 5/8" hex-hd. cap SCREW 3/8" lock WASHER
6	272 178 R91	PAWL, RH brake ratchet
7		PIN, brake pedal ratchet pawl pivot cotter (1/8 x 3/4")
8	272 176 R1	ARM and RATCHET, RH brake pedal 5/8 x 1-3/4" hex-hd. cap SCREW
9	103 909	KEY, brake pedal arm and ratchet (Woodruff No. 18, 1/4 x 1-1/8")
10	311 373 R11	PEDAL, RH brake (will work for 272 425 R92)
11	272 167 R1	BUSHING, LH brake pedal (2)
12	272 171 R21	PEDAL w/two BUSHING, 272 167 R1 LH brake

STEERING SYSTEM

STEERING BRAKES AND CONTROLS - CONTINUED



REF. NO.	I.H. PART NUMBER	DESCRIPTION	
13		PIN, steering brake rod outer adjustable clevis end cotter (5/32 x 1-1/8") (2)	
14	144 247	CLEVIS, adjusting steering brake rod outer (2)	
15	311 191 R1	PIN, steering brake rod outer adjustable clevis end (2)	
15A	277 061 R11	ANCHOR, brake pedal return spring (front) (2)	
16	23 370 D	SPRING, steering brake return (2)	
16B	272 157 R11	ROD, outer steering brake (2)	
17	103 373	PIN, 3/32 x 3/4" cotter (2)	
18	103 498	PIN, steering brake rod end (2) 3/4" jam NUT (2)	
19	20 841 D	KEY, steering brake lever inner (2)	
20	5 813 DC	LEVER, steering brake inner (2) 1/2 x 1-5/8" hex-hd SCREW (2) 1/2" lock WASHER (2)	
21	103 498	PIN, steering brake rod inner upper end (2)	
22	269 225 R91	BAND ASSEMBLY, steering brake (2) (Composed of -	
	1	BAND	269 215 R91
	1	BAND	269 218 R91
	1	BAND	269 224 R91
	2	PIN	269 173 R1
	2	RING	269 174 R1

STEERING SYSTEM

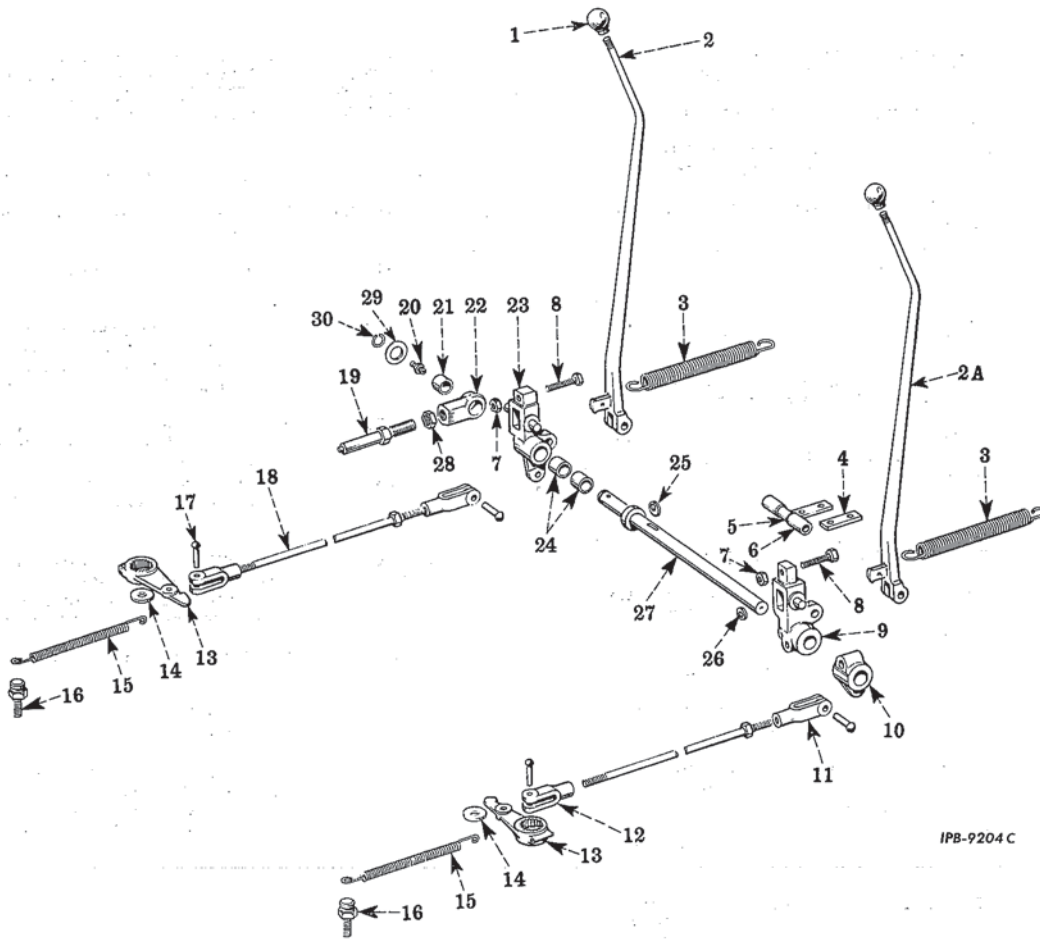
REF. NO.	I.H. PART NUMBER	DESCRIPTION
STEERING BRAKES AND CONTROLS - CONTINUED		
23	269 218 R91	BAND, w/LINING and eighteen RIVET, 269 164 R1, center steering brake (2)
25	304 948 R1	PIN, steering brake band hinge (4)
26	269 224 R91	BAND, w/LINING and eighteen RIVET, 269 164 R1, rear steering brake (2)
27	275 059 R1	RETAINER, upper steering brake band pivot joint pin (2) 3/8 x 3/4" hex-hd. cap SCREW (2) 3/8" lock WASHER (2)
28	275 058 R1	PIN, upper steering brake band pivot joint (2)
29	269 215 R91 269 226 R91	BAND, w/LINING and eighteen RIVET, 269 164 R1, front steering brake (2) PACKAGE w/nine LININGS and fifty-four RIVETS, 269 164 R1, field service (for tractors with standard size steering clutch brake drum) (X)
30		LINING, steering brake band (for tractors with standard size steering clutch brake drums) (order 269 226 R91) (18)
30		LINING, steering brake band (for tractors with undersize steering clutch brake drums) (order 272 864 R91) (18)
31	269 164 R1	RIVET, steering brake band lining (108)
32	148 151	SPRING, steering brake band hinge pin retaining (7/16" groove)
33	304 947 R1	PIN, steering brake band adjusting clevis (2)
34		SCREW, 3/8 x 2-1/4" sq-hd. set (2)
35		NUT, 3/8" jam (2)
36	269 179 R1	CLEVIS, steering brake band adjusting (2)
37	269 227 R2	BRACKET, LH steering brake anchor 1/2 x 1-1/4" hex-hd. cap SCREW (4) 1/2" internal-tooth, lock WASHER (4)
37	269 228 R2	BRACKET, RH steering brake anchor 1/2 x 1-1/4" hex-hd. cap SCREW (4) 1/2" internal-tooth, lock WASHER (4)
38	269 182 R1	SPRING, steering brake band release (2)
39	273 753 R1	PIN, lower steering brake pivot joint (2)
40	269 183 R1	NUT, steering brake band adjusting (2)
41	148 153	SPRING, steering brake band adjusting clevis pin retaining (9/16" groove)
42	269 186 R3	LEVER, steering brake pivot (2)
43	304 949 R1	PIN, steering brake rod inner lower end (2)
44		PIN, steering brake rod inner end cotter (1/8 x 3/4")
45	269 178 R1	HOOK, steering brake band anchor spring (8)
46	269 177 R1	SPRING, steering brake band anchor (4)
47	43 664 DC	ANCHOR, steering brake return spring (2)
48		NUT, 1" jam (2)
49	102 639	NUT, 5/8" (2)
50	53 505 D	SCREW, set steering brake band (2)

STEERING SYSTEM

REF. NO.	I.H. PART NUMBER	DESCRIPTION
STEERING BRAKES AND CONTROLS - CONTINUED		
52	272 427 R91 615 227 R1	LEVER, outer LH brake WASHER, 1-1/32" x 1-3/4" x No. 11 ga.
52	272 428 R91 615 227 R1	LEVER, outer RH brake WASHER, 1-1/32" x 1-3/4" x No. 11 ga.
53	269 229 R11	ROD, inner steering brake (2)
54	269 192 R1	RING, steering brake rod outer end pin retaining (2)
55	41 519 D	SEAL, steering brake lever outer dirt (2)
	109 459	FITTING, brake pedal support lubrication (Lincoln 5100) (optional with 271 282)
	291 282	FITTING, brake pedal support lubrication (Alemite 1611 BL) (optional with 109 459)
	109 459	FITTING, steering brake outer lever shaft lubrication (Lincoln 5100) (optional with 271 282) (2)
	271 282	FITTING, steering brake outer lever shaft lubrication (Alemite 1611 BL) (optional with 109 459) (2)
	109 461	FITTING, LH brake pedal lubrication (Lincoln 5000) (optional with 138 322 H)
	138 322 H	FITTING, LH brake pedal lubrication (Alemite 1610 BL) (optional with 109 461)
	179 843	ANCHOR, brake pedal return spring (rear) (2)
		NUT, 3/8" jam (for brake pedal return spring anchor, rear) (2)
	272 864 R91	PACKAGE w/nine LININGS and fifty-four RIVETS, 269 164 R1, field service (for tractors with undersize steering clutch brake drums) (X)
X - As Required		

STEERING SYSTEM

STEERING CLUTCH CONTROLS



IPB-9204C

REF. NO.	I. H. PART NUMBER	DESCRIPTION
1	264 097 R2	BALL, steering clutch band lever (2)
2	272 533 R22	LEVER, LH steering clutch hand
2A	272 533 R12	LEVER, RH steering clutch hand (TD-150 501 to 1913)
2A	307 487 R92	LEVER, RH steering clutch hand (TD-150 1914 to 4000) (TD-151 4001 up)
3	272 536 R1	SPRING, steering clutch hand lever return (2)
4	272 540 R1	RETAINER, steering clutch hand lever stop
5	272 537 R11	STOP w/two BUMPER, 272 539 R1 steering clutch hand lever 3/8 x 7/8" hex-hd. cap SCREW (2) 3/8" lock WASHER (2)
6	272 539 R1	BUMPER, steering clutch hand lever stop (2)
7		Follows Ref. No. 8
8	272 542 R1	SCREW, steering clutch hand lever hub adjustment (2) 1/2" jam NUT (2)

STEERING SYSTEM

STEERING CLUTCH CONTROLS - CONTINUED

REF. NO.	I. H. PART NUMBER	DESCRIPTION
9	279 576 R1	HUB, RH steering clutch hand lever 1/2" NF NUT 1/8 x 1" cotter PIN (2) 1/2NF x 2-1/4" hex-hd. cap SCREW 1/2" lock WASHER 21/32 x 1-5/16 x No. 13 ga. flat WASHER (2)
10	279 578 R1	ARM, steering clutch hand lever 1/2"NF NUT 1/2 x 2-1/4" hex-hd. cap SCREW 1/2" lock WASHER
11	63 229 D	YOKE, steering clutch operating rod (right hand thread) (2) (TD-15-501 to 3500)
11	311 446 R2	YOKE, steering clutch operating rod (right hand thread) (2) (TD-150 3501 to 4000) (TD-151 4001 up)
12	63 228 D	YOKE, steering clutch operating rod (left hand thread) (2) (TD-150 501 to 3500)
12	311 445 R2	YOKE, steering clutch operating rod (left hand thread) (2) (TD-150 3501 to 4000) (TD-151 4001 up)
13	272 321 R1	LEVER, steering clutch release (2) 3/8"NF NUT (2) 3/8NF x 2-1/2" hex-hd. cap SCREW (2) 3/8" lock WASHER (2)

STEERING SYSTEM

REF. NO.	I.H. PART NUMBER	DESCRIPTION
STEERING CLUTCH CONTROLS - CONTINUED		
14	45 794 D	WASHER, steering clutch release lever retainer (2) 1/2NF x 1-1/4" hex-hd. cap SCREW (2) 1/2" lock WASHER (2)
15	57 288 D	SPRING, steering clutch release lever return (2)
16	318 948 R1	ANCHOR, steering clutch release lever return spring (2) (TD-150-4001 Up)
16	276 187 R1	ANCHOR, steering clutch release lever return spring (2) (TD-150-501 to 4000) 1/2" lock WASHER (2)
17	33 557 V	PIN, steering clutch operating rod yoke (will work for 103 498) (4) 3/32 x 3/4" cotter PIN (4)
18	311 443 R11	ROD, steering clutch operating (2) (TD-150 3501 to 4000) (TD-151 4001 Up) 5/8" NUT (2)
	18 559 R1	NUT, 5/8" (left hand thread) (2)
18	60 230 DXA	ROD, steering clutch operating (2) (TD-150 501 to 3500) 1/2" NUT (2)
	18 277 R1	NUT, 1/2" (left hand thread) (2)
19	273 084 R11	ROD, steering clutch hand lever shaft tie
20	126 152	FITTING, 1/8" x 90° steering clutch hand lever shaft lubrication (Lincoln 5200) (optional with 271 283)
20	271 283	FITTING, 1/8" x 90° steering clutch hand lever shaft lubrication (Alemite 1688 B) (optional with 126 152)
21	272 301 R1	BUSHING, steering clutch hand lever shaft tie rod adjusting eye
22	273 085 R21	EYE w/BUSHING, 272 301 R1, adjusting, steering clutch hand lever shaft tie rod
23	272 534 R31	HUB w/two BUSHING, 272 301 R1, LH steering clutch hand lever 1/8 x 1" cotter PIN (2) 21/32 x 1-5/16 x No. 13 ga. flat WASHER (2)
24	272 301 R1	BUSHING, steering clutch hand lever hub (2)
25	279 577 R1	KEY, RH steering clutch hand lever arm (Woodruff No. 13)
26	279 577 R1	KEY, RH steering clutch hand lever hub (Woodruff No. 13)
27	272 248 R3	SHAFT, steering clutch hand lever (order PACKAGE, 322 963 R91, except for Equipment Combination, TD-15-700-0, order SHAFT, 322 938 R1, RING, 322 962 R1 and WASHER, 322 534 R1) TD-150 501 to 4000, TD-151 4001 to 5050
27	272 248 R4	SHAFT, steering clutch hand lever (not used on Equipment Combination TD-15-700-0) TD-151 5051 up
27	322 938 R1	SHAFT, steering clutch hand lever (used on Equipment Combination TD-15-700-0) TD-151 5051 up
28		NUT, steering clutch hand lever shaft tie rod adjusting (3/4" jam)
29	322 534 R1	WASHER, steering clutch hand lever shaft TD-151 5051 up

STEERING SYSTEM

REF. NO.	I.H. PART NUMBER	DESCRIPTION
STEERING CLUTCH CONTROLS - CONTINUED		
30	322 962 R1	RING, steering clutch hand lever shaft snap TD-151 5051 up
	322 963 R91	PACKAGE, steering clutch hand lever shaft field service (Consists of RING, 322 962 R1, SHAFT, 272 248 R4 and WASHER, 322 534 R1) TD-150 501 to 4000, TD-151 4001 to 5050
	98 795 H	PIN, steering clutch hand lever (2) 1/8 x 1" cotter PIN (2) 21/32 x 1-5/16 x No. 13 ga. flat WASHER (2)
	279 664 R1	WASHER, steering clutch hand lever shaft