



# MICHIGAN

## PARTS MANUAL

No. 4018-R-3

HANCOCK Model 210-H

(Scraper Section)


Information contained herein pertains to Scraper Section  
only on Machine Serial Numbers 213-1001 thru 213-1999

This manual supersedes Model  
210-H Parts Manual No. 4018-R-2


**CLARK EQUIPMENT COMPANY**

Construction Machinery Division

Model 210-H Elevating Scraper (Scraper Section)



# Warranty



Clark Equipment Company (CLARK) has warranted to the Distributor (Seller) who, pursuant to agreement with CLARK, hereby, on its own behalf, warrants to the Buyer each new CLARK product to be free from defects in material and workmanship under normal use and maintenance as herein provided.

Distributor's sole obligation under this warranty shall be limited to repairing, replacing or allowing credit for, at Distributor's option, any part which under normal and proper use and maintenance proves defective in material or workmanship within six (6) months after delivery to or one thousand (1,000) hours of use by Buyer, whichever shall occur first; provided, however, that (i) the product is placed in use not later than one year after shipment from CLARK'S plant; (ii) that notice of any such defect and satisfactory proof thereof is promptly given by Buyer to Distributor; and (iii) such material shall have been returned to Distributor, with transportation charges prepaid and found by Distributor to have been defective.

This warranty does not apply in respect of damage to or defects in any product caused by overloading or other misuse, neglect or accident, nor does this warranty apply to any product which has been repaired or altered in any way which, in the sole judgment of Distributor, affects the performance, stability or general purpose for which it was manufactured.

THIS WARRANTY IS IN LIEU OF ALL OTHER WARRANTIES (EXCEPT OF TITLE), EXPRESSED OR IMPLIED, AND THERE ARE NO WARRANTIES OF MERCHANTABILITY OR OF FITNESS FOR A PARTICULAR PURPOSE. IN NO EVENT SHALL DISTRIBUTOR BE LIABLE FOR CONSEQUENTIAL OR SPECIAL DAMAGES.

This warranty does not apply to parts or trade accessories not manufactured by CLARK, or attachments not manufactured or sold by CLARK. Buyer shall rely solely on the existing warranties, if any, of the respective manufacturers thereof.

**CLARK**  
EQUIPMENT



## IMPROVEMENTS

It is CLARK'S policy to constantly strive to improve its products. The right therefore is reserved to make changes in design and improvements whenever it is believed the efficiency of the product will be improved thereby, but without incurring any obligation to incorporate such improvements in any product which has been shipped or is in service.

# MICHIGAN

## PARTS MANUAL

No. 4018 - R - 3

HANCOCK Model 210-H

(Scraper Section)

Information contained herein pertains to Scraper Section  
only on Machine Serial Numbers 213-1001 thru 213-1999

Record Your Machine  
Serial Number Here

---

This manual supersedes Model  
210-H Parts Manual No. 4018-R-2

**CLARK EQUIPMENT COMPANY**  
Construction Machinery Division

**WHEN ORDERING REPAIR PARTS**

To assure the best results and to maintain the original quality built into the machine it is important that only Clark-Approved Parts be used when new parts are required.

**IMPORTANT: Always furnish the distributor with the machine serial number when ordering parts.**

Order through your nearest Clark Distributor, for THE MICHIGAN LINE.

Always give serial number of machine.

Furnish: Quantity, Part Number and Description.

**WHEN PARTS ARE RECEIVED**

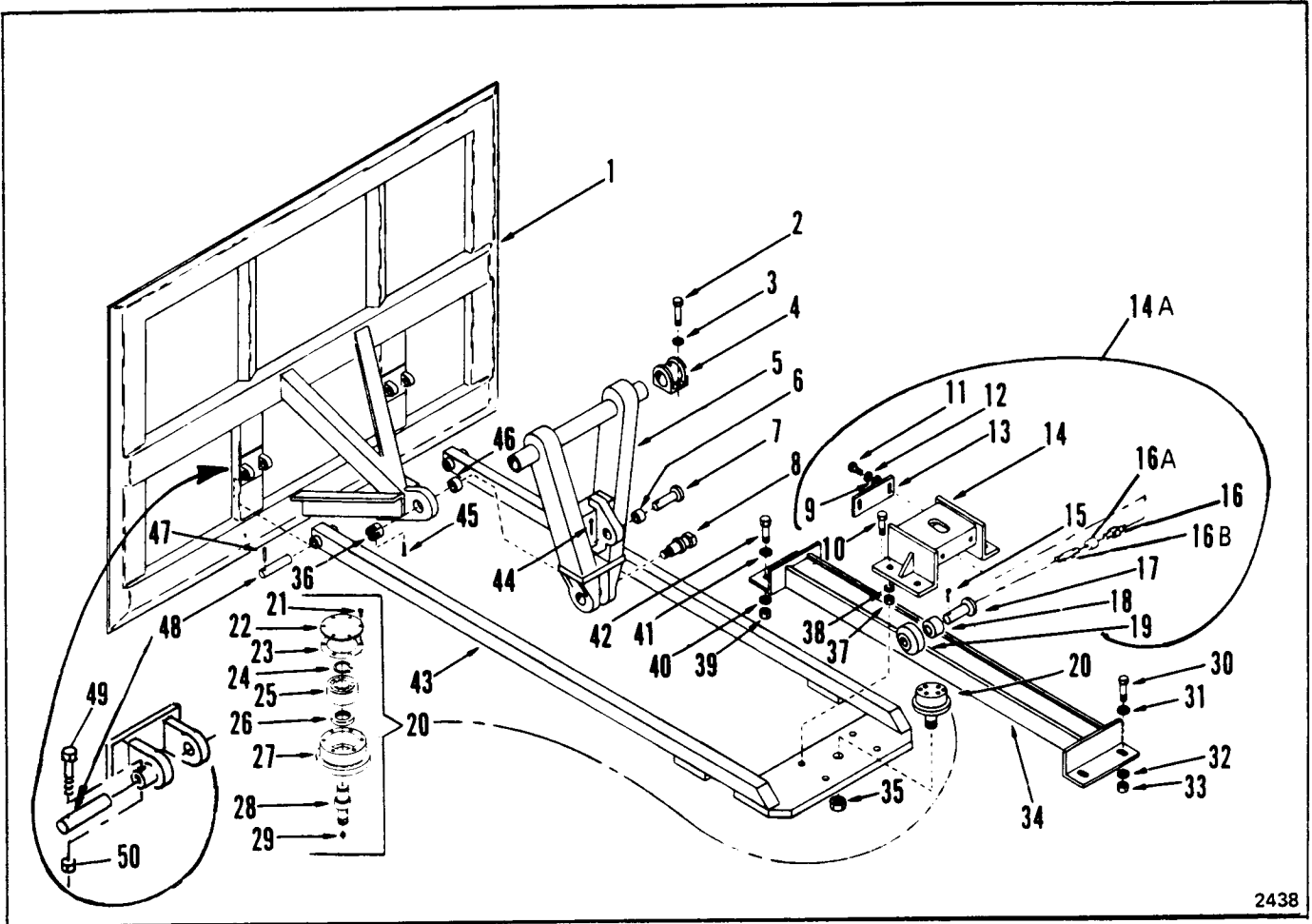
Check immediately for quantity, correctness and condition.

Advise your Michigan Distributor of any error.

Claims for damages, during shipment, should be made to the carrier immediately.

**INDEX MODEL 210H**

<b>A</b>			
Accessories & Options.....	37		
Adjuster – Elevator Chain .....	14		<b>G</b>
Air Group			
Air System – Scraper Brake – For		Gearbox – Elevator .....	30
Serial: 213-1001 thru 213-1035 .....	19		<b>H</b>
Air System – Scraper Brake – For		Hydraulic Group	
Serial: 213-1036 Thru 1198 .....	21	Cylinder – Hydraulic Lift and Ejection ....	27
Air System – Scraper Brake – For		Hydraulic Elevator System – Scraper .....	26
Serial 213 – 1199 and After .....	21B	Hydraulic Lines – Scraper Ejection .....	24
Axle – Scraper Rear .....	15	Hydraulic Lines – Scraper Lift .....	22
<b>B</b>			
Brake and Drum – Scraper .....	16		<b>I</b>
<b>C</b>			
Chain – Elevator .....		Idler Roller – Chain .....	11
Chain – Elevator .....	10		<b>L</b>
Cylinder – Hydraulic Lift and Ejection .....	27		
<b>D</b>			
Decals and Name Plates .....	35	Lubrication – Scraper Central .....	32
<b>E</b>			
Elevator Group .....	7		<b>M</b>
Adjuster – Elevator Chain .....	14	Motor – Elevator Hydraulic .....	
Chain – Elevator .....	10		<b>O</b>
Gearbox – Elevator .....	30	Options & Accessories.....	37
Idler Roller – Chain .....	11		<b>S</b>
Motor – Elevator Hydraulic .....	29	Stub Spindle – Lower .....	12
Stub Spindle – Lower .....	12	Stub Spindle – Upper .....	13
Stub Spindle – Upper .....	13		<b>W</b>
Endgate and Stabilizer Group .....	2	Wheel and Tire Data .....	34
<b>F</b>		Wiring, Pipe and Hose Clips .....	36
Floor Group – Rolling .....	3		<b>Y</b>
Frame – Scraper Main .....	4	Yoke – Scraper .....	6



2438

**ENDGATE AND STABILIZER GROUP**

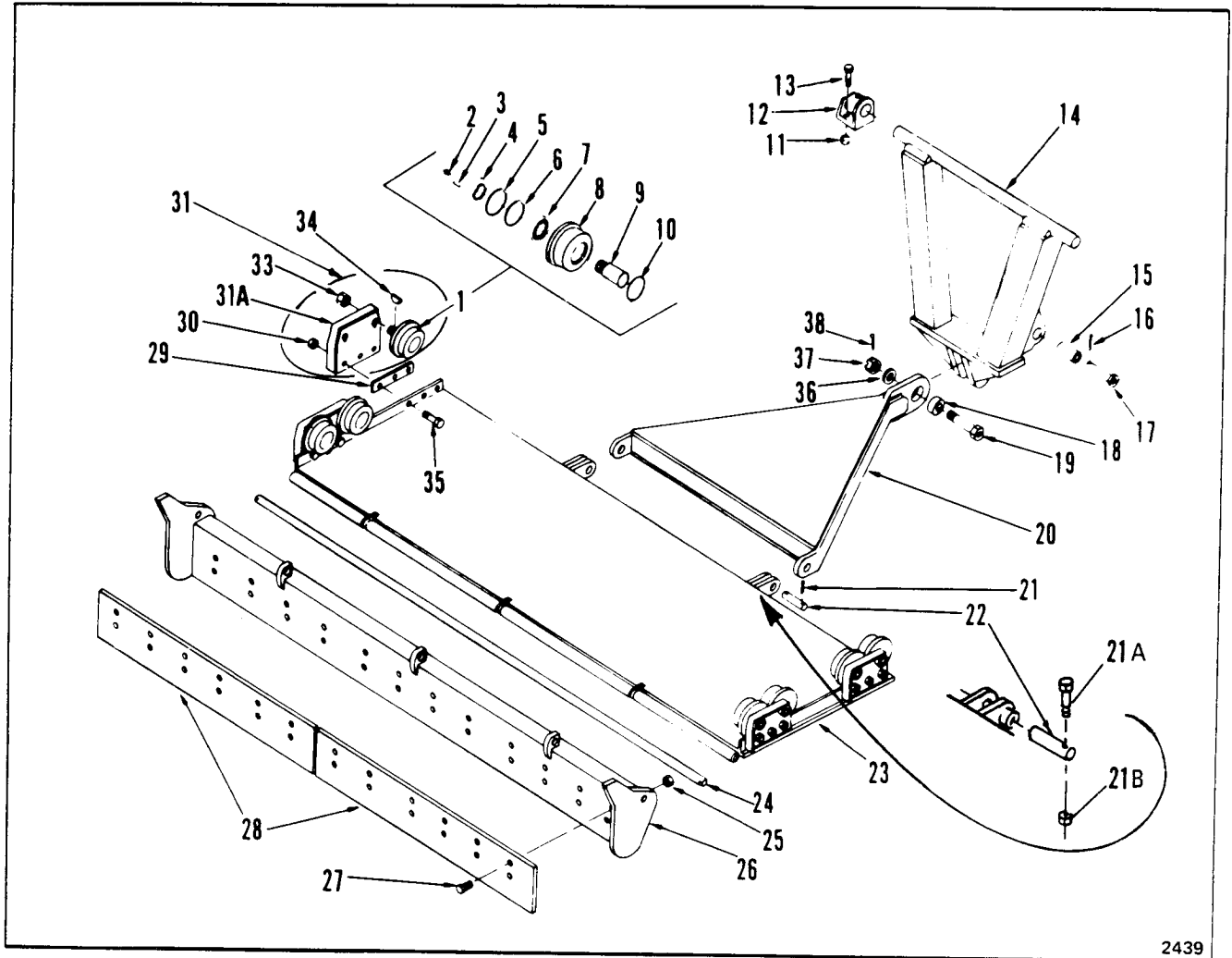
Item	Part No.	Description	Qty.
1	1556631	ENDGATE.	1
2	17C-1236	BOLT	4
3	59D-16	NUT	4
4	1556457	HANGER	2
5	1579860	ACTUATOR	1
6	1574466	BUSHING	2
7	1564317	PIN.	1
8	1555981	PIN, Bolt.	1
9	25E-14	WASHER.	2
10	17C-840	BOLT	4
11	17C-416	BOLT	4
12	4E-04	LKWSHR.	4
13	1556091	CLEANER.	2
14	1556071	BRACKET, Stabilizer.	1
14A	1556102	BRACKET ASSY (Inc 9, 11 thru 19)	1
15	1F-432	COTTER.	1
16	11H-15	FITTING, Grease	1
16A	75F-01	COUPLING	1
16B	5K-124	NIPPLE.	1
17	1556084	PIN.	1
18	1556089	BUSHING	1
19	1556092	ROLLER.	1
19A	1556087	ROLLER ASSY (Inc 18 & 19)	1
20	1556288	ROLLER ASSY (Inc 21 thru 29)	1
21	9G-410	BOLT, Socket Head.	4
22	1556080	CAP	1
23	1556081	GASKET.	1

Item	Part No.	Description	Qty.
24	654613	RING	1
25	302712	BEARING	2
26	206557	SEAL	1
27	1556078	ROLLER.	1
28	1556287	SHAFT, Roller.	1
28A	5J-606	†KEY	1
29	10H-25	FITTING, Grease	1
30	17C-1236	BOLT	2
31	25E-28	WASHER.	2
32	25E-28	WASHER.	2
33	59D-12	NUT	2
34	1556644	TRACK, Stabilizer.	1
35	60D-22	NUT	1
36	66D-22	NUT	1
37	59D-08	NUT	4
38	25E-22	WASHER.	8
39	59D-12	NUT	2
40	25E-28	WASHER.	2
41	25E-28	WASHER.	2
42	17C-1232	BOLT	2
43	1556623	FRAME, Stabilizer	1
44	1F-432	COTTER.	1
45	1F-840	COTTER.	1
46	1300394	BUSHING	1
47	730131	PIN, Roll.	2
48	1562444	PIN.	2
49	17C-752	*BOLT	2
50	59D-07	*NUT	2

\*NOTE: Use Where applicable.

† Not Illustrated

**WHEN ORDERING PARTS, ALWAYS STATE MODEL AND SERIAL NO. OF MACHINE**



2439

**FLOOR GROUP – ROLLING**

Item	Part No.	Description	Qty.
1	1556289	ROLLING FLOOR ROLLER ASSY (Inc 2 thru 10)	8
2	10H-25	FITTING, Grease	1
3	6J-809	KEY	1
4	1556271	SPACER	1
5	1550991	SEAL	1
6	662003	RING, Retaining	1
7	675264	BEARING	1
8	1556270	ROLLER	1
9	1556309	SHAFT	1
10	12F-308	PLUG, Expansion	1
11	59D-16	NUT	4
12	1555984	HANGER	2
13	17C-1636	BOLT	4
14	1556602	ACTUATOR, Floor	1
15	1300394	BUSHING (Inc 15)	1
16	1F-844	COTTER	1
17	1564317	PIN	1
18	1574466	BUSHING	1
19	1555981	BOLT, Pin	1
20	1556638	STABILIZER, Yoke (Inc 18)	1
21	730131	PIN, Roll	2
21A	17C-748	*BOLT	2

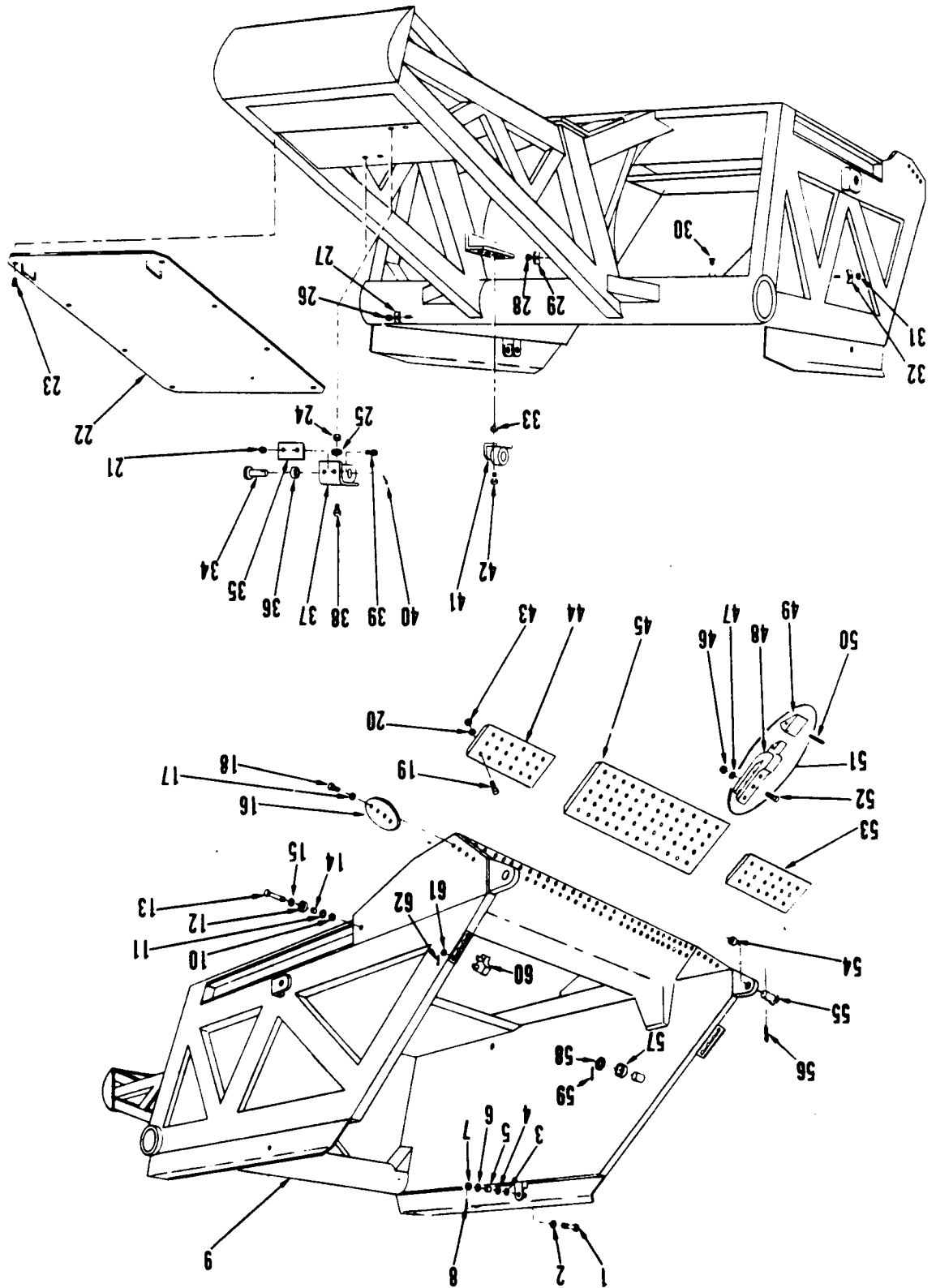
Item	Part No.	Description	Qty.
21B	59D-07	*NUT	2
22	1562442	PIN	2
23	1556597	FLOOR, Rolling	1
24	1556093	ROD	1
25	59D-12	NUT	12
26	1556303	FRAME, Strike-Off	1
27	17C-1240	BOLT	12
28	1556307	BLADE	2
29	1555977	‡SHIM, Roller	—
30	59D-16	NUT	12
31	1562458	HANGER, R.H. Roller Assy (Inc 1, 31A, 33 & 34)	2
31A	1562456	HANGER, R.H.	2
32	1556641	†HANGER, L.H. Roller Assy (Inc 1, 32A, 33 & 34)	2
32A	1562457	†HANGER, L.H.	2
33	65D-20	NUT	8
34	6J-809	KEY	8
35	17C-1632	BOLT	12
36	25E-38	WASHER	1
37	66D-22	NUT	1
38	1F-840	COTTER	1

\*NOTE: Use Where applicable † Not Illustrated ‡ As Required

**WHEN ORDERING PARTS, ALWAYS STATE MODEL AND SERIAL NO. OF MACHINE**

1068

FRAME - SCRAPER MAIN



FRAME – SCRAPER MAIN

Item	Part No.	Description	Qty.	Item	Part No.	Description	Qty.
1	1550937	BOLT, Elevator Arm to Frame	2	34	1564317	PIN, Cylinder	2
2	25E-31	FLATWASHER	2	35	1555318	‡SHIM, 1/8 inch Hanger to Frame	—
3	1560524	‡SPACER, 1/8 inch	—	36	1574466	BUSHING	2
4	1560523	‡SPACER, 1/4 inch	—	37	1555299	HANGER, Cylinder	2
5	1560439	BUSHING, Elevator Arm	2	38	17C-1652	BOLT, Hanger to Frame	4
6	25E-31	FLATWASHER	2	39	17C-1660	BOLT, Hanger to Frame	4
7	6D-16	NUT, Castle	2	40	1F-844	COTTER, Cylinder Pin	2
8	1F-432	COTTER, Elevator Arm Bolt	2	41	1555984	HANGER, Floor Actuator	2
9	1555312	FRAME, Scraper Main	1	41A	1556457	†HANGER, Endgate Actuator	2
10	17D-12	NUT	2	42	17C-1636	BOLT, Hanger to Frame	8
11	25E-31	FLATWASHER	2	43	61D-12	NUT	42
12	1562333	ROLLER, Floor Stop	2	44	1576032	BLADE, Cutting	1
13	15C-16104	BOLT, Roller to Frame	2	45	1574827	BLADE, Center Cutting	1
14	1555779	BUSHING, Stop Roller	2	46	61D-12	NUT	18
15	25E-31	FLATWASHER	2	47	4E-12	LKWSHR	18
16	1555313	BLADE, Side Cutter	2	48	— — —	§SHANK, Chisel (See 51)	6
17	17D-10	NUT	8	49	1572839	POINT, Chisel	6
18	17C-1256	BOLT, Blade to Frame	8	50	1572889	PIN, Chisel	6
19	1552070	BOLT, Blade to Frame Plow	42	51	1572840	ASSY, Chisel (Inc 48, 49, 50)	6
20	4E-12	LKWSHR	42	52	1552075	BOLT, Plow	18
21	6D-16	NUT, Castle	2	53	1576032	BLADE, Cutting	1
22	1555291	COVER, Tail Frame	1	54	1574466	BUSHING	2
23	1550938	BOLT, Self Tapping	8	55	1564317	PIN, Cylinder	2
24	17D-12	NUT	4	56	1F-844	COTTER, Cylinder Pin	2
25	25E-32	FLATWASHER	4	57	1584492	BUSHING, Elevator Arm to Frame	2
26	17D-03	NUT	2	58	1580790	COLLAR	2
27	1557908	CLAMP	2	59	17C-896	BOLT	2
28	17D-03	NUT	2	59A	59D-08	†NUT	2
29	1557904	CLAMP	2	60	1561144	BLOCK, L.H. Elevator Adjustment	1
30	72F-02	PETCOCK, Air	1	60A	1561145	‡BLOCK, R.H. Elevator Adjustment	1
31	17D-03	NUT	2	61	25E-30	FLATWASHER	4
32	1557532	CLAMP, Tubing	2	62	1F-624	COTTER, Adjustment Block	4
33	17D-12	NUT	8				

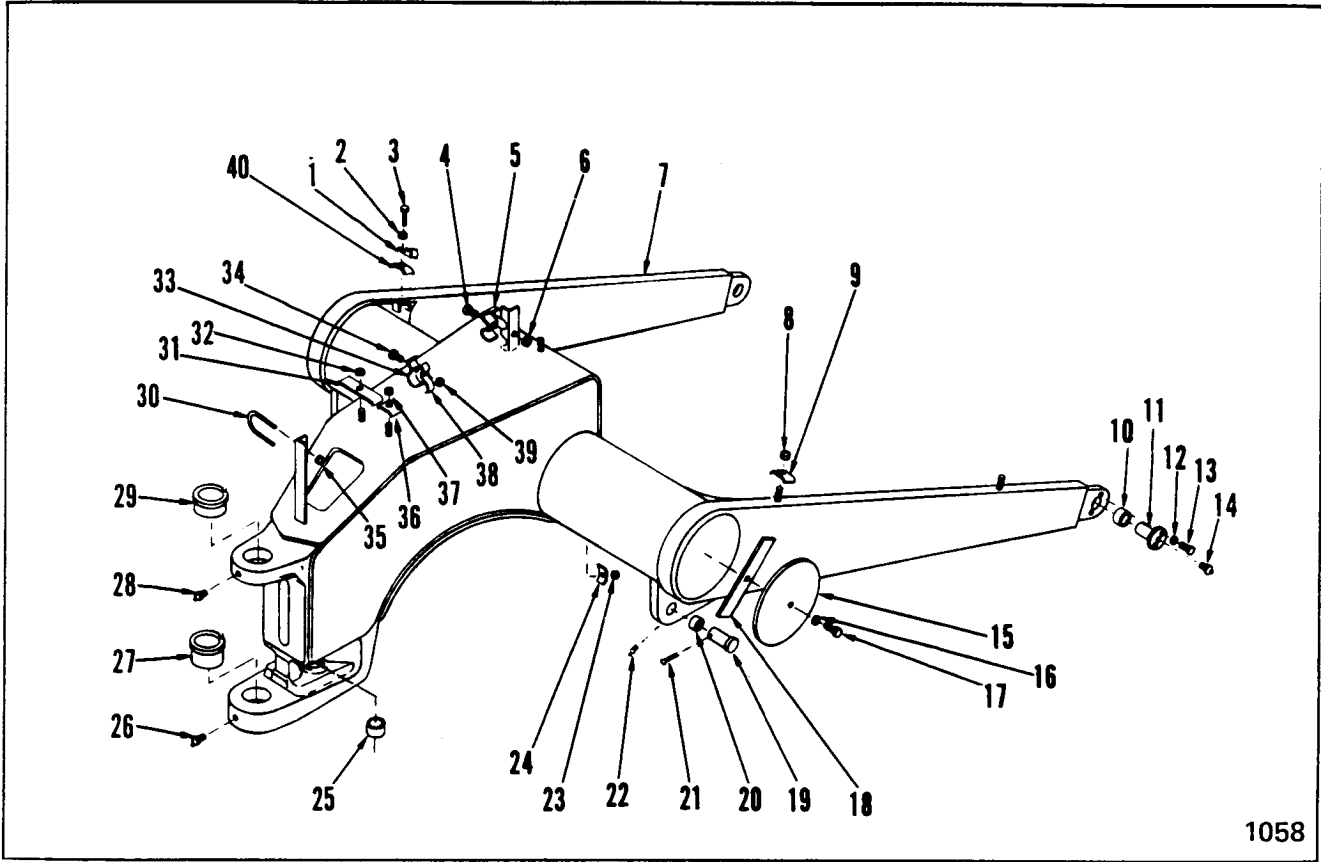
† Not Illustrated

‡ As Required

§ Not Sold Separately

WHEN ORDERING PARTS, ALWAYS STATE MODEL AND SERIAL NO. OF MACHINE





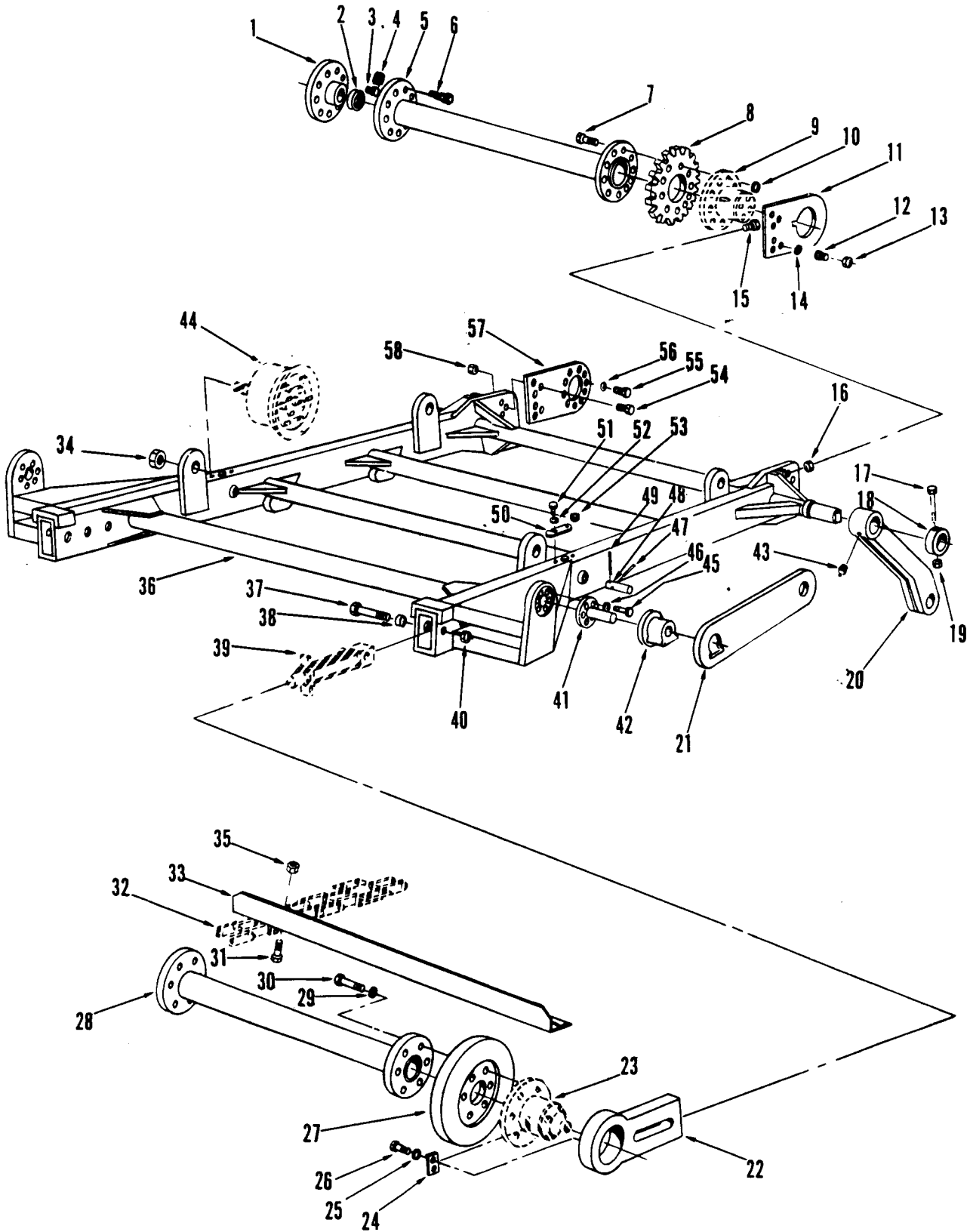
1058

**YOKE-SCRAPER**

Item	Part No.	Description	Qty.
1	1563444	CLAMP, Tubing . . . . .	1
2	17D-06	NUT . . . . .	1
3	17C-860	BOLT, Clamp to Yoke . . . . .	1
4	17C-656	BOLT, Clamp to Yoke . . . . .	1
5	1582692	CLAMP, Tubing . . . . .	1
6	17D-03	NUT . . . . .	1
7	1567595	YOKE, Scraper . . . . .	1
8	17D-03	NUT . . . . .	2
9	1557904	CLAMP, Tubing . . . . .	2
10	669896	BUSHING, Yoke to Main Frame . . . . .	2
11	1554173	PIN, Yoke . . . . .	2
12	4E-08	LKWSHR . . . . .	4
13	17C-824	BOLT, Pin to Main Frame . . . . .	4
14	10H-25	FITTING, Grease . . . . .	2
15	1552746	PLATE, Yoke End . . . . .	2
16	4E-08	LKWSHR . . . . .	2
17	17C-824	BOLT, Plate to Yoke . . . . .	2
18	1552667	STRAP, Plate Mounting . . . . .	2
19	1564317	PIN, Cylinder . . . . .	2
20	1300394	BUSHING, Yoke to Cylinder . . . . .	2

Item	Part No.	Description	Qty.
21	1F-844	COTTER, Cylinder Pin . . . . .	2
22	10H-25	FITTING, Grease . . . . .	2
23	17D-03	NUT . . . . .	2
24	1557904	CLAMP, Tubing . . . . .	2
25	565479	BUSHING, Steering . . . . .	2
26	10H-25	FITTING, Grease . . . . .	1
27	1524742	BUSHING, Lower . . . . .	1
28	10H-25	FITTING, Grease . . . . .	1
29	1509299	BUSHING, Upper . . . . .	1
30	1557674	U-BOLT, Tubing to Yoke . . . . .	2
31	1557905	CLAMP, Tubing . . . . .	2
32	17D-03	NUT . . . . .	2
33	610323	CLAMP, Tubing . . . . .	2
34	17C-424	BOLT, Clamp to Clamp . . . . .	2
35	17D-06	NUT . . . . .	4
36	1557904	CLAMP, Tubing . . . . .	2
37	17D-03	NUT . . . . .	2
38	610323	CLAMP, Tubing . . . . .	2
39	17D-03	NUT . . . . .	2
40	1582692	CLAMP, Tubing . . . . .	1

**WHEN ORDERING PARTS, ALWAYS STATE MODEL AND SERIAL NO. OF MACHINE**



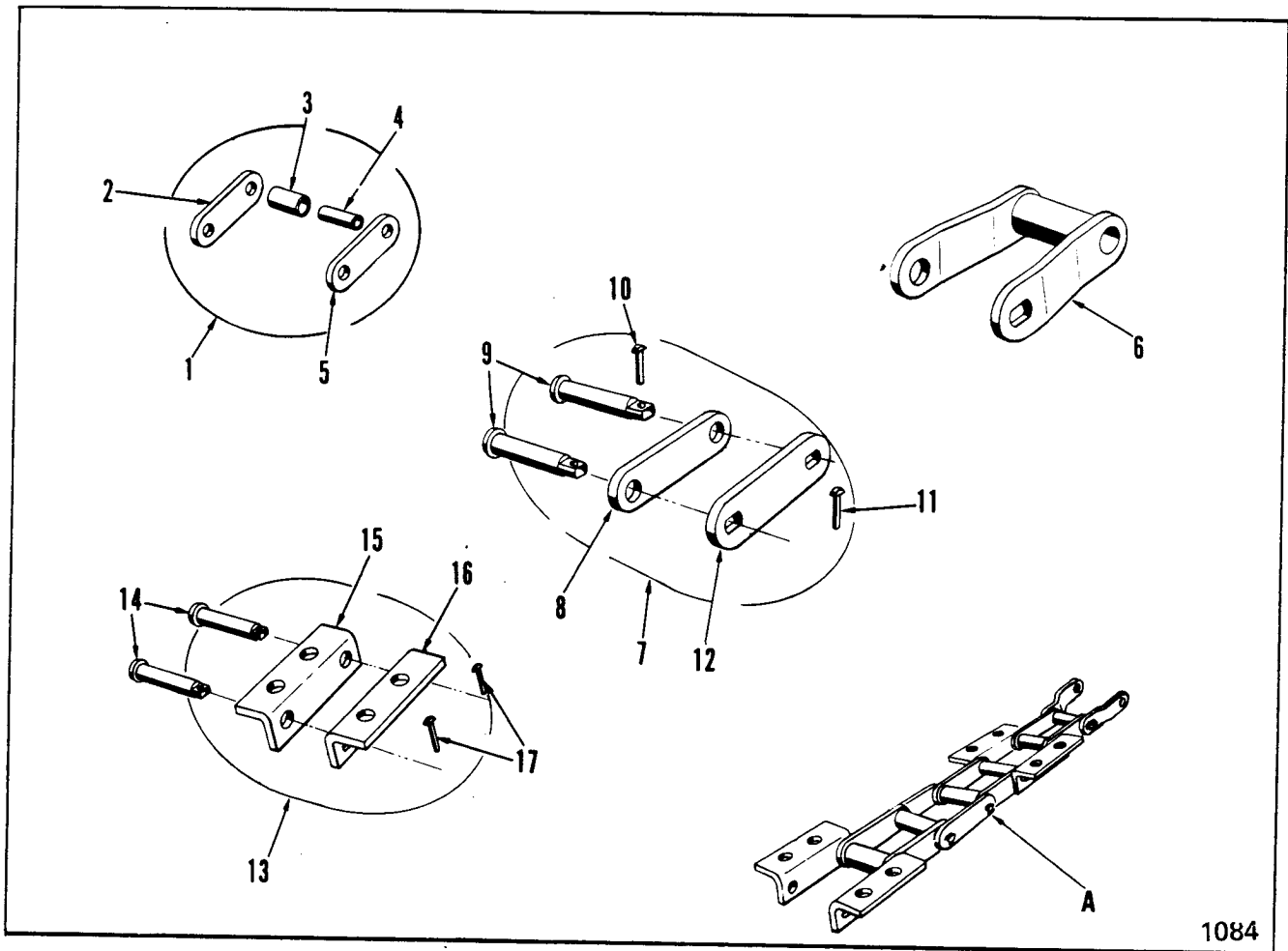
ELEVATOR GROUP

**ELEVATOR GROUP**

Item	Part No.	Description	Qty.
A	1574726	ELEVATOR ASSY (Inc 1 thru 16, 22 thru 41, 45 thru 58, plus Gearbox & Motor) .....	1
1	1560444	HUB, Gearbox .....	1
2	1561461	NUT .....	1
3	11G-406	BOLT, Socket Head .....	1
4	59D-10	NUT .....	10
5	1560442	ROLLER, Elevator Head .....	1
6	17C-1064	BOLT .....	10
7	17C-1060	BOLT, Sprocket to Stub Spindle ..	10
8	1560411	SPROCKET, Elevator Chain .....	2
9	-----	STUB SPINDLE ASSY (See Index) .....	-
10	59D-10	NUT .....	20
11	1560728	HANGER, Head Roller .....	1
12	17C-1664	BOLT, Hanger to Frame .....	6
13	17D-12	NUT .....	6
14	25E-32	WASHER .....	10
15	1550751	BOLT, Head Roller Adjustment ....	2
16	7D-12	NUT, Jam .....	2
17	17C-880	BOLT, Retainer to Frame .....	2
18	1560528	RETAINER, Upper Arm .....	2
19	17D-06	NUT .....	2
20	1571856	ARM, Upper Elevator .....	2
21	1561152	ARM, Lower Elevator .....	2
22	1561160	HANGER, Tail Roller .....	2
23	-----	STUB SPINDLE ASSY (See Index) .....	-
24	1561162	RETAINER, Stub Spindle (For Serial: 213-1001, 213-1013 & After)....	2
24A	1563447	RETAINER, Stub Spindle (For Serial: 213-1002 thru 213-1012) .....	2
25	4E-06	LKWSHR .....	4
26	17C-616	BOLT, Retainer to Hanger .....	4

Item	Part No.	Description	Qty.
27	1561134	ROLLER, Chain .....	2
28	1561139	ROLLER, Elevator Tail .....	1
29	4E-10	LKWSHR .....	12
30	17C-1048	BOLT, Roller to Stub Spindle ....	12
31	17C-1028	BOLT, Drag to Chain .....	144
32	-----	SET, Elevator Chain (See Index) ....	-
33	1571750	DRAG, Elevator .....	18
34	1565086	NUT .....	4
35	59D-10	NUT .....	144
36	1564343	FRAME, Elevator .....	1
37	16C-2096	BOLT, Hanger to Frame .....	6
38	1561042	SPACER, Bolt to Hanger .....	6
39	-----	ELEVATOR CHAIN ADJUSTER ASSY (See Index) .....	-
40	60D-20	NUT .....	6
41	1561143	SHAFT, Arm Mounting .....	2
42	1560702	BUSHING, Flat .....	2
43	12H-15	FITTING, Grease .....	2
44	-----	CHAIN IDLER ROLLER ASSY (See Index) .....	-
45	17C-1240	BOLT, Shaft to Frame .....	12
46	4E-12	LKWSHR .....	12
47	106023	PIN, Roll .....	2
48	1561041	PIN, Adjuster to Frame .....	2
49	654620	PIN, Roll .....	2
50	1560994	COVER, Adjustment .....	2
51	17C-612	BOLT, Cover to Frame .....	4
52	4E-06	LKWSHR .....	4
53	1560995	SPACER .....	2
54	17C-1656	BOLT, Hanger to Frame .....	6
55	1550751	BOLT, Hanger to Gearbox .....	12
56	4E-12	LKWSHR .....	12
57	1560724	HANGER, Gearbox .....	1
58	59D-16	NUT .....	20

**WHEN ORDERING PARTS, ALWAYS STATE MODEL AND SERIAL NO. OF MACHINE**



1084

**CHAIN – ELEVATOR**

Item	Part No.	Description	Qty.
A	1571638	*SET, Elevator Chain (Inc: 1 LH Chain Assy & 1 RH Chain Assy) .....	1
*NOTE: One (1) Elevator Chain set is required per elevator – Quantities listed below are for one (1) elevator chain assy. It is strongly recommended chains be installed in sets to assure equal lengths.			
1	1569540	ASSY, Block Link (Inc: 2 thru 5)	36
2	1550947	LINK, Block .....	1
3	1550946	**ROLLER .....	2
4	1550940	**BUSHING .....	2
5	1550947	LINK, Block .....	1

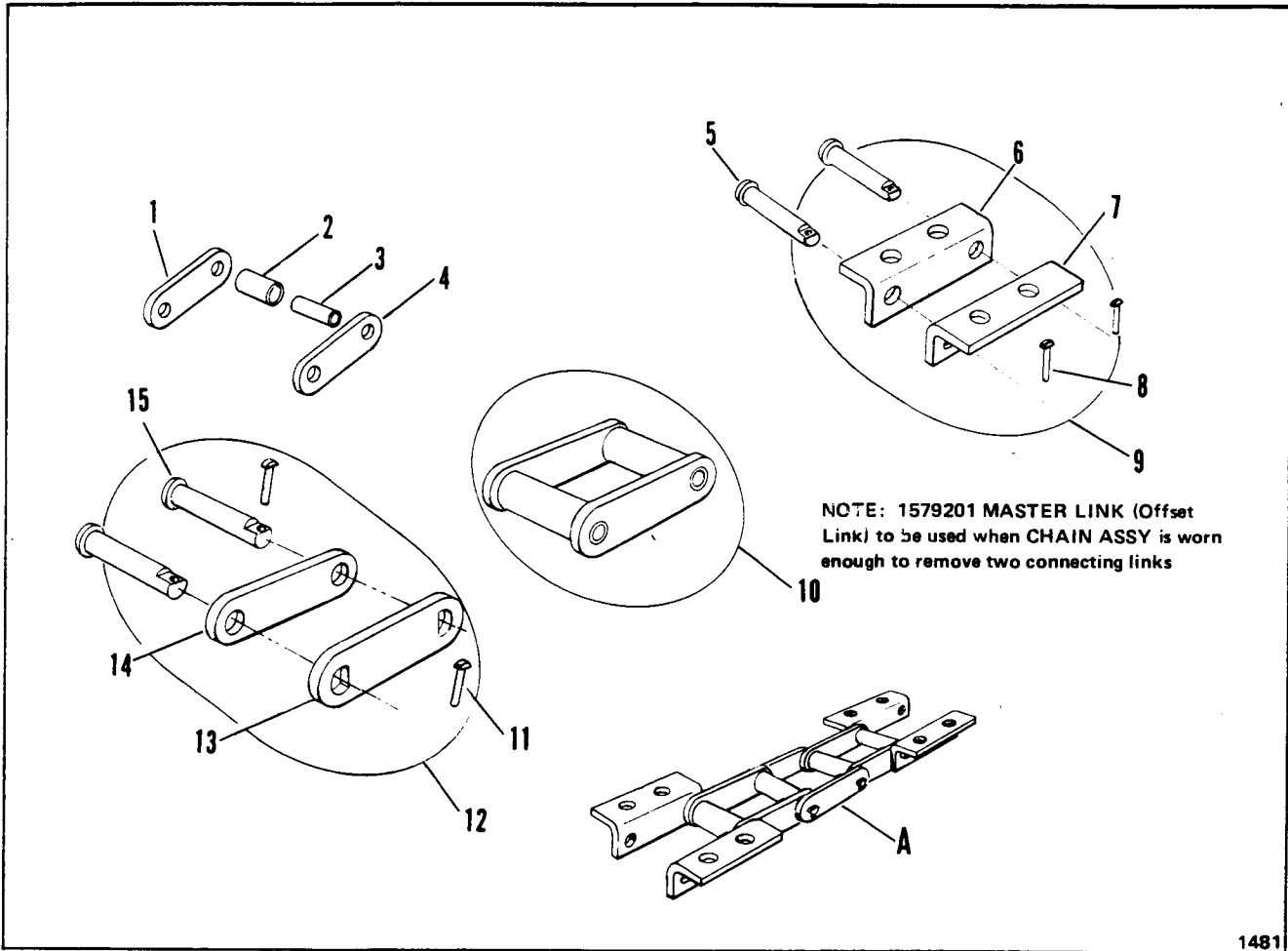
Item	Part No.	Description	Qty.
6	1566477	LINK, Master .....	1
7	1580737	ASSY, Connecting Link (Inc: 8 thru 12) .....	18
8	1550943	LINK, Head Side Connecting ....	1
9	1576902	****PIN, Link (Inc: 10) .....	2
10	1566481	***KEY, Lock .....	1
11	1566481	***KEY, Lock .....	1
12	1550941	LINK, Key Side Connecting ....	1
13	1580738	ASSY, Attachment Link (Inc: 14 thru 17) .....	18
14	1576902	PIN, Link (Inc: 17) .....	2
15	1580733	LINK, Head Side Attachment ....	1
16	1580734	LINK, Key Side Attachment ....	1
17	1551929	***KEY, Lock .....	2

\*\* NOTE: 72 required per chain or 144 required per set

\*\*\* NOTE: Sold in lots of 100 only

\*\*\*\* NOTE: 73 required per chain or 146 required per set.

**WHEN ORDERING PARTS, ALWAYS STATE MODEL AND SERIAL NO. OF MACHINE**



1481

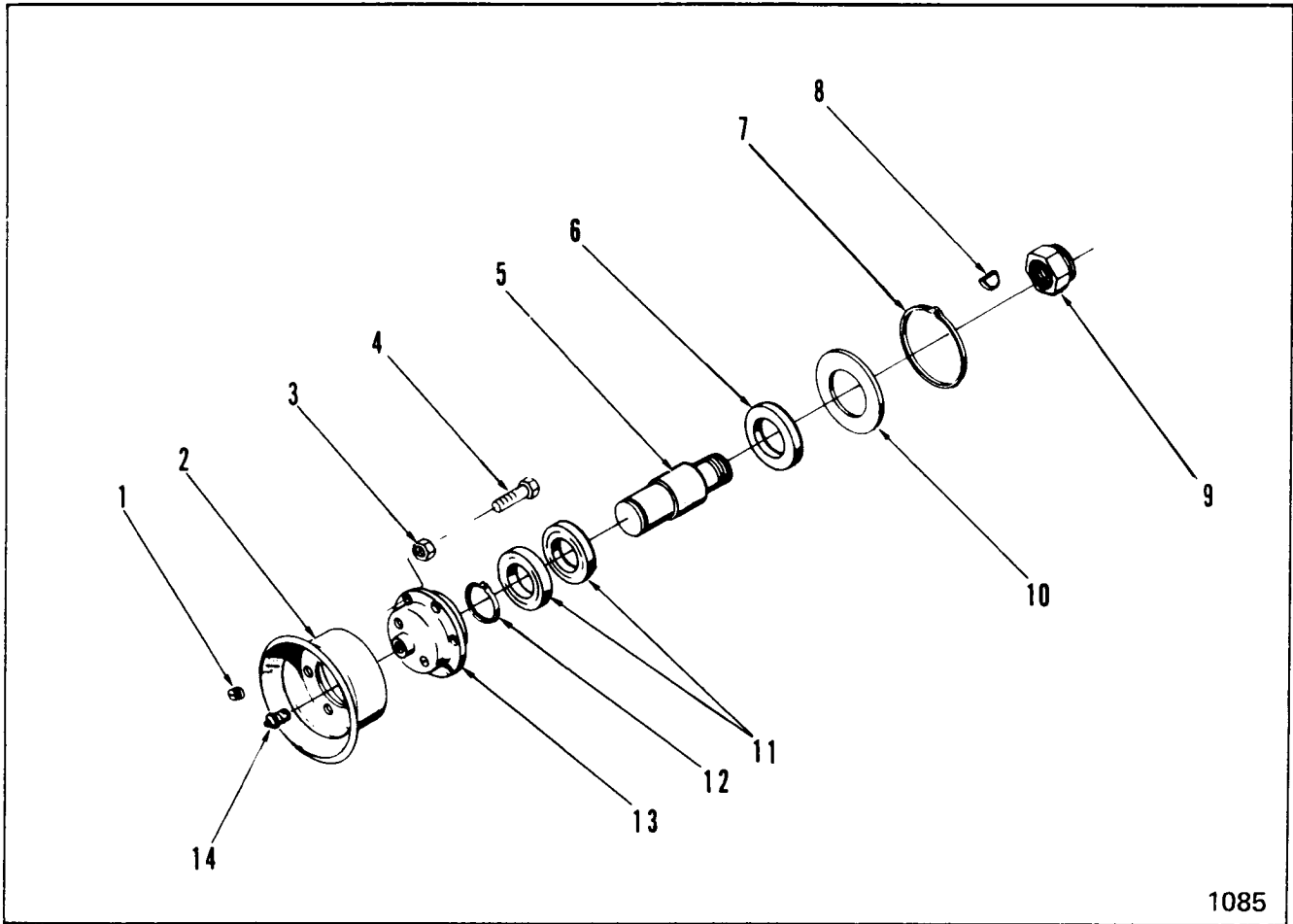
**CHAIN – ELEVATOR**

Item	Part No.	Description	Qty.
A	1574493	*ELEVATOR CHAIN SET (Inc. 1 LH Chain Assy and 1 RH chain assy.)	1
<p>*NOTE: One (1) Elevator Chain Set required per Elevator – Quantities listed below are for one (1) Elevator Chain Assy. It is strongly recommended chains be installed in sets to assure equal lengths.</p>			
1	-----	§LINK, side (See Item 10)	1
2	-----	§ROLLER, Chain (See Item 10)	2
3	-----	§BUSHING (See Item 10)	2
4	-----	§LINK, Side (See Item 10)	1

Item	Part No.	Description	Qty.
5	1574566	PIN, Link (Inc. 8)	2
6	-----	§LINK, Attachment (See Item 9)	1
7	-----	§LINK, Attachment (See Item 9)	1
8	1574569	KEY, Lock	1
9	948545	ATTACHMENT LINK ASSY (Inc. 5 thru 8)	18
10	948547	BLOCK LINK ASSY (Inc. 1, 2, 3 & 4)	36
11	1574569	KEY, Lock	1
12	948546	CONNECTING LINK ASSY (Inc. 13, 14, & 15)	18
13	-----	§LINK, Connecting (See Item 12)	1
14	-----	§LINK, Connecting (See Item 12)	1
15	1574566	PIN, Link (Inc. 11)	2

§ Not Sold Separately

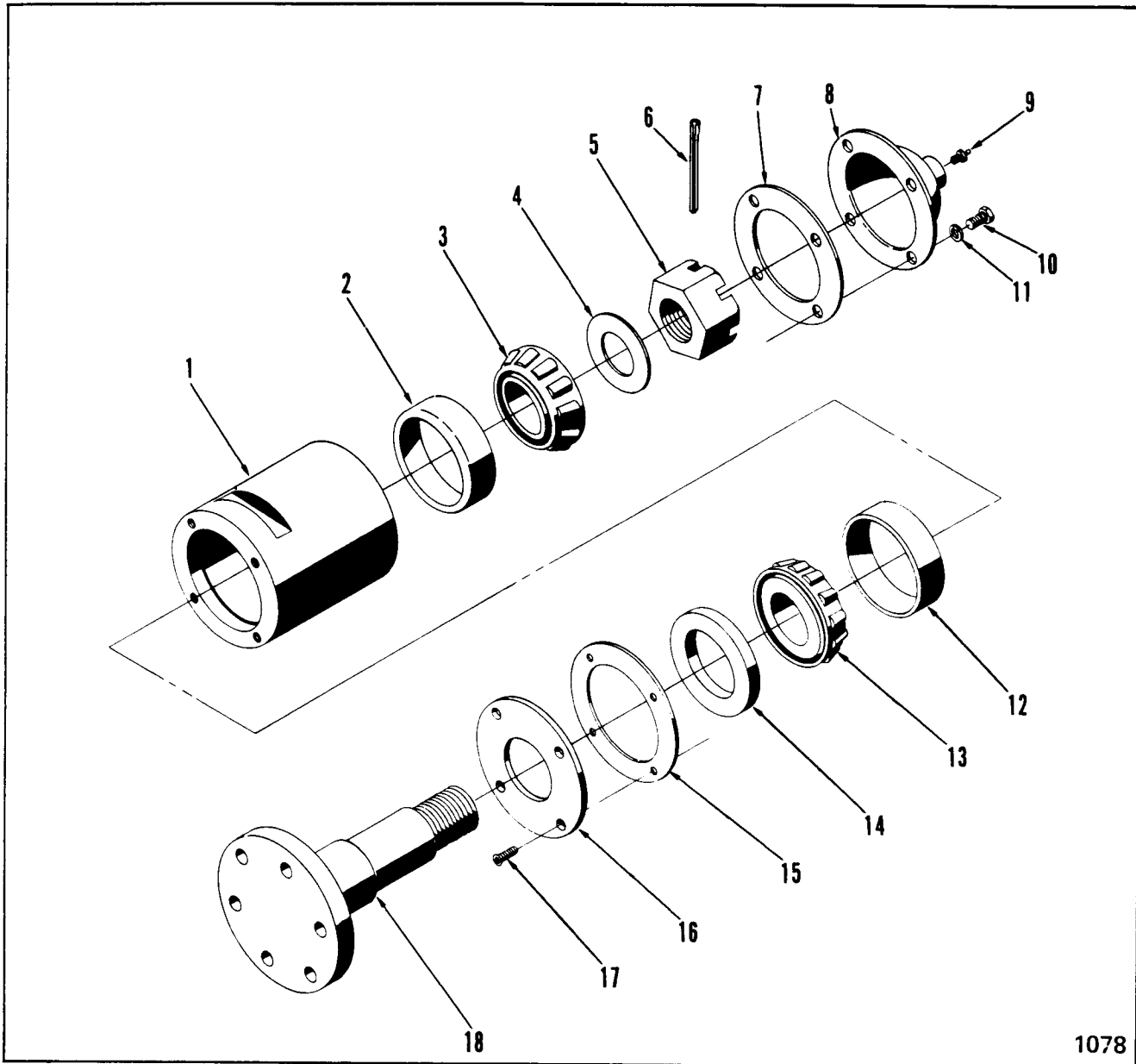
**WHEN ORDERING PARTS, ALWAYS STATE MODEL AND SERIAL NO. OF MACHINE**



**ROLLER-CHAIN IDLER**

Item	Part No.	Description	Qty.
A	1560532	*ASSY, Chain Idler Roller	4
*NOTE: Four (4) chain idler roller assemblies required per elevator—quantities listed below are for one (1) chain idler roller assembly.			
1	15F-01	PLUG, Pipe	2
2	1560537	ROLLER	1
3	59D-06	NUT	6
4	17C-624	BOLT, Roller to Hub	6
5	1560432	SHAFT, Roller	1
6	232995	SEAL	1
7	763062	RING, Cover Retaining	1
8	6J-606	KEY, Woodruff	1
9	1565086	NUT	1
10	1560438	COVER, Seal	1
11	302712	BEARING, Ball	2
12	654613	RING, Bearing Retaining	1
13	1560433	HUB, Roller	1
14	12H-15	FITTING, Grease	1

**WHEN ORDERING PARTS, ALWAYS STATE MODEL AND SERIAL NO. OF MACHINE**



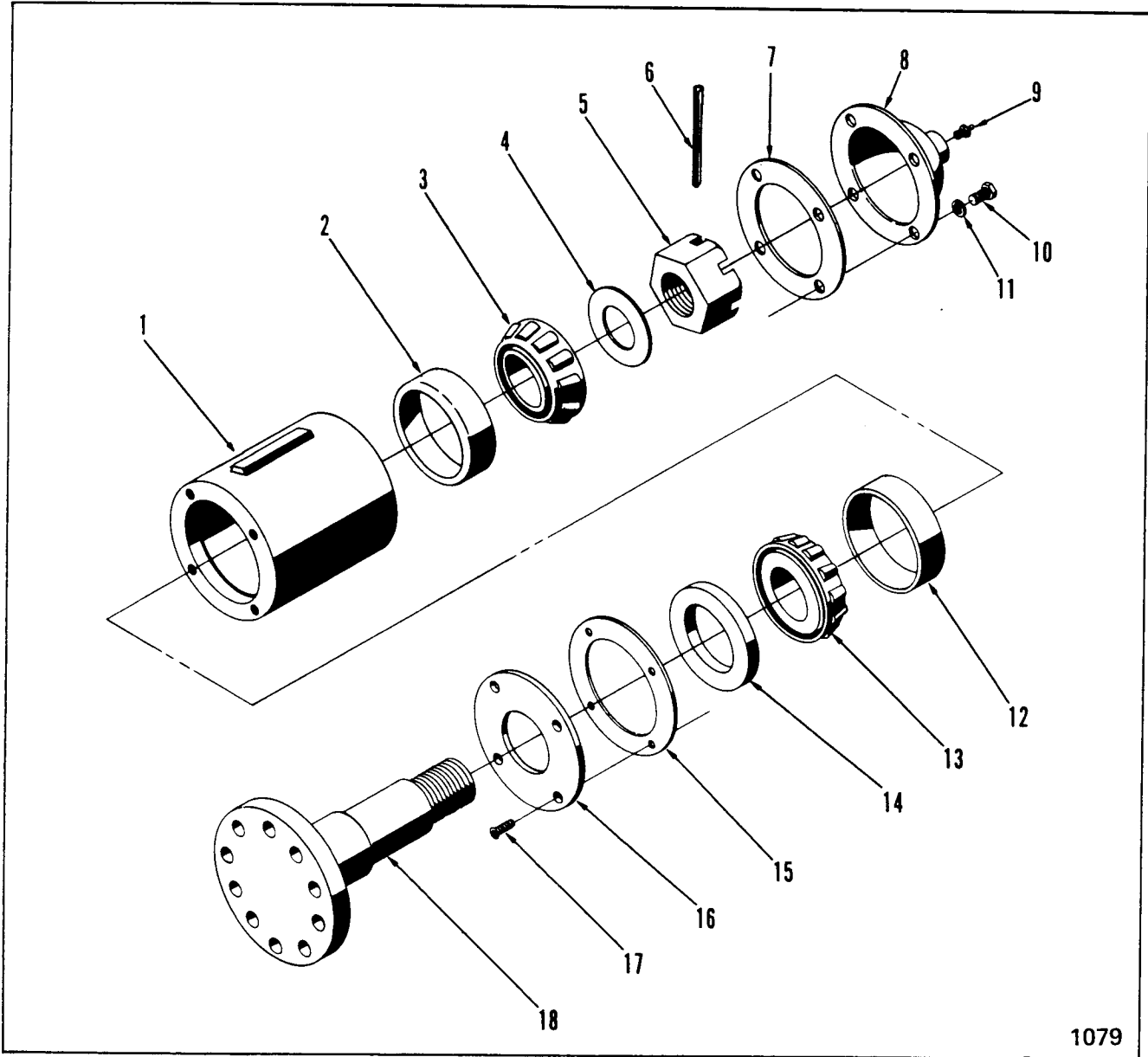
1078

**STUB SPINDLE—LOWER**

Item	Part No.	Description	Qty.
A	1561159	*ASSY., Lower Stub Spindle (Incl. 1 thru 18)	2
*NOTE: Two - (2) stub spindles required per elevator—quantities listed below are for one (1) stub spindle.			
1	1561158	HUB, Spindle	1
2	742240	CUP, Bearing	1
3	742242	CONE, Bearing	1
4	1550754	WASHER, Bearing	1
5	1566120	NUT, Castle	1
6	1F-848	COTTER, Spindle Shaft	1

Item	Part No.	Description	Qty.
7	1560005	GASKET, Dust Cap	1
8	1560423	CAP, Dust	1
9	12H-15	FITTING, Grease	1
10	17C-712	BOLT - Cap to Hub	4
11	4E-07	LKWSHR	4
12	742240	CUP, Bearing	1
13	742242	CONE, Bearing	1
14	1550990	SEAL	1
15	1560419	GASKET, Seal Cover	1
16	1560418	COVER, Seal	1
17	95G-41	BOLT, Socket Head	4
18	1560417	SHAFT, Spindle	1

**WHEN ORDERING PARTS, ALWAYS STATE MODEL AND SERIAL NO. OF MACHINE**



1079

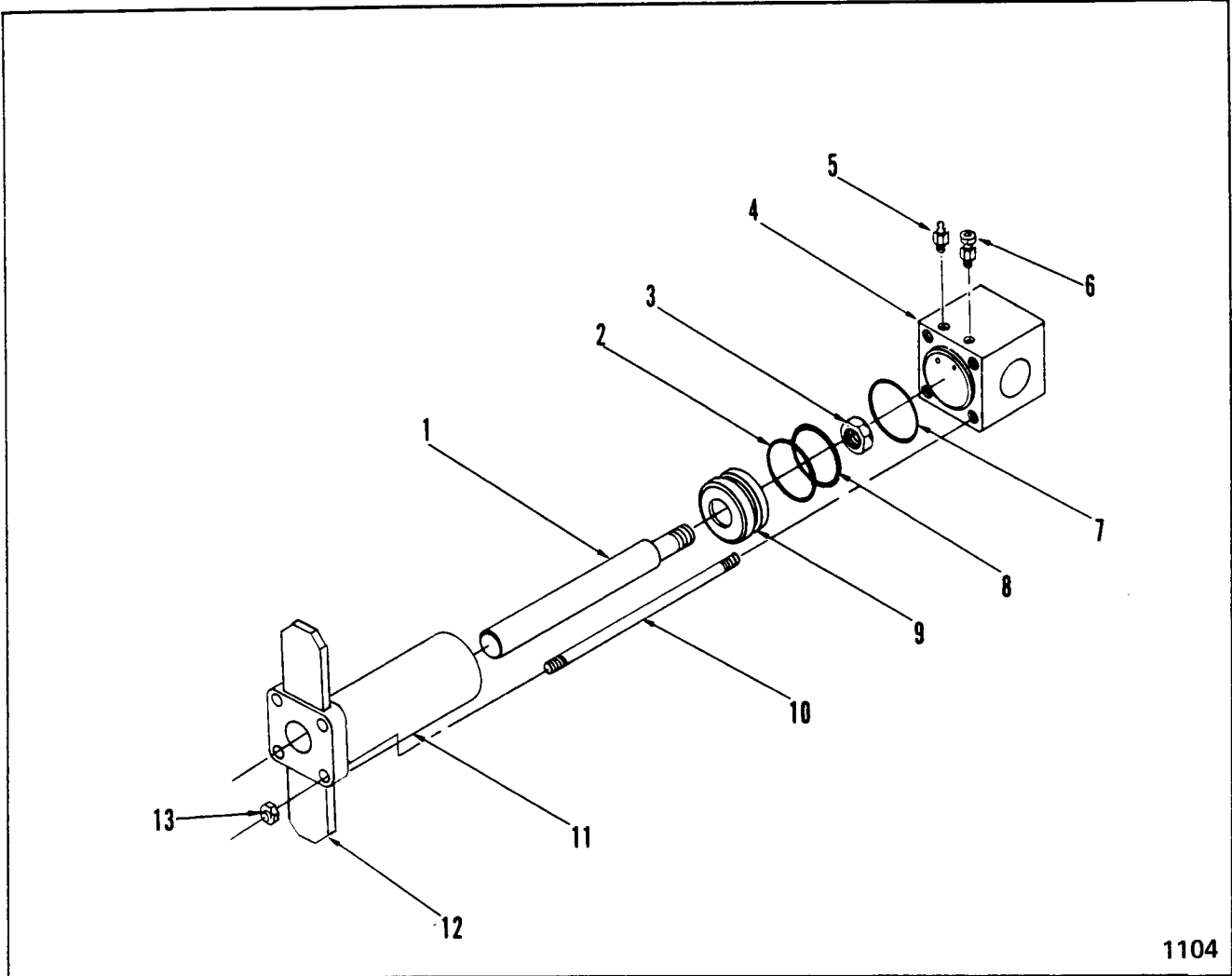
**STUB SPINDLE—UPPER**

Item	Part No.	Description	Qty.
A	1560426	ASSY., Upper Stub Spindle (Incl. 1 thru 18)	1
1	1560420	HUB, Spindle	1
2	742240	CUP, Bearing	1
3	742242	CONE, Bearing	1
4	1550754	WASHER, Bearing	1
5	1566120	NUT, Castle	1
6	1F-848	COTTER, Spindle Shaft	1
7	1560005	GASKET, Dust Cap	1
8	1560423	CAP, Dust	1

Item	Part No.	Description	Qty.
9	12H-15	FITTING, Grease	1
10	17C-712	BOLT-Cap to Hub	4
11	4E-07	LKWSHR	4
12	742240	CUP, Bearing	1
13	742242	CONE, Bearing	1
14	1550990	SEAL	1
15	1560419	GASKET, Seal Cover	1
16	1560418	COVER, Seal	1
17	95G-41	BOLT, Socket Head	4
18	1560735	SHAFT, Spindle	1

**WHEN ORDERING PARTS, ALWAYS STATE MODEL AND SERIAL NO. OF MACHINE**





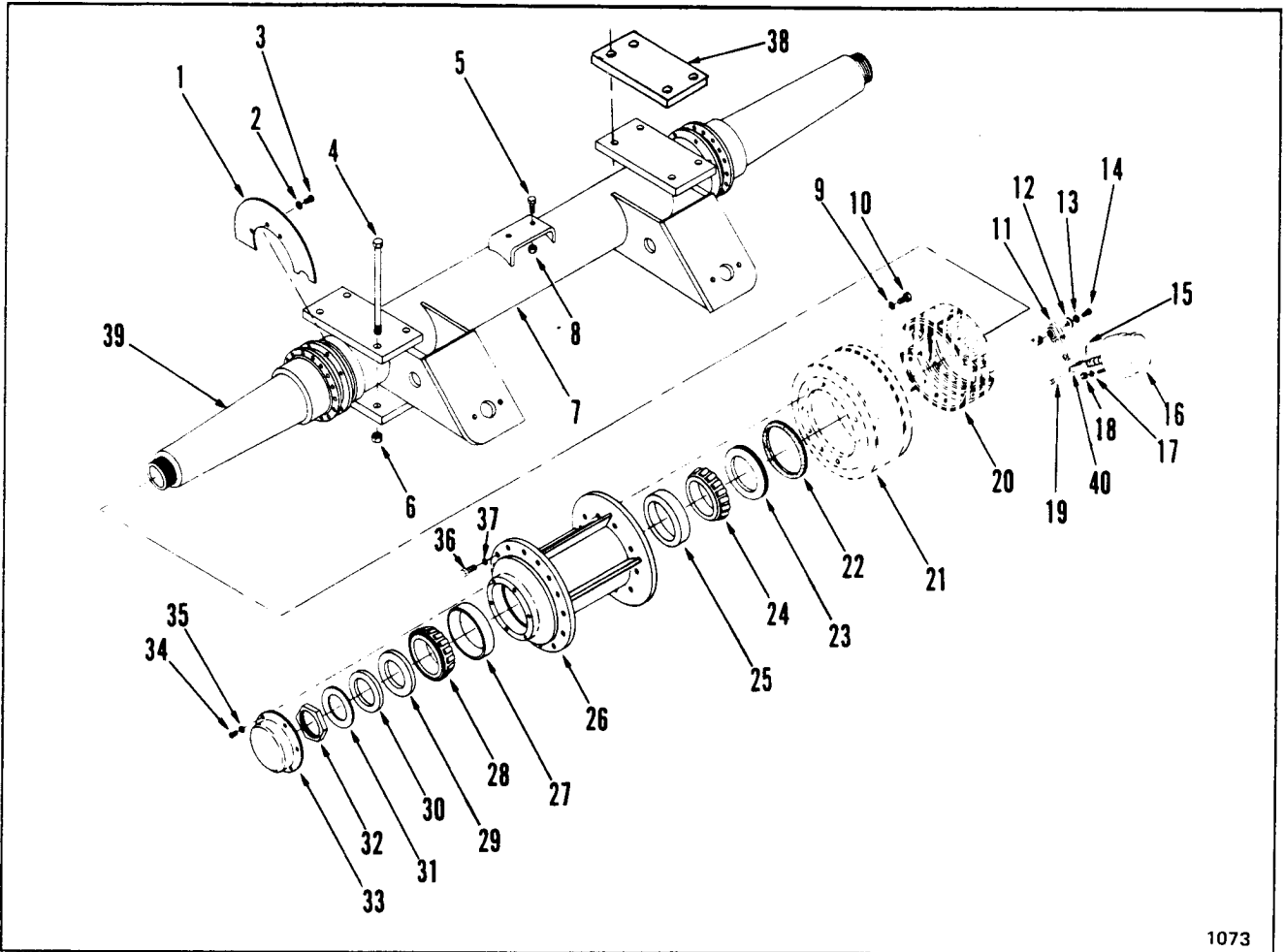
1104

**ADJUSTER-ELEVATOR CHAIN**

Item	Part No.	Description	Qty.
A	1564236	*ASSY, Elevator Chain	
		Adjuster (Incl. 1 thru 13) . . . . .	2
		*NOTE: Two (2) elevator chain adjuster assemblies required per elevator—quantities listed below are for one (1) chain adjuster assy.	
1	1561049	RAM, Adjuster . . . . .	1
2	73K-330	RING, Back-up . . . . .	1
3	66D-12	NUT . . . . .	1
4	1564233	BASE, Adjuster (For Serial 213-1050 & After) . . . . .	1
4A	1561044	BASE, Adjuster (For Serial 213-1001 thru 213-1049) . . . . .	1
5	10H-25	FITTING, Grease . . . . .	1

Item	Part No.	Description	Qty.
6	1560991	VALVE, Adjuster Relief . . . . .	1
7	25K-30216	O-RING . . . . .	1
8	25K-60204	O-RING . . . . .	1
9	1561045	PISTON, Adjuster . . . . .	1
10	1561048	ROD . . . . .	4
11	1564926	BARREL, Adjuster Cylinder (For Serial 213-1050 & After Inc 12 . . . . .	1
11A	1561046	BARREL, Adjuster Cylinder (For Serial 213-1001 thru 213-1049) . . . . .	1
12	1561047	CAP, Adjuster End (For Serial 213-1001 thru 213-1049) . . . . .	1
13	59D-04	NUT . . . . .	4

**WHEN ORDERING PARTS, ALWAYS STATE MODEL AND SERIAL NO. OF MACHINE**



1073

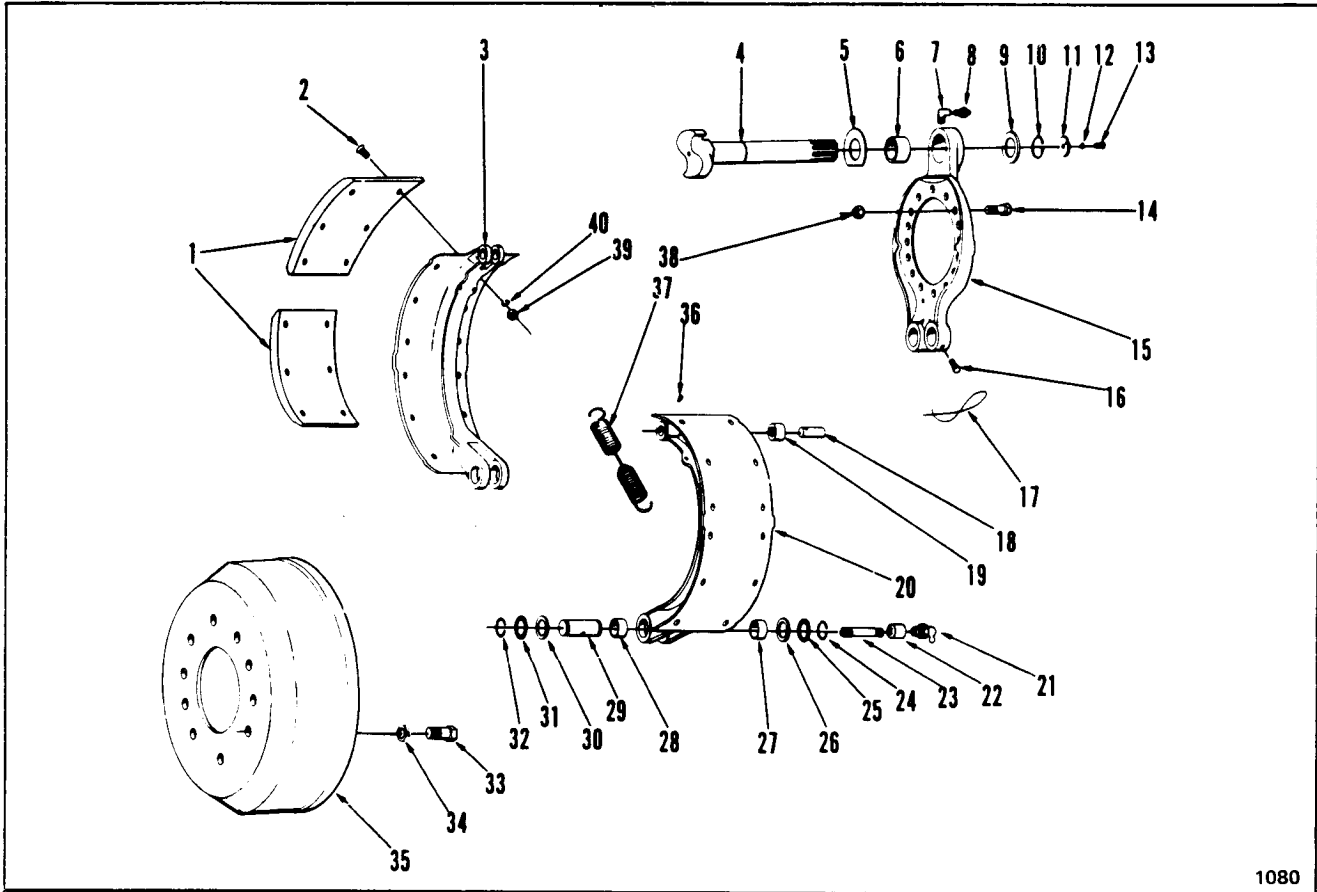
**AXLE – SCRAPER REAR**

Item	Part No.	Description	Qty.
1	1559552	SHIELD, Dust	4
2	4E-08	LKWSHR	12
3	17C-812	BOLT, Shield to Axle	12
4	18C-2024	BOLT, Axle to Scraper Frame	8
5	17C-1236	BOLT, Stabilizer Track to Axle	2
6	60D-20	NUT	8
7	1559564	AXLE, Scraper	1
8	59D-12	NUT	2
9	4E-12	LKWSHR	20
10	17C-1224	BOLT, Brake Drum to Hub	20
11	1550841	*ADJUSTER, Brake Slack – B. W. No. 278794	2
12	---	OMIT	—
13	4E-05	LKWSHR	2
14	17C-512	BOLT, Washer to Brake Cam	2
15	1F-520	COTTER, Clevis Pin	2
16	1550903	ASSY, Roto Chamber – B. W. No. 279942	2
16A	876533	†*DIAPHRAGM, Roto Chamber – B. W. No. 231491	2
17	4E-12	LKWSHR	4
18	61D-12	NUT	4

Item	Part No.	Description	Qty.
19	876550	PIN, Yoke	2
20	---	BRAKE ASSY – See Index	—
21	---	DRUM Brake – See Index	—
22	1559569	**SEAL, Felt	2
23	1559567	**RETAINER, Felt Seal	2
24	1308639	CONE, Bearing	2
25	1308638	CUP, Bearing	2
26	1562778	HUB, Axle	2
27	711153	CUP, Bearing	2
28	711154	CONE, Bearing	2
29	1559546	WASHER	2
30	1550973	NUT, Spindle	2
31	1550842	WASHER, Spindle	2
32	1550974	NUT, Spindle Lock	2
33	1559545	CAP, Dust	2
34	17C-516	BOLT, Cap to Hub	12
35	4E-05	LKWSHR	12
36	18C-1432	BOLT, Wheel to Hub	32
37	4E-14	LKWSHR	32
38	1570922	SHIM	AR
39	1559565	STUB, Axle	2
40	1580643	YOKE	2

\* NOTE: Your Bendix-Westinghouse distributor is equipped to service components of these parts.  
 \*\* NOTE: 1559568 Seal Assy includes 22 & 23  
 † Not Illustrated

**WHEN ORDERING PARTS, ALWAYS STATE MODEL AND SERIAL NO. OF MACHINE**



1080

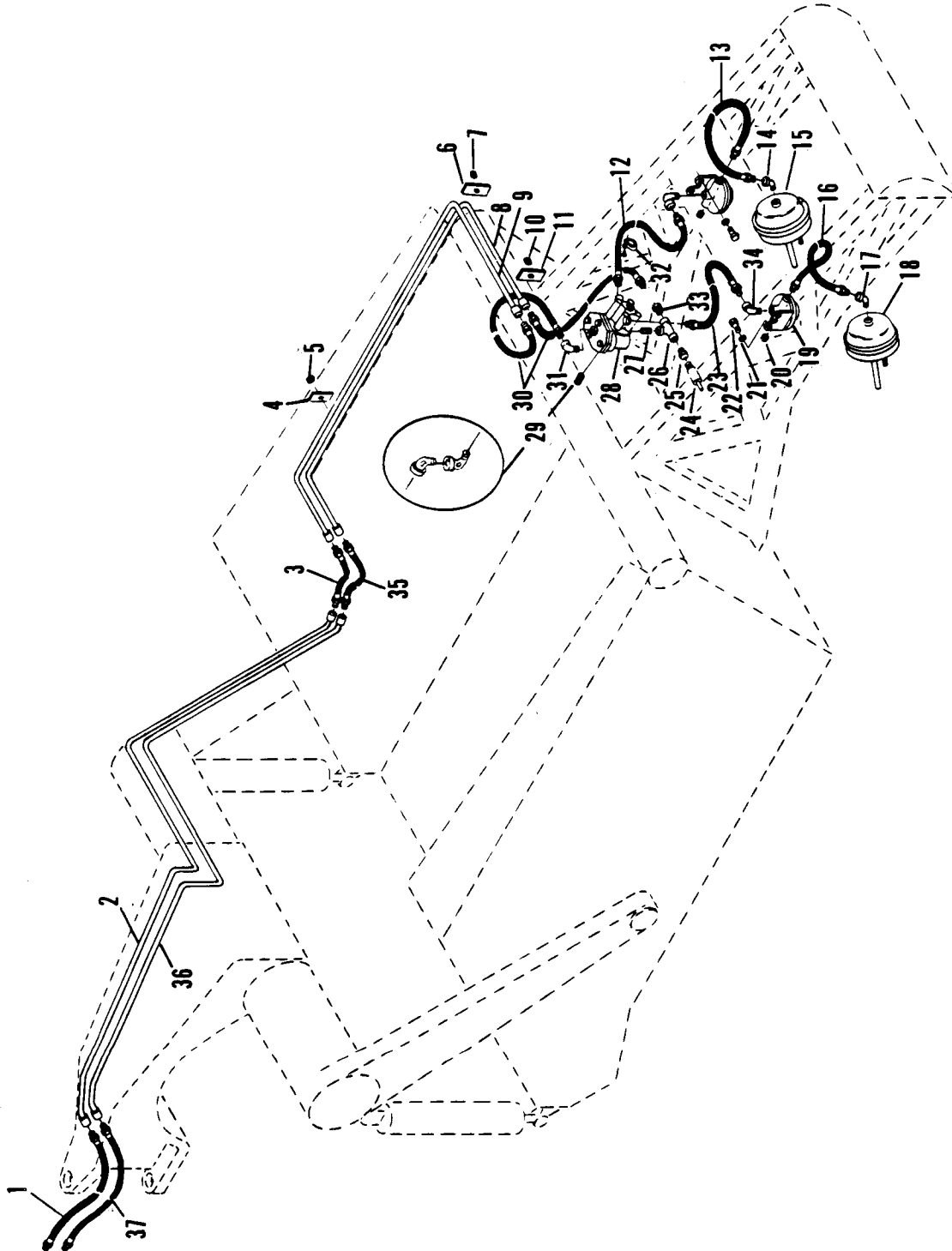
**BRAKE AND DRUM – SCRAPER**

Item	Part No.	Description	Qty.
A	1551021	*ASSY, RH Scraper Brake (Inc. 1 thru 32 & 36 thru 40)	1
B	1551020	†*ASSY, LH Scraper Brake (Inc. 1 thru 32 & 36 thru 40)	1
*NOTE: Two (2) brake assy (1 LH & 1 RH) are required per machine – quantities listed below are for one (1) brake assy.			
1	1551578	LINING, Brake	4
1A	1580816	LINING, Brake – 1/16" oversize (Set of 8)	1
1B	1580817	LINING, Brake – 1/8" oversize (Set of 8)	1
1C	1580818	LINING, Brake – 3/16" oversize (Set of 8)	1
2	1551772	BOLT, Lining to Shoe	24
3	1551806	SHOE, Brake	1
4	1566452	†SHAFT, RH Brake Cam	1
4A	1566451	SHAFT, LH Brake Cam	1
5	1566454	WASHER, Spacer	1
6	1551577	BUSHING, Spider	1
7	672202	ADAPTER, Fitting	1
8	10H-25	FITTING, Straight Grease	1
9	713841	WASHER, Retaining	1
10	1566459	RING, Retaining	1
11	1566456	WASHER, Retaining	1

Item	Part No.	Description	Qty.
12	4E-05	LKWSHR	1
13	17C-512	BOLT, Washer to Cam Shaft	1
14	1566284	BOLT, Spider to Axle	16
15	1551576	SPIDER, Brake	1
16	3C-610	BOLT	2
17	28H-16120	WIRE, Safety	1
18	1551582	PIN	2
19	1551581	ROLLER, Shoe	2
20	1551806	SHOE, Brake	2
21	12H-15	FITTING, 90° Grease	1
22	75F-02	COUPLING	1
23	5K-124	NIPPLE	1
24	1566455	RING, Retaining	2
25	1566458	WASHER, Retaining	2
26	1566457	SEAL, Felt	2
27	1551579	BUSHING, Brake Shoe	2
28	1551579	BUSHING, Brake Shoe	2
29	1551583	PIN, Anchor	2
30	1566457	SEAL, Felt	2
31	1566458	WASHER, Retaining	2
32	1566455	RING, Retaining	2
33	17C-1224	BOLT	10
34	4E-12	LKWSHR	10
35	1550970	DRUM, Scraper Brake	2
36	35G-1003	SCREW, Set	2
37	1551580	SPRING, Shoe Retract	1
38	86D-08	NUT	16
39	62D-07	NUT	24
40	4E-07	LKWSHR	24

† Not Illustrated

WHEN ORDERING PARTS, ALWAYS STATE MODEL AND SERIAL NO. OF MACHINE



AIR SYSTEM — SCRAPER BRAKE  
FOR SERIAL: 213-1001 THRU 213-1035

**AIR SYSTEM—SCRAPER**  
For Serial: 213-1001 Thru 213-1035

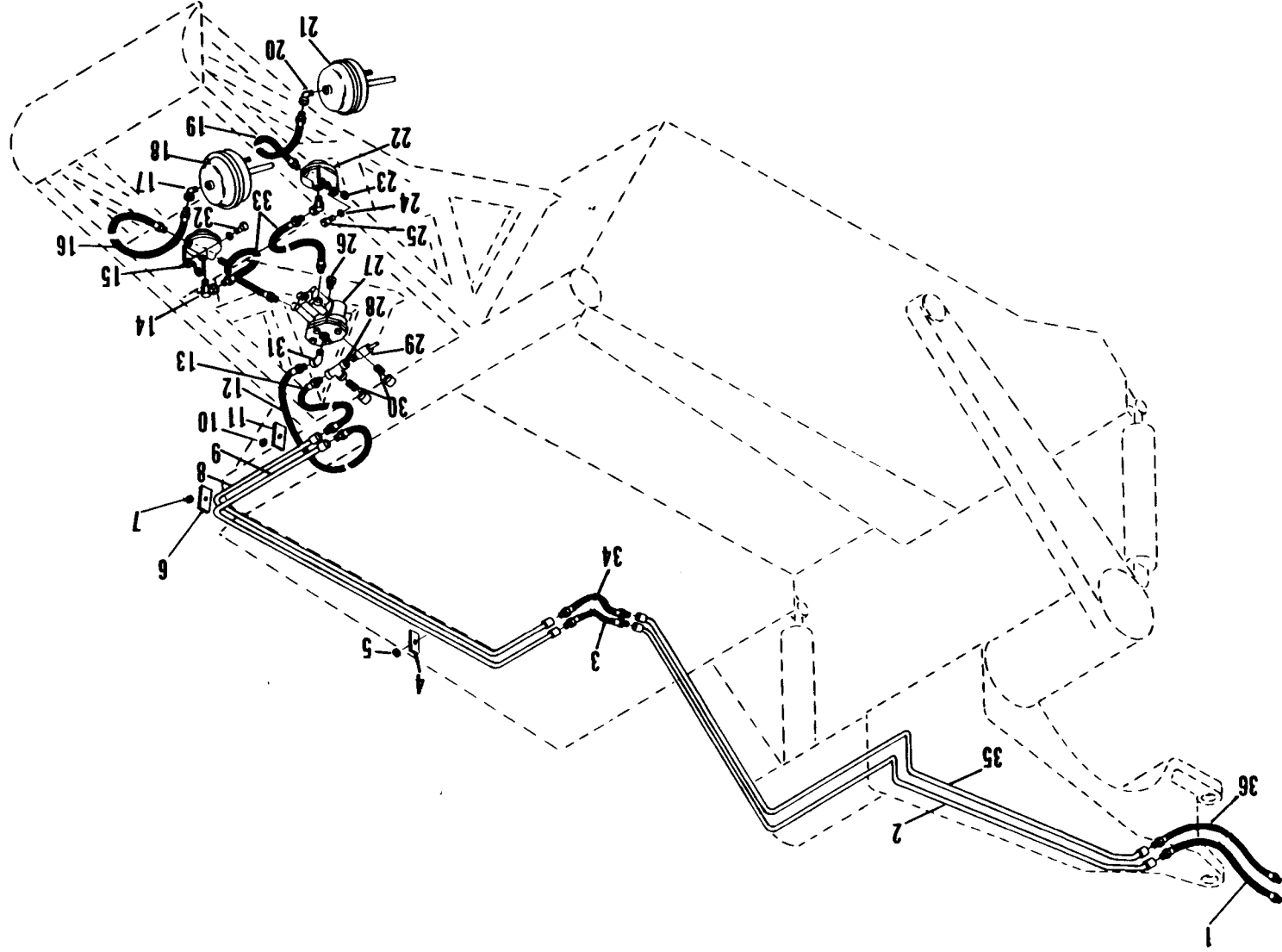
Item	Part No.	Description	Qty.
1	1550860	HOSE, 3/8 x 68	1
2	1557894	PIPE, Air	1
3	1562872	HOSE, 3/8 x 32	1
4	1557908	CLAMP, Pipe Mounting	1
5	17D-03	NUT	1
6	1557908	CLAMP, Pipe Mounting	1
7	17D-03	NUT	1
8	1557901	PIPE, Air	1
9	1557900	PIPE, Air	1
10	17D-03	NUT	1
11	1557908	CLAMP, Pipe Mounting	1
12	1550861	HOSE, 3/8 x 71	1
13	1567160	HOSE, 3/8 x 23	1
14	26F-02	ELBOW, Street	1
15	1550903	*ASSY, Roto Chamber—B. W. No. 279942	1
15A	876533	†DIAPHRAGM, Roto Chamber—B. W. No. 231491	1
16	1567160	HOSE, 3/8 x 23	1
17	26F-02	ELBOW, Street	1
18	1550903	*ASSY, Roto Chamber—B. W. No. 279942	1
18A	876533	†DIAPHRAGM, Roto Chamber—B. W. No. 231491	1
19	1010658	*VALVE, Quick Release—B. W. No. 205000	2
20	13F-04	PLUG; Pipe	2
21	4E-05	LKWSHR	4
22	17C-512	BOLT, Valve to Frame	4
23	1550861	HOSE, 3/8 x 71	1
24	427101	VALVE, Relief	1
25	26F-01	BUSHING	1
26	28K-208	TEE	1
27	5K-308	NIPPLE	1
28	515125	*VALVE, Relay—B. W. No. 227356	1
29	661840	ELBOW, Street—For Serial: 213-1001 Thru 213-1002	2
30	1567159	HOSE, 3/8 x 12	2
31	26F-02	ELBOW, Street	1
32	1550530	CLIP, Hose	6
33	26F-01	BUSHING	1
34	26F-02	ELBOW, Street	1
35	1562872	HOSE, 3/8 x 32	1
36	1557896	PIPE, Air	1
37	1550860	HOSE, 3/8 x 68	1

\*NOTE: Your Bendix—Westing House Distributor is equipped to service components of these parts.  
†Not Illustrated

**WHEN ORDERING PARTS, ALWAYS STATE MODEL AND SERIAL NO. OF MACHINE**

1208

**AIR SYSTEM - SCRAPER BRAKE**  
For Serial: 213-1036 thru 213-1198





CONSTRUCTION MACHINERY DIVISION



AIR SYSTEM—SCRAPER BRAKE  
For Serial: 213-1036 thru 213-1198

Item	Part No.	Description	Qty.
1	1550860	HOSE, 3/8 x 68	1
2	1557894	PIPE, Air	1
3	1562872	HOSE, 3/8 x 32	1
4	1557908	CLAMP, Pipe Mounting	1
5	17D-03	NUT	1
6	1557908	CLAMP, Pipe Mounting	1
7	17D-03	NUT	1
8	1557900	PIPE, Air	1
9	1557901	PIPE, Air	1
10	17D-03	NUT	1
11	1557908	CLAMP, Pipe Mounting	1
12	1550862	HOSE, 3/8 x 12	1
13	1551391	HOSE, 3/8 x 10	1
14	31F-03	ADAPTER, 90°	2
15	507816	*VALVE, Quick Release—B.W. No. 205000	1
16	1567160	HOSE, 3/8 x 23	1
17	26F-03	ELBOW, Street	1
18	1550903	*ASSY, Roto Chamber—B.W. No. 279942	1
18A	876533	†*DIAPHRAGM, Roto Chamber—B.W. No. 231491	1
19	1550867	HOSE, 3/8 x 23	1
20	26F-03	ELBOW, Street	1
21	1550903	*ASSY, Roto Chamber—B.W. No. 279942	1
21A	876533	†*DIAPHRAGM, Roto Chamber—B.W. No. 231491	1
22	1010658	*VALVE, Quick Release—B.W. No. 205000	1
23	13F-04	PLUG, Pipe	2
24	4E-05	LKWSHR	4
25	17C-512	BOLT, Valve to Frame	2
26	40K-04	PLUG, Pipe	1
27	515125	*VALVE, Relay—B.W. No. 227356	1
28	18F-03	TEE	1
29	427101	VALVE, Relief	1
30	5K-308	NIPPLE, Close	2
31	26F-02	ELBOW, Street	1
32	17C-512	BOLT, Valve to Frame	2
33	1550861	HOSE, 3/8 x 71	2
34	1562872	HOSE, 3/8 x 32	1
35	1557896	PIPE, Air	1
36	1550860	HOSE, 3/8 x 68	1

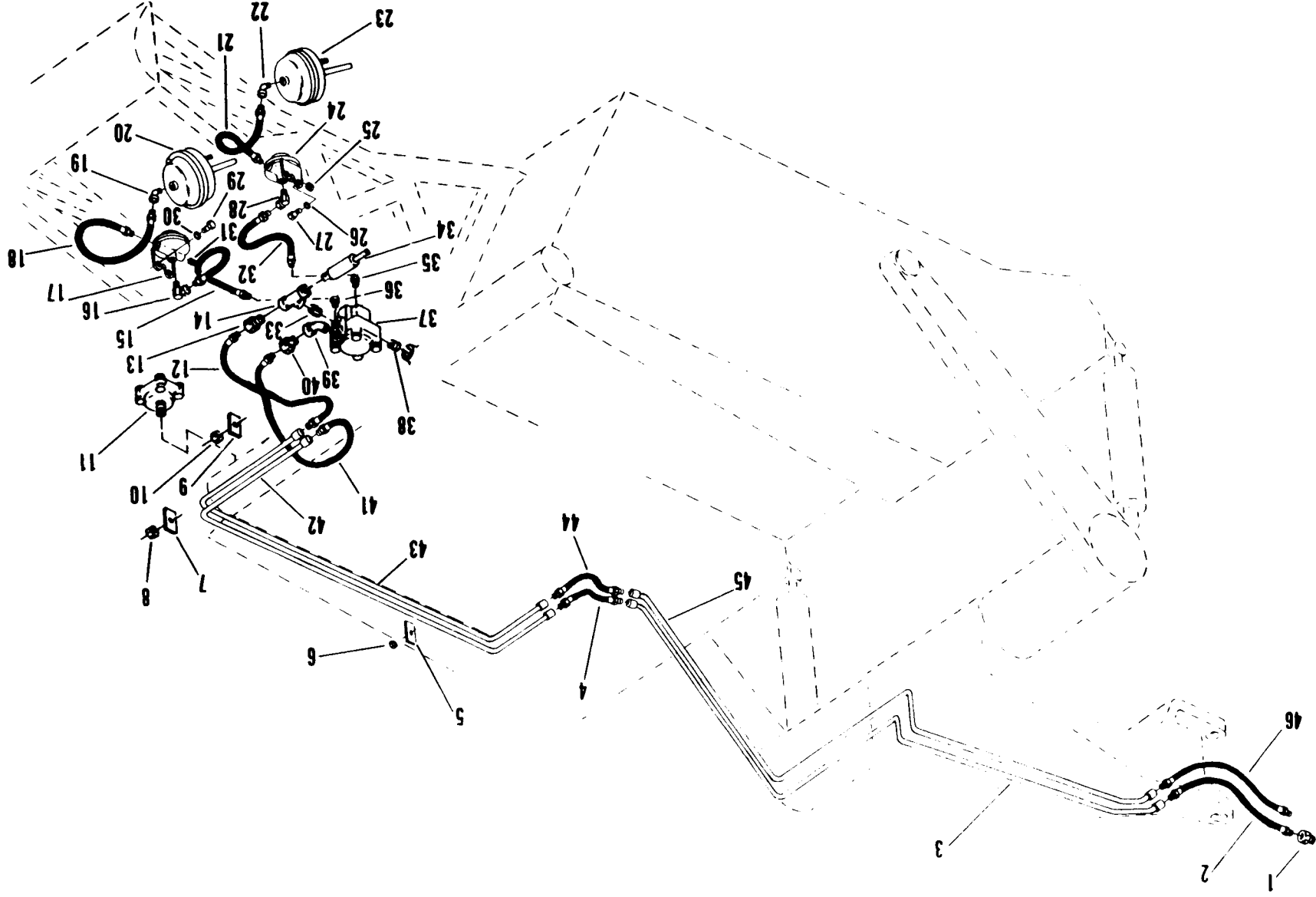
\*NOTE: Your Bendix-Westinghouse distributor is equipped to service components of these parts.

†Not Illustrated

WHEN ORDERING PARTS, ALWAYS STATE MODEL AND SERIAL NO. OF MACHINE

1208A

AIR SYSTEM - SCRAPER BRAKE  
FOR SERIAL: 213-1199 THRU 213-1217





**AIR SYSTEM—SCRAPER BRAKE**

For Serial: 213-1199 thru 213-1217

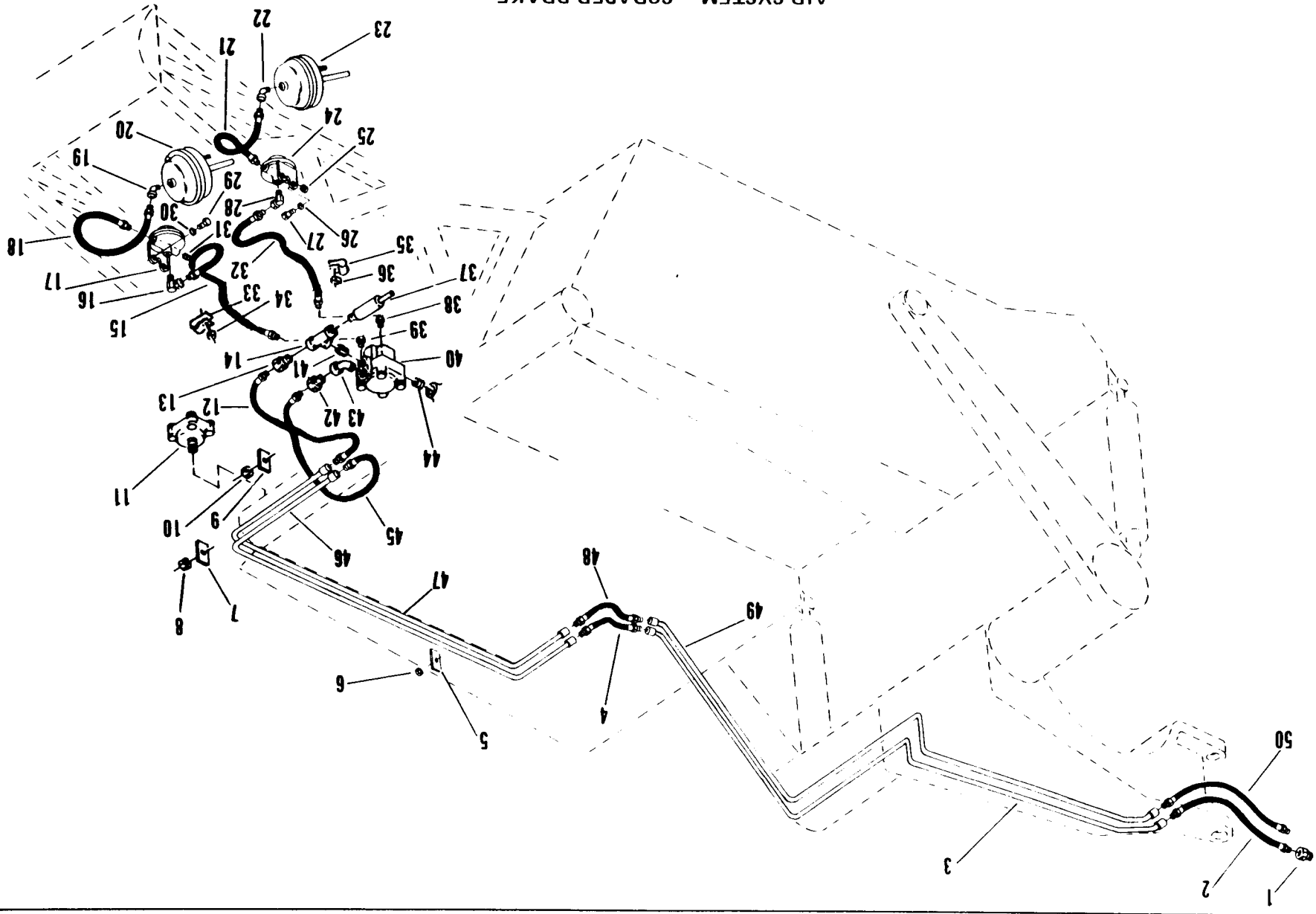
Item	Part No.	Description	Qty.
1	36F-5	ADAPTER . . . . .	2
2	1550860	HOSE, 3/8 x 68 . . . . .	1
3	1557894	TUBE . . . . .	1
4	1562872	HOSE, 3/8 x 32 . . . . .	1
5	1557908	CLAMP . . . . .	1
6	17D-03	NUT . . . . .	1
7	1557908	CLAMP . . . . .	1
8	17D-03	NUT . . . . .	1
9	1557908	CLAMP . . . . .	1
10	17D-03	NUT . . . . .	1
11	1505580	VALVE, Drain . . . . .	1
12	592741	HOSE, 3/8 x 14½ . . . . .	1
13	711186	ADAPTER . . . . .	1
14	18F-02	TEE . . . . .	1
15	1550861	HOSE, 3/8 x 71 . . . . .	1
16	31F-03	ADAPTER . . . . .	1
17	507816	*VALVE, Quick Release—B.W. No. 205000 . . . . .	1
18	1567160	HOSE, 3/8 x 23 . . . . .	1
19	26F-03	ELBOW . . . . .	1
20	1550903	*ASSY, Roto Chamber—B.W. No. 279942 . . . . .	1
20A	876533	†DIAPHRAGM, Roto Chamber—B.W. No. 231491 . . . . .	1
21	1567160	HOSE . . . . .	1
22	26F-03	ELBOW . . . . .	1
23	1550903	*ASSY, Roto Chamber—B.W. No. 279942 . . . . .	1
23A	876533	†DIAPHRAGM, Roto Chamber—B.W. No. 231491 . . . . .	1
24	1010658	*VALVE, Quick Release—B.W. No. 205000 . . . . .	1
25	13F-04	PLUG . . . . .	2
26	4E-05	LKWSHR . . . . .	2
27	17C-512	BOLT . . . . .	2
28	31F-03	ADAPTER . . . . .	1
29	17C-512	BOLT . . . . .	2
30	4E-05	LKWSHR . . . . .	2
31	13F-04	PLUG . . . . .	1
32	1550861	HOSE, 3/8 x 71 . . . . .	1
33	5K-208	NIPPLE . . . . .	1
34	427101	VALVE, Relief . . . . .	1
35	711186	ADAPTER . . . . .	1
36	711186	ADAPTER . . . . .	1
37	1012818	VALVE, Relay . . . . .	1
38	5K-611	NIPPLE . . . . .	1
39	26F-02	ELBOW . . . . .	1
40	711186	ADAPTER . . . . .	1
41	592741	HOSE, 3/8 x 14½ . . . . .	1
42	1557901	TUBE . . . . .	1
43	1557900	TUBE . . . . .	1
44	1562872	HOSE, 3/8 x 32 . . . . .	1
45	1557896	TUBE . . . . .	1
46	1550860	HOSE, 3/8 x 68 . . . . .	1

\*NOTE: Your Bendix-Westinghouse distributor is equipped to service components of these parts.

†Not Illustrated

**WHEN ORDERING PARTS, ALWAYS STATE MODEL AND SERIAL NO. OF MACHINE**

1828



AIR SYSTEM - SCRAPER BRAKE  
FOR SERIAL: 213-1218 AND AFTER

**AIR SYSTEM – SCRAPER BRAKE**

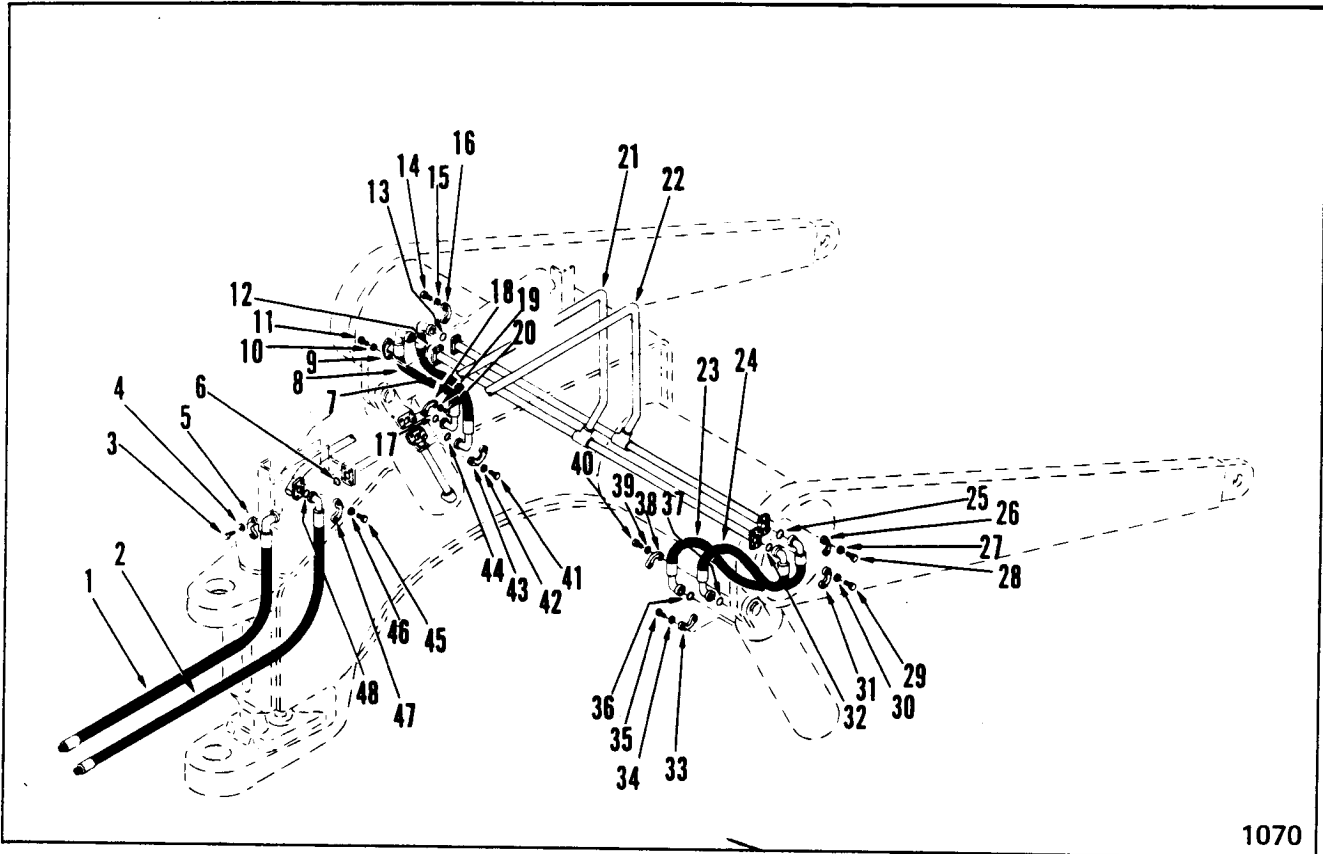
For Serial: 213-1218 & After

Item	Part No.	Description	Qty.
1	36F-5	ADAPTER .....	2
2	1550860	HOSE, 3/8" x 68" .....	1
3	1557894	TUBE .....	1
4	1582968	HOSE, 3/8" x 32" .....	1
4A	36F-3	†ADAPTER .....	1
5	1557908	CLAMP .....	1
6	65D-06	NUT .....	1
7	1557908	CLAMP .....	1
8	65D-06	NUT .....	1
9	1557908	CLAMP .....	1
10	65D-06	NUT .....	1
11	1505580	VALVE, Drain .....	1
12	592741	HOSE, 3/8" x 14 1/2" .....	1
13	711186	ADAPTER .....	1
14	18F-02	TEE .....	1
15	1582967	HOSE, 3/8" x 71" .....	1
16	31F-03	ADAPTER .....	1
17	507816	*VALVE, Quick Release (B.W. No. 205000) .....	1
18	1567160	HOSE, 3/8" x 23" .....	1
19	26F-03	ELBOW .....	1
20	1550903	*ASSY, Roto Chamber (B. W. No. 279942) .....	1
20A	876533	†DIAPHRAGM, Roto Chamber (B.W. No. 231491) .....	1
21	1567160	HOSE .....	1
22	26F-03	ELBOW .....	1
23	1550903	*ASSY, Roto Chamber (B.W. No. 279942) .....	1
23A	876533	†DIAPHRAGM, Roto Chamber (B. W. No. 231491) .....	1
24	1010658	*VALVE' Quick Release (B. W. No. 20500) .....	1
25	13F-03	PLUG .....	1
26	4E-04	LKWSHR .....	2
27	17C-512	BOLT .....	2
28	31F-03	ADAPTER .....	1
29	17C-512	BOLT .....	2
30	4E-04	LKWSHR .....	2
31	13F-04	PLUG .....	1
32	1582967	HOSE .....	1
33	1550530	CLIP .....	1
34	65D-04	LOCKNUT .....	1
35	1550530	CLIP .....	1
36	65D-04	LOCKNUT .....	1
37	507815	VALVE, Relief .....	1
38	711186	ADAPTER .....	1
39	711186	ADAPTER .....	1
40	1012818	VALVE, Relay .....	1
41	5K-208	NIPPLE .....	1
42	711186	ADAPTER .....	1
43	26F-02	ELBOW .....	1
44	5K-611	NIPPLE .....	1
45	592741	HOSE, 3/8" x 14 1/2" .....	1
46	1557901	TUBE .....	1
47	1557900	TUBE .....	1
48	1582968	HOSE, 3/8" x 32" .....	1
48A	36F-3	†ADAPTER .....	1
49	1557896	TUBE .....	1
50	1550860	HOSE, 3/8" x 68" .....	1

\*NOTE: Your local authorized Bendix-Westinghouse Distributor is equipped to service components of these parts.

† Not Illustrated

**WHEN ORDERING PARTS, ALWAYS STATE MODEL AND SERIAL NO. OF MACHINE**



**HYDRAULIC LINES—SCRAPER LIFT**

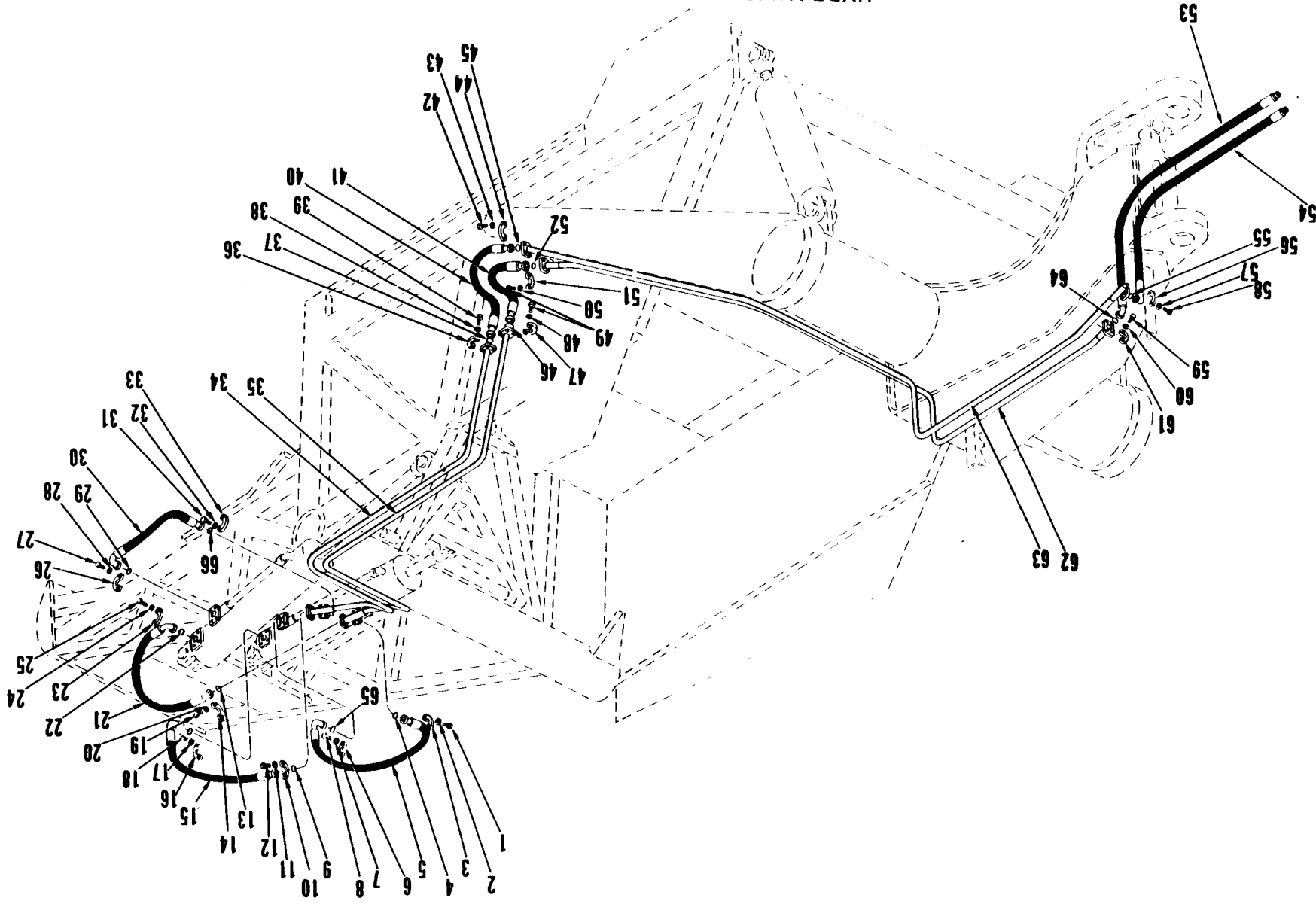
Item	Part No.	Description	Qty.
1	1583670	HOSE - Scraper to Tractor -	.1
2	1583669	HOSE - Scraper to Tractor -	.1
3	17C-620	BOLT - Flange to Tube	.4
4	4E-06	LKWSHR	.4
5	19J-12	FLANGE, Split	.2
6	58K-214	O-RING	.1
7	1562536	HOSE - Tube to Tube -	.1
8	1562536	HOSE - Tube to Cylinder	.1
9	19J-12	FLANGE, Split	.2
10	4E-06	LKWSHR	.4
11	17C-620	BOLT - Flange to Tube	.4
12	58K-214	O-RING	.1
13	58K-214	O-RING	.1
14	17C-620	BOLT - Flange to Tube	.4
15	4E-06	LKWSHR	.4
16	19J-12	FLANGE, Split	.2
17	58K-214	O-RING	.1
18	19J-12	FLANGE, Split	.2
19	4E-06	LKWSHR	.4
20	17C-620	BOLT - Flange to Cylinder	.4
21	1567563	ASSY., Tube	.1
22	1567562	ASSY., Tube	.1
23	1562536	HOSE - Tube to Tube -	.1
24	1562536	HOSE - Tube to Cylinder -	.1

Item	Part No.	Description	Qty.
25	58K-214	O-RING	.1
26	19J-12	FLANGE, Split	.2
27	4E-06	LKWSHR	.4
28	17C-620	BOLT - Flange to Tube	.4
29	17C-620	BOLT - Flange to Tube	.4
30	4E-06	LKWSHR	.4
31	19J-12	FLANGE, Split	.2
32	58K-214	O-RING	.1
33	19J-12	FLANGE, Split	.2
34	4E-06	LKWSHR	.4
35	17C-620	BOLT - Flange to Cylinder	.4
36	58K-214	O-RING	.1
37	58K-214	O-RING	.1
38	19J-12	FLANGE, Split	.2
39	4E-06	LKWSHR	.4
40	17C-620	BOLT - Flange to Tube	.4
41	17C-620	BOLT	.4
42	4E-06	LKWSHR	.4
43	19J-12	FLANGE, Split	.2
44	58K-214	O-RING	.1
45	17C-620	BOLT - Flange to Tube	.4
46	4E-06	LKWSHR	.4
47	19J-12	FLANGE, Split	.2
48	58K-214	O-RING	.1

**WHEN ORDERING PARTS, ALWAYS STATE MODEL AND SERIAL NO. OF MACHINE**

1072

HYDRAULIC LINES - SCRAPER EJECTION



HYDRAULIC LINES – SCRAPER EJECTION

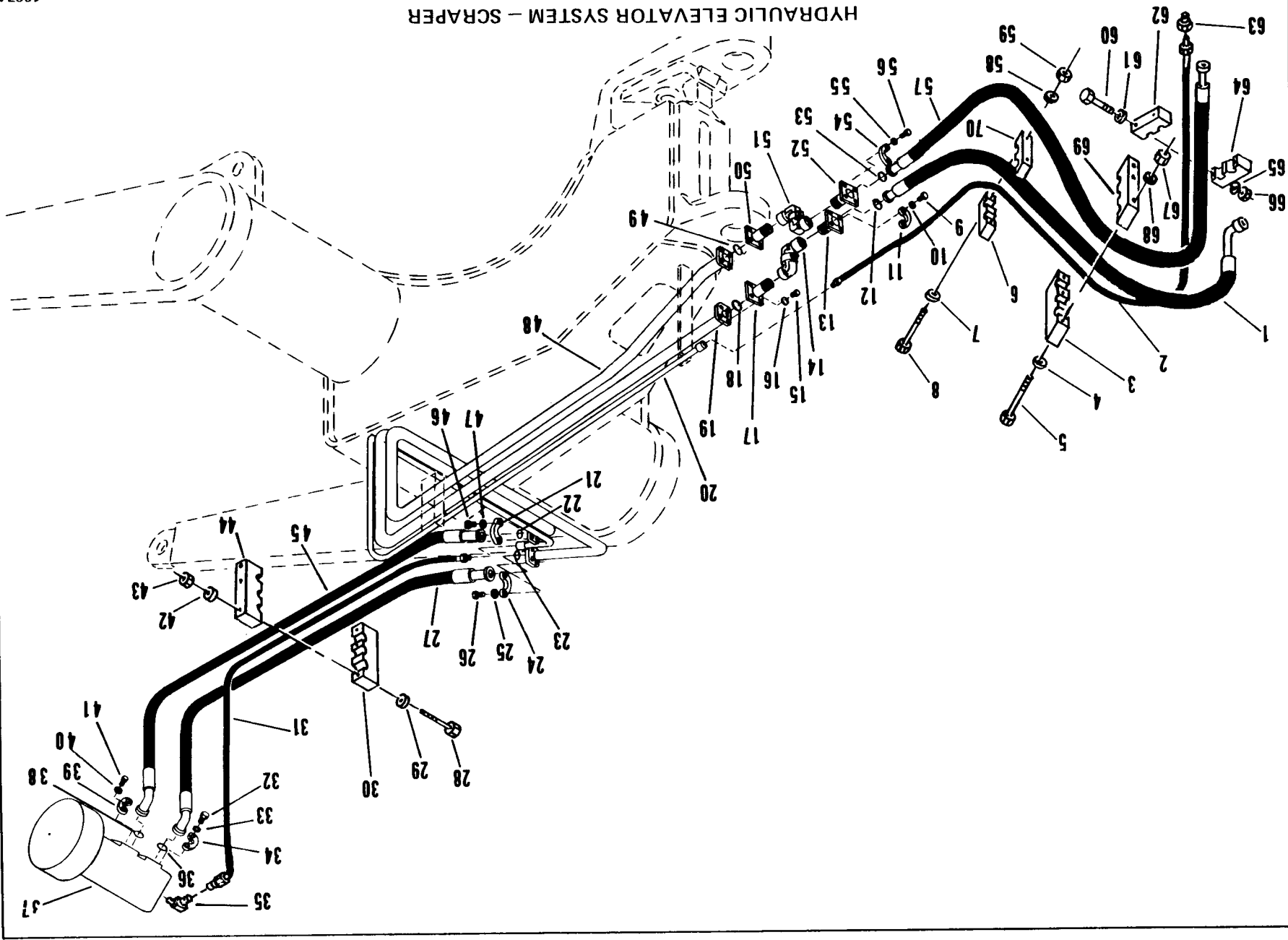
Item	Part No.	Description	Qty.
1	17C-620	BOLT - Flange to Tube .....	4
2	4E-06	LKWSHR .....	4
3	19J-12	FLANGE, Split .....	2
4	58K-214	O-RING - Hose to Tube .....	1
5	1550883	HOSE .....	1
6	19J-12	FLANGE, Split .....	2
7	4E-06	LKWSHR .....	4
8	17C-620	BOLT - Flange to Cylinder .....	4
9	58K-214	O-RING - Hose to Tube .....	1
10	19J-12	FLANGE, Split .....	2
11	4E-06	LKWSHR .....	4
12	17C-620	BOLT - Flange to Tube .....	4
13	58K-214	O-RING - Hose to Tube .....	1
14	19J-12	FLANGE, Split .....	2
15	1550883	HOSE .....	1
16	19J-12	FLANGE, Split .....	2
17	4E-06	LKWSHR .....	4
18	17C-620	BOLT - Flange to Cylinder .....	4
19	17C-620	BOLT - Flange to Tube .....	4
20	4E-06	LKWSHR .....	4
21	1550883	HOSE .....	1
22	58K-214	O-RING - Hose to Cylinder .....	1
23	19J-12	FLANGE, Split .....	2
24	4E-06	LKWSHR .....	4
25	17C-620	BOLT - Flange to Cylinder .....	4
26	19J-12	FLANGE, Split .....	2
27	17C-620	BOLT - Flange to Cylinder .....	4
28	4E-06	LKWSHR .....	4
29	58K-214	O-RING - Hose to Cylinder .....	1
30	1550883	HOSE .....	1
31	17C-620	BOLT - Flange to Tube .....	4
32	4E-06	LKWSHR .....	4
33	19J-12	FLANGE, Split .....	2

Item	Part No.	Description	Qty.
34	1557897	ASSY, Tube .....	1
35	1557892	ASSY, Tube .....	1
36	19J-12	FLANGE, Split .....	2
37	58K-214	O-RING, Hose to Tube .....	1
38	4E-06	LKWSHR .....	4
39	17C-620	BOLT - Flange to Tube .....	4
40	1550880	HOSE .....	1
41	1550880	HOSE .....	1
42	17C-620	BOLT - Flange to Tube .....	2
43	4E-06	LKWSHR .....	4
44	19J-12	FLANGE, Split .....	2
45	58K-214	O-RING - Hose to Tube .....	1
46	58K-214	O-RING - Hose to Tube .....	1
47	19J-12	FLANGE, Split .....	2
48	4E-06	LKWSHR .....	4
49	17C-620	BOLT - Flange to Tube .....	8
50	4E-06	LKWSHR .....	4
51	19J-12	FLANGE, Split .....	2
52	58K-214	O-RING - Hose to Tube .....	1
53	1583669	HOSE - Scraper to Tractor .....	1
54	1583669	HOSE - Scraper to Tractor.....	1
55	58K-214	O-RING - Tube to Hose .....	1
56	19J-12	FLANGE, Split .....	2
57	4E-06	LKWSHR .....	4
58	17C-620	BOLT - Flange to Tube .....	4
59	17C-620	BOLT - Flange to Tube .....	4
60	4E-06	LKWSHR .....	4
61	19J-12	FLANGE, Split .....	2
62	1557881	ASSY, Tube .....	1
63	1557879	ASSY, Tube .....	1
64	58K-214	O-RING - Hose to Tube .....	1
65	58K-214	O-RING - Hose to Cylinder .....	1
66	58K-214	O-RING - Hose to Tube .....	1

WHEN ORDERING PARTS, ALWAYS STATE MODEL AND SERIAL NO. OF MACHINE

1067A

HYDRAULIC ELEVATOR SYSTEM - SCRAPER



**HYDRAULIC ELEVATOR SYSTEM – SCRAPER**

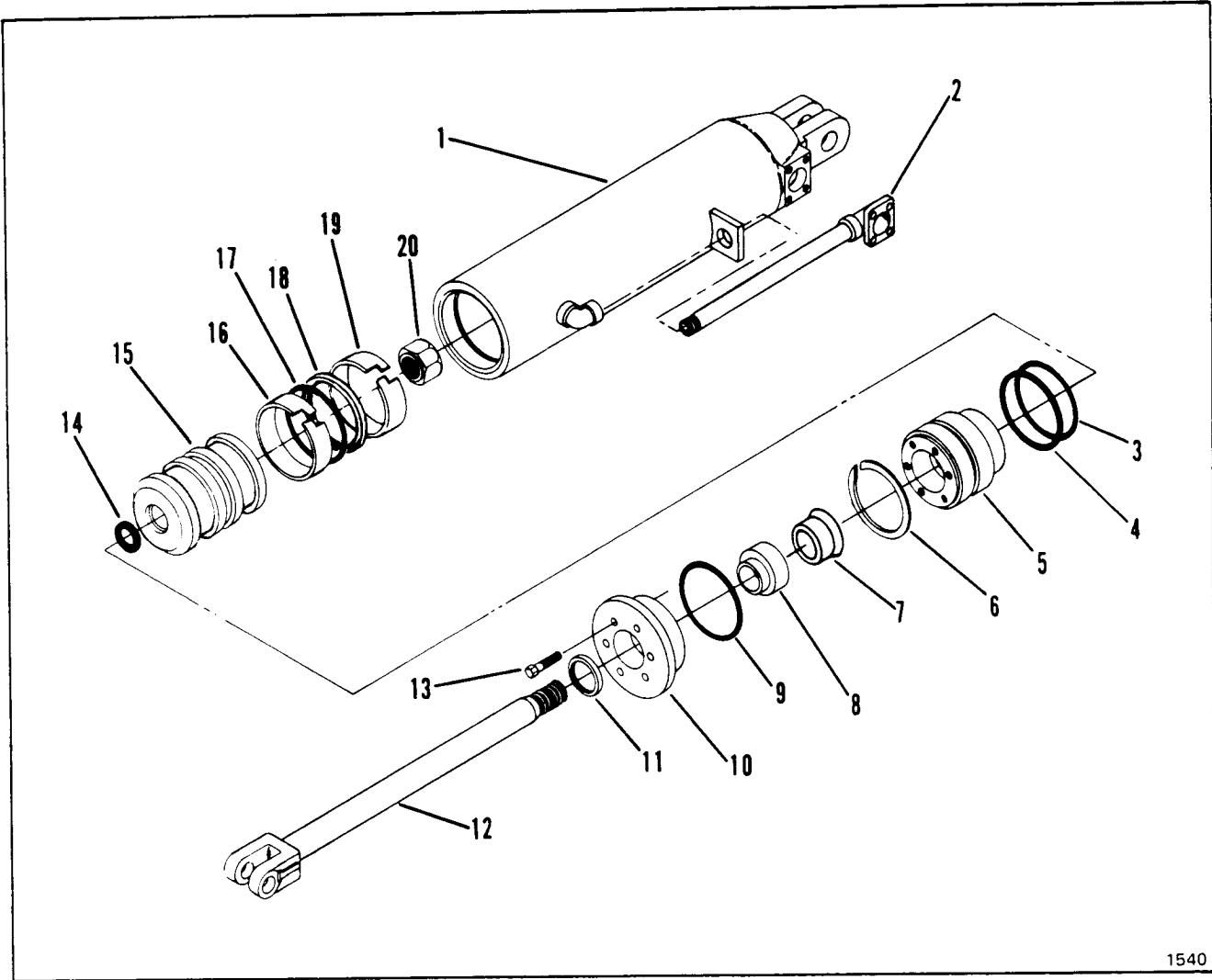
Item	Part No.	Description	Qty.	Item	Part No.	Description	Qty.
1	1503378	HOSE ( For Serial: 5UCH500 & After) .....	1	36	58K-228	O-RING, Hose to Motor .....	1
1A	1533298	HOSE (For Serial: 5UCH-101 thru 499) .....	1	37	-----	HYDRAULIC MOTOR ASSY (See Index) .....	1
2	1580884	HOSE .....	1	38	58K-228	O-RING, Hose to Motor .....	1
3	1544510	CLAMP .....	1	39	19J-32	FLANGE, Split .....	2
4	1522284	WASHER .....	3	40	4E-08	LKWSHR .....	4
5	18C-888	BOLT .....	3	41	17C-824	BOLT, Flange to Motor .....	4
6	1544509	CLAMP .....	1	42	1522284	WASHER .....	3
7	1522284	WASHER .....	2	43	18D-08	LOCKNUT .....	3
8	18C-888	BOLT .....	2	44	1544510	CLAMP .....	1
9	17C-824	BOLT, Flange to Swivel .....	4	45	1562651	HOSE, 2 x 100 (For Serial: 213-1001 thru 213-1023) .....	1
10	4E-08	LKWSHR .....	4	45A	1564257	†HOSE (For Serial: 213-1024 & After) .....	1
11	19J-32	FLANGE, Split .....	2	46	17C-824	BOLT, Flange to Tube .....	4
12	58K-228	O-RING .....	1	47	4E-08	LKWSHR .....	4
13	1533557	ADAPTER (For Serial: 213-1001 thru 213-1165) .....	1	48	1557875	*TUBE For Serial: 213-1001 thru 213-1023) .....	1
14	1533558	JOINT, Swivel (Inc. 14A thru 14C (For Serial: 213-1001 thru 213-1165) .....	—	49	58K-228	O-RING .....	1
14A	1563611	†#KIT, Swivel Joint Packing (For Serial: 213-1001 thru 213-1165) .....	—	50	1533557	ADAPTER (For Serial: 213-1001 thru 213-1165) .....	1
14B	948365	†#BALL PROTECTOR PLUG ASSY (Inc. Grease Fitting, Cap, Plug & "O" Ring) (For Serial: 213-1001 thru 213-1165) .....	—	51	1533558	JOINT, Swivel Joint Packing (For Serial: 213-1001 thru 213-1165) ...	1
14C	10J-08	†BALL, Swivel Joint (For Serial: 213-1001 thru 213-1165) .....	52	51A	1563611	†#KIT, Swivel Joint Packing (For Serial: 213-1001 thru 213-1165) ...	—
14D	1566453	†JOINT, Swivel (Inc. 14E) (For Serial: 213-1166 & After) .....	1	51B	948365	†#BALL PROTECTOR PLUG ASSY (Inc. Grease Fitting, Cap, Plug & O-Ring) (For Serial: 213-1001 thru 213-1165) .....	—
14E	1566693	†#KIT, Swivel Joint Repair (For Serial: 213-1166 & After) .....	—	51C	10J-08	†BALL, Swivel Joint (For Serial: 213-1001 thru 213-1165) .....	52
15	17C-824	BOLT, Flange to Swivel .....	4	51D	1566453	†JOINT, Swivel (Inc. 51E) (For Serial: 213-1166 & After) .....	1
16	4E-08	LKWSHR .....	4	51E	1566693	†#KIT, Swivel Joint Repair (For Serial: 213-1166 & After) .....	—
17	1533557	ADAPTER (For Serial: 213-1001 thru 213-1165) .....	1	52	1533557	ADAPTER (For Serial: 213-1001 thru 213-1165) .....	1
18	58K-228	O-RING .....	1	53	58K-228	O-RING, Hose to Swivel .....	1
19	1557874	TUBE (For Serial: 213-1001 thru 213-1023) .....	1	54	19J-32	FLANGE, Split .....	2
20	1557877	TUBE, Drain .....	1	55	4E-08	LKWSHR .....	4
21	19J-32	FLANGE, Split .....	2	56	17C-824	BOLT .....	4
22	58K-228	O-RING , Hose to Tube .....	1	57	1503373	HOSE (For Serial: 5UCH-500 & After) .....	1
23	58K-228	O-RING, Hose to Tube .....	1	57A	1536318	HOSE (For Serial: 5UCH-101 thru 499) .....	1
24	19J-32	FLANGE, Split .....	2	58	1522284	WASHER .....	2
25	4E-06	LKWSHR .....	4	59	18D-08	LOCKNUT .....	2
26	17C-824	BOLT, Flange to Tube .....	4	60	18C-888	BOLT .....	2
27	1562651	HOSE, 2 x 100 (For Serial: 213-1001 thru 213-1023) .....	1	61	1522284	WASHER .....	2
27A	1564256	†HOSE (For Serial: 213-1024 & After) .....	1	62	1544509	CLAMP .....	1
28	18C-888	BOLT .....	3	63	36F-04	ADAPTER .....	1
29	1522284	WASHER .....	3	64	1544509	CLAMP .....	1
30	1544510	CLAMP .....	1	65	1522284	WASHER .....	2
31	1564255	HOSE, ½ x 88 – Tube to Motor ....	1	66	18D-08	LOCKNUT .....	2
32	17C-824	BOLT, Flange to Motor .....	4	67	18D-08	LOCKNUT .....	3
33	4E-08	LKWSHR .....	4	68	1522284	WASHER .....	3
34	19J-32	FLANGE, Split .....	2	69	1544510	CLAMP .....	1
35	31F-04	ADAPTER, 90° UNION .....	1	70	1544509	CLAMP .....	1

† Not Illustrated  
‡ As Required

\*NOTE: See SG-729

**WHEN ORDERING PARTS, ALWAYS STATE MODEL AND SERIAL NO. OF MACHINE**





1540

**CYLINDER – HYDRAULIC LIFT AND EJECTION**  
For Serial: 213-1001 thru 1445

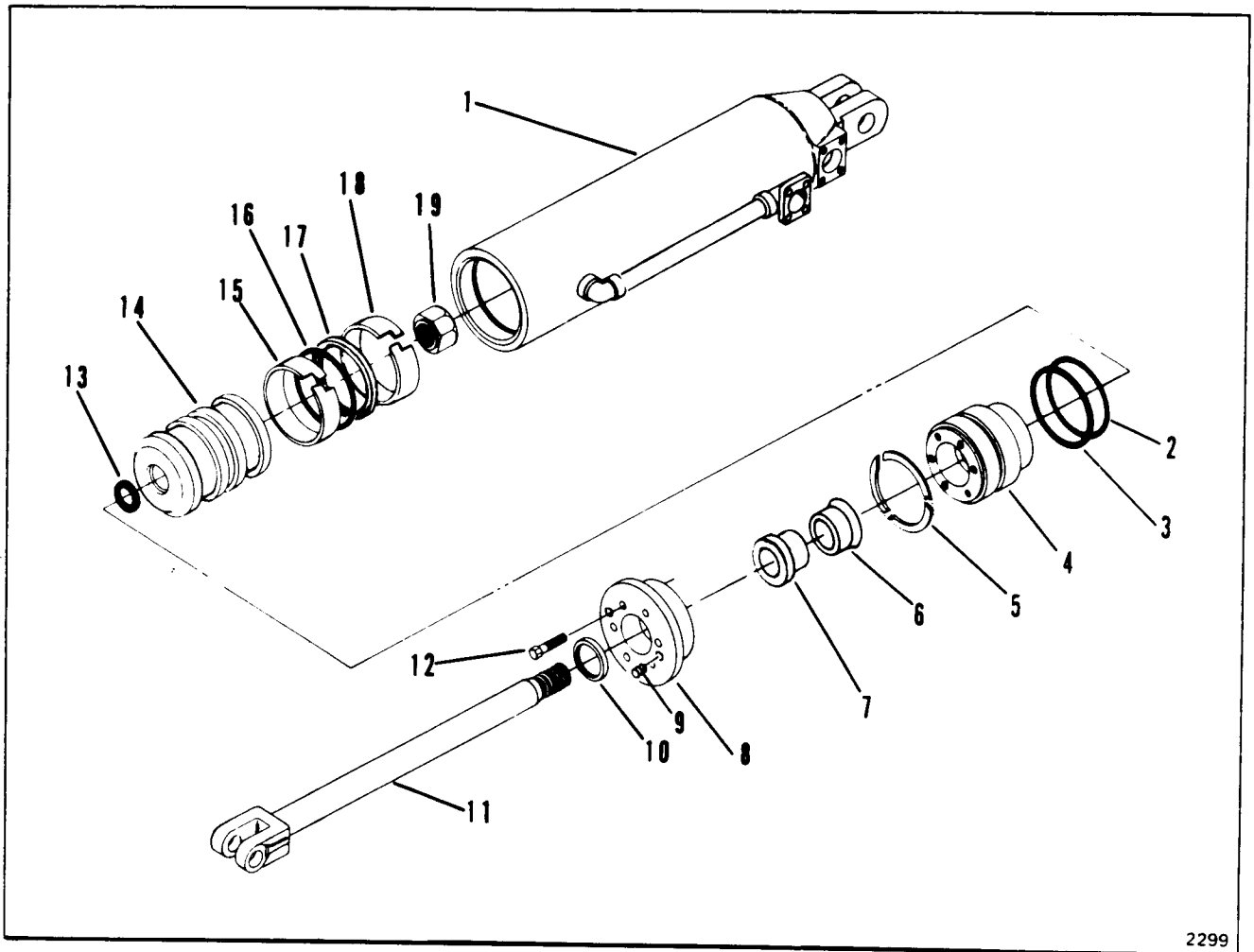
Item	Part No.	Description	Qty.
A	1572161	*HYDRAULIC CYLINDER ASSY (Inc 1 thru 20)	4
<p>*NOTE: Four (4) Hydraulic Cylinder Assemblies required per machine – Quantities listed below are for one (1) Cylinder Assembly.</p>			
B	1573181	‡ KIT, Cylinder Repair (Inc 3, 4, 6, 7, 8, 9, 11, 14, 16, 17, 18 & 19)	—
1	1564330	BARREL, Cylinder (Inc 2)	1
2	1564333	TUBE, Transfer	1
3	73K-433	RING, Back-Up	1
4	25K-80516	“O” RING	1
5	1572037	HEAD	1

Item	Part No.	Description	Qty.
6	563377	RING, Retaining	1
7	1569548	MONOSEAL	1
8	1564315	SLEEVE, Gland	1
9	25K-40600	“O” RING	1
10	1572246	GLAND	1
11	947641	SEAL, Wiper	1
12	1571914	ROD, Cylinder	1
13	33C-828	BOLT, Gland to Head	5
14	25K-60116	“O” RING	1
15	1572160	PISTON, Cylinder	1
16	1503013	RING, Wear	1
17	1503467	SEAL	1
18	1502845	RING	1
19	1503013	RING, Wear	1
20	60D-24	NUT, Rod	1

‡ As Required

\*NOTE: For Complete Replacement use 1578024

**WHEN ORDERING PARTS, ALWAYS STATE MODEL AND SERIAL NO. OF MACHINE**



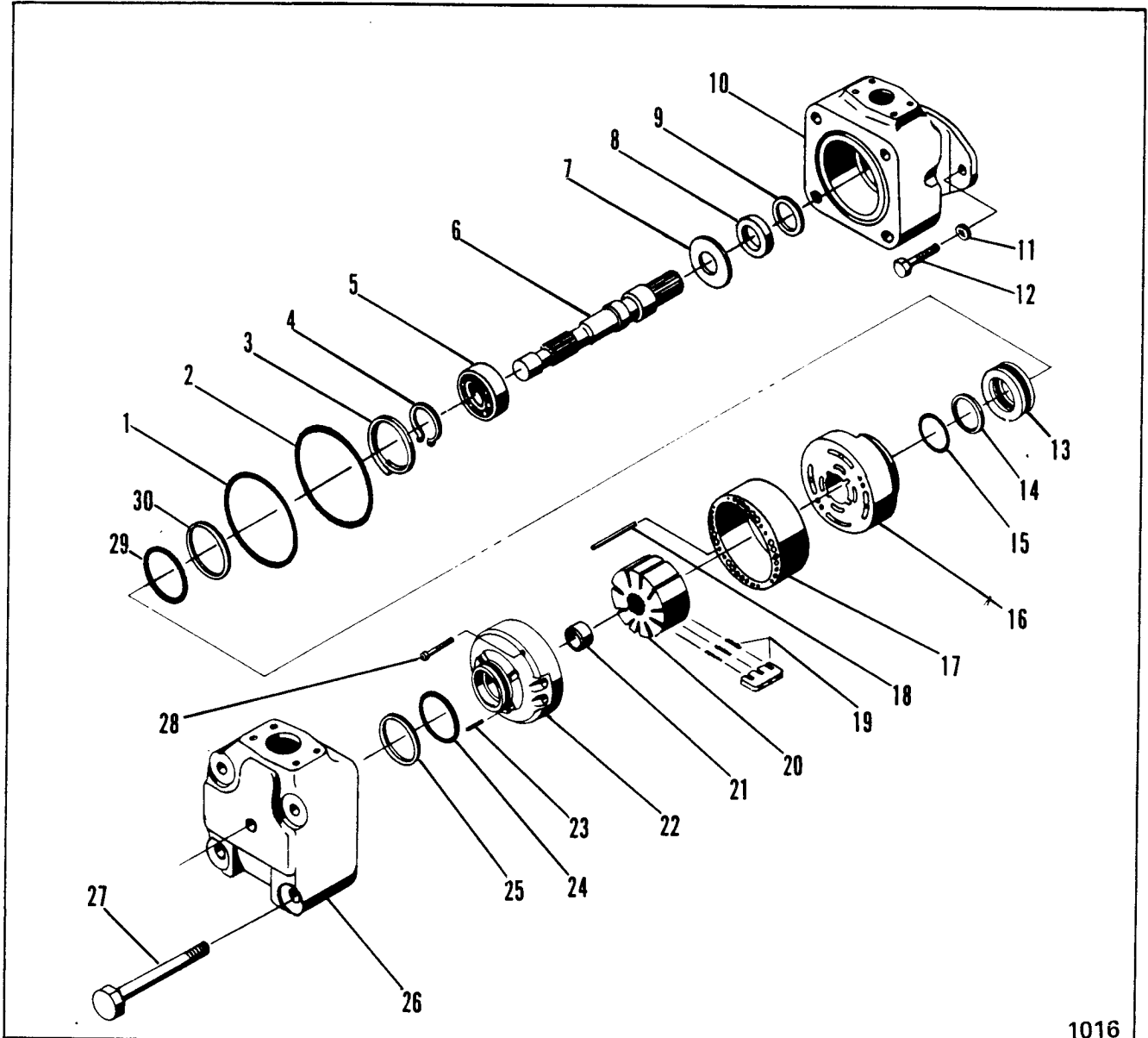
2299

**CYLINDER – HYDRAULIC LIFT AND EJECTION**

For Serial: 213-1446 & After

Item	Part No.	Description	Qty.	Item	Part No.	Description	Qty.
A	1578024	*HYDRAULIC CYLINDER ASSY (Inc 1 thru 19) .....	4	7	1577511	SLEEVE, Gland .....	1
	*NOTE:	Four (4) Hydraulic Cylinder Assemblies required per machine—Quantity listed below are for one (1) Cylinder Assy.		8	1577510	GLAND .....	1
1	1578023	BARREL, Cylinder .....	1	9	15G-808	SET SCREW .....	2
2	532563	RING, Back-Up .....	1	10	947641	SEAL, Wiper .....	1
3	25K-80516	O-RING .....	1	11	1571914	ROD, Cylinder .....	1
4	1577515	HEAD .....	1	12	33C-824	BOLT, Gland to Head .....	6
5	1578757	RETAINER, Segment .....	3	13	25K-60116	O-RING .....	1
6	1569548	MONOSEAL .....	1	14	1577519	PISTON, Cylinder .....	1
				15	1503013	RING, Wear .....	1
				16	1503467	SEAL .....	1
				17	1502845	RING .....	1
				18	1503013	RING, Wear .....	1
				19	1572164	NUT, Rod .....	1

**WHEN ORDERING PARTS, ALWAYS STATE MODEL AND SERIAL NO. OF MACHINE**



1016

**MOTOR-ELEVATOR HYDRAULIC**

Item	Part No.	Description	Qty.
A	1550912	ASSY, Hydraulic Motor (Incl C, 1 thru 10 and 13 thru 30)	1
B	1551030	‡KIT, Motor Cartridge (Incl. 1, 2, 8, 9, 14 thru 25 and 28)	1
C	1551031	KIT, Motor Seal (Incl. 1, 2, 8, 9, 14, 15, 24, 25, 29 and 30)	1
1	---	∞O-RING (See 'C')	1
2	---	∞O-RING (See 'C')	1
3	799371	RING, Lock	1
4	658128	RING, Retaining	1
5	654299	BEARING	1
6	1550913	SHAFT, Motor	1
7	892125	WASHER	1
8	---	∞SEAL, Shaft (See 'C')	1
9	---	∞WIPER (See 'C')	1
10	1550914	BODY	1

Item	Part No.	Description	Qty.
11	4E-10	LKWSHR	2
12	17C-1028	BOLT, Motor Mounting	2
13	1550921	ADAPTER, Hub	1
14	---	∞RING, Back-up (See 'C')	1
15	---	∞O-RING (See 'C')	1
16	1550915	PLATE, Pressure	1
17	1550924	RING, Motor	1
18	1568757	PIN	2
19	1550916	*KIT, Vane (Inc 10 Vanes and 40 Springs)	1
20	1550923	ROTOR	1
21	946227	BUSHING	1
22	1550922	PLATE, Pressure (Incl. 21)	1
23	1568755	PIN	2
24	---	∞O-RING (See 'C')	1
25	---	∞RING, Back-up (See 'C')	1
26	1550917	COVER, Motor	1
27	17C-1292	BOLT, Cover to Body	4
28	1568754	SCREW	2
29	---	∞O-RING (See 'C')	1
30	---	∞RING, Back-up (See 'C')	1

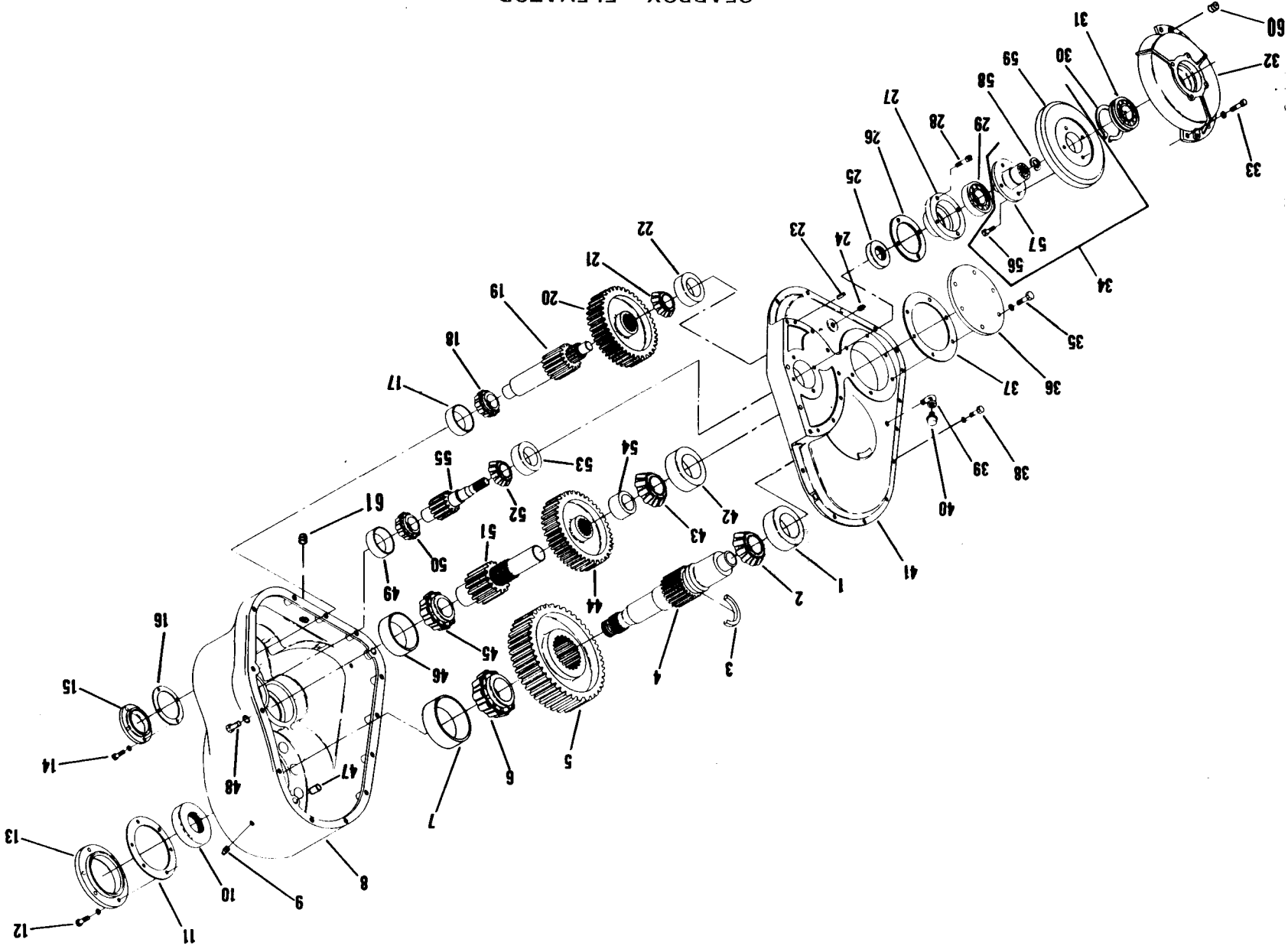
\*NOTE: Vane Kit Incl. 10 Vanes & 40 Springs.

‡As Required  
∞Not Sold Separately

**WHEN ORDERING PARTS, ALWAYS STATE MODEL AND SERIAL NO. OF MACHINE**

1046

GEARBOX - ELEVATOR



GEARBOX - ELEVATOR

Item	Part No.	Description	Qty.
A	1577405	ELEVATOR GEARBOX ASSY (Inc 1 thru 60 ) .....	1
1	658985	CUP, Output Bearing .....	1
2	658966	CONE, Output Bearing .....	1
3	1561474	SPACER, Split (Two pieces) .....	1
4	1561485	SHAFT, Output .....	1
5	1561484	GEAR, 39T Output .....	1
6	658979	CONE, Output Bearing .....	1
7	658994	CUP, Output Bearing .....	1
8	1577398	HOUSING, Main .....	1
9	16F-08	PLUG .....	1
10	1551574	SEAL, Output Oil .....	1
11	1569632	SHIM PACK (Inc 11A, 11B, 11C)....	1
11A	1561495	‡SHIM, .005 Output .....	-
11B	1561496	‡SHIM, .007 Output .....	-
11C	1561497	‡SHIM, .020 Output .....	-
12	17C-832	BOLT, Output Cap .....	6
12A	4E-08	LKWSHR .....	6
13	1561491	CAP, Output Bearing .....	1
14	17C-620	BOLT, 1st Inter. & Flywheel Housing .....	4
14A	4E-06	LKWSHR .....	4
15	1561471	CAP, 1st Inter. Bearing .....	1
16	1569631	SHIM PACK (Inc 16A, 16B, 16C) ....	1
16A	1561476	‡SHIM, .005 1st Inter.....	-
16B	1561477	‡SHIM, .007 1st Inter. ....	-
16C	1561478	‡SHIM, .020 1st Inter. ....	-
17	731127	CUP, 1st Inter. Bearing .....	1
18	731128	CONE, 1st Inter. Bearing .....	1
19	1561481	SHAFT, 1st Inter. ....	1
20	1561475	GEAR, 55T 1st Inter. ....	1
21	1313675	CONE, 1st Inter. Bearing .....	1
22	1304003	CUP, 1st Inter. Bearing .....	1
23	743836	DOWEL, Flywheel Housing .....	2
24	13F-08	PLUG .....	1
25	1551573	SEAL, Input Oil .....	1
26	1569630	SHIM PACK (Inc 26A, 26B, 26C) 1	1
26A	1561488	‡SHIM, .005 Input .....	-
26B	1561489	‡SHIM, .007 Input .....	-
26C	1561490	‡SHIM, .020 Input .....	-
27	1561509	RETAINER, Bearing .....	1
28	1561510	BOLT, Socket Head .....	4

Item	Part No.	Description	Qty.
29	1579165	BEARING, Ball .....	1
30	---	SRING, Bearing Retaining (See 31) --	-
31	1579166	BEARING, Ball (Inc 30) .....	1
32	1561505	HOUSING, Flywheel .....	1
33	17C-620	BOLT, Flywheel Housing .....	6
33A	4E-06	LKWSHR .....	6
34	1561506	FLYWHEEL ASSY Inc 56, thru 59) .....	1
35	17C-620	BOLT, 1st Inter. Cover .....	6
35A	4E-06	LKWSHR .....	6
36	1561472	COVER, 2nd Inter. Bearing .....	1
37	1569633	SHIM PACK (Inc 37A, 37B, 37C) 1	1
37A	1561492	‡SHIM, .005 2nd Inter. ....	-
37B	1561493	‡SHIM, .007 2nd Inter. ....	-
37C	1561494	‡SHIM, .020 2nd Inter. ....	-
38	17C-828	BOLT, Side Housing to Main Housing .....	12
38A	4E-08	LKWSHR .....	12
39	26F-04	ELBOW, Street .....	1
40	1551419	BREATHER .....	1
41	1569517	HOUSING, Side .....	1
42	710990	CUP, 2nd Inter. Bearing .....	1
43	1313682	CONE, 2nd Inter. Bearing .....	1
44	1561482	GEAR, 44T, 2nd Inter. ....	1
45	662753	CONE, 2nd Inter. Bearing .....	1
46	664399	CUP, 2nd Inter. Bearing .....	1
47	601508	DOWEL, Housing to Housing .....	2
48	17C-852	BOLT .....	2
48A	4E-08	LKWSHR .....	2
49	710786	CUP, Input Bearing .....	1
50	710787	CONE, Input Bearing .....	1
51	1561483	SHAFT, 2nd Inter. ....	1
52	710787	CONE, Input Bearing .....	1
53	710786	CUP, Input Bearing .....	1
54	1561473	SPACER, Bearing .....	1
55	1577397	SHAFT, Input .....	1
56	1561500	BOLT, Hub to Flywheel .....	4
57	1561508	ADAPTER, Flywheel .....	1
58	664140	RING, Retaining .....	1
59	---	‡FLYWHEEL (See 34) .....	1
60	1312034	SET SCREW .....	2
61	1566344	PLUG, Drain .....	1

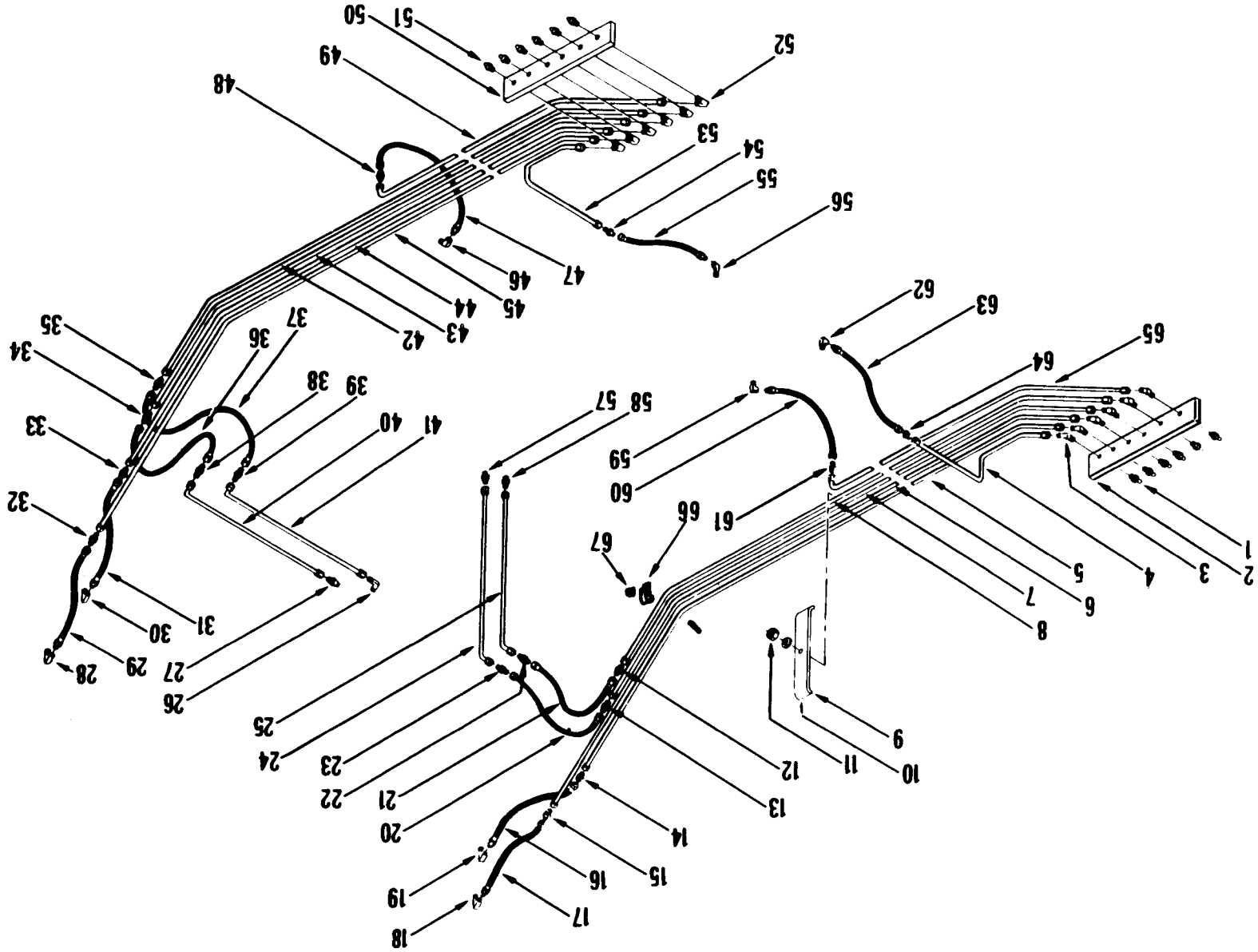
‡ As Required

§ Not Sold Separately

WHEN ORDERING PARTS, ALWAYS STATE MODEL AND SERIAL NO. OF MACHINE

1088

LUBRICATION - SCRAPER CENTRAL

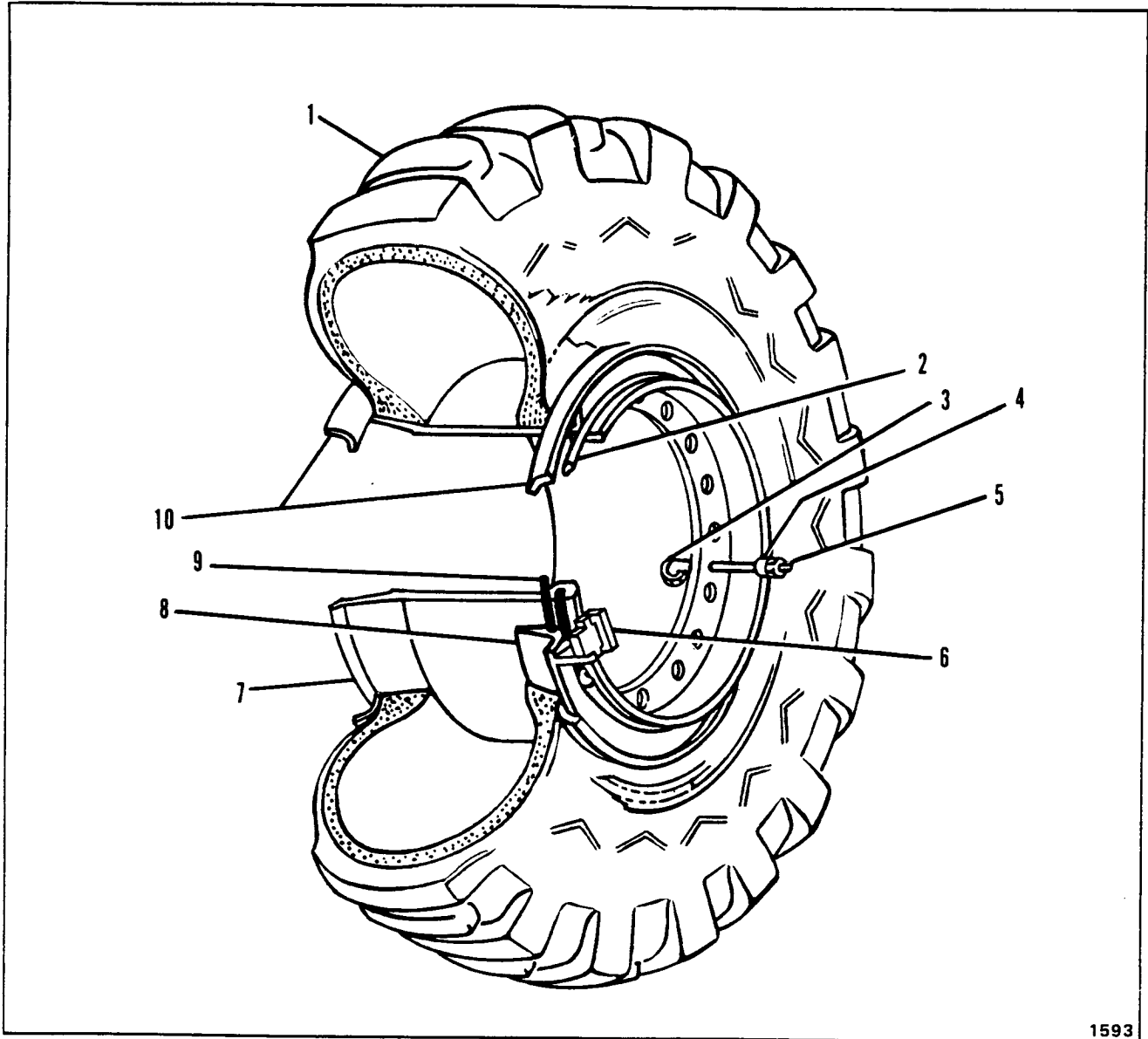


**LUBRICATION—SCRAPER CENTRAL**

Item	Part No.	Description	Qty.
1	11H-25	FITTING, Grease	6
2	1563511	BLOCK, Fitting Grease	2
3	1551025	ADAPTER, Elbow 90°	6
4	1558485	TUBE - 1/4 x 10	1
5	1558486	TUBE - 1/4 x 82	1
6	1558487	TUBE - 1/4 x 90	1
7	1558489	TUBE - 1/4 x 75	1
8	1558488	TUBE - 1/4 x 74 1/2	1
9	1555317	FLAT, Tubes to Bracket	8
10	1555316	BRACKET	8
11	17D-3	NUT, Lock	8
12	1551024	ADAPTER, Union 1/4	1
13	1551024	ADAPTER, Union 1/4	1
14	1551024	ADAPTER, Union 1/4	1
15	1551024	ADAPTER, Union 1/4	1
16	1550844	HOSE, Tube to Elbow 90° 1/8 x 15	1
17	1550844	HOSE, Tube to Elbow 90° 1/8 x 15	1
18	672202	ELBOW 90°	1
19	672202	ELBOW 90°	1
20	1550843	HOSE, To Rolling Floor Cylinder Pin 1/8 x 15	1
21	1550843	HOSE, To Rolling Floor Yoke Pin 1/8 x 15	1
22	1551024	ADAPTER, Union 1/4	1
23	1551024	ADAPTER, Union 1/4	1
24	1558502	TUBE, To Rolling Floor Cylinder Pin 1/4 x 35	1
25	1558493	TUBE, To Rolling Floor Yoke Pin 1/4 x 50	1
26	1551025	ELBOW 90°	1
27	1551024	ADAPTER, Union 1/4	1
28	1551025	ELBOW 90°	1
29	1550844	HOSE, Tube to Elbow 90° 1/4 x 15	1
30	1551025	ELBOW 90°	1
31	1550844	HOSE, Tube to Elbow 90° 1/4 x 15	1
32	1551024	ADAPTER, Union 1/4	1
33	1551024	ADAPTER, Union 1/4	1
34	1551024	ADAPTER, Union 1/4	1

Item	Part No.	Description	Qty.
35	1551024	ADAPTER, Union 1/4	1
36	1550843	HOSE, To Endgate Cylinder Pin 1/4 x 15	1
37	1550843	HOSE, To Endgate Yoke Pin	1
38	1551024	ADAPTER, Union 1/4	1
39	1551024	ADAPTER, Union 1/4	1
40	1558503	TUBE - 1/4 x 39	1
41	1558504	TUBE - 1/4 x 39	1
42	1558497	TUBE - 1/4 x 79	1
43	1558498	TUBE - 1/4 x 81	1
44	1558495	TUBE - 1/4 x 81	1
45	1558496	TUBE - 1/4 x 89	1
46	672202	ELBOW 90°	1
47	1550844	HOSE, Tube to Brake Camshaft 1/4x 15	1
48	1550844	ADAPTER, Union 1/4	1
49	1558506	TUBE - 1/4 x 44	1
50	1563511	BLOCK, Grease Fitting	1
51	11H-15	FITTING, Grease	6
52	1551025	ADAPTER, Elbow 90°	6
53	1558494	TUBE - 1/4 x 33 1/2	1
54	1551024	ADAPTER, Union 1/4	1
55	1550844	HOSE, To Endgate Cylinder Hanger 1/4 x 15	1
56	672202	ELBOW 90°	1
57	1551024	ADAPTER, Union 1/4	1
58	1551025	ADAPTER, Union - 90°	1
59	672202	ELBOW 90°	1
60	1550844	HOSE, Tube to Brake Camshaft 1/4 x 15	1
61	1551024	ADAPTER, Union 1/4	1
62	672202	ELBOW 90°	1
63	1550844	HOSE, Tube to Floor Cylinder Pin 1/4 x 15	1
64	1551024	ADAPTER, Union 1/4	1
65	1558505	TUBE - 1/4 x 44	1
66	30H-14	CLAMP	14
67	17D-01	NUT	14

**WHEN ORDERING PARTS, ALWAYS STATE MODEL AND SERIAL NO. OF MACHINE**



1593

WHEEL AND TIRE DATA

Item	Part No.	Description	Qty.
1	---	TIRE, 29.5 x 25 .....	2
2	543563	RING, Lock .....	2
3	509445	ASSEMBLY, Valve Stem .....	2
4	551684	ADAPTER, Valve Stem .....	2
5	551685	CAP, Valve .....	2

Item	Part No.	Description	Qty.
6	523247	DRIVER .....	2
7	1546913	WHEEL .....	2
8	562303	BAND, Bead Seat .....	2
9	580278	O-RING, Band .....	2
10	522329	FLANGE .....	4
11	529310	†PLUG, Water Filling .....	2
12	15G-1416	SCREW .....	6

† Not Illustrated

WHEN ORDERING PARTS, ALWAYS STATE MODEL AND SERIAL NO. OF MACHINE



DECALS AND NAME PLATES

Item No.	Part No.	Description	No Req'd
1	1583632	†DECAL, 210 .....	2
2	2513351	†DECAL, Clark Equipment .....	3
3	2513631	†DECAL, Michigan .....	2
4	1567980	†PLATE, Central Lubrication .....	1
5	6C-705	†SCREW, Drive .....	12

† Not Illustrated

**NOTES**

---

---

---

---

---

---

---

---

---

---

---

---

---

---

---

---

---

---

---

---

---

---

---

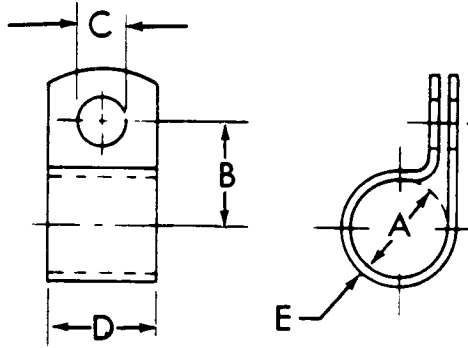
---

ALWAYS STATE MODEL AND SERIAL NUMBER, WHEN ORDERING PARTS

**WIRING, PIPE AND HOSE CLIPS**

The following types of clips are used in connection with the various wiring, fuel, air and hydraulic piping systems employed in this unit. When replacing clips identification can be made by checking type and physical dimensions listed to obtain part number.

**CLOSED CLIP**



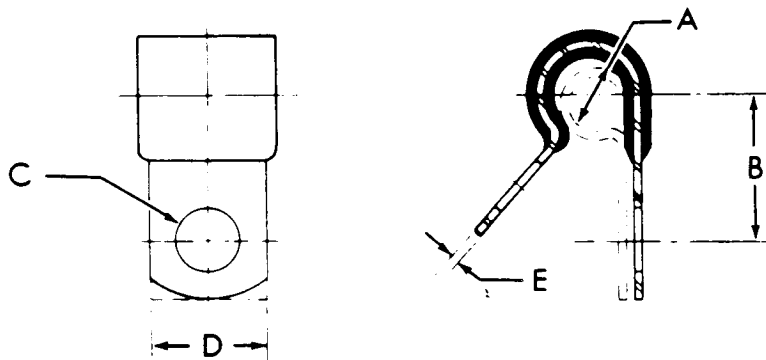
TS-5009-P

Item No.	PART NUMBER	A	B	C	D	E	F
1	6H-9	$\frac{5}{16}$	$2\frac{1}{32}$	$1\frac{3}{32}$	$\frac{3}{4}$	.032	
2	6H-16	$\frac{5}{8}$	$1\frac{3}{16}$	$1\frac{3}{32}$	$\frac{3}{4}$	.048	
3	6H-18	$\frac{3}{4}$	$3\frac{1}{32}$	$1\frac{3}{32}$	$\frac{3}{4}$	.060	
4	6H-23	$1\frac{3}{4}$	$1\frac{5}{8}$	$1\frac{3}{32}$	1	.060	
5	6H-35	$1\frac{5}{8}$	$1\frac{9}{16}$	$1\frac{3}{32}$	$\frac{7}{8}$	.060	
6	6H-41	$\frac{7}{8}$	$1\frac{1}{16}$	$1\frac{3}{32}$	$\frac{3}{4}$	.060	

**WIRING, PIPE AND HOSE CLIPS**

The following types of clips are used in connection with the various wiring, fuel, air and hydraulic piping systems employed in this unit. When replacing clips identification can be made by checking type and physical dimensions listed to obtain part number.

**INSULATED CLIP**



TS-5008-P

Item No.	PART NUMBER	A	B	C	D	E	F
1	30H-20	$\frac{5}{16}$	$1\frac{1}{16}$	$1\frac{3}{32}$	$\frac{3}{4}$	.036	
2	30H-38	$\frac{5}{8}$	$2\frac{7}{32}$	$1\frac{3}{32}$	$\frac{3}{4}$	.050	

**WHEN ORDERING PARTS, ALWAYS STATE MODEL AND SERIAL NO. OF MACHINE**

**OPTIONS AND ACCESSORIES**

Item	Part No.	Description	Qty.	Item	Part No.	Description	Qty.
A	1573867	FENDER OPTION KIT (Inc 1 thru 24) .....	1	D	1577167	FENDER EXTENSION KIT (Inc 1 thru 3) .....	1
1	1573011	FLAT .....	2	1	1577166	INSTALLATION DWG .....	1
2	1573012	FLAT .....	2	2	1543549	FENDER EXTENSION.....	1
3	1573013	ANGLE .....	2	3	1543550	FENDER EXTENSION.....	1
4	1573016	FENDER ASSY, R.H. ....	1	E	1575878	REVERSING ELEVATOR KIT (Inc 1 thru 42) .....	1
5	1573019	FENDER ASSY, L.H. ....	1	1	1575876	MOUNTING PLATE .....	1
6	1573060	MUD GUARD .....	2	2	1544129	ELEVATOR VALVE .....	1
7	1573646	TAB .....	2	3	1537964	CYLINDER .....	1
8	4E-08	LKWSHR .....	16	4	25K-40300	"O" RING .....	1
9	17D-06	LOCKNUT .....	16	5	1551684	FLANGE PLUG .....	1
10	17C-816	BOLT .....	26	6	1306625	"O" RING .....	2
11	17C-820	BOLT .....	8	7	1511522	FLANGE, Split.....	2
12	25E-22	FLATWASHER .....	18	8	17C-824	BOLT .....	20
13	30H-38	CLAMP .....	9	9	4E-08	LKWSHR .....	27
14	1528606	STUD .....	9	10	18C-820	BOLT .....	4
15	17D-03	LOCKNUT .....	9	11	18C-888	BOLT .....	3
16	1736442	CLAMP .....	20	12	1503378	HOSE .....	2
17	1574381	PLATE ASSY .....	2	13	1511521	FLANGE, Split .....	8
18	1574048	BOLT .....	4	14	1306624	"O" RING .....	4
19	1574384	TAIL LIGHT .....	4	15	18D-07	NUT, Jam .....	1
20	1574385	REFLECTOR .....	2	16	1544126	CLEVIS.....	1
21	1G-816	SCREW .....	10	17	4F-10146	PIN .....	1
22	50D-08	LOCKNUT .....	10	18	1F-416	COTTER .....	1
23	1671474	CONNECTOR .....	2	19	1511427	HOSE .....	1
24	1574386	LOOM ASSY .....	1	20	711087	ADAPTER .....	2
B	1576103	BACK-UP ALARM KIT (Inc 1 thru 16).....	1	21	31F-02	ADAPTER .....	1
1	1542966	BACK-UP ALARM .....	1	22	30H-38	CLIP .....	4
2	1574941	BRACKET ASSY .....	1	23	6K-04	VALVE .....	2
3	30H-39	CLIP .....	4	24	75F-02	COUPLING.....	2
4	131987	STUD .....	1	25	559772	HOSE .....	2
5	17D-03	NUT .....	3	26	1502686	HOSE .....	1
6	1566390	SWITCH .....	1	27	586973	HOSE .....	2
7	1575614	WIRE ASSY .....	1	28	301841	ADAPTER .....	1
8	1736442	TIE .....	12	29	1546854	TEE .....	4
9	1671474	CONNECTOR .....	1	30	5K-248	NIPPLE .....	1
10	18F-01	TEE .....	1	31	5K-216	NIPPLE .....	1
11	542646	NIPPLE .....	1	32	18D-04	NUT .....	4
12	36F-01	ADAPTER .....	1	33	29F-01	ELBOW .....	2
13	1576126	CONDUIT .....	1	34	19F-05	BUSHING .....	2
14	1576128	INSTALLATION DWG .....	1	35	18C-436	BOLT .....	4
15	1576131	CABLE .....	1	36	1546855	VALVE .....	1
16	17C-624	BOLT .....	2	37	1544128	TUBE .....	1
C	1577189	TRACK CLEANER KIT (Inc 1 & 2)	1	38	18D-06	NUT .....	1
1	1576772	TRACK CLEANER .....	4	39	619021	WASHER .....	2
2	1577188	INSTALLATION DWG .....	1	40	18C-624	BOLT .....	1
				41	1575875	LUG .....	1
				42	1575877	INSTALLATION DWG .....	1

**WHEN ORDERING PARTS, ALWAYS STATE MODEL AND SERIAL NO. OF MACHINE**