

LaPLANT-CHOATE
PARTS CATALOG

SIDE-DOZER
MODEL R76
(Cable-Operated)
Serial Nos. 1 and Up

LAPLANT  **CHOATE**

MANUFACTURING

Cedar Rapids

CO., INC.

Iowa, U. S. A.

INSTRUCTIONS

LaPLANT-CHOATE MFG. CO., Inc.

CEDAR RAPIDS, IOWA

IMPORTANT INSTRUCTIONS FOR ORDERING PARTS

Our work will be simplified, your shipment will be expedited, and errors eliminated if these instructions are followed.

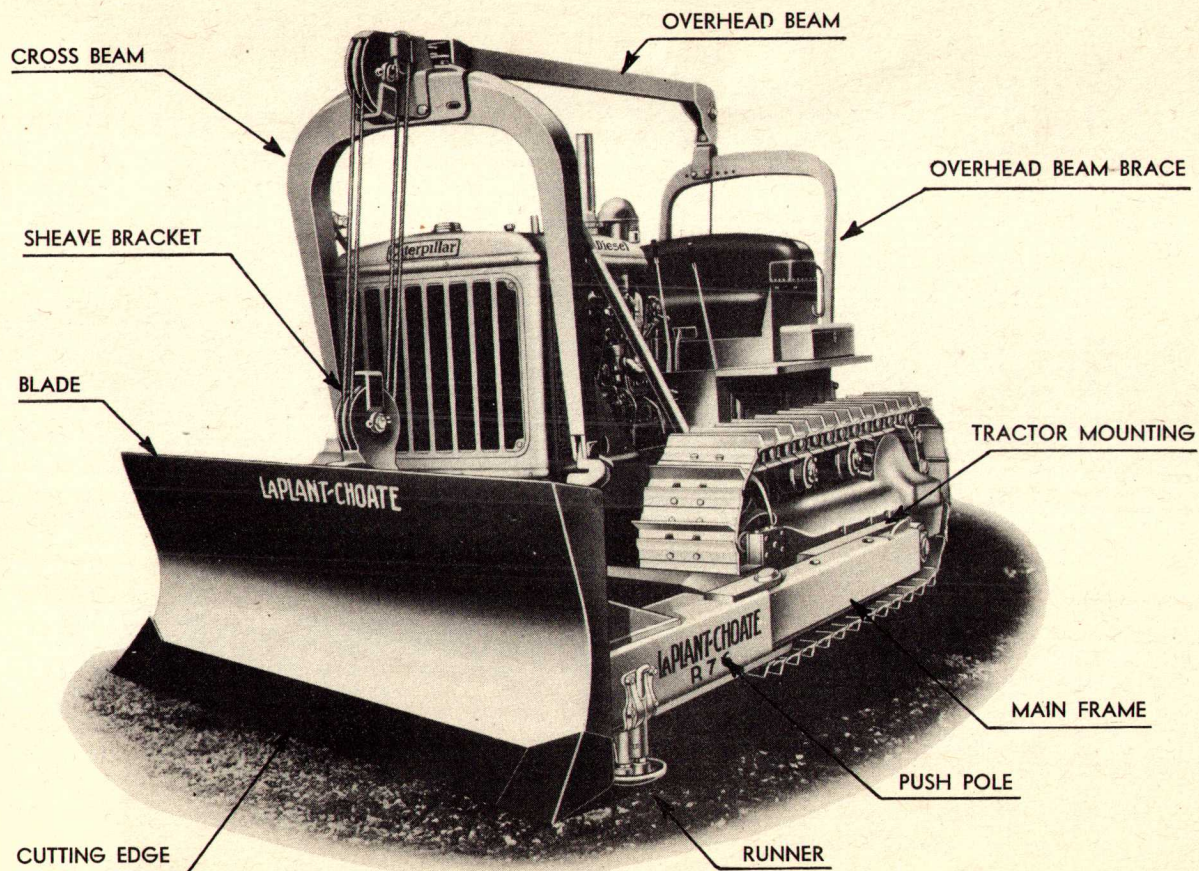
1. Give individual or firm name and destination to which shipment is to be made.
2. State clearly whether shipment shall be made by Parcel Post, Express, Air Express, Rail or Motor Freight.
3. List parts required in numerical order, stating number of pieces wanted, part number, and part name.
4. GIVE SERIAL NUMBER AND MODEL NUMBER OF PRODUCT FOR WHICH PARTS ARE BEING ORDERED.
5. Order all parts from dealer representing your district.
6. Confirm all telephone, telegraph and teletype orders in writing.

Unless the purchaser has an open account with us or has made some previous arrangement, shipments of parts will be made C. O. D. and transportation charges will be added to the price of the purchase where prepaid charges are required.

When small parts such as nuts, washers, cotter pins or special fittings are required, these should be specified in addition to the part number and listed as separate items. If for any reason it is necessary to return parts, the box or package containing same should be labeled with the sender's name and address and charges should be prepaid.

Advise us fully regarding such shipments even though there has been previous correspondence on the subject.

CODE: 1 2 3 4 5 6 7 8 9 0 -
 A B J K M N Q W X Y U



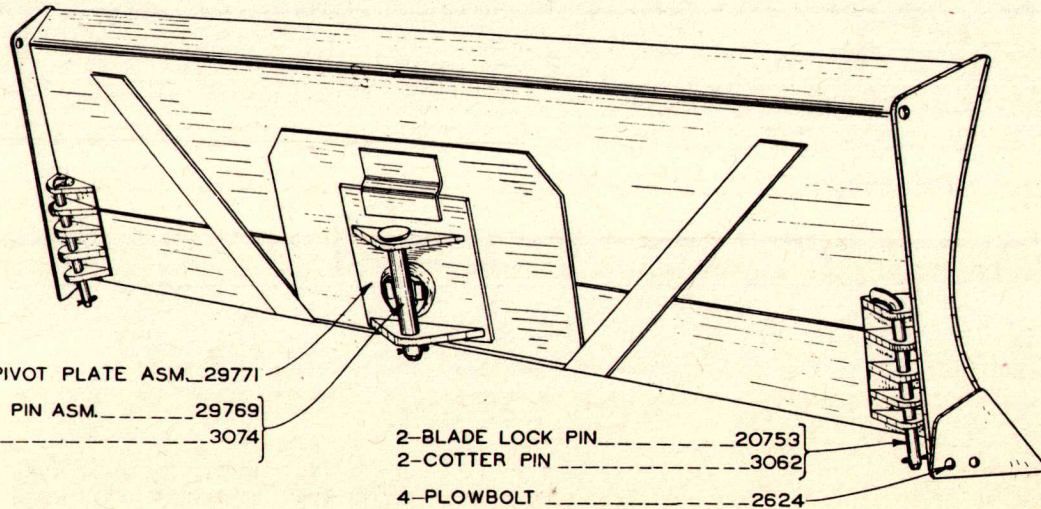
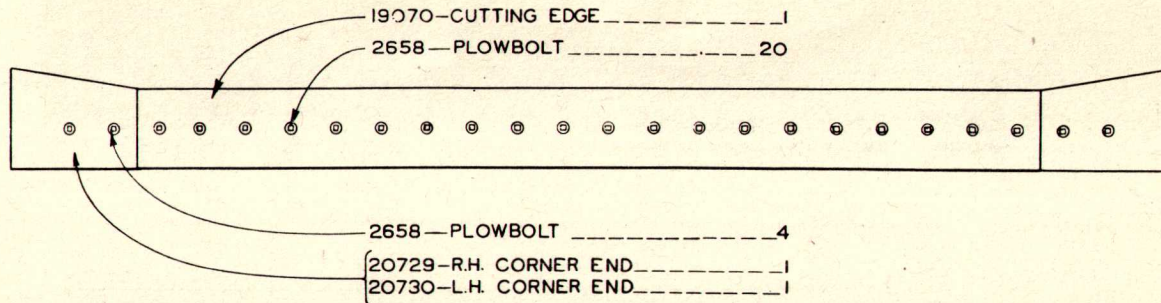
GENERAL ARRANGEMENT — MODEL R76 SIDE-DOZER

R76 SIDE-DOZER

MASTER PARTS CATALOG

	Starting on Page
General Arrangement	1
Parts Plates:	
Blade	5
Cable and Wedge	19
Cable Arrangement	20
Cross Beam	11
Main Frame	8
Overhead Beam	13
Overhead Beam Brace	16
Push Poles	6
Runner	7
Sheave Bracket	17
Tractor Mounting	10

LaPLANT-CHOATE MANUFACTURING CO., INC.
Cedar Rapids, Iowa, U. S. A.



38161 BLADE GROUP

PLATE 928

BLADE

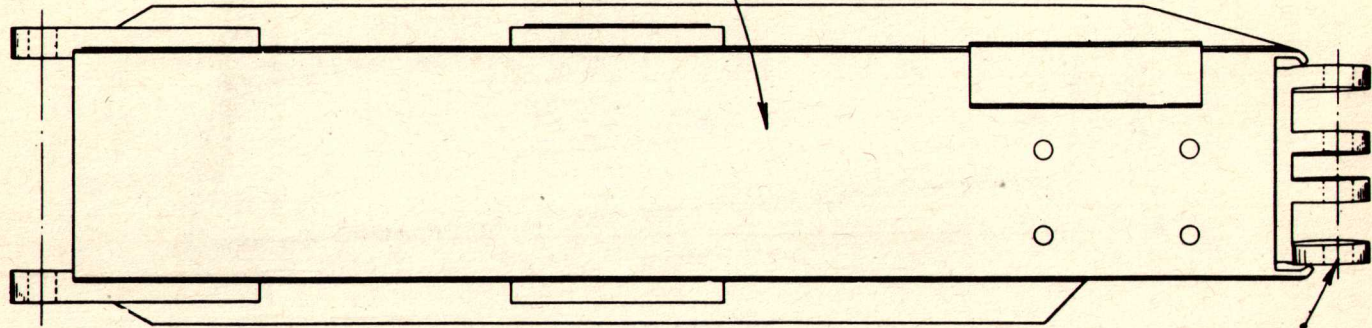
R76 — 1 AND UP

5

PUSH POLE

R76 — 1 AND UP

I-R.H. PUSH POLE ASSEMBLY__38238
I-L.H. PUSH POLE ASSEMBLY__38239

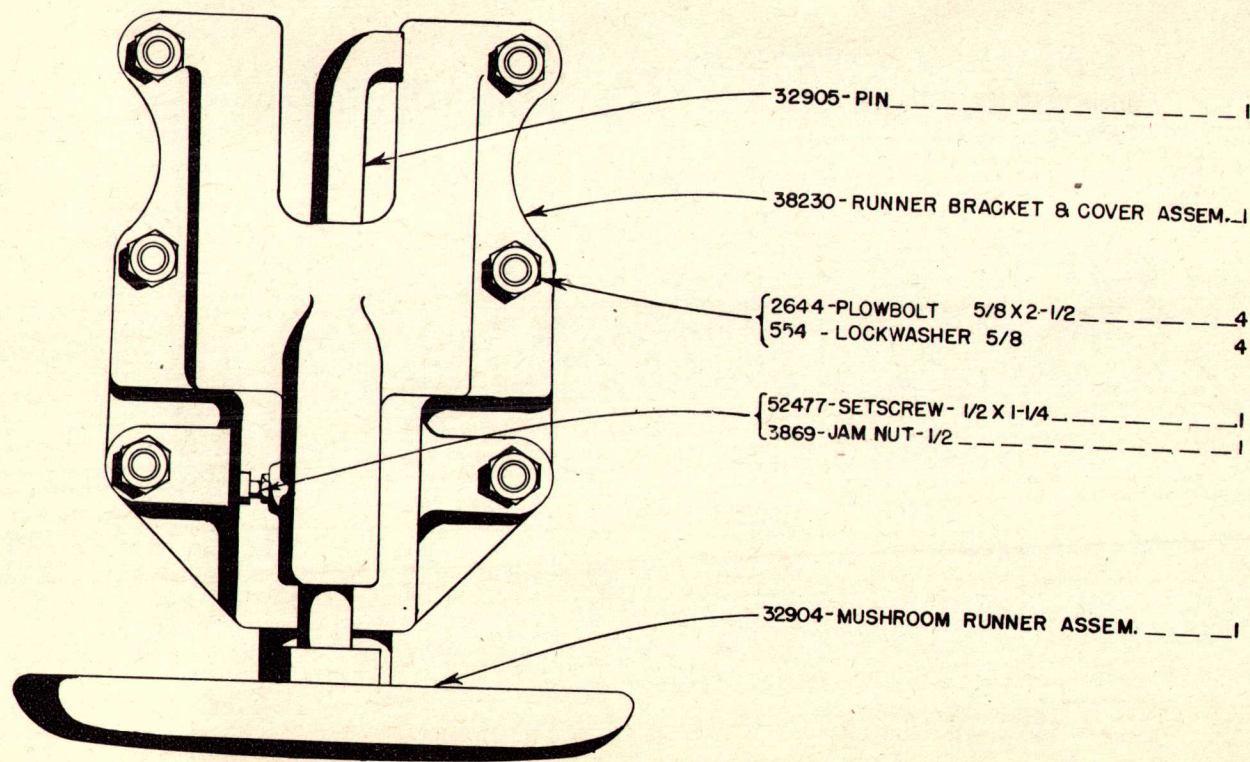


I-R.H. PUSH POLE JAW___38254
I-L.H. PUSH POLE JAW___38255

38162 PUSH POLE GROUP

870

9



36225 RUNNER GROUP (TWO REQUIRED PER MACHINE)

RUNNER

R76 — 1 AND UP

7

MAIN FRAME

R76 — 1 TO 28, INCL.

36426-PIN ASSEMBLY-----1
3063--COTTER-----1

34915-PIN ASSEMBLY-----2
(includes cotter)

33923 M.F JAW-----2

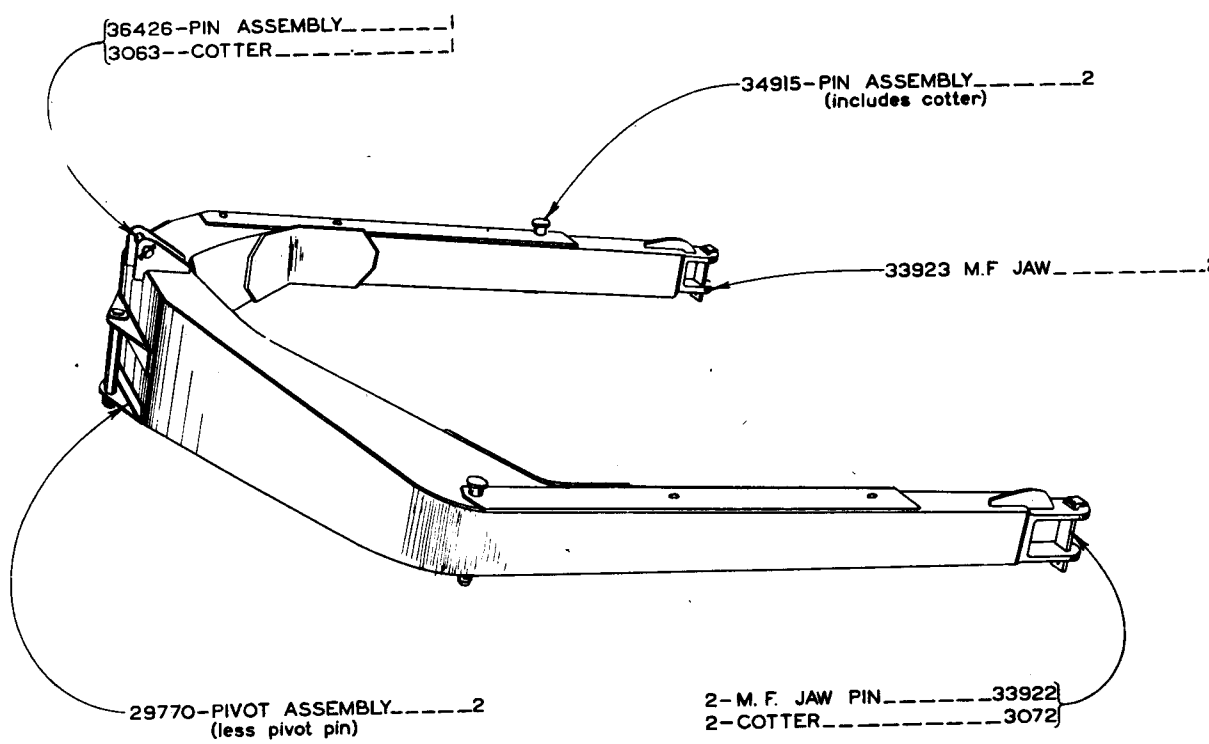
29770-PIVOT ASSEMBLY-----2
(less pivot pin)

2-M. F. JAW PIN-----33922
2-COTTER-----3072

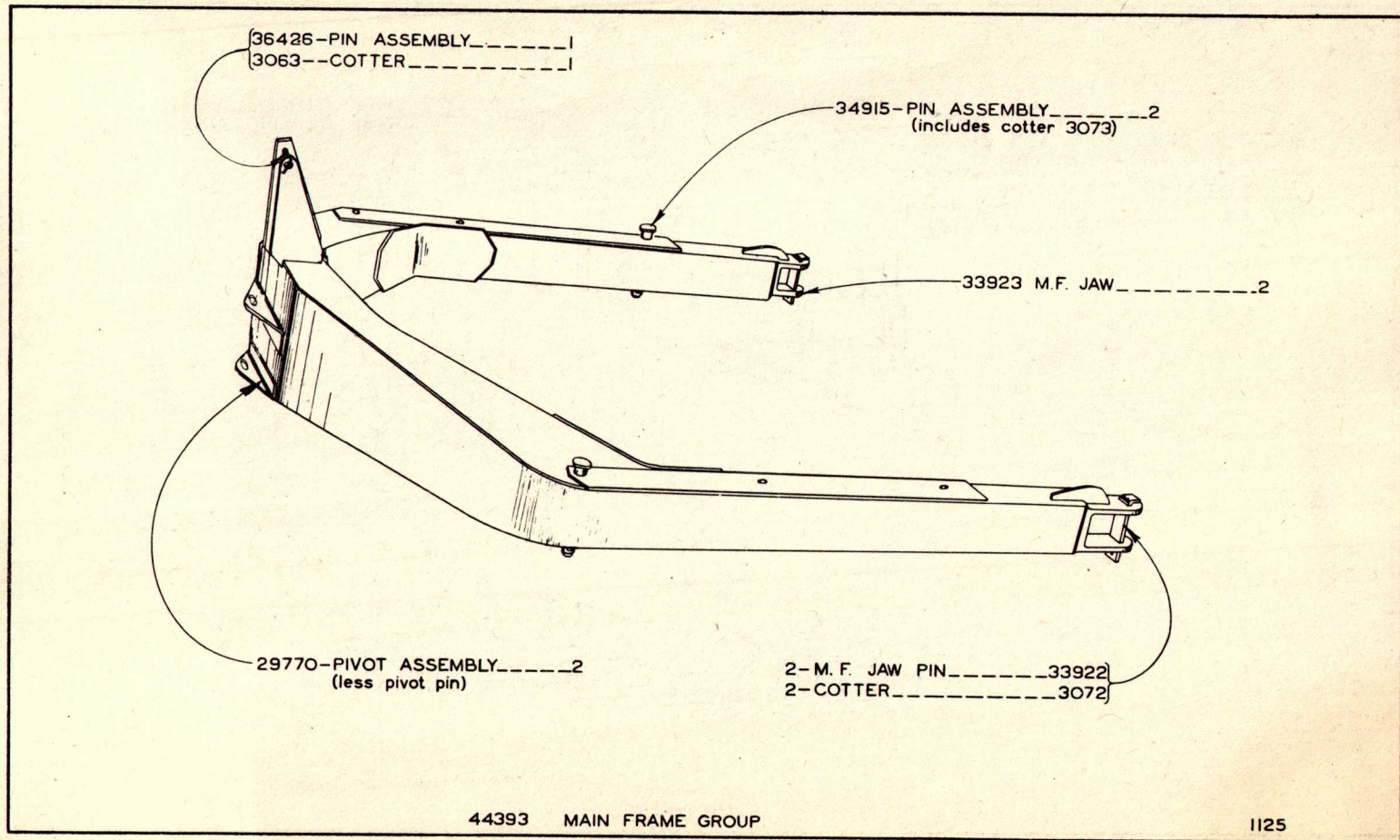
38305 MAIN FRAME GROUP

871

8



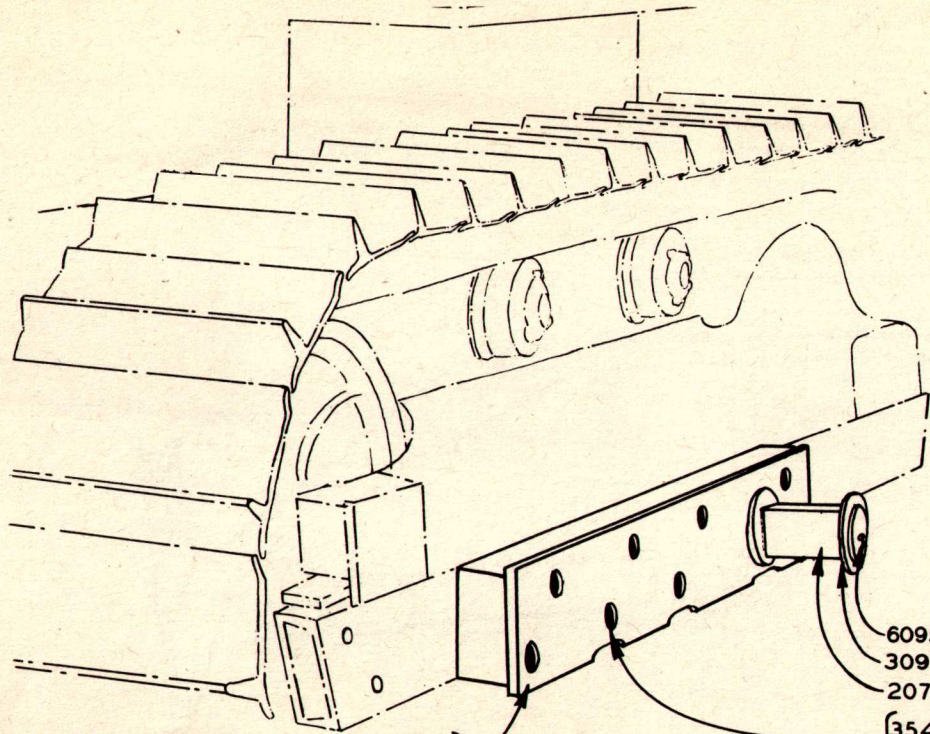
6



MAIN FRAME

R76 — 29 AND UP

10

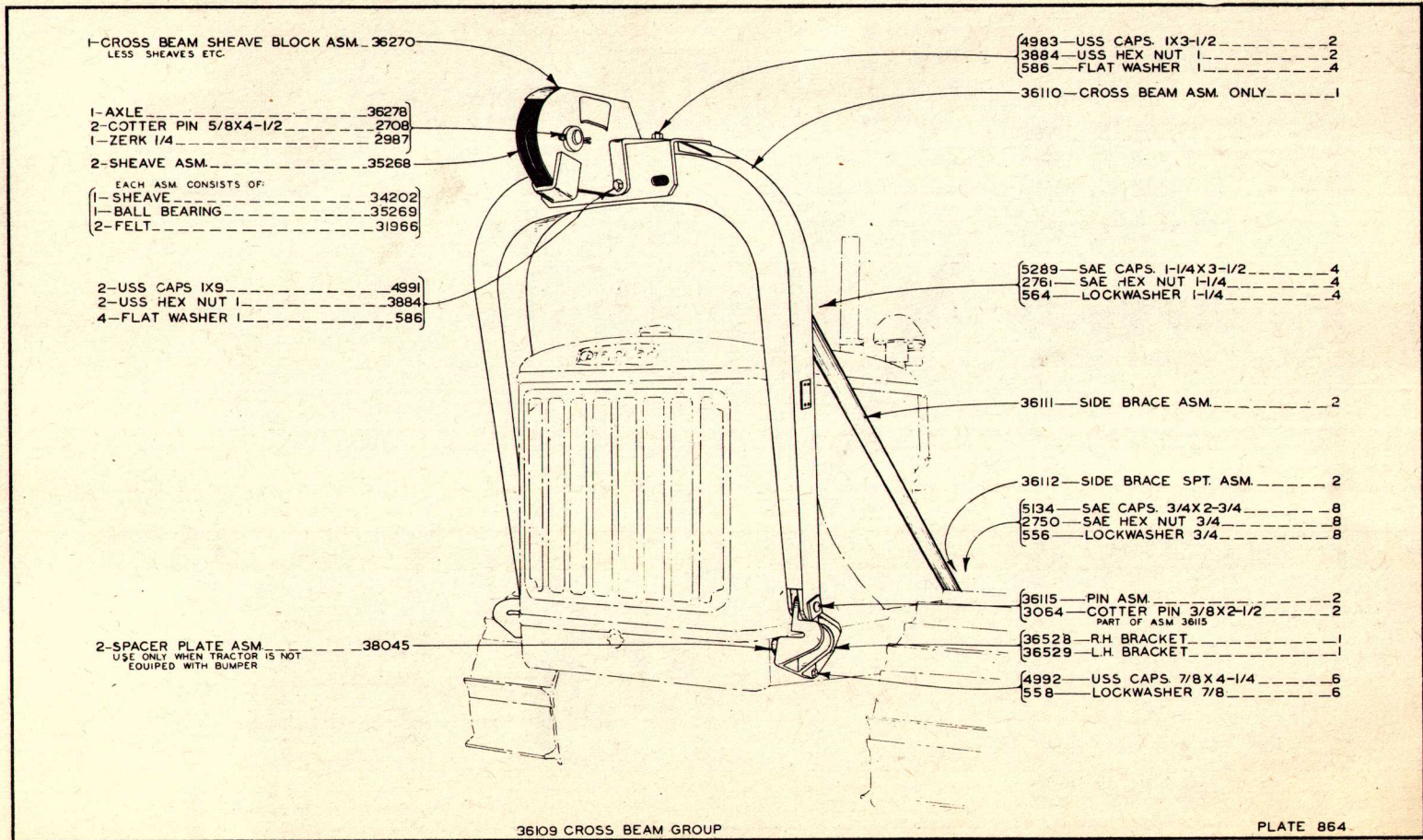


1—R.H. TRACTOR MTG. ASM.-----36511
 1—L.H. TRACTOR MTG. ASM.-----36512

6095—ZERK 1/8 -----2
 30973—WASHER -----2
 (PART OF ASM. 36511 & 36512)
 20734—JAW BEARING -----2
 (PART OF ASM. 36511 & 36512)
 35472—USS CAPS. 7/8X2-1/4 -----16
 558—LOCKWASHER -----16

36510 TRAC. MTG. CHAN. GROUP

PLATE 863



CROSS BEAM

R76 — 1 TO 24, INCL.

CROSS BEAM

R76 — 25 AND UP

1-CROSS BEAM SHEAVE BLOCK ASM_36270 A
LESS SHEAVES ETC

- 1-AXLE ----- 36278
- 2-COTTER PIN 5/8X4-1/2 ----- 2708
- 1-ZERK 1/4 ----- 2987
- 2-SHEAVE ASM. ----- 35268
- EACH ASM CONSISTS OF
- 1-SHEAVE ----- 34202
- 1-BALL BEARING ----- 35269
- 2-FELT ----- 31966

- 2-USS CAPS IX9 ----- 4991
- 2-USS HEX NUT 1 ----- 3884
- 4-FLAT WASHER 1 ----- 586

2-SPACER PLATE ASM ----- 38045
USE ONLY WHEN TRACTOR IS NOT
EQUIPPED WITH BUMPER

- 4983-USS CAPS. IX3-1/2 ----- 2
- 3884-USS HEX NUT 1 ----- 2
- 586-FLAT WASHER 1 ----- 4
- 3610A-CROSS BEAM ASM. ONLY ----- 1

- 5289-SAE CAPS. 1-1/4X3-1/2 ----- 4
- 2761-SAE HEX NUT 1-1/4 ----- 4
- 564-LOCKWASHER 1-1/4 ----- 4

36111-SIDE BRACE ASM. ----- 2

36112-SIDE BRACE SPT. ASM. ----- 2

- 5134-SAE CAPS. 3/4X2-3/4 ----- 8
- 2750-SAE HEX NUT 3/4 ----- 8
- 556-LOCKWASHER 3/4 ----- 8

36115-PIN ASM ----- 2

3064-COTTER PIN 3/8X2-1/2 ----- 2
PART OF ASM 36115

36528-RH BRACKET ----- 1

36529-L.H. BRACKET ----- 1

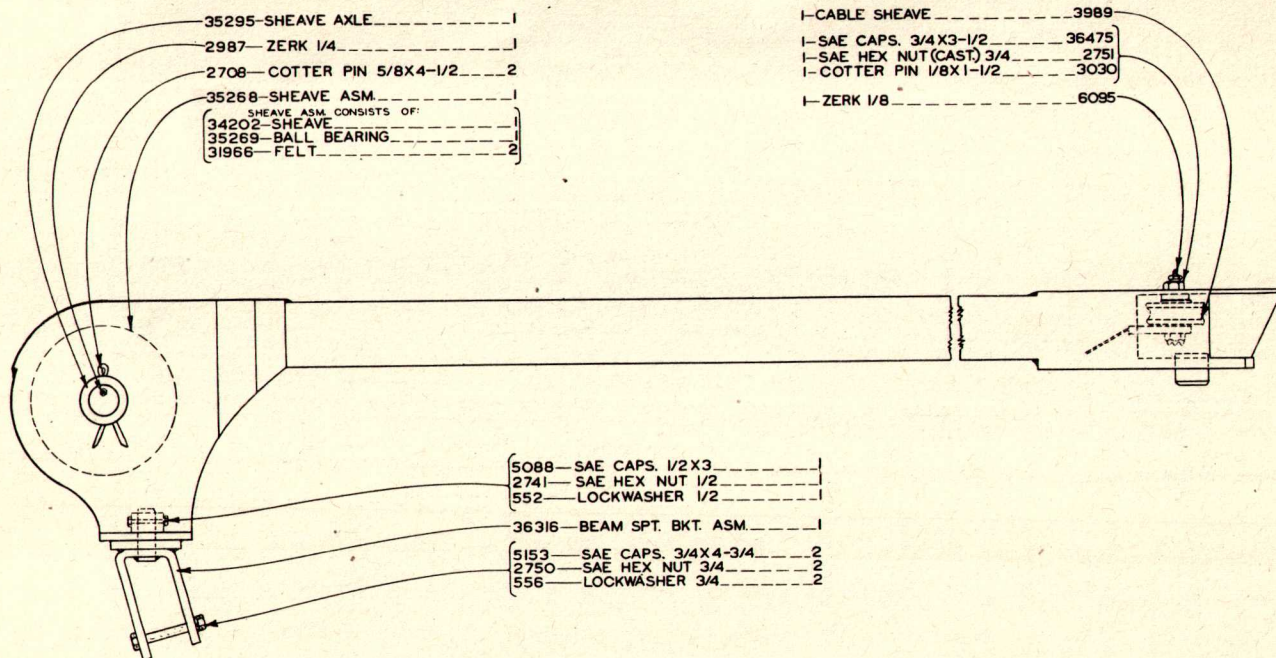
4992-USS CAPS. 7/8 X 4-1/4 ----- 6

558-LOCKWASHER 7/8 ----- 6

3880-USS HEX NUT ----- 6

36109A CROSS BEAM GROUP

PLATE 969



36315 OVERHEAD BEAM GROUP

PLATE 908

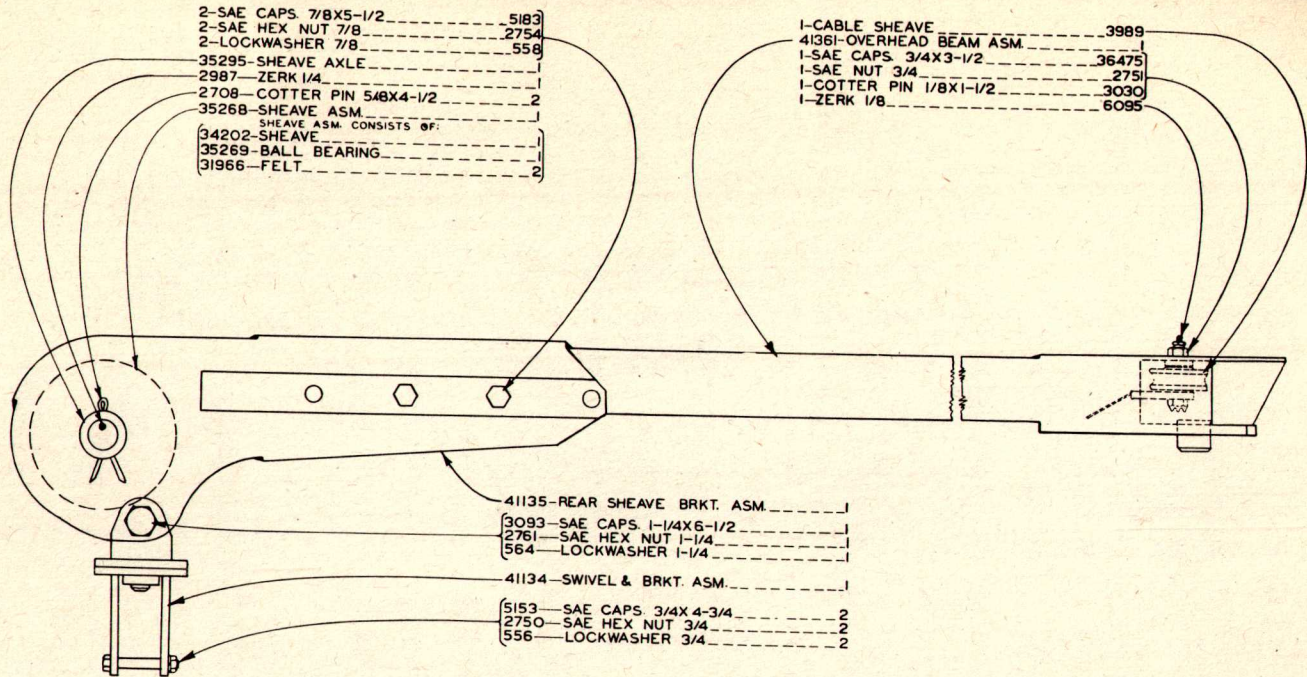
OVERHEAD BEAM

R76 — 1 TO 24, INCL.

OVERHEAD BEAM

R76 — 25 TO 28, INCL.

14



36315B OVERHEAD BEAM GROUP

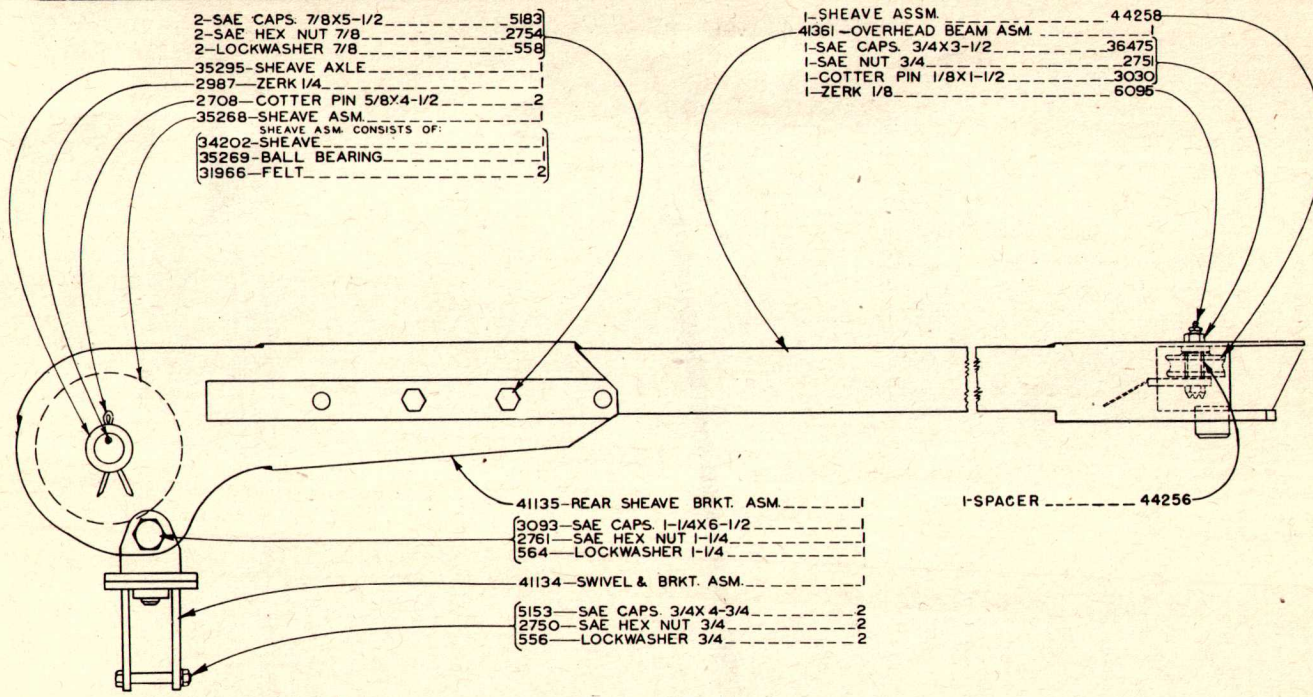
PLATE 869

- 2-SAE CAPS. 7/8X5-1/2 ----- 5183
- 2-SAE HEX NUT 7/8 ----- 2754
- 2-LOCKWASHER 7/8 ----- 558
- 35295-SHEAVE AXLE ----- 1
- 2987-ZERK 1/4 ----- 1
- 2708-COTTER PIN 5/8X4-1/2 ----- 2
- 35268-SHEAVE ASM. ----- 1
- SHEAVE ASM. CONSISTS OF:
- 34202-SHEAVE ----- 1
- 35269-BALL BEARING ----- 1
- 31966-FELT ----- 2

- 1-SHEAVE ASSM. ----- 44258
- 41361-OVERHEAD BEAM ASM. ----- 1
- 1-SAE CAPS. 3/4X3-1/2 ----- 36475
- 1-SAE NUT 3/4 ----- 2751
- 1-COTTER PIN 1/8X1-1/2 ----- 3030
- 1-ZERK 1/8 ----- 6096

- 41135-REAR SHEAVE BRKT. ASM. ----- 1
- 3093-SAE CAPS. 1-1/4X6-1/2 ----- 1
- 2761-SAE HEX NUT 1-1/4 ----- 1
- 564-LOCKWASHER 1-1/4 ----- 1
- 41134-SWIVEL & BRKT. ASM. ----- 1
- 5153-SAE CAPS. 3/4X4-3/4 ----- 2
- 2750-SAE HEX NUT 3/4 ----- 2
- 556-LOCKWASHER 3/4 ----- 2

1-SPACER ----- 44256

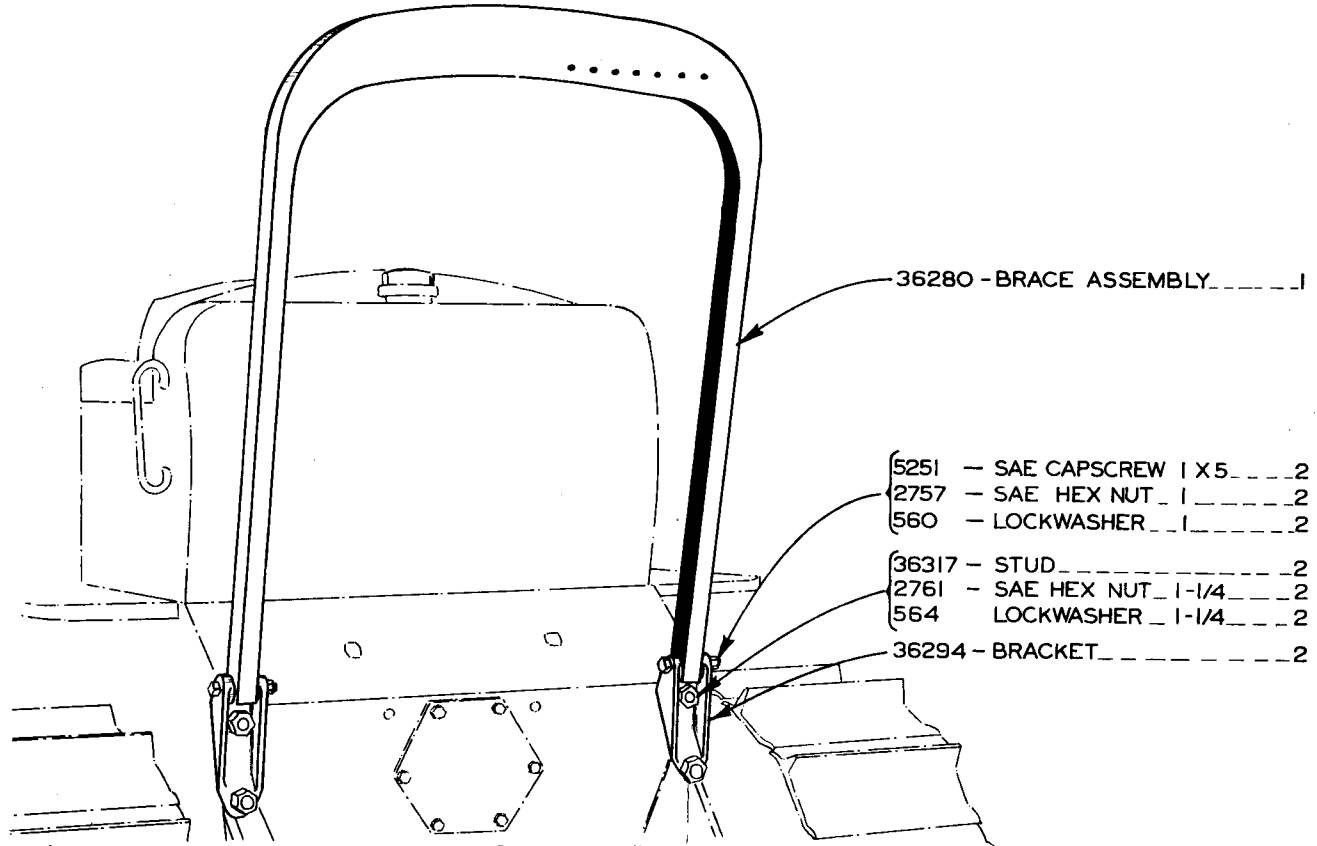


15

OVERHEAD BEAM BRACE

R76 — 1 AND UP

16



(36335)

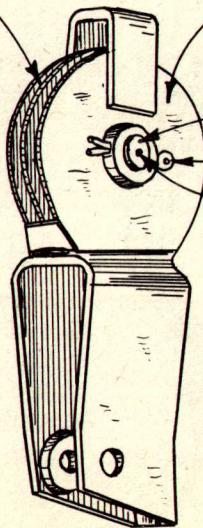
OVERHEAD BEAM BRACE GROUP

P. 844

2—SHEAVE ASM.-----35268

EACH ASM. CONSISTS OF:

[1—SHEAVE-----34202
1—BALL BEARING-----35269
2—FELT-----31966]



36332 —SHEAVE BRKT. ASM.----1

36278—SHEAVE AXLE-----1

2708—COTTER PIN 5/8X4-1/2_2

2987—ZERK 1/4-----1

36334 SHEAVE BRACKET GROUP

P. 967

SHEAVE BRACKET

R76 — 1 TO 28, INCL.

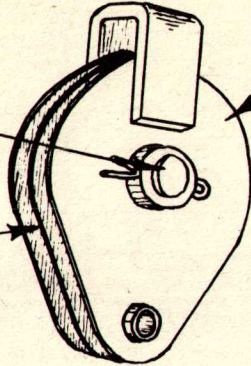
SHEAVE BRACKET

R76 — 29 AND UP

1—SHEAVE BRACKET ASM.——37066
LESS SHEAVES ETC.

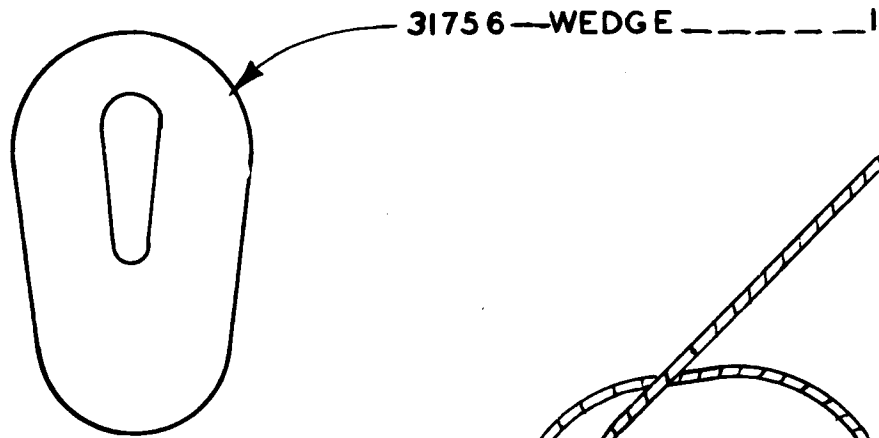
1—AXLE———36278
2—COTTER 5/8X4-1/2——2708
1—ZERK 1/4———2987

2—SHEAVE ASM.———35268
EACH ASM. CONSISTS OF:
1—SHEAVE———34202
1—BALL BEARING——35269
2—FELT———31966



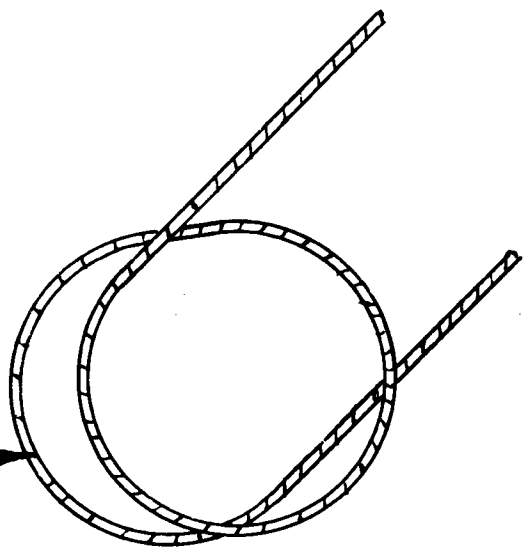
37067 SHEAVE BRACKET GROUP

PLATE 866



31756—WEDGE— — — — — 1

1—CABLE 1/2 (6X19) X 60— — — — — 29859

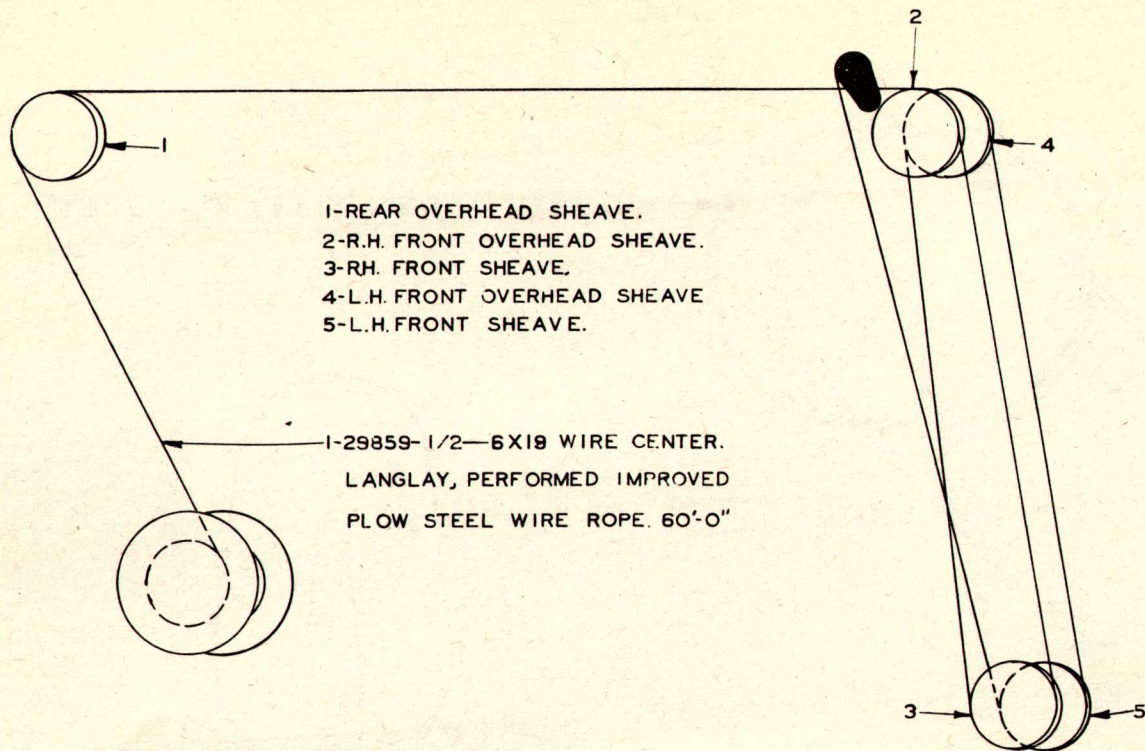


MISC. PARTS

PLATE 867

CABLE AND WEDGE

R76— 1 AND UP



20