

# R71 SIDE-DOZER

## MASTER PARTS CATALOG

TABLE OF CONTENTS	Starting on Page
General Arrangement .....	3
Mounting Instructions .....	5
Numerical Parts List .....	38
Parts Plates:	
Adapter, Pump .....	37
Blade .....	9
Hydraulics, Standard .....	20
Hydraulics, D7 With Cab .....	26
Hydraulics, Combination 'Dozer and Scraper .....	29
Jack .....	18
Jack Bracket and Tractor Mounting .....	16
Lift Arm and Link .....	17
Main Frame .....	9
Pump .....	33
Push Poles .....	9
Runner .....	15
Tank and Base Plate .....	31
Valve .....	32

**LaPLANT  CHOATE**

BREATHER AND FILLER CAP

CONTROL VALVE

RADIATOR GUARD

OIL TANK

PUMP

JACK

BLADE

(Z)

(Z)

AXLE BRG.

MAIN FRAME

PUSH POLE

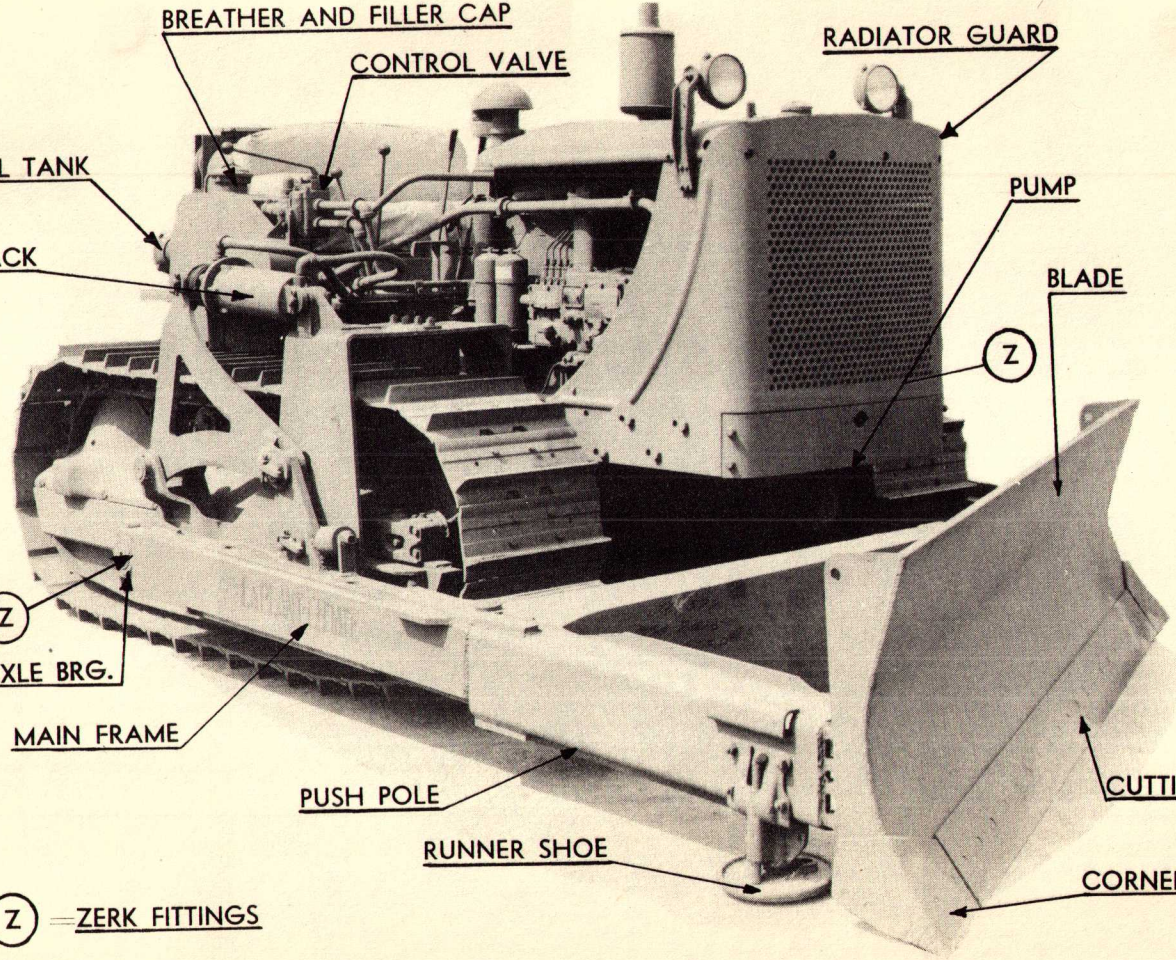
CUTTING EDGE

RUNNER SHOE

CORNER END

(Z) = ZERK FITTINGS

MODEL — R71 — GENERAL ARRANGEMENT



# MOUNTING INSTRUCTIONS

## For R71 SIDE-DOZER

For use with "Caterpillar" D-7 Track Type Tractor

The following instructions should be closely followed to insure satisfactory results in a minimum of time.

### PREPARING TRACTOR PRIOR TO MOUNTING EQUIPMENT

1. Remove front lower radiator bottom plate and bottom plate directly under the fan pulley.
2. Remove crank on front of crankshaft.
3. Remove plugs in both inside and outside track roller frame channels, both tracks.
4. Remove four capscrews, two right hand side and two left hand side, from front face of platform, directly beneath inside edge of each fender. (See piping plate).

### WHEN TRACTOR IS EQUIPPED WITH EXTRAS

1. It is necessary to remove the bumper if tractor is so equipped.
2. It is necessary to remove the crankcase guard if tractor is so equipped.

### TO MOUNT PUMP AND ADAPTER (Refer to Parts Plate 695)

1. Assemble SPECIAL CAPSCREW to front of crankshaft using LOCK PLATE and LOCKING CAPSCREW removed from tractor with crank jaw.
2. Assemble PUMP DRIVE COUPLING FLANGE to inner face of pulley making sure CORK GASKET is in place. Use six  $\frac{5}{8}$ " x  $1\frac{3}{4}$ " SAE Capscrews with Shakeproof Lockwashers and nuts.
3. Drive DOWEL PINS into holes in front engine support.
4. Assemble PUMP ADAPTER into place on DOWEL PINS, making sure the OIL SEAL is in place. Use four  $\frac{5}{8}$ " x  $1\frac{1}{2}$ " SAE Capscrews and Lockwashers.
5. Line up driving lug on PUMP with slot in PUMP DRIVE COUPLING FLANGE and bolt PUMP to ADAPTER using four  $\frac{3}{4}$ " x  $4\frac{1}{2}$ " USS Capscrews and Lockwashers.

## **TO MOUNT TANK, VALVE AND BASE PLATE GROUP AND CROSS PIPING GROUP (Refer to Parts Plate 1403, 1401, 1402 and 1148)**

1. Place **BASE PLATE GROUP** on R. H. Fender, front line of holes in **BASE PLATE** to be  $13\frac{5}{8}$ " from front edge of fender. Inside edge of **BASE PLATE** lines up with inside edge of Fender.

2. Using the **BASE PLATE** as the template, drill  $9/16$ " holes down through the fender for attaching the **BASE PLATE** to the tractor. Fasten **BASE PLATE** down, using four, two front and two rear, outside holes only,  $\frac{1}{2}$ " x  $1\frac{1}{2}$ " SAE Capscrews with Lockwashers and Nuts.

3. Assemble **CROSS PIPING GROUP** to tractor directly behind motor and fasten **PIPING BRACKETS** in place using four, two for each bracket,  $\frac{3}{8}$ " x  $1\frac{1}{4}$ " USS Capscrews with Lockwashers. Do not tighten down until **CROSS PIPES** have been connected to **VALVE**.

4. Place **SUCTION PIPE** in place along inside edge of motor side frame and connect to **TANK**.

5. Screw **POWER HOSE ASSEMBLY** into elbow on **PUMP** and tighten securely.

6. Place **POWER PIPE** in place over **SUCTION PIPE** and connect **POWER HOSE ASSEMBLY** to front end of **POWER PIPE** then connect **POWER PIPE** to **VALVE**.

7. Connect **SUCTION HOSE** to **PUMP**.

8. Assemble **PIPE BRACKET** to top side of bottom motor frame angle. Use hole which is approximately 28" from front edge of fender.

9. Reassemble front lower radiator bottom plate and bottom plate to tractor.

## **TO MOUNT JACK BRACKETS AND TRACTOR MOUNTING GROUP (Refer to Parts Plate 814)**

1. Take apart **CYLINDER BRACKET PLATES** at top center before mounting.

2. Mount **INSIDE CYLINDER BRACKET PLATE ASSEMBLIES** using five  $\frac{7}{8}$ " x 2" USS Capscrews with Lockwashers for each plate.

3. Mount **OUTSIDE CYLINDER BRACKET PLATE ASSEMBLIES** using ten  $\frac{7}{8}$ " x  $2\frac{1}{4}$ " USS Capscrews with Lockwashers for each plate.

4. Bolt **CYLINDER BRACKET PLATES** together at center.

## **TO MOUNT JACK GROUPS**

1. Assemble **JACKS** in place between **CYLINDER BRACKET** and **JACK LEVER ARM** with shaft end of **JACK** to rear.

2. Connect the **HIGH PRESSURE HOSE ASSEMBLIES** from **JACK** to

**CROSS PIPING.** Base end of JACK connects to top pipe and head end of JACK connects to bottom pipe.

## TO MOUNT MAIN FRAME AND BLADE GROUP

1. Fill OIL TANK with SAE 20 in winter, SAE 40 in summer, asphalt base motor oil. Start tractor, and with PUMP in gear, operate VALVE several times to fill all lines. Check oil level and fill TANK to within 5" or 6" of the top.

2. Block rear of MAIN FRAME to proper height, remove JAW PINS and drive tractor into place. Drop JAW PINS in place and secure with COTTER PINS.

3. Connect rear of MAIN FRAME to TRACTOR MOUNTING and LIFT LINKS to MAIN FRAME.

## CARE OF THE EQUIPMENT

This unit is completely equipped with greasing facilities at all wear points. In addition, all wear points are equipped with replaceable bushings and pins.

For satisfactory performance and long life we recommend greasing this unit once each working day. Use standard pressure gun grease, semi-fluid, heavy in summer and medium in winter.

**PUMP** — All rear pumps are equipped with a solid plug in the drain port. This is to prevent oil from draining out of the transmission case should the gasket and coupling seal become worn and leak.

Fill the clutch housing of the pump with one pint of SAE 90 gear oil and check level each 50 hours of operation.

**OIL TANK** — Check the oil level in the oil tank each time you grease the machine. Keep the oil within 5 or 6 inches of the top. Use only good, clean oil, SAE 20 in winter, SAE 40 in summer, asphalt base oil preferred. If the oil level drops and air can get into the lines, it causes the oil to foam and come out of the breather.

Filling the tank too full causes the oil to come out of the breather when the valve is placed in float position with the blade raised. In float position oil rushes into the tank from one end of the jack and is not forced into the other end.

**FILTER** — Remove the filter in the oil tank and wash in gasoline once each week of operation. Keeping the oil clean and free of abrasives will assure trouble-free service.

**VALVE** — Keep the valve core seated properly in the valve body. Valve cores should work freely at all times. If valve core is too loose it will not hold pressure. Setscrew at the bottom of the body directly beneath core should be backed out till core binds and then tighten only enough to allow core to work freely. Lock setscrew with jaw nut.

- 2-PIN.....20753
- 2-COTTER PIN 3/8X2".....3062
- 2-LOCK.....33785
- 1-BLADE GROUP.....33854
- 1-PIN ASSEMBLY.....29769  
(INCLUDES COTTER PIN)

- 34938-LOCK.....2
- 34935-PIN.....2
- 3062-COTTER PIN 3/8X2".....2

- 33923-JAW.....2
- 33922-PIN.....2
- 3072-COTTER PIN 1/2X2".....2
- 20028-ROLLER.....2
- 20143-PIN.....2
- 34373-PIN ASSEMBLY.....2
- 3074-COTTER PIN 1/2X3".....2

- 1-CUTTING EDGE.....19070  
(NOT SHOWN)
- 20-PLOWBOLT.....2668  
(3/8X2" 3HD.)

- 1-R.H. BLADE CORNER END.....20729
- 1-L.H. BLADE CORNER END.....20730
- 4-PLOWBOLT 5/8X2" 3HD.....2668  
(FRONT)
- 4-PLOWBOLT 5/8X1-3/4" 3HD.....2624  
(SIDE)

- 36225-RUNNER GROUP.....2  
(LESS PUSH POLE)
- 32905-PIN.....2
- 2644-PLOWBOLT 5/8X2-1/2" 3HD.....8
- 554-LOCKWASHER 5/8".....8
- 32904-RUNNER ASSEM.....2
- 34944-PUSH POLE JAW.....2

- 33900-MAIN FRAME GROUP.....1
- 34915-PIN ASSEMBLY.....2  
(INCLUDES COTTER PIN)
- 5267-SAE CAPSCREW 1X3-1/2".....2
- 2757-SAE HEX NUT 1".....2
- 560-LOCKWASHER 1".....2
- 34951-R.H. PUSH POLE ASM.....1  
(LESS RUNNER GROUP)
- 34952-L.H. PUSH POLE ASM.....1  
(LESS RUNNER GROUP)
- 34955-R.H. BRACE ASM.....1
- 34956-L.H. BRACE ASM.....1

R-71 TRAILBUILDER

MAIN FRAME, BLADE, & PUSH POLES

PLATE NO. 690

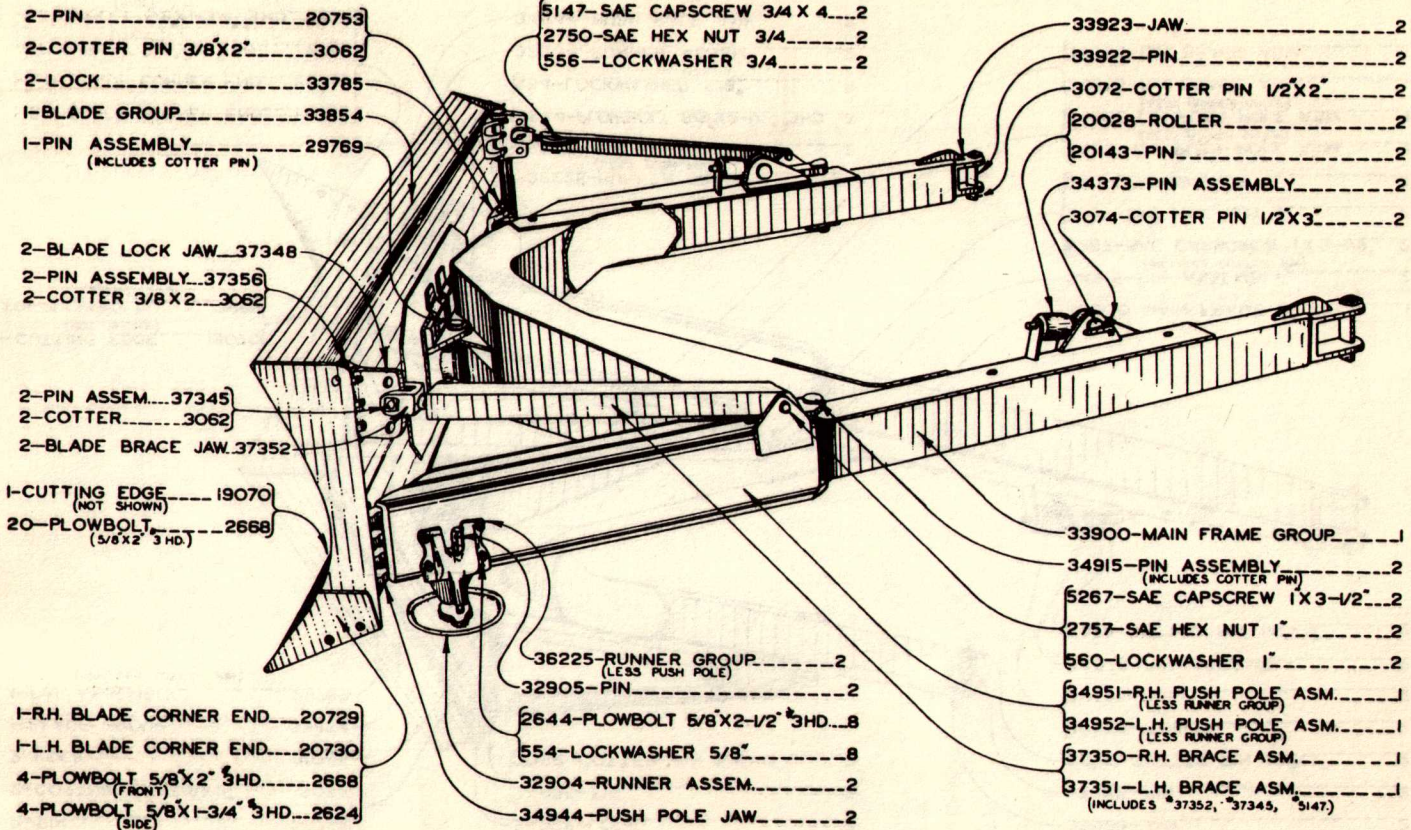
MAIN FRAME, BLADE, PUSH POLES

R71 — 1 TO 96, INCL.

# MAIN FRAME, BLADE, PUSH POLES

R71 — 97 TO 142, INCL.

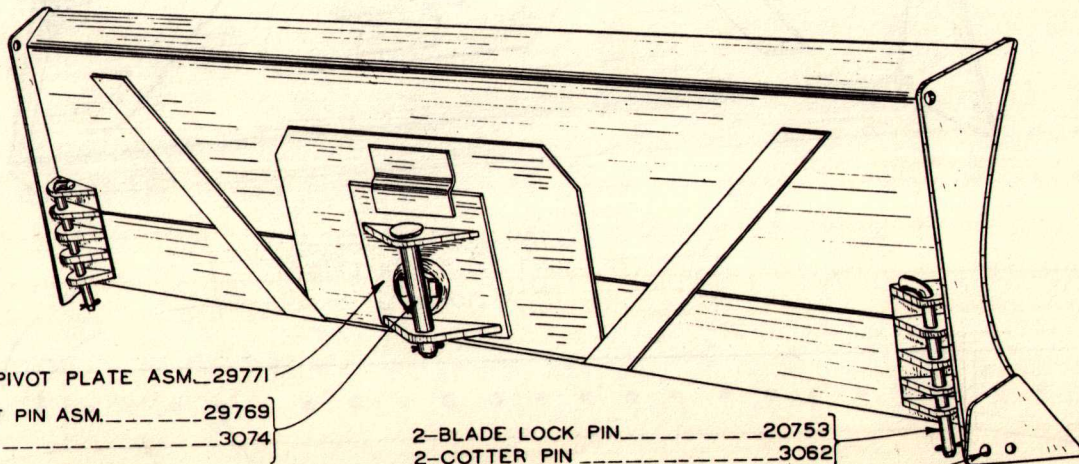
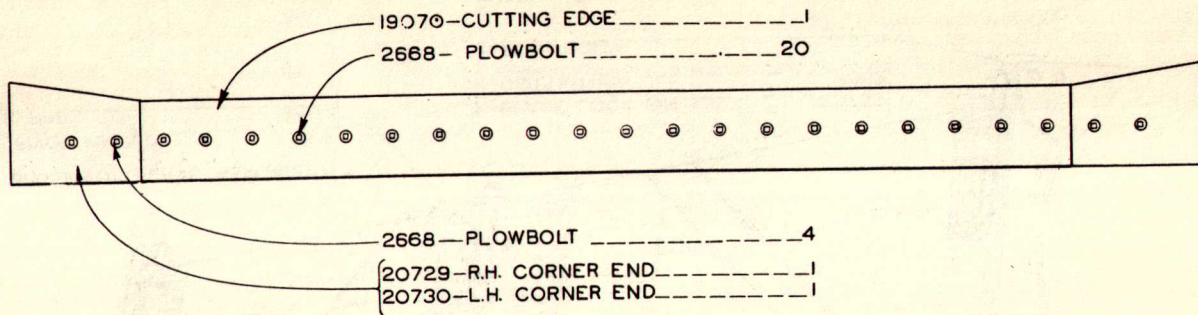
10



R-71 TRAILBUILDER

MAIN FRAME, BLADE, & PUSH POLES

PLATE NO. 718



- 1- OUTER BRG. PIVOT PLATE ASM. 29771
- 1- BLADE PIVOT PIN ASM. 29769
- 1- COTTER PIN 3074

- 2- BLADE LOCK PIN 20753
- 2- COTTER PIN 3062
- 4- PLOWBOLT 2624

38161 BLADE GROUP

PLATE 929

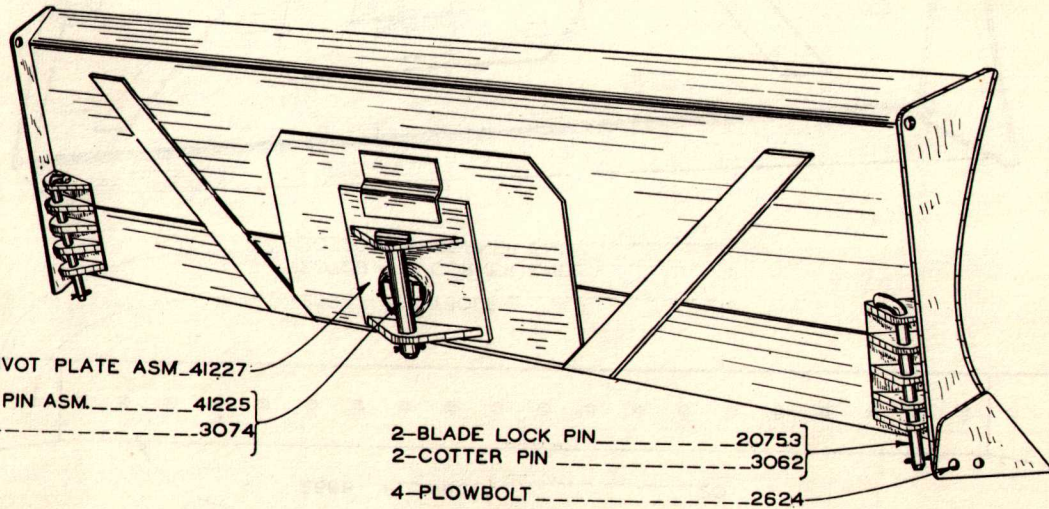
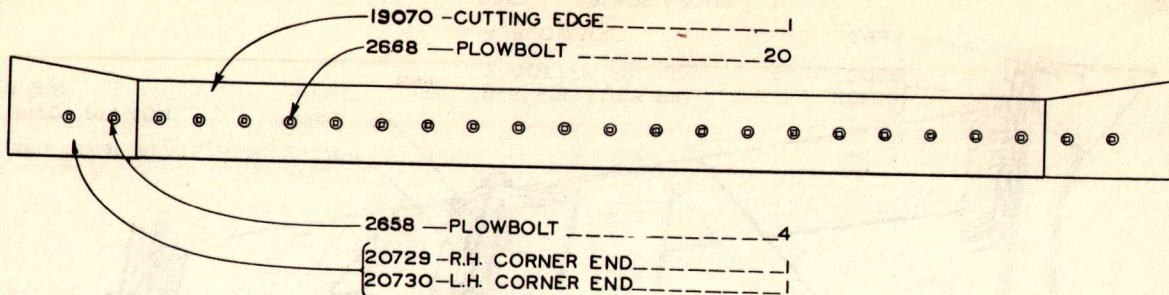
BLADE

R71 - 1 TO 417, INCL.



BLADE

R71 — 418 AND UP

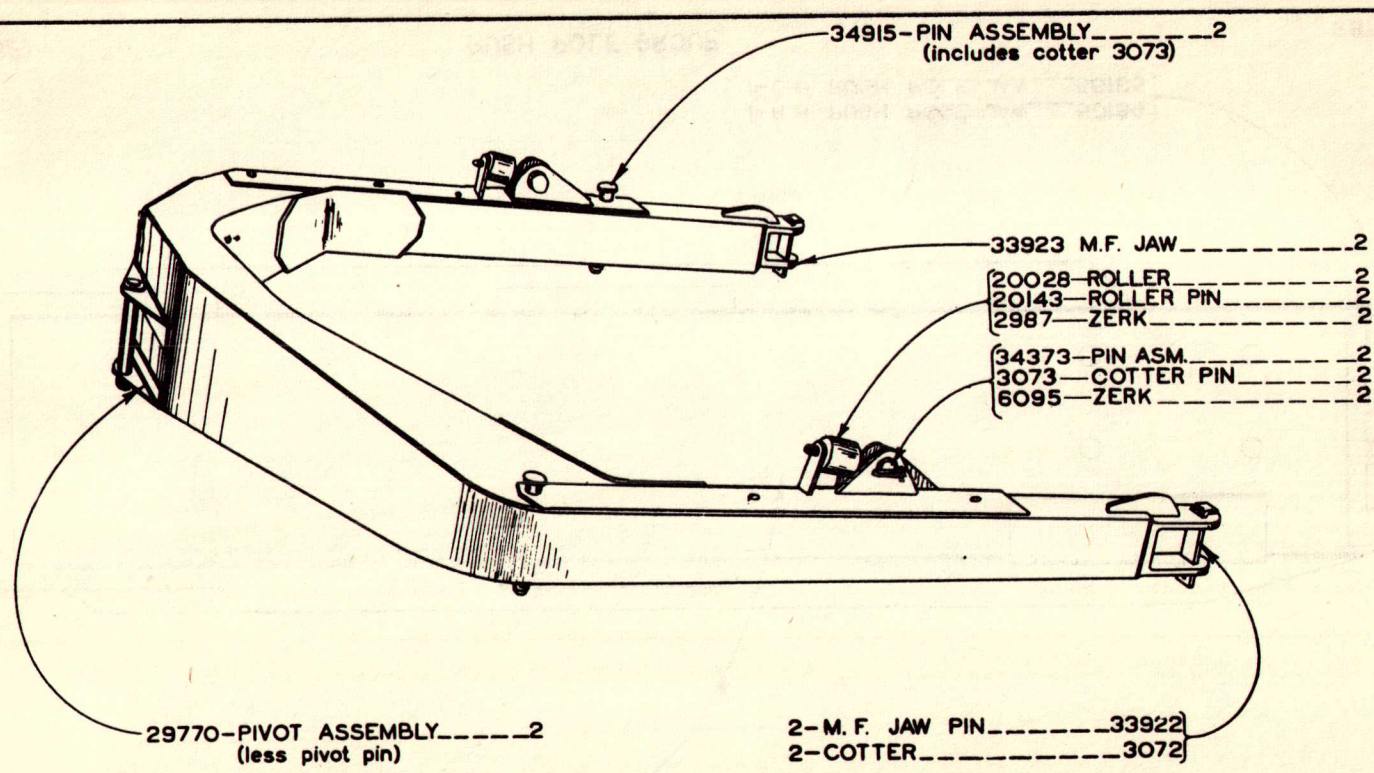


38161 A BLADE GROUP

1215

12

13



38160 MAIN FRAME GROUP

992

MAIN FRAME

R71 - 1 AND UP

PUSH POLES

R71 — I AND UP

I-R.H. PUSH POLE ASSEMBLY...38238 }  
I-L.H. PUSH POLE ASSEMBLY...38239 }

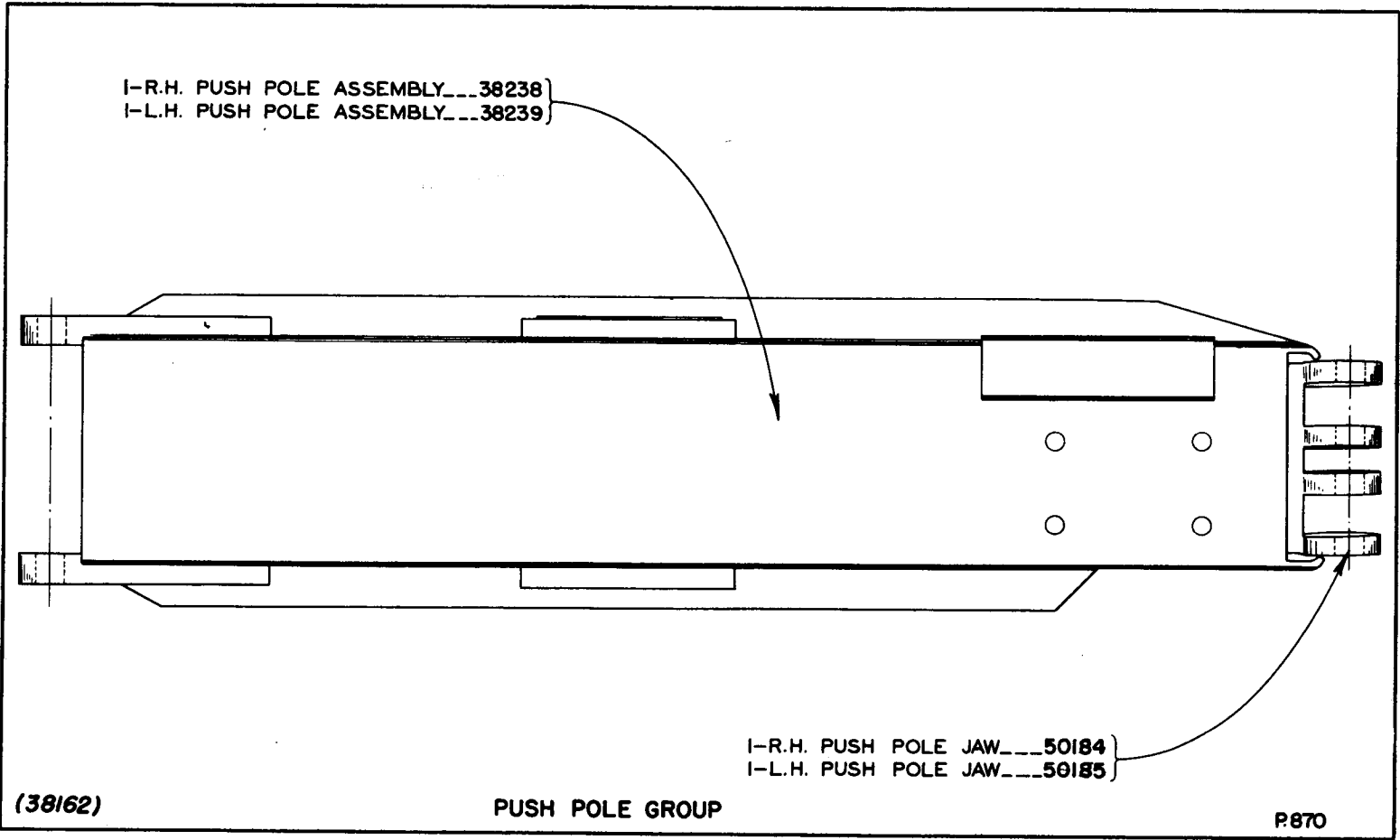
14

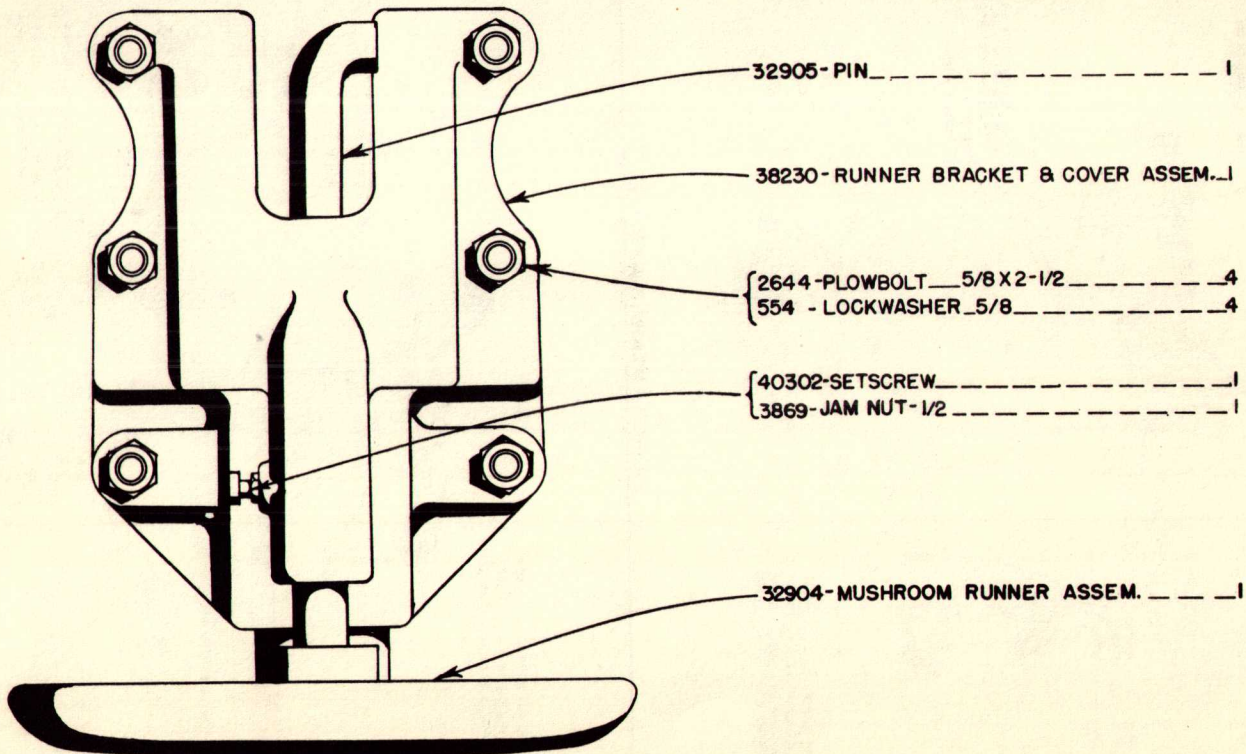
I-R.H. PUSH POLE JAW...50184 }  
I-L.H. PUSH POLE JAW...50185 }

(38162)

PUSH POLE GROUP

P870





36225 RUNNER GROUP (TWO REQUIRED PER MACHINE)

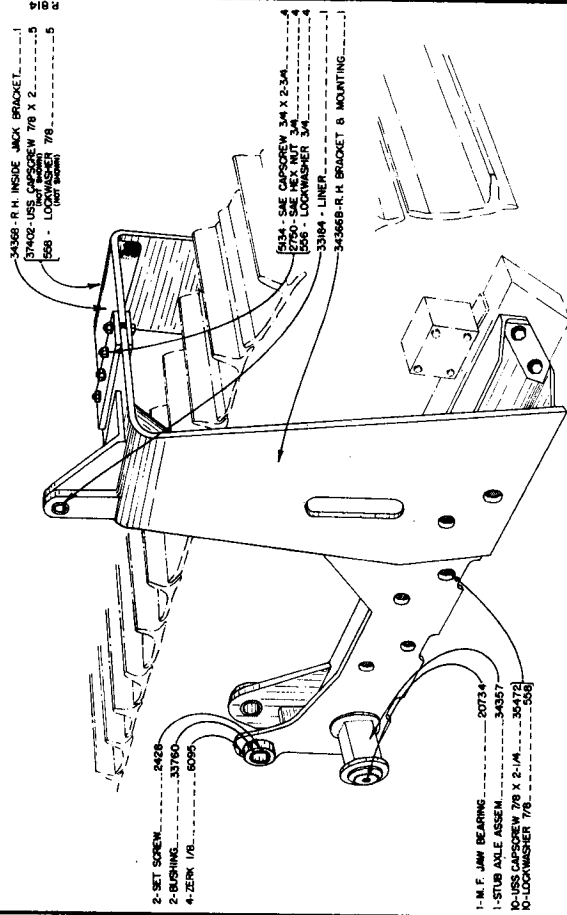
P.868

15

RUNNER

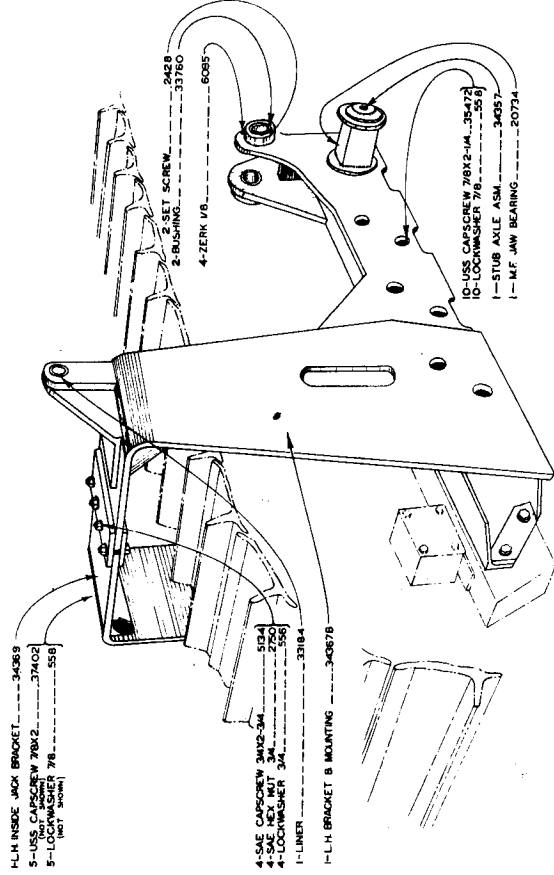
R71 — 1 AND UP

JACK BRACKET, TRACTOR MOUNTING R71 - 1 AND UP



(343798)

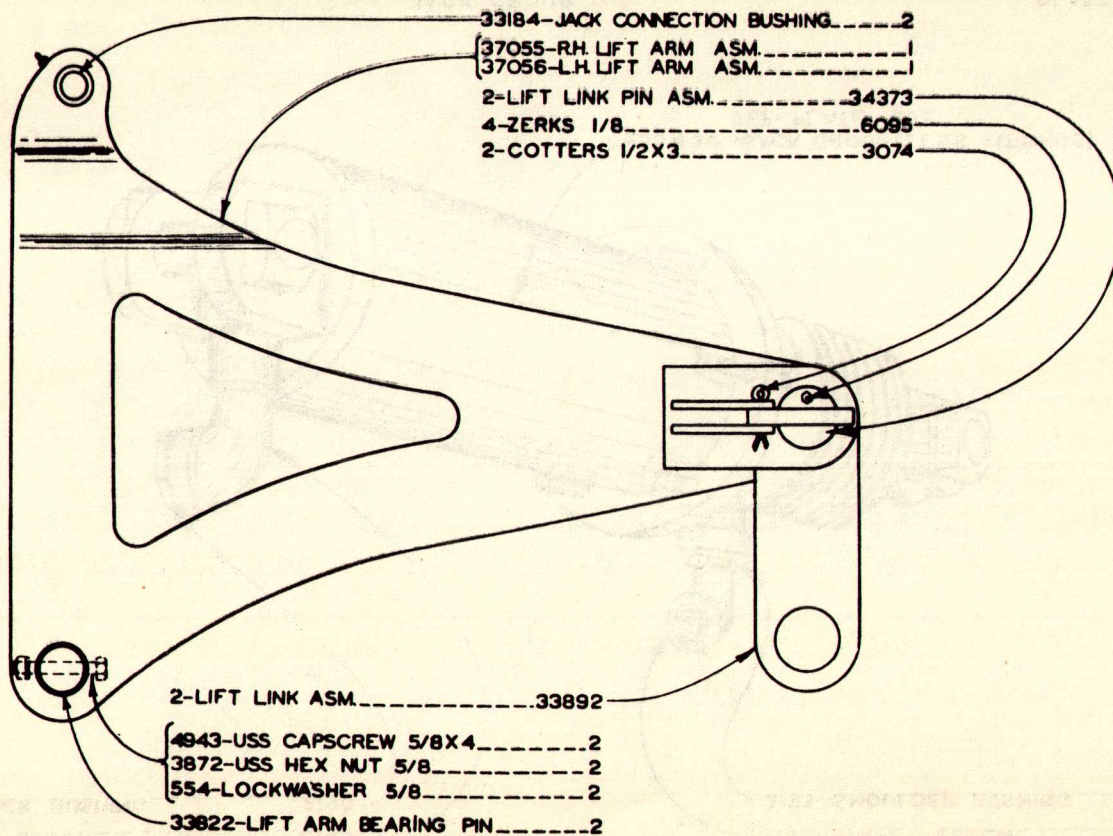
R.H. TRACTOR MOUNTING & JACK BRACKET



(343798)

L.H. TRACTOR MOUNTING & JACK BRACKET

PLATE B14



34372A LIFT ARM &amp; LINK GROUP

905

LIFT ARM, LINK

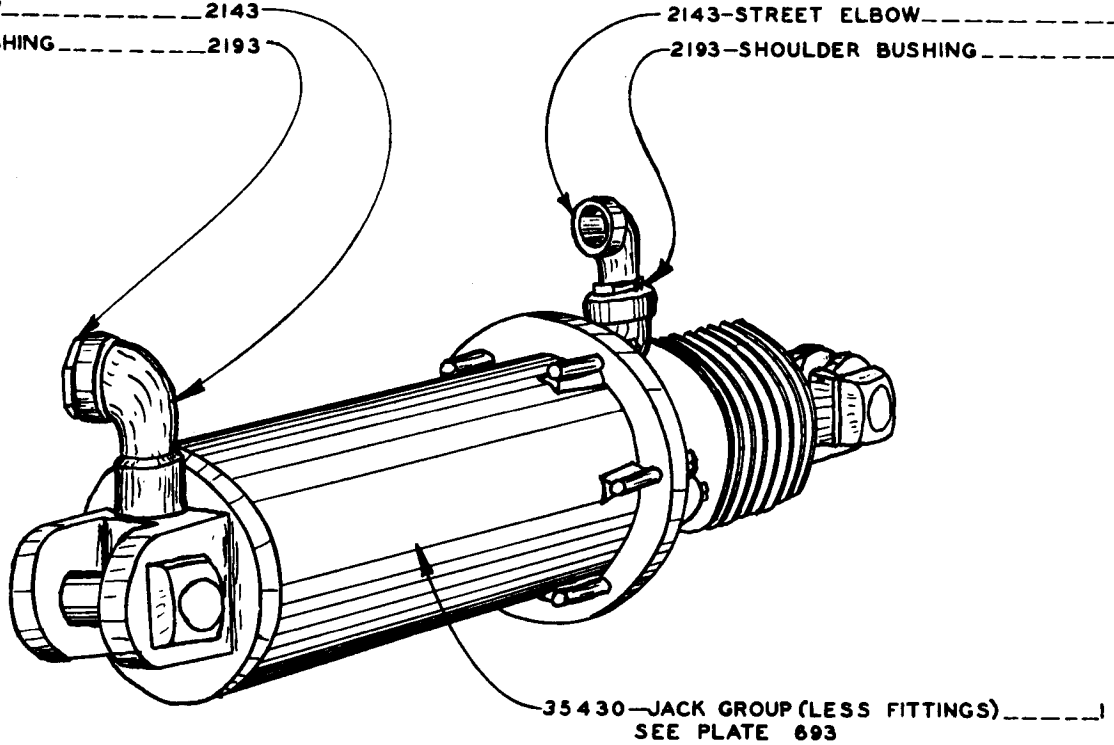
R71 — 1 AND UP

JACK

R71 — 1 AND UP

1-STREET ELBOW.....2143  
1-SHOULDER BUSHING.....2193

2143-STREET ELBOW.....|  
2193-SHOULDER BUSHING.....|

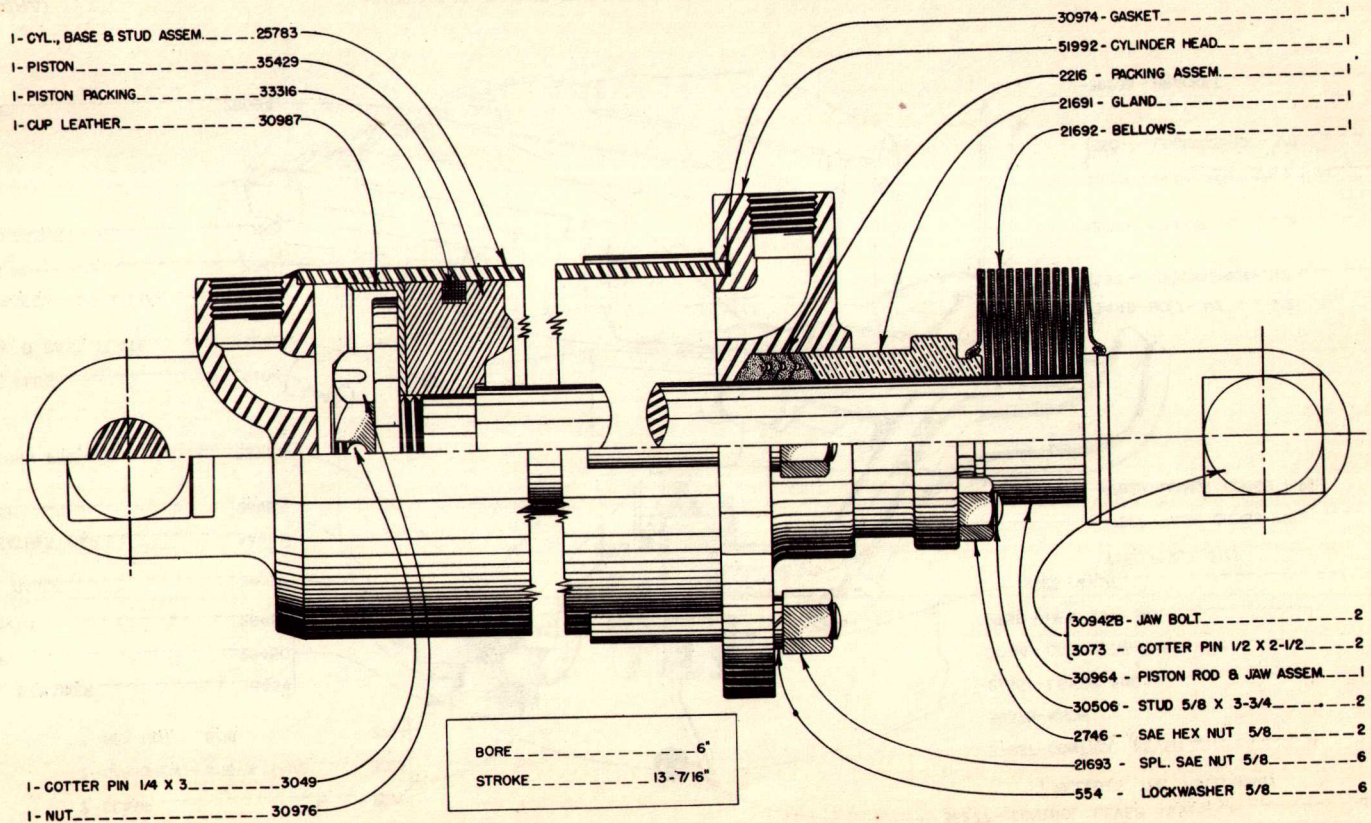


18

(36413)

JACK GROUP

PLATE 1062



35430A - JACK GROUP COMPLETE (TWO GROUPS REQUIRED PER MACHINE)

693



# HYDRAULICS

R71 — 1 TO 221, INCL.

20

- 1-L. P. HOSE — 1-1/2 X 4-1/2 .....1981
- 2-CLAMP.....2970
- 2-CAPSCREW — 5/16 X 1-1/2 .....3022
- 2 HEX NUT 5/16 .....2744

- 1-OIL STRAINER .....26454
- 1-CAP .....26450
- 1-GASKET .....26466
- 1-OIL GAUGE.....34977
- 1-BREATHER CAP.....34971
- 1-MESH.....26453
- 1-RETURN PIPE.....33721

- 1-PIPE PLUG.....2104
- 1-TANK & BASE PLATE.....36232

- 4-CAPSCREW — 1/2 X 1-1/2 .....5074
- 4-HEX NUT — 1/2 .....2741
- 4-LOCKWASHER — 1/2 .....552

- 4-HOSE.....28594

- 36277 — CONTROL LEVER ASSEMBLY.....1  
(INCLUDES THE FOLLOWING)

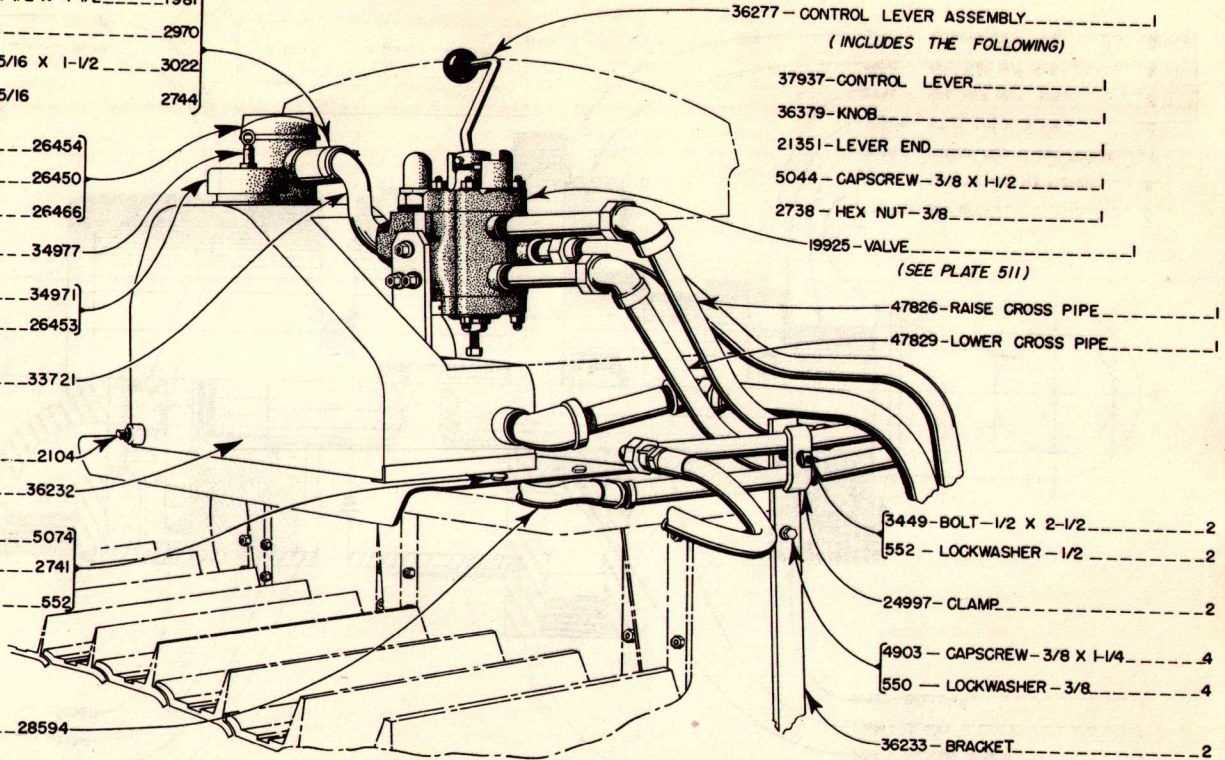
- 37937-CONTROL LEVER.....1
- 36379-KNOB.....1
- 21351-LEVER END.....1
- 5044 — CAPSCREW — 3/8 X 1-1/2.....1
- 2738 — HEX NUT — 3/8.....1

- 19925 — VALVE.....1  
(SEE PLATE 511)

- 47826-RAISE CROSS PIPE.....1
- 47829-LOWER CROSS PIPE.....1

- 3449-BOLT-1/2 X 2-1/2.....2
- 552 — LOCKWASHER — 1/2.....2
- 24997-CLAMP.....2
- 4903 — CAPSCREW — 3/8 X 1-1/4.....4
- 550 — LOCKWASHER — 3/8.....4

- 36233 — BRACKET.....2



(36248A)

HYDRAULIC GROUP FOR CATERPILLAR TRACTOR, NEW D7

- 1- L.P HOSE 1-1/2 X 4-1/2 1981
- 2- HOSE CLAMP 2970
- 2- SAE CAPSCREW 3022
- 2- SAE HEX NUT 2744

1- TANK & BASE PL. ASSM. 38880  
(LESS VALVE)  
SEE PLATE 1148

36277-CONTROL LEVER ASSEMBLY 1  
(INCLUDES THE FOLLOWING)

- 37937-CONTROL LEVER 1
- 36379-KNOB 1
- 21351-LEVER END 1
- 5044-CAPSCREW 3/8 X 1-1/2 1
- 2738-HEX NUT 3/8 1

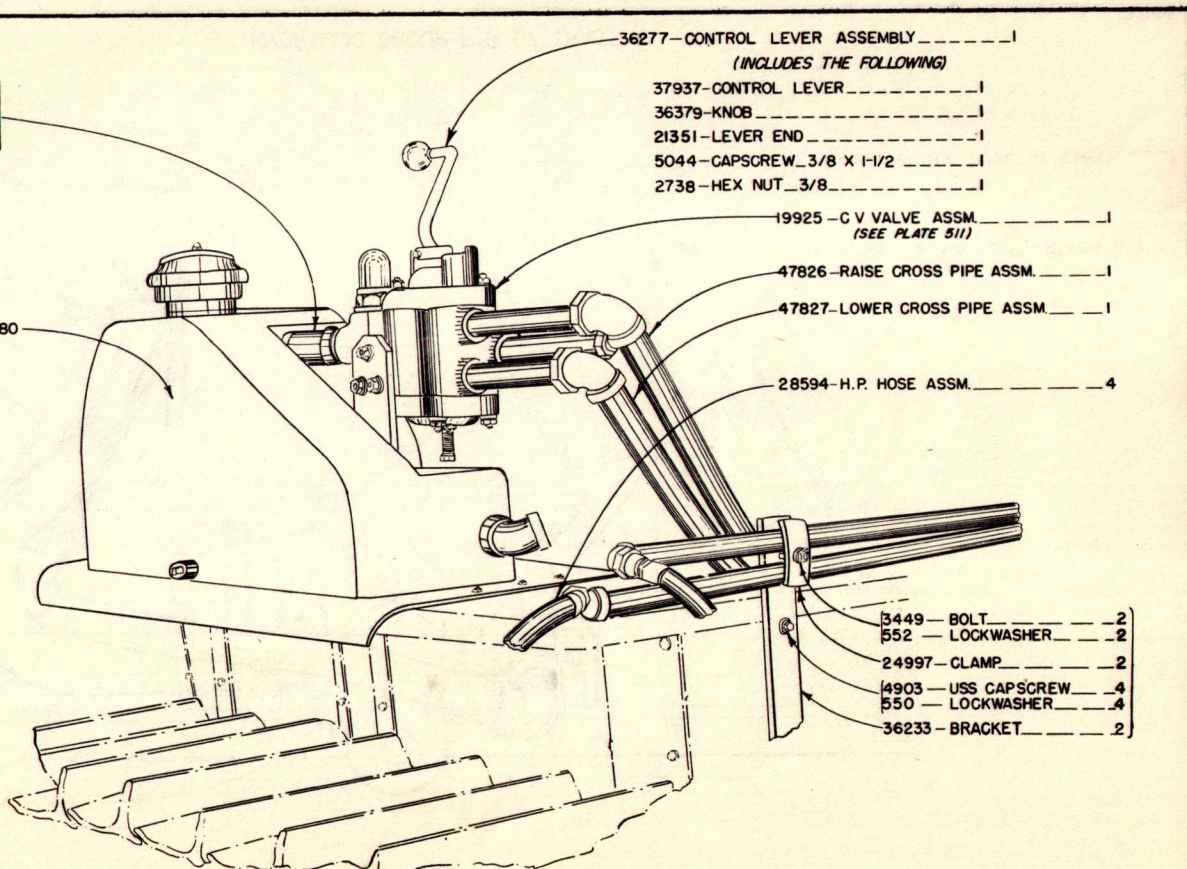
19925-C V VALVE ASSM. 1  
(SEE PLATE 511)

47826-RAISE CROSS PIPE ASSM. 1

47827-LOWER CROSS PIPE ASSM. 1

28594-H.P. HOSE ASSM. 4

- 3449-BOLT 2
- 552-LOCKWASHER 2
- 24997-CLAMP 2
- 4903-USS CAPSCREW 4
- 550-LOCKWASHER 4
- 36233-BRACKET 2



(36248F)

HYDRAULIC GROUP FOR NEW D7  
R71 - 222 AND UP

P.1402

HYDRAULICS

SEE PUMP PLATES

1—L.P. HOSE ..... 6962  
 2—CLAMP ..... 2970  
 2—SAE CAPSCREW ..... 3022  
 2—SAE HEX NUT ..... 2744

1—POWER PIPE ASSEM. .... 37545

1—SUCTION PIPE ..... 37549

1—SAE CAPSCREW ..... 5098  
 1—SAE HEX NUT ..... 2746  
 1—LOCKWASHER ..... 554

1—CLAMP ..... 36371

1—BRACKET ..... 36235

1—MACHINE BOLT ..... 3457

FRONT PUMP ADAPTER FOR D-7  
SEE PLATE 695

27678—H.P. HOSE ASSEMBLY.....1

(36248B &amp; 41366A)

HYDRAULIC GROUP FOR D7 TRACTOR

P 945

1 - L.P. HOSE	3004
2 - CLAMP	2970
2 - CAPSCREW_5/16 X 1-1/2	3022
2 - HEX NUT_5/16	2744
1 - POWER PIPE	37545
1 - SUCTION PIPE	43687
1 - CAPSCREW_5/8 X 1-1/2	5098
1 - HEX NUT_5/8	2746
1 - LOCKWASHER_5/8	554
1 - CLAMP	36371
1 - BRACKET	36235
1 - MACHINE BOLT_1/2 X 3	3457
( 36248D & 41366C )	

FRONT PUMP ADAPTER FOR D-7  
(SEE PLATE 695)

1 - PUMP.....SEE PUMP PLATES

27678 - H.P. HOSE.....1

HYDRAULIC GROUP FOR D7 TRACTOR

R71 — 339 TO 853, INCL.

P.1171

- 1-U BOLT \_\_\_\_\_ 47078
- 2-USS NUT \_\_\_\_\_ 3863
- 2-LOCKWASHER \_\_\_\_\_ 550  
(PART OF GROUP 47043)

1-BRACE \_\_\_\_\_ 47060

1-UNION \_\_\_\_\_ 47524

1-POWER PIPE \_\_\_\_\_ 47051

- 1-U BOLT \_\_\_\_\_ 40561
- 2-USS NUT \_\_\_\_\_ 3867
- 2-LOCKWASHER \_\_\_\_\_ 552  
(PART OF GROUP 47041)

1-BRKT GROUP \_\_\_\_\_ 47041

1-BRKT ASSEM \_\_\_\_\_ 47058  
(PART OF GROUP 47041)

- 2-BOLT \_\_\_\_\_ 4911
- 2-USS NUT \_\_\_\_\_ 3867
- 2-LOCKWASHER \_\_\_\_\_ 552  
(PART OF GROUP 47041)

- 2-1 BOLT \_\_\_\_\_ 27692
- 2-HEX NUT \_\_\_\_\_ 3867
- 2-CAPSCREW \_\_\_\_\_ 4904
- 2-LOCKWASHER \_\_\_\_\_ 550
- 2-FLATWASHER \_\_\_\_\_ 576  
(PART OF GROUPS 47086 & 47087)

1-LH CROSS PIPE BRKT GROUP \_\_\_\_\_ 47087

1-RH CROSS PIPE BRKT GROUP \_\_\_\_\_ 47086

47043-BRACE GROUP \_\_\_\_\_ 1

- 20453-U BOLT \_\_\_\_\_ 1
- 3867-USS NUT \_\_\_\_\_ 2
- 552-LOCKWASHER \_\_\_\_\_ 2  
(PART OF GROUP 47043)

47049-SUCTION PIPE \_\_\_\_\_ 1

47525-UNION \_\_\_\_\_ 1

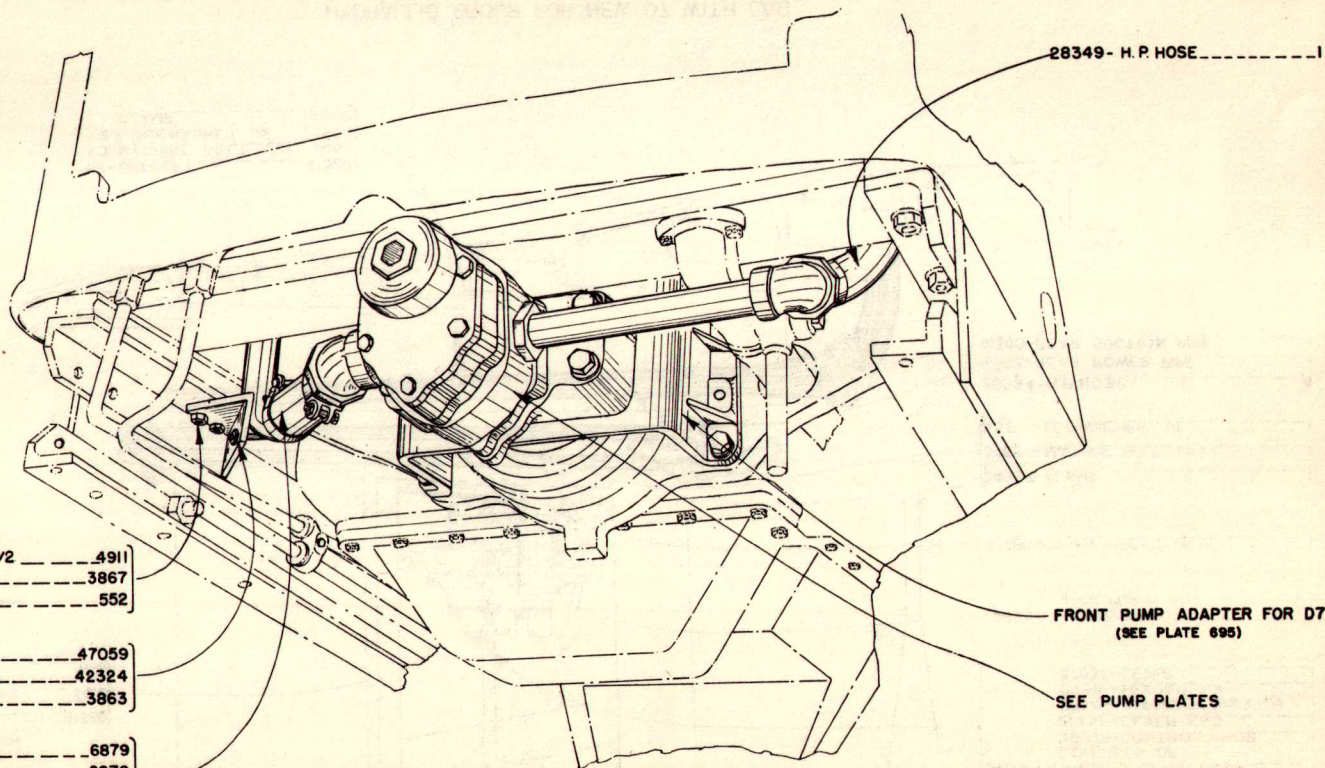
47048-SUCTION PIPE \_\_\_\_\_ 1

47050-POWER PIPE \_\_\_\_\_ 1

47504-UNION ELBOW \_\_\_\_\_ 1

(36248F)

HYDRAULIC GROUP FOR NEW D7



28349- H. P. HOSE ----- 1

FRONT PUMP ADAPTER FOR D7  
(SEE PLATE 695)

SEE PUMP PLATES

- 2-CAPSCREW\_1/2 X 1/2 ----- 4911
- 2-HEX NUT\_1/2 ----- 3867
- 2-LOCKWASHER\_1/2 ----- 552
  
- 1-BRACKET ----- 47059
- 1-J BOLT\_3/8 ----- 42324
- 1-HEX NUT\_3/8 ----- 3863
  
- 1-L.P. HOSE ----- 6879
- 2-CLAMP ----- 2970
- 2-CAPSCREW\_5/16 X 1-1/2 ----- 3022
- 2-HEX NUT\_5/16 ----- 2744

25

(36248F)

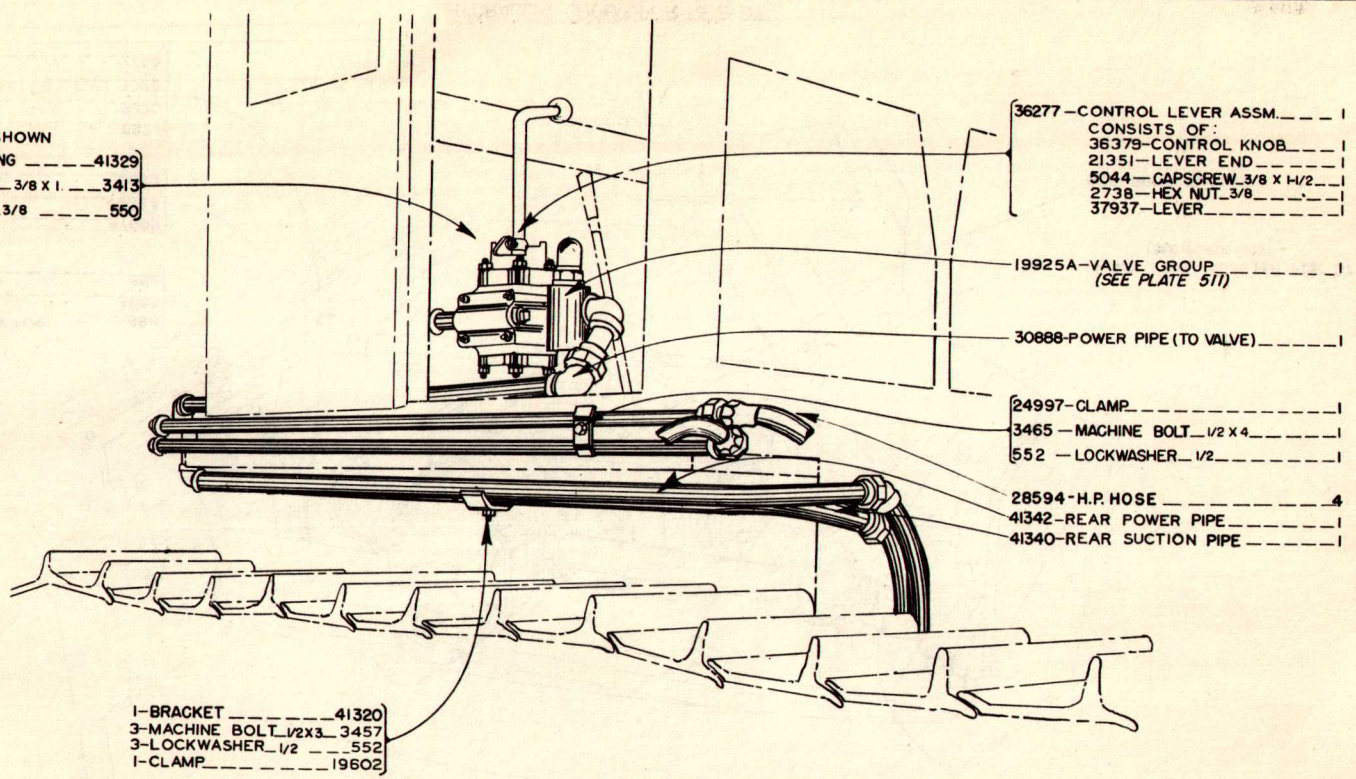
HYDRAULIC GROUP FOR NEW D7

P.1403

HYDRAULICS

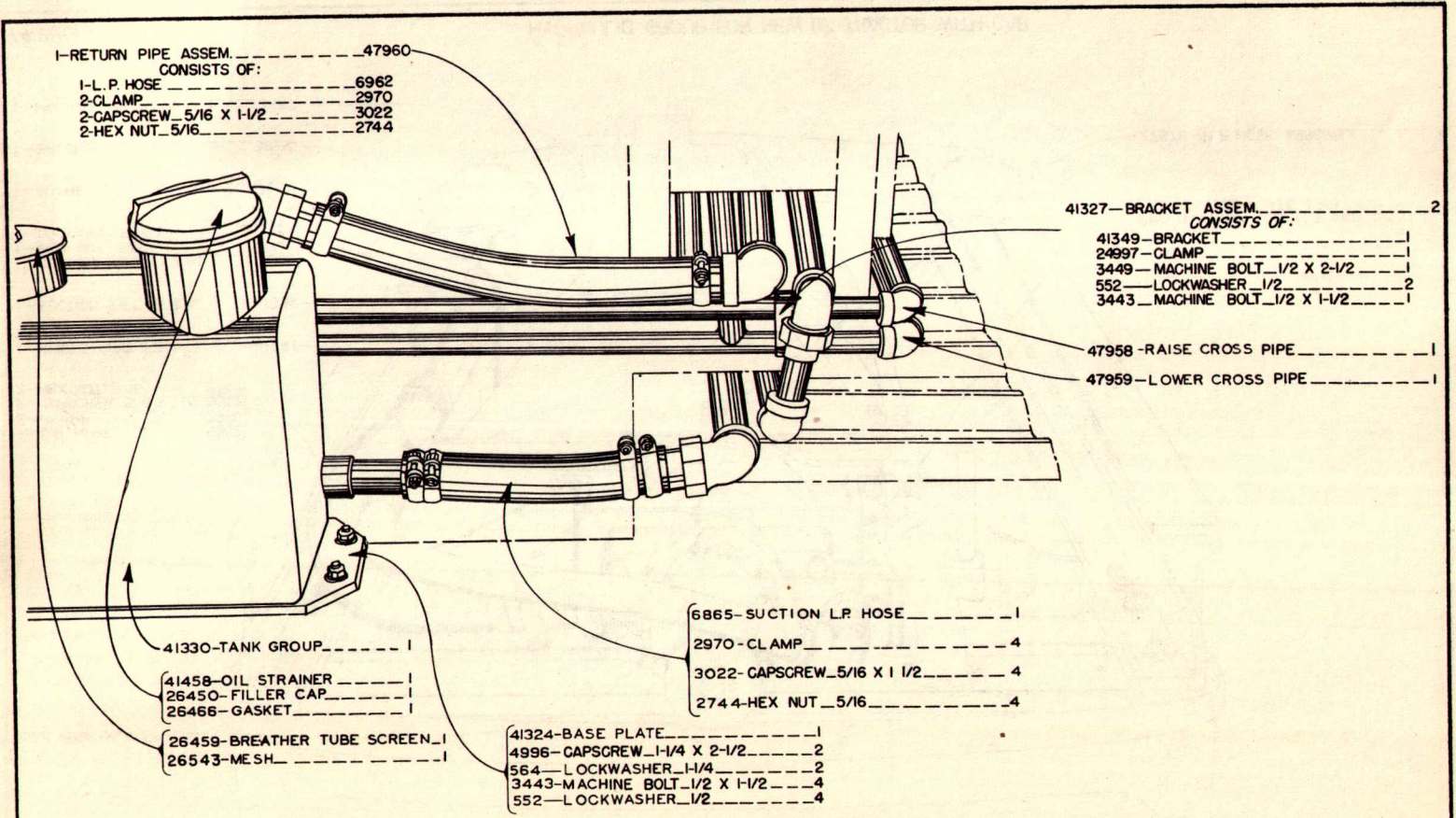
R71 — 854 AND UP

26



(41280D)

HYDRAULIC GROUP FOR NEW D7 WITH CAB



- 1-RETURN PIPE ASSEM. ----- 47960
- CONSISTS OF:
- 1-L. P. HOSE ----- 6962
- 2-CLAMP ----- 2970
- 2-CAPSCREW\_5/16 X 1-1/2 ----- 3022
- 2-HEX NUT\_5/16 ----- 2744

- 41327-BRACKET ASSEM. ----- 2
- CONSISTS OF:
- 41349-BRACKET ----- 1
- 24997-CLAMP ----- 1
- 3449-MACHINE BOLT\_1/2 X 2-1/2 ----- 1
- 552-LOCKWASHER\_1/2 ----- 2
- 3443-MACHINE BOLT\_1/2 X 1-1/2 ----- 1

- 47958-RAISE CROSS PIPE ----- 1
- 47959-LOWER CROSS PIPE ----- 1

- 6865-SUCTION L.P. HOSE ----- 1
- 2970-CLAMP ----- 4
- 3022-CAPSCREW\_5/16 X 1 1/2 ----- 4
- 2744-HEX NUT\_5/16 ----- 4

- 41330-TANK GROUP ----- 1
- 41458-OIL STRAINER ----- 1
- 26450-FILLER CAP ----- 1
- 26466-GASKET ----- 1
- 26459-BREATHER TUBE SCREEN ----- 1
- 26543-MESH ----- 1

- 41324-BASE PLATE ----- 1
- 4996-CAPSCREW\_1-1/4 X 2-1/2 ----- 2
- 564-LOCKWASHER\_1-1/4 ----- 2
- 3443-MACHINE BOLT\_1/2 X 1-1/2 ----- 4
- 552-LOCKWASHER\_1/2 ----- 4

(41280D)

HYDRAULIC GROUP FOR NEW D7 WITH CAB

P. 1443



SEE PUMP PLATES

1— L.P. HOSE ..... 6962  
 2— CLAMP ..... 2970  
 2— CAPSCREW\_5/16 X 1-1/2 ..... 3022  
 2— HEX NUT\_5/16 ..... 2744

1— POWER PIPE (FRONT) ..... 41341

1— SUCTION PIPE (FRONT) ..... 41339

1— CAPSCREW\_5/8 X 1-1/2 ..... 5098

1— HEX NUT\_5/8 ..... 2746

1— LOCKWASHER\_5/8 ..... 554

1— CLAMP ..... 36371

1— BRACKET ..... 36235

1— MACHINE BOLT\_1/2 X 3 ..... 3457

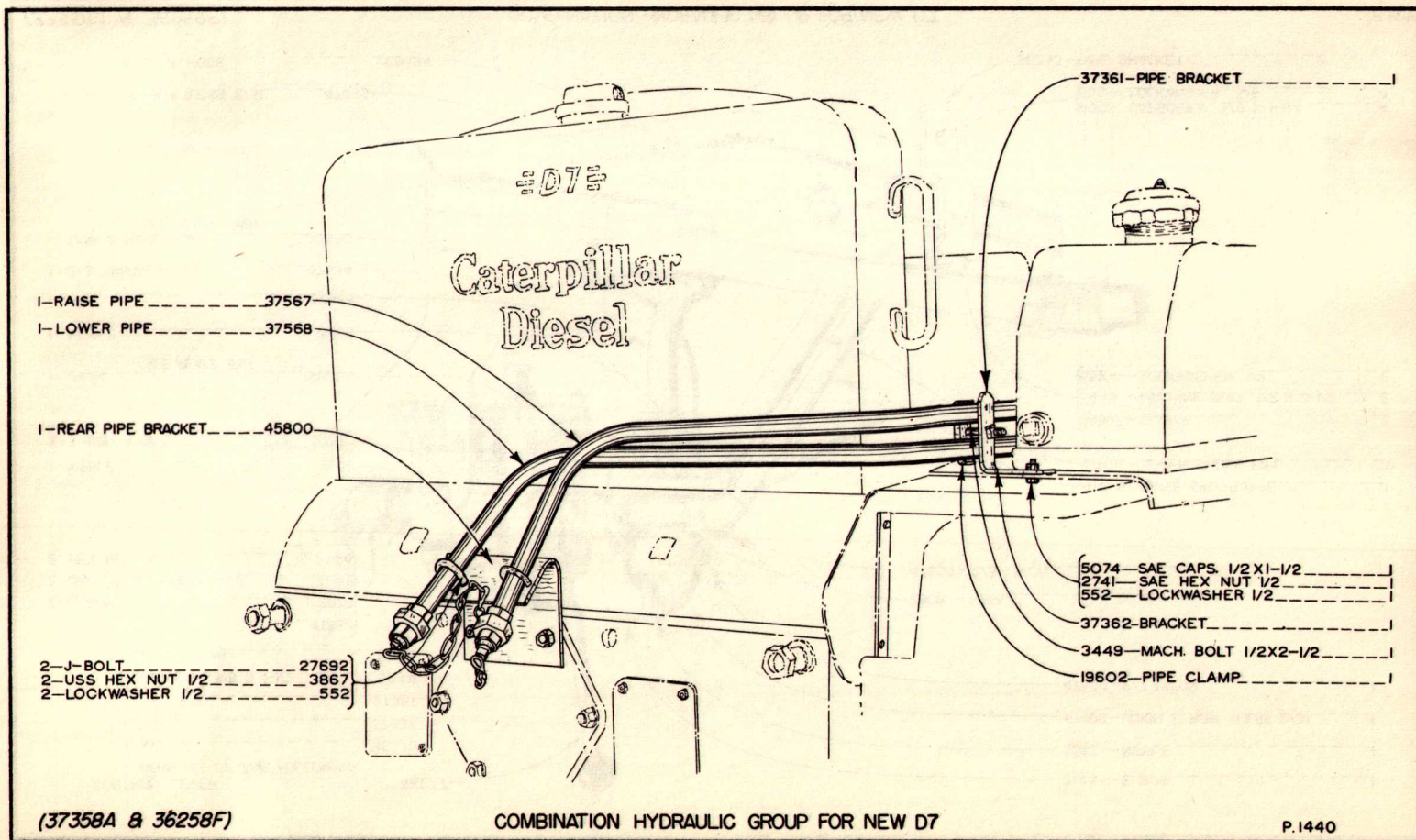
FRONT PUMP ADAPTER FOR D7  
(SEE PLATE 695)

27678—H.P. HOSE ASSEMBLY

(41280D)

HYDRAULIC GROUP FOR NEW D7 TRACTOR WITH CAB

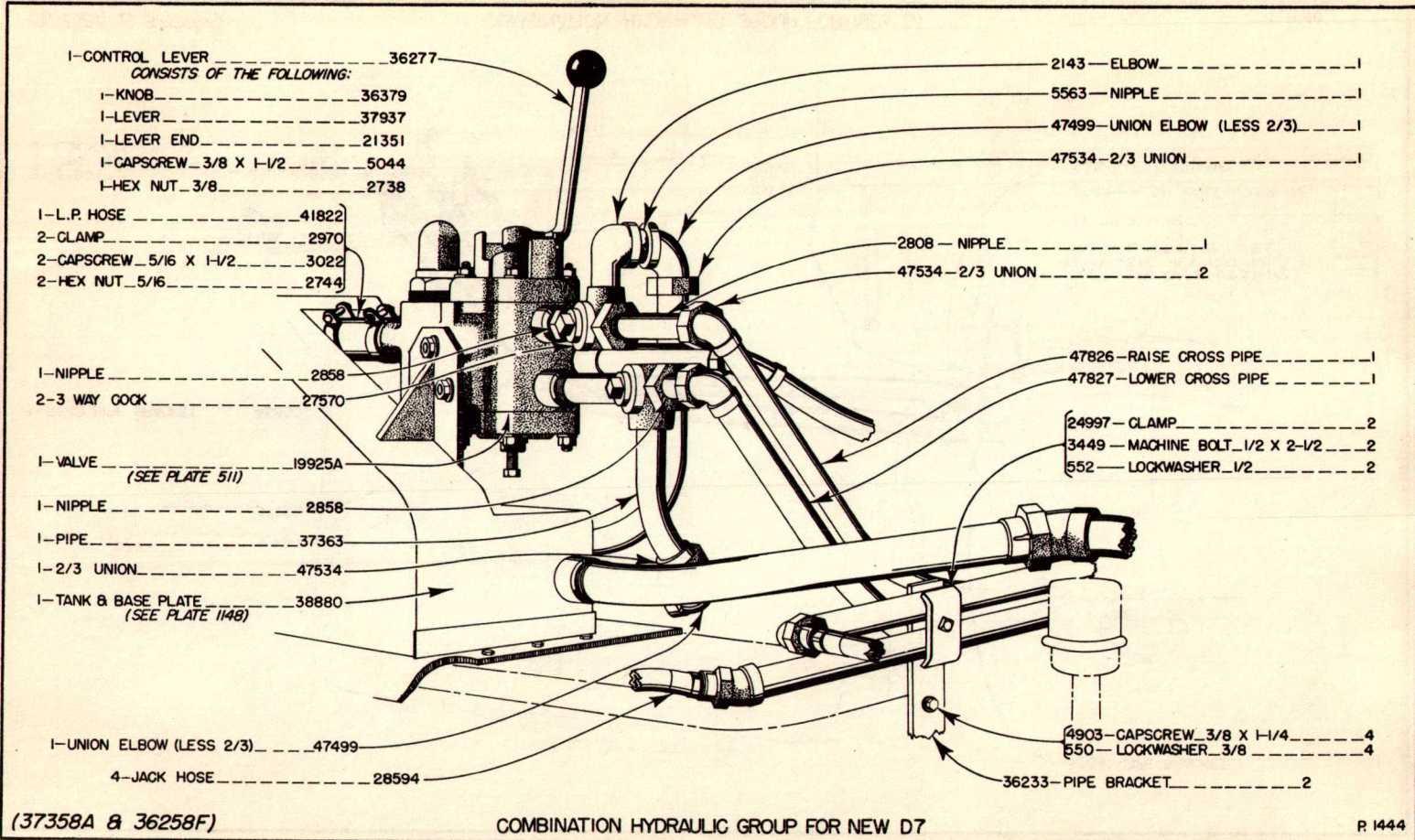
P.1445

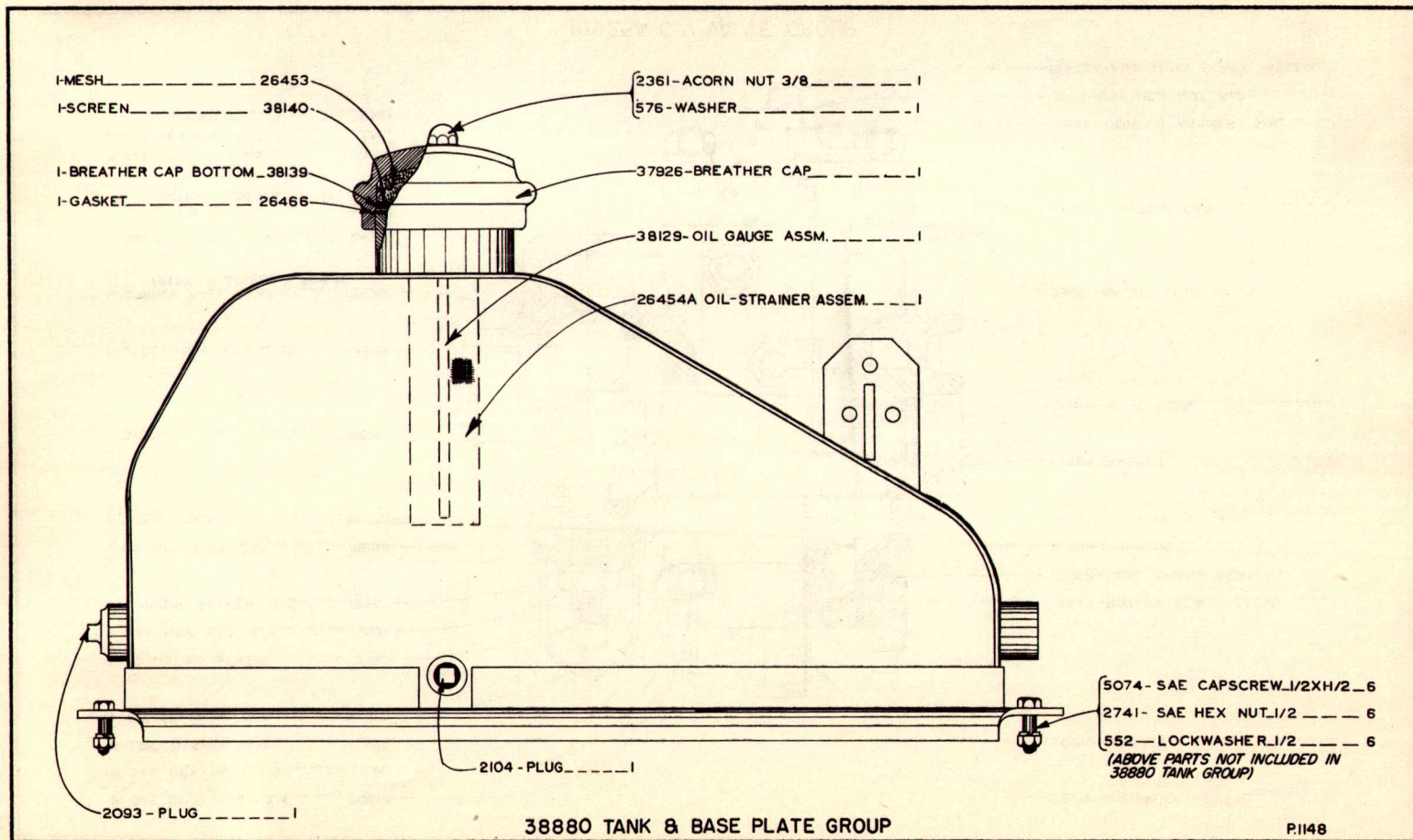


# HYDRAULICS, COMBINATION

R71 — 1 AND UP

30

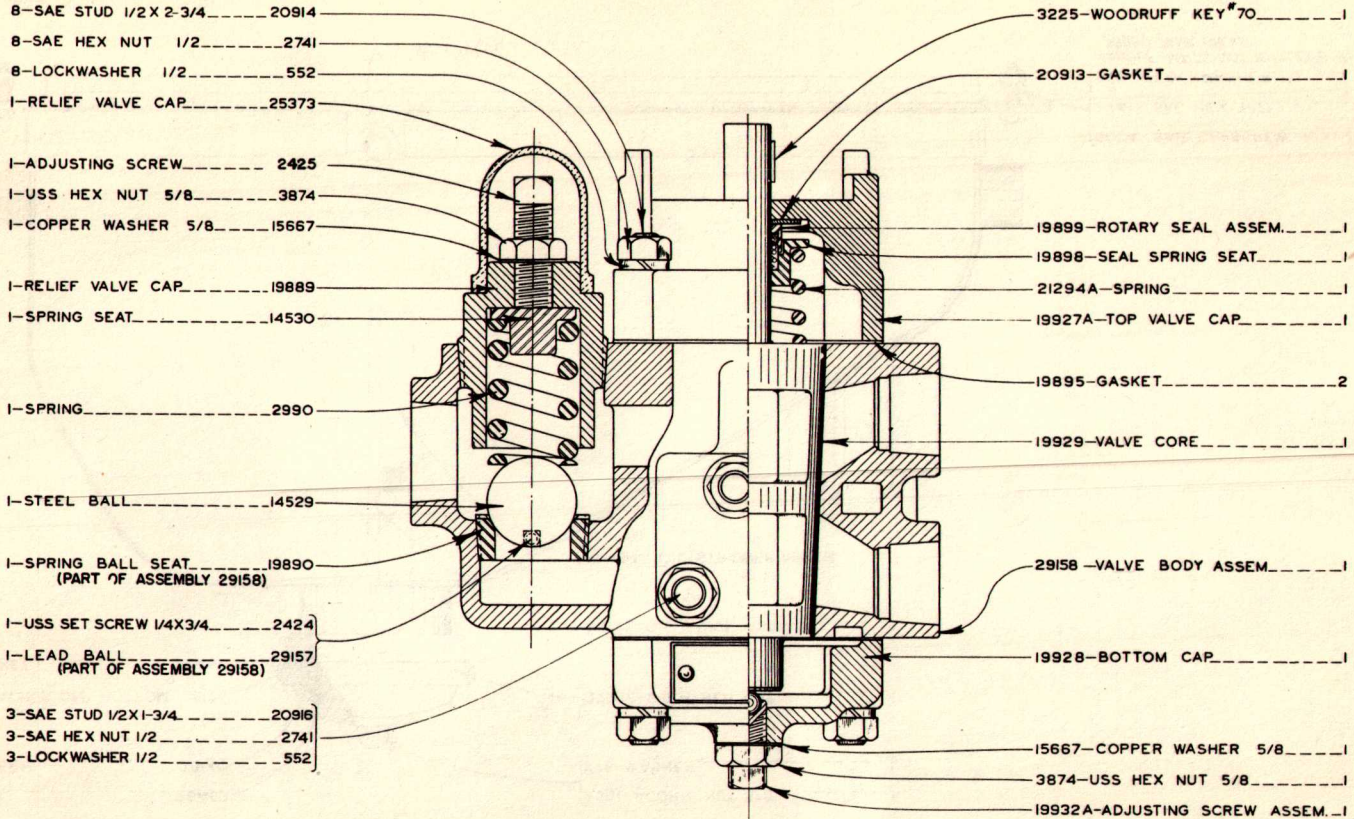




TANK

# VALVE

# R71 — I AND UP

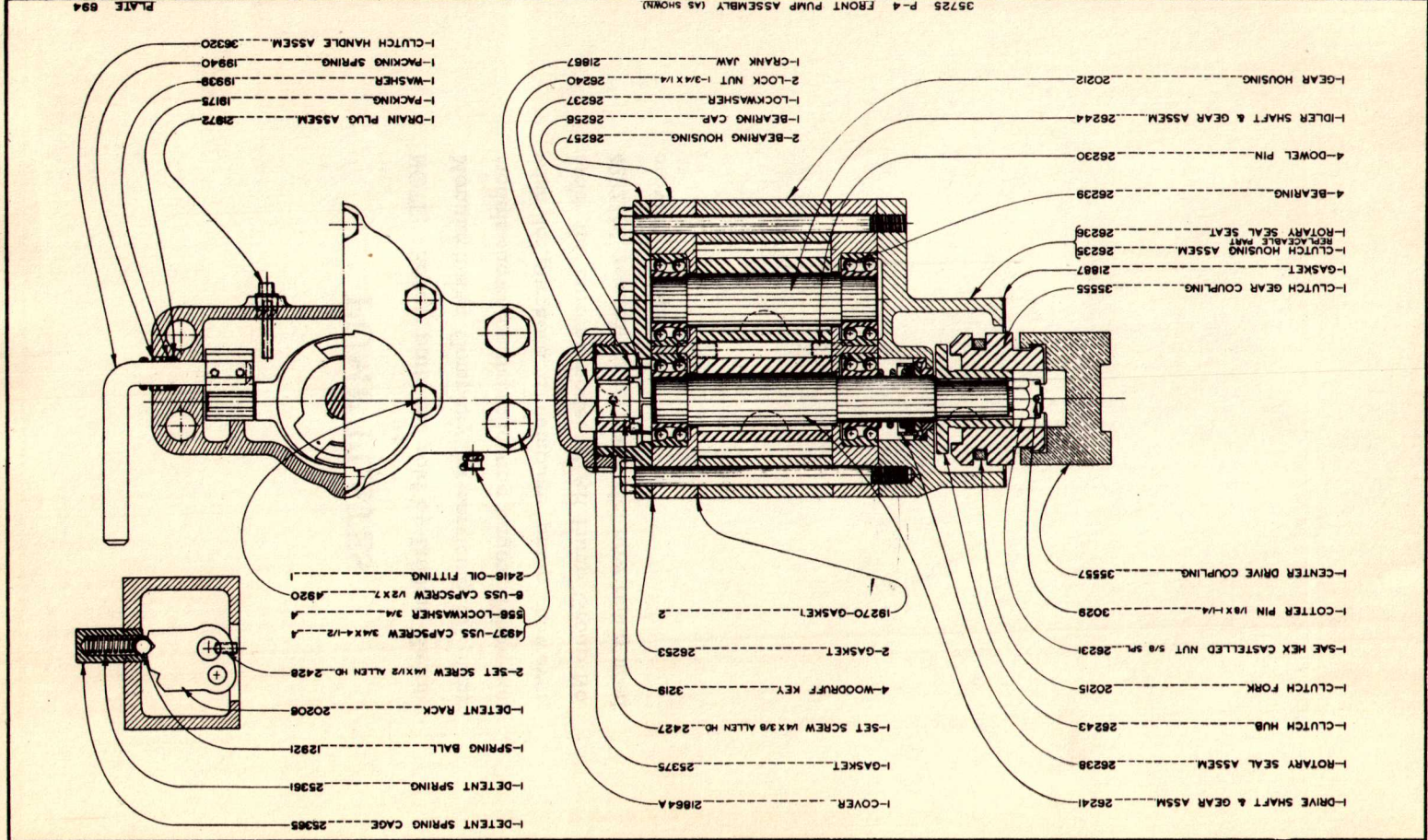


19925A C. V. VALVE GROUP



## PUMP PLATES

**NOTE:** Repair parts are sold by LaPlant-Choate Manufacturing Company for servicing all pump models shown on the following pages. When you wish to purchase a complete pump, however, order the current model (P7AR Pump Group No. 42323A), regardless of the model now being used on your equipment.

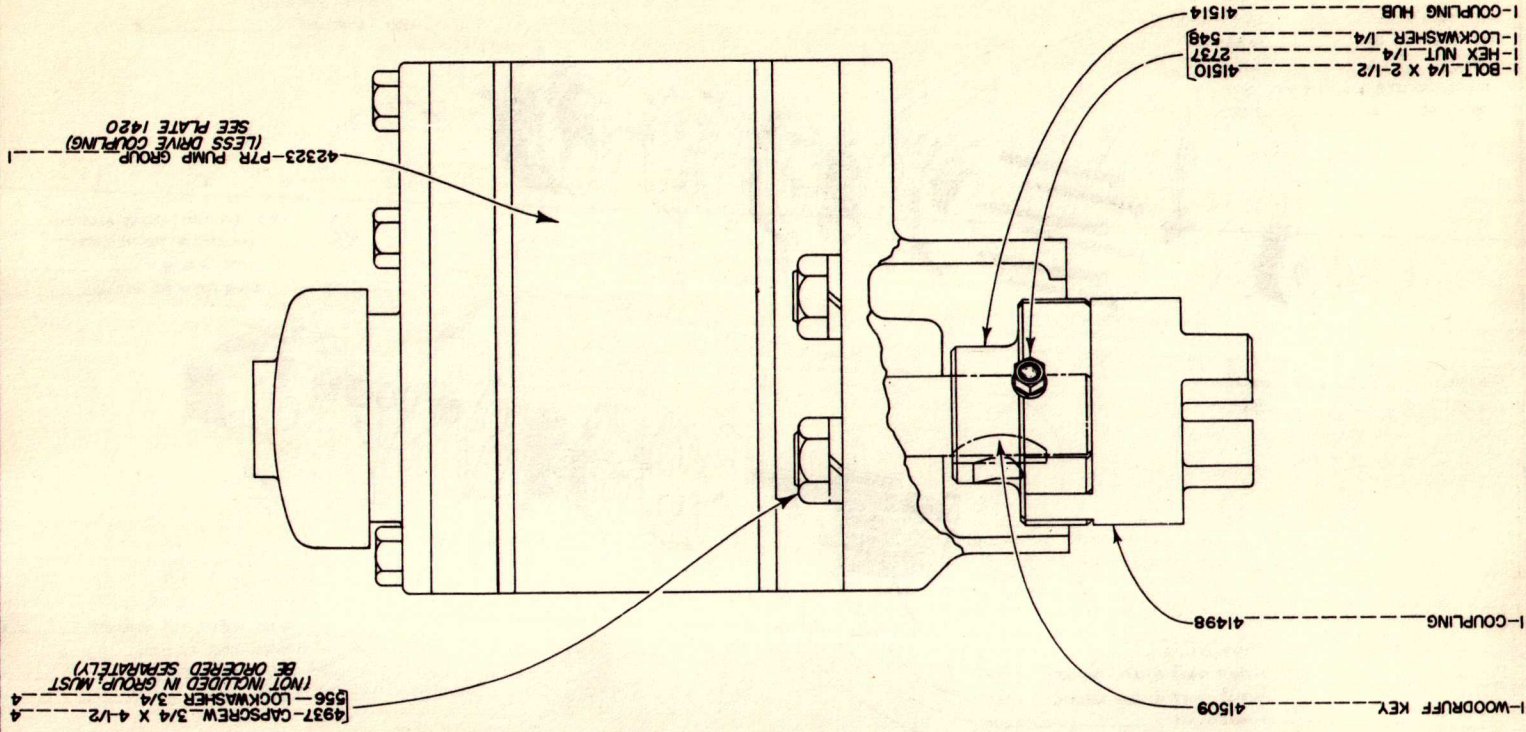


PUMP

(44457A)

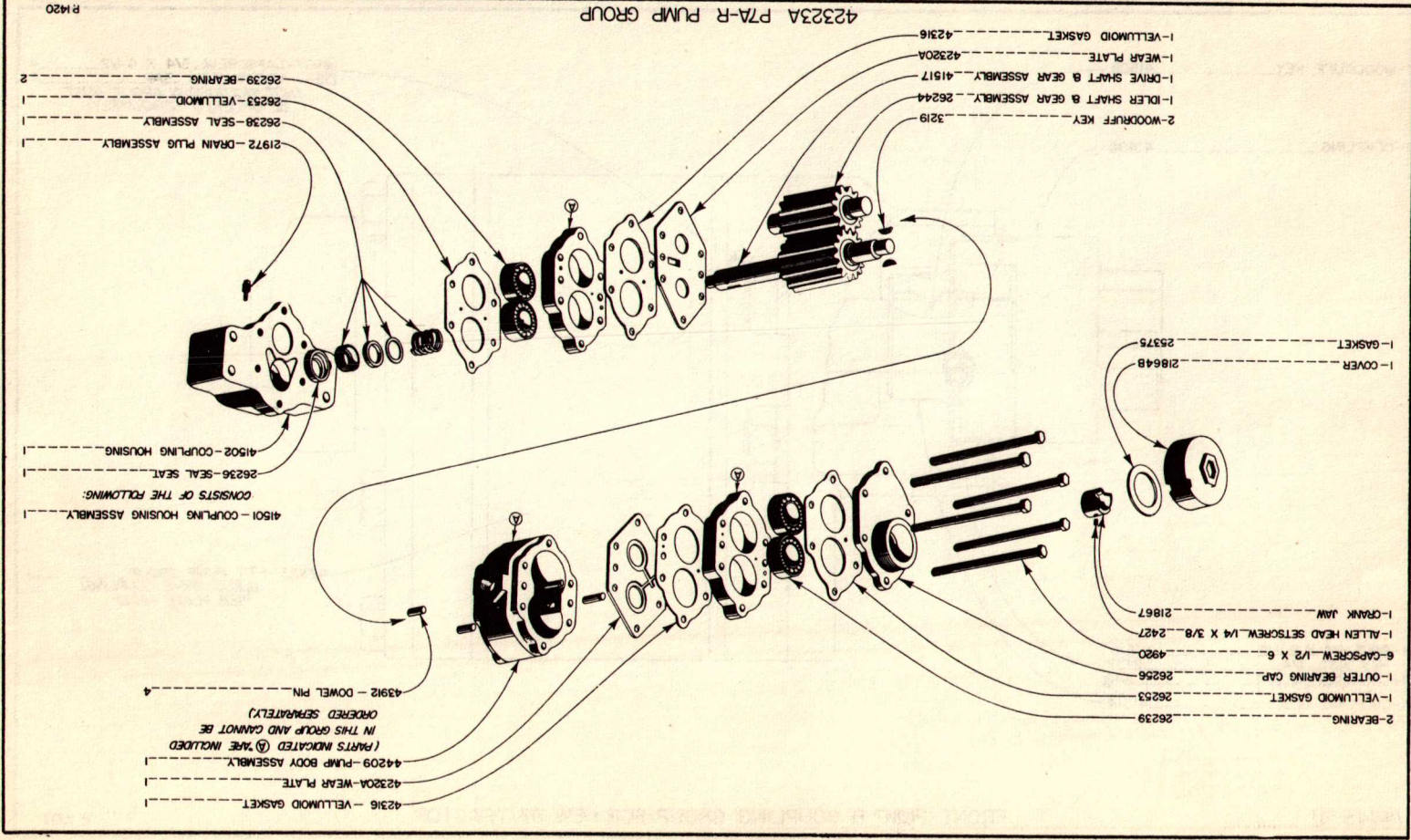
## FRONT PUMP &amp; COUPLING GROUP FOR NEW D7 TRACTOR

P 1503





42323A P7A-R PUMP GROUP



- 2-WOODRUFF KEY 3219
- 1-IDLER SHAFT & GEAR ASSEMBLY 26244
- 1-DRIVE SHAFT & GEAR ASSEMBLY 41517
- 1-WEAR PLATE 42320A
- 1-VELLUMOD GASKET 42316

- 2-BEARING 26239
- 1-VELLUMOD GASKET 26253
- 1-OUTER BEARING CAP 26256
- 6-CAPSCREW 1/2 X 6 4920
- 1-ALLEN HEAD SETSCREW 1/4 X 3/8 2427
- 1-CRANK JAW 21867

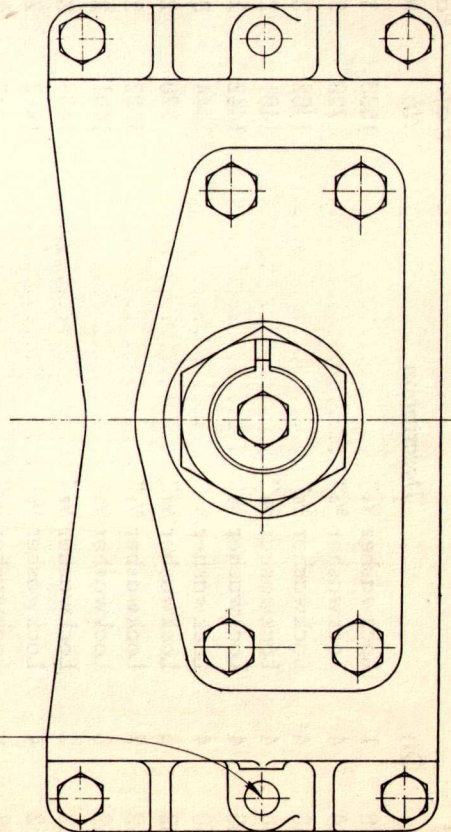
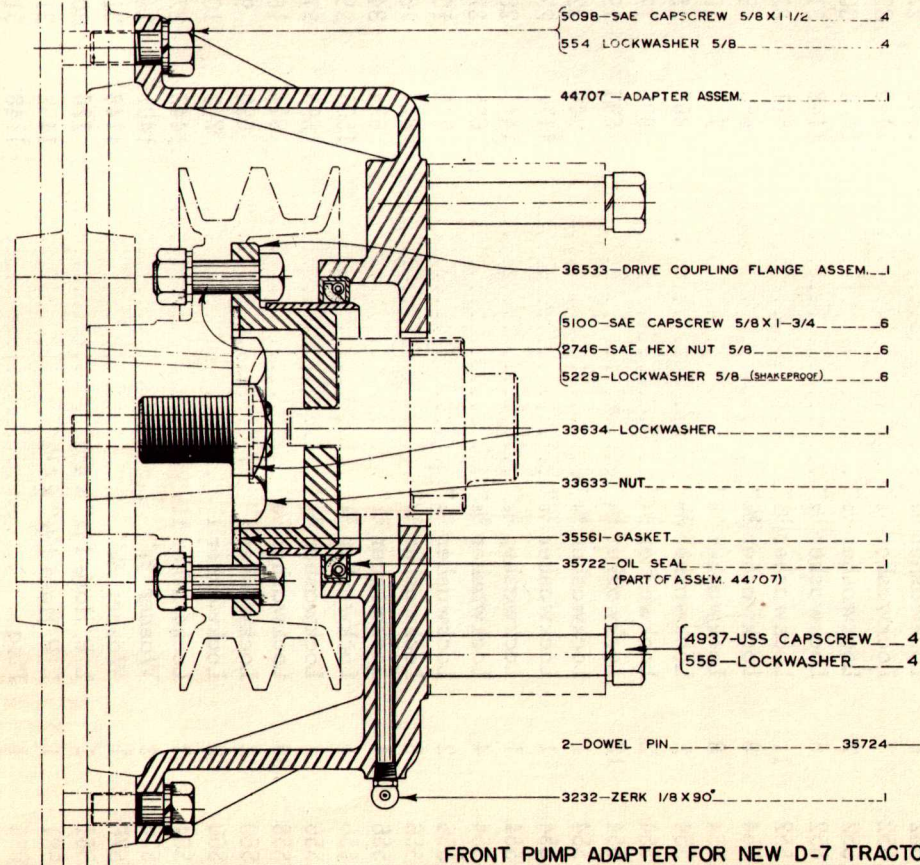
- 1-COVER 21864B
- 1-GASKET 25375

- 42316 - VELLUMOD GASKET
- 42320A - WEAR PLATE
- 423209 - PUMP BODY ASSEMBLY

- 43912 - DOWEL PIN
- 41501 - COUPLING HOUSING ASSEMBLY

- 26236 - SEAL SEAT
- 41502 - COUPLING HOUSING
- 21972 - DRAIN PLUG ASSEMBLY
- 26236 - SEAL ASSEMBLY
- 26253 - VELLUMOD
- 26239 - BEARING

(PARTS INDICATED (P) ARE INCLUDED IN THIS GROUP AND CANNOT BE ORDERED SEPARATELY)



FRONT PUMP ADAPTER FOR NEW D-7 TRACTOR

# NUMERICAL PARTS LIST

## MODEL R71 SIDE-DOZER

Part No.	Qty.	Description	Plate No.	Page No.
548	1	Lockwasher 1/4" .....	1503	35
550	4	Lockwasher 3/8" .....	720	20
550	4	Lockwasher 3/8" .....	1402	21
550	4	Lockwasher 3/8" .....	1401	24
550	4	Lockwasher 3/8" .....	1442	26
550	4	Lockwasher 3/8" .....	1444	30
552	6	Lockwasher 1/2" .....	720	20
552	2	Lockwasher 1/2" .....	1402	21
552	6	Lockwasher 1/2" .....	1401	24
552	2	Lockwasher 1/2" .....	1403	25
552	4	Lockwasher 1/2" .....	1442	26
552	8	Lockwasher 1/2" .....	1443	27
552	3	Lockwasher 1/2" .....	1440	29
552	2	Lockwasher 1/2" .....	1444	30
552	6	Lockwasher 1/2" .....	1148	31
552	11	Lockwasher 1/2" .....	511	32
554	8	Lockwasher 5/8" .....	690	9
554	8	Lockwasher 5/8" .....	718	10
554	8	Lockwasher 5/8" .....	868	15
554	2	Lockwasher 5/8" .....	905	17
554	12	Lockwasher 5/8" .....	693	19
554	1	Lockwasher 5/8" .....	946	22
554	1	Lockwasher 5/8" .....	1171	23
554	1	Lockwasher 5/8" .....	1445	28
554	4	Lockwasher 5/8" .....	695	37
556	2	Lockwasher 3/4" .....	718	10
556	8	Lockwasher 3/4" .....	814	16
556	4	Lockwasher 3/4" .....	694	34
556	4	Lockwasher 3/4" .....	1503	35
556	4	Lockwasher 3/4" .....	695	37
558	30	Lockwasher 7/8" .....	814	16
560	2	Lockwasher 1" .....	690	9
560	2	Lockwasher 1" .....	718	10
564	2	Lockwasher 1 1/4" .....	1443	27
576	2	Washer 3/8" .....	1401	24
576	1	Washer 3/8" .....	1148	31
1981	1	L. P. Hose 1 1/2" x 4 1/2" .....	720	20
1981	1	L. P. Hose 1 1/2" x 4 1/2" .....	1402	21
2093	1	Plug .....	1148	31
2104	1	Pipe Plug .....	720	20
2104	1	Plug .....	1148	31

NUMERICAL PARTS LIST, MODEL R71 SIDE-DOZER—Cont'd

Part No.	Qty.	Description	Plate No.	Page No.
2143	4	Street Elbow .....	1062	18
2143	1	Elbow .....	1444	30
2193	4	Shoulder Bushing .....	1062	18
2216	2	Packing .....	693	19
2361	1	Acorn Nut 3/8" .....	1148	31
2416	1	Oil Fitting .....	694	34
2424	1	Setscrew 1/4" x 3/4" .....	511	32
2425	1	Adjusting Screw .....	511	32
2427	1	Set Screw 1/4" x 3/8" Allen Head .....	694	34
2427	1	Allen Head Setscrew 1/4" x 3/8" .....	1420	36
2428	4	Setscrew 1/4" x 1/2" Allen Head .....	814	16
2428	2	Setscrew 1/4" x 1/2" Allen Head .....	694	34
2624	4	Plowbolt 5/8" x 1 3/4" .....	690	9
2624	4	Plowbolt 5/8" x 1 3/4" .....	718	10
2624	4	Plowbolt 5/8" x 1 3/4" .....	929	11
2624	4	Plowbolt 5/8" x 1 3/4" .....	1215	12
2644	8	Plowbolt 5/8" x 2 1/2" .....	690	9
2644	8	Plowbolt 5/8" x 2 1/2" .....	718	10
2644	8	Plowbolt 5/8" x 2 1/2" .....	868	15
2658	4	Plowbolt .....	1215	12
2668	24	Plowbolt 5/8" x 2" .....	690	9
2668	24	Plowbolt 5/8" x 2" .....	718	10
2668	24	Plowbolt 5/8" x 2" .....	929	11
2668	20	Plowbolt 5/8" x 2" .....	1215	12
2737	1	Hex Nut 1/4" .....	1503	35
2738	1	Hex Nut 3/8" .....	720	20
2738	1	Hex Nut 3/8" .....	1402	21
2738	1	Hex Nut 3/8" .....	1442	26
2738	1	Hex Nut 3/8" .....	1444	30
2741	4	Hex Nut 1/2" .....	720	20
2741	1	Hex Nut 1/2" .....	1440	29
2741	6	Hex Nut 1/2" .....	1148	31
2741	11	Hex Nut 1/2" .....	511	32
2744	2	Hex Nut 5/16" .....	720	20
2744	2	Hex Nut 5/16" .....	1402	21
2744	2	Hex Nut 5/16" .....	946	22
2744	2	Hex Nut 5/16" .....	1171	23
2744	2	Hex Nut 5/16" .....	1403	25
2744	6	Hex Nut 5/16" .....	1443	27
2744	2	Hex Nut 5/16" .....	1445	28
2744	2	Hex Nut 5/16" .....	1444	30
2746	4	Hex Nut 5/8" .....	693	19

NUMERICAL PARTS LIST, MODEL R71 SIDE-DOZER—Cont'd

Part No.	Qty.	Description	Plate No.	Page No.
2746	1	Hex Nut 5/8"	946	22
2746	1	Hex Nut 5/8"	1171	23
2746	1	Hex Nut 5/8"	1445	28
2746	6	Hex Nut 5/8"	695	37
2750	2	Hex Nut 3/4"	718	10
2750	8	Hex Nut 3/4"	814	16
2757	2	Hex Nut 1"	690	9
2757	2	Hex Nut 1"	718	10
2808	1	Nipple	1444	30
2858	2	Nipple	1444	30
2970	2	Clamp	720	20
2970	2	Hose Clamp	1402	21
2970	2	Clamp	946	22
2970	2	Clamp	1171	23
2970	2	Clamp	1403	25
2970	6	Clamp	1443	27
2970	2	Clamp	1445	28
2970	2	Clamp	1444	30
2977	1	Outer Bearing Pivot Plate	929	11
2987	2	Zerk	992	13
2990	1	Spring	511	32
3022	2	Capscrew 5/16" x 1 1/2"	1445	28
3022	2	Capscrew 5/16" x 1 1/2"	720	20
3022	2	Capscrew 5/16" x 1 1/2"	1402	21
3022	2	Capscrew 5/16" x 1 1/2"	946	22
3022	2	Capscrew 5/16" x 1 1/2"	1171	23
3022	2	Capscrew 5/16" x 1 1/2"	1403	25
3022	6	Capscrew 5/16" x 1 1/2"	1443	27
3022	2	Capscrew 5/16" x 1 1/2"	1444	30
3029	1	Cotter Pin 1/8" x 1 1/4"	694	34
3049	2	Cotter Pin 1/4" x 3"	693	19
3062	4	Cotter Pin 3/8" x 2"	690	9
3062	6	Cotter Pin 3/8" x 2"	718	10
3062	2	Cotter Pin 3/8" x 2"	929	11
3062	2	Cotter Pin 3/8" x 2"	1215	12
3072	2	Cotter Pin 1/2" x 2"	690	9
3072	2	Cotter Pin 1/2" x 2"	718	10
3072	2	Cotter Pin 1/2" x 2"	992	13
3073	2	Cotter Pin 1/2" x 2 1/2"	992	13
3073	4	Cotter Pin 1/2" x 2 1/2"	693	19
3074	2	Cotter Pin 1/2" x 3"	690	9
3074	2	Cotter Pin 1/2" x 3"	718	10

NUMERICAL PARTS LIST, MODEL R71 SIDE-DOZER—Cont'd

Part No.	Qty.	Description	Plate No.	Page
3074	1	Cotter Pin 1/2" x 3"	929	11
3074	1	Cotter Pin 1/2" x 3"	1215	12
3074	2	Cotter Pin 1/2" x 3"	905	17
3219	4	Woodruff Key	694	34
3219	2	Woodruff Key	1420	36
3225	1	Woodruff Key #70	511	32
3232	1	Zerk 1/8" x 90°	695	37
3413	4	Machine Bolt 3/8" x 1"	1442	26
3443	6	Machine Bolt 1/2" x 1 1/2"	1443	27
3449	2	Bolt 1/2" x 2 1/2"	720	20
3449	2	Bolt 1/2" x 2 1/2"	1402	21
3449	2	Machine Bolt 1/2" x 2 1/2"	1443	27
3449	1	Machine Bolt 1/2" x 2 1/2"	1440	29
3449	2	Machine Bolt 1/2" x 2 1/2"	1444	30
3457	1	Machine Bolt 1/2" x 3"	946	22
3457	1	Machine Bolt 1/2" x 3"	1171	23
3457	3	Machine Bolt 1/2" x 3"	1442	26
3457	1	Machine Bolt 1/2" x 3"	1445	28
3465	1	Machine Bolt 1/2" x 4"	1442	26
3863	2	Nut 3/8"	1401	24
3863	1	Hex Nut 3/8"	1403	25
3867	8	Nut 1/2"	1401	24
3867	2	Hex Nut 1/2"	1403	25
3867	2	Hex Nut 1/2"	1440	29
3869	2	Jam Nut 1/2"	868	15
3872	2	Hex Nut 5/8"	905	17
3874	2	Hex Nut 5/8"	511	32
4903	4	CapscREW 3/8" x 1 1/4"	720	20
4903	4	CapscREW 3/8" x 1 1/4"	1402	21
4903	4	CapscREW 3/8" x 1 1/4"	1444	30
4904	2	CapscREW 3/8"	1401	24
4911	2	CapscREW 1/2" x 1 1/2"	1401	24
4911	2	CapscREW 1/2" x 1 1/2"	1403	25
4920	6	CapscREW 1/2" x 7"	694	34
4920	6	CapscREW 1/2" x 7"	1420	36
4937	4	CapscREW 3/4" x 4 1/2"	694	34
4937	4	CapscREW 3/4" x 4 1/2"	1503	35
4937	4	CapscREW 3/4" x 4 1/2"	695	37
4943	2	CapscREW 5/8" x 4"	905	17
4966	2	CapscREW 1 1/4" x 2 1/2"	1443	27
5044	1	CapscREW 3/8" x 1 1/2"	720	20
5044	1	CapscREW 3/8" x 1 1/2"	1402	21

# NUMERICAL PARTS LIST, MODEL R71 SIDE-DOZER—Cont'd

Part No.	Qty.	Description	Plate No.	Page No.
5044	1	Capscrew $\frac{3}{8}$ " x $1\frac{1}{2}$ " .....	1442	26
5044	1	Capscrew $\frac{3}{8}$ " x $1\frac{1}{2}$ " .....	1444	30
5074	4	Capscrew $\frac{1}{2}$ " x $1\frac{1}{2}$ " .....	720	20
5074	1	Capscrew $\frac{1}{2}$ " x $1\frac{1}{2}$ " .....	1440	29
5074	6	Capscrew $\frac{1}{2}$ " x $1\frac{1}{2}$ " .....	1148	31
5098	1	Capscrew $\frac{5}{8}$ " x $1\frac{1}{2}$ " .....	946	22
5098	1	Capscrew $\frac{5}{8}$ " x $1\frac{1}{2}$ " .....	1171	23
5098	1	Capscrew $\frac{5}{8}$ " x $1\frac{1}{2}$ " .....	1445	28
5098	4	Capscrew $\frac{5}{8}$ " x $1\frac{1}{2}$ " .....	695	37
5100	6	Capscrew $\frac{5}{8}$ " x $1\frac{3}{4}$ " .....	695	37
5134	8	Capscrew $\frac{3}{4}$ " x $2\frac{3}{4}$ " .....	814	16
5147	2	Capscrew $\frac{3}{4}$ " x 4" .....	718	10
5229	6	Lockwasher .....	695	37
5267	2	Capscrew 1" x $3\frac{1}{2}$ " .....	690	9
5267	2	Capscrew 1" x $3\frac{1}{2}$ " .....	718	10
5563	1	Nipple .....	1444	30
6095	2	Zerk .....	992	13
6095	8	Zerk $\frac{1}{8}$ " .....	814	16
6095	4	Zerk $\frac{1}{8}$ " .....	905	17
6865	1	Suction L. P. Hose .....	1443	27
6879	1	L. P. Hose .....	1403	25
6962	1	L. P. Hose .....	946	22
6962	1	L. P. Hose .....	1443	27
6962	1	L. P. Hose .....	1445	28
12921	1	Spring Ball .....	694	34
13004	1	L. P. Hose .....	1171	23
14529	1	Steel Ball .....	511	32
14530	1	Spring Seat .....	511	32
15667	2	Copper Washer $\frac{5}{8}$ " .....	511	32
19070	1	Cutting Edge .....	690	9
19070	1	Cutting Edge .....	718	10
19070	1	Cutting Edge .....	929	11
19070	1	Cutting Edge .....	1215	12
19175	1	Packing .....	694	34
19270	2	Gasket .....	694	34
19602	1	Clamp .....	1442	26
19602	1	Pipe Clamp .....	1440	29
19889	1	Relief Valve Cap .....	511	32
19890	1	Spring Ball Seat .....	511	32
19895	2	Gasket .....	511	32
19899	1	Rotary Seal .....	511	32
19925	1	Valve .....	720	20

NUMERICAL PARTS LIST, MODEL R71 SIDE-DOZER—Cont'd

Part No.	Qty.	Description	Plate No.	Page No.
19925	1	C. V. Valve .....	1402	21
19925	1	Valve .....	1442	26
19925	1	Valve .....	1444	30
19925	1	C. V. Valve .....	511	32
19927	1	Top Valve Cap .....	511	32
19928	1	Bottom Cap .....	511	32
19929	1	Valve Core .....	511	32
19932	1	Adjusting Screw .....	511	32
19939	1	Washer .....	694	34
19940	1	Packing Spring .....	694	34
20028	2	Roller .....	690	9
20028	2	Roller .....	718	10
20028	2	Roller .....	992	13
20143	2	Pin .....	690	9
20143	2	Pin .....	718	10
20143	2	Roller Pin .....	992	13
20206	1	Detent Rack .....	694	34
20212	1	Gear Housing .....	694	34
20215	1	Clutch Fork .....	694	34
20453	1	"U" Bolt .....	1401	24
20729	1	R. H. Blade Corner End .....	690	9
20729	1	R. H. Blade Corner End .....	718	10
20729	1	R. H. Corner End .....	929	11
20729	1	R. H. Corner End .....	1215	12
20730	1	L. H. Blade Corner End .....	690	9
20730	1	L. H. Blade Corner End .....	718	10
20730	1	L. H. Corner End .....	929	11
20730	1	L. H. Corner End .....	1215	12
20734	2	M. F. Jaw Bearing .....	814	16
20753	2	Pin .....	690	9
20753	2	Pin .....	718	10
20753	2	Blade Lock Pin .....	929	11
20753	2	Blade Lock Pin .....	1215	12
20913	1	Gasket .....	511	32
20914	8	Stud 1/2" x 2 3/4" .....	511	32
20916	3	Stud 1/2" x 1 3/4" .....	511	32
21294	1	Spring .....	511	32
21351	1	Lever End .....	720	20
21351	1	Lever End .....	1402	21
21351	1	Lever End .....	1442	26
21351	1	Lever End .....	1444	30
21691	2	Gland .....	693	19



NUMERICAL PARTS LIST, MODEL R71 SIDE-DOZER—Cont'd

Part No.	Qty.	Description	Plate No.	Page No.
21692	2	Bellows	693	19
21693	12	Special Nut 5/8"	693	19
21864	1	Cover	694	34
21864	1	Cover	1420	36
21867	1	Crank Jaw	694	34
21867	1	Crank Jaw	1420	36
21887	1	Gasket	694	34
21972	1	Drain Plug	694	34
21972	1	Drain Plug	1420	36
24997	2	Clamp	720	20
24997	2	Clamp	1402	21
24997	2	Clamp	1442	26
24997	2	Clamp	1443	27
25361	1	Detent Spring	1444	30
25365	1	Detent Spring	694	34
25373	1	Detent Spring Cage	694	34
25375	1	Relief Valve Cap	511	32
25375	1	Gasket	694	34
25375	1	Gasket	694	34
25783	2	Cylinder, Base and Stud	1420	36
26230	4	Dowel Pin	693	19
26231	1	Hex Castellated Nut 5/8"	694	34
26235	1	Clutch Housing	694	34
26236	1	Rotary Seal	694	34
26236	1	Rotary Seal	1420	36
26237	1	Lockwasher	694	34
26238	1	Rotary Seal	694	34
26238	1	Rotary Seal	1420	36
26239	4	Bearing	694	34
26239	4	Bearing	1420	36
26240	2	Locknut 1/4" x 1 1/4"	694	34
26241	1	Drive Shaft and Gear	694	34
26243	1	Clutch Hub	694	34
26244	1	Idle Shaft and Gear	694	34
26244	1	Idle Shaft and Gear	1420	36
26253	2	Gasket	694	34
26253	2	Vellumoid Gasket	1420	36
26256	1	Bearing Cap	694	34
26256	1	Outer Bearing Cap	1420	36
26257	2	Bearing Housing	694	34
26450	1	Filler Cap	1443	27
26543	1	Mesh	1443	27

NUMERICAL PARTS LIST, MODEL R71 SIDE-DOZER—Cont'd

Part No.	Qty.	Description	Plate No.	Page No.
26450	1	Cap .....	720	20
26453	1	Mesh .....	720	20
26453	1	Mesh .....	1148	31
26454	1	Oil Strainer .....	720	20
26454	1	Oil Strainer .....	1148	31
26459	1	Breather Tube Screen .....	1443	27
26466	1	Gasket .....	720	20
26466	1	Gasket .....	1443	27
26466	1	Gasket .....	1148	31
27570	2	3-Way Cock .....	1444	30
27678	1	H. P. Hose .....	946	22
27678	1	H. P. Hose .....	1171	23
27678	1	H. P. Hose .....	1445	28
27692	2	"J" Bolt .....	1401	24
27692	2	"J" Bolt .....	1440	29
28349	1	H. P. Hose .....	1403	25
28594	4	Hose .....	720	20
28594	4	H. P. Hose .....	1402	21
28594	4	H. P. Hose .....	1442	26
28594	4	Jack Hose .....	1444	30
29157	1	Lead Ball .....	511	32
29158	1	Valve Body .....	511	32
29769	1	Pin .....	690	9
29769	1	Pin .....	718	10
29769	1	Blade Pivot Pin .....	929	11
29770	2	Pivot .....	992	13
30506	4	Stud 5/8" x 3 3/4" .....	693	19
30888	1	Power Pipe .....	1442	26
30942	4	Jaw Bolt .....	693	19
30964	2	Piston Rod and Jaw .....	693	19
30967	2	Nut .....	693	19
30974	2	Gasket .....	693	19
30987	2	Cup Leather .....	693	19
32904	2	Runner .....	690	9
32904	2	Runner .....	718	10
32904	2	Mushroom Runner .....	868	15
32905	2	Pin .....	690	9
32905	2	Pin .....	718	10
32905	2	Pin .....	868	15
33184	2	Liner .....	814	16
33184	2	Jack Connection Bushing .....	905	17
33316	2	Piston Packing .....	693	19

NUMERICAL PARTS LIST, MODEL R71 SIDE-DOZER—Cont'd

Part No.	Qty.	Description	Plate No.	Page
33633	1	Nut	695	37
33634	1	Lockwasher	695	37
33721	1	Return Pip	720	20
33760	4	Bushing	814	16
33785	2	Lock	690	9
33785	2	Lock	690	9
33822	2	Lift Arm Bearing Pin	905	17
33854	1	Blade	690	9
33854	1	Blade	718	10
33892	2	Lift Link	905	17
33900	1	Main Frame	690	9
33900	1	Main Frame	718	10
33922	2	Pin	690	9
33922	2	Pin	718	10
33922	2	M. F. Jaw Pin	992	13
33923	2	Jaw	690	9
33923	2	Jaw	718	10
33923	2	M. F. Jaw	992	13
34357	2	Stub Axle	814	16
34366	1	R. H. Bracket and Mounting	814	16
34367	1	L. H. Bracket and Mounting	814	16
34368	1	R. H. Inside Jack Bracket	814	16
34369	1	L. H. Inside Jack Bracket	814	16
34372	1	Lift Arm and Link	905	17
34373	2	Pin	690	9
34373	2	Pin	718	10
34373	2	Pin	992	13
34373	2	Lift Link Pin	905	17
34915	2	Pin	690	9
34915	2	Pin	718	10
34915	2	Pin	992	13
34938	2	Lock	690	9
34944	2	Push Pole Jaw	690	9
34944	2	Push Pole Jaw	718	10
34951	1	R. H. Push Pole	690	9
34951	1	R. H. Push Pole	718	10
34952	1	L. H. Push Pole	690	9
34952	1	L. H. Push Pole	718	10
34955	1	R. H. Brace	690	9
34956	1	L. H. Brace	690	9
34971	1	Breather Cap	720	20

# NUMERICAL PARTS LIST, MODEL R71 SIDE-DOZER—Cont'd

Part No.	Qty.	Description	Plate No.	Page No.
34977	1	Oil Gauge .....	720	20
35429	2	Piston .....	693	19
35430	2	Jack .....	693	19
35430	2	Jack .....	1062	18
35472	20	Capscrew $\frac{7}{8}$ " x $2\frac{1}{4}$ " .....	814	16
35555	1	Clutch Gear Coupling .....	694	34
35557	1	Center Drive Coupling .....	694	34
35561	1	Gasket .....	695	37
35722	1	Oil Seal .....	695	37
35724	2	Dowel Pin .....	695	37
36225	2	Runner .....	690	9
36225	2	Runner .....	718	10
36225	2	Runner .....	868	15
36232	1	Tank and Base Plate .....	720	20
36233	2	Bracket .....	720	20
36233	2	Bracket .....	1402	21
36233	2	Pipe Bracket .....	1444	30
36235	1	Bracket .....	946	22
36235	1	Bracket .....	1171	23
36235	1	Bracket .....	1445	28
36277	1	Control Lever Assembly .....	720	20
36277	1	Control Lever Assembly .....	1402	21
36277	1	Control Lever Assembly .....	1442	26
36277	1	Control Lever .....	1444	30
36320	1	Clutch Handle .....	694	34
36371	1	Clamp .....	946	22
36371	1	Clamp .....	1171	23
36371	1	Clamp .....	1445	28
36379	1	Knob .....	720	20
36379	1	Knob .....	1402	21
36379	1	Control Knob .....	1442	26
36379	1	Knob .....	1444	30
36533	1	Drive Coupling Flange .....	695	37
37055	1	R. H. Lift Arm .....	905	17
37056	1	L. H. Lift Arm .....	905	17
37345	2	Pin .....	718	10
37348	2	Blade Lock Jaw .....	718	10
37350	1	R. H. Brace .....	718	10
37351	1	L. H. Brace .....	718	10
37352	2	Blade Brace Jaw .....	718	10
37356	2	Pin .....	718	10
37361	1	Pipe Bracket .....	1440	29

# NUMERICAL PARTS LIST, MODEL R71 SIDE-DOZER—Cont'd

Part No.	Qty.	Description	Plate No.	Page No.
37362	1	Bracket .....	1440	29
37363	1	Pipe .....	1444	30
37402	10	Capscrew 7/8" x 2" .....	814	16
37545	1	Power Pipe .....	946	22
37545	1	Power Pipe .....	1171	23
37549	1	Suction Pipe .....	946	22
37567	1	Raise Pipe .....	1440	29
37568	1	Lower Pipe .....	1440	29
37926	1	Breather Cap .....	1148	31
37937	1	Control Lever .....	720	20
37937	1	Control Lever .....	1402	21
37937	1	Lever .....	1442	26
37937	1	Lever .....	1444	30
38129	1	Oil Gauge .....	1148	31
38139	1	Breather Cap Bottom .....	1148	31
38140	1	Screen .....	1148	31
38160	1	Main Frame .....	992	13
38161	1	Blade .....	929	11
38161	1	Blade .....	1215	12
38230	2	Runner Bracket and Cover .....	868	15
38238	1	R. H. Push Pole .....	870	14
38239	1	L. H. Push Pole .....	870	14
38880	1	Tank and Base Plate .....	1402	21
38880	1	Tank and Base Plate .....	1444	30
40302	1	Setscrew .....	868	15
40561	1	"U" Bolt .....	1401	24
41225	1	Blade Pivot Pin .....	1215	12
41227	1	Outer Bearing Pivot Plate .....	1215	12
41320	1	Bracket .....	1442	26
41324	1	Base Plate .....	1443	27
41327	2	Bracket Assembly .....	1443	27
41329	1	Valve Mounting .....	1442	26
41330	1	Tank .....	1443	27
41339	1	Suction Pipe (Front) .....	1445	28
41340	1	Rear Suction Pipe .....	1442	26
41341	1	Power Pipe (Front) .....	1445	28
41342	1	Rear Power Pipe .....	1442	26
41349	2	Bracket .....	1443	27
41458	1	Oil Strainer .....	1443	27
41498	1	Coupling .....	1503	35
41501	1	Coupling Housing Assembly .....	1420	36
41502	1	Coupling Housing .....	1420	36
41509	1	Woodruff Key .....	1503	35

# NUMERICAL PARTS LIST, MODEL R71 SIDE-DOZER—Cont'd

Part No.	Qty.	Description	Plate No.	Page No.
41510	1	Bolt 1/4" x 2 1/2" .....	1503	35
41514	1	Coupling Hub .....	1503	35
41517	1	Drive Shaft and Gear .....	1420	36
41822	1	L. P. Hose .....	1444	30
42316	2	Vellumoid Gasket .....	1420	36
42320	2	Wear Plate .....	1420	36
42323	1	P7R Pump .....	1503	35
42323	1	P7A-R Pump .....	1420	36
42324	1	"J" Bolt 3/8" .....	1403	25
43687	1	Suction Pipe .....	1171	23
43912	4	Dowel Pin .....	1420	36
44209	1	Pump Body Assembly .....	1420	36
44707	1	Adapter .....	695	37
45800	1	Rear Pipe Bracket .....	1440	29
47041	1	Bracket Group .....	1401	24
47043	1	Brace .....	1401	24
47048	1	Suction Pipe .....	1401	24
47049	1	Suction Pipe .....	1401	24
47050	1	Power Pipe .....	1401	24
47051	1	Power Pipe .....	1401	24
47058	1	Bracket .....	1401	24
47059	1	Bracket .....	1403	25
47060	1	Brace .....	1401	24
47078	1	"U" Bolt .....	1401	24
47086	1	R. H. Cross Pipe Bracket .....	1401	24
47087	1	L. H. Cross Pipe Bracket .....	1401	24
47499	2	Union Elbow (Less 2/3) .....	1444	30
47504	1	Union Elbow .....	1401	24
47524	1	Union .....	1401	24
47525	1	Union .....	1401	24
47534	4	2/3 Union .....	1444	30
47826	1	Raise Cross Pipe .....	720	20
47826	1	Raise Cross Pipe .....	1402	21
47826	1	Raise Cross Pipe .....	1444	30
47827	1	Lower Cross Pipe .....	1402	21
47827	1	Lower Cross Pipe .....	1444	30
47829	1	Lower Cross Pipe .....	720	20
47958	1	Raise Cross Pipe .....	1443	27
47959	1	Lower Cross Pipe .....	1443	27
47960	1	Return Pipe Assembly .....	1443	27
50184	1	R. H. Push Pole Jaw .....	870	14
50185	1	L. H. Push Pole Jaw .....	870	14
51992	2	Cylinder Head .....	693	19