

LaPLANT-CHOATE
PARTS CATALOG

"CARRIMOR"
SCRAPER
MODEL C71

Serial Nos. 1 and Up

LAPLANT  **CHOATE**

MANUFACTURING

Cedar Rapids

CO., INC.

Iowa, U. S. A.

INSTRUCTIONS

LaPLANT-CHOATE MFG. CO., Inc.

IMPORTANT INSTRUCTIONS FOR ORDERING PARTS

Our work will be simplified, your shipment will be expedited, and errors eliminated if these instructions are followed.

1. Give individual or firm name and destination to which shipment is to be made.
2. State clearly whether shipment shall be made by Parcel Post, Express, Air Express, Rail or Motor Freight and whether Collect or Prepaid.
3. List parts required, stating number of pieces wanted, part number, and part name.
4. GIVE SERIAL NUMBER AND MODEL NUMBER OF PRODUCT FOR WHICH PARTS ARE BEING ORDERED.
5. Order all parts from dealer representing your district.
6. Confirm all telephone, telegraph and teletype orders in writing.

Unless the purchaser has an open account with us or has made some previous arrangement, shipments of parts will be made C. O. D. and transportation charges will be added to the price of the purchase where prepaid charges are required.

When small parts such as nuts, washers, cotter pins or special fittings are required, these should be specified in addition to the part number and listed as separate items. If for any reason it is necessary to return parts, the box or package containing same should be labeled with the sender's name and address and charges should be prepaid.

Advise us fully regarding such shipments even though there has been previous correspondence on the subject.

CODE: 1 2 3 4 5 6 7 8 9 0 -
A B J K M N Q W X Y U

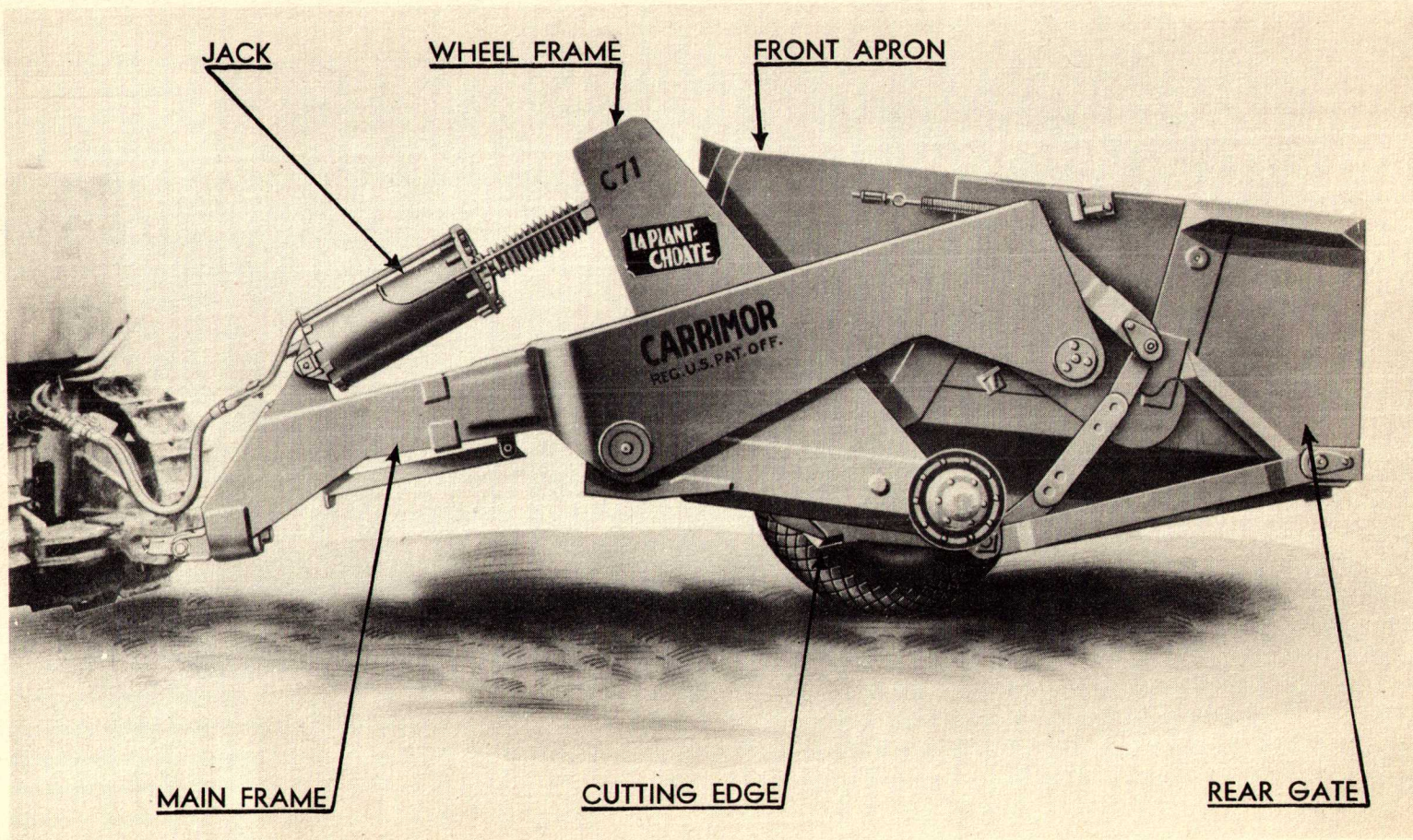
C71 "CARRIMOR" SCRAPER

MASTER PARTS CATALOG

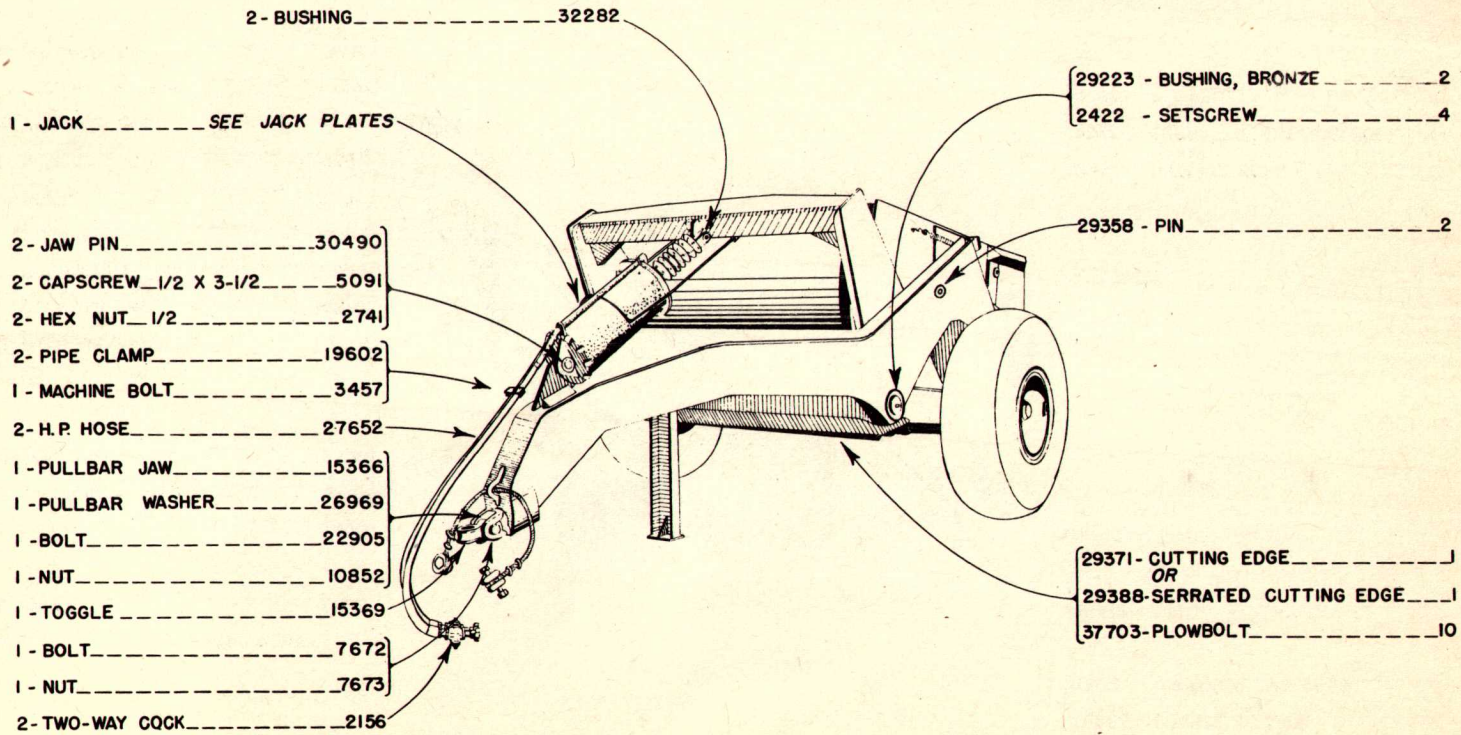
	Starting on Page
General Arrangement	3
Parts Plates:	
Apron, Front	5
Bowl	5
Gate, Rear	8
Hydraulics, Old D7	15
Hydraulics, New D7	17
Hydraulics, D8	23
Jack	13
Main Frame	5
Pumps	27
Tank, D8	24
Valve	25
Wheel	11

LaPLANT-CHOATE MANUFACTURING CO., INC.

Cedar Rapids, Iowa, U. S. A.



GENERAL ARRANGEMENT — C71 "CARRIMOR" SCRAPER



(29306 - 29256)

MAIN FRAME, FRONT APRON & BOWL - C71 SCRAPER

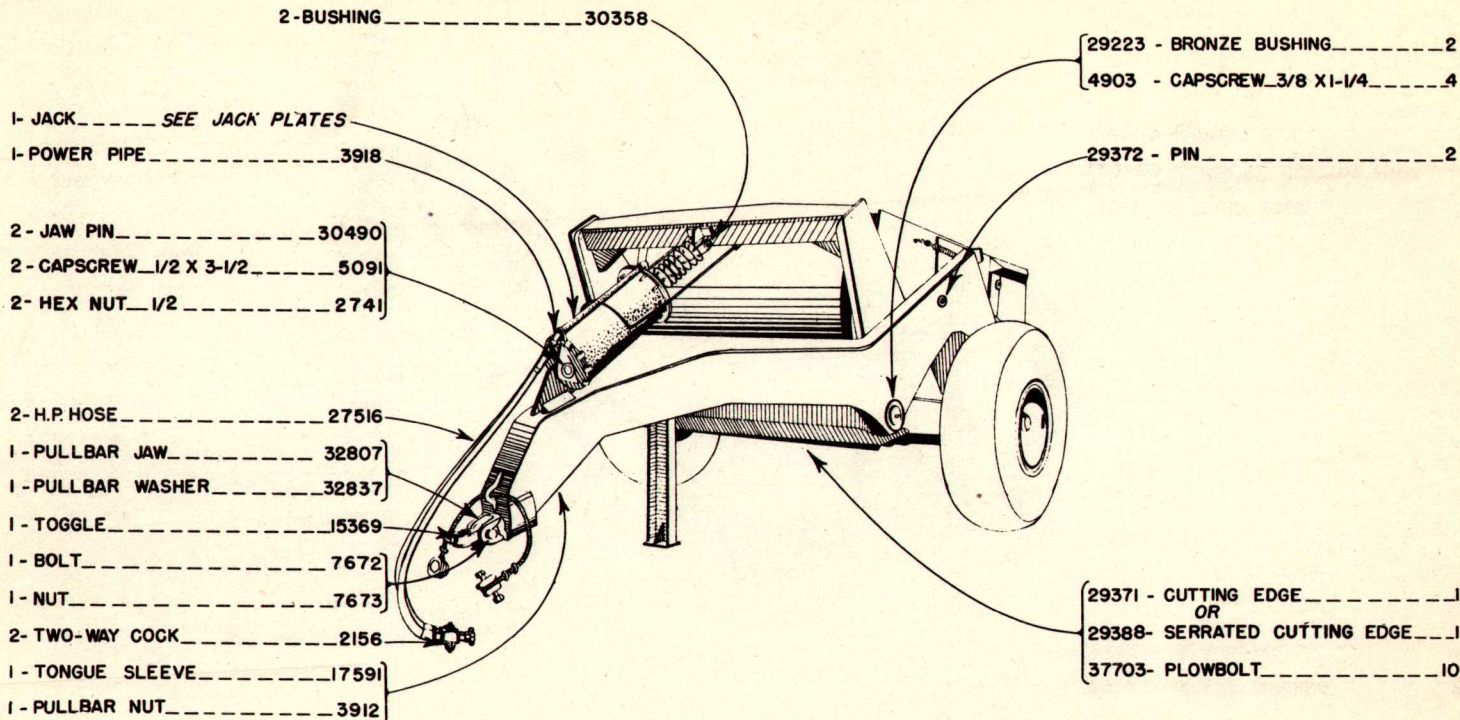
P.1047

MAIN FRAME, APRON AND BOWL

C71 — 1 TO 39, INCL.

MAIN FRAME, APRON AND BOWL

C71 — 40 TO 68, INCL.

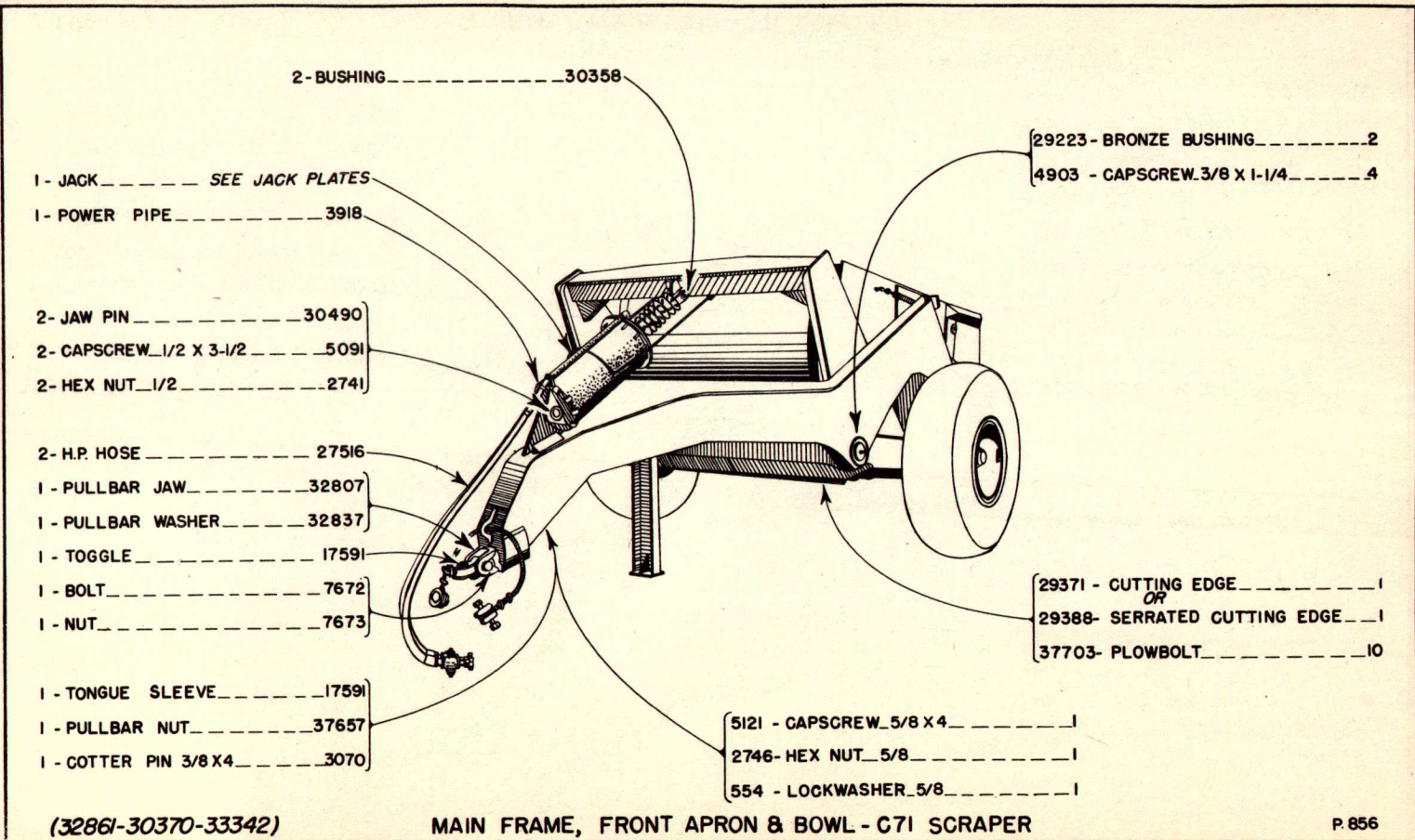


(29519- 29256- 30324)

MAIN FRAME, FRONT APRON & BOWL - C71 SCRAPER

P.1048

7



MAIN FRAME, APRON AND BOWL

C71 — 69 AND UP

REAR GATE AND LINKS

C71 — 1 TO 39, INCL.

2- LATCH SPRING _____ 28662

2- SPRING ANCHOR _____ 680

4- HEX NUT_ 1/2 _____ .3867

2- BRONZE BUSHING _____ 29223

4- SETSCREW _____ 2422

2- LIFTING FRAME AXLE _____ 29230

2- ROLLER ASSEMBLY _____ 29286

INCLUDES THE FOLLOWING:

1- AXLE LOCK _____ 26988

1- BALL BEARING _____ 26991

1- ROLLER SHAFT _____ 29333

1- ROLLER _____ 29287

29358 - APRON HINGE PIN _____ 4

29283-APRON LINK PIN _____ 2

29283-APRON LINK PIN _____ 2

30316- PIVOT PIN CAP _____ 2

5098 - CAPSCREW_ 5/8 X 1-1/2 _____ 4

10944- GREASE FITTING _____ 2

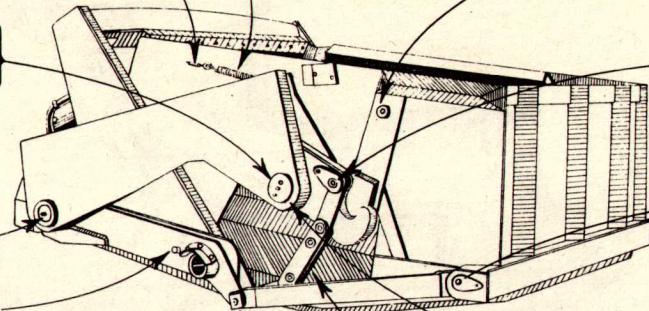
30319 - BOWL PIVOT PIN _____ 2

5109 - CAPSCREW_ 5/8 X 2-1/2 _____ 12

2750 - HEX NUT_ 5/8 _____ 12

29313- TRIP LINK _____ 2

29372- PIN _____ 2



(29499)

REAR GATE & LINKS-C71 SCRAPER

P. 1049

2-LATCH SPRING ----- 32891

2- SPRING ANCHOR ----- 680

4-HEX NUT 1/2 ----- 3867

2-BRONZE BUSHING ----- 29223

4- SETSCREW ----- 2422

2-LIFTING FRAME AXLE ----- 29230

2-ROLLER ASSEMBLY ----- 29286

INCLUDES THE FOLLOWING:

1-AXLE LOCK ----- 26988

1-BALL BEARING ----- 26991

1-ROLLER SHAFT ----- 29333

1-ROLLER ----- 29287

29358 - APRON HINGE PIN ----- 4

29283- APRON LINK PIN ----- 2

29283-APRON LINK PIN ----- 2

30316-PIVOT PIN CAP ----- 2

5098 - CAPSCREW_ 5/8 X 1-1/2 ----- 4

10944-GREASE FITTING ----- 2

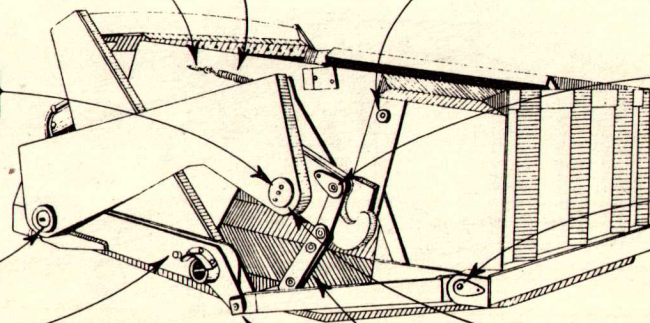
30319- BOWL PIVOT PIN ----- 2

5109 - CAPSCREW_ 5/8 X 2-1/2 ----- 12

2750- HEX NUT_ 5/8 ----- 12

29313- TRIP LINK ----- 2

29372- PIN ----- 2



(30354)

REAR GATE & LINKS - C71 SCRAPER

P.1050

REAR GATE AND LINKS

C71 — 69 AND UP

10

2 - LATCH SPRING ----- 32891

2 - SPRING ANCHOR ----- 680

4 - HEX NUT_V2 ----- 3867

2 - BRONZE BUSHING ----- 29223

4 - SETSCREW ----- 2422

2 - LIFTING FRAME AXLE ----- 29230

2 - ROLLER ASSEMBLY ----- 29286

INCLUDES THE FOLLOWING:

1 - AXLE LOCK ----- 26988

1 - BALL BEARING ----- 26991

1 - ROLLER SHAFT ----- 29333

1 - ROLLER ----- 29287

32878 - APRON HINGE PIN ----- 4

5093 - CAPSCREW_1/2 X 3-3/4 ----- 4

2741 - HEX NUT_1/2 ----- 4

29283 - APRON LINK PIN ----- 2

30316 - PIVOT PIN CAP ----- 2

5098 - CAPSCREW_5/8 X 1-1/2 ----- 4

10944 - GREASE FITTING ----- 2

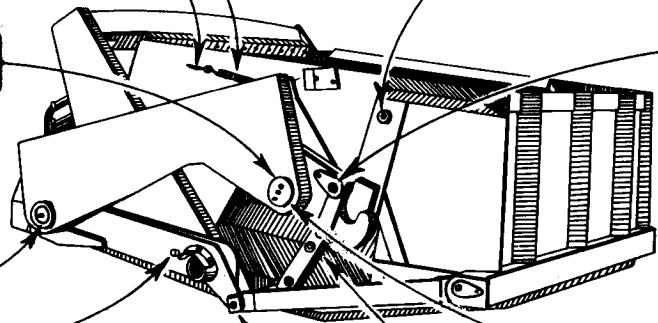
33328 - BOWL PIVOT PIN ----- 2

5109 - CAPSCREW_5/8 X 2-1/2 ----- 12

2750 - HEX NUT_5/8 ----- 12

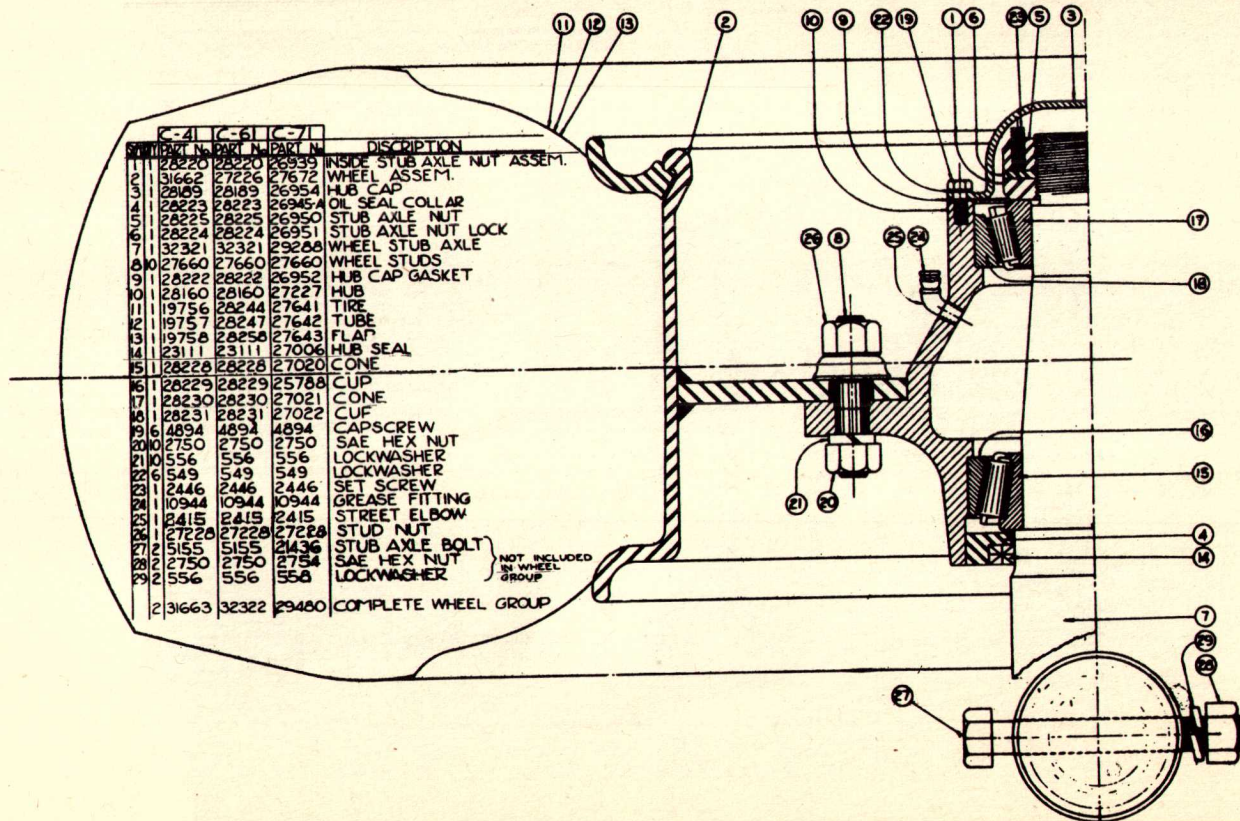
29313 - TRIP LINK ----- 2

29372 - PIN ----- 2



(32881)

REAR GATE & LINKS-C71 SCRAPER

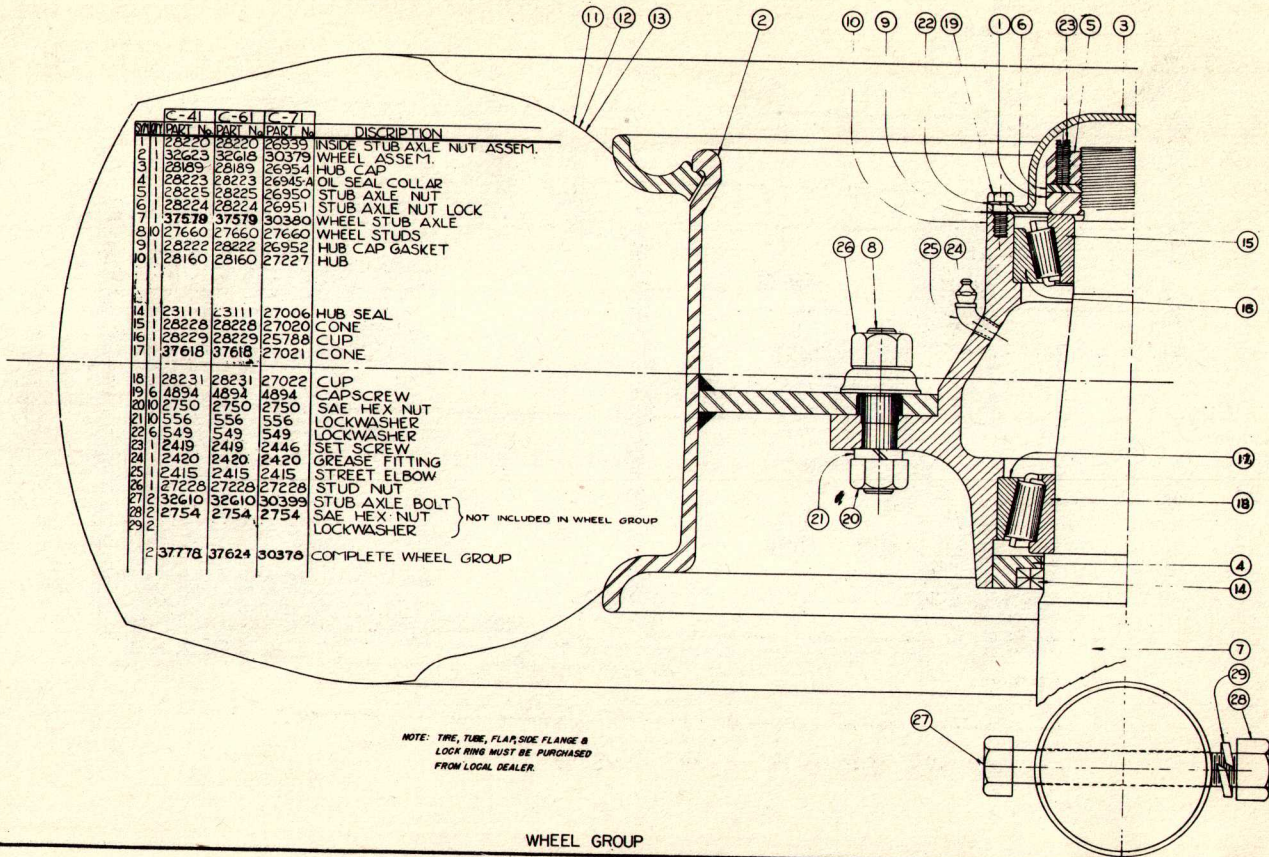


WHEEL

C71 — 1 TO 39, INCL.

WHEEL

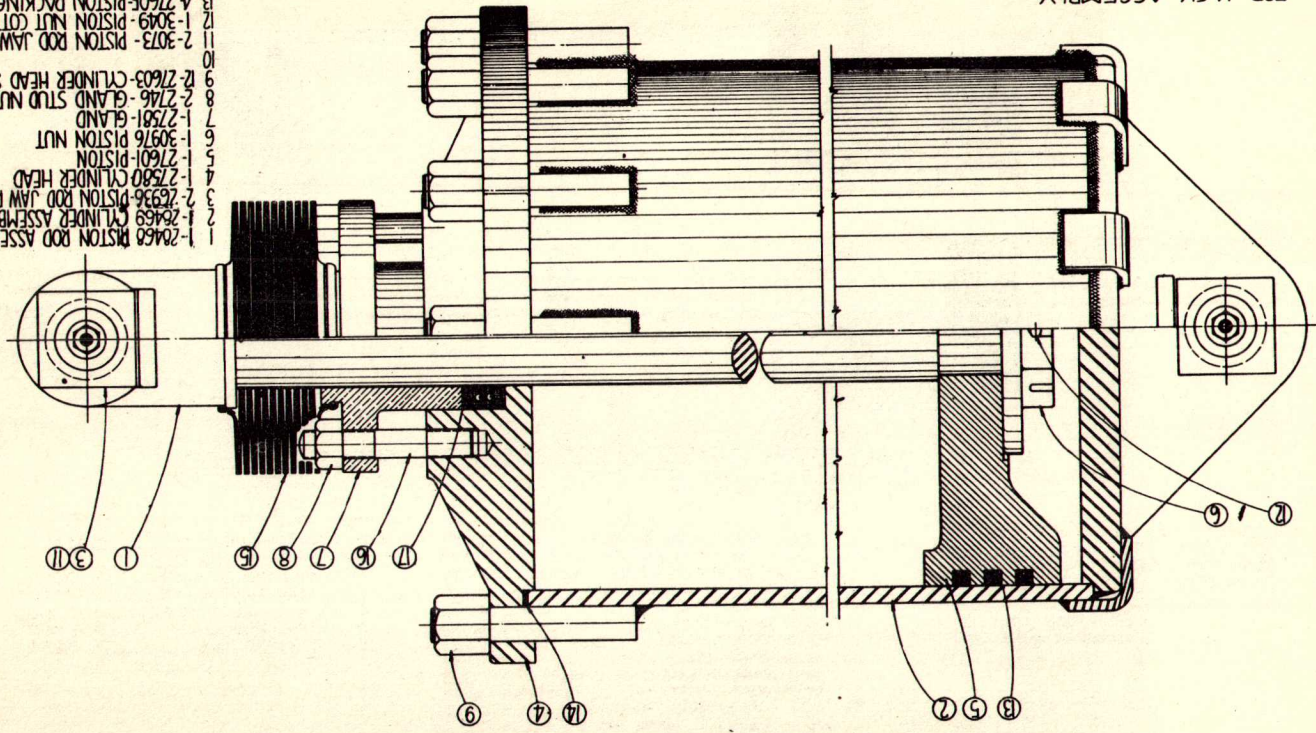
C71 — 40 AND UP



WHEEL GROUP

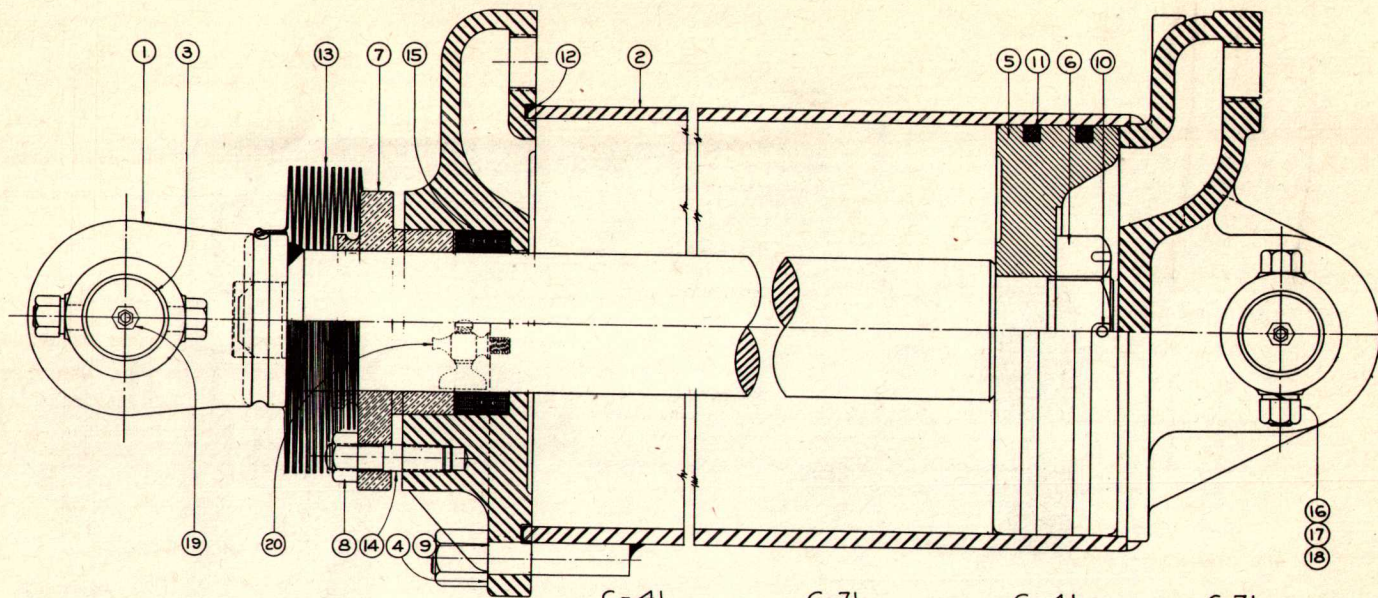
FOR JACK ASSEMBLY
 No. 27577 - 21" STROKE
 ORDER:
 1-1-27578 - PISTON ROD ASSEM.
 2-1-27604 - CYLINDER ASSEM.

JACK ASSEMBLY No. 28467



- 1-20468 PISTON ROD ASSEMBLY
- 2-26469 CYLINDER ASSEMBLY
- 3-27536 PISTON ROD JAW PIN ASSEMBLY
- 4-27580 CYLINDER HEAD
- 5-1-27601 PISTON
- 6-1-30976 PISTON NUT
- 7-1-27581-GLAND
- 8-2-27246-GLAND STUD NUT
- 9-2-27603-CYLINDER HEAD STUD NUT
- 10-2-3073-PISTON ROD JAW PIN COTTER
- 11-1-3049-PISTON NUT COTTER
- 12-2-27605-PISTON PACKING
- 13-4-27606-CYLINDER HEAD GASKET
- 14-1-27658-BELLOWS
- 15-1-27658-PISTON
- 16-2-30506-STUD
- 17-1-27583-PACKING ASSEMBLY
- 18-1-9299-1/8 PCT COCK

589



NOTE:
ALL PARTS FOR C-41 & C-61
ARE THE SAME WITH THESE
EXCEPTIONS:

- C-61
1-1-30488- PISTON ROD ASSEM.
2-1-30497- CYLINDER ASSEM.


- 30502 - JACK ASSEM. COMP. FOR C-71 & C-73
30500 - JACK ASSEM. COMP. FOR C-41
30501 - JACK ASSEM. COMP. FOR C-61

C-41	C-71
1-1-30487- PISTON ROD ASSEM.....	1-30488
2-1-30496- CYLINDER ASSEM.....	1-30493
3-2-30490- PISTON ROD JAW PIN.....	2-30490
4-1-32601- CYLINDER HEAD.....	1-32600
5-1-32598- PISTON.....	1-32603
6-1-30499- PISTON NUT.....	1-30499
7-1-32599- GLAND.....	1-32599
8-3-2746- GLAND STUD NUT.....	3-2746
9-8-27603- CYL HEAD STUD NUT.....	12-27603
10-1-3049- PISTON NUT COTTER PIN.....	1-3049
11-2-27034- PISTON PACKING.....	2-27605
12-1-26928- CYL HEAD GASKET.....	1-27076
13-1-30489- BELLOWS.....	1-30489

C-41	C-71
14-3-30491- GLAND STUD.....	3-30491
15-1-30492- PACKING ASSEM.....	1-30492
16-2--5091- SAE CAPSCREW.....	2--5091
17-2--2741- SAE HEX NUT.....	2--2741
18-2--552- LOCKWASHER.....	2--552
19-2--2987- ZERK.....	2--2987
20-1--9299- PETCOCK.....	1--9299

JACK ASSEMBLY

P.637

- 
- 47796 - REAR PIPE SUPPORT ___ 1
 INCLUDES:
 27692 - J CLAMP ___ 2
 4956 - CAPSCREW_3/4 X 2 ___ 2
 3866 - SQUARE NUT_1/2 ___ 2
 556 - LOCKWASHER_3/4 ___ 2
 2104 - PIPE PLUG ___ 2
 27516 - H.P. HOSE ___ 2

- 26454 - OIL STRAINER ___ 1
 26450 - FILTER TUBE CAP ___ 1
 6949 - L.P. HOSE ___ 1
 2970 - CLAMP ___ 2
 3022 - CAPSCREW_5/16 X 1-1/2 ___ 2
 2744 - HEX NUT_5/16 ___ 2
 19925 - VALVE ___ 1
 (SEE PLATE 511)

- 1 - BREATHER TUBE MESH_26453
 1 - BREATHER MESH_26459

- 27678 - H.P. HOSE ___ 1
 1207 - L.P. HOSE ___ 1
 2970 - CLAMP ___ 2
 3022 - CAPSCREW_5/16 X 1-1/2 ___ 2
 2744 - HEX NUT_5/16 ___ 2

- 1 - LOWER REAR PIPE_47798
 1 - RAISE REAR PIPE_47797
 1 - TANK_26471

- 27684 - BASE PLATE ___ 1

SCRAPER HYDRAULIC CONTROLS FOR D-7 TRACTOR (OLD)

P.1181

16

- 1-PIPE BRACKET ASSEM.-----27688
- CONSISTS OF THE FOLLOWING:
- 1-MACHINE BOLT-----3448
- 1-CLAMP-----19602
- 1-PIPE SUPPORT-----27689
- 2-USS CAPSCREW 3/8 X 1-1/4.4903

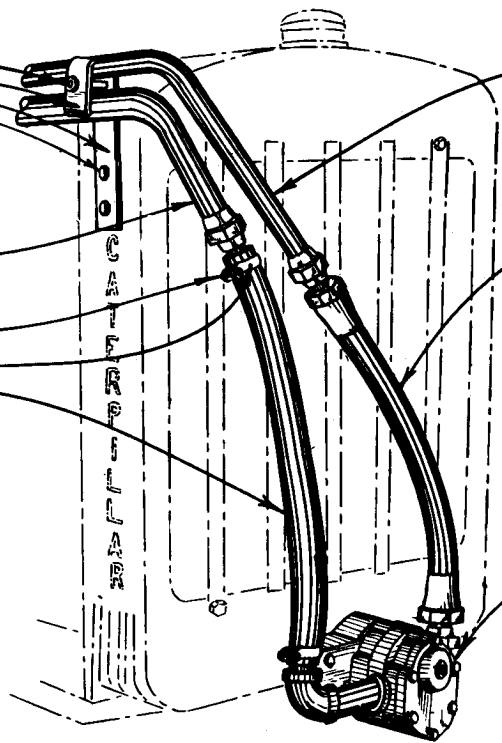
1- SUCTION PIPE ----- 27682

- 2-SAE CAPSCREW 5/16 X 1-1/2-----3022
- 2-SAE HEX NUT 5/16-----2744
- 2-CLAMP-----2970
- 1- L. P. HOSE-----6946

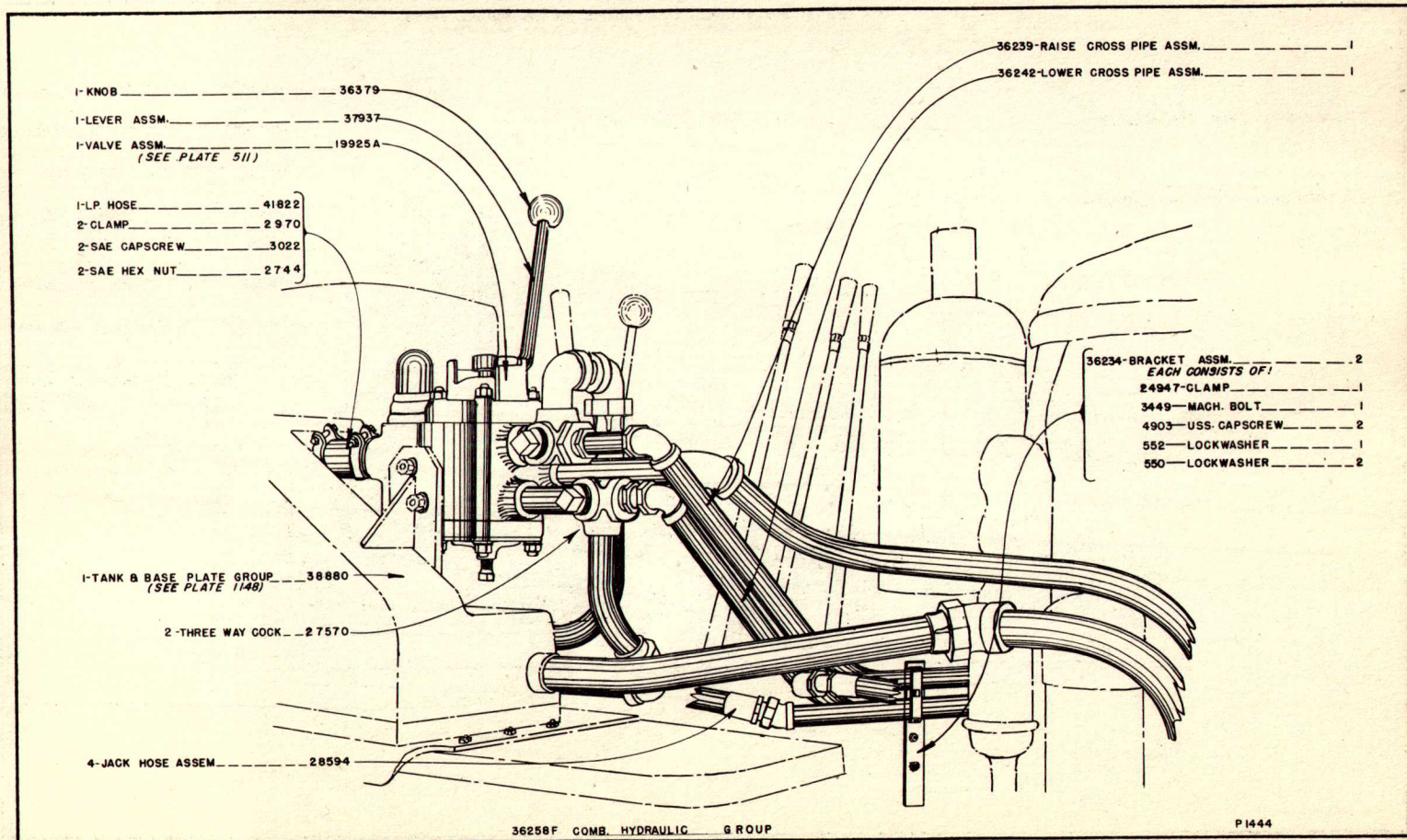
27680- POWER PIPE -----

27678- H. P. HOSE ASSEM.-----

PUMP GROUP -----
(SEE PUMP PLATES)



27560, 27560A, 27560B & 27560C PACKING BOX GROUPS FOR D-7 TRACTOR



HYDRAULICS, NEW D7

C71 — 1 AND UP

18

SEE PUMP PLATES

- 1—L.P. HOSE 6962
- 2—CLAMP 2970
- 2—SAE CAPSCREW 3022
- 2—SAE HEX NUT 2744

1—POWER PIPE ASSEM. 37545

1—SUCTION PIPE 37549

- 1—SAE CAPSCREW 5098
- 1—SAE HEX NUT 2746
- 1—LOCKWASHER 554

1—CLAMP 36371

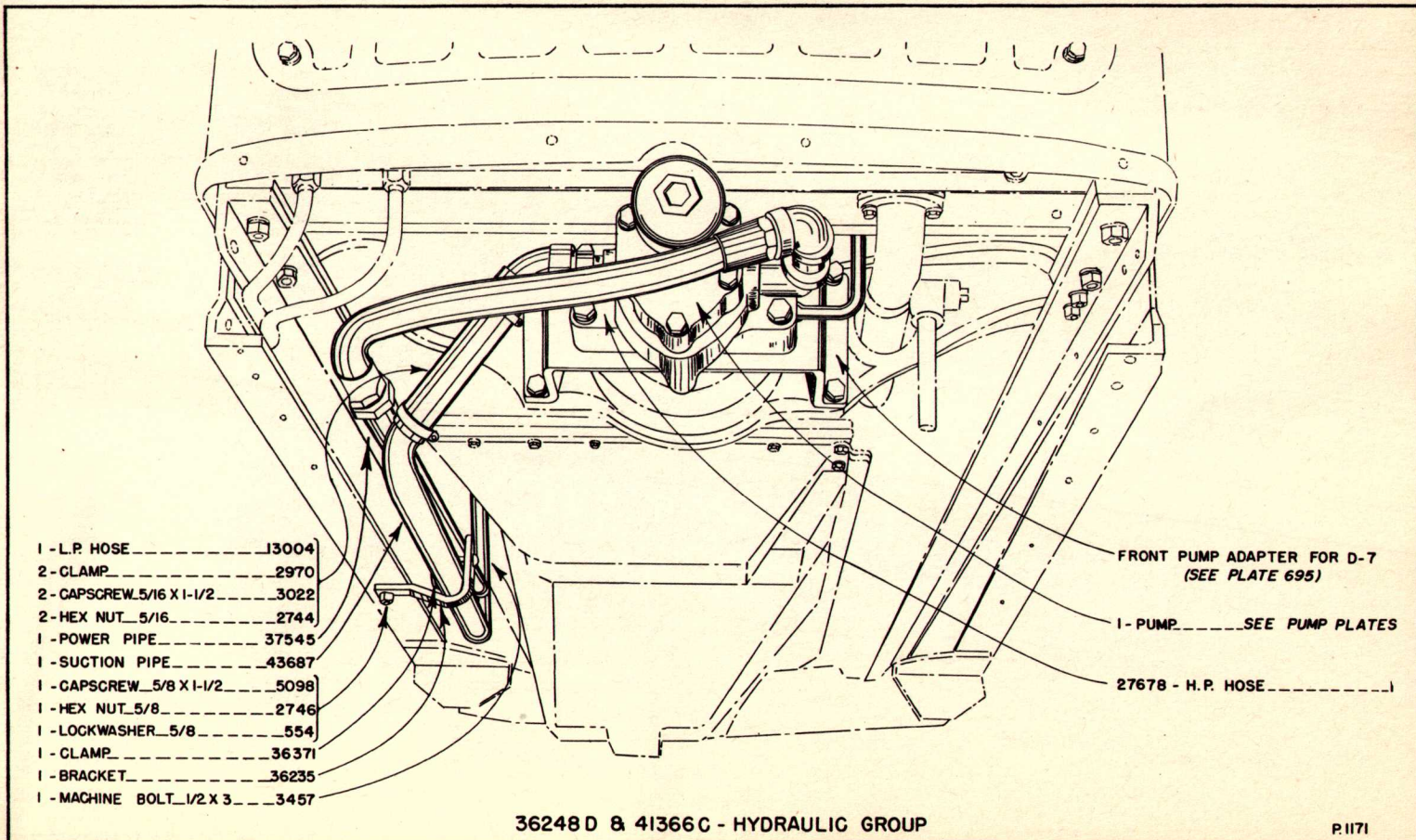
1—BRACKET 36235

1—MACHINE BOLT 3457

FRONT PUMP ADAPTER FOR D-7
SEE PLATE 995

27678—H.P. HOSE ASSEMBLY.....1

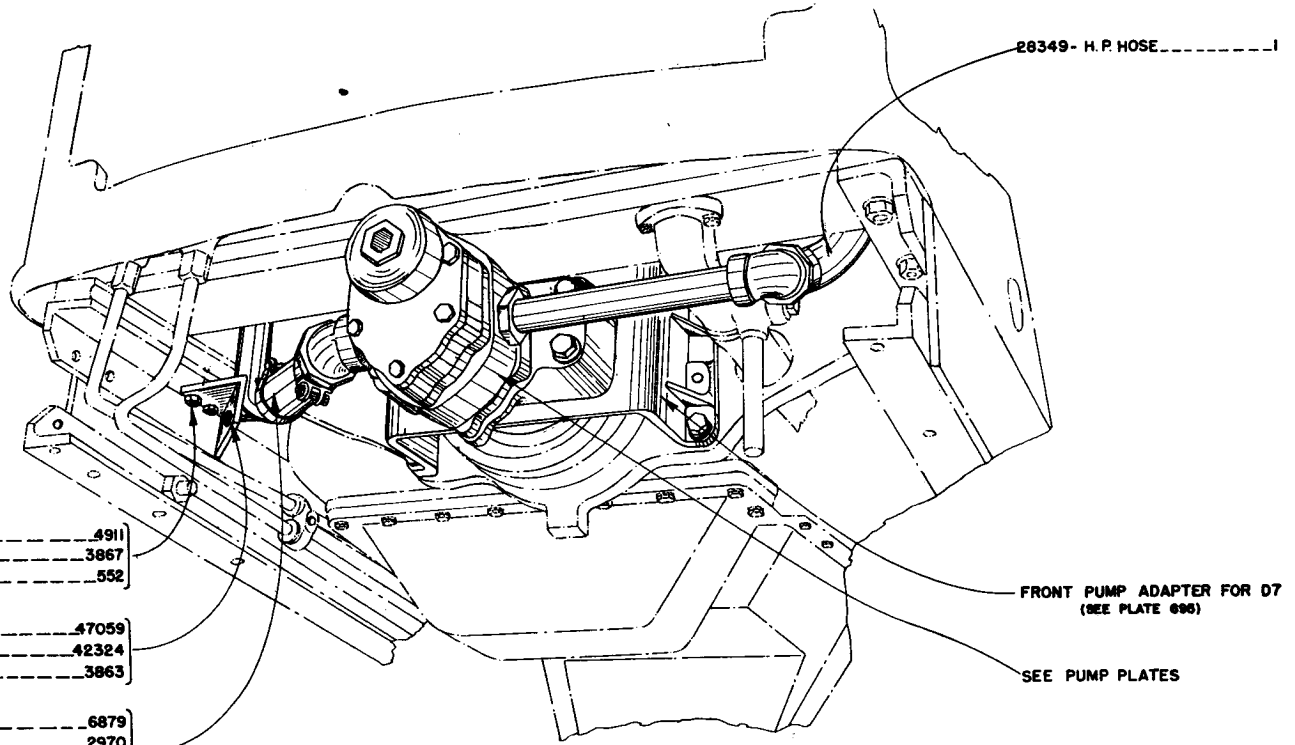
36248, 36248A, 36248B & 41366A - HYDRAULIC GROUP FOR D-7



HYDRAULICS, NEW D7

C71 — 91 TO 103, INCL.

20



- 2-USS BOLT.....4911
- 2-USS NUT.....3867
- 2-LOCKWASHER.....552

- 1-BRACKET.....47059
- 1-J BOLT.....42324
- 1-USS NUT.....3863

- 1-L.P. HOSE.....6879
- 2-CLAMP.....2970
- 2-SAE BOLT.....3022
- 2-SAE NUT.....2744

26349- H.P. HOSE.....1

FRONT PUMP ADAPTER FOR D7
(SEE PLATE 696)

SEE PUMP PLATES

36248F HYDRAULIC GROUP

P.1403

1-U BOLT _____ 47078
 2-USS NUT _____ 3863
 2-LOCKWASHER _____ 550
 (PART OF GROUP 47043)
 1-BRACE _____ 47060

1-UNION _____ 47524

1-POWER PIPE _____ 47051

1-U BOLT _____ 40561
 2-USS NUT _____ 3867
 2-LOCKWASHER _____ 552
 (PART OF GROUP 47041)

1-BRKT GROUP _____ 47041

1-BRKT. ASSEM. _____ 47058
 (PART OF GROUP 47041)

2-BOLT _____ 4911
 2-USS NUT _____ 3867
 2-LOCKWASHER _____ 552
 (PART OF GROUP 47041)

2-J BOLT _____ 27692
 2-HEX NUT _____ 3867
 2-CAPSCREW _____ 4904
 2-LOCKWASHER _____ 550
 2-FLATWASHER _____ 576
 (PART OF GROUPS 47086 & 47087)

1-L H CROSS PIPE BRKT GROUP _____ 47087

1-R H CROSS PIPE BRKT GROUP _____ 47086

47043-BRACE GROUP _____ 1

20453-U BOLT _____ 1
 3867-USS NUT _____ 2
 552-LOCKWASHER _____ 2
 (PART OF GROUP 47043)

47049-SUCTION PIPE _____ 1

47525-UNION _____ 1

47048-SUCTION PIPE _____ 1

47050-POWER PIPE _____ 1

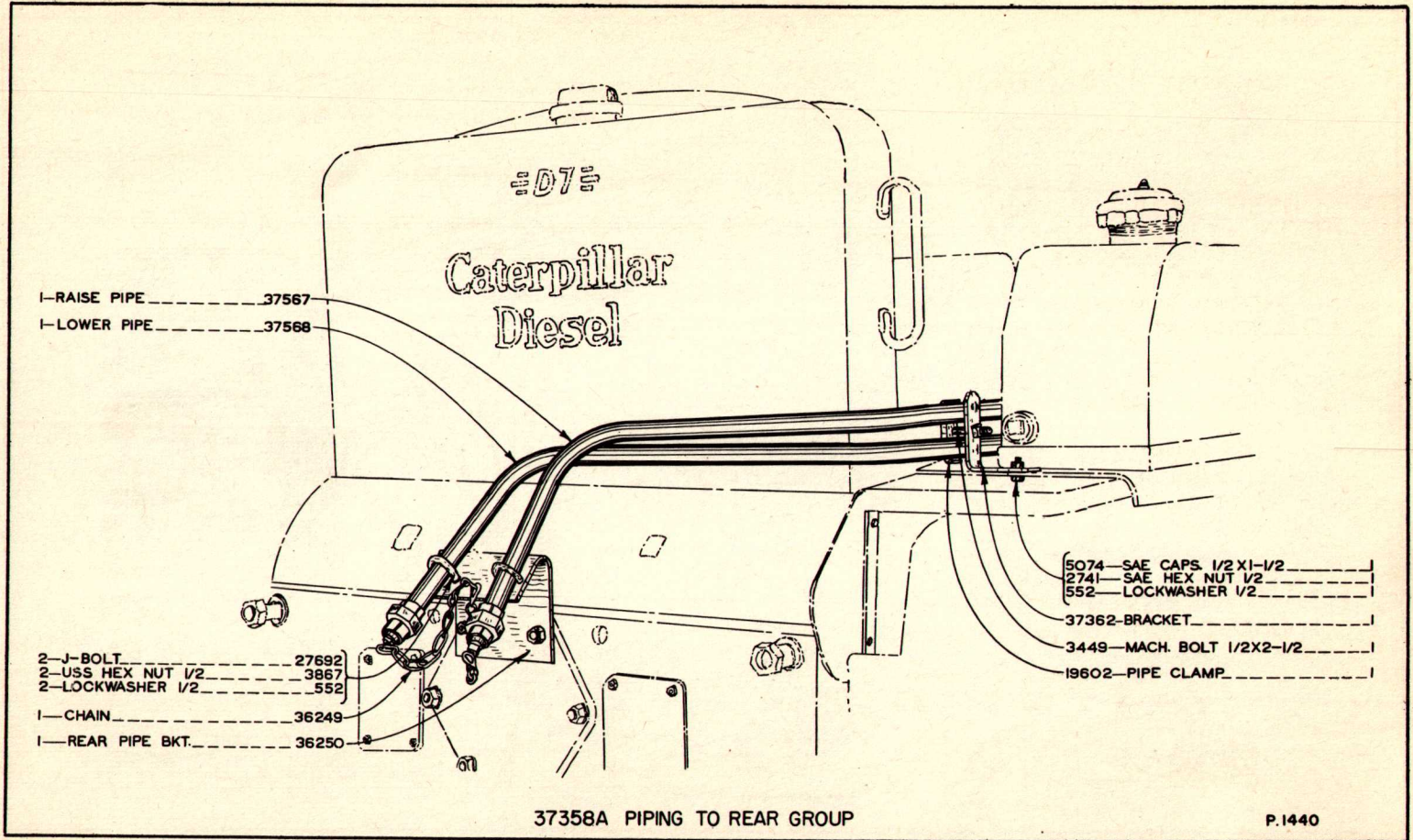
47504-UNION ELBOW _____ 1

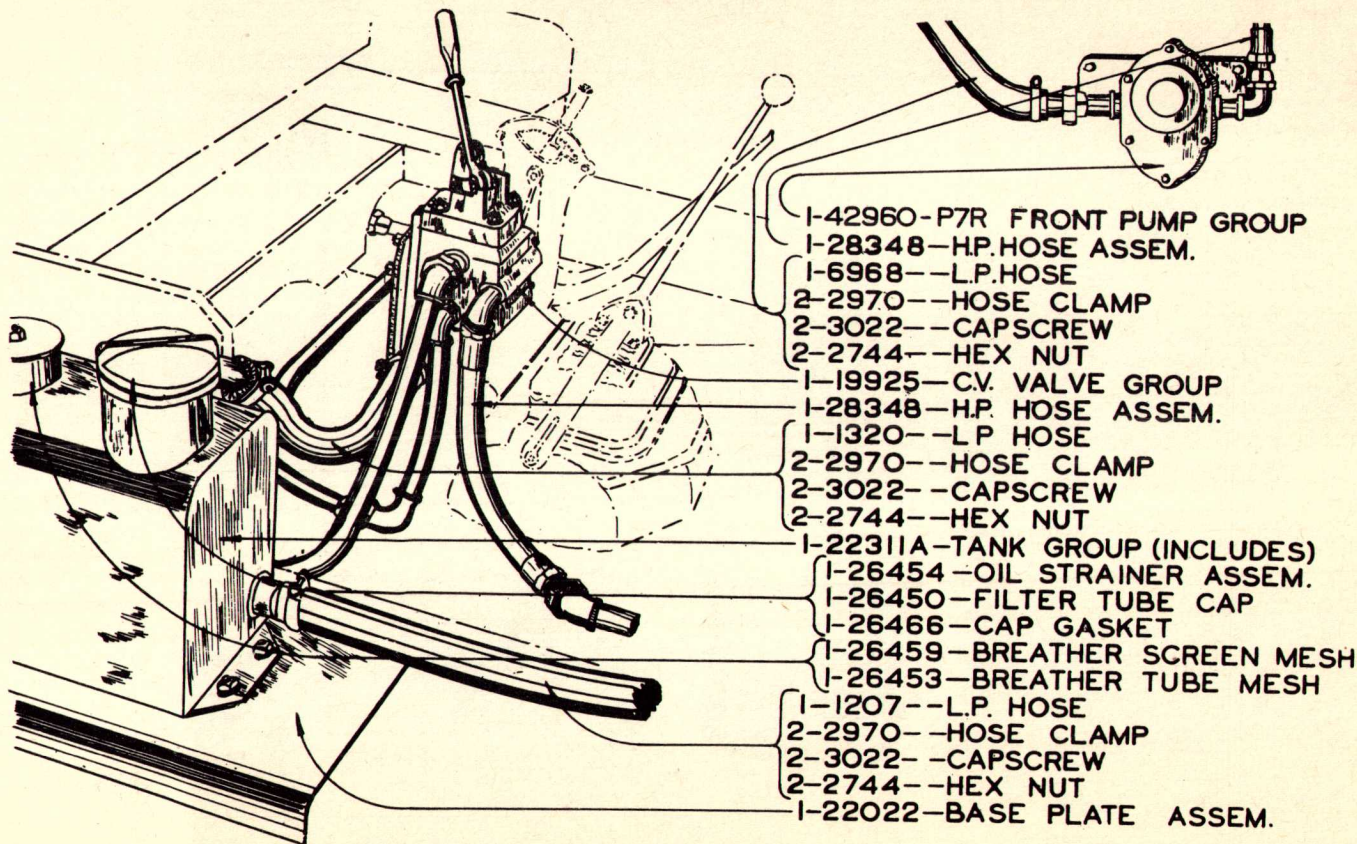
36248F HYDRAULIC GROUP FOR NEW D7

P. 1401

HYDRAULICS, NEW D7

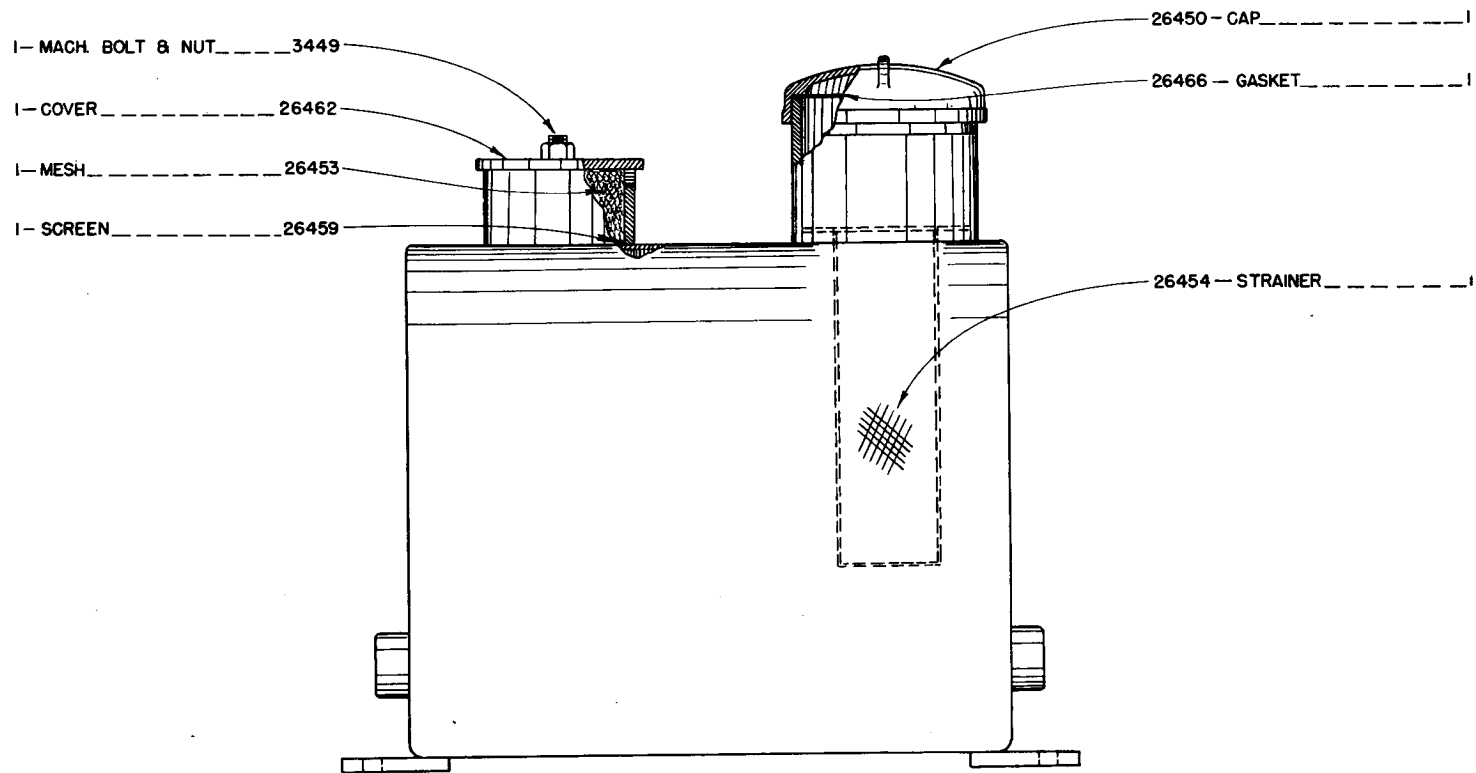
C71 — 104 AND UP





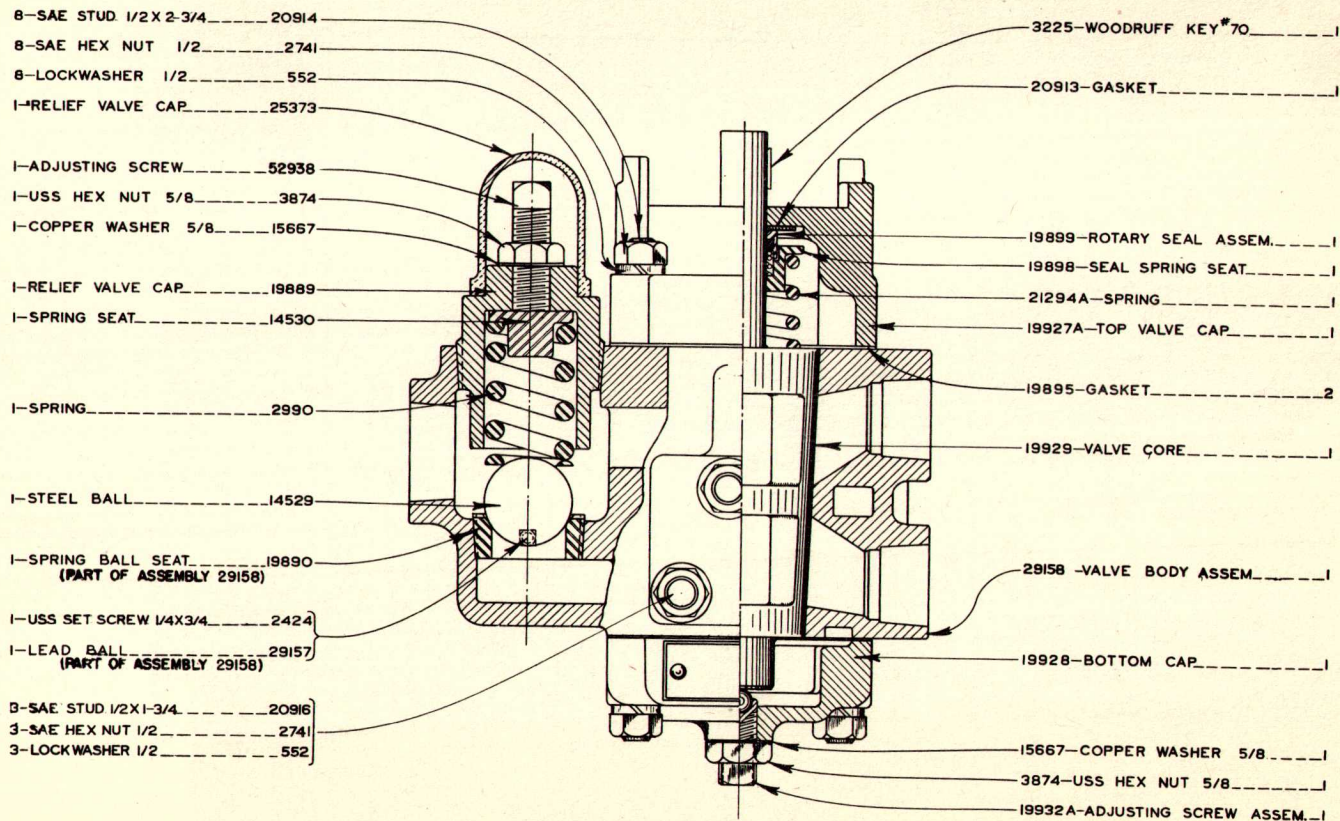
SCRAPER PIPING FOR D8

1180



24

22311A TANK GROUP



19925A C. V. VALVE GROUP

511

VALVE

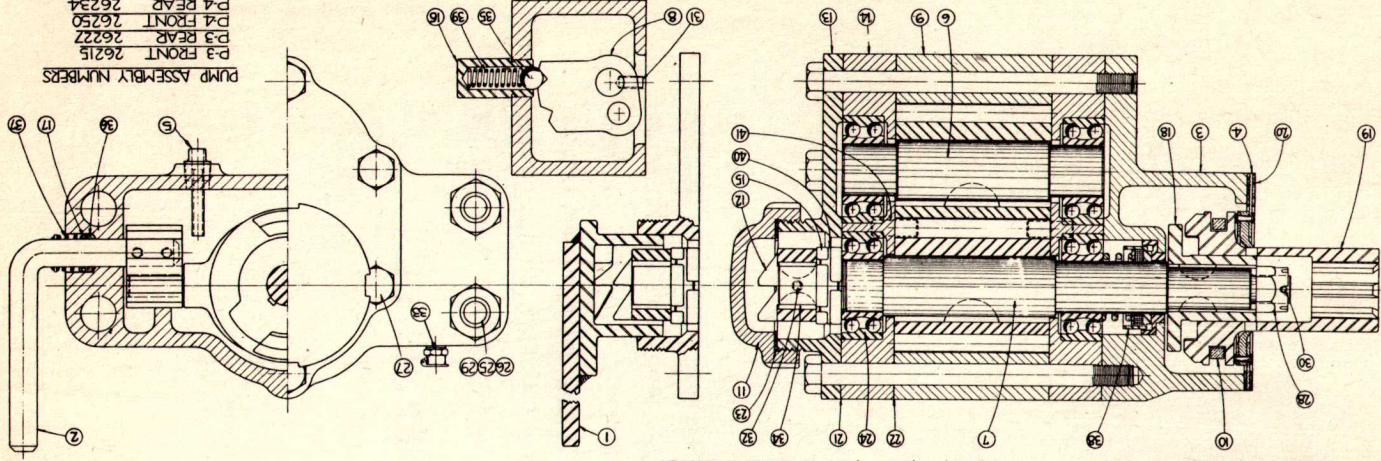
C71 — 1 AND UP

PUMP PLATES

NOTE: Repair parts are sold by LaPlant-Choate Manufacturing Company for servicing all pump models shown on the following pages. When you wish to purchase a complete pump, however, order the current model (P7AR Pump Group No. 42323A), regardless of the model now being used on your equipment.

SYMBOL	RECD	NUMBER	DESCRIPTION
		1	CLUTCH HANDLE ASSEMBLY
		2	CLUTCH HOUSING ASSEMBLY-REPLACEABLE PARTS
		3	CLUTCH HOUSING SEAL ASSEMBLY
		4	ROTARY SEAL SEAT
		5	GASKET & COUPLING SEAL ASSEMBLY
		6	DRAIN PLUG ASSEMBLY
		7	DRIVE SHAFT & GEAR ASSEMBLY
		8	DETENT BACK
		9	INNER GEAR HOUSING
		10	CLUTCH FORK
		11	OUTER FAINING CAP COVER
		12	DRIVE SHAFT CRANK JAW
		13	OUTER BEARING CAP
		14	BEARING HOUSING
		15	DRIVE SHAFT LOCK NUT
		16	DETENT SPRING CASE
		17	PACKING SPRING WASHER
		18	CLUTCH HUB
		19	CLUTCH GEAR COUPLING
		20	CLUTCH GEAR COUPLING
		21	FRONT HOUSING GASKET
		22	GEAR HOUSING GASKET
		23	FRONT HOUSING GASKET
		24	PUMP BEARING
		25	PUMP TO TRACTOR STUD
		26	SAFE HEX NUT
		27	OUTER BEARING CAP CAPSCREW
		28	DRIVE SHAFT NUT
		29	PUMP TO TRACTOR LOCKWASHER
		30	COTTER PIN
		31	SET SCREW
		32	OIL FITTING
		33	WOODRUFF KEY
		34	DETENT SPRING BALL
		35	CLUTCH SHAFT PACKING
		36	PACKING SPRING
		37	ROTARY SEAL ASSEM (INCLUDES SPRING)
		38	DETENT SPRING
		39	LOCKWASHER
		40	DETENT SPRING
		41	DRIVE SHAFT LOCK NUT
		42	PACKING SPRING WASHER
		43	CLUTCH HUB
		44	CLUTCH HOUSING SEAL ASSEMBLY
		45	CLUTCH HANDLE ASSEMBLY
		46	CLUTCH HOUSING ASSEMBLY-REPLACEABLE PARTS
		47	CLUTCH HOUSING SEAL ASSEMBLY
		48	CLUTCH HANDLE ASSEMBLY
		49	CLUTCH HUB

SYMBOL	RECD	NUMBER	DESCRIPTION
		1	CLUTCH GEAR COUPLING
		2	FRONT HOUSING GASKET
		3	CLUTCH HOUSING SEAL ASSEMBLY
		4	DRIVE SHAFT & GEAR ASSEMBLY
		5	CLUTCH HANDLE ASSEMBLY
		6	CLUTCH HOUSING ASSEMBLY-REPLACEABLE PARTS
		7	CLUTCH HOUSING SEAL ASSEMBLY
		8	CLUTCH HANDLE ASSEMBLY
		9	CLUTCH HUB
		10	CLUTCH FORK
		11	OUTER FAINING CAP COVER
		12	DRIVE SHAFT CRANK JAW
		13	OUTER BEARING CAP
		14	BEARING HOUSING
		15	DRIVE SHAFT LOCK NUT
		16	DETENT SPRING CASE
		17	PACKING SPRING WASHER
		18	CLUTCH HUB
		19	CLUTCH GEAR COUPLING
		20	CLUTCH GEAR COUPLING
		21	FRONT HOUSING GASKET
		22	GEAR HOUSING GASKET
		23	FRONT HOUSING GASKET
		24	PUMP BEARING
		25	PUMP TO TRACTOR STUD
		26	SAFE HEX NUT
		27	OUTER BEARING CAP CAPSCREW
		28	DRIVE SHAFT NUT
		29	PUMP TO TRACTOR LOCKWASHER
		30	COTTER PIN
		31	SET SCREW
		32	OIL FITTING
		33	WOODRUFF KEY
		34	DETENT SPRING BALL
		35	CLUTCH SHAFT PACKING
		36	PACKING SPRING
		37	ROTARY SEAL ASSEM (INCLUDES SPRING)
		38	DETENT SPRING
		39	LOCKWASHER
		40	DETENT SPRING
		41	DRIVE SHAFT LOCK NUT
		42	PACKING SPRING WASHER
		43	CLUTCH HUB
		44	CLUTCH HOUSING SEAL ASSEMBLY
		45	CLUTCH HANDLE ASSEMBLY
		46	CLUTCH HOUSING ASSEMBLY-REPLACEABLE PARTS
		47	CLUTCH HOUSING SEAL ASSEMBLY
		48	CLUTCH HANDLE ASSEMBLY
		49	CLUTCH HUB



PUMP ASSEMBLY NUMBERS

- P-3 FRONT 26215
- P-3 REAR 26222
- P-4 FRONT 26250
- P-4 REAR 26234
- P-4 REAR 30353 572

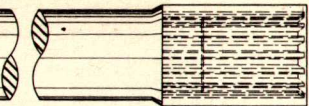
SYMBOL	RECD	NUMBER	DESCRIPTION
		1	CLUTCH HANDLE ASSEMBLY
		2	CLUTCH HOUSING ASSEMBLY-REPLACEABLE PARTS
		3	CLUTCH HOUSING SEAL ASSEMBLY
		4	DRIVE SHAFT & GEAR ASSEMBLY
		5	CLUTCH HANDLE ASSEMBLY
		6	CLUTCH HOUSING ASSEMBLY-REPLACEABLE PARTS
		7	CLUTCH HOUSING SEAL ASSEMBLY
		8	CLUTCH HANDLE ASSEMBLY
		9	CLUTCH HUB
		10	CLUTCH FORK
		11	OUTER FAINING CAP COVER
		12	DRIVE SHAFT CRANK JAW
		13	OUTER BEARING CAP
		14	BEARING HOUSING
		15	DRIVE SHAFT LOCK NUT
		16	DETENT SPRING CASE
		17	PACKING SPRING WASHER
		18	CLUTCH HUB
		19	CLUTCH GEAR COUPLING
		20	CLUTCH GEAR COUPLING
		21	FRONT HOUSING GASKET
		22	GEAR HOUSING GASKET
		23	FRONT HOUSING GASKET
		24	PUMP BEARING
		25	PUMP TO TRACTOR STUD
		26	SAFE HEX NUT
		27	OUTER BEARING CAP CAPSCREW
		28	DRIVE SHAFT NUT
		29	PUMP TO TRACTOR LOCKWASHER
		30	COTTER PIN
		31	SET SCREW
		32	OIL FITTING
		33	WOODRUFF KEY
		34	DETENT SPRING BALL
		35	CLUTCH SHAFT PACKING
		36	PACKING SPRING
		37	ROTARY SEAL ASSEM (INCLUDES SPRING)
		38	DETENT SPRING
		39	LOCKWASHER
		40	DETENT SPRING
		41	DRIVE SHAFT LOCK NUT
		42	PACKING SPRING WASHER
		43	CLUTCH HUB
		44	CLUTCH HOUSING SEAL ASSEMBLY
		45	CLUTCH HANDLE ASSEMBLY
		46	CLUTCH HOUSING ASSEMBLY-REPLACEABLE PARTS
		47	CLUTCH HOUSING SEAL ASSEMBLY
		48	CLUTCH HANDLE ASSEMBLY
		49	CLUTCH HUB

NOTE WHEN PARTS FOR P-3 ARE BEING ORDERED ALL PARTS ARE AS THEY ARE LISTED AT THE LEFT FOR THE P-4 WITH THE P-4 REAR PUMP SAME AS ALL PARTS FOR 30353

EXCEPTION OF THE FOLLOWING:
CLUTCH HANDLE ASSEMBLY
CLUTCH HOUSING ASSEMBLY
CLUTCH HOUSING SEAL ASSEMBLY
CLUTCH HOUSING ASSEMBLY-REPLACEABLE PARTS

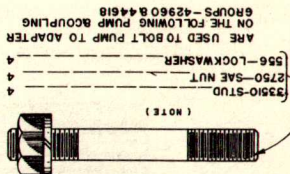
STANDARD WITH EXCEPTION
OF FOLLOWING:
CLUTCH HANDLE ASSEMBLY
CLUTCH HOUSING ASSEMBLY
CLUTCH HOUSING SEAL ASSEMBLY
CLUTCH HOUSING ASSEMBLY-REPLACEABLE PARTS

MISCELLANEOUS PUMP PARTS

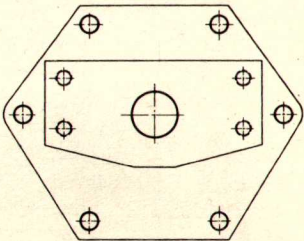


44316—REAR POWER TAKE OFF SHAFT ASSEMBLY
FOR USE WITH NEW D-8 TRACTOR

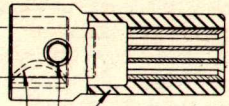
42245—REAR POWER TAKE OFF SHAFT ASSEMBLY
FOR USE WITH NEW D-7 TRACTOR



38309—REAR ADAPTER PLATE ASSEMBLY
FOR USE WITH
NEW D-8 & D-7 TRACTORS

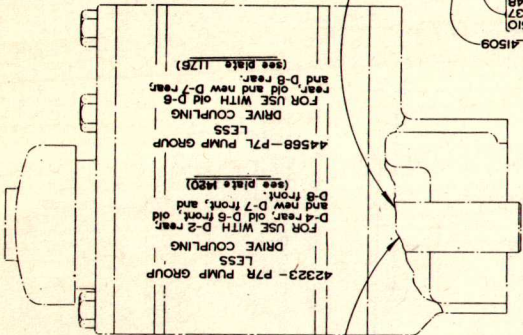


(NOTE)
38310-STD
2750—S&E NUT
556—LOCKWASHER
4
4
4
ARE USED TO BOLT PUMP TO ADAPTER
ON THE FOLLOWING PUMP MOUNTING
GROUPS—42960 & 44618



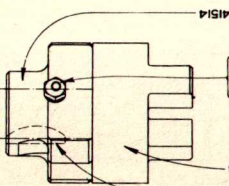
42960—FRONT PUMP GROUP WITH SPLINED
POWER TAKE OFF COMPLETE
FOR USE WITH
rear mounted D-2 & D-4, front OLD D-5, OLD D-7,
AND D-8 TRACTORS.
44618—REAR PUMP GROUP WITH SPLINED
POWER TAKE OFF COMPLETE
used with old D-8 rear, old and new D-7 rear,
and D-8 rear.

- I-KEY-----41509
- I-BOLT-----41510
- I-NUT-----2737
- I-LOCKWASHER-----548
- I-ASSEMBLY-----41516



42323—P7R PUMP GROUP
LESS
DRIVE COUPLING
FOR USE WITH D-2 rear, old
D-4 rear, old D-5 front, old
D-8 front. (see plate 1489)

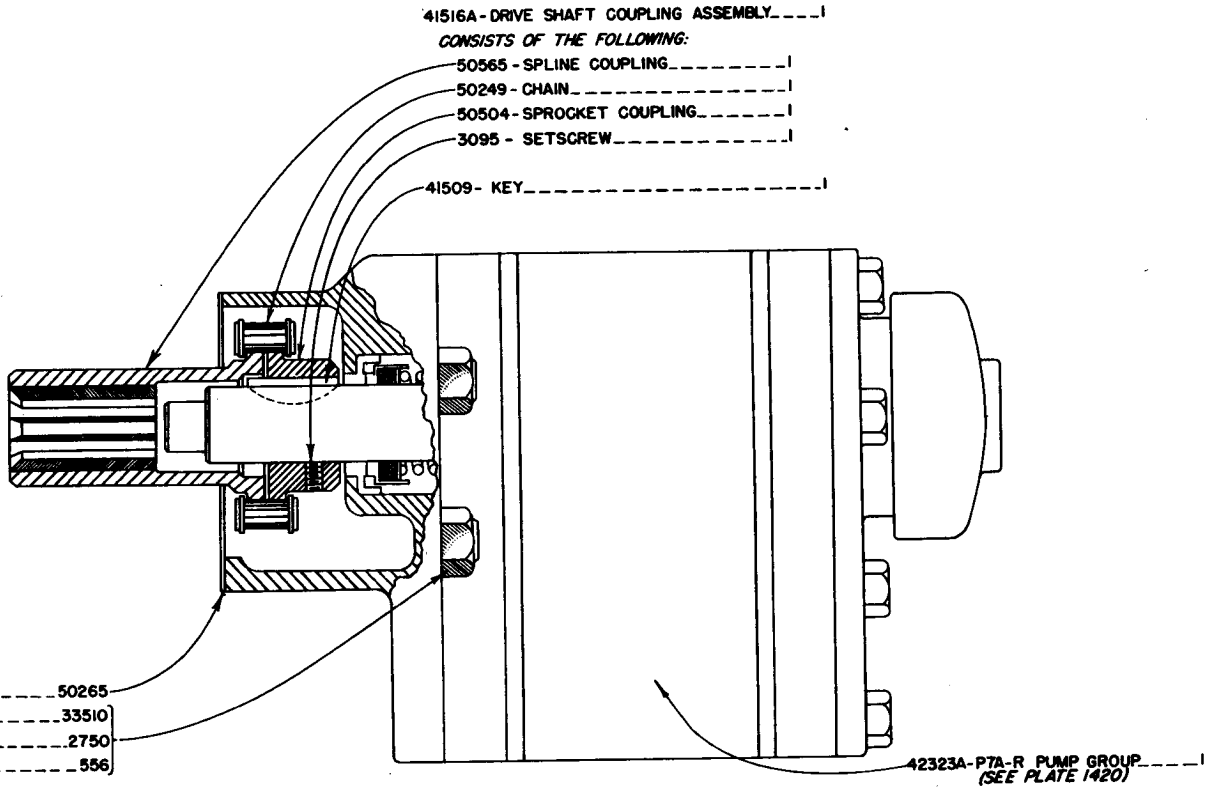
44568—P7L PUMP GROUP
LESS
DRIVE COUPLING
FOR USE WITH old D-8
rear and new D-7 rear,
and D-8 rear. (see plate 1175)



44457—FRONT PUMP & COUPLING GROUP COMPLETE
FOR USE WITH
NEW D-7 TRACTORS.

- I-KEY-----41509
- I-COUPLING-----41498
- I-BOLT-----41510
- I-NUT-----2737
- I-LOCKWASHER-----548
- I-COUPLING HUB-----41514

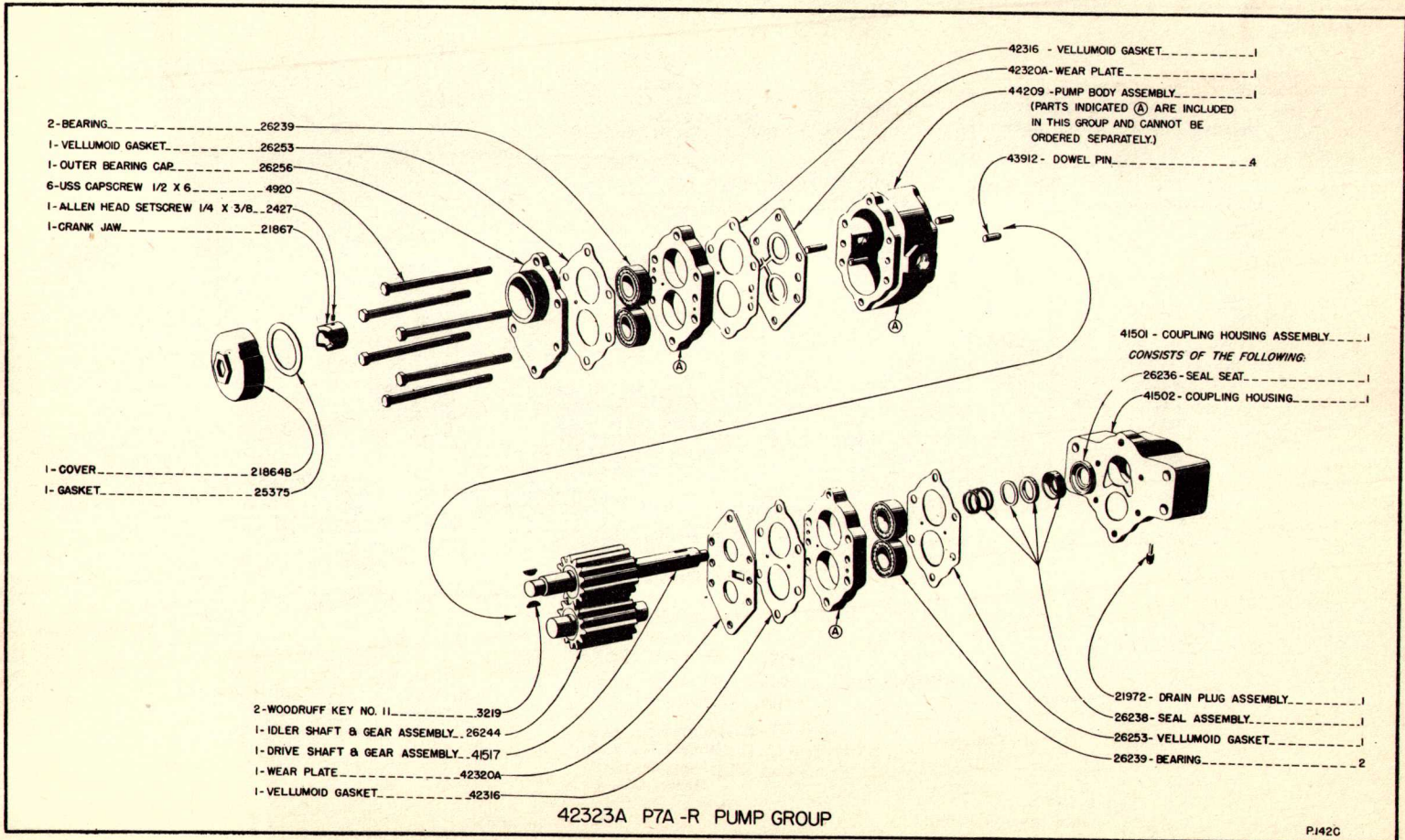
PUMP



(42960-B)

P7A-R PUMP & COUPLING GROUP

P.1419



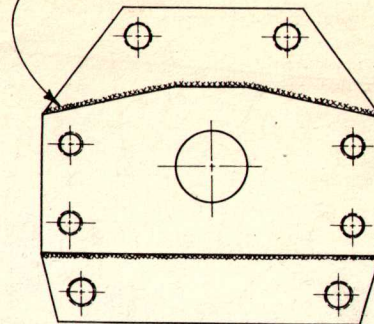
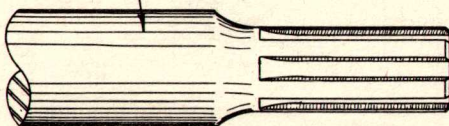
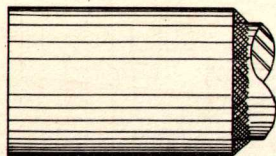
PUMP, OLD D7

NOTE: FRONT POWER TAKEOFF SHAFT FOR R-5
 TAKES - 1-20236 - PTO SHAFT
 1-20270 - SCREW
 1-29271 - LOCK
 THIS SHAFT DOES NOT
 TAKE A PACKING RING

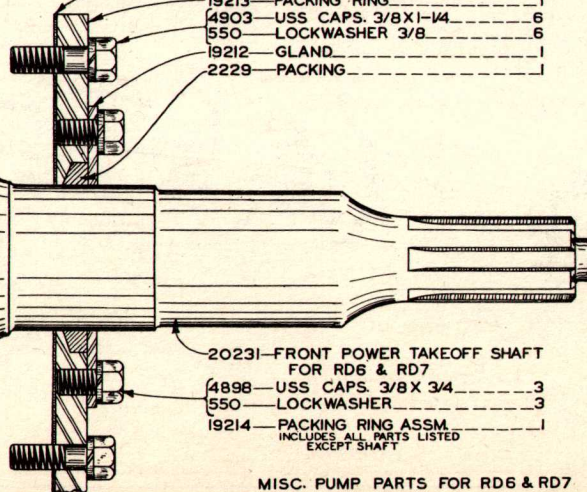
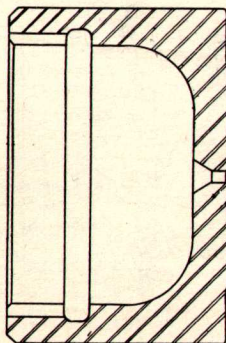
REAR POWER TAKEOFF SHAFT

FOR 35-40 & R5 GAS & RD6----- 20234
 FOR 50 GAS & RD7----- 20242

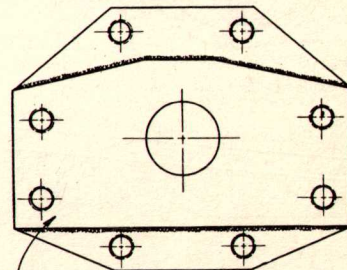
REAR ADAPTER PLATE ASSEMBLY
 20244-FOR 50 GAS & RD7



- 25370-GASKET-----|
- 19213-PACKING RING-----|
- 4903-USS CAPS. 3/8X1-1/4-----6
- 550-LOCKWASHER 3/8-----6
- 19212-GLAND-----|
- 2229-PACKING-----|



- 20231-FRONT POWER TAKEOFF SHAFT
FOR RD6 & RD7
- 4898-USS CAPS. 3/8 X 3/4-----3
- 550-LOCKWASHER-----3
- 19214-PACKING RING ASSM.
INCLUDES ALL PARTS LISTED
EXCEPT SHAFT-----|



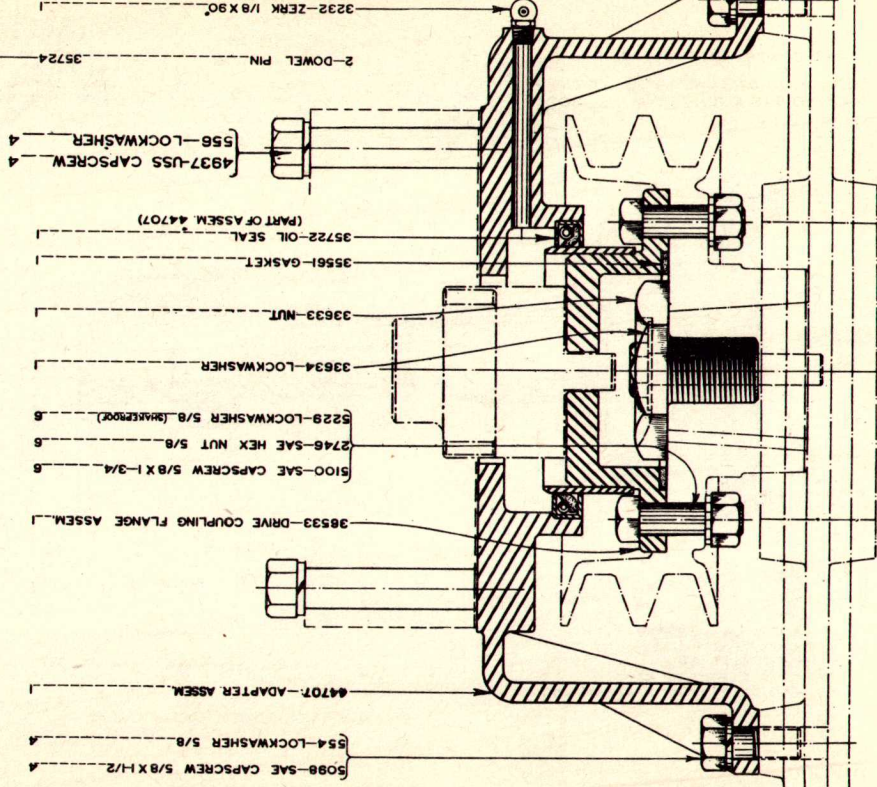
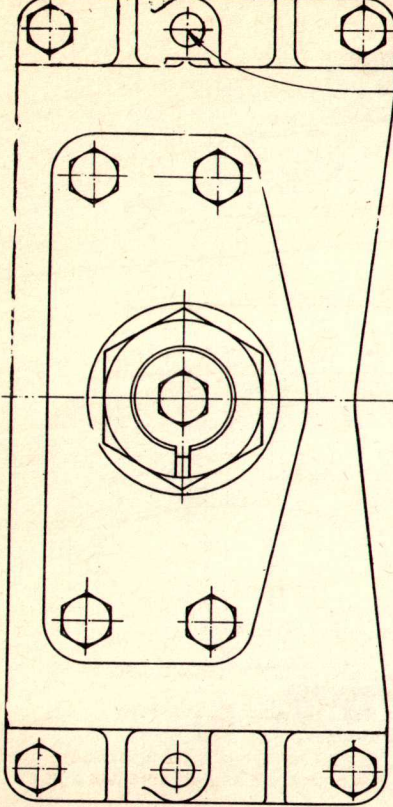
REAR ADAPTER PLATE ASSEMBLY
 20230-FOR 35 & 40 & R5 GAS & RD6

MISC. PUMP PARTS FOR RD6 & RD7

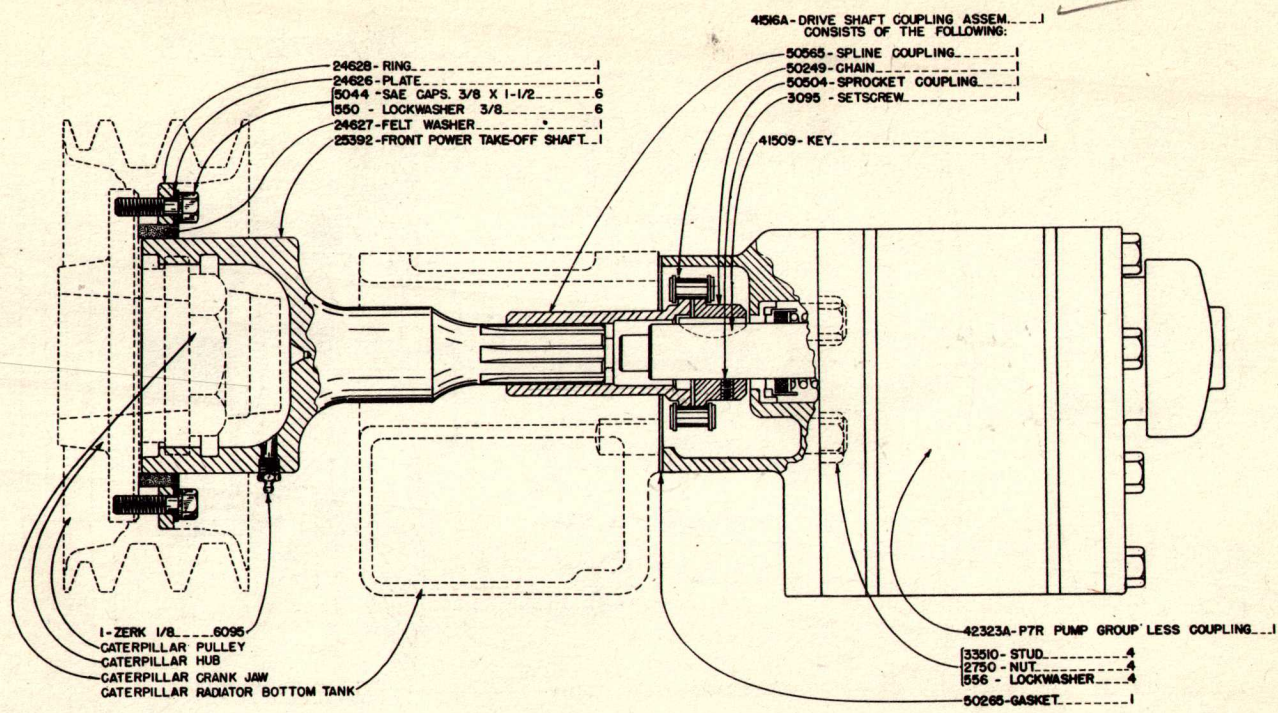
PLATE 893

FRONT PUMP ADAPTER FOR NEW D-7 TRACTOR

699



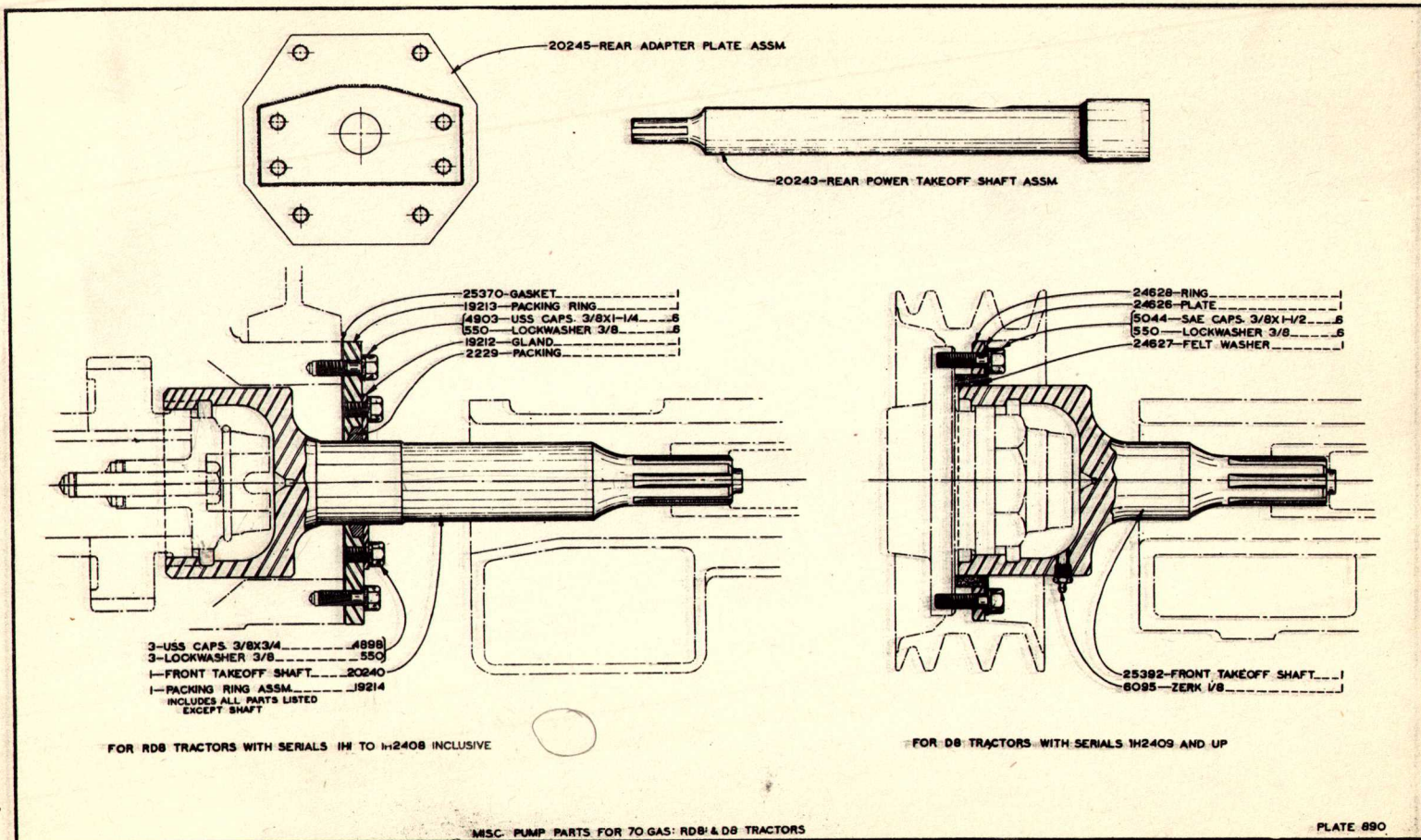
PUMP, D8



34

POWER TAKE-OFF FOR D8 TRACTOR

1428



PUMP, D8