

LAPLANT-CHOATE

PARTS CATALOG

**BULLDOZER
MODEL B76R
Serial Nos. 1 and Up**



LAPLANT-CHOATE MANUFACTURING CO., Inc.
CEDAR RAPIDS, IOWA, U. S. A.

Customer's Instructions for Ordering Parts

Our work will be simplified, your shipment will be expedited, and errors eliminated if these instructions are followed:

1. Enter all orders through the LaPlant-Choate distributor in your district.
2. State clearly whether shipment shall be made by Parcel Post, Express, Air Express, Rail or Motor Freight, and whether Collect or Prepaid.
3. List parts required, stating number of pieces wanted, part number and part name.
4. ALWAYS GIVE THE SERIAL NUMBER AND MODEL NUMBER OF MACHINE FOR WHICH PARTS ARE BEING ORDERED.
5. Confirm all telephone, telegraph and teletype orders in writing.

If for any reason it is necessary to return parts, the box or package containing same should be clearly labeled with the sender's name, and the shipment prepaid to our dealer.

NO SHIPMENTS WILL BE ACCEPTED AT THE FACTORY FROM ANYONE BUT OUR DEALER.

LaPLANT-CHOATE MANUFACTURING CO., INC.

Cedar Rapids, Iowa, U. S. A.

Western Division Office: 1022 - 77th Avenue
Oakland 3, California, U. S. A.

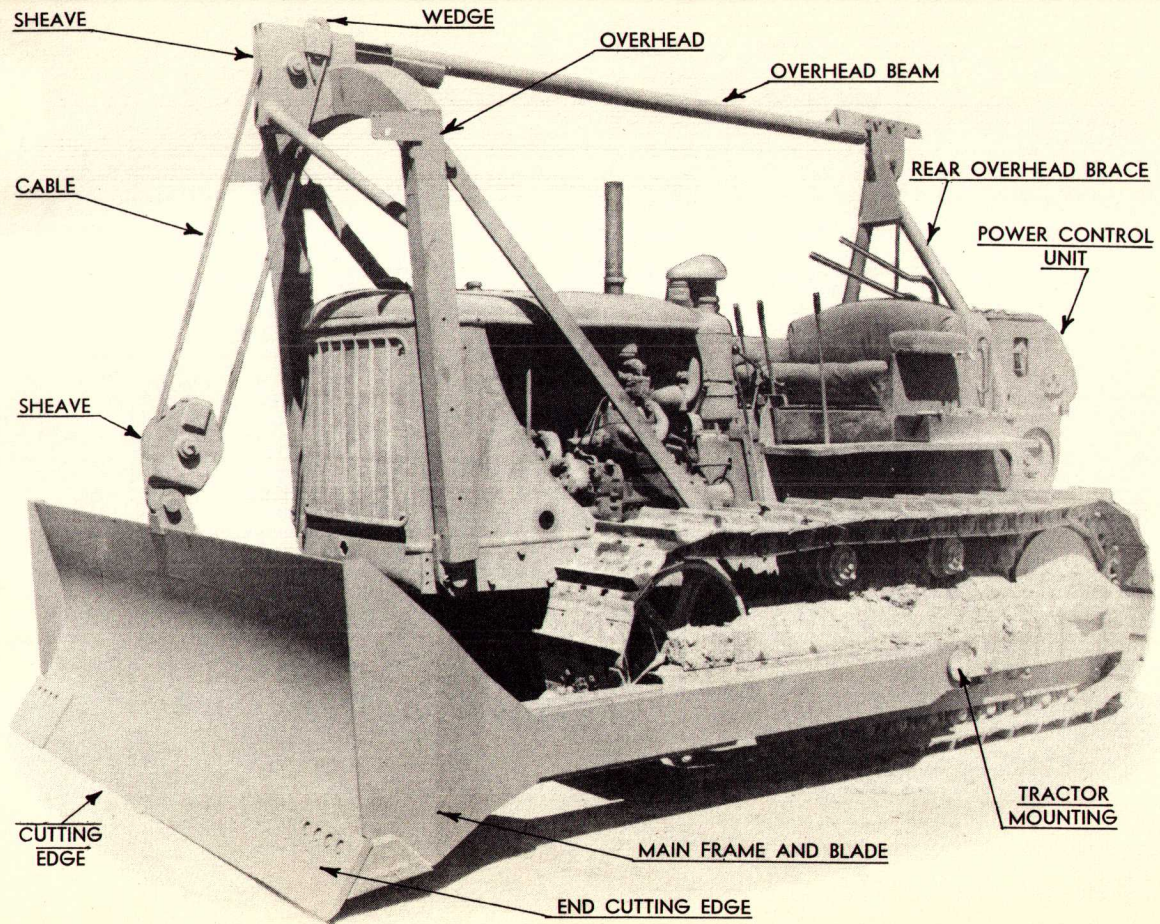
B76R BULLDOZER

MASTER PARTS CATALOG

TABLE OF CONTENTS

	Starting on Page
General Arrangement	3
Installation Instructions	5
Numerical Parts List	15
Parts Plates:	
Main Frame and Blade	7
Overhead	9
Overhead Beam	11
Radiator Guard	13
Rear Brace	12
Tractor Mountings	8
Cable Arrangement	14

LaPLANT  CHIOATE



MODEL B76R GENERAL ARRANGEMENT

INSTALLATION INSTRUCTIONS

B76R BULLDOZER

For use with Caterpillar D7 Track Type Tractor and rear power unit.

TO MOUNT TRACTOR MOUNTING GROUP

Place R. H. tractor mounting group No. 47398 over holes provided in outside of track roller frame and secure in place with 8 No. 4976 U.S.S. capscrews $\frac{7}{8}$ " x $2\frac{1}{2}$ " and 8 No. 588 lockwashers $\frac{7}{8}$ ". Refer to parts plate No. 1311.

Place L. H. tractor mounting group No. 47399 over holes provided in outside of track roller frame and secure in place with 8 No. 4976 U.S.S. capscrews $\frac{7}{8}$ " x $2\frac{1}{2}$ " and 8 No. 588 lockwashers $\frac{7}{8}$ ". Refer to parts plate No. 1311.

To mount overhead group, refer to parts plate No. 1510. It is necessary to remove Caterpillar radiator guard as this guard cannot be used with LaPlant-Choate equipment.

Remove No. 52871 R. H. and No. 52872 L. H. overhead brace assemblies.

IMPORTANT: Do not remove No. 47411 R. H. and No. 47412 L. H. overhead mounting plate assemblies. Lay No. 52877 overhead assembly forward in horizontal position and bolt No. 47411 R. H. and No. 47412 L. H. overhead mounting plates to holes provided in front of tractor motor frame with 10 No. 22315 U.S.S. capscrews $\frac{7}{8}$ " x 3", 10 No. 3880 U.S.S. Hex nuts, and 10 No. 558 lockwashers $\frac{7}{8}$ ". Bolt No. 52871 R. H. and No. 52872 L. H. overhead braces in place on bottom of motor frame using 4 No. 5134 S.A.E. capscrews $\frac{3}{4}$ " x $2\frac{3}{4}$ ", 4 No. 2750 S.A.E. Hex nuts $\frac{3}{4}$ ", and 4 No. 556 lockwashers. Do not draw bolts tight. Swing No. 52877 to vertical position and fasten to top No. 52871 and No. 52872 braces using 2 No. 5288 S.A.E. capscrews $1\frac{1}{4}$ " x $3\frac{1}{4}$ ", 2 No. 2761 S.A.E. Hex nuts $1\frac{1}{4}$ " and 2 No. 564 lockwashers $1\frac{1}{4}$ ". Tighten all bolts.

Install No. 47471 LaPlant-Choate radiator guard to No. 52878 overhead group, using 6 No. 5092 S.A.E. capscrews $\frac{1}{2}$ " x $4\frac{3}{4}$ ", 6 No. 2741 S.A.E. Hex nuts $\frac{1}{2}$ " and 6 No. 552 lockwashers $\frac{1}{2}$ ".

Install No. 50657 R. H. rear bracket and No. 50658 L. H. rear bracket on rear of tractor transmission case using the 4 No. 50652 studs provided. Refer to parts plate No. 1421.

IMPORTANT: If a Caterpillar power control unit is used, these parts No. 50657-58 must be installed with the upper, or curved part to the front.

On other makes of power control units, where the cable is threaded from the fairlead sheave on the rear, these brackets may be reversed, using the left one on the right side, with the offset to the rear. If this is done the rear overhead brace group must be bolted to the rear position on the overhead beam group.

Install No. 50633 rear overhead brace assembly using the 2 No. 5190 capscrews provided. Refer to parts plate No. 1421.

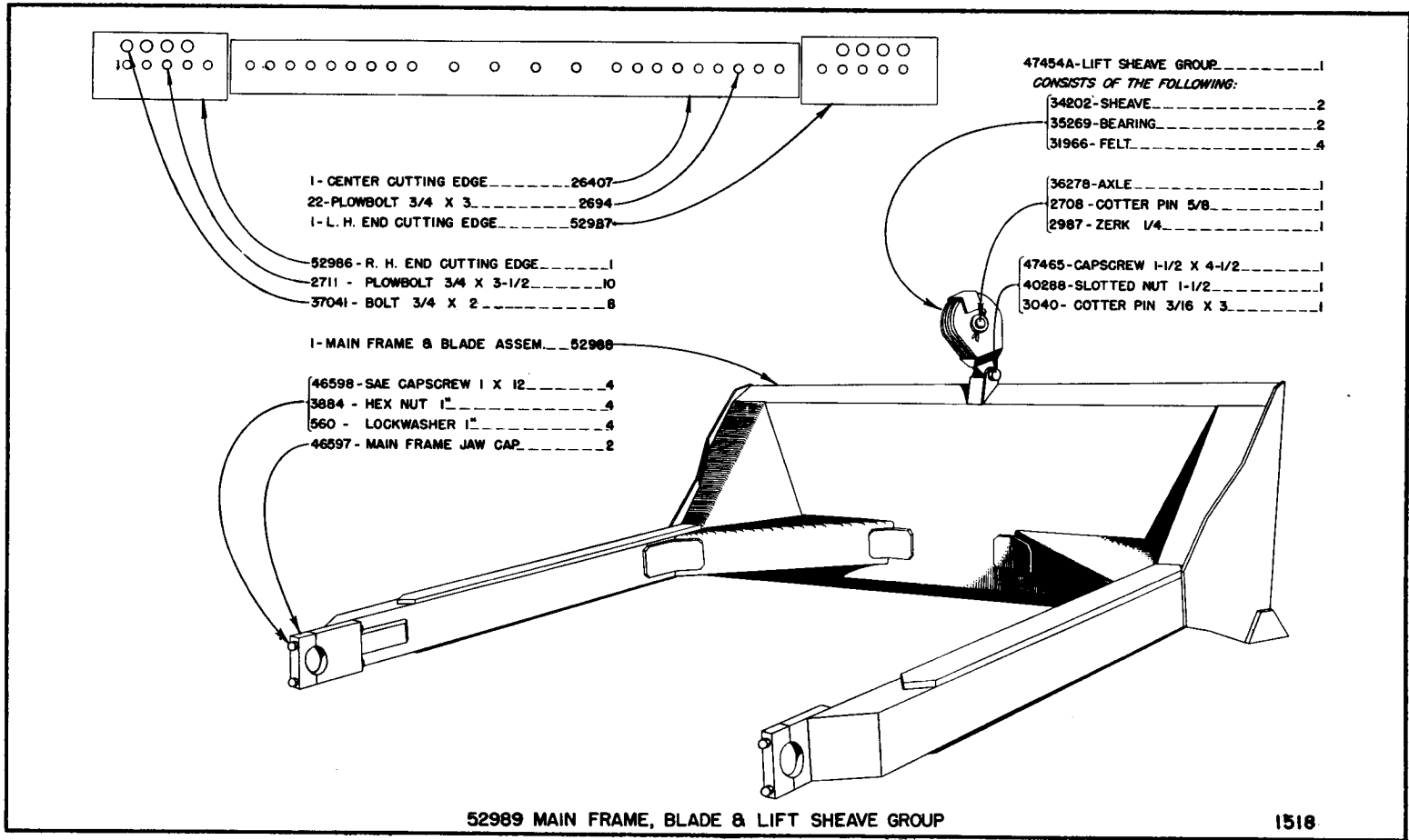
Install No. 50649 overhead beam group using the 5 No. 5188 capscrews provided. Refer to parts plate 1413.

NOTE: Bolt the rear overhead brace group to the overhead beam group in the farthest forward position possible if it is to be used with a Caterpillar power control unit. Other positions are for the purpose of using with other type power control units.

To install main frame and blade, refer to parts plate No. 1518.

Remove No. 46597 jaw caps and drive tractor into frame. Reinstall caps over No. 46579 pivot bearing.

Install No. 29859 cable $\frac{1}{2}$ " — 6 x 19 wire rope in overhead and main frame sheave blocks as illustrated on parts plate No. 1422. Be sure to dead-end the wire rope on left side of overhead beam group and after threading through the sheaves attach the other end to the power control unit drum.

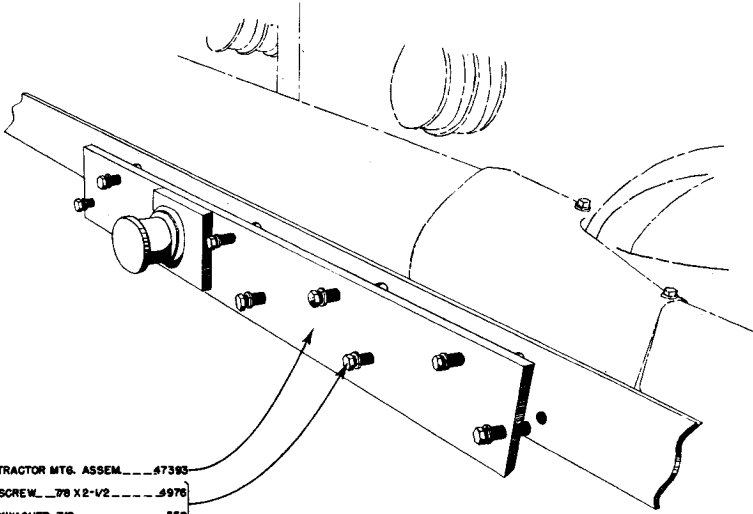


1518

MAIN FRAME AND BLADE

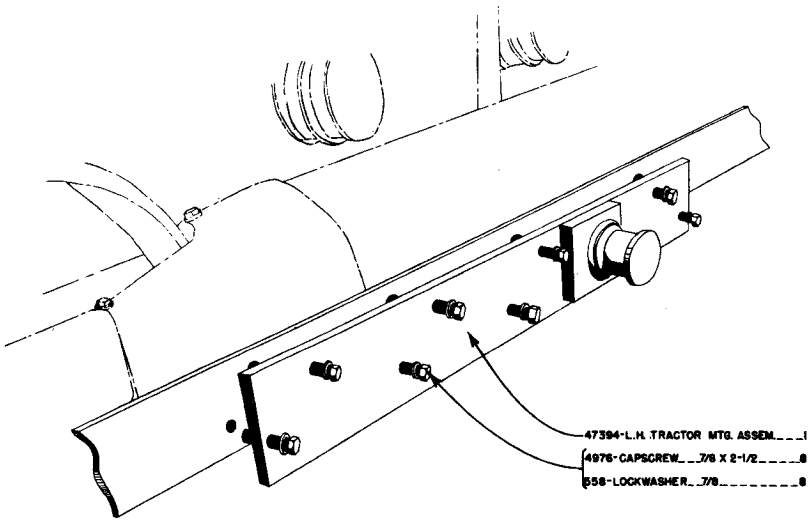
B76R — 1 AND UP

P 1525



- 1-R.H. TRACTOR MTG. ASSEM. 47395
- 6-CAPSCREW 7/8 X 2-1/2 4976
- 6-LOCKWASHER 7/8 558

R.H. TRACTOR MOUNTING



- 1-47394-L.H. TRACTOR MTG. ASSEM. 1
- 6-4976-CAPSCREW 7/8 X 2-1/2 6
- 6-558-LOCKWASHER 7/8 6

L.H. TRACTOR MOUNTING

- 2-SHEAVE ASSEM_____35268
- EACH ASSEM CONSISTS OF:
- 1-SHEAVE_____34202
- 1-BEARING_____35269
- 2-FELT_____31966

- 1-RH OVERHEAD BRACE ASSEM_47437
- 1-LH OVERHEAD BRACE ASSEM_47438

- 1-ZERK 1/8_____6095
- (NOT SHOWN)

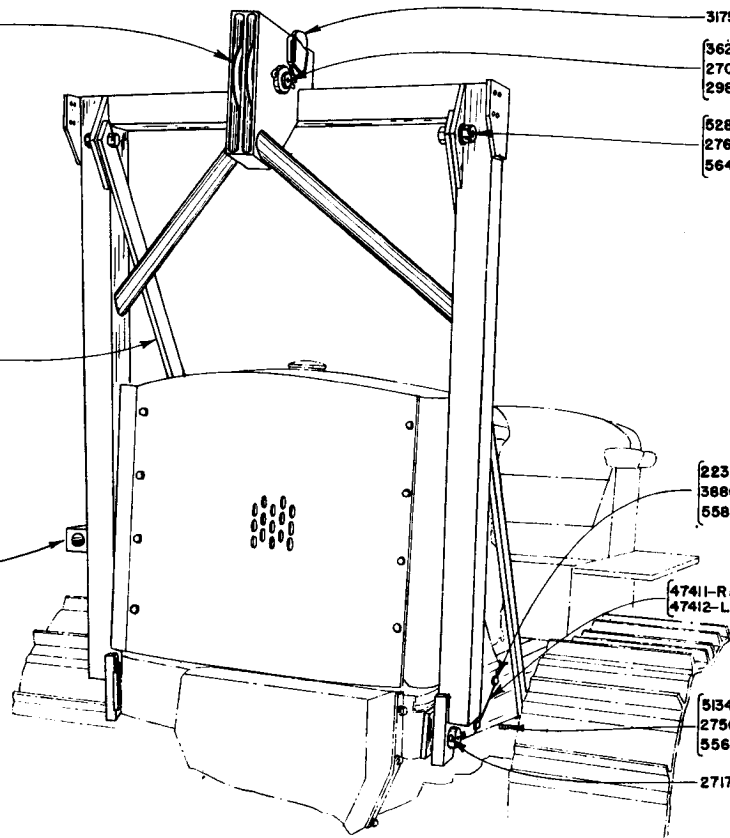
- 31756-WEDGE_____2
- 36278-AXLE_____1
- 2708-COTTER PIN 5/8 X 4-1/2_____1
- 2987-ZERK 1/4_____1
- 5288-SAE CAPSCREW 1-1/4 X 3-1/4_____2
- 2761-SAE HEX NUT 1-1/4_____2
- 564-LOCKWASHER 1-1/4_____2

- 22315-USS CAPSCREW 7/8 X 3_____10
- 3680-USS HEX NUT 7/8_____10
- 558-LOCKWASHER 7/8_____10

- 4741-I-RH OVERHEAD MTG PLATE ASSEM_1
- 4742-LH OVERHEAD MTG PLATE ASSEM_1

- 5134-SAE CAPSCREW 3/4 X 2-3/4_____4
- 2750-SAE HEX NUT 3/4_____4
- 556-LOCKWASHER 3/4_____4

- 2717-COTTER PIN 5/8 X 4_____2



47447 OVERHEAD GROUP

1309

OVERHEAD

B76R — 1 TO 27, INCL.

OVERHEAD

B76R — 28 AND UP

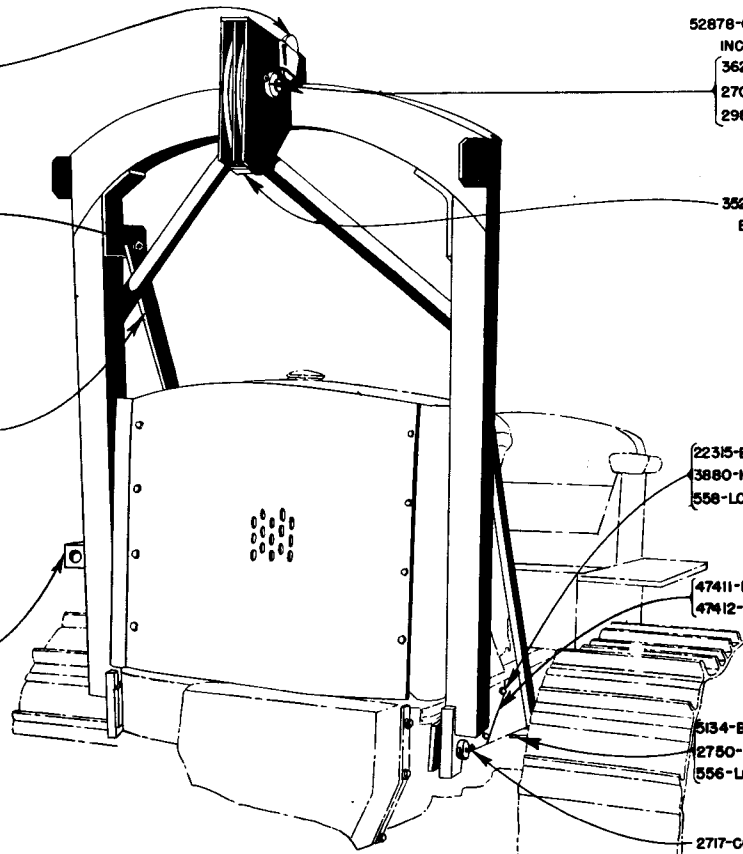
10

2-CABLE WEDGE 31756

2-CAPSCREW 1-1/4X3-1/4 5288
 2-HEX NUT 1-1/4 2761
 2-LOCKWASHER 1-1/4 564

1-R.H. OVERHEAD BRACE ASSEM. 52871
 1-L.H. OVERHEAD BRACE ASSEM. 52872

1-ZERK 1/8 (NOT SHOWN) 6095
 (PART OF 52878 OVERHEAD GROUP)



52878-OVERHEAD GROUP 1
 INCLUDES THE FOLLOWING:
 36278-SHEAVE AXLE 1
 2708-COTTER PIN 5/8X4-1/2 1
 2987-ZERK 1/4 1

35268-SHEAVE ASSEM 2
 EACH CONSISTS OF:
 34202-SHEAVE 1
 35269-BEARING 1
 31966-FELT 2

22315-BOLT 7/8X3 10
 3880-HEX NUT 7/8 10
 558-LOCKWASHER 7/8 10

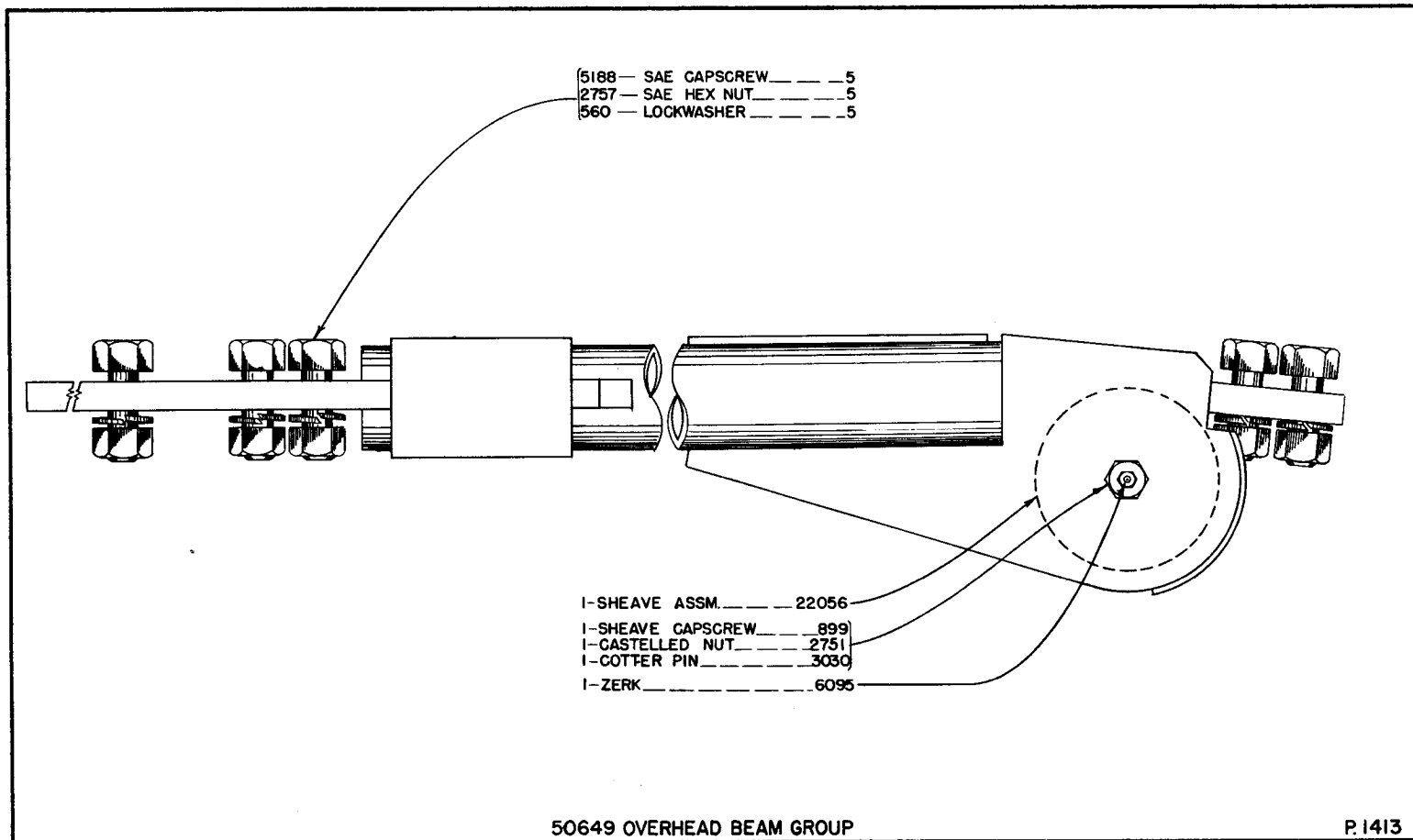
47411-R.H. OVERHEAD MTG. PL. ASSEM. 1
 47412-L.H. OVERHEAD MTG. PL. ASSEM. 1

5134-BOLT 3/4X2-3/4 4
 2780-HEX NUT 3/4 4
 556-LOCKWASHER 3/4 4

2717-COTTER PIN 5/8X4 2

OVERHEAD GROUP & SUPPORTS

1510

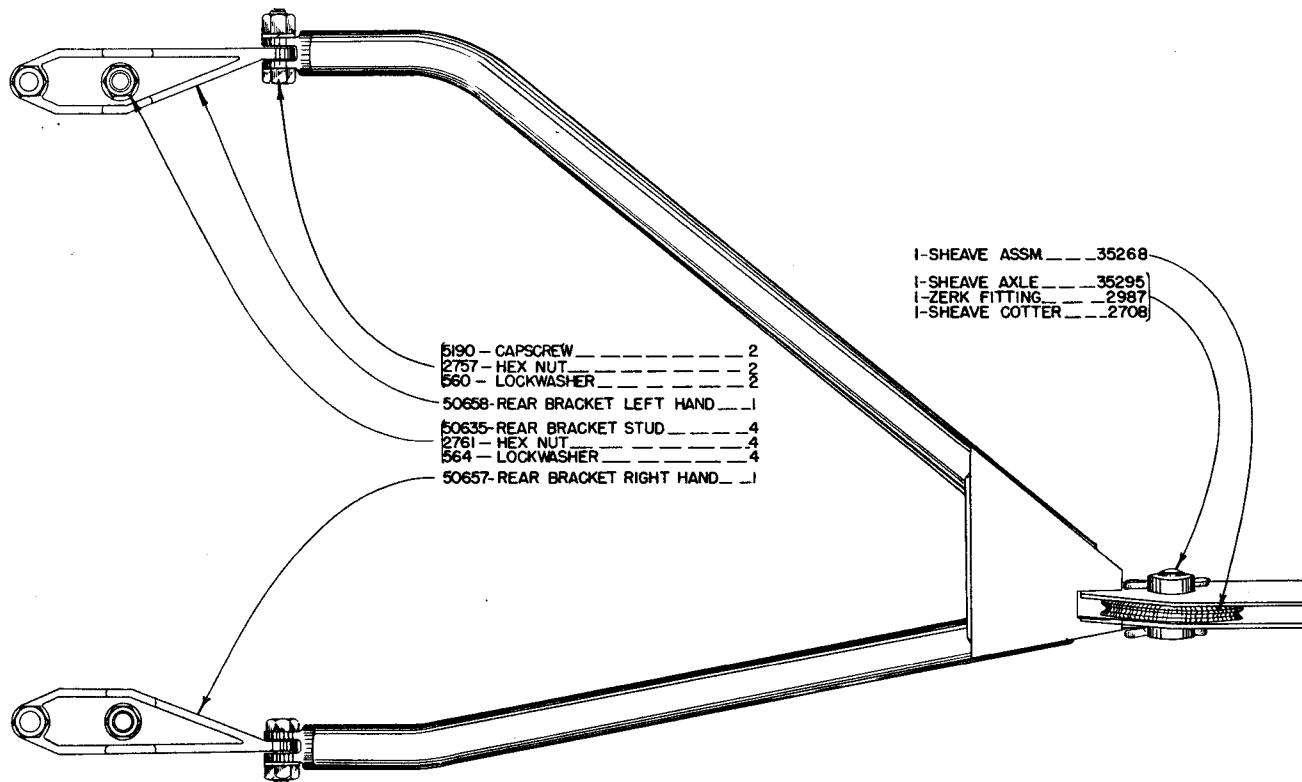


OVERHEAD BEAM

B76R — 1 AND UP

REAR BRACE

B76R — 1 AND UP

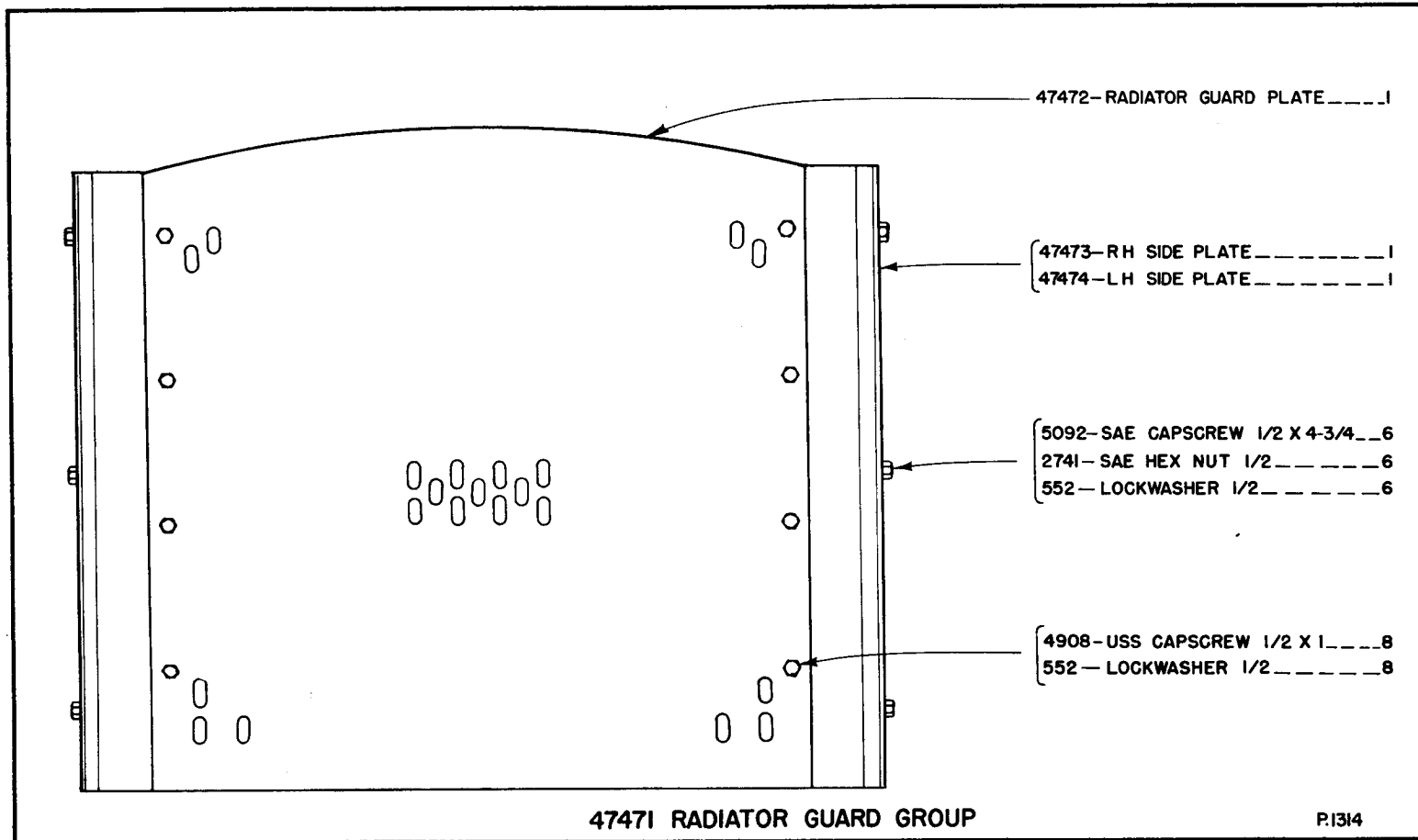


- 5190 - CAPSCREW ----- 2
- 2757 - HEX NUT ----- 2
- 560 - LOCKWASHER ----- 2
- 50658 - REAR BRACKET LEFT HAND ___ 1
- 50635 - REAR BRACKET STUD ----- 4
- 2761 - HEX NUT ----- 4
- 564 - LOCKWASHER ----- 4
- 50657 - REAR BRACKET RIGHT HAND ___ 1

- 1-SHEAVE ASSM ___ 35268
- 1-SHEAVE AXLE ___ 35295
- 1-ZERK FITTING ___ 2987
- 1-SHEAVE COTTER ___ 2706

50655 REAR BRACE GROUP

P1421

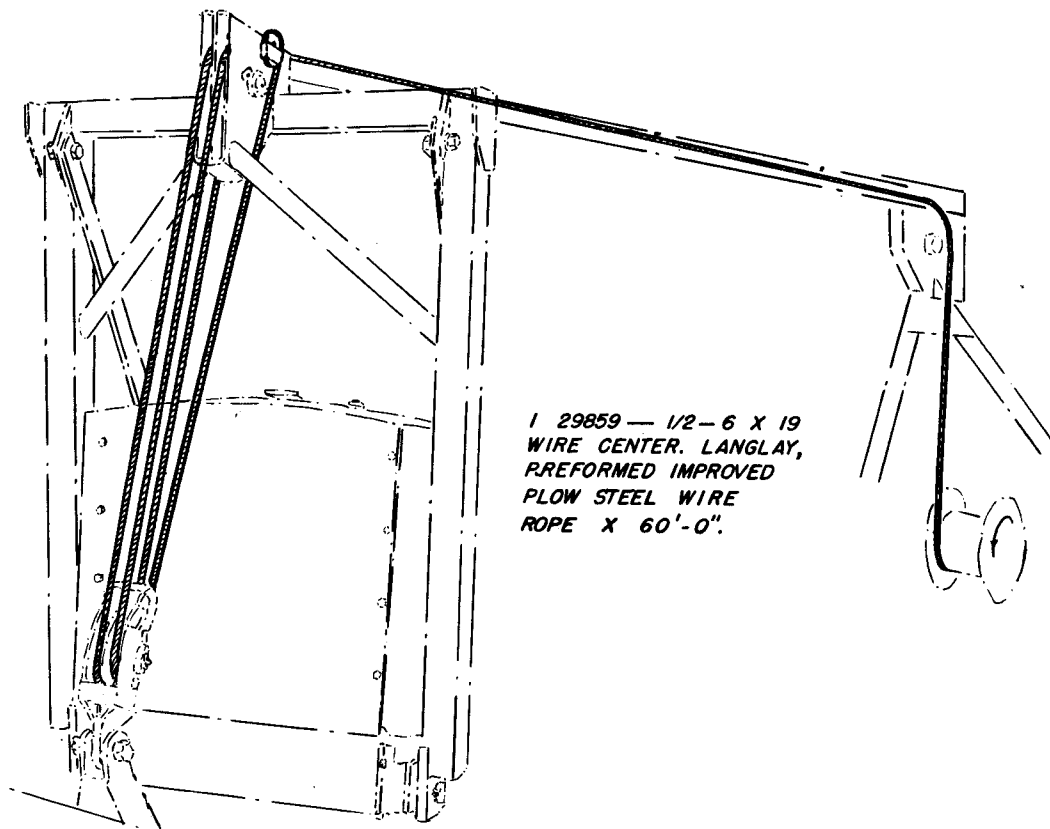


RADIATOR GUARD

B76R — 1 AND UP

CABLE ARRANGEMENT

B76R — I AND UP



1 29859 — 1/2 — 6 X 19
WIRE CENTER. LANGLAY,
PREFORMED IMPROVED
PLOW STEEL WIRE
ROPE X 60'-0".

CABLE ARRANGEMENT

P 1422

NUMERICAL PARTS LIST MODEL B76R BULLDOZER

Part No.	Qty.	Description	Plate No.	Page No.
552	14	Lockwasher 1/2"	1314	13
556	4	Lockwasher 3/4"	1510	10
556	4	Lockwasher 3/4"	1309	9
558	16	Lockwasher 7/8"	1525	8
558	10	Lockwasher 7/8"	1510	10
558	10	Lockwasher 7/8"	1309	9
560	5	Lockwasher 1"	1413	11
560	2	Lockwasher 1"	1421	12
560	4	Lockwasher 1"	1518	7
564	4	Lockwasher 1 1/4"	1421	12
564	2	Lockwasher 1 1/4"	1510	10
564	2	Lockwasher 1 1/4"	1309	9
899	1	Sheave Capscrew	1413	11
2694	22	Plowbolt 3/4" x 3"	1518	7
2708	1	Cotter Pin 5/8"	1518	7
2708	1	Cotter Pin 5/8" x 4 1/2"	1309	9
2708	1	Cotter Pin 5/8" x 4 1/2"	1510	10
2708	1	Sheave Cotter	1421	12
2711	10	Plowbolt 3/4" x 3 1/2"	1518	7
2717	2	Cotter Pin 5/8" x 4"	1309	9
2717	2	Cotter Pin 5/8" x 4"	1510	10
2741	6	Hex Nut 1/2"	1314	13
2750	4	Hex Nut 3/4"	1309	9
2750	4	Hex Nut 3/4"	1510	10
2751	1	Castellated Nut	1413	11
2757	5	Hex Nut	1413	11
2757	2	Hex Nut	1421	12
2761	2	Hex Nut 1 1/4"	1309	9
2761	4	Hex Nut	1421	12
2761	2	Hex Nut 1 1/4"	1510	10
2987	1	Zerk 1/4"	1518	7
2987	1	Zerk 1/4"	1510	10
2987	1	Zerk 1/4"	1309	9
2987	1	Zerk Fitting	1421	12
3030	1	Cotter Pin	1413	11

NUMERICAL PARTS LIST — B76R BULLDOZER — Cont'd

Part No.	Qty.	Description	Plate No.	Page No.
3040	1	Cotter Pin 3/16" x 3"	1518	7
3880	10	Hex Nut 7/8"	1309	9
3880	10	Hex Nut 7/8"	1510	10
3884	4	Hex Nut 1"	1518	7
4908	8	Capscrew 1/2" x 1"	1314	13
4976	16	Capscrew 7/8" x 2 1/2"	1525	8
5092	6	Capscrew 1/2" x 4 3/4"	1314	13
5134	4	Capscrew 3/4" x 2 3/4"	1309	9
5134	4	Bolt 3/4" x 2 3/4"	1510	10
5188	5	Capscrew	1413	11
5190	2	Capscrew	1421	12
5288	2	Capscrew 1 1/4" x 3 1/4"	1309	9
5288	2	Capscrew 1 1/4" x 3 1/4"	1510	10
6095	1	Zerk 1/8"	1309	9
6095	1	Zerk 1/8"	1510	10
6095	1	Zerk	1413	11
22056	1	Sheave Assembly	1413	11
22315	10	Capscrew 7/8" x 3"	1309	9
22315	10	Bolt 7/8" x 3"	1510	10
26407	1	Center Cutting Edge	1518	7
29859	1	Cable	1422	14
31756	2	Wedge	1309	9
31756	2	Cable Wedge	1510	10
31966	4	Felt	1518	7
31966	2	Felt	1309	9
31966	2	Felt	1510	10
34202	2	Sheave	1518	7
34202	1	Sheave	1309	9
34202	1	Sheave	1510	10
35268	2	Sheave Assembly	1309	9
35268	2	Sheave Assembly	1510	10
35268	1	Sheave Assembly	1421	12
35269	2	Bearing	1518	7
35269	1	Bearing	1510	10
35269	1	Bearing	1309	9

NUMERICAL PARTS LIST — B76R BULLDOZER — Cont'd

Page	Plate	No.	Description	Qty.	No.	Part
		1421	Sheave Axle	1	35295	
7		1518	Axle	1	36278	
9		1309	Axle	1	36278	
10		1510	Sheave Axle	1	36278	
7		1518	Bolt 3/4" x 2"	8	37041	
7		1518	Slotted Nut 1 1/2"	1	40288	
7		1518	Main Frame Jaw Cap	2	46597	
7		1518	Capscrew 1" x 12"	4	46598	
8		1525	R. H. Tractor Mounting Assembly	1	47393	
8		1525	L. H. Tractor Mounting Assembly	1	47394	
9		1309	R. H. Overhead Mounting Plate Assem.	1	47411	
10		1510	R. H. Overhead Mounting Plate Assem.	1	47411	
9		1309	L. H. Overhead Mounting Plate Assem.	1	47412	
10		1510	L. H. Overhead Mounting Plate Assem.	1	47412	
9		1309	R. H. Overhead Brace Assembly	1	47437	
9		1309	L. H. Overhead Brace Assembly	1	47438	
9		1309	Overhead Group	1	47447	
7		1518	Lift Sheave Group	1	47454	
13		1314	Radiator Guard Group	1	47471	
13		1314	Radiator Guard Plate	1	47472	
13		1314	R. H. Side Plate	1	47473	
13		1314	L. H. Side Plate	1	47474	
7		1518	Capscrew 1 1/2" x 4 1/2"	1	47465	
12		1421	Stud	4	50635	
11		1413	Overhead Beam Group	1	50649	
12		1421	Rear Brace Group	1	50655	
12		1421	R. H. Rear Bracket	1	50657	
12		1421	L. H. Rear Bracket	1	50658	
10		1510	R. H. Overhead Brace Assembly	1	52871	
10		1510	L. H. Overhead Brace Assembly	1	52872	
10		1510	Overhead Group	1	52878	
7		1518	R. H. End Cutting Edge	1	52986	
7		1518	L. H. End Cutting Edge	1	52987	
7		1518	Main Frame and Blade Assembly	1	52988	
7		1518	Main Frame, Blade & Lift Sheave Group	1	52989	