

MODEL B6X — GENERAL ARRANGEMENT

# B6X BULLDOZER

## PARTS CATALOG

### Table of Contents

	Starting on Page
General Arrangement . . . . .	1
Mounting Instructions . . . . .	5
PARTS PLATES:	
Hydraulics . . . . .	19
Jack . . . . .	13
Jack Bracket . . . . .	10
Link . . . . .	17
Main Frame and Blade . . . . .	7
Piston Lever Arm . . . . .	15
Power Take-Off . . . . .	36
Pump . . . . .	27
Radiator Guard . . . . .	37
Tractor Mounting . . . . .	18
Valve . . . . .	26

LaPLANT-CHOATE MANUFACTURING CO., INC.  
Cedar Rapids, Iowa, U. S. A.

# MOUNTING INSTRUCTIONS

For Standard B6X Bulldozer for use with 35-40 Diesel and Gas Tractors and RD-6 Tractors

## MOUNTING INSTRUCTIONS

Forward: Mount all parts which are bolted to the tractor including the main frame bearing assembly, the cylinder bracket plate assemblies, and the hydraulic arrangement including the tank, valve, pump, and piping. Fill tank with fresh motor lubricating oil using S.A.E. 40, or medium, in summer; and S.A.E. 20, or light, in winter. Tank is to be filled to 4" from top. Lifting arm can now be operated in order to connect up to links when tractor is driven into main frame. Rear end of main frame must be blocked up to the same height as the main frame bearing in order to drive tractor into place. Roadbuilder can then be hooked or pinned into place with pin.

The following is the procedure to use in mounting the above assemblies on the tractor:

1. To Mount Main Frame Axle Bearing: Remove plugs from tapped holes in side of recoil spring housing in tractor and plugs in the four tapped holes directly below the recoil spring housing pad in the web of the main frame channel. Main frame bearings are held in place at the top by four 3/4" x 3-1/4" studs. For hooking the lower angle of the main frame bearings to the tractor channel use three 5/8" x 3-1/4" SAE bolts and one 5/8" x 2-1/4" SAE bolt. Bolts and studs are found in the packing box.

2. To Mount Oilers: Before mounting front cylinder bracket support plates as outlined in paragraph No. 3, install two lubricator assemblies found in packing box. These are to be installed on the front idler wheel oiler. This is necessary in order to use the "Caterpillar" grease gun on this oiler after the cylinder bracket plates are installed.

3. To Mount Cylinder Bracket Side Plates: Mount cylinder bracket side plates at the front of the track frame channels by using six 5/8" x 4-3/4" SAE bolts per plate on each side.

**IMPORTANT:** On tractors which do not have holes provided for cylinder bracket plates, it will be necessary to drill three additional holes in each track frame channel using a 21/32 drill. Holes are to be located as follows: First, remove four front truck roller bearing bolts. Also the four guard bolts on each side of the front truck roller bearing. Next, bolt cylinder bracket plates into place against the web of the track frame channel resting casting against lower flange of channels. Line the two center vertical holes with those of the front truck roller bearing. Use eight bolts 5/8 x 3-1/4 and eight bolts 5/8 x 4-1/2 found in packing box. Cylinder brackets are now properly located. Use horizontal holes in casting for location and pilot for drilling the 21/32 holes. Use twelve 5/8 x 4-3/4 bolts found in the packing box.

Assemble the cylinder pivot trunnion, jack, and piston lever arm, in place before bolting cylinder bracket side plates securely.

4. To Mount Rear Pump: Remove bevel gear inspection cover from rear of transmission case, disengage master clutch, and shift gears to neutral allowing free movement of the upper transmission shaft. Insert the extension shaft into coupling and place on end of extension shaft. Lift pump into place inserting pump drive shaft into extension shaft coupling and bolt securely.

4A. To Mount Front Pump: It is necessary to remove the radiator assembly in order to engage the inside extension shaft internal gear onto the spur gear at the end of the crank shaft. On 40 Diesel and RD-6 tractors it is necessary to bolt packing ring assembly No. 19214 in place, after inside extension shaft has been assembled. Assemble radiator back into place and bolt front pump on radiator bottom tank using four studs.

Install first a vellumoid gasket,

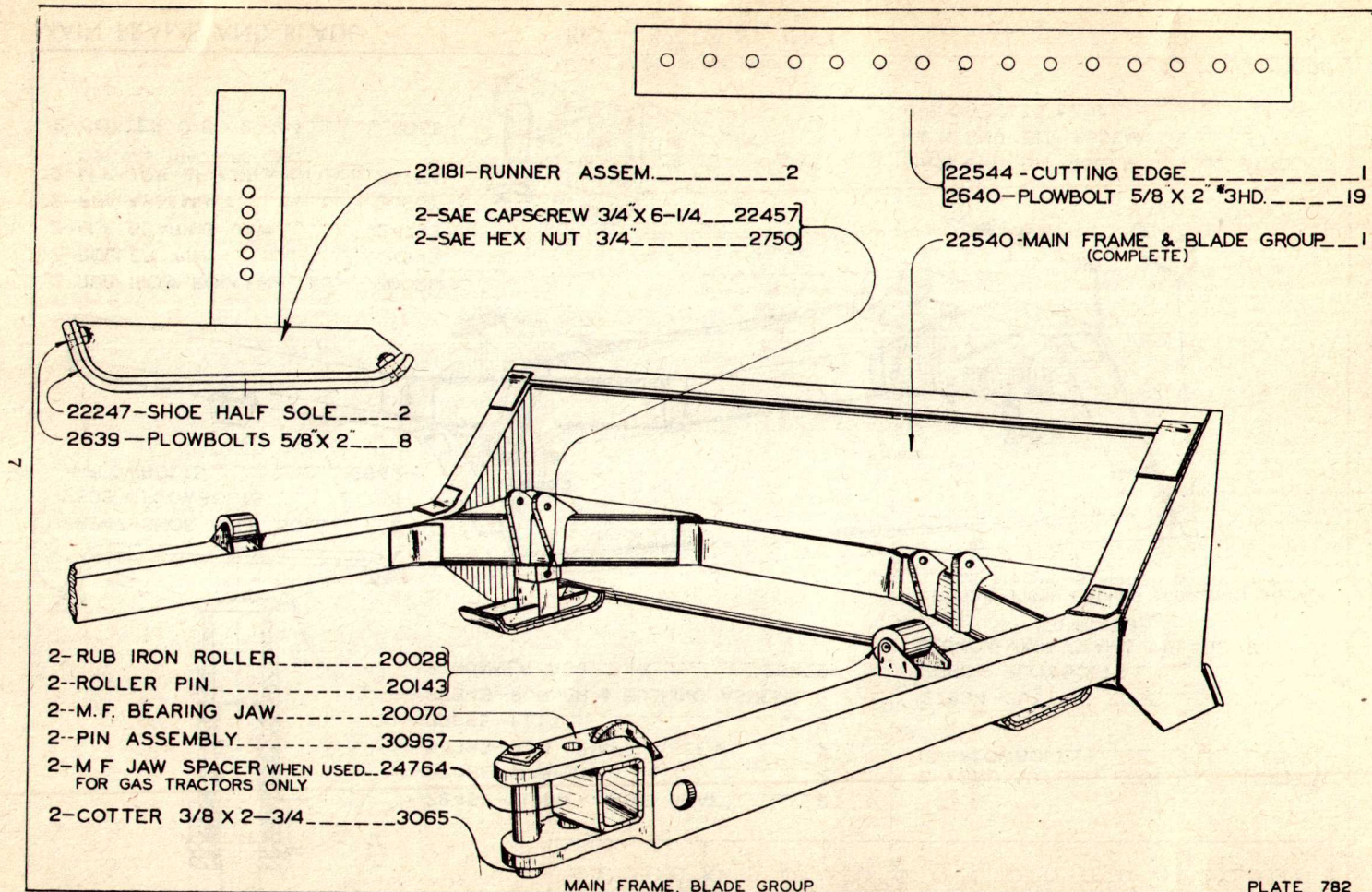
between the pump and the radiator tank. Tractors equipped with holes in the radiator tank for front pumps begin on Diesel 40 tractors with No. 3G717, Gas 40 tractors with No. 5G119, and R-5 tractors with No. 5E3090. On tractors below the above numbers it will be necessary to order radiator bottom tank No. 2B7652 for the Diesel 40, tank No. 2B7238 on the Gas 40, and tank No. 2B7238 on the R-5 tractors from the Caterpillar Tractor Company.

When installing the front pumps on 50 tractors, which have a lock cut out in the shape of a hexagon for the crank jaw nut, remove the "Caterpillar" lock and install screw lock No. 20267 which is a flat washer lock found in the packing box. Screw lock is to be installed between the crank jaw nut and spur gear on the crank shaft, inserting key into key way of crank shaft. To lock nut, turn edges of screw lock over onto the hex flats of the jaw nut.

5. To Mount Oil Tank and Valve: Oil tank and valve are assembled at the factory on a base plate and are to be mounted on the right hand fender through fender holes in the tractor which can be readily located. Refer to plate for piping arrangement.

Tank strap assembly will be found in packing box. Place strap around tank fastening one end to seat capscrew at side and clamp other end of strap to rear of seat at nearest seat cushion capscrew. Place filler block between tank and seat side and draw strap tight.

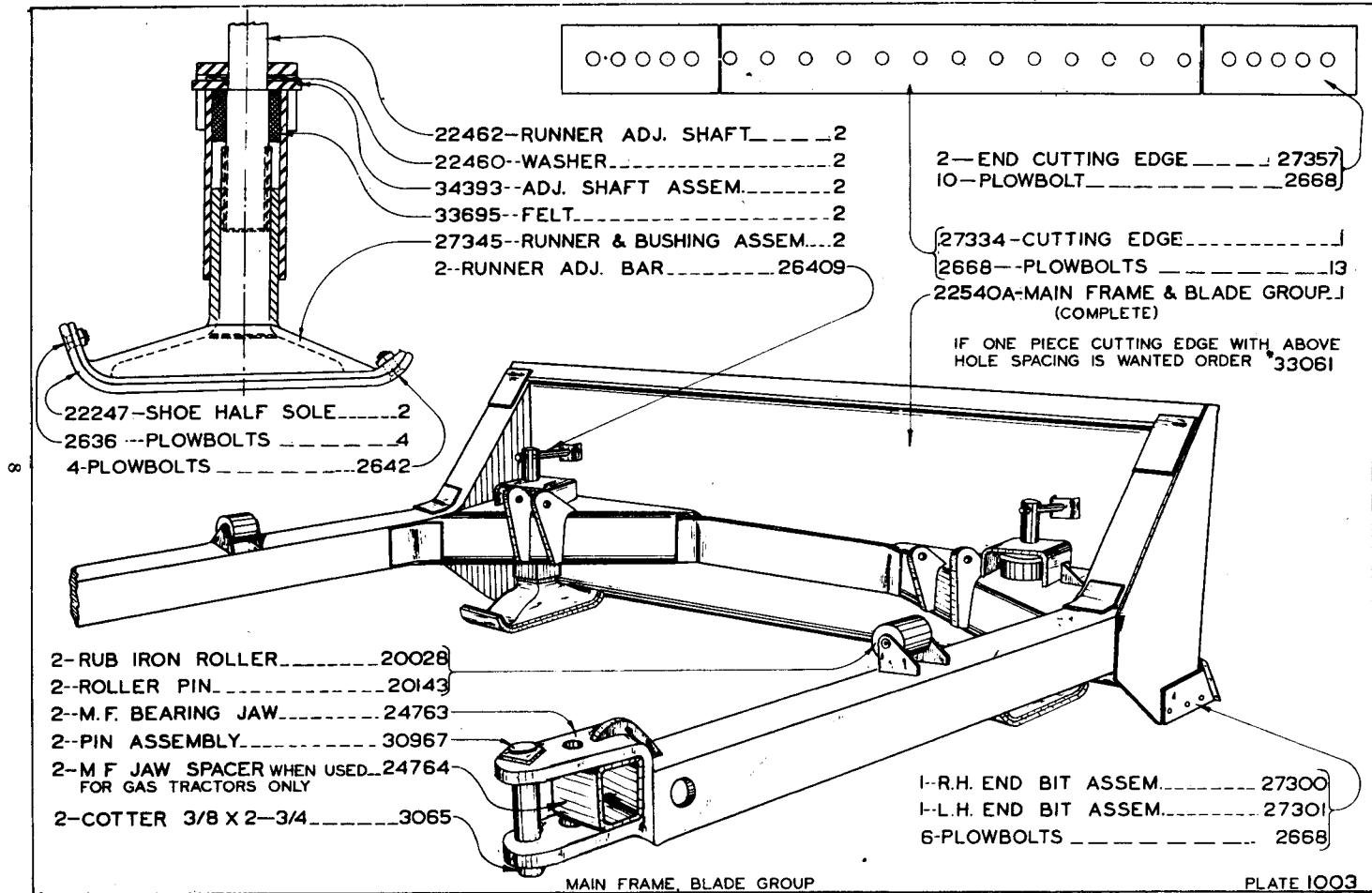
Tractor is now ready to be driven into main frame assembly. Connect link into place on top of frame. Lean same against top of blade. Jack rear end of main frame so that main frame bearing jaw is the same height as the main frame bearing or stub axle. Drive tractor into place connecting the rear jaw by means of pin and using hydraulic pressure to raise or lower the lifting arms to correct height to insert link bolt.



MAIN FRAME AND BLADE

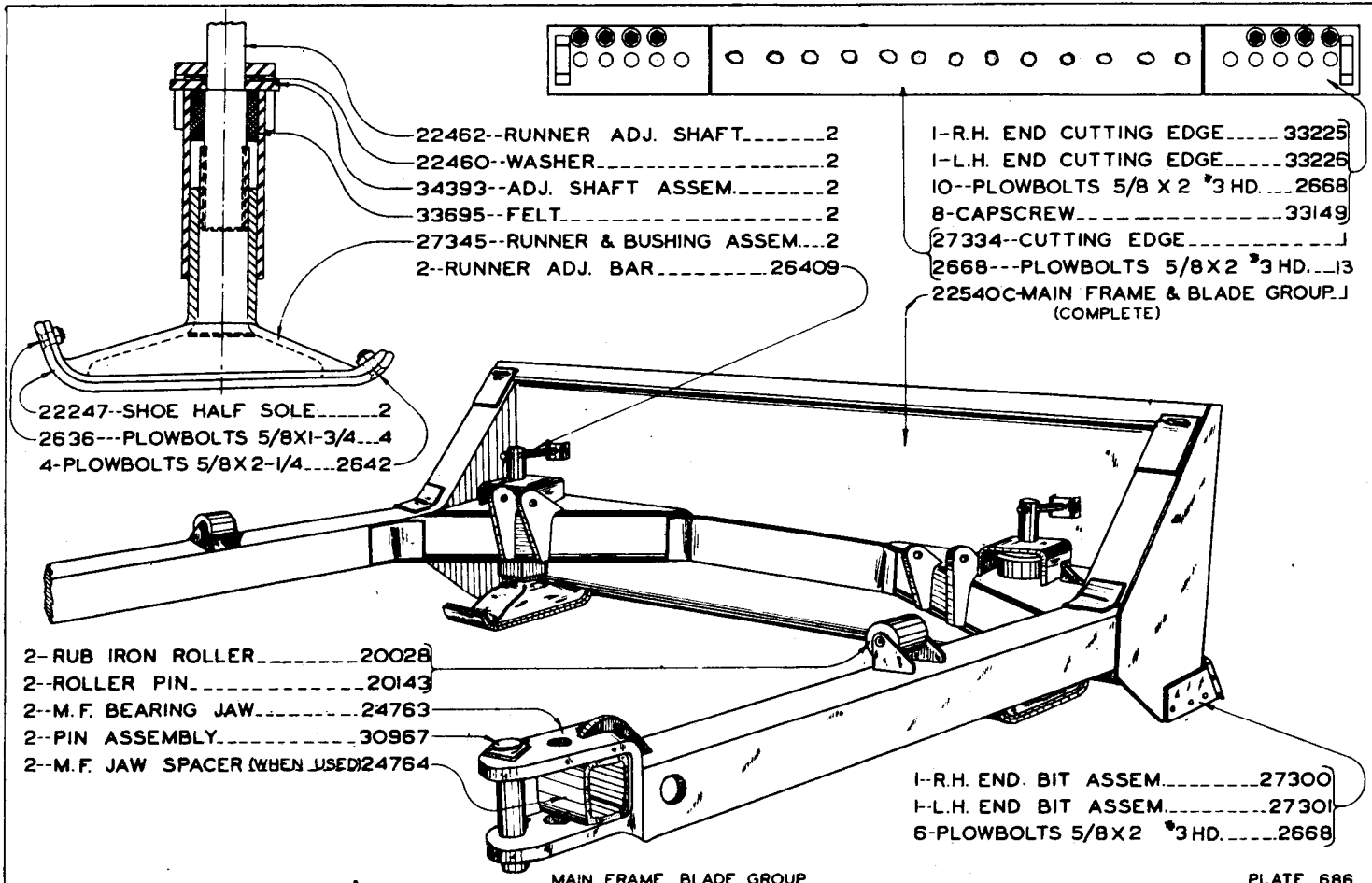
B6X — 1 TO 51, INCL.

PLATE 782



MAIN FRAME AND BLADE

B6X — 52 TO 81, INCL.



- 22462--RUNNER ADJ. SHAFT.....2
- 22460--WASHER.....2
- 34393--ADJ. SHAFT ASSEM.....2
- 33695--FELT.....2
- 27345--RUNNER & BUSHING ASSEM...2
- 2--RUNNER ADJ. BAR.....26409

- 1--R.H. END CUTTING EDGE.....33225
- 1--L.H. END CUTTING EDGE.....33226
- 10--PLOWBOLTS 5/8 X 2 \*3 HD...2668
- 8--CAPSCREW.....33149
- (27334--CUTTING EDGE.....J
- 2668---PLOWBOLTS 5/8X2 \*3 HD...13
- 22540C--MAIN FRAME & BLADE GROUP.J
- (COMPLETE)

- 22247--SHOE HALF SOLE.....2
- 2636---PLOWBOLTS 5/8X1-3/4...4
- 4--PLOWBOLTS 5/8X2-1/4...2642

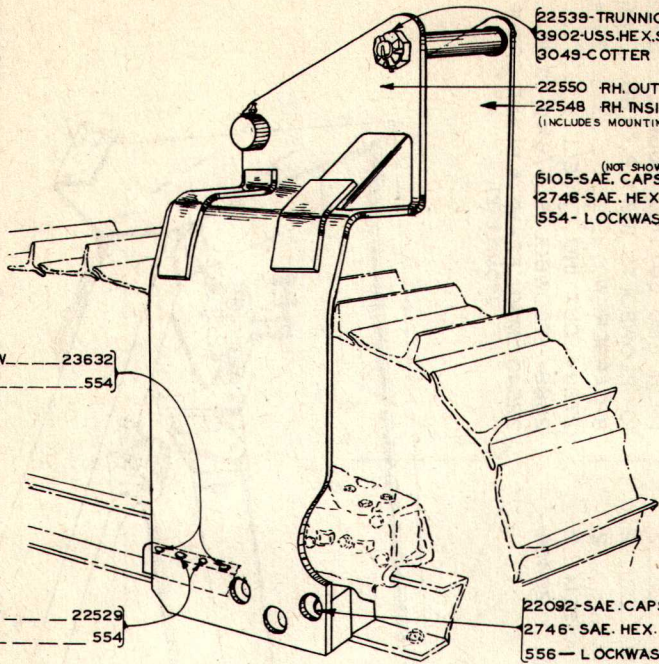
- 2--RUB IRON ROLLER.....20028
- 2--ROLLER PIN.....20143
- 2--M.F. BEARING JAW.....24763
- 2--PIN ASSEMBLY.....30967
- 2--M.F. JAW SPACER (WHEN USED)24764

- 1--R.H. END BIT ASSEM.....27300
- 1--L.H. END BIT ASSEM.....27301
- 6--PLOWBOLTS 5/8X2 \*3 HD.....2668

MAIN FRAME, BLADE GROUP

MAIN FRAME AND BLADE

B6X — 82 AND UP



- 22539-TRUNNION SHAFT.....1
- 3902-USS.HEX.SLOTTED NUT...2
- 3049-COTTER PIN.....2
- 22550 RH. OUTSIDE CYL. BKT. PL. 1
- 22548 RH. INSIDE CYL. BKT. PL. 1  
(INCLUDES MOUNTING BOLTS)
- (NOT SHOWN)
- 5105-SAE. CAPSCREW.....2
- 2746-SAE. HEX. NUT.....2
- 554- LOCKWASHER.....2

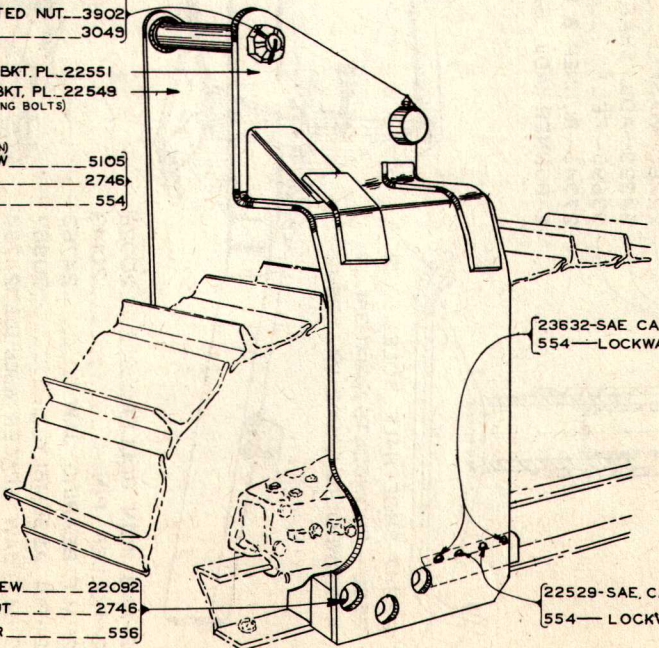
- 4-SAE CAPSCREW.....23632
- 4-LOCKWASHER.....554

- 4-SAE. CAPSCREW.....22529
- 4-LOCKWASHER.....554

- 22092-SAE. CAPSCREW.....6
- 2746-SAE. HEX. NUT.....6
- 556- L LOCKWASHER.....6

22473 RH. CYL. BKT. GROUP.

- 1-TRUNNION SHAFT.....22539
- 2 USS HE X. SLOTTED NUT...3902
- 2 COTTER PIN.....3049
- L.H. OUTSIDE CYL. BKT. PL. 22551
- L.H. INSIDE CYL. BKT. PL. 22549  
(INCLUDES MOUNTING BOLTS)
- (NOT SHOWN)
- 2-SAE. CAPSCREW.....5105
- 2-SAE. HEX. NUT.....2746
- 2-LOCKWASHER.....554



- 23632-SAE CAPSCREW.....4
- 554-LOCKWASHER.....4

- 6-SAE. CAPSCREW.....22092
- 6-SAE. HEX. NUT.....2746
- 6-LOCKWASHER.....556

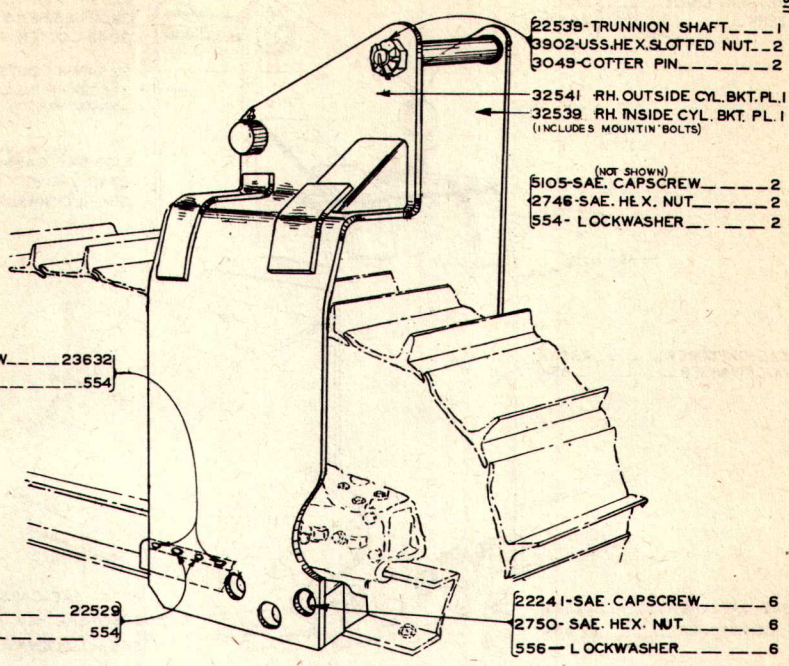
- 22529-SAE. CAPSCREW.....4
- 554- LOCKWASHER.....4

22474 LH. CYL. BKT. GROUP.

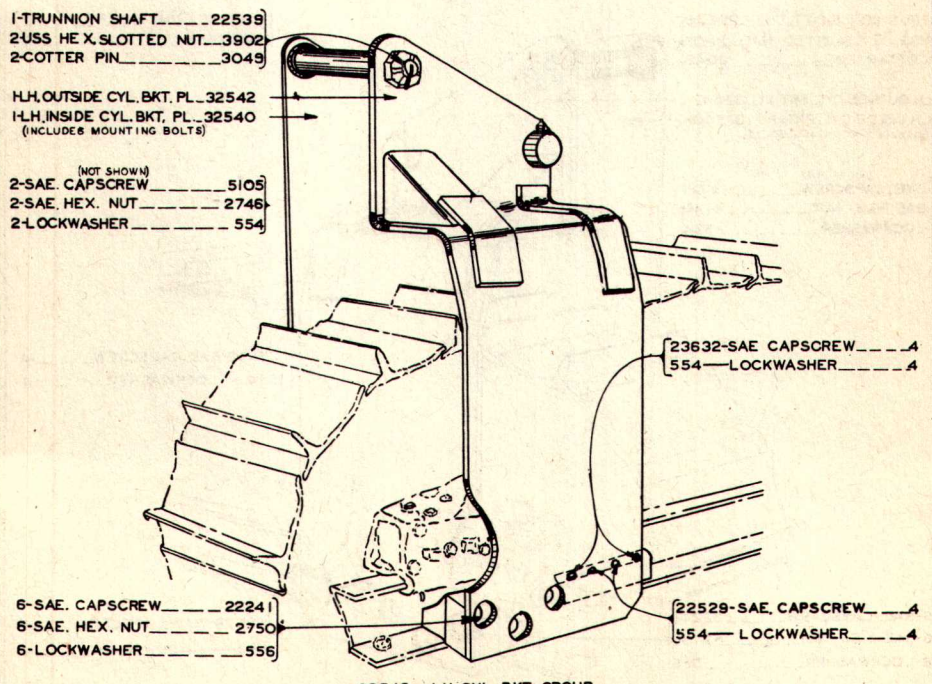
B6X — 1 TO 73, INCL.

JACK BRACKET





32547 RH. CYL. BKT. GROUP.



32548 LH. CYL. BKT. GROUP.

B6X — 74 TO 88, INCL. JACK BRACKET

- 2-BEARING LINER.....33300
- 2-ZERK.....2987

- 22539-TRUNNION SHAFT.....1
- 3902-USS.HEX.SLOTTED NUT...2
- 3049-COTTER PIN.....2

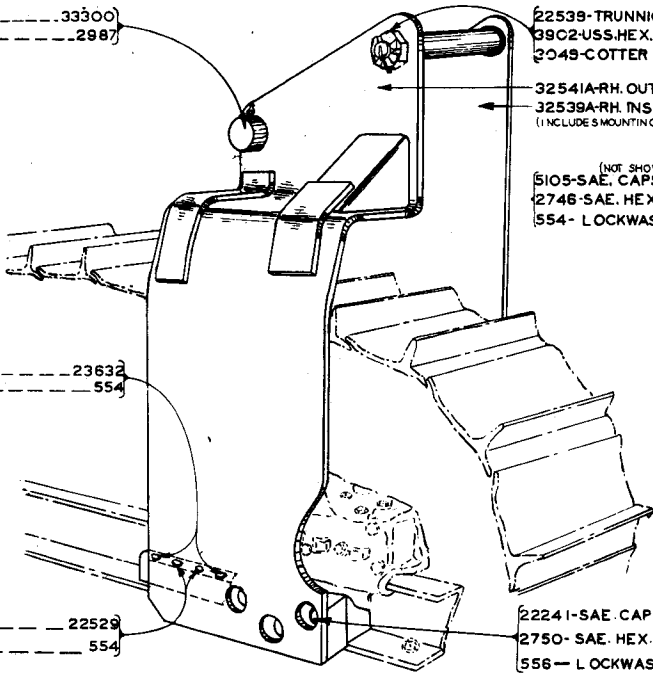
- 32541A-RH. OUTSIDE CYL. BKT. PL.1
- 32539A-RH. INSIDE CYL. BKT. PL.1  
(INCLUDES MOUNTING BOLTS)

- (NOT SHOWN)
- 5105-SAE. CAPSCREW.....2
- 2746-SAE. HEX. NUT.....2
- 554- LOCKWASHER.....2

- 4-SAE. CAPSCREW.....23632
- 4-LOCKWASHER.....554

- 4-SAE. CAPSCREW.....22529
- 4-LOCKWASHER.....554

- 2224 I-SAE. CAPSCREW.....6
- 2750-SAE. HEX. NUT.....6
- 556- LOCKWASHER.....6



32547A RH. CYL. BKT. GROUP

- 1-TRUNNION SHAFT.....22539
- 2-USS HE X. SLOTTED NUT...3902
- 2-COTTER PIN.....3049

- 33300-BEARING LINER.....2
- 2987-ZERK.....2

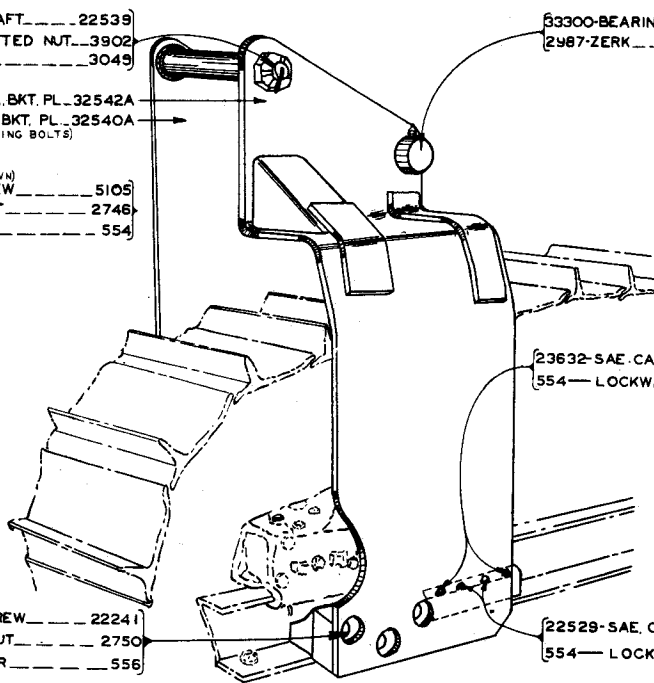
- 1-LH. OUTSIDE CYL. BKT. PL. 32542A
- 1-LH. INSIDE CYL. BKT. PL. 32540A  
(INCLUDES MOUNTING BOLTS)

- (NOT SHOWN)
- 2-SAE. CAPSCREW.....5105
- 2-SAE. HEX. NUT.....2746
- 2-LOCKWASHER.....554

- 23632-SAE. CAPSCREW.....4
- 554- LOCKWASHER.....4

- 6-SAE. CAPSCREW.....2224 I
- 6-SAE. HEX. NUT.....2750
- 6-LOCKWASHER.....556

- 22529-SAE. CAPSCREW.....4
- 554- LOCKWASHER.....4



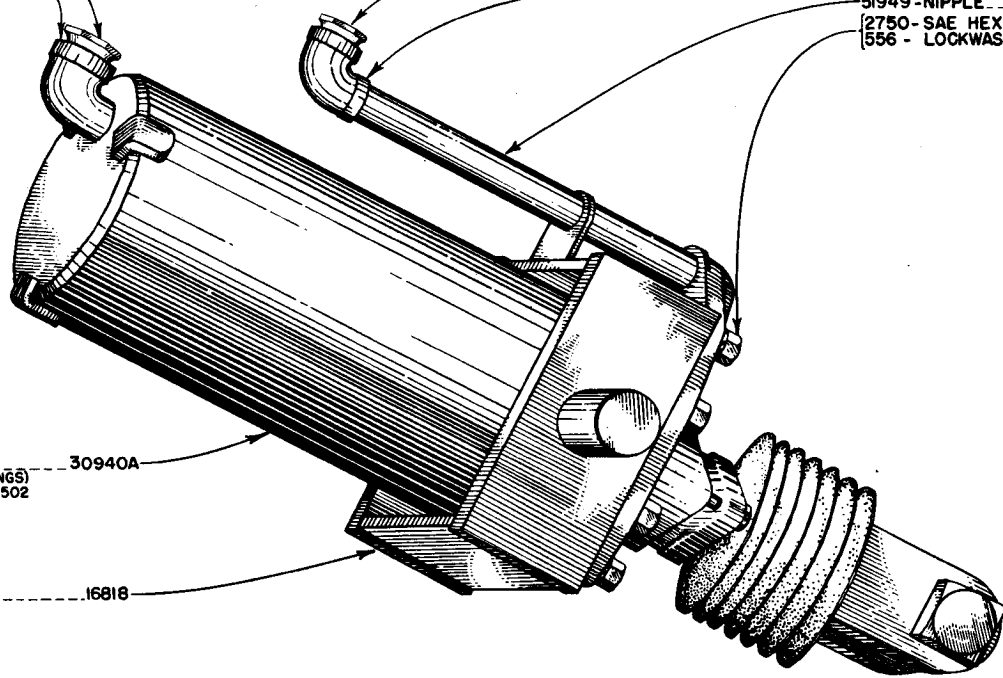
32548A LH. CYL. BKT. GROUP

B6X-89 AND UP

JACK BRACKET

1-SHOULDER BUSHING. 2193  
1-STREET ELBOW. ....2143

2193 - SHOULDER BUSHING. .... 1  
2804 - ELBOW. .... 1  
51949 - NIPPLE. .... 1  
2750 - SAE HEX NUT 3/4. .... 4  
556 - LOCKWASHER 3/4. .... 4



1-JACK GROUP  
(LESS FITTINGS) --- 30940A  
SEE PLATE 502

1-TRUNNION GROUP. .... 16818

13

**25659A JACK & TRUNNION GROUP (TWO GROUPS REQUIRED PER MACHINE)**

**805**

**JACK AND TRUNNION**

**B6X — 1 AND UP**

1-CYLINDER BASE & STUD ASSEM...3098

1-PISTON.....3098A

2-PISTON RING.....30988

1-CUP LEATHER.....30987

1-STREET ELBOW.....2143

51951 - CYLINDER HEAD & PIPE ASSEM.....1

30974 - CYLINDER HEAD GASKET.....1

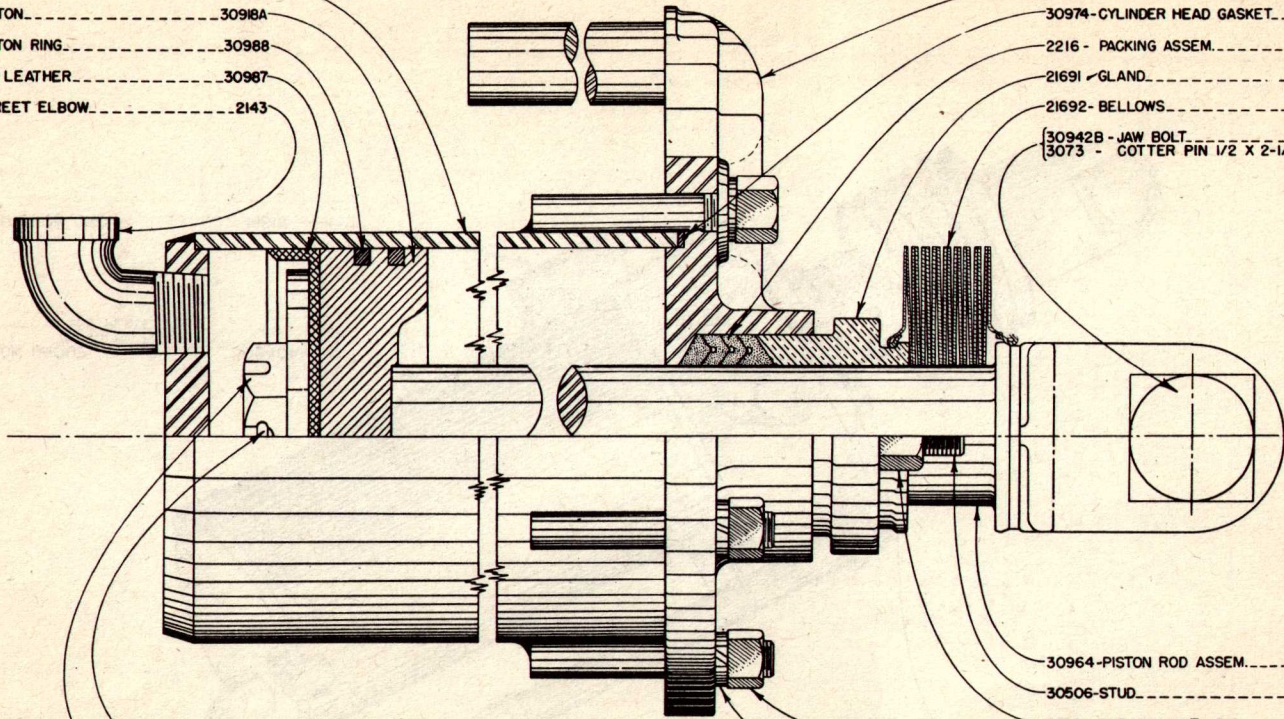
2216 - PACKING ASSEM.....1

21691 - GLAND.....1

21692 - BELLOWS.....1

30942B - JAW BOLT.....1

3073 - COTTER PIN 1/2 X 2-1/2.....1



3049 - COTTER PIN 1/4 X 3.....1

30976 - PISTON NUT.....1

30964 - PISTON ROD ASSEM.....1

30506 - STUD.....2

2746 - SAE HEX NUT 5/8.....2

21693 - SPL. SAE HEX NUT 5/8.....6

554 - LOCKWASHER 5/8.....6

30940A - JACK GROUP COMPLETE (TWO GROUPS REQUIRED PER MACHINE)

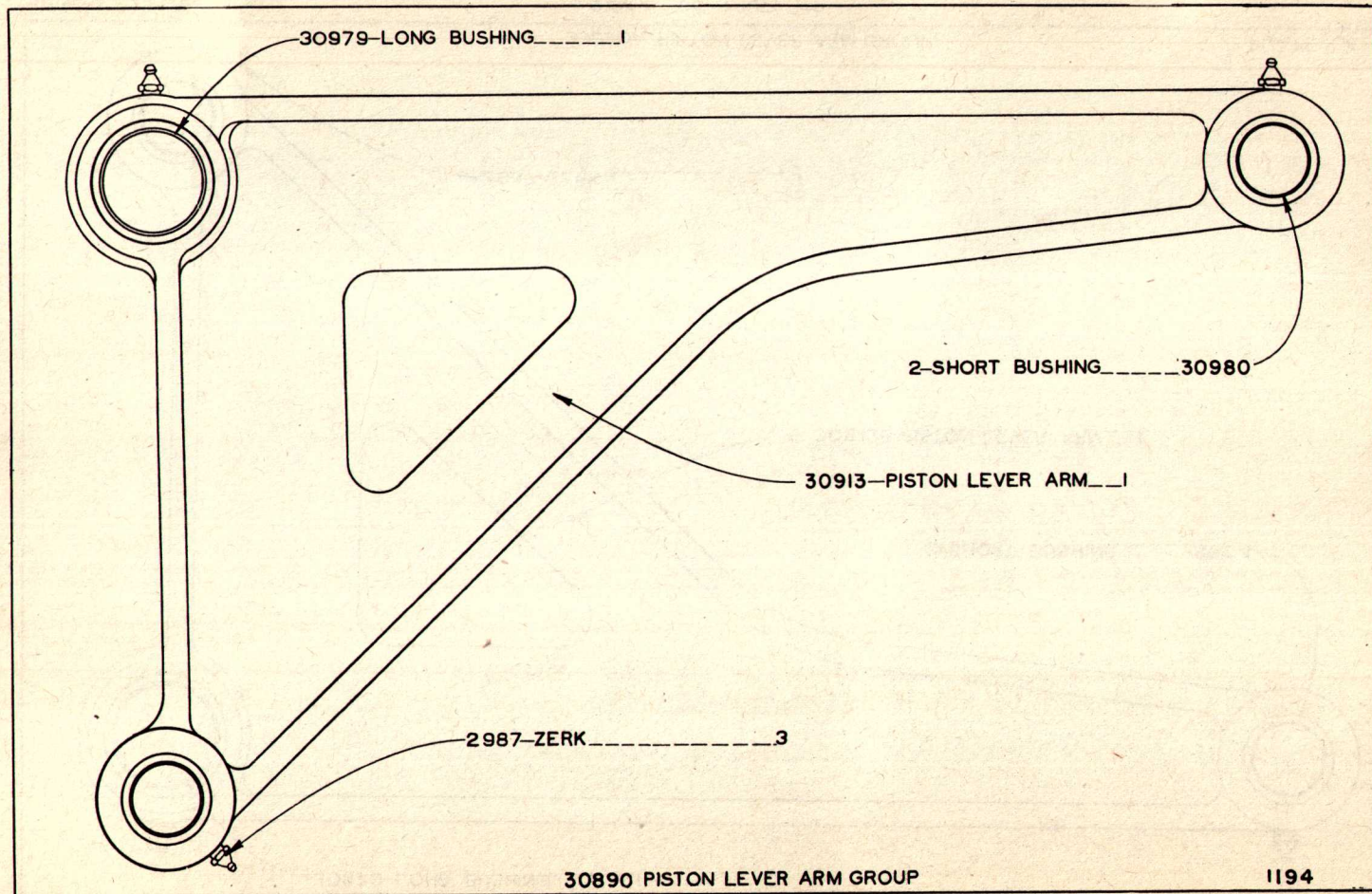
502

14

JACK

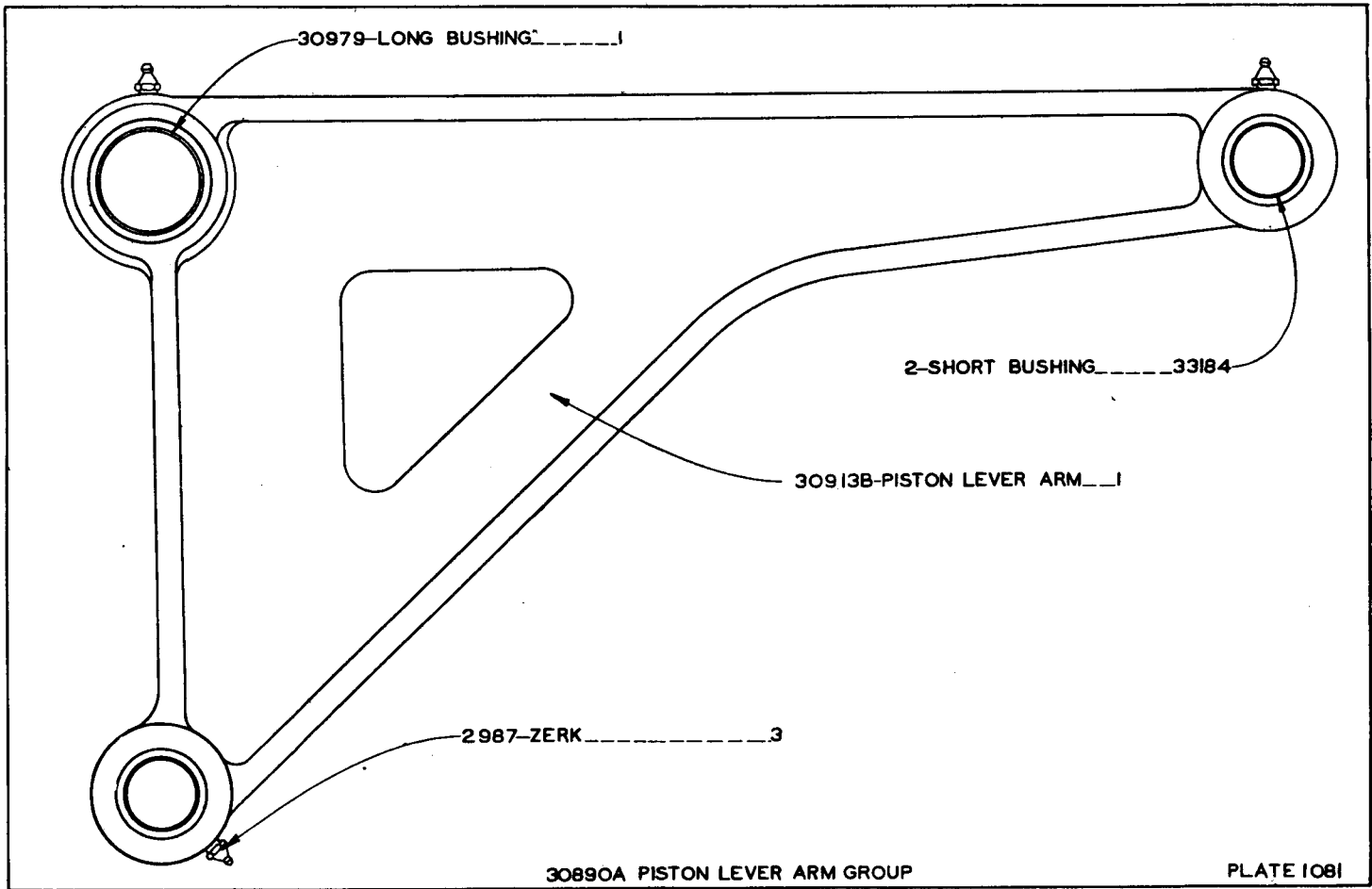
B6X — 1 AND UP

15



PISTON LEVER ARM

B6X — 1 TO 88, INCL.



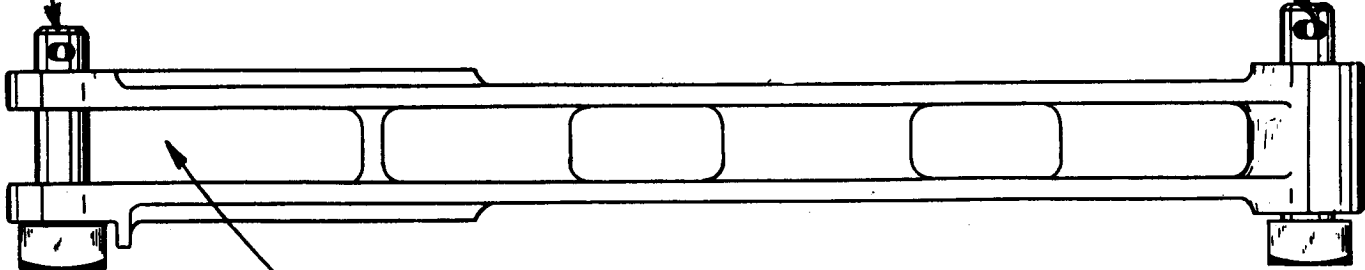
PISTON LEVER ARM

B6X — 89 AND UP

17

30942A-UPPER LINK BOLT\_\_1  
3073 COTTER PIN\_\_\_\_\_1

1- LOWER LINK BOLT\_\_ 19074A  
1 COTTER PIN \_\_\_\_\_ 3073



22 499-LIFTING LINK\_\_1

22118 LINK GROUP (2 groups required per machine)

1116

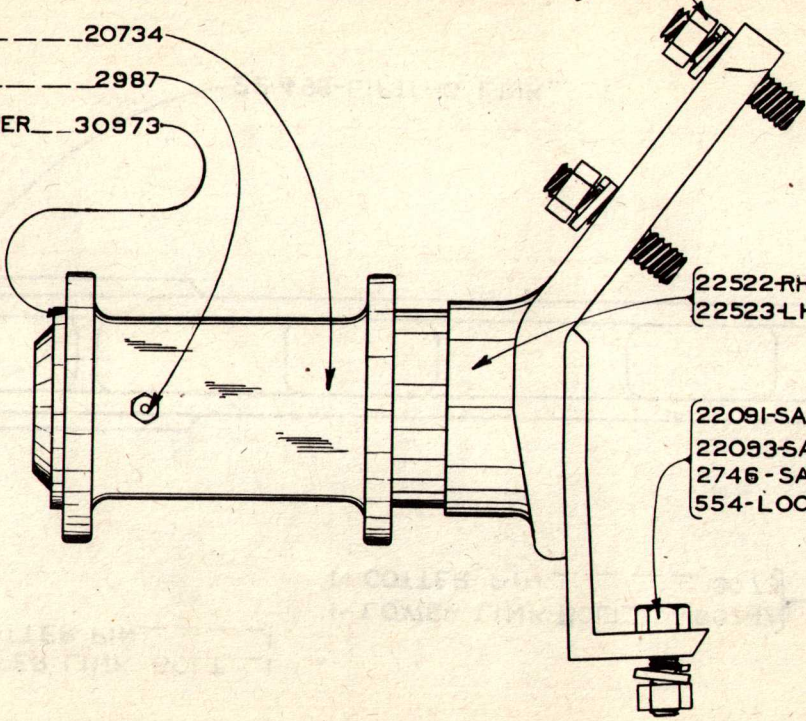
LINK

B6X — 1 AND UP

18

- 1-MF JAW BEARING \_\_\_\_\_ 20734
- 1-ZERK \_\_\_\_\_ 2987
- 1-STUB AXLE WASHER \_\_\_\_\_ 30973

- 4-STUDS \_\_\_\_\_ 13635
- 4-SAE HEX. NUT \_\_\_\_\_ 2750
- 4-LOCKWASHER \_\_\_\_\_ 556



- 22522-RH STUB AXLE ASSM. 1
- 22523-LH STUB AXLE ASSM. 1

- 22091-SAE CAPSCREW \_\_\_\_\_ 3
- 22093-SAE CAPSCREW \_\_\_\_\_ 1
- 2746-SAE HEX. NUT \_\_\_\_\_ 4
- 554-LOCKWASHER \_\_\_\_\_ 4

TRACTOR MOUNTING

22526 TRACTOR MTG.GROUP

B6X — 1 AND UP

1117



- 1- VALVE KNOB ..... 36379
- 1- VALVE LEVER ASSEM. .... 20906B
- 1- C. V. VALVE ASSEM. .... 19925A
- 1- BREATHER TUBE ASSEM. .... 13622

- 16544 - POWER PIPE ..... 1
- 22141 - SUCTION PIPE ..... 1
- 26862 - PIPE BRACKET ASSEM. .... 1  
(INCLUDES CAPSCREWS, BOLTS, ETC.)

- 31083 - CROSS PIPE BRACKET ASSEM. .... 1  
(NOT SHOWN)
- 16663 - H. P. HOSE ASSEM. .... 1  
CONSISTS OF:  
16709 - H. P. HOSE ..... 1
- 5510 - COUPLING ..... 2
- 5516 - CLAMP ..... 4
- 3468 - MACHINE BOLT ..... 4
- 6968 - L. P. HOSE ..... 1
- 2970 - CLAMP ..... 2
- 3022 - SAE CAPSCREW 5/16 X 1-1/2 ..... 2
- 2744 - SAE HEX NUT 5/16 ..... 2
- 19602 - PIPE CLAMP ..... 1
- 3457 - MACHINE BOLT ..... 1
- 17047 - JACK HOSE ASSEM. .... 4  
EACH CONSISTS OF:  
17039 - H. P. HOSE ..... 1
- 5510 - COUPLING ..... 2
- 5516 - CLAMP ..... 4
- 3468 - MACHINE BOLT ..... 4

- 1- TANK GROUP (COMPLETE) ..... 18872
- 1- L. P. HOSE 1-1/4 X 5-1/2 ..... 6971
- 2- CLAMP 1-1/4 ..... 2969
- 1- TANK & VALVE BASE PLATE ASSM. 31086  
(INCLUDES CAPSCREWS, BOLTS, ETC.)

- 31079 - RAISE CROSS PIPE ASSEM. .... 1
- 31080 - LOWER CROSS PIPE ASSEM. .... 1

22140 - PACKING BOX GROUP FOR D-6 TRACTOR

752

19

HYDRAULICS

B6X — 1 TO 32, INCL.

- 1- VALVE KNOB..... 36379
- 1- VALVE LEVER ASSEM..... 20906B
- 1- C.V. VALVE ASSEM..... 19925A
- 1- OIL STRAINER ASSEM..... 26454
- 1- FILTER TUBE CAP..... 26450
- 1- GASKET..... 26466B
- 1- BREATHER SCREEN..... 26459
- 1- BREATHER SCREEN MESH..... 26453

- 16544- POWER PIPE..... 1
- 22141- SUCTION PIPE..... 1
- 26862- PIPE BRACKET ASSEM..... 1  
(INCLUDES CAPSCREWS, BOLTS, ETC.)

- 31083 - CROSS PIPE BRACKET ASSEM..... 1  
(NOT SHOWN)
- 16663 - H. P. HOSE ASSEM..... 1  
CONSISTS OF:
- 16709 - H. P. HOSE..... 1
- 5510 - COUPLING..... 2
- 5516 - CLAMP..... 4
- 3468 - MACHINE BOLT..... 4
- 6968 - L. P. HOSE..... 1
- 2970 - CLAMP..... 2
- 3022 - SAE CAPSCREW 5/16 X 1-1/2..... 2
- 2744 - SAE HEX NUT 5/16..... 2
- 19602 - PIPE CLAMP..... 1
- 3457 - MACHINE BOLT..... 1
- 17047 - JACK HOSE ASSEM..... 4  
EACH CONSISTS OF:
- 17039 - H. P. HOSE..... 1
- 5510 - COUPLING..... 2
- 5516 - CLAMP..... 4
- 3468 - MACHINE BOLT..... 4

- 31079 - RAISE CROSS PIPE ASSEM..... 1
- 31080 - LOWER CROSS PIPE ASSEM..... 1

- 1-TANK GROUP (COMPLETE)..... 18872D
- 1-L. P. HOSE..... 7786
- 2-CLAMP..... 2970
- 2-SAE CAPSCREW 5/16 X 1-1/2..... 3022
- 2-SAE HEX NUT 5/16..... 2744
- 1-TANK & VALVE BASE PLATE ASSM. 31086  
(INCLUDES CAPSCREWS, BOLTS, ETC.)

25Q02- PACKING BOX GROUP FOR D-6 TRACTOR

746

20

HYDRAULICS

B6X — 33 TO 53, INCL. .

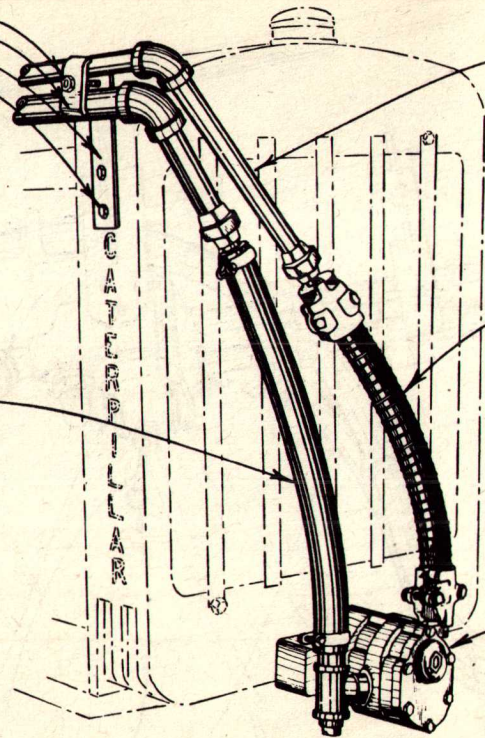
- 1- RADIATOR BRACE ASSEM. \_\_\_\_\_ 21979
- CONSISTS OF THE FOLLOWING:
- 1- MACHINE BOLT \_\_\_\_\_ 21958
- 1- PIPE CLAMP \_\_\_\_\_ 19602
- 1- BRACKET \_\_\_\_\_ 21978
- 4- USS CAPSCREW 3/8 X 1-1/4 \_\_\_\_\_ 49031
- 4- LOCKWASHER 3/8 \_\_\_\_\_ 5501

- 1- FRONT SUCTION HOSE ASSEM. \_\_\_\_\_ 20781
- CONSISTS OF THE FOLLOWING:
- 1- L. P. HOSE \_\_\_\_\_ 1207
- 2- CLAMP \_\_\_\_\_ 2970
- 2- SAE CAPSCREW 5/16 X 1-1/2 \_\_\_\_\_ 3022
- 2- SAE HEX NUT 5/16 \_\_\_\_\_ 2744

7597 - POWER PIPE \_\_\_\_\_ 1

- 16663 - FRONT POWER HOSE ASSEM. \_\_\_\_\_ 1
- CONSISTS OF THE FOLLOWING:
- 16709 - H. P. HOSE \_\_\_\_\_ 1
- 5510 - COUPLING \_\_\_\_\_ 2
- 5516 - CLAMP \_\_\_\_\_ 4
- 3468 - MACHINE BOLT \_\_\_\_\_ 4

PUMP GROUP \_\_\_\_\_ 1  
(SEE PUMP PLATES)



21

22140 & 25002 PACKING BOX GROUP FOR D-6 TRACTOR

1449

- 1 H. P. HOSE ASSEM. .... 26871
- 1 VALVE KNOB ..... 36379
- 1 VALVE LEVER ASSEM. .... 20906B
- 1 C. V. VALVE ASSEM. .... 19925A
- 1 OIL STRAINER ASSEM. .... 26454
- 1 FILTER TUBE CAP ..... 26450
- 1 GASKET ..... 26466B
- 1 BREATHER SCREEN ..... 26459
- 1 BREATHER SCREEN MESH ..... 26453

- 26862-PIPE BRKT. ASSEM. .... 1  
INCLUDES CAPSCREWS, BOLTS, ETC.
- 26873-SUCTION PIPE ..... 1
- 26861-POWER PIPE ..... 1
- NOT SHOWN
- 26373-CROSS PIPE BRKT. ASSEM. .... 1  
INCLUDES CAPSCREWS, BOLTS, ETC.
- 1207 - L.P. HOSE 1-1/2 X 26 ..... 1
- 2970 - CLAMP 1-1/2 ..... 2
- 3022 - SAE CAPSCREW 5/16 X 1-1/2 ..... 2
- 2744 - SAE HEX NUT 5/16 ..... 2
- 19602-PIPE CLAMP ..... 1
- 3450-MACHINE BOLT 1/2 X 2-1/2 ..... 1
- 27377-RAISE CROSS PIPE ASSEM. .... 1
- 27370-LOWER CROSS PIPE ASSEM. .... 1
- 27299-JACK HOSE ASSEM. .... 4
- 7786-L.P. HOSE 1-1/2 X 3 ..... 1
- 2970-CLAMPS 1-1/2 ..... 2
- 3022-SAE CAPSCREW 5/16 X 1-1/2 ..... 2
- 2744-SAE HEX NUT 5/16 ..... 2

- 1-TANK GROUP COMPLETE ..... 26471A
- 1-TANK VALVE BASE PL. ASSEM. 27374  
INCLUDES CAPSCREWS, BOLTS, ETC.

27297A & 27297B PACKING BOX GROUP FOR D6 TRACTOR

698

HYDRAULICS

B6X — 54 TO 164, INCL.

- 1-PIPE BRACKET ASSEM. .... 26864
- CONSISTS OF THE FOLLOWING:
- 1-MACHINE BOLT ..... 21958
- 1-CLAMP ..... 19602
- 1-BRACKET ..... 26865
- 4-USS CAPSCREW 3/8 X 1-1/4 ..... 4903
- 4-LOCKWASHER 3/8 ..... 550

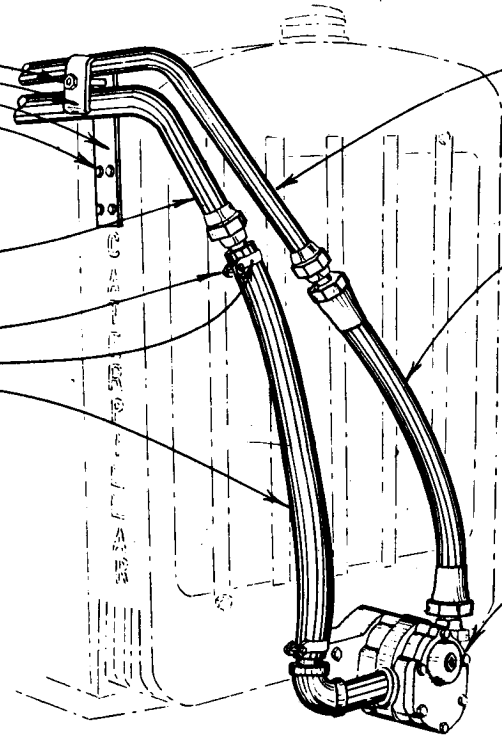
1-SUCTION PIPE ..... 26873

- 2-SAE CAPSCREW 5/16 X 1-1/2 ..... 3022
- 2-SAE HEX NUT 5/16 ..... 2744
- 2-CLAMP ..... 2970
- 1-L. P. HOSE ..... 1207

26861 - POWER PIPE ..... 1

26871 - H. P. HOSE ASSEM. .... 1

PUMP GROUP ..... 1  
(SEE PUMP PLATES)



23

27297A & 27297B PACKING BOX GROUP FOR D-6 TRACTOR

1450

HYDRAULICS

B6X — 54 TO 164, INCL.

- 1 H. P. HOSE ASSEM. .... 27520
- 1-VALVE KNOB ..... 36379
- 1-VALVE LEVER ASSEM. .... 20908B
- 1-C. V. VALVE ASSEM. .... 19925A
- 1-OIL STRAINER ASSEM. .... 26454
- 1-FILTER TUBE CAP ..... 26450
- 1-GASKET ..... 26466B
- 1-BREATHER SCREEN ..... 26459
- 1-BREATHER SCREEN MESH ..... 26453

- 26862-PIPE BRKT. ASSEM. .... 1  
INCLUDES CAPSCREWS, BOLTS, ETC.
- 26873-SUCTION PIPE ..... 1
- 26870-POWER PIPE ..... 1
- NOT SHOWN 26373-CROSS PIPE BRKT. ASSEM. .... 1  
INCLUDES CAPSCREWS, BOLTS, ETC.
- 1207 - L.P. HOSE 1-1/2 X 26 ..... 1
- 2970 - CLAMP 1-1/2 ..... 2
- 3022 - SAE CAPSCREW 5/16 X 1-1/2 ..... 2
- 2744 - SAE HEX NUT 5/16 ..... 2
- 19602-PIPE CLAMP ..... 1
- 3450-MACHINE BOLT 1/2 X 2-1/2 ..... 1
- 47761-RAISE CROSS PIPE ASSEM. .... 1
- 47762-LOWER CROSS PIPE ASSEM. .... 1
- 27299-JACK HOSE ASSEM. .... 1
- 7786-L.P. HOSE 1-1/2 X 3 ..... 1
- 2970-CLAMPS 1-1/2 ..... 2
- 3022-SAE CAPSCREW 5/16X1-1/2 ..... 2
- 2744-SAE HEX NUT 5/16 ..... 2

- 1-TANK GROUP COMPLETE ..... 26471A
- 1-TANK VALVE BASE PL. ASSEM. 27374  
INCLUDES CAPSCREWS, BOLTS, ETC.

27297D PACKING BOX GROUP FOR D6 TRACTOR

1410

HYDRAULICS

B6X — 165 AND UP

24

- 1- PIPE BRACKET ASSEM. ----- 26864  
 CONSISTS OF THE FOLLOWING:
- 1- MACHINE BOLT ----- 21958
- 1- CLAMP ----- 19602
- 1- BRACKET ----- 26865
- 4- USS CAPSCREW 3/8 X 1-1/4 ----- 4903
- 4- LOCKWASHER 3/8 ----- 550

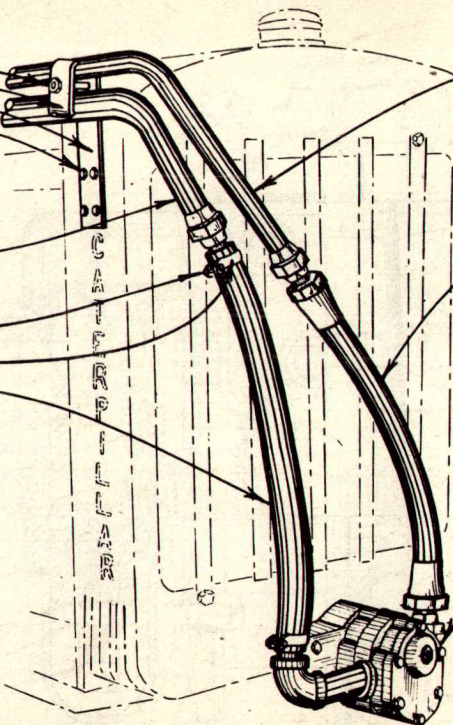
1- SUCTION PIPE ----- 26873

- 2- SAE CAPSCREW 5/16 X 1-1/2 ----- 3022
- 2- SAE HEX NUT 5/16 ----- 2744
- 2- CLAMP ----- 2970
- 1- L. P. HOSE ----- 1207

26870- POWER PIPE ----- 1

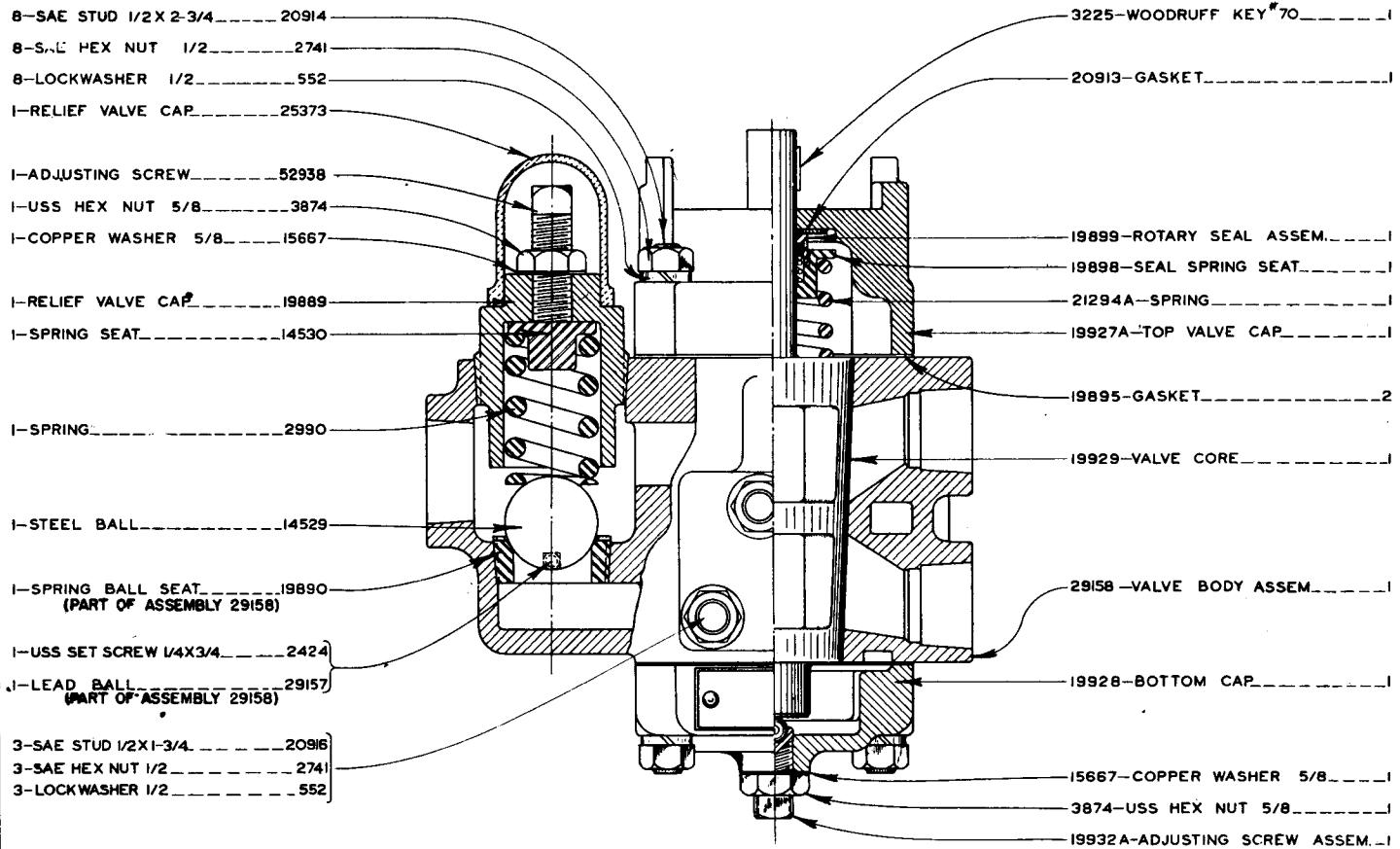
27520 - H. P. HOSE ASSEM. ----- 1

PUMP GROUP ----- 1  
 (SEE PUMP PLATES)



27297 D PACKING BOX GROUP FOR D-6 TRACTOR

1451



19925A C. V. VALVE GROUP

511

VALVE

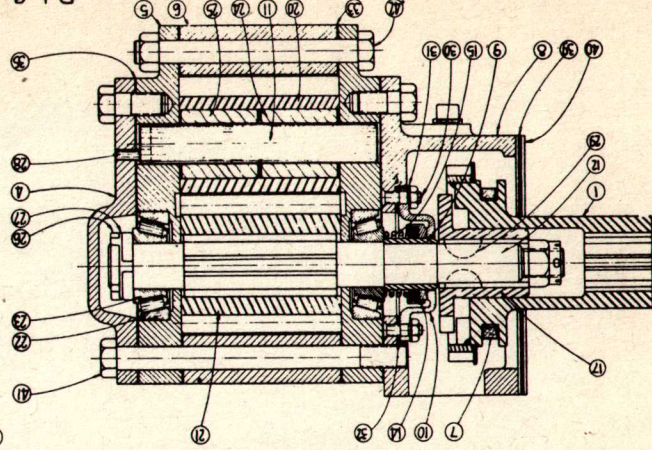
B6X — I AND UP



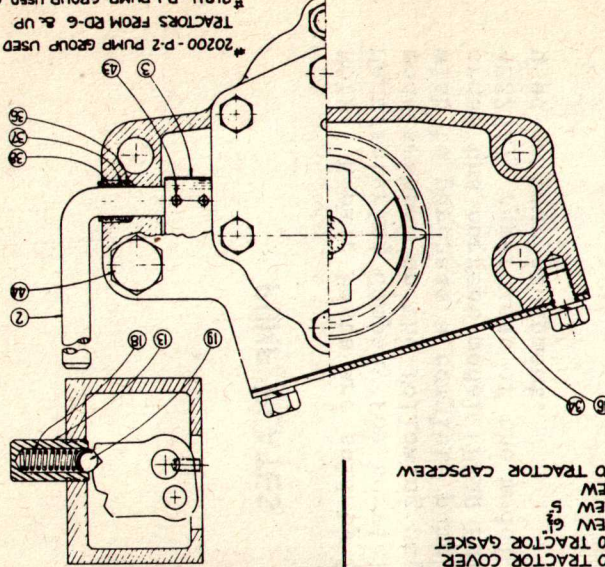
## PUMP PLATES

NOTE: Repair Parts are sold by LaPlant-Choate Manufacturing Company for servicing all pump models shown on the following pages. When you wish to purchase a complete pump, however, order the current model (P7AR Pump Group No. 42323A), regardless of the model now being used on your equipment.

SYM	REQD	NUMBER	DESCRIPTION
1	1	20223	CLUTCH GEAR ASSEMBLY
2	1	20221	CLUTCH HANDLE ASSEMBLY
3	1	20206	DETENT RACK
4	5	19251	OUTER BEARING CAP
5	4	19252	BEARING HOUSING
6	7	20212	INNER GEAR HOUSING
7	6	20215	CLUTCH FORK
8	8	20217	CLUTCH HOUSING
9	9	19179	GEAR SPACER
10	1	19196	SEAL RETAINER
11	1	20203	IDLER SHAFT
12	1	20204	MAIN DRIVE SHAFT
13	1	20205	DETENT SPRING CAGE
14	1	19176	ROTARY SEAL ASSEMBLY
15	1	19183	SEAL SPRING
16	1	20225	CLUTCH HOUSING COVER
17	1	20207	CLUTCH HUB
18	1	12911	DETENT SPRING
19	1	12921	DETENT SPRING BALL
20	1	20201	IDLER GEAR
21	1	20202	DRIVE GEAR
22	2	19297	BEARING CUP



SYM	REQD	NUMBER	DESCRIPTION
23	2	19298	BEARING CONE
24	1	21859	IDLER SHAFT BEARING
25	1	21859	IDLER SHAFT BEARING
26	2	19177	LOCK NUT
27	1	19301	LOCKWASHER
28	2	19294	IDLER SHAFT LOCK
29	2	3719	WOODRUFF KEY
30	6	19277	SEAL PLATE STUD
31	6	19208	LOCKWASHER
32	1	19236	DIAPHRAGM SEAL GASKET
33	2	19270	GEAR HOUSING GASKET
34	1	20224	CRANK GEAR HOUSING GASKET
35	2	19271	BEARING HOUSING GASKET
36	1	19175	CLUTCH SHAFT PACKING
37	1	19399	PACKING SPRING WASHER
38	1	19340	CAM HANDLE PACKING SPRING
39	1	21881	PUMP TO TRACTOR COVER
40	2	20239	PUMP TO TRACTOR GASKET
41	5	20268	CAPSCREW 5/16
42	1	5097	CAPSCREW 5/16
43	2	21828	SETSCREW
44	4	4937	PUMP TO TRACTOR CAPSCREW



P-1 & P-2 PUMP GROUP

\*20200-P-2 PUMP GROUP USED ON ALL TRACTORS FROM PD-6 & UP  
 \*21811-P-1 PUMP GROUP USED ON ALL TRACTORS FROM PD-4, THIRTY & BELOW

530

DESCRIPTION	SYM	REQD	NUMBER
1	1	21858	CLUTCH GEAR ASSEMBLY
2	1	21813	OUTER BEARING CAP
3	6	19168	INNER GEAR HOUSING
4	1	19167	IDLER SHAFT
5	1	21815	CAPSCREW
6	1	21815	CAPSCREW
7	1	21815	CAPSCREW
8	1	21815	CAPSCREW
9	1	21815	CAPSCREW
10	1	21815	CAPSCREW
11	1	21815	CAPSCREW
12	1	21810	MAIN DRIVE SHAFT
13	1	19171	IDLER GEAR
14	1	19170	DRIVE GEAR
15	1	19172	IDLER SHAFT BEARING
16	1	21815	CAPSCREW
17	1	21815	CAPSCREW
18	1	21815	CAPSCREW
19	1	21815	CAPSCREW
20	1	21815	CAPSCREW
21	1	21815	CAPSCREW
22	1	21815	CAPSCREW
23	1	21815	CAPSCREW
24	1	21815	CAPSCREW
25	1	21815	CAPSCREW
26	1	21815	CAPSCREW
27	1	21815	CAPSCREW
28	1	21815	CAPSCREW
29	1	21815	CAPSCREW
30	1	21815	CAPSCREW
31	1	21815	CAPSCREW
32	1	21815	CAPSCREW
33	1	21815	CAPSCREW
34	1	21815	CAPSCREW
35	1	21815	CAPSCREW

NOTE: WHEN PARTS FOR A P-1 PUMP ARE BEING ORDERED ALL PARTS ARE AS THEY ARE LISTED AT THE LEFT FOR THE P-2 FOLLOWING PARTS WHICH REPLACE SAME

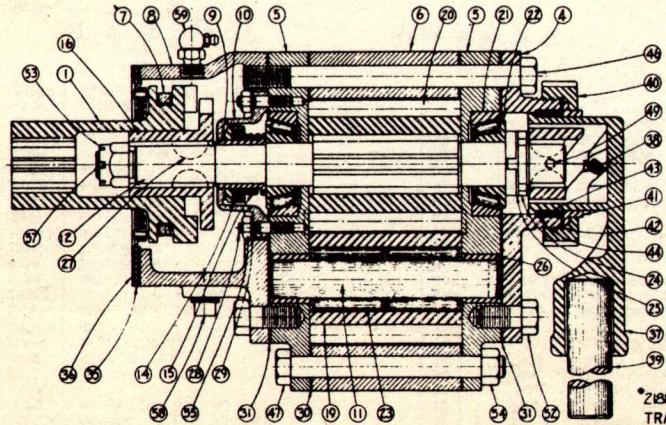
SYM	REQ'D	NUMBER	DESCRIPTION (P-2A)
1	1	2020B	CLUTCH GEAR COUPLING
2	1	20221	CLUTCH HANDLE ASSEMBLY
3	1	20206	DETENT RACK
4	1	21874	OUTER BEARING CAP
5	2	19292A	BEARING HOUSING ASSEMBLY
6	1	20212	INNER GEAR HOUSING
7	1	20219	CLUTCH FORK
8	1	21862	CLUTCH HOUSING
9	1	19179	GEAR SPACER
10	1	21884	SEAL RETAINER
11	1	20203	IDLER SHAFT -
12	1	21866	MAIN DRIVE SHAFT
13	1	20205	DETENT SPRING CAGE
14	1	19176	ROTARY SEAL ASSEMBLY
15	1	19183	SEAL SPRING
16	1	20207	CLUTCH HUB
17	1	12911	DETENT SPRING
18	1	12921	DETENT SPRING BALL
19	1	20201	IDLER GEAR
20	1	20202	DRIVE GEAR
21	2	19297	BEARING CUP
22	2	19298	BEARING CONE
23	2	21859	IDLER SHAFT BEARING
24	2	19177	LOCK NUT
25	1	19301	LOCK WASHER
26	2	23966	IDLER SHAFT BUSHING

SYM	REQ'D	NUMBER	DESCRIPTION (P-2A)
27	4	3219	WOODRUFF KEY
28	6	21890	SEAL RETAINER STUD
29	6	19206	LOCK WASHER
30	2	19270	GEAR HOUSING GASKET
31	2	19271A	BEARING HOUSING GASKET
32	1	19173	CLUTCH SHAFT PACKING
33	1	19939	PACKING SPRING WASHER
34	1	19940	CAM HANDLE PACKING SPRING
35	1	21893	GASKET & COUPLING SEAL ASSEMBLY
36	2	21887	PUMP TO TRACTOR GASKET
37	1	21865	CRANK HANDLE SOCKET
38	1	21867	DRIVE SHAFT CRANK JAW
39	1	21879	CRANK HANDLE
40	1	21869	OUTER BEARING CAP NUT
41	2	21868	CAP SEAL COLLAR
42	1	25375	CAP NUT GASKET,
43	1	21878	CRANK JAW SEAL
44	1	21888	SEAL RETAINING RING
45	4	4937	PUMP TO TRACTOR CAP SCREW
46	1	20268	CAP SCREW 5/8"
47	1	20269	CAP SCREW 5/8"
48	2	2428	SET SCREW
49	1	2427	SET SCREW
49A	4	4931	CAP SCREW 6/8"
50	1	21864	REAR PUMP BEARING CAP COVER
51	2	21889	REAR PUMP CAP COVER GASKET

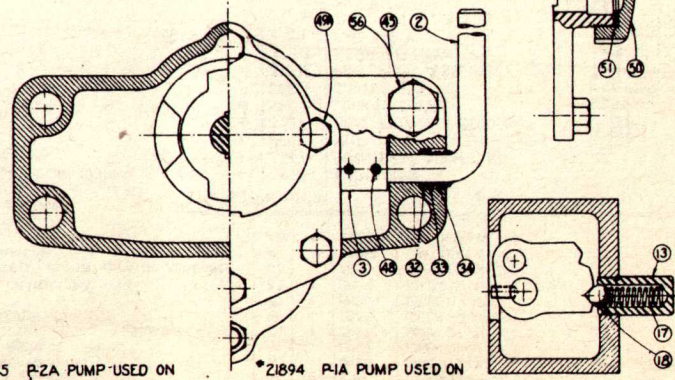
SYM	REQ'D	NUMBER	DESCRIPTION (P-1A)
4	1	21891	OUTER BEARING CAP
6	1	19168	INNER GEAR HOUSING
11	1	19167	IDLER SHAFT
12	1	21892	MAIN DRIVE SHAFT
19	1	19171	IDLER GEAR
20	1	19170	DRIVE GEAR
23	1	19172	IDLER SHAFT BEARING
46	1	21815	CAP SCREW 3/2"
47	1	23967	CAP SCREW 4"
49A	4	4926	CAP SCREW 3/2"

NOTE: WHEN PARTS FOR A P-1A ARE BEING ORDERED ALL PARTS ARE AS THEY ARE LISTED AT THE LEFT FOR THE P-2A PUMP WITH THE EXCEPTION OF THE FOLLOWING WHICH REPLACE SAME.

SYM	REQ'D	NUMBER	DESCRIPTION (P-2A)
52	2	4908	CAP SCREW
53	1	2747	MAIN DRIVE SHAFT NUT
54	1	2741	NUT
55	6	2737	SEAL RETAINER STUD NUT
56	4	556	LOCK WASHER
57	1	3029	COTTER PIN
58	1	2102	PIPE PLUG
59	1	3228	ZERK FITTING



\*21885 P-2A PUMP USED ON TRACTORS RD-6 & UP



\*21894 P-1A PUMP USED ON TRACTORS RD-4, 30 & BELOW

P-1A & P-2A PUMP GROUP

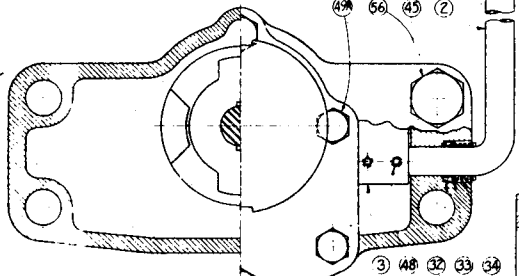
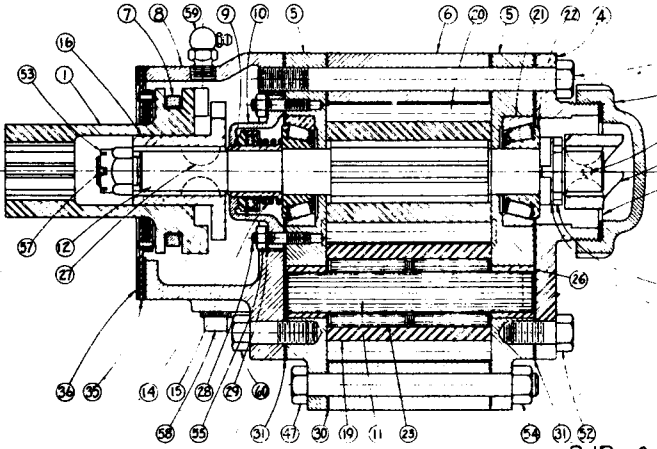
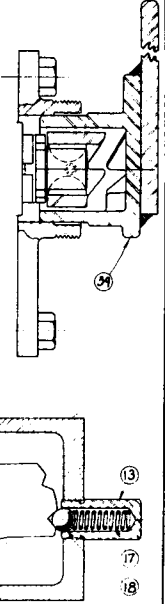
29

PUMP

SYM.	REQ'D	NUMBER	DESCRIPTION (P-2B)	SYM.	REQ'D	NUMBER	DESCRIPTION (P-2B)	SYM.	REQ'D	NUMBER	DESCRIPTION (P-1B)
1	1	20208	CLUTCH GEAR COUPLING	27	4	3219	WOODRUFF KEY	4		21891	OUTER BEARING CAP
2	1	20221	CLUTCH HANDLE ASSEMBLY	28	6	21890	SEAL RETAINER STUD	6	1	19168	INNER GEAR HOUSING
3	1	20206	DETENT RACK	29	6	19208	LOCK WASHER	11	1	19167	IDLER SHAFT
4	1	21874	OUTER BEARING CAP	30	2	19270	GEAR HOUSING GASKET	12	1	21892	MAIN DRIVE SHAFT
5	2	192524	BEARING HOUSING ASSEMBLY	31	2	19271A	BEARING HOUSING GASKET	19	1	19171	IDLER GEAR
6	1	20212	INNER GEAR HOUSING	32	1	19175	CLUTCH SHAFT PACKING	20	1	19170	DRIVE GEAR
7	1	20215	CLUTCH FORK	33	1	19939	PACKING SPRING WASHER	23	1	19172	IDLER SHAFT BEARING
8	1	21862	CLUTCH HOUSING	34	1	19940	CAM HANDLE PACKING SPRING	46	1	21815	CAP SCREW 5/8"
9	1	19179	GEAR SPACER	35	1	21893	GASKET & COUPLING SEAL ASSEMBLY	47	1	23967	CAP SCREW 4"
10	1	21884	SEAL RETAINER	36	2	21887	PUMP TO TRACTOR GASKET	49A	4	4926	CAP SCREW 5/8"
11	1	20203	IDLER SHAFT	37							
12	1	21866	MAIN DRIVE SHAFT	38	1	21867	DRIVE SHAFT CRANK JAW				
13	1	25365	DETENT SPRING CAGE	39	1	25379	AUXILIARY FRONT PUMP CRANK ASSEMBLY				
14	1	19176	ROTARY SEAL ASSEMBLY	40	1	21864A	OUTER BEARING CAP				
15	1	19183	SEAL SPRING	41							
16	1	20207	CLUTCH HUB	42							
17	1	25361	DETENT SPRING	43	1	25375	FRONT CAP GASKET				
18	1	12921	DETENT SPRING BALL	44							
19	1	20201	IDLER GEAR	45	4	4937	PUMP TO TRACTOR CAP SCREW				
20	1	20202	DRIVE GEAR	46	1	20268	CAP SCREW 6 1/2"				
21	2	19297	BEARING CUP	47	1	20269	CAP SCREW 5"				
22	2	19298	BEARING CONE	48	2	2428	SET SCREW				
23	2	21859	IDLER SHAFT BEARING	49	1	2427	SET SCREW				
24	2	19177	LOCK NUT	49A	4	4931	CAP SCREW 6 1/2"				
25	1	19301	LOCK WASHER	50							
26	1	23966	IDLER SHAFT BUSHING	51							

NOTE: WHEN PARTS FOR A P1C ARE BEING ORDERED ALL PARTS ARE AS THEY ARE LISTED AT THE LEFT FOR THE P-2C PUMP WITH THE EXCEPTION OF THE FOLLOWING WHICH REPLACE SAME.

SYM.	REQ'D	NUMBER	DESCRIPTION (P-2)
52	1	4908	CAP SCREW
53	1	2747	MAIN DRIVE SHAFT NUT
54	1	2741	NUT
55	6	2737	SEAL RETAINER STUD NUT
56	4	556	LOCK WASHER
57	1	3029	COTTER PIN
58	1	21972	PIPE PLUG ASSEMBLY
59	1	3228	ZERK FITTING
60	1	4909	CAP SCREW



\*25339 P1B PUMP (FRONT)  
 \*25382 P2B PUMP (FRONT)  
 \*21836 P1A PUMP (REAR)  
 \*22009 P2A PUMP (REAR)

P2C(F) & P2B(R) PUMP USED ON TRACTORS RD-6 & UP  
 P-1B & P-2B PUMP GROUP

P1C(F) & P1B(R) PUMP USED ON TRACTORS RD-4, 30 & BELOW

30

PUMP



(A) THESE PARTS FORM A GROUP AND CANNOT  
BE PURCHASED SEPARATELY.  
ORDER GROUP 44209A

I-COUPLING HOUSING ASSM. 41501  
(consists of)

I-HOUSING \_\_\_\_\_ 41502

I-SEAL SEAT \_\_\_\_\_ 26236

I-SEAL ASSM. \_\_\_\_\_ 26238

I-DRIVE SHAFT & GEAR ASSM. 41517

I-DRAIN PLUG \_\_\_\_\_ 21972

I-IDLER SHAFT & GEAR ASSM. 26244

42320-PLATE \_\_\_\_\_ 2

26239-BEARING \_\_\_\_\_ 4

25375-GASKET \_\_\_\_\_ 1

21864B-COVER \_\_\_\_\_ 1

21867-CRANK JAW \_\_\_\_\_ 1

2427-SET SCREW \_\_\_\_\_ 1

3219-KEY \_\_\_\_\_ 2

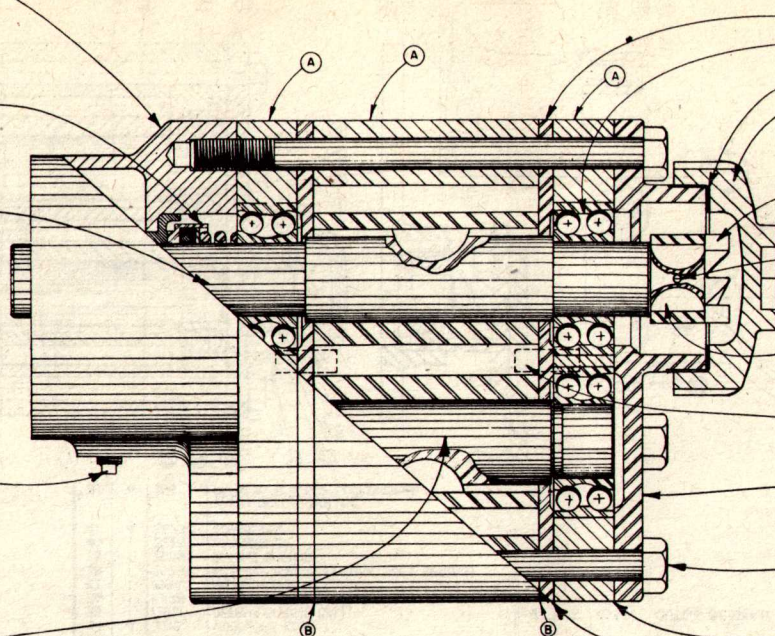
43912-DOWEL PIN \_\_\_\_\_ 4

26256-OUTER BEARING CAP \_\_\_\_\_ 1

4920-USS. CAPSCREW \_\_\_\_\_ 6

26253-GASKET \_\_\_\_\_ 2

42316-GASKET \_\_\_\_\_ 2



*SPECIAL NOTE FOR ORDERING REPAIRS*

PUMPS WITH ROUND POWER & SUCTION PORT  
BOSSSES USE 2-19270-GASKETS AT (B)  
PUMPS WITH OCTAGON POWER & SUCTION  
PORT BOSSSES DO NOT USE GASKETS AT (B)

42323A P7A-R PUMP GROUP

1139

32

PUMP

41516A - DRIVE SHAFT COUPLING ASSEMBLY-----|

CONSISTS OF THE FOLLOWING:

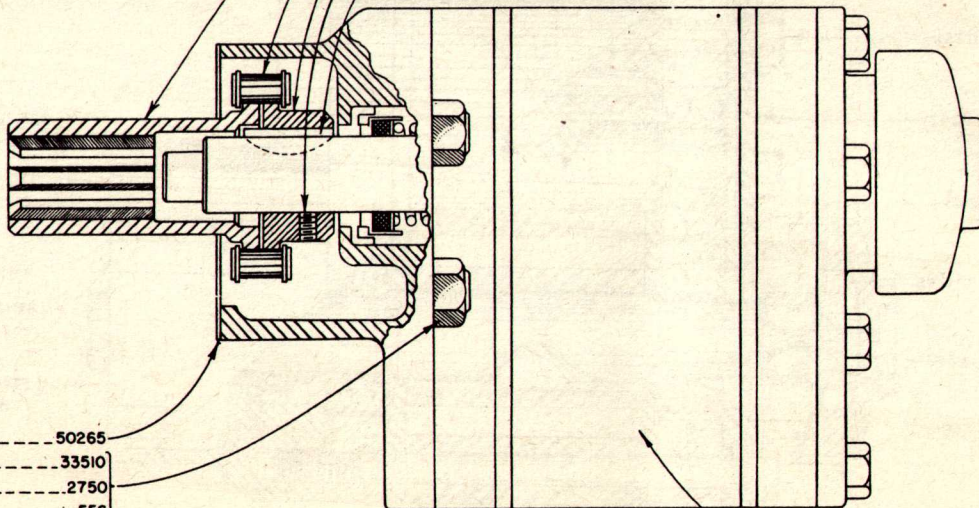
50565 - SPLINE COUPLING-----|

50249 - CHAIN-----|

50504 - SPROCKET COUPLING-----|

3095 - SETSCREW-----|

41509 - KEY-----|



1 - VELLUMOID GASKET-----50265  
4 - STUD 3/4 X 5-7/8-----33510  
4 - SAE HEX NUT 3/4-----2750  
4 - LOCKWASHER 3/4-----556

42323A - P7A-R PUMP GROUP-----|  
(SEE PLATE 1139)

42960-B P7A-R PUMP & COUPLING GROUP

1419

PUMP

- 1-COUPLING HOUSING ASSM. --- 41501  
(CONSISTS OF:)
- 1- HOUSING --- 41502
- 1- SEAL SEAT --- 26236

- 1- SEAL ASSM. --- 26238

- 1- DRIVE SHAFT & GEAR ASSM. --- 41517

- 1- GASKET --- 21887

- 1- DRAIN PLUG --- 21972

- 1- IDLER SHAFT & GEAR ASSM. --- 26244

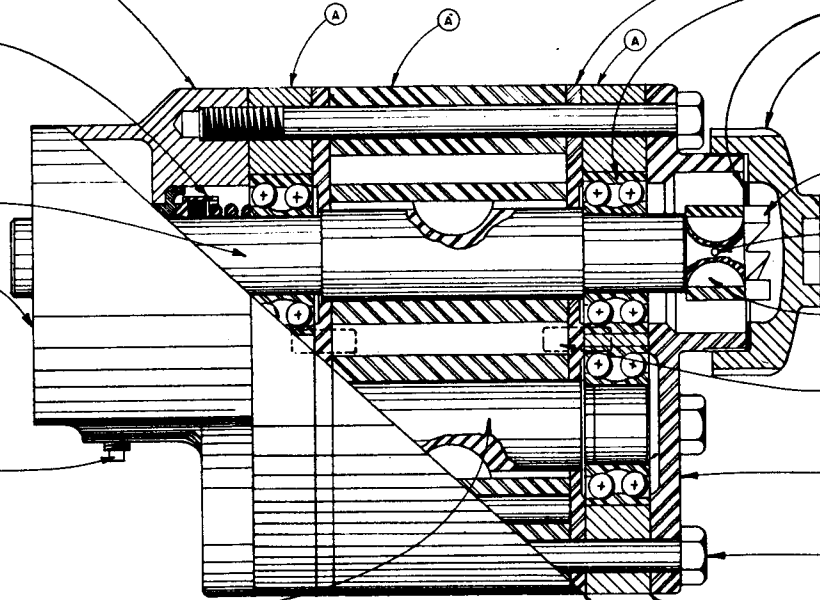
- 42320- PLATE --- 2
- 26239- BEARING --- 4
- 25375- GASKET --- 1
- 21864B- COVER --- 1

- 21867- CRANK JAW --- 1
- 2427- SET SCREW --- 1

- 3219- KEY --- 2
- 43912- DOWEL PIN --- 4

- 26256- OUTER BEARING CAP --- 1
- 4920- USS CAPSCREW --- 6

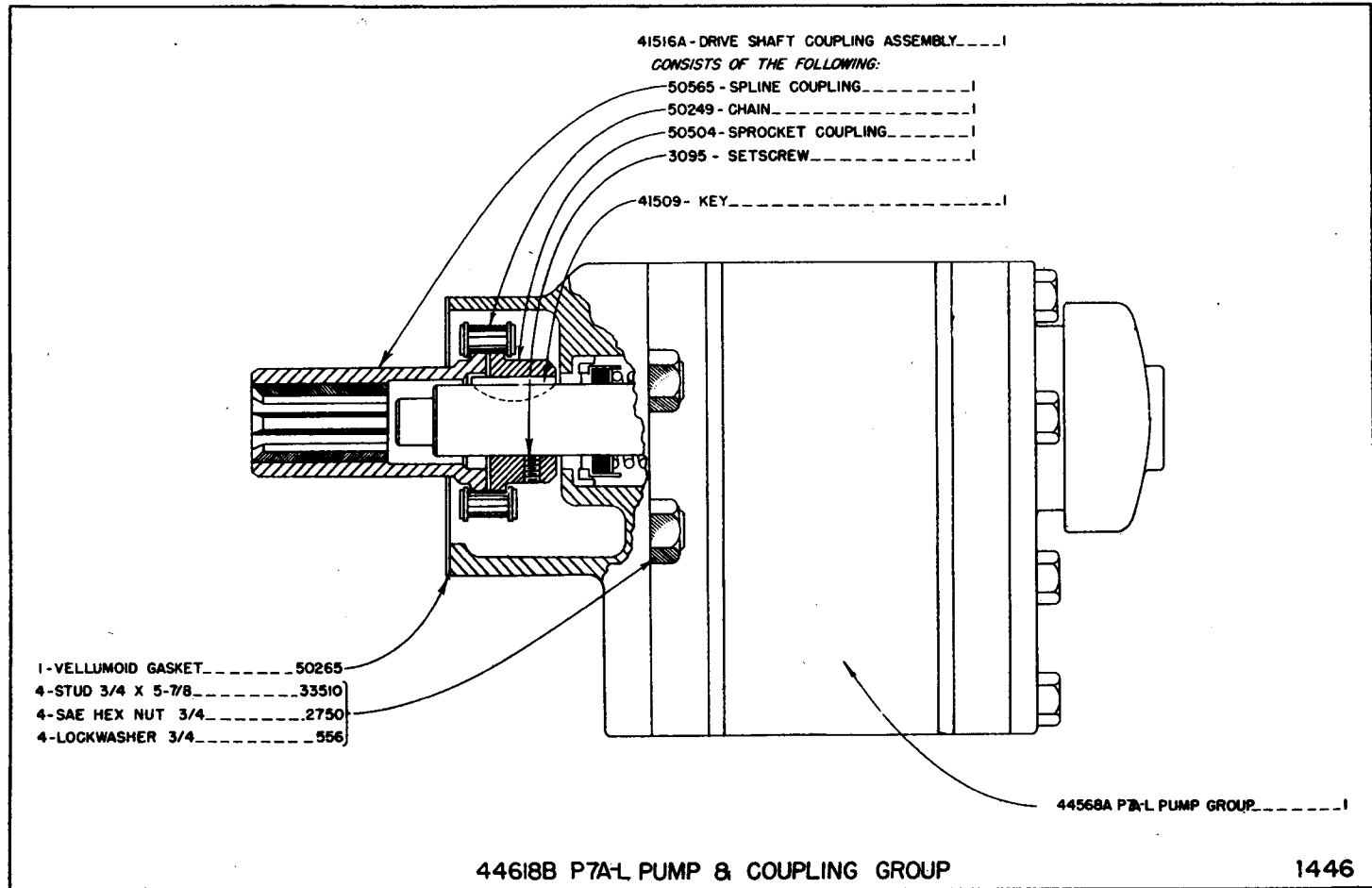
- 26253- GASKET --- 2
- 42316- GASKET --- 2



Ⓐ THESE PARTS FORM A GROUP AND CANNOT BE PURCHASED SEPARATELY. ORDER GROUP 44209

PUMP



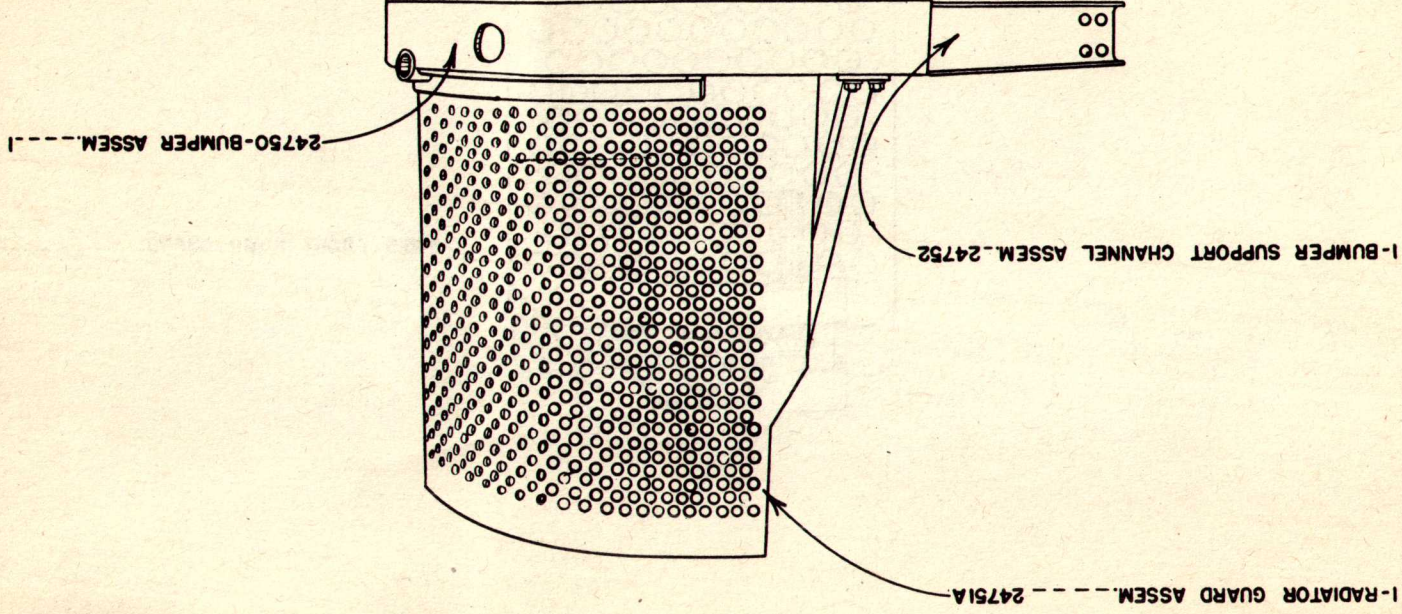


PUMP

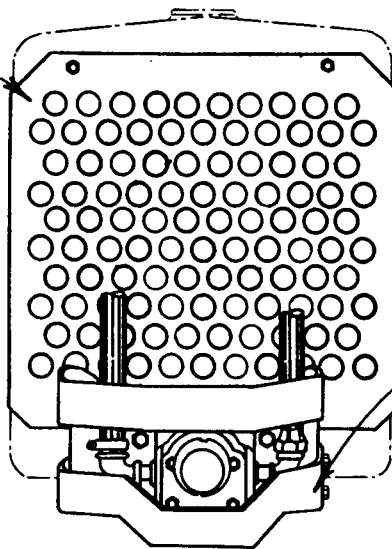
1446

RADIATOR GUARD & BUMPER FOR D6 (RD6) & 40 DIESEL TRACTORS

1452



1 - RADIATOR GUARD ASSEM. .... 24665



33513 - FRONT PUMP GUARD ..... 1

RADIATOR GUARD & PUMP GUARD FOR D6 (RD6) & 40 DIESEL TRACTORS

1453

RADIATOR GUARD

B6X — 1 AND UP

DRILLED HOLES IN "CATERPILLAR" TRACK FRAMES FOR ATTACHING LAPLANT-CHOATE EQUIPMENT ON D6 and R5 TRACTORS.

Diagram "A" shows the former hole spacing and drilling used on former Tractors when Tractors were ordered drilled for LaPlant-Choate equipment on special request.

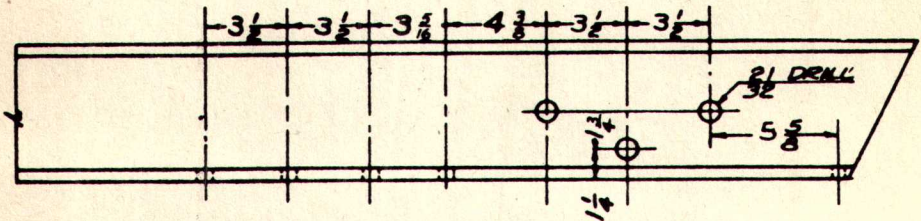


Diagram A

Diagram "B" shows the revised hole spacing and drilling which will be standard on all new Tractors effective with D6 Tractors 2H6146 and up R5 Tractors 4H1137 and up.

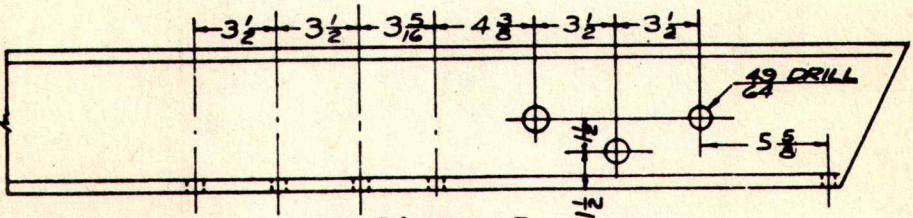


Diagram B

If you receive new equipment drilled in accordance with diagram "B" and attempt to put it on a Tractor which has the former drilling, it will be necessary to ream out the two upper horizontal holes in track channels with 49/64" drill using 3/4" bolts and leaving the lower horizontal bolt hole blank.