

SM 2035

MODEL D CARRYALL SCRAPER

parts catalog



F O R E W O R D

- A LeTOURNEAU-WESTINGHOUSE Parts Catalog consists of a complete breakdown into assemblies and groups of an entire machine. The use of exploded views and cross section illustrations, make the catalog an easy reference for ordering correct parts with the minimum of detail.
 - Quantities listed with each assembly or groups are the total number used for that assembly or group and not necessarily the total per machine.
 - The terms "right hand" and "left hand" refer to the view point from the rear of the machine.
 - WHEN ORDERING PARTS ALWAYS GIVE THE SERIAL NUMBER OF THE MACHINE.
 - WHEN ORDERING PARTS FOR GEAR BOXES, ELECTRIC MOTORS, GENERATORS, TORQUE CONVERTERS AND TOURNAMATIC TRANSMISSIONS, ALSO INCLUDE THE ASSEMBLY NUMBER STAMPED ON THE SERIAL PLATE ATTACHED TO THESE UNITS.
- REPLACEMENT PARTS MUST DO MORE THAN FIT.
- Genuine LeTOURNEAU-WESTINGHOUSE parts can be ordered from your nearest authorized LeTOURNEAU-WESTINGHOUSE Distributor.

CABLE THREADING INSTRUCTIONS

HOIST CABLE

(Cable extending from Power Control Unit right cable drum to hoist sheaves on pushbeam.)

From right drum of Power Control Unit, cable enters the top of Fairlead sheave O
 Then down and under bottom of stationary sheave..... P
 Then up and over top of right sheave in housing..... Q
 Then back and around top of right hand sheave in housing..... R
 Then forward and enter bottom of left sheave in housing..... Q
 Then back and enter right hand side of horizontal sheave in housing..... R
 Then forward and enter top of sheave in housing..... S
 Then back and enter bottom of extreme left sheave in housing..... R
 Then forward and dead end cable at cable wedge T on side of housing..... S

APRON LIFT CABLE

(Cable extending from apron sliding sheave above springpipe to apron.)

From wedge V on apron, cable goes up and over top of sheave in housing..... U
 Then down springpipe and dead end cable at wedge on sliding housing..... E

DUMP CABLE

(Cable extending from Power Control Unit left cable drum to sliding sheave housings above springpipe.)

From cable spool at rear of Scraper, unspool approximately 95 feet of cable, leaving extra cable wrapped on reel.

Take end of cable and push through hole in side sheet channel and then forward and out hole at end of channel just below cable wedge..... N

Then back along sidesheet and enter bottom of tailgate sheave..... M

Then forward and enter bottom of sidesheet housing..... L

Then up and over top of A-Frame housing..... K

Then across and over top of center A-Frame sheave..... J

Then on across and enter top of front sheave in housing..... G

Then down and under lower sheave in housing..... H

Then back along sidesheet and enter bottom of tailgate housing..... I

Then forward and enter bottom of top sheave in housing..... H

Then up and through rear sheave in housing..... G

Then up and along A-Frame and around A-Frame housing..... F

Then back along springpipe and pass underneath sliding sheave housing E and around bottom sheave in housing..... D

Then up along springpipe and around top of sheave in sliding sheave housing..... E

Then back along springpipe and around top sheave in housing..... D

Then up along springpipe and through cable loop C on top of sliding housing..... E

Then up and over top of sheave in housing..... B

Then forward and over top of stationary sheave in housing..... A

Then down and under bottom sheave in housing..... A

Then forward and through the Power Control Unit double-deck sheaves and onto the Power Control Unit left cable drum. Place two wraps of cable on drum.

With tailgate in rear position and apron lowered, take slack out of cable and anchor cable at cable wedge N on sidesheet.

Spool excess cable onto cable spool and tighten the wing bolt to keep cable spool from turning.

CABLE LENGTHS

DUMP CABLE

E-1223 1/2x6x19=300' Spool
 1/2x6x19=95' Required

HOIST CABLE

E-1218 1/2x6x19=65' Long

SLIDING SHEAVE TO APRON

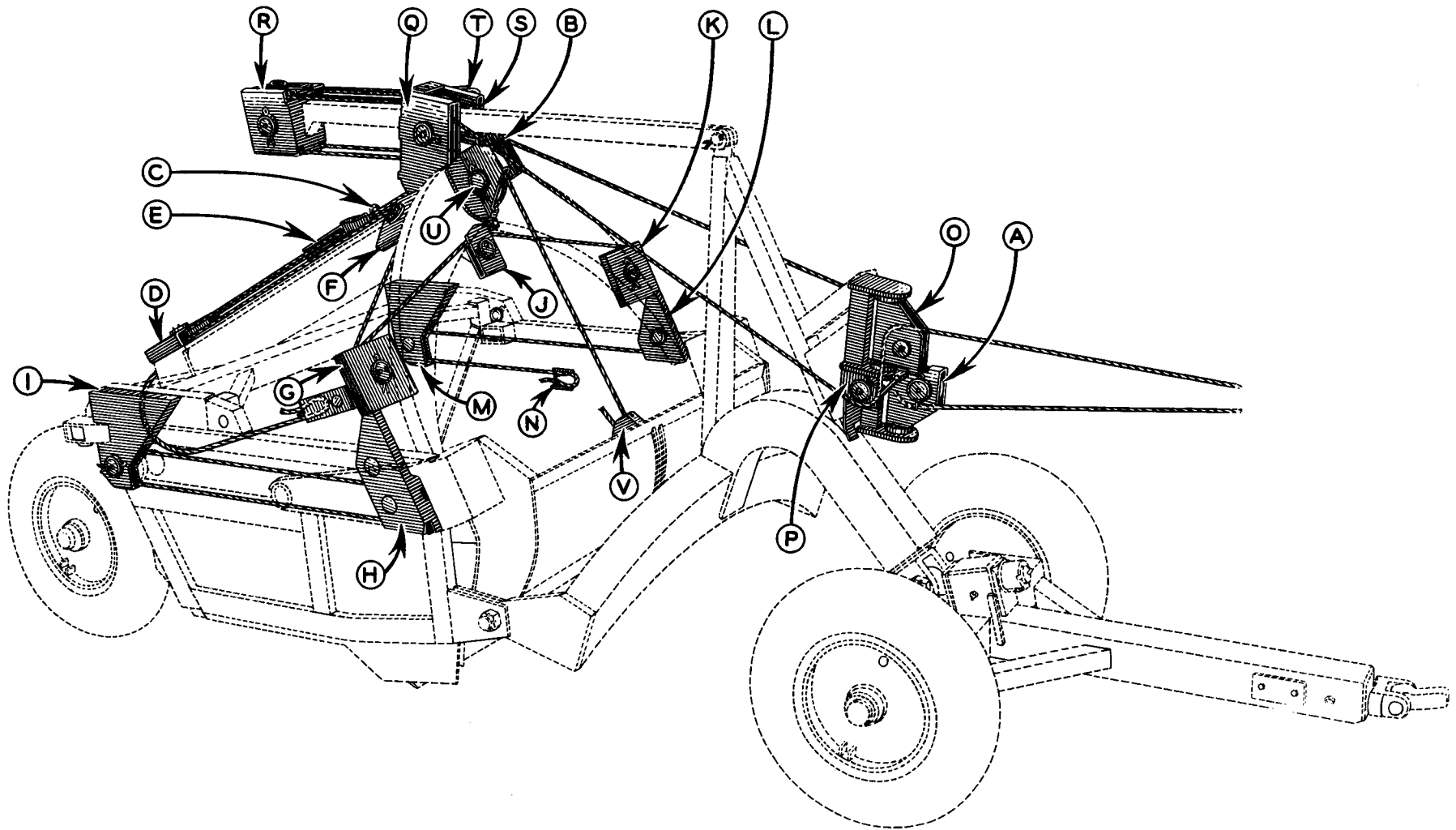
E-5287 1/2x6x19=8'-6" Long

TAILGATE TO SPIRAL SHEAVE

R-1801 1/2x6x19=8' Long

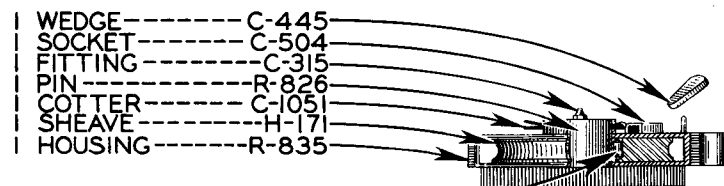
SPIRAL SHEAVE TO SPRINGPIPE

I R-7191 1/2x6x19=9'-6" Long



CABLE THREADING DIAGRAM

ALWAYS GIVE SERIAL NUMBER WHEN ORDERING PARTS



- 1 WEDGE-----C-445
- 1 SOCKET-----C-504
- 1 FITTING-----C-315
- 1 PIN-----R-826
- 1 COTTER-----C-1051
- 1 SHEAVE-----H-171
- 1 HOUSING-----R-835

- 1 HOUSING-----R-3493
- 4 BEARING-----H-225
- 3 COTTER-----C-1051
- 1 PIN-----R-140
- 2 CAPSCREW-----C-5759
- 2 NUT-----C-1523
- 2 LOCKWASHER---C-1540

- H-171 SHEAVE-----4
- C-504 SOCKET-----1
- C-445 WEDGE-----1
- R-826 PIN-----2
- C-315 FITTING-----4

- 1 HOUSING AND BOLT PLATE-R-136

- R-825 SHEAVE-----1
- H-225 BEARING-----1
- R-826 PIN-----1
- C-315 FITTING-----1
- C-1051 COTTER-----1

- C-1613 CAPSCREW-----1
- C-1540 LOCKWASHER---1

- 1 BEARING-----H-225
- 4 SHEAVE-----H-171
- 4 BEARING-----H-225
- 2 COTTER-----C-1051
- 2 PIN-----R-140
- 4 FITTING-----C-315
- 1 WEDGE-----C-2283
- 1 SOCKET-----C-504
- 1 PLATE-----C-1414
- 3 SPRING-----C-1915
- 1 WING BOLT--C-4509
- 1 WASHER-----C-2068
- 1 TOOL BOX-----D-129

- 1 BODY STR-----R-130

- 2 PIN-----R-135
- 4 COTTER-----C-1518
- 2 SHEAVE-----R-825
- 2 BEARING-----H-225
- 2 PIN-----R-139
- 2 FITTING-----C-315
- 2 COTTER-----D-1032

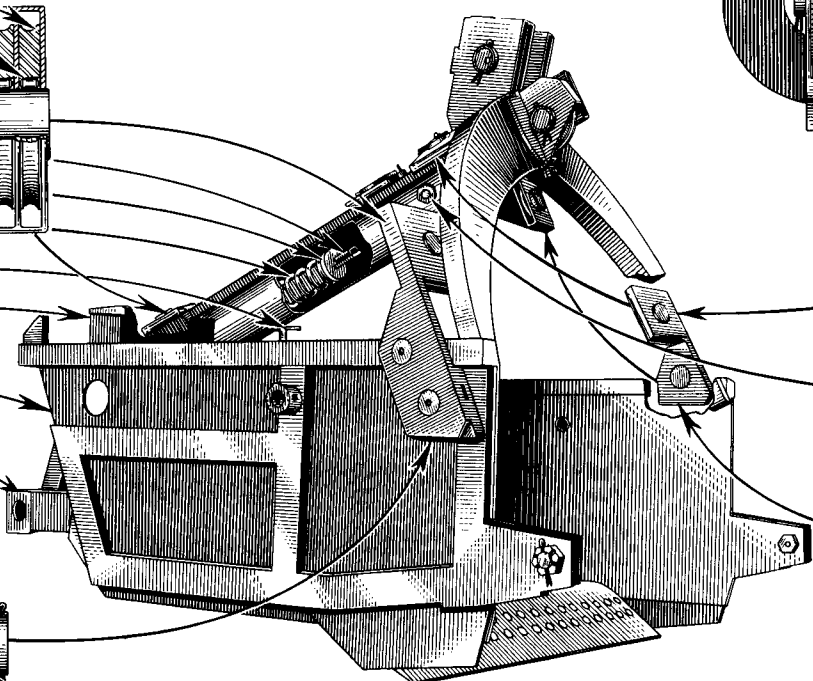
- H-171 SHEAVE-----2
- H-225 BEARING-----2
- C-1051 COTTER-----2
- R-826 PIN-----2
- C-315 FITTING-----2

- C-1533 NUT-----1
- C-5797 BOLT-----1
- C-1545 LOCKWASHER---1

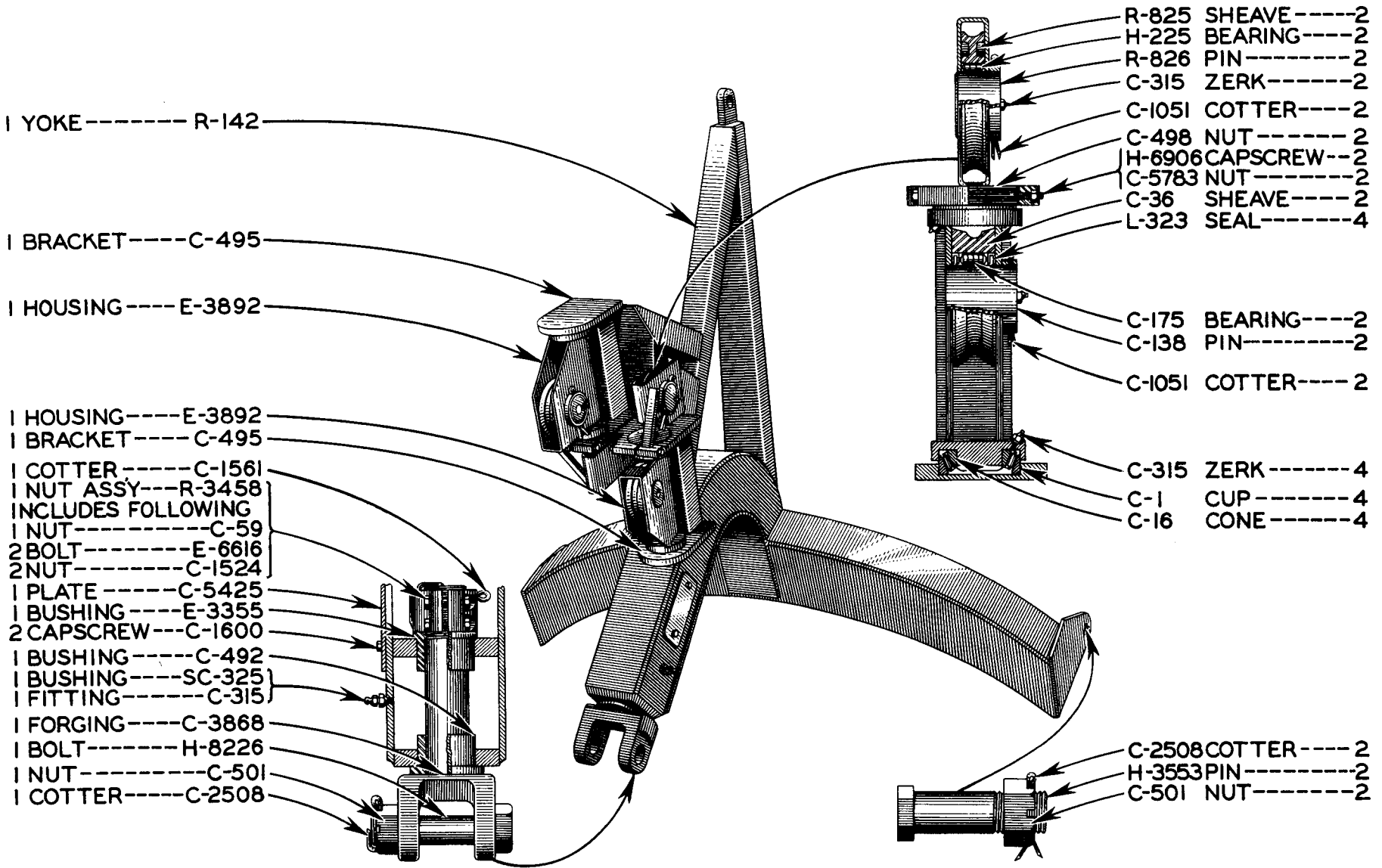
- R-825 SHEAVE-----2
- H-225 BEARING-----2
- D-1032 COTTER-----1
- R-139 PIN-----1
- C-315 FITTING-----2
- USE FOLLOWING FOR SHV. UNDER A-FRAME:
- R-826 PIN-----1
- C-1051 COTTER-----1
- R-3495 BOTTOM-----1

- D-1958 BLADE WRENCH-1

- R-3770 BLADE (CENTER)--1
- R-3771 BLADE-----2
- D-1957 PLOWBOLT-----36
- E-3494 BASE-----1

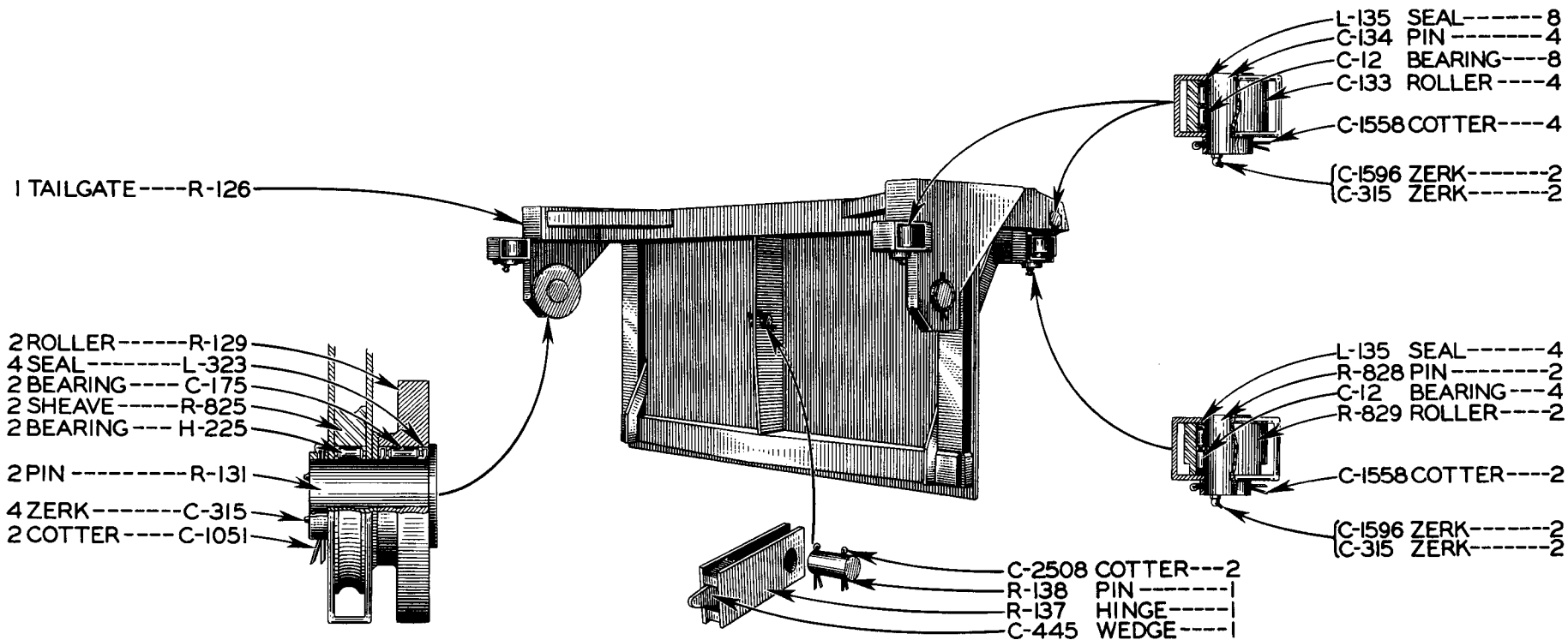


MAIN BODY GROUP



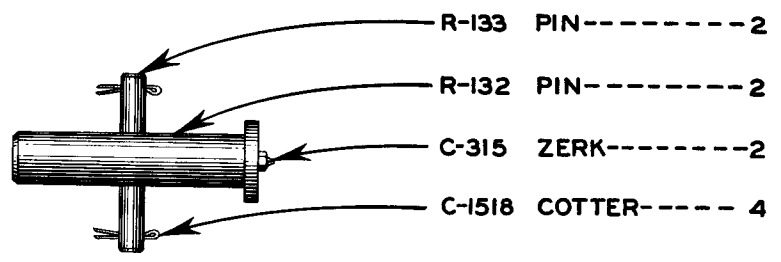
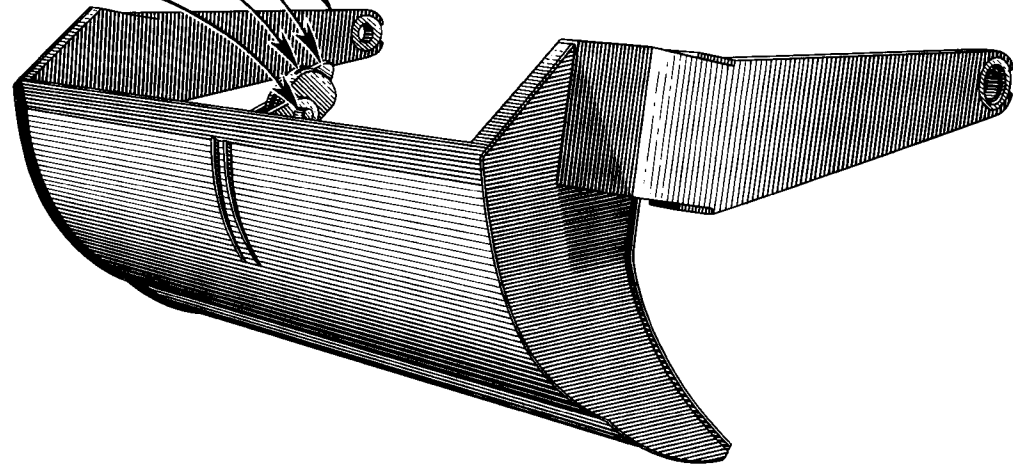
YOKE GROUP

ALWAYS GIVE SERIAL NUMBER WHEN ORDERING PARTS



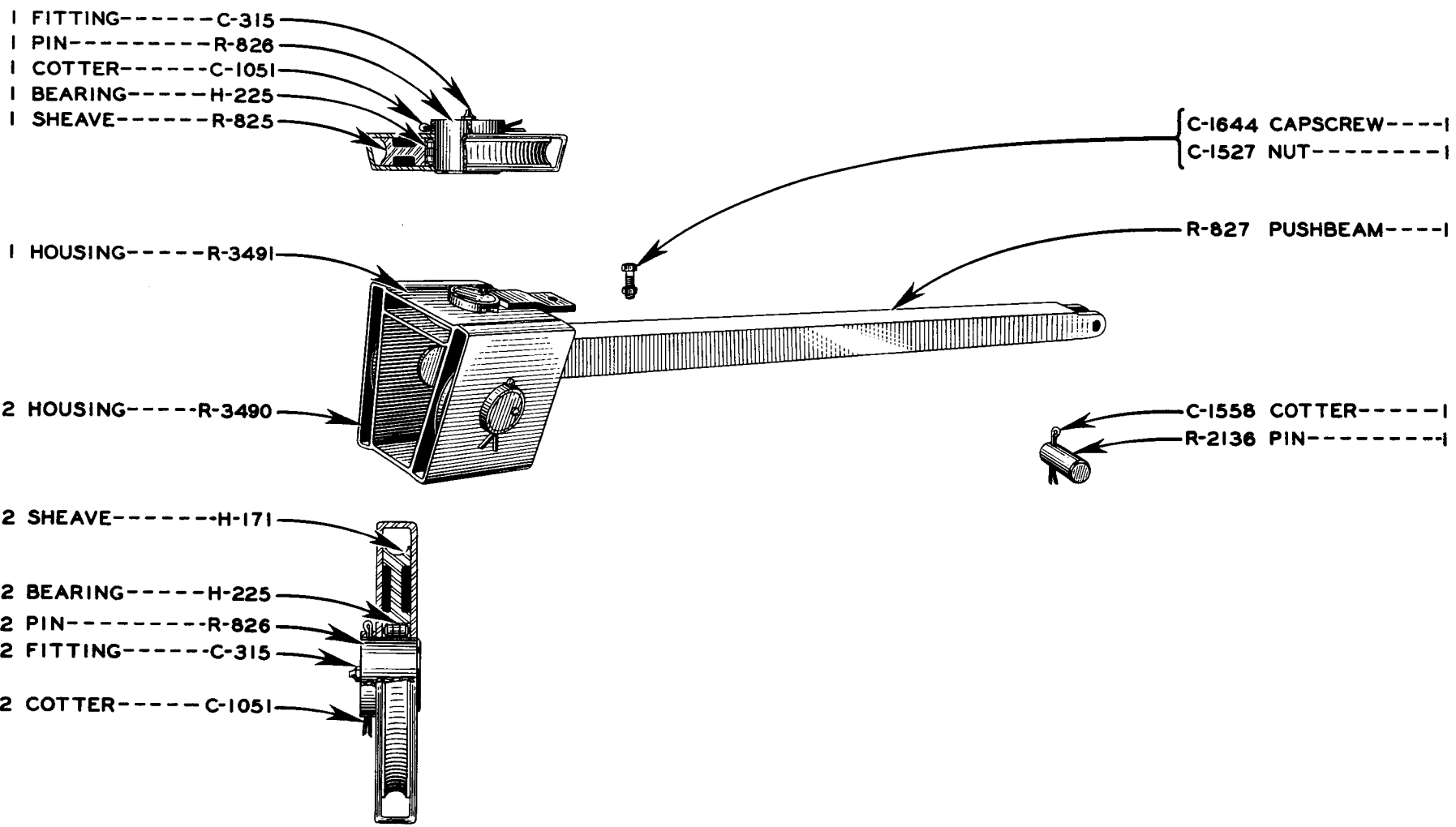
TAILGATE GROUP

- 1 APRON -----R-128
- 1 WEDGE -----H-3443
- 1 HINGE -----H-3442
- 1 PIN ----- F-7261
- 2 COTTER -----C-2508



APRON GROUP

ALWAYS GIVE SERIAL NUMBER WHEN ORDERING PARTS

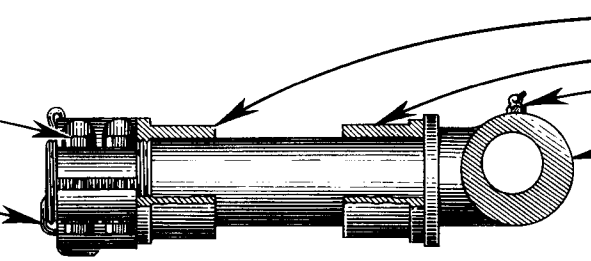


PUSHBEAM GROUP

ALWAYS GIVE SERIAL NUMBER WHEN ORDERING PARTS

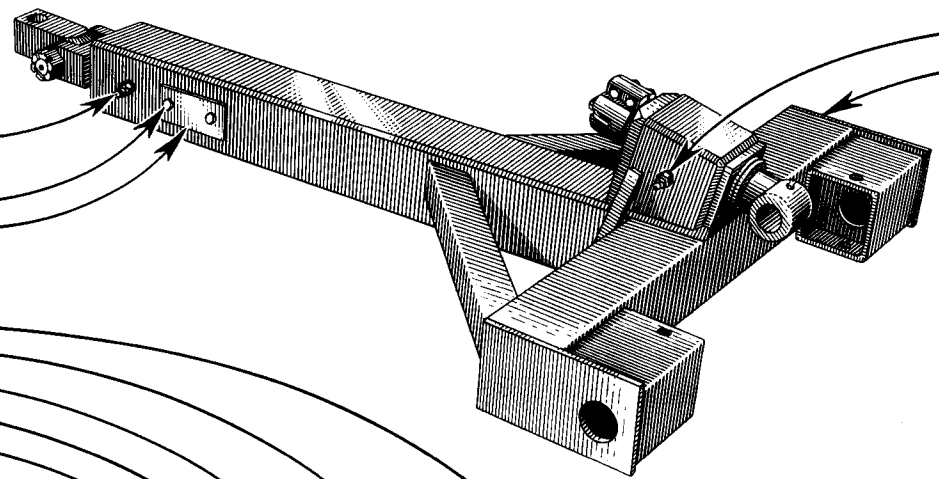
- 1 NUT ASSEM.-- R-3458
- INCLUDES FOLLOWING:
- 1 NUT-----C-59
- 2 BOLT-----E-6616
- 2 NUT-----C-1524
- 1 COTTER C-1561

- E-3355 BUSHING-----1
- C-518 BUSHING-----1
- C-1596 FITTING-----1
- H-7931 FORGING-----1



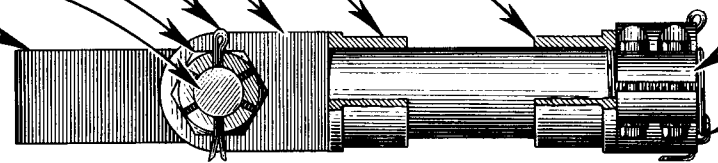
- 1 BUSHING-----SC-325
- 1 FITTING-----C-315
- 1 COVER-----C-5425
- 2 CAPSCREW---C-1600

- SC-325 BUSHING-----1
- C-315 FITTING-----1
- R-1802 FRONT AXLE--1
- R-1803 PIN-----2
- C-1518 COTTER-----4

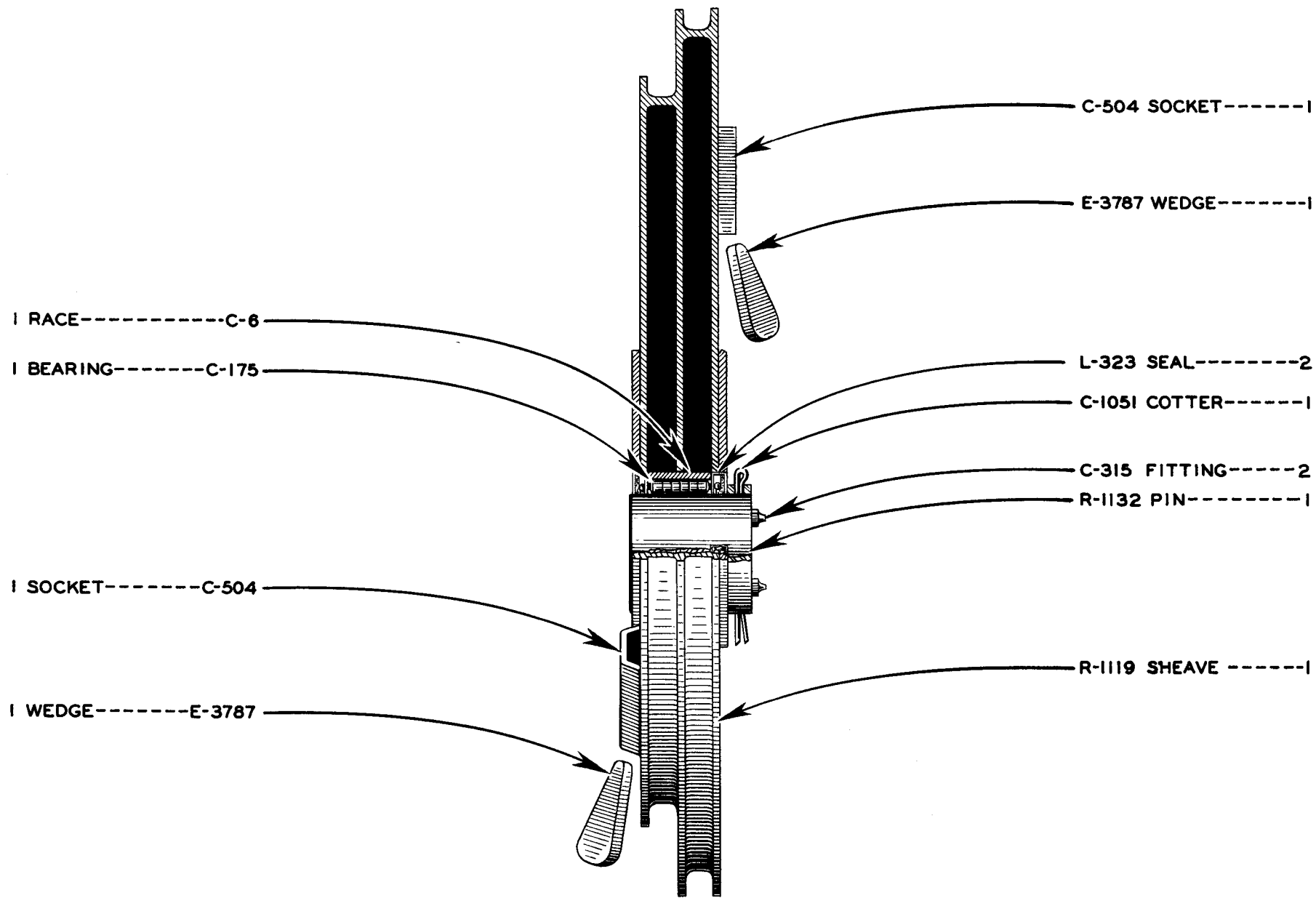


- 1 BUSHING-----E-3355
- 1 BUSHING-----C-518
- 1 FORGING-----D-2695
- 1 COTTER-----C-1949
- 1 NUT-----F-2913
- 1 BOLT-----F-2912
- 1 BLOCK-----F-998
- 1 UNIVERSAL ASSEM. FOR D4-----F-4560

- R-3458 NUT ASSEM.-- 1
- INCLUDES FOLLOWING:
- C-59 NUT-----1
- E-6616 BOLT-----2
- C-1524 NUT-----2
- C-1561 COTTER-----1

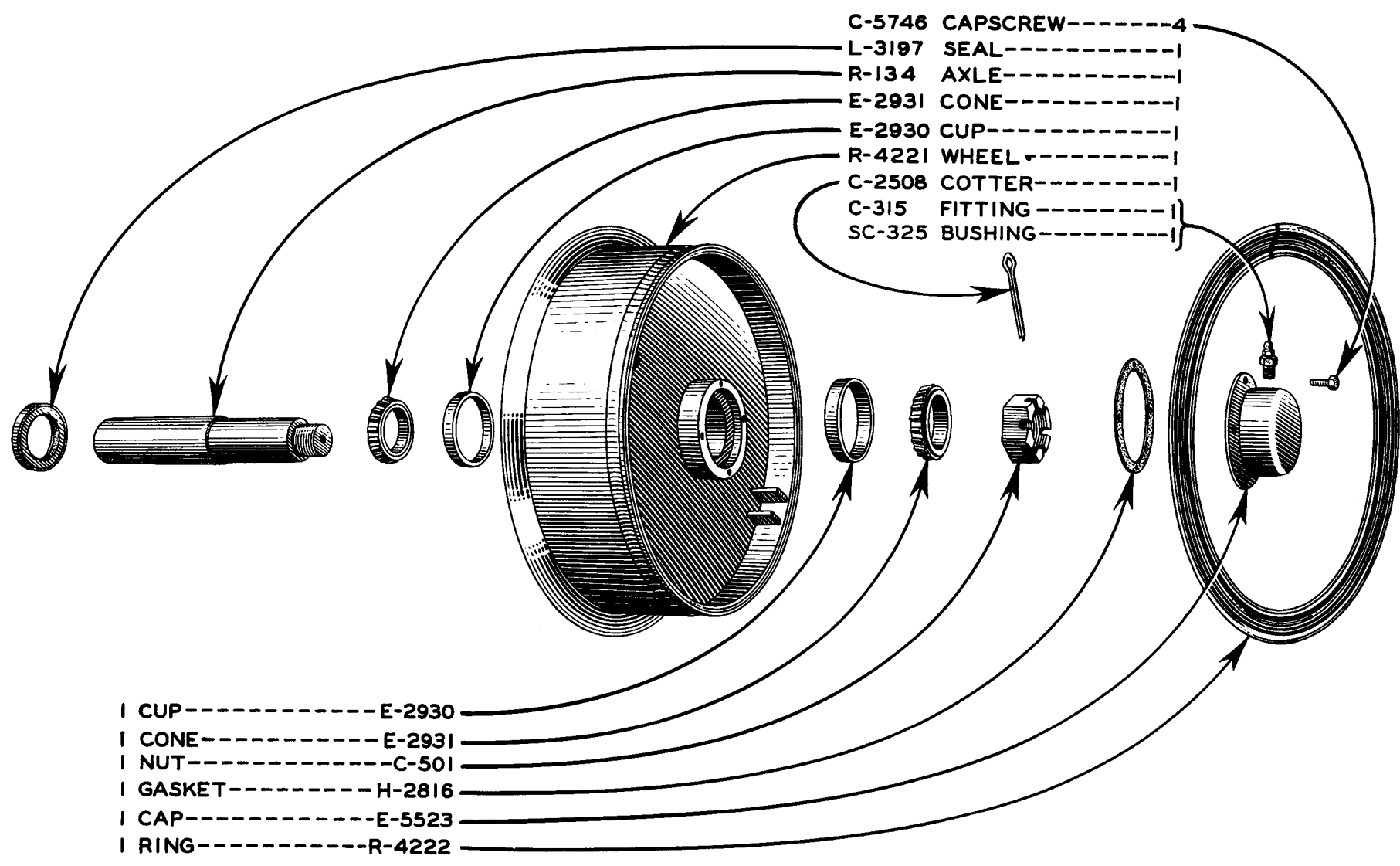


FRONT AXLE GROUP



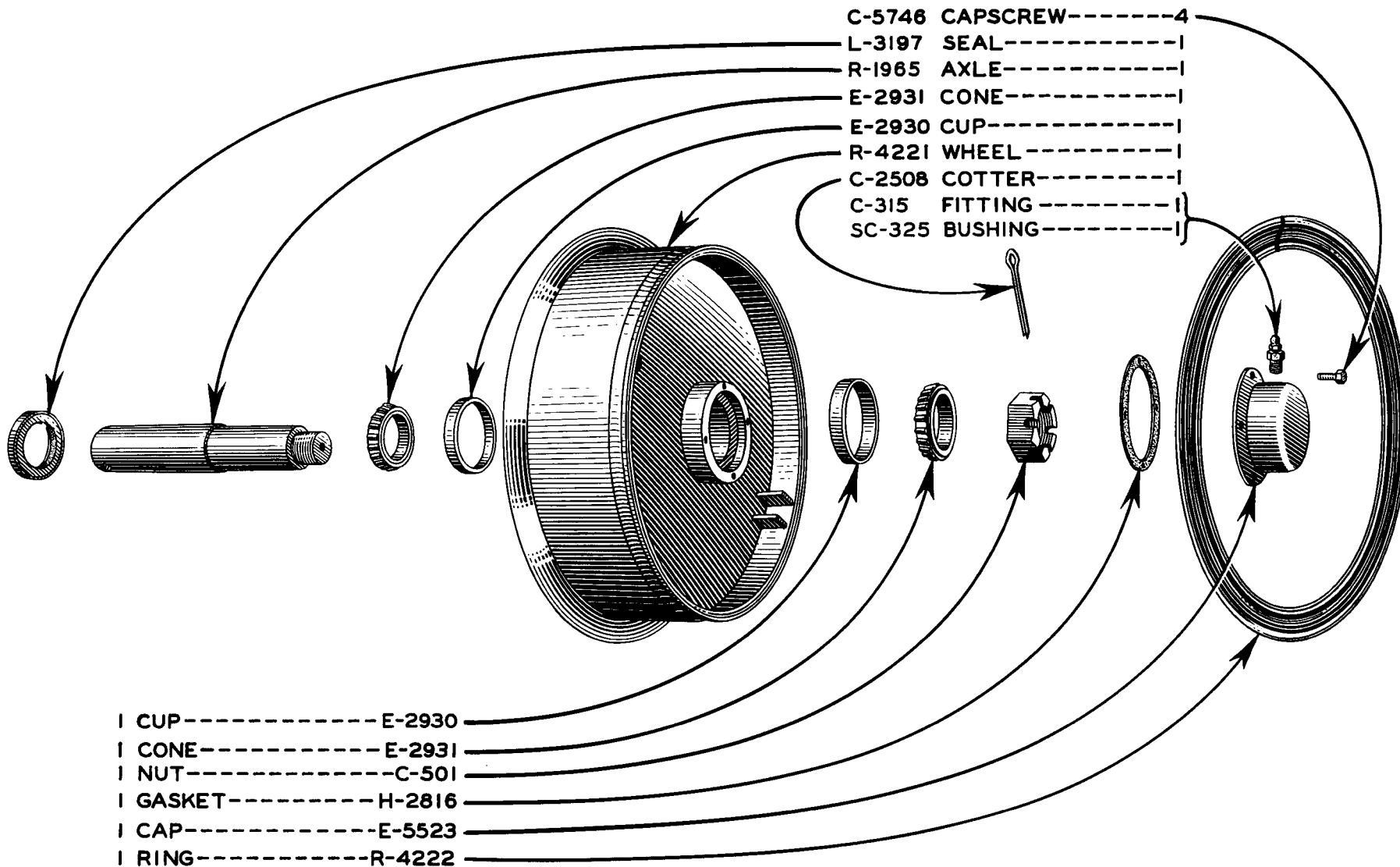
SPIRAL SHEAVE GROUP

ALWAYS GIVE MACHINE NUMBER WHEN ORDERING PARTS



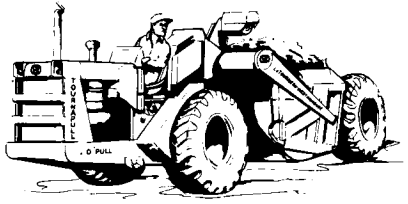
8.25 X 20 SGL. FRONT WHEEL ASSY, R-3832

ALWAYS GIVE SERIAL NUMBER WHEN ORDERING PARTS

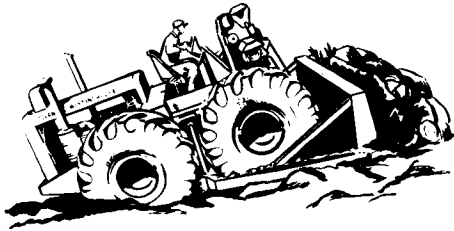


8.25 X 20 SGL. REAR WHEEL ASSY, R-3833

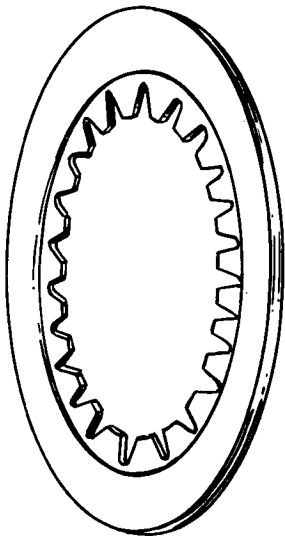
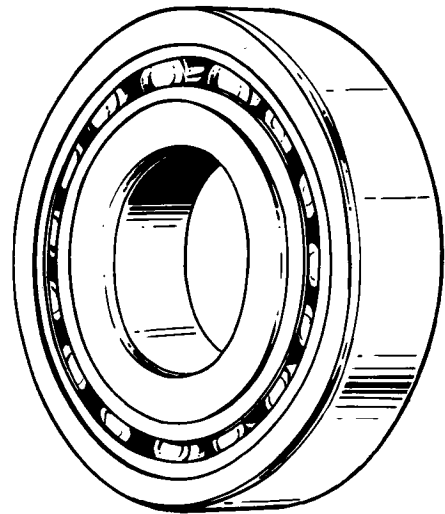
ALWAYS GIVE SERIAL NUMBER WHEN ORDERING PARTS



quality machines



...deserve



...quality parts

see your **LeTOURNEAU-WESTINGHOUSE** *dealer*

LeTOURNEAU-WESTINGHOUSE COMPANY

A subsidiary of Westinghouse Air Brake Company

PEORIA, ILLINOIS, U. S. A.

"Where Quality is a Habit"