

-31-  
**MODEL 2040**  
**HYDRAULIC CONTROL UNIT**

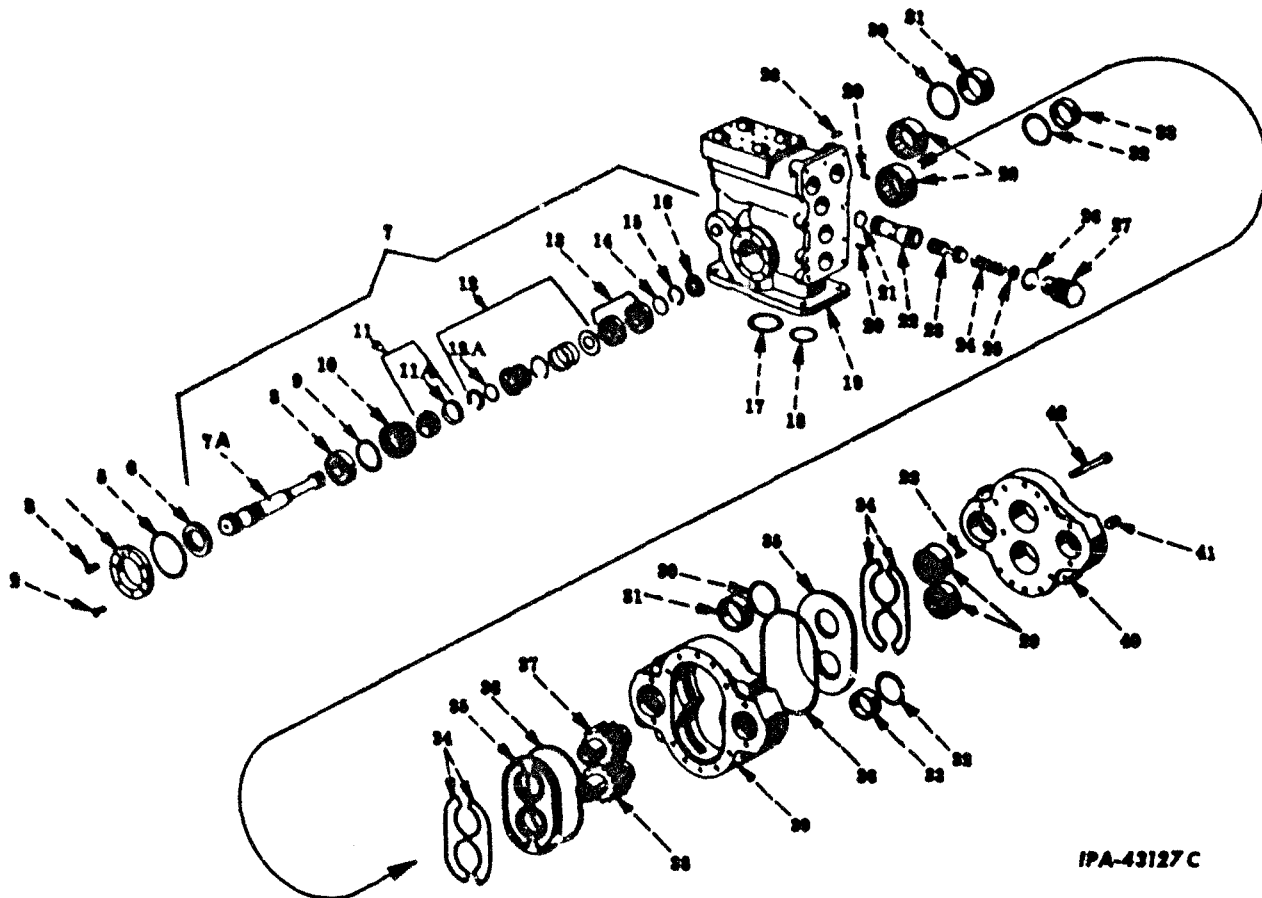
-32-  
**MODEL 2040**  
**HYDRAULIC CONTROL UNIT**

REF. NO.	PART NUMBER	DESCRIPTION
----------	-------------	-------------

REF. NO.	PART NUMBER	DESCRIPTION
----------	-------------	-------------

HYDRAULIC PUMP  
(Hydrec)

HYDRAULIC PUMP  
(Hydrec) - Continued



IPA-43127C

	294 296 R92	PUMP ASSEMBLY, hydraulic (3620A2A2) (order 319 826 R91)	8	297 339 R91	BEARING, drive shaft outer (A333X8)
2	298 178 R1	SCREW, cap, hex-hd. pilot flange (8)	9	252 734 R1	"O" RING, retainer and drive shaft (2-3/4 x 3-1/8 x 3/16")
3	273 326	FITTING, 1/4" lubrication (Alemite 1652B) (optional with 16 982 R1)	10	293 638 R1	RETAINER (758X3)
3	16 982 R1	FITTING, 1/4" lubrication (Lincoln 5013) (optional with 273 326)	11	297 608 R1	SEAT, seal (order 296 944 R91)
4	293 646 R1	FLANGE, pilot (521X41)	11A	297 608 R1	RING, seal (A421X13)
5	293 729 R1	"O" RING, pilot flange (4-3/4 x 5 x 1/8")	12		SEAL (order 296 944 R91)
6	293 645 R91	OIL SEAL, drive shaft (A361X79)	12A	164 513 R1	"O" RING, 1-3/8 x 1-5/8 x 1/8"
7	293 634 R91	RETAINER and SHAFT ASSEMBLY, drive (9X3600X1) (Composed of:	13	293 641 R91	BEARING, drive shaft inner (A754X1) (2)
		1 BEARING 297 339 R91	14	293 642 R1	SHIM (712X126) (X)
		2 BEARING 293 641 R91	15	293 643 R1	RING, snap (812X126)
		1 "O" RING 252 734	16	293 644 R1	WASHER, drive shaft retaining (A506X8)
		1 RETAINER 293 638 R1	17	254 091 R1	"O" RING, low pressure inlet (2-3/4 x 3 x 1/8") (optional with 310 929 R1) (not part of pump assembly)
		1 RING 293 643 R1	17	310 929 R1	"O" RING, low pressure inlet (2-3/4 x 3 x 1/8") (optional with 254 091 R1) (not part of pump assembly)
		1 SEAL	18	259 099 R1	"O" RING, low pressure return (2-1/8 x 2-3/8 x 1/8") (not part of pump assembly)
		1 SEAL	19	293 626 R1	ADAPTER (2X36X1)
		1 SHAFT 293 635 R1	20	19 399 R1	PIN, roll 5/16 x 5/8" (2)
		X SHIM 293 642 R1	21	252 482 R1	"O" RING, relief valve seat (1/8 x 1-1/2 x 1-3/4")
		1 WASHER 293 644 R1	22	293 649 R1	SEAT, relief valve (414X71)
7A	293 635 R1	SHAFT, drive (4X3600X1)			

X - As Required.  
 § - Not Furnished Separately.

## MODEL 2040 HYDRAULIC CONTROL UNIT

REF. NO.	PART NUMBER	DESCRIPTION
<b>HYDRAULIC PUMP</b> (Hydrec) - Continued		
23	293 650 R1	PLUNGER, relief valve (415X49)
24	296 325 R1	SPRING, relief valve plunger (A501X295)
25	293 652 R1	WASHER, relief valve spring (A408X33) (X)
26	290 987 R1	"O" RING, relief valve cap (1-3/4 x 2 x 1/8") (A395X31)
27	296 326 R1	CAP, relief valve (514X440)
28	357 557 R1	PIN, 1/4 x 5/8" roll (A911X1) (2)
29	293 640 R91	BEARING, gear (A340X27) (4)
30	293 726 R1	"O" RING, dowel (2-1/4 x 2-1/2 x 1/8") (A395X39) (2)
31	293 632 R1	DOWEL (13X36X1) (2)
32	259 247 R1	"O" RING, dowel (2-5/8 x 2-7/8 x 1/8") (A395X45) (2)
33	293 633 R1	DOWEL (13X36X2) (2)
34	252 741 R1	"O" RING, cover (5-3/4 x 6 x 1/8") (A791X95) (4)
35	293 631 R1	PLATE, wear (12X36X3) (4)
36	285 453 R1	"O" RING, cover and adapter (6-3/4 x 7 x 1/8") (A395X105) (2)
37	295 576 R1	GEAR, driven (6X3620X2)
38	295 575 R1	GEAR, drive (6X3620X1)
39	294 297 R1	HOUSING (1X3620X2)
40	294 772 R2	COVER (3X36X10)
41	294 773 R1	PLUG, 1/4" hex-soc. pipe (A300X2)
42		SCREW, 1/2NF x 4-3/4" hex-soc-hd. cap (14)
	297 344 R1	KEY, seal seat (829X80)

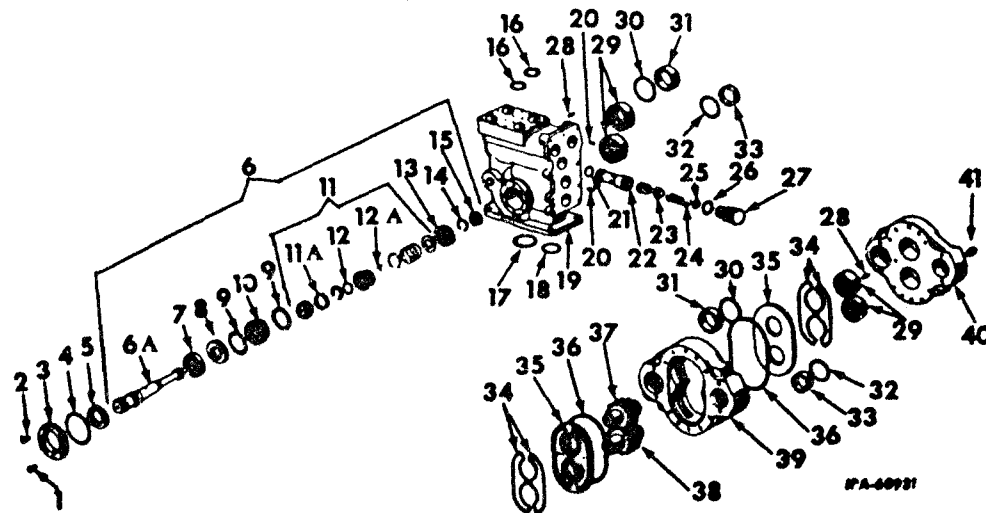
### HYDRAULIC PUMP (Hydrec)

PRINTED IN UNITED STATES OF AMERICA

## MODEL 2040 HYDRAULIC CONTROL UNIT

REF. NO.	PART NUMBER	DESCRIPTION
<b>HYDRAULIC PUMP</b> (Hydrec) - Continued		
309 862 R91		LINK, control (also listed and illustrated with "Controls (Cable and Hydraulic)")
296 944 R91		PACKAGE, field service seal and seat (Consists of - 1 KEY 297 344 R1 1 "O" RING 164 513 R1 1 RING 297 608 R1 § 1 SEAL § 1 SEAT )
311 724 R91		PACKAGE, pump spacer field service (Composed of - 1 DIAGRAM 1ZG-3984 1 LINK 309 862 R91 2 "O" RING 254 091 R1 2 "O" RING 259 099 R1 1 PLATE 311 732 R1)
311 732 R1		PLATE, pump spacer 3/4 x 2" hex-hd. cap SCREW (4)
294 295 R93		UNIT w/VALVE, 294 800 R93, PUMP, 294 296 R92 and FLOW CONTROL, pump and valve (PV4X21) (order 319 720 R91)
309 109 R1		SCREW, 3/4NF x 1-3/8" hex-hd. cap
309 162 R1		SCREW, 3/4NF x 2" hex-hd. cap (3)
294 800 R93		VALVE ASSEMBLY, hydraulic (for components see list of parts under details of "Hydraulic Valve") (VZ14X10)
109 462		FITTING, pump lubrication (Lincoln 5400) (optional with 271 285)
271 285		FITTING, pump lubrication (Alemite 1613-B) (optional with 109 462)
X - As Required § - Not Serviced Separately		

### HYDRAULIC PUMP (Hydrec) - Continued



319 826 R91	PUMP ASSEMBLY, hydraulic (will work for 294 296 R92) (3615A1J1BL)	2	273 349	FITTING, 1/4" lubrication (Alemite 1627B) (optional with 126 132)	
1	298 178 R1	SCREW, pilot flange hex-hd cap (8)	3	293 646 R1	FLANGE, pilot (521X41)
2	126 132	FITTING, 1/4" lubrication (Lincoln 5050) (optional with 273 349)	4	293 729 R1	"O" RING, pilot flange (4-3/4 x 5 x 1/8")
			5	293 645 R91	OIL SEAL, drive shaft (A361X79)

PRINTED IN UNITED STATES OF AMERICA

-34-  
**MODEL 2040**  
**HYDRAULIC CONTROL UNIT**

REF. NO.	PART NUMBER	DESCRIPTION
----------	-------------	-------------

**HYDRAULIC PUMP**  
 (Hydrec) - Continued

6	321 109 R91	RETAINER and SHAFT ASSEMBLY, drive (9X3600X8) (Composed of - 1 BEARING ST 618 1 BEARING 295 799 R91 2 "O" RING 252 734 R1 1 PACKAGE 307 912 R91 1 RETAINER 321 133 R1 X RING 321 134 R1 1 SEAL 321 139 R91 1 SHAFT 321 132 R1 1 WASHER 293 644 R1)
6A	321 132 R1	SHAFT, drive (4X3600X7)
7	ST 618	BEARING, drive shaft outer
8	321 139 R91	OIL SEAL (A907X9)
9	252 734 R1	"O" RING, retainer and drive shaft (2-3/4 x 3-1/8 x 3/16") (optional with 310 940 R1) (2)
9	310 940 R1	"O" RING, retainer and drive shaft (2-3/4 x 3-1/8 x 3/16") (optional with 252 734 R1) (2)
10	321 133 R1	RETAINER (758X8)
11	307 912 R91	PACKAGE, seal and seat field service (SK0342)
11A	297 608 R1	RING, seal
12	293 739 R1	"O" RING (1-3/8 x 1-5/8 x 1/8")
12A	297 344 R1	KEY, seal seat (829X80)
13	295 799 R91	BEARING, drive shaft inner (A754X2)
14	321 134 R1	RING, snap (.128 ± .002 thick) (X)
14	321 135 R1	RING, snap (.136 ± .002 thick) (X)
14	321 136 R1	RING, snap (.144 ± .002 thick) (X)
14	321 137 R1	RING, snap (.152 ± .002 thick) (X)
14	321 138 R1	RING, snap (.160 ± .002 thick) (X)
15	293 644 R1	WASHER, drive shaft retaining (A506X8)
16	252 482 R1	"O" RING, anti-cavitation valve (1-1/2 x 1-3/4 x 1/8") (2)
17	254 091 R1	"O" RING, low pressure inlet (2-3/4 x 3 x 1/8") (optional with 310 929 R1) (not part of pump assembly)
17	310 929 R1	"O" RING, low pressure inlet (2-3/4 x 3 x 1/8") (optional with 254 091 R1) (not part of pump assembly)
18	259 099 R1	"O" RING, low pressure return (2-1/8 x 2-3/8 x 1/8") (not part of pump assembly)
19	321 105 R1	ADAPTER (2X36X10)
20	19 399 R1	PIN, 5/16 x 5/8" roll (2)
21	252 482 R1	"O" RING, relief valve seat (1-1/2 x 1-3/4 x 1/8")
22	293 649 R1	SEAT, relief valve (414X71)
23	293 650 R1	PLUNGER, relief valve (415X49)

PRINTED IN UNITED STATES OF AMERICA

-34-  
**MODEL 2040**  
**HYDRAULIC CONTROL UNIT**

REF. NO.	PART NUMBER	DESCRIPTION
----------	-------------	-------------

**HYDRAULIC PUMP**  
 (Hydrec) - Continued

24	296 325 R1	SPRING, relief valve plunger (A501X295)
25	293 652 R1	WASHER, relief valve spring (A408X33) (8)
26	290 987 R1	"O" RING, relief valve cap (1-3/4 x 2 x 1/8") (optional with 310 939 R1)
26	310 939 R1	"O" RING, relief valve cap (1-3/4 x 2 x 1/8") (optional with 290 987 R1)
27	296 326 R1	CAP, relief valve (514X440)
28	357 557 R1	PIN, 1/4 x 5/8" roll (2)
29	321 131 R91	BEARING, gear (A340X35) (4)
30	293 726 R1	"O" RING, dowel (2-1/4 x 2-1/2 x 1/8") (optional with 310 936 R1) (2)
30	310 936 R1	"O" RING, dowel (2-1/4 x 2-1/2 x 1/8") (optional with 293 726 R1) (2)
31	293 632 R1	DOWEL (13X36X1) (2)
32	259 247 R1	"O" RING, dowel (2-5/8 x 2-7/8 x 1/8") (2)
33	293 633 R1	DOWEL (13X36X2) (2)
34	321 110 R1	"O" RING, cover (5-5/8 x 5-7/8 x 1/8") (4)
35	293 631 R1	PLATE, wear (12X36X3) (2)
36	285 453 R1	"O" RING, cover and adapter (6-3/4 x 7 x 1/8") (2)
37	321 107 R1	GEAR, driven (6X3615X2)
38	321 108 R12	GEAR, drive (6X3615X3)
39	321 104 R1	HOUSING (1X3615X2)
40	321 106 R1	COVER (3X36X8) 1/2NF x 3-3/4" hex-hd cap SCREW (10) 1/2NF x 4-1/4" hex-hd cap SCREW (4)
41	294 773 R1	PLUG, 1/4" hex-soc pipe (A300X2)
	319 720 R91	UNIT ASSEMBLY, pump and valve (PV4X24) (will work for 294 295 R93) (Composed of - 2 CLAMP 279 078 R91 1 HOSE 321 103 R1 2 "O" RING 252 482 R1 1 PUMP 319 826 R91 1 VALVE 319 829 R91 1 VALVE 319 830 R91)
	279 028 R91	CLAMP, hose (2)
	321 103 R1	HOSE, anti-cavitation valve to control valve
	109 462	FITTING, pump lubrication (Lincoln 5400) (optional with 271 285)
	271 285	FITTING, pump lubricating (Alemite 1613-B) (optional with 109 462)
	319 829 R91	VALVE ASSEMBLY, control (for components see list of parts under details of "Control Valve")
	319 830 R91	VALVE ASSEMBLY, anti-cavitation (for components see list of parts under details of "Anti-cavitation Valve")

X - As Required

PRINTED IN UNITED STATES OF AMERICA

-33-  
**MODEL 204C**  
**HYDRAULIC CONTROL UNIT**

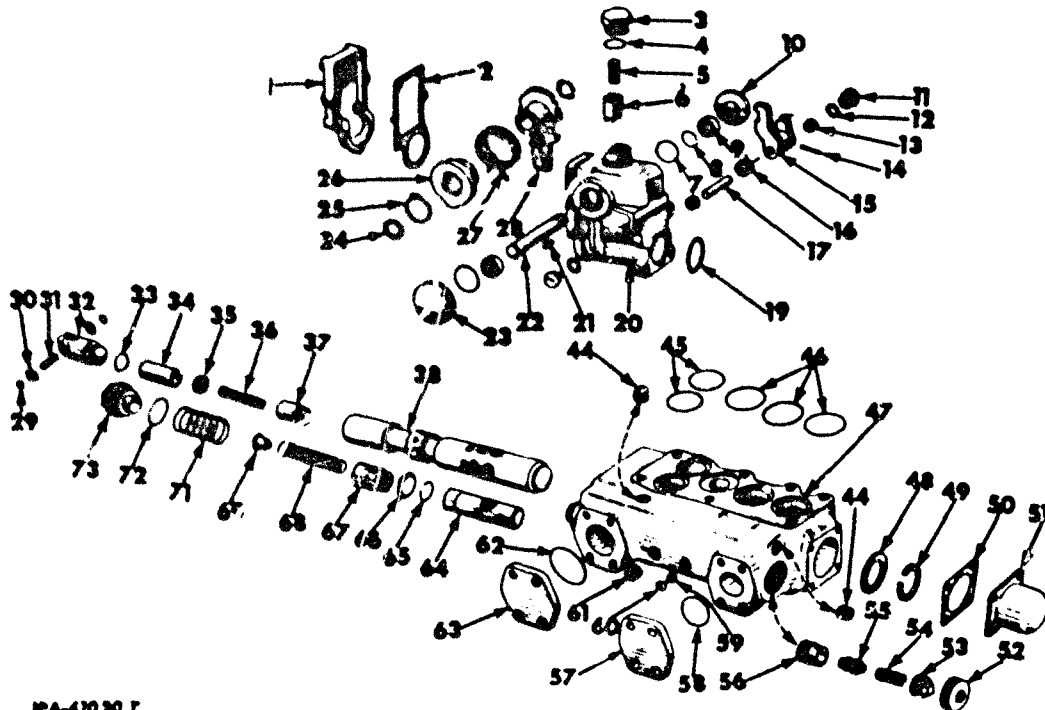
-33-  
**MODEL 204D**  
**HYDRAULIC CONTROL UNIT**

REF. NO.	PART NUMBER	DESCRIPTION
----------	-------------	-------------

REF. NO.	PART NUMBER	DESCRIPTION
----------	-------------	-------------

HYDRAULIC VALVE  
(Hydrex)

HYDRAULIC VALVE  
(Hydrex) - Continued



PA-47030 F

294 800 R93	VALVE ASSEMBLY, hydraulic (order VALVE, 319 829 R91 together with two CLAMP, 279 028 R91, HOSE, 321 103 R1, two "O" RING, 252 482 R1 and VALVE, 319 830 R91)	16	295 783 R2	SPRING, torsion (A806X5)	
2	294 284 R1	COVER, housing (763X3) 5/16 x 1-1/2" hex-hd. cap SCREW (7) 5/16" lock WASHER (7)	17	295 782 R1	SHAFT, latch (M7X42)
2	294 285 R1	GASKET, cover (712X149)	19	254 091 R1	"O" RING, cover (2-3/4 x 3 x 1/8") (A345X47)
3	293 668 R1	CAP, housing end cover (514X353)	20	294 282 R1	HOUSING, plunger lever (762X3)
4	356 005 R1	"O" RING, housing and cover cap (1-1/8 x 1-3/8 x 1/8") (A395X21)	21	114 813	KEY, No. 10 Woodruff (used with control shaft, 293 671 R1) (A258X12) (2)
5	293 658 R1	SPRING, detent (A501X268)	22	293 671 R1	SHAFT, control (M7X38)
6	293 669 R91	DETENT (764X1)	23	293 675 R1	RETAINER, bearing (816X6) 1/4 x 3/4" hex-hd. cap SCREW (2) 1/4" lock WASHER (2)
7	293 739 R1	"O" RING, bearing retainer (1-3/8 x 1-5/8 x 1/8") (A395X25) (2)	24	293 672 R1	WASHER, control shaft thick (A408X35) (2)
8	253 070 R91	"O" RING, control shaft (7/8 x 1-1/8 x 1/8") (A395X17)	24	293 673 R1	WASHER, control shaft thin (A922X1) (X)
9	551 139 R91	BEARING, control shaft (A340X25) (2)	25	300 025 R1	RING, snap (A611X35)
10	293 674 R1	RETAINER, bearing (816X5) 1/4 x 3/4" hex-hd. cap SCREW (2) 1/4" lock WASHER (2)	26	296 949 R91	PLATE, spring (A811X12)
11	293 681 R1	CAP, cam latch shaft (514X354) (2)	27	296 947 R3	SPRING, torsion (A806X8)
12	352 221 R1	"O" RING, cam latch shaft cap (9/16 x 3/4 x 3/32") (A395X11) (2)	28	296 948 R1	PLATE, cam (811X13)
13	293 698 R91	BEARING, cam latch shaft (A340X24) (2)	29	293 662 R1	RING, plunger eye shaft snap (A611X12) (2)
14	17 175 R1	PIN, 3/16 x 1" roll (A770X9)	30		WASHER, 17/32 x 1-1/16" (2)
15	295 780 R1	LATCH, cam (M6X78)	31	293 661 R1	SHAFT, plunger eye (M7X37)
			32	293 660 R1	EYE, plunger (516X83)
			33	252 483 R1	"O" RING, plunger eye (1-1/4 x 1-1/4 x 1/8") (A395X23)
			34	293 657 R1	SPACER, spring guide (416X78)
			35	293 656 R1	GUIDE, spring (416X79)

PRINTED IN UNITED STATES OF AMERICA

PRINTED IN UNITED STATES OF AMERICA



-36-  
MODEL 2040  
HYDRAULIC CONTROL UNIT

REF. NO.	PART NUMBER	DESCRIPTION
----------	-------------	-------------

HYDRAULIC VALVE  
(Hydreco) - Continued

36	293 655 R1	SPRING (A501X101)
37	297 057 R1	VALVE, plunger check (513X38)
38	297 240 R91	PLUNGER, operating (.010" overrise) (512X227KD) (See NOTE)
44	294 286 R1	PLUG, 1/2 x 9/16" pipe (A300X1) (2)
45	290 987 R1	"O" RING (1-3/4 x 2 x 1/8") (A395X31) (2)
46	290 028 R1	"O" RING (2 x 2-1/4 x 1/8") (A395X35) (3)
47		HOUSING (order 294 800 R93)
48	293 663 R1	WASHER, plug retaining (A506X7)
49	293 664 R1	RING, plug snap (812X75)
50	293 684 R1	GASKET, plunger cover (712X127)
51	293 683 R1	COVER, plunger (M10X11) 3/8 x 5/8" hex-hd cap SCREW (4) 3/8" lock WASHER (4)
52	293 696 R1	PLUG, 1-1/2 x 27/32" pipe (A500X8)
53	296 930 R1	PLUG, check valve (560X59)
54	296 929 R1	SPRING, poppet (A501X67)
55	296 928 R1	POPPET, check (747X18)
56	296 927 R1	SEAT, check valve (414X93)
57	293 722 R1	COVER (M17X21) 1/2 x 1-1/4" hex-hd. cap SCREW (4) 1/2" lock WASHER (4)
58	255 088 R1	"O" RING, cover (1-7/8 x 2-1/8 x 1/8") (A395X33)
59	293 687 R1	WASHER, fibre, 5/16"
60		SCREW, mach. rd-hd. 5/16 x 3/8"
61	293 742 R1	PLUG, pipe, 1/2 x 9/16" (A300X4) (3)
62	293 726 R1	"O" RING, cover (2-1/4 x 2-1/2 x 1/8") (A395X39)
63	293 721 R1	COVER (M17X22) 1/2 x 1-1/4" hex-hd. cap SCREW (4) 1/2" lock WASHER (4)
64	293 685 R91	PLUNGER, flow control (755X2)
65	293 688 R1	RING, plunger snap (812X64)



-36-  
MODEL 2040  
HYDRAULIC CONTROL UNIT

REF. NO.	PART NUMBER	DESCRIPTION
----------	-------------	-------------

HYDRAULIC VALVE  
(Hydreco) - Continued

66	293 689 R2	WASHER, plunger spring retainer (416X55)
67	293 691 R1	POT, dash (754X8)
68	293 692 R1	SPRING, dash pot (A501X269)
69	293 693 R1	GUIDE, dash pot spring (416X62)
70	305 866 R1	SCREEN, oil filter (M33X3)
71	293 690 R1	SPRING, plunger (A501X270)
72	290 987 R1	"O" RING, cap (1-3/4 x 2 x 1/8") (A395X31)
73	293 694 R91	CAP (518X3)
	17 008 R1	BALL, steel, 1/4" (A501X7) (order 317 858 R91)
	293 698 R91	BEARING, plunger eye shaft (A340X24) (2)
	355 967 R1	"O" RING, relief valve seat (3/8 x 1/2 x 1/16") (A395X7)
	317 858 R91	PACKAGE, relief valve replacement (consists of "O" RING 355 967 R1, and PLUG) (will work for 17 008 R1, 293 697 R1 and 293 699 R1) (SKO-330 (X))
	294 288 R1	PLUG, pipe, hex-soc., 3/8" (A639X3)
	297 325 R1	SCREW, 1/4 x 1/2" hex-soc. hds. set (A924X3) SCREW, 5/16 x 3/8" hex-soc., cup-pt., set (used in valve housing before reference No. 60) SCREW, 1/2 x 5" hex-soc., cap (used to attach hydraulic valve to unit) (7) SCREW, 3/8 x 7/8" hex-soc., cap (used to attach plunger lever housing to the valve housing) (2) SCREW, 3/8 x 1-1/2" hex-soc., cap (2)
	293 697 R1	SEAT, relief valve (414X55) (order 317 858 R91)
	293 723 R1	SPACER, cylinder part, 1-1/2" ID (830X259) (2)
	293 724 R1	SPACER, cylinder part, 1-3/4" ID (830X260) (2)
	294 299 R1	SPACER, "O" ring (830X258)
	293 699 R1	SPRING, relief valve (A501X7) (order 317 858 R91)

X - As Required.

NOTE - Used only when valve housing can be reworked.

-37-  
**MODEL 2040  
HYDRAULIC CONTROL UNIT**

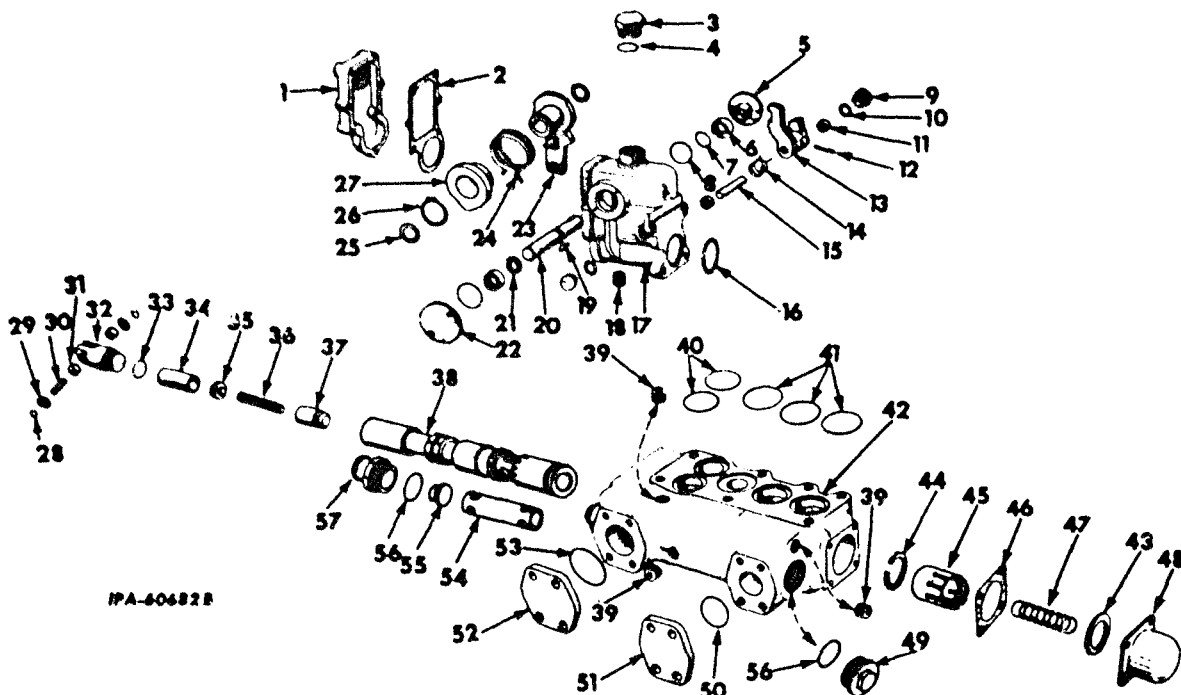
-37-  
**MODEL 2040  
HYDRAULIC CONTROL UNIT**

REF. NO.	PART NUMBER	DESCRIPTION
----------	-------------	-------------

REF. NO.	PART NUMBER	DESCRIPTION
----------	-------------	-------------

HYDRAULIC VALVE  
(Hydrec)

HYDRAULIC VALVE  
(Hydrec) - Continued



IPA-60682B

	319 829 R91	VALVE ASSEMBLY (X214X12) (together with two CLAMP, 279 028 R91, HOSE, 321 103 R1, two "O" RING, 252 482 R1 and VALVE, 319 830 R91 will work for 294 800 R93)		15	295 782 R1	SHAFT, latch (M7X42)
1	294 284 R1	COVER, housing (763X3) 5/16 x 1-1/2" hex-hd cap SCREW (7) 5/16" lock WASHER (7)		16	254 091 R1	"O" RING, cover (2-3/4 x 3 x 1/8") (optional with 310 929 R1)
2	294 285 R1	GASKET, cover (712X149)		16	310 929 R1	"O" RING, cover (2-3/4 x 3 x 1/8") (optional with 254 091 R1)
3	293 668 R1	CAP, housing and cover (514X353)		17	294 282 R1	HOUSING, plunger lever (762X3)
4	356 005 R1	"O" RING, housing and cover cap (1-1/8 x 1-3/8 x 1/8")		18	294 286 R1	PLUG, pipe (A300X1)
5	293 674 R1	RETAINER, bearing (816X5) 1/4 x 3/4" hex-hd cap SCREW (2) 1/4" lock WASHER (2)		19	114 813	KEY, No. 10 Woodruff (2)
6	551 139 R91	BEARING, control shaft (A340X25) (2)		20	321 124 R1	SHAFT, control (M7X44)
7	253 070 R91	"O" RING, control shaft (7/8 x 1-1/8 x 1/8")		21	979 848 R1	RING, snap (A611X23)
8	165 413 R1	"O" RING, bearing retainer (1-3/8 x 1-5/8 x 1/8") (optional with 293 739 R1) (2)		22	293 675 R1	RETAINER, bearing (816X6) 1/4 x 3/4" hex-hd cap SCREW (2) 1/4" lock WASHER (2)
8	293 739 R1	"O" RING, bearing retainer (1-3/8 x 1-5/8 x 1/3") (optional with 165 413 R1) (2)		23	321 130 R1	PLATE, cam (811X26)
9	293 681 R1	CAP, cam latch shaft (514X354) (2)		24	296 947 R3	SPRING, torsion (A806X8)
10	352 221 R1	"O" RING, cam latch shaft cap (9/16 x 3/4 x 3/32") (2)		25	293 672 R1	WASHER, control shaft thick (A408X35) (2)
11	293 698 R91	BEARING, cam latch shaft (A340X24) (2)		25	293 673 R1	WASHER, control shaft thin (A822X1) (X)
12	17 175 R1	PIN, 3/16 x 1" roll		26	300 025 R1	RING, snap (A611X35)
13	295 780 R1	LATCH, cam (M6X78)		27	296 949 R91	PLATE, spring (811X12)
14	295 783 R2	SPRING, torsion (A806X) (6)		28	271 110 R1	RING, plunger eye shaft snap (A611X12) (2)
				29		WASHER, 17/32 x 1-1/16" (2)
				30	293 661 R1	SHAFT, plunger eye (M7X37)
				31	293 698 R91	BEARING, plunger eye shaft (A340X24) (2)

X - As Required.

PRINTED IN UNITED STATES OF AMERICA

PRINTED IN UNITED STATES OF AMERICA

**MODEL 2040  
HYDRAULIC CONTROL UNIT**



REF. NO.	PART NUMBER	DESCRIPTION
----------	-------------	-------------

**HYDRAULIC VALVE  
(Hydrec) - Continued**

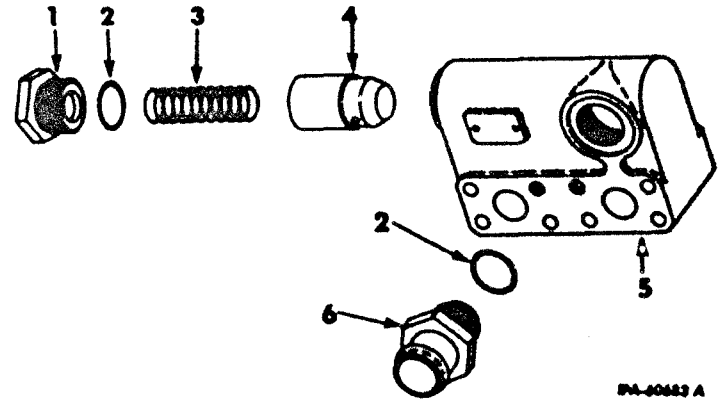
32	293 660 R1	EYE, plunger (516X83)
33	252 483 R1	"O" RING, plunger eye (1-1/4 x 1-1/2 x 1/8")
34	293 657 R1	SPACER, spring guide (416X78)
35	293 656 R1	GUIDE, spring (416X79)
36	293 655 R1	SPRING (A501X101)
37	297 057 R1	VALVE, plunger check (513X38)
38	321 120 R1	PLUNGER, operating (.010" oversize) (512X352D)
39	444 703	PLUG, pipe (3)
40	290 987 R1	"O" RING (1-3/4 x 2 x 1/8") (optional with 310 939 R1) (2)
40	310 939 R1	"O" RING (1-3/4 x 2 x 1/8") (optional with 290 987 R1) (2)
41	290 028 R1	"O" RING (2 x 2-1/4 x 1/8") (3)
42		HOUSING (order 319 829 R91)
43	321 117 R1	SPACER (560X92)
44	321 121 R1	RING, plug snap (890X27)
45	321 118 R1	SLEEVE, (830X399)
46	293 684 R1	GASKET, plunger cover (712X127)
47	321 119 R1	SPRING, plunger (A501X267)
48	293 683 R1	COVER, plunger (M10X11) 3/8 x 5/8" hex-hd cap SCREW (4) 3/8" lock WASHER (4)
49	321 116 R1	CAP (514X620)
50	255 088 R1	"O" RING, cover (1-7/8 x 2-1/8 x 1/8")
51	293 722 R1	COVER (M17X21) 1/2 x 1-1/4" hex-hd cap SCREW (4) 1/2" lock WASHER (4)
52	293 721 R1	COVER (M17X22) 1/2 x 1-1/4" hex-hd cap SCREW (4) 1/2" lock WASHER (4)
53	293 276 R1	"O" RING, cover (2-1/4 x 2-1/2 x 1/8") (optional with 310 936 R1)
53	310 936 R1	"O" RING, cover (2-1/4 x 2-1/2 x 1/8") (optional with 293 276 R1)
54	321 115 R1	SLEEVE (830X400)
55	321 114 R1	PLUG, check valve (560X93)
56	290 987 R1	"O" RING, cap (1-3/4 x 2 x 1/8") (optional with 310 939 R1) (2)
56	310 939 R1	"O" RING, cap (1-3/4 x 2 x 1/8") (optional with 290 987 R1) (2)
57	321 113 R1	ADAPTER, hose (514X628)
		SCREW, 1/2NF x 5-1/2" hex-hd cap (used to attach hydraulic valve to unit) (7)
		SCREW, 3/8 x 7/8" hex-soc, cap (used to attach plunger lever housing to the valve housing) (4)
		SCREW, 3/8 x 1-1/2" hex-soc, cap (2)
	293 723 R1	SPACER, cylinder part, 1-1/2" ID (830X259) (2)
	293 724 R1	SPACER, cylinder part, 1-3/4" ID (830X260) (2)
	294 299 R1	SPACER, "O" ring (830X258)
	321 122 R1	WASHER (411X8) (7)

**MODEL 2040  
HYDRAULIC CONTROL UNIT**



REF. NO.	PART NUMBER	DESCRIPTION
----------	-------------	-------------

**ANTI-CAVITATION VALVE  
(Hydrec)**



	319 830 R1	VALVE ASSEMBLY, anti-cavitation (VC5X1)
1	321 143 R1	CAP, check valve plunger (514X629)
2	290 987 R1	"O" RING (1-3/4 x 2 x 1/8") (optional with 310 939 R1) (2)
2	310 939 R1	"O" RING (1-3/4 x 2 x 1/8") (optional with 290 987 R1) (2)
3	321 142 R1	SPRING, check valve plunger (A501X332)
4	321 141 R1	PLUNGER, check valve (513X56)
5	321 140 R1	HOUSING, valve (451X11)
6	321 113 R1	ADAPTER, hose (514X628)

PA-20482 A

-39-  
**MODEL 2040**  
**HYDRAULIC CONTROL UNIT**

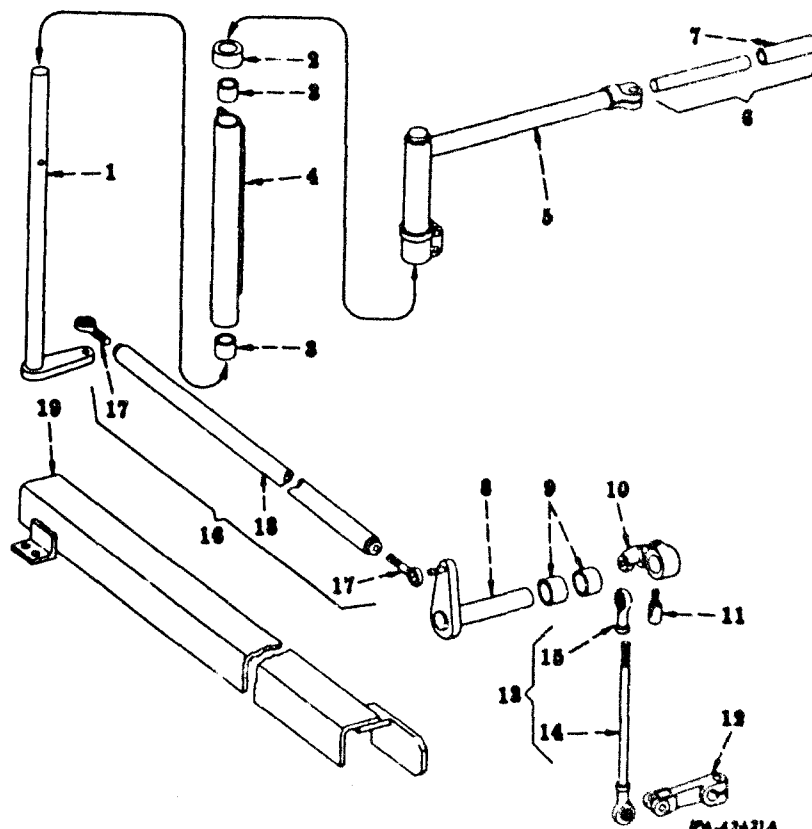
-39-  
**MODEL 2040**  
**HYDRAULIC CONTROL UNIT**

REF. NO.	PART NUMBER	DESCRIPTION
----------	-------------	-------------

REF. NO.	PART NUMBER	DESCRIPTION
----------	-------------	-------------

**HYDRAULIC CONTROLS**  
 (Hydraulic Only) (For tractors using Radiator Guards, 295 174 R93 or 304 258 R91)

**HYDRAULIC CONTROLS**  
 (Hydraulic only) (For tractors using Radiator Guards, 295 174 R93 or 304 258 R91) - Continued



1	295 528 R11	SHAFT, rear control	13	289 827 R91	LINK, 289 828 R11, w/BEARING, 297 218 R91 and NUT, 287 072 R1, control
2	293 801 R1	COLLAR, rear control shaft 5/16" NUT 5/16 x 2-1/2" hex-hd cap SCREW 5/16" lock WASHER	14	289 828 R11	LINK, control
3	305 874 R1	BUSHING, rear control shaft bracket (2)	15	297 218 R91	BEARING, control link rod end
4	295 525 R92	BRACKET w/two BUSHING, 273 278 R91, rear control shaft 3/8" NUT (4) 3/8 x 3/4" hex-hd cap SCREW (4) 3/8" lock WASHER (4)	16	295 530 R91	ROD, 295 531 R11, w/two BEARING, 283 442 R91 and two NUT, 287 072 R1, side reach
5	293 803 R92	HANDLE, control 1/2 x 1-1/2" hex-hd. cap SCREW (2) 1/2 x 1-1/4" hex-hd. cap SCREW 1/2" lock WASHER (3)	17	283 442 R91	NUT 1/2NF slit-box. NUT 3/32 x 1-1/8" cotter PIN 1/2NF x 1-3/4" hex-hd. cap SCREW 1/2" lock WASHER
6	293 808 R91	SHAFT w/GRIP, 41 597 DA, control handle adjustable hand	18	295 531 R11	ROD, side reach
7	41 597 DA	GRIP, control handle hand	19	295 544 R12	GUARD, reach rod
8	289 240 R11	SHAFT, front control		287 074 R1	NUT (2) 1/2 x 1-1/2" hex-hd. cap SCREW (2) 1/2" lock WASHER (2)
9	305 874 R1	BUSHING, front control shaft (2)	102 467 H		FITTING, bearing lubrication (Lincoln 5042) (optional with 110 146 R91) (4)
10	295 534 R1	LEVER, inner front control	110 146 R91		FITTING, bearing lubrication (Alemite 1792BL) (optional with 102 467 H) (4)
	295 535 R1	BOLT, control lever locking	109 461		FITTING, bracket lubrication (Lincoln 5000) (optional with 138 322 H)
	551 172 R1	NUT, lock	138 322 H		FITTING, bracket lubrication (Alemite 1610BL) (optional with 109 461)
	295 535 R1	Follows Reference No. 10			
11	295 535 R1	Follows Reference No. 10			
12	295 543 R1	LEVER, valve control			
	551 193 R1	NUT, lock 3/8 x 1-7/8" hex-hd. cap SCREW			

PRINTED IN UNITED STATES OF AMERICA

PRINTED IN UNITED STATES OF AMERICA

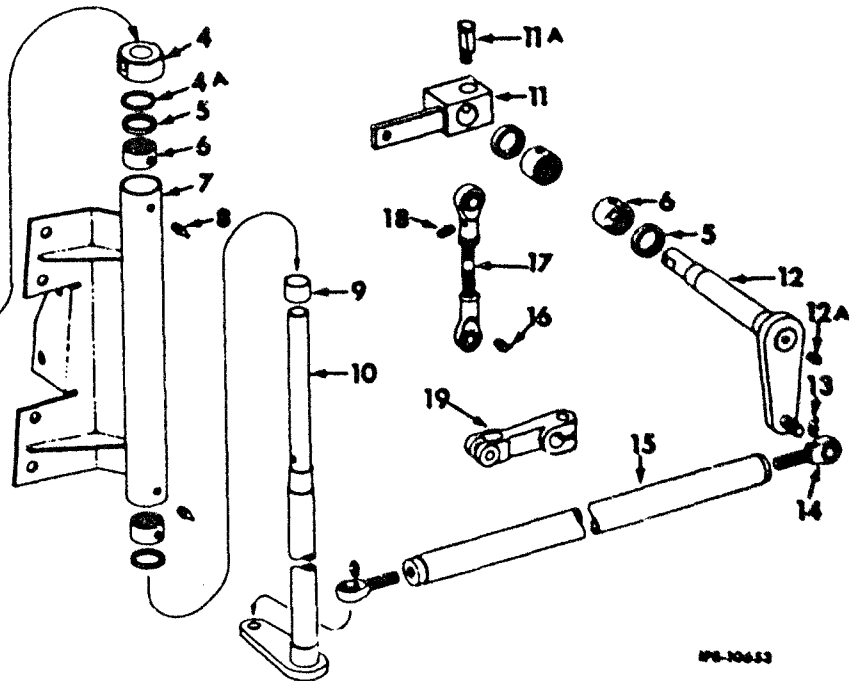
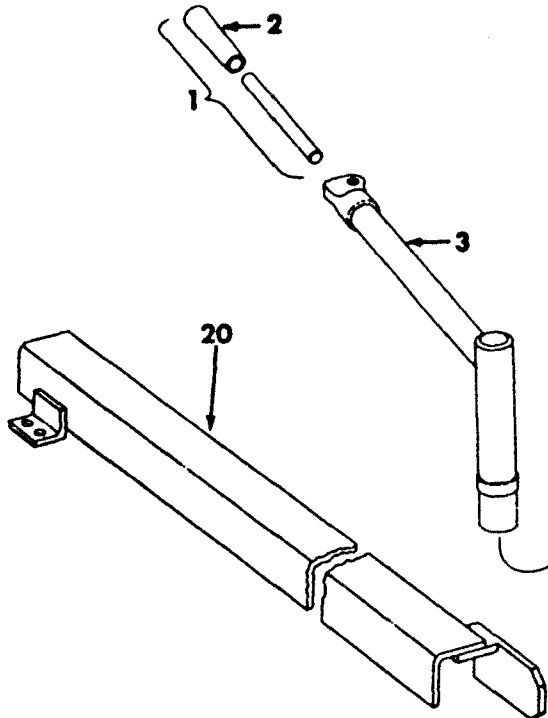




# MODEL 2040 HYDRAULIC CONTROL UNIT

REF. NO.	PART NUMBER	DESCRIPTION
----------	-------------	-------------

HYDRAULIC CONTROLS  
(For tractors using Radiator Guard, 309 347 R91)



98-10653

1	293 808 R91	GRIP, 41 597 DA, hand control adjustable	8	102 467 H	FITTING, control shaft bracket lubrication (Lincoln 5042) (optional with 110 146 R91) (2)
2	41 597 DA	GRIP, hand	8	110 146 R91	FITTING, control shaft bracket lubrication (Alemite 1792-B) (optional with 102 467 H) (2)
3	284 033 R91	HANDLE, control 1/2 x 1-1/4" hex-hd cap SCREW 1/2 x 1-1/2" hex-hd cap SCREW (2) 1/2" lock WASHER (3)	9	284 030 R1	RACE, rear control shaft inner
4	284 032 R1	COLLAR, rear control shaft 5/16" NUT 5/16 x 2-1/2" hex-hd cap SCREW 5/16" lock WASHER	10	284 029 R11	SHAFT w/RACE, 284 030 R1, rear control
4A	615 227 R1	WASHER, 1-3/4 x 1-1/32 x 11 ga flat	11	309 859 R91	LEVER, front control inner
5	287 058 R91	OIL SEAL, front and rear control shaft (4)	11A	295 535 R1	BOLT, control lever locking 5/16" stover lock NUT
6	298 175 R91	BEARING, front and rear control shaft-needle (4)	12	309 858 R11	SHAFT, front control
7	284 026 R91	BRACKET w/two BEARING, 298 175 R91 and two OIL SEAL, 287 058 R91, rear control shaft 3/8" NUT (6) 3/8 x 3/4" hex-hd cap SCREW (5) 3/8 x 7/8" hex-hd cap SCREW 3/8" heavy lock WASHER (6)	12A	109 461	FITTING, front control shaft lubrication (Lincoln 5000) (optional with 138 322 H)
			12A	138 322 H	FITTING, front control shaft lubrication (Alemite 1610BL) (optional with 109 461)
			13	16 964 R91	FITTING, side reach rod lubrication (Lincoln 5410) (optional with 274 510) (2)
			13	274 510	FITTING, side reach rod lubrication (Alemite 1911B) (optional with 16 964 R91) (2)

-41-  
**MODEL 2040**  
**HYDRAULIC CONTROL UNIT**

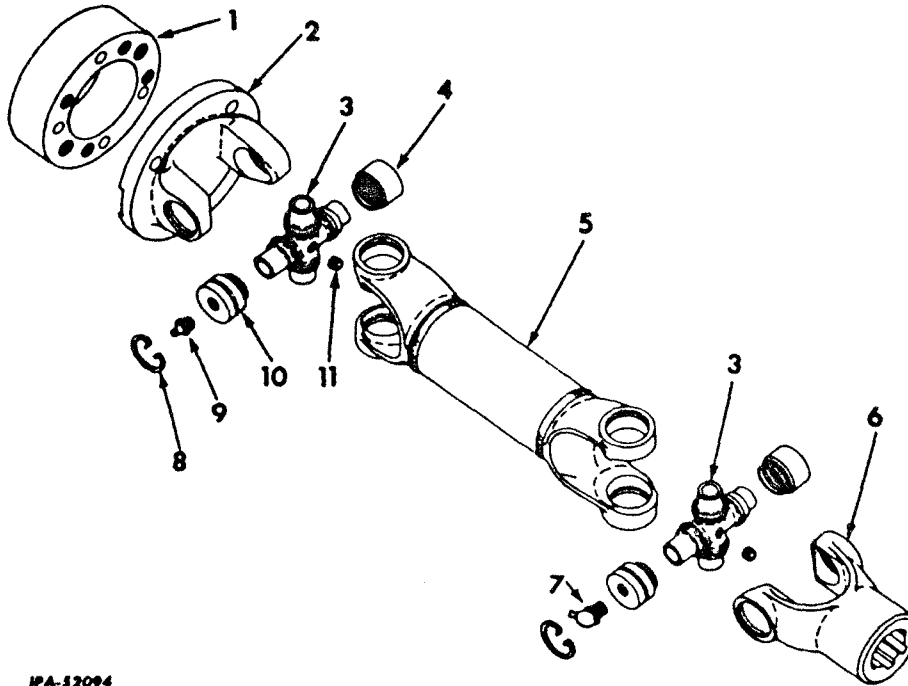
-41-  
**MODEL 2040**  
**HYDRAULIC CONTROL UNIT**

REF. NO.	PART NUMBER	DESCRIPTION
<b>HYDRAULIC CONTROLS</b> (For tractor using Radiator Guard, 309 347 R91) - Continued		
14	283 442 R91	BEARING, side reach rod end (2) 1/2NF heavy NUT (2)
15	295 530 R91	ROD, 295 531 R11, w/two BEARING, 283 442 R91, side reach 1/2NF slit NUT 1/2NF jam NUT 1/2NF x 1-3/4" hex-hd cap SCREW 3/32 x 1-1/2" cotter PIN
15	295 531 R11	ROD, reach
16	102 467 H	FITTING, rod end lubrication (Lincoln 5042) (optional with 110 146 R91)
16	110 146 R91	FITTING, rod end lubrication (Alemite 1792BL) (optional with 102 467 H)

REF. NO.	PART NUMBER	DESCRIPTION
<b>HYDRAULIC CONTROLS</b> (For tractors using Radiator Guard, 309 347 R91) - Continued		
17	309 862 R91	LINK, control 1/2" stover lock NUT 1/2NF NUT 1/2NF x 1-1/2" hex-hd cap SCREW 1/2 x 2" hex-hd cap SCREW
18	117 175	FITTING, rod end lubrication (optional with 271 289)
18	271 289	FITTING, rod end lubrication (optional with 117 175)
19	295 543 R1 9 413 937	LEVER, valve control NUT, 3/8" stover lock 3/8 x 1-7/8" hex-hd cap SCREW
20	295 544 R12 287 074 R1	GUARD, reach rod NUT, 1/2" heavy (2) 1/2 x 1-1/2" hex-hd cap SCREW (2) 1/2" heavy lock WASHER (2)

**POWER TAKE-OFF SHAFT**  
(Blood Bros.)

**POWER TAKE-OFF SHAFT**  
(Blood Bros.) - Continued



IPA-32094

1	283 434 R2	ADAPTER, front power take-off coupling (order 315 540 R1) 3/8 x 1-3/8" hex-hd cap SCREW (6) 3/8" lock WASHER (6)
2	283 455 R1	FLANGE, yoke (3NF-34)
3	307 949 R91	SPIDER ASSEMBLY (CP35N-8) (2) (Composed of - 1 SPIDER 3 CUP 661 671 R91 1 CUP 283 461 R91 1 PLUG 103 833 4 RING 495 962 R1)
4	661 671 R91	CUP, needle (34N4-2A) (6)
5	283 457 R1	CENTER, double (3N172-1)
6	283 456 R1	YOKE, plain (3NYS28-13)
7	271 283	FITTING, 1/8" lubrication (Alemite 1688B) (optional with 126 152)
7	126 152	FITTING, 1/8" lubrication (Lincoln 5200) (optional with 271 283)

8	495 962 R1	RING, lock (3N20) (8)
9	138 322 H	FITTING, 1/8" lubrication (Alemite 1610BL) (optional with 109 461)
9	109 461	FITTING, 1/8" lubrication (Lincoln 3N172-1) (optional with 138 322 H)
10	283 461 R91	CUP, needle (35N4-3A) (2)
11	103 883	PLUG, spider (20803) (2)
	283 445 R91	SHAFT, power take-off (CP35N-8) (order 317 617 R91) (Composed of - 1 FITTING 271 283 1 FITTING 138 322 H 1 FLANGE 283 455 R1 1 CENTER 283 457 R1 2 SPIDER 307 949 R91 1 YOKE 283 456 R1)

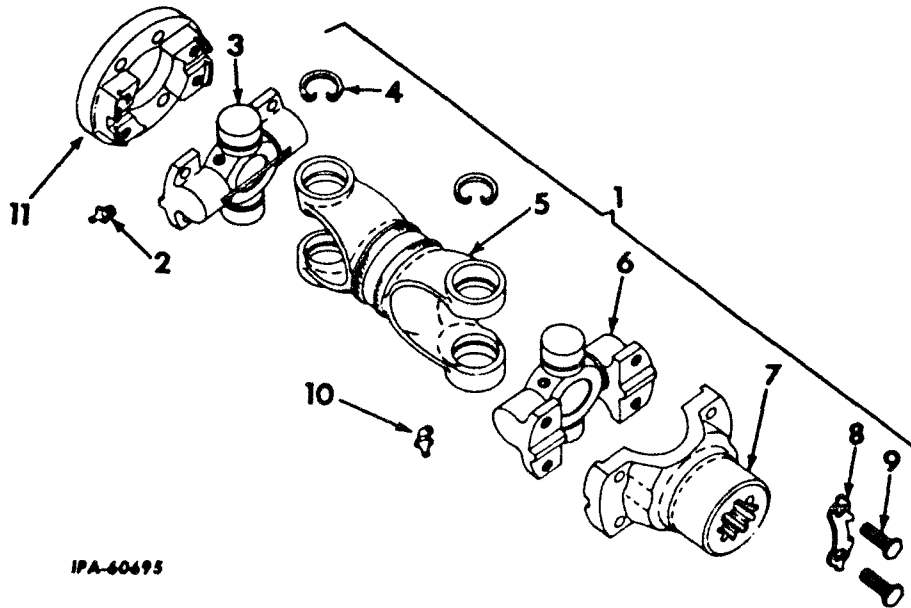
}-Not Furnished Separately



-42-  
**MODEL 2040**  
**HYDRAULIC CONTROL UNIT**

REF. NO.	PART NUMBER	DESCRIPTION
----------	-------------	-------------

**POWER TAKE-OFF SHAFT**  
 (Mechanics)



IPA-60695

REF. NO.	PART NUMBER	DESCRIPTION
1	317 617 R91	SHAFT w/universal JOINT ASSEMBLY, power take-off (will work for 283 445 R91) (Composed of -
	4	BOLT 37 479 HA
	1	FITTING 117 175
	1	FITTING 110 146 R91
	2	PLATE 37 337 H
	8	RETAINER 305 109 R91
	4	RING 97 710 H
	8	SHIELD 37 335 H
	1	SPIDER 317 721 R91
	1	SPIDER 317 722 R91
	1	TUBE 317 718 R91
	1	YOKE 317 708 R1
181 377		SCREW, cap, hex-hd, 3/8NF x 1-3/4" (4)
103 321		WASHER, lock, 3/8" (4)
2	110 146 R91	FITTING, lubrication (optional with 102 467 H)
2	102 467 H	FITTING, lubrication (optional with 110 146 R91)
3	317 721 R91	SPIDER w/BEARINGS (114-5131-A)



-42-  
**MODEL 2040**  
**HYDRAULIC CONTROL UNIT**

REF. NO.	PART NUMBER	DESCRIPTION
----------	-------------	-------------

**POWER TAKE-OFF SHAFT**  
 (Mechanics) - Continued

4	97 710 H	RING, snap (5785J) (4)
5	317 718 R91	TUBE (42-15568-2)
6	317 722 R91	SPIDER w/BEARINGS (114-5132-A)
7	317 708 R1	YOKE, fitting (16781J)
8	37 337 H	PLATE, lock (3550J) (2)
9	37 479 HA	BOLT, 3/8NF x 27/32" (3544J) (4)
10	117 175	FITTING, lubrication (optional with 274 508)
10	274 508	FITTING, lubrication (optional with 117 175)
11	315 540 R1	ADAPTER, front power take-off coupling
	179 843	SCREW, cap, hex-hd, 3/8NC x 1-1/2" (6)
	103 321	WASHER, lock, 3/8" (6)
	305 109 R91	RETAINER and SEAL (12408J) (8)
	37 335 H	SHIELD, dust (8)