

REFER TO ALPHABETICAL INDEX  
FOR COMPLETE LISTING OF PARTS

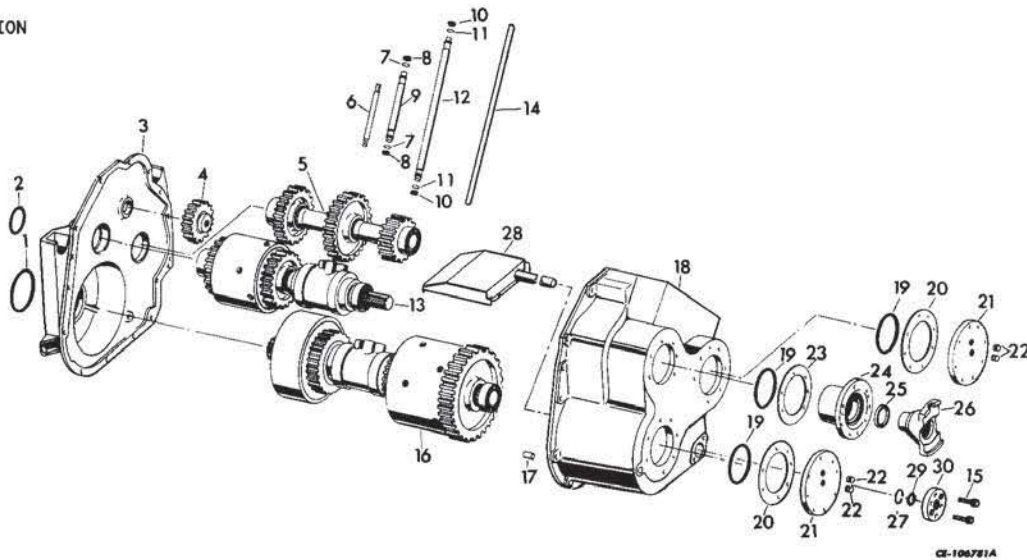
DRIVE TRAIN

7

## DRIVE TRAIN

REF. NO.	PART NUMBER	DESCRIPTION	FRANÇAIS	ESPAÑOL	DEUTSCH
----------	-------------	-------------	----------	---------	---------

**TRANSMISSION**



GE-100771A

	635 580 C91	TRANSMISSION ASSY.	TRANSMISSION	TRANSMISSION	TRIEBWERK
	25 517 R1	SCREW, 2" LONG HEX-HD CAP (2)	VIS	TORNILLO	SCHRAUBE
	25 998 R1	SCREW, 5-1/2" LONG HEX-HD CAP (ALSO LISTED WITH "CLUTCH BRAKE STEERING DRIVE") (2)	VIS	TORNILLO	SCHRAUBE
	25 540 R1	WASHER (ALSO LISTED WITH "CLUTCH BRAKE STEERING DRIVE") (4) (CONSISTS OF THE FOLLOWING PARTS EXCEPT REF. 1 AND 2)	RONDELLE	ARANDELA	UNTERLEGSCHIEBE
1	22 299 R1	RING, LOWER TRANSMISSION SEALING (NOT PART OF TRANSMISSION ASSY.)	BAGUE	ANILLO	RING
2	3 047 879 R1	RING, UPPER TRANSMISSION SEALING (NOT PART OF TRANSMISSION ASSY.)	BAGUE	ANILLO	RING
3	654 680 C1	COVER (ORDER COVER, 709 508 C1, HUB, 716 758 C1 AND RING, 716 758 C1) (SEE NOTE) POWERSHIFT *955 AND BELOW	COUVERCLE	CUBIERTA	DECKEL
3	709 508 C1	COVER POWERSHIFT *956 AND UP ALSO CUSTOM APPLICATION	COUVERCLE	CUBIERTA	DECKEL
	24 863 R1	BOLT (15)	BOULON	PERNO	SCHRAUBE
	25 536 R1	WASHER (15)	RONDELLE	ARANDELA	UNTERLEGSCHIEBE
4		SHAFT, REVERSE IDLER (REFER TO "TRANSMISSION REVERSE IDLER SHAFT")	ARBRE	EJE	WELLE
5		SHAFT ASSY., COUNTER (REFER TO "TRANSMISSION COUNTER SHAFT")	ARBRE	EJE	WELLE
6	659 571 C1	STUD, FORWARD-REVERSE MANIFOLD	ERGOT	ESPARRAGO	STIFTSCHRAUBE
7	371 544 R1	RING, MANIFOLD TUBE SEALING BACK-UP (6)	BAGUE	ANILLO	RING
8	659 835 C1	RING, MANIFOLD TUBE SEALING (6)	BAGUE	ANILLO	RING
9	654 685 C1	TUBE, FORWARD-REVERSE MANIFOLD (3)	TUBE	TUBO	ROHR
10	659 835 C1	RING, MANIFOLD TUBE SEALING (8)	BAGUE	ANILLO	RING
11	371 544 R1	RING, MANIFOLD TUBE SEALING BACK-UP (8)	BAGUE	ANILLO	RING
12	654 686 C1	TUBE, SPEED RANGE MANIFOLD (4)	TUBE	TUBO	ROHR
13		SHAFT ASSY., INPUT (REFER TO "TRANSMISSION INPUT SHAFT")	ARBRE	EJE	WELLE

\* - TRANSMISSION SERIAL NUMBER

NOTE: REWORK SHAFT ASSY., 659 590 C91 BY REPLACING HUB, 695 601 C1 OR 659 601 C2 WITH HUB, 716 758 C1 AND RING 716 757 C1.

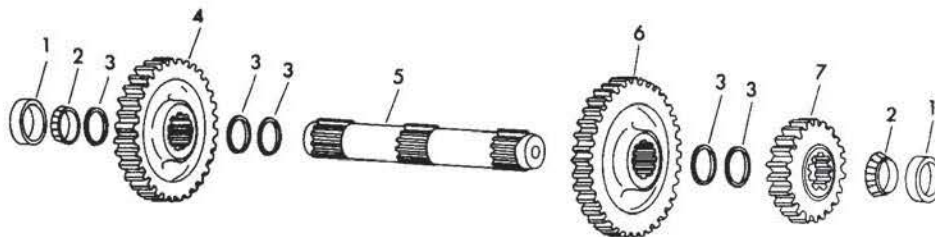
## DRIVE TRAIN

REF. NO.	PART NUMBER	DESCRIPTION	FRANÇAIS	ESPAÑOL	DEUTSCH
TRANSMISSION - CONTINUED					
14	709 586 C1	TUBE, MANIFOLD SUPPORT	TUBE	TUBO	ROHR
15	27 002 R1	SCREW, FLANGED, 12 POINT (2)	VIS	TORNILLO	SCHRAUBE
16		SHAFT ASSY., OUTPUT (REFER TO "TRANSMISSION OUTPUT SHAFT")	ARBRE	EJE	WELLE
17	125 860	PIN, DOWEL (2)	CHEVILLE	PASADOR	STIFT
18	654 678 C91	HOUSING W/TWO PIN, 125 860	BOITIER	CAJA	GEHAEUSE
19	22 413 R1	RING, COVER SEALING (3)	BAGUE	ANILLO	RING
20	659 630 C1	SHIM, COVER (.005) - AS REQUIRED	CALE	LAMINA DE AJUSTE	AUSGLEICHSCHLEIBE
20	659 719 C1	SHIM, COVER (.007) - AS REQUIRED	CALE	LAMINA DE AJUSTE	AUSGLEICHSCHLEIBE
20	659 629 C1	SHIM, COVER (.020) - AS REQUIRED	CALE	LAMINA DE AJUSTE	AUSGLEICHSCHLEIBE
21	654 303 C1 140 483 H 25 534 R1	COVER (2) SCREW, HEX-HD CAP (14) WASHER (14)	COUVERCLE VIS RONDELLE	CUBIERTA TORNILLO ARANDELA	DECKEL SCHRAUBE UNTERLEGSCHLEIBE
22	444 697	PLUG, PIPE (4)	BOUCHON	TAPON	STOPFEN
23	659 567 C1	SHIM, COVER (.005) (X)	CALE	LAMINA DE AJUSTE	AUSGLEICHSCHLEIBE
23	659 733 C1	SHIM, COVER (.007) (X)	CALE	LAMINA DE AJUSTE	AUSGLEICHSCHLEIBE
23	659 566 C1	SHIM, COVER (.020) (X)	CALE	LAMINA DE AJUSTE	AUSGLEICHSCHLEIBE
24	654 681 C1 140 483 H 25 534 R1	COVER, INPUT SHAFT SCREW, HEX-HD CAP (7) WASHER (7)	COUVERCLE VIS RONDELLE	CUBIERTA TORNILLO ARANDELA	DECKEL SCHRAUBE UNTERLEGSCHLEIBE
25	619 586 C91	SEAL, INPUT SHAFT OIL	JOINT D'ETANCHEITE	SELLO	DICHTUNG
26	658 403 C1	YOKE, DRIVE	JOUG	YUGO	GABELKOPF
27	21 924 R1	RING, SUMP PIPE SEALING - FLANGED FACE	BAGUE	ANILLO	RING
28	709 552 C2 26 309 R1	PIPE, SUMP SCREW, SOC-HD (2)	TUBE VIS	TUBO TORNILLO	ROHR SCHRAUBE
29	22 288 R1	RING, SUMP PIPE SEALING - FLANGED HUB	BAGUE	ANILLO	RING
30	709 517 C1	FLANGE, SUMP PIPE	BRIDE	BRIDA	FLANSCH

## DRIVE TRAIN

REF. NO.	PART NUMBER	DESCRIPTION	FRANÇAIS	ESPAÑOL	DEUTSCH
----------	-------------	-------------	----------	---------	---------

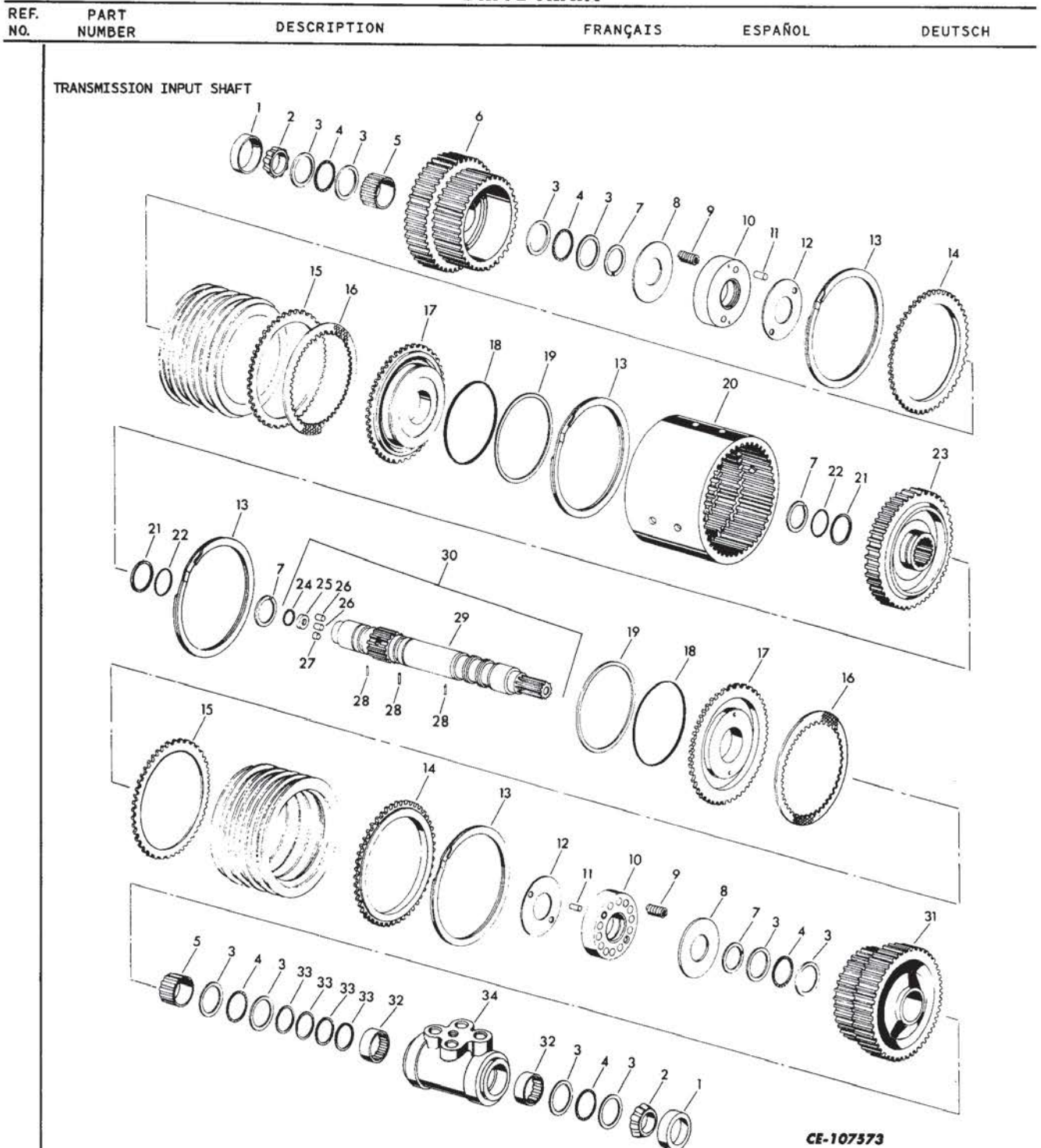
TRANSMISSION COUNTER SHAFT



CE-106780

1	630 695 C1	CUP, BEARING (2)	CUVETTE	TAZA	BECHER
2	630 694 C91	CONE, BEARING (2)	CONE DE RENVOI	RODAMIENTO CONICO	KEGEL
3	202 451 H1	RING, GEAR RETAINER SNAP (5)	BAGUE	ANILLO	RING
4	659 576 C1	GEAR, REVERSE DRIVEN	PIGNON	ENGRANAJE	ZAHNRAD
5	659 574 C1	SHAFT	ARBRE	EJE	WELLE
6	659 575 C1	GEAR, FORWARD DRIVEN	PIGNON	ENGRANAJE	ZAHNRAD
7	659 583 C1	GEAR, FIRST SPEED DRIVER	PIGNON	ENGRANAJE	ZAHNRAD

# DRIVE TRAIN



**CE-107573**

REF. NO.	PART NUMBER	DESCRIPTION	FRANÇAIS	ESPAÑOL	DEUTSCH
	654 682 C91	SHAFT ASSY., TRANSMISSION INPUT (CONSISTS OF THE FOLLOWING PARTS -	ARBRE	EJE	WELLE
1	630 695 C1	CUP, BEARING (2)	CUVETTE	TAZA	BECHER
2	630 694 C91	CONE, BEARING (2)	CONE DE RENVOI	RODAMIENTO CONICO	KEGEL
3	658 034 C2	RACE, THRUST BEARING (10) OR	CHEMIN DE ROULEMENT	ANILLO DE VOLADURA	LAUFRING
3	730 837 C1	RACE, THRUST BEARING (10)	CHEMIN DE ROULEMENT	ANILLO DE VOLADURA	LAUFRING
4	233 031 R91	BEARING, THRUST (5)	ROULEMENT	RODAMIENTO	LAGER
5	324 399 R91	BEARING, GEAR ROLLER (2)	ROULEMENT	RODAMIENTO	LAGER
6	654 258 C2	GEAR, REVERSE DRIVER	PIGNON	ENGRANAJE	ZAHNRAD
7	202 451 H1	RING, SNAP (4)	BAGUE	ANILLO	RING
8	658 042 C2	PLATE, SPRING RETAINER (2)	PLAQUE	PLACA	PLATTE

## DRIVE TRAIN

REF. NO.	PART NUMBER	DESCRIPTION	FRANÇAIS	ESPAÑOL	DEUTSCH
TRANSMISSION INPUT SHAFT - CONTINUED					
9	658 039 C1	SPRING, PISTON RETURN (28)	RESSORT	MUELLE	FEDER
10	658 040 C91	SLEEVE W/TWO PIN, 20 040 R1, LUBE (2)	DOUILLE	BUJE	BUCHSE
11	20 040 R1	PIN, GUIDE (4)	CHEVILLE	PASADOR	STIFT
12	658 092 C1	PLATE, SPRING INNER (2)	PLAQUE	PLACA	PLATTE
13	709 941 C1	RING, INTERNAL RETAINING (4)	BAGUE	ANILLO	RING
14	659 600 C3	PLATE, CLUTCH SUPPORT (2)	PLAQUE	PLACA	PLATTE
15	659 611 C1	PLATE, SEPARATOR (10)	PLAQUE	PLACA	PLATTE
16	654 594 C3	DISC, FRICTION (12)	DISQUE	DISCO	SCHEIBE
17	659 612 C1	PISTON, CLUTCH (2)	PISTON	PISTON	KOLBEN
18	659 713 C1	"O" RING, SEAL BACK-UP (2)	JOINT TORIQUE	SELLO ANULAR	RING
19	658 026 C1	SEAL, PISTON (LARGE) (2)	JOINT D'ETANCHEITE	SELLO	DICHTUNG
20	659 599 C1	DRUM, FORWARD-REVERSE (ORDER DRUM, 709 811 C1 AND (2) PLATES, 659 600 C2)	TAMBOUR	TAMBOR	TROMMEL
20	709 811 C1	DRUM, FORWARD-REVERSE	TAMBOUR	TAMBOR	TROMMEL
21	658 021 C1	SEAL, PISTON (SMALL) (2)	JOINT D'ETANCHEITE	SELLO	DICHTUNG
22	659 674 C1	"O" RING, SEAL BACK-UP (2)	JOINT TORIQUE	SELLO ANULAR	RING
23	659 588 C1	HUB, FORWARD-REVERSE	MOYEU	EJE	NABE
24	299 470 R1	RING, ADAPTER RETAINING	BAGUE	ANILLO	RING
25	654 684 C1	ADAPTER, SHAFT END	RACCORD	ADAPTADOR	ANSCHLUSS
26	20 556 R1	PIN, DOWEL (2)	CHEVILLE	PASADOR	STIFT
27	659 760 C1	PLUG, OIL METERING	BOUCHON	TAPON	STOPFEN
28	212 012 H1	PIN, SPRING (3)	CHEVILLE	PASADOR	STIFT
29		SHAFT (NOT FURNISHED SEPARATELY)	ARBRE	EJE	WELLE
30	659 759 C91	SHAFT ASSY. (COMPOSED OF - 1 ADAPTER           654 684 C1 2 PIN                 20 556 R1 3 PIN                 212 012 H1 1 PLUG               659 760 C1 1 RING                299 470 R1 \$1 SHAFT             )	ARBRE	EJE	WELLE
			RACCORD	ADAPTADOR	ANSCHLUSS
			CHEVILLE	PASADOR	STIFT
			CHEVILLE	PASADOR	STIFT
			BOUCHON	TAPON	STOPFEN
			BAGUE	ANILLO	RING
			ARBRE	EJE	WELLE
31	654 255 C2	GEAR, FORWARD DRIVER	PIGNON	ENGRANAJE	ZAHNRAD
32	619 085 C91	BEARING (2)	ROULEMENT	RODAMIENTO	LAGER
33	654 554 C1	RING, MANIFOLD SEAL (4)	BAGUE	ANILLO	RING
34	659 568 C91	MANIFOLD W/TWO BEARING, 619 085 C91, FORWARD-REVERSE	COLLECTEUR	MULTIPLE	VERTEILERROHR

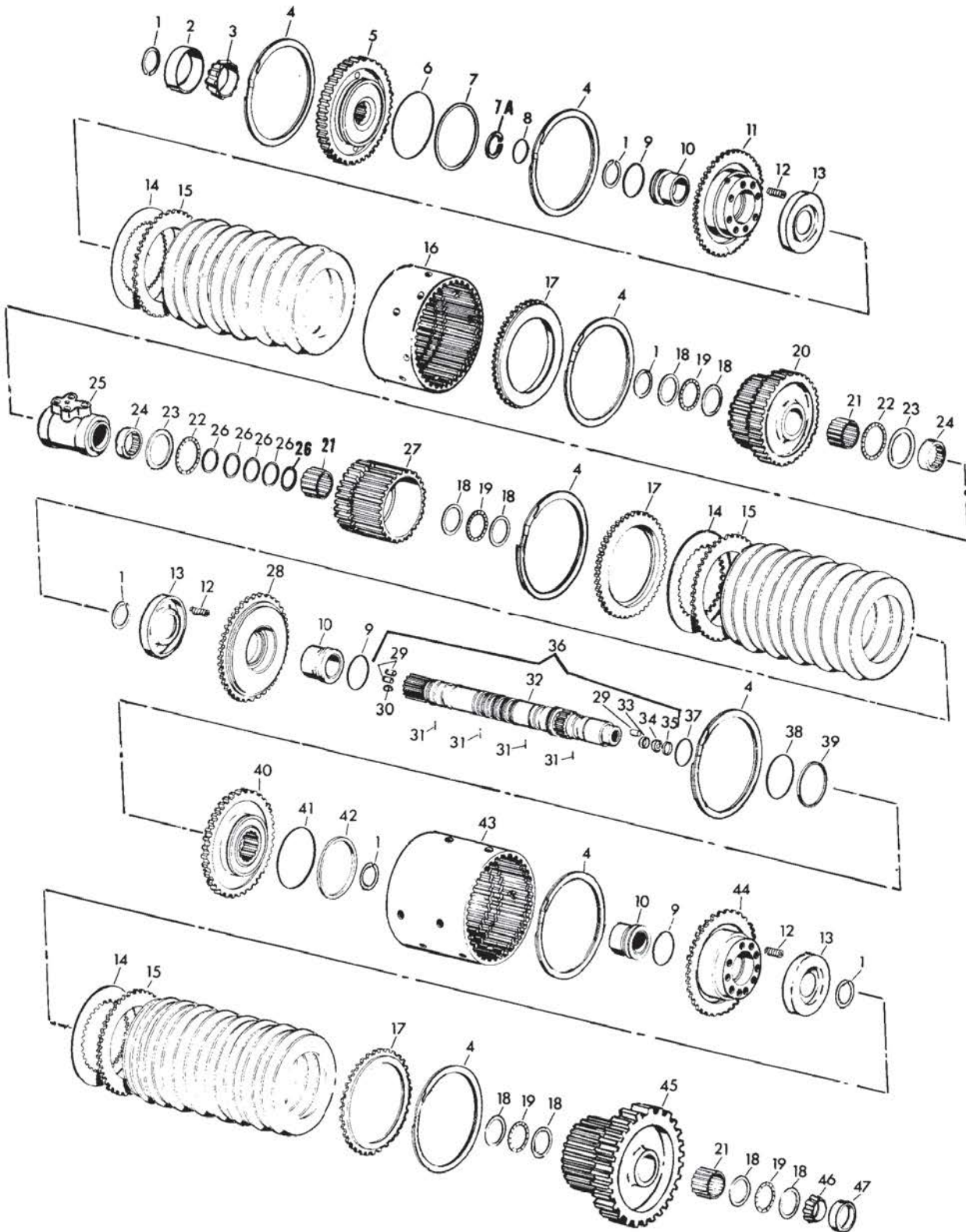
**DRIVE TRAIN**

---

MEMORANDA

# DRIVE TRAIN

## TRANSMISSION OUTPUT SHAFT



CE-107503B



## DRIVE TRAIN

REF. NO.	PART NUMBER	DESCRIPTION	Français	Español	Deutsch
TRANSMISSION OUTPUT SHAFT - CONTINUED					
	659 590 C91	SHAFT, TRANSMISSION OUTPUT (ORDER SHAFT, 709 502 C92 AND HUB, 716 759 C1) (SEE NOTE) POWERSHIFT *955 AND BELOW	ARBRE	EJE	WELLE
	709 502 C92	SHAFT, TRANSMISSION OUTPUT POWERSHIFT *956 AND UP ALSO CUSTOM APPLICATION (CONSISTS OF THE FOLLOWING PARTS -	ARBRE	EJE	WELLE
1	202 451 H1	RING, RETAINER SNAP (6)	BAGUE	ANILLO	RING
2	619 697 C1	CUP, BEARING	CUVETTE	TAZA	BECHER
3	619 696 C91	CONE, BEARING	CONE DE RENVOI	RODAMIENTO CONICO	KEGEL
4	709 942 C1	RING, INTERNAL RETAINING (7)	BAGUE	ANILLO	RING
5	659 601 C1 OR 659 601 C2	HUB, SECOND SPEED CLUTCH (ORDER HUB, 716 759 C1 AND RING, 716 757 C1) POWERSHIFT *955 AND BELOW	MOYEU	EJE	NABE
5	716 759 C1	HUB, SECOND SPEED CLUTCH (TOGETHER W/RING, 716 757 C1, WILL WORK FOR HUB, 659 601 C1 AND 659 601 C2) POWERSHIFT *955 AND BELOW	MOYEU	EJE	NABE
5	709 505 C1	HUB, SECOND SPEED CLUTCH (ORDER HUB, 716 758 C1 AND RING, 716 757 C1) POWERSHIFT *956 TO 1222 ALSO CUSTOM APPLICATION	MOYEU	EJE	NABE
5	716 758 C1	HUB, SECOND SPEED CLUTCH POWERSHIFT *1223 AND UP ALSO CUSTOM APPLICATION	MOYEU	EJE	NABE
6	659 712 C1	"O" RING, PISTON SECOND SEAL BACK-UP	JOINT TORIQUE	SELLO ANULAR	RING
7	658 020 C1	SEAL, PISTON SECOND	JOINT D'ETANCHEITE	SELLO	DICHTUNG
7A	716 757 C1	RING, CLUTCH HUB WEAR (USED W/HUB, 716 759 C1 OR HUB, 716 758 C1)	BAGUE	ANILLO	RING
8	295 204 R1	"O" RING, SHAFT AND SECOND HUB SEALING	JOINT TORIQUE	SELLO ANULAR	RING
9	317 923 R1	RING, SLEEVE SEALING (3)	BAGUE	ANILLO	RING
10	658 033 C1	SLEEVE, LUBE (3)	DOUILLE	BUJE	BUCHSE
11	659 597 C1	PISTON, SECOND SPEED CLUTCH	PISTON	PISTON	KOLBEN
12	658 081 C1	SPRING, PISTON RETURN (22)	RESSORT	MUELLE	FEDER
13	654 288 C1	PLATE, SPRING RETAINER (3)	PLAQUE	PLACA	PLATTE
14	658 354 C2	DISC, FRICTION (23)	DISQUE	DISCO	SCHEIBE
15	659 592 C1	PLATE, SEPARATOR (20)	PLAQUE	PLACA	PLATTE
16	659 598 C1	DRUM, SECOND SPEED CLUTCH (ORDER DRUM, 709 813 C1 AND (2) PLATES, 659 585 C2)	TAMBOUR	TAMBOR	TROMMEL
16	709 813 C1	DRUM, SECOND SPEED CLUTCH	TAMBOUR	TAMBOR	TROMMEL
17	659 585 C2	PLATE, CLUTCH SUPPORT (3)	PLAQUE	PLACA	PLATTE
18	658 034 C2	RACE, THRUST BEARING (8)	CHEMIN DE ROULEMENT	ANILLO DE VOLADURA	LAUFRING
18	OR 730 837 C1	RACE, THRUST BEARING (8)	CHEMIN DE ROULEMENT	ANILLO DE VOLADURA	LAUFRING
19	233 031 R91	BEARING, THRUST (4)	ROULEMENT	RODAMIENTO	LAGER
20	658 390 C2	GEAR, SECOND DRIVEN	PIGNON	ENGRENAGE	ZANHRAD
21	324 399 R91	BEARING, MANIFOLD THRUST BEARING (2)	ROULEMENT	RODAMIENTO * - TRANSMISSION SERIAL NUMBER	LAGER

NOTE: REWORK SHAFT, 709 502 C92, BY REPLACING HUB, 716 758 C1 WITH HUB, 716 759 C1.

## DRIVE TRAIN

REF. NO.	PART NUMBER	DESCRIPTION	FRANÇAIS	ESPAÑOL	DEUTSCH
TRANSMISSION OUTPUT SHAFT - CONTINUED					
22	233 053 R91	BEARING, MANIFOLD THRUST (2)	ROULEMENT	RODAMIENTO	LAGER
23	654 570 C1	RACE, MANIFOLD THRUST BEARING (2)	CHEMIN DE ROULEMENT	ANILLO DE VOLADURA	LAUFRING
	OR				
23	730 882 C1	RACE, MANIFOLD THRUST BEARING (2)	CHEMIN DE ROULEMENT	ANILLO DE VOLADURA	LAUFRING
24	619 085 C91	BEARING (2)	ROULEMENT	RODAMIENTO	LAGER
25	659 568 C91	MANIFOLD W/TWO BEARING, 610 085 C91	COLLECTEUR	MULTIPLE	VERTEILERROHR
26	654 554 C1	RING, MANIFOLD PORT SEAL (5)	BAGUE	ANILLO	RING
27	658 391 C2	GEAR, THIRD DRIVEN	PIGNON	ENGRENAJE	ZAHNRAD
28	659 594 C1	PISTON, THIRD SPEED CLUTCH	PISTON	PISTON	KOLBEN
29	20 556 R1	PIN, DOWEL (3)	CHEVILLE	PASADOR	STIFT
30	659 760 C1	PLUG, OIL METERING	BOUCHON	TAPON	STOPFEN
31	212 012 H1	PIN, SPRING (4) FOR 659 758 C91 (5) FOR 709 503 C92)	CHEVILLE	PASADOR	STIFT
32		SHAFT, OUTPUT (NOT FURNISHED SEPARATELY)	ARBRE	EJE	WELLE
33	70 128 R1	PLUG, CUP	BOUCHON	TAPON	STOPFEN
34	654 684 C1	ADAPTER, SHAFT END	RACCORD	ADAPTADOR	ANSCHLUSS
35	299 470 R1	RING, ADAPTER RETAINING	BAGUE	ANILLO	RING
36	659 758 C91	SHAFT ASSY. (ORDER SHAFT ASSY., 709 503 C92, HUB, 716 759 C1 AND RING, 716 757 C1) POWERSHIFT *955 AND BELOW	ARBRE	EJE	WELLE
36	709 503 C91	SHAFT ASSY. (ORDER SHAFT ASSY., 709 503 C92, HUB, 716 758 C1 AND RING, 716 757 C1) POWERSHIFT *956 TO 1222 ALSO CUSTOM APPLICATION	ARBRE	EJE	WELLE
36	709 503 C92	SHAFT ASSY. POWERSHIFT *1223 AND UP ALSO CUSTOM APPLICATION (COMPOSED OF - 1 ADAPTER           654 684 C1 3 PIN                20 556 R1 5 PIN                212 012 H1 1 PLUG              70 128 R1 1 PLUG              659 760 C1 1 RING              299 470 R1 \$1 SHAFT            )	ARBRE RACCORD CHEVILLE CHEVILLE BOUCHON BOUCHON BAGUE ARBRE	ADAPTADOR PASADOR PASADOR TAPON TAPON ANILLO EJE	ANSCHLUSS STIFT STIFT STOPFEN STOPFEN RING WELLE
37	380 910 R1	"O" RING, SHAFT AND HUB SEAL	JOINT TORIQUE	SELLO ANULAR	RING
38	658 029 C1	SEAL, PISTON THIRD	JOINT D'ETANCHEITE	SELLO	DICHTUNG
39	659 711 C1	"O" RING, PISTON THIRD SEAL BACK-UP	JOINT TORIQUE	SELLO ANULAR	RING
40	659 595 C1	HUB, CLUTCH FIRST AND THIRD	MOYEU	EJE	NABE
41	659 963 C1	"O" RING, PISTON FIRST SEAL BACK-UP	JOINT TORIQUE	SELLO ANULAR	RING
42	659 962 C1	SEAL, PISTON FIRST	JOINT D'ETANCHEITE	SELLO	DICHTUNG
43	659 596 C1	DRUM, FIRST AND THIRD SPEED CLUTCH (ORDER DRUM, 709 812 C1 AND (2) PLATES, 659 585 C2)	TAMBOUR	TAMBOR	TROMMEL
43	709 812 C1	DRUM, FIRST AND THIRD SPEED CLUTCH	TAMBOUR	TAMBOR	TROMMEL
44	659 593 C1	PISTON, FIRST SPEED CLUTCH	PISTON	PISTON	KOLBEN
45	659 683 C2	GEAR, FIRST DRIVEN	PIGNON	ENGRANAJE	ZAHNRAD
46	630 694 C91	CONE, BEARING	CONE DE RENVOI	RODAMIENTO CONICO	KEGEL
47	630 695 C1	CUP, BEARING	CUVETTE	TAZA	BECHFR
				* - TRANSMISSION SERIAL NUMBER.	

## DRIVE TRAIN

REF. NO.	PART NUMBER	DESCRIPTION	FRANÇAIS	ESPAÑOL	DEUTSCH
TRANSMISSION REVERSE IDLER SHAFT					
1	659 919 C1 27 432 R1	RETAINER, REVERSE IDLER SHAFT BOLT	ARRETOIR BOULON	RETENEDOR PERNO	HALTEVORRICHTUNG SCHRAUBE
2	290 987 R1	RING, REVERSE IDLER SHAFT SEALING	BAGUE	ANILLO	RING
3	533 729 R91	CONE, BEARING (2)	CONE DE RENVOI	RODAMIENTO CONICO	KEGEL
4	376 463 C1	CUP, BEARING (2)	CUVETTE	TAZA	BECHER
5	659 966 C1	SPACER, BEARING CONE	ENTRETOISE	ESPACIADOR	DISTANZROHR
6	659 941 C1	RING, BEARING CUP SNAP	BAGUE	ANILLO	RING
7	654 486 C1	GEAR, REVERSE IDLER	PIGNON	ENGRANAJE	ZAHNRAD
8	659 920 C1	SHAFT, REVERSE IDLER	ARBRE	EJE	WELLE

CE-106771