

INTERNATIONAL INDUSTRIAL POWER



SERVICE BULLETIN

February 22, 1955

IP

FILE: Steering Clutches
and Brakes

NO: N-55-5

MODEL: TD-14A (141 Series)
and TD-18A (181
Series) Crawler
Tractors

SUBJECT: Instructions for Adjustment of
Steering Clutch Booster

The necessary adjustment required for operation of the new hydraulic steering clutch booster (released in service bulletin N-55-1) on the TD-14A (141 series) and TD-18A (181 series) are given below, with illustrations showing location of adjustments.

NOTE: For periodic field adjustment, the operator would only be concerned with item four (4) of preliminary instructions and all of the final adjustment instructions.

INSTRUCTIONS FOR ADJUSTMENT OF STEERING CLUTCH HYDRAULIC BOOSTER

Preliminary Adjustment

The following adjustments give minimum amount of final adjustment.

1. Set dimension "A" to 1-1/4 and connect links "1" to booster lever "2". (Adjusting rods "3" disconnected at release lever "4". (See illust. 1.)
2. Set manual pickup screw "5" so that cam on hand lever "6" moves maximum toward dump-off valve "7", without striking opening in booster lever "2".
3. Set hand lever "6" at knob 14 inches from dash, and lock hand lever bumper "8". (Measure horizontally from dash.)
4. Set 7/32 free clearance for steering clutch release bearing between steering clutch release lever "4" and steering clutch release lever set screw "9". (See illust. 2.)
5. Adjust steering clutch release rod "3" until clevis pin matches hole of release lever "4" when release lever is against set screw "9" (with free clearance).
6. Loosen hand lever bumper "8", and reset so that cam on hand lever "6" moves maximum distance away from dump-off valve, but does not strike opening in booster lever.

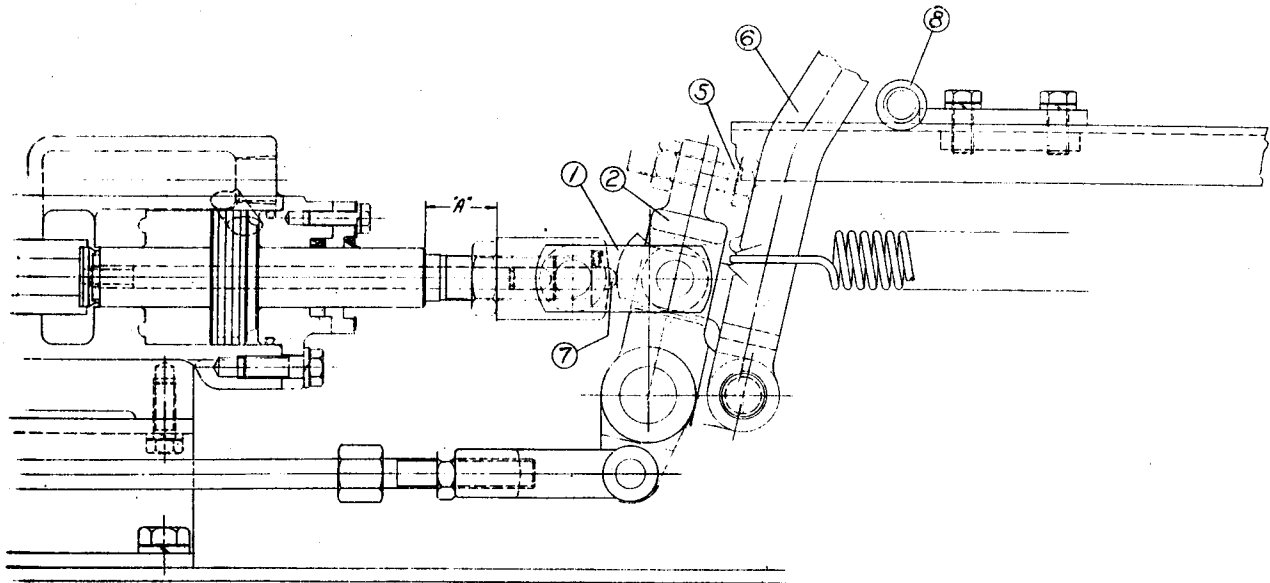
Final Adjustment:

With gear shift levers in neutral and engine clutch disengaged, start engine and run at low idle. If hand lever moves toward seat without manual assist, or if when pulled to rear position the lever does not return, increase dimension "A" to the point where the lever will return freely.

If the levers do not move toward rear position upon starting engine, decrease dimension "A" until levers move toward seat without manual assist, then proceed as in above paragraph.

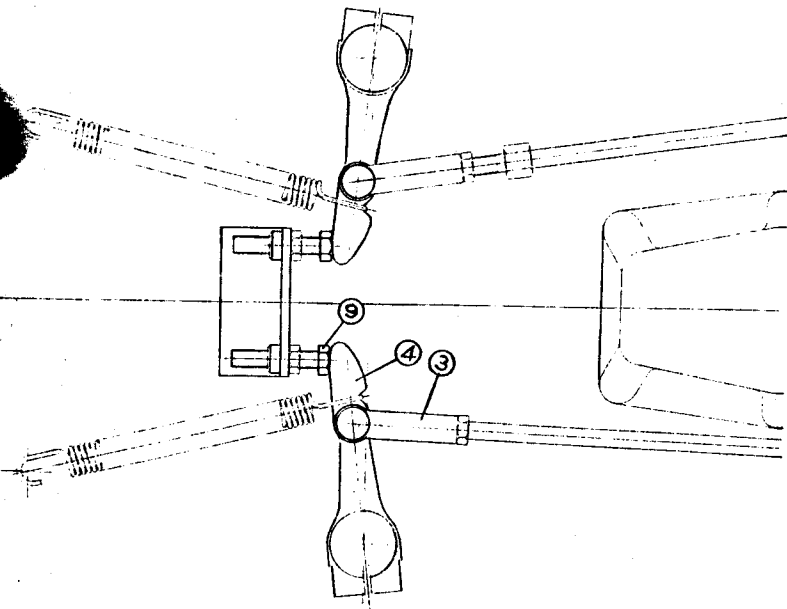
After these adjustments, recheck and set 7/32 free clearance at release stop screw.

To adjust tie rod "10", turn rod until snug, then lock into position with jam nut "11". (See illust. 3.)



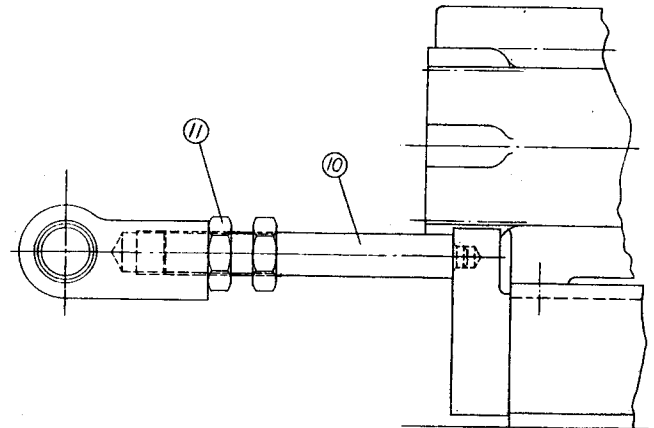
Illust. 1

Showing Location to Set Dimension "A" to 1-1/4"



Illust. 2

Showing Location to Set 7/32 Free Clearance Between Steering Clutch Lever (4) and Steering Clutch Release Lever Set Screw (9)



Illust. 3

Showing Location to Adjust Tie Rod (10) and Jam Nut (11)

Service Publications Section
Industrial Power Division
International Harvester Company
Melrose Park, Illinois