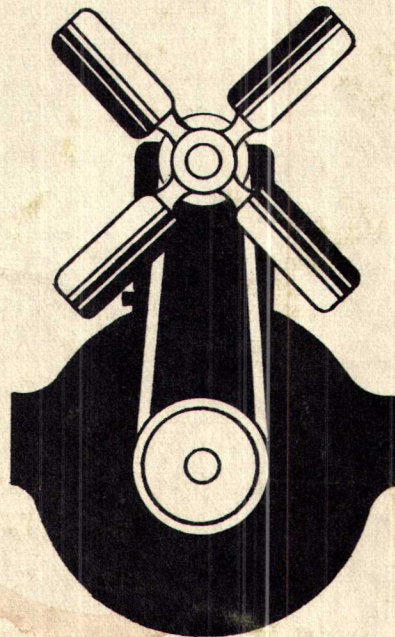


# PARTS MANUAL

## INTERNATIONAL<sup>®</sup> U-264-6 ENGINE

model  
H-50 & H-40 GASOLINE  
PAYLOADER



PRICE \$1.00

FORM

U-264-6A

MAY, 1962

REVISED SEPTEMBER 1965

PRINTED IN U. S. A.

# HOUGH<sup>®</sup>



THE FRANK G. HOUGH CO.  
LIBERTYVILLE, ILLINOIS

SUBSIDIARY - INTERNATIONAL HARVESTER COMPANY



IN CANADA - HOUGHCO PRODUCTS LTD.,  
CANDIAC, QUE.



ADD & DELETE LIST FOR I. H. C. ENGINE G-264  
AS USED ON "PAYLOADER" MODELS H-40 GAS.

Use this list with Engine Parts Manual, Form U-264-6A  
for complete listing of service parts as used in the I. H. C.  
engine G-264 used in Model H-40 Gas "PAYLOADERS."

**G-264 ENGINE**  
**FOR**  
**H-40 GASOLINE**  
**"PAYLOADERS"**

877 978091  
**SERVICE ENGINE**

ENGINE, Stripped (Gasoline) Hough #191589H1

ENGINE, Skeleton (Gasoline) I. H. C. #173128R95

---

Add & Delete List for G-264 Engine 191589H1 as used on  
H-40 "GAS" "PAYLOADER" Models.

Page 6 Delete Oil Pump Assembly #230411R91 and replace it with  
#332435R91 Pump.

332435R91	Pump, Oil, W/Screen - Includes the following items . . . . .	1
230421R91	Pump, Oil - less Screen . . . . .	1
359160R91	Screen, Oil Pump . . . . .	1
120123	Pin, 1/8 x 1-1/4" . . . . .	1
352221R1	Seal, "O" Ring . . . . .	1

Page 6 Replace Item 8 #178050R91 Screen, Oil Pump with #359160R91.

Replace Item 12 #186126H1 Oil Pan with I. H. #601693C.

Page 2 Replace Item 1 #268313R11 Cylinder Head Cover with  
#378618R11.

---

SERVICE ENGINE

The Frank G. Hough Co. #151476H3 Engine - positive ground. Used on Models H-50A of S/N 16AH-1001 thru 16AH-1700.

The Frank G. Hough Co. #176818H3 Engine - negative ground. Used on Models H-50B of S/N 16BH-1701 thru 1915 and 1917.

High Altitude Engine #182674H2.  
Kit - High Altitude #182671H1.

See Voltage Regulator Groups for positive and negative ground units.

INDEX OF CONTENTS

NAME	PAGE
CYLINDER HEAD COVER .....	2
MANIFOLD & RELATED PARTS .....	3
CYLINDER HEAD & ACCESSORIES .....	5
OIL PUMP & OIL PAN GROUP .....	6
FLYWHEEL & HOUSING .....	7
FRONT COVER, CRANKCASE .....	8
CONNECTING RODS, BEARINGS, PISTONS & RINGS .....	9
CRANKSHAFT GROUP .....	10
CAMSHAFT, BEARINGS & GEAR .....	11
CRANKCASE, BEARINGS & RELATED PARTS .....	12
FILTER, LUBRICATING .....	14
WATER OUTLET, THERMOSTAT & PUMP .....	15
CARBURETOR .....	17
FUEL PUMP .....	19
GOVERNOR & ATTACHING PARTS .....	20
DRIVE PULLEY, AIR COMPRESSOR .....	20

ELECTRICAL SYSTEM

DISTRIBUTOR, SPARK PLUGS & CABLES .....	23
GENERATOR .....	25
STARTING MOTOR .....	27
REGULATOR, VOLTAGE (POSITIVE GROUND) .....	29
REGULATOR, VOLTAGE (NEGATIVE GROUP) .....	30

IMPORTANT

Always give the following information on all repair parts orders.

1. The part number, name & quantity of items needed.
2. The serial number of the engine & machine.
3. Give the destination and method of shipment desired along with any special invoicing instructions.

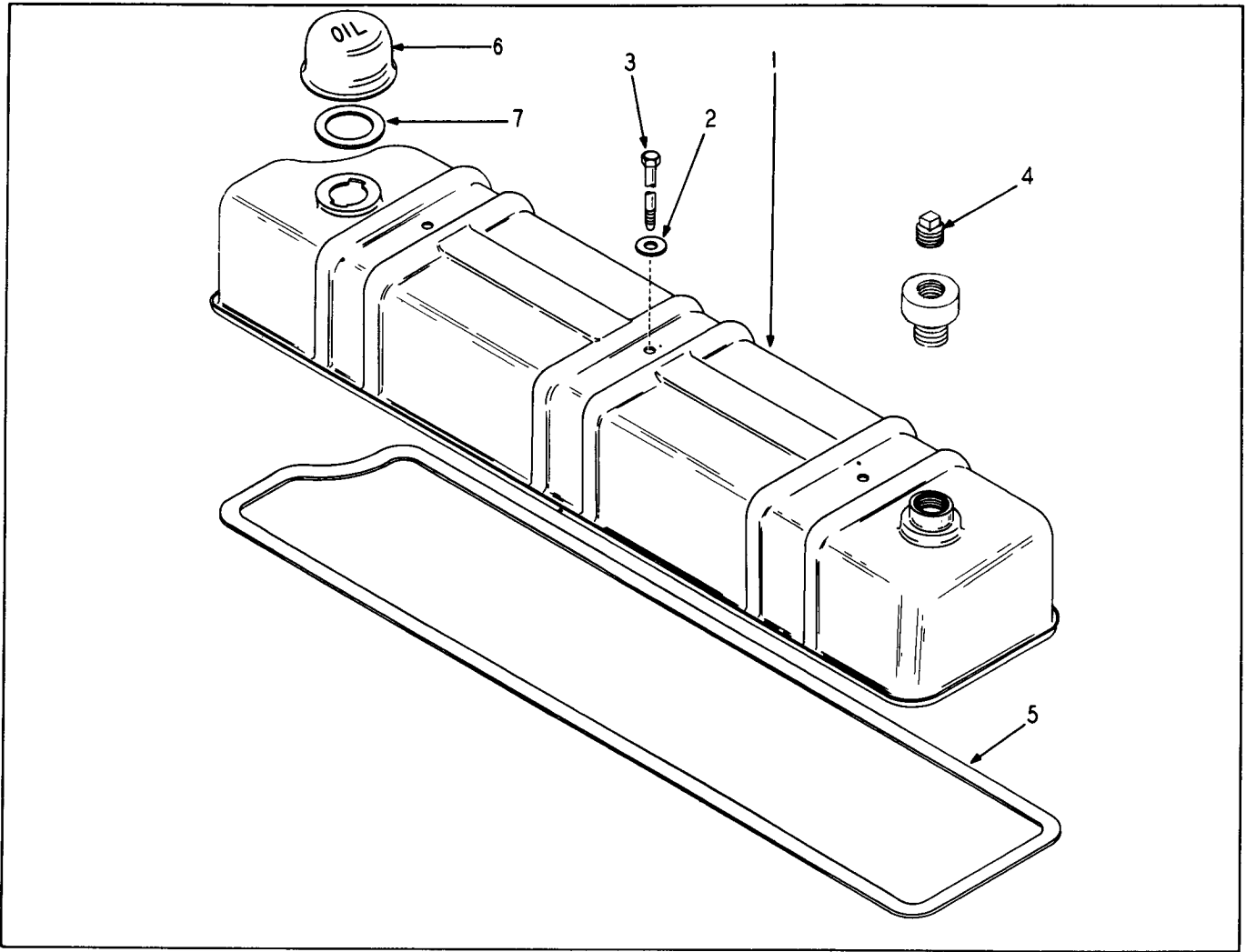


Fig. 1  
CYLINDER HEAD COVER

ITEM NO.	PART NO.	PART NAME	Qty.
1	268313R11	COVER, Cylinder Head .....	1
2	399Q	WASHER, Flat .....	3
3	168144R1	BOLT .....	3
	164420R1	GROMMET .....	3
4 *	P - 18	PLUG, Cover .....	1
5	369983R1	GASKET, Cover .....	1
6	76770R91	CAP, Oil Filler .....	1
7	87351R1	GASKET .....	1
		* - Hough Part Number	

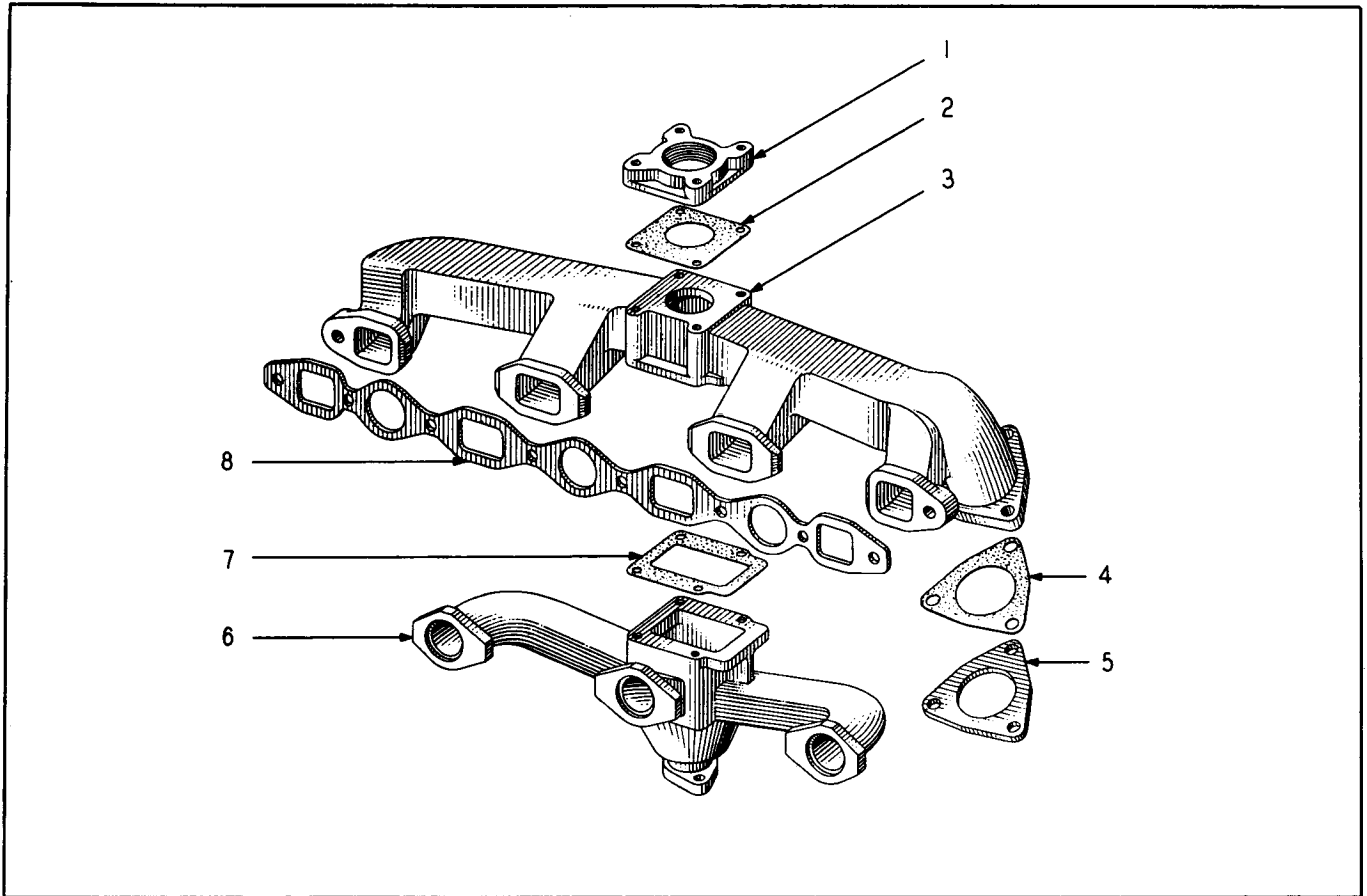


Fig. 2  
MANIFOLD & RELATED PARTS

ITEM NO.	PART NO.	PART NAME	Qty.
1	265554R1	FLANGE, Exhaust Pipe	1
	191163	SCREW, Cap, 3/8-16 x 4"	4
✓ 2	265555R1	GASKET, Flange	1
3	262507R1	MANIFOLD, Exhaust	1
	33894V	STUD, Carb. Mtg.	2
	133757R1	SCREW, Cap, 3/8-16 x 1-1/4"	6
	180126	SCREW, Cap, 3/8-16 x 1-1/2"	2
	127507H	WASHER, Manifold to Cyl. Hd.	8
	229292R1	WASHER, Tab Lock	8
* ✓ 4	262509R1	GASKET, Exh. Manifold Sealing Plate	1
* 5	262508R1	PLATE, Sealing-Exhaust Manifold	1
* 120377		NUT, 3/8" NC	3
* 180126		SCREW, Cap, 3/8" NC x 1-1/2"	3
* 120382		WASHER, Lock 3/8"	3
6	262506R1	MANIFOLD, Intake	1
	124482R1	PILOT, Intake Manifold	2
× 7	85868R1	GASKET, Intake to Exhaust Manifold	1
8	69752R1	GASKET, Manifold to Cylinder Head	1
	318059R91	SET, Gasket - Cylinder Head	1
* Items deleted on later units.			

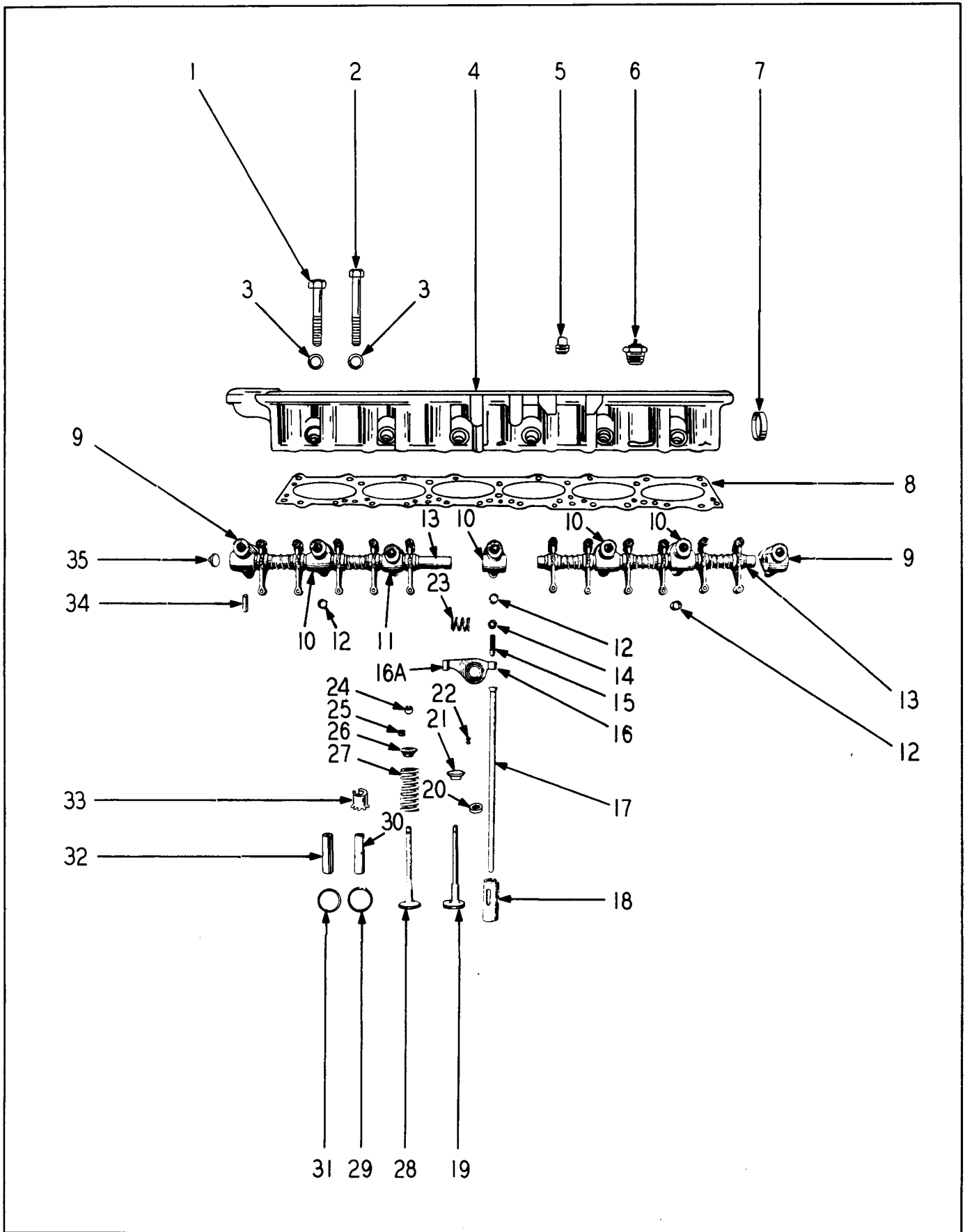


Fig. 3  
CYLINDER HEAD & ACCESSORIES

Fig. 3  
CYLINDER HEAD & ACCESSORIES

ITEM NO.	PART NO.	PART NAME	Qty.
	318059R91	SET, Gasket-Cylinder Head .....	1
	259203C91	HEAD, Cylinder Assembly (Includes next item & Items 18, 20, 21 and 27) .....	1
	184873R92	HEAD, Cylinder Assembly (Includes Items 4, 5, 7, 30, 31 and 32)....	1
1	69722R1	BOLT, Short .....	8
2	118643HA	BOLT, Long .....	7
3	58516H	WASHER, Lock .....	15
4	164414R1	HEAD, Cylinder .....	1
5	103868	PLUG, Pipe .....	1
	179852	BOLT, 7/16 NC x 1/2" .....	2
	103322	WASHER, Lock 7/16" .....	1
7	70128R1	PLUG .....	1
8	164418R1	GASKET, Cylinder Head .....	1
9	164422R1	BRACKET, Front & Rear .....	2
10	164423R1	BRACKET .....	3
11	164425R1	BRACKET, Intermediate #3 and #5 .....	2
12	69500R1	PIN, Hollow .....	3
13	76953R3	SHAFT .....	2
14	133093R1	NUT .....	12
15	16067DA	SCREW, Cap .....	12
	164432R91	ARM ASSEMBLY, Rocker - Includes Items 14, 15, 16 and 16A) .....	12
16		ARM, Rocker (NSS) .....	12
16A	69732	BUSHING, Rocker Arm .....	12
17	164436R91	ROD, Valve Lifter .....	12
18	75524R3	TAPPET, Valve .....	12
19	234276R1	VALVE, Intake .....	6
	866834R1	DEFLECTOR, Intake Valve .....	6
20	111024R1	WASHER, Intake Valve .....	6
21	151167R3	RETAINER, Intake Valve .....	6
22	41339D	LOCK, Intake Valve .....	12
23	35619H	SPRING .....	6
24	84482R1	CUP, Exhaust Valve .....	6
25	84484R3	LOCK, Exhaust Valve .....	12
26	105306R2	RETAINER, Exhaust Valve .....	6
27	76954R1	SPRING, Valve .....	12
28	164429R1	VALVE, Exhaust .....	6
29	110823R1	SEAT, Intake Valve .....	6
	110833R1	SEAT, Intake Valve .....	6
30	237247R1	GUIDE, Intake Valve .....	6
	126229R1	SEAT, Exh. Valve .015 O/S .....	6
	112509R1	SEAT, Exh. Valve .030 O/S .....	6
31	126373R1	SEAT, Exh. Valve - Std. ....	6
32	649421R1	GUIDE, Exh. Valve .....	6
33	75941H	DAMPER .....	12
34	17244R1	PIN, Spring .....	2
35	109544R1	PLUG, Expansion .....	2
	1002331R1	TAG, Tappet Setting Instructions .....	1

(NSS) - Not Serviced Separately.



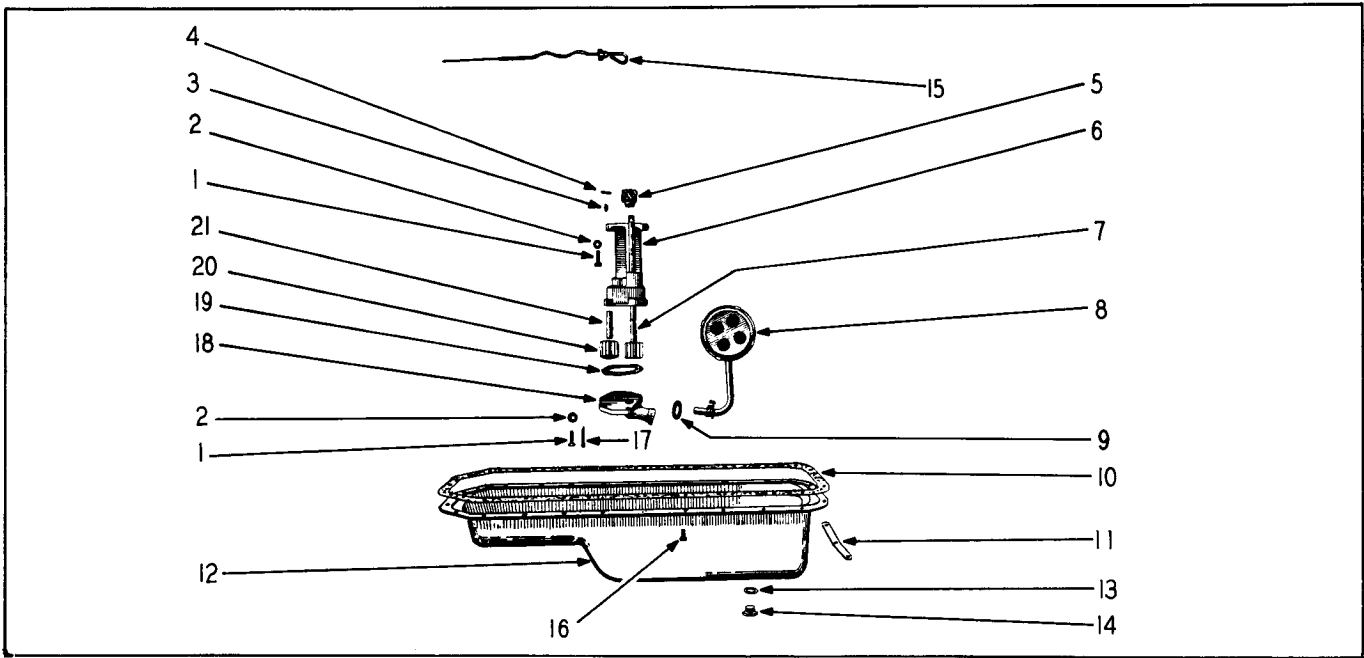


Fig. 4  
OIL PUMP & PAN GROUP

ITEM NO.	PART NO.	PART NAME	Qty.
	230411R91	PUMP ASSEMBLY, Oil - Includes Items 3, 4, 5, 6, 18, 19, 20 & 4 Bolts and Lockwashers 5/16 NC x 1" and Item 230409R1 Gear & Shaft Assembly .....	1
1	180079	BOLT, 5/16" NC x 1" .....	2
2	120214	WASHER, Lock, 5/16" .....	2
3	103905	KEY, Woodruff .....	1
4	112011	PIN .....	1
5	69608R1	GEAR, Drive .....	1
	230410R11	BODY ASSEMBLY, Includes Items 6 and 21 .....	1
6	230410R1	BODY .....	1
	230409R91	SHAFT ASSEMBLY, Includes Items 7 and 20 .....	1
7	69606R1	SHAFT .....	1
8	308367R91	SCREEN, Oil Pump .....	1
9	352221R1	"O" RING .....	1
10	369984R1	GASKET, Oil Pan .....	1
11	114869R1	REINFORCEMENT, Oil Pan .....	1
* 12	186126H1	PAN, Oil .....	1
13	3405H	GASKET, Drain Plug .....	1
14	41300HA	PLUG, Drain .....	1
15	96435R11	GAUGE, Oil Level .....	1
16	179816	BOLT, 5/16 - 18 x 3/4" .....	25
	103320	WASHER, Lock 5/16" .....	25
17	137195	PIN, Cotter 1/8 x 1-1/4" .....	1
18	169679R1	COVER, Oil Pump Body .....	1
	180079	BOLT, 5/16 NC x 1" .....	4
	120214	WASHER, Lock 5/16" .....	4
19	69607R1	GASKET, Cover .....	1
20	227713R1	GEAR, Drive & Driven .....	2
21	35647H	SHAFT .....	1
	143997	PLUG, 1/4" square socket .....	1
		* Hough Part Number	

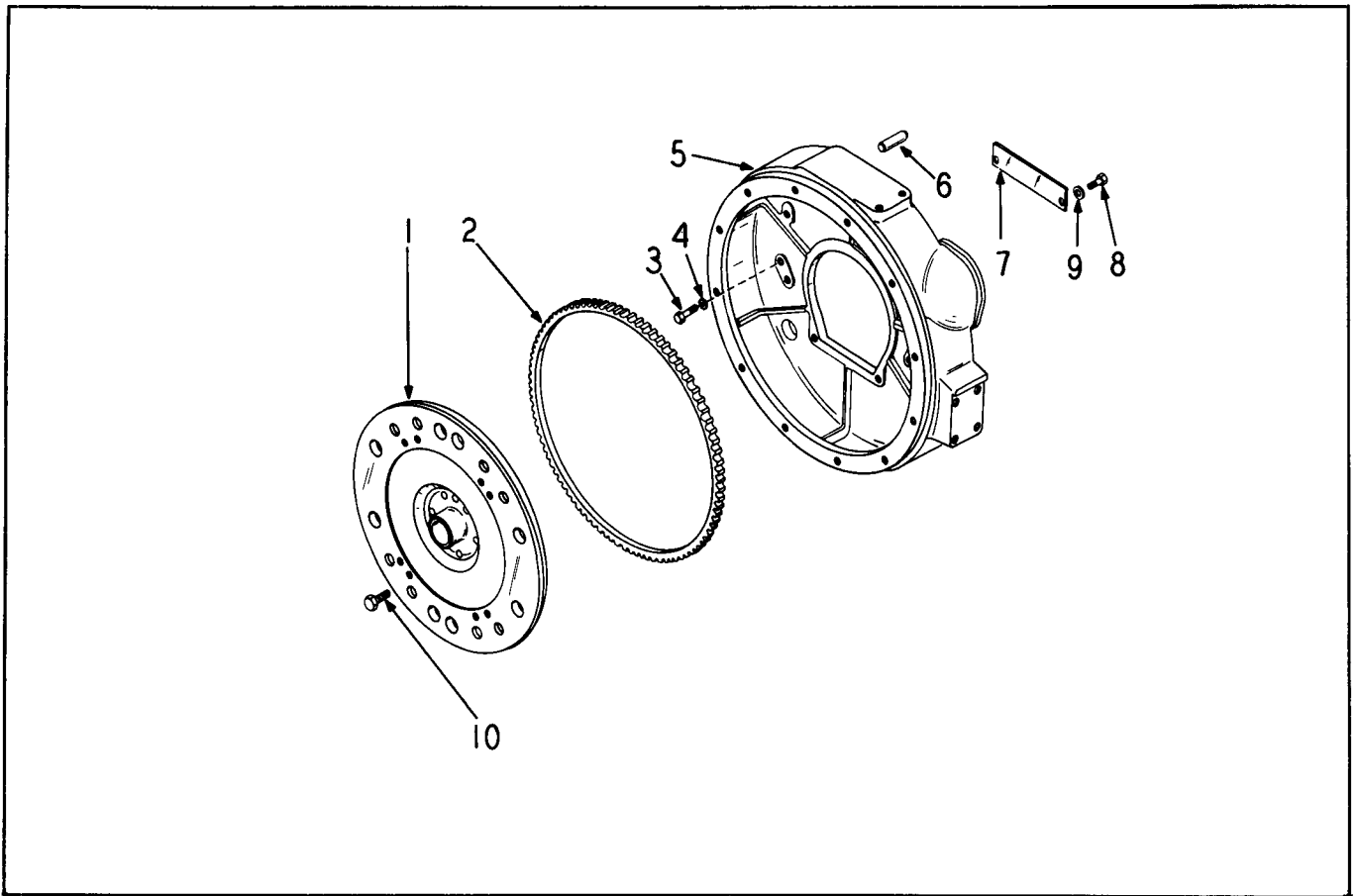


Fig. 5  
FLYWHEEL & HOUSING

ITEM NO.	PART NO.	PART NAME	Qty.
	308373R11	FLYWHEEL & RING GEAR ASSY. (Includes Items 1 & 2) .....	1
1		FLYWHEEL (NSS) Order #308373R11 .....	1
2	153586R1	GEAR, Ring .....	1
3	205079R1	SCREW, Cap .....	6
4	136857	WASHER, Lock .....	6
5	308374R2	HOUSING, Flywheel .....	6
	* 137192H1	PLUG, Bellhousing .....	1
	164694R1	ADAPTER HOUSING .....	1
	1769Y	PIN, Dowel, Adapter Housing .....	2
	136857	WASHER, Lock 7/16" .....	6
	205079R1	BOLT .....	6
	98051R1	COVER, Timing Indicator .....	1
	113955	BOLT .....	1
	103319	WASHER, Lock .....	1
	103339	WASHER, Flat .....	1
6	1769Y	PIN .....	2
7	367225R1	SEAL, Dust .....	1
8	179814	BOLT .....	2
9	103340	WASHER, Flat .....	2
10	70426R1	BOLT .....	6
		* Hough Part Number (NSS) - Not Serviced Separately	

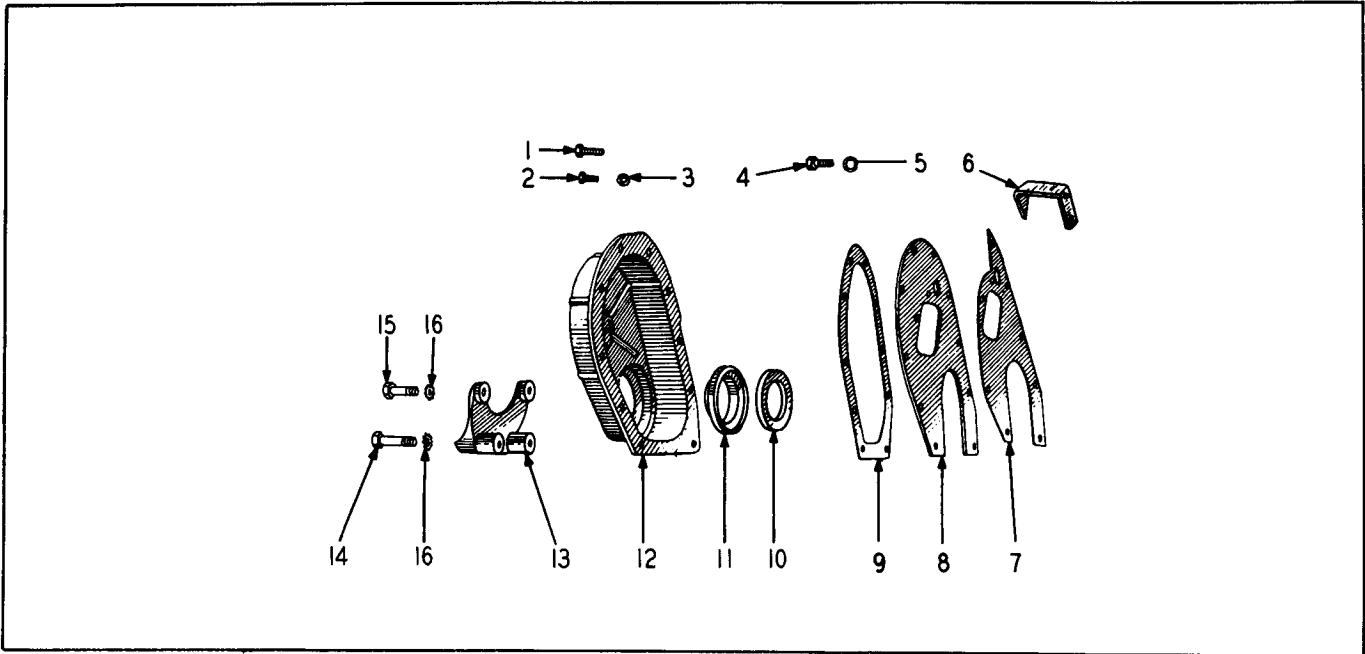


Fig. 6  
CRANKCASE FRONT COVER GROUP

ITEM NO.	PART NO.	PART NAME	Qty.
1	179837	BOLT, 3/8 NC x 3/4"	3
2	181331	BOLT, 5/16 NF x 1/2"	3
3	103025	NUT, 5/16" NF	3
4	179837	BOLT, 3/8 NC x 3/4"	2
5	103321	WASHER, Lock	2
6	305556R1	POINTER, Timing	1
7	69762R2	GASKET, Plate to Crankcase	1
8	69744R1	PLATE, Front	1
9	69764R1	GASKET, Cover	1
10	71762R1	FELT	1
11	71764R1	RETAINER, Seal	1
12	69765R11	COVER, Front	1
13	169134R11	BRACKET, Front Engine Mounting	1
14	179847	SCREW, Cap	2
15	179841	SCREW, Cap	2
16	11406	WASHER, Lock	4

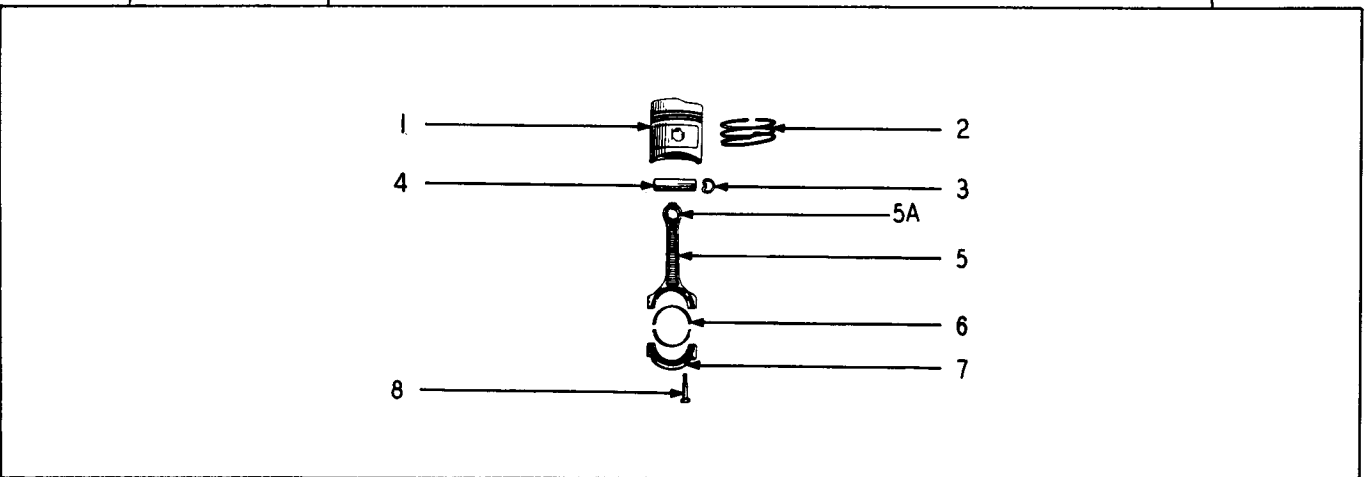


Fig. 7  
CONNECTING RODS, BEARINGS, PISTONS & RINGS

Fig. 7  
CONNECTING RODS, BEARINGS, PISTONS & RINGS

ITEM NO.	PART NO.	PART NAME	Qty.	
1	683368R11	PISTON, Internal Combustion (Includes Items 3 & 4) .....	6	
	172446R11	PISTON, Std. ....	6	
	172447R11	PISTON, .005 O/S .....	6	
	172448R11	PISTON, .010 O/S .....	6	
	172449R11	PISTON, .020 O/S .....	6	
	172450R11	PISTON, .030 O/S .....	6	
	172451R11	PISTON, .040 O/S .....	6	
	172452R11	PISTON, .050 O/S .....	6	
		PISTON, .060 O/S .....	6	
		Order as Needed		
		HI-ALTITUDE PISTONS .....		
		172453R11 PISTON, Std. ....	6	
		172454R11 PISTON, .005 O/S .....	6	
		172455R11 PISTON, .010 O/S .....	6	
		172456R11 PISTON, .020 O/S .....	6	
		172457R11 PISTON, .030 O/S .....	6	
		172458R11 PISTON, .040 O/S .....	6	
		172459R11 PISTON, .050 O/S .....	6	
		172460R11 PISTON, .060 O/S .....	6	
	2		RING SET, (For One Piston) .....	
		173187R91	RING SET, Standard .....	6
		173188R91	RING SET, .020 O/S .....	6
		173189R91	RING SET, .030 O/S .....	6
		171190R91	RING SET, .040 O/S .....	6
			Order as Needed	
			INDIVIDUAL RINGS STD. PC 200K .....	
141869R1		RING, Compression .020 O/S .....	6	
141870R1		RING, Compression .030 O/S .....	6	
141871R1		RING, Compression .040 O/S .....	6	
141872R1		RING, Compression .060 O/S .....	6	
		STANDARD PC70      STANDARD PC98		
173174R1	RING, .020 O/S      149098R91 RING, Oil .020 O/S	6		
173175R1	RING, .030 O/S      149098R91 RING, Oil .030 O/S	6		
173176R1	RING, .040 O/S      149099R91 RING, Oil .040 O/S	6		
173177R1	RING, .060 O/S      149100R91 RING, Oil .060 O/S	6		
	RING SET (For Six Pistons)			
173182R91	RING SET, Standard .....	1		
173183R91	RING SET, .020 O/S .....	1		
173184R91	RING SET, .030 O/S .....	1		
173185R91	RING SET, .040 O/S .....	1		
173186R91	RING SET, .060 O/S .....	1		
3	19517D	RING, Retaining .....	12	
4	70014R1	PIN, Piston (Standard) .....	6	
	70015R1	PIN, Piston .005 O/S .....	6	
	70016R1	PIN, Piston .008 O/S .....	6	
	70009R21	ROD ASSEMBLY, CONN. (Includes Items 5, 5A, 6, 7 & 8) .....	6	
5		ROD, (NSS) .....	6	
5A	70012R1	BUSHING, Piston Pin .....	6	
6		BEARING, Sleeve (Two Halves) Order as Needed .....		
	141799R41	BEARING, Sleeve, Std. ....	6	
	141800R41	BEARING, Sleeve, .002 U/S .....	6	
	155579R41	BEARING, Sleeve, .010 U/S .....	6	
	141801R41	BEARING, Sleeve, .020 U/S .....	6	
	141802R41	BEARING, Sleeve, .030 U/S .....	6	
	141803R41	BEARING, Sleeve, .060 U/S .....	6	

(NSS) - Not Serviced Separately

(Continued on following page)

Fig. 7  
CONNECTING RODS, BEARINGS, PISTONS & RINGS (Continued)

ITEM NO.	PART NO.	PART NAME	Qty.
7	141804R94	BEARING SET (One Set Consists of Six Bearings) .....	1
	141805R94	BEARING SET, Standard .....	1
	155560R94	BEARING SET, .002 U/S .....	1
	141806R94	BEARING SET, .010 U/S .....	1
	141807R94	BEARING SET, .020 U/S .....	1
	141808R94	BEARING SET, .030 U/S .....	1
			BEARING SET, .060 U/S .....
8	70013R1	CAP (NSS) .....	6
		BOLT .....	12
(NSS) - Not Serviced Separately			

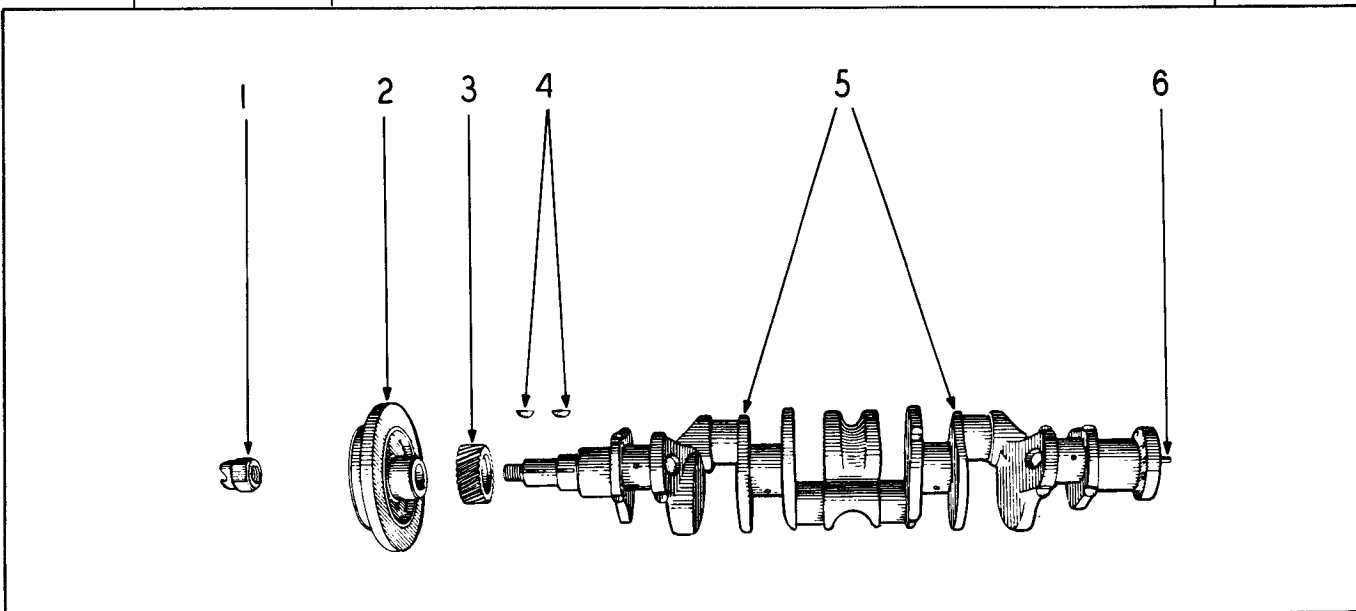


Fig. 8  
CRANKSHAFT GROUP

ITEM NO.	PART NO.	PART NAME	Qty.
1	219760	NUT, Crank .....	1
* 2	176943H1	DAMPER & PULLEY ASSEMBLY .....	1
3	76978R1	GEAR, Helical .....	1
4	103462	KEY, Woodruff .....	2
5	382711R91	CRANKSHAFT (Std.) .....	1
	382716R91	CRANKSHAFT (u/s) .....	1
	71763R1	SLINGER, Oil .....	1
* Hough Part Number			



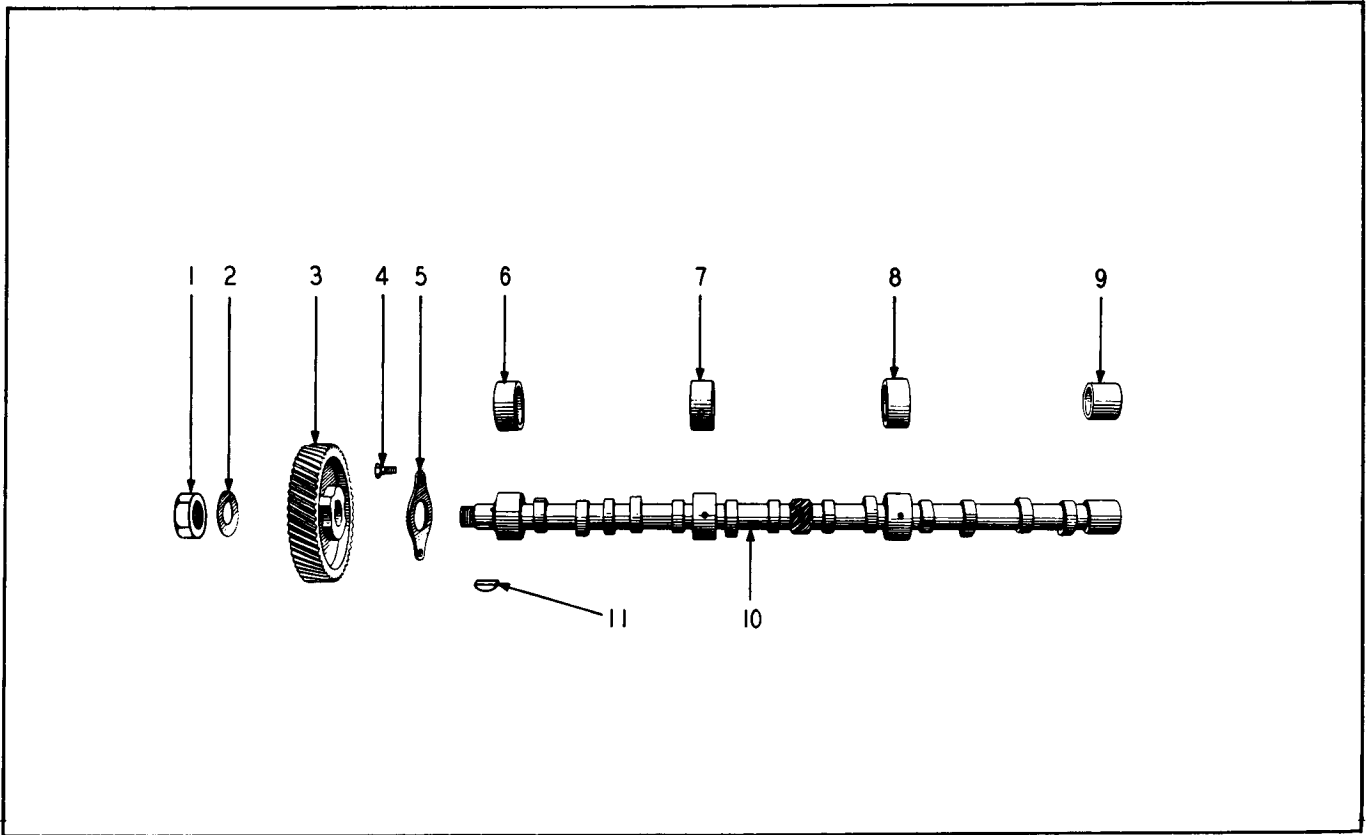


FIG. 9  
CAMSHAFT BEARINGS & GEAR

ITEM NO.	PART NO.	PART NAME	Qty.
1	16026DB	NUT .....	1
2	16025D	RETAINER, Camshaft Nut .....	1
	69682R91	GEAR SET (Includes next Item 8 #76978R1 Gear) .....	1
3	69490R1	GEAR .....	1
4	70425R1	BOLT .....	1
5	35650HA	FLANGE .....	1
	130476R91	BEARING SET (Includes Items 6 thru 9) .....	1
6	70259R1	BEARING, Front .....	1
7	70260R1	BEARING, Second .....	1
8	70261R1	BEARING, Third .....	1
9	70262R1	BEARING, Rear .....	1
10	211390R11	CAMSHAFT .....	1
11	127559	KEY, Woodruff .....	1
	130476R93	BUSHING SET, Camshaft .....	1

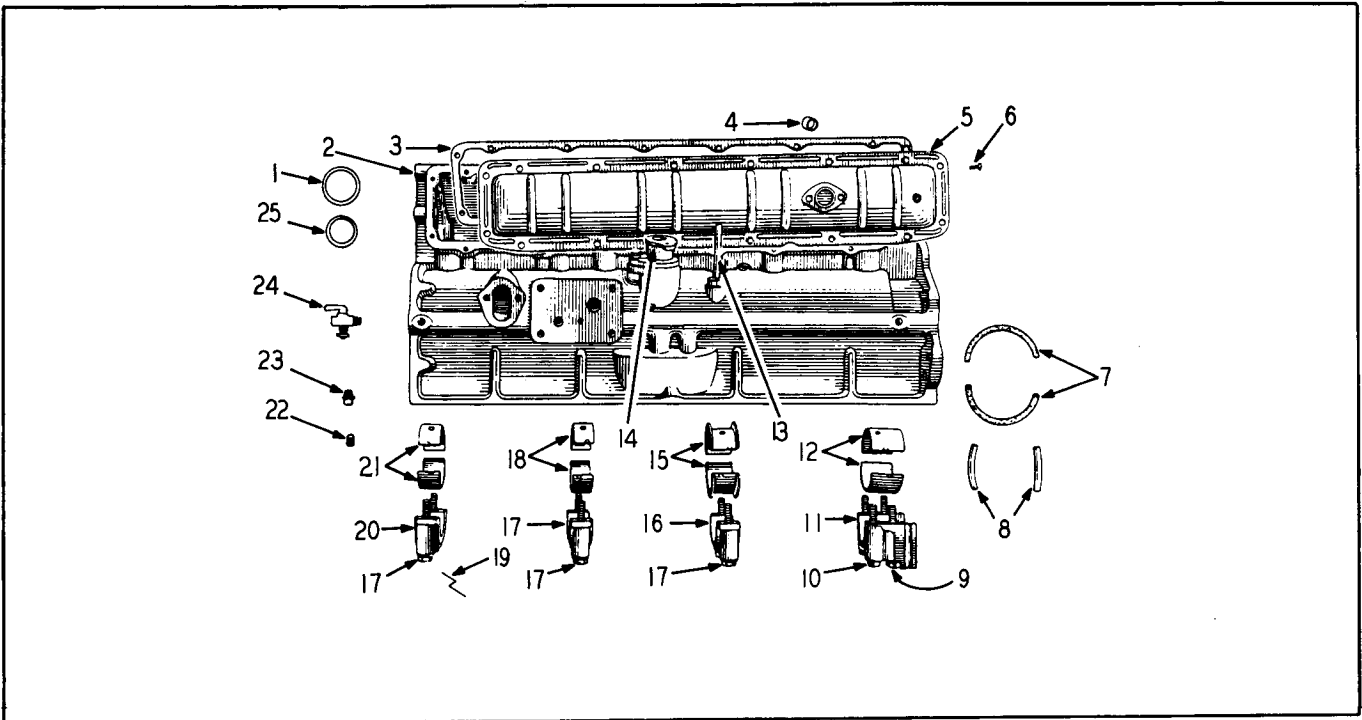


FIG. 10  
CRANKCASE, BEARINGS & RELATED PARTS

ITEM NO.	PART NO.	PART NAME	Qty.
	318058R91	GASKET SET, Crankcase ..... (Composed of)	
		1 GASKET 35654HA      1 GASKET 71762R1	
		1 GASKET 39783H      1 GASKET 369984R1	
		1 GASKET 69676R1      1 GASKET 128868H	
		1 GASKET 69762R2      1 OIL SEAL 374006R1	
		1 GASKET 69764R1      2 PACKING 863756R1	
	316277R11	CRANKCASE ASSEMBLY .....	1
1	70129R1	PLUG, Expansion .....	2
2		CRANKCASE (NSS) Order #316277R11 .....	1
3	369982R1	GASKET .....	1
4	71327R1	BEARING, Sleeve .....	2
5	69734R11	COVER PLATE, Access .....	1
6	375612R91	SCREW .....	16
7	374006R91	SEAL, Oil-Rear Crankcase .....	1
8	863756R1	PACKING MATERIAL .....	2
9	70133R1	BOLT .....	2
	58516H	WASHER .....	10
10	108118R1	BOLT .....	8
11	70106R1	CAP, Rear Bearing .....	1
12	233253R91	BEARING, Rear Std. 2 Halves .....	1
	233257R91	BEARING, Rear .002 U/S 2 Halves .....	1
	233261R91	BEARING, Rear .010 U/S 2 Halves .....	1
	233265R91	BEARING, Rear .020 U/S 2 Halves .....	1
	233269R91	BEARING, Rear .030 U/S 2 Halves .....	1
	233273R91	BEARING, Rear .060 U/S 2 Halves .....	1
(Continued on following page)			

CRANKCASE, BEARINGS & RELATED PARTS (Continued)

ITEM NO.	PART NO.	PART NAME	Qty.
13	70130R1	TUBE, Oil Gauge	1
	61403HC	BUSHING, Camshaft Front	1
	71326R1	BUSHING, Camshaft Inter. Front	1
	70131R1	BUSHING, Camshaft Inter. Rear	1
	70132R1	BUSHING, Camshaft Rear	1
	98375H	PLUG, Oil Gauge Hole - Crankcase	1
14	171591R1	ADAPTER, Distributor	1
15	233252R91	BEARING, Third Std. 2 Halves	1
	233256R91	BEARING, Third .002 U/S 2 Halves	1
	233260R91	BEARING, Third .010 U/S 2 Halves	1
	233264R91	BEARING, Third .020 U/S 2 Halves	1
	233268R91	BEARING, Third .030 U/S 2 Halves	1
	233272R91	BEARING, Third .060 U/S 2 Halves	1
16	70105R2	CAP, Third Bearing	1
17	70104R2	CAP, Second Bearing	1
18	233251R91	BEARING, Second Std. 2 Halves	1
	233255R91	BEARING, Second .002 U/S 2 Halves	1
	233259R91	BEARING, Second .010 U/S 2 Halves	1
	233263R91	BEARING, Second .020 U/S 2 Halves	1
	233266R91	BEARING, Second .030 U/S 2 Halves	1
	233271R91	BEARING, Second .060 U/S 2 Halves	1
19	16130D	WIRE	4
20	70103R2	CAP, Front Bearing	1
21	233250R91	BEARING, First Std. 2 Halves	1
	233254R91	BEARING, First .002 U/S 2 Halves	1
	233258R91	BEARING, First .010 U/S 2 Halves	1
	233262R91	BEARING, First .020 U/S 2 Halves	1
	233266R91	BEARING, First .030 U/S 2 Halves	1
	233270R91	BEARING, First .060 U/S 2 Halves	1
	233274R91	BEARING SET, Std. (Includes 4 CKSHFT Brgs.)	1
	233275R91	BEARING SET, .002 U/S (Includes 4 CKSHFT Brgs.)	1
	233276R91	BEARING SET, .010 U/S (Includes 4 CKSHFT Brgs.)	1
	233277R91	BEARING SET, .020 U/S (Includes 4 CKSHFT Brgs.)	1
	233278R91	BEARING SET, .030 U/S (Includes 4 CKSHFT Brgs.)	1
	233279R91	BEARING SET, .060 U/S (Includes 4 CKSHFT Brgs.)	1
22	126045	PLUG, Pipe, CTSK. 3/8"	2
23	103865	PLUG, Pipe, SQ. HD. 1/8"	2
24	103647	COCK, Drain	1
25	70128R1	PLUG, Expansion	6
	444854	PLUG, Drain, 1/8" Socket	1
	98375H	PLUG, Oil Gauge Hole	1
	1001735R1	DECAL, Valve Adjusting	1
	368429R21	BREATHER, Pipe	1
	369981R1	GASKET	1
	374587R91	SCREW, W/Washer	2
	1013049R1	TAG, Preparing for Engineering for Storage	1
	1013052R1	TAG, General Instructions	1
	2751144R1	DECAL, Oil Filter Instructions	1
	2750243R2	DECAL, Engine Shut-off Instructions (English)	1
	2750257R2	DECAL, Engine Shut-off Instructions (Spanish)	1
	2750258R1	DECAL, Engine Shut-off Instructions (French)	1

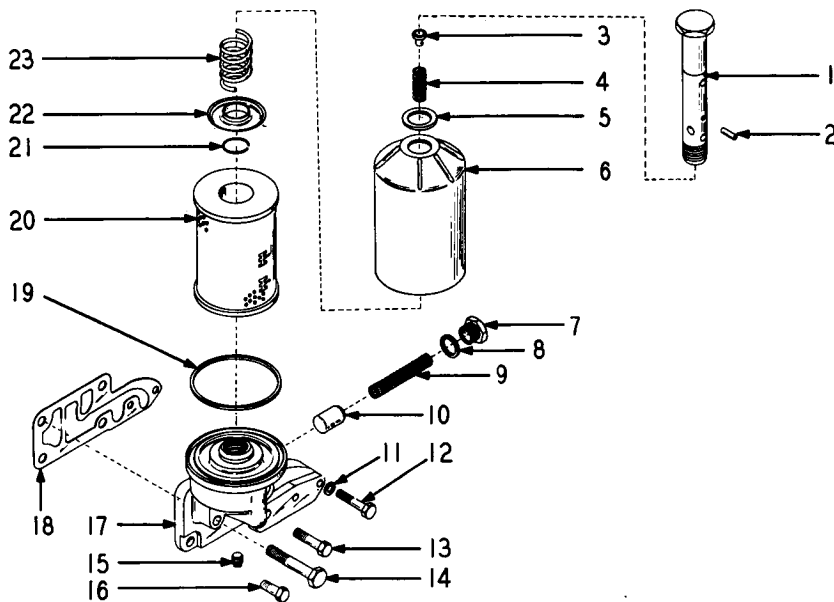


Fig. 11  
LUBRICATING OIL FILTER

ITEM NO.	PART NO.	PART NAME	Qty.
	323871R91	FILTER ASSEMBLY, Oil - Includes Items 1 thru 10, Items 19 thru 23, Base Assembly #371237R11 and Item 15	1
1	304005R91	TUBE, Includes Items 2, 3 & 4	1
2	17141R1	PIN	1
3	304008R1	VALVE	1
4	304009R1	SPRING	1
5	320273R91	PACKAGE, Gasket - Center Tube - Includes #103364 Pin, Cotter	1
	103364	PIN, Cotter, 1/16 x 1-1/4"	1
6	303998R1	CASE, Filter	1
7	61263VA	PLUG, Relief Valve	1
8	3405H	GASKET, Plug	1
9	49946HA	SPRING	1
10	61261VA	VALVE, Relief	1
11	103320	WASHER, Lock	2
12	179823	SCREW, Cap	2
13	179864	SCREW, Cap	1
14	179869	SCREW, Cap	1
15	103878	PLUG, Pipe	1
16	179858	SCREW, Cap	2
	371237R11	BASE ASSEMBLY - Includes Items 7, 8, 9, 10, 15 and 17	1
17		BASE, Order #371237R11	1
18	371238R1	GASKET, Filter Base	1
19	304854R1	GASKET, Filter Case - Part of Item 20	1
20	323827R91	ELEMENT PACKAGE - Includes Item 19	1
21	310930R1	"O" RING	1
22	304010R1	WASHER, Retaining	1
23	304011R1	SPRING	1
	2751144R1	TRANSFER, Oil Filter (English)	1

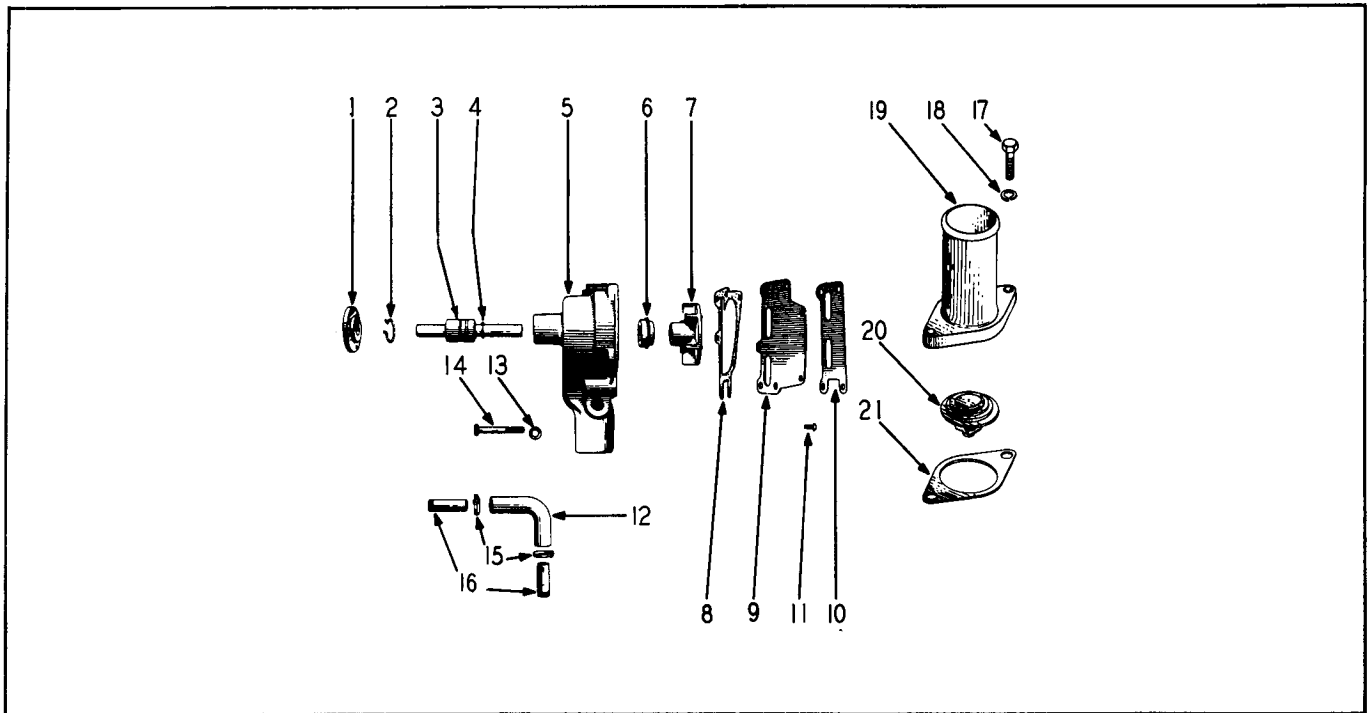
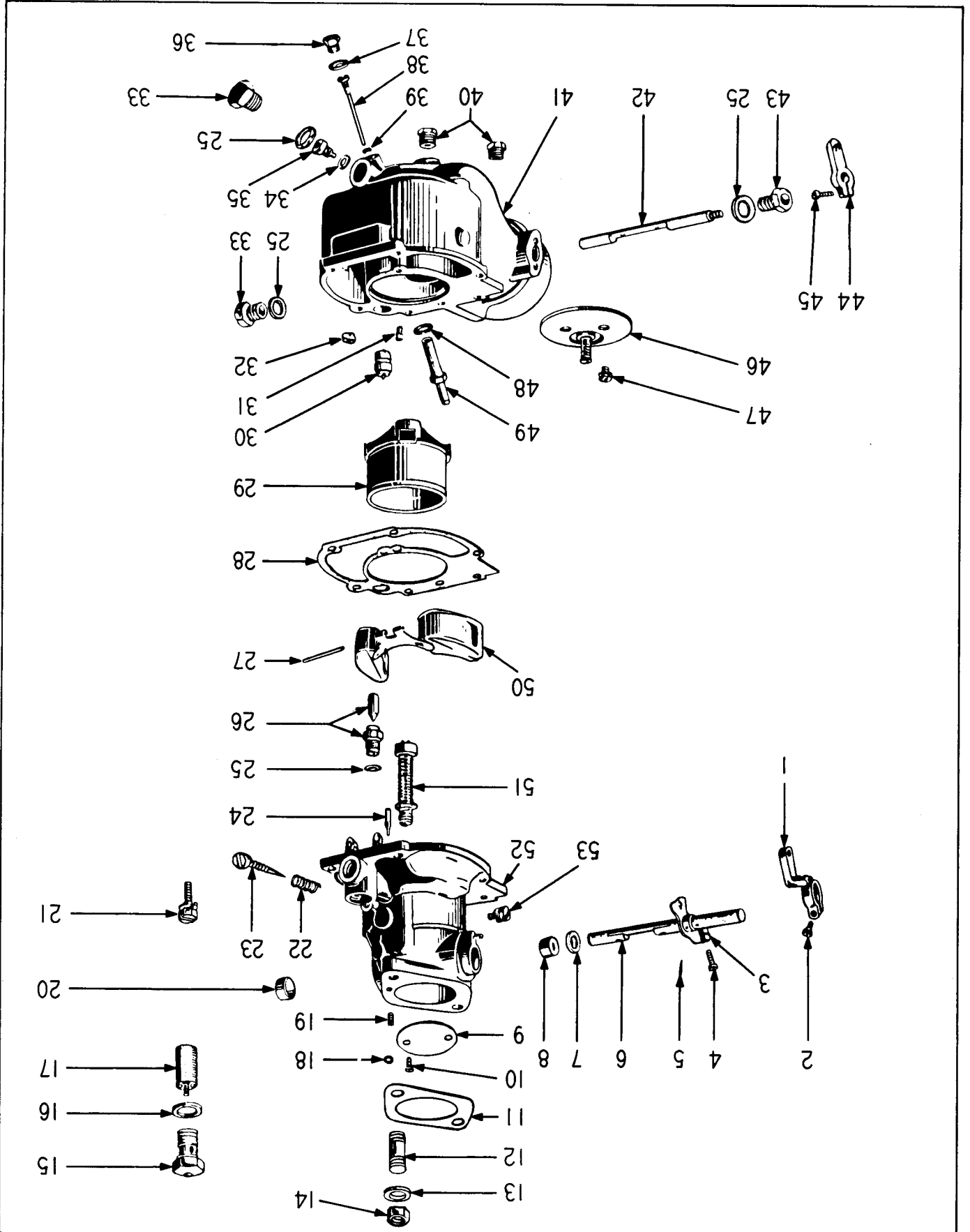


Fig. 12  
WATER PUMP, THERMOSTAT, FAN & RELATED PARTS

ITEM NO.	PART NO.	PART NAME	Qty.
	170027R91	PUMP, Water - Includes Items marked *	1
* 1	69673R11	HUB	1
* 2	139085R1	RING, Retaining	1
* 3	78743R91	SHAFT ASSEMBLY, Includes Items 3 and 4	1
3	102068H	BEARING, Ball	1
4	71351R1	SLINGER	1
* 5		BODY, NSS - Order 170027R91	1
6	70585R91	SEAL, Plain - Optional with 73296R92	1
* 6	73296R92	SEAL, Plain - Optional with 70585R91	1
* 7	69670R1	IMPELLER, Fan	1
* 8	69674R1	GASKET	1
* 9	69675R1	PLATE	1
10	69676R1	GASKET	1
* 11	124060	SCREW	3
12	169192R1	ELBOW, Formed Rubber	1
13	103321	WASHER, Lock, 3/8"	4
14	179849	SCREW, Cap, 3/8 NC x 2-1/2"	4
15	240369R91	CLAMP, Hose	2
16	169193R1	NIPPLE, Pipe	2
17	179819	BOLT, 5/16 NC x 1-1/8"	2
18	103320	WASHER, Lock, 5/16"	2
19	164430R1	OUTLET, Water	1
20	216906R91	THERMOSTAT, Flow Control	1
	78984R91	KIT, Water Pump	1
	318362R91	PULLEY, Fan & W/Pump	1
	103319	WASHER, Lock, 1/4"	4
	181321	BOLT, 1/4 - 28 x 1-3/4"	4
	369289R1	SPACER, Fan	1
	103647	VALVE, Drain	1
	274705R1	BELT, Fan	1
	268098R91	FAN, Blower	1
	306355R91	FAN, Blower (Optional)	1



Fig. 13  
CARBURETOR



CARBURETOR

ITEM NO.	ZENITH PART NO.	PART NAME	Qty.
		<i>357 670R 94</i>	
	12537	CARBURETOR (Hough 155827H3) .....	1
*	164460H2	REPAIR KIT (Includes Items 7, 8, 10, 11, 16, 18, 21, 23, 24, 25 thru 28, 30 thru 32, 34, 35, 37 thru 39, 47, 48, 51 and 53) .....	AR
	C-181-74	GASKET SET (Includes Items 25, 28, 34, 37, 39 and 48) .....	AR
1	C24-93M-IX3	LEVER ASSEMBLY (Includes Item 2) .....	1
2	T8S10-9	BOLT, Machine .....	1
3	CR28-28	LEVER ASSEMBLY (Includes Item 4) .....	1
4	T8S8-10	BOLT .....	1
5	CT63-4	PIN, Taper .....	1
6	C23-642	SHAFT, Throttle .....	1
7	C131-33	WASHER, Flat .....	1
8	CT48-10	SEAL .....	1
9	C21-78	PLATE, Throttle .....	1
10	T315B5-5	SCREW .....	2
11	C141-4-1	GASKET .....	1
12 #	256336R1	STUD, Plain .....	2
13 #	103321	WASHER, Lock .....	2
14 #	103026	NUT .....	2
15	C138-46	FILTER, Head .....	1
16	T56-3	WASHER .....	1
17	F2-IT5	STRAINER ELEMENT, Sediment .....	1
18		WASHER, Lock .....	2
19	C138-38	SETSCREW, Vacuum Channel .....	1
20	C131-2	PLUG, Throttle Shaft .....	1
21	T311S12-12	SCREW .....	4
22	CHI-17	SPRING .....	1
23	C46-38	NEEDLE, Idle Adjusting .....	1
24	C55-7-16	JET, Idle .....	1
25	T56-23	WASHER .....	1
26	C81-1-40	VALVE & SEAT (2 parts) .....	1
27	C120-15	AXLE, Float .....	1
28	C142-21	GASKET .....	1
29	B38-34-27	VENTURI .....	1
30	C97-15-10	VALVE, Power Jet .....	1
31	C77-18-30	JET, Well Vent .....	1
32	CR41-3	VALVE, Pump Check .....	1
33	C138-24	PLUG .....	2
34	T56-24	WASHER .....	1
35	C52-6-26	JET, Main .....	1
36	C138-53	PLUG .....	1
37	T56-12	WASHER .....	1
38	C51-20-18	JET, Accelerator .....	1
39	T56-4	GASKET, Jet .....	1
40	CT91-3	PLUG, Pipe .....	2
41	B3-62-A	BOWL, Fuel .....	1
42	C105-138	SHAFT, Choke .....	1
43	C140-7	SCREW .....	1
44	C24-7BVX2	LEVER ASSEMBLY (Includes Item 45) .....	1
45	T8S10-9	BOLT, Machine .....	1
46	C101-22	PLATE, Choke .....	1
47	T315B6-4	SCREW .....	2
48	T56-48	WASHER .....	1
49	C66-48-80	JET, Main Discharge .....	1
50	C85-26	FLOAT .....	1
51	C36-61X1	PUMP .....	1
52		BODY, Throttle NSS .....	1
53	T301S8-6	SCREW .....	1
#	23974D	SCREW, Vacuum By-pass (Assembled in Carburetor) .....	1
#	66453H	GASKET, Carburetor .....	3
#	67264H	INSULATOR, Carburetor .....	1
#	266342R11	CROSS FLANGE, Adapter .....	1
#	103321	WASHER, Lock, 3/8" .....	2
#	179319	NUT, 3/8 - 24 .....	2
		* - Hough Part Numbers - # - I. H. Part Numbers	
		NOTE: Numbers in the part number column are Zenith Carburetor part numbers unless otherwise specified.	

FIG. 14  
FUEL PUMP

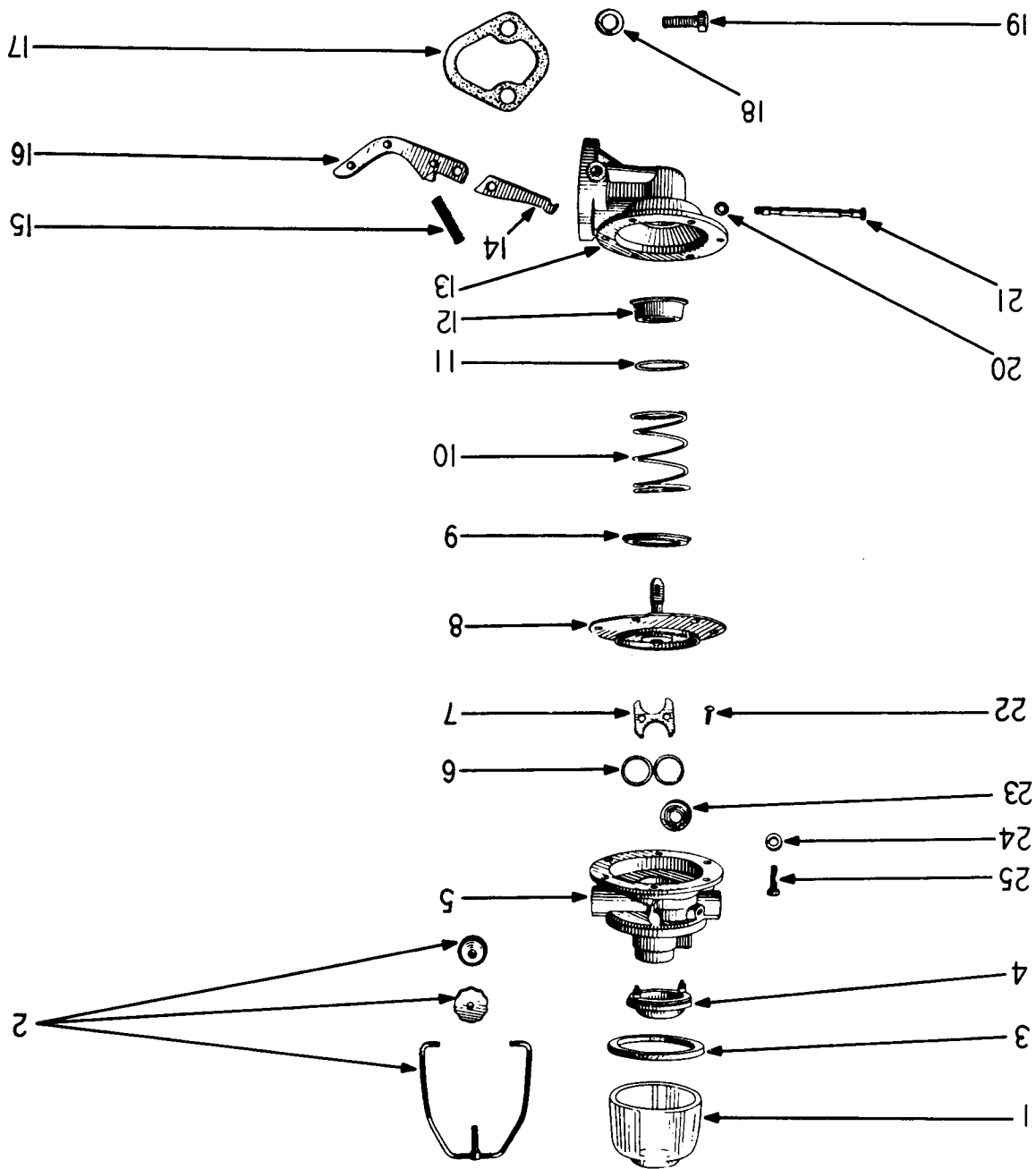


Fig. 14  
FUEL PUMP

ITEM NO.	PART NO.	PART NAME	Qty.
*	155832H1	PUMP ASSEMBLY, Fuel (I. H. #81612R91) For service order Pump #189357H1 shown on following page. ....	1
#	5592396	KIT, Fuel Pump Repair - Includes Items 3, 4, 8, 10, 14, 15, 20, 21 and 23 .....	AR
#	5592395	KIT, Diaphragm Repair - Includes Items 3, 8 and 23 .....	AR
# 1	5590159	BOWL, Sediment .....	1
2		BAIL ASSEMBLY .....	1
# 3	5590039	GASKET .....	1
4		STRAINER ELEMENT .....	1
5		COVER .....	1
6		GASKET .....	1
7		RETAINER, Valve .....	1
8		DIAPHRAGM ASSEMBLY .....	1
9		CAP .....	1
10		SPRING .....	1
11		SEAL .....	1
12		WASHER .....	1
13		BODY .....	1
14		LINK .....	1
15		SPRING .....	1
16		ROCKER ARM .....	1
* 17	155835H1	GASKET .....	1
* 18	WL-15	WASHER, Lock .....	2
* 19	S-2510	SCREW, Cap .....	2
20		WASHER, Flat .....	1
21		PIN, Rocker Arm .....	1
22		SCREW .....	2
23		VALVE & CAGE ASSEMBLY .....	1
24		WASHER, Lock .....	6
25		SCREW .....	6
%	266342R11	CROSS FLANGE ADAPTER .....	1
%	103321	WASHER, Lock, 3/8" .....	2
%	179319	NUT, 3/8 - 24" .....	2
%	276145R2	PIPE, Fuel, Carburetor to Fuel Pump .....	1
%	24847H	ELBOW, Male Pipe .....	2
%	369989R1	NUT, 5/16" Nylon .....	2
%	420364	SCREW (In Fuel Pipe Bracket) .....	1
%	99937R1	BRACKET, Fuel Pipe .....	1
<p>NOTE: Above components without part numbers are not singly recommended for service by supplier. They are shown for identification purposes only. Order kits shown above containing parts desired.</p> <p>* Hough Part Numbers # A. C. Spark Part Numbers % I. H. Part Numbers</p>			

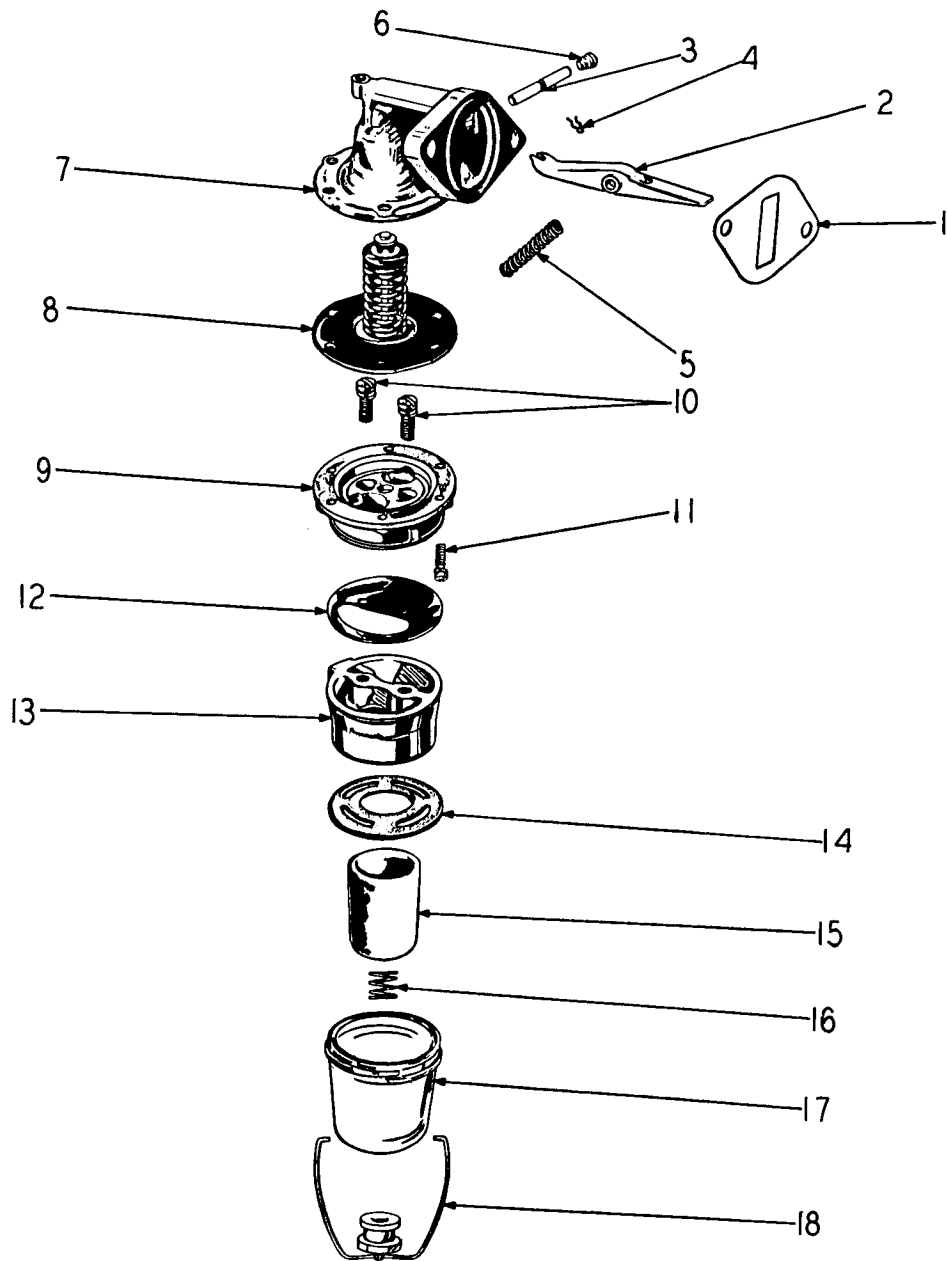


Fig. 14A  
FUEL PUMP



FUEL PUMP

ITEM NO.	Carter Carb. PART NO.	PART NAME	Qty.
*	189357H1	PUMP ASSEMBLY, Fuel - Includes Items 1 thru 18 (I. H. #84838R93) Service Fuel Pump for #155832 shown on Page 19 .....	1
		NOTE: For service components of this unit contact your nearest Carter Carburetor Dealer. The main address is: Carter Carburetor Corporation, St. Louis, Missouri.	
1	M121-134	GASKET, Flange .....	1
2	M177-69	LEVER, Cam .....	1
3	M150-152	PIN, Cam lever .....	1
4	M150A-18	RETAINER, Cam lever pin .....	1
5	M61-294	SPRING, Cam lever return .....	1
6	11B-69	PLUG, Cam lever pin .....	1
7		BODY (Not Serviced Separately).....	1
8	M203-165	DIAPHRAGM ASSEMBLY .....	1
9	M80-231S	VALVE HOUSING ASSEMBLY .....	1
10	M101-265S	SCREW & LOCKWASHER ASSEMBLY .....	2
11	M101-303S	SCREW & LOCKWASHER ASSEMBLY .....	6
12	M203-38	DIAPHRAGM, Air dome .....	1
13	M118-140	COVER, Valve Housing & Filter .....	1
14	F23A-20	GASKET, Bowl Ring .....	1
15	F30-60	ELEMENT, Ceramic Filter .....	1
16	F61-621	SPRING, Filter .....	1
17	F23-40	BOWL, Glass .....	1
18	F63-146S	RETAINER & SCREW ASSEMBLY .....	1
#	179820	BOLT, 5/16 - 18 x 1-1/4" .....	2
#	103320	WASHER, Lock, 5/16" .....	2
#	128868-H	GASKET, Fuel Pump Mounting .....	1
		} Fuel Pump Mounting	
		# I. H. Part Numbers	
		* Hough Part Number	

GOVERNOR & ATTACHING PARTS  
& AIR COMPRESSOR DRIVE PULLEY & MOUNTING

ITEM NO.	PART NO.	PART NAME	Qty.
*	141639HA	GOVERNOR, (Order Kit - Hough #190163H1 shown in H-30B	
	92388H	Parts Manual) .....	1
	176819H1	GASKET, Governor .....	1
	179839	SEAL & WIRE, Governor .....	1
	103321	PULLEY, Drive, Air Compressor .....	1
		BOLT, 3/8 - 16 x 1" .....	4
		WASHER, Lock, 3/8" .....	4
		* Hough Part Number	

---

**ELECTRICAL SYSTEM**

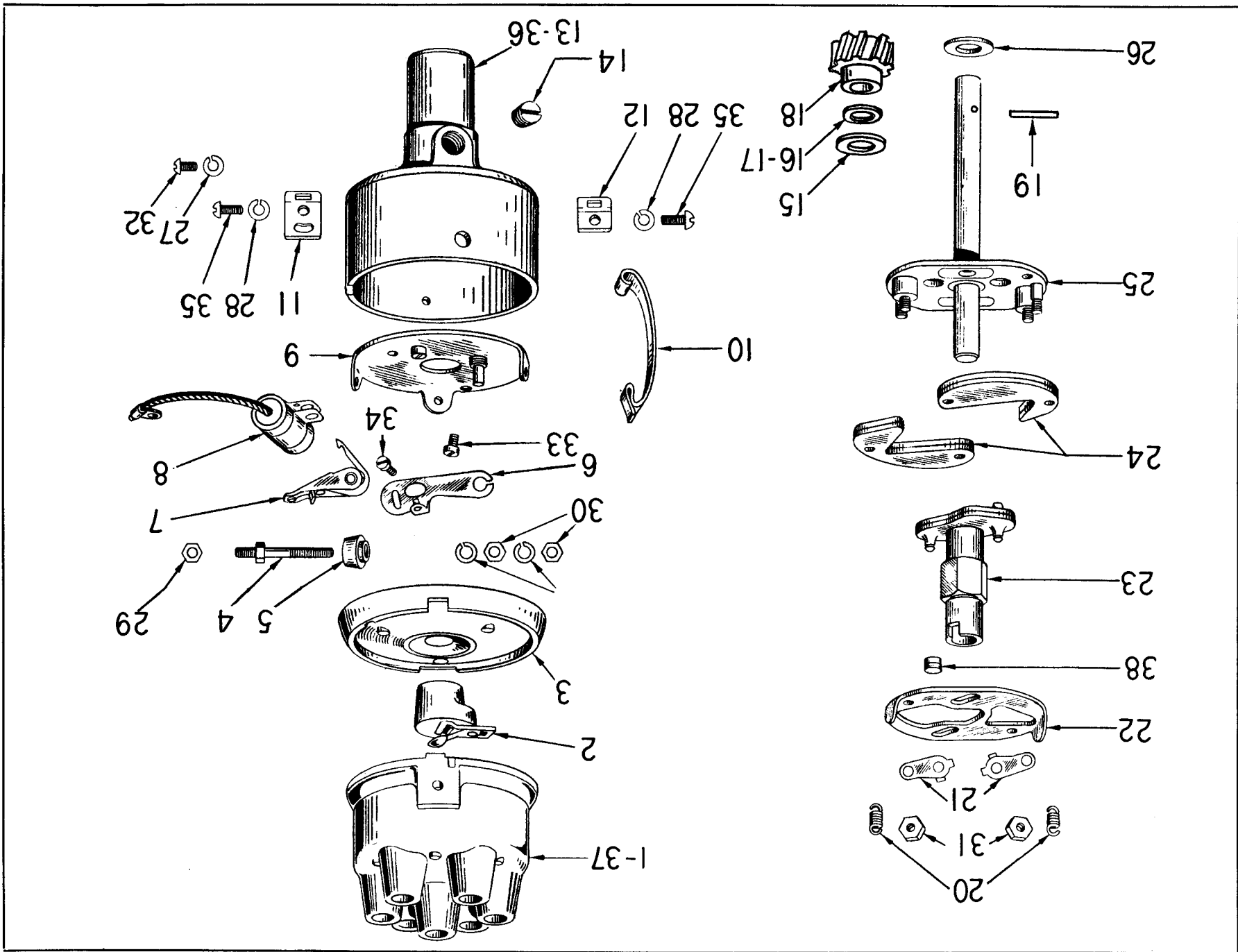


Fig. 15  
DISTRIBUTOR

Fig. 15  
DISTRIBUTOR, SPARK PLUGS & CABLES

ITEM NO.	Delco-Remy PART NO.	PART NAME	Qty.
		NOTE: Service components for this unit should be obtained from a Delco-Remy Dealer. The Frank G. Hough Co. will supply a complete unit only.	
	1112437	DISTRIBUTOR (Hough #186041H1) (I. H. #321288R91) Replaced #1112408	
1	1931512	CAP	1
2	1924245	ROTOR	1
3	1945388	COVER, Housing	1
4	1916806	SCREW OR STUD, Terminal	1
5	1916805	BUSHING (Inside)	1
5	1914142	BUSHING (Outside)	1
6	1855720	CONTACT SET	1
7	813238	LEVER, Breaker	1
8	1869704	CONDENSER	1
9	1847643	PLATE, Breaker	1
10	1871838	SPRING, Cap	2
11-12	1847289	SUPPORT, Cap Spring	2
13	1938136	HOUSING	1
14	125947	PLUG, Pipe	1
15	811912	WASHER, Space	1
16	810074	WASHER, Shim .005 Thk.	AR
17	810078	WASHER, Shim .010 Thk.	AR
18	1952113	COLLAR, Coupling or Gear	1
19	1952272	PIN	1
20	1903101	SPRING, Weight	2
21	1885558	WASHER, Lock	2
22	1885557	CUP OR PLATE, Weight hold down	1
23	1938135	CAM ASSEMBLY	1
24	1880902	WEIGHT	2
25	1955562	SHAFT, Main	1
26	811912	WASHER, Space - Under Weight Plate	1
27	121841	WASHER, Lock - Breaker Plate Support Screw	1
28	121841	WASHER, Lock - Spring Support	2
	1904376	WASHER, Lock - Terminal Stud	AR
29	817363	NUT, Terminal Stud (Inside)	1
30	120622	NUT, Terminal Stud (Outside)	2
31	1923540	NUT, Weight Hold down	2
32	121749	SCREW, Breaker Plate Support	1
33	131949	SCREW, Condenser Attaching	1
34	816784	SCREW, Contact Attaching	1
35	121832	SCREW, Dist. Cap Spring Support	2
36	1909003	BUSHING, Dist. Housing	1
37	1938193	BUTTON, Carbon - In Cap	1
38	819639	FELT, Wick - In Cam	1
	1914144	CLIP, Lock - Term. Stud (Outside)	1
*	321290R91	ARM, Distributor Clamp	1
*	16559R1	WASHER, Flat	1
*	120380	WASHER, Lock	1
*	180018	SCREW, Cap	1
*	583474R1	"O" RING, Distributor Mounting	1
*	77271R91	PLUG, Spark W/Gasket 103225H (AC-C45)	6
*	77274R91	PLUG, Spark W/Gasket 103225H (Auto-Lite AN-7)	6
*	646117R91	PLUG, Spark W/Gasket 103225H (Champion J-8)	6
*	66711R92	CABLE, Distributor to Coil (Hi-Tension)	1
*	69700R91	CABLE, Distributor to Coil (Lo-Tension)	1
*	265584R91	CABLE, Coil to Resistor	1
*	179852	BOLT, 7/16 - 14 x 1/2" } Assemble in left front of the	3
*	116104	WASHER, Flat (Copper) } Cylinder Head	3
*	967545R91	RESISTOR, Ignition Coil	1
*	165518R91	COIL & CLAMP, Ignition	1
*	179814	BOLT, 5/16 - 18 x 5/8"	2
*	103320	WASHER, Lock, 5/16"	2
*	103340	WASHER, Flat, 11/32"	2

(Continued on following page)



Fig. 15  
 DISTRIBUTOR, SPARK PLUGS & CABLES (Continued)

ITEM NO.	PART NO.	PART NAME	Qty.
#	312354R91	CABLE, Spark Plug (1 & 6) .....	2
#	318056R91	CABLE, Spark Plug (3 & 4) .....	2
#	266263R91	CABLE, Spark Plug (2 & 5) .....	2
#	324460R1	RETAINER, Spark Plug Wire .....	2
# I. H. Part Numbers			

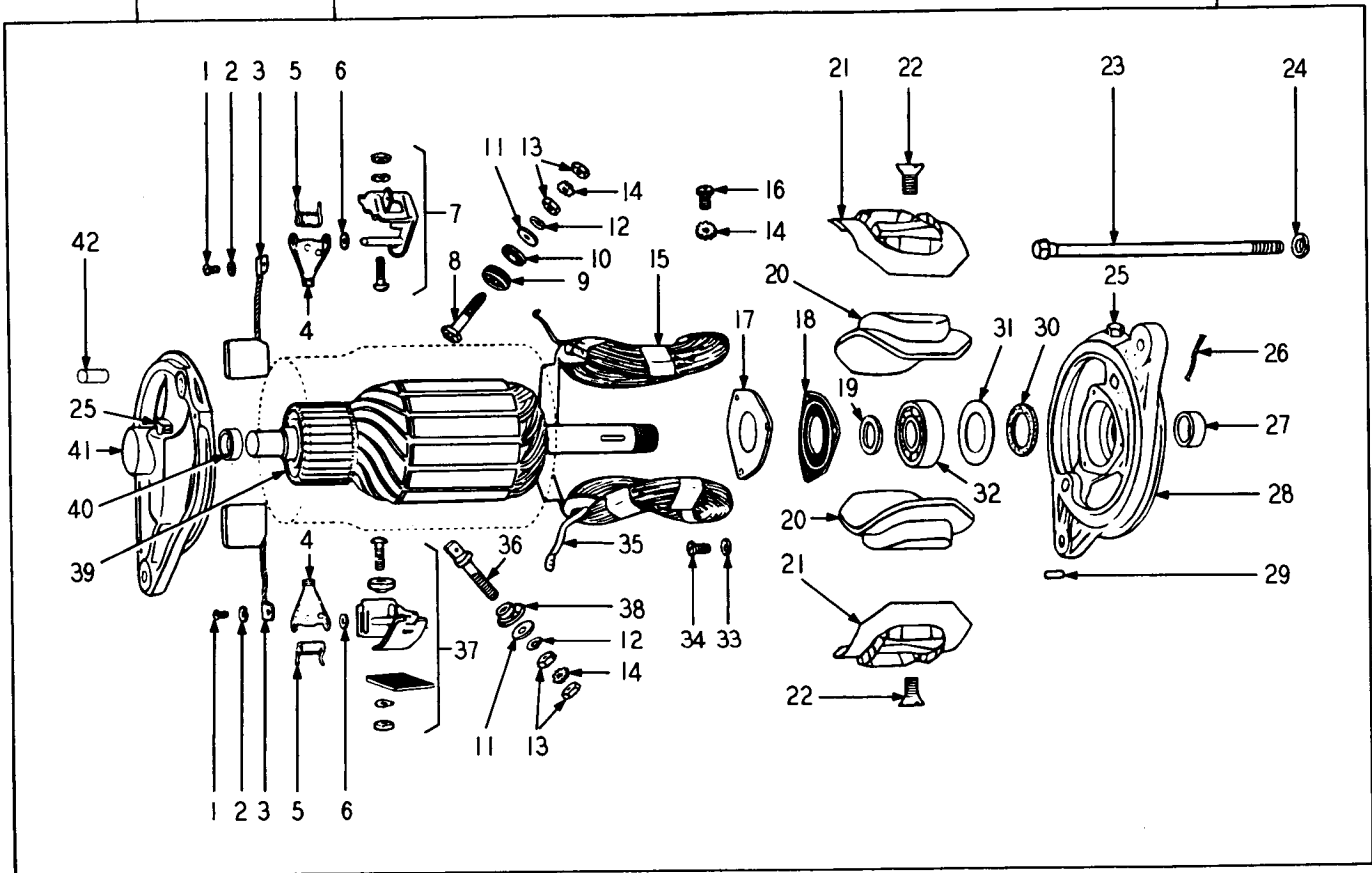


Fig. 16  
 GENERATOR

Fig. 16  
GENERATOR

ITEM NO.	PART NO.	PART NAME	Qty.
		NOTE: Service components of this unit should be obtained from a Delco-Remy Dealer. The Frank G. Hough Co. will fill orders for a complete unit, not service parts.	
	1102059	GENERATOR (Hough #148014H1) (I. H. #305107R91) .....	1
1	132688	SCREW .....	2
2	1904377	WASHER, Lock .....	2
3	1932506	BRUSH, Contact .....	2
4	1878183	ARM, Brush .....	2
5	1916324	SPRING .....	2
6	1904368	WASHER, Flat .....	2
7	1922288	HOLDER, Brush (Ground) .....	1
8	1921860	TERMINAL, Stud, "F" Terminal .....	1
9	1885090	INSULATOR, Bushing, "F" Terminal .....	1
10	1858753	WASHER .....	1
11	1881409	WASHER, Flat .....	2
12	1904661	WASHER, Lock .....	2
13	121743	NUT .....	4
14	1904661	WASHER, Lock .....	3
15	1922701	WINDING, Field .....	1
16	225577	SCREW .....	1
17	1911008	PLATE, Retaining, Bearing .....	1
18	1912008	GASKET, Bearing, Retaining Plate .....	1
19	809945	WASHER, Flat .....	1
20	1912725	POLE PIECE, Magnetic .....	2
21	1912073	INSULATOR, Plate .....	2
22	1843646	SCREW .....	2
23	809763	BOLT .....	2
24	120638	WASHER, Lock .....	2
25	1880641	CUP, Oil .....	2
26	823551	WICK, Oil .....	1
27	1858603	SPACER, Sleeve .....	1
28	1871693	END BELL .....	1
29	809593	PIN .....	1
30	809961	WASHER .....	1
31	819104	RETAINER, Packing .....	1
32	907503	BEARING, Ball .....	1
33	1880781	WASHER, Lock .....	3
34	1904370	SCREW .....	3
35	200382	CLIP, Electrical .....	2
36	1921369	TERMINAL, Stud, "A" Terminal .....	1
37	1922289	HOLDER, Brush .....	1
38	1921362	INSULATOR, Bushing "A" Terminal .....	1
39	1925210	ARMATURE .....	1
40	954736	BEARING, Ball .....	1
41	1939857	END BELL .....	1
42	809062	PIN .....	1
#	85089R2	STRAP, Adjustment, Generator .....	1
	1888439	WASHER, Lock, Strap .....	1
	806915	NUT .....	1
	124545	KEY, Generator Shaft .....	1
	1866400	FAN, Generator (Hough #112681H1) .....	1
	1911985	PULLEY (Hough #155852H1) .....	1
*	165910H1	BRACKET, Generator .....	1
*	S-278	CAPSCREW .....	2
*	WL-17	WASHER, Lock .....	2
#	179816	BOLT, 5/16 - 18 x 3/4" .....	1
#	173127	WASHER, Lock, 5/16" .....	1
#	Q-399	WASHER, Flat, 11/32" .....	1

GENERATOR (Continued)

ITEM NO.	PART NO.	PART NAME	Qty.
*	S-257	CAPSCREW .....	1
*	WF-35	WASHER, Flat .....	1
*	WL-15	WASHER, Lock .....	1
*	S-1510	CAPSCREW .....	2
*	WL-15	WASHER, Lock .....	2
*	H - 15	NUT .....	2
#	265584R91	CABLE, Coil to Resistor (I. H.) .....	1
	1001071R2	DECAL, Generator Warning (English) .....	1
	1001072R2	DECAL, Generator Warning (Spanish) .....	1
	1001073R2	DECAL, Generator Warning (French) .....	1
		* HOUGH PART NUMBERS	
		# INTERNATIONAL HARVESTER NUMBERS	

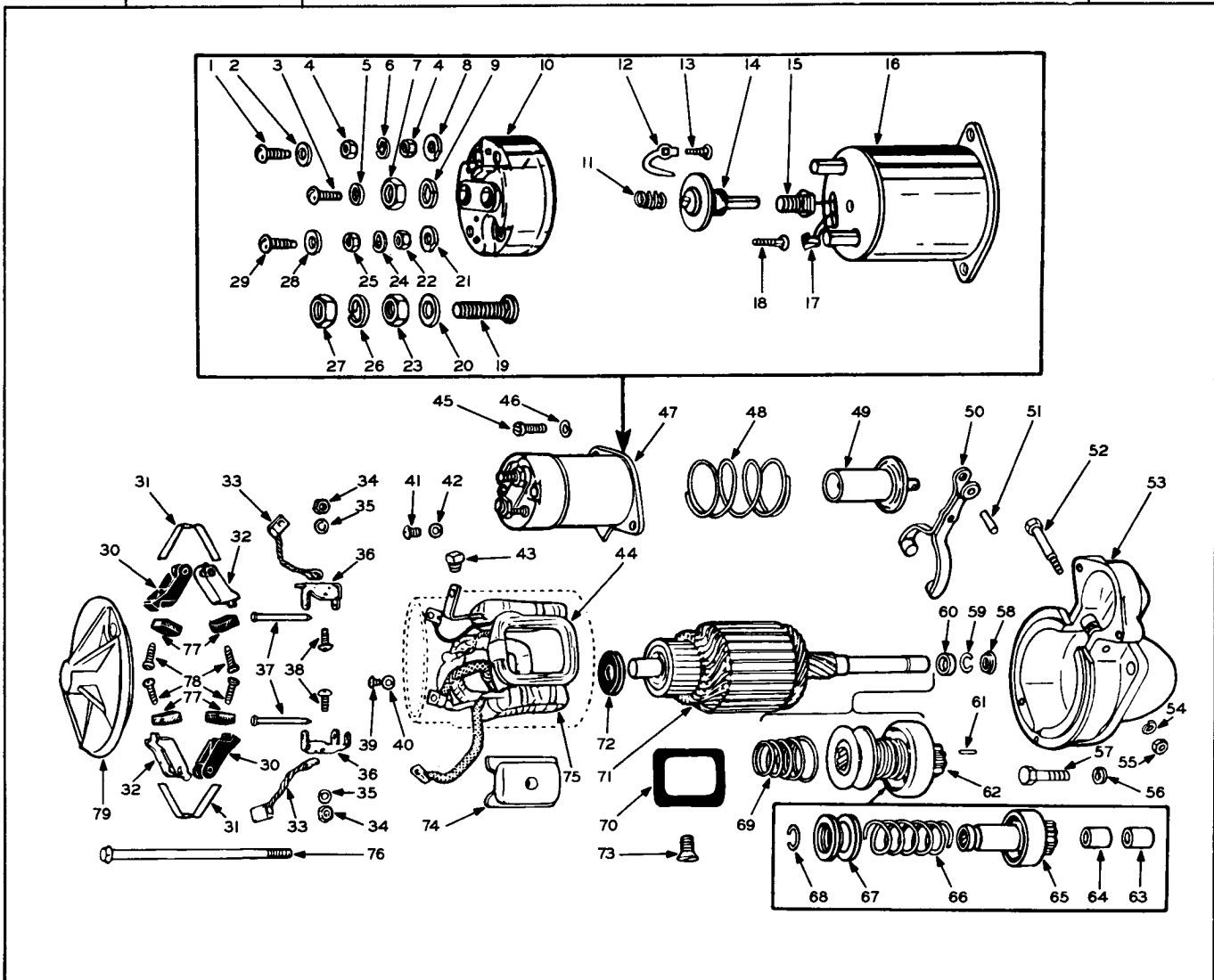


FIG. 17  
STARTING MOTOR

Fig. 17  
STARTING MOTOR

ITEM NO.	PART NO.	PART NAME	Qty.
		NOTE: Components of unit shown in list should be obtained from a Delco-Remy Dealer. The Frank G. Hough Co. will supply a complete unit, not its components.	
	1107679	STARTER, Engine, Electrical (Includes all items except 56 & 57) (Hough #155854H1) (I. H. #165477R91) .....	1
1	132903	SCREW .....	1
2	1923935	INSULATOR, Washer .....	1
3	132908	SCREW .....	1
4	120614	NUT .....	2
5	121801	WASHER, Lock .....	1
6	1202171	WASHER, Lock .....	1
7	426096	NUT .....	1
8	1923935	INSULATOR, Washer .....	1
9	1927345	INSULATOR, Washer .....	1
10	1935643	COVER, Switch .....	1
11	1853342	SPRING .....	1
12	1935645	CLIP, Electrical .....	1
13	1935644	TERMINAL, Stud .....	1
14	1932243	CONTACT, Electrical .....	1
15	1932242	TERMINAL, Stud .....	1
16		HOUSING, Switch .....	1
17	1937381	CLIP, Electrical .....	1
18	1837533	TERMINAL, Stud .....	1
19	1927344	TERMINAL, Stud .....	1
20	1927345	INSULATOR, Washer .....	1
21	1926969	INSULATOR, Washer .....	1
22	120622	NUT .....	2
23	805258	NUT .....	1
24	120217	WASHER, Lock .....	1
25	120614	NUT .....	1
26	121841	WASHER, Lock .....	1
27	805258	NUT .....	1
28	1923935	INSULATOR, Washer .....	1
29	132903	SCREW .....	1
30	1926618	HOLDER, Electrical Contact Brush (Insulated) .....	2
31	1926622	SPRING, Brush .....	2
32	1926617	HOLDER, Electrical Contact Brush (Ground) .....	2
	1928015	SUPPORT ASSEMBLY (Includes Items 33 thru 38) .....	1
33	1926605	LEAD, Brush (Ground) .....	2
34	120361	NUT .....	4
35	120217	WASHER, Lock .....	4
36		SUPPORT, Brush .....	2
37	1926600	PIN, Support .....	2
38	187463	SCREW .....	4
39	122159	SCREW .....	1
40	121841	WASHER, Lock .....	1
41	132908	SCREW .....	1
42	121801	WASHER, Lock .....	1
43	1935168	GROMMET, Rubber .....	1
44	1935131	WINDING, Motor Field .....	1
45	120628	SCREW .....	2
46	106497	WASHER, Lock .....	2
47	1119936	SOLENOID, Electrical (Includes Items 1 thru 29) .....	1
48	1932208	SPRING .....	1
49	1932200	PLUNGER, Solenoid .....	1
50	1932205	LEVER, Shaft .....	1
51	455106	PIN .....	1

(Continued on following page)

STARTING MOTOR (Continued)

ITEM NO.	PART NO.	PART NAME	Qty.
52	1932197	BOLT, Shoulder	1
	1937984	END BELL, Electrical Rotating Equipment (Includes next 2 items)	1
53		END BELL, Electrical Rotating Equipment	1
	1923907	BUSHING	1
54	120214	WASHER, Lock	1
55	1926640	NUT	1
56 *	WL-18	WASHER, Lock	2
57 *	S-289	SCREW, Cap	2
58	1927850	COLLAR, Shaft	1
59	1927848	RING, Retaining	1
60	1927849	BUSHING, Sleeve	1
61	809953	PIN	1
62	1937975	DRIVE, Engine, Electrical Starter (Includes Items 63 thru 68)	1
63	1924732	BEARING, Sleeve	1
64	1923904	BEARING, Sleeve	1
65		DRIVE, Engine, Electrical Starter	1
66	1932196	SPRING	1
67	1838436	COLLAR, Shaft	1
68	37521	RING, Retaining	1
69	1932209	SPRING	1
70	1927853	INSULATOR, Plate	4
71	1932185	ARMATURE, Motor	1
72	818265	WASHER, Flat	1
73	1843646	SCREW	4
74	1926616	POLE PIECE, Magnetic	4
75	1935128	WINDING, Motor Field	1
76	1926625	BOLT	2
77	1906945	BRUSH, Electrical Contact	4
78	1926648	SCREW	4
79	1928966	END BELL, Electrical Rotating Equipment	1
		HOUSING, Electrical Rotating Equipment	1
#	179883	BOLT, 1/2-13 x 1-1/4"	2
#	103323	WASHER, Lock, 1/2"	2
	120622	NUT, 8-32	1
	121841	WASHER, Lock #8	1
	120614	NUT, 10-32	1
	120217	WASHER, Lock, #10	1
	120377	NUT, 3/8 - 16	1
	120382	WASHER, Lock, 3/8"	1
		* HOUGH PART NUMBERS	
		# I. H. PART NUMBERS	

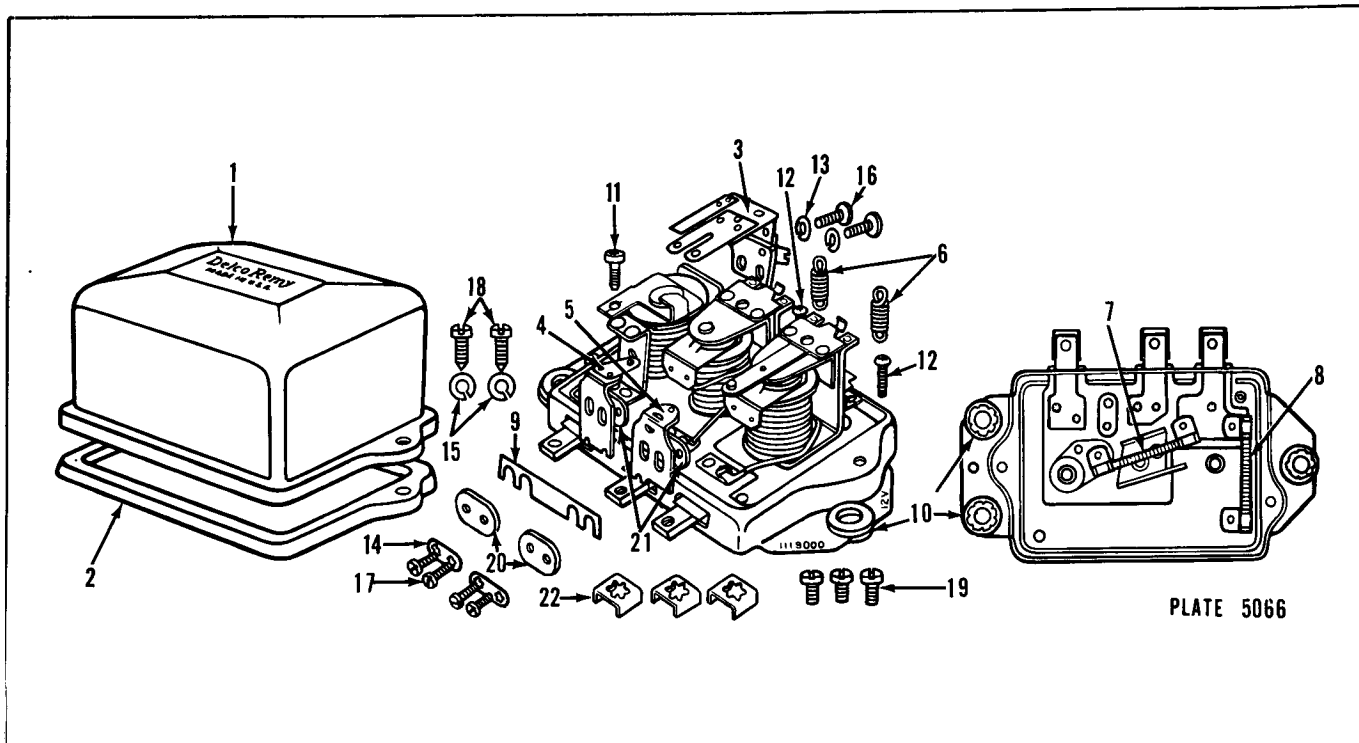


Fig. 18  
 VOLTAGE REGULATOR  
 (Positive Ground - Used on earlier engines)

ITEM NO.	PART NO.	PART NAME	Qty.
	1118839D	REGULATOR, Voltage (Positive Ground, Hough #148018H1) (I. H. #164717R91)	1
1	1931886	COVER	1
2	1931887	GASKET	1
3	1939646	ARMATURE, Relay	1
4	1948328	CONTACT, Current Regulator	1
5	1948328	CONTACT, Voltage Regulator	1
6	1912176	SPRING, Current Regulator	1
	1949142	SPRING, Voltage Regulator	1
7	1910174	RESISTOR, 65 Ohms	1
8	1910176	RESISTOR, 130 Ohms	1
9		NOT USED ON THIS UNIT	
10	1879663	GROMMET	3
11	1912159	SCREW, Adjusting	1
12	1944590	SCREW, Adjusting	2
13		NOT USED ON THIS UNIT	
14	1878505	WASHER, Lock, Contact Attaching	2
15	1938522	WASHER, Lock, Cover Screw	2
16	1924764	SCREW & LOCKWASHER, Armature Attaching	2
17	1878516	SCREW, Contact Attaching	4
18	1943385	SCREW, Cover	2
19	1878502	SCREW, Terminal	3
20	1922599	WASHER, Insul. W/Bushings, Contact	2
21	1878507	WASHER, Insul. Contact Attach.	2
22	1878503	CLAMP, Terminal	3

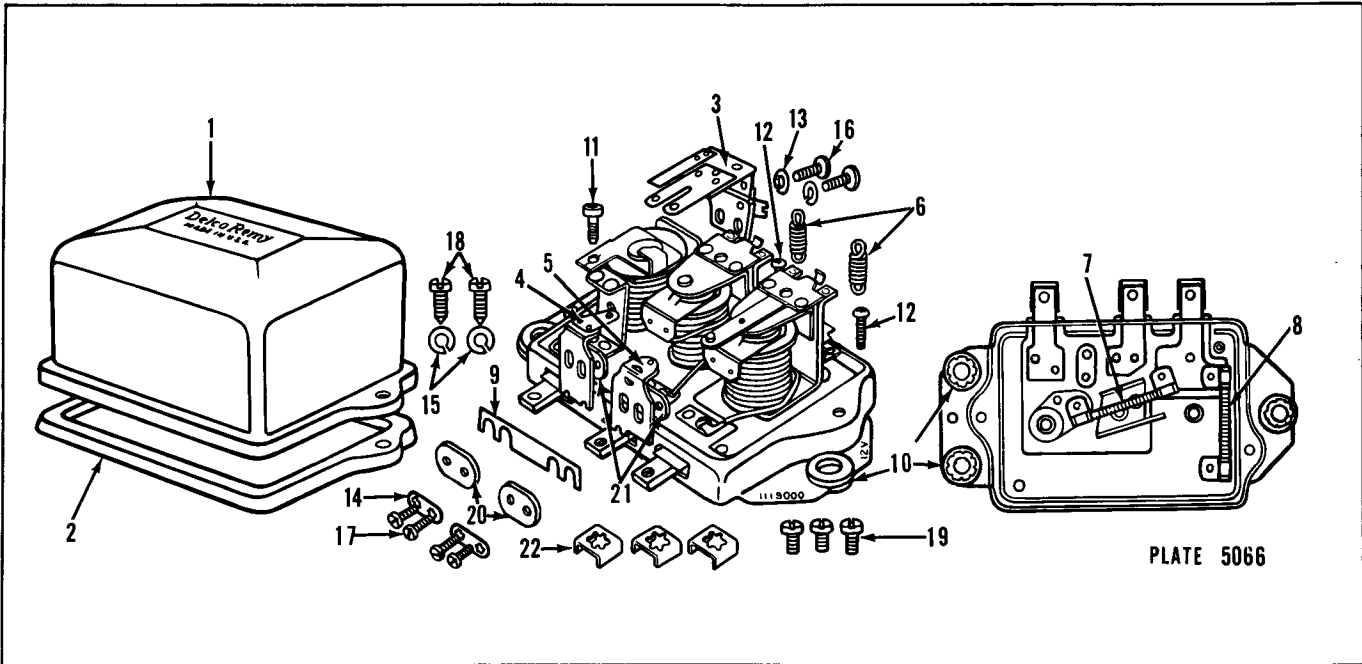


Fig. 19  
VOLTAGE REGULATOR  
(Negative Ground)

ITEM NO.	Delco-Remy PART NO.	PART NAME	Qty.
	1119003E	REGULATOR, Voltage (Negative Ground, Hough #174002H1) (I. H. #164717R91)	1
1	1931886	COVER	1
2	1931887	GASKET, Cover	1
3	1939646	ARMATURE, Relay	1
4	1949136	CONTACT, Current Regulator	1
5	1949136	CONTACT, Voltage Regulator	1
6	1912176	SPRING, Current Regulator	1
6	1949142	SPRING, Voltage Regulator	1
7	1910173	RESISTOR, 40 Ohms	1
8	1910174	RESISTOR, 65 Ohms	1
9		Not Used	1
10	1879663	GROMMET	3
11	1912159	SCREW, Adjusting	1
12	1944590	SCREW, Adjusting	2
13	1904377	LOCKWASHER, Relay Screw	2
14	1878505	LOCKWASHER, Contact Screw	2
15	1938522	WASHER, Cupped, Cover Screw	2
16	1924764	SCREW & LOCKWASHER, Armature Attaching	2
17	1878516	SCREW, Contact Attaching	4
18	1943386	SCREW, Cover	2
19	1914800	SCREW, Terminal	3
20	1922599	WASHER, Insul. W/Bushings	2
21	1878507	WASHER, Insul. Contact Screw	2
22	1878503	CLAMP, Terminal	3
	274577	SCREW, Ground	1
	1855978	CLAMP, Ground Screw	1

NUMERICAL INDEX

PART NO.	PAGE	PART NO.	PAGE	PART NO.	PAGE	PART NO.	PAGE
I. H. Part Numbers		179837	8	69608R1	6	7694R1	5
		179839	20	69670R1	15	76978R1	10
		179841	8	69673R11	15	77271R91	11
		179847	8	69674R1	15		23
		179849	15				
		179852	5				
103025	8		23	69675R1	15	772474R91	23
103026	17			69676R1	12	78743R91	15
103319	7	179858	14	69682R91	11	84482R1	5
103320	15	179864	14	69700R91	23	84484R3	5
103323	28	179869	14	69722R1	5	85089R2	25
103339	7	3990	2	70012R1	9	109544R1	5
103340	7	1769Y	7	70013R1	10	110833R1	5
103364	14	3405H	6	70014R1	9	111024R1	5
103462	10	16025D	14	70015R1	9	112509R1	5
103462	10	16026DB	11	70016R1	9	114869R1	6
103462	10	16026DB	11	70016R1	9	118643HA	5
103467	13	16067DA	5	70103R2	13		
103865	15	16130D	13	70104R2	13		
103865	15	16559R1	23	70105R2	13		
103868	5			70106R1	12	124482R1	3
103878	14	1714R1	14				
103905	6	1714R1	14	70128R1	5	126373R1	5
112011	6	17244R1	9			127507H	3
112011	7	19517D	5			128868H	12
113955	23	23974D	17	70129R1	13		19B
116104	7	24847H	19	70130R1	13	130476R91	11
120214	6	33894V	3	70131R1	13	130476R93	11
120214	6	35619H	5	70132R1	13	133033R1	5
120377	3	35650HA	11	70133R1	12	133757R1	3
120380	23	35647H	6	70259R1	11		
120382	3	35654HA	12	70260R1	11		
124060	15			70261R1	11	139085R1	15
126045	13	39783H	12				
127559	11	41300HA	6	70262R1	11	141639HA	20
136857	7	41333D	5	70425R1	11	141799R41	9
137195	6	49946HA	14	70426R1	7	141801R41	9
143997	6	58516H	5	70427R1	11	141802R41	9
173127	25	61261VA	12	71327R1	15	141803R41	9
173127	17	61263VA	14	71328R1	13	141804R94	10
179814	19	61403HC	13	71329R1	12	141805R94	10
	7	66453H	17	71762R1	8	141806R94	10
179816	23			71763R1	10	141807R94	10
	6						
	25	66711R92	23	71764R1	8	141808R94	10
179819	15	67264H	17			141809R1	9
179820	19B	69606R1	6	73296R92	15	141810R1	9
	15	69500R1	5	73297R1	15	141811R1	9
	11	69541H	5	75524R3	5	141812R1	9
	6	76770R91	6	76953R3	5	149098R91	9
	14					149099R91	9
						149100R91	9







NUMERICAL INDEX

PART NO.	PAGE	PART NO.	PAGE	PART NO.	PAGE	PART NO.	PAGE
165910H1	25	T56-48	17				
174002H1	30	T56-23	17				
176819H1	20	T56-24	17				
176943H1	10	T301S8-6	17				
186041H1	23	T311S12-12	17				
186126H1	6	T315B5-5	17				
189357H1	19	T315B6-4	17				
		T8S8-10	17				
		T8S10-9	17				
Zenith Part Numbers							
12537	17						
B3-62-A	17						
B38-34-27	17						
C-181-74	17						
CHI-17	17						
CR28-28	17						
CR41-3	17						
CT48-10	17						
CT63-4	17						
CT91-3	17						
C21-78	17						
C23-642	17						
C24-7BVX2	17						
C24-93M-IX3	17						
C36-61X1	17						
C46-38	17						
C51-20-18	17						
C52-6-26	17						
C55-7-16	17						
C66-48-80	17						
C77-18-30	17						
C81-1-40	17						
C85-26	17						
C97-15-10	17						
C101-22	17						
C105-138	17						
C120-15	17						
C131-2	17						
C131-33	17						
C138-24	17						
C138-38	17						
C138-46	17						
C138-53	17						
C140-7	17						
C141-4-1	17						
C142-21	17						
F2-1T5	17						
T56-3	17						
T56-4	17						
T56-12	17						