

# PARTS CATALOG

**INTERNATIONAL<sup>®</sup>**  
AND  
**HOUGH<sup>®</sup>**

**G-263**  
CARBURETED ENGINE  
USED IN  
MODEL H-30B PAY LOADER  
AND  
MODEL H-50B PAY LOADER

FORM  
**PMG-263**

SEPTEMBER, 1967

*(Supersedes FORM G-263 which  
should be destroyed)*

INTERNATIONAL HARVESTER COMPANY  
401 NORTH MICHIGAN AVENUE  
CHICAGO, ILLINOIS 60611, U.S.A.

**CONSTRUCTION EQUIPMENT**

Due to a continuous program of research and development, some procedures, specifications and parts may be altered in a constant effort to improve machines.

Periodic revisions may be made to this publication and mailed automatically to distributors. It is recommended that customers contact their distributor or dealer for information on the latest revision.

**G-263**  
**CARBURETED ENGINE**  
USED IN  
**MODEL H-30B PAY LOADER**  
AND  
**MODEL H-50B PAY LOADER**  
FORM  
**PMG-263**

SEPTEMBER, 1967

*(Supersedes FORM G-263 which  
should be destroyed)*

# The Importance of ADEQUATE PARTS and SERVICE



The wise purchaser of a new machine gives consideration to the following factors:

1. *Original quality*
2. *Availability of service parts*
3. *Availability of adequate service facilities*

In many cases the machine becomes the only means of performing certain tasks that must be done in a limited period of time. Wear is to be expected and under extreme conditions even breakage of parts may occur. However, the user can still be assured of getting his work done on time if service parts and adequate service facilities are available.

Foresighted International Harvester dealers make every effort to provide good service and maintain a completely adequate stock of service parts.

When in need of parts, always give your authorized International distributor or dealer your Engine serial number. We suggest that you write this serial number in the space provided below, for ready reference when parts are required.

Engine Serial No. \_\_\_\_\_  
(Stamped on left side of engine crankcase just below distributor)

## INSTRUCTIONS FOR ORDERING PARTS

- (a) All parts orders should be sent to parts depot when so instructed. Give complete address, state the county and railroad station (when shipping point is different than post office), also whether shipment is to go by parcel post, express, truck, or freight.
- (b) When ordering parts, give the IH part number, including suffix or prefix letters. To facilitate identification of these parts, "Complete Serial Numbers" (including letters and numerals) assigned to machines, if any, should be furnished.
- (c) Parts should be ordered on the standard parts order blank. The parts should be arranged in sequence by part numbers to facilitate service on orders at the parts depot.
- (d) Claims for shortage or error in the handling of an order for parts must be made upon receipt of goods.

*It is the policy of International Harvester Company to improve its products whenever it is possible and practical to do so.*

*We reserve the right to make changes or add improvements in the design or construction of parts at any time without incurring the obligation to install such changes on products previously delivered.*

## INTRODUCTION

This catalog contains a list of service parts for the G-263 engine used in model H-30B Payloader and H-50-B Payloader. The G-263 has a 3-9/16 x 4.390 six-cylinder carbureted engine.

Following is a brief summary of the system used in compiling this catalog. It is to your advantage to carefully study this summary.

This catalog is printed in a double column page format, and is divided into four sections--Introductory Pages, Indexes to Units, Illustrations and Parts Lists, and Numerical Index.

(1) INDEXES. Two types of indexes are used. The index to units alphabetically lists all of the units by page number. The numerical index at the back of the catalog lists all part numbers (excluding standard fasteners) giving the page number where the part is listed.

NOTE - Refer frequently to the Index to Units to save time in locating the proper unit.

(2) ILLUSTRATIONS. Parts in this catalog are illustrated by the "exploded view" method. Individual parts in each illustration are shown where they belong in relation to one another. Reference numbers only are shown in each illustration. These numbers correspond with numbers in the Reference Number column in the accompanying list of parts. Parts in illustrations without reference numbers are the same as duplicate parts with reference numbers.

CAUTION: Reference numbers should not be used when ordering parts. Always use IH part numbers or description when ordering.

(3) METHOD OF LISTING. The parts list of each classification is divided into units. Parts are listed in order according to reference number shown in the illustration, followed by a full description based upon the "noun first" method--i. e., the noun name of the parts is listed first then the modifying descriptive information which serves to specifically identify the item. For example: SHAFT w/two PLUGS ASSEMBLY, valve lever. Parts not shown in illustrations appear at end of list in alphabetical sequence by noun name. Parts listed will work on all units covered in this catalog unless a serial number or other qualifying designation is given for purpose of identification.

Throughout this catalog the term "Front" indicates the radiator end. Whenever the terms "Right" or "Left" are used it should be understood to mean from a rear position looking toward the radiator end.

MANUFACTURERS PART NUMBERS ARE LISTED IN BRACKETS FOLLOWING THE DESCRIPTION OF THE PART.

(4) NUMBER REQUIRED. In this new double-column catalog format the single "No. Req'd." column is eliminated and the quantity used of each item is shown in parentheses (4) following the description of the item. Where no quantity is indicated it should be understood to mean that only one (1) is required.

In many parts lists it is possible to include more than one assembly or attachment. The assemblies or attachments are listed at the beginning of the parts lists with the letters A, B, C, etc., preceding the part number of the assembly or attachment. The number required information is shown in parentheses following the description of the parts. When letters (A, B, C, etc.,) are shown without a quantity it should be understood to mean only one (1) is required. Parts without letters after the description indicate the part is used for all assemblies or attachments listed in the heading.

(5) ASSEMBLIES AND ATTACHMENTS. Whenever possible the component parts of assemblies or attachments are shown in the "exploded views" by use of boxes, brackets or arrows. Component parts of assemblies or attachments are listed by one of the following methods.

(a) The listings are fully covered by descriptions for simple assemblies and attachments.

(b) When four or more parts are contained in the assemblies or attachments the listing of components immediately follows the description with the wording "(Composed of-)."

(c) Assemblies or attachments consisting of many parts shows the assembly or attachment number at the beginning of the unit list, followed by the listing of the components.

Exceptions to the above methods are explained by footnotes in the text.

Individual parts of an assembly which are not available for service are marked with a symbol §. In some instances, such parts are listed with a notation giving the information which is to be used for ordering.

(6) MISCELLANEOUS PARTS. Standard bolts, screws, nuts, etc. --- are not identified by a reference number. These parts are known as COMMON HARDWARE items and appear in abbrevia-

INTRODUCTION (Continued)

ted nomenclature and are shown indented under the major items with which they are used. They should be ordered as listed, since they are not component parts of the pieces they attach. Hardware parts identified with part numbers have been designed for a specific usage. Standard hardware parts should not be substituted for them.

**WARNING:** Attaching parts especially made for their location should never be substituted with regular standard parts.

The following rules are established to govern the listing of attaching parts:

The part number for Common Hardware items is eliminated. However, Design Hardware items will continue to be listed by part number and description.

All Carriage, Machine and Plow BOLTS; NUTS; Cap, Machine and Set SCREWS, will be considered furnished with National Coarse Thread unless otherwise specified. The number of threads per inch will be eliminated.

All NUTS will be considered "hex." unless otherwise specified.

All WASHERS will be considered "Plain" unless otherwise specified. The "ID", "OD" and "No." identity will be eliminated. The inside dimension will be listed first, followed by the outside diameter and the thickness.

All lock WASHERS will be considered "Medium" type unless specified as "Light" or "Heavy."

All cotter PINS will be considered "Extended-Prong" type unless otherwise specified.

All groove PINS will be considered "Standard Groove" unless otherwise specified.

All common RIVETS will be considered "Annealed" unless otherwise specified.

All countersunk-head tubular RIVETS will be considered "Copper-Plated Steel" unless otherwise specified.

All oval-head tubular RIVETS will be considered "Brass."

Standard bolts used in International Harvester Products are manufactured under standards known as Unified National Coarse Thread (U. N. C.) and Unified National Fine Thread (U. N. F.) with the number of threads per inch for various diameters as follows:

Diameter of Bolt	No. of Threads per inch (U. N. C.)	No. of Threads per inch (U. N. F.)
1/4"	20	28
5/16"	18	24
3/8"	16	24
7/16"	14	20
1/2"	13	20
9/16"	12	18
5/8"	11	18
3/4"	10	16
7/8"	9	14
1"	8	14
1-1/8"	7	12
1-1/4"	7	12
1-3/8"	6	12
1-1/2"	6	12

(7) ABBREVIATIONS. The abbreviations used in this catalog are explained in the list of abbreviations on page 3.

(8) SERIAL NUMBERS.

	Starting Engine Serial Number
<u>Models</u>	<u>Number</u>
G-263	G-263 501

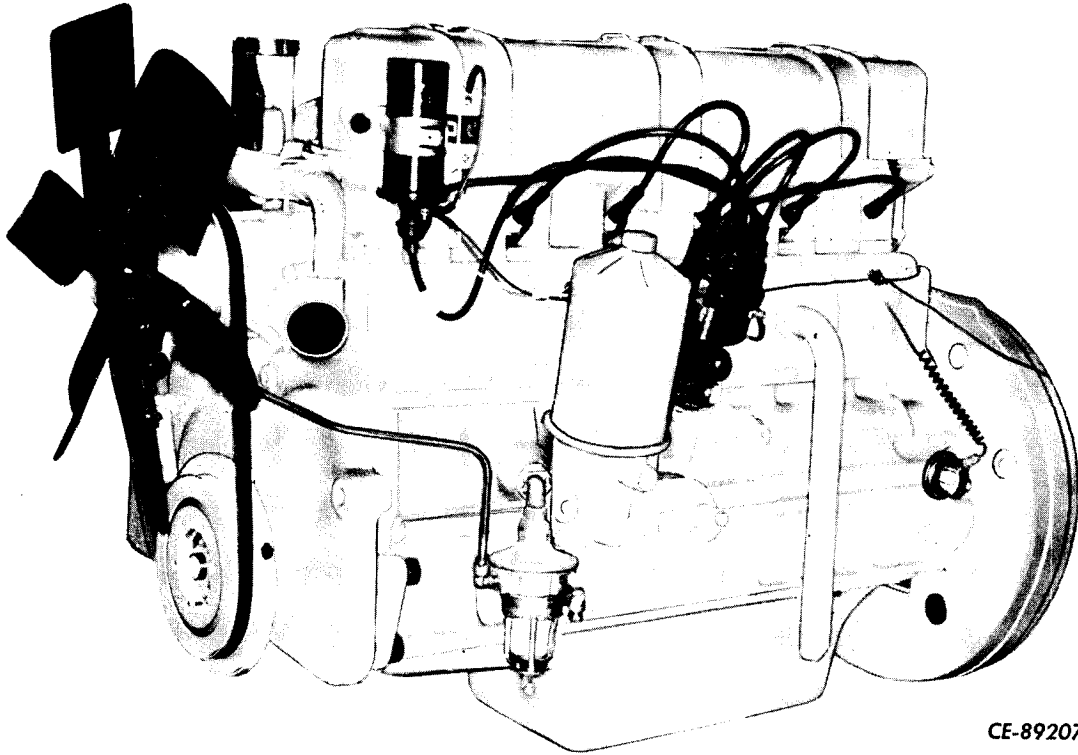
The engine serial numbers for the G-263 are stamped on a pad on the left side of the engine crankcase just below the distributor.

LIST OF ABBREVIATIONS

A period after the abbreviation is used only when the abbreviation form spells a common English word.

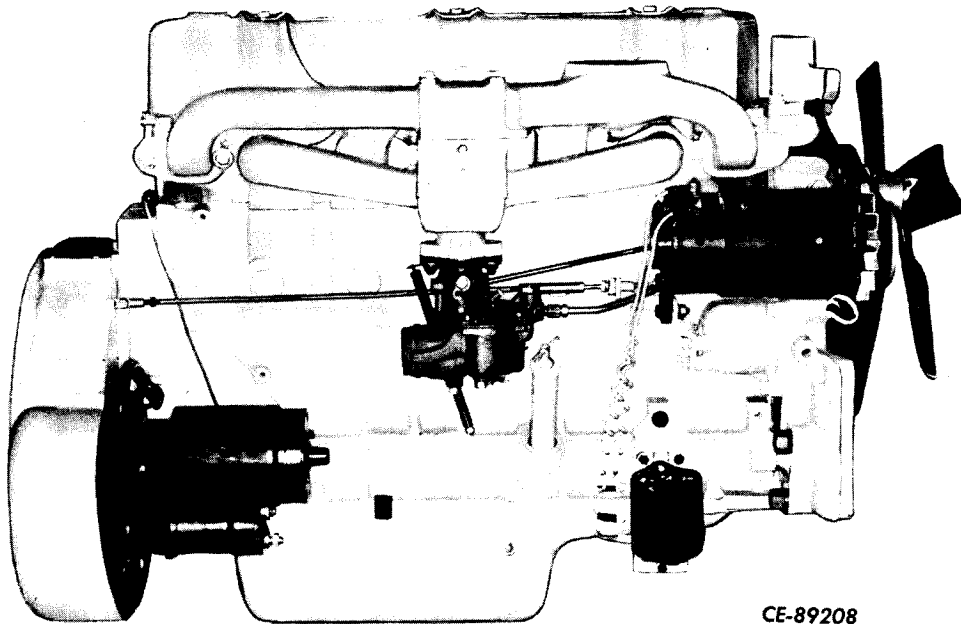
int	internal
lb	pound, pounds
lenti-hd	lentic head
LH	left hand
lkg	locking
LP Gas	Liquefied Petroleum Gas
lub	lubrication
mach	machine
med	medium
MI	malleable iron
NC	National Coarse Thread
NF	National Fine Thread
ni	nickel
ni-pitd-stl	nickel plated steel
No.	number
NPT	National pipe thread
OC	outside circumference
OD	outside diameter
O/S	oversize
ov-hd	oval head
oz	ounce
parkerized-stl	parkerized steel
pkg	package
pltd	plated
pt	point
PTO	power take-off
rd-end	round end
rd-hd	round head
rd-pt	round point
reg	regular
RH	right hand
RPM	revolutions per minute
SAE	Society of Automotive Engineers
sf	semi-finished
sit	slotted
sit-hd	slotted head
sit-bd-hd	slotted binding head
sit-fl-hd	slotted filler head
sit-f-hd	slotted flat head
sit-hex-hd	slotted hexagon head
sit-pan-hd	slotted pan head
sit-rd-hd	slotted round head
sit-truss-hd	slotted truss head
sq	square
sq-hd	square head
sq-nk	square neck
std	standard
std-hd	standard head
stl	steel
str	straight
J	teeth
tap	tapping
U/S	undersize
unhd	unfinished
wagon-box-hd	wagon box head
w/	with
w/drz	with bronze
w/hex	with hexagon
w/o	without
zn	zinc
zn-ct	zinc coated
zn-pltd	zinc plated

adj	adjustable
al	aluminum
aly-stl	alloy steel
amp	ampere, amperes
anl	annealed
approx	approximately
assy	assembly
att	attachment
bd-hd	binding head
b-hd	button head
brg	bearing
brs	brass
brz	bronze
cd-pitd	cadmium plated
cd-pitd-stl	cadmium plated steel
cr-pitd	chromium plated
cr-pitd-stl	chromium plated steel
CI	cast iron
csk	countersunk
csk-hd	countersunk head
cl-rec-hd	clutch recess head
com	common
cone-pt	cone point
contd	continued
cop	copper
cop-pitd	copper plated
cot	cotter
c-pin	cotter pin
c-res	corrosion-resistant-steel (stainless)
cr-rec-hd	cross recess head
cre	corrosion resisting
crg	carriage
cup-pt	cup point
cyl	cylinder, cylinders
deg	degree
dia	diameter
did	drilled
did-f/-c-pin	drilled for cotter pin
did-f/lkg-wire	drilled for locking wire
dog-pt	dog point
ext	external
f/	for
fem	female
fl-hd	fillister head
fn-nk	fin neck
f-sk-hd	flat countersunk head
f-fl-hd	flat fillister head
f-hd	flat head
f-pt	flat-point
flex	flexible
ftd	fluted
ft	foot (or feet)
ga	gauge
hd	head
hdls	headless
hex	hexagon
hex-hd	hexagonal-head
hex-soc-hd	hexagon socket head
hp	horsepower
hv	heavy
hydraulic	hydraulic
ID	inside diameter
in.	inch or inches



CE-89207

Left Side View of G-263 Series Carbureted Engine



CE-89208

Right Side View of G-263 Series Carbureted Engine

INDEX

DESCRIPTION	Page	DESCRIPTION	Page
<b>DIESEL ENGINE</b>		<b>COOLING SYSTEM</b>	
Balancer, engine . . . . .	13	Belt, water pump and generator . . .	29
Bearings		Body, water pump . . . . .	21
Crankshaft . . . . .	13	Fan . . . . .	21
Connecting rod . . . . .	11	Package, water pump service . . . .	21
Camshaft . . . . .	15	Pulley, water pump . . . . .	21
Camshaft and related parts . . . . .	15	Pump, water . . . . .	21
Cover, cylinder head		Thermostat . . . . .	21
Crankcase, front . . . . .	10		
Valve . . . . .	7	<b>LUBRICATION SYSTEM</b>	
Crankcase and related parts . . . . .	8	Filter, lubricating oil . . . . .	23, 24
Crankshaft . . . . .	13	Gauge, oil level . . . . .	8
Cylinder head . . . . .	6	Package, lubrication oil filter element	23, 24
Damper . . . . .	13	Pan, crankcase oil . . . . .	
Flywheel . . . . .	13	Pump, lubricating oil . . . . .	22
Gear, idler . . . . .	10		
Gear, camshaft . . . . .	15	<b>ELECTRICAL SYSTEM</b>	
Gear, flywheel ring . . . . .	13	Belt, generator and water pump . . .	29
Governor and connections . . . . .	16	Cable . . . . .	25
Head, cylinder . . . . .	6	Coil . . . . .	25
Housing, flywheel . . . . .	8	Distributor . . . . .	26
Levers, valve . . . . .	7	Generator . . . . .	29, 30
Manifold		Generator and connections . . . . .	29
Intake . . . . .	14	Motor, cranking . . . . .	27
Exhaust . . . . .	14	Pulley, generator . . . . .	30
Pan, oil . . . . .	22	Regulator, voltage . . . . .	31
Pistons . . . . .	11, 12	Spark Plugs . . . . .	25
Rods, connecting . . . . .	11, 12		
Sleeve, cylinder . . . . .	11, 12	<b>MISCELLANEOUS</b>	
Valves		Gasket packages	
Intake . . . . .	6	Cylinder head . . . . .	32
Exhaust . . . . .	6	Crankcase . . . . .	32
		Product Graphics . . . . .	32
<b>FUEL SYSTEM</b>			
Belt, Generator and water pump . . .	29		
Carburetor . . . . .	18		
Fuel pipe and connections . . . . .	20		
Pump, fuel . . . . .	20		





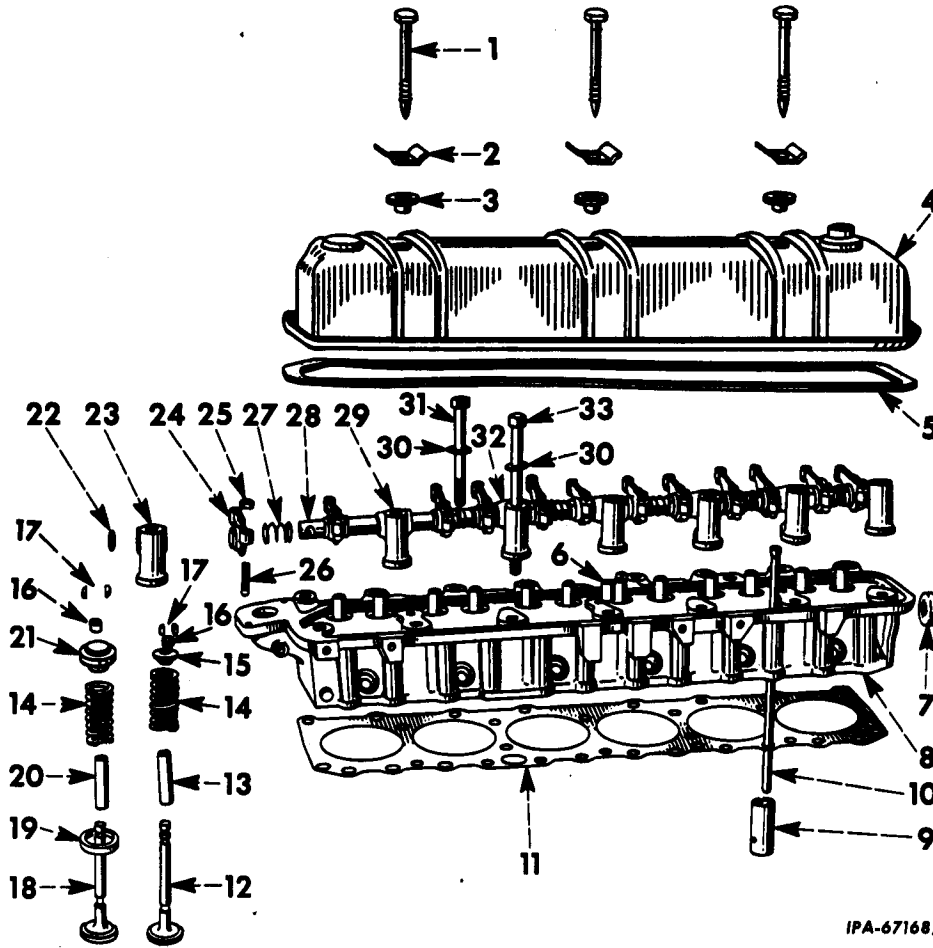
# DIESEL ENGINE



REF. PART NO.	PART NUMBER	DESCRIPTION	REF. PART NO.	PART NUMBER	DESCRIPTION
---------------	-------------	-------------	---------------	-------------	-------------

CYLINDER HEAD AND RELATED PARTS

CYLINDER HEAD AND RELATED PARTS—Continued



IPA-67168A

1	168 144 R1	BOLT, valve cover (3)	8	373 423 R21	HEAD ASSY, cylinder G-263 501 to 56635 (Composed of - § 1 HEAD
2	370 208 R1	STIFFENER, valve cover (3)		12 GUIDE	237 248 R1
3	164 420 R1	GROMMET, valve cover (3)		1 PLUG	70 128 R1
4	378 617 R91 103 866	COVER w/PLUG, 103 866 valve PLUG, 1/4" sq-hd pipe		1 PLUG	126 045
5	369 983 R1	GASKET, valve cover		1 PLUG	103 874
6	69 500 R1	DOWEL, valve lever shaft intermediate No. 2, No. 4 and No. 6 bracket (3)		6 SEAT	126 373 R1 )
7	70 128 R1	PLUG, core hole		5/16 x 1/2" hex-hd cap SCREW (2)	
8	372 615 R94	HEAD ASSY, cylinder G-263 501 to 56635 (Composed of -	8	382 098 R94	HEAD w/VALVE ASSY, cylinder G-263 56636 up (Composed of -
	1 HEAD	373 423 R21		12 SEAL	866 834 R1
	24 KEY	41 339 D		1 HEAD w/ GUIDES	383 665 R92
	6 RETAINER	151 167 R3		24 KEY	41 339 D
	6 ROTO-COIL	375 604 R91		1 PLUG	70 128 R1
	12 SEAL	866 834 R1		6 RETAINER	151 167 R3
	12 SPRING	367 192 R1		6 ROTOCOIL	375 604 R91
	6 VALVE	234 275 R1		12 SPRING	367 192 R1
	6 VALVE	372 699 R2 )		6 VALVE	234 276 R1
				6 VALVE	372 699 R2 )

§ - Not Furnished Separately

**DIESEL ENGINE**

REF. NO.	PART NUMBER	DESCRIPTION	REF. NO.	PART NUMBER	DESCRIPTION
<b>CYLINDER HEAD AND RELATED PARTS—Continued</b>			<b>CYLINDER HEAD AND RELATED PARTS—Continued</b>		
8	383 665 R94	HEAD w/GUIDES ASSY, cylinder G-263 56636 up (Composed of - § 1 HEAD 12 GUIDE 237 248 R1 1 PLUG 70 128 R1 6 SEAT 126 373 R1 ) 5/16 x 1/2" hex-hd cap SCREW (2)	444 782		PLUG, 3/8" sq-soc pipe
			444 664		PLUG, 1/2" sq-soc pipe
			111 024 R1		SEAL, intake valve stem (used with VALVE, 127 201 R1) (6)
8	387 718 R21	HEAD, cylinder 5/16 x 1/2" hex-hd cap SCREW			
9	75 524 R3	TAPPET, valve (12)			
10	164 436 R91	ROD, valve push (12)			
11	164 418 R2	GASKET, cylinder head			
12	234 275 R1	VALVE, intake (together with 866 834 R1 will work for 127 201 R1) (6) G-263 501 to 26634			
12	234 276 R1	VALVE, intake (6) G-263 26635 Up			
13	237 248 R1	GUIDE, intake valve stem (6)			
14	367 192 R1	SPRING, valve (12)			
15	151 167 R3	RETAINER, valve spring (6)			
16	866 834 R1	SEAL, valve stem (12)			
17	41 339 D	KEY, valve spring retainer (24)			
18	372 699 R3	VALVE, exhaust (Stellite faced)			
19	126 373 R1	SEAT, exhaust valve (6)			
19	126 231 R1	SEAT, exhaust valve (.015" oversize) (6)			
19	83 488 R2	SEAT, exhaust valve (.030" oversize) (6)			
20	237 248 R1	GUIDE, exhaust valve stem (6)			
21	375 604 R91	ROTOCOIL, exhaust valve (6)			
22	109 544 R1	PLUG, rocker arm (2)			
23	164 422 R1	BRACKET, valve lever shaft front and rear (2)			
24	164 432 R91	LEVER w/SCREW, 16 067 DA and NUT, 133 093 R1, valve (12)			
25	133 093 R1	NUT, valve lever adjusting screw (12)			
26	16 067 DA	SCREW, valve lever adjusting (12)			
27	35 619 H	SPRING, valve lever (6)			
28	76 953 R3 17 244 R1	SHAFT, valve lever (2) PIN, 5/16 x 1-1/4" roll (optional with 19 790 R1) (2)			
	19 790 R1	PIN, 5/16 x 1-1/4" roll (optional with 17 244 R1) (2)			
29	164 423 R11	BRACKET w/DOWEL, 69 500 R1, valve lever shaft intermediate No. 2, No. 4 and No. 6 (3)			
30	58 516 H	WASHER, cylinder head bolt (15)			
31	69 722 R1	BOLT, cylinder head (short) (8)			
32	164 425 R1	BRACKET, valve lever shaft, intermediate No. 3 and No. 5 (2)			
33	367 190 R1	BOLT, cylinder head (long) (7)			

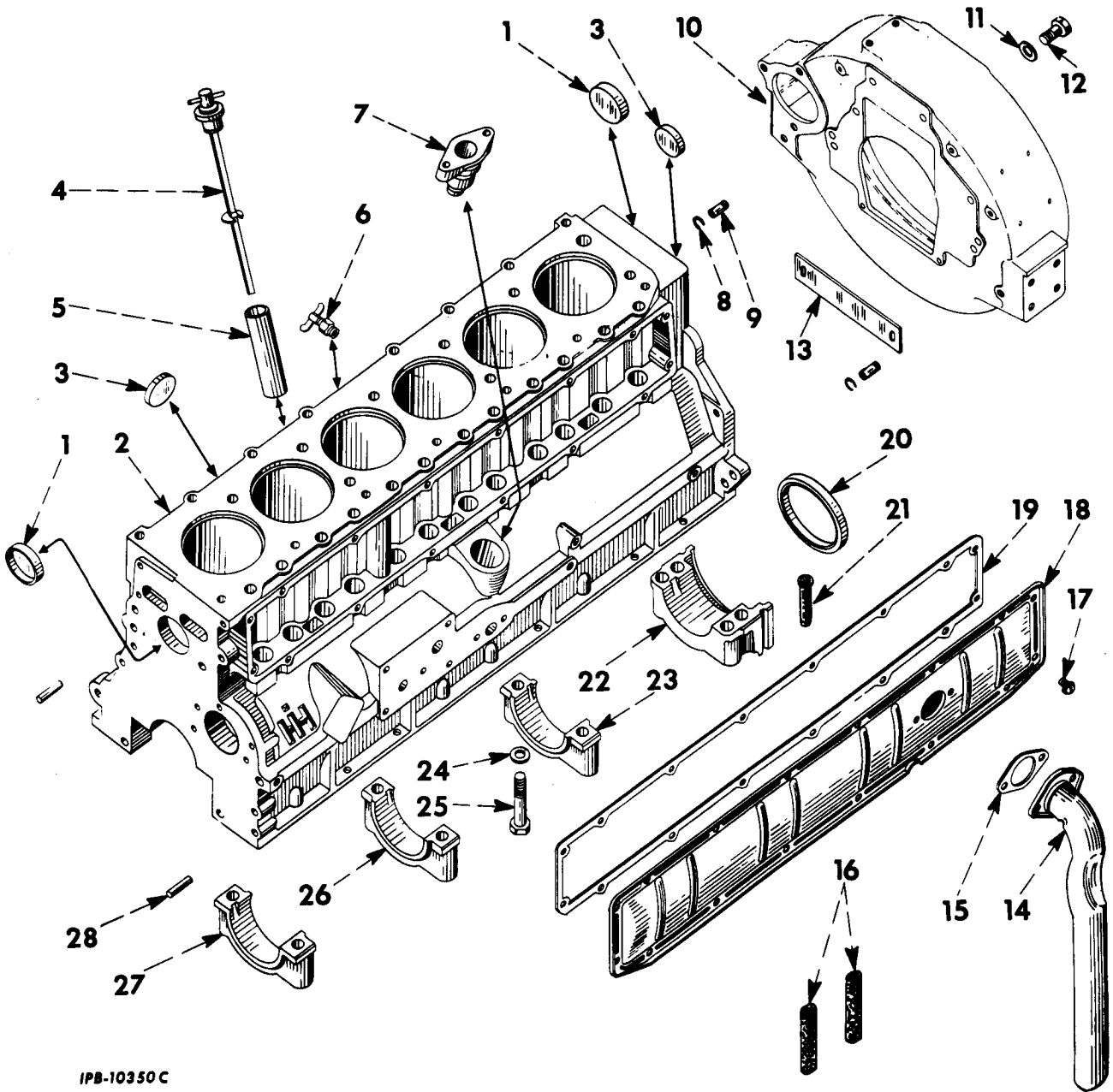
§ - Not Furnished Separately.



# DIESEL ENGINE

CRANKCASE AND RELATED PARTS

CRANKCASE AND RELATED PARTS—Continued



IPB-10350 C



# DIESEL ENGINE



REF. NO.	PART NUMBER	DESCRIPTION
CRANKCASE AND RELATED PARTS—Continued		
1	70 129 R1	PLUG, core hole (2)
2	367 512 R95	CRANKCASE ASSEMBLY (Composed of -
	1	ADAPTER 367 513 R1
	10	BOLT 70 133 R1
	1	BEARING 70 259 R2
	1	BEARING 70 260 R1
	1	BEARING 70 261 R2
	1	BEARING 70 262 R1
	§ 1	CAP
	§ 1	CAP
	§ 1	CAP
	§ 1	CAP
	1	COCK 103 647
	1	COVER 356 243 R1
	§ 1	CRANKCASE
	2	DOWEL 371 699 R2
	2	DOWEL 376 353 R1
	2	PIN 141 285
	2	PLUG 126 045
	6	PLUG 70 128 R1
	2	PLUG 70 129 R1
	3	PLUG 444 852
	1	TUBE 378 102 R1
	1	TUBE 368 985 R2
	10	WASHER 58 516 H )
3	70 128 R1	PLUG, core hole (6)
4	368 986 R91	GAUGE, oil level
5	368 985 R2	TUBE, oil filler
5	378 102 R1	TUBE, oil filler (for distributor ignition) G-263 501 to 56635 G-263 56636 Up
6	103 647	COCK, 1/4" drain (type C)
7	367 513 R1	ADAPTER, distributor mounting
8		NOT USED
9	371 699 R2	DOWEL, engine rear support (2)
9	376 353 R1	DOWEL, engine rear support (.030" oversize) (2)
10	308 468 R1	HOUSING, flywheel
11	178 031	WASHER, 1/2" ext tooth lock
12	278 790 R1	BOLT, flywheel housing (2)  PLUG, 1-3/4" button
13	367 225 R1	SEAL, engine rear support dust 1/2" NUT (4) 5/16 x 5/8" hex-hd, cap SCREW (2) 1/2 x 2-1/4" hex-hd cap SCREW (4) 11/32 x 11/16" x .065" WASHER (2)
14	368 429 R21 374 587 R91	PIPE, breather SCREW w/WASHER, 1/4 x 1/2" slt-rd-hd (2)
15	369 981 R1	GASKET, breather pipe
16	369 442 R1	ELEMENT, breather pipe (used with COVER, 69 734 R11)
16	315 849 R1	ELEMENT, breather pipe (used with COVER, 315 970 R91) (2)
17	375 612 R91	SCREW w/WASHER, 1/4 x 1/2", slt-rd-hd mach (16)
18	315 970 R91	COVER, w/two ELEMENT, 315 849 R1, valve push rod (will work for 69 734 R11)
19	369 982 R1	GASKET, valve push rod cover
20	393 180 R91	SEAL, crankshaft rear oil

REF. NO.	PART NUMBER	DESCRIPTION
CRANKCASE AND RELATED PARTS—Continued		
21	310 665 R1	PLUG, rear bearing cap (will work for 1 738 Y) (2)
22		CAP, crankshaft rear bearing (not furnished separately) (order Crankcase Assembly)
23		CAP, crankshaft intermediate rear bearing (not furnished separately) (order Crankcase Assembly)
24	58 516 H	WASHER, bearing cap bolt (10)
25	70 133 R1	BOLT, crankshaft bearing cap (10)
26		CAP, crankshaft intermediate front bearing (not furnished separately) (order Crankcase Assembly)
27		CAP, crankshaft front bearing (not furnished separately) (order Crankcase Assembly)
28	141 285	PIN, 1/2 x 1-1/4" dowel, crankcase front plate and cover (2)
	70 259 R2	BEARING, camshaft front (will work for 367 514 R1) illustrated with "Camshaft and Related Parts")
	70 260 R1	BEARING, camshaft intermediate front (illustrated with "Camshaft and Related Parts")
	70 261 R2	BEARING, camshaft intermediate rear (illustrated with "Camshaft and Related Parts")
	70 262 R1	BEARING, camshaft rear (illustrated with "Camshaft and Related Parts")
	356 243 R1	COVER, fuel pump pad
	371 699 R2	DOWEL, engine rear support 7/16" (2) 1/2 x 2-1/4" hex-hd cap SCREW (4) 1/2" NUT (4)
	126 045	PIPE, 3/8" sq-soc (2)
	444 852	PLUG, 1/8" hex-soc-hd CI (crankcase drain) (optional with 444 853 and 444 854) (3)
	444 853	PLUG, 1/8" hex-soc-hd MI (crankcase drain) (optional with 444 852 and 444 854) (3)
	444 854	PLUG, 1/8" hex-soc-hd slt (crankcase drain) (optional with 444 852 and 444 853) (3)

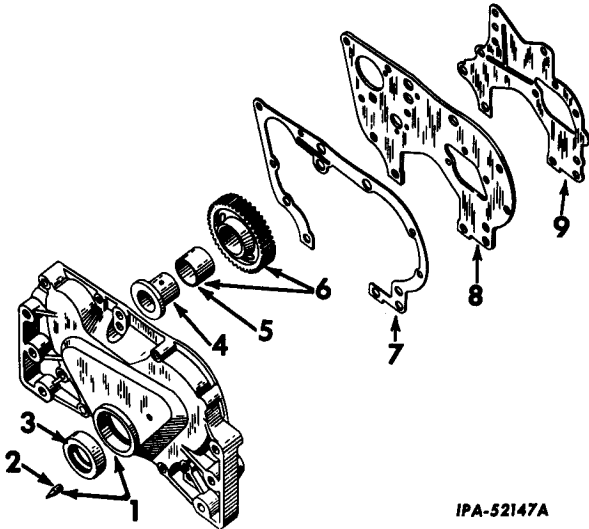
§ - Not Furnished Separately



# DIESEL ENGINE

REF. NO.	PART NUMBER	DESCRIPTION
----------	-------------	-------------

**CRANKCASE FRONT COVER & IDLER GEAR**



IPA-52147A

- |   |                        |  |
|---|------------------------|--|
| 1 | 372 499 R11            | COVER w/POINTER, 367 572 R1 crankcase front<br>1/2 x 2-3/4" hex-hd cap SCREW (6)<br>1/2" lock WASHER (6)         |
| 2 | 367 572 R1             | POINTER, timing  |
| 3 | 357 672 R91            | OIL SEAL, crankshaft (used w/DAMPER, 372 202 R1 or 338 949 R91)  |
| 3 | 317 549 R91            | OIL SEAL, crankshaft (used w/DAMPER, 338 949 R91)  |
| 4 | 367 580 R11<br>141 150 | SHAFT w/PIN, 141 150, idler gear<br>PIN, 3/16 x 7/16" dowel<br>1/2 x 2-1/4" hex-hd cap SCREW<br>1/2" lock WASHER |
| 5 | 367 578 R1             | BUSHING, idler gear  |
| 6 | 367 577 R11            | GEAR w/BUSHING, 367 578 R1, idler  |
| 7 | 367 574 R1             | GASKET, crankcase front cover  |
| 8 | 367 524 R1             | PLATE, crankcase front<br>3/8 x 1" hex-hd cap SCREW (6)<br>3/8" lock WASHER (6)                                  |
| 9 | 367 570 R1             | GASKET, crankcase front plate  |



# DIESEL ENGINE

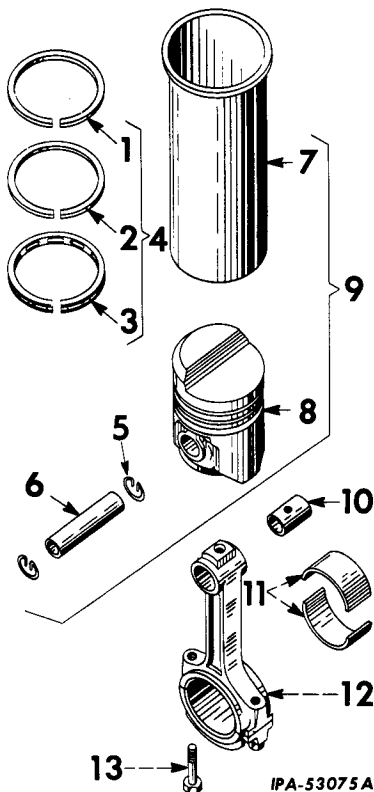


REF. NO.	PART NUMBER	DESCRIPTION
----------	-------------	-------------

REF. NO.	PART NUMBER	DESCRIPTION
----------	-------------	-------------

**CONNECTING RODS, SLEEVES AND PISTONS**  
G-263 501 to 56635

**CONNECTING RODS, SLEEVES AND PISTONS—Continued**  
G-263 501 to 56635



9	371 833 R92	SLEEVE SET, crankcase (consists of six SLEEVES w/PISTONS and RINGS, 372 084 R92) (gasoline-high altitude)
9	372 084 R92	SLEEVES w/PISTONS and RINGS ASSY, cylinder (gasoline-high altitude) (6)
10	364 913 R1	BUSHING, piston pin (6)
11	367 408 R11	BEARING, connecting rod (2 halves)(std)(6)
11	367 632 R11	BEARING, connecting rod (2 halves) (.002" undersize) (6)
11	376 666 R11	BEARING, connecting rod (2 halves) (.010" undersize) (6)
11	376 668 R11	BEARING, connecting rod (2 halves) (.020" undersize) (6)
11	367 631 R11	BEARING, connecting rod (2 halves) (.030" undersize) (6)
11	367 630 R91	BEARING SET, connecting rod (Consists of six BEARING, 367 408 R11) (standard)
11	377 285 R91	BEARING SET, connecting rod (Consists of six BEARING, 367 632 R11) (.002" undersize)
11	376 665 R91	BEARING SET, connecting rod (Consists of six BEARING, 376 666 R11) (.010" undersize)
11	376 667 R91	BEARING SET, connecting rod (Consists of six BEARING, 376 668 R11) (.020" undersize)
11	372 443 R91	BEARING SET, connecting rod (Consists of six BEARING, 367 631 R11) (.030" undersize)
12	367 406 R12	ROD w/two BOLTS, 316 366 R1 and BUSHING, 364 913 R1, connecting (6)
13	316 366 R1	BOLT, connecting rod (12)

1	389 747 R1	RING, piston barrel compression (top groove) (3/32" chrome thick wall) (6)
2	389 751 R1	RING, piston taper face compression (second groove) (3/32" plain) (6)
3	388 355 R1	RING, piston oil regulating (third groove) (1/4" Perflon) (6)
4	367 649 R92	RING SET, piston (replacement) (consists of six chrome compression rings, six plain compression and six oil regulating rings) (6)
5	19 517 D	RING, piston pin retainer (12)
6	70 014 R1	PIN, piston (standard) (6) G-263 501 to 36027
6	278 271 R1	PIN, piston (standard) (6) G-263 36028 Up
6	70 015 R1	PIN, piston (.005" oversize) (6) G-263 501 to 36027
6	278 326 R1	PIN, piston (.005" oversize) (6) G-263 36028 Up
7		SLEEVE, cylinder (order sleeve assembly cylinder w/piston and rings) (6)
8		PISTON (order sleeve assembly cylinder with piston and rings) (6)
9	367 640 R92	SLEEVE w/PISTON and RINGS ASSY, cylinder (6)
9	367 639 R92	SLEEVE SET, cylinder (consists of six SLEEVES w/PISTONS and RINGS, 367 640 R92)

# DIESEL ENGINE

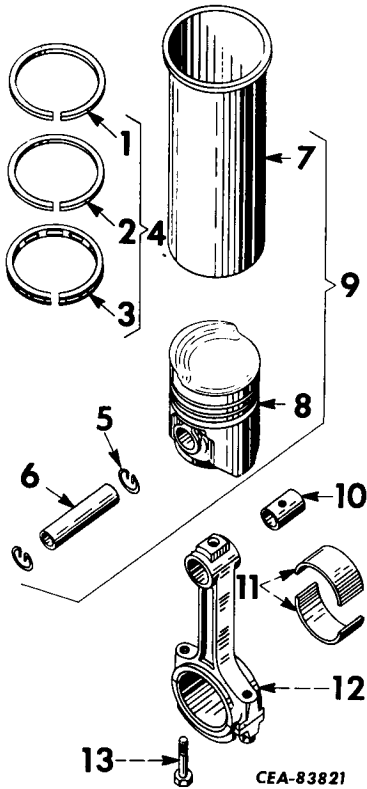


REF. NO.	PART NUMBER	DESCRIPTION
----------	-------------	-------------

CONNECTING RODS, SLEEVES AND PISTONS  
G-263 56636 Up

REF. NO.	PART NUMBER	DESCRIPTION
----------	-------------	-------------

CONNECTING RODS, SLEEVES AND PISTONS—Continued  
G-263 56636 Up



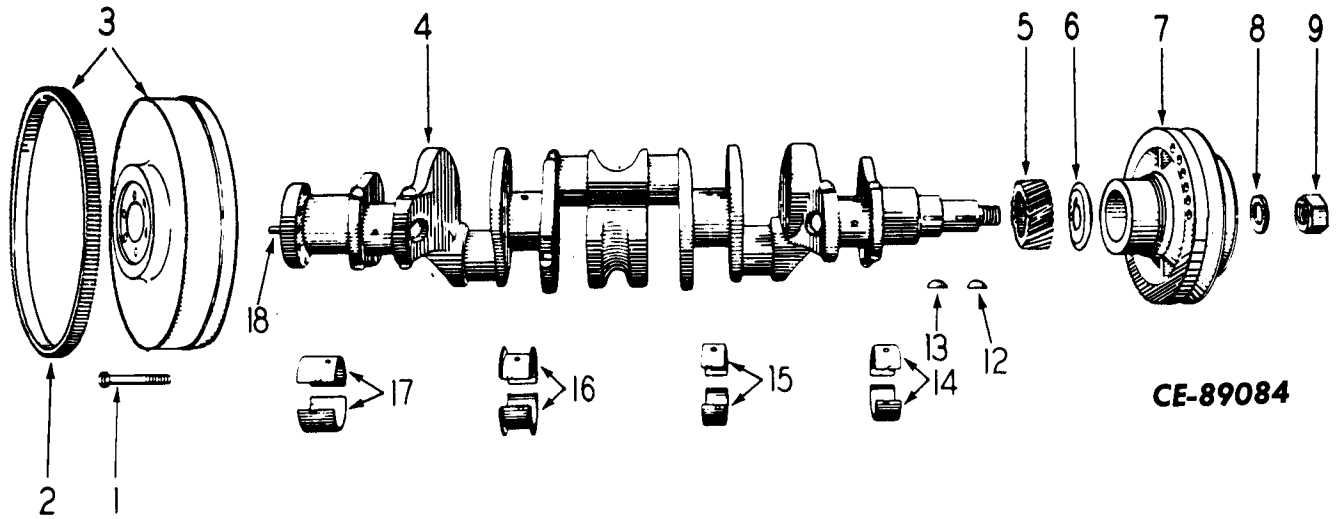
9	380 649 R95	SLEEVE w/PISTON and RING ASSY, cylinder (gasoline-high altitude) (6)
9	380 648 R95	SLEEVE SET, crankcase (consists of six SLEEVES, w/PISTONS and RINGS, 380 649 R95) (gasoline-high altitude)
10	364 913 R1	BUSHING, piston pin (6)
11	367 408 R11	BEARING, connecting rod (2 halves) (standard) (6)
11	367 632 R11	BEARING, connecting rod (2 halves) (.002" undersize) (6)
11	376 666 R11	BEARING, connecting rod (2 halves) (.010" undersize) (6)
11	376 668 R11	BEARING, connecting rod (2 halves) (.020" undersize) (6)
11	367 631 R11	BEARING, connecting rod (2 halves) (.030" undersize) (6)
11	367 630 R91	BEARING SET, connecting rod (Consists of six BEARING, 367 408 R11) (standard)
11	377 285 R91	BEARING SET, connecting rod (Consists of six BEARING, 367 632 R11) (.002" undersize)
11	376 665 R91	BEARING SET, connecting rod (Consists of six BEARING, 376 666 R11) (.010" undersize)
11	376 667 R91	BEARING SET, connecting rod (Consists of six BEARING, 376 668 R11) (.020" undersize)
11	372 443 R91	BEARING SET, connecting rod (Consists of six BEARING, 367 631 R11) (.030" undersize)
12	367 406 R21	ROD w/two BOLTS, 316 366 R1 and BUSHING, 364 913 R1, connecting (6)
13	316 366 R1	BOLT, connecting rod (12)

1	389 747 R1	RING, piston barrel compression (top groove) (3/32" chrome thick wall) (6)
2	389 751 R1	RING, piston taper face compression (second groove) (3/32" plain) (6)
3	388 355 R1	RING, piston oil regulating (third groove) (1/4" perflon) (6)
4	367 649 R92	RING SET, piston (replacement) (consists of six Chrome compression rings, six plain compression and six oil regulating rings)
5	19 517 D	RING, piston pin retainer (12)
6	70 014 R1	PIN, piston (standard) (6) G-263 501 to 36027
6	278 271 R1	PIN, piston (standard) (6) G-263 36028 Up
6	70 015 R1	PIN, piston (.005" oversize) (6) G-263 501 to 36027
6	278 326 R1	PIN, piston (.005" oversize) (6) G-263 36028 Up
7		SLEEVE, cylinder (order sleeve assembly cylinder w/piston and rings) (6)
8		PISTON (order sleeve assembly cylinder w/Piston and rings) (6)
9	378 604 R95	SLEEVE w/PISTON and RINGS ASSY, cylinder (gasoline standard altitude) (6)
9	378 603 R95	SLEEVE SET, cylinder (consists of six sleeves w/PISTONS and RINGS, 378 604 R94) (gasoline standard altitude)

# DIESEL ENGINE



REF. NO.	PART NUMBER	DESCRIPTION	REF. NO.	PART NUMBER	DESCRIPTION
CRANKSHAFT, FLYWHEEL, BEARINGS, DAMPER AND PULLEY			CRANKSHAFT, FLYWHEEL, BEARINGS, DAMPER AND PULLEY—Continued		



1	70 426 R1	BOLT, flywheel to crankshaft (6)	15	367 303 R91	BEARING, crankshaft intermediate front (2 halves) (.002" undersize)
2	372 568 R1	GEAR, flywheel ring (159T)	15	376 673 R91	BEARING, crankshaft intermediate front (2 halves) (.010" undersize)
3	4 500 117 R91	FLYWHEEL w/GEAR, 372 568 R1	15	376 686 R91	BEARING, crankshaft intermediate front (2 halves) (.020" undersize)
4	367 269 R91	CRANKSHAFT ASSY (standard) G-263 501 to 36693	15	367 291 R91	BEARING, crankshaft intermediate front (2 halves) (.030" undersize)
		(Composed of -	16	367 282 R91	BEARING, crankshaft intermediate rear (standard) (2 halves)
		1 BEARING SET 367 630 R91			G-263 501 to 36693
		1 BEARING SET 382 357 R91	16	332 267 R91	BEARING, crankshaft intermediate rear (standard) (2 halves)
		§ 1 CRANKSHAFT			G-263 36694 Up
		1 PIN 82 970 R1 )	16	307 306 R91	BEARING, crankshaft intermediate (.002" undersize) (2 halves)
4	382 356 R91	CRANKSHAFT ASSY (standard) G-263 36694 Up			G-263 501 to 36693
		(Composed of -	16	332 273 R91	BEARING, crankshaft intermediate (.002" undersize) (2 halves)
		1 BEARING SET 367 630 R91			G-263 36694 Up
		1 BEARING SET 382 357 R91	16	332 276 R91	BEARING, crankshaft intermediate rear (2 halves) (.010" undersize)
		§ 1 CRANKSHAFT	16	332 279 R91	BEARING, crankshaft intermediate rear (2 halves) (.020" undersize)
		1 PIN 82 970 R1 )	16	367 294 R91	BEARING, crankshaft intermediate (2 halves) (.030" undersize)
4	367 267 R1	CRANKSHAFT, (standard)			G-263 501 to 36693
4	367 271 R92	PACKAGE, crankshaft w/BEARINGS, field service (renewal) (undersize) (UC-263) (Consists of six connecting rod BEARINGS, four crankshaft BEARINGS, CRANKSHAFT and PIN, 82 970 R1)	16	332 270 R91	BEARING, crankshaft intermediate (2 halves) (.030" undersize)
					G-263 36694 Up
5	367 272 R1	GEAR, crankshaft	17	367 285 R91	BEARING, crankshaft rear (2 halves) (standard)
6	71 763 R2	SLINGER, crankshaft oil	17	367 309 R91	BEARING, crankshaft rear (2 halves) (.002" undersize)
7	338 949 R91	DAMPER AND PULLEY	17	376 679 R91	BEARING, crankshaft rear (2 halves) (.010" undersize)
8	70 109 R1	WASHER, starting crank nut	17	376 692 R91	BEARING, crankshaft rear (2 halves) (.020" undersize)
9	23 174 V	NUT, crankshaft	17	367 297 R91	BEARING, crankshaft rear (2 halves) (.030" undersize)
12	117 984	KEY, 5/16 x 1-3/8" (Woodruff No. 23) (damper and pulley)	18	82 970 R1	PIN, flywheel to crankshaft dowel
13	103 462	KEY, 3/16 x 1" (Woodruff No. 13) (crankshaft gear)	19	367 275 R91	BEARING SET, crankshaft G-263 501 to 36693
14	367 276 R91	BEARING, crankshaft front (2 halves) (standard)	19	382 357 R91	BEARING SET, crankshaft G-263 36694 Up
14	367 300 R91	BEARING, crankshaft front (2 halves) (.002" undersize)	19	382 359 R91	BEARING SET, crankshaft (.002" undersize)
14	376 670 R91	BEARING, crankshaft front (2 halves) (.010" undersize)	19	382 360 R91	BEARING SET, crankshaft (.010" undersize)
14	376 683 R91	BEARING, crankshaft front (2 halves) (.020" undersize)	19	382 361 R91	BEARING SET, crankshaft (.020" undersize)
14	367 288 R91	BEARING, crankshaft front (2 halves) (.030" undersize)	19	372 444 R91	BEARING SET, crankshaft (.030" undersize)
15	367 279 R91	BEARING, crankshaft intermediate front (2 halves) (standard)			G-263 501 to 36693
			19	382 358 R91	BEARING SET, crankshaft (.030" undersize)
					G-263 36694 Up

§ - Not Furnished Separately



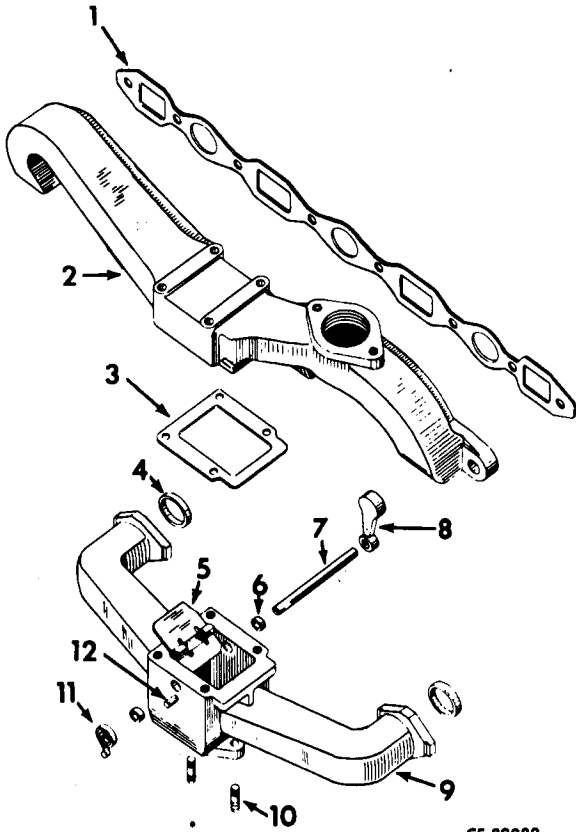
# DIESEL ENGINE



REF. PART NO. NUMBER	DESCRIPTION	REF. PART NO. NUMBER	DESCRIPTION
----------------------	-------------	----------------------	-------------

INTAKE AND EXHAUST MANIFOLDS

INTAKE AND EXHAUST MANIFOLDS—Continued



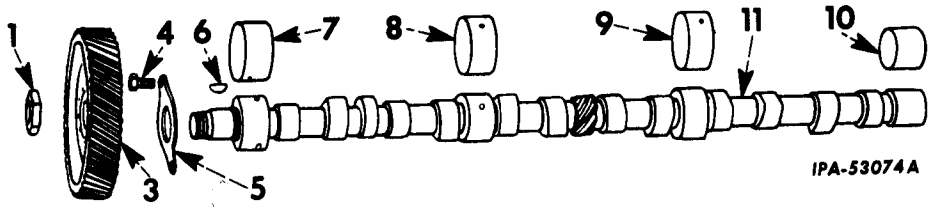
11	82 958 R2	SPRING, thermostat heat control valve
12	141 159	PIN, 3/16 x 1" dowel
	445 671	PLUG, 1/8" sq-hd C.I. PIPE (optional with 445 864)
	445 864	PLUG, 1/8" sq-hd (optional with 445 671)
	107 317	PLUG, exhaust manifold drain hole

1	69 752 R1	GASKET, intake and exhaust manifold
2	368 550 R11	MANIFOLD w/PLUG, 103.317, exhaust 3/16 x 1/2" taper groove PIN 3/8 x 3" hex-hd. cap SCREW (4) 3/8 x 1-1/4" hex-hd. cap SCREW (6) 3/8 x 1-1/2" hex-hd. cap SCREW (2) 13/32 x 7/8" x 7 ga. WASHER (8)
3	85 868 R1	GASKET, intake to exhaust manifold
4	98 573 HA	PILOT, intake manifold
4	138 733 R1	PILOT, intake manifold (2) G-263 501 to 56635 (2) G-263 56636 Up
5	85 700 R1	VALVE, manifold heat control
6	69 443 R1	BUSHING, manifold heat control (2)
7	82 959 R1	SHAFT, manifold heat control valve
8	85 699 R1	WEIGHT, manifold heat control
9	367 261 R11	MANIFOLD ASSEMBLY, intake (Composed of - 2 BUSHING 69 443 R1 1 PLUG 445 671 1 PIN 141 159 1 SHAFT 82 959 R1 1 SPRING 82 958 R2 2 STUD 57 714 D 1 VALVE 85 700 R1 1 WEIGHT 85 699 R1 )
10	12 215 D	STUD, carburetor (2)



# DIESEL ENGINE

REF. PART NO.	PART NUMBER	DESCRIPTION	REF. PART NO.	PART NUMBER	DESCRIPTION
CAMSHAFT AND RELATED PARTS			CAMSHAFT AND RELATED PARTS—Continued		

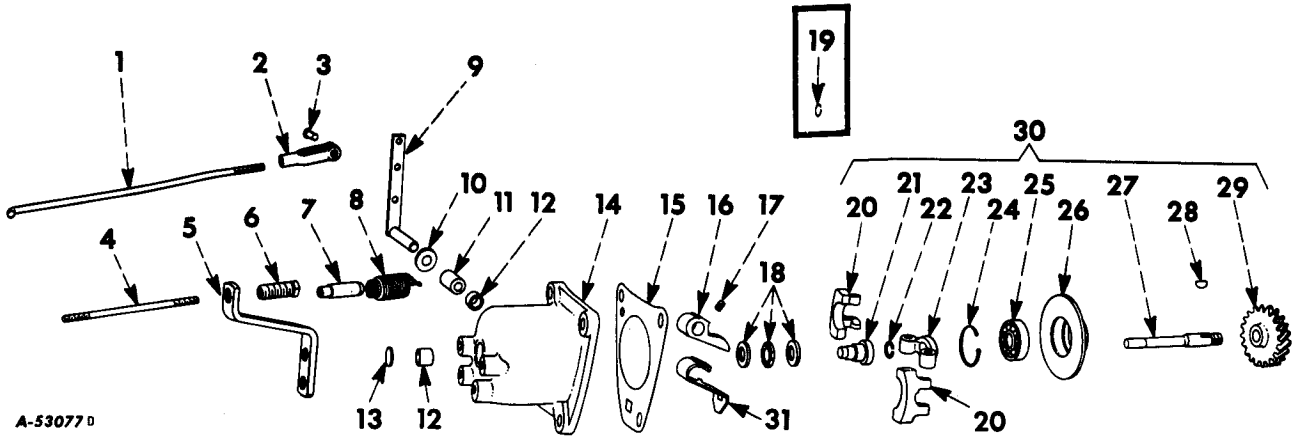


1	16 026 DB	NUT, camshaft gear
2	16 025 D	LOCK, camshaft gear nut
3	312 500 R1	GEAR, camshaft
3	367 240 R1	GEAR, camshaft
4	70 425 R1	BOLT, camshaft thrust plate (2)
5	35 650 HA	PLATE, camshaft thrust
6	127 559	KEY, camshaft gear (Woodruff No. 90)
7	70 259 R2	BEARING, camshaft front
8	70 260 R1	BEARING, camshaft intermediate front
9	70 261 R2	BEARING, camshaft intermediate rear
10	70 262 R1	BEARING, camshaft rear
11	367 229 R1	CAMSHAFT

# DIESEL ENGINE



REF. PART NO. NUMBER	DESCRIPTION	REF. PART NO. NUMBER	DESCRIPTION
GOVERNOR AND CONNECTIONS (I.H.)		GOVERNOR AND CONNECTIONS—Continued (I.H.)	



A-53077 D

1	368 335 R1	ROD, governor to carburetor 1/16 x 7/16" cotter PIN	18	374 794 R91	BALL BEARING, governor thrust G-263 19081 to 53276
2	104 036	FORK, governor to carburetor rod 1/4NF NUT	18	393 405 R1	BALL BEARING, governor thrust G-263 53277 Up
3		PIN, 1/4 x 51/64" rod end (governor to carburetor rod fork) 1/16 x 7/16" cotter PIN	19	251 460 R1	RING, governor sleeve stop G-263 501 to 53276
	305 186 R1	COUPLING, accelerator rod 1/4" NUT	20	367 741 R1 17 053 R1	WEIGHT, governor (2) PIN, 1/4 x 3/8" Esna roll (2)
4	367 659 R1	ROD, governor spring retainer 1/4NF NUT	21	367 668 R2	SLEEVE, governor thrust G-263 501 to 53276
5	367 742 R1	BRACKET, governor spring 5/16 x 1" hex-hd cap SCREW (2) 5/16" lock WASHER (2)	21	387 878 R1	SLEEVE, governor thrust G-263 53277 Up
6	367 660 R1	ADJUSTER, governor spring 1/4NF jam NUT	22	369 477 R1	RING, snap
7	367 740 R1	RETAINER, governor spring	23	367 726 R1	CARRIER, governor weight
8	372 709 R2	SPRING, governor	24	281 907 C1	RING, governor shaft bearing snap
9	367 656 R12	LEVER, w/ROCKSHAFT	25	ST 552	BALL BEARING, governor shaft
10	361 123 R91	OIL SEAL, governor rockshaft	26	367 666 R1	RETAINER, governor bearing
11	369 593 R1	BEARING, governor	27	367 665 R1	SHAFT, governor
12	369 594 R1	BEARING, governor (2)	28	452 560	KEY, governor gear (Woodruff No. 211)
13	172 530	PLUG, 11/16" type No. 1 expansion	29	367 664 R1	GEAR, governor 7/16" lock NUT (Type LLJ)
14	367 651 R21	HOUSING ASSY, governor (Governor B) (Composed of - 2 BEARING 369 594 R1 1 BEARING 369 593 R1 § 1 HOUSING 1 PLUG 172 530 1 OIL SEAL 361 123 R91 ) 3/8 x 1-1/2" hex-hd cap SCREW (3) 3/8" lock WASHER (3) 1/4NF x 1-1/2" slt-rd-hd mach SCREW 1/4NF jam NUT	30	368 939 R93	GEAR w/WEIGHT ASSY, governor
15	367 669 R1	GASKET, governor housing	31	374 795 R1 372 708 R93	SPRING, bumper GOVERNOR ASSY (Composed of - 1 BEARING 393 405 R1 1 FORK 367 653 R1 1 GEAR w/WGT 368 939 R93 1 HOUSING 367 651 R21 1 LEVER 367 656 R12 1 SCREW 368 938 R1 1 SLEEVE 387 878 R1 1 SPRING 374 795 R1 )
16	367 653 R1	FORK, governor thrust	386 010 R91	PACKAGE, governor field service (Composed of - 1 BEARING 369 593 R1 2 BEARING 369 594 R1 1 BEARING ST 552 1 BEARING 393 405 R91 1 FORK 367 653 R1 1 GASKET 367 669 R1 1 LEVER 367 656 R12 1 PLUG 172 530 2 PIN 17 053 R1 1 RING 281 907 C1 1 SCREW 368 938 R1 1 SLEEVE 387 878 R1 1 SPRING 374 795 R1 1 SEAL 361 123 R91 2 WEIGHT 367 741 R1 )	
17	368 938 R1	SCREW, governor thrust fork set			
18	43 481 D	BALL BEARING, governor thrust G-263 501 to 19080			

§ - Not Furnished Separately



# MEMORANDA



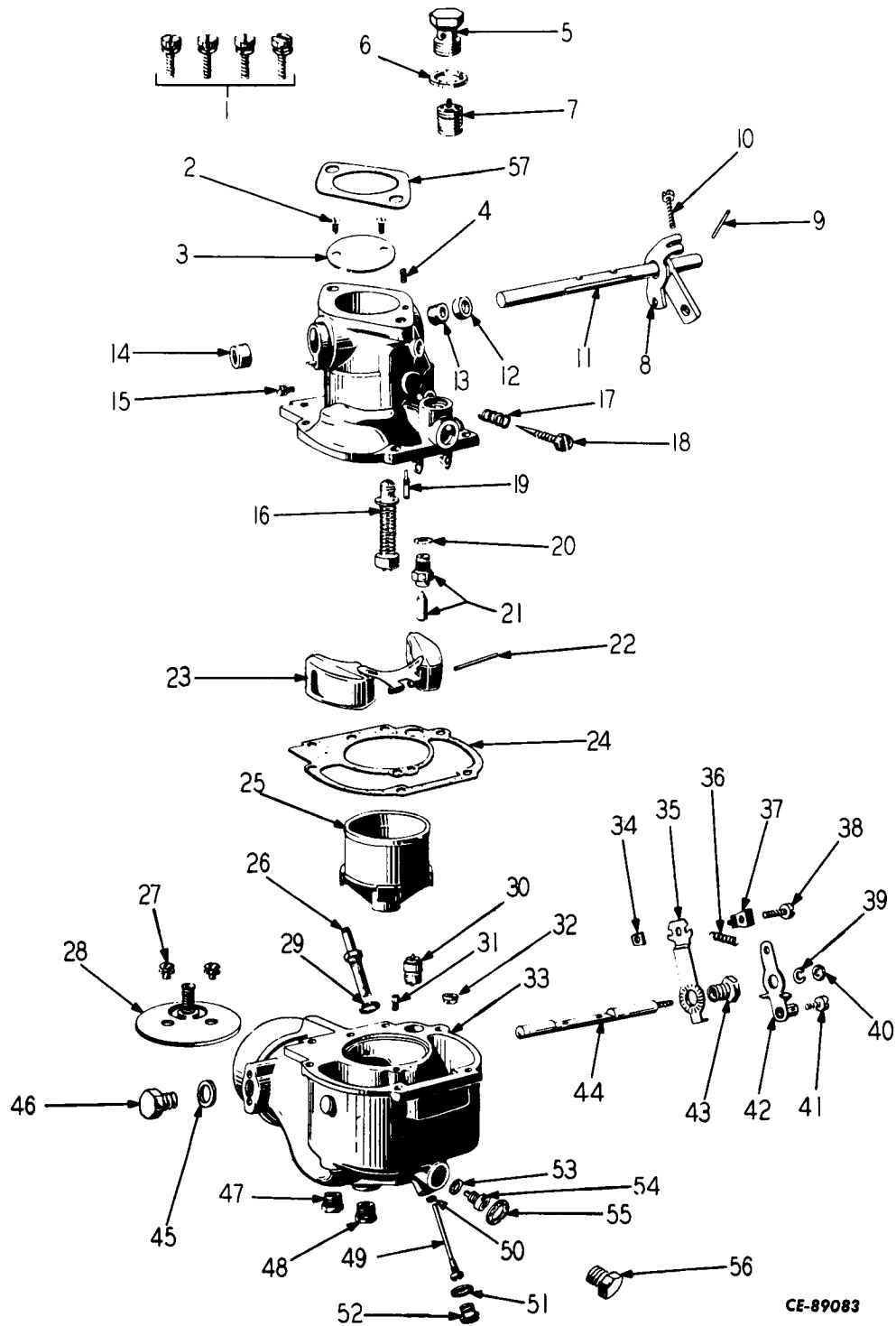


# FUEL SYSTEM



CARBURETOR  
(Zenith)

CARBURETOR—Continued  
(Zenith)



CE-89083

# FUEL SYSTEM



REF. NO.	ZENITH PART NO.	DESCRIPTION	REF. NO.	ZENITH PART NO.	DESCRIPTION
<b>CARBURETOR—Continued (Zenith)</b>			<b>CARBURETOR—Continued (Zenith)</b>		
		NOTE: The parts shown below are Zenith parts unless otherwise specified and should be obtained from a Zenith Carburetor Dealer. The Frank G. Hough Co. will service the complete unit, not its serviceable components.	30	C97-15-13	VALVE ASSY, power jet (w/12841 carburetor)
12840		CARBURETOR (Hough 189 138 HZ) Used on Model H50-B "PAYLOADER" units with G-263 Engines	31	C77-18-30	WELL VENT (w/12840 carburetor)
12841		CARBURETOR (Hough 189 137 H1) Used on Model H30-B "PAYLOADER" units with G-263 Engines	31	C77-18-24	WELL VENT (w/12841 carburetor)
1	T311S12-12	SCREW ASSY, bowl to body (4)	32	CR41-3	CHECK VALVE ASSY
2	T315B5-5	SCREW, plate (with 12840 carburetor) (2)	33	B3-62A	FUEL BOWL ASSY
2	T315S5-5	SCREW, plate (with 12841 carburetor) (2)	34	T21S8	NUT, clamp screw
3	C21-78	PLATE, throttle	35	C109-2-1	BRACKET ASSY, air shutter
4	C138-38	SCREW, vacuum channel	36	C112-6	SPRING, return, air shutter
5	C138-46	FILTER HEAD	37	C110-1	CLAMP, wire
6	T56-3	WASHER, filter head	38	T8S8-10	SCREW, clamp
7	F2X1T5	ELEMENT ASSY, filter	39	T45-8	WASHER, lock
8	CR27-309	LEVER, throttle & stop	40	T22S-8	NUT
9	CT63-9	PIN, taper	41	T8S8-7	SCREW
10	T8S8-10	SCREW, throttle stop	42	C106-2	LEVER ASSY, air shutter
11	C23-654	SHAFT	43	C140-2	SCREW, bracket assembly
12	C131-33	RETAINER, Seal	44	C105-18	SHAFT
13	CT48-10	SEAL, shaft	45	T56-23	WASHER, fiber
14	C131-36	PLUG, shaft hole	46	C138-24	PLUG, shaft hole
15	T301S8-6	SCREW, venturi	47	CT91-3	PLUG, pipe, intake drain
16	C36-61X1	PISTON PUMP ASSY	48	CT91-3	PLUG, pipe, bowl drain
17	C111-17	SPRING, idler adjusting screw	49	C51-20-16	JET ASSY, accelerator (w/12840 carburetor)
18	C46-38	SCREW, idle adjusting	49	C52-12-19	JET ASSY, accelerator (w/12841 carburetor)
19	C55-7-16	JET, idling	50	T56-4	WASHER, fiber, accelerator jet
20	T56-23	WASHER, fiber	51	T56-12	WASHER, fiber lower plug
21	C81-1-40	FUEL VALVE & SEAT ASSY	52	C138-53	PLUG, lower
22	C120-15	AXLE, float	53	T56-24	WASHER, fiber main jet
23	C85-26	FLOAT & HINGE ASSY	54	C52-6-30	JET, main (w/12840 carburetor)
24	C142-21	GASKET, bowl to throttle body	54	C52-6-1-20	JET, main (w/12841 carburetor)
25	B38-24-27	VENTURI	55	T56-23	WASHER, fiber, lower plug
26	C66-48-80	JET ASSY, main discharge (w/12840 carburetor)	56	C138-24	PLUG, lower
26	C66-21-1-60	JET ASSY, main discharge (w/12841 carburetor)	57	C141-4-1	GASKET, flange
27	T315B6-4	SCREW, retaining air shutter (w/12840 carburetor) (2)	K-12840		KIT, repair (for carburetor 12840) Includes Gasket Kit C-181-74 & items 2-4-12-13-14-16-18-19-21-22-27-30-31-32-49-54-57 (X)
27	T315S6-4	SCREW, retaining air shutter (w/12841 carburetor) (2)	K-12841		KIT, repair (for carburetor 12841) Includes Gasket Kit C-181-74 & items 2-4-12-13-14-16-18-19-21-22-27-30-31-32-49-54-57 (X)
28	C101-22	PLATE ASSY, air shutter	C-181-74		GASKET SET, includes items 6-20-24-29-45-50-51-53-55 (X)
29	T56-48	WASHER, fiber	*	H-36	NUT, 3/8-24NF (2) ) Carburetor
			*	WL-16	WASHER, lock, 3/8" (2) ) Mounting
			*	66 453 H	GASKET, carburetor )
30	C97-15-10	VALVE ASSY, power jet (w/12840 carburetor)			

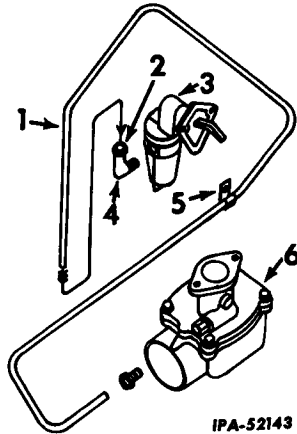
\* - Hough Part Numbers  
(X) - As Required

# FUEL SYSTEM

REF. NO.	PART NUMBER	DESCRIPTION	REF. NO.	PART NUMBER	DESCRIPTION
----------	-------------	-------------	----------	-------------	-------------

FUEL PIPE AND CONNECTIONS

FUEL PIPE AND CONNECTIONS—Continued

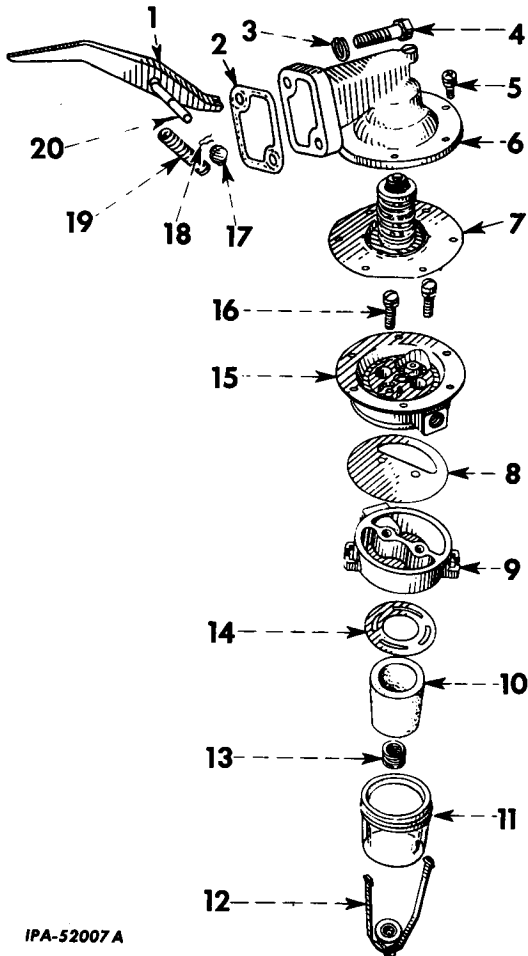


IPA-52143

1	372 498 R1	PIPE, fuel
2	19 885 R1	NUT, coupling (2)
3	84 838 R93	PUMP ASSY, fuel (for components see list of parts under details of "Fuel Pump")
4	24 847 H	ELBOW (at fuel pump)
5	172 915 R1	CLIP, fuel pipe
6		CARBURETOR ASSY (for components see list of parts under details of "Carburetor")

FUEL PUMP

FUEL PUMP—Continued



IPA-52007 A

	84 838 R93	PUMP ASSY, fuel
1	90 623 R1	LEVER, cam
2	612 293 C1	GASKET, pump to crankcase
3		WASHER, 5/16" lock (2)
4		SCREW, 5/16 x 1" hex-hd, CAP (2)
5	90 610 R91	SCREW, w/WASHER
6		Not Furnished Separately (order 84 838 R93)
7	90 625 R91	DIAPHRAGM
8	90 626 R1	DIAPHRAGM, air dome
9	109 317 R1	COVER, filter and valve housing
10	967 640 R21	ELEMENT, filter, glazed ceramic
11	109 313 R11	BOWL, w/GASKET, 90 600 R1
12	109 315 R91	RETAINER, w/SCREW
13	90 606 R1	SPRING, filter
14	90 600 R1	GASKET, filter bowl
15	121 759 R91	HOUSING, valve
16	90 611 R91	SCREW, w/WASHER, valve housing to filter cover
17	90 598 R1	PLUG, cam lever shaft seal
18	90 619 R1	PIN, spring cam lever pin retainer
19	90 603 R1	SPRING, cam lever return
20	90 618 R1	PIN, cam lever
	109 318 R1	WASHER, filter bowl retainer



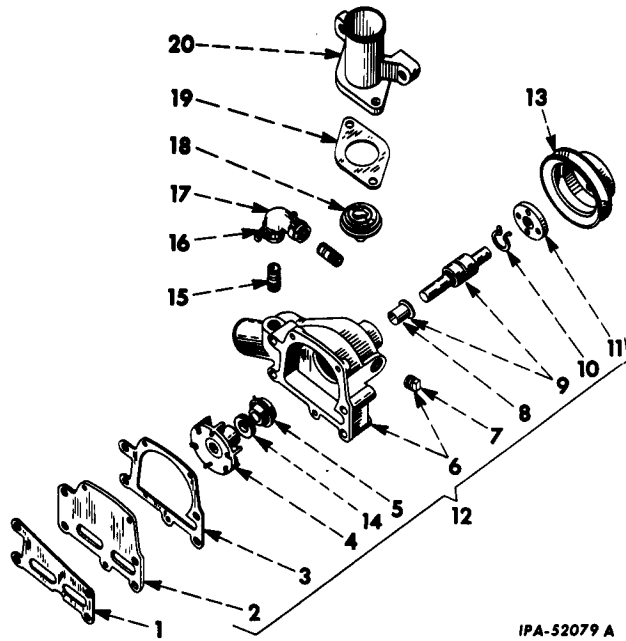
# COOLING SYSTEM

REF. PART NO. NUMBER	DESCRIPTION
----------------------	-------------

REF. PART NO. NUMBER	DESCRIPTION
----------------------	-------------

WATER PUMP, THERMOSTAT AND RELATED PARTS

WATER PUMP, THERMOSTAT AND RELATED PARTS—Continued

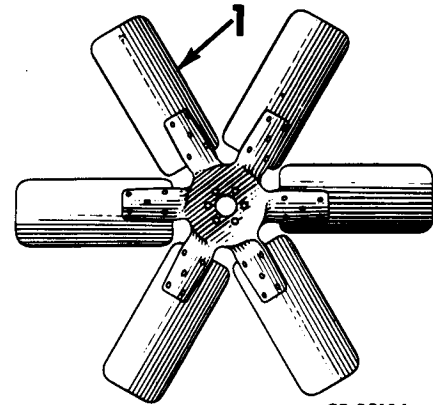


IPA-52079 A

14	265 164 C91	RETAINER and SEAL ASSY, water pump
15	169 193 R1	NIPPLE, water by-pass (2)
16	240 369 R91	CLAMP, hose (2)
17	169 192 R1	ELBOW, water by-pass
18	108 120 R91	THERMOSTAT, 167-172 degree opening temperature
19	368 505 R1	GASKET, water outlet
20	368 504 R1	OUTLET, water 7/16 x 1-1/4" hex-hd cap SCREW 7/16 x 2-1/2" hex-hd cap SCREW 7/16" lock WASHER (2)
374 544 R93	PACKAGE, field service, water pump (Composed of -	
	1 GASKET	69 674 R1
	1 GASKET	69 676 R1
	1 IMPELLER	387 931 R1
	1 RETAINER	102 069 H
	1 RETAINER and SEAL	265 164 C91
	1 SEAL	73 296 R92
	1 SHAFT and BEARING	ST-680
	1 SLINGER	71 351 R1 )
444 660	PLUG, 3/8" sq-soc-hd pipe	

1	69 676 R1	GASKET, water pump
2	69 675 R1	PLATE, water pump 1/4 x 1/2" rd-hd. slit. mach. SCREW (cd or zn-pltd) (3)
3	69 674 R1	GASKET, water pump plate
4	387 931 R1	IMPELLER, water pump (together with SEAL, 265 164 R91, will work for 332 117 R1)
5	73 296 R93	SEAL, water pump
6	318 118 R21	BODY w/three PLUG, 438 159 and PLUG, 444 660 water pump
7	438 159	PLUG, 1/2" sq-hd CI pipe (3) (optional w/444 587)
7	444 587	PLUG, 1/2" sq-hd CI pipe (3) (optional w/438 159)
8	71 351 R1	SLINGER, water pump
9	ST 680	SHAFT and BEARING w/SLINGER, 71 351 R1, water pump
10	102 069 H	RETAINER, bearing
11	368 501 R2	HUB, pulley (optional with 392 713 R1)
11	392 713 R1	HUB, pulley (optional with 368 501 R2)
12	601 816 C91	PUMP ASSY, water 3/8 x 2-1/4" hex-hd. cap SCREW 3/8 x 2-1/2" hex-hd. cap SCREW (2) 3/8" lock WASHER (3)
13	368 502 R1	PULLEY, water pump 1/4NF x 1/2" hex-hd cap SCREW (used with HUB, 368 501 R2 and 392 713 R1)(4) 1/4" lock WASHER (4) 1/4 x 1/2" hex-hd cap SCREW (used with HUB, 368 501 R1) (4)

FAN



CE-89126

1	306 355 R91	FAN, blower (18-1/2" dia. 6 blade) 1/4 x 2" hex-hd cap SCREW 1/4 x 7/8" hex-hd cap SCREW 1/4" lock WASHER
	304 575 R1	SPACER, fan



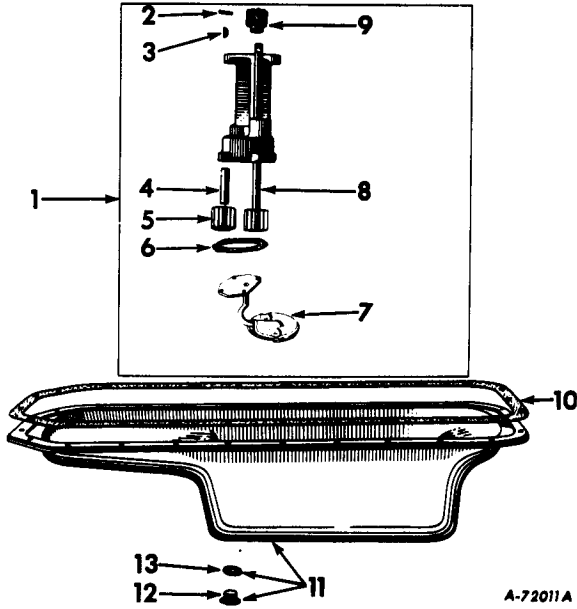


# LUBRICATION SYSTEM



REF. NO.	PART NUMBER	DESCRIPTION
----------	-------------	-------------

CRANKCASE OIL PAN AND OIL PUMP



A-72011A

1	379 138 R91	PUMP ASSY, oil 5/16 x 1" hex-hd cap SCREW (2) 5/16" lock WASHER (2)
2	112 011	PIN, 1/8 x 7/8" sq-end straight
3	103 905	KEY, 1/8 x 5/8" (Woodruff No. 5)
4	35 647 H	SHAFT, idler gear
5	227 713 R1	GEAR, pump body driven
6	69 607 R1	GASKET, oil pump cover (X)
7	379 139 R91	COVER and SCREEN, oil pump 5/16 x 7/8" hex-hd cap SCREW (4) 5/16" lock WASHER (4)
8	230 409 R91	SHAFT and GEAR, oil pump drive
9	69 608 R1	GEAR, oil pump drive
10	369 984 R1	GASKET, crankcase pan
11	323 864 R11	PAN ASSY, crankcase oil 5/16 x 3/4" hex-hd cap SCREW (25) 5/16" lock WASHER (20) 11/32 x 11/16" x 16 ga. WASHER (5)
12	41 300 HA	PLUG, crankcase oil pan drain (optional with 359 875 R1)
12	359 875 R1	PLUG, crankcase oil pan drain (optional with 41 300 HA)
13	3 405 H	GASKET, oil pan drain plug
	445 096	PLUG, 7/8" hex-hd outside filler drain

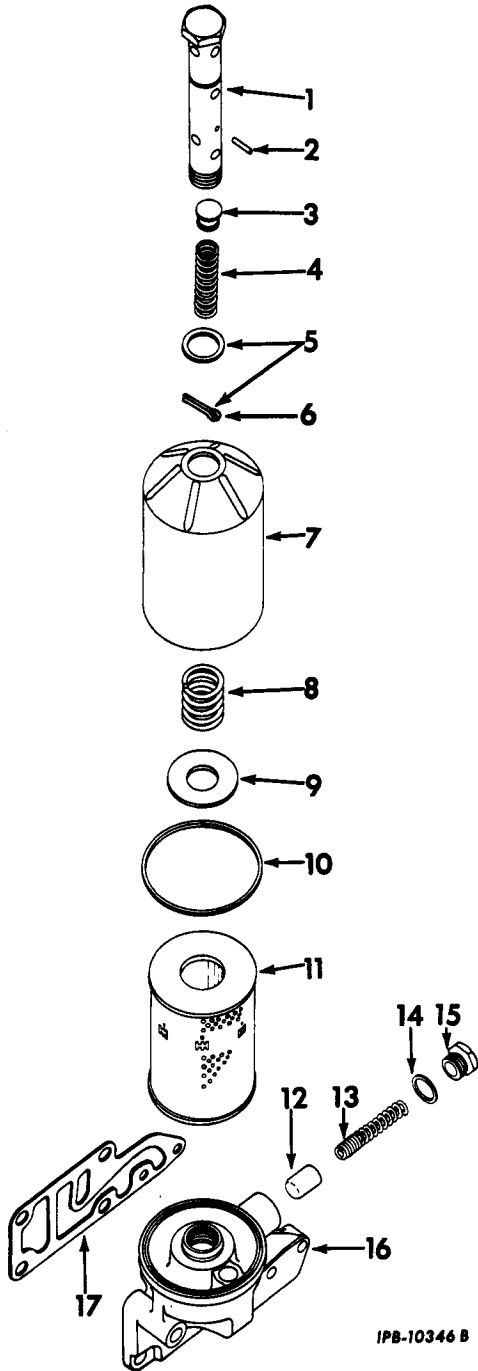
(X) - As Required



# LUBRICATION SYSTEM



REF. PART NO. NUMBER	DESCRIPTION	REF. PART NO. NUMBER	DESCRIPTION
<b>OIL FILTER</b> G-263 501 to 56635		<b>OIL FILTER—Continued</b> G-263 501 to 56635	
		371 236 R91	FILTER ASSY, oil (consists of the following parts)
		1 304 005 R91	TUBE w/PIN, 17 141 R1, SPRING, 304 009 R1 and VALVE, 304 008 R1, oil filter center
		2 17 141 R1	PIN, by-pass valve and spring retainer (5/32 x 1" Esna)
		3 304 008 R1	VALVE, oil filter by-pass
		4 304 009 R1	SPRING, oil filter by-pass valve
		5 320 273 R91	PACKAGE, oil filter center tube
		6	PIN, 1/16 x 1-1/4" cotter
		7 303 998 R1	CASE, oil filter
		8 304 011 R1	SPRING, oil filter element retaining
		9 304 010 R1	WASHER, oil filter element retaining spring
		10 304 854 R1	GASKET, oil filter case
		11 279 994 R91	ELEMENT, oil filter
		12 61 261 VA	VALVE, oil pressure relief
		13 49 946 HA	SPRING, oil pressure relief valve
		14 3 405 H	GASKET, oil pressure relief valve cap
		15 61 263 VA	CAP, oil pressure relief valve
		16 371 237 R11	BASE ASSY, oil filter (Composed of - § 1 BASE 1 CAP 61 263 VA 1 GASKET 3 405 H 1 PLUG 17 191 R1 1 SPRING 49 946 HA 1 VALVE 61 261 VA ) 5/16 x 1-5/8" hex-hd cap SCREW (2) 7/16 x 1" hex-hd cap SCREW 7/16 x 1-1/4" hex-hd cap SCREW 7/16 x 2-3/4" hex-hd cap SCREW (2) 5/16" lock WASHER (2)
		17 349 364 R1	GASKET, oil filter base (not furnished as part of 371 236 R91)
		17 191 R1	PLUG, 1/4" hex-hd pipe drain



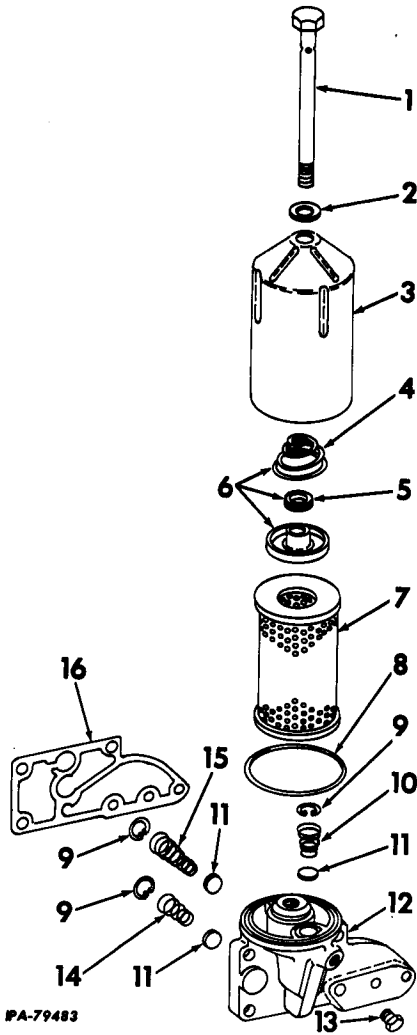
IPB-10346 B

§ - Not Furnished Separately.



# LUBRICATION SYSTEM

REF. PART NO. NUMBER	DESCRIPTION	REF. PART NO. NUMBER	DESCRIPTION
OIL FILTER G-263 56636 Up		OIL FILTER-Continued G-263 56636 Up	



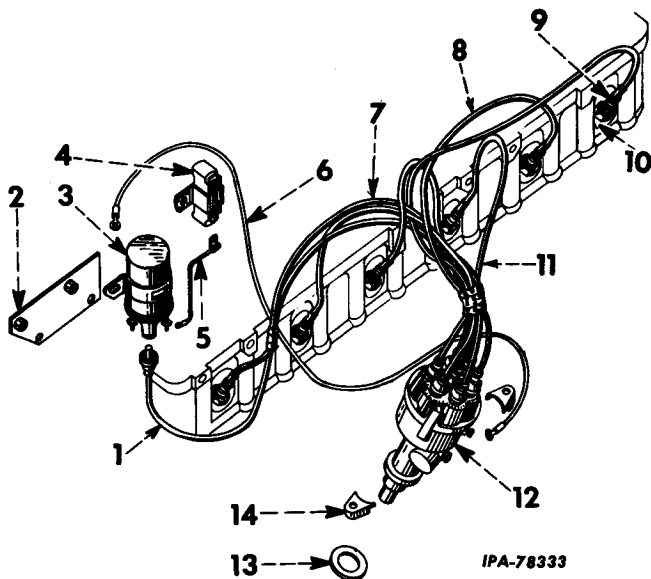
384 522 R92	FILTER ASSY, oil (Composed of -		
1	BASE	384 523 R12	
1	CASE	384 529 R1	
1	ELEMENT	279 994 R91	
1	GASKET	304 854 R1	
1	GASKET	384 532 R1	
1	RETAINER	384 533 R91	
1	TUBE	384 530 R11	
1	384 530 R11	TUBE, oil filter center	
2	384 532 R1	GASKET, center tube	
3	384 529 R1	CASE, lubricating oil filter	
4	384 536 R1	SPRING, element hold-down	
5	384 535 R1	GROMMET, element retaining washer	
6	384 533 R91	RETAINER ASSY, element (consists of GROMMET, 384 535 R1, SPRING, 384 536 R1 and WASHER)	
7	279 994 R91	ELEMENT, oil filter	
8	304 854 R1	GASKET, oil filter case	
9	303 322 R1	RING, snap	
10	384 525 R1	SPRING, check valve	
11	384 528 R1	VALVE, lubricating oil filter base (3)	
12	384 523 R12	BASE ASSY, oil filter (Composed of -	
	§ 1	BASE	
	1	PLUG	397 299 R1
	3	RING	303 322 R1
	1	SPRING	384 525 R1
	1	SPRING	384 526 R1
	1	SPRING	384 527 R1
	3	VALVE	384 528 R1
		5/16 x 1-1/2" hex-hd cap SCREW (2)	
		7/16 x 1-1/4" hex-hd cap SCREW (3)	
		7/16 x 1-1/2" hex-hd cap SCREW	
		5/16" lock WASHER (2)	
13	397 299 R1	PLUG, oil filter base	
14	384 526 R1	SPRING, pressure regulating	
15	384 527 R1	SPRING, element by-pass	
16	384 537 R2	GASKET, oil filter base	

§ - Not Furnished Separately

# ELECTRICAL SYSTEM



REF. NO.	PART NUMBER	DESCRIPTION	REF. NO.	PART NUMBER	DESCRIPTION
SPARK PLUGS, COIL, CABLES AND DISTRIBUTOR (Battery Ignition)			SPARK PLUGS, COIL, CABLES AND DISTRIBUTOR—Continued (Battery Ignition)		
			9		SPARK PLUG, (Prestolite 18-8) (normal service) (6)
			9		SPARK PLUG, (Champion D-9) (severe service) (6)
			9		SPARK PLUG, (AC-C83) (severe service) (6)
			9		SPARK PLUG, (Auto-Lite BT-4) (severe service) (6)
			9		SPARK PLUG, (Prestolite 18-3) (severe service) (6)
			9		SPARK PLUG, (Champion D-6) (extreme severe service) (6)
			9		SPARK PLUG, (AC-C81) (extreme severe service) (6)
			9		SPARK PLUG, (Auto-Lite BT-3) (extreme severe service) (6)
			9		SPARK PLUG, (Prestolite 18-2) (extreme severe service) (6)
			10	37 762 H	GASKET, spark plug (6)
			11	318 056 R91	CABLE, spark plug (No. 3 and 4) (2)
			12		DISTRIBUTOR ASSY (for components see list of parts under details of "Distributor")
			13	353 936 R2	GASKET, distributor
			14	353 937 R1	CLAMP, distributor (2) 5/16 x 7/8" hex-hd cap SCREW (2) 5/16" lock WASHER (2)
1	318 437 R91	CABLE, coil to distributor (high tension) (for use with COIL, Delco-Remy No. 1115082)	370 535 R1		CLIP, coil to distributor cable (for use with COIL, 1115082)
2	370 534 R11	BRACKET, ignition coil (for use with COIL, Delco-Remy No. 1115082) 7/16 x 1/2" hex-hd cap SCREW (2) 7/16 x 7/8" hex-hd cap SCREW (2) 7/16" lock WASHER (2) (assembled in left front of cylinder head) 15/32" lock WASHER (2) (assembled in left front of cylinder)	324 460 R1		RETAINER, spark plug wire (2)
3		COIL, ignition (Delco-Remy No. 1115082) No. 10NF cd-pltd NUT (2) 5/16 x 1/2" hex-hd cap SCREW (2) No. 10 cd-pltd lock WASHER (2) 11/32 x 11/16" x 16 ga. WASHER	31 987 D		SPACER (For use with resistor Delco-Remy No. 1957154 only)
4		RESISTOR, ignition coil (Delco-Remy No. 1957154) (together with SPACER, 31 987 D, will work for resistor, Delco-Remy No. 1928016)			
5	370 594 R91	CABLE, coil to resistor			
6	368 267 R91	CABLE, coil to distributor (for use with COIL, Delco-Remy No. 1115082)			
7	312 354 R91	CABLE, spark plug (No. 1 and 6) (2)			
8	266 263 R91	CABLE, spark plug (No. 2 and 5) (2)			
9		SPARK PLUG (Champion D-182) (light or moderate service) (6)			
9		SPARK PLUG, (Prestolite 18-82) (light or moderate service) (6)			
9		SPARK PLUG, (Champion D-16) (intermediate service) (6)			
9		SPARK PLUG, (Prestolite 18-81) (intermediate service) (6)			
9		SPARK PLUG, (Champion 8 com.) (normal service) (6)			
9		SPARK PLUG, (AC-85) (normal service)(6)			
9		SPARK PLUG, (Auto-Lite BT-8) (normal service) (6)			

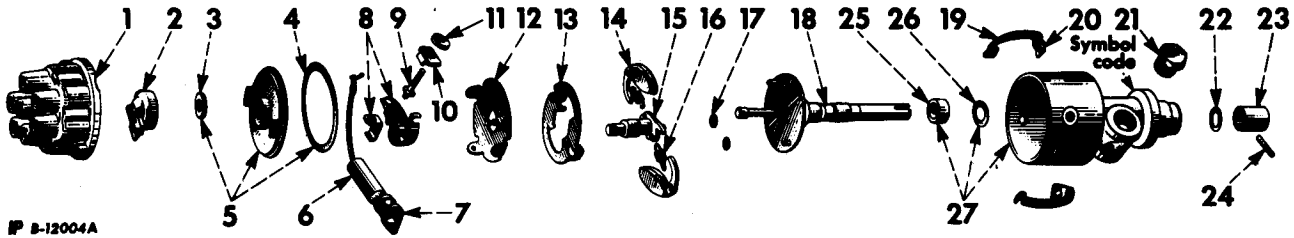


# ELECTRICAL SYSTEM

REF. NO.	PART NUMBER	DESCRIPTION	REF. NO.	PART NUMBER	DESCRIPTION
----------	-------------	-------------	----------	-------------	-------------

DISTRIBUTOR

DISTRIBUTOR—Continued



# B-12004A

367 839 R92	DISTRIBUTOR ASSY (order 372 867 R92) G-263 501 to 56635	16	362 726 R1	SPRING, governor (set of two) (used with DISTRIBUTOR, 388 592 R91)	
372 867 R92	DISTRIBUTOR ASSY, (will work for 367 839 R92) G-263 501 to 56635	17	352 293 R1	SPACER, weight arm (4)	
388 592 R91	DISTRIBUTOR ASSY G-263 56636 Up	18	368 059 R91	SHAFT, distributor (used with DISTRIBUTOR, 372 867 R92)	
1	368 062 R91	CAP, distributor	18	388 593 R91	SHAFT, distributor (used with DISTRIBUTOR, 388 592 R91)
2	353 896 R91	ROTOR, distributor	19	368 096 R1	SPRING, distributor cap (2)
3	353 901 R2	SEAL, breaker cover felt	20	353 895 R1	SUPPORT, distributor cap spring (2) No. 8 x 3/8" slt-rd-hd mach SCREW (2) No. 8 lock WASHER (2)
4	384 830 R1	GASKET, cover	21	369 013 R1	PLUG, distributor housing (not used with TACHOURMETER ATTACHMENT)
5	384 831 R11	COVER w/SEAL, 353 901 R2 and GASKET, 384 830 R1, BREAKER	22	368 054 R1	WASHER, distributor thrust lower
6	353 903 R92 131 949	CONDENSER No. 8-32 x 3/16" cd-zn-pltd slt-fil-hd mach SCREW	23	368 053 R1	COLLAR, distributor shaft
	121 841	No. 8 cd-zn-pltd med lock WASHER	24	354 552 R1	PIN, distributor shaft collar
7	353 905 R1	CLAMP, condenser (used with DISTRIBUTOR, 372 867 R92) No. 8 x 3/16" slt-fil-hd mach SCREW No. 8 lock WASHER	25	368 057 R91	OIL SEAL, distributor shaft
8	353 172 R91	POINT SET, breaker arm and stationary (used with DISTRIBUTOR, 367 839 R92)	26	368 055 R1	WASHER, distributor thrust upper
8	372 951 R91	POINT SET, breaker arm and stationary (used with DISTRIBUTOR, 372 867 R92 and 388 592 R91) No. 8 x 3/16" slt-pan-hd mach SCREW	27	368 051 R11	HOUSING w/WASHER, 368 055 R1, and OIL SEAL, 368 057 R91, distributor PLUG, 1/8" slt-hdls pipe
	21 394 D	WASHER, stationary point terminal	125 947		
9	353 907 R1	SCREW, terminal	355 460 R1	FELT, cam oil hole	
10	353 906 R1	INSULATOR, spring anchor terminal	21 372 D	TUBE, of distributor grease	
11	251 538 R1	WASHER, terminal insulating No. 8 type "F" NUT (3) No. 8 lock WASHER (3)			
12	352 277 R11	PLATE, breaker (used with DISTRIBUTOR, 367 839 R92)			
12	372 868 R11	PLATE, breaker (used with DISTRIBUTOR, 372 867 R92 and 388 592 R91) No. 8 x 3/8" rd-hd slt-mach SCREW No. 8 lock WASHER			
13	353 920 R1	GUARD, governor weight No. 8 x 1/4" slt-fil-hd mach SCREW (2) No. 8 lock WASHER (2)			
14	353 917 R91	ARM, weight (2)			
15	356 192 R91	CAM			
16	368 102 R91	SPRING, governor (set of two) (used with DISTRIBUTOR, 367 839 R92)			
16	373 331 R91	SPRING, governor (set of two) (used with DISTRIBUTOR, 372 867 R92)			



# ELECTRICAL SYSTEM

REF. DELCO-REMY  
NO. PART NO.

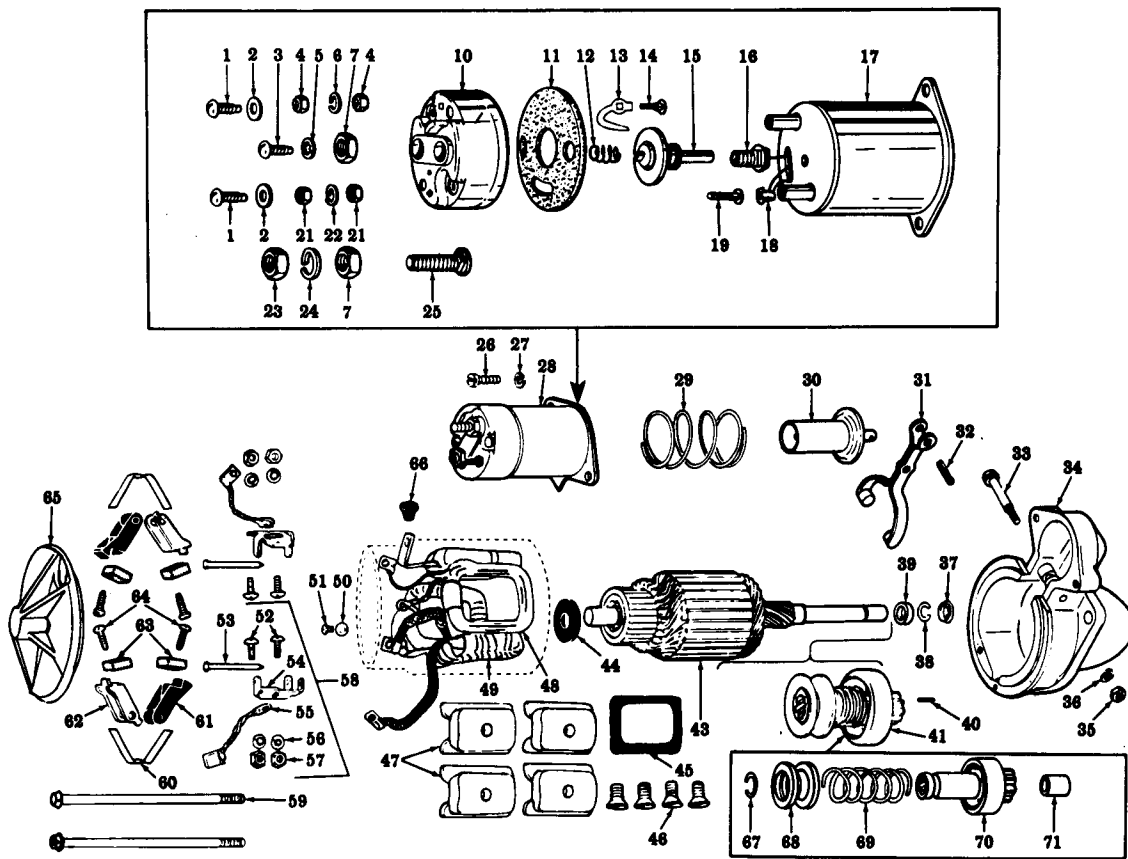
DESCRIPTION

REF. DELCO-REMY  
NO. PART NO.

DESCRIPTION

CRANKING MOTOR  
(Delco-Remy)

CRANKING MOTOR—Continued  
(Delco-Remy)



1107350	MOTOR ASSY, cranking 3/8" NUT No. 8 NUT No. 10NF NUT 3/8 x 1-1/4" hex-hd cap SCREW (3) 3/8" lock WASHER (3) 3/8" (cd or zn-pltd) lock WASHER No. 8 (cd or zn-pltd) lock WASHER No. 10 (cd or zn-pltd) lock WASHER	14	1950069	STUD ("R" terminal) No. 10NF	
2	1923935	WASHER, cover attaching screw (2)	15	1956226	CONTACT w/PUSH ROD
3	1949653	SCREW, field lead attaching	16	1950120	STUD, 3/8" terminal
4		NUT, No. 10NF ("R" terminal) (2)	17		Not Furnished Separately
5		WASHER, No. 10 internal lock	18	1949538	CLIP ("S" terminal)
6	1946143	WASHER, lock	19	1950069	STUD ("S" terminal)
7		NUT, 3/8" (2)	21		NUT, No. 10NF ("S" terminal) (2)
10	1963525	COVER, switch	22	1946143	WASHER, lock
11	1950070	INSULATOR, cover	23	1904419	NUT, 3/8" (2)
12	1853342	SPRING, contact return	24		WASHER, 3/8" lock
13	1935645	CONTACT ("R" terminal)	25	1950061	STUD, 3/8" terminal
			26		SCREW, 1/4 x 1/2" slt-rd-hd (2)
			27		WASHER, 1/4" lock (2)
			28	1114356	SWITCH SOLENOID ASSY
			29	1958679	SPRING, plunger return
			30	1941113	PLUNGER, solenoid switch

Always Give CRANKING MOTOR NUMBER When Ordering Parts.



## ELECTRICAL SYSTEM

REF. NO.	DELCO-REMY PART NO.	DESCRIPTION	REF. NO.	DELCO-REMY PART NO.	DESCRIPTION
CRANKING MOTOR—Continued (Delco-Remy)			CRANKING MOTOR—Continued (Delco-Remy)		
31	1932205	LEVER, shift	820148		BUSHING, center bearing
32	455106	PIN, shift lever	1952427		GASKET (between switch and housing)
33	1932197	STUD, shift lever	820149		PLATE, center bearing
34	1950306 1862383	HOUSING w/BUSHING, 1862383, drive BUSHING, drive end	125947		PLUG, 1/8" pipe (drive end)
35	1926640	NUT, shift lever stud	821453		WASHER (between center bearing and motor drive)
36		WASHER, 5/16" lock	1909560		WICK (drive end)
37	1838568	COLLAR, drive end spacing			
38	1928022	RING, pinion stop retainer snap (drive end)			
39	1928021	COLLAR, pinion stop (drive end)			
40	809593	PIN, dowel (drive end)			
41	1952410	DRIVE ASSY, motor			
43	1950307	ARMATURE			
44	833602	WASHER, commutator end spacing			
45	1927853	INSULATION, field coil (4)			
46	1913960	SCREW, pole shoe (4)			
47	1931129	SHOE, pole (4)			
48	1935131	COIL, field shunt			
49	1935128	COIL, field (3 coils)			
50	1962276	WASHER, lock (center bearing attaching)(2)			
51	132900	SCREW, center bearing attaching (2)			
52		SCREW, No. 11 x 1/2" slt-truss-hd (4)			
53	1938058	PIN, support attaching (2)			
54		SUPPORT (Not Furnished Separately)			
55	1926605	LEAD, brush ground (2)			
56		WASHER, No. 10 lock (4)			
57		NUT, No. 10 (4)			
58	1928015	KIT, brush holder support (2)			
59	1939970	BOLT, thru (2)			
60	1926622	SPRING, brush (2)			
61	1926618	HOLDER, brush insulated (2)			
62	1940477	HOLDER, brush ground (2)			
63	1906945	BRUSH (4)			
64	1926648	SCREW, brush attaching (4)			
65	1928966	FRAME, commutator end			
66	1935168	GROMMET, lead (in field frame)			
67	37521	RING, snap			
68	1838436	COLLAR, motor drive			
69	1931477	SPRING, motor drive			
70		GEAR (Not Furnished Separately)			
71	1873796	BUSHING, oilless			

Always Give CRANKING MOTOR NUMBER When Ordering Parts.

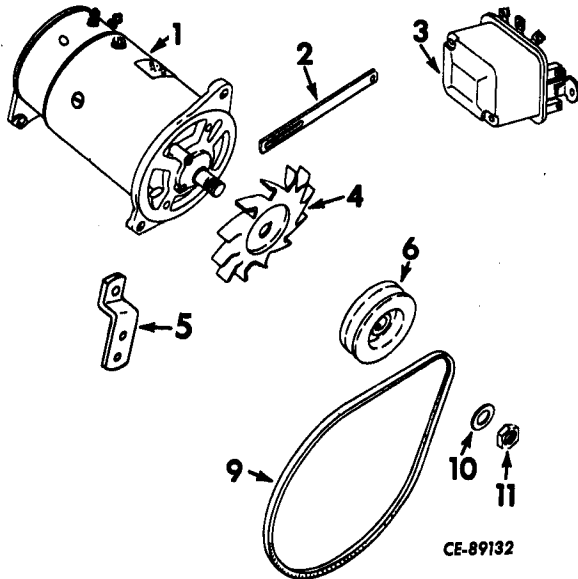


# ELECTRICAL SYSTEM



REF. NO.	PART NUMBER	DESCRIPTION
----------	-------------	-------------

GENERATOR, VOLTAGE REGULATOR, BELT AND CONNECTIONS



- |    |                        |  |
|----|------------------------|--|
| 1  |                        | GENERATOR ASSY (Delco-Remy No. 1102059) (12 volt) (for components see list of parts under details of "Generator")  |
| 2  | 312 068 R1<br>61 252 H | STRAP, generator adjusting<br>SPACER, generator adjusting<br>7/16 x 3/4" hex-hd cap SCREW<br>7/16" lock WASHER<br>5/16 x 3/4" hex-hd cap SCREW<br>5/16" lock WASHER<br>11/32 x 11/16" No. 16 ga WASHER       |
| 3  |                        | REGULATOR, voltage (Delco-Remy No. 1119003E) (12 volt) (for components see list of parts under details of "Voltage Regulator")<br>1/4NF NUT (2)<br>1/4NF x 3/4" hex-hd cap SCREW (2)<br>1/4" lock WASHER (2) |
| 4  |                        | FAN, generator (Delco-Remy No. 1944437)  |
| 5  | 373 486 R1             | BRACKET, generator<br>5/16 x 1" hex-hd cap SCREW (2)<br>5/16" lock WASHER (2)  |
| 6  |                        | PULLEY, generator (Delco-Remy No. 1946716)   |
| 9  | 372 596 R1             | BELT, water pump and generator fan<br>(optional with BELT, 378 113 R1)   |
| 9  | 378 113 R1             | BELT, water pump and generator fan<br>(optional with BELT, 372 596 R1)   |
| 10 |                        | WASHER, generator drive shaft lock<br>(Delco-Remy No. 804000)  |
| 11 |                        | NUT, generator drive shaft<br>(Delco-Remy No. 986915)  |





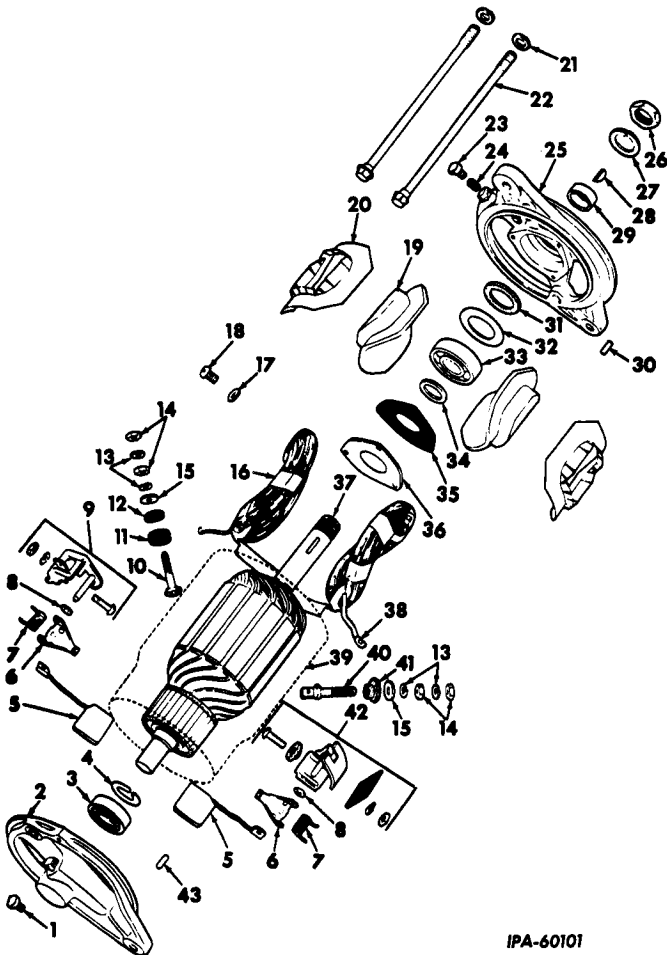
# ELECTRICAL SYSTEM

REF. NO.	DELCO-REMY PART NO.	DESCRIPTION
----------	---------------------	-------------

REF. NO.	DELCO-REMY PART NO.	DESCRIPTION
----------	---------------------	-------------

**GENERATOR**  
(Delco-Remy) (12 Volts)

**GENERATOR—Continued**  
(Delco-Remy) (12 Volts)



IPA-60101

1102059		GENERATOR ASSY (12 volt) 5/16" NUT 5/16 x 1" hex-hd cap SCREW 5/16 x 1-1/8" hex-hd cap SCREW 5/16" lock WASHER (3)
1	125609	OILER, commutator end
2	1925204	FRAME, commutator end
3	904751	BEARING, commutator end ball
4	1929959	RING, commutator end bearing
5	1932506 1904377	BRUSH (2) No. 6 x 1/4" rd-hd cap SCREW WASHER, lock
6	1944373	ARM, brush (2)
7	1908829	SPRING, brush (2)
8	1904368	WASHER, space (2)
9	1925378	HOLDER, ground brush (package)
10	1858749	STUD, "F" terminal

11	1885090	BUSHING, insulating ("F" terminal)
12	1858753	WASHER, insulating ("F" terminal)
13	1914579	WASHER, terminal stud lock (4)
14		NUT, No. 12 (4)
15	826319	WASHER, flat (2)
16	1922701	COIL, field
17		WASHER, 1/4" lock
18	225577	SCREW, 1/4 x 3/8" fil-hd slt cap, field frame
19	1939902 1913960	SHOE, pole (2) SCREW, pole shoe (2)
20	1912073	INSULATOR, field coil
21	9421424	WASHER, thru bolt
22	809763	BOLT, thru
23	125609	OILER, drive end
24		NOT USED
25	1953882	FRAME, drive end
26	1915172	NUT, drive end hex.
27	1915265	WASHER, drive end nut lock
28	124545	KEY, Woodruff, 1/8 x 5/8"
29	1858603	COLLAR, spacing
30	809593	PIN, drive end dowel
31	809961	WASHER, drive end felt
32	819104	PLATE, drive end felt retainer
33	907503	BEARING, drive end ball
34	809945	WASHER, drive end inner space
35	1912008	GASKET, bearing retainer
36	1911263 1904370 1962276	PLATE, bearing retainer, drive end SCREW, retainer plate WASHER, lock
37	1940161	ARMATURE
38	200382	CLIP, terminal to brush
39		CASE (Not Furnished Separately)
40	1923284	STUD ("A" terminal)
41	1921362	BUSHING, insulating ("A")
42	1925379	HOLDER, insulated brush (package)
43	809062 815042 1880641	PIN, commutator end dowel WASHER, felt OILER, CE and DE

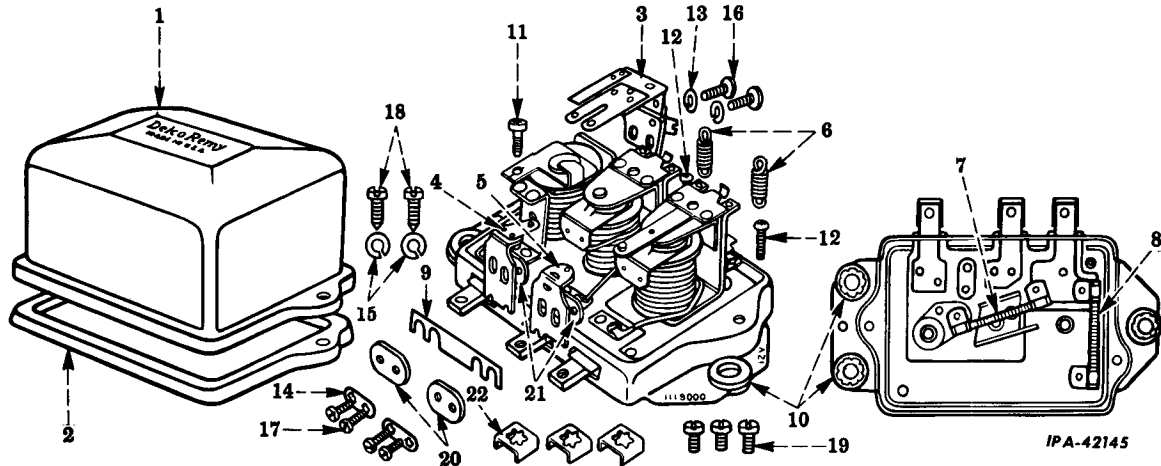
Always Give GENERATOR NUMBER When Ordering Parts.



# ELECTRICAL SYSTEM



REF. DELCO-REMY NO.	PART NO.	DESCRIPTION	REF. DELCO-REMY NO.	PART NO.	DESCRIPTION
VOLTAGE REGULATOR (Delco-Remy)			VOLTAGE REGULATOR—Continued (Delco-Remy)		



	1119003	REGULATOR, voltage
1	1931886	COVER
2	1931887	GASKET, cover
3	1939646	ARMATURE, relay
4	1949136	CONTACT, current regulator (2)
5	1949136	CONTACT, voltage regulator
6	1912176	SPRING (2)
7	1910174	RESISTOR, 40 ohms
8	1910176	RESISTOR, 130 ohms
9	1878504	CONNECTOR
10	1879663	GROMMET (3)
11	1912159	SCREW, adjusting
12	1944590	SCREW, adjusting (2)
13	1904377	WASHER, lock, relay screw (2)
14	1878505	WASHER, lock, contact screw (2)
15	1938522	WASHER, cupped, cover screw (2)
16	1924764	SCREW & LOCK WASHER, armature attach. (2)
17	1878516	SCREW, contact attach. (4)
18	1943386	SCREW, cover (2)
19	1914800	SCREW, terminal (3)
20	1922599	WASHER, insul. w/bushings (2)
21	1878507	WASHER, insul. contact screw (2)
22	1878503	CLAMP, terminal (3)
	274577	SCREW, ground
	1855978	CLAMP, ground screw

Always Give VOLTAGE REGULATOR Number When Ordering Parts.



## MISCELLANEOUS



REF. NO.	PART NUMBER	DESCRIPTION	REF. NO.	PART NUMBER	DESCRIPTION
ASSORTED GASKET SETS (Engine)			PRODUCT GRAPHICS		
372 770 R93		GASKET SET, valve grinding includes 8 gaskets as follows -			The following identification and instructional Product Graphics are available for the G-263 Engine
31 336 D		GASKET, carburetor	1 001 071 R2		PRODUCT GRAPHIC, generator warning
164 418 R1		GASKET, cylinder head	2 752 048 R1		PRODUCT GRAPHIC, engine shut-down (for units painted other than Red)
69 752 R1		GASKET, intake and exhaust manifold	2 751 144 R1		PRODUCT GRAPHIC, oil filter instructions
85 868 R1		GASKET, intake to exhaust manifold			
369 983 R1		GASKET, valve cover			
368 505 R1		GASKET, water outlet			
164 420 R1		GROMMET, valve cover			
111 024 R1		SEAL, intake valve stem			
866 834 R1		DEFLECTOR, intake and exhaust valve stem oil			
381 737 R92		GASKET SET, engine includes 21 gaskets as follows - (together with 372 770 R93 will work for GASKET SET 372 771 R91)			
369 981 R1		GASKET, breather pipe			
378 237 R1		GASKET, crankcase front cover			
367 574 R1		GASKET, crankcase front cover			
398 024 R1		GASKET, crankcase front plate			
369 984 R1		GASKET, crankcase pan			
353 936 R2		GASKET, distributor			
42 965 V		GASKET, filter drain plug			
612 293 C1		GASKET, fuel pump			
367 669 R1		GASKET, governor housing			
371 238 R1		GASKET, oil filter base			
304 854 R1		GASKET, oil filter case			
384 532 R1		GASKET, oil filter center tube			
3 405 H		GASKET, oil pan drain plug			
3 405 H		GASKET, oil pressure relief valve cap			
69 607 R1		GASKET, oil pump cover (2)			
369 982 R1		GASKET, valve push rod cover			
69 674 R1		GASKET, water pump plate			
69 676 R1		GASKET, water pump			
384 535 R1		GROMMET, element retainer washer			
352 221 R1		"O" RING, oil pump screen seal			
320 273 R91		PACKAGE, oil filter center tube gasket			
103 364		PIN, retaining spring washer 1/16 x 1-1/4" cotter PIN			
310 665 R1		PLUG, rear bearing cap (2)			
352 221 R1		SEAL, oil pump screen "O" ring			









# FOR YOUR PROTECTION

## Always Use IH or HOUGH Parts

**BECAUSE**

# OEQ

**OEQ** means Original Equipment Quality, and is a factor to be considered above price, because the real cost must be calculated in terms of service life.

**IH** or **HOUGH** will not compromise in engineering, specifications, or fabrication. Such compromises sacrifice long term efficiency and economy in favor of short term "savings." **OEQ** parts are produced, distributed, and sold with the same built-in quality features you purchased with the original machine.

Though **IH** or **HOUGH** **OEQ** parts are competitively priced, you can get "look alikes" that are priced initially lower. However, the real consideration is not price, but value, and that is where **IH** and **HOUGH** **OEQ** parts for our machines will prove most economical.

International Harvester distributors or dealers have well-equipped service departments staffed by trained servicemen. To assure yourself of top quality in parts and service, rely on your IH distributor's or dealer's Men of Service.