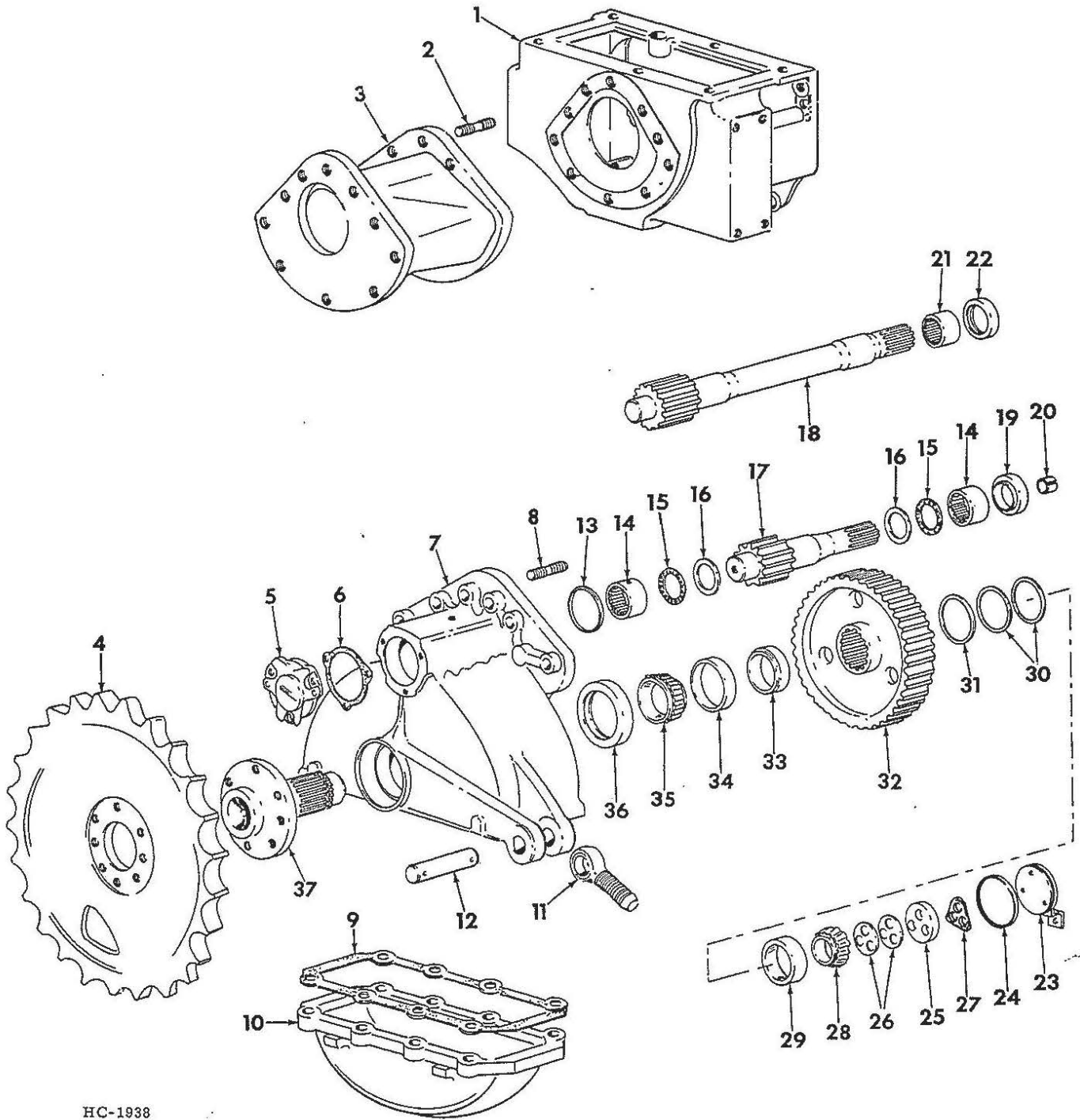


REF. NO.	PART NUMBER	DESCRIPTION	TC-210
----------	-------------	-------------	--------

FINAL DRIVE AND SPROCKET

REF. NO.	PART NUMBER	DESCRIPTION	TC-210
----------	-------------	-------------	--------

FINAL DRIVE AND SPROCKET -CONTINUED



HC-1938

1	852 386 C91	HOUSING ASSY, STEERING CLUTCH RH-SHOWN-
1	852 385 C91	HOUSING ASSY, STEERING CLUTCH LH REFER TO STEERING DRIVE
2	676 108 R1	STUD, GAUGE SPACER MOUNTING -14-
	225 861	-68 INCH TRACK WIDTH- NUT, 5/8-18 HEX TYPE 8 -14-

3	850 696 C1	SPACER, FINAL DRIVE GAUGE -2-
	444 692	-68 INCH TRACK WIDTH-
	223 817	PLUG, 1/4 C-2 HEX SKT PIPE -2-
	225 861	BOLT, 5/8-18 X 3-1/2 HEX TYPE 8 -6-
		NUT, 5/8-18 HEX TYPE 8 -6-

REF. NO.	PART NUMBER	DESCRIPTION	TC-210
FINAL DRIVE AND SPROCKET -CONTINUED			
4	852 474 C1 223 809	SPROCKET ASSY, TRACK DRIVE -2- BOLT, 5/8 X 1-1/2 HEX-HD TYPE 8 -16-	
5	676 863 R1 180 124 120 382	RETAINER, PINION SHAFT -2- BOLT, 3/8-16 X 1-1/4 HEX-HD -6- WASHER, 3/8 LOCK -6-	
6	676 865 R1	SHIM, RETAINER - .010 -2-	
7	852 623 C91	HOUSING ASSY, FINAL DRIVE RH -SHOWN- -CONSISTS OF \$ 1 HOUSING RH 852 519 C1 1 CUP 625 743 C1 1 CUP 529 453 R1 2 PLUG 444 692	
7	852 622 C91	HOUSING ASSY, FINAL DRIVE LH -CONSISTS OF \$ 1 HOUSING LH 852 518 C1 1 CUP 625 743 C1 1 CUP 529 453 R1 2 PLUG 444 692	
	223 817 225 861	BOLT, 5/8-18X3-1/2 HEX-HD TYPE 8 -4- NUT, 5/8-18 HEX-TYPE 8 -4-	
8	676 108 R1 225 861	STUD, FINAL DRIVE MOUNTING -16- NUT, 5/8-18 HEX-TYPE 8 -16-	
9	852 521 C1	GASKET, HOUSING OIL PAN -2-	
10	852 520 C1 444 692 180 175	PAN, HOUSING OIL -2- PLUG, 1/4-14 HEX SKT PIPE C-Z -8- BOLT, 1/2-13 X 1-1/4 HEX-HD -20-	
11	852 536 C1 25 762 R1 272 139 25 862 R1	BOLT, FINAL DRIVE STOP EYE -2- NUT, 1-1/8-7 HEX-TYPE 8 PHC -2- NUT, 1-1/8-7 HEX-JAM -2- WASHER, 1.250 X 2.250 X .250 GA	
12	852 533 C1 25 489 R1 25 519 R1	PIN, EYE BOLT MOUNTING -2- BOLT, 1/4-20 X 1-3/4 HEX-HD TYPE 8 PHC -4- NUT, 1/4-20 HEX-TYPE 8 PHC -8-	
13	354 836 R1	O RING, RETAINER -2-	
14	111 980 R91	BEARING, PINION SHAFT- INNER/OUTER -4-	
15	584 268 R91	BEARING, PINION SHAFT THRUST -4-	
16	675 704 R1	RACE, PINION SHAFT THRUST -4-	
17	852 522 C1	SHAFT ASSY, FINAL DRIVE PINION -2- - INCLUDES BUSHING 676 862 R1- -50 INCH TRACK WIDTH	
18	852 700 C1	SHAFT ASSY, FINAL DRIVE PINION -2- - INCLUDES BUSHING 676 862 R1- -68 INCH TRACK WIDTH-	
19	676 032 R91	SEAL, PINION SHAFT OIL -2- -50 INCH TRACK WIDTH	
20	676 862 R1	BUSHING, BEVEL GEAR SHAFT -2-	
21	676 871 R91	BEARING, PINION SHAFT INNER -2- -68 INCH TRACK WIDTH-	
22	676 032 R91	SEAL, PINION SHAFT OIL -68 INCH TRACK WIDTH-	
23	852 530 C1 180 120 120 382	PLUG ASSY, BULL GEAR SHAFT ACCESS-2- BOLT, 3/8-16 X 3/4 HEX-HD -2- WASHER, 3/8 LOCK -2-	
24	381 109 R1	RING, ACCESS HOLE PLUG SEAL -2-	
25	852 525 C1 180 175	RETAINER, BULL GEAR SHAFT -2- BOLT, 1/2-13 X 1-1/4 HEX-HD -6-	
26	852 624 C91	SET, INNER BEARING SHIM -CONSISTS OF \$5 SHIM .002 \$5 SHIM .005	

REF. NO.	PART NUMBER	DESCRIPTION	TC-210
FINAL DRIVE AND SPROCKET -CONTINUED			
27	852 528 C1	WASHER, RETAINER BOLT LOCK -2-	
28	625 742 C91	CONE, BULL GEAR SHAFT INNER BRG -2-	
29	625 743 C1	CUP, BULL GEAR SHAFT INNER BRG -2-	
30	852 534 C1	RING, BULL GEAR INNER RETAINING -4-	
31	852 535 C1	RING, BULL GEAR INNER SHIM -4- USE AS REQD	
32	676 872 R1	GEAR, FINAL DRIVE BULL -49T -2-	
33	852 529 C1	SPACER, BULL GEAR OUTER -2-	
34	529 453 R1	CUP, BULL GEAR SHAFT OUTER BRG -2-	
35	529 452 R91	CONE, BULL GEAR SHAFT OUTER BRG -2-	
36	677 917 R91	SEAL, BULL GEAR SHAFT OIL -2-	
37	852 524 C1	SHAFT, BULL GEAR -2-	
	852 620 C91	DRIVE ASSY, FINAL LH -CONSISTS OF 1 HOUSING ASSY 852 622 C91 1 GASKET 852 521 C1 1 PAN 852 520 C1 2 PLUG 444 692 C1 10 BOLTS 180 175 1 SEAL 676 032 R91 1 BEARING 111 980 R91 1 GEAR 676 872 R1 2 RING 852 535 C1 2 RING 852 534 C1 1 SPACER 852 529 C1 1 SHAFT 852 524 C1 1 SEAL 677 917 R91 1 CONE 529 452 R91 1 CONE 625 742 C91 1 SET 852 624 C91 1 RETAINER 852 525 C1 3 BOLTS 180 175 1 WASHER 852 528 C1 1 PLUG ASSY 852 530 C1 1 BOLT 180 120 1 WASHER 120 382 1 RING 381 109 R1	
	852 621 C91	DRIVE ASSY, FINAL RH -CONSISTS OF 1 HOUSING ASSY 852 623 C91 1 GASKET 852 521 C1 1 PAN 852 520 C1 2 PLUG 444 692 C1 10 BOLTS 180 175 1 SEAL 676 032 R91 1 BEARING 111 980 R91 1 GEAR 676 872 R1 2 RING 852 535 C1 2 RING 852 534 C1 1 SPACER 852 529 C1 1 SHAFT 852 524 C1 1 SEAL 677 917 R91 1 CONE 529 452 R91 1 CONE 625 742 C91 1 SET 852 624 C91 1 RETAINER 852 525 C1 3 BOLTS 180 175 1 WASHER 852 528 C1 1 PLUG ASSY 852 530 C1 1 BOLT 180 120 1 WASHER 120 382 1 RING 381 109 R1	
	852 008 C91	PACKAGE, FINAL DRIVE GASKET AND SEAL -CONSISTS OF 1 O-RING 354 836 R1 6 SHIM 676 865 R1 1 GASKET 852 521 C1 1 SEAL 676 032 R91 1 SEAL 677 917 R91 1 RING 381 109 R1	