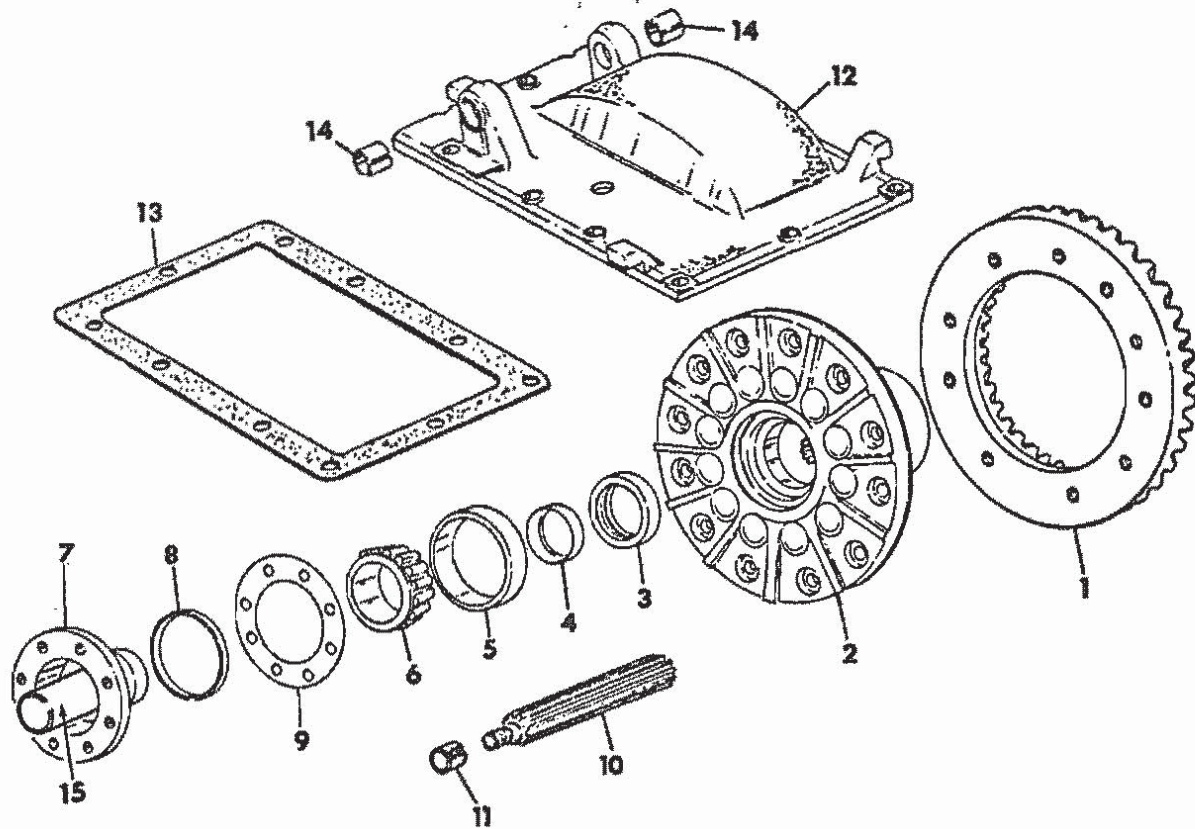


SF. NO.	PART NUMBER	DESCRIPTION	TC-211
---------	-------------	-------------	--------

SF. NO.	PART NUMBER	DESCRIPTION	TC-211
---------	-------------	-------------	--------

BEVEL GEAR DRIVE

BEVEL GEAR DRIVE -CONTINUED



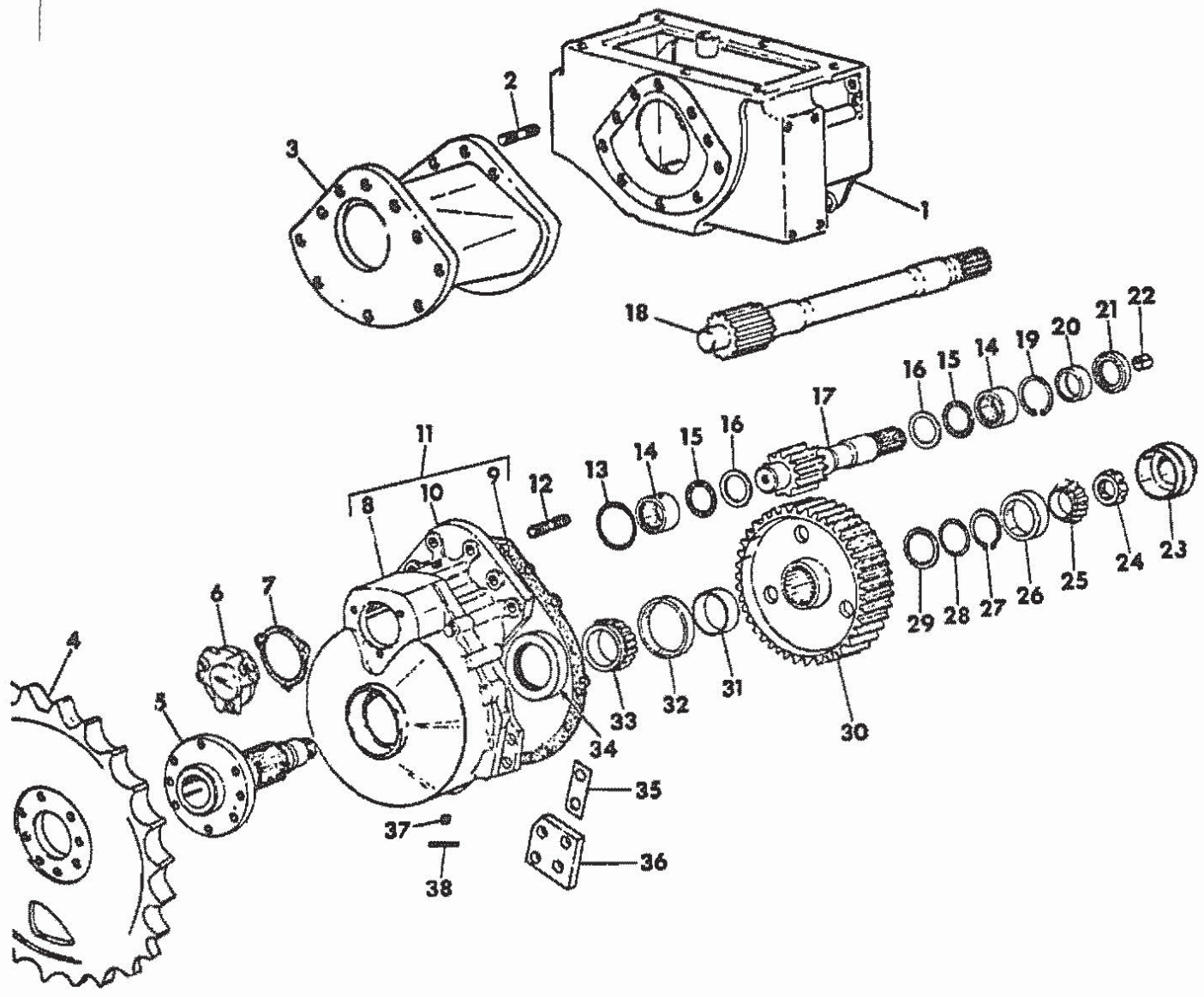
IIB-1047

1	GEAR, DRIVE BEVEL NOT SERVICED SEPARATELY ORDER 1-676 844 R1 SET 181 696 BOLT, 1/2-20 X 1 HEX-HD -12- 135 629 WASHER, 1/2 EXT-TOOTH LOCK -12-
2	676 855 R91 HUB ASSY, BEVEL GEAR DRIVE INCLUDES 2-13 390 D BRG CUP
3	676 852 R91 SEAL, DRIVE HUB OIL -2-
4	676 853 R1 SLEEVE, DRIVE HUB OIL SEAL WEAR -2-
5	13 390 D CUP, DRIVE HUB BEARING -2-
6	57 2 039 CONE, DRIVE HUB BEARING -2-
7	676 850 R11 RETAINER ASSY, DRIVE HUB BRG -2- INCLUDES 1-676 851 R1 BUSHING 180 121 BOLT, 3/8-16 X 7/8 HEX-HD -12- 120 382 WASHER, 3/8 LOCK -12-
8	343 700 R1 O RING, BRG RETAINER -2-
9	SHIM, DRIVE HUB BEARING RETAINER-.003
9	SHIM, DRIVE HUB BEARING RETAINER-.005
9	SHIM, DRIVE HUB BEARING RETAINER-.010 NOT SERVICED SEPARATELY ORDER 1-850 215 C91-SHIM SET
10	676 854 R1 SHAFT, BEVEL GEAR SIDE DRIVE -FOR SERVICE ON TRACTORS BUILT PRIOR TO TRACTOR SERIAL NO. 3371 ORDER 2-850 685C1, SHAFT-

10	850 685 C1 SHAFT, BEVEL GEAR SIDE DRIVE -2- -FOR TRACTORS WITH TRACTOR SERIAL NO. 3371 AND SINCE-
11	676 862 R1 BUSHING, SIDE DRIVE SHAFT PILOT -2- IN FINAL DRIVE PINTON SHAFT
12	676 944 R11 COVER ASSY, BEVEL GEAR -INCLUDES 2-676 815R1, BUSHING- 109 461 FITTING, 1/8-27 57R LUB -2- 180 175 BOLT, 1/2-13 X 1-1/4 HEX HD -7- 120 384 WASHER, 1/2 LOCK -7-
13	676 945 R1 GASKET, BEVEL COVER
14	676 815 R1 BUSHING, BRAKE CROSS SHAFT -2-
15	676 851 R1 BUSHING, STEERING CLUTCH RELEASE -2- 676 844 R1 SET, TRANSMISSION SPLINE SHAFT AND DRIVE BEVEL GEAR MATED CONSISTS OF- 81-TRANSMISSION SPLINE SHAFT 81-DRIVE BEVEL GEAR
	850 215 C91 SET, DRIVE HUB BEARING RETAINER SHIM CONSISTS OF- 812-RETAINER SHIM-.003-

FINAL DRIVE AND SPROCKET

FINAL DRIVE AND SPROCKET -CONTINUED



HC-1989

DRIVE TRAIN		-21-	SECTION 07
DEF. NO.	PART NUMBER	DESCRIPTION	TC-211
FINAL DRIVE AND SPROCKET -CONTINUED			
1		HOUSING ASSY, STEERING CLUTCH LH HOUSING ASSY, STEERING CLUTCH RH-SHOWN- -FOR COMPONENT AND ATTACHING PARTS REFER TO STEERING DRIVE IN THIS SECTION-	
2	676 108 R1	STUD, GAUGE SPACER MOUNTING -14- -68 INCH TRACK WIDTH-	
	225 861	NUT, 5/8-18 HEX TYPE B -14-	
3	850 696 C1	SPACER, FINAL DRIVE GAUGE -2- -68 INCH TRACK WIDTH-	
	444 692	PLUG, 1/4 C-2 HEX SKT PIPE -2-	
	223 817	BOLT, 5/8-18 X 3-1/2 HEX TYPE B -6-	
	225 861	NUT, 5/8-18 HEX TYPE B -6-	
4	636 742 R2	SPROCKET, REGULAR TRACK DRIVE	
	635 075 R1	STUD, DRIVE SPROCKET -4-	
	223 810	BOLT, 5/8-18 X 1-3/4 TYPE B HEX-HD -12-	
	225 861	NUT, 5/8-18 TYPE B HEX -4-	
4	636 744 R2	SPROCKET, CUT-AWAY TRACK DRIVE	
	635 075 R1	STUD, DRIVE SPROCKET -4-	
	223 810	BOLT, 5/8-18 X 1-3/4 TYPE B HEX-HD -12-	
	225 861	NUT, 5/8-18 TYPE B HEX -4-	
8	676 876 R11	SHAFT ASSY, BULLGEAR -2- -INCLUDES 1-676 877R1, NUT- 19 506 R1	
6	676 863 R1	RETAINER, PINION SHAFT -2- BOLT, 3/8-16 X 1-1/4 HEX-HD -6- 180 124 120 382	
7	676 865 R1	SKIN, RETAINER - .010 -2-	
8		HOUSING, OUTER HALF FINAL DRIVE -2- -NOT SERVICED SEPARATELY- -FOR SERVICE ON TRACTORS BUILT PRIOR TO TRACTOR SERIAL NO. 2247 DRIVER 1-850 644C91, HOUSING ASSY LH OR 1-850 086C91, LH FINAL DRIVE ASSY. DRIVER 1-850 645C91, HOUSING ASSY RH OR 1-850 087C91, RH FINAL DRIVE ASSY- 180 077 180 181	
9	676 870 R1	GASKET, FINAL DRIVE HOUSING -2-	
10		HOUSING, INNER HALF FINAL DRIVE -2- -NOT SERVICED SEPARATELY- -FOR SERVICE ON TRACTORS BUILT PRIOR TO TRACTOR SERIAL NO. 2247 DRIVER 1-850 644C91, HOUSING ASSY LH OR 1-850 086C91, LH FINAL DRIVE ASSY. DRIVER 1-850 645C91, HOUSING ASSY RH OR 1-850 087C91, RH FINAL DRIVE ASSY- 180 077 180 181	
11	850 644 C91	HOUSING ASSY, FINAL DRIVE LH -FOR USE ON TRACTORS BUILT WITH TRACTOR SERIAL NO. 2247 & SINCE- -INCLUDES- 1-CUP 317 706C1 1-CUP ST 918 1-GASKET 676 870R1 2-PIN 141 244 3-BOLT 180 177 223 817 225 861	

DRIVE TRAIN		-21-	SECTION 07
DEF. NO.	PART NUMBER	DESCRIPTION	TC-211
FINAL DRIVE AND SPROCKET -CONTINUED			
11	850 645 C91	HOUSING ASSY, FINAL DRIVE RH -FOR USE ON TRACTORS BUILT WITH TRACTOR SERIAL NO. 2247 & SINCE- -INCLUDES- 1-CUP 317 706C1 1-CUP ST 918 1-GASKET 676 870R1 2-PIN 141 244 3-BOLT 180 177 223 817 225 861	
12	676 108 R1	STUD, FINAL DRIVE MOUNTING -16- 225 861	
		NUT, 5/8-18 HEX-TYPE B -16-	
13	354 836 R1	D RING, RETAINER -2-	
14	111 980 R91	BEARING, PINION SHAFT- INNER/OUTER -4-	
15	584 268 R91	BEARING, PINION SHAFT THRUST -4-	
16	675 704 R1	RACE, PINION SHAFT THRUST -4-	
17	676 861 R11	SHAFT ASSY, FINAL DRIVE PINION -2- -INCLUDES 1-676 862R1, BUSHING- -50 INCH TRACK GAUGE WIDTH-	
18	850 694 C91	SHAFT ASSY, FINAL DRIVE PINION -2- -INCLUDES 1-676 862R1, BUSHING- -68 INCH TRACK GAUGE WIDTH-	
19	617 933 R1	RING, BEARING RETAINING -2-	
20	676 871 R91	BEARING, PINION SHAFT NEEDLE INNER -2-	
21	676 032 R91	SEAL, PINION SHAFT OIL -2-	
22	676 862 R1	BUSHING, BEVEL GEAR SHAFT -2-	
23	676 878 R1	CAP, BULL GEAR SHAFT -2-	
24	676 877 R1	NUT, BULL GEAR SHAFT RETAINING -2-	
25	317 705 C91	CONE, BULL GEAR SHAFT INNER BRG -2-	
26	317 706 C1	CUP, BULL GEAR SHAFT INNER BRG -2-	
27	238 640 R1	RING, INNER WASHER RETAINING -2-	
28	676 874 R1	SKIN, INNER WASHER -USE AS REQUIRED-	
29	676 873 R1	WASHER, GEAR SPACER INNER -2-	
30	676 872 R1	GEAR, FINAL DRIVE BULL -49T -2-	
31	676 875 R1	SPACER, BULL GEAR OUTER -2-	
32	ST 981	CUP, BULLGEAR SHAFT OUTER BRG -2-	
33	ST 2 096	CONE, BULLGEAR SHAFT OUTER BRG -2-	
34	677 917 R91	SEAL, BULL GEAR SHAFT OIL -2-	
35	676 881 R1	SKIN, FINAL DRIVE STOP BAR -USE AS REQUIRED-	
36	850 071 C1	BAR, FINAL DRIVE STOP -2- -NOT FOR TRACTORS EQUIPPED WITH BACKHOE- 271 774 220 086 467 750 R1	
		BOLT, 3/4-10 X 2-3/4 HEX-HD -8- NUT, 3/4-10 HEX -8- WASHER, .781 X 1.500 X .105 -4-	
36	676 879 R1	BAR, FINAL DRIVE STOP -2- -FOR TRACTOR EQUIPPED W/BACKHOE- 271 774 220 086 467 750 R1	
		BOLT, 3/4-10 X 2-3/4 HEX-HD -8- NUT, 3/4-10 HEX -8- WASHER, .781 X 1.500 X .105 -4-	
37	444 692	PLUG, 1/4-14 NPT HEX SKT HD PIPE C-2-4-	
38	141 244	PIN, FINAL DRIVE HOUSING DOWEL -2-	

DRIVE TRAIN

-22-

SECTION 07

REF. NO.	PART NUMBER	DESCRIPTION	TC-211
----------	-------------	-------------	--------

FINAL DRIVE AND SPROCKET -CONTINUED

850 212 C91 PACKAGE, FINAL DRIVE GASRET & SEAL
 -COMPOSED OF-
 1-O-RING 354 836R1
 6-SHM 676 865R1
 1-GASKET 676 870R1
 1-SEAL 676 032R91
 1-SEAL 677 917R91

850 086 C91 DRIVE ASSY, FINAL LH
 -FOR USE ON TRACTOR BUILT WITH
 SERIAL NO. 2247 AND SINCE-
 -COMPOSED OF-
 1-HOUSING ASSY 850 644C91
 3-BOLT 180 177
 10-BOLT 180 181
 1-SEAL 676 032R91
 1-BEARING 676 871R91
 2-BEARING 111 980R91
 1-RING 617 933R1
 1-GEAR 676 872R1
 1-WASHER 676 873R1
 2-SHM 676 874R1
 1-RING 238 640R1
 1-SPACER 676 875R1
 1-SHAFT 676 876R11
 1-PIN 19 506R1
 1-CAP 676 878R1
 1-CONE 317 705C91
 1-CUP 317 706C1
 1-CONE ST2 096
 1-CUP ST 981
 1-SEAL 677 917R1
 4-PLUG 444 692

850 087 C91 DRIVE ASSY, FINAL RH
 1-HOUSING ASSY 850 645C91
 -FOR USE ON TRACTOR BUILT WITH
 SERIAL NO. 2247 AND SINCE-
 -COMPOSED OF-
 1-HOUSING ASSY 850 645C91
 3-BOLT 180 177
 10-BOLT 180 181
 1-SEAL 676 032R91
 1-BEARING 676 871R91
 2-BEARING 111 980R91
 1-RING 617 933R1
 1-GEAR 676 872R1
 1-WASHER 676 873R1
 2-SHM 676 874R1
 1-RING 238 640R1
 1-SPACER 676 875R1
 1-SHAFT 676 876R11
 1-PIN 19 506R1
 1-CAP 676 878R1
 1-CONE 317 705C91
 1-CUP 317 706C1
 1-CONE ST2 096
 1-CUP ST 981
 1-SEAL 677 917R1
 4-PLUG 444 692

DRIVE TRAIN

-22-

SECTION 07

REF. NO.	PART NUMBER	DESCRIPTION	TC-211
----------	-------------	-------------	--------