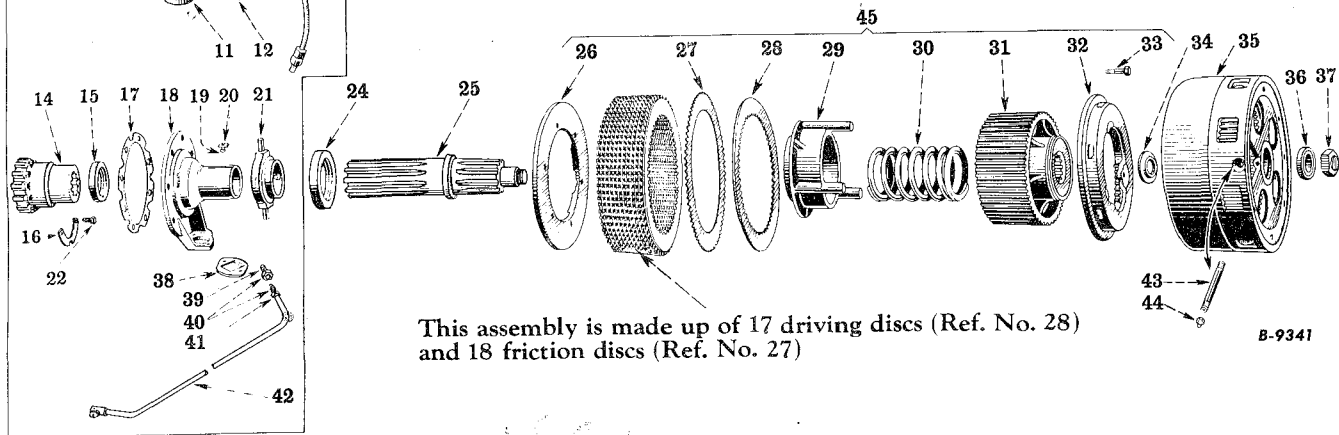
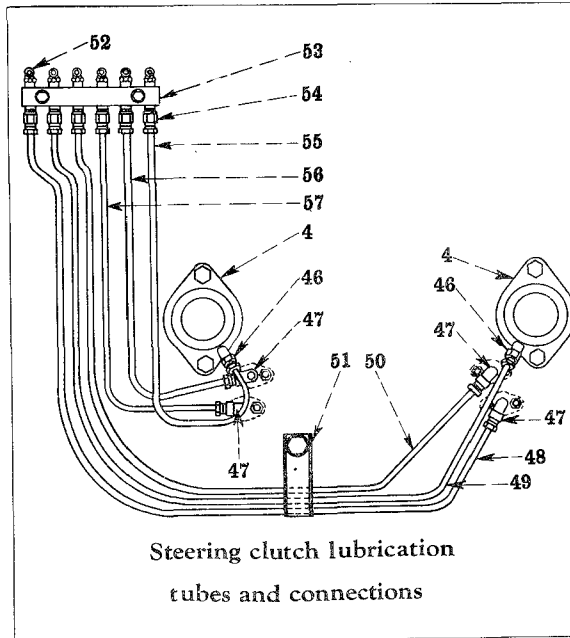
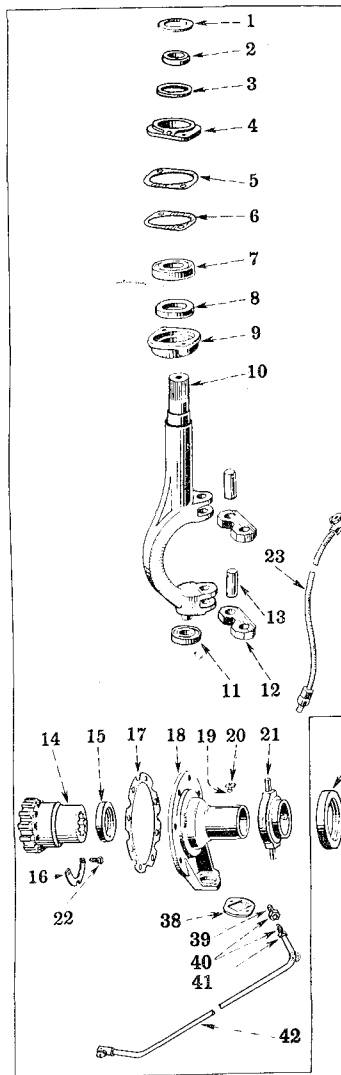




CHASSIS

FINAL DRIVE — STEERING CLUTCH RELEASE SHAFT AND MECHANISM



B-9341

REF. NO.	PART NUMBER	DESCRIPTION	SERIAL NUMBER	NO. REQ'D
1	272 322 R1	RETAINER, FELT, STEERING CLUTCH RELEASE FORK UPPER BEARING		2
2	56 010 D	SPACER, STEERING CLUTCH RELEASE LEVER		2
3	56 008 D	FELT, STEERING CLUTCH RELEASE FORK UPPER BEARING		2
4	8 680 DX	RETAINER, STEERING CLUTCH RELEASE FORK UPPER BEARING, w/PLUG, 103 883		2
	103 322	WASHER, LOCK, 7/16"		4
	179 862	SCREW, CAP, HEX-HD., 7/16-14NC x 1-1/2"		4
5	56 009 D	GASKET, STEERING CLUTCH RELEASE FORK UPPER BEARING RETAINER		2
6	56 009 D	GASKET, STEERING CLUTCH RELEASE FORK UPPER BEARING CAGE		2
7	ST 205 A	BEARING, BALL, UPPER, STEERING CLUTCH FORK		2

TC-65

CHASSIS



REF. NO.	PART NUMBER	DESCRIPTION	SERIAL NUMBER	NO REQ'D
FINAL DRIVE — STEERING CLUTCH RELEASE SHAFT AND MECHANISM — Continued				
8	264 694 R91	OIL SEAL, STEERING CLUTCH RELEASE FORK UPPER BEARING (OPTIONAL WITH 273 581 R91 AND 276 204 R91)		2
8	273 581 R91	OIL SEAL, STEERING CLUTCH RELEASE FORK UPPER BEARING (OPTIONAL WITH 264 694 R91 AND 276 204 R91)		2
8	276 204 R91	OIL SEAL, STEERING CLUTCH RELEASE FORK UPPER BEARING (OPTIONAL WITH 273 581 R91 AND 264 694 R91)		2
9	8 682 DX	CAGE, STEERING CLUTCH RELEASE FORK UPPER BEARING, w/OIL SEAL, 264 694 R91		2
10	57 099 D	FORK, STEERING CLUTCH RELEASE		2
11	ST 516	BEARING, BALL, LOWER, STEERING CLUTCH RELEASE FORK		2
12	56 005 D	LINK, STEERING CLUTCH RELEASE COLLAR SHIFTER		4
13	56 007 D	PIN, STEERING CLUTCH RELEASE COLLAR SHIFTER LINK		4
	103 386	PIN, COTTER, 1/8 x 1-1/4"		8
14	251 625 R21	COUPLING, STEERING CLUTCH SHAFT, 12 TEETH, w/PLUG, 172 604		2
15	40 880 D	OIL SEAL, STEERING CLUTCH SHAFT COUPLING (OPTIONAL WITH 264 695 R91)		2
15	264 695 R91	OIL SEAL, STEERING CLUTCH SHAFT COUPLING (OPTIONAL WITH 40 880 D)		2
16	271 811 R1	RETAINER, STEERING CLUTCH SHAFT COUPLING		4
17	271 808 R1	GASKET, DRIVE BEVEL GEAR BEARING CAGE CAP		2
18	271 809 R11	CAP, DRIVE BEVEL GEAR BEARING CAGE, L.H., w/OIL SEAL, 40 880 D AND PIN, 273 562 R1		1
	179 881	SCREW, CAP, HEX-HD., 1/2-13NC x 1"		8
	114 608	WASHER, LOCK, 1/2"		8
18	271 810 R11	CAP, DRIVE BEVEL GEAR BEARING CAGE, L.H., w/OIL SEAL, 40 880 D AND PIN, 273 562 R1		1
	179 881	SCREW, CAP, HEX-HD., 1/2-13NC x 1"		8
	114 608	WASHER, LOCK 1/2"		8
19	56 006 D	PIN, STEERING CLUTCH RELEASE COLLAR KEY		2
20	56 013 DX	KEY, STEERING CLUTCH RELEASE COLLAR, w/PIN, 56 006 D		2
21	56 018 D	COLLAR, STEERING CLUTCH RELEASE		2
22	260 618 R1	BOLT, STEERING CLUTCH SHAFT COUPLING RETAINER		12
23	57 103 DX	TUBE, GREASE, LOWER, STEERING CLUTCH RELEASE BEARING		2
	13 239 R1	BOLT, MACHINE, 1/4-20NC x 5/8"		4
	115 547	WASHER, LOCK, INTERNAL-TOOTH, 1/4"		4
	114 501	NUT, JAM, HEX., 1/4-20NC		4
24	53 233 DA	BEARING, THRUST, STEERING CLUTCH RELEASE (AETNA)		2
25	251 624 R1	SHAFT, STEERING CLUTCH		2
26	5 715 D	PLATE, STEERING CLUTCH HUB		2
	103 323	WASHER, LOCK, 1/2"		12
	179 883	SCREW, CAP, HEX-HD., 1/2-13NC x 1-1/4"		12
27	40 883 DC	DISC, FRICTION, 58 TEETH, STEERING CLUTCH (RAYBESTOS)		36
27	58 957 D	DISC, FRICTION, 58 TEETH, STEERING CLUTCH (BI-METALLIC) (SPECIAL) (USED WITH 61 903 D)		40
28	40 882 D	DISC, DRIVING, 77 TEETH, STEERING CLUTCH (STEEL) (38 USED WITH 61 903 D)		34
29	5 712 DB	RETAINER, STEERING CLUTCH PRESSURE SPRING		2
30	68 462 D	SPRING, PRESSURE, STEERING CLUTCH		2
31	9 717 D	HUB, STEERING CLUTCH		2

TC-65

CHASSIS



REF. NO.	PART NUMBER	DESCRIPTION	SERIAL NUMBER	NO. REQ'D
FINAL DRIVE — STEERING CLUTCH RELEASE SHAFT AND MECHANISM — Continued				
32	5 711 DC	PLATE, PRESSURE, STEERING CLUTCH		2
33	54 968 D	BOLT, DOWEL, STEERING CLUTCH PRESSURE PLATE		6
	103 323	WASHER, LOCK, 1/2"		6
34	53 742 DA	SPACER, STEERING CLUTCH PILOT BEARING		2
35	5 714 DE	DRUM, STEERING CLUTCH		2
	271 581	SCREW, CAP, HEX-HD., 5/8-18NF x 1-1/4"		16
36	ST 333	BEARING, STEERING CLUTCH PILOT		2
37	256 790 R1	NUT, STEERING CLUTCH PILOT BEARING RETAINER		2
38	57 102 D	CAP, STEERING CLUTCH RELEASE FORK LOWER BEARING		2
	103 320	WASHER, LOCK, 5/16"		4
	113 916	BOLT, SLOTTED, FL-HD., 5/16-18NC x 1-1/4"		4
	102 634	NUT, HEX., 5/16-18NC		4
39	35 252 D	CONNECTOR, STEERING CLUTCH RELEASE FORK LOWER BEARING GREASE TUBE		2
40	35 252 DX	CONNECTOR, STEERING CLUTCH RELEASE FORK LOWER BEARING GREASE TUBE. 35 252 D, w/NUT, 29 899 D		2
41	29 899 D	NUT, STEERING CLUTCH RELEASE FORK LOWER BEARING GREASE TUBE CONNECTOR		2
42	272 323 R91	TUBE, GREASE, LOWER, STEERING CLUTCH RELEASE FORK LOWER BEARING, L.H., w/NUT, 29 899 D		1
	13 239 R1	SCREW, MACHINE, SQ-HD., 1/4-20NC x 5/8"		2
	114 501	NUT, JAM, HEX., 1/4-20NC		2
	115 547	WASHER, LOCK, INTERNAL-TOOTH, 1/4"		2
42	272 324 R91	TUBE, GREASE, LOWER, STEERING CLUTCH RELEASE FORK LOWER BEARING, R.H., w/NUT, 29 899 D		1
	13 239 R1	SCREW, MACHINE, SQ-HD., 1/4-20NC x 5/8"		2
	114 501	NUT, JAM., HEX., 1/4-20NC		2
	115 547	WASHER, LOCK, INTERNAL-TOOTH, 1/4"		2
43	54 652 D	PIPE, STEERING CLUTCH PILOT BEARING LUBRICATOR		2
44	109 368	FITTING, LUBRICATION, STEERING CLUTCH PILOT BEARING (OPTIONAL WITH Q 3 618)		2
44	Q 3 618	FITTING, LUBRICATION, STEERING CLUTCH PILOT BEARING (OPTIONAL WITH 109 368)		2
45	40 891 DD,	CLUTCH, STEERING, ASSEMBLY (COMPOSED OF -		2
		3 BOLT 54 968 D 1 PLATE 5 715 D		
		17 DISC 40 882 D 1 RETAINER 5 712 DB		
		18 FACING 40 883 DC 6 SCREW 179 883		
		1 HUB 9 717 D 1 SPRING 68 462 D		
		1 PLATE 5 711 DC 9 WASHER 103 323)		
45	59 009 DB	CLUTCH, STEERING ASSEMBLY (BI-METALLIC) (SPECIAL) (USED WITH 61 093 D) (COMPOSED OF -		2
		3 BOLT 54 968 D 1 PLATE 5 715 D		
		19 DISC 40 882 D 1 RETAINER 5 712 DB		
		20 DISC 58 957 D 6 SCREW 179 883		
		1 HUB 9 717 D 1 SPRING 68 462 D		
		1 PLATE 5 711 DC 9 WASHER 103 323)		
46	29 901 DX	CONNECTOR, STEERING CLUTCH LUBRICATION TUBE, w/NUT, 29 898 D (USED IN BEARING RETAINER)		2
47	30 402 DX	ELBOW, STEERING CLUTCH LUBRICATION TUBE, w/NUT, 29 898 D		4



CHASSIS

REF. NO.	PART NUMBER	DESCRIPTION	SERIAL NUMBER	NO. REQ'D
FINAL DRIVE — STEERING CLUTCH RELEASE SHAFT AND MECHANISM — Continued				
48	275 138 R11	TUBE, GREASE, UPPER, STEERING CLUTCH RELEASE FORK LOWER BEARING, R.H., w/TWO NUTS, 29 898 D		1
49	275 137 R11	TUBE, GREASE, STEERING CLUTCH RELEASE FORK UPPER BEARING, R.H., w/TWO NUTS, 29 898 D		1
50	275 136 R11	TUBE, GREASE, UPPER, STEERING CLUTCH RELEASE BEARING, R.H., w/TWO NUTS, 29 898 D		1
51	275 132 R1	CLIP, STEERING CLUTCH LUBRICATION TUBE (FOR R.H. TUBES)		1
52	109 462	FITTING, LUBRICATION (LINCOLN 5400) (USED WITH STEERING CLUTCH GREASE TUBE JUNCTION BLOCK) (OPTIONAL WITH 109 354)		6
52	109 354	FITTING, LUBRICATION (ALEMITE 1613) (USED WITH STEERING CLUTCH GREASE TUBE JUNCTION BLOCK) (OPTIONAL WITH 109 462)		6
53	275 131 R1	BLOCK, JUNCTION, STEERING CLUTCH GREASE TUBE		1
	179 738	SCREW, CAP, HEX-HD., 1/4-20NC X 1-1/8"		2
	103 319	WASHER, LOCK, MEDIUM, 1/4"		2
54	29 901 DX	CONNECTOR, STEERING CLUTCH LUBRICATION TUBE, w/NUT, 29 898 D (USED IN JUNCTION BLOCK)		6
55	275 133 R11	TUBE, GREASE, STEERING CLUTCH RELEASE FORK UPPER BEARING, L.H., w/TWO NUTS, 29 898 D		1
56	275 134 R11	TUBE, GREASE, UPPER, STEERING CLUTCH RELEASE BEARING, L.H., w/TWO NUTS, 29 898 D		1
57	275 135 R11	TUBE, GREASE, UPPER, STEERING CLUTCH RELEASE FORK LOWER BEARING, L.H., w/TWO NUTS, 29 898 D		1
	145 017 H	ADAPTER, STEERING CLUTCH RELEASE BEARING GREASE TUBE ELBOW (LINCOLN 20029) (OPTIONAL WITH 191 759)		2
	191 759	ADAPTER, STEERING CLUTCH RELEASE BEARING GREASE TUBE ELBOW (ALEMITE 44701) (OPTIONAL WITH 145 017 H)		2
	61 903 D	ATTACHMENT, STEERING CLUTCH FRICTION DISC (BI-METALLIC) (SPECIAL) (CONSISTS OF FOUR DISCS, 40 882 D AND FORTY DISCS, 58 957 D) (SEE NOTE)		1
	105 404	NIPPLE, CLOSE, STEERING CLUTCH RELEASE COLLAR		2
	29 899 D	NUT, STEERING CLUTCH RELEASE FORK LOWER BEARING LOWER TUBE		4
	29 898 D	NUT, STEERING CLUTCH LUBRICATING TUBE CONNECTOR		8
	29 898 D	NUT, STEERING CLUTCH LUBRICATION TUBE ELBOW		4
	29 898 D	NUT, STEERING CLUTCH RELEASE FORK UPPER BEARING GREASE TUBE, L.H.		2
	29 898 D	NUT, STEERING CLUTCH RELEASE BEARING GREASE TUBE, UPPER, L.H.		2
	29 898 D	NUT, STEERING CLUTCH RELEASE FORK LOWER BEARING GREASE TUBE, UPPER, L.H.		2
	29 898 D	NUT, STEERING CLUTCH RELEASE BEARING GREASE TUBE, UPPER, R.H.		2
	29 898 D	NUT, STEERING CLUTCH RELEASE FORK UPPER BEARING GREASE TUBE, R.H.		2
	29 898 D	NUT, STEERING CLUTCH RELEASE FORK LOWER BEARING GREASE TUBE, UPPER, R.H.		2
	273 562 R1	PIN, LOCK, BEVEL GEAR BEARING ADJUSTER		2
	172 604	PLUG, EXPANSION, 3"		1
	103 883	PLUG, PIPE, 1/8", STEERING CLUTCH RELEASE FORK UPPER BEARING RETAINER		2
	260 619 R1	WIRE, LOCKING, STEERING CLUTCH SHAFT COUPLING RETAINER BOLT		6
NOTE - FACTORY APPLICATION - ORDER ON MACHINE ORDER FORM FIELD APPLICATION - ORDER THROUGH REGULAR SERVICE PARTS CHANNELS				