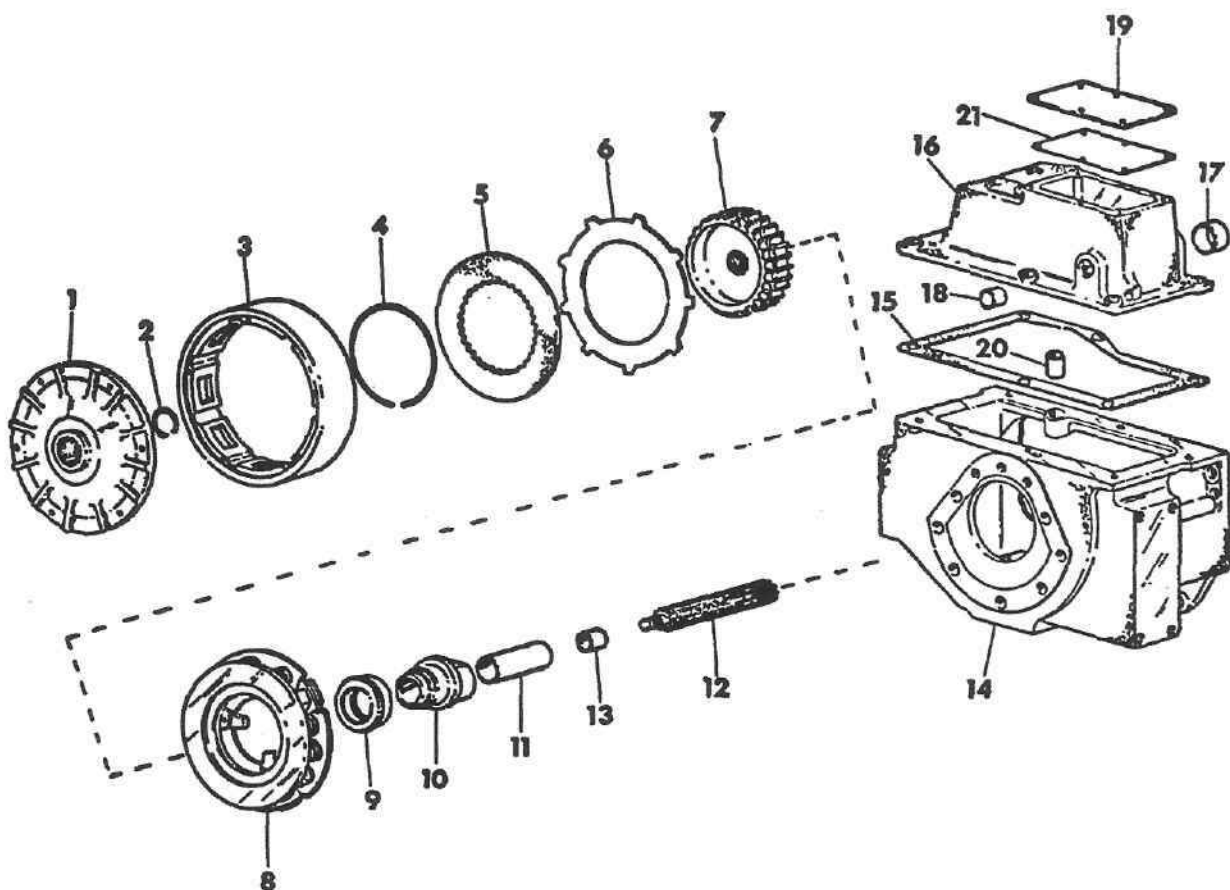


REF. NO.	PART NUMBER	DESCRIPTION	TC-211
----------	-------------	-------------	--------

## STEERING DRIVE



REF. NO.	PART NUMBER	DESCRIPTION	TC-211
----------	-------------	-------------	--------

## STEERING DRIVE --CONTINUED

REF. NO.	PART NUMBER	DESCRIPTION	TC-211
STEERING DRIVE -CONTINUED			
1	676 831 R1	BASE, STEERING DRUM -2- PRIOR TO SERIAL NO. 3264	
1	850 676 C1	BASE, STEERING DRUM -2- SERIAL NO. 3264 AND SINCE	
2	676 832 R1	RING, BASE RETAINING -2-	
3	676 828 R2	DRUM, STEERING DRIVE -2-	
4	676 830 R1	RING, DRIVE HUB -2-	
5	676 834 R1	DISK, STEERING DRIVE -14-	
6	676 833 R1	PLATE, STEERING DRIVE -12-	
7	676 829 R1	HUB, STEERING DRIVE -2-	
8	676 827 R91	CLUTCH ASSY, STEERING DRIVE -2- FOR COMPONENTS SEE LISTING -STEERING CLUTCH- THIS SECTION	
	891 700 C1	SHIM, STEERING DRIVE CLUTCH -6-	
	635 401 R1	WASHER, STEERING CLUTCH SHIM -12-	
	187 147	BOLT, 5/16-18 X 3-1/2 HEX-HD -12-	
	120 374	NUT, 5/16-18 HEX -12-	
	120 214	WASHER, 5/16 LOCK -12-	
9	365 865 R91	BEARING, STEERING CLUTCH RELEASE -2- OPTIONAL W/ 850 691 C91 BEARING	
9	850 691 C91	BEARING, STEERING CLUTCH RELEASE -2- OPTIONAL W/ 365 865 R91 BEARING	
10	676 826 R1	SLEEVE, CLUTCH RELEASE BEARING -2-	
11	676 851 R1	BUSHING, STEERING CLUTCH RELEASE -2- PART OF 676 850 R11	
12	676 854 R1	SHAFT, BEVEL GEAR - PRIOR TO SERIAL NO. 3371 - FOR SERVICE ORDER	
12	850 685 C1	SHAFT, BEVEL GEAR - SERIAL NO. 3371 AND SINCE -2-	
13	676 862 R1	BUSHING, SIDE DRIVE SHAFT PILOT -2- IN FINAL DRIVE PINION SHAFT	
14	676 946 R11	HOUSING ASSY, STEERING CLUTCH LH PRIOR TO SERIAL NO. 4886 - FOR SERVICE ORDER 1-852 385 C91	
		HOUSING ASSY, 1-852 356 C1 SHAFT, 1-10 026 R BEARING, 1-852 358 C91 BEARING, AND 3-127 145 R91 SEALS -INCLUDES 1-444 697 PLUG 2-141 287 DOWEL PIN AND 2-850 290 C1 BUSHING	
14	676 947 R11	HOUSING ASSY, STEERING CLUTCH RH SHOWN PRIOR TO SERIAL NO. 4886 - FOR SERVICE ORDER 1-852 386 C91	
		HOUSING ASSY, 1-852 357 C1 SHAFT, 1-10 026 R BEARING, 1-852 358 C91 BEARING AND 3-127 145 R91 SEALS -INCLUDES 1-444 697 PLUG 2-141 287 DOWEL PIN AND 2-850 290 C1 BUSHING	
14	852 385 C91	HOUSING ASSY, STEERING CLUTCH LH SERIAL NO. 4886 AND SINCE	
14	852 386 C91	HOUSING ASSY, STEERING CLUTCH RH SERIAL NO. 4886 AND SINCE -INCLUDES 1-444 697 PLUG AND 2-141 287 DOWEL PIN	
	444 697	PLUG, 3/8-14 NPT HEX-SKT PIPE C-2-2-	
	141 287	PIN, 1/2 X 1-1/2 DOWEL -4-	
	271 548	BOLT, 5/8-11 X 1-3/4 HEX-HD -4-	
	271 725	BOLT, 5/8-11 X 2-1/2 HEX-HD -4-	
	340 729 R1	BOLT, 5/8-11 X 1-3/4 12 POINT -4-	
	178 627	WASHER, 5/8 - INT-Y LOCK -2-	
	676 108 R1	STUD, FINAL DRIVE MOUNTING -6-	
	225 861	NUT, 5/8-18 HEX-TYPE 8 -6-	
15	676 952 R1	GASKET, COVER -2-	

REF. NO.	PART NUMBER	DESCRIPTION	TC-211
STEERING DRIVE -CONTINUED			
16	676 950 R31	COVER ASSY, CLUTCH HOUSING LH	
16	676 951 R31	COVER ASSY, CLUTCH HOUSING RH -SHOWN- INCLUDES 1- 850 354 C1 PLUG, AND 1-676 953 R1 & 1-676 815 R1 BUSHINGS	
	126 152	FITTING, 1/8-27 NPT 45 DEG LUB -2-	
	444 688	PLUG, 1/8-27 NPT HEX SKT HD PIPE-2-	
	172 558	PLUG, 1-1/4 EXPANSION -2-	
	180 173	BOLT, 1/2-13 X 1 HEX-HD -12-	
17	676 953 R1	BUSHING, STEERING ACTUATING LEVER -2-	
18	676 815 R1	BUSHING, BRAKE ACTUATING SHAFT -2-	
19	676 954 R1	BAR, INSPECTION HOLE -2- 4 HOLES PRIOR TO SERIAL NO. 1139	
19	850 445 C1	BAR, INSPECTION HOLE -2- 6 HOLES SERIAL NO. 1139 AND SINCE	
	180 016	BOLT, 1/4-20 X 1/2 HEX-HD -2- SERIAL NO. 4886 AND SINCE	
	120 380	WASHER, 1/4 LOCK -2- SERIAL NO. 4886 AND SINCE	
	21 801 R1	WASHER, .281 X .750 X .056 FLAT -2- SERIAL NO. 4886 AND SINCE	
	180 120	BOLT, 3/8-16 X 3/4 HEX-HD 12 USED SERIAL NO. 1139 TO 4886 10 USED SERIAL NO. 4886 AND SINCE	
	120 382	WASHER, 3/8 MED LOCK - 1-PER BOLT	
	850 354 C1	PLUG, 1/2 SQ-HD FILLER -2-	
20	850 290 C1	BUSHING, UPPER AND LOWER STEERING CLUTCH SHAFT -4- FOR USE IN STEERING CLUTCH HOUSING PRIOR TO SERIAL NO. 4886	
21	676 955 R2	GASKET, COVER BAR -2-	