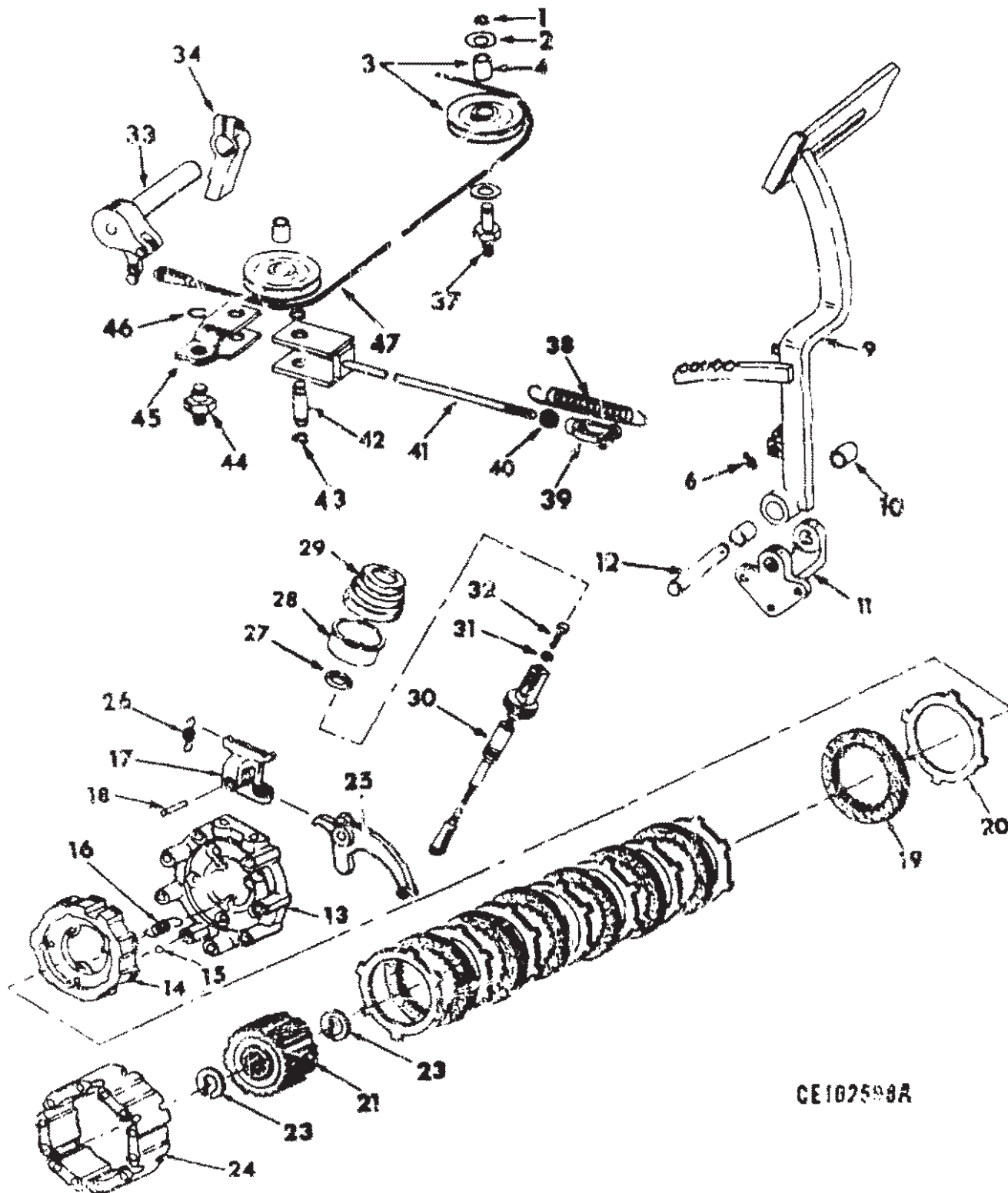


BRAKES

BRAKES AND CONTROLS



CE102500A

BRAKES

REF. NO.	PART NUMBER	DESCRIPTION	REF. NO.	PART NUMBER	DESCRIPTION
BRAKES AND CONTROLS - Continued			17	654 707 C1 24 873 R1 25 547 R1	SUPPORT, brake actuating lever (2) SCREW, hex-hd cap (4) WASHER, hardened (4)
1	631 530 R1	RING snap	18	654 079 C1	SHAFT, brake actuating lever pivot (2)
2	452 971 R1	SPACER, idler pulley (2)	19	619 200 C1	DISC, brake friction (14) 0001U002078 and below 0002U002078 and below 0003U002078 and below
3	325 558 R 1	PULLEY w/BUSHING, 307 434 R1, foot brake actuating cable (2)			
4	307 434 R1	BUSHING pulley (2)			
6	109 461	FITTING, brake pedal lubrication straight (Used with PEDAL, 628 227 C91)			
6	126 152	FITTING, brake pedal lubrication, 45° (Used with PEDAL 652 715 C91)	19	705 105 C2	DISC, brake friction (14) 0001U002079 and up 0002U002079 and up 0003U002079 and up 0007U004717 and up
9	628 227 C91	PEDAL w/two BUSHING, 325 180 R1, brake 0001U002321 and below 0002U002321 and below 0003U002321 and below (Order the following parts 1 DRAWING CZG 936 1 DRAWING CZG-1603 1 PEDAL 652 715 C91 1 SPACER 345 568 R1)	20	324 452 R1	PLATE, friction disc separator (16)
			21	354 690 C1	HUB, brake retaining (2)
			23	324 051 R1	RING, brake hub retaining (4)
			24	654 691 C1 277 232 R1	RETAINER, clutch plate (2) SCREW, hex hd cap (16)
			25	654 700 C1	LEVER, brake actuating
			26	654 080 C1	SPRING, brake actuating lever return
9	652 715 C91	PEDAL w/two BUSHING, 325 180 R1, brake 0001U002322 and up 0002U002322 and up 0003U002322 and up 0007U004717 and up	27	324 103 R91	SEAL, brake actuating cable guide (2)
			28	338 276 R2	SLEEVE, brake guide boot (2)
			29	338 277 R3	BOOT, brake cable (2)
10	325 180 R1	BUSHING, brake pedal (2)	30	654 124 C1 103 395 27 128 H 98 724 H	CABLE, brake actuating (2) PIN, cotter (4) PIN, rod end (2) PIN, rod end (2)
11	325 539 R1 25 524 R1 345 568 R1 24 863 R1 116 121	BRACKET, brake pedal mounting NUT (3) SPACER, brake locking SCREW, hex hd cap (3) WASHER, lock (3)	31	25 524 R1	NUT, 7/16" (2)
			32	191 967	SCREW, sq. hd set brake actuating cable (2)
12	325 570 R1 576 484 R1	SHAFT, brake pedal PIN, roll	33	609 850 C11	BELLCRANK, LH brake actuating
13	654 673 C1 24 846 R1	PLATE, brake actuator pressure (2) SCREW, hex hd cap (16)	33	609 851 C11 109 461	BELLCRANK, RH brake actuating FITTING, brake actuating bellcrank lubrication (2)
14	654 674 C1	ACTUATOR, brake (2)			
15	111 000 R	BALL, chrome steel brake actuating (5 balls per plate)	34	334 872 R1 24 863 H1 116 121 124 557	LEVER, pivot brake pick up (2) SCREW, hex hd cap (2) WASHER, lock (2) KEY (Woodruff No. C) (6)
16	014175 C1	SPRING, actuator return (6)			

BRAKES

REF. NO	PART NUMBER	DESCRIPTION	REF. NO.	PART NUMBER	DESCRIPTION
BRAKES AND CONTROLS – Continued					
37	325 559 R2	SHAFT, foot brake actuating cable pulley stud			
38	272 536 R1	SPRING, brake pedal return			
39	104 039	CLEVIS, short adjustable			
	103 498	PIN, rod end			
	103 385	PIN, cotter			
40	118 627	NUT, NF			
41	325 563 R92	YOKE, brake pulley pull rod			
42	525 567 R2	SHAFT, pulley			
43	631 530 R1	RING, snap (2)			
44	325 562 R2	STUD, pulley support			
45	330 705 R91	SUPPORT, pulley			
46	631 530 R1	RING, snap			
47	325 554 R93	CABLE w/two PIN, 84 727 H, foot brake actuating			
	103 385	PIN, 1/3 x 1" cotter (2)			
	108 636	PIN, 3/32 x 1-1/8" cotter (2)			
	84 727 H	PIN, rod end (2)			