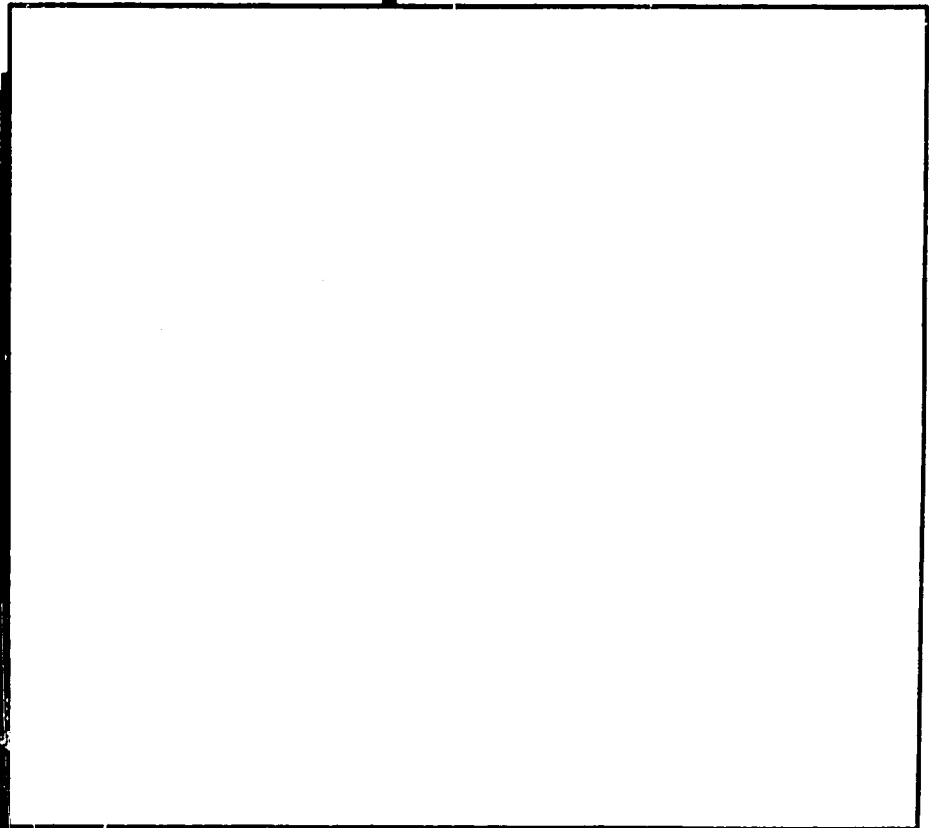
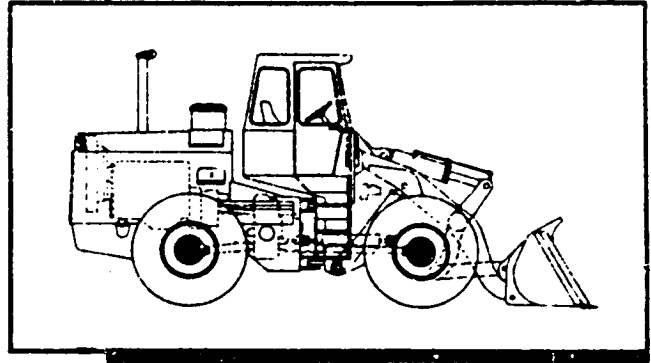


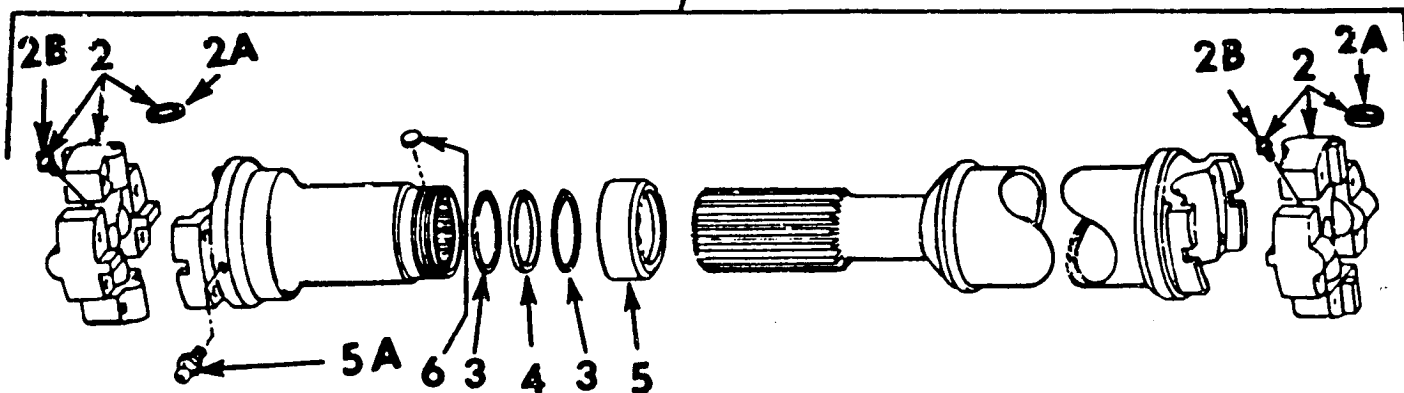
**SOLID
AXLE**



DRIVE SHAFT

REF. NO.	PART NUMBER	DESCRIPTION	REF. NO.	PART NUMBER	DESCRIPTION
----------	-------------	-------------	----------	-------------	-------------

DRIVE SHAFT (LOWER REAR AND/OR TRANSFER DRIVE TO AXLE)
 (only on units equipped with Heavy Duty Differential)



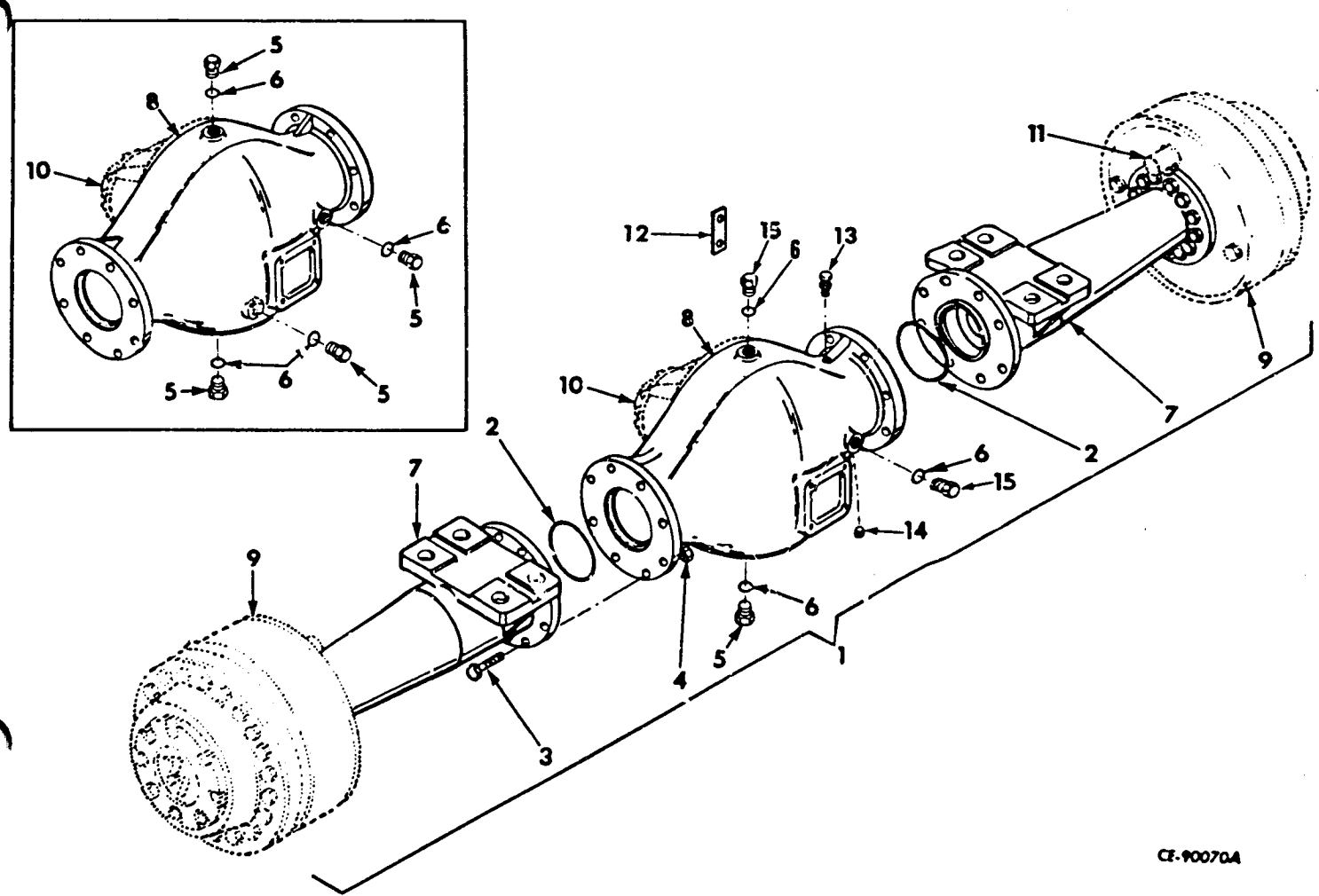
CE-113738

1	920 804 C91 25 279 R1	DRIVE SHAFT ASSEMBLY (x) BOLT, drive shaft — transmission to rear axle and transfer drive to front axle (Replaces 135 754 H1) (16)	2B	19 619 R91	FITTING, grease (Use w/SPIDER & BEARING, 136 142 H1)
	21 121 R1	NUT, 1/2-20NF Esna - Transmission to rear axle and transfer drive to front axle (Used only w/BOLT, 135 754 H1) (Order (16) BOLT, 25 279 R1) (16)	2B		FITTING, grease (Use w/SPIDER & BEARING, 630 389 C91) (Not furnished separately)
			3	135 914 H1	WASHER, felt retainer (2)
			4	135 915 H1	WASHER, felt
			5	135 916 H1	CAP, dust
2	136 142 H1	SPIDER & BEARING w/four SEAL, 38 014 HA and FITTING, 19 619 R1 (Order SPIDER & BEARING, 630 389 C91) (2)	5A	109 461	FITTING, grease
	21 205 R1 181 435 21 121 R1	BOLT (2-1/2" long) (8) BOLT (2" long) (8) NUT (Used with BOLT, 21 205 R1 only) (8)	6	175 046 H1	LOCK, nylon
				198 557 H1	KIT, dust cap repair (Consists of -
					1 CAP 135 916 H1
					1 LOCK 175 046 H1
					1 WASHER 135 915 H1
					2 WASHER 135 914 H1)
2	630 389 C91	SPIDER & BEARING w/four SEAL and FITTING (2)			
	21 205 R1 19 332 R1	BOLT (8) NUT (8)			
2A	38 014 HA	SEAL (Use w/SPIDER & BEARING, 136 142 H1) (4)			
2A		SEAL (Use w/SPIDER & BEARING, 630 389 C91) (Not furnished separately) (4)			

(x) - As Required

REF. NO.	PART NUMBER	DESCRIPTION	REF. NO.	PART NUMBER	DESCRIPTION
----------	-------------	-------------	----------	-------------	-------------

AXLE ASSEMBLY (THREE PIECE HOUSING)



CF-90070A

1	920 758 C95	AXLE ASSY (Standard) (Three piece housing (2) U002619 and below, C002633 and below (1) U002620 and up, C002634 and up	2	310 700 R1	"O" RING (2)	
1	930 897 C93	AXLE ASSY, front (Three piece housing) (Optional) U002619 and below, C002633 and below (Standard equipment) U002620 and up, C002634 and up	3	26 019 R1	BOLT (16)	
1	931 214 C93	AXLE ASSY (Optional) Heavy Duty, rear	4	25 531 R1 103 326	NUT (16) WASHER (32)	
	199 227 H3	BOLT (1-1/2" - 12 x 5" lg.) rear axle to frame (8)	5	220 150 H1	PLUG, magnetic (4) AXLE BOWL, (1) AXLE BOWL,	213 371 H2 930 591 C3
	192 196 H2	BOLT (1-1/2" - 12 x 5" lg.) front axle to frame (8)	6	368 269 R1	"O" RING (4) AXLE BOWL (3) AXLE BOWL	213 371 H2 930 591 C3
	26 649 R1	BOLT (1-1/2" - 6 x 4" lg.) front and rear axles to frame (16)	7	920 757 C2	HOUSING (2)	
	206 468 H2	WASHER (Used with BOLTS, 199 227 H3 and 192 196 H2) (16)	8	213 371 H2	BOWL, axle (Used on AXLE, 920 758 C92) (Order BOWL, 930 591 C1, BREATHER, 91 916 R1 and PLUG, 444 660)	
	206 468 H2	WASHER (Used with BOLT, 26 649 R1) (16)	8	930 591 C3	BOWL, axle (Used on AXLE, 920 758 C95 and 930 807 C93)	
	209 132 H1	NUT (Used with BOLTS, 199 227 H3 and 192 196 H2) (16)	9		PLANETARY HOUSING (Refer to Axle Shaft & Hub) (2)	
	25 985 R1	NUT (Used with BOLT, 26 649 R1) (16)				

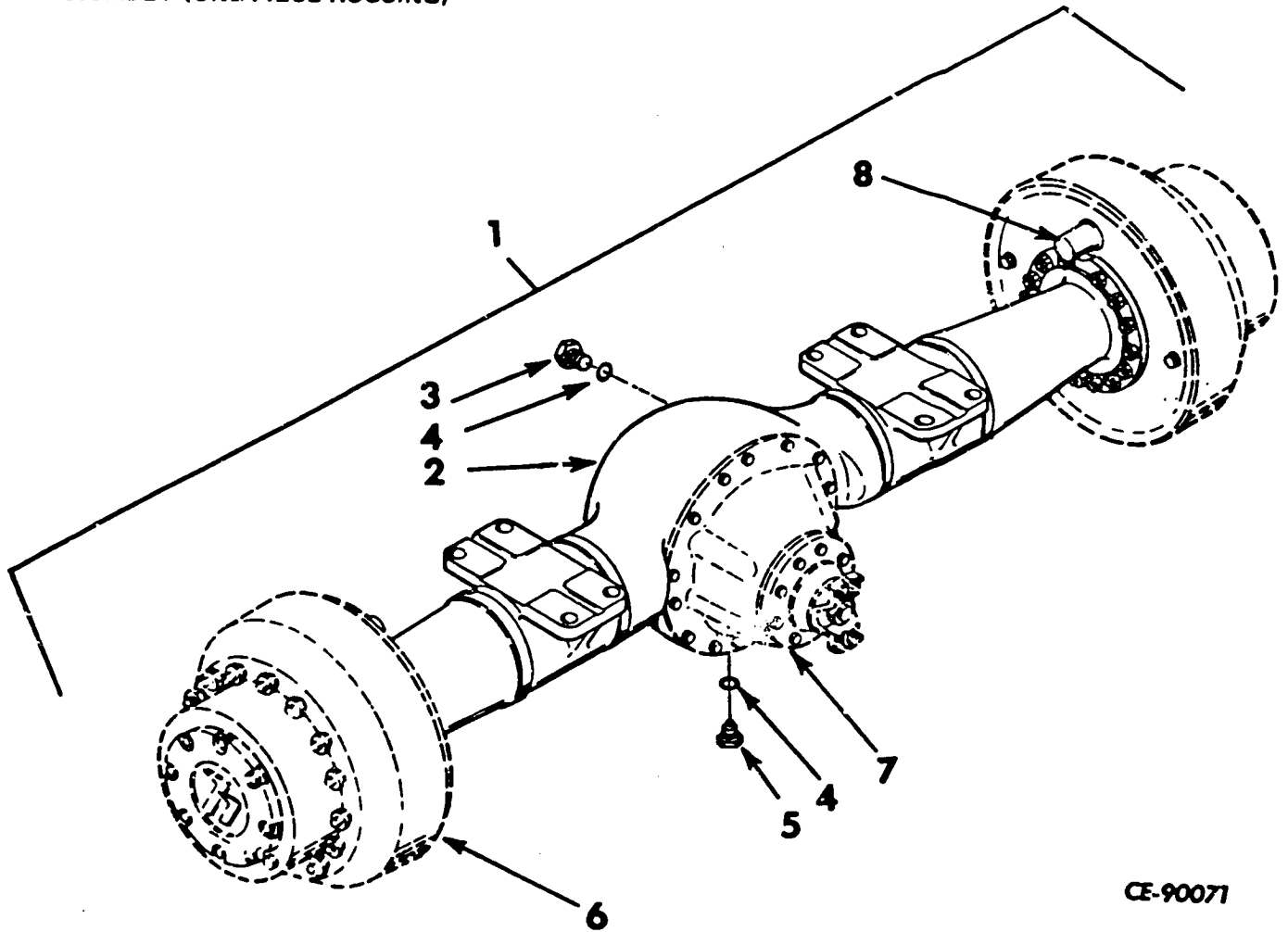
SOLID AXLE

REF. NO.	PART NUMBER	DESCRIPTION	REF. NO.	PART NUMBER	DESCRIPTION
AXLE ASSEMBLY (THREE PIECE HOUSING) - Continued					
	132 908 H1	DIFFERENTIAL (Refer to Differential Assembly) (2) GASKET, differential carrier (Used on AXLE, 920 758 C92)			
		BRAKE (Refer to Brake Group) (2)			
	172 848 H1	CLIP, break line tee mounting (2)			
	181 314	BOLT (2)			
	103 319	WASHER, lock (2)			
	103 024	NUT (2)			
	91 916 R1	BREATHER (Used on AXLE, 920 758 C95 and 930 897 C93)			
	444 660	PLUG (Used on AXLE, 920 758 C95 and 930 897 C93)			
	9 410 361	PLUG (Used on AXLE, 920 758 C95 and 930 897 C93)			

SOLID AXLE

REF. NO.	PART NUMBER	DESCRIPTION	REF. NO.	PART NUMBER	DESCRIPTION
----------	-------------	-------------	----------	-------------	-------------

AXLE ASSEMBLY (ONE PIECE HOUSING)



CE-90071

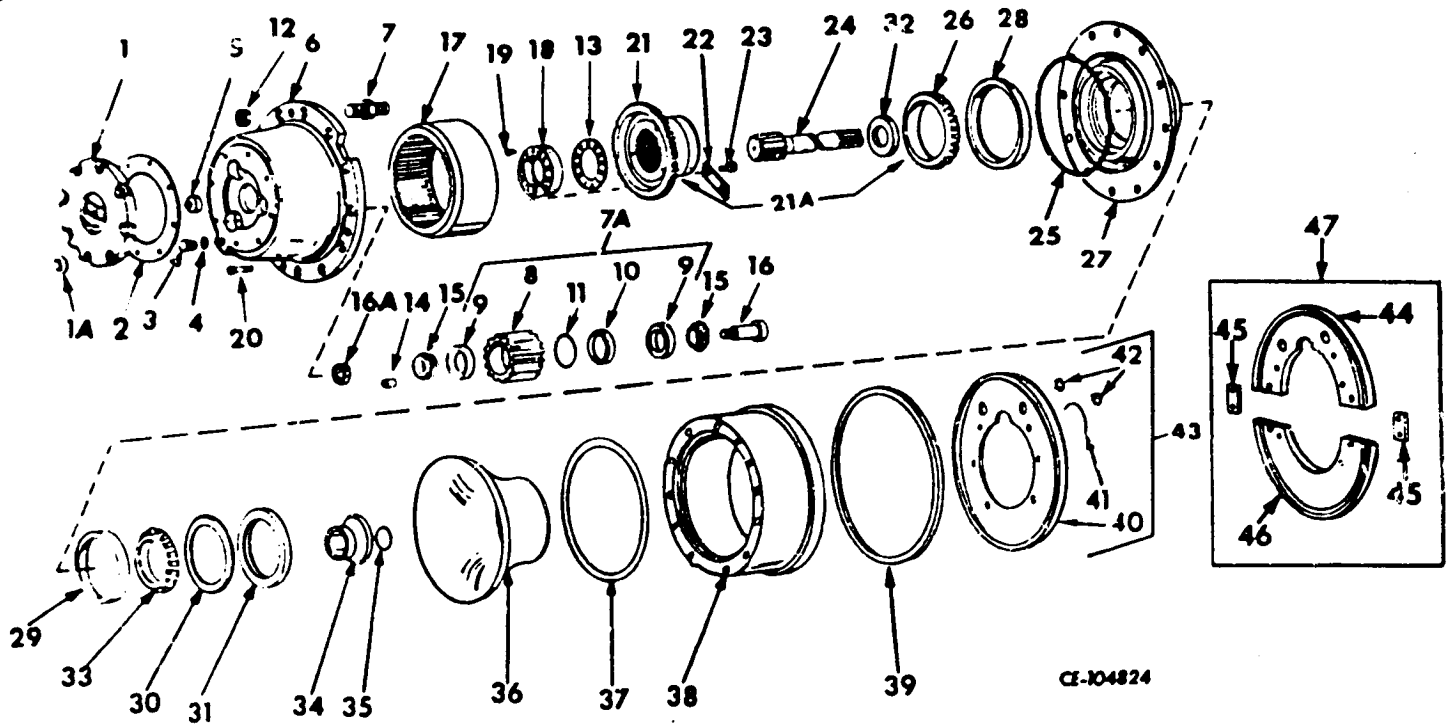
1	877 118 C92	AXLE ASSEMBLY (front) (one piece housing) (Order AXLE, 920 758 C95)	3	9 410 359	PLUG
2	221 178 H1	HOUSING, one piece axle (Order the following -	4	570 828 R1	"O" RING (2)
	16 BOLT	273 045	5	190 302 H1	PLUG
	1 BOWL	930 591 C3	6		PLANETARY HOUSING (Refer to Shaft & Hub) (2)
	1 BREATHER	91 916 R1	7		DIFFERENTIAL (Refer to Differential Assembly) (2)
	2 HOUSING	920 757 C1		132 908 H1	GASKET, differential carrier
	16 NUT	18 462 R1			
	3 "O" RING	368 269 R1	8		BRAKE (Refer to Brake Group) (2)
	1 PLUG	220 150 H1			
	2 PLUG	9 410 381)			



SOLID AXLE

REF. NO.	PART NUMBER	DESCRIPTION	REF. NO.	PART NUMBER	DESCRIPTION
----------	-------------	-------------	----------	-------------	-------------

AXLE SHAFT AND HUB



1	929 477 C1	COVER, planet carrier (Used on AXLE, 920 758 C95) (4)	9	117 552 H1	CUP, roller bearing (24)
	24 840 R1	BOLT (32)	10	175 808 H1	SPACER (12)
1	219 610 H1	COVER w/BUTTON, 174 050 H3, planet cover (Order COVER, 885 629 C2) (Used on AXLE, 920 758 C92 only) (4)	11	175 809 H1	RING, retaining (12)
	885 629 C2	COVER, planet carrier (Used on AXLE, 920 758 C92) (4)	12	217 164 H1	NUT (42)
	887 405 C1	BOLT, jaylock (32)	13	197 781 H2	SHIM (.005) (x)
	24 840 R1	BOLT (32)		197 782 H2	SHIM (.020) (x)
1A		WASHER, sealing (Order BOLT, 887 405 C1) (32)		882 046 C1	SHIM (.050) (x)
2	174 049 H1	GASKET (4)	14	130 019 H1	PIN, dowel (12)
3	190 302 H1	PLUG (4)	15	175 810 H1	CONE, roller bearing (24)
4	570 828 R1	"O" RING (4)	16	214 883 H1	SHAFT, planet pinion (12)
5	174 050 H3	BUTTON, thrust (Use w/COVER, 219 610 H1 only) (4)	16A	214 882 H1	NUT (12)
6	217 150 H1	CARRIER, planet (4)	17	174 059 H3	GEAR, ring (4) Axle S/N 4920 and below (Order four BAR, 923 822 C1 and GEAR, 923 968 C1)
7	217 146 H3	STUD (42)	17	923 968 C1	GEAR, ring (4) Axle S/N 4921 and up
7A	1 109 758 C91	PLANET GEAR & CUP ASSY (Replaces 176 240 H1) (12)			
8	649 070 C1	PINION, planet (Replaces 174 053 H1) (12)			(x) - As Required.

SOLID AXLE

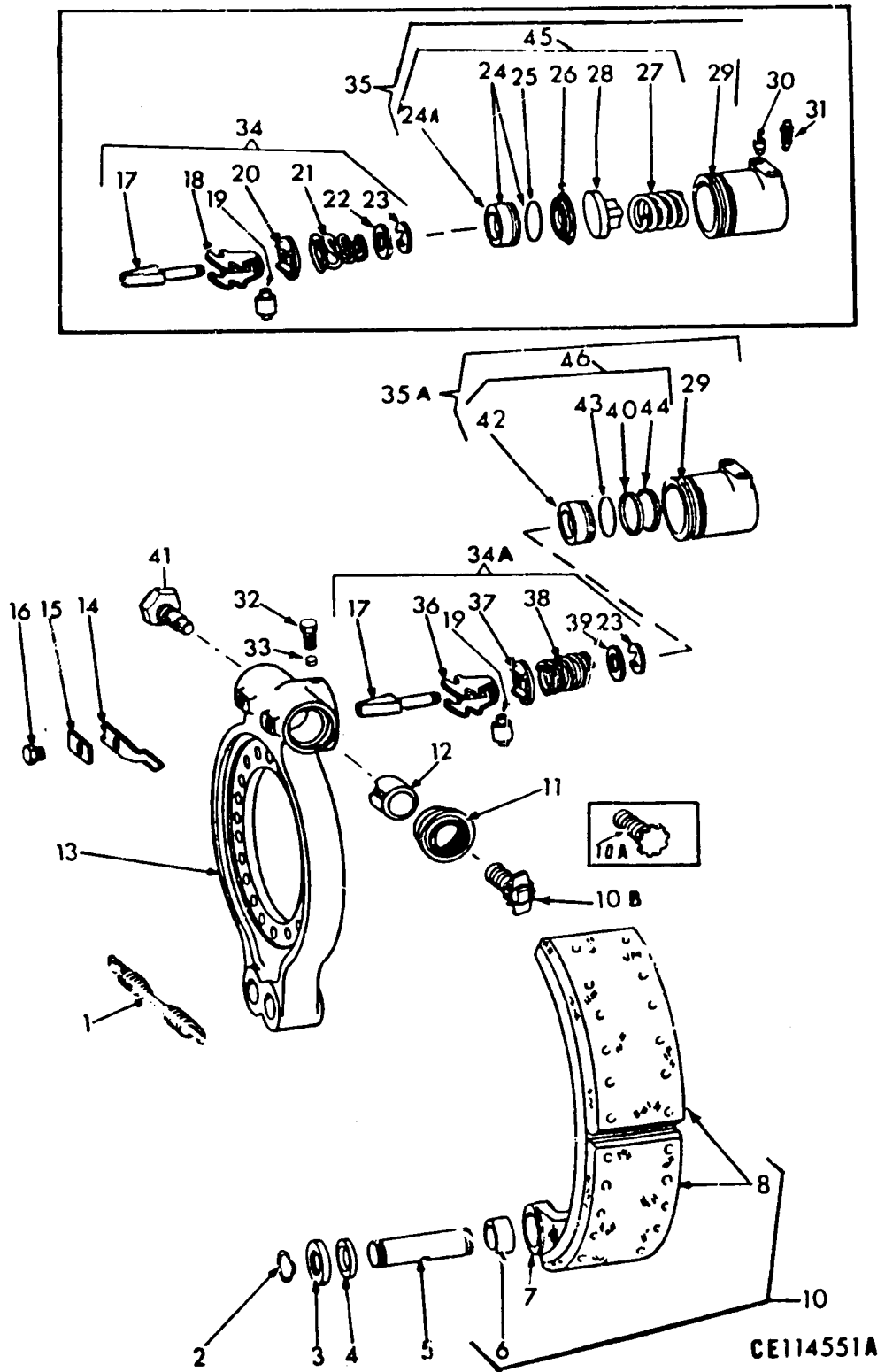
REF. NO.	PART NUMBER	DESCRIPTION	REF. NO.	PART NUMBER	DESCRIPTION
AXLE SHAFT AND HUB - Continued			44		SHIELD, upper half (Not furnished separately) (2)
18	209 324 F1	RETAINER		24 839 R1 120 302	BOLT, 3/8NC x 3/4" (6) WASHER, 3/8" lock (6)
19	209 325 H1	BOLT (48)	45		BAR (Not furnished separately) (4)
20	876 726 C1	BOLT (24)		25 480 R1 26 110 R1	BOLT, 1/4NC x 5/8" (8) NUT, 1/4 (8)
21	174 061 H1	HUB, ring gear (8)	46		SHIELD, lower (Not furnished separately) (2)
21A	176 239 H1	HUB w/CONE, 614 921 C91, ring gear (4)		24 839 R1 120 382	BOLT, 3/8NC x 3/4" (6) WASHER, 3/8" lock (6)
22	174 062 H1	BAR, ring gear lock plate (Use w/GEAR, 174 059 H3 only) (16)	47	931 623 C91	KIT, dust shield (Contains parts necessary for complete installation to both sides of one axle) (x)
22	923 822 C1	BAR, ring gear lock plate (Use w/GEAR, 923 968 C1 only) (16)		207 041 H1	GASKET, liquid plastic (pint container) (x)
23	9 410 369	BOLT (16)		217 148 H1	CARRIER ASSEMBLY (Composed of -
24	203 192 H2	SHAFT, axle (4)			1 CARRIER 217 150 H1
25	174 076 H1	RING (4)			3 CONE 77 158 H1
26	614 921 C91	CONE, roller bearing (4)			3 NUT 214 882 H1
27	888 202 C1	HUB (4)			3 PIN 130 019 H1
28	614 922 C1	CUP (4)			3 PLANET GEAR & CUP ASSY 176 240 H1
28	614 922 C1	CUP (4)			3 SHAFT 214 883 H1)
29	62 874 R1	CUP (4)		888 271 C91	HUB ASSEMBLY (see NOTE 1) (Composed of -
30	174 098 H1	SPACER (4)			1 CONE 62 873 R91
31	174 099 H1	SEAL (4)			1 CUP 62 874 R1
32	174 069 H1	SEAL, oil (4) Axle S/N 7421 and below			1 CUP 614 921 C91
33	62 873 R91	CONE, roller bearing (4)			1 HUB 888 202 C1
34	221 148 H1	RETAINER, ring (4)			1 SEAL 174 099 H1
35	285 253 R1	"O" RING (4)			1 SPACER 174 098 H1)
36	174 077 H4	SCAVENGER (4)			
37	176 215 H1	RING (4)			
38	217 149 H3	DRUM, brake (4)			
39	174 081 H1	SEAL, brake drum (For units so equipped) (4)			
40	194 612 H1 179 837 103 321	SHIELD (For units so equipped) (4) BOLT, 3/8NC x 3/4" (24) WASHER, 3/8" lock (24)			
41	194 611 H1	SEAL, cylinder (For units so equipped) (4)			
42	432 607	BUTTON, plug (For units so equipped) (8)			
43	194 610 H1	SHIELD ASSEMBLY (For units so equipped) (4)			

NOTE 1 - Assembly no longer available. Individual parts to be furnished.

(x) - As Required.

SOLID AXLE

BRAKE GROUP



SOLID AXLE

REF. NO.	PART NUMBER	DESCRIPTION	REF. NO.	PART NUMBER	DESCRIPTION
BRAKE GROUP - Continued			10B	944 043 C1	BOLT, adjusting (1-1/8" diameter thread) (D, E, and F) (2)
A	877 304 C92	BRAKE ASSY (Order two BRAKE ASSEMBLIES, 877 304 C97) (See NOTE 1) (4)	11	615 132 C2	SEAL (A, D, and C) (2)
B	877 304 C93	BRAKE ASSY (Order two BRAKE ASSEMBLIES, 877 304 C97) (See NOTE 1) (4)	11	1 102 353 C1	SEAL (D, E, and F) (2)
C	877 304 C94	BRAKE ASSY (Order two BRAKE ASSEMBLIES, 877 304 C97) (See NOTE 1) (4)	12	876 948 C1	PLUNGER (A, B, and C) (2) (Order the following parts - 1 BOLT 944 043 C1 1 PLUNGER 944 272 C1 1 SEAL 1 102 353 C1)
D	877 304 C95	BRAKE ASSY (Order two BRAKE ASSEMBLIES, 877 304 C97) (See NOTE 1) (4)	12	944 272 C1	PLUNGER (D, E, and F) (2)
E	877 304 C96	BRAKE ASSY (Order two BRAKE ASSEMBLIES, 877 304 C97) (See NOTE 1) (4)	13		SPIDER, brake (Not furnished separately) BOLT, 2-1/2" long (24) BOLT, 1-3/4" long (6) NUT (24) WASHER (6)
F	877 304 C97	BRAKE ASSY (4) (Consists of the following parts -	14	324 945 C1	DETENT (A and B) (2)
1	698 699 C1	SPRING, return (black) (A and B)	15	347 155 R1	LOCK (2)
1	930 468 C1	SPRING, return (green) (Order SPRING, 930 468 C2) (C)	16	324 946 R1	GUIDE (2)
1	930 468 C2	SPRING, return (yellow) (D, E, and F)	17		WEDGE (Not furnished separately)
	155 110 H1	RETAINER, spring (4)	18	196 891 H1	GAUGE
3	56 122 R1	RETAINER (4)	19	196 892 H1	ROLLER (2)
4	155 108 H1	FELT (4)	20	197 764 H1	WASHER
5	155 107 H2	PIN, anchor (2)	21	186 612 H1	SPRING
6	95 373 R2	BUSHING (4)	22	197 763 H1	WASHER
7		SHOE, brake (Not furnished separately)	23	373 523 R1	WASHER "E"
8		LINING (Order LINING KIT, 201 702 H1) (A and B)	24	881 464 C11	PISTON w/"O" RING, 707 253 R1
	83 829 R1	RIVET (60)	24A	881 464 C1	PISTON
8		LINING (Order LINING KIT, 944 535 C93) (C, D, E and F)	25	707 253 R1	"O" RING
	83 829 R1	RIVET (60)	26	201 715 H1	CUP
10	928 388 C91	SHOE and LINING ASSY (A and B) (2)	27	201 713 H1	SPRING
10	935 965 C91	SHOE and LINING ASSY (Order four SHOE and LINING ASSEMBLY, 937 907 C91) (Used w/SPRING, 930 468 C1) (See NOTE 2) (C) (2)	28	876 396 C1	PLUG
10	937 907 C91	SHOE and LINING ASSY (D, E, and F) (2)	29	876 308 C91	HOUSING (A and B)
10A	196 882 H1	BOLT, adjusting (A and B) (2)	29		HOUSING (Not furnished separately) (C, D, E, and F)
10B	630 225 C1	BOLT, adjusting (1" diameter thread) (C) (2) (Order the following parts - 1 BOLT 944 043 C1 1 PLUNGER 944 272 C1 1 SEAL 1 102 353 C1)	NOTE 1 - Replace both BRAKE ASSEMBLIES on one axle.		
			NOTE 2 - When replacing SHOE and LININGS, 935 965 C91, order four SHOE and LININGS, 937 907 C91. Do not intermix old SHOE and LININGS with new SHOE and LININGS on the same axle.		

SOLID AXLE

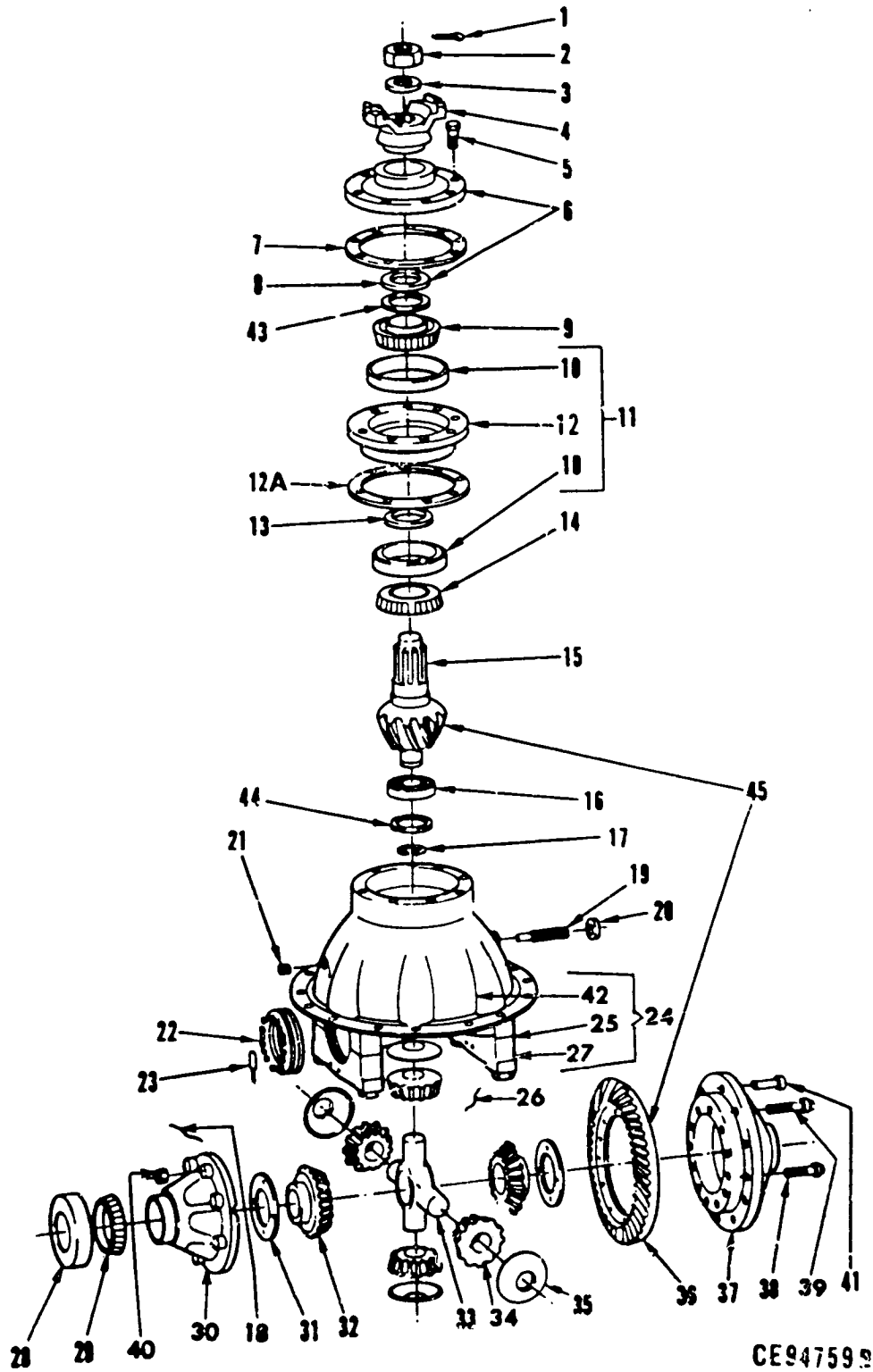
REF. NO.	PART NUMBER	DESCRIPTION	REF. NO.	PART NUMBER	DESCRIPTION
BRAKE GROUP - Continued			882 998 C1	SPIDER ASSY (A and B) (Consists of -	
30	324 991 R1	SEAT, tube (A and B)		2 BOLT	196 882 H1
31	324 989 R1	SCREW, bleeder (A and B)		2 DETENT	324 945 C1
32	102 452	SCREW, set (A and B)		2 GUIDE	324 946 C1
32		SCREW, set (Not furnished separately) (C, D and F)		2 LOCK	347 155 R1
33	324 990 R1	PLUG (A and B)		2 PLUNGER	876 948 C1
33		PLUG (Not furnished separately) (C, D and E)		2 SEAL	615 132 C2
34	19 775 H1	WEDGE ASSY (3-1/2" long) (A and B)		§ 1 SPIDER)
34A	931 169 C91	WEDGE ASSY (5" long) (C, D, E and F)	935 964 C92	SPIDER ASSY (C, D, E and F) (Consists of -	
35	876 304 C91	WHEEL CYLINDER ASSY (A and B)		2 BOLT	944 403 C1
35A	935 967 C93	WHEEL CYLINDER ASSY (C, D, E and F)		2 GUIDE	324 946 R1
36	931 292 C1	CAGE, roller retainer		2 LOCK	347 155 R1
37	931 294 C1	WASHER		2 PLUNGER	944 272 C1
38	931 291 C1	SPRING, v edge		2 SEAL	1 102 353 C1
39	931 293 C1	WASHER		§ 1 SPIDER)
40	935 369 C1	RING, back-up			
41	324 946 R1	PLUNGER, guide (C, D, E and F)			
42		PISTON (Order KIT, 944 534 C92)			
43	28 107 R1	"O" RING			
44	1 111 358 C1	SEAL			
45	881 465 C91	KIT, wheel cylinder (A and B)			
46	944 534 C92	KIT, wheel cylinder (C, D, E and F)			
	201 702 H1	KIT, lining (Riveted) (A and B) (Consists of two ANCHOR END LININGS, two ADJUSTMENT END LININGS, and sixty RIVETS, 83 829 R1) (x)			
	944 535 C93	KIT, lining (Riveted) (C, D, E and F) (Consists of two ANCHOR END LININGS, two ADJUSTMENT END LININGS and sixty RIVETS, 83 829 R1) (See NOTE 3) (x)			

NOTE 3 - When replacing bolt on LININGS for brake assembly (D, E, F), do both sides of axle. Do not intermix riveted and bolt on Linings on same AXLE.

(x) - As Required.

§ - Not Furnished Separately.

DIFFERENTIAL ASSEMBLY



CE947599

REF. NO.	PART NUMBER	DESCRIPTION	REF. NO.	PART NUMBER	DESCRIPTION
DIFFERENTIAL ASSEMBLY - Continued			6	91 002 R11	COVER w/SEAL, 387 309 C91 (Differential A)
Parts without letters after the description indicates the part is used on all Differential Assemblies listed below: Letters "A", "B", "C", and "D" are used to identify separate Differential Assemblies.			6	69 227 R11	COVER w/SEAL, 405 368 C91 (Differentials B, C & D)
A	875 679 C91	DIFFERENTIAL ASSY (A28-3200-D-368) (Standard equipment) U002619 and below (2) C002633 and below (2) (Standard equipment rear) U001001 and up C001001 and up	7	137 058 H1	GASKET, cage cover (Differential A)
B	890 993 C91	DIFFERENTIAL ASSY, Optional Heavy Duty-Rear (A24-3200-G-969)	7	154 405 H1	GASKET, cage cover (Differentials B & C)
C	920 797 C91	DIFFERENTIAL ASSY, Optional Heavy Duty-Front (C39-3200-H-606) (Order DIFFERENTIAL ASSY, 928 951 C92) U002619 and below C002633 and below	7	69 228 R1	GASKET, cage cover (Differential D)
D	928 951 C92	DIFFERENTIAL ASSY (A72-3200-J-764) (Optional Heavy Duty-Front) U002619 and below C002633 and below (Standard Heavy Duty-Front) U002620 and up C002634 and up	8	387 309 C91	SEAL, oil (Differential A)
	922 865 C1	BOLT (1-3/4" lg) (Order BOLT, 25 509 R1) (10)	8	405 368 C91	SEAL, oil (Differentials B, C & D)
	25 509 R1	BOLT (1-5/8" lg) (10)	9	944 033 C91	CONE, outer pinion (Differential A)
	922 844 C1	BOLT (2" lg) (4)	9	879 767 R91	CONE, outer pinion (Differentials B, C & D)
	24 874 R1	BOLT (1-3/4" lg) (4)	10	68 875 R1	CUP, pinion (Differential A) (2)
	25 537 R1	WASHER (Used with BOLT, 25 509 R1 and BOLT, 24 874 R1) (14)	10	107 580 R1	CUP, pinion (Differentials B, C & D) (2)
1	103 390	PIN, cotter (1/8 x 2 x 1/4") (Differential B, C & D)	11	136 291 H1	PINION CAGE & CUP ASSEMBLY (Differential A)
2	440 300 C1	NUT (Differential A)	11	879 766 R91	PINION CAGE & CUP ASSEMBLY (Differentials B, C & D)
2	440 301 C1	NUT (Differential C & D)	12		CAGE (Not furnished separately)
2	154 408 H1	NUT (Differential B)	12A	132 901 H1	SHIM (.003) (Differential A) (2)
3	72 608 R1	WASHER (Differential A)	12A	132 902 H1	SHIM (.005) (Differential A) (6)
4	136 298 H1	YOKE & SLINGER (Differential A)	12A	132 903 H1	SHIM (.010) (Differential A) (5)
4	155 024 H1	YOKE & SLINGER (Differentials B, C & D)	12A	154 372 H1	SHIM (.005) (6) (Differential B) (1) (Differential C & D)
5	340 340 R1	BOLT, 1/2NC x 1-1/2" oil seal cover (Differential A) (8)	12A	69 225 R1	SHIM (.010) (5) (Differential B) (3) (Differential C & D)
5	98 680 R1	BOLT, oil seal cover (Differentials B & C) (8)	12A	75 710 R1	SHIM (.003) (Differential B, C & D)
	20 653 R1	BOLT, 1/2NC x 1-5/8" pinion bearing cage (Differential D) (8)	13	136 278 H1	SPACER (.220) (Differential A) (x)
			13	136 279 H1	SPACER (.221) (Differential A) (x)
			13	136 280 H1	SPACER (.222) (Differential A) (x)
			13	136 281 H1	SPACER (.223) (Differential A) (x)
			13	136 282 H1	SPACER (.224) (Differential A) (x)
			13	136 283 H1	SPACER (.225) (Differential A) (x)

(x) - As Required.

REF. NO.	PART NUMBER	DESCRIPTION	REF. NO.	PART NUMBER	DESCRIPTION
DIFFERENTIAL ASSEMBLY - Continued			18		WIRE, locking (16 ga. x 12" long) (Cut from bulk WIRE, 278 027 R1) (2) (Differential A) (4) (Differentials B, C & D)
13	136 284 H1	SPACER (.231) (Differential A) (x)			
13	136 285 H1	SPACER (.237) (Differential A) (x)			
13	136 286 H1	SPACER (.243) (Differential A) (x)	19	881 046 C1	SCREW, thrust
13	90 996 R1	SPACER (.249) (Differential A) (x)	20	132 787 H1	NUT, adjusting screw
13	69 272 R1	SPACER (.248) (Differentials B, C & D) (x)	21	1 103 032 C1	PLUG, oil filler & level
13	69 273 R1	SPACER (.249) (Differentials B, C & D) (x)	22	56 031 R2	RING, adjusting (Differential A) (2)
13	69 274 R1	SPACER (.250) (Differentials B, C & D) (x)	22	192 278 R1	RING, adjusting (Differentials B, C & D) (2)
13	69 275 R1	SPACER (.251) (Differentials B, C & D) (x)	23	683 774 R1	PIN, adjusting ring cotter (Differential A) (2)
13	69 276 R1	SPACER (.252) (Differentials B, C & D) (x)	23	306 186 C1	PIN, adjusting ring cotter (Differentials B, C & D) (2)
13	69 277 R1	SPACER (.253) (Differentials B, C & D) (x)	24	132 913 H1	DIFFERENTIAL CARRIER & CAP ASSEMBLY (Also includes PIN, 683 774 R1) (Differential A)
13	69 278 R1	SPACER (.259) (Differentials B, C & D) (x)	24	892 621 C91	DIFFERENTIAL CARRIER & CAP ASSEMBLY (Differential B)
13	69 279 R1	SPACER (.265) (Differentials B, C & D) (x)	24	178 939 H1	DIFFERENTIAL CARRIER & CAP ASSEMBLY (Also includes PIN, 306 183 C1) (Differential C)
13	69 280 R1	SPACER (.271) (Differentials B, C & D) (x)	24	929 343 C91	DIFFERENTIAL CARRIER & CAP ASSEMBLY (Also includes PIN, 306 186 C1) (Differential D)
13	69 281 R1	SPACER (.277) (Differentials B, C & D) (x)	25	73 311 R1	DOWEL (4)
13	69 282 R1	SPACER (.283) (Differentials B, C & D) (x)	26		WIRE, locking (16 ga. x 15" long) (Cut from bulk WIRE, 278 027 R1) (Differential A) (2)
13	154 404 H1	SPACER (.289) (Differential B) (x)	26		WIRE, locking (16 ga. x 16" long) (Cut from bulk WIRE, 278 027 R1) (Differentials B & C) (2)
14	944 035 C91	CONE, inner pinion (Differential A)	27		CAP, bearing (Not furnished separately) (2)
14	860 954 R91	CONE, inner pinion (Differentials B, C & D)	232 358 R1		WASHER, special (Differential C) (4)
15		PINION (Not furnished separately)	91 075 R1		BOLT, special (4) (Differential A & C)
16	91 082 R91	BEARING, rear (Differential A)	25 516 R1		BOLT (Differentials B & D) (4)
16	76 620 R91	BEARING, rear (Differential B, C & D)	232 359 R1		WASHER, special (Differential A, B & D)
17	91 081 R2	RING, lock (Differential A)	28	ST-969	CUP, differential (Differential A) (2)
17	104 209 R1	RING, lock (Differential B)	28	69 207 R1	CUP, differential (Differentials B, C & D) (2)
17	454 331 R1	RING, lock (Differential C & D)			

(x) - As Required.

SOLID AXLE

REF. NO.	PART NUMBER	DESCRIPTION	REF. NO.	PART NUMBER	DESCRIPTION
DIFFERENTIAL ASSEMBLY - Continued			38	72 331 R1	BOLT, short (Use w/Differential Case Assembly, 13E 296 H1 only) (Differential A) (4)
29	ST-2022	CONE, bearing (Differential A) (2)	38	876 416 C1	BOLT, lockwire (Order four BOLT, 26 570 R1) (Differential A) (4)
29	69 206 R91	CONE, bearing (Differentials B, C & D) (2)	38	26 570 R1	BOLT, short (Use w/Differential Case Assembly, 921 889 C1 only) (Differential A) (4)
30		CASE, plain (Not furnished separately) (Order DIFFERENTIAL CASE ASSEMBLY, 921 889 C1) (A) (Order DIFFERENTIAL CASE ASSEMBLY, 892 624 C91) (B) (Order DIFFERENTIAL CASE ASSEMBLY, 933 566 C1) (C) (Order DIFFERENTIAL CASE ASSEMBLY, 929 345 C1) (D)	38	261 742 C1	BOLT, lockwire (Order four BOLT, 447 864 C1 and four NUT, 941 223) (Differentials B & C) (4)
31	90 942 R1	WASHER, side gear thrust (Differential A) (2)	38	447 864 C1	BOLT, 5-3/4" long (Use w/Differential Case Assembly, 69 198 R1 only) (Differential C) (4)
31	56 030 R1	WASHER, side gear thrust (Differentials B, C & D) (2)	38	24 878 R1	BOLT, 2-3/4" long (Use w/Differential Case Assembly, 933 566 C1 only) (Differential C) (4)
32	132 911 H1	GEAR, differential side (Differential A) (2)	38	24 878 R1 449 671 C1	BOLT, short (Differential D) (4) WASHER, special (4)
32	892 625 C1	GEAR, differential side (Differentials B, C & D) (2)	39	136 275 H	BOLT, long (Use w/Differential Case Assembly, 136 296 H1 only) (Differential A) (4)
33	91 003 R1	SPIDER (Differential A)	39	920 287 C1	BOLT, lockwire (Order eight BOLT, 26 572 R1) (Differential A) (8)
33	212 042 H1	SPIDER (Differentials B & D)	39	26 572 R1	BOLT, long (Use w/Differential Case Assembly, 291 889 C1) (Differential A) (8)
33	56 026 R1	SPIDER (Differential C)	39	680 015 R1	BOLT, lockwire (Order eight BOLT, 447 865 C1 and eight NUT, 9 412 231) (Differentials B & C) (8)
34	132 910 H1	GEAR, differential pinion (Differential A) (4)	39	447 865 C1	BOLT, 6-3/4" long (Use w/Differential Case Assembly, 69 198 R1 only) (Differential C) (8)
34	212 041 H1	GEAR, differential pinion (Differentials B & D) (4)	39	25 510 R1	BOLT, 3-3/4" long (Use w/Differential Case Assembly, 933 566 C1 only) (Differential C) (8)
34	154 383 H1	GEAR, differential pinion (Differential C) (4)	39	25 510 R1 449 671 R1	BOLT (Differential D) (8) WASHER, special (8)
35	132 893 H1	WASHER, pinion thrust (Differential A) (4)	40	878 157 R1	NUT, special (Use w/Differential Case Assembly, 136 296 H1 only) (Differential A) (12)
35	212 040 H1	WASHER, pinion thrust (Differentials B & D) (4)	40	9 412 231	NUT, 5/8NC (Differential B) (12)
35	56 028 R1	WASHER, pinion thrust (Differential C) (4)	40	19 581 R1	NUT, 5/8NC (Used w/BOLT, 261 742 C1) (Order four BOLT, 447 864 C1 and four NUT 9 412 231) (Differentials B & C) (12)
36		GEAR, drive (Not furnished separately)	40	9 412 231	NUT, 5/8NC (Use w/Differential Case Assembly, 69 198 R1 and CASE, 892 624 C91 only) (Differentials B & C) (12)
37		CASE, flange half (Not furnished separately) (Order DIFFERENTIAL CASE ASSEMBLY, 921 889 C1) (A) (Order DIFFERENTIAL CASE ASSEMBLY, 892 624 C91) (B) (Order DIFFERENTIAL CASE ASSEMBLY, 933 566 C1) (C) (Order DIFFERENTIAL CASE ASSEMBLY, 929 345 C1) (D)			

REF. NO.	PART NUMBER	DESCRIPTION	REF. NO.	PART NUMBER	DESCRIPTION
DIFFERENTIAL ASSEMBLY - Continued			929 345 C1	DIFFERENTIAL CASE ASSEMBLY (Differential D) (Consists of FLANGE HALF CASE and PLAIN CASE)	
41	60 826 R1	RIVET, differential drive gear (Differential A) (12)	892 623 C91	DIFFERENTIAL ASSEMBLY (Differential B) (Composed of -	
41	447 867 C1	BOLT (12)	8	BOLT	680 015 R1
	449 671 R1	WASHER (12)	4	BOLT	261 274 C1
	9 412 231	NUT (12) (Differentials B, C & D)	1	DIFFERENTIAL CASE ASSEMBLY	
42		CARRIER, differential (Not furnished separately)			892 624 C9
43	69 414 R1	WASHER, bearing (Differentials B & C)	4	GEAR	212 041 H1
44	104 208 R1	RETAINER, pinion rear bearing (Differentials B, C & D)	2	GEAR	892 625 C1
45	156 074 H1	GEAR & PINION SET (Differential A)	x	LOCKWIRE	278 027 R1
45	892 656 C1	GEAR & PINION SET (Differential B)	12	NUT	19 581 R1
45	922 563 C91	GEAR & PINION SET (Differentials C & D)	1	SPIDER	212 042 H1
	278 027 R1	WIRE, bulk lock (16 ga.) 50' long (x)	2	WASHER	56 030 R1
	136 296 H1	DIFFERENTIAL CASE ASSEMBLY (Consists of FLANGE HALF CASE and PLAIN CASE) (Differential A) and below (Order four BOLT, 26 570 R1, eight BOLT, 26 572 R1 and DIFFERENTIAL CASE ASSEMBLY, 921 889 C1)	12	WASHER	449 671 R1
	921 889 C1	DIFFERENTIAL CASE ASSEMBLY (Together w/four BOLT, 26 570 R1 and eight BOLT, 26 572 R1 will work for DIFFERENTIAL CASE ASSEMBLY, 136 296 H1) (Differential A) * and up (Consists of FLANGE HALF CASE and PLAIN CASE)	922 562 C92	DIFFERENTIAL ASSEMBLY (Differential C) (Composed of -	
	892 624 C91	DIFFERENTIAL CASE ASSEMBLY (Differential B) (Consists of FLANGE HALF CASE and PLAIN CASE)	4	BOLT	24 878 R1
	69 198 R1	DIFFERENTIAL CASE ASSEMBLY (Differential C) (Consists of FLANGE HALF CASE and PLAIN CASE) (Used with eight BOLT, 447 865 C1 and four BOLT, 447 864 C1) (Order CASE, 933 566 C1, eight BOLT, 25 510 R1, and four BOLT, 24 878 R1)	8	BOLT	25 510 R1
	933 566 C1	DIFFERENTIAL CASE ASSEMBLY (Differential C) (Consists of FLANGE HALF CASE and PLAIN CASE) (Used with eight BOLT, 25 510 R1 and four BOLT, 24 878 R1)	1	DIFFERENTIAL CASE ASSEMBLY	
			4	GEAR	933 566 C1
			2	GEAR	154 383 H1
			1	SPIDER	892 625 C1
			4	WASHER	56 026 R1
			2	WASHER	56 028 R1
			2	WASHER	56 030 R1
			12	WASHER	449 671 R1
			929 344 C91	DIFFERENTIAL ASSEMBLY (Differential D) (Consists of the following parts -	
			8	BOLT	25 510 R1
			4	BOLT	24 878 R1
			1	DIFFERENTIAL CASE ASSEMBLY	
					929 345 C1
			2	GEAR	892 625 C1
			4	GEAR	212 041 H1
			1	SPIDER	212 042 H1
			2	WASHER	56 030 R1
			4	WASHER	212 040 H1
			12	WASHER	449 671 R1
			892 622 C91	DIFFERENTIAL DRIVE GEAR & PINION ASSEMBLY (Differential B) (Composed of -	
			1	BEARING	76 620 R9
			12	BOLT	447 867
			1	DIFFERENTIAL ASSEMBLY 892 623 C91	
			1	GEAR & PINION SET 892 656 C1	
			1	LOCK RING	104 209 R1
			12	NUT	9 412 231
			12	WASHER	449 671 R1

* - Serial Number Not Available.

(x) - As Required.