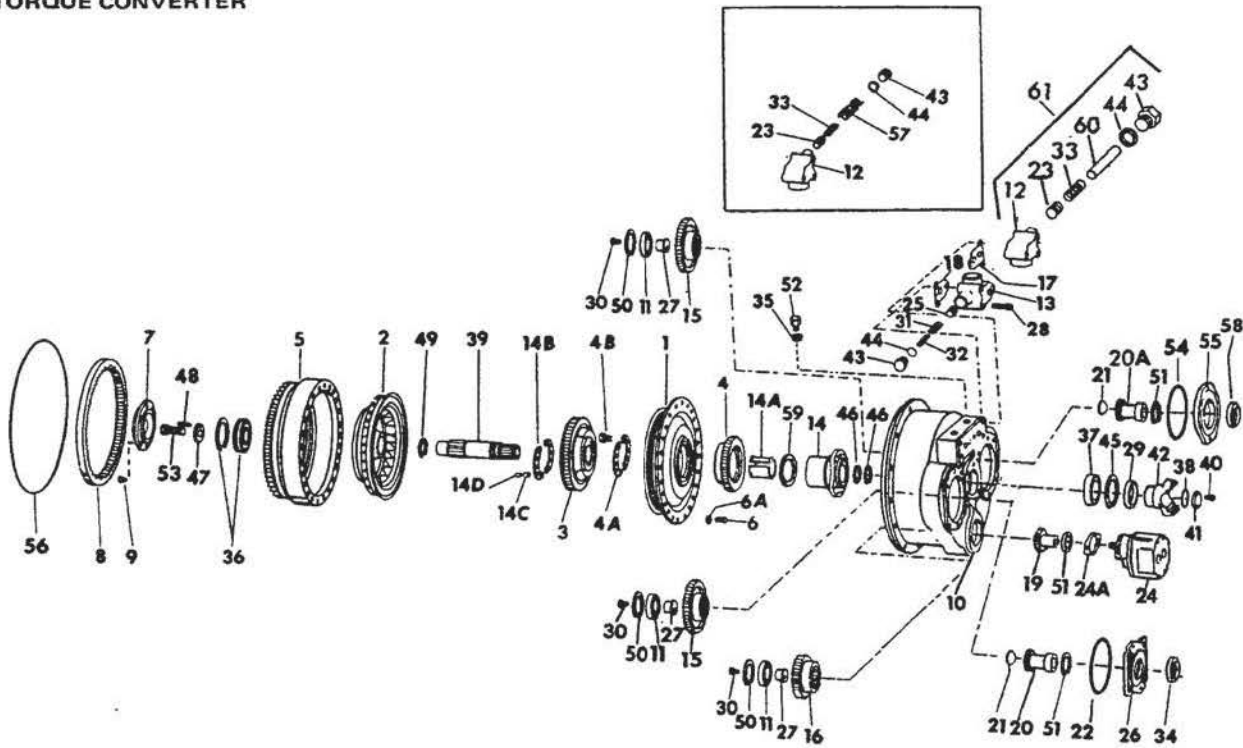


DRIVE TRAIN

REF. NO.	PART NUMBER	DESCRIPTION	REF. NO.	PART NUMBER	DESCRIPTION
----------	-------------	-------------	----------	-------------	-------------

TORQUE CONVERTER



CE102240 E

		Parts without letters after the description indicates the part is used for all Torque Converter Assemblies listed below: Letters "A", "B" and "C" are used to identify separate Torque Converter Assemblies			
A	926 984 C91	TORQUE CONVERTER ASSEMBLY (Order Torque Converter, 926 984 C93) U002179 and below C002164 and below	3	222 676 H1	WHEEL, guide
			4	222 677 H1	GEAR w/BUSHING ASSEMBLY, pump drive (Order GEAR, 933 780 C91, CARRIER, 933 821 C1 and RING, 934 207 C1) (A)
			4	933 780 C91	GEAR ASSEMBLY, pump drive w/BUSHING, 933 781 C1 (B and C) BUSHING
			4A	222 680 H1	PLATE, clamp (2)
B	926 984 C92	TORQUE CONVERTER ASSEMBLY (Order Torque Converter, 926 984 C93) U002180 to 2586 C002165 to *	4B	181 595	BOLT, 5/16-24 x 3/4" hex hd (8)
			5	222 678 H1	HOUSING, rotating
C	926 984 C93	TORQUE CONVERTER ASSEMBLY U002587 and up C0* and up	6	25 492 R1	BOLT, 5/16-18NC x 7/8" hex hd (24)
			6A	Q-243	WASHER, 5/16" flat (24)
	140 483 H	BOLT, converter mounting (12)	7	883 085 C2	RETAINER, bearing
	24 841 R1	BOLT, drive ring mounting (16)	8	278 925 R2	RING, driving
	120 382	WASHER, drive ring lock (16) (Consists of the following parts except Ref. No. 56 -	9	179 837	BOLT, 3/8NC x 3/4" (6)
1	888 576 C1	WHEEL, impeller	10	223 030 H1	HOUSING, converter
2	879 198 C1	WHEEL, turbine	11	4 452 D	BEARING, ball (11)

DRIVE TRAIN

REF. NO.	PART NUMBER	DESCRIPTION	REF. NO.	PART NUMBER	DESCRIPTION
TORQUE CONVERTER – Continued					
12	223 040 H1	BODY, converter regulator valve (A and B)	22	933 786 C1	"O" RING (Used w/PLATE, 933 785 C1) (B and C)
12	1 110 360 C1	BODY, converter regulator valve (C)	23	336 573 R1	PISTON, regulator valve
13	223 039 H1	BODY, high pressure regulator valve	24		PUMP, charging (Refer to CHARGING PUMP)
14	888 577 C1	CARRIER, guide (With 6 tapped mounting holes w/o piston ring groove) (Order BUSHING, 933 7S1 C1, CARRIER, 933 782 C1 and RING, 934 207 C1) (A)		24 840 R1	BOLT (2)
14	933 782 C1	CARRIER, guide (With 8 tapped mounting holes w/piston ring groove) (B and C)	24A	347 624 R1	GASKET, pump flange
	21 318 R1	BOLT (8)	25	223 023 H1	PISTON, regulator
	321 608 R1	WASHER, copper (8)	26	888 578 C1	PLATE, steering pump mounting (Without O-RING groove) (Order "O" RING, 22 285 R1 "O" RING, 933 786 C1 and PLATE, 933 785 C1) (A)
14A	223 020 H1	SLEEVE, split	26	933 785 C1	PLATE, steering pump mounting (With O-RING groove) (B and C)
14B	222 679 H1	PLATE, clamp (2)		200 756 H1	BOLT (4)
	222 682 H1	SCREW, guide wheel to carrier 12 pt. (6)	27	223 021 H1	RETAINER, bearing (3)
14C	19 835 R1	PIN, guide wheel roll (4)	28	223 041 H1	BOLT, 3/8-16 x 2-3/4" 12 pt. (6)
14D	200 720 H1	PIN, guide wheel roll (4)	29	200 721 H1	SEAL, oil
15	223 035 H1	GEAR, "C" pump driven (48T., 8P) (2)	30	927 287 C1	BOLT, hex hd cap (3)
16	223 034 H1	GEAR, "A" pump driven (40T., 8P)	31	927 285 C1	SPRING, outer (250 psi)
17	1 110 359 C1	GASKET, converter regulator valve body (Replaces 223 032 H1) (A and B)	32	223 046 H1	SPRING, inner (250 psi)
17	1 110 359 C1	GASKET (C)	33	927 544 C1	SPRING, outer (converter regulator) (A and B) (Order SPRING, 939 082 C1 and SPRING, 939 083 C1)
18	223 031 H1	GASKET, high pressure regulator flat		33 1 110 362 C1	SPRING, compression (C)
19	223 029 H1	HUB, "A" pump splined	33	939 082 C1	SPRING, outer (converter regulator) (A and B)
20	223 026 H2	HUB w/PLUG, 172 570, splined (Assembly A) (Order the following – 1 HUB 630 220 C1 1 "O" RING 22 285 R1 1 "O" RING 933 786 C1 1 PLATE 933 785 C1)	34	223 042 H1	SEAL, oil (Assembly A) (Order "O" RING, 933 786 C1 "O" RING, 22 285 R1 and PLATE, 933 785 C1)
20	630 220 C1	HUB, splined (Assembly B and C)	35	606 304 C1	"O" RING
20A	223 026 H2	HUB w/PLUG, 172 570, splined (Assembly A) (Order the following – 1 CARRIER 933 783 C1 1 HUB 630 220 C1 1 "O" RING 933 786 C1 1 "O" RING 22 285 R1)	36	927 323 C91	BEARING w/SNAP RING, ball
20A	630 220 C1	HUB, splined (Assembly B and C)	37	927 322 C91	BEARING, ball
21	172 570	PLUG, expansion (Assembly A) (2)	38	336 588 R1	"O" RING
22	882 515 C1	GASKET, flat (Used w/PLATE, 888 578 C1) (A)	39	927 286 C1	SHAFT, output (With two tapped holes on yoke end and one on turbine end) (Order BOLT, 181 433, RETAINER, 882 437 C1 and SHAFT, 933 787 C1) (A)
			39	933 787 C1	SHAFT, output (With one tapped hole on both ends) (B and C)

DRIVE TRAIN

REF. NO.	PART NUMBER	DESCRIPTION	REF. NO.	PART NUMBER	DESCRIPTION
TORQUE CONVERTER - Continued					
40	181 360	BOLT, yoke retainer (Used w/SHAFT, 927 286 C1) (2) (A)	59	934 207 C1	RING, piston (Used w/CARRIER, 933 782 C1)
40	181 433	BOLT, yoke retainer (Used w/SHAFT, 933 787 C1) (B and C)	60	1 110 361 C1	ROLLER, freewheel (C)
41	200 724 H1	RETAINER, yoke (Used w/SHAFT, 927 286 C1) (A).	61	1 111 476 C91	VALVE, regulator (C)
				185 192 H1	SCREW, nameplate mounting drive (4)
				22 285 R1	"O" RING, pump mounting seal (Not part of TORQUE CONVERTER ASSEMBLIES) (Listed and illustrated w/LOADER PUMP and STEERING DIVERter PUMP) (2)
41	882 437 C1	RETAINER, yoke (Used w/SHAFT, 933 787 C1) (B and C)			
42	888 580 C1	YOKE, output			
43	336 572 R1	PLUG, relief valve (2)			
44	336 579 R1	WASHER, copper (2)			
45	336 589 R1	RING, internal snap			
46	336 593 R1	RING, output shaft piston (2)			
47	882 437 C1	RETAINER, bearing			
48	18 556 R1	PIN, roll			
49	222 681 H1	RING, turbine wheel external snap			
50	336 591 R1	RING, internal snap (3)			
51	336 590 R1	RING, internal snap (3)			
52	223 037 H1	FITTING, connector			
53	181 433	BOLT, 1/2NF x 1-3/4" (2)			
54	223 033 H1	GASKET, flat (Used w/CARRIER, 879 199 C1) (A)			
54	933 786 C1	"O" RING (Used w/CARRIER, 933 783 C1) (B and C)			
55	879 199 C1	CARRIER, loader pump oil seal (Without O-RING groove) (Order CARRIER, 933 783 C1 "O" RING, 22 285 R1 and "O" RING, 933 786 C1) (A)			
55	933 783 C1	CARRIER, loader pump oil seal (With O-RING groove) (B and C)			
56	222 158 H1	RING, converter to flywheel-seal (Not part of Converter Assembly)			
57	939 083 C1	SPRING, outer (converter regulator) (A and B)			
58	223 042 H1	SEAL, oil (Assembly A) (Order "O" RING, 22 285 R1 "O" RING, 933 786 C1 and CARRIER, 933 783 C1)			