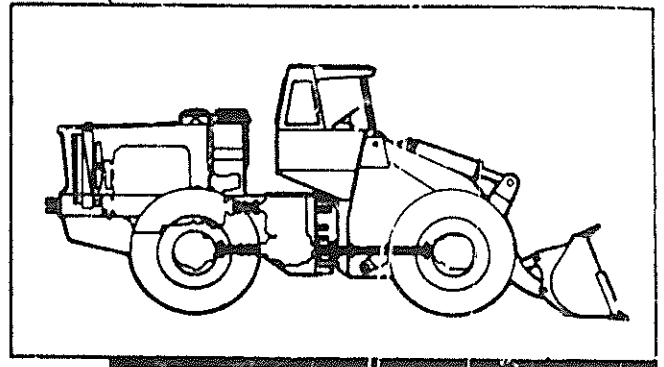


# SECTION 5

# DRIVE SHAFT



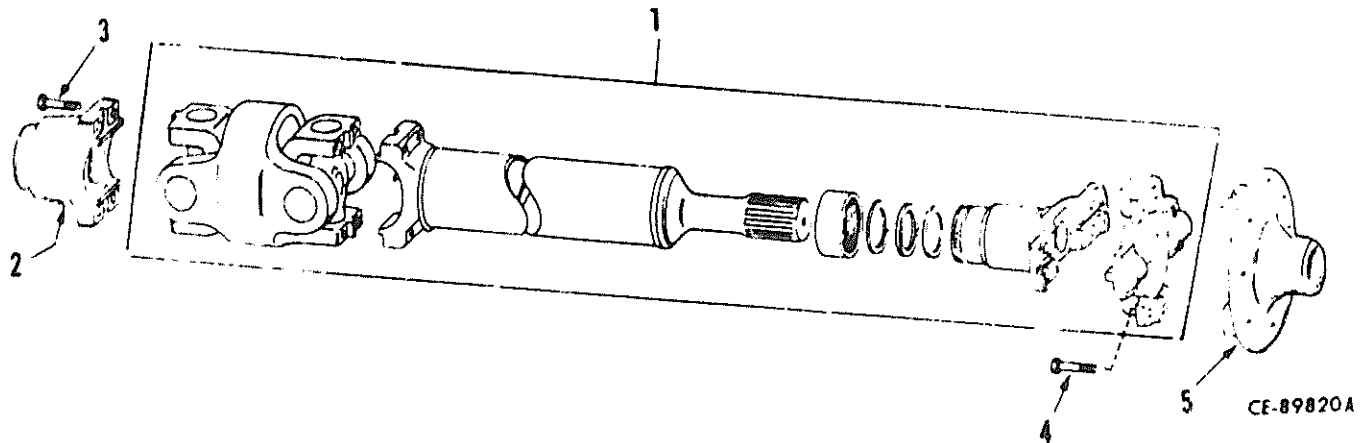
## Table Of Contents

Group	Page
DRIVE SHAFT (LOWER FRONT)	5-2 1-E2
DRIVE SHAFT (LOWER REAR)	5-3 1-E3
DRIVE SHAFT (UPPER REAR)	5-4 1-E4
DRIVE SHAFT (Transmission to Hanger Bearing)	5-5 1-E5
DRIVE SHAFT (Hanger Bearing to Front Axle)	5-6 1-E6

# DRIVE SHAFT

REF. NO.	PART NUMBER	DESCRIPTION	REF. NO.	PART NUMBER	DESCRIPTION
----------	-------------	-------------	----------	-------------	-------------

## DRIVE SHAFT (Lower Front)



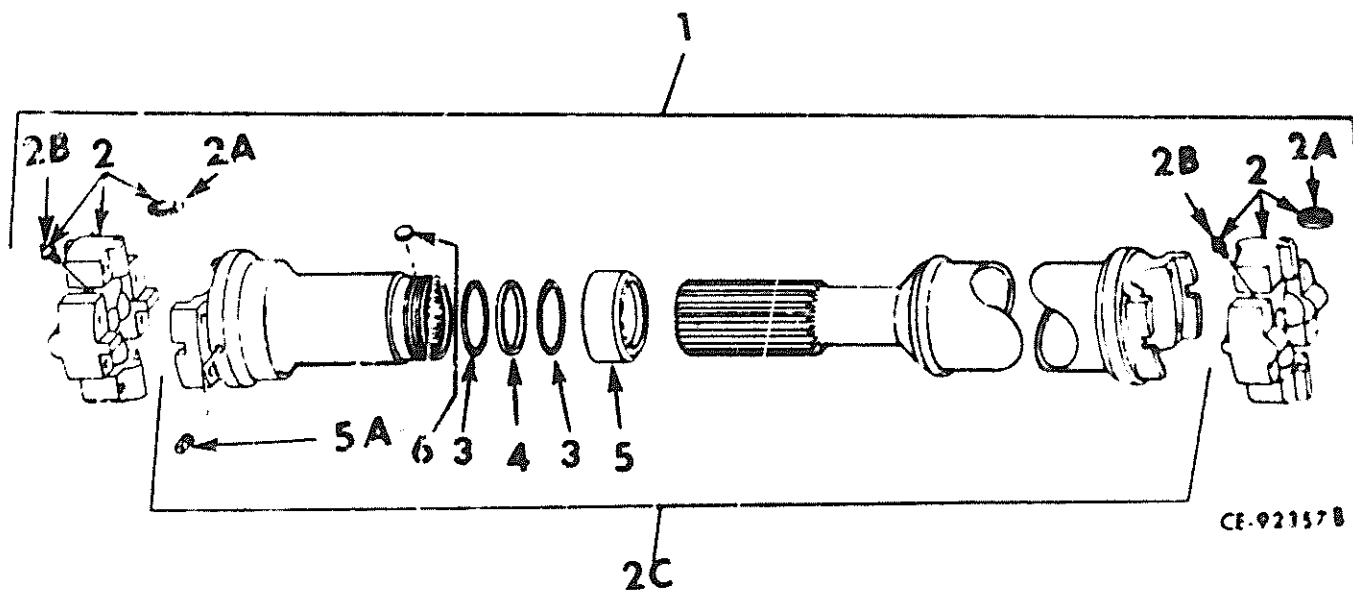
1	879 425 C91	SHAFT, drive U002258 and below C00* and below (Order KIT, DRIVE SHAFT IMPROVEMENT, 929 368 C91)	929 368 C91	KIT, drive shaft improvement U002258 and below C00* and below	(Consists of -
					§ 2 BAR
					1 BEARING 928 310 C91
					4 BOLT, 9/16" NC x 2-1/4" 179 911
					12 BOLT, 3/8" NF x 1-11/16" 120 001 H1
					1 DRAWING, frame modification FGH 13841
					1 DRAWING, drive shaft installation FGH-13840
					1 DRIVE SHAFT 927 653 C91
					1 DRIVE SHAFT 927 654 C91
					2 ELBOW, 45° 9 410 256
					1 NUT, Esna 215 617 R1
					4 NUT, Esna 19 798 R1
					1 "O" RING 702 283 R1
					4 "O" RING 364 885 R1
					§ 1 PLATE
					1 SEAL 880 605 C91
					1 WASHER 119 493 H1
					1 YOKE 927 655 C1
					1 YOKE 882 048 C1)

§ - Not Furnished Separately.

DRIVE SHAFT

REF. NO.	PART NUMBER	DESCRIPTION	REF. NO.	PART NUMBER	DESCRIPTION
----------	-------------	-------------	----------	-------------	-------------

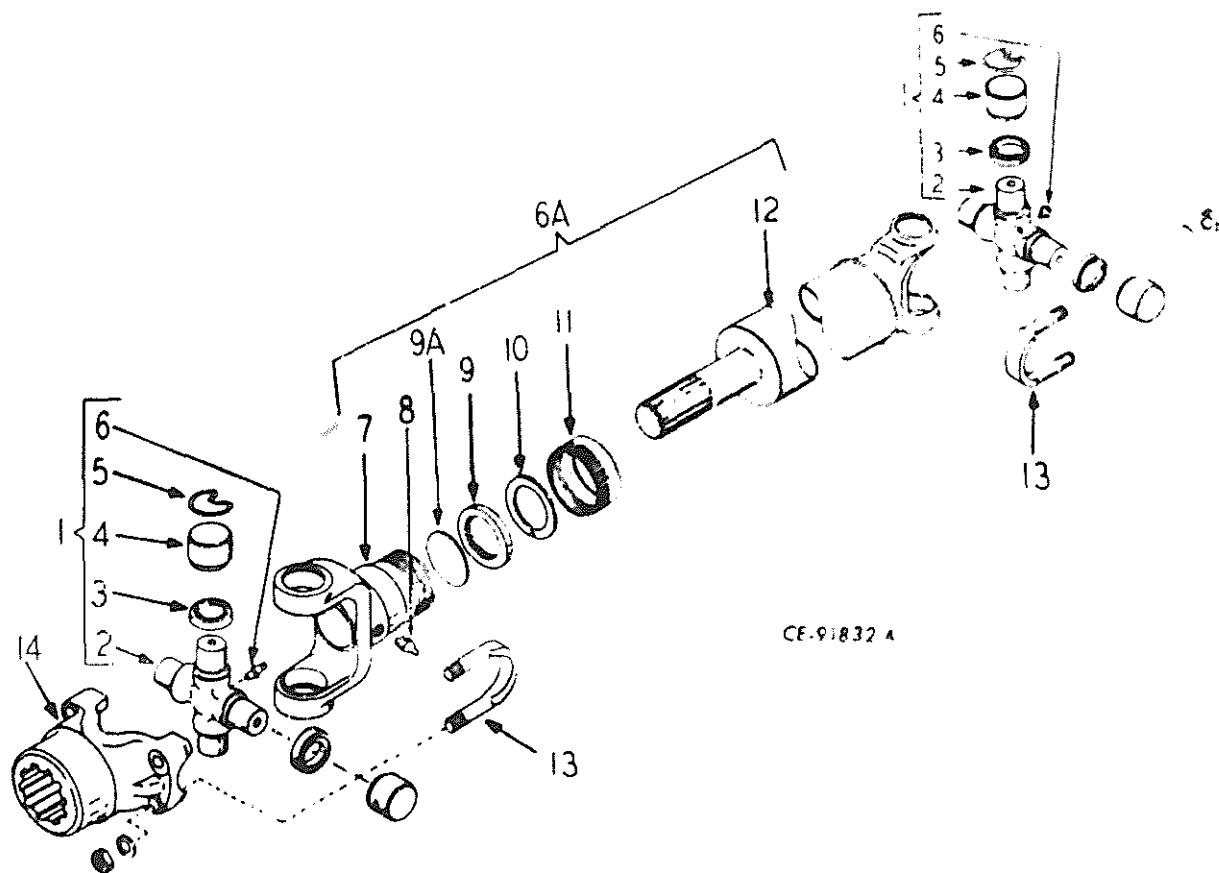
DRIVE SHAFT  
(Lower Rear)



1	879 422 C91	DRIVE SHAFT ASSEMBLY	3	22 251 V	WASHER, felt retainer (2)
	279 555 R1	BOLT, 3/8"NF x 2-1/4" (4)	4	114 816 H1	WASHER, felt
	120 001 H1	BOLT, special (4)	5	114 817 H1	RETAINER, felt
	18 602 R1	NUT, 3/8"NF Esna (4)	5A	109 461	FITTING, grease
2	881 908 C91	SPIDER and BEARING w/FITTING, 19 619 R1 and four SEAL, 305 109 R91 ( )	6		NOT USED
	135 755 H1	BOLT, special (8)			
	21 119 R1	NUT, 3/8"-.24 NF Esna (8)			
2A	305 109 P91	SEAL (8)			
2B	19 619 R91	FITTING, grease (8)			
2C		YOKE and TUBE ASSEMBLY (Not furnished separately)			

REF. NO.	PART NUMBER	DESCRIPTION	REF. NO.	PART NUMBER	DESCRIPTION
----------	-------------	-------------	----------	-------------	-------------

DRIVE SHAFT  
(Upper Rear)



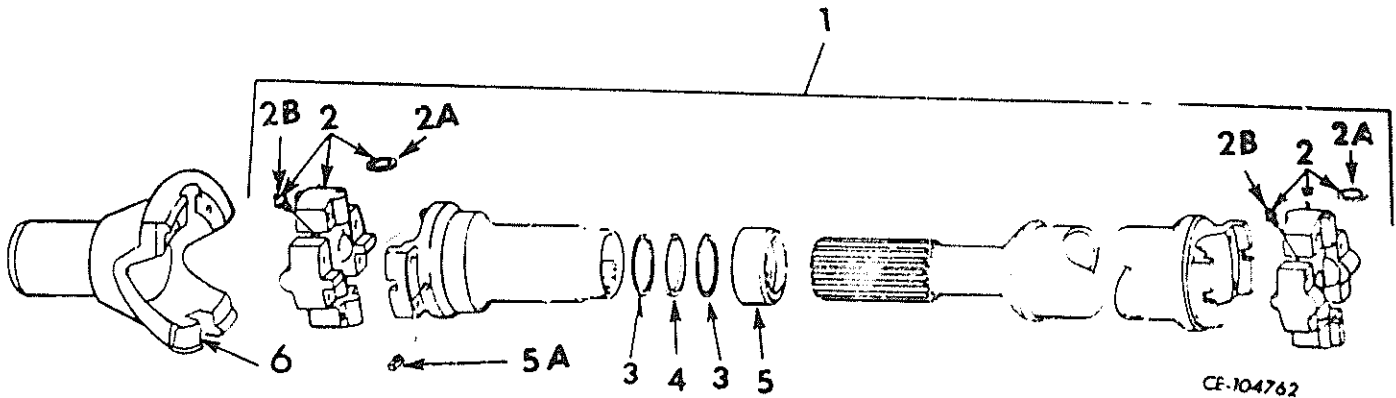
CE-91832 A

	879 423 C91	DRIVE SHAFT ASSY. (I.H. Engine) (Consists of the following parts except Ref. Nos. 13 and 14)	6A		SLEEVE YOKE and SHAFT ASSY (Not furnished separately)
	204 309 H1	DRIVE SHAFT ASSY. (Cummins Engine) (Consists of the following parts except Ref. Nos. 13 and 14)	7		YOKE, sleeve (Not furnished separately)
1	127 573 R91	KIT, journal and bearing (2)	8	109 454	FITTING, grease
2		CROSS, journal (Order JOURNAL and BEARING KIT, 127 573 R91) (2)	9	645 147 R1	WASHER, cork
3	127 556 R91	GASKET (8)	9A	645 144 R1	PLUG, sleeve yoke
4		BEARING (Order JOURNAL and BEARING KIT, 127 573 R91) (8)	10	154 085 H1	WASHER, steel
5	645 141 R1	RING, snap (8)	11	154 084 H1	CUP, dust
6	109 454	FITTING, grease (2)	12		SHAFT (Not furnished separately)
			13	645 151 R1 17 234 R1	"U" BOLT (4) NUT, 3/8" NF hex (8)
			14	151 797 H1	YOKE, shaft to transmission

# DRIVE SHAFT

REF. NO.	PART NUMBER	DESCRIPTION	REF. NO.	PART NUMBER	DESCRIPTION
----------	-------------	-------------	----------	-------------	-------------

**DRIVE SHAFT**  
(Transmission to Hanger Bearing)



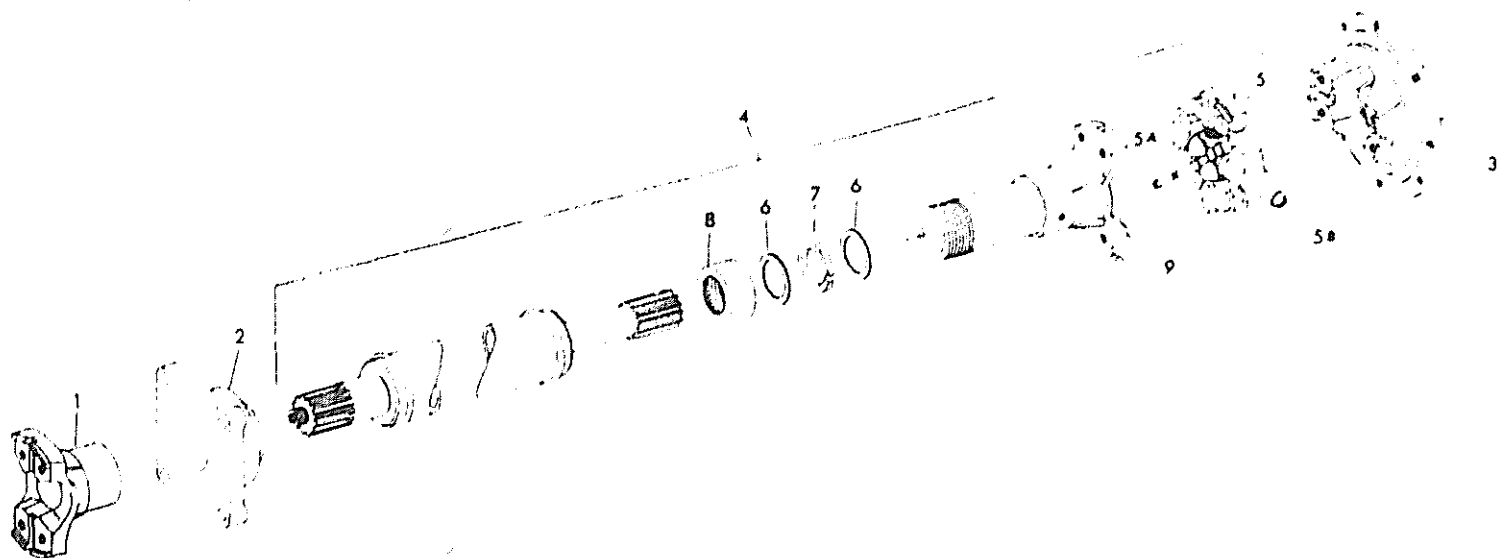
1	927 653 C91	DRIVE SHAFT ASSEMBLY U002259 and up C00* and up	2B	19 619 R91	FITTING, grease (8)
	120 001 H1	BOLT (4)	3	929 526 C1	WASHER (2)
2	881 908 C91	SPIDER and BEARING w/FITTING, 19 619 R1 and four SEAL, 305 109 R91 (2)	4	929 525 C1	SEAL, felt
	120 001 H1	BOLT (4)	5	31 437 V	CAP, stuffing
2A	305 109 R91	SEAL (8)	5A	109 461	FITTING, grease
			6		YOKE (See Transmission in Section 4)

\* - Serial Number not available.

## DRIVE SHAFT

REF. NO.	PART NUMBER	DESCRIPTION	REF. NO.	PART NUMBER	DESCRIPTION
----------	-------------	-------------	----------	-------------	-------------

**DRIVE SHAFT and HANGER BEARING**  
(Hanger Bearing to Front Axle)



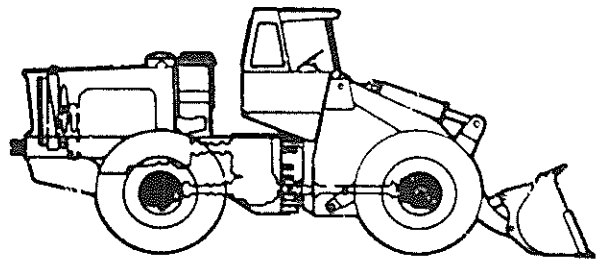
CE-104789

1	927 655 C1 119 493 H1 215 017 H1	YOKE (Not part of Drive Shaft Assembly) WASHER, yoke NUT, locking	5B	305 109 R91	SEAL (4)
2	928 810 C1 179 911 19 798 R1	BEARING (Not part of Drive Shaft Assembly) BOLT (4) NUT, esna (4)	6	22 251 V	WASHER (2)
3		YOKE, front differential (See Solid Axle in Section 6)	7	37 348 H	SEAL, felt
4	927 654 C91	DRIVE SHAFT ASSEMBLY U002259 and up C00* and up	8	22 259 V	CAP, stuffing
5	881 908 C91 120 001 H1	SPIDER and BEARING w/FITTING, 19 619 R91 and four SEAL, 305 109 R91 BOLT (8)	9	109 461	FITTING, grease
5A	19 619 R91	FITTING, grease			

\* - Serial Number not available.

# SECTION 6

# SOLID AXLE



## Table Of Contents

Group	Page
AXLE ASSEMBLY (Front & Rear).....	6 2 1-E9
WHEEL & MOUNTING .....	6 4 1-E11
AXLE SHAFT & HUB .....	6 7 1-E13
DIFFERENTIAL, FRONT .....	6 11 1-E16
DIFFERENTIAL, REAR .....	6 15 1-E19
<b>BRAKE GROUP</b> (Used on Axle Assembly, 878 607 C92, 890 623 C92, 878 613 C92 also 890 624 C92 and earlier) .....	6 17 1-E21
(Used on Axle Assembly, 878 607 C93, 890 623 C93, 878 613 C93 also 890 624 C93 and later) .....	6 19 1-E23

\* - Serial number not available.

(Rev. No. 3 5-72)

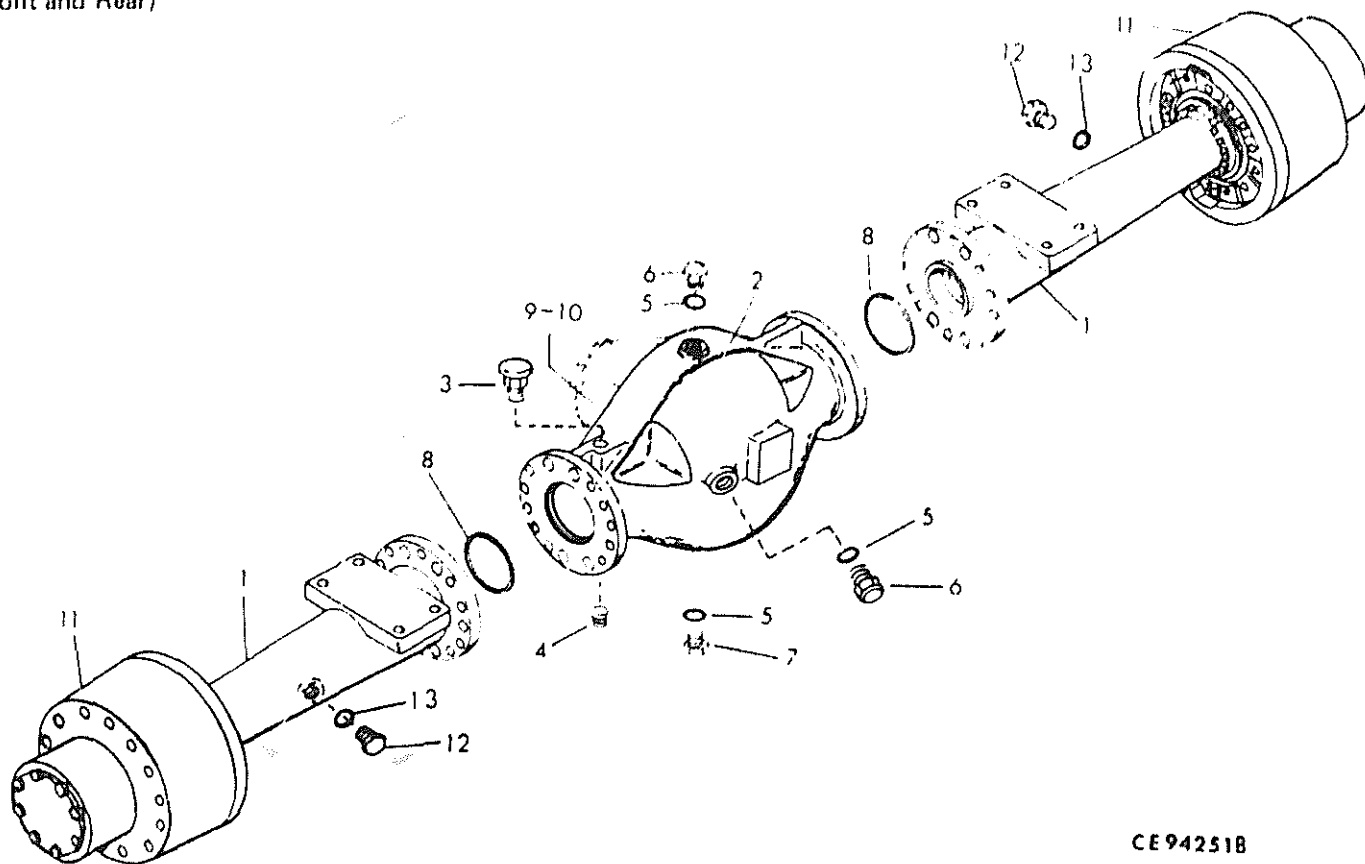
PRINTED IN UNITED STATES OF AMERICA

6-1

SOLID AXLE

REF. NO.	PART NUMBER	DESCRIPTION	REF. NO.	PART NUMBER	DESCRIPTION
----------	-------------	-------------	----------	-------------	-------------

AXLE ASSEMBLY  
(Front and Rear)



CE942518

878 607 C93	FRONT AXLE ASSEMBLY (No longer available for service. Service parts will be furnished) C001388 and below U001376 and below	1	921 763 C3	HOUSING, axle (Used on AXLE ASSEMBLY, 878 607 C93, 890 623 C93, 878 613 C93, 890 624 C93, 890 623 C94 and 890 624 C94 only) (2)
890 623 C94	FRONT AXLE ASSEMBLY C001389 and up U001377 and up		181 441	SCREW, 1/2" dia. hex-hd cap (24)
			271 590	SCREW, 5/8" dia. hex-hd cap (4)
			18 452 R1	LOCKNUT, 1/2" dia. (24)
			18 453 h1	LOCKNUT, 5/8" dia. (4)
878 613 C94	REAR AXLE ASSEMBLY (No longer available for service. Service parts will be furnished) C001388 and below U001376 and below	2	880 594 C2	BOWL, axle (Order the following - 1 BOWL 930 525 C1 1 BREATHER 91 916 R91 1 PLUG 444 660 )
890 624 C94	REAR AXLE ASSEMBLY C001389 and up U001377 and up	2	930 525 C2	BOWL, axle
21 197 R1	SCREW, hex-hd cap (8)	3	91 916 R91	BREATHER (Used w/BOWL, 930 525 C1 only)
18 595 R1	LOCKNUT (8) (Consists of the following parts -	4	444 660	PLUG (Used w/BOWL, 930 525 C1 only)
1	212 615 H3			HOUSING, axle (Used on AXLE ASSEMBLY, 878 607 C92, 890 623 C92, 878 613 C92, 890 624 C92 and earlier only) (2)



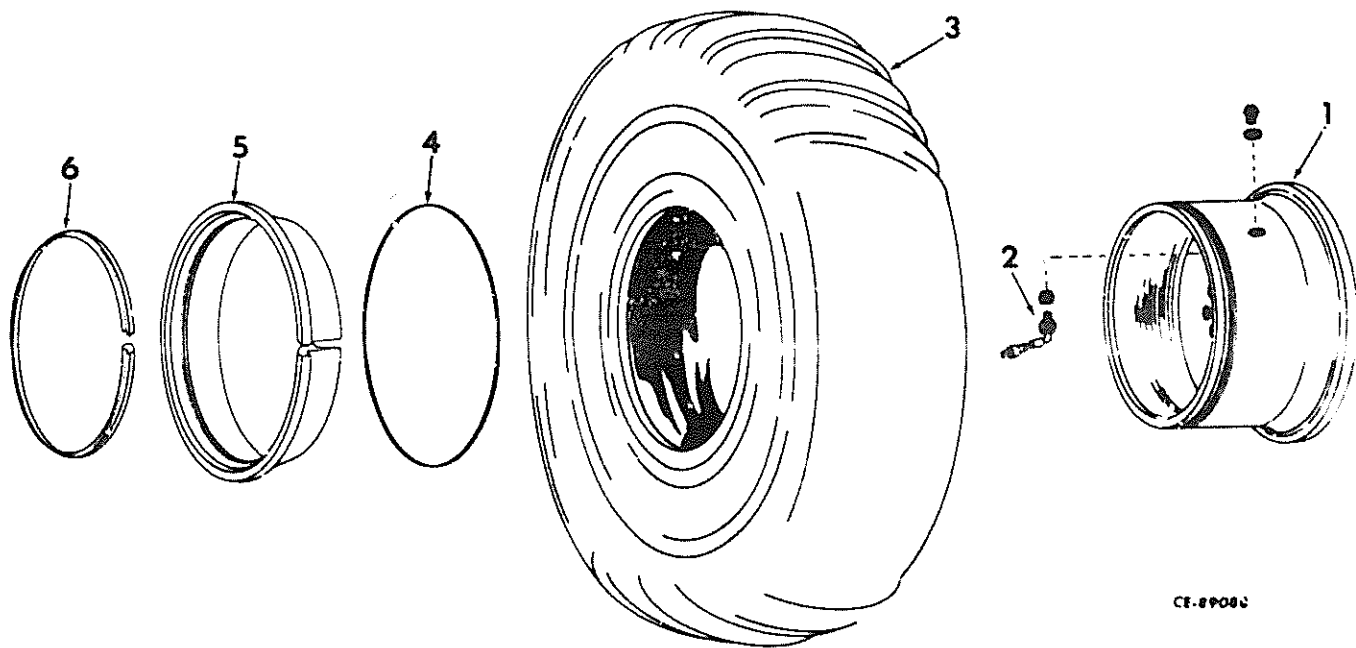
## SOLID AXLE

REF. NO.	PART NUMBER	DESCRIPTION	REF. NO.	PART NUMBER	DESCRIPTION
<b>AXLE ASSEMBLY - Continued</b> (Front and Rear)					
5	368 269 R1	"O" RING (Replaces, 570 828 R1) (Used w/BOWL, 930 525 C1) (3) (Used w/BOWL, 880 594 C2) (2)			
6	9 410 361	PLUG (Replaces, 9 410 359) (Used w/BOWL, 930 525 C1) (2) (Used w/BOWL, 880 594 C2) (1)			
7	190 302 H1	PLUG, magnetic			
8	355 740 R1	"O" RING (2)			
9		DIFFERENTIAL (Refer to "Front Differential or Rear Differential" in this section)			
10		GASKET, differential to axle bowl (Order GASKET, 347 383 R91)			
11		PLANETARY CARRIER and GEAR ASSEMBLY (Refer to "Axle Shaft and Hub" in this section) (2)			
12	9 410 361	PLUG (2)			
13	368 269 R1	"O" RING (2)			
	924 986 C93	HOUSING and NUT ASSEMBLY (Consists of HOUSING, 921 763 C2 and NUT, 157 060 H2) (Used on AXLE ASSY., 878 607 C93, 890 623 C93, 878 613 C93, 890 624 C93, 890 623 C94 and 890 624 C94 only) (2)			
	157 060 H2	NUT (Illustrated with "Axle Shaft and Hub - Front and Rear" in this section) (2)			
	347 383 R91	GASKET, liquid (16 oz )			

# SOLID AXLE

REF. NO.	PART NUMBER	DESCRIPTION	REF. NO.	PART NUMBER	DESCRIPTION
----------	-------------	-------------	----------	-------------	-------------

## WHEEL AND MOUNTING

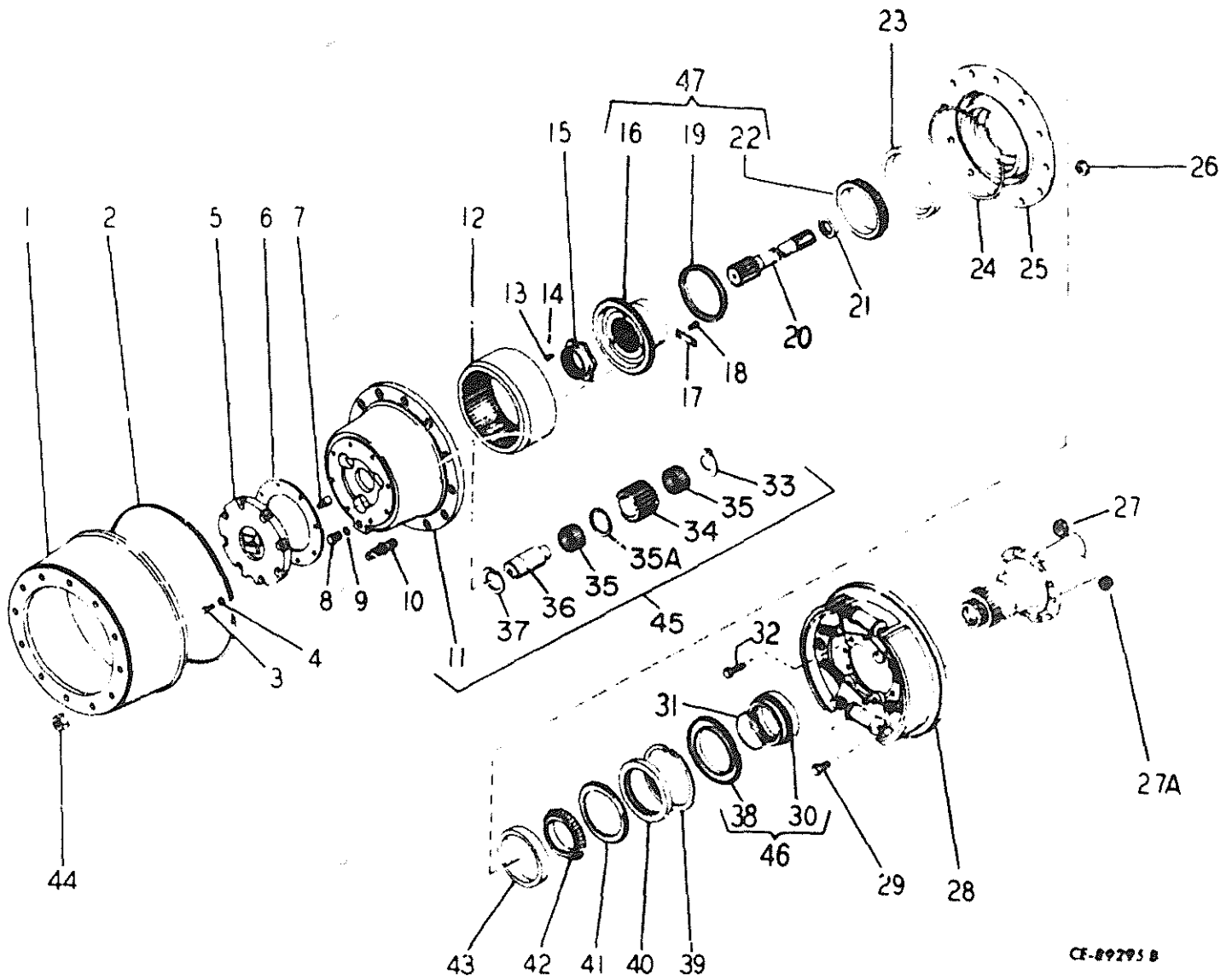


Parts without letters after the description indicates the part is used for all Wheels listed below. Letters "A", "B" and "C" are used to identify separate Wheels.

			3		TIRE (Purchase locally)
			4	138 548 H1	"O" RING (Wheel A)
			4	145 395 H1	"O" RING (Wheel B and C)
			5	138 546 H1	FLANGE (Wheel A)
A		Service part for WHEEL, 879 050 C2, 14.00 x 24 tire, 16.00 x 24 tire and 12.00 x 24 laminated tire (Optional)	5	195 703 H1	FLANGE (Wheel B)
			5	302 538 R1	FLANGE (Wheel C)
			6	138 547 H1	RING, lock (Wheel A)
			6	195 702 H1	RING, lock (Wheel B)
B		Service part for WHEEL, 928 788 C1 (15.50 x 25 tire) (Standard)	6	145 394 H1	RING, lock (Wheel C)
C		Service part for WHEEL, 879 931 C2 (17.50 x 25 tire) (Optional)			
	1	879 050 C2	WHEEL		(Wheel A)
	1	928 788 C1	WHEEL		(Wheel B)
	1	879 931 C2	WHEEL		(Wheel C)
	2	155 150 H2	VALVE		(Wheel A)
	2	145 392 H1	VALVE		(Wheel B)
	2	613 807 C91	VALVE		(Wheel C)

# SOLID AXLE

## AXLE SHAFT AND HUB (Front and Rear)



CE-89295 B

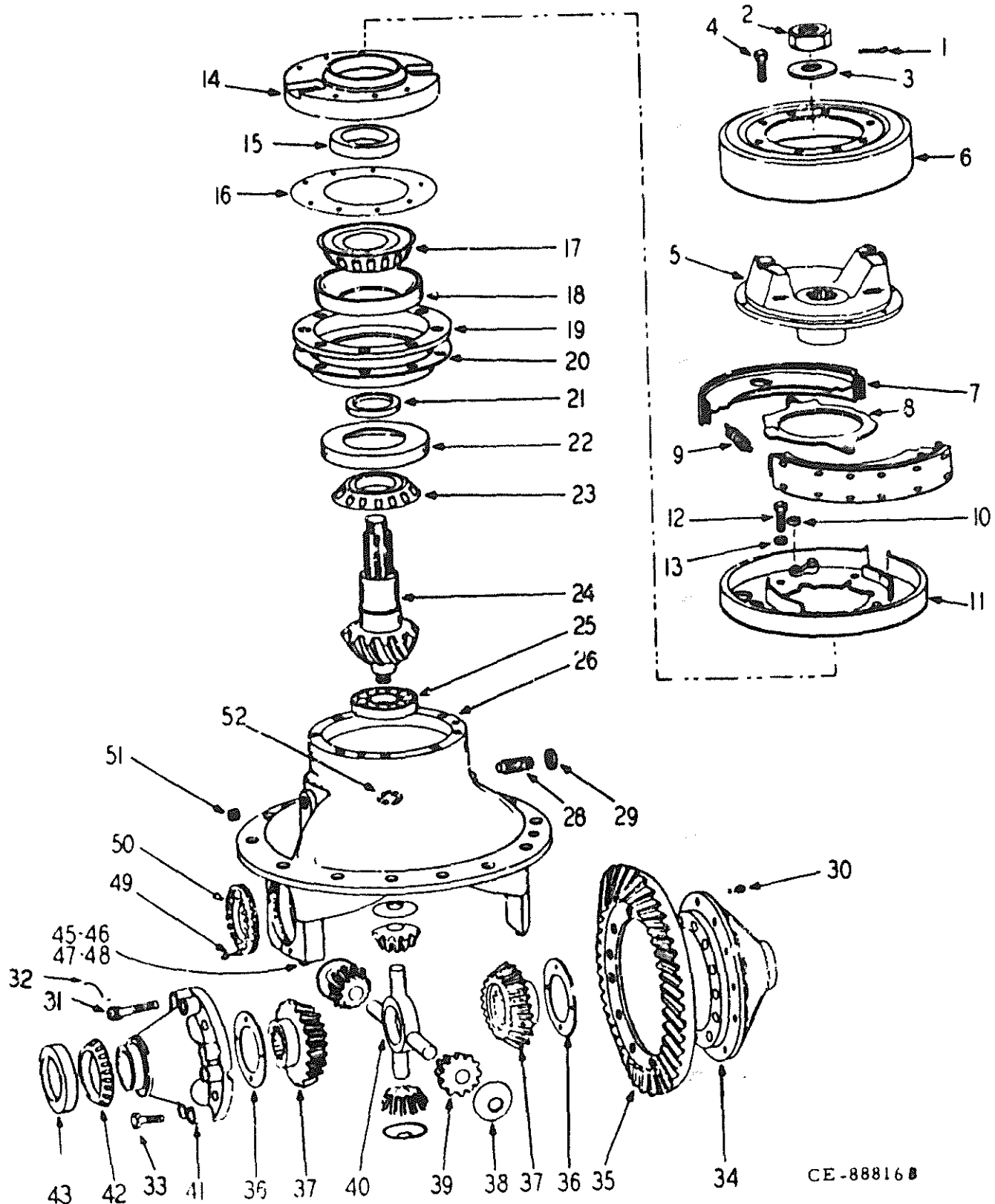
REF. NO.	PART NUMBER	DESCRIPTION	REF. NO.	PART NUMBER	DESCRIPTION
AXLE SHAFT AND HUB - Continued (Front and Rear)					
		PLANETARY ASSY. (4) (Consists of the following parts -	21	161 919 H2	SEAL, oil (For units so equipped)
1	878 606 C1	DRUM, brake (Used on AXLE ASSY., 878 607 C92, 890 623 C92, 878 613 C92, also 890 624 C92 and earlier)	22	613 632 C91	CONE, roller bearing
1	921 746 C2	DRUM, brake (Used on AXLE ASSY., 878 607 C93, 890 623 C93, 878 613 C93, also 890 624 C93 and later)	23	272 120 R1	CUP, bearing
2	157 124 H1	SEAL, brake (For units so equipped)	24	22 425 R1	"O" RING
3	24 840 R1	BOLT, sealant type (8)	25	157 068 H1	HUB
4		WASHER, sealing (For units so equipped) (8) (Order BOLT, 24 840 R1)	26	101 735 H1	NUT (12)
5	157 043 H1	COVER (Order COVER, 885 631 C2)	27	18 452 R1	NUT, 1/2"NF F <sub>sna</sub> (Used on AXLE ASSEMBLY, 878 607 C92, 890 623 C92, 878 613 C92 also 890 624 C92 and earlier) (4)
5	885 631 C2	COVER (Used on AXLE ASSY., 878 607 C93, 890 623 C93, 878 613 C93, 890 624 C93 and earlier only)	27	21 384 R1	NUT, 9/16"NF (Used on AXLE ASSEMBLY, 878 607 C93, 890 623 C93, 878 613 C93 also 890 624 C93 and later) (6)
5	929 474 C1	COVER (Used on AXLE ASSY., 890 623 C94 and 890 624 C94 only)	27A	452 489 R1	NUT, 7/16"NF E <sub>sna</sub> (Used on AXLE ASSEMBLY, 878 607 C92, 890 623 C92, 878 613 C92 also 890 624 C92 and earlier) (10)
6	157 044 H1	GASKET	27A	21 384 R1	NUT, 9/16"NF (Used on AXLE ASSEMBLY, 878 607 C93, 890 623 C93, 878 613 C93, also 890 624 C93 and later) (6)
7	157 045 H1	BUTTON, thrust (Use with COVER, 157 043 H1 only)	28		BRAKE ASSEMBLY (See "Brake Group" in this section)
8	190 302 H1	PLUG, magnetic	29	181 397	BOLT, 7/16"NF x 1-1/4" (Used on AXLE ASSEMBLY, 878 607 C92, 890 623 C92, 878 613 C92, also 890 624 C92 and earlier) (10)
9	570 828 R1	"O" RING	29	921 646 C1	BOLT, 9/16"NF x 2" rib neck (Used on AXLE ASSEMBLY, 890 623 C94, 890 623 C93, 890 624 C94 also 890 624 C93 and later) (C)
10	157 071 H2	STUD (12)	30	197 643 H3	RETAINER, seal
11	157 041 H3	CARRIER, planetary	31	259 246 R1	"O" RING
12	157 051 H1	GEAR, ring	32	193 048 H1	BOLT, shoulder (Used on AXLE ASSEMBLY, 878 607 C92, 890 623 C92, 878 613 C92, also 890 624 C92 and earlier)
13	157 061 H1	BOLT, hub	32	921 646 C1	BOLT, 9/16"NF x 2" rib neck (Used on AXLE ASSEMBLY, 878 607 C93, 890 623 C94, 878 613 C93, also 890 624 C94 and later)
14	107 761	PIN, 1/16" x 5/8" cotter	33	157 421 H2	WASHER, thrust (3)
15	157 060 H1	NUT (Also listed in the "AXLE ASSY., Front and Rear" in this section)	34	209 690 H3	PINION, planet (3)
16	157 053 H1	HUB	35	613 639 C91	BEARING (6)
17	157 054 H1	PLATE, lock (4)			
18	20 706 R1	BOLT (8)			
19	157 058 H1	SPACER			
20	173 423 H5	SHAFT, axle			

## SOLID AXLE

REF. NO.	PART NUMBER	DESCRIPTION	REF. NO.	PART NUMBER	DESCRIPTION
<b>AXLE SHAFT AND HUB - Continued</b> (Front and Rear)					
35A	209 692 H1	SPACER (3)			
36	209 693 H2	SHAFT, planet pinion (3)			
37	209 694 H1	WASHER, thrust (3)			
38	157 703 H1	SCAVENGER, oil			
39	157 080 H1	RING, retaining (Use only on units which have a retaining ring groove in HUB, 157 068 H1)			
40	157 078 H3	SEAL, oil			
41	157 079 H1	SPACER			
42	58 233 R91	BEARING, roller			
43	613 636 C1	CUP, bearing			
44	102 430 H1	NUT (12)			
45	209 689 H5	PLANETARY CARRIER and GEAR ASSEMBLY			
46	163 018 H3	RETAINER and SCAVENGER ASSY.			
47	163 020 H1	HUB ASSEMBLY			
	187 679 H1	HUB ASSEMBLY (Consists of -			
		1 BEARING		58 233 R91	
		1 CUP		272 120 R1	
		1 CUP		613 636 C1	
		1 HUB		157 068 H1	
		1 RING		157 080 H1	
		1 SEAL		157 078 H3	
		1 SPACER		157 079 H1	
	163 019 H1	HUB and CUP ASSEMBLY (Consists of CUP, 272 120 R1, CUP, 613 636 C1 and HUB, 157 068 H1)			

# SOLID AXLE

DIFFERENTIAL  
(Front)



CE-88816B

## SOLID AXLE

REF. NO.	PART NUMBER	DESCRIPTION	REF. NO.	PART NUMBER	DESCRIPTION
DIFFERENTIAL - Continued (Front)					
			20	174 815 H1	SHIM (.005") (Also part of IMPROVED PERFORMANCE REWORK KIT, 892 950 C91) (x)
878 615 C91		DIFFERENTIAL CARRIER ASSY. front (4.333:1 ratio) C001388 and below U001376 and below	21	174 831 H1	SPACER (.172") (x)
			21	174 832 H1	SPACER (.173") (x)
			21	174 833 H1	SPACER (.174") (x)
890 626 C91		DIFFERENTIAL CARRIER ASSY., front (3.70:1 ratio) C001389 and up U001377 and up	21	174 834 H1	SPACER (.175") (x)
			21	174 835 H1	SPACER (.176") (x)
			21	174 836 H1	SPACER (.177") (x)
24 850 R1		SCREW, 1-1/2" long sealant (8)	21	174 837 H1	SPACER (.183") (x)
24 851 R1		SCREW, 1-3/4" long sealant (4) (Consists of the following parts -	21	174 838 H1	SPACER (.189") (x)
			21	174 839 H1	SPACER (.195") (x)
			21	174 840 H1	SPACER (.201") (x)
1	103 388	PIN, cotter (Used w/NUT, 104 078 H1 only)	22	179 501 H1	CUP, bottom
2	104 078 H1	NUT (Order NUT, 447 873 C1)	23	179 503 H1	CONE, bottom
2	447 873 C1	NUT	24		PINION (Order GEAR and PINION SET, 174 828 H1) (Differential, 878 615 C91)
3	127 079 H1	WASHER			PINION (Order GEAR and PINION SET, 892 828 C1) (Differential, 890 626 C91)
4	353 330 R1	SCREW, 3/8" NC x 1-3/8" cap (2)	24		
4	354 922 R1	SCREW, 3/8" NC x 2" cap (6)			
5	883 905 C1	YOKE	25	137 130 H1	BEARING
6	921 592 C1	DRUM, brake	26		CARRIER, differential (Order DIFFERENTIAL CARRIER and CAP ASSEMBLY, 174 816 H1)
7	141 131 H1	SHOE w/LINING, 141 128 H1 and fourteen RIVET, 162 557 H1	28	882 034 C1	SCREW
8	141 127 H1	LEVER, cam operating	29	136 786 H1	NUT
9	141 130 H1	SPRING (2)	30	104 553 H1	RIVET, drive gear (12)
10	143 206 H1	ROLLER	31	174 825	BOLT, lockwire (Order eight BOLT, 24 854 R1, and eight WASHER, 213 319 R1)
11	883 907 C91	PLATE, backing	31	24 854 R1	BOLT (8)
12	279 953 R1	SCREW, 3/8" NF x 7/8" cap (8)		213 319 R1	WASHER (8)
13	290 609 R1	WASHER, flat (8)	32		WIRE, locking (16 ga. x 20" long) (Cut from bulk WIRE, 278 027 R1) (Used w/BOLT, 174 825 only) (x)
14	883 904 C1	COVER, 889 555 C1, w/SEAL, 174 834 H1	33		NOT USED IN THIS APPLICATION
15	174 843 H1	SEAL	34		CASE, flange half (Order DIFFERENTIAL CASE ASSY., 883 919 C1)
16	174 841 H1	GASKET (Also part of IMPROVED PERFORMANCE REWORK KIT, 892 950 C91)	35		GEAR (Order GEAR and PINION SET, 174 828 H1) (Differential 878 615 C91)
17	179 504 H1	CONE, top	35		GEAR (Order GEAR and PINION SET, 892 828 C1) (Differential 890 626 C91)
18	45 929 H1	CUP, top			
19	174 830 H1	CAGE w/CUP, 179 501 H1, and CUP, 179 502 H1			
20	174 814 H1	SHIM (.003") (Also part of IMPROVED PERFORMANCE REWORK KIT, 892 950 C91) (x)			

(x) - As Required.

## SOLID AXLE

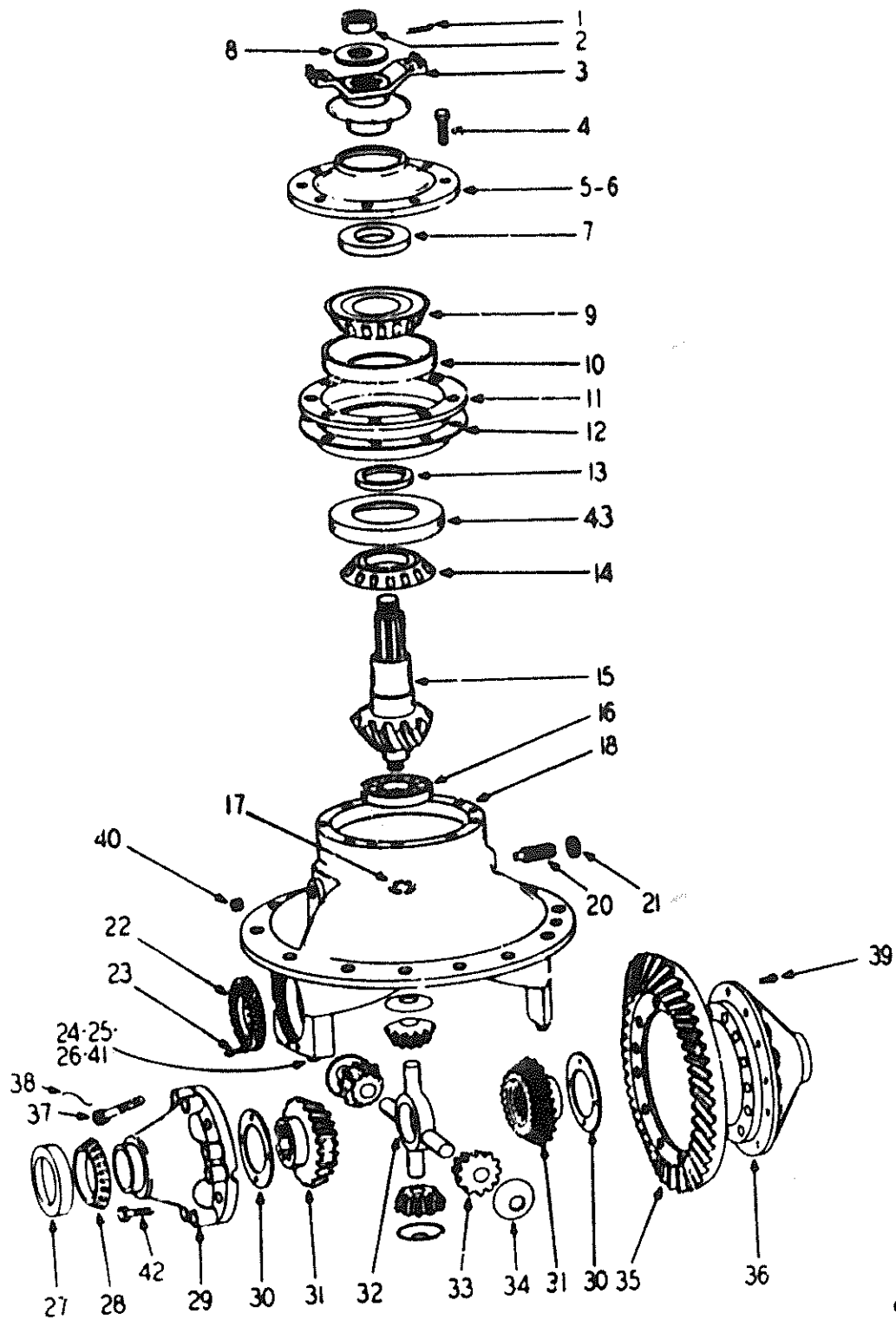
REF. NO.	PART NUMBER	DESCRIPTION	REF. NO.	PART NUMBER	DESCRIPTION
<b>DIFFERENTIAL - Continued (Front)</b>					
36	174 823 H1	WASHER, thrust (2)	174 819 H1	DIFFERENTIAL ASSEMBLY (Composed of -	
37	174 822 H1	GEAR, differential side (2)		1 ASSEMBLY	883 919 C1
38	174 821 H1	WASHER (4)		§ 2 CASE	
39	174 820 H1	PINION, differential (4)		2 GEAR	174 822 H1
40	174 824 H1	SPIDER		4 PINION	174 820 H1
41		CASE, plain half (Order DIFFERENTIAL CASE ASSEMBLY, 883 919 C1)		8 BOLT	24 854 R1
42	174 826 H1	BEARING (2)		1 SPIDER	174 824 H1
43	108 931 H1	CUP (2)		8 WASHER	213 319 R1
44		CAP (Order DIFFERENTIAL CARRIER and CAP ASSEMBLY, 174 816 H1) (2)	174 829 H1	4 WASHER	174 821 H1
45				2 WASHER	875 572 C1
46	73 311 R1	DOWEL (4)		(x) WIRE	278 027 R1)
47	174 817 H1	BOLT, lockwire (Order four BOLT, 26 568 R1) WIRE, locking (16 ga. x 18" long) (Cut from bulk WIRE, 278 027 R1) (Used w/BOLT, 174 817 H1 only) (x)	174 829 H1	BEARING CAGE ASSEMBLY (Composed of -	
48	164 846 H1	WASHER (4)		1 CAGE	174 830 H1
49	179 094 H1	PIN, cotter (4)		1 CONE	179 503 H1
50	174 813 H1	RING, adjust (2)		1 CONE	179 504 H1
51	1 103 032	PLUG, oil filler and level		(x) SPACER	174 831 H1)
52	875 571 C1	RING, lock	883 906 C91	BRAKE ASSEMBLY (Composed of -	
	141 128 H1	LINING (2)		1 DRUM	921 592 C1
	162 557 H1	RIVET (28)		1 LEVER	141 127 H1
	889 555 C1	COVER		1 PLATE	883 907 C91
	165 684 H1	REPAIR KIT, brake lining (Consists of two LINING, 141 128 H1 and twenty-eight RIVET, 162 557 H1)		1 ROLLER	143 206 H1
	174 816 H1	DIFFERENTIAL CARRIER and CAP ASSEMBLY (Composed of -		1 SHOE	141 131 H1
		§ 2 CAP	883 919 C1	2 SPRING	141 130 H1)
		§ 1 CARRIER		DIFFERENTIAL CASE ASSEMBLY (Consists of FLANGE HALF CASE and PLAIN HALF CASE)	
		4 DOWEL 73 311 R1	174 828 H2	GEAR & PINION SET (Differential 878 615 C91)	
		2 PIN 179 094 H1		892 828 C1 GEAR & PINION SET (Differential, 890 626 C91) (Also used on units equipped with IMPROVED PERFORMANCE REWORK KIT, 892 950 C91)	
		4 BOLT 26 568 R1		447 873 C1 NUT	
		4 WASHER 164 846 H1		278 027 R1 WIRE, bulk locking (16 ga.) 50-ft. (x)	
		(x) WIRE 27 802 R1)			

(x) - As Required.  
§ - Not Furnished Separately.



# SOLID AXLE

## DIFFERENTIAL (Rear)



Co-88817c

## SOLID AXLE

REF. NO.	PART NUMBER	DESCRIPTION	REF. NO.	PART NUMBER	DESCRIPTION
DIFFERENTIAL - Continued (Rear)					
	878 614 C91	DIFFERENTIAL CARRIER ASSY., rear (4.333:1 ratio) C001388 and below U001356 and below	15		PINION (Order GEAR and PINION SET, 892 828 C1) (Differential, 890 625 C91)
	890 625 C91	DIFFERENTIAL CARRIER ASSY., rear (3.70:1 ratio) C001389 and up U001377 and up	16	137 130 H1	BEARING
	70 427 R1	SCREW, 1-1/2" long sealant (8)	17	875 571 C1	RING, lock
	870 325 R1	SCREW, 1-3/4" long sealant (4) (Consists of the following parts -	18		CARRIER, differential (Order CARRIER and CAP ASSEMBLY, 174 816 H1)
1	103 388	PIN, cotter (Used w/NUT, 104 078 H1 only)	20	882 034 C1	SCREW, thrust
2	104 078 H1	NUT (Order NUT, 447 873 C1)	21	136 786 H1	NUT
2	447 873 C1	NUT	22	174 813 H1	RING, adjust (2)
3	397 547 R91	YOKE and DEFLECTOR	23	179 094 H1	PIN, cotter (4)
4	179 840	SCREW, 3/8"NC x 1-1/8" cap (8)	24		BEARING, cap (Order DIFFERENTIAL CARRIER and CAP ASSEMBLY, 174 816 H1) (2)
5	174 842 H1	COVER w/SEAL, 174 843 H1	25	73 711 R1	DOWEL (4)
6	174 841 H1	GASKET (Also part of IMPROVED PERFORMANCE REWORK KIT, 892 950 C91)	26	174 817 H1	BOLT (With hole in cap) (Order four BOLT, 26 568 R1) WIRE, locking (16 ga. x 18" long) (Cut from bulk WIRE, 278 027 R1) (Used only with BOLT, 174 817 H1) (x)
7	174 843 H1	SEAL	26	26 568 R1	BOLT (4)
8	127 079 H1	WASHER	27	108 931 H1	CUP (2)
9	179 504 H1	CONE, top	28	174 826 H1	BEARING (2)
10	45 929 H	CUP, top	29		CASE, plain half (Order DIFFERENTIAL CASE ASSEMBLY, 883 919 C1)
11	174 830 H1	CAGE w/CUP, 179 501 H1 and CUP, 179 502 H1	30	174 823 H1	WASHER, thrust (2)
12	174 814 H1	SHIM (.003") (Also part of IMPROVED PERFORMANCE REWORK KIT, 892 950 C91) (x)	31	174 822 H1	GEAR, differential side (2)
12	174 815 H1	SHIM (.005") (Also part of IMPROVED PERFORMANCE REWORK KIT, 892 950 C91) (x)	32	174 824 H1	SPIDER
13	174 831 H1	SPACER (.172") (x)	33	174 820 H1	PINION, differential (4)
13	174 832 H1	SPACER (.173") (x)	34	174 821 H1	WASHER (4)
13	174 833 H1	SPACER (.174") (x)	35		GEAR (Order GEAR and PINION SET, 174 828 H1) (Differential, 870 614 C91)
13	174 834 H1	SPACER (.175") (x)			
13	174 835 H1	SPACER (.176") (x)	35		GEAR (Order GEAR and PINION SET, 892 828 C1) (Differential, 890 625 C91)
13	174 836 H1	SPACER (.177") (x)			
13	174 837 H1	SPACER (.183") (x)			
13	174 838 H1	SPACER (.189") (x)			
13	174 839 H1	SPACER (.195") (x)			
13	174 840 H1	SPACER (.201") (x)			
14	179 503 H1	CONE, bottom			
15		Pinion (Order GEAR and PINION SET, 174 828 H1) (Differential, 878 614 C91)			

(x) - As Required.

## SOLID AXLE

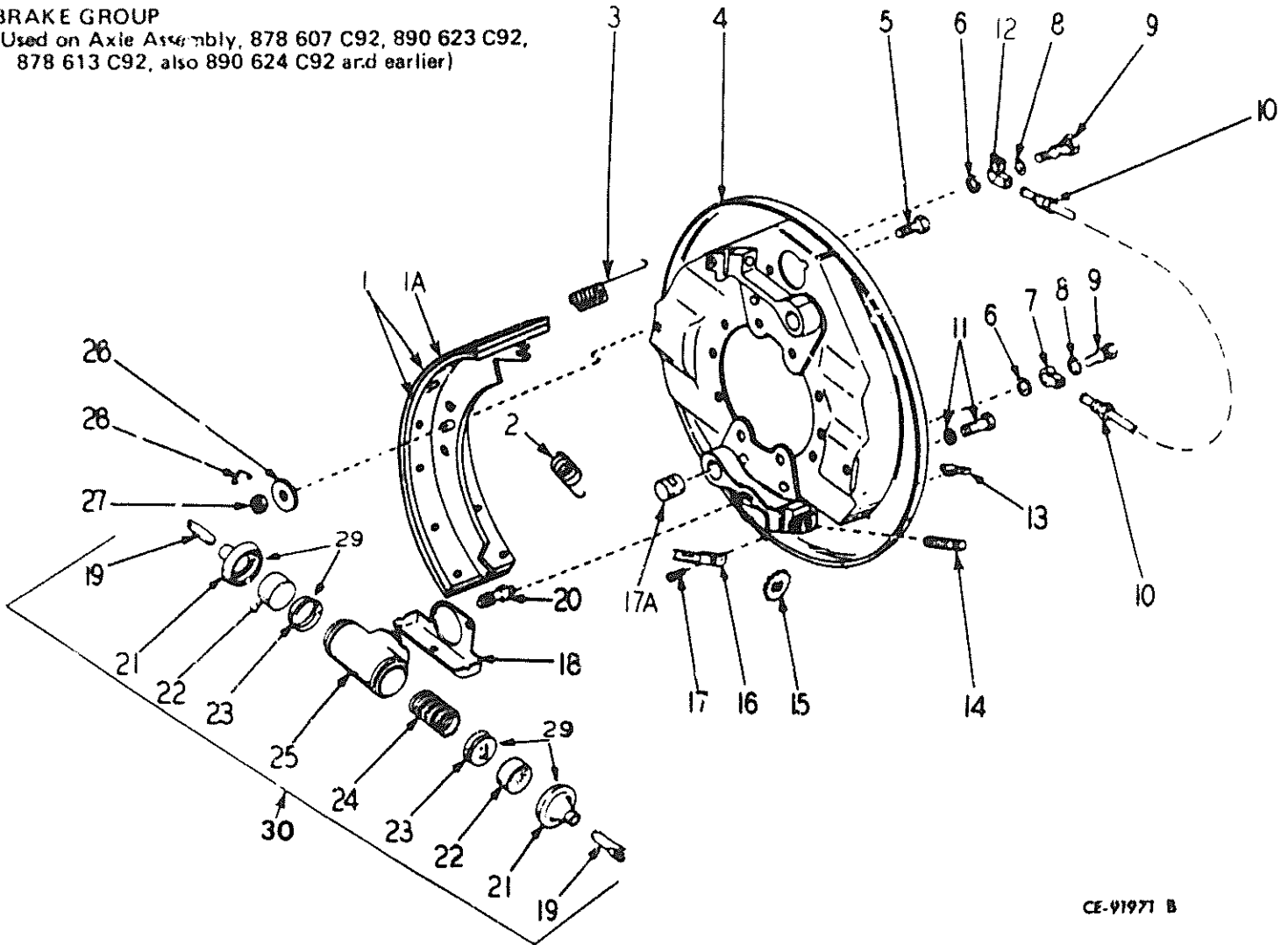
REF. NO.	PART NUMBER	DESCRIPTION	REF. NO.	PART NUMBER	DESCRIPTION
DIFFERENTIAL - Continued (Rear)					
36		CASE, flange half (Order DIFFERENTIAL CASE ASSEMBLY, 883 919 C1)	892 828 C1		GEAR and PINION SET (Differential 890 625 C91) (Also part of IMPROVED PERFORMANCE REWORK KIT, 892 950 C91)
			447 873 C1		NUT
37	174 825 H1	BOLT (With hole in cap) (Order eight BOLT, 24 854 R1, and eight WASHER, 213 319 R1)	883 910 C1		DIFFERENTIAL CASE ASSEMBLY (Consists of FLANGE HALF CASE and PLAIN HALF CASE)
37	24 854 R1 213 319 R1	BOLT (8) WASHER (8)			
38		WIRE, locking (16 ga. x 20" long) (Cut from bulk WIRE, 278 027 R1) (Used only w/BOLT, 174 825 H1) (x)			
39	104 553 H1	RIVET, drive gear (12)			
40	9 409 949	PLUG, oil filler and level			
41	164 846 H1	WASHER (4)			
42		NOT USED			
43	179 501 H1	CUP, bottom			
	174 816 H1	DIFFERENTIAL CARRIER and CAP ASSEMBLY (Composed of - § 2 CAP § 1 CARRIER 4 DOWEL 73 311 R1 2 PIN 179 094 H1 4 SCREW 174 817 H1 4 WASHER 164 846 H1)			
	278 027 R1	WIRE, bulk locking (16 ga.) (50-ft.) (x)			
	174 819 H1	DIFFERENTIAL ASSEMBLY (Composed of - 1 ASSEMBLY 883 919 C1 § 2 CASE 2 GEAR 174 822 H1 4 PINION 174 820 H1 8 BOLT 24 854 R1 1 SPIDER 174 824 H1 8 WASHER 213 319 R1 4 WASHER 174 821 H1 2 WASHER 875 572 C1 (x) WIRE 278 027 R1)			
	174 828 H1	GEAR and PINION SET (Differential, 878 614 C91)			
	174 829 H1	BEARING CAGE ASSEMBLY (Composed of - 1 CAGE 174 830 H1 1 CONE 179 503 H1 1 CONE 179 504 H1 (x) SPACER 174 831 H1)			

§ - Not Furnished Separately.  
x - As Required.

# SOLID AXLE

REF. NO.	PART NUMBER	DESCRIPTION	REF. NO.	PART NUMBER	DESCRIPTION
----------	-------------	-------------	----------	-------------	-------------

**BRAKE GROUP**  
 (Used on Axle Assembly, 878 607 C92, 890 623 C92, 878 613 C92, also 890 624 C92 and earlier)



CE-91971 B

878 604 C93	BRAKE ASSEMBLY, L.H.	(Consists of the following parts -		4	886 895 C92 BACKING PLATE ASSEMBLY, R.H.
					(Composed of -
878 605 C93	BRAKE ASSEMBLY, R.H.	(Consists of the following parts -			2 SCREW 131 020 R1
1	886 896 C91	SHOE w/LINING, 886 897 C1 (4)		5	131 026 R1 PIN, shoe guide (4)
1A	886 897 C1	LINING (4)		6	HA-1332 GASKET (4)
2	131 028 R1	SPRING, reverse return R.H. (2) L.H. (2)		7	HA-1335 FITTING, wheel cylinder (2)
3	131 027 R1	SPRING, forward return R.H. (2) L.H. (2)		8	HA-1333 GASKET (4)
4	885 394 C92	BACKING PLATE ASSEMBLY, L.H.		9	158 941 H1 BOLT, fitting (4)
		(Composed of -		10	158 939 H1 TUBE w/FITTINGS (2)
		2 SCREW 131 019 R1		11	886 899 C1 SCREW and spring WASHER (2)
		2 SCREW 158 928 H1		12	72 738 R1 FITTING, tube and line (2)
		2 SPRING 158 927 H1			
		2 WHEEL 158 926 H1)			

## SOLID AXLE

REF. NO.	PART NUMBER	DESCRIPTION	REF. NO.	PART NUMBER	DESCRIPTION
BRAKE GROUP - Continuer					
(Used on Axle Assembly, 878 C07 C92, 890 623 C92, 890 613 C92, also 890 624 C92 and earlier)					
13	203 590 H1	COVER, adjusting slot cover (4)			
14	131 019 R1	SCREW, L.H. adjusting (2)			
14	131 020 R1	SCREW, R.H. adjusting (2)			
15	158 926 H1	WHEEL, adjusting (4)			
16	158 927 H1	SPRING, adjusting wheel (4)			
17	158 928 H1	SCREW, adjusting wheel spring (4)			
17A	131 025 R1	PIN, anchor			
18	131 031 R91	SHIELD, L.H. spark (2)			
18	131 032 R91	SHIELD, R.H. spark (2)			
19		ROD, push (Not furnished separately) (@) (8)			
20	127 112 H1	SCREW, bleeder (@) (4)			
21		BOOT (Not furnished separately) (@) (%) (8)			
22		PISTON (Not furnished separately) (@) (8)			
23		CUP (Not furnished separately) (@) (%) (8)			
24	116 887 R2	SPRING and RETAINER (@) (4)			
25		BODY, wheel cylinder (Not furnished separately) (@) (4)			
26	87 771 R1	WASHER, shoe guide (4)			
27	159 266 H1	NUT, shoe guide (4)			
28	127 016 R1	RING, guide pin lock (4)			
29	131 097 R91	KIT, wheel cylinder repair (Consists of two BOOT, 131 095 R1 and two CUP, 49 174 H) (@)			
30	137 448 R91	WHEEL CYLINDER ASSEMBLY (4) (Composed of - 1 BLEEDER SCREW ASSY. 127 112 H1 § 1 BODY § 2 BOOT § 2 CUP § 2 PISTON 1 REPAIR KIT 131 097 R1 § 2 ROD 1 SPRING and RETAINER 116 887 R2)			

(@) - Also part of WHEEL CYLINDER ASSY., 137 448 R91.

(%) - Also part of REPAIR KIT, 131 097 R91.

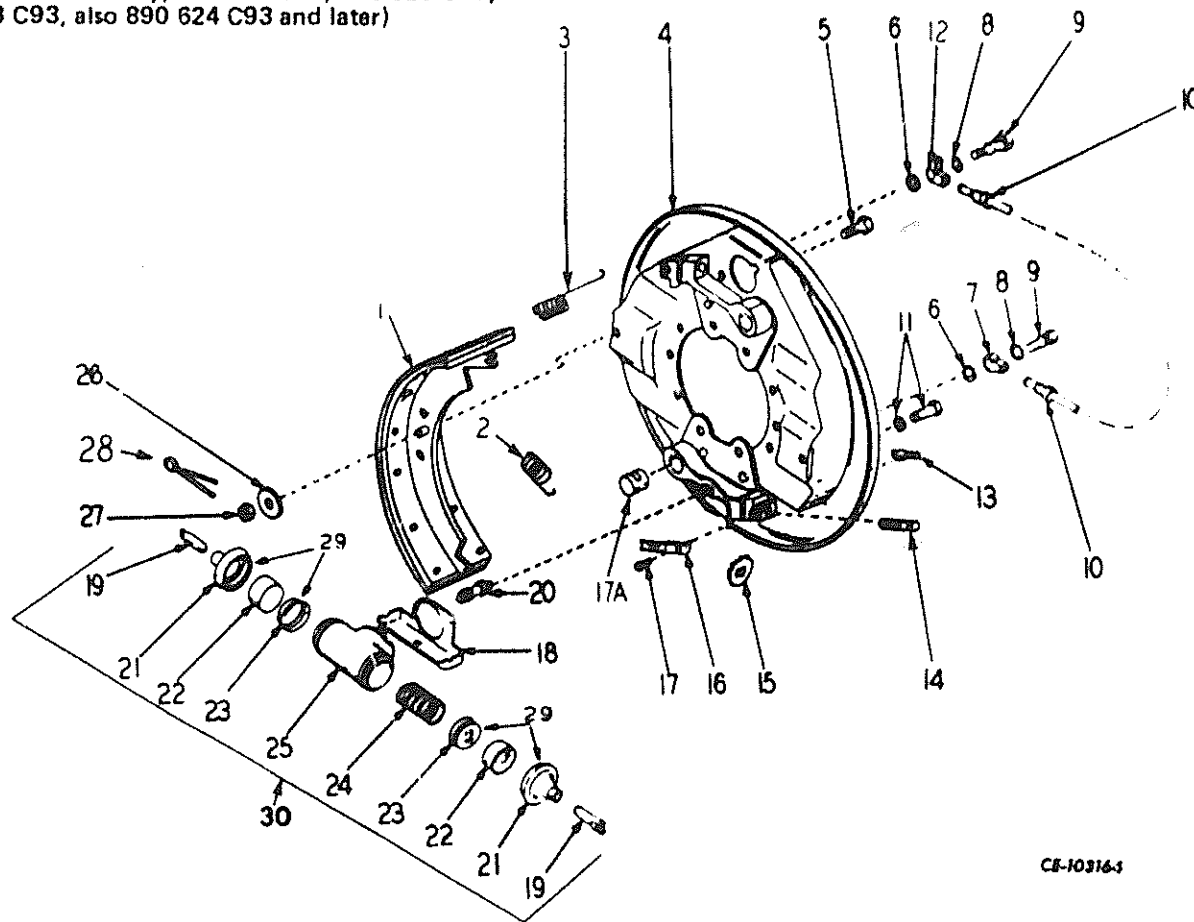
§ - Not Furnished Separately.

## SOLID AXLE

REF. NO.	PART NUMBER	DESCRIPTION	REF. NO.	PART NUMBER	DESCRIPTION
----------	-------------	-------------	----------	-------------	-------------

### BRAKE GROUP

(Used on Axle Assembly, 878 607 C93, 890 623 C93, 890 613 C93, also 890 624 C93 and later)



CS-103164

Parts without letters after the description indicate the part is used for all Brake Assemblies listed below. Letters "A" and "B" are used to identify separate Brake Assemblies.

			9	72 598 R1	BOLT, fitting (2)
			10	85 474 R91	TUBE, wheel cylinder
			11		SCREW, hex-hd cap (@) (4)
A	921 773 C92	BRAKE ASSEMBLY, L.H.	12	77 738 R1	FITTING, tube
B	921 793 C92	BRAKE ASSEMBLY, R.H. (Consists of the following parts -	13	131 033 R1	COVER, adjusting slot (2)
1	925 922 C1	BRAKE SHOE and LINING ASSEMBLY (Bonded) (2)	14		SCREW, adjusting (@) (2)
2	131 028 R1	SPRING, reverse return (2)	15		WHEEL, adjusting (@) (2)
3	131 027 R1	SPRING, forward return (2)	16		SPRING, adjusting wheel (@) (2)
4	925 917 C1	PLATE ASSEMBLY, backing (A)	17		SCREW, adjusting wheel spring (@) (2)
4	925 916 C1	PLATE ASSEMBLY, backing (B)	17A	131 025 R1	PIN, anchor (@) (2)
5	131 026 R1	BOLT, shoe guide (2)	18	131 031 R91	COVER, wheel cylinder (A) (2)
6	48 123 H	GASKET (2)	18	131 032 R91	COVER, wheel cylinder (B) (2)
7	48 168 H	FITTING, wheel cylinder			
8	48 122 H	GASKET (2)			

(@) - Also part of BACKING PLATE ASSEMBLY.

## SOLID AXLE

REF. NO.	PART NUMBER	DESCRIPTION	REF. NO.	PART NUMBER	DESCRIPTION
<b>SHAKE GROUP - Continued</b> (Used on Axle Assembly, 878 607 C93, 890 623 C93, 890 613 C93, also 890 624 C93 and later)					
19		ROD, push (Not furnished separately) (*) (4)			
20	78 492 R1	SCREW, bleeder (2)			
21		BOOT (Not furnished separately) (*) (%) (2)			
22	179 534 H1	PISTON (4)			
23		CUP (Not furnished separately) (*) (%) (2)			
24	116 887 R11	SPRING (2)			
25		BODY, wheel cylinder (Not furnished separately) (*) (2)			
26	87 771 R1	WASHER, shoe guide (2)			
27	159 266 H1	NUT, shoe guide (2)			
28	103 373	PIN, 3/32 x 3/4" cotter (2)			
29	131 097 R91	KIT, wheel cylinder repair (Consists of two BOOT, 131 095 R1 and two CUP, 49 174 H)			
30	137 448 R91	CYLINDER ASSEMBLY, wheel (2) (Composed of - § 1 BODY § 2 BOOT § 2 CUP 2 PISTON            179 534 H1 § 2 ROD 1 SPRING            116 887 R11 1 REPAIR KIT       131 097 R91)			
	876 567 C91	KIT, shoe guide bolt (Consists of - 2 BOLT                131 026 R1 2 NUT                 159 266 H1 2 PIN                  103 373 2 WASHER            87 771 R1)			

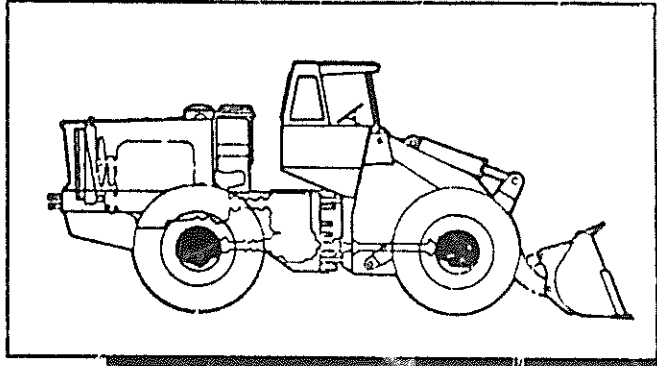
(\*) - Also part of WHEEL CYLINDER ASSEMBLY, 137 448 R91.

(%) - Also part of REPAIR KIT, 131 097 R91.

§ - Not Furnished Separately.

# SECTION 7

# STEERING AXLE



## Table Of Contents

**Group**

**Page**

STEERING AXLE (Not used on articulated models)