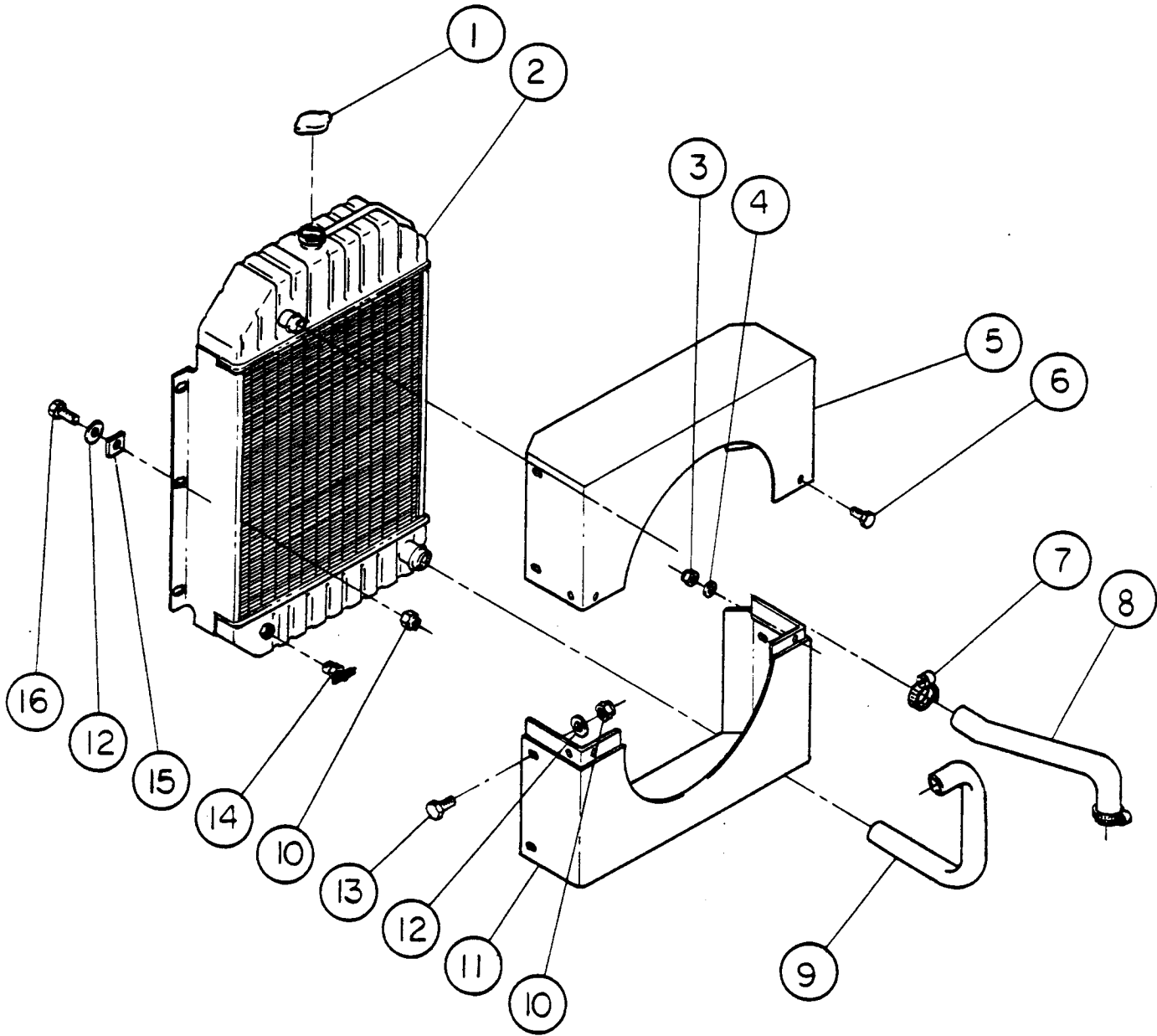


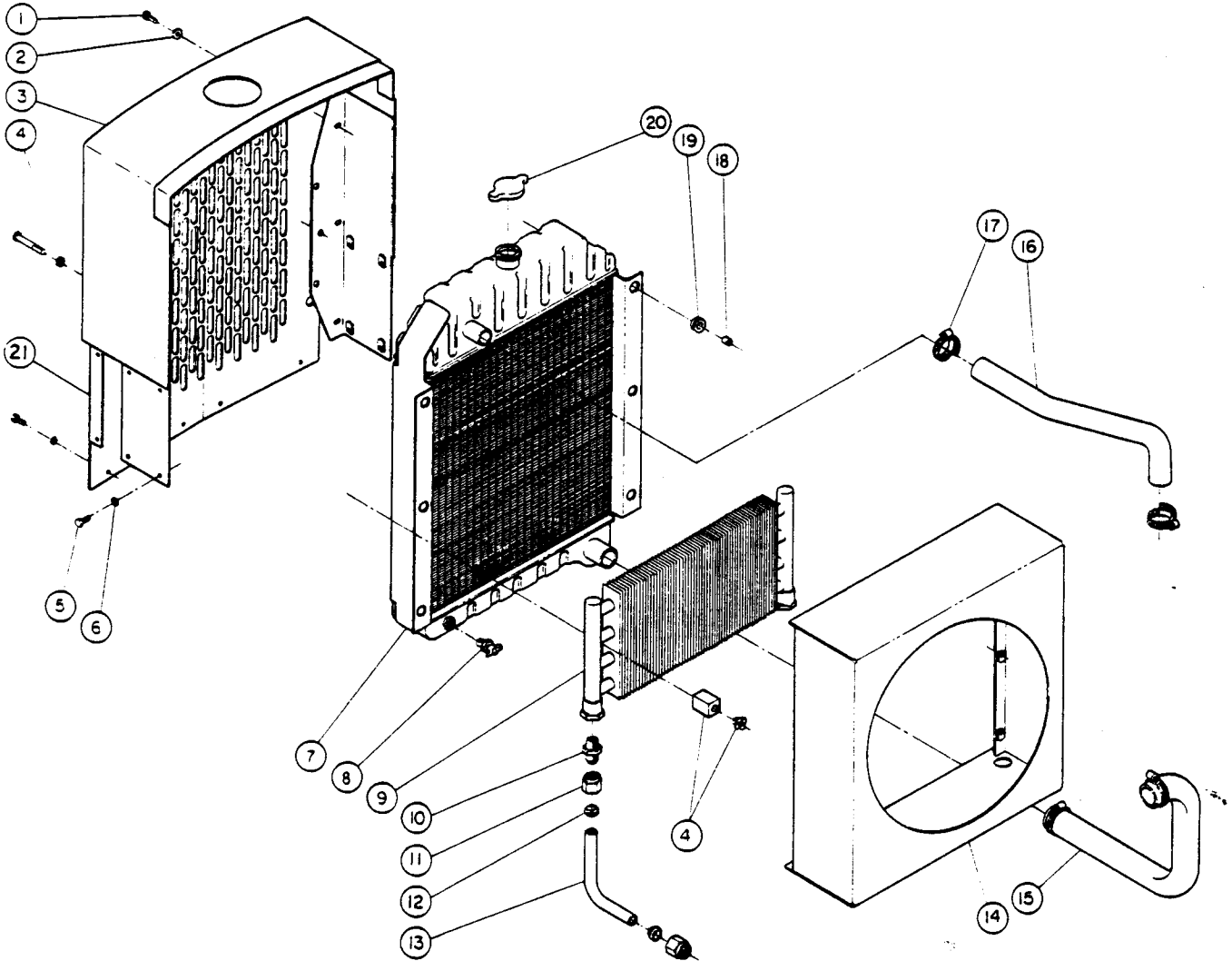
**COOLING SYSTEM
LOADER
S/N LC 30-0001 THRU LC30-0085**



Item No.	Part No.	LC-30 Qty.	Description
1	585066-2	1	Cap. Radiator
2	585066-21	1	Radiator Assembly (includes item 1)
3	K10-4	4	Nut, ESNA Hex Lock 1/4"-20NC
4		4	Washer, Flat-1/4"
5	580274-21	1	Shroud, Radiator Top
6		4	Bolt, Hex Cap 1/4"-20NC x 3/4"
7	L10-7	4	Clamp, Hose
8	585159-01	1	Hose, Radiator Upper

Item No.	Part No.	LC-30 Qty.	Description
9	585160-01	1	Hose, Radiator Lower
10	627111-13	10	Nut, ESNA Hex Lock 5/16"-24NF
11	580274-22	1	Shroud, Radiator Bottom
12		10	Washer, Flat-3/16"
13		4	Bolt, Hex Cap 5/16"-24NF x 3/4"
14	103647	1	Drain Cock-1/4" NPT
15	540280-1	6	Washer, Square
16		6	Bolt, Hex Cap 5/16"-24NF x 1"

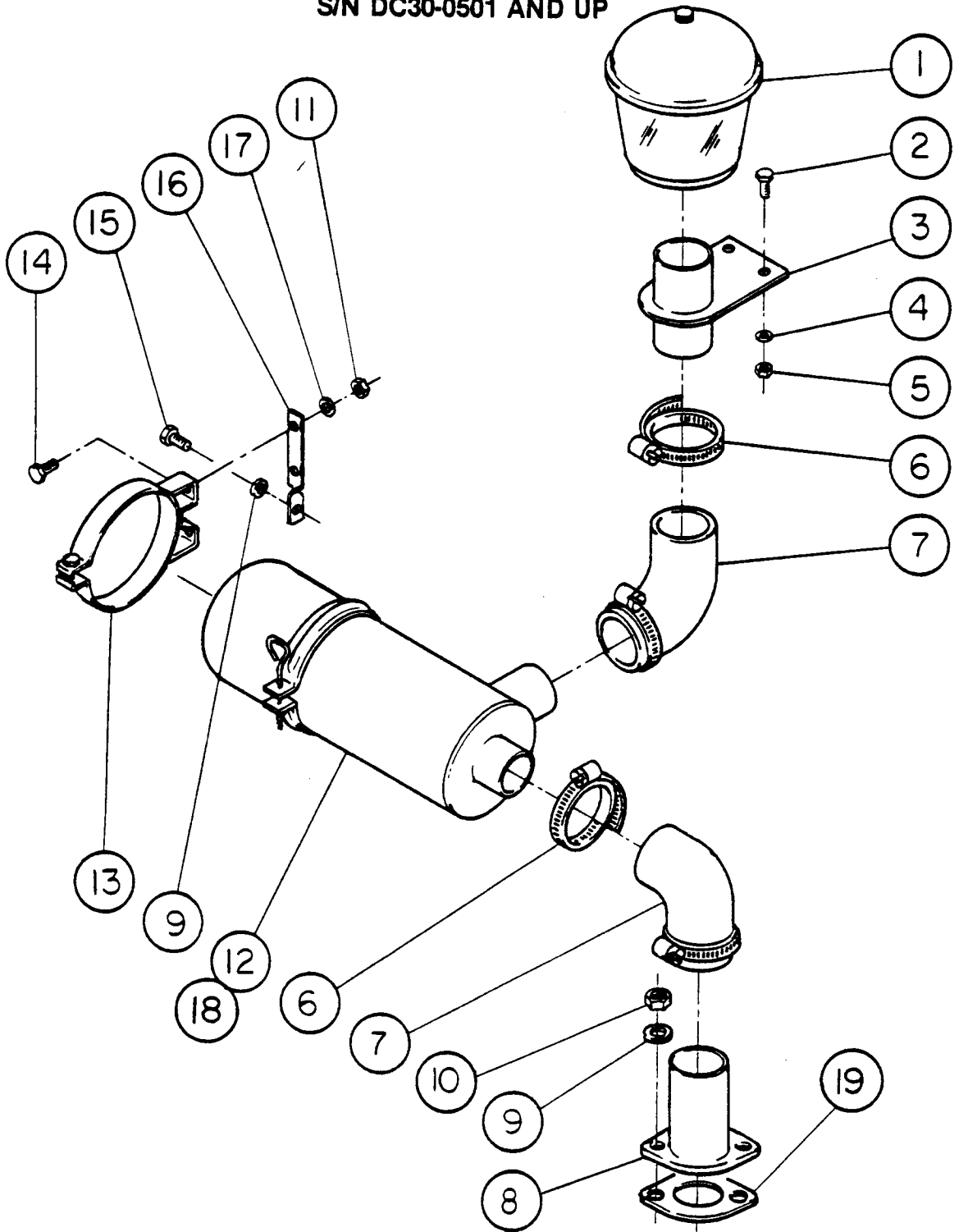
**COOLING SYSTEM
LOADER & DOZER
S/N LC30-0086 AND UP
S/N DC30-0501 AND UP**



Item No.	Part No.	LC-30 DC-30 Qty.	Description
1		6	Screw, Hex HD. Cap 1/4-20NC X 1 LG.
2	9421393	6	Washer, Flat 1/4 Large
3	580385-21	1	Weldment, Grill & Radiator Mount
4	585062-1	1	Kit, Trans. Cooler Mounting
5		18	Screw, Hex HD. Cap 1/4-20NC 5/8 LG.
6		18	Washer, Split Lock 1/4
7	585198-21	1	Radiator Assembly
8	103647	1	Drain Cock 1/4 NPT
9	585061-1	1	Oil Cooler
10	A13-12	2	Adapter, STR. 3/4 NPT X L-1/16 JIC
11	A54-12	4	Nut, Tube 3/4

Item No.	Part No.	LC-30 DC-30 Qty.	Description
12	A55-12	4	Ferrule, Tube 3/4
13	580462-1	2	Tube, Cooler Extension
14	580369-22	1	Shroud, Fan
15	585160-2	1	Hose, Lower Radiator
16	585159-2	1	Hose, Upper Radiator
17	L10-7	4	Clamp, Hose
18	540278-10	6	Spacer
19	U10-14	6	Grommet
20	585222-1	1	Radiator Cap
21	580375-21	1	Grill

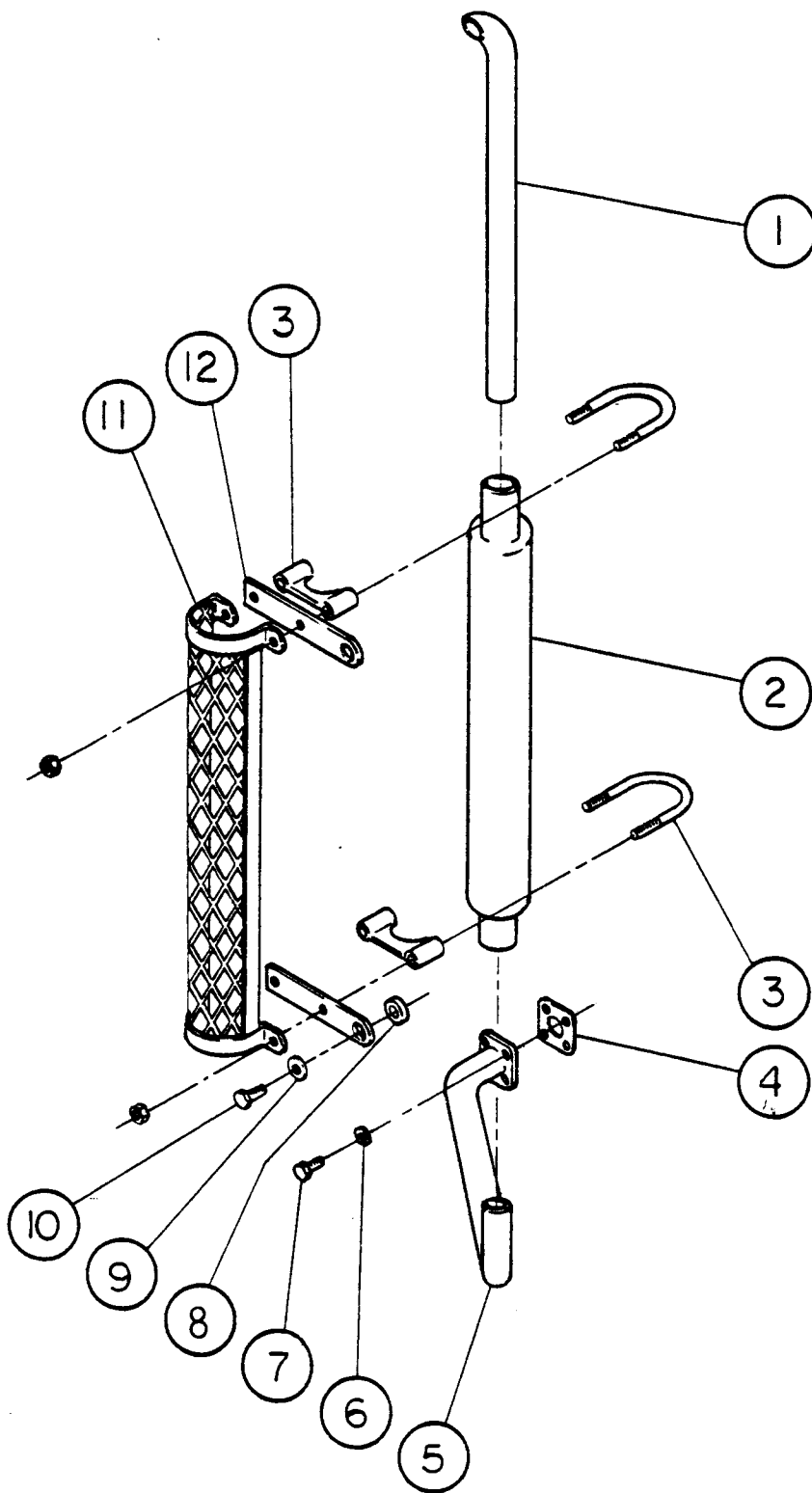
**AIR CLEANER INSTALLATION
LOADER & DOZER
S/N LC30-0001 AND UP
S/N DC30-0501 AND UP**



Item No.	Part No.	LC-30 DC-30 Qty.	Description
1	585106-1	1	Pre-Cleaner
2		2	Bolt, Hex. Cap. 1/4-20NC X 3/4"
3	580644-21	1	Adapter, Pre-Cleaner Mtg.
4		2	Washer, Lock 1/4"
5		2	Nut, Hex. 1/4-20NC
6	L10-11	4	Clamp Hose
7	540015-28		Hose, Air Flexible 1-3/4 I.D.
8	580229-22		Adapter, Intake
9	11500191		Washer
10	11501051	2	Nut, Hex. 8mm

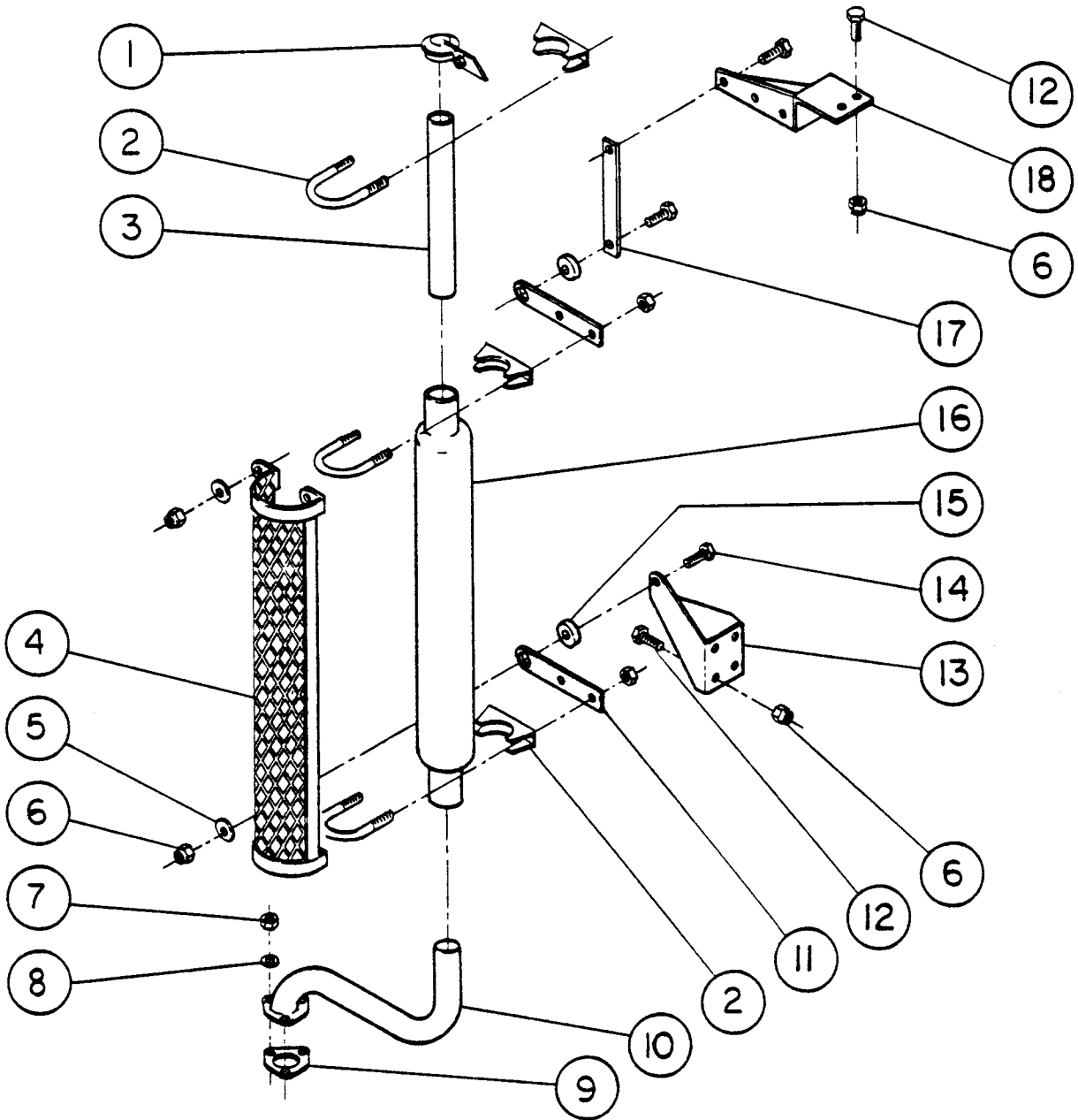
Item No.	Part No.	LC-30 DC-30 Qty.	Description
11		2	Nut, Hex. 5/16-18NC
12	585042-1	1	Air Cleaner, Cyclopac
13	585043	1	Band, Mounting
14		2	Bolt, Hex. Cap 5/16"-18NC X 3/4 LG.
15	F-21-820	1	Bolt, Hex. Cap (metric) M8 X 20mm
16	580242	1	Bracket, Air Cleaner Mounting
17			Washer
18	585042-51	1	Element, Air Cleaner
19	540288-1	1	Gasket

**EXHAUST SYSTEM
LOADER
S/N LC30-0001 AND UP**



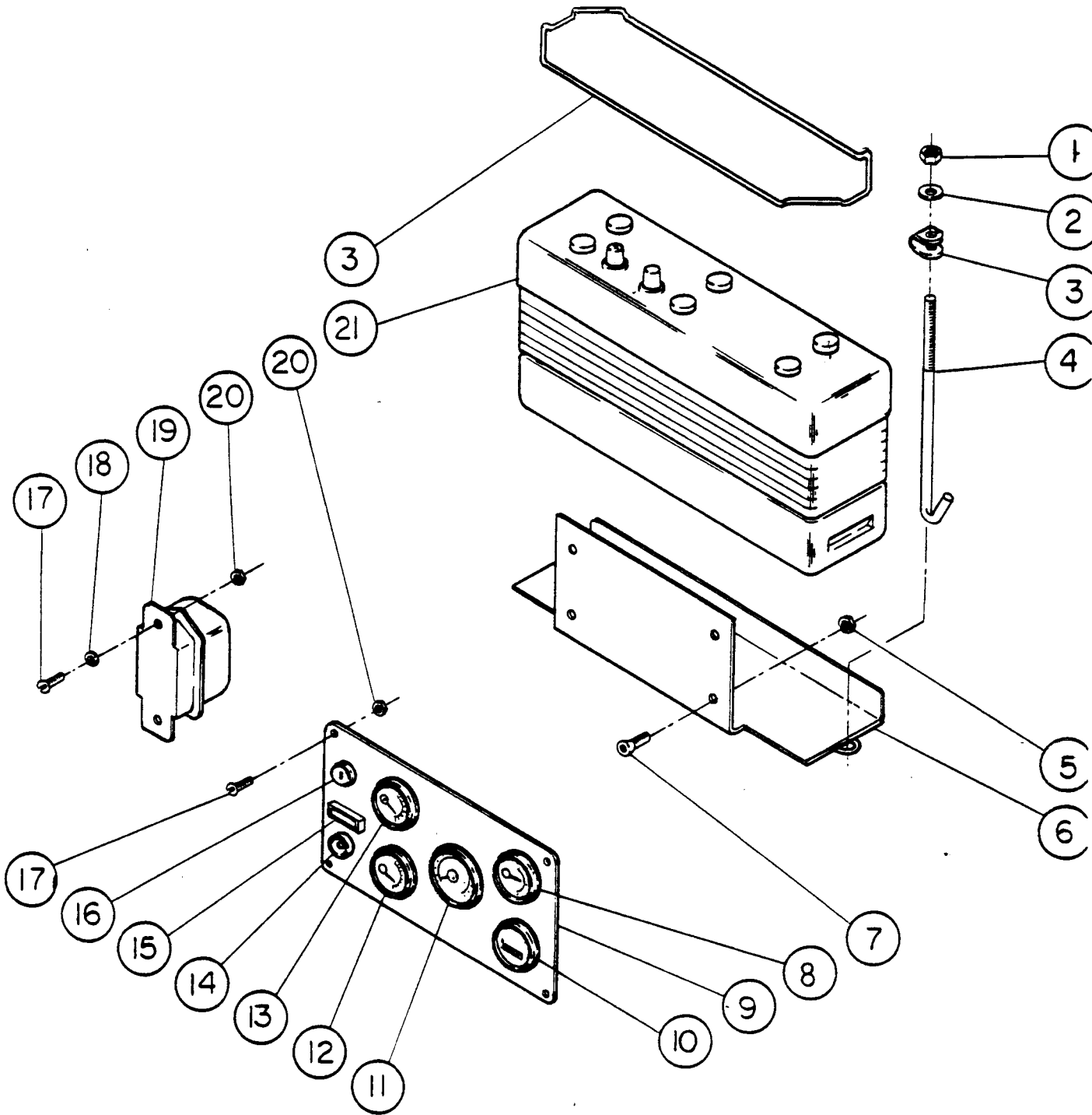
Item No.	Part No.	LC-30 Qty.	Description	Item No.	Part No.	LC-30 Qty.	Description
1	585131	1	Pipe, Exhaust-Upper	7	F21-820	4	Bolt, Hex Cap (metric) 8mm
2	585129	1	Muffler	8	585136	2	Grommet
3	585134	2	Clamp, "U" Clamp	9	585138	2	Washer, Fender 3/8"
4	540265-1	1	Gasket, Exhaust	10		2	Bolt, Hex Cap 3/8"-18NC
5	585156-21	1	Pipe, Exhaust-Lower	11	580277-21	1	Guard Weldment, Muffler
6	11500191	4	Washer, Lock (metric) 8mm	12	585135-02	2	Bracket, Muffler

**EXHAUST SYSTEM
DOZER
S/N DC30-0501 AND UP**



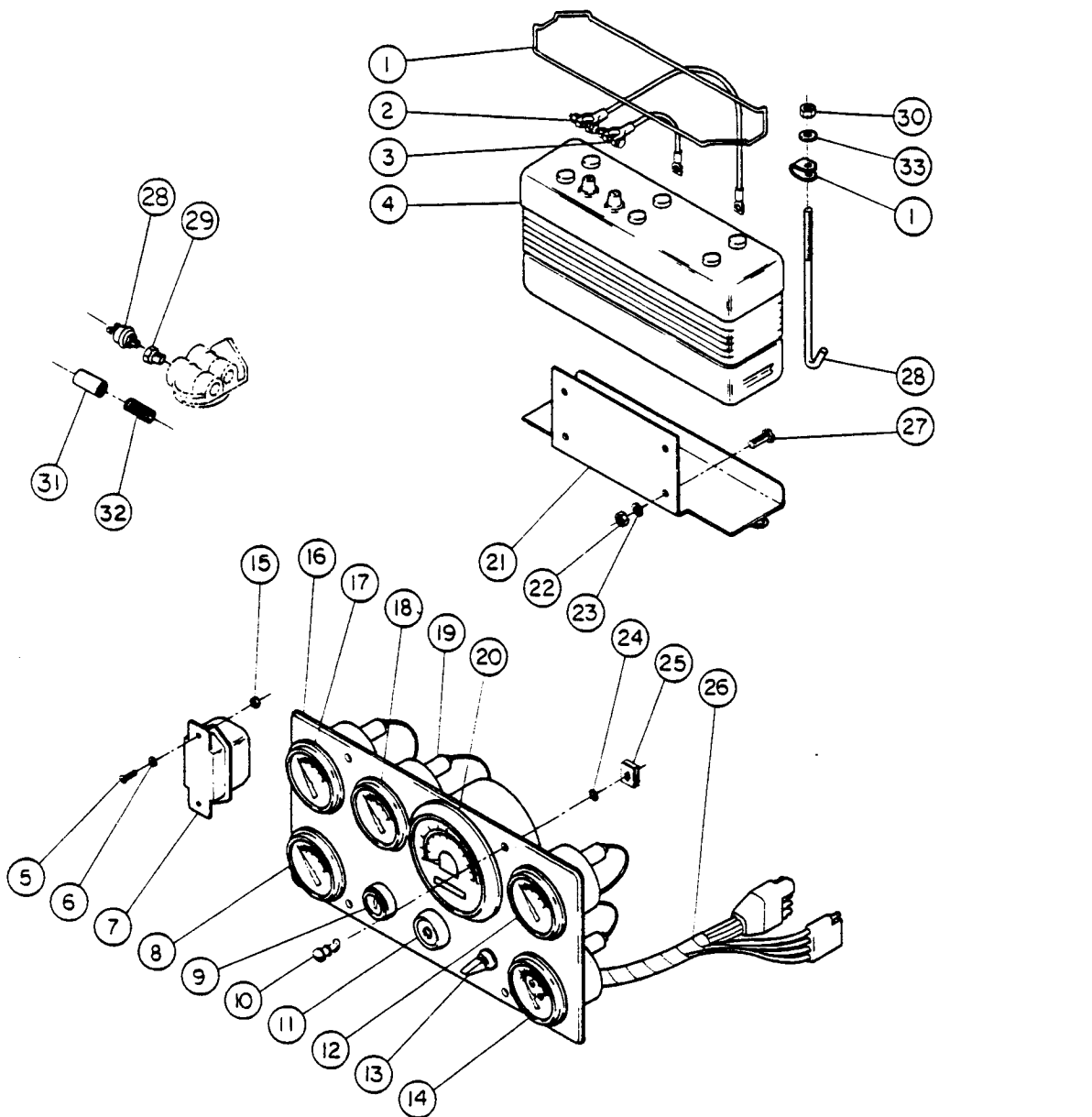
Item No.	Part No.	DC-30 Qty.	Description	Item No.	Part No.	DC-30 Qty.	Description
1	585244-1	1	Cap, Rain	9	580655-1	1	Gasket, Header Pipe
2	585134	3	Clamp, "U"	10	580646-21	1	Header Pipe
3	580654-1	1	Pipe, Exhaust, Upper	11	585135-02	2	Bracket, Muffler
4	580277-21	1	Guard, Muffler	12		7	Screw, Hex. HD. Cap, 5/16-18 UNC X 1 LG.
5	585138	2	Washer, Fender, 5/16	13	580647-21	1	Mounting Bracket, Exhaust
6	K10-5	9	Nut, Elastic Stop, 5/16-18UNC X 1 1/4 LG.	14		2	Screw, Hex. HD. Cap, 5/16-18 UNC X 1 1/4 LG.
7		3	Nut, Hex., M8 X 1.25	15	585136	2	Grommet
8		3	Washer, Flat, M8	16	585129-1	1	Muffler
				17	580653-1	1	Link
				18	580652-21	1	Mount Exhaust

**ELECTRICAL INSTALLATION
LOADER
S/N LC30-0001 THRU LC30-0085**



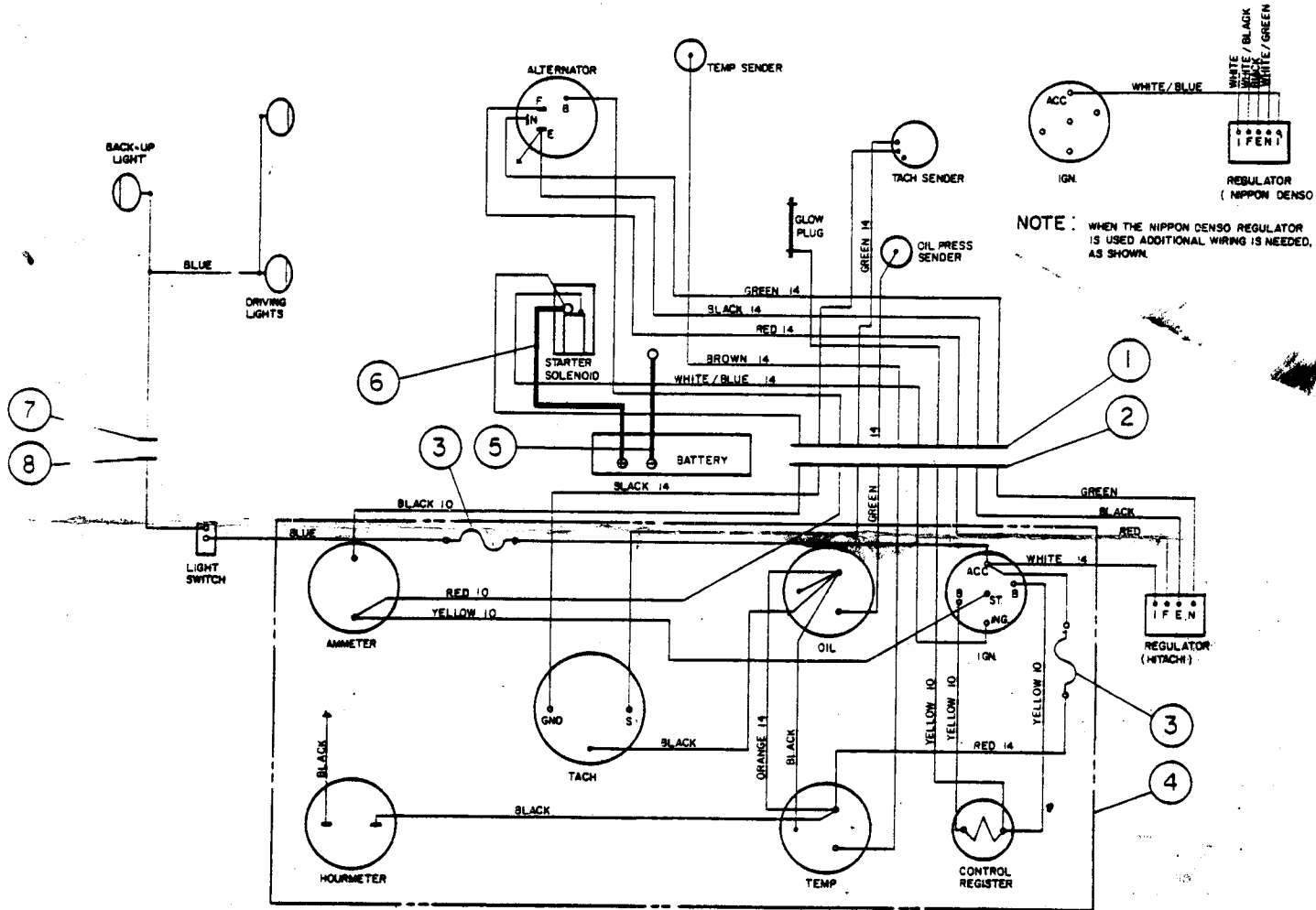
Item No.	Part No.	LC-30 Qty.	Description	Item No.	Part No.	LC-30 Qty.	Description
1		4	Nut, Hex $\frac{3}{8}$ "-24-NF	12	536208	1	Gauge, Water-Temperature
2		4	Washer, Flat- $\frac{3}{8}$ "	13	536206	1	Gauge, Oil Pressure
3	585144	1	Bracket Battery Hold Down	14	585168-1	1	Control Resistance
4	605315	2	Bolt, Battery Hold-Down	15	585059	1	Indicator, Remote Oil Condition
5		4	Nut, Hex $\frac{3}{8}$ "-24-NF	16	585167-21	1	Ignition Assembly
6	580225-21	1	Box Assembly Battery	17		6	Screw, Round Head #10-24-NC x $\frac{1}{2}$ "
7		4	Screw, Flat Head Socket $\frac{3}{8}$ "-24 NF x $\frac{1}{2}$ "	18		2	Washer, Flat #10
8	580292	1	Ammeter	19	585169-1	1	Regulator Voltage
9	580230	1	Panel, Dash	20		6	Nut, Hex #10-24-NC
10	640266	1	Hourmeter	21	585109	1	Battery
11	585115	1	Tachometer				

**ELECTRICAL INSTALLATION
 LOADER & DOZER
 S/N LC30-0086 AND UP
 S/N DC30-0501 AND UP**



Item No.	Part No.	LC-30 DC-30 Qty.	Description	Item No.	Part No.	LC-30 DC-30 Qty.	Description
1	585144	1	Bracket Battery Hold Down	17	585203-4	1	Gauge, Water Temp.
2	585128	1	Cable, Battery Positive	18	585203-5	1	Gauge, Oil Pressure
3	585127	1	Cable, Battery Ground	19	585203-6	5	Light Kit, 12V DC
4	585109	1	Battery	20	585203-7	1	Gauge, Tach W/Hourmeter 5.1 Ratio
5		2	Screw Rd. Hd. Mach., #10-24NC X 1/2 LG.	21	580225-21	1	Box Assembly, Battery
6		2	Washer, Flat #10 Small	22		4	Nut, Hex 5/16 NC
7	585169-1	1	Regulator, Voltage	23		4	Washer, Split Lock 5/16
8	585203-3	1	Gauge, Voltmeter	24	L17-2	4	Retainer
9	585167-21	1	Ignition Assembly	25	L16-3	4	Receptacle
10	L15-15	4	Stud	26	585203-11	1	Harness, Instrument Panel
11	585168-1	1	Control Resistance	27		4	Screw, Hex. HD. Cap 5/16-18NC X 3/4 LG.
12	585203-8	1	Gauge, Oil Temp	28	605315	2	Rod, Battery Hold Down
13	585204-1	1	Switch, Toggle	29	A88-55	2	Bushing, 1/2 NPT Male 1/8 NPT Female
14	585203-1	1	Gauge, Fuel	30		2	Nut, Hex. 3/8-24NF
15		2	Nut, Hex. HD. #10-24NC	31	B16-2	1	Coupling, 1/8 NPT
16	585203-2	1	Panel, Instrument	32	B12-2	1	Nipple, Pipe, 1/8 NPT
				33		2	Washer, Flat 3/8 Small

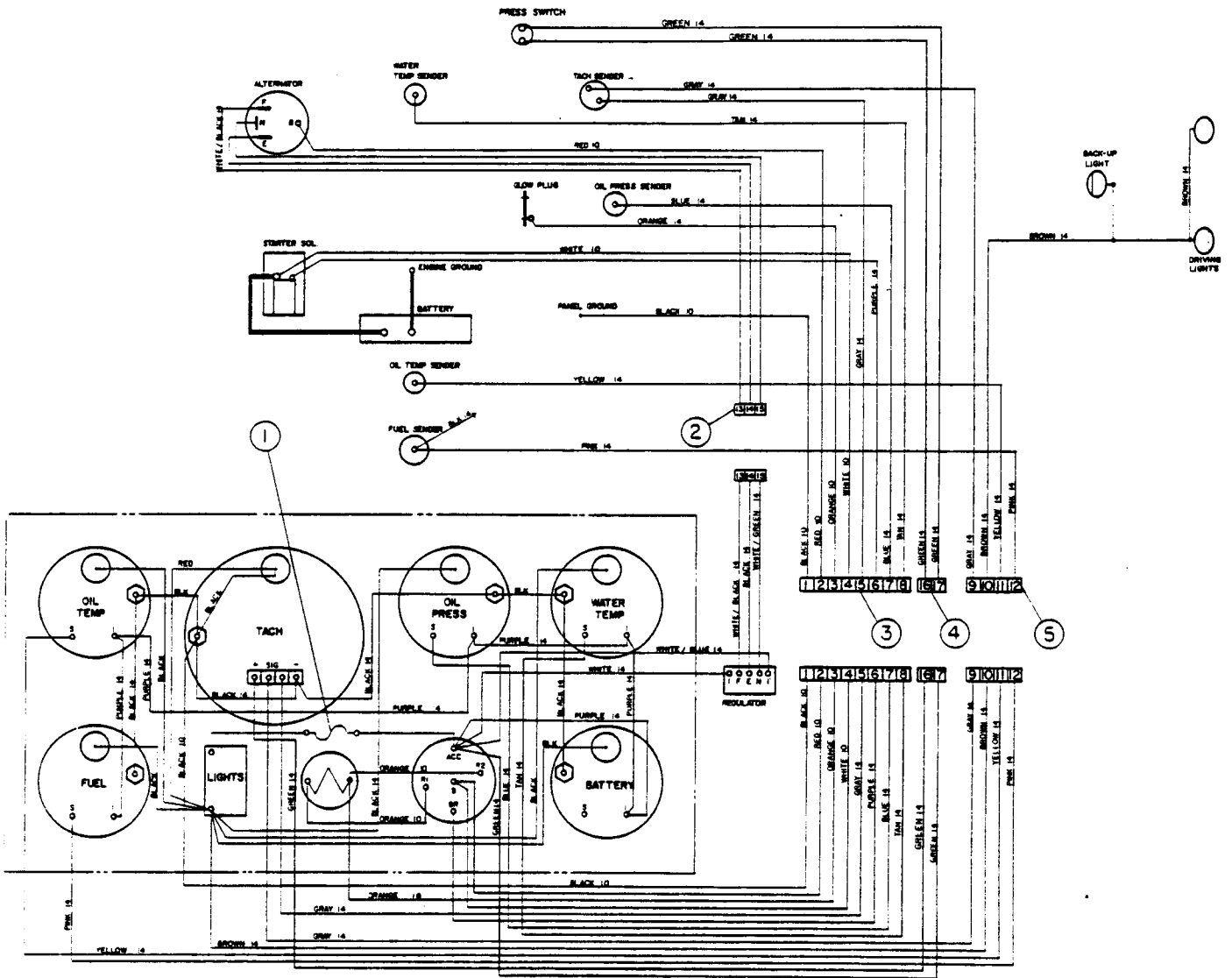
ELECTRICAL DIAGRAM LOADER S/N LC30-0001 THRU LC30-0085



Item No.	Part No.	LC-30 Qty.	Description
1	580296	1	Harness, Engine
2	580297	1	Harness, Instrument to Engine
3		2	Fuse, 15 amp
4	580298	1	Panel, Assembly Instrument

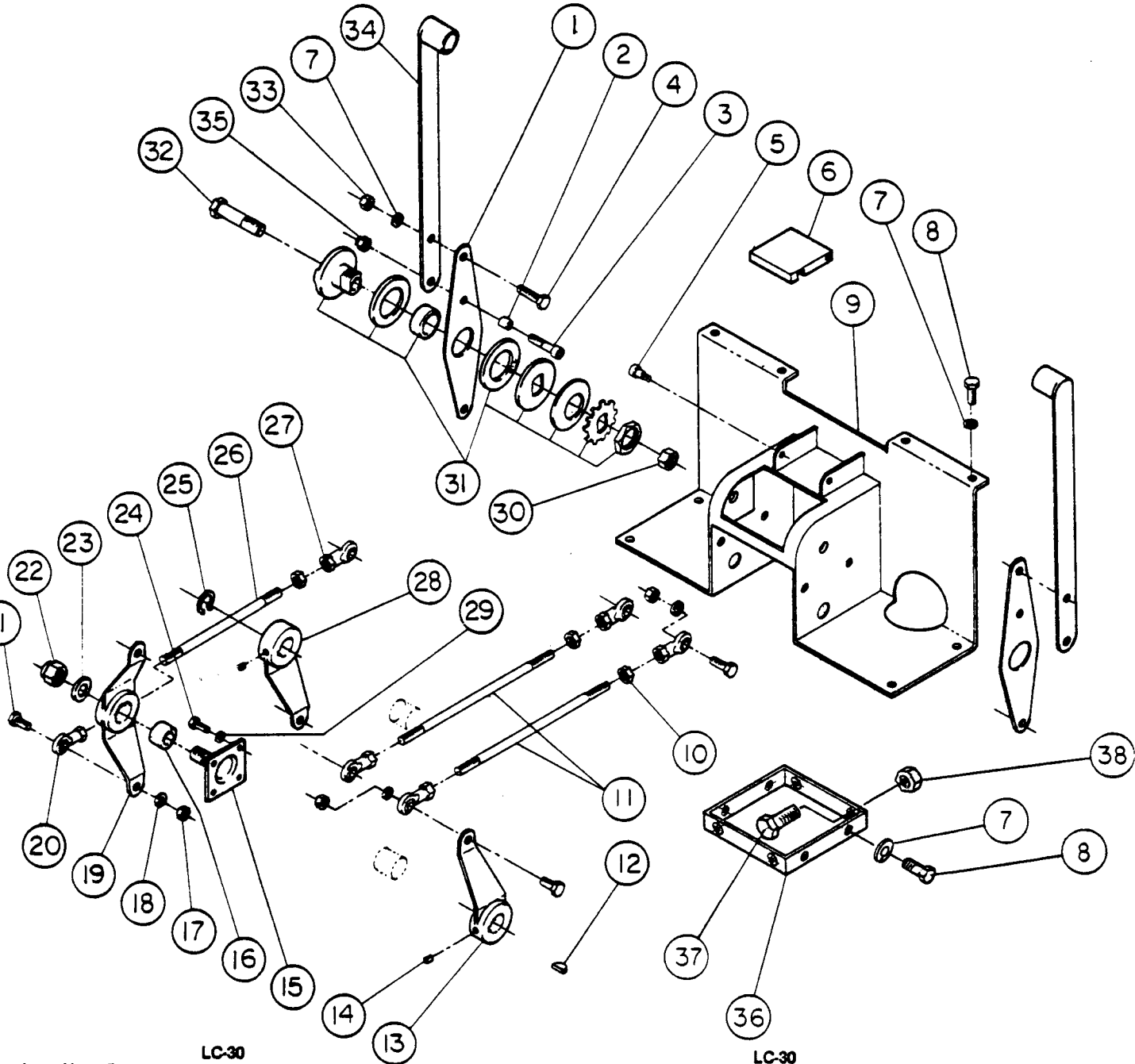
Item No.	Part No.	LC-30 Qty.	Description
5	585127	1	Cable, Battery Ground
6	585128	1	Cable, Battery Positive
7		1	Harness Lights
8		1	Harness Switch to Lights

ELECTRICAL DIAGRAM LOADER & DOZER S/N LC30-0086 AND UP S/N DC30-0501 AND UP



Item No.	Part No.	LC-30 DC-30 Qty.	Description	Item No.	Part No.	LC-30 DC-30 Qty.	Description
1		1	Fuse, 15 Amp	4		1	Harness, Tach to Press Switch
2		1	Harness, Reg. to Alt	5	585203-10	1	Harness, Engine, 4 Wire
3	585203-9	1	Harness, Engine, 8 Wire				

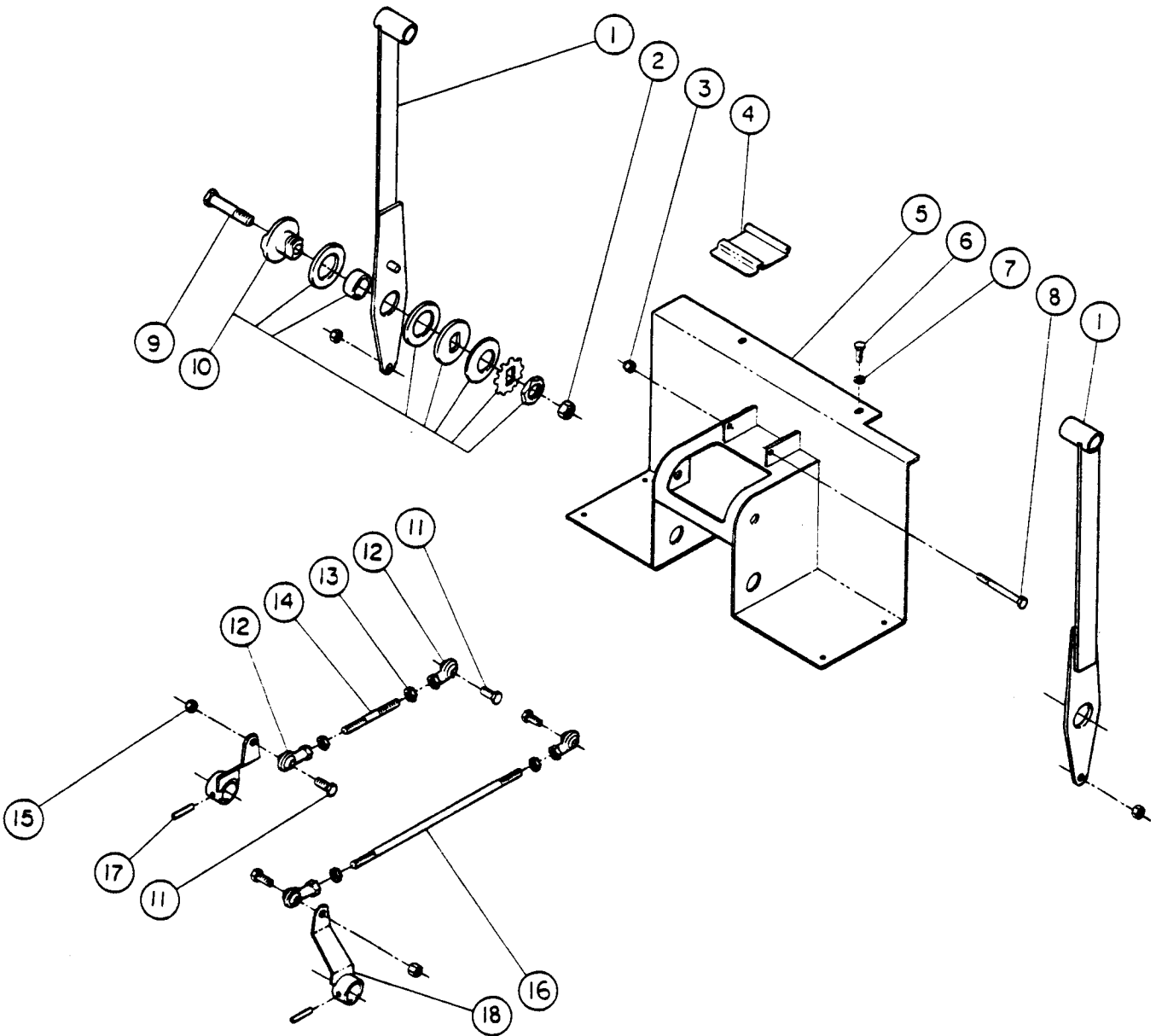
**CONTROLS GROUP
LOADER
S/N LC30-0001 THRU LC30-0085**



Item No.	Part No.	LC-30 Qty.	Description
1	580249	2	Plate, Friction
2	540287-4	2	Bushing, Spacer-Metallic
3	9421639	2	Screw, Socket Head Cap $\frac{3}{16}$ "-24NF x 1"
4		2	Bolt, Hex, Head Cap $\frac{3}{16}$ "-18NC x 1"
5	585119	2	Screw, Shoulder- $\frac{3}{16}$ x $\frac{3}{8}$ x $\frac{1}{4}$ -20NC
6	580251	1	Plate, Lock
7		14	Washer, Lock $\frac{3}{16}$ "
8		12	Bolt, Hex Head Cap $\frac{3}{16}$ "-18NC x $\frac{3}{4}$ "
9	580259	1	Housing, Control
10		3	Nut, Hex $\frac{3}{8}$ -24NF
11	580250	2	Rod, Control
12	127559	2	Key, Woodruff $\frac{1}{4}$ " x $\frac{3}{4}$ "
13	580095	1	Arm, Pump-Left
14	222405	2	Screw, Socket-Set $\frac{1}{4}$ "-20 x $\frac{3}{8}$ "
15	580092	1	Shaft, Idler
16	540284-8	1	Bushing, Idler Arm
17		6	Nut, Hex $\frac{3}{8}$ -16NC
18		6	Washer, Lock $\frac{3}{16}$ "
19	580093	1	Arm, Idler

Item No.	Part No.	LC-30 Qty.	Description
20	T10-6	3	Rod End
21		6	Bolt, Hex Head Cap $\frac{3}{8}$ "-16NC x $1\frac{1}{4}$ "
22	126023	1	Nut, Lock $\frac{3}{8}$ -18NF
23		1	Washer, Flat $\frac{3}{16}$ "
24		4	Bolt, Hex Head $\frac{1}{4}$ -20NC x $\frac{3}{4}$
25	627174-1	2	Ring, Retaining-External
26	580088	1	Rod, Drag
27	T11-6	3	Rod End
28	580094	1	Arm, Pump-Right
29	103319	4	Washer, Spring Lock- $\frac{1}{4}$ "
30	K10-8	2	Nut, Lock $\frac{1}{2}$ -13NC
31	585150	2	Limiters, Torque
32		2	Bolt, Hex Head $\frac{1}{2}$ -13NC x $2\frac{3}{4}$ "
33		2	Nut, Hex $\frac{3}{8}$ -18NC
34	580248	2	Handle, Control
35	627118-12	2	Nut, JAM, ESNA $\frac{3}{8}$ -24NF
36	580370-21	1	Bracket - Control Adj.
37		4	Capscrew $\frac{3}{16}$ -24NF x $1\frac{1}{4}$
38	K12-5	4	Nut, JAM $\frac{3}{8}$ -24NF

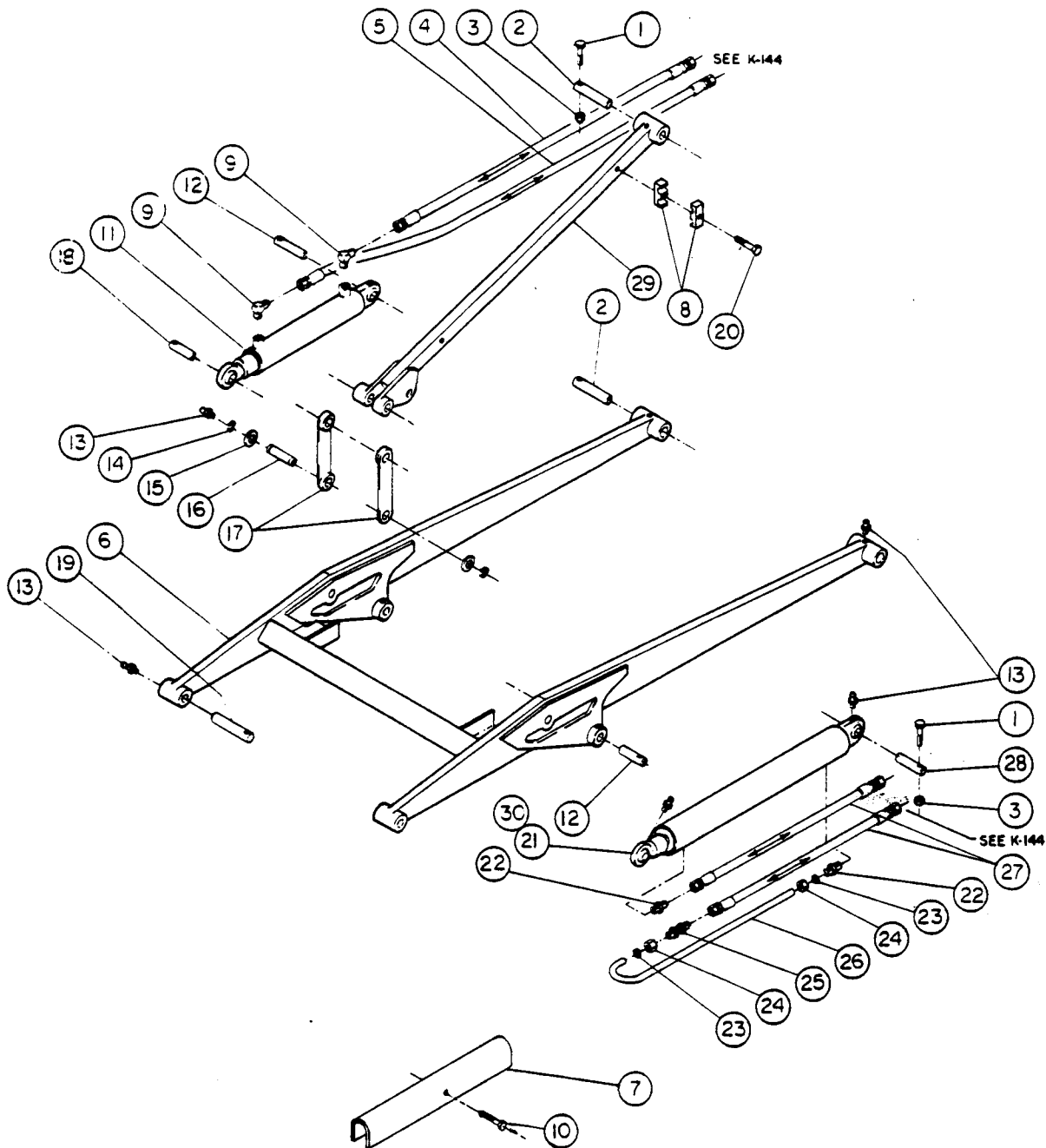
**CONTROLS GROUP
LOADER & DOZER
S/N LC30-0086 AND UP
S/N DC30-0501 AND UP**



Item No.	Part No.	LC-30 DC-30 Qty.	Description
1	580443-21	2	Lever Control
2	K10-8	2	Nut, Elastic Stop 1/2-13NC
3	K10-4	1	Nut, Elastic Stop 1/4-20NC
4	580675-21	1	Neutral, Lock
5	580448-21	1	Control Housing
6		8	Screw, Hex HD, Cap 5/16-18NC 3/4 LG.
7		8	Washer, Split Lock 5/16
8		1	Screw Hex HD, Cap 1/4-20NC X 3 3/4 LG.
9		2	Screw Hex HD, Cap 1/2-13NC X 2 3/4 LG.

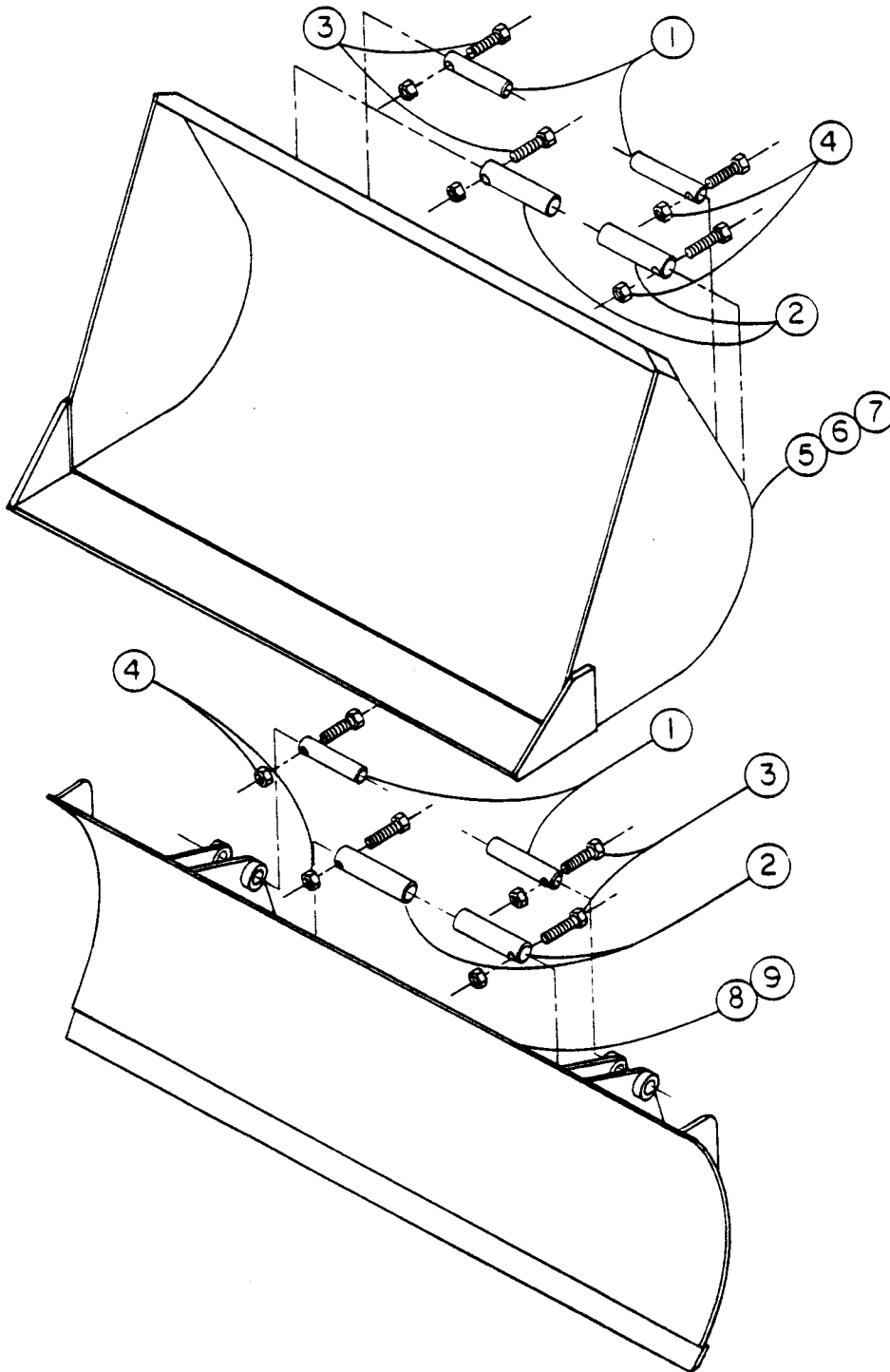
Item No.	Part No.	LC-30 DC-30 Qty.	Description
10	585150	2	Torque Limiter
11		4	Screw, Hex HD, Cap 3/8-16NC X 1 1/4 LG.
12	T11-6	4	Rod End
13		4	Nut, Hex 3/8-24NF
14	540303-7	1	Rod, Control
15		4	Nut, Hex 3/8-16NC
16	540303-6	1	Rod, Control
17	627454-2	2	Pin, Spring 1/4 (Roll Pin)
18	580398-2	2	Lever, Transmission

LIFT SYSTEM LOADER S/N LC30-0001 AND UP



Item No.	Part No.	LC-30 Qty.	Description	Item No.	Part No.	LC-30 Qty.	Description
1		14	Screw, Hex. HD Cap. 5/16-18NC X 2½	16	540275-3	4	Pin
2	540274-6	8	Pin	17	580067	4	Link Ass'y.
3	K10-5	14	Nut, Elastic Stop 5/16-18UNC	18	540274-2	2	Pin
4	540313-1	2	Hose Ass'y. #8 Hyd. X 63"	19	580304-3	2	Pin, Cross Drilled
5	540313-2	2	Hose Ass'y. #8 Hyd. X 73"	20		4	Screw, Hex HD. Cap. 5/16-18UNC X 3
6	580436-21	1	Boom Ass'y. Main	21	585015-1	1	Cylinder Ass'y. Lift (Left)
7	580260	1	Safety Bar, Boom	22	A19-8	4	Connector, Str. #8 JIC X #8 ORB
8	576119-13	4	Clamp, Hose	23	A55-8	4	Ferrule, Tube #8
9	A18-8	4	Elbow 90° #8 Ext. JIC X #8 ADJ ORD	24	A54-8	4	Nut, Tube #8
10		1	Screw, ¼-20UNC X 2¼ LG.	25	A41-8	2	Connector, Str. Bulkhead #8 JIC
11	585177-1	2	Cylinder Ass'y. Bucket	26	585058	2	Tube, Cylinder
12	540274-1	4	Pin, .875" X 3.50" LG.	27	540313-25	4	Hose Ass'y. #8 X 34" LG.
13	271287	18	Fitting, Lube ¼-28NF	28	540274-3	2	Pin
14	627174-16	8	Ring, Retaining - Ext.	29	580280-21	2	Arm Ass'y. Level
15	M11-14	8	Washer, Narrow 7/8"	30	585015-2	1	Cylinder Ass'y. Lift (Right)

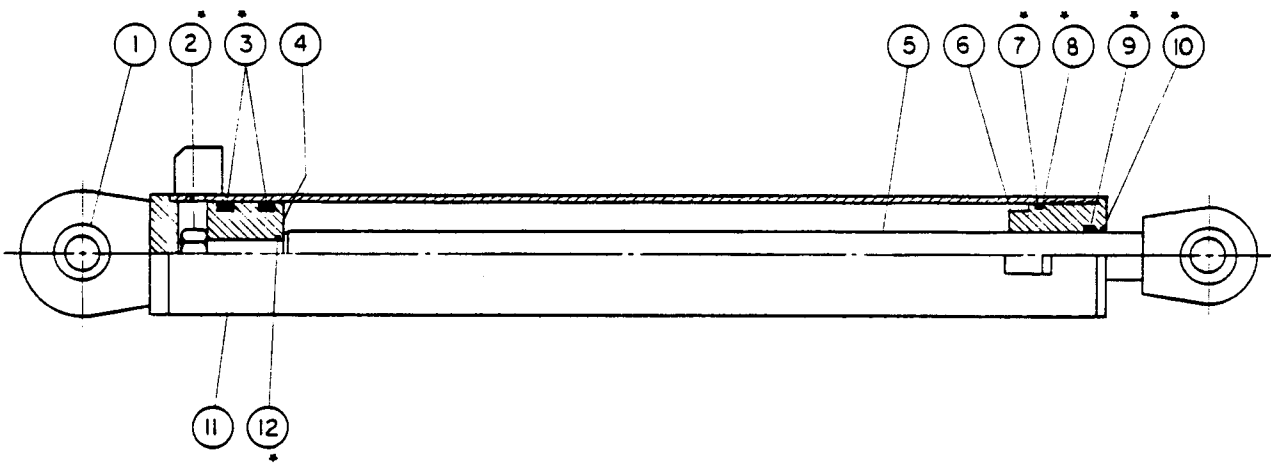
**LIFT SYSTEM ATTACHMENTS
LOADER
S/N LC30-0001 AND UP**



Item No.	Part No.	LC-30 Qty.	Description
1	540274-2	2	Pin, Cylinder (Upper)
2	580304-3	2	Pin, Boom (Bottom Mtg)
3		4	Screw, Hex. HD. Cap. 5/16-18UNC X 2 1/2
4	K10-5	4	Nut, Elastic Stop, 5/16-18UNC
5	580284-21	1	Bucket Ass'y. 1/2 Cu. Yd.

Item No.	Part No.	LC-30 Qty.	Description
6	580339-21	1	Utility Bucket Ass'y. - 48" Wide
7	580339-22	1	Utility Bucket Ass'y. - 52" Wide
8	580343-21	1	Utility Blade Ass'y. - 60" Wide
9	580343-22	1	Utility Blade Ass'y. - 48" Wide

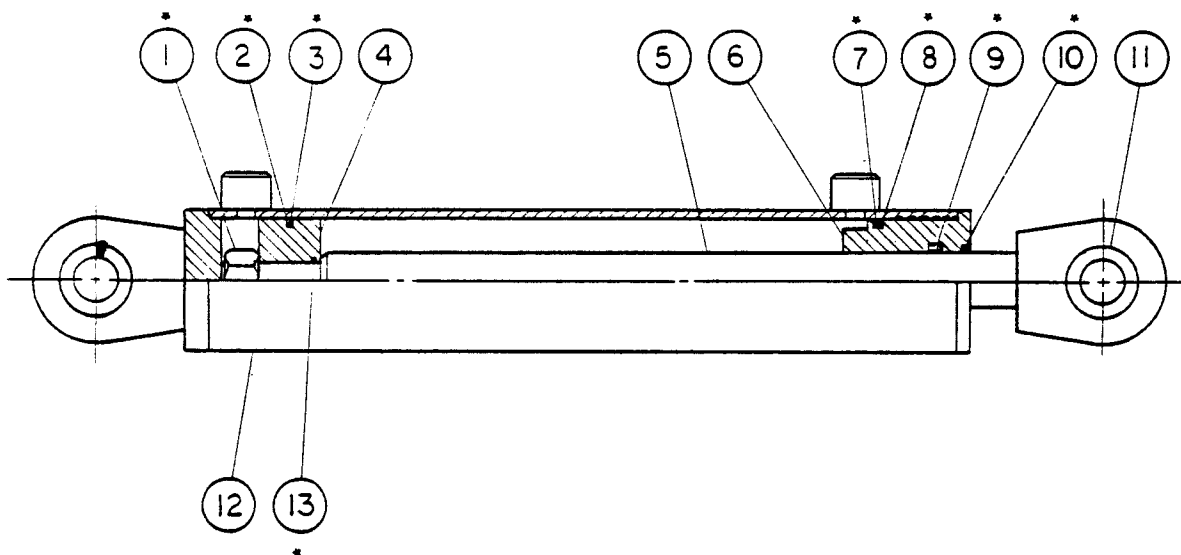
**LIFT CYLINDER
LOADER
S/N LC30-0001 AND UP**



Item No.	Part No.	LC-30 Qty.	Description
1	T21-2	2	Spherical Bearing
*2		1	Nut, 3/4-16UNF, Lock
*3	N14-3	2	Seal - Piston
4	585260-1	1	Piston
5	585265-1	1	Rod
6	585256-1	1	Head

Item No.	Part No.	LC-30 Qty.	Description
*7	N10-230	1	O-Ring, Head
*8	N13-230	1	Back Up Ring, Head
*9	N15-2	1	Seal - Rod
*10	N16-13	1	Wiper - Rod
11	585015	1	Shell
*12	N10-020	1	O-Ring
*585162-21 Seal Kit			

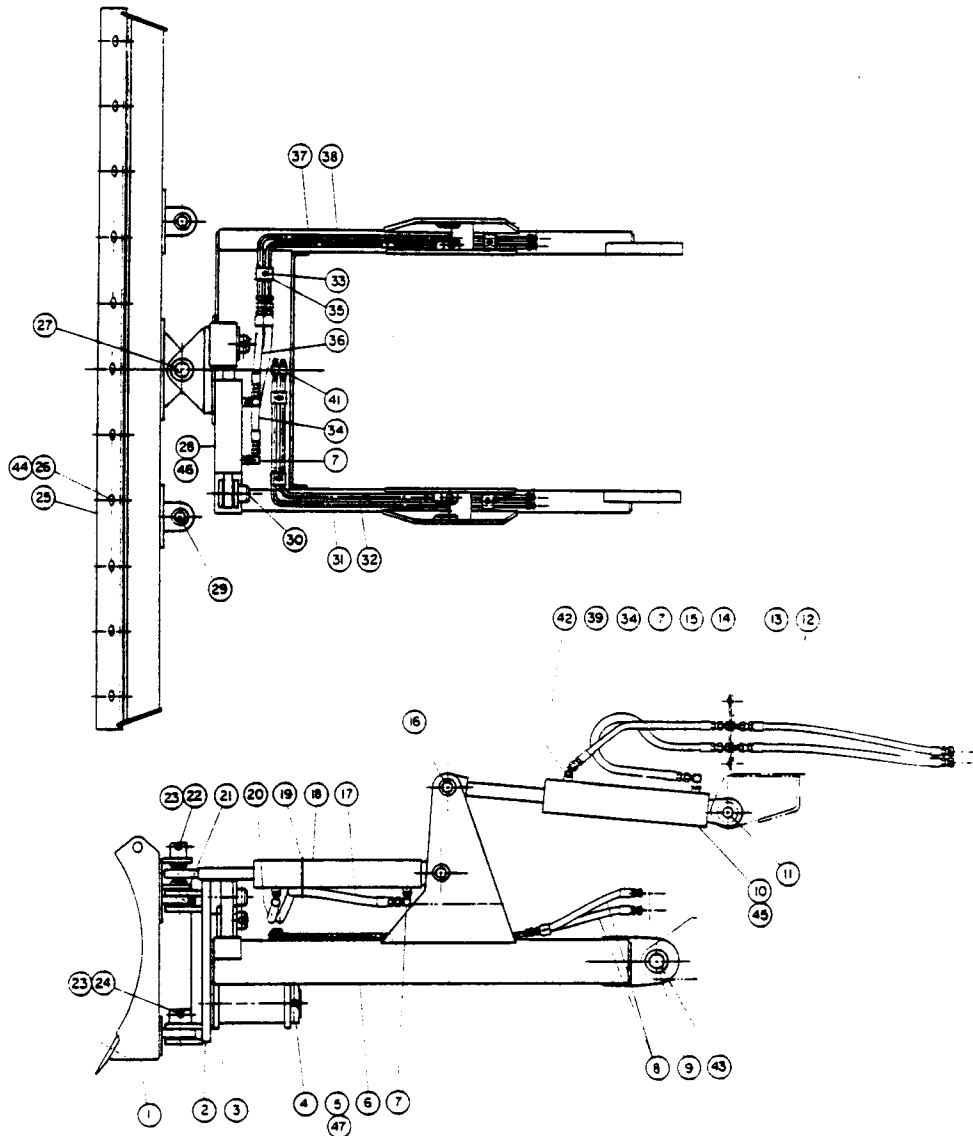
**DUMP CYLINDER
LOADER
S/N LC30-0001 AND UP**



Item No.	Part No.	LC-30 Qty.	Description
*1		1	Nut, 3/4-16UNF, Lock
*2	N12-2	1	Sirvon Ring
*3	N10-137	1	O-Ring
4	585261-1	1	Piston
5	585266-1	1	Rod
*6	585257-1	1	Head
*7	N10-228	1	O-Ring, Head

Item No.	Part No.	LC-30 Qty.	Description
*8	N13-228	1	Back Up Ring, Head
*9	N15-1	1	Seal - Rod
*10	N16-11	1	Wiper - Rod
11	T21-2	2	Spherical Bearing
12	585177	1	Shell
*13	N10-018	1	O-Ring
*585246-21 Seal Kit			

BLADE ASSEMBLY DOZER S/N DC30-0501 AND UP

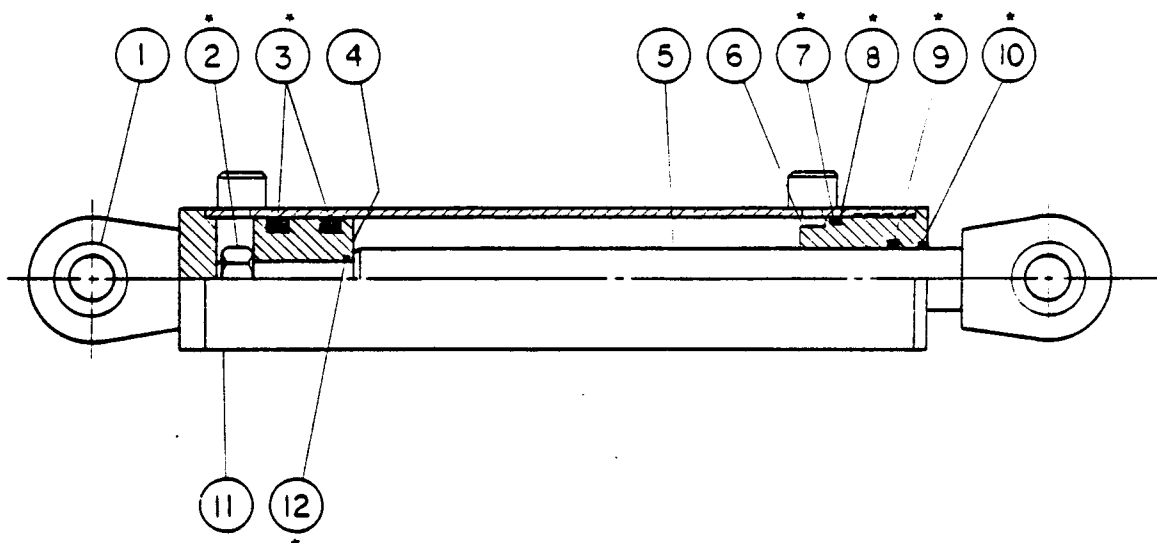


Item No.	Part No.	DC-30 Qty.	Description	Item No.	Part No.	DC-30 Qty.	Description
1	580480-21	1	Blade Weldment	13	A41-6	4	Bulkhead Connector, 9/16 JIC
2	580494-21	1	Yoke Weldment	14	580628-1	2	Cover Plate
3	580618-1	1	Spacer	15		4	Screw, Hex. HD. Cap. 1/4-20UNC X 1/2 LG.
4	580620-1	1	Retaining Ring	16	540274-10	4	Pin, 7/8 X 3 1/2 LG.
5	F26-317	1	Screw, Hex. HD. Cap. GR8 3/8-16UNC X 4 1/2 LG.	17	540313-17	2	Hose Assembly, #6 X. 24 LG.
6	580614-21	1	C-Frame Weldment	18	585210-2	2	Hyd. Cylinder, 2 Bore
7	A18-6	8	Elbow 90°, 9/16 JIC/9/16 ORB	19	L14-4	4	The Wraps
8	540313-14	4	Hose Assembly, #6 X 14 LG.	20	540313-16	2	Hose Assembly, #6 X 13 LG.
9	T21-1	2	Bearing, Spherical	21	T20-1	2	Bearing, DU
10	585177-2	2	Hyd. Cylinder, 2 1/2 Bore	22		10	Screw, Hex. HD. Cap, 5/16 18 UNC X 2 LG.
11	540274-15	2	Pin, 7/8 X 3 1/4 LG.	23	K10-5	14	Nut, Elastic Stop, 5/16 - 18 UNC
12	540313-15	4	Hose Assembly, #6 X 21 LG.	24		4	Screw, Hex. HD. Cap, 5/16 - 18 UNC X 2 1/2 LG.

**BLADE ASSEMBLY
DOZER
S/N DC30-0501 AND UP**

Item No.	Part No.	DC-30 Qty.	Description	Item No.	Part No.	DC-30 Qty.	Description
25	580366-1	1	Cutting Edge	37	580625-22	1	Tube Assembly
26		11	Plow Bolt, #3 HD., 7/16 - 14 UNC X 1 1/4 LG.	38	580625-21	1	Tube Assembly
27	540274-13	2	Pin, 1 1/4 X. 3 1/4 LG.	39	540313-18	2	Hose Assembly, #6 X 18 LG.
28	585210-1	1	Hyd. Cylinder, 2" Bore	40	271287	10	Grease Fitting, 1/4 - 28 UNF (not shown)
29	540274-14	2	Pin, 7/8 X 4 1/4 LG.	41	A52-6	2	Tee, 9/16 JIC/9/16 JIC/9/16 JIC Female
30	540274-16	2	Pin, 7/8 X. 2 3/4 LG.	42	A11-6	2	Elbow, 45°, 9/16 JIC/9/16 ORB
31	580623-22	1	Tube Assembly	43	580466-21	2	Pin Assembly, Dozer
32	580623-21	1	Tube Assembly	44	K10-7	11	Nut, Elastic Stop, 7/16-14 UNC
33	K10-4	5	Nut, Elastic Stop, 1/4-20 UNC	45	585245-21	1	Kit, Seal
34	540313-19	3	Hose Assembly, #6 X 16 LG.	46	585074-22	1	Kit, Seal
35	576119-2	5	Clamp, Hose (Dual)	47	K10-6	1	Nut, Elastic STop, 3/8-16 UNC
36	540313-20	1	Hose Assembly, #6 X 10 LG.				

**LIFT CYLINDER
DOZER
S/N DC30-0501 AND UP**

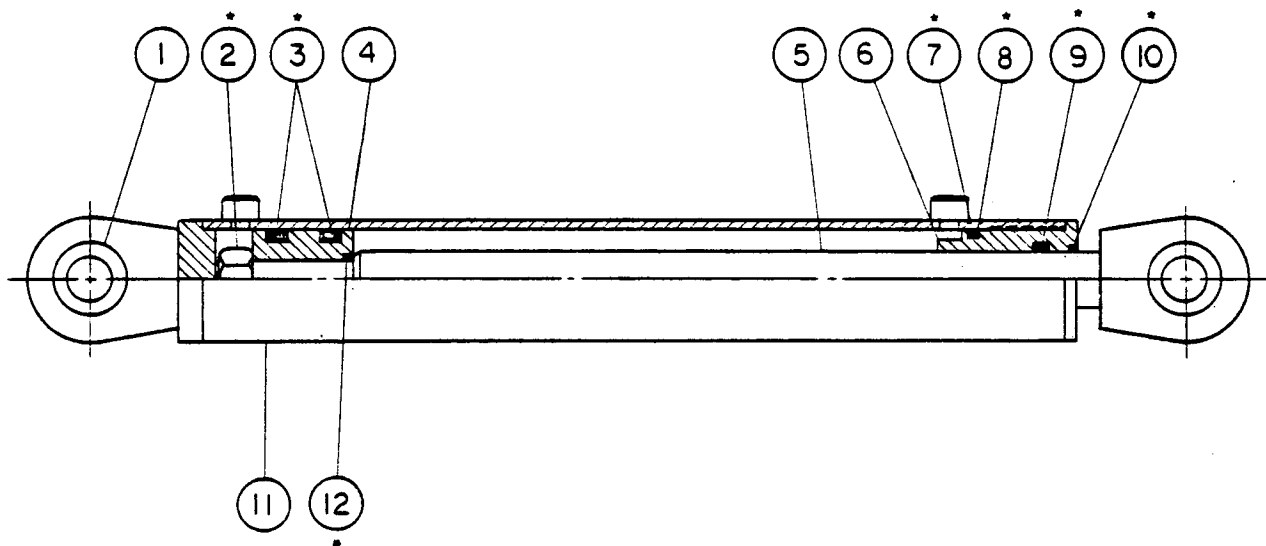


Item No.	Part No.	DC-30 Qty.	Description
1	T21-2	2	Spherical Bearing
*2		1	Nut, 3/4-16UNF, Lock
*3	N14-1	2	Seal - Piston
4	585262-1	1	Piston
5	585267-1	1	Rod
6	585258-1	1	Head

Item No.	Part No.	DC-30 Qty.	Description
*7	N10-228	1	O-Ring, Head
*8	N13-228	1	Back Up Washer, Head
*9	N15-2	1	Seal - Rod
*10	N16-13	1	Wiper - Rod
11	585177	1	Shell
*12	N10-018	1	O-Ring

*585245-21 Seal Kit

**ANGLE CYLINDER
DOZER
S/N DC30-0501 AND UP**

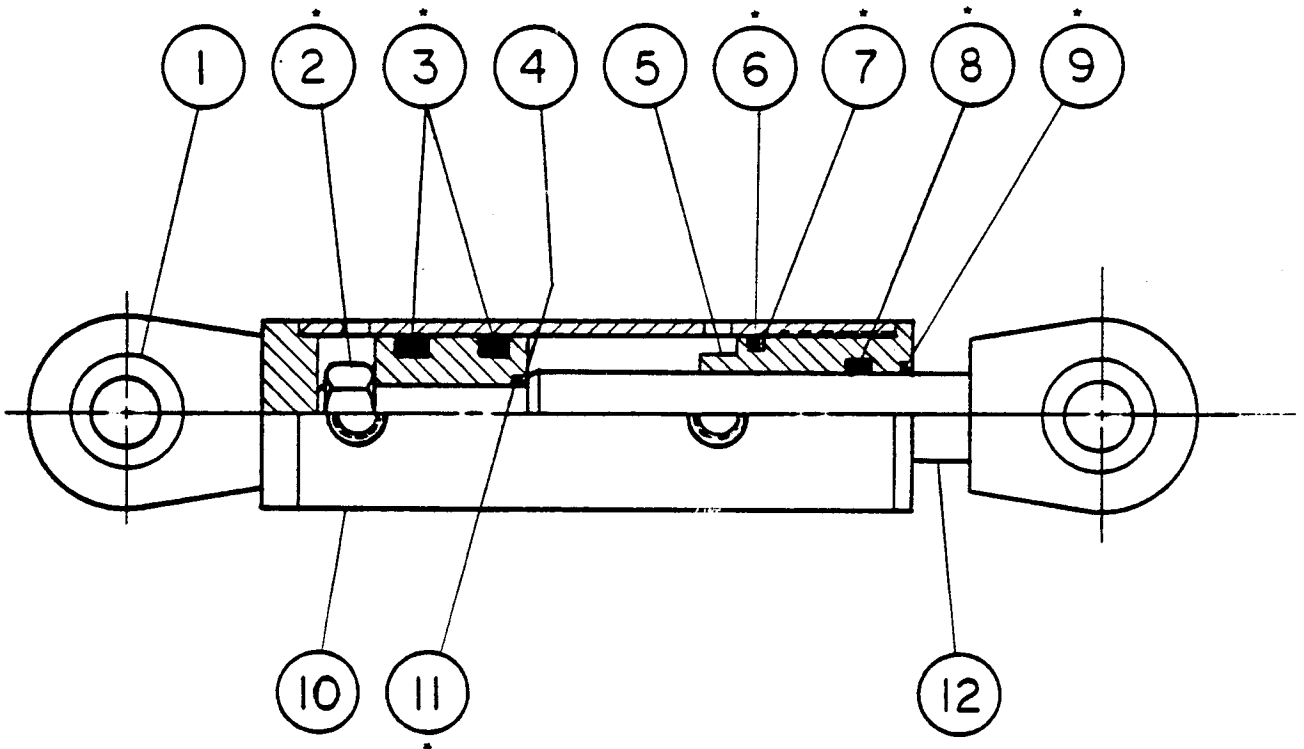


Item No.	Part No.	DC-30 Qty.	Description
1	T21-2	2	Spherical Bearing
*2		1	Nut, 3/4-16UNF, Lock
*3	N15-2	2	Seal - Piston
4	585263-1	1	Piston
5	585268-1	1	Rod
6	585259-1	1	Head

Item No.	Part No.	DC-30 Qty.	Description
*7	N10-224	1	O-Ring, Head
*8	N13-224	1	Back-Up Ring, Head
*9	N15-1	1	Seal - Rod
*10	N16-11	1	Wiper - Rod
11	585210	1	Shell
*12	N10-18	1	O-Ring

*585074-22 Seal Kit

**TILT CYLINDER
DOZER
S/N DC30-0501 AND UP**



Item No.	Part No.	DC-30 Qty.	Description
1	T21-2	2	Spherical Brg.
*2		1	Nut, 3/4-16UNF Lock
*3	N15-2	2	Seal, Piston
4	585263-1	1	Piston
5	585259-1	1	Head
*6	N10-224	1	O-Ring, Head

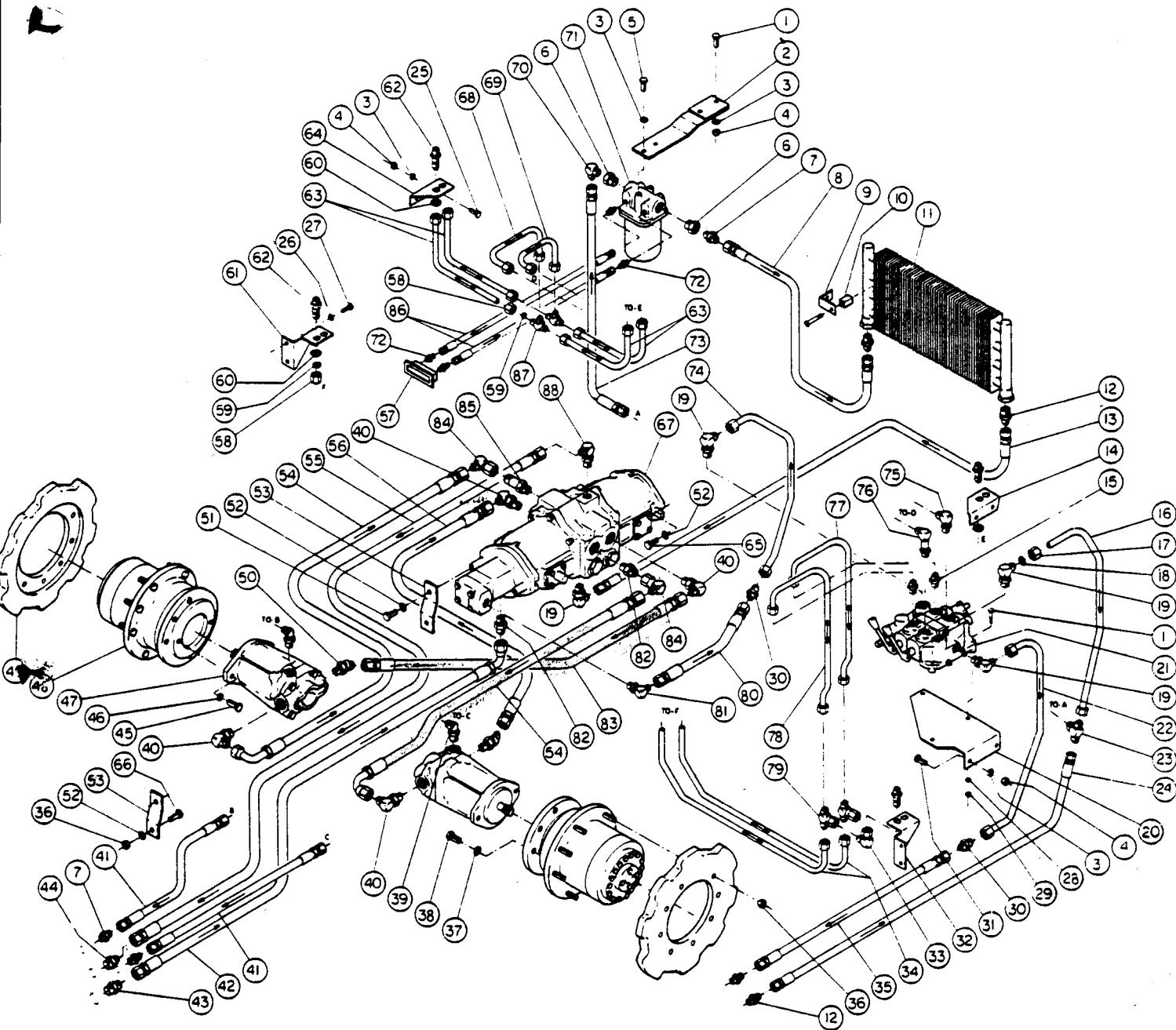
Item No.	Part No.	DC-30 Qty.	Description
*7	N13-224	1	Back Up Ring, Head
*8	N15-1	1	Seal, Rod
*9	N16-11	1	Wiper, Rod
10	585210	1	Shell
*11	N10-18	1	O-Ring
12	585269-1	1	Rod

*585074-22 Seal Kit

HYDRAULICS AND HYDROSTATIC PROPULSION SYSTEM

LOADER

S/N LC30-0001 THRU LC30-0029



Item No.	Part No.	LC-30 Qty.	Description
1		4	Bolt, Hex. Cap 1/4"-20NC x 1 1/2"
2	580188	1	Bracket, Hydraulic Oil Filter
3		10	Washer, Lock 3/8"
4		8	Nut, Hex 3/8"-16NC
5		2	Bolt, Hex. Cap 3/8"-16NC x 1"
6	B10-12	2	Bushing, Pipe Reducing 1" x 1/2"
7	A13-52	3	Adapter, Straight #10 JIC x #8 NPT
8	540251-31	1	Hose Assembly, #8 Hydraulic x 59"
9	540283-2	2	Bracket, Oil Cooler Mounting
10	585062	1	Kit, Oil Cooler Mounting
11	585061	1	Cooler, Pump Oil
12	A13-62	4	Adapter, Straight #10 JIC x #12 NPT
13	540251-28	1	Hose Assembly, #8 Hydraulic x 53"
14	580213-2	1	Bracket, Tube Top (R.H.)
15	A19-8	3	Adapter, #8 JIC x #8 ORB
16	585045	1	Tube, Valve Return

Item No.	Part No.	LC-30 Qty.	Description
17	A54-10	6	Nut, Tube #10
18	A55-10	6	Ferrule, Tube #10
19	A18-10	4	Elbow 90°, #10 JIC x #10 ORB
20	580212	1	Bracket, Valve Mount
21	585010	1	Valve, Control
22	585044	1	Tube, Power Beyond
23	A12-10	1	Tee, #10 JIC 37°
24	540251-26	1	Hose Assembly, #8 Hydraulic x 33"
25		4	Bolt, Hex. Cap 3/8"-16NC x 1"
26		4	Washer, Lock 5/16"
27		4	Bolt, Hex. Cap 5/16"-18NC x 3/8"
28		3	Washer, Lock 1/2"
29		3	Nut, Hex 1/4"-20NC
30	A50-10	2	Adapter, #10 JIC to #10 JIC-STR.
31		2	Bolt, Hex. Cap 3/8"-16NC x 1"
32	580214-1	1	Bracket, Tube Bottom (R.H.)

*Indicate "O" ring size for "O" ring fittings.

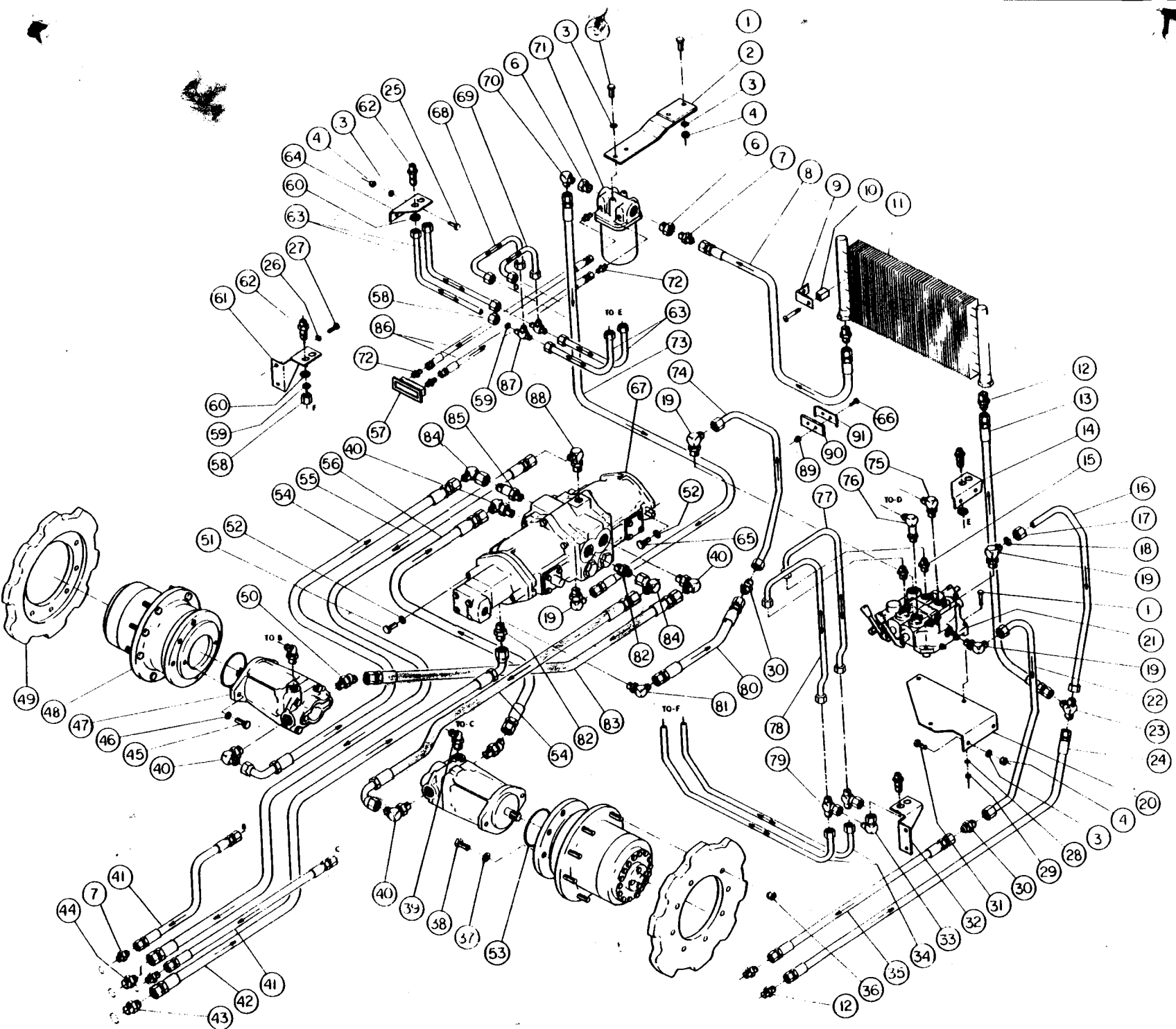
**HYDRAULICS AND HYDROSTATIC
PROPULSION SYSTEM
LOADER
S/N LC30-0001 THRU LC30-0029**

Item No.	Part No.	LC-30 Qty.	Description	Item No.	Part No.	LC-30 Qty.	Description
33	A51-8	3	Elbow 90°, #8 JIC x #8 JIC SW.	62	A41-8	10	Fitting, Bulkhead #8 JIC
34	585143	2	Tube, Branch	63	585050	4	Tube, Branch-Upper
35	540251-27	1	Hose Assembly, #8 Hydraulic x 30"	64	580213-1	1	Bracket, Tube Top (L.H.)
36		20	Nut, Hex ½"-20NF	65		2	Bolt, Hex. Cap ½-13NC x 1½"
37		12	Washer, Lock ¾"	66		2	Bolt, Hex. Cap ½-20NF x 1¼"
38		12	Bolt, Hex. Cap ¾"-11NC x 1½"	67	585007	1	Pump, Main Hydraulic
39	A11-10	2	Elbow 45°, #10 JIC x #10 ORB	68	585049	1	Tube, Workport-Rear
40	A18-16	4	Elbow 90°, #16 JIC x #16 ORB	69	585048	1	Tube, Workport-Front
41	540251-30	2	Hose Assembly, #8 Hydraulic x 11½"	70	A14-54	5	Elbow 90°, #10 JIC x #8 NPT
42	540262-2	1	Hose Assembly (suction) #16 Hydraulic x 17½"	71	585076	1	Filter, Hydraulic Oil
43	A13-16	1	Adapter, #16 JIC x #16 NPT	72	A13-51	4	Adapter, #4 JIC x #2 NPT
44	A13-12	1	Adapter, #12 JIC x #12 NPT	73	540251-35	1	Hose Assembly, #8 Hydraulic x 64"
45		4	Bolt, Hex. Cap ½-13NC x 1½"	74	585047	1	Tube, Valve Inlet
46		4	Washer, Lock-Heavy ½"	75	A18-8	1	Elbow 90°, #8 JIC x #8 ORB
47	585008	2	Motor, Main Hydraulic	76	A28-8	1	Elbow 90°, #8 JIC x #8 STR. LG.
48	585009	2	Hub, Torque	77	585141	1	Tube, Workport-Front
49	580061	2	Sprocket, Drive	78	585142	1	Tube, Workport-Rear
50	A11-16	2	Elbow 45°, #16 JIC x #16 ORB	79	A52-8	2	Tee #8 JIC RUN x #8 JIC SW. BR.
51		2	Bolt, Hex. Cap ½-13NC x 1"	80	540251-29	1	Hose Assembly, #8 Hydraulic x 32
52		4	Washer, Lock Med. ½"	81	A18-62	1	Elbow 90°, #10 JIC x #8 ORB
53	580217	2	Strap, Pump Support	82	A19-16	2	Adapter, #16 JIC x #16 ORB
54	540262-3	2	Hose Assembly, #16 HYD. RH & LH RETURN x 28"	83	540251-38	1	Hose Assembly, #16 Hydraulic x 27"
55	540251-25	1	Hose Assembly, #12 Hydraulic x 29"	84	A51-16	2	Elbow 90°, #16 JIC x #16 JIC SW
56	540251-37	1	Hose Assembly, #16 Hydraulic x 23"	85	A41-16	1	Fitting, Bulkhead #16 JIC x #16 JIC
57	585059	1	Indicator, Remote Oil Condition	86	540251-36	2	Hose Assembly, #4 Hydraulic x 22"
58	A54-8	24	Nut, Tube #8	87	A12-8	2	Tee, #8 JIC 37°
59	A55-8	24	Ferrule, Tube #8	88	A18-12	1	Elbow 90°, #12 JIC x #12 ORB
60	A74-8	10	Nut, Bulkhead Fitting-Lock	.	N11-8		"O" Ring, #8
61	580214-2	1	Bracket, Tube Bottom (L.H.)	.	N11-10		"O" Ring, #10
				.	N11-12		"O" Ring, #12
				.	N11-16		"O" Ring, #16

*Indicate "O" ring size for "O" ring fittings.

HYDRAULICS AND HYDROSTATIC
PROPULSION SYSTEM
LOADER

S/N LC30-0030 THRU LC30-0085

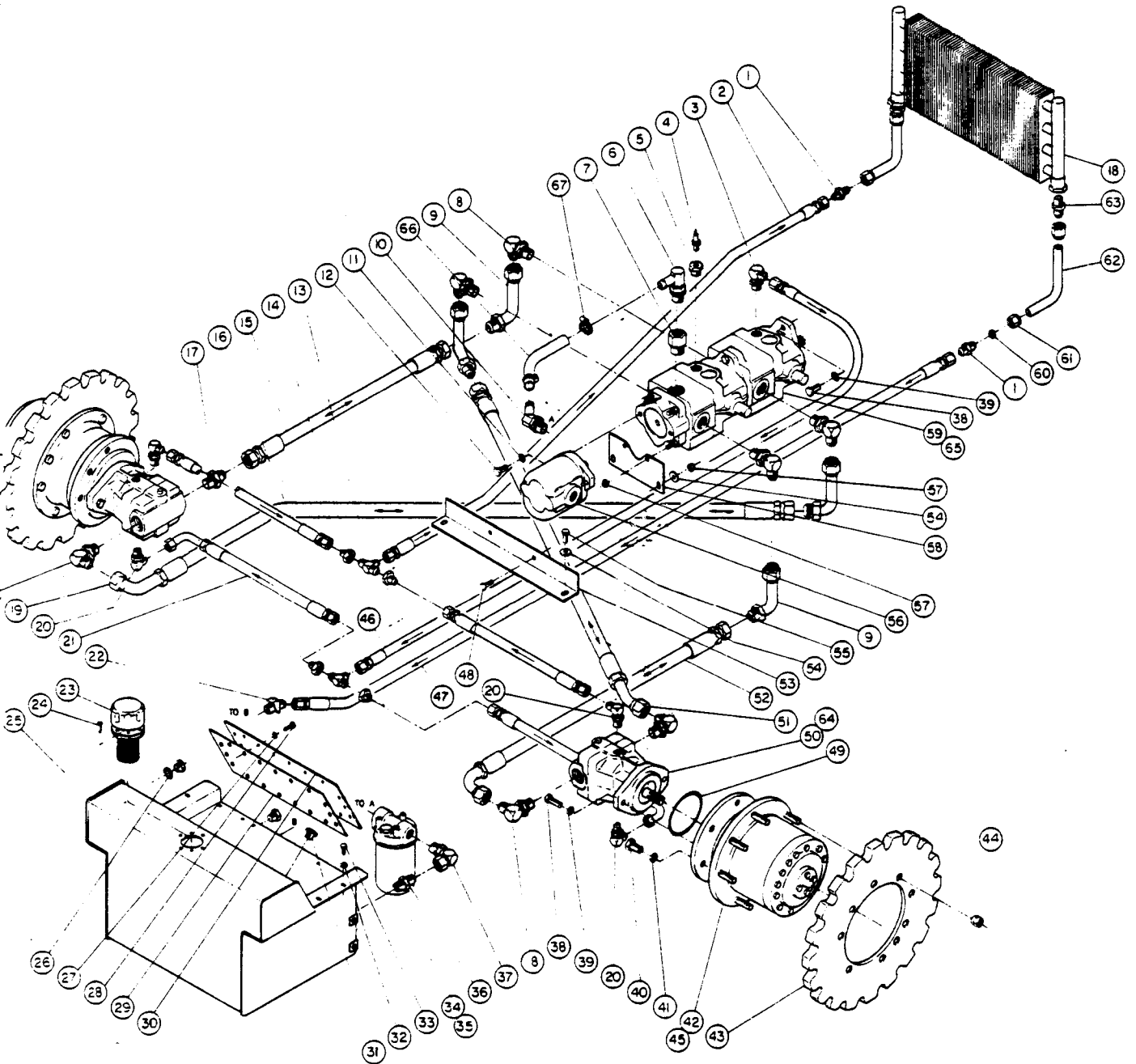


**HYDRAULICS AND HYDROSTATIC
PROPULSION SYSTEM
LOADER
S/N LC30-0030 THRU LC30-0085**

Item No.	Part No.	LC-30 Qty.	Description	Item No.	Part No.	LC-30 Qty.	Description
1		4	Bolt, Hex Cap 1/4"-20NC x 1 1/2"	55	540251-25	1	Hose Assembly, #12 Hydraulic x 29"
2	580188	1	Bracket, Hydraulic Oil Filter	56	540251-37	1	Hose Assembly, #16 Hydraulic x 23"
3		10	Washer, Lock 3/8"	57	585059	1	Indicator, Remote Oil Condition
4		8	Nut, Hex 3/8"-16NC	58	A54-8	24	Nut, Tube #8
5		2	Bolt, Hex Cap 3/8"-16NC x 1"	59	A55-8	24	Ferrule, Tube #8
6	B10-12	2	Bushing, Pipe Reducing 1" x 1/2"	60	A74-8	10	Nut, Bulkhead Fitting-Lock
7	A13-52	3	Adapter, Straight #10 JIC x #8 NPT	61	580214-2	1	Bracket, Tube Bottom (L.H.)
8	540251-31	1	Hose Assembly, #8 Hydraulic x 60 1/2"	62	A41-8	10	Fitting, Bulkhead #8 JIC
9	540283-2	2	Bracket, Oil Cooler Mounting	63	585050	4	Tube, Branch-Upper
10	585062	1	Kit, Oil Cooler Mounting	64	580213	1	Bracket, Tube Top (L.H.)
11	505061	1	Cooler, Pump Oil	65		2	Bolt, Hex Cap 1/2"-13NC x 1 1/2"
12	A13-62	4	Adapter, Straight #10 JIC x #12 NPT	66		2	Bolt, Hex Cap 1/2"-20NC x 1 1/2 Lg.
13	540251-28	1	Hose Assembly, #8 Hydraulic x 51 1/2"	67	585007	1	Pump, Main Hydraulic
14	580213-2	1	Bracket, Tube Top (R.H.)	68	585049	1	Tube, Workport-Rear
15*	A19-8	3	Adapter, #8 JIC x #8 ORB	69	585048	1	Tube, Workport-Front
16	585045	1	Tube, Valve Return	70	A14-54	5	Elbow 90°, #10 JIC x #8 NPT
17	A54-10	6	Nut, Tube #10	71	585076	1	Filter, Hydraulic Oil
18	A55-10	6	Ferrule, Tube #10	72	A13-51	4	Adapter, #4 JIC x #2 NPT
19*	A18-10	4	Elbow 90°, #10 JIC x #10 ORB	73	540251-35	1	Hose Assembly, #8 Hydraulic x 74 1/2"
20	580212	1	Bracket, Valve Mount	74	585047	1	Tube, Valve Inlet
21	585010	1	Valve, Control	75*	A18-8	1	Elbow 90°, #8 JIC x #8 ORB
22	585044	1	Tube, Power Beyond	76*	A28-8	1	Elbow 90°, #8 JIC x #8 STR. Lg.
23	A12-10	1	Tee, #10 JIC 37°	77	585141	1	Tube, Workport-Front
24	540251-26	1	Hose Assembly, #8 Hydraulic x 36"	78	585142	1	Tube, Workport-Rear
25		4	Bolt, Hex Cap 3/8"-16NC x 1"	79	A52-8	2	Tee #8 JIC RUN x #8 JIC SW. BR.
26		4	Washer, Lock 3/8"	80	540251-29	1	Hose Assembly, #8 Hydraulic x 18 1/2"
27		4	Bolt, Hex Cap 3/8"-18NC x 3/8"	81*	A18-62	1	Elbow 90°, #10 JIC x #8 ORB
28		3	Washer, Lock 1/4"	82*	A19-16	2	Adapter, #16 JIC x #16 ORB
29		3	Nut, Hex 1/4"-20NC	83	540251-38	1	Hose Assembly, #16 Hydraulic x 27"
30	A50-10	2	Adapter, #10 JIC to #10 JIC-STR	84	A51-16	2	Elbow 90°, #16 JIC x #16 JIC SW
31		2	Bolt, Hex Cap 3/8"-16NC x 1"	85*	A41-16	1	Fitting, Bulkhead #16 JIC x #16 JIC
32	580214-1	1	Bracket, Tube Bottom (R.H.)	86	540251-36	2	Hose Assembly, #4 Hydraulic x 22"
33	A51-8	3	Elbow 90° JIC x #8 JIC SW	87	A12-8	2	Tee, #8 JIC 37°
34	585143	2	Tube, Branch	88*	A18-12	1	Elbow 90°, #12 JIC x #12 ORB
35	540251-27	1	Hose Assembly, #8 Hydraulic x 34"	*	N11-8		"O" Ring, #8
36	585086-1	18	Nut, 1/2"-20NF Lug, 60° Face	*	N11-10		"O" Ring, #10
37		12	Washer, Lock 3/8"	*	N11-12		"O" Ring, #12
38		12	Bolt, Hex Cap 3/8"-11NC x 1 1/2"	*	N11-16		"O" Ring, #16
39*	A11-10	2	Elbow 45°, #10 JIC x #10 ORB	89	K10-4	2	Nut, ESNA 1/4-Zone
40*	A18-16	4	Elbow 90°, #16 JIC x #16 ORB	90	580216	1	Pad
41	540251-30	2	Hose Assembly, #8 Hydraulic x 13	91	580215	1	Clamp Bar
42	540262-2	1	Hose Assembly, (suction) #16 Hydraulic x 15 3/4"				
43	A13-16	1	Adapter, #16 JIC x #16 NPT				
44	A13-12	1	Adapter, #12 JIC x #12 NPT				
45		4	Bolt, Hex Cap 1/2"-13NC x 1 1/2"				
46		4	Washer, Lock-Heavy 1/2"				
47	585008	2	Motor, Main Hydraulic				
48	585009	2	Hub, Torque				
49	580061	2	Sprocket, Drive				
50	A11-16	2	Elbow 45°, #16 JIC x #16 ORB				
51		2	Bolt, Hex Cap 1/2"-13NC x 1"				
52		4	Washer, Lock Med. 1/2"				
53	N10-45	2	"O" Ring				
54	540262-3	2	Hose Assembly, #16 HYD. RH & LH Return x 29"				

*Indicate "O" ring size for "O" ring fittings.

**HYDROSTATIC PROPULSION
LOADER & DOZER
S/N LC30-0086 AND UP
S/N DC30-0501 AND UP**

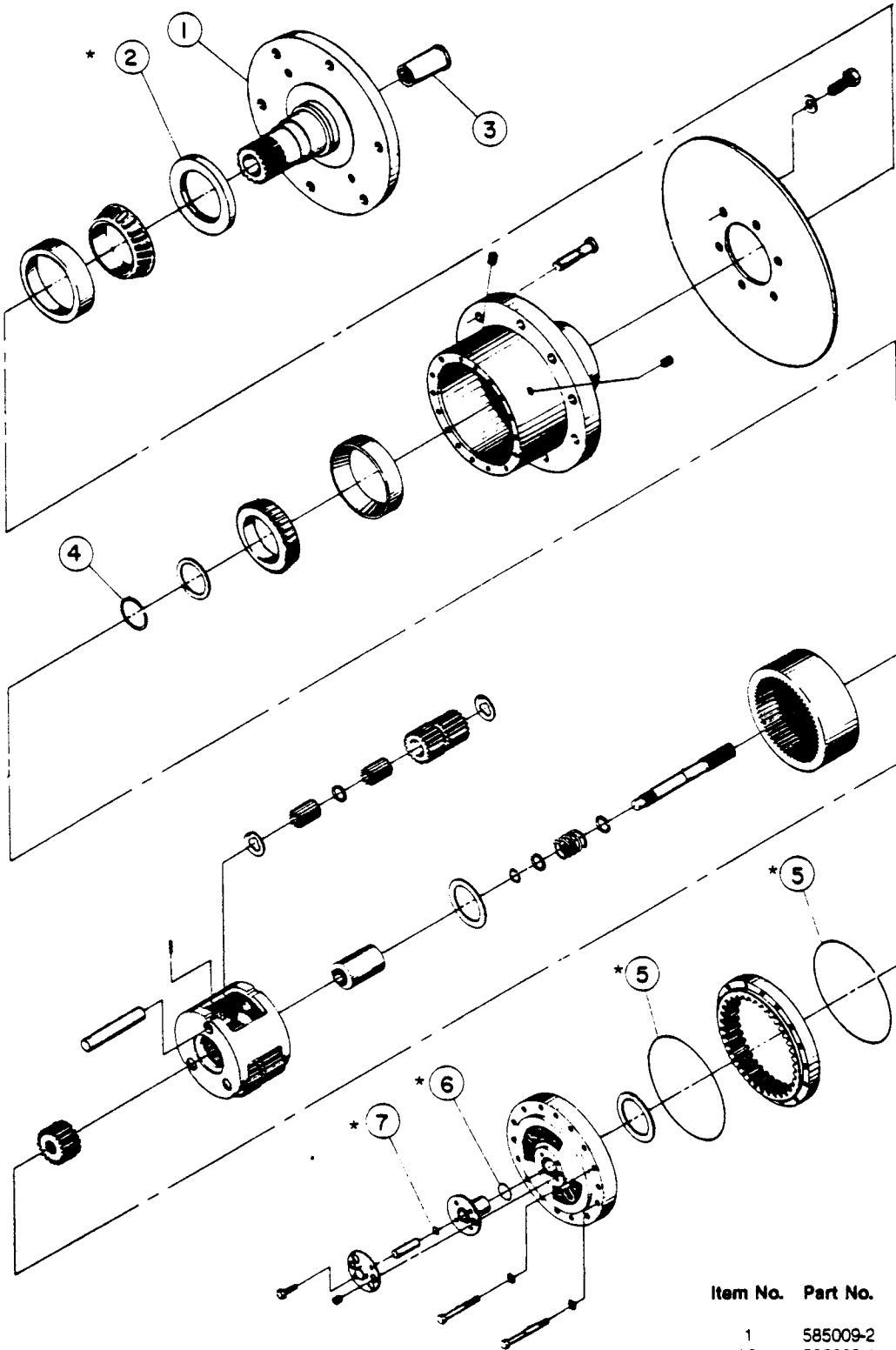


**HYDROSTATIC PROPULSION
LOADER & DOZER
S/N LC30-0086 AND UP
S/N DC30-0501 AND UP**

Item No.	Part No.	LC-30 Qty.	DC-30 Qty.	Description	Item No.	Part No.	LC-30 Qty.	DC-30 Qty.	Description
1	A50-12	2	2	Adapter, 1-1/16 JIC/1-1/16 JIC	34	585207-2	1	1	Filter, Hyd. Oil
2	540313-8	1	1	Hose Assembly, #12 X 54 LG.	35	R10-2	1	1	Filter Element, Oil
3	A18-12	1	1	Elbow, 90°, 1-1/16 JIC/1-1/16 ORB	36	A32-12	1	1	Connector, ¼ NPT/¼ NPT
4	585213-1	1	1	Temperature, Sender	*37	A94-12	1	1	Elbow 90°, ¼ NPT
5	580663-1	1	1	Adapter, Temp. Sender					Swivel/1-1/16 ORB
*6	A40-12	1	1	Elbow, 90°, 1-1/16 ORB X ¾ Hose	38		6	6	Screw, Hex. HD. Cap. ½-13 UNC X 1½ LG.
*7	A102-56	1	1	Reducer, 1-1/16 ORB X 15/16 ORB	39		6	6	Washer, Split Lock, ½
8	A18-16	7	8	Elbow 90°, 1-5/16 JIC/1-5/16 ORB	40		16	16	Screw, Hex. HD. Cap. 5/8-11 UNC X 1½ LG.
9	A105-16	4	4	Elbow, Bent Stem 90°, 1-5/16 JIC	41		16	16	Washer, Split Lock, 5/8
*10	A39-12	1	1	Elbow, 45°, 1-1/16 ORB X ¾ Hose	42	585184-1	2	2	Hub, Torque 30.06:1
11		2	2	Washer, Split Lock, 3/8	43	580414-1	2	2	Sprocket, Drive
12		2	2	Screw, Hex. HD. Cap. 3/8-16 UNC X 1 LG.	44	585086-1	18	18	Nut, Lug, 60°
13	A12-12	2	2	Tee, 1-1/16 JIC	45	585009-54	1	1	Spindle Kit
14	A77-40	4	4	Reducer, 1-1/16 JIC/3/4 JIC	46	540313-11	1	1	Hose Assembly, #12 X 32 LG.
15	585243-21	1		Hose Assembly, H.P., #16 X 18 LG.	47	540313-12	1	1	Hose Assembly, #12 X 68 LG.
	585273-21		1	Hose Assembly, H.P., #16 X 18 LG.	48		2	2	Screw, Hex. HD. Cap. 5/16-18 UNC X 1½ LG.
16	540313-10	2		Hose Assembly, #8 X 10 LG.	49	N10-45	2	2	"O" Ring
	540313-13		2	Hose Assembly, #8 X 13 LG.	50	585189-1	2	2	Hydrostatic Motor
*17	A19-16	1		Connector, 1-5/16 JIC/1-5/16 ORB	51	585242-21	1		Hose Assembly, H.P., #16 X 13 LG.
18	585061-1	1	1	Oil Cooler		585241-21		1	Hose Assembly, H.P., #16 X 16 LG.
19	585237-21	1		Hose Assembly, H.P., #16 X 28 LG.	52	585238-21	1		Hose Assembly, H.P., #16 X 17 LG.
	585239-21		1	Hose Assembly, H.P., #16 X 30 LG.		585240-21		1	Hose Assembly, H.P., #16 X 17 LG.
*20	A18-8	4	4	Elbow 90°, ¾ JIC/¾ ORB	53	580417-1	1	1	Mount, Trans. Lower
21	540314-4	2		Hose Assembly, #8 X 15 LG.	54		4	4	Washer, Split Lock, 3/8
	540314-5		2	Hose Assembly, #8 X 18 LG.	55		2	2	Screw, Hex. HD. Cap. 3/8-16 UNC X 1 LG.
22	A15-12	1	1	Elbow 45°, ¼ NPT/ 1-1/16 JIC	56	585188-1	1	1	Auxiliary Pump
23	585018	1	1	Filler, Breather Filter	57	K10-5	4	4	Nut, Elastic Stop, 5/16-18 UNC
24		6	6	Screw, Machine, #10-24 UNC	58	580416-1	1	1	Mount, Trans. Upper
25	580406-21	1	1	Hydraulic Tank	59	585187-1	1	1	Hydrostatic Pump
26	585229-1	1	1	Plug, Liquid Level Sight	60	A55-12	4	4	Ferrule, Tube ¾
27		18	18	Lockwasher, ¼	61	A54-12	4	4	Nut, Tube, ¾
28		18	18	Screw, Hex. HD. Cap. ¼-20 UNC X 5/8 LG.	62	580462-1	2	2	Tube, Cooler Extension
29	585218-1	1	1	Gasket, Reservoir	63	A13-12	2	2	Adapter, Str. ¼ NPT/1-1/16 JIC
30	580412-1	1	1	Cover, Reservoir	64	585189-51	1	1	Seal Kit, Motor
31	A53-12	2	2	Plug, Pipe, ¼ NPT	65	585187-51	1	1	Seal Kit, Pump
32		10	10	Washer, Flat, 5/16 Small	66	585271-1	1	1	Hose, Suction, #12 X 10 LG.
33		8	8	Screw, Hex. HD. Cap. 5/16-18 UNC X ¾ LG.	67	L10-9	2	2	Hose Clamp
					*	N11-8			O-Ring, #8
					*	N11-12			O-Ring, #12
					*	N11-16			O-Ring, #16

*Indicates O-Ring Size for O-Ring Fittings

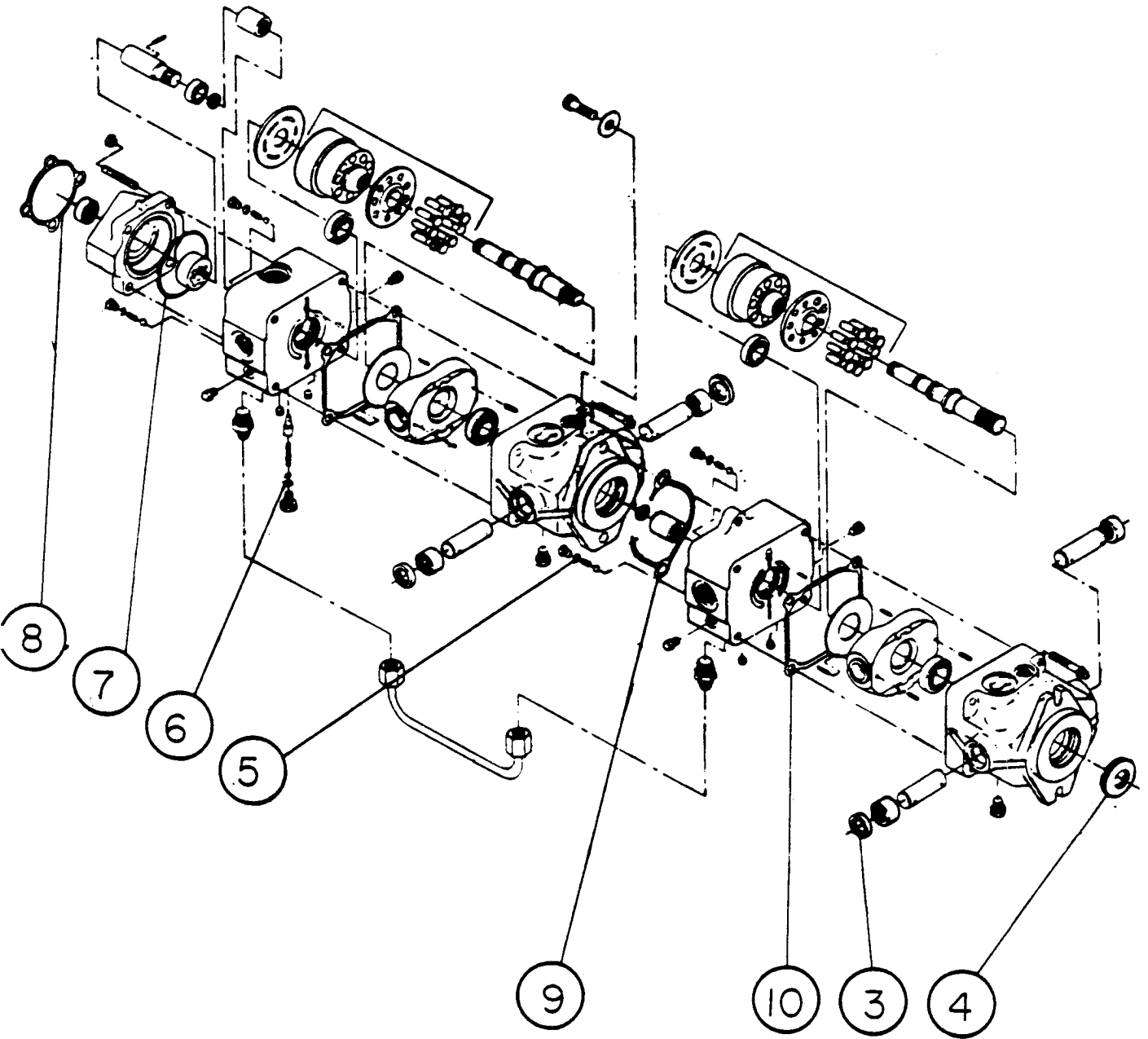
**TORQUE HUBS SPINDLE KIT
 LOADER & DOZER
 S/N LC30-0086 AND UP
 S/N DC30-0501 AND UP**



Item No.	Part No.	LC-30 DC-30 Qty.	Description
1	585009-2	1	Spindle
*2	585009-4	1	Seal
3	585009-3	1	Coupling
4	585009-5	1	Retaining Ring
*5	589009-52	2	O-Ring
*6	585009-6	1	O-Ring
*7	585009-7	1	O-Ring

*585009-55 Seal Kit

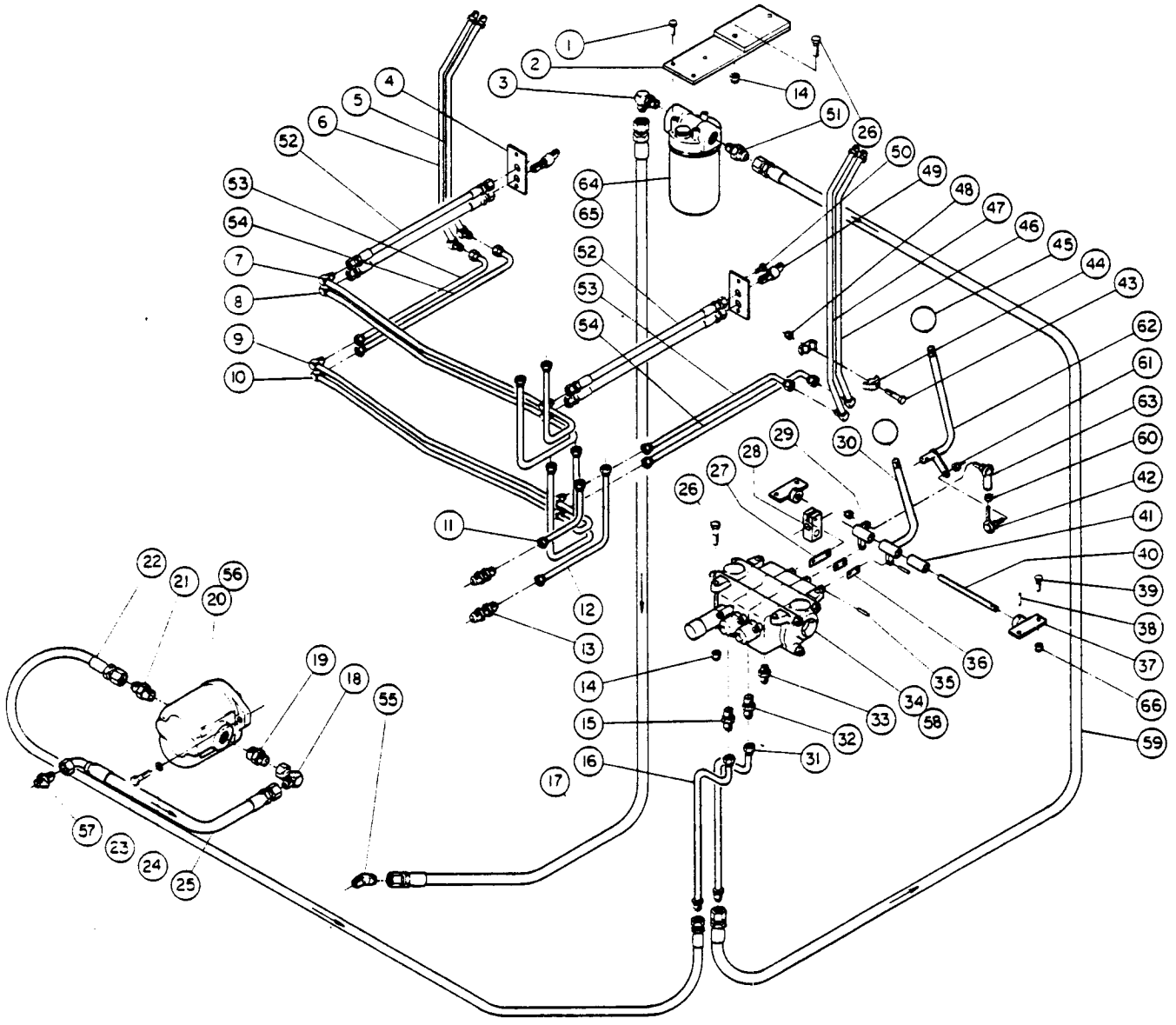
**HYDROSTATIC PUMP
(SUNDSTRAND 18 SERIES)
LOADER & DOZER
S/N LC30-0086 AND UP
S/N DC30-0501 AND UP**



Item No.	Part No.	LC-30 DC-30	
		Qty.	Description
3	585187-53	4	Seal-Lip
4	585187-54	1	Seal-Lip
5	585187-55	4	O-Ring
6	585187-56	1	O-Ring

Item No.	Part No.	LC-30 DC-30	
		Qty.	Description
7	585187-57	1	O-Ring
8	585187-58	1	Gasket
9	585187-59	1	Gasket
10	585187-60	2	Gasket

AUXILIARY HYDRAULICS LOADER S/N LC30-0086 AND UP



Item No.	Part No.	LC-30 Qty.	Description
1		3	Screw, Hex. HD, Cap, 5/16-18 UNC X 3/4 LG.
2	580450-21	1	Bracket, Filter Mount
*3	A18-12	1	Elbow 90°, 1-1/16 JIC X 1-1/16 ORB
4	580628-2	2	Cover Plate
5	580603-21	1	Tube Assembly
6	580603-22	1	Tube Assembly
7	580602-21	1	Tube Assembly
8	580602-22	1	Tube Assembly
9	580602-23	1	Tube Assembly
10	580602-24	1	Tube Assembly
11	580633-21	1	Tube Assembly
12	580608-22	1	Tube Assembly
13	A41-8	2	Connector, Bulkhead, 3/4 JIC
14	K10-6	5	Nut, Elastic Stop, 3/8-16 UNC
*15	A19-57	1	Adapter, 3/4 JIC/7/8 ORB
16	580606-21	1	Tube Assembly
17	540313-5	1	Hose Assembly, #12 X 90 LG.
18	A51-12	1	Elbow, 90°, 1-1/16 JIC/1-1/16 JIC Swivel

Item No.	Part No.	LC-30 Qty.	Description
19	A13-12	1	Adapter, 3/4 NPT/1-1/16 JIC
20	585188-1	1	Auxiliary Pump
21	A13-58	1	Adapter, 3/4 NPT/3/4 JIC
22	540313-7	1	Hose Assembly, #8 X 36 LG.
23		2	Screw, Hex. HD, Cap, 3/8-16 UNC X 1 LG.
24		2	Washer, Split Lock, 3/8
25	540317-2	1	Hose Assembly, #12 X 15 LG.
26		5	Screw, Hex. HD, Cap, 3/8-16 UNC X 1 1/2 LG.
27	580476-4	1	Link
28	580475-1	1	Block
29	580474-21	1	Pivot, Link
30	580478-21	1	Lever
31	580607-21	1	Tube Assembly
*32	A19-10	1	Adapter, 7/8 JIC/7/8 ORB
*33	A19-8	6	Adapter, 3/4 JIC/3/4 ORB
34	585227-21	1	Hyd. Control Valve 3 Spool
35		7	Roll Pin, Spring .187 X 1.000 LG.
36	580476-3	2	Link

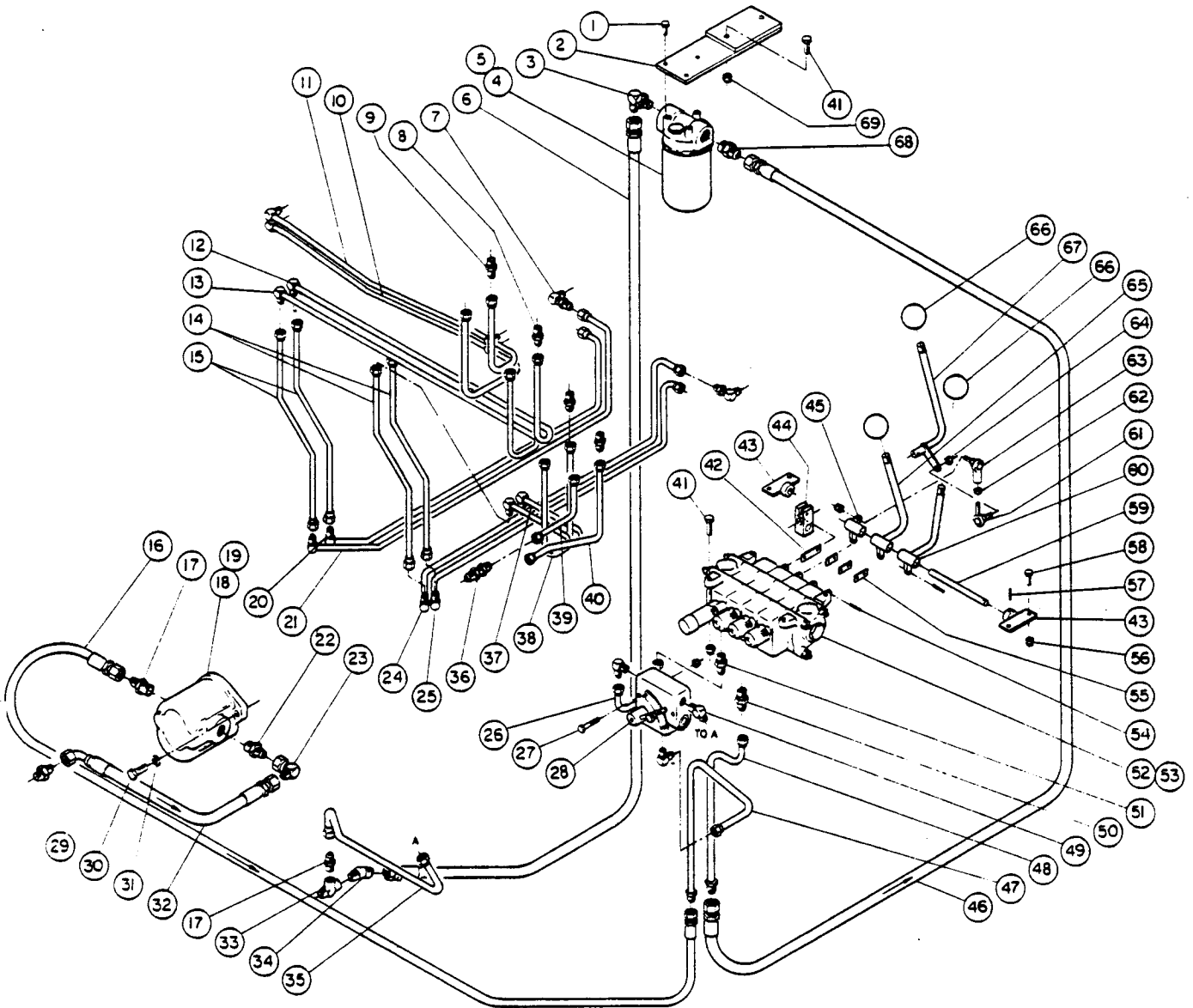
**AUXILIARY HYDRAULICS
LOADER
S/N LC30-0086 AND UP**

Item No.	Part No.	LC-30 Qty.	Description
37	580701-21	2	Mount, Valve Linkage
38		1	Roll Pin, Spring, 1/2125 X 1.000 LG.
39		4	Screw, Hex. HD. Cap, 1/4-20 UNC X 1 LG.
40	580477-1	1	Pin
41	580474-1	1	Tube
42	585232-1	1	Ball Joint, Male
43		4	Screw, Hex. HD. Cap, 5/16-18 UNC X 2 LG.
44	576119-3	4	Clamp, Hose (Dual)
45	642034	2	Ball Grip
46	580604-21	1	Tube Assembly
47	580604-22	1	Tube Assembly
48	K10-5	4	Nut, Elastic Stop, 5/16-18 UNC
49	A42-8	4	Elbow 45°, Bulkhead 3/4 JIC
50		4	Screw, Hex. HD. Cap, 1/4-20 UNC X 1/2 LG.
*51	A19-61	1	Adapter, 7/8 JIC/1-1/16 ORB
52	540313-21	4	Hose Assembly #8-21 LG.
53	580608-23	2	Tube Assembly

Item No.	Part No.	LC-30 Qty.	Description
54	580608-24	2	Tube Assembly
55	A15-12	1	Elbow, 45°, 3/4 NPT/1-1/16 JIC
56	585247-21	1	Kit, Auxiliary Hyd. Pump
57	A13-12	1	Adapter, 3/4 NPT/1-1/16 JIC
58	585248-21	1	Kit, Hyd. Control Valve
59	540313-4	1	Hose Assembly, #12 X 100 LG.
60		1	Nut, Jam, 5/16-24 UNF
61	627111-13	2	Nut, Elastic Stop, 5/16-24 UNF
62	580479-21	1	Lever
63	585233-1	1	Ball Joint, Female
64	585207-2	1	Filter, Auxiliary
65	R10-2		Element, Filter
66	K10-4	4	Nut, Elastic Stop, 1/4-20 UNC
*	N11-8		O-Ring #8
*	N11-10		O-Ring #10
*	N11-12		O-Ring #12

*Indicates O-Ring Size for O-Ring Future

AUXILIARY HYDRAULICS DOZER S/N DC30-0501 AND UP



Item No.	Part No.	DC-30 Qty.	Description
1		3	Screw, Hex. HD. Cap, 5/16-18 UNC X 3/4 LG.
2	580450-21	1	Bracket, Filter Mount
*3	A-18-12	1	Elbow, 90°, 1-1/16 JIC/1-1/16 ORB
4	585207-2	1	Filter, Aux.
5	R10-2	1	Element, Filter
6	540313-5	1	Hose Assembly, #12 X 90 LG.
7	A43-6	4	Elbow, 90° Bulkhead, 9/16 JIC
*8	A-19-60	4	Adapter, 9/16 JIC/3/4 ORB
*9	A19-8	4	Adapter, 3/4 JIC/3/4/ORB
10	580602-22	1	Tube Assembly
11	580602-21	1	Tube Assembly
12	580638-21	1	Tube Assembly
13	580638-22	1	Tube Assembly
14	580635-21	2	Tube Assembly
15	580635-22	2	Tube Assembly
16	540313-7	1	Hose Assembly, #8 X 36 LG.
17	A13-58	2	Adapter, 3/4 NPT/3/4 JIC
18	585188-1	1	Auxiliary Pump

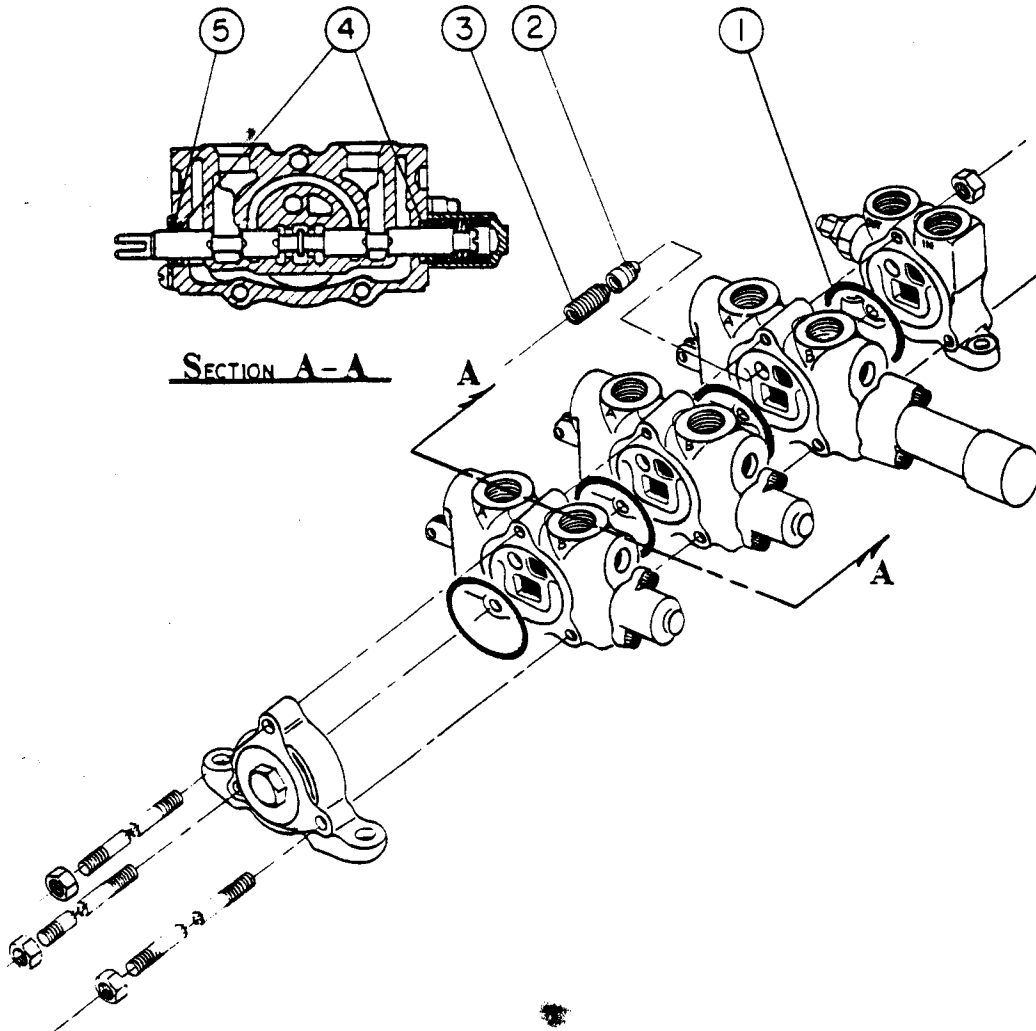
Item No.	Part No.	DC-30 Qty.	Description
19	585274-21	1	Kit, Auxiliary Pump
20	580637-21	1	Tube Assembly
21	580637-22	1	Tube Assembly
22	A13-12	1	Adapter, 3/4 NPT/1-1/16 JIC
23	A51-12	1	Elbow, 90° 1-1/16 JIC/1-1/16 JIC Swivel
24	580639-22	1	Tube Assembly
25	580639-21	1	Tube Assembly
26	580631-21	1	Tube Assembly
27		2	Screw, Hex. HD. Cap, 1/4-20 UNC X 2-1/4 LG.
28	585234-1	1	Flow Control Valve
29	A13-12	1	Adapter, 3/4 NPT/1-1/16 JIC
30		2	Screw, Hex. HD. Cap, 3/8-16 UNC X 1 LG.
31		2	Washer, Split Lock, 3/8
32	540317-2	1	Hose Assembly, #12 X 15 LG.
33	A25-12	1	Tee, M/F/F 3/4 NPT
34	A15-12	1	Elbow, 45°, 3/4 NPT/1-1/16 JIC
35	580636-21	1	Tube Assembly
36	A41-8	2	Connector, Bulkhead, 3/4 JIC

**AUXILIARY HYDRAULICS
DOZER
SN DC30-0501 AND UP**

		DC-30				DC-30	
Item No.	Part No.	Qty.	Description	Item No.	Part No.	Qty.	Description
37	580638-23	1	Tube Assembly	55	580476-3	3	Link
38	580638-24	1	Tube Assembly	56	K10-4	6	Nut, Elastic Stop, 1/4-20 UNC
39	580608-21	1	Tube Assembly	57		1	Roll Pin, Spring, .125 X 1.999 LG.
40	580632-21	1	Tube Assembly	58		4	Screw, Hex. HD. Cap. 1/4-20 UNC X 1 LG.
41		5	Screw, Hex. HD. Cap. 3/8-16 UNC X 1-1/2 LG.	59	580477-1	1	Pin
42	580476-4	1	Link	60	580478-22	1	Lever
43	580601-21	2	Mount, Valve Linkage	61	585232-1	1	Ball Joint, Male
44	580475-1	1	Block	62		1	Nut, Jam, 5/16-24 UNF
45	580474-21	1	Pivot Link	63	585233-1	1	Ball Joint, Female
46	540313-4	1	Hose Assembly, #12 X 100 LG.	64	627111-13	2	Nut, Elastic Stop, 5/16-24 UNF
47	580634-21	1	Tube Assembly	65	580478-21	1	Lever
48	580607-21	1	Tube Assembly	66	642034	3	Ball Grip
49	A14-8	3	Elbow, 90°, 1/2 NPT/3/4 JIC	67	580479-21	1	Lever
*50	A19-10	1	Adapter, 7/8 JIC/7/8 ORB	*68	A19-61	1	Adapter, 7/8 JIC/1-1/16 ORB
*51	A19-57	1	Adapter, 3/4 JIC/7/8 ORB	69	K10-6	5	Nut, Elastic Stop, 3/8-16 UNC
52	585228-21	1	Hyd. Control Valve	*	N11-8		O-Ring, #8
53	585248-21	1	Kit, Hyd. Control Valve	*	N11-10		O-Ring, #10
54		9	Roll Pin, Spring, .187 X 1.000 LG.	*	N11-12		O-Ring, #12

*Indicates O-Ring Size for O-Ring Fittings

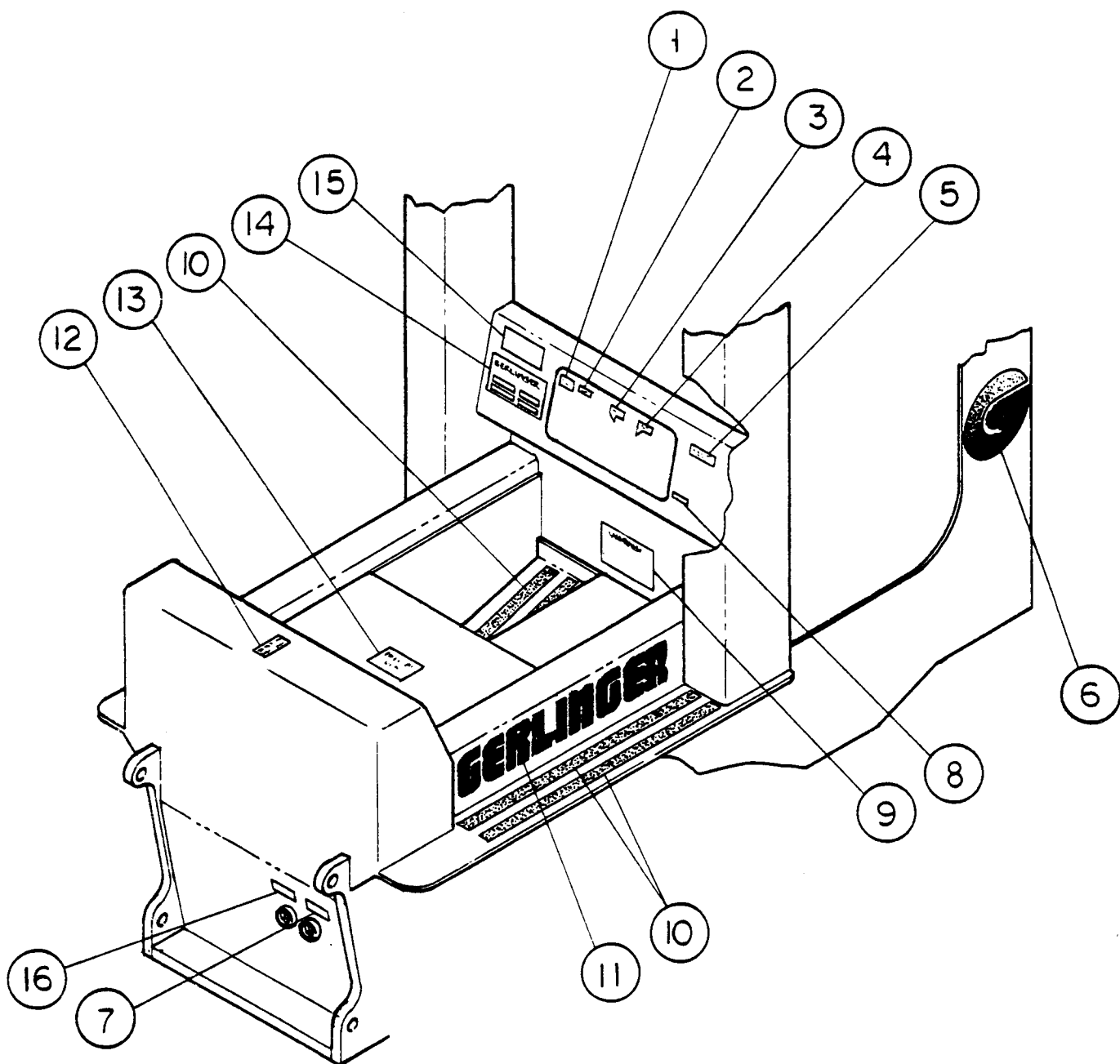
**HYDRAULIC CONTROL VALVE SEAL KIT
(HUSCO)
LOADER & DOZER
S/N LC30-0086 AND UP
S/N DC30-0501 AND UP**



Item No.	Part No.	LC-30 DC-30 Qty.	Description
1	585248-55	5	O-Ring Plunger Sec. Seal
2	585248-51	1	Poppet, Plunger Check Valve
3	585248-52	1	Spring, Valve Poppet

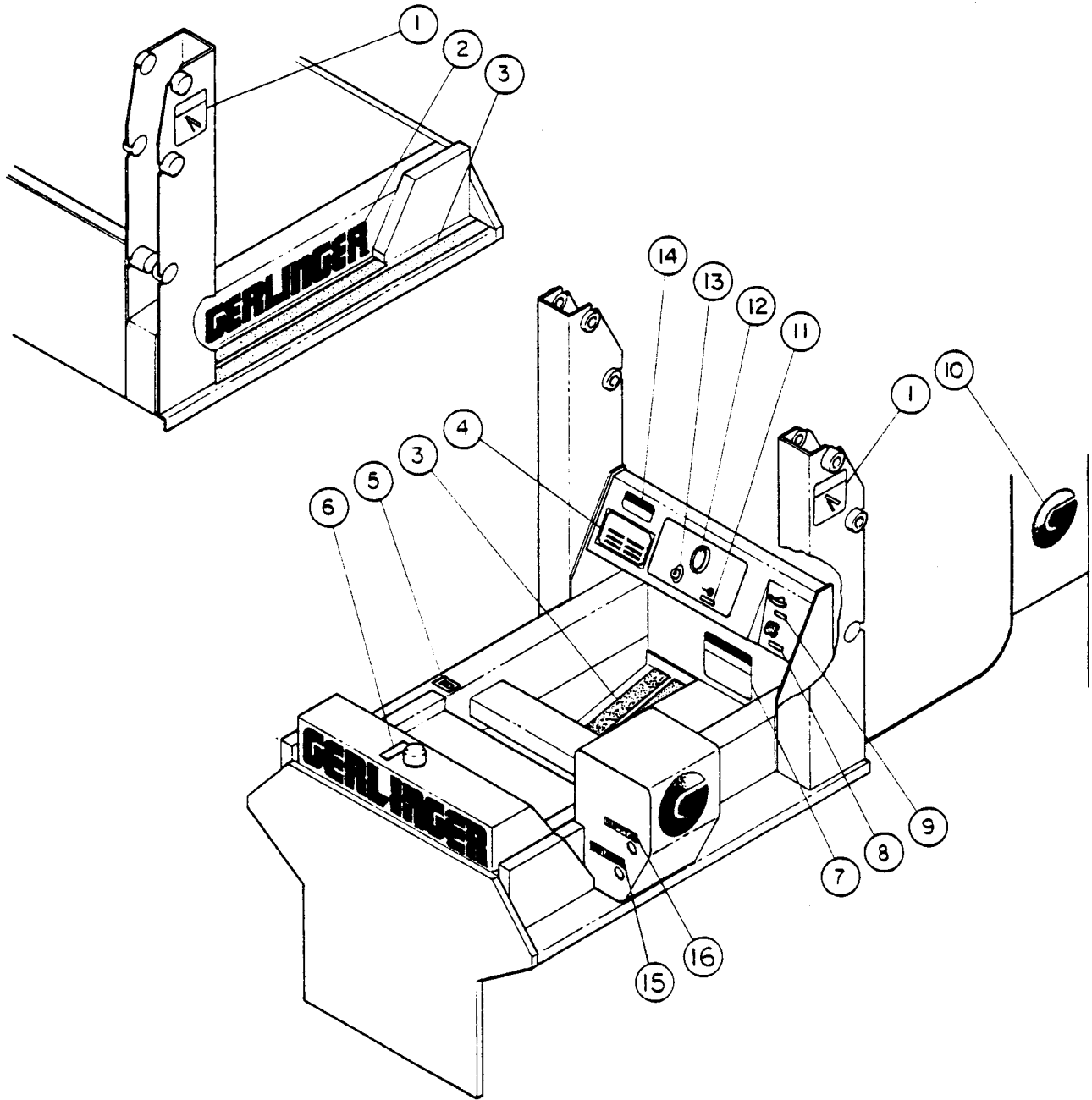
Item No.	Part No.	LC-30 DC-30 Qty.	Description
4	585248-54	4	O-Ring
5	585248-53	4	Seal, Wiper Plunger

**TRIM INSTALLATION
LOADER
S/N LC30-0001 THRU LC30-0085**



Item No.	Part No.	LC-30 Qty.	Description	Item No.	Part No.	LC-30 Qty.	Description
1	538840	1	Decal. "Preheat 30 Sec"	9	580298	1	Nameplate. "Warning"
2	538840	1	Decal. "Start"	10	540008	Arr.	Safety Thread
3	585149	1	Nameplate. "RPM Operating Range"	11	576117	2	Decal. "Gerlinger"
4	585149	1	Nameplate-RPM Operating Range	12	535460	1	Decal. "ATF Only"
5	538840	1	Decal. "Pull to Stop Engine"	13	664546	1	Decal. "Diesel Fuel Only"
6	576116	2	Decal. "G"	14	580289	1	Nameplate. "Serial Number"
7	538840	1	Decal. "Relief"	15	585165	1	Nameplate. "Fasten Seatbelt"
8	538840	1	Decal. "Throttle"	16	538840	1	Decal. "Pressure"

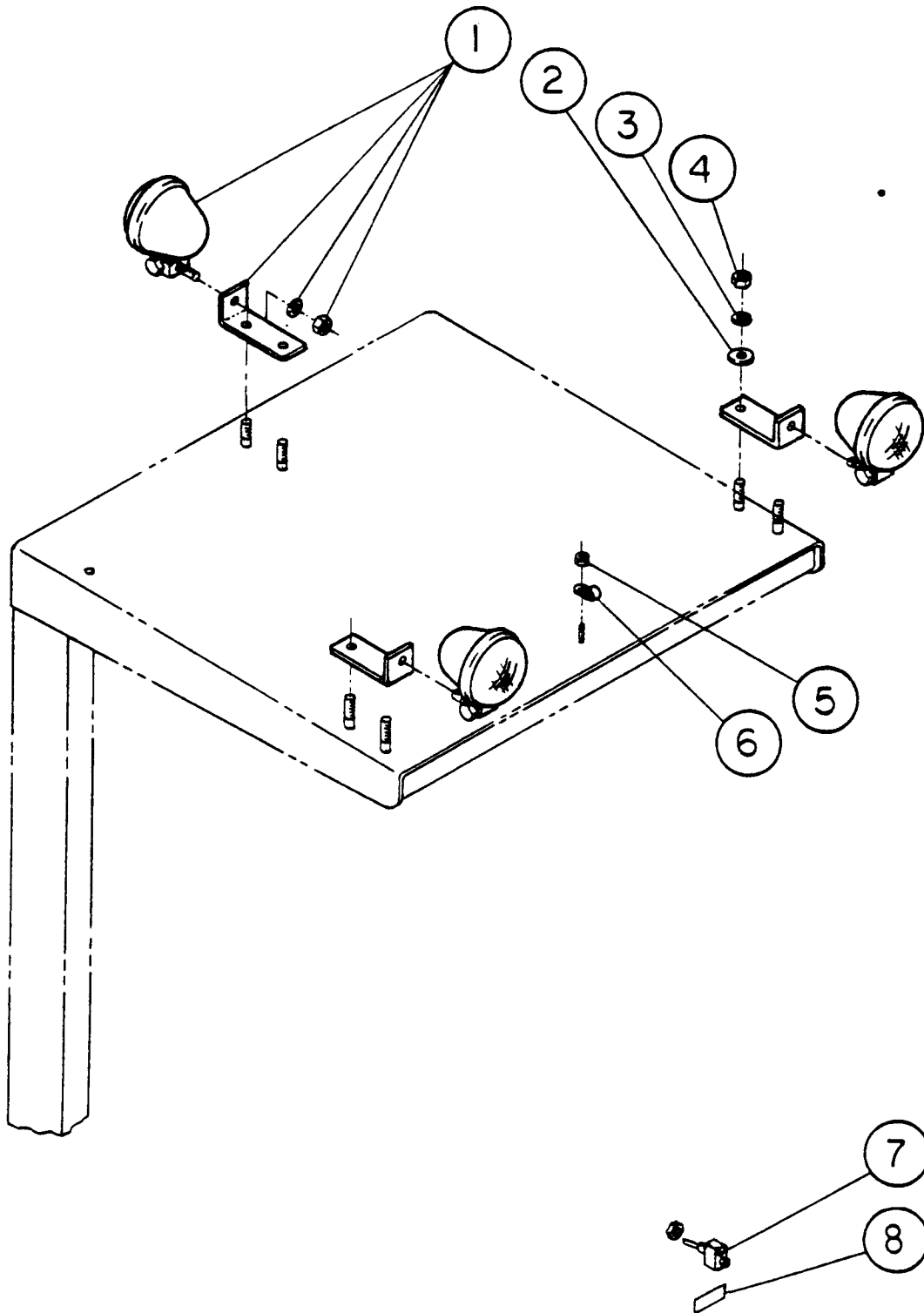
**TRIM INSTALLATION
LOADER & DOZER
S/N LC30-0086 AND UP
S/N DC30-0501 AND UP**



Item No.	Part No.	LC-30 DC-30		Description	Item No.	Part No.	LC-30 DC-30		Description
		Qty.	Qty.				Qty.	Qty.	
1	585193-17	2		Decal, Danger Safety Bar	9	585193-9	1	1	Decal, Fuel Shut-Off
2	576117	2	2	Decal, Gerlinger	10	576116	3	3	Decal, "G"
3	540008	A/R	A/R	Safety Tread	11	585193-8	1	1	Decal, Lights
4	585201-1	1	1	Nameplate & Serial Number	12	585193-4	1	1	Decal, RPM
5	585193-1	1	1	Decal, Diesel	13	585193-3	1	1	Decal, Preheat-Start
6	585193-2	1	1	Decal, Hyd. Oil Only	14	585193-16	1	1	Decal, Warning, Seat Belt
7	580288-2	1	1	Nameplate, Warning	15	585193-5	1	1	Decal, Return
8	585193-7	1	1	Decal, Throttle	16	585193-6	1	1	Decal, Supply

OPTIONS SECTION

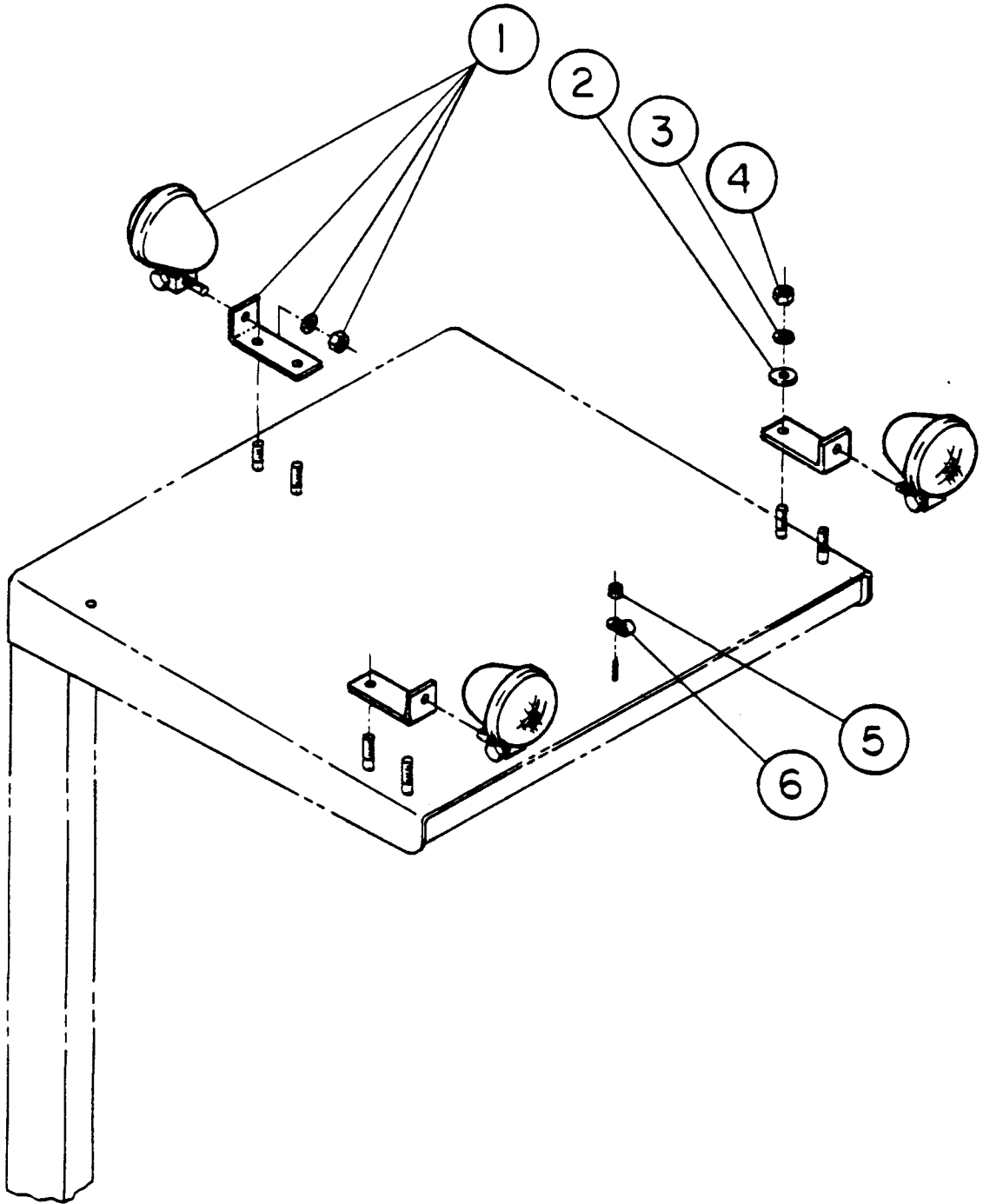
**LIGHTS OPTION
LOADER
S/N LC30-0001 THRU LC30-0085**



Item No.	Part No.	LC-30 Qty.	Description
1	517916	3	Light Driving
2		6	Washer, Flat ¼" Med.
3		6	Washer, Spiral Lock ¼"
4		6	Nut, Hex - ¼" -20NC

Item No.	Part No.	LC-30 Qty.	Description
5		18	Nut, ESNA 10-24
6		18	Clamp, Wire Mtg. ⅜" I.D.
7	644572	1	Switch, Toggle
8		1	Nametag: "Lights"

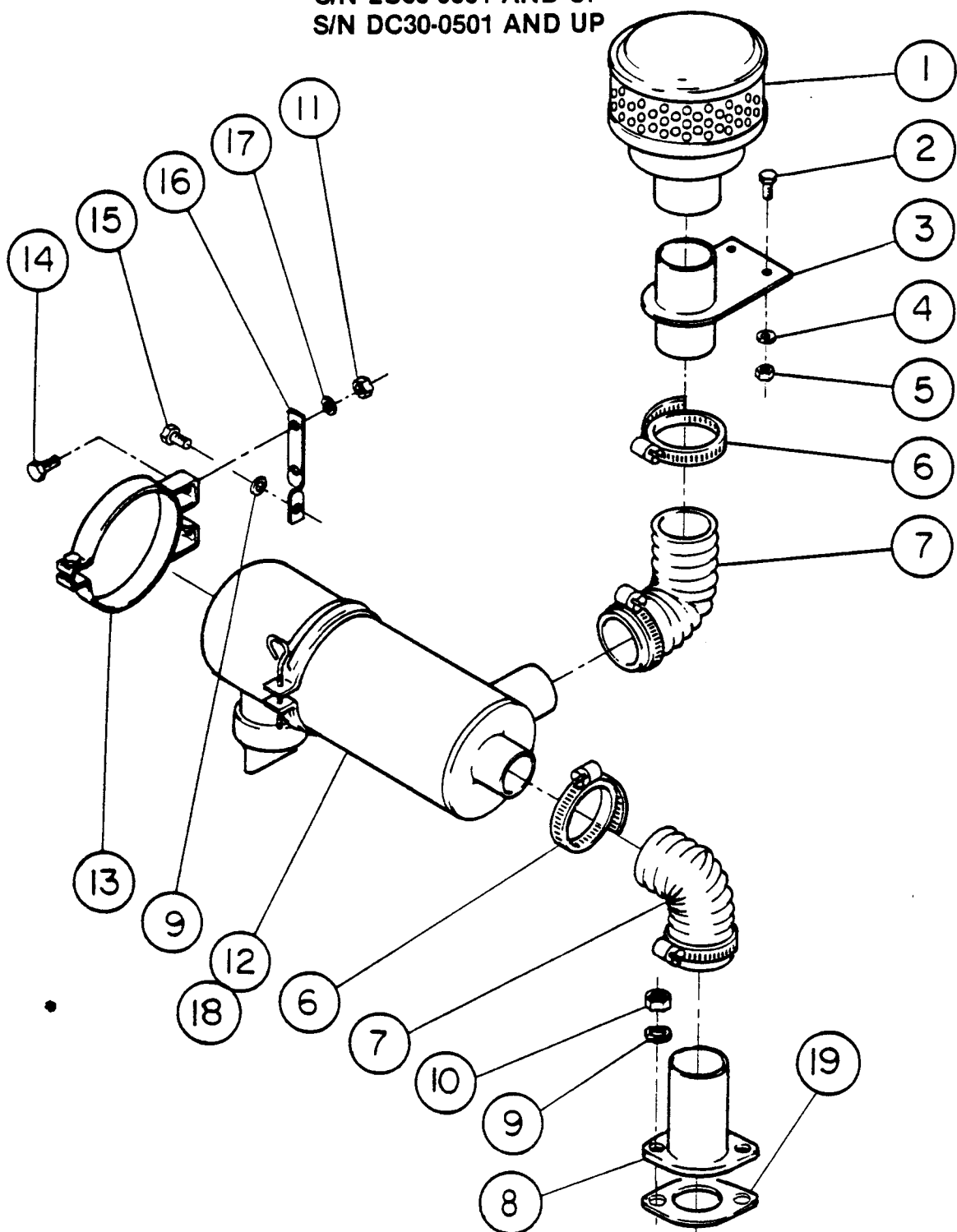
**LIGHTS OPTION
 LOADER & DOZER
 S/N LC30-0086 AND UP
 S/N DC30-0501 AND UP**



Item No.	Part No.	LC-30 DC-30 Qty.	Description
1	517916	3	Light, Driving
2		6	Washer, Flat 1/4 Med.
3		6	Washer, Split Lock 1/4

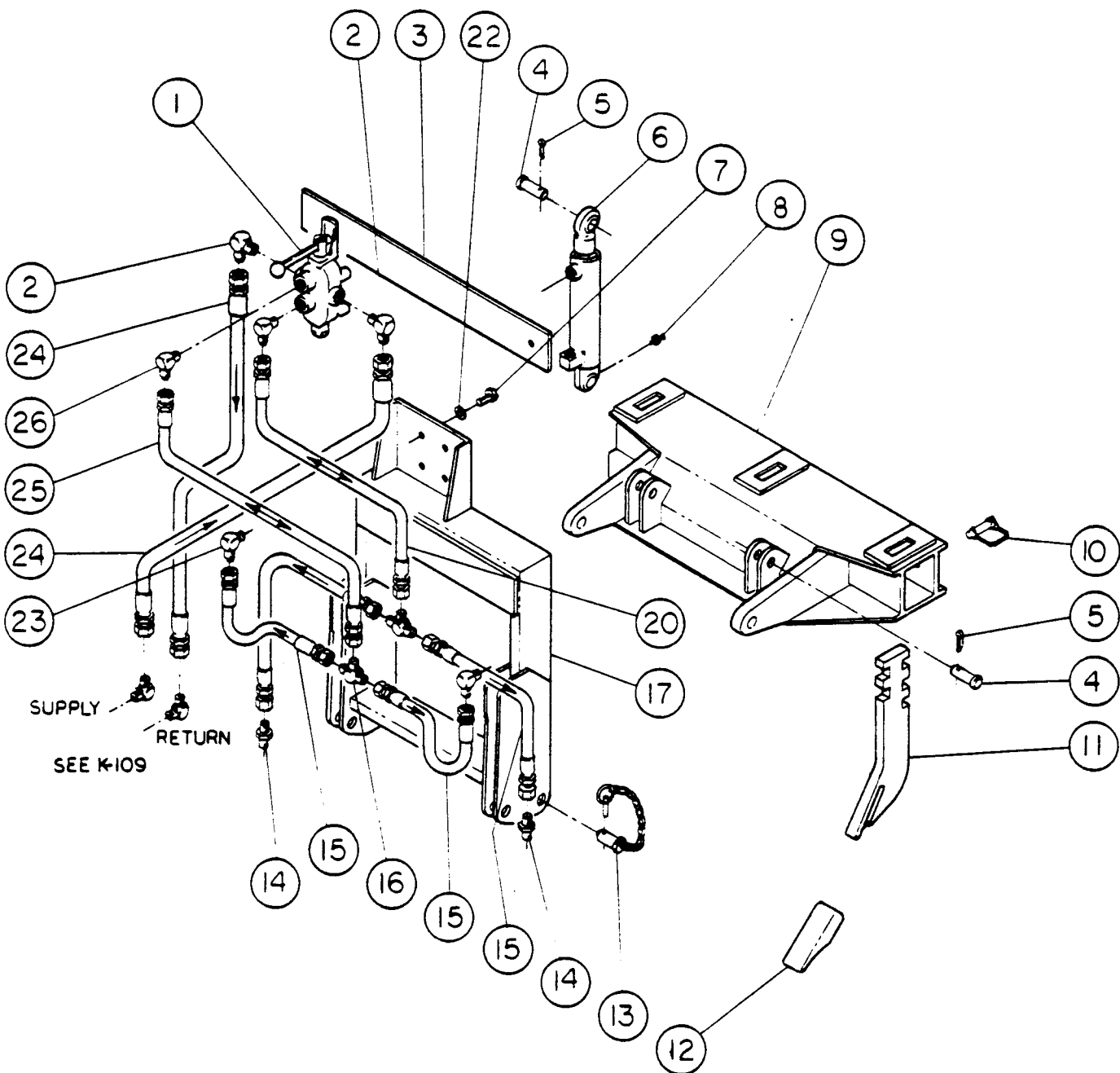
Item No.	Part No.	LC-30 DC-30 Qty.	Description
4		6	Nut, Hex. 1/4-20 UNC
5		18	Nut, Elastic Stop, #10-24 UNC
6		18	Clamp, Wire, 5/16 I.D.

AIR CLEANER INSTALLATION
X-DUTY
LOADER & DOZER
S/N LC30-0001 AND UP
S/N DC30-0501 AND UP



Item No.	Part No.	LC-30 Qty.	Description	Item No.	Part No.	LC-30 DC-30 Qty.	Description
1	585179	1	Pre-Cleaner X-Duty	10	11501051	2	Nut, Hex. 8 mm
2		2	Bolt, Hex. Cap 1/4-ZONC X 3/4"	11		2	Nut, Hex. 5/16-18NC
3	580227	1	Adapter, Pre-Cleaner Mtg.	12	585180-2	1	Air Cleaner, Cyclopac. X-Duty
4		2	Washer, Lock 1/4"	13	585181	1	Band, Mounting
5		2	Nut Hex. 1/4-ZONC	14		2	Bolt, Hex. Cap 5/16-18NC X 3/4
6	L10-11	4	Clamp, Hose	15	F21-820	1	Bolt, Hex Cap (metric) M8 X 20mm 1
7	540015-32	A/R	Hose, Flexible, 2"	16	580242	1	Bracket, Air Cleaner Mounting
8	580229-21	1	Adapter, Intake Manifold	17		2	Washer, Split Lock 5/16
9	11500191	3	Washer, Lock 8 mm	18	580180-52	1	Element, Air Cleaner
				19	540288-1	1	Gasket

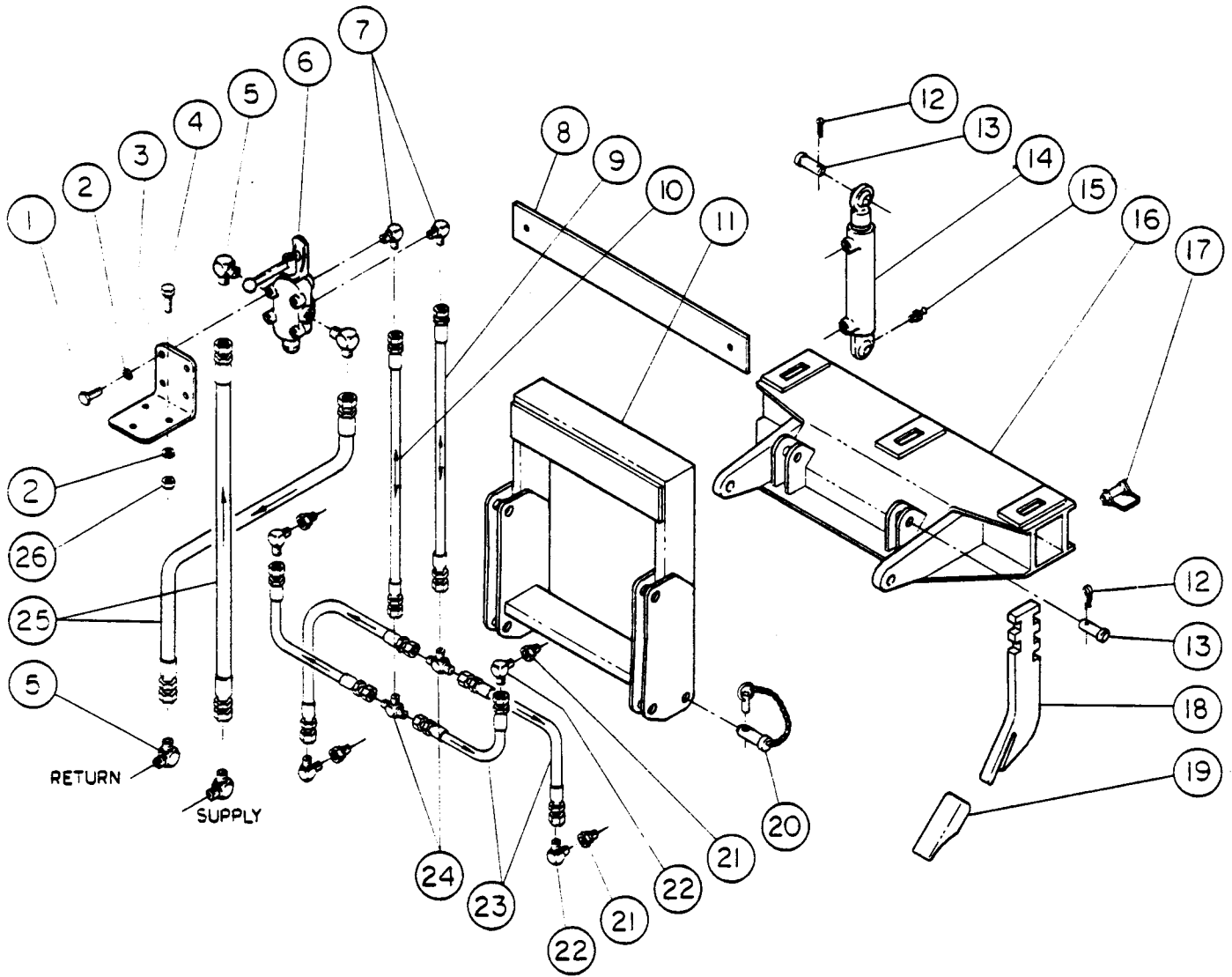
**RIPPER ASSEMBLY
LOADER
S/N LC30-0001 THRU LC30-0029**



Item No.	Part No.	LC-30 Qty.	Description
1	585091	1	Valve, Directional Control
2	A14-12	4	Elbow 90°, #12 JIC x #12 NPT
3	580299	1	Plate, Retainer
4	585078	4	Pin
5	103421	4	Pin, Cotter
6	585090	2	Cylinder, Ripper
7	179835	4	Bolt, Hex. Cap 3/8"-16NC x 3/8"
8	271287	8	Fitting, Lube 1/2"-28NF
9	580206	1	Frame Assembly, Swing
10	585174	2	Pin, Retainer
11	585082	3	Shank, Ripper
12	585083	3	Tooth, Ripper

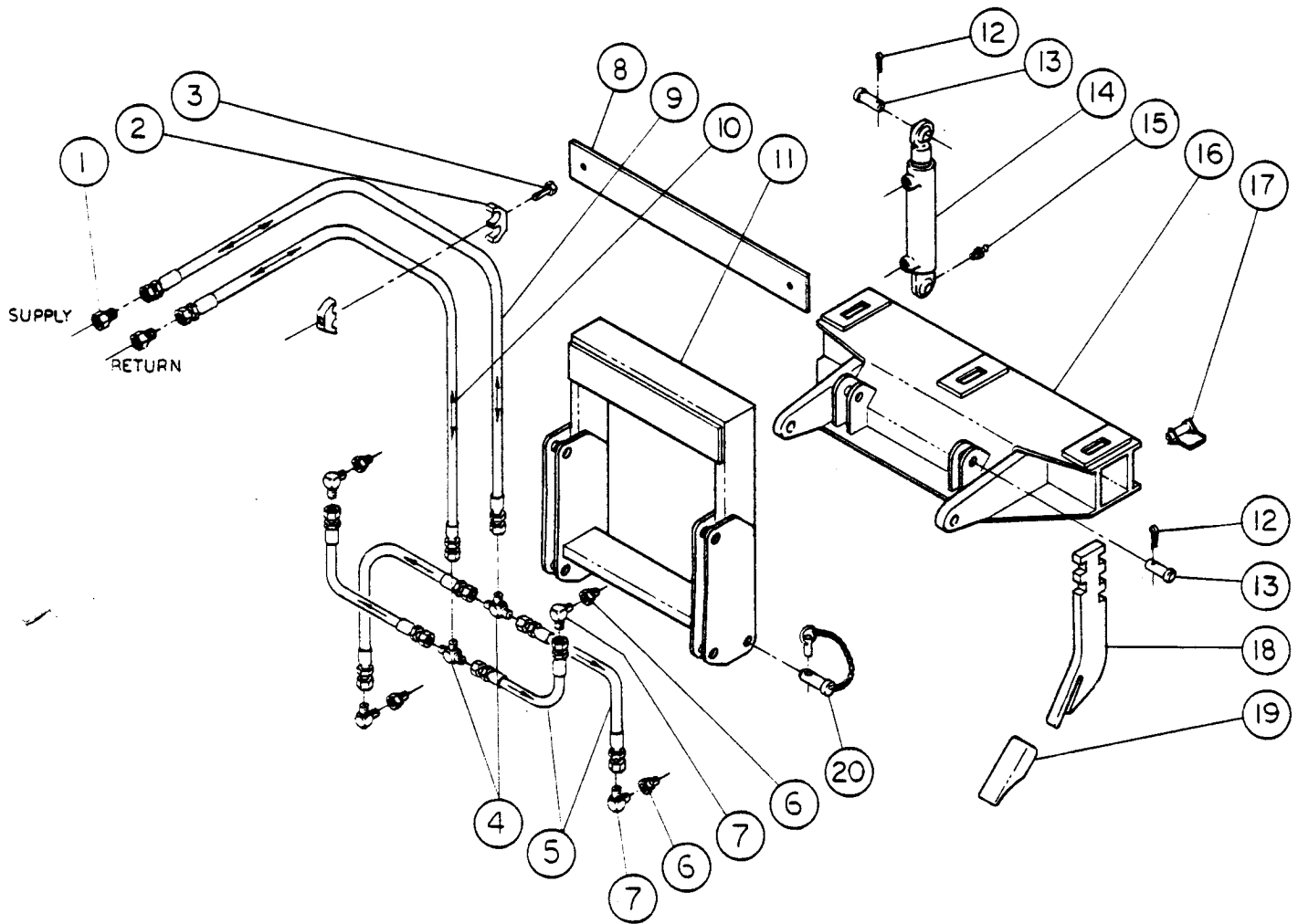
Item No.	Part No.	LC-30 Qty.	Description
13	585099	6	Pin, Clevis
14	A50-8	2	Adapter, #8 JIC x #8 JIC STR.
15	540251-1	4	Hose Assembly, #8 Hydraulic x 11"
16	A12-8	2	Tee, #8 JIC x #8 JIC x #8 JIC
17	580207	1	Frame, Attachment
20	540251-02	1	Hose Assembly, #8 Hydraulic x 12"
22		4	Washer, Lock 3/8"
23	A18-8	2	Elbow 90°, #8 JIC X #8 ORB
24	540251-39	2	Hose Assembly, #12 Hydraulic x 19"
25	540251-03	1	Hose Assembly, #8 Hydraulic x 20"
26	A14-8	2	Elbow 90°, #8 JIC x #8 NPT

**RIPPER ASSEMBLY
LOADER
S/N LC30-0030 THRU LC30-0085**



Item No.	Part No.	LC-30 Qty.	Description	Item No.	Part No.	LC-30 Qty.	Description
1		4	Bolt, Hex Cap $\frac{3}{8}$ "-16NC x $\frac{5}{8}$ "	14	8585090	2	Cylinder, Ripper
2		7	Washer, Lock $\frac{3}{8}$ "	15	271287	8	Fitting, Lube $\frac{1}{4}$ "-28NF
3	580325	1	Bracket, Directional Control Valve MTG	16	6580206	1	Frame Assembly, Swing
4		3	Bolt, Hex Cap $\frac{3}{8}$ "-16NC x 1"	17	585174	2	Pin, Retainer (Snapper Pin)
5	A14-12	4	Elbow, 90° #12 JIC x #8 NPT	18	585082	3	Shank, Ripper
6	585091	1	Valve, Directional Control	19	585083	3	Tooth, Ripper
7	A14-64	2	Elbow, 90° #4 JIC x #8 NPT	20	585099	6	Pin, Clevis (Danuser)
8	580299	1	Plate, Retainer	21	A102-52	4	Reducer, #8 SAE x #6 SAE
9	A540251-41	1	Hose Assembly, #4 Hydraulic x 25"	22	A18-64	4	Elbow 90° #4 JIC x #6 SAE
10	A540251-42	1	Hose Assembly, #4 Hydraulic x 17 $\frac{1}{2}$ "	23	A540251-40	4	Hose Assembly, #4 Hydraulic x 6 $\frac{3}{4}$ "
11	C580207	1	Frame, Attachment	24	A12-4	2	Tee, #4 JIC x #4 JIC x #4 JIC
12	103421	4	Pin, Cotter	25	A540251-39	2	Hose Assembly, #12 Hydraulic x 19"
13	585078	4	Pin, (Danuser)	26		3	Nut, Hex $\frac{3}{8}$ " NC

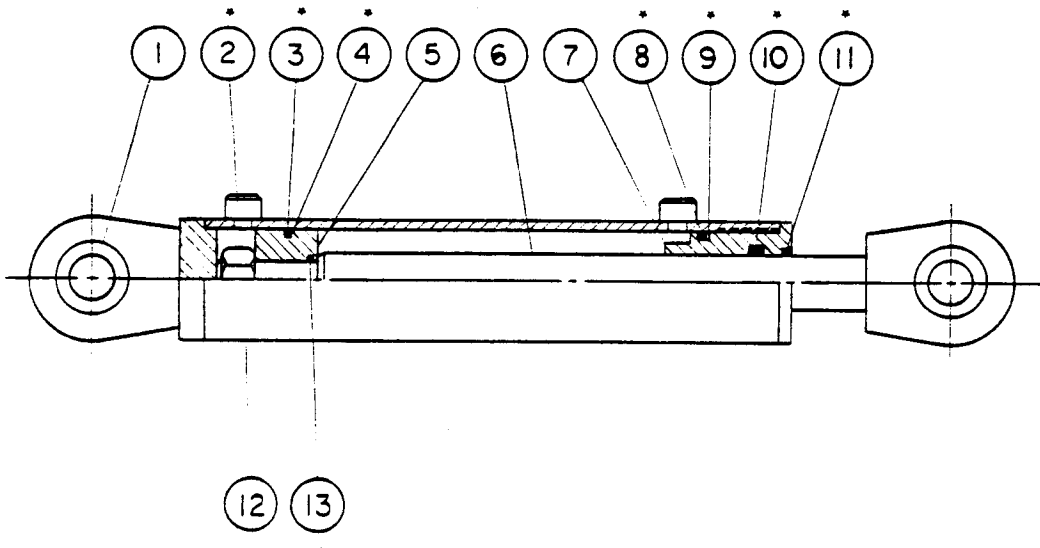
**RIPPER ASSEMBLY
LOADER & DOZER
S/N LC30-0086 AND UP
S/N DC30-0501 AND UP**



Item No.	Part No.	LC-30 DC-30 Qty.	Description
1	A77-34	2	Reducer, 7/16 JIC/3/4JIC
2	576119-4	1	Clamp, Hose
3		1	Screw, Hex. HD. Cap 5/16-UNC 1-3/8 LG.
4	A12-4	2	Tee 7/16 JIC
5	540313-24	4	Hose Assembly #4 X 6.75 LG.
6	A102-52	4	Reducer 3/4 ORB/9/16 STR.
7	A18-64	4	Elbow 90° 7/16 JIC/9/16 ORB
8	580299	1	Plate, Retainer
9	540313-23	1	Hose Assembly #4 X 42 LG.
10	540313-22	1	Hose Assembly #4 X 36 LG.

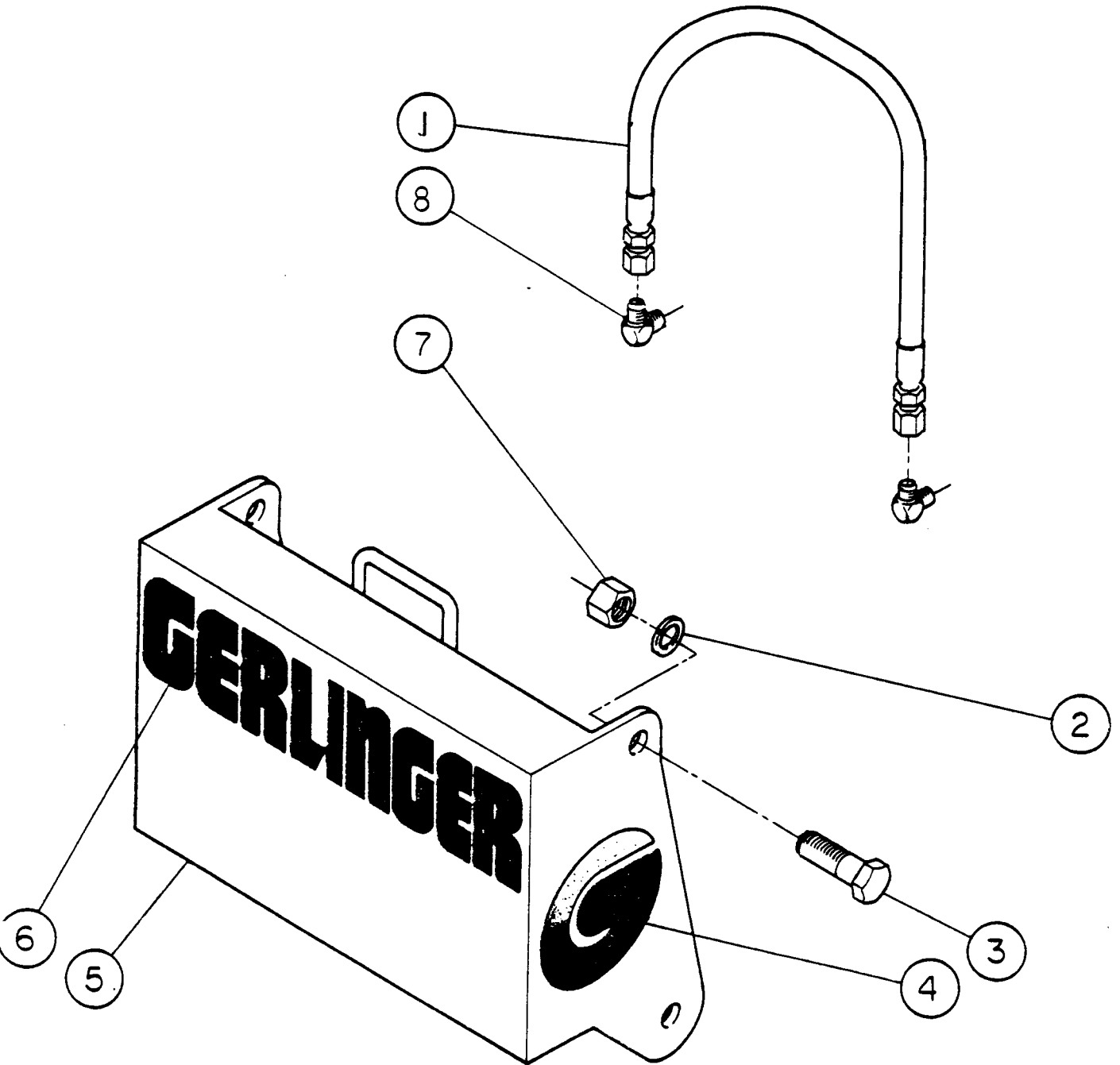
Item No.	Part No.	LC-30 DC-30 Qty.	Description
11	580207	1	Frame Attachment
12	103421	4	Pin, Cotter
13	585078	4	Pin, Clevis
14	585090	2	Cylinder, Ripper
15	271287	4	Fitting, Lube 1/4-28 NF
16	580206	1	Frame Assembly, Swing
17	585174-1	2	Pin, Retainer
18	585082	3	Shank, Ripper
19	585083	3	Tooth, Ripper
20	585099	6	Pin, Clevis

**RIPPER CYLINDER
LOADER & DOZER
S/N LC30-0001 AND UP
S/N DC30-0501 AND UP**



Item No.	Part No.	LC-30 DC-30 Qty.	Description	Item No.	Part No.	LC-30 DC-30 Qty.	Description
1	T21-2	2	Spherical Bearing	*8	N10-224	1	O-Ring, Head
*2		1	Nut, 3/4-16 UNF, Lock	*9	N13-224	1	Back Up Ring, Head
*3	N12-1	1	Sirvon Ring	*10	N15-1	1	Seal - Rod
*4	N10-129	1	O-Ring	*11	N16-11	1	Wiper - Rod
5	585264-1	1	Piston	12	585090	1	Shell
6	585270-1	1	Rod	*13	N10-18	1	O-Ring
7	585259-1	1	Head	*585074-21			Seal Kit

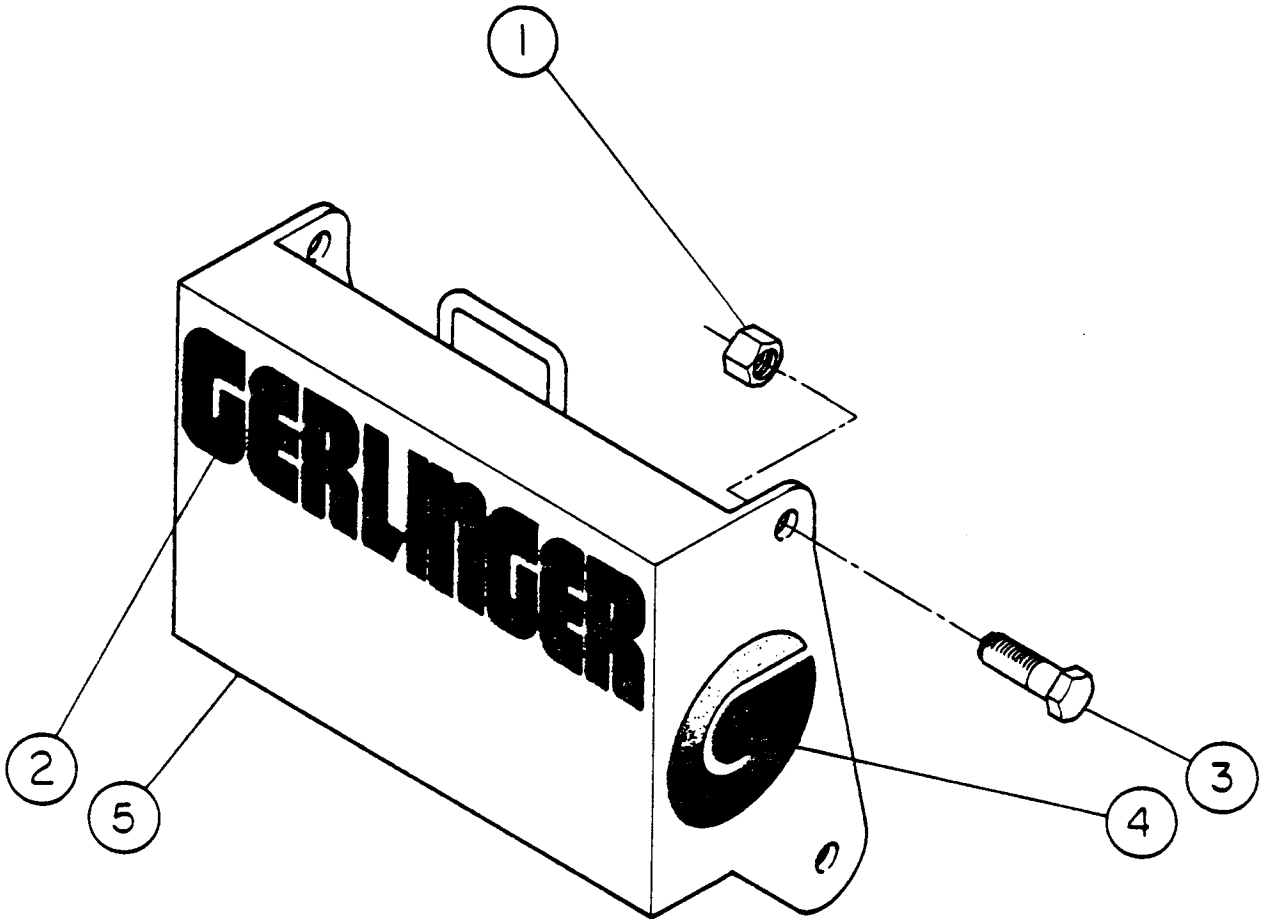
**COUNTERWEIGHT INSTALLATION
LOADER
S/N LC30-0001 THRU LC30-0085**



Item No.	Part No.	LC-30 Qty.	Description
1	540251-39	1	Hose Assembly
2		4	Washer, Lock 1"
3		4	Bolt, Hex Head 1"-8NC x 2 1/4"
4	576116	2	Decal, "G"

Item No.	Part No.	LC-30 Qty.	Description
5	580083-21	1	Counterweight Assembly
6	576117	1	Decal, "Gerlinger"
7		4	Nut, Hex 1"-8NC
8	A14-12	2	EL 90° Ext Pipe or #12 Ext

**COUNTERWEIGHT INSTALLATION
 LOADER & DOZER
 S/N LC30-0086 AND UP
 S/N DC30-0501 AND UP**



Item No.	Part No.	LC-30 DC-30 Qty. Description	Item No.	Part No.	LC-30 DC-30 Qty. Description
1		4 Nut, Hex HD. 1-8NC	4	576116	2 Decal "G"
2	576117	1 Decal "Gerlinger"	5	580083-21	1 Counterweight Assembly
3		4 Screw, Hex HD. Cap 1-8NC X 2 1/4 LG.			