



**GERLINGER**

DIVISION OF GERLINGER INDUSTRIES CORP.

**LC-30/DC-30**

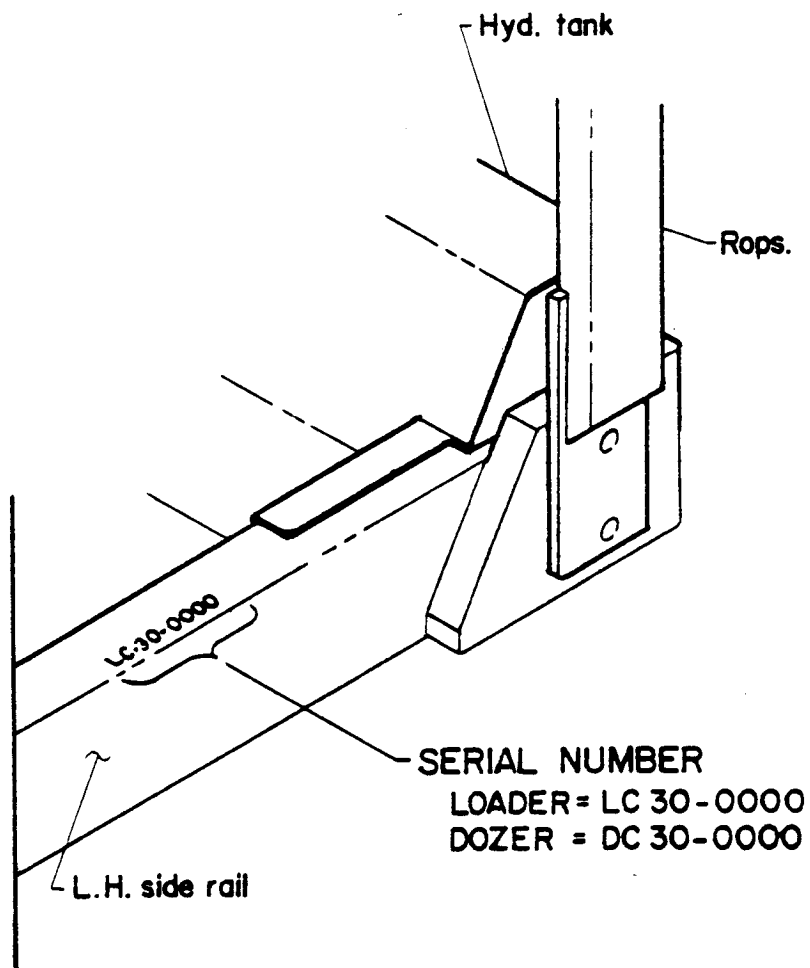
**CRAWLER  
TRACTOR**

**PARTS MANUAL**

REVISED EDITION APRIL 1981

GERLINGER CARRIER CO. / P.O. BOX 2009 / 2690 BLOSSOM DR. N.E. / SALEM, OREGON 97308  
TEL: (503) 399-2661 TWX: 510 599 0103

# SERIAL NUMBER LOCATER



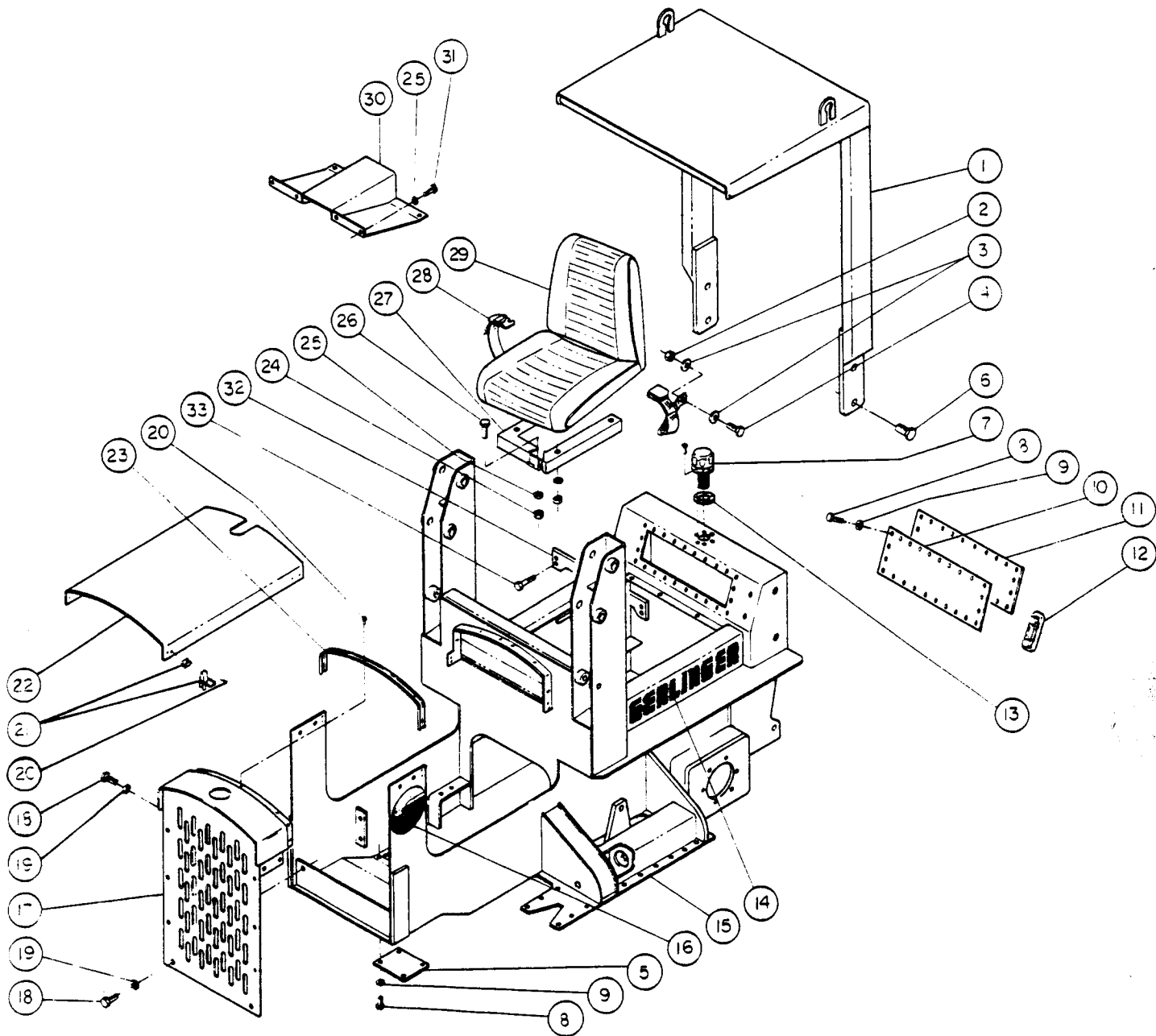
## TABLE OF CONTENTS

	SERIAL NO.S	PAGE
FRAME ASSEMBLY	LC30-0001—LC30-0085	1
FRAME ASSEMBLY	LC30-0086 AND UP	2
FRAME ASSEMBLY	DC30-0501 AND UP	3
TRACK ASSEMBLY	LC30-0001—LC30-0085	4
TRACK ASSEMBLY	LC30-0086 AND UP	5
	DC30-0501 AND UP	5
ROLLER, TRACK	ALL SERIAL NO.S	6
IDLER FRONT	ALL SERIAL NO.S	8
ENGINE ASSEMBLY	LC30-0001—LC30-0085	9
ENGINE ASSEMBLY	LC30-0086 AND UP / DC30-0501 AND UP	10-11
ISUZU DEALER DIRECTORY		12-22
ISUZU ENGINE GROUP LOCATER		23
CYL. HEAD & OTHER PARTS		24
CYL. BODY & OTHER PARTS		25
TIMING GEAR CASE & TIMING GEAR		26
OIL PAN, FUEL FILTER & OTHER PARTS		27
OIL PUMP & FIXING PARTS		28
CRANK SHAFT, CRANK BRG., PISTON, CONN. ROD & FLY WHEEL		29
VALVE MECHANISM		30
OIL PIPE & OTHER PARTS		31
COOLING SYSTEM		32
AIR INTAKE & EXHAUST SYSTEM		33
FUEL SYSTEM		34
HANGER & FIXING PARTS		35
INJECTION PUMP & OTHER PARTS		36
INJECTION PUMP: PROPER (DIESEL KIKI)		37-38
GOVERNOR, MECHANICAL (DIESEL KIKI)		39-40
FEED PUMP: INJECTION PUMP FIG. 2 (DIESEL KIKI)		41
NOZZLE HOLDER (DIESEL KIKI)		42
STARTER: FIG. 2 (DENSO)		43
GENERATOR: (DENSO)		44
FUEL SYSTEM	LC30-0001—LC30-0085	45
FUEL SYSTEM	LC30-0086 AND UP / DC30-0501 AND UP	46
COOLING SYSTEM	LC30-0001—LC30-0085	47
COOLING SYSTEM	LC30-0086 AND UP / DC30-0501 AND UP	48
AIR CLEANER INSTALLATION	ALL SERIAL NO.S	49
EXHAUST SYSTEM	LC30-0001 AND UP	50
EXHAUST SYSTEM	DC30-0501 AND UP	51
ELECTRICAL INSTALLATION	LC30-0001—LC30-0085	52
ELECTRICAL INSTALLATION	LC30-0086 AND UP / DC30-0501 AND UP	53
ELECTRICAL DIAGRAM	LC30-0001—LC30-0085	54
ELECTRICAL DIAGRAM	LC30-0086 AND UP / DC30-0501 AND UP	55

cont. next page

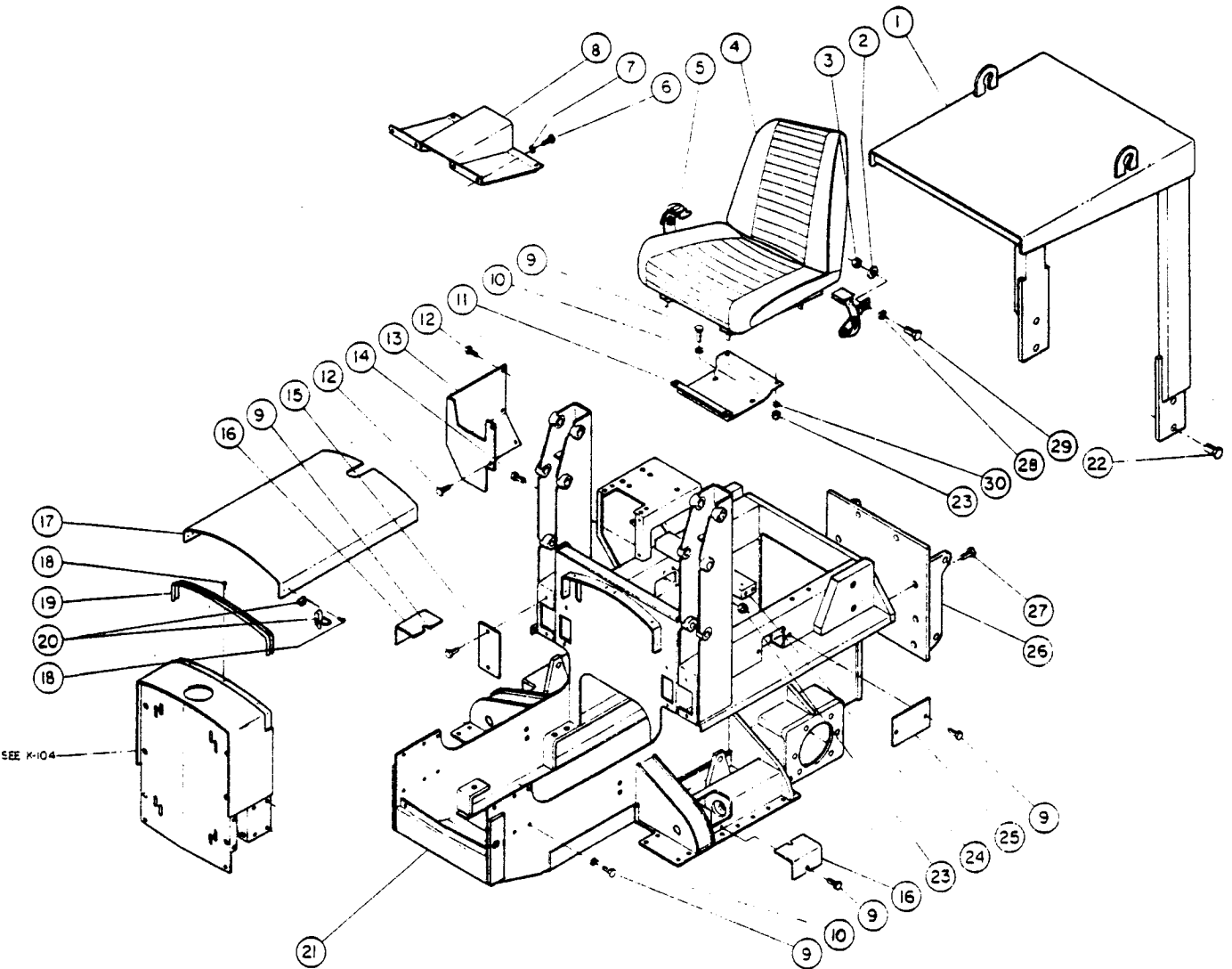
CONTROLS GROUP	LC30-0001—LC30-0085	56
CONTROLS GROUP	LC30-0086 AND UP / DC30-0501 AND UP	57
LIFT SYSTEM	LC30-0001 AND UP	58
LIFT SYSTEM ATTACHMENTS	LC30-0001 AND UP	59
LIFT CYLINDER	LC30-0001 AND UP	60
DUMP CYLINDER	LC30-0001 AND UP	61
BLADE ASSEMBLY	DC30-0501 AND UP	62-63
LIFT CYLINDER	DC30-0501 AND UP	64
ANGLE CYLINDER	DC30-0501 AND UP	65
TILT CYLINDER	DC30-0501 AND UP	66
HYDRAULICS & HYDROSTATIC	LC30-0001—LC30-0029	67-68
PROPULSION SYSTEM	LC30-0030—LC30-0085	69-70
HYDROSTATIC PROPULSION	LC30-0086 AND UP / DC30-0501 AND UP	71-72
TORQUE HUBS SPINDLE KIT	LC30-0086 AND UP / DC30-0501 AND UP	73
HYDROSTATIC PUMP	LC30-0086 AND UP / DC30-0501 AND UP	74
AUXILIARY HYDRAULICS	LC30-0086 AND UP	75-76
AUXILIARY HYDRAULICS	DC30-0501 AND UP	77-78
HYDRAULIC CONTROL VALVE SEAL KIT	LC30-0086 AND UP / DC30-0501 AND UP	79
TRIM INSTALLATION	LC30-0001—LC30-0085	80
TRIM INSTALLATION	LC30-0086 AND UP / DC30-0501 AND UP	81
	— OPTION SECTION —	
LIGHTS OPTION	LC30-001—LC30-0085	83
LIGHTS OPTION	LC30-0086 AND UP / DC30-0501 AND UP	84
AIR CLEANER INSTALLATION X-DUTY	ALL SERIAL NO.S	85
RIPPER ASSEMBLY	LC30-0001—LC30-0029	86
RIPPER ASSEMBLY	LC30-0030—LC30-0085	87
RIPPER ASSEMBLY	LC30-0086 AND UP / DC30-0501 AND UP	88
RIPPER CYLINDER	ALL SERIAL NO.S	89
COUNTERWEIGHT INSTALLATION	LC30-0001—LC30-0085	90
COUNTERWEIGHT INSTALLATION	LC30-0086 AND UP / DC30-0501 AND UP	91

**FRAME ASSEMBLY  
LOADER  
S/N LC30-0001 THRU LC30-0085**



Item No.	Part No.	LC-30 Qty.	Description	Item No.	Part No.	LC-30 Qty.	Description
1	585114	1	ROPS Guard	18		6	Bolt, Hex. $\frac{3}{8}$ "-16NC x 1"
2		2	Nut, Hex $\frac{1}{2}$ "-13NC	19		6	Washer, Lock $\frac{3}{8}$ "
3		4	Washer, Plain $\frac{1}{2}$ "	20	585088	18	Rivet, Pop $\frac{3}{8}$ "
4		2	Bolt, Hex $\frac{1}{2}$ "-13NC x 1"	21	585021	2	Latch, Hood
5	580232	4	Plate, Oil Drain Access	22	580073	1	Hood
6		4	Bolt, $\frac{3}{4}$ "-10NC x 1 $\frac{1}{2}$ , Grade 5	23	580082	2	Lace, Hood
7	585018	1	Filler, Filter Breather	24		8	Nut, Hex $\frac{3}{8}$ "-18NC
8		28	Bolt, Hex $\frac{1}{4}$ "-20NC x $\frac{3}{4}$ "	25		14	Washer, Lock $\frac{3}{8}$ "
9		28	Washer, Lock $\frac{1}{4}$ "	26		8	Bolt, Hex $\frac{3}{8}$ "-18NC x $\frac{3}{4}$ "
10	580076	1	Cover, Reservoir	27	580294-21	1	Mount, Seat
11	580189	1	Gasket, Reservoir Cover	28	535388	1	Belt Assembly, Seat
12	585019	1	Gauge, Fluid Level Temperature	29	585102	1	Seat
13		1	Gasket, Part of #7	30	580096	1	Floorboard
14	576117	2	Decal, "Gerlinger"	31		6	Bolt, Hex $\frac{3}{8}$ "-18NC x $\frac{1}{2}$ "
15	580218	1	Chassis Weldment	32	580300	1	Crossmember, Rear Pump
16	576116	2	Decal "G"	33		4	Bolt, Hex. $\frac{1}{2}$ "-13NC x 1 $\frac{1}{2}$ Lg.
17	580032	1	Cowl Weldment				

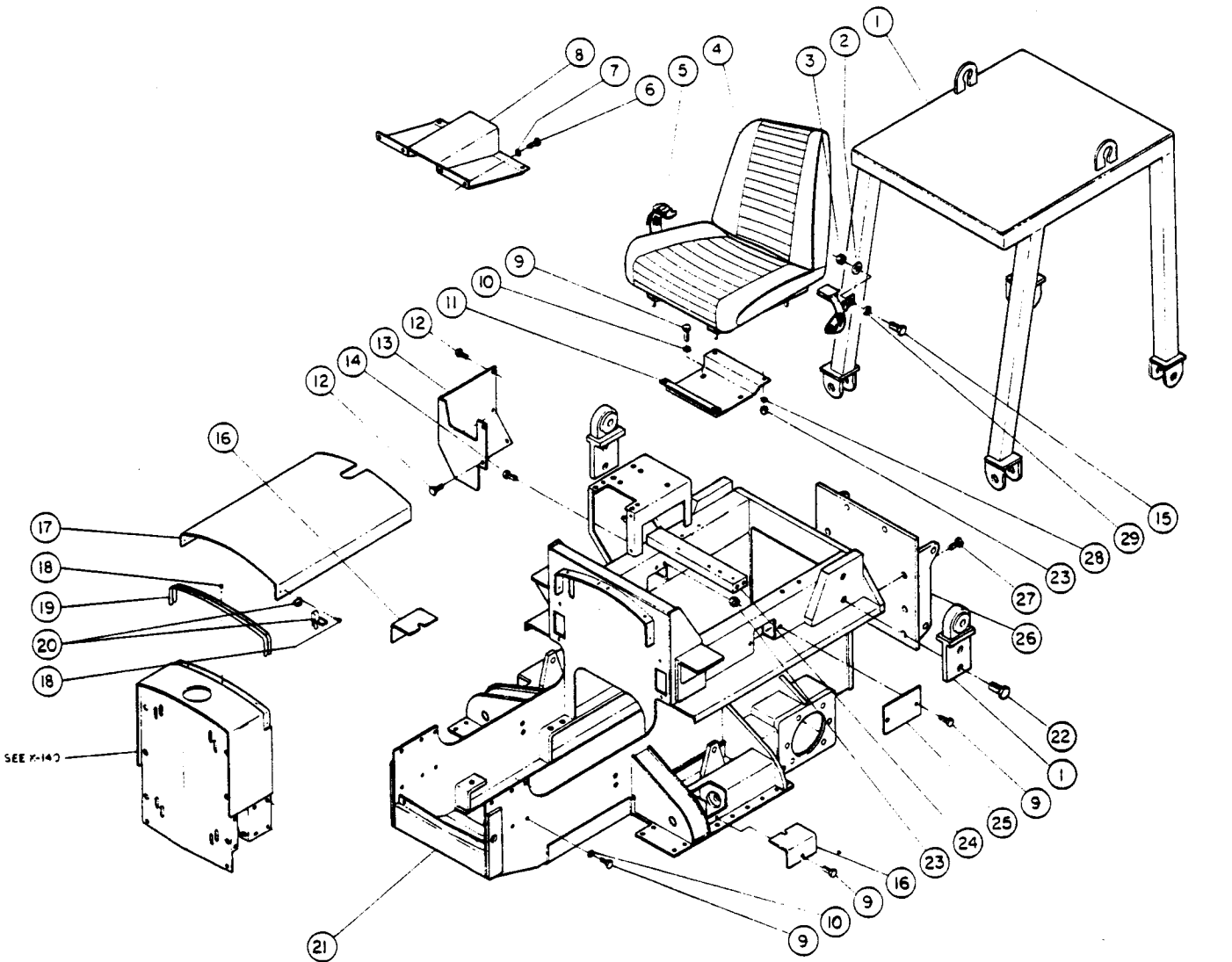
# FRAME ASSEMBLY LOADER S/N LC30-0086 AND UP



Item No.	Part No.	LC-30 Qty.	Description
1	585208-1	1	R.O.P.S. Cantilever
2		2	Washer, Flat, 1/2 Large
3	K10-8	2	Nut, Elastic Stop, 1/2-13 UNC
4	585102-1	1	Seat
5	535388	1	Seat Belt
6		6	Screw, Hex. HD. Cap, 5/16-18 UNC X 1/2 LG
7		6	Washer, Split Lock, 5/16
8	580096-21	1	Floor Board
9		14	Screw, Hex. HD. Cap, 1/4-20 UNC X 1/2 LG.
10		4	Washer, Flat, 1/2 Large
11	580674-21	1	Pedestal-Seat
12		8	Screw, Hex. HD. Cap, -10-24 UNC X 3/8 LG.
13	580661-1	1	Cover, Control Valve
14		4	Screw, Hex. HD. Cap, 5/16-18 UNC X 1 LG.
15	580605-2	2	Access Plate

Item No.	Part No.	LC-30 Qty.	Description
16	580643-1	2	Cover, Track Tension
17	580460-21	1	Hood Weldment
18	585088	17	Rivet, Pop, 3/16
19	585036	A/R	Lace
20	585021	2	Latch, Hood
21	580330-21	1	Chassis Frame Weldment
22	223482	4	Screw, Hex. HD. Cap, 1-8 UNC X 2 LG.
23	K10-5	8	Nut, Elastic Stop, 5/16-18 UNC
24	580670-21	1	Channel, Support
25	580605-1	1	Access Plate
26	580458-21	1	Mounting Bracket
27		6	Screw, Hex. HD. Cap, 3/4-10 UNC X 1 1/2 LG.
28		2	Washer, Flat, 1/2 Small
29		2	Screw, Hex. HD. Cap, 1/2-13 UNC X 2 LG.
30		4	Washer, Flat, 5/16 Small

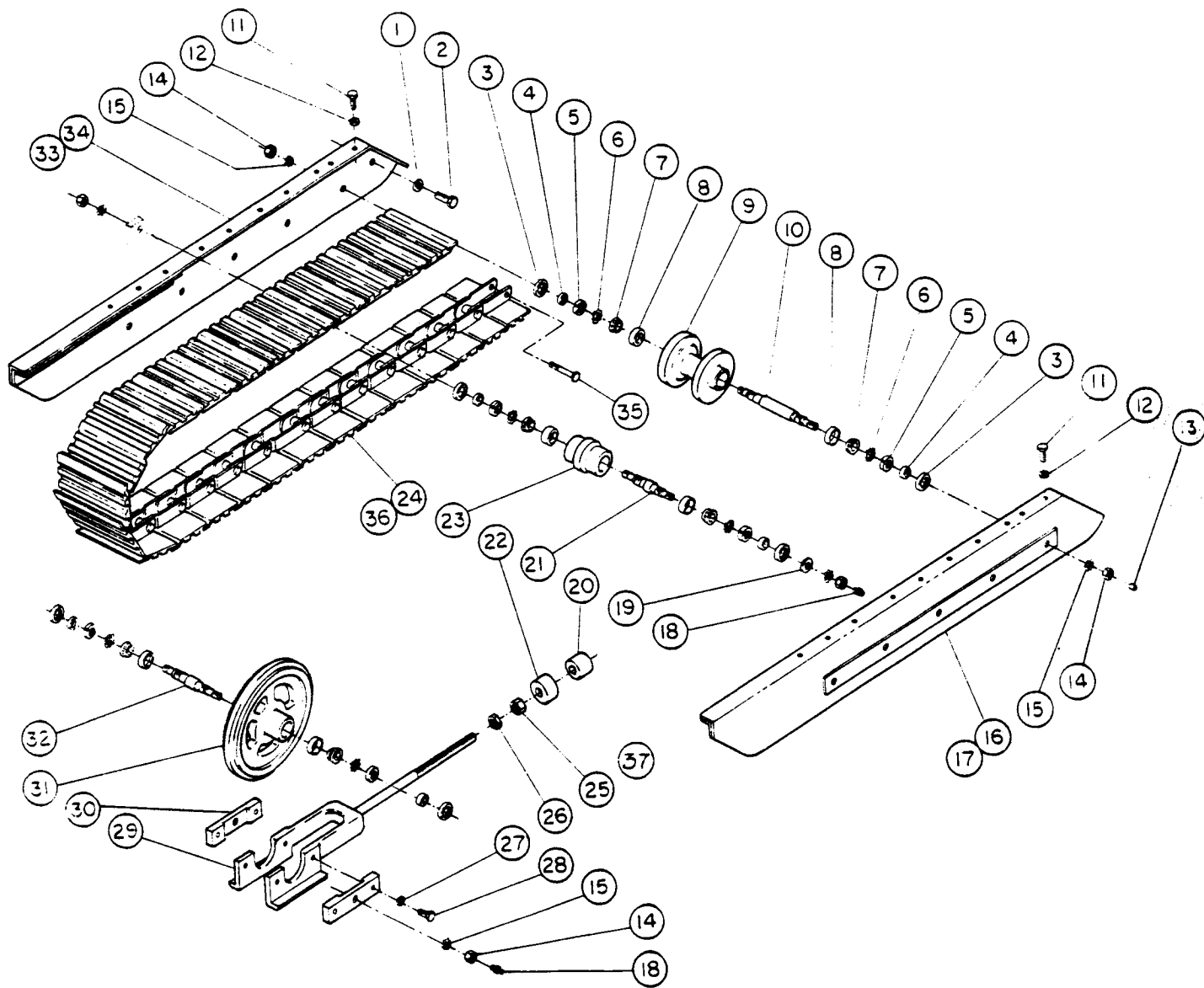
# FRAME ASSEMBLY DOZER S/N DC30-0501 AND UP



Item No.	Part No.	DC-30 Qty.	Description
1	585209-21	1	R.O.P.S., Four Poster
2		2	Washer, Flat, 1/2 Large
3	K10-8	2	Nut, Elastic Stop, 1/2-13 UNC
4	585102-1	1	Seat
5	535388	1	Seat Belt
6		6	Screw, Hex. HD. Cap. 5/16-18 UNC X 1/2 LG
7		6	Washer, Split Lock. 5/16
8	580096-21	1	Floorboard
9		10	Screw, Hex. HD. Cap. 1/4-20 UNC X 1/2 LG.
10		4	Washer, Split Lock, 1/4
11	580674-1	1	Seat Pedestal
12		8	Screw, Hex. HD. Cap. -10-24 UNC X 3/8 LG
13	580661-1	1	Cover, Control Valve
14		4	Screw, Hex. HD. Cap. 5/16-18 UNC X 1 LG
15		2	Screw, Hex. HD. Cap. 1/2-13 UNC X 1 LG

Item No.	Part No.	DC-30 Qty.	Description
16	580643-1	2	Cover, Track Tension
17	580460-21	1	Hood Weldment
18	585088	17	Rivet, Pop, 3/16
19	585036	A/R	Lace
20	585021	2	Latch, Hood
21	580328-21	1	Chassis Frame Weldment
22	223482	4	Screw, Hex. HD. Cap. 1-8 UNC X 2 LG. GR8
23	K10-5	8	Nut, Elastic Stop, 5/16-18 UNC
24	580670-21	1	Channel Support
25	580605-1	1	Access Plate
26	580458-21	1	Mounting Bracket
27		6	Screw, Hex. HD. Cap. 3/4-10 UNC X 1 1/2 LG.
28		4	Washer, Flat, 5/16 Small
29		2	Washer, Flat, 1/2 Small

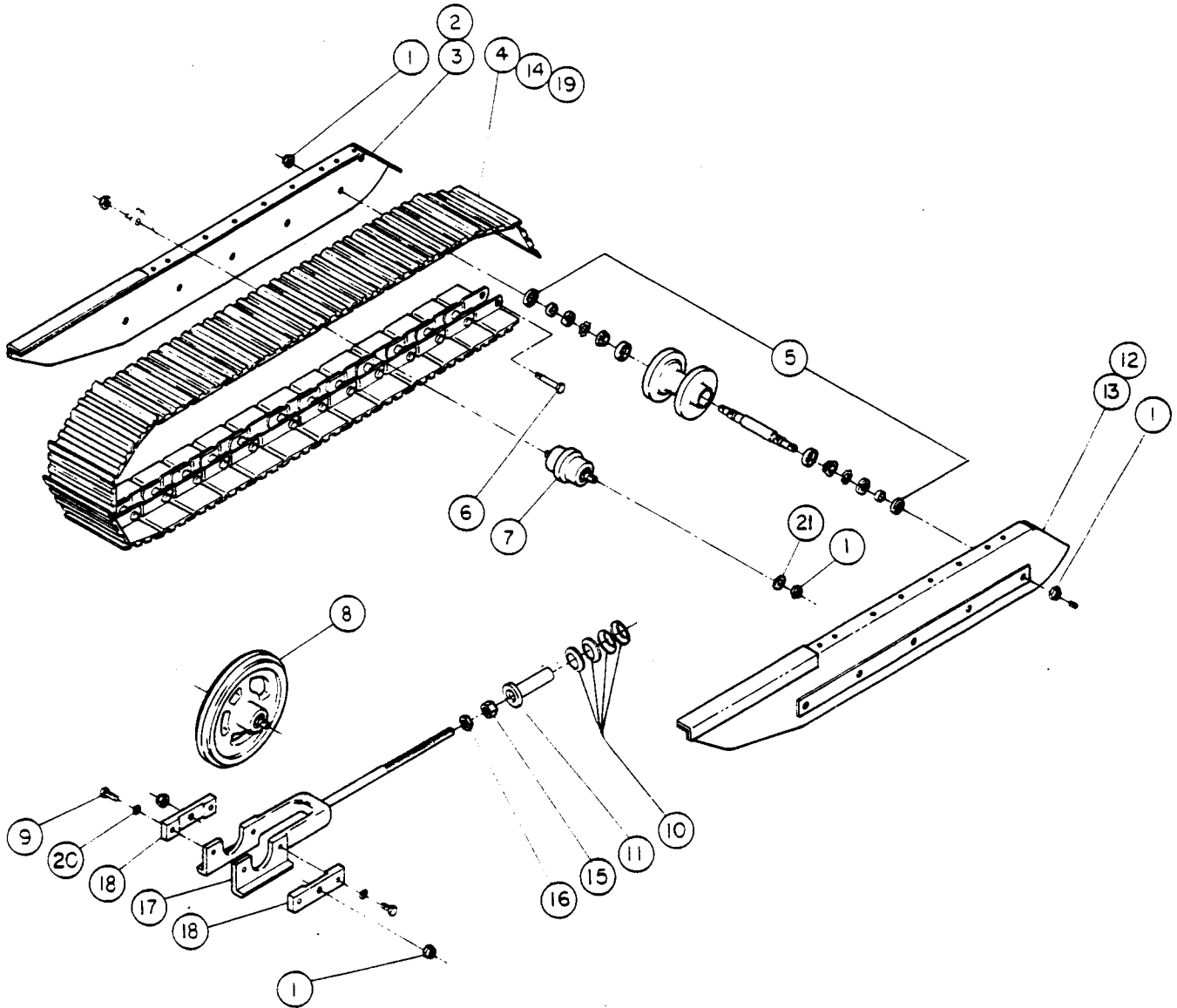
# TRACK ASSEMBLY LOADER S/N LC30-0001 THRU LC30-0085



Item No.	Part No.	LC-30 Qty.	Description	Item No.	Part No.	LC-30 Qty.	Description
1		2	Washer, Lock 1/2"	19		1	Washer, Large Flat 3/4"
2		2	Bolt, Hex Cap 1/2"-13NC x 1 1/4"	20	540273-1	2	Bushing
3	585020	28	Seal	21	585157	2	Axle, Top Roller
4	580056	28	Spacer	22	585158	2	Collar, Rubber Expansion
5	127708	28	Nut, Lock N-05	23	580055	2	Roller, Top
6	127685	28	Washer, Lock W-05	24	580268	2	Track Assembly-Street Pad
7	585029	28	Bearing, Cone	25	585123	2	Nut, Hex 1"-8NC SS.
8	585030	28	Bearing, Cup	26	585124	2	Nut, Hex Jam 1"-8NC SS.
9	580054	10	Roller, Track	27		8	Washer, Lock 1/2"
10	580057	10	Axle, Track Roller	28		8	Bolt, Hex Cap 1/2"-13NC x 1 1/2"
11		38	Bolt, Hex Cap 3/8"-16NC x 1 1/4"	29	580226	2	Frame, Idler
12		38	Washer, Lock	30	580051	4	Plate, Idler Retainer
13	272977	10	Plug, Hex Socket 1/2" NPT	31	580295-2	2	Wheel, Idler
14		28	Nut, Hex 3/4-16NF	32	580058	2	Axle, Front Idler
15	138506	28	Washer, Lock 3/4 Ext. Tooth	33	580047-21	1	Bracket, Left-Track Suspension (inner)
16	580272-21	1	Bracket, Left-Track Suspension (outer)	34	580047-22	1	Bracket, Right-Track Suspension (inner)
17	580272-22	1	Bracket, Right-Track Suspension (outer)	35	585171	2	Pin, Master Chain
18	127800	4	Fitting, Lube 1/2" NPT	36	580307	1	Track Pad Replacement
				37	580656-21	1	Conversion Kit (Rubber Bushing to Belleville Tension)

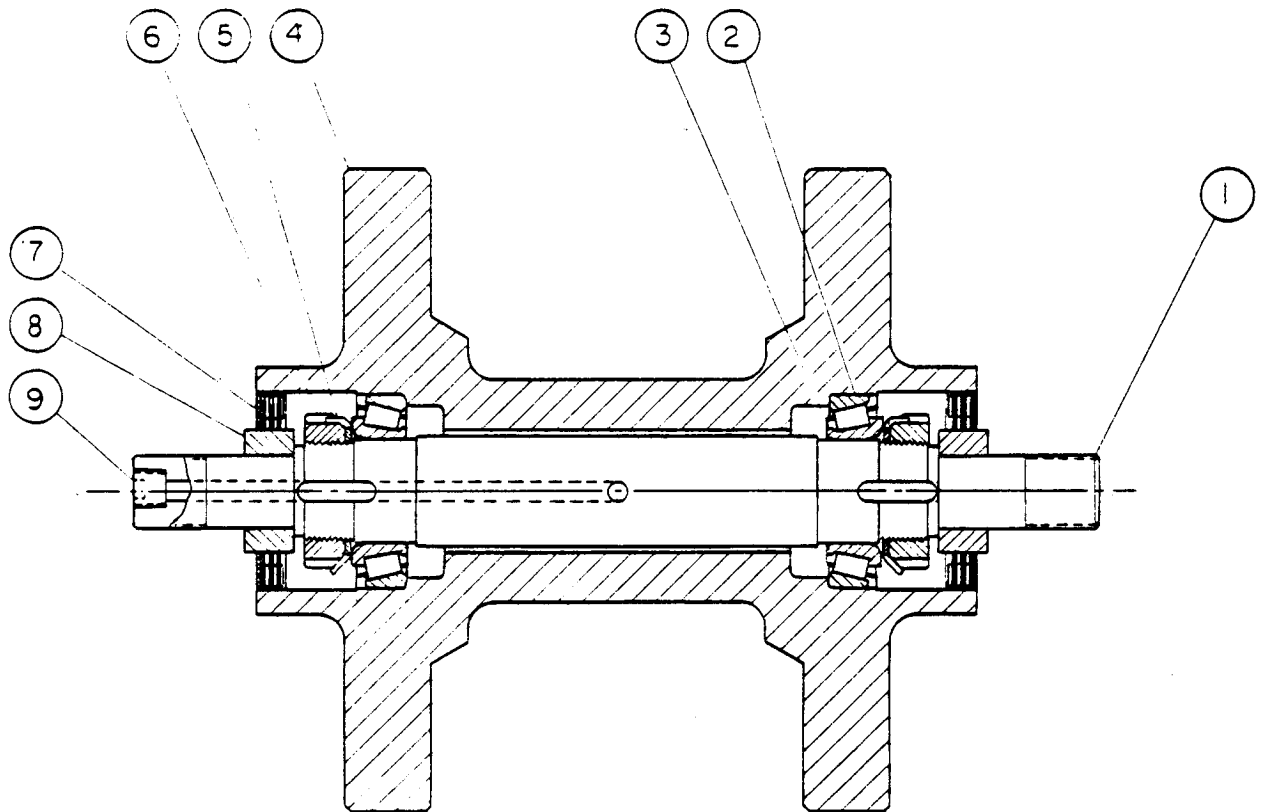


**TRACK ASSEMBLY  
LOADER & DOZER  
S/N LC30-0086 AND UP  
S/N DC30-0501 AND UP**



Item No.	Part No.	LC-30 Qty.	DC-30 Qty.	Description	Item No.	Part No.	LC-30 Qty.	DC-30 Qty.	Description
1	627118-3	28	28	Nut, Lock 3/4-16NF Thin	12	580395-21	1	1	Bracket, L.H. Track Suspension (Out)
2	580395-23	1	1	Bracket, L.H. Track Suspension (In)	13	580395-22	1	1	Bracket, R.H. Track Suspension (Out)
3	580395-24	1	1	Bracket, R.H. Track Suspension (In)	14	580062		1	Grouser Pad
4	580269-22		1	Track Ass'y., Grouser Pad (30)		580063	1		Street Pad
	580268-22	1		Track Ass'y., Street Pad (30)	15	585123	2	2	Nut, Hex 1-8NC S.S.
5	580678-21	10	10	Roller Ass'y. Bottom	16	585124	2	2	Nut, Jam, 1-8NC S.S.
6	585230-1	2	2	Rivet, Track Chain	17	580226-22	2	2	Frame Idler
7	580679-21	2	2	Roller Ass'y., Carrier	18	580051	4	4	Plate, Idler Retainer
8	580680-21	2	2	Idler Assembly	19	580307-51	1		Track Pad Replacement, Street Pad
9	G10-506	8	8	Screw, Hex. HD. Cap 1/2-13 NC X 1 1/2 LG.		580307-52		1	Track Pad Replacement, Grouser Pad
10	585235-2	56	56	Washer, Belleville Spring	20		8	8	Washer, Lock 1/2
11	580642-21	2	2	Tension Guide	21	M14-12	2	2	Washer Flat, 3/4 Large

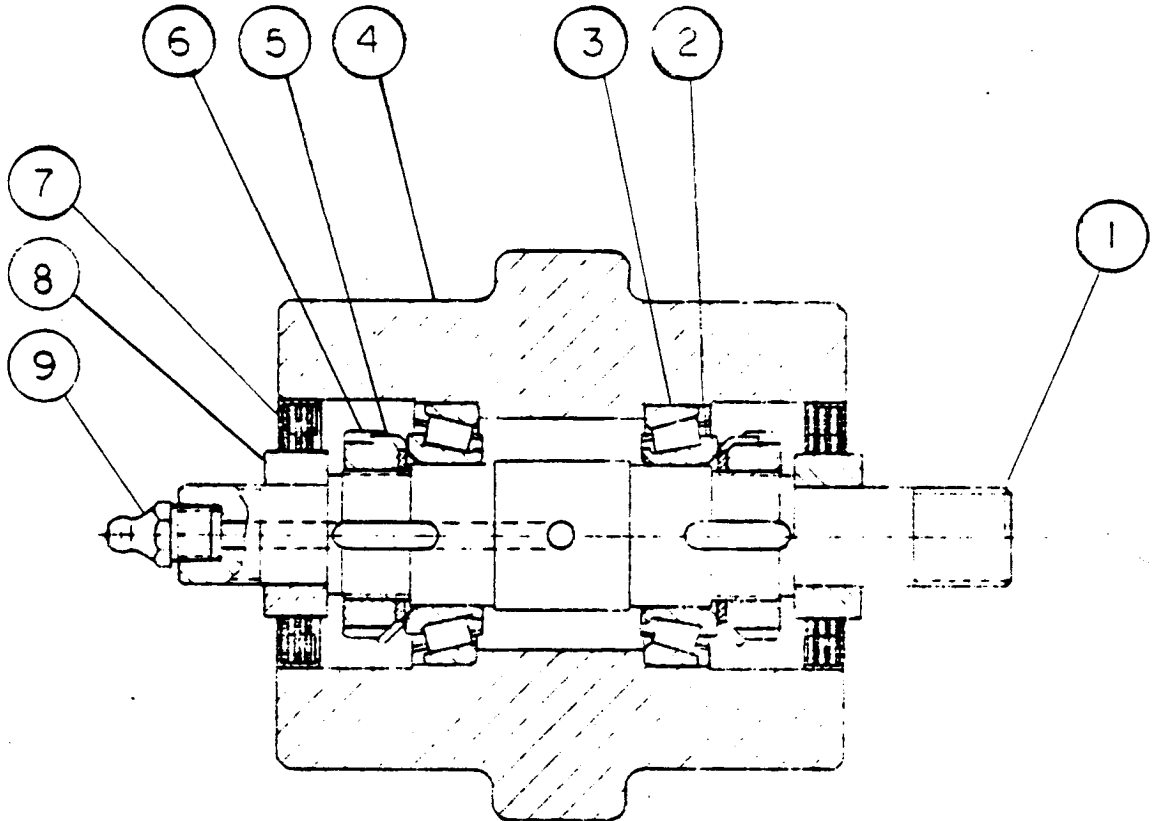
**ROLLER, TRACK  
LOADER & DOZER  
S/N LC30-0001 AND UP  
S/N DC30-0501 AND UP**



Item No.	Part No.	Qty.	Description
1	580057	1	Axle, Track Roller
2	585030-1	2	Bearing, Cup
3	585029-1	2	Bearing, Cone
4	580054	1	Roller, Track
5	585250-1	2	Washer, Bearing Lock

Item No.	Part No.	Qty.	Description
6	585251-1	2	Nut, Bearing Lock
7	585020-1	2	Seal
8	580056	2	Spacer
9	272977	1	Plug, Hex. Socket, 1/8 NPT

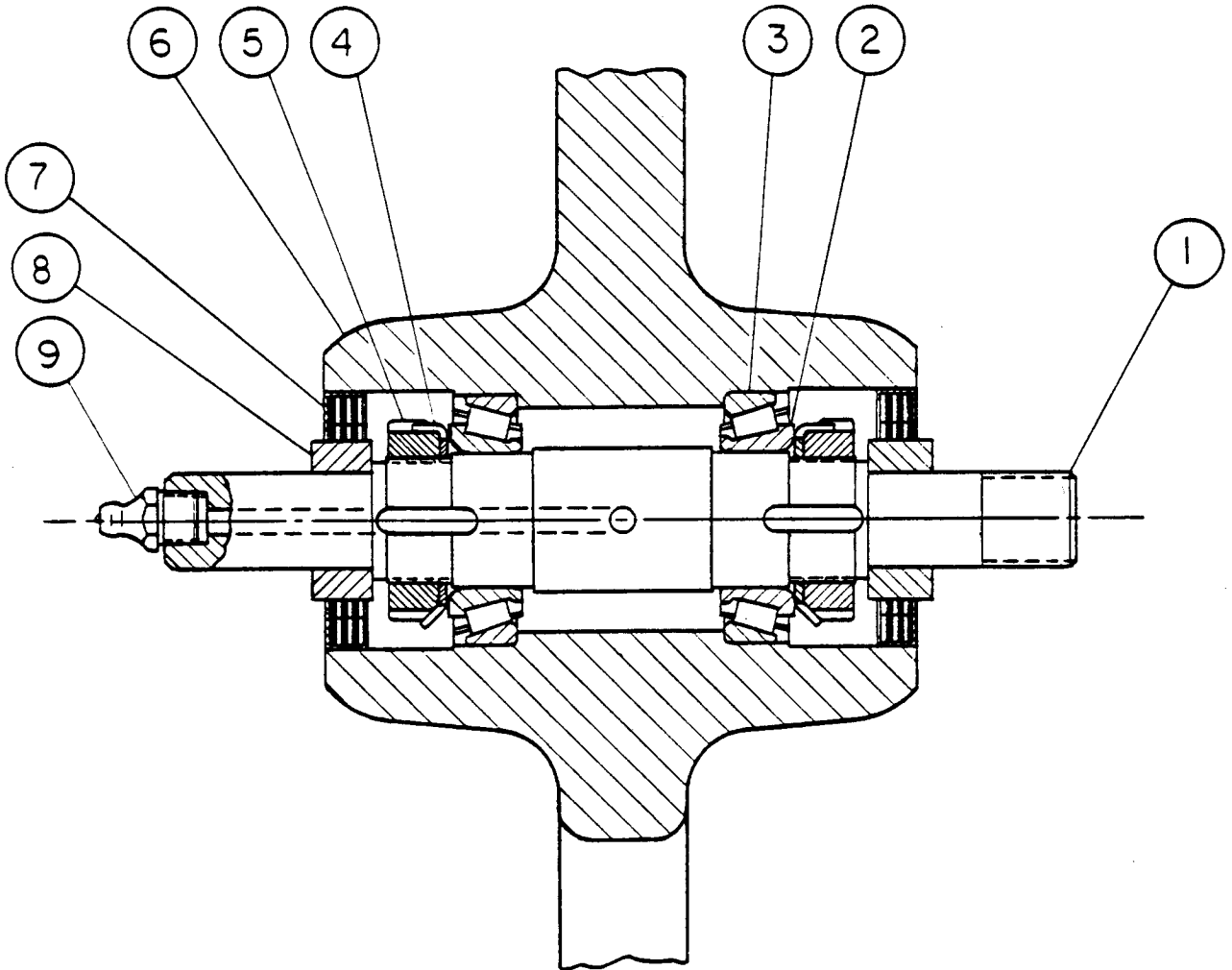
**ROLLER CARRIER  
LOADER & DOZER  
S/N LC30-0001 AND UP  
S/N DC30-0501 AND UP**



Item No.	Part No.	LC-30 DC-30 Qty.	Description
1	585157	1	Axle, Carrier Roller
2	585029-1	2	Bearing Cone
3	585030-1	2	Bearing Cup
4	580055	1	Roller, Carrier
5	585250-1	2	Washer, Bearing Lock

Item No.	Part No.	LC-30 DC-30 Qty.	Description
6	585251-1	2	Nut, Bearing Lock
7	585020-1	2	Seal
8	580056	2	Spacer
9	127800	1	Fitting, Lube, 1/8 NPT

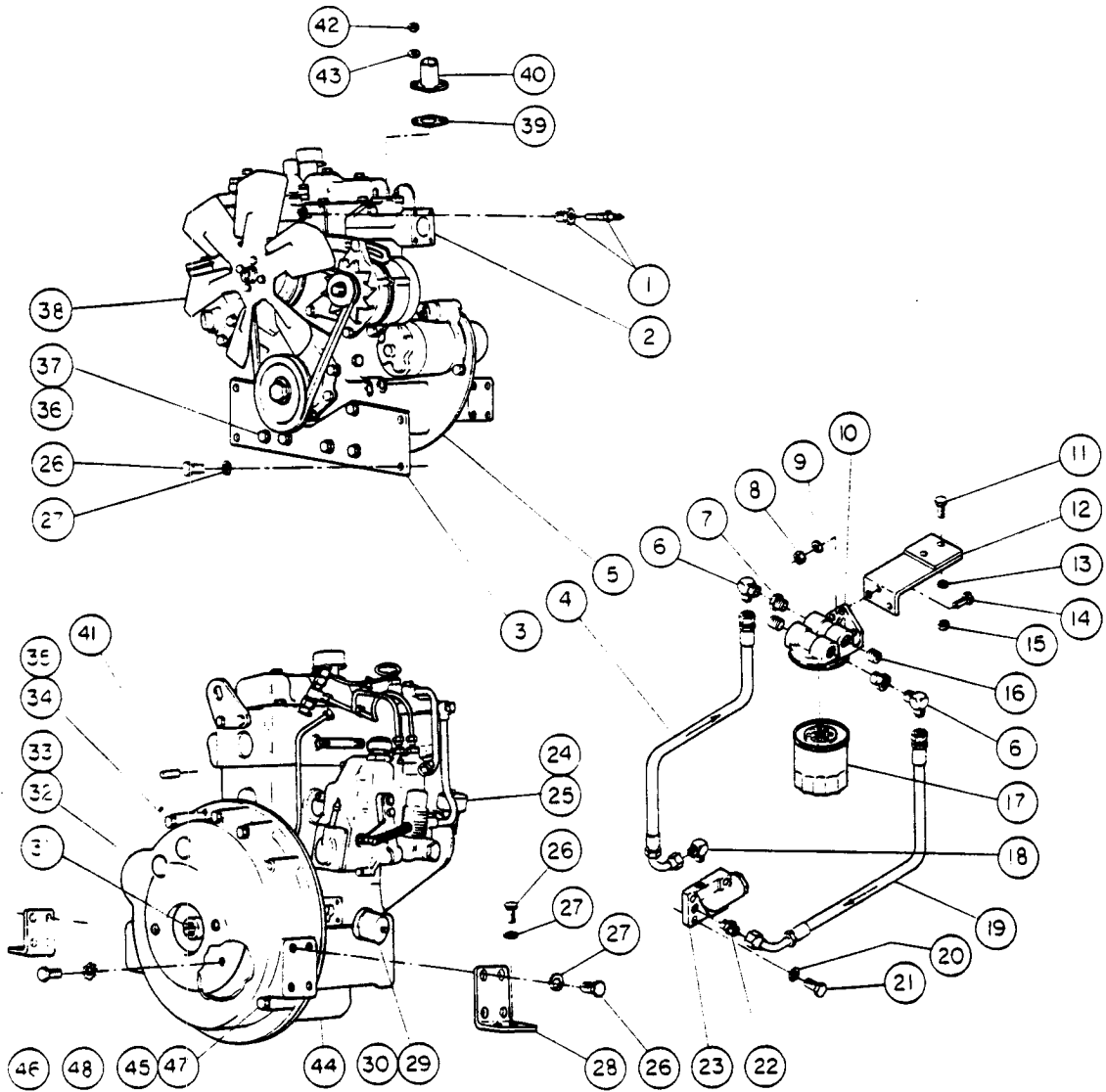
**IDLER FRONT  
LOADER & DOZER  
S/N LC30-0001 AND UP  
S/N DC30-0501 AND UP**



Item No.	Part No.	LC-30 DC-30 Qty.	Description
1	580058	1	Axle, Front Idler
2	585029-1	2	Bearing, Cone
3	585030-1	2	Bearing, Cup
4	585250-1	2	Washer, Bearing Lock
5	585251-1	2	Nut, Bearing Lock

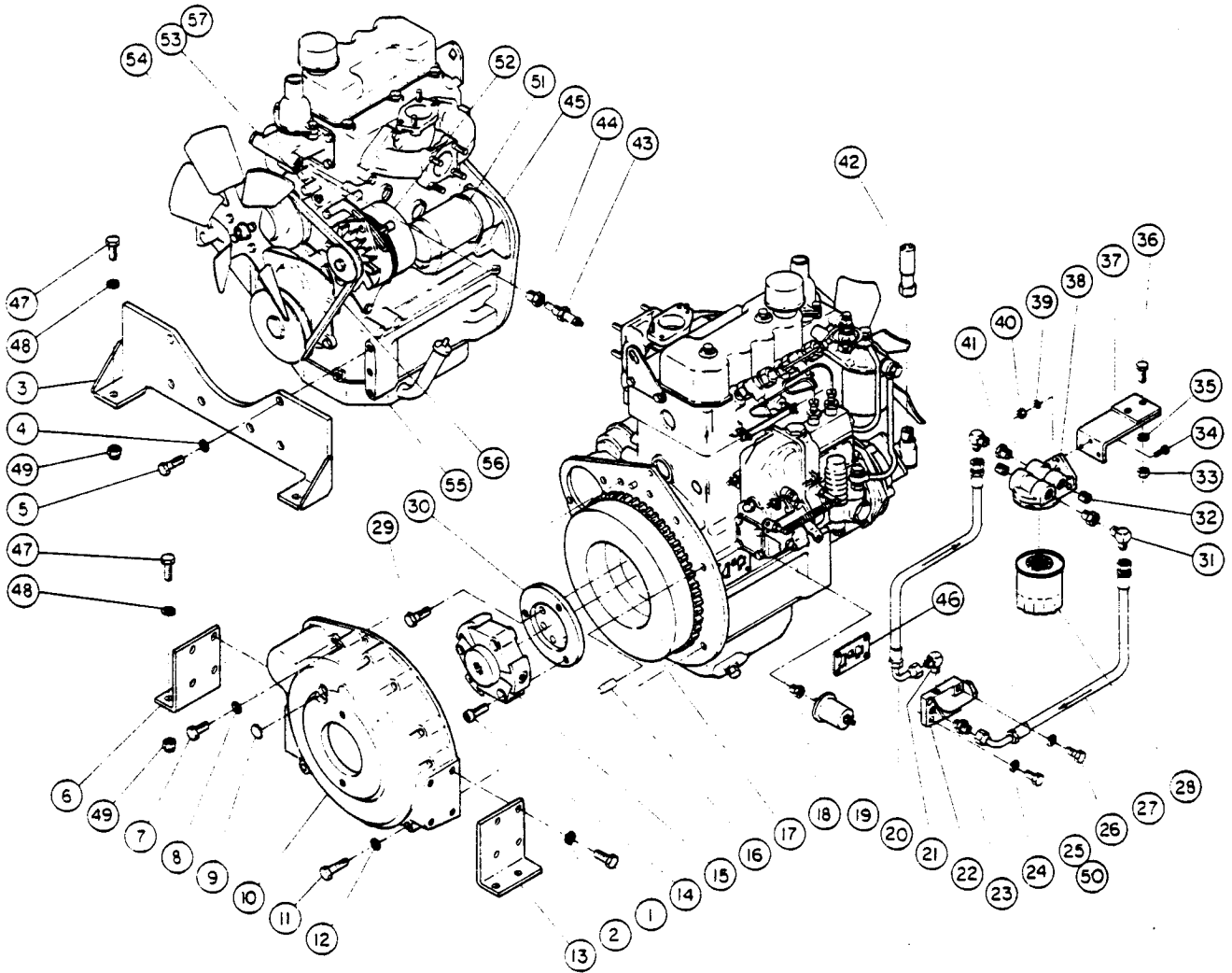
Item No.	Part No.	LC-30 DC-30 Qty.	Description
6	580367-2	1	Wheel, Front Idler
7	585020-1	2	Seal
8	580056	2	Spacer
9	127800	1	Fitting, Lube, 1/8 NPT

# ENGINE ASSEMBLY LOADER S/N LC30-0001 THRU LC30-0085



Item No.	Part No.	LC-30 Qty.	Description	Item No.	Part No.	LC-30 Qty.	Description
1	585151	1	Sending Unit, Water Temp.	24	585116	1	Sender
2	585055	1	Exhaust Manifold	25	585117	1	Drive Tip
3	580052	1	Mount, Engine-Front	26		16	Bolt, Hex Cap 1/2"-13NC x 1 1/4"
4	540262-4	1	Hose Assembly, #8 x LG 22 1/2"	27		16	Washer, Lock 1/2"
5	585053	1	Plate, Rear Engine	28	580044	2	Mount, Engine-Rear
6	A14-8	2	Elbow 90°, #8 JIC x #8 NPT	29	536207	1	Sending Unit, Oil Pressure
7	B10-4	2	Bushing	30	A65-46	1	Adapter, Oil Pressure Sender
8		3	Nut, Hex 1/4"-20NC	31	<del>585104</del>	1	<del>Plate, Drive</del> (Not Available)
9		3	Washer, Lock 1/4"	32	585052	1	Flywheel
10	585069	1	Base, Filter	33	585103	1	Housing, Flywheel
11		2	Bolt, Hex, Cap 3/8"-16NC x 1 1/4"	34	F23-1070	3	Bolt, Hex Cap M10 x 1.25 x 70mm
12	580187-21	1	Bracket, Remote Oil Filter Mtg.	35	11500192	3	Lockwasher, M10
13		2	Washer, Lock 3/8"	36	F21-1425	6	Bolt, Hex Cap M14 x 25mm
14		3	Bolt, Hex Cap 1/4"-20NC x 1"	37	11500194	6	Washer, Lock 14mm
15		2	Nut, Hex 3/8"-16NC	38	585023	1	Fan Assembly, Pusher
16		2	Plug, Pipe 1/2" NPT	39	540288-1	1	Gasket, Intake Manifold Adapter
17	R10-1	1	Filter, Oil	40	580229	1	Adapter, Intake Manifold
18	540290-1	1	Elbow 90°, #8 JIC x #6 NPT	41	580302	1	Pin, Dowel-Flywheel Housing
19	540262-5	1	Hose Assembly, #8 x 36"	42	11501051	2	Nut, Hex-8mm
20	11500191	4	Lockwasher, M8	43	11500191	2	Washer, Lock-3mm
21a	F21-845	3	Bolt, Hex Cap M8 x 1.25 x 45mm	44	585056	1	Base Engine
21b	F21-850	1	Bolt, Hex Cap M8 x 1.25 x 50mm	45	F21-12120	2	Bolt, Hex Cap M12 x 1.75 x 120mm
22	A13-54	1	Adapter, #8 JIC x #6 NPT	46	F23-1225	6	Bolt, Hex Cap M12 x 1.50 x 25mm
23a	585068	1	Adapter, Engine Block	47	11500193	2	Lockwasher, M12
23b	585067	1	Gasket, Included with Item #23	48		6	Lockwasher, Star 1/2"

**ENGINE ASSEMBLY  
LOADER & DOZER  
S/N LC30-0086 AND UP  
S/N DC30-0501 AND UP**



Item No.	Part No.	LC-30 DC-30 Qty.	Description	Item No.	Part No.	LC-30 DC-30 Qty.	Description
1		8	Screw, Hex. HD. Cap ½-13NC X 1¼ LG.	16	580302	1	Pin Power
2		8	Washer, Split Lock ½	17	580438-1	1	Flywheel Modification
3	580405-21	1	Engine Mount	18	A65-46	1	Connector, Str.
4	11500194	6	Washer, Split Lock, 14mm	19	585212-1	1	Sender, Oil Pressure
5	F21-1425	6	Screw, Hex. HD. Cap. M14 X 25 mm	20	540317-4	1	Hose Assembly #8 X 30 LG.
6	580392-1	1	Mount, Flywheel Housing L.H.	21	A14-90	1	Elbow 90° Mod. 3/8 NPT X ¼ JIC
7	F23-1070	3	Screw, Hex HD. Cap. M10 X 1.25 X 70 mm	22	585068	1	Adapter, Engine Block
8	11500192	3	Washer, Split Lock, M10	23	A13-54	1	Adapter, Str. #8JIC X #6NPT
9	L12-1	1	Plug Bottom	24	11500191	4	Washer, Split Lock, M8
10	585178-1	1	Housing, Flywheel	25	F21-830	2	Screw Hex HD. Cap M8 X 1.25 X 30mm
11	F21-1220	2	Screw, Hex. HD. Cap. M12 X 1.75 X 120mm	26	F21-850	1	Screw Hex HD. Cap M8 X 1.25 X 50mm
12	11500193	2	Washer, Split Lock M12	27	540317-5	1	Hose Assembly #8 X 36 LG.
13	580392-2	1	Mount Flywheel Housing R.H.	28	R10-1	1	Filter, Oil
14		6	Screw, Socket HD. Patch Lock	29	F25-1240	6	Screw, Hex HD. Cap M12 X 1.50 X 40mm
15	585217-23	1	Coupling Centaflex	30	580437-1	1	Adapter Plate

**ENGINE ASSEMBLY  
LOADER & DOZER  
S/N LC30-0086 AND UP  
S/N DC30-0501 AND UP**

Item No.	Part No.	LC-30 DC-30 Qty.	Description	Item No.	Part No.	LC-30 DC-30 Qty.	Description
31	A14-8	2	Elbow 90° #8JIC X #8NPT		585056-2	1	Base Engine (Dozer only)
32		2	Plug, Pipe, 1/2NPT	46	585067	1	Gasket
33		2	Nut Hex 3/8-16NC	47		6	Screw, Hex. HD. Cap, 1/2-13UNC X 1/4 LG.
34		3	Screw, Hex HD. Cap. 1/4-20NC X 1 LG.	48		6	Washer, Flat, 1/2 Small
35		2	Washer, Split Lock 3/8	49	K10-8	6	Nut, Elastic Stop, 1/2-13UNC
36		2	Screw, Hex HD. Cap. 3/8-16NC X 1 1/4 LG.	50	F21-825	1	Screw, Hex. HD. Cap, M8X1.25X25mm
37	580451-21	1	Bracket, Oil Filter Mount				
38	585069	1	Base, Filter				
39		3	Washer, Split Lock 1/4	51	585056-81	1	Starter Assembly 1.4KW
40		3	Nut, Hex 1/4-20NC	52	585056-82	1	Generator Assembly 12V-35A
41	B10-4	2	Bushing, 1/2NPT X 3/8NPT	53	585056-71	1	Water Pump Assembly
42	585206-21	1	Sender, Tach.	54	585056-72	1	Fan Blade Assembly (15")
43	585213-1	1	Sender, Temp.	55	585056-67	1	Oil Pump Assembly
44	B10-3	1	Bushing 3/8NPT X 1/8NPT	56	585277-1	1	Fan Belt
45	585056-1	1	Base Engine (Loader only)	57	585276-1	1	Thermostat