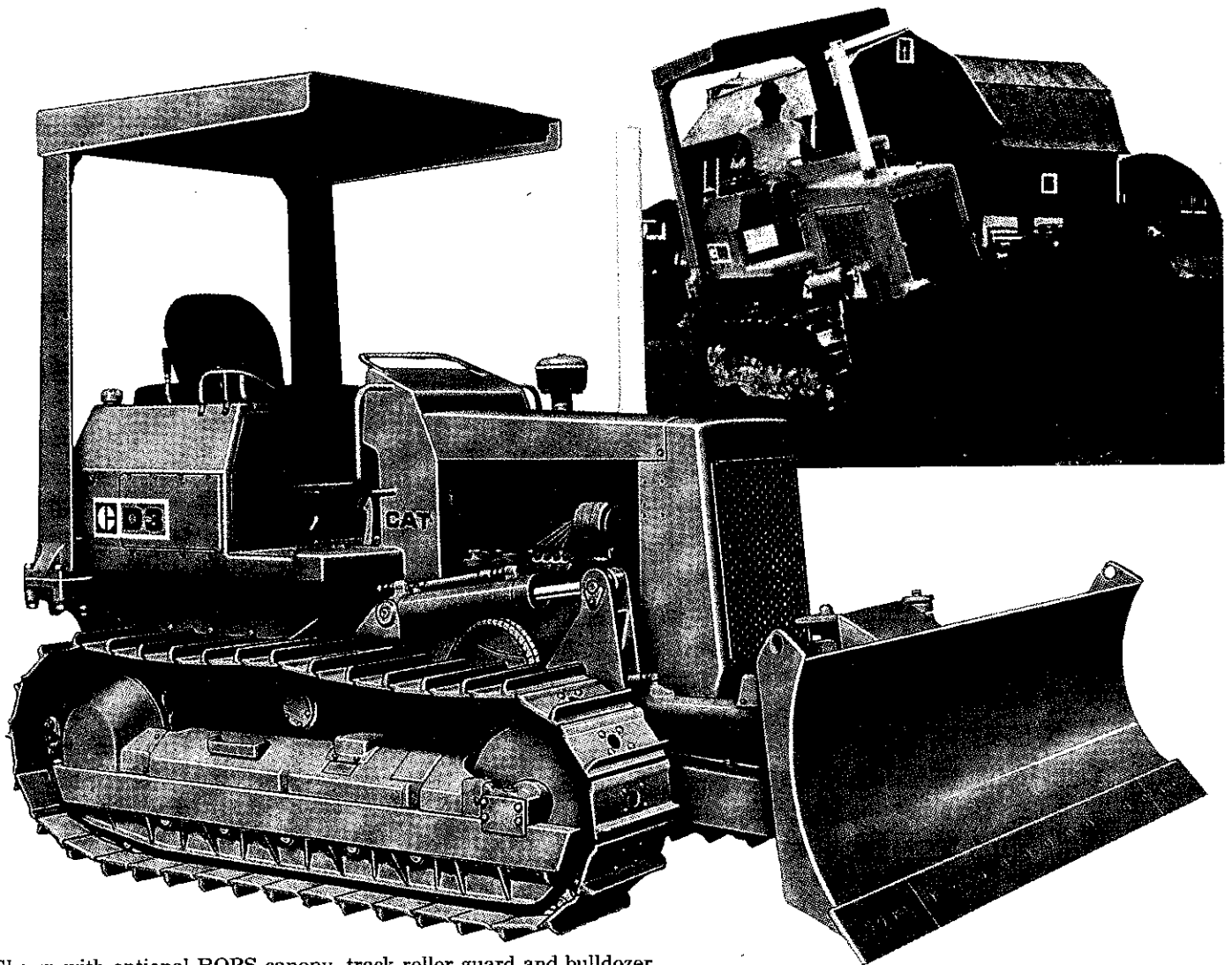


CATERPILLAR

D3 Track-type Tractor



3961 First Pt. Nov. 75-113-1

Shown with optional ROPS canopy, track roller guard and bulldozer.

Summary of features

- 62 flywheel horsepower (46 kW) Cat diesel engine.
- Planetary-type power shift transmission provides on-the-go shifting . . . three speeds forward, one reverse.
- Pedal steering frees operator's hands for transmission and dozer controls.
- Sealed Track extends pin and bushing life. Track rollers, carrier rollers and idlers are Lifetime-Lubricated.
- Power angling and tilt dozer provides versatility needed in utility work.

Caterpillar engine



Flywheel horsepower @ 2400 RPM	62
Kilowatts	46

(Kilowatts is the International System of Units equivalent of horsepower.)

The net power at the flywheel of the vehicle engine operating under SAE standard ambient temperature and barometric conditions, 85° F. (29° C) and 29.38" (995 mbar) Hg., using 35 API gravity fuel oil at 60° F. (15.6° C). Vehicle engine equipment includes fan, air cleaner, water

pump, lubricating oil pump, fuel pump and alternator. Engine will maintain specified flywheel power up to 7,500 ft. (2300 m) altitude.

Cat 4-stroke-cycle diesel Model 3204 with four cylinders, 4.5" (114 mm) bore, 5" (127 mm) stroke and 318 cu. in. (5.2 litres) displacement.

Precombustion chamber fuel system with individual adjustment-free injection pumps and valves.

Cam-ground and tapered aluminum alloy pistons with 2-ring design. Steel-backed aluminum bearings. Heat-treated crankshaft journals. Pressure lubrication with full-flow filtered and cooled oil. Dry-type air cleaner with primary and safety elements.

Uses economical No. 2 fuel oil (ASTM Specification D396), often called No. 2 furnace or burner oil, with a minimum cetane rating of 35. Premium quality diesel fuel can be used but is not required.

12-volt direct electric starting system with glow plugs for preheating precombustion chambers. One Cat 12-volt, 172-amp-hour battery. Optional low temperature electric starting system available.

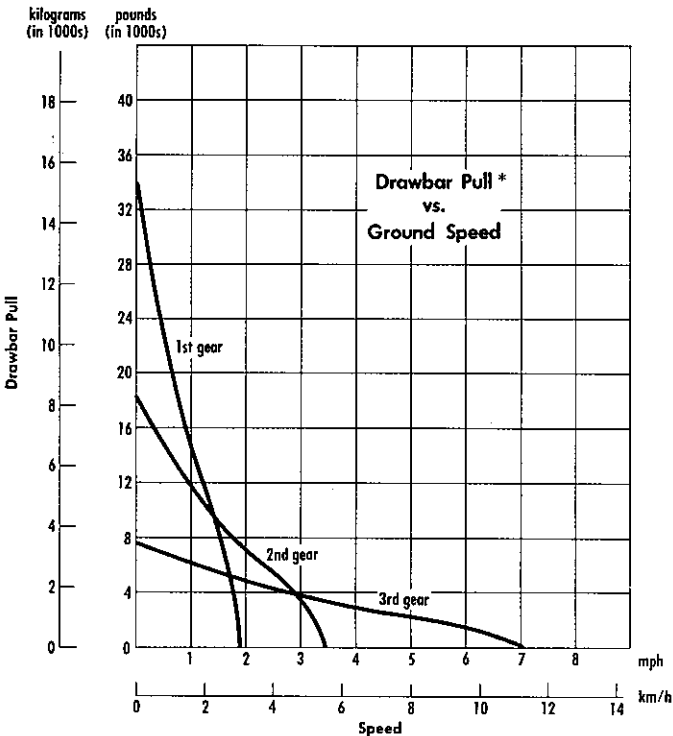
D3

Track-type Tractor

transmission

Planetary-type power shift . . . three speeds forward, one reverse . . . with high-torque capacity oil clutches. Permits speed and direction changes under full load. Single-stage torque converter integral with power shift transmission.

Speeds:	1st	2nd	3rd
Forward, MPH:	1.9	3.5	7.0
(km/h):	(3.1)	(5.6)	(11.3)
Reverse, MPH:		3.2	
(km/h):		(5.1)	



*Usable pull will depend upon weight and traction of equipped tractor.

steering and braking

Steering and braking controlled by a foot pedal for each track. Third pedal brakes both tracks, locks down for parking. Clutches are spring-actuated, hydraulically released, multiple discs.

final drives

Single-reduction final drive gears.

track roller frame

Box-section construction. Lifetime-Lubricated rollers and idlers.
Number of rollers (each side) 5

track

Sealed Track extends pin and bushing life. Hydraulic track adjusters standard.
Number of shoes (each side) 36
Width of standard shoe 12" (305 mm)
Length of track on ground 72.4" (1840 mm)
Ground contact area with
12" (305 mm) shoes 1,740 sq. in. (1.12 m²)
Gauge 56" (1420 mm)

hydraulic systems

Complete system consists of pump, tank, filter, valves, lines and linkage. The four optional hydraulic systems include:

- Two valve Mechanical angle and power tilt bulldozer
- Three valve Power angle and power tilt bulldozer
- Three valve Mechanical angle and power tilt bulldozer and ripper
- Four valve Power angle and power tilt bulldozer and ripper

Pump:

- Output @ 1000 psi (69 bar) 14.5 gpm (55 litres/min)
- RPM @ rated engine speed 2640
- Relief valve setting 2500 psi (172 bar)
- Drive (constant power) Geared from auxiliary engine timing gear train

Control valve (spool-type) positions:

- Lift cylinders Raise, lower, hold, float
- Tilt cylinder Left, right, hold
- Angle cylinders Left, right, hold
- Ripper cylinder Raise, lower

Filter Full flow

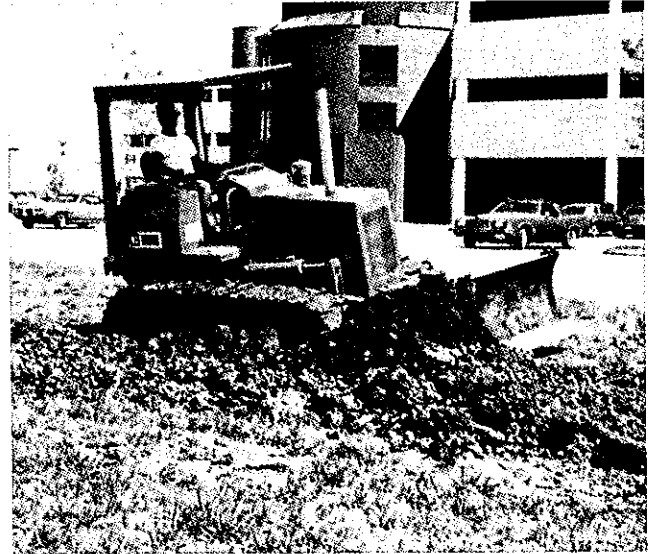
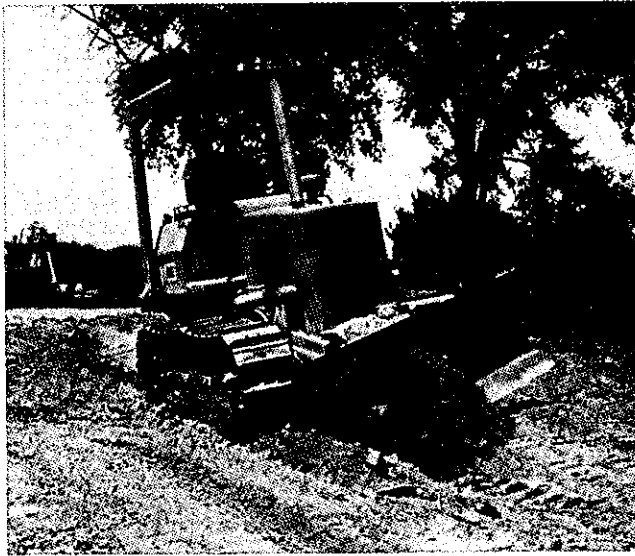
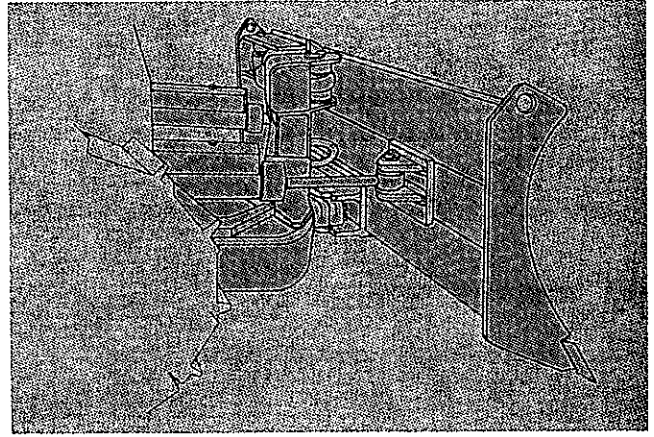
service refill capacities

	U.S. Gallons	(Litres)
Fuel tank	30	(114)
Cooling system	6.5	(24.6)
Crankcase	3	(11.4)
Transmission	4.5	(17)
Final drives, each	2.5	(9.5)
Hydraulic system (total)	15	(57)
Hydraulic tank	8	(30.3)

weight (approximate)

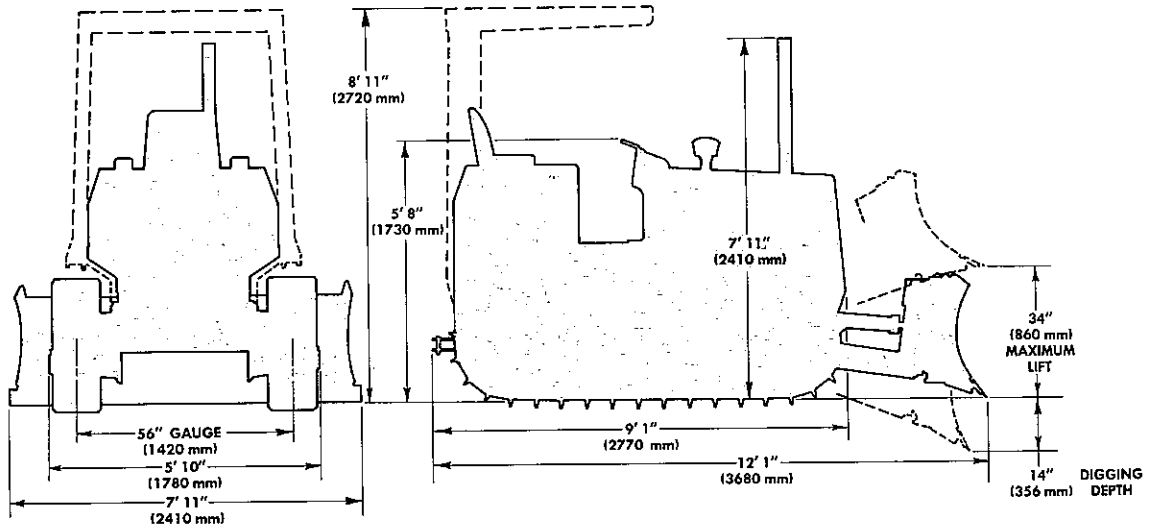
Shipping weight with 5% fuel in tank, dozer and hydraulics 12,700 lb. (5800 kg)

Optional power angling and tilt dozer makes it easy to grade, backfill ditches, landscape or spread fill. You can angle it 25° left or right. Tilt it 8½°. All with two simple controls.



dimensions

Ground clearance 13.6" (345 mm)
 For shipping dimensions, add 2" (51 mm) to vertical dimensions to allow for grouser height.




standard equipment

12-volt direct electric starting. Alternator, 40 amp. Fuel priming pump. Dry-type air cleaner. Pre-cleaner. Muffler. Blower fan. Adjustable seat. Instrument panel lights. Lifetime-Lubricated rollers and idlers. Sealed

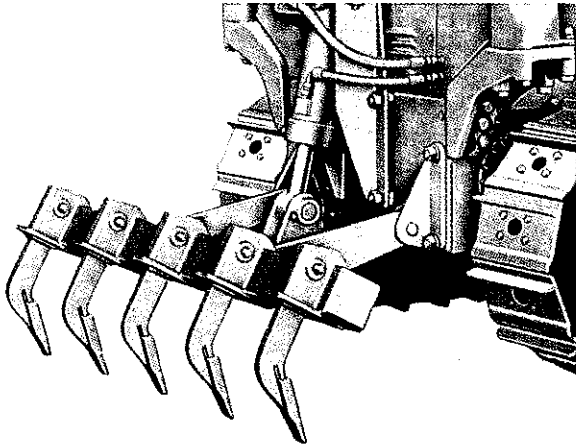
Track. Hydraulic track adjusters. Pedal steering. Planetary power shift transmission. Retrieval hitch. 5-roller track frame. 12" (305 mm) single grouser tracks (36-section).


optional equipment

(with approximate installed weights)

Accelerator/decelerator	10 lb. (5 kg)
Back-up alarm	20 lb. (9 kg)
Bulldozers:	
Power angle and tilt	2,350 lb. (1070 kg)
Mechanical angle and power tilt	2,250 lb. (1020 kg)
Cab, ROPS (includes seat belt and windshield wiper and washer)	1,280 lb. (580 kg)
Canopy, ROPS (includes ROPS mounting and seat belt)	770 lb. (349 kg)
Defroster fan	3 lb. (1 kg)
Drawbar, swinging	125 lb. (57 kg)
Engine enclosures	35 lb. (16 kg)
Fan, suction	No increase
Guards:	
Brush (for use with ROPS canopy):	
Rear	40 lb. (18 kg)
Side	185 lb. (84 kg)
Crankcase	145 lb. (66 kg)
Radiator, hinged, heavy duty	50 lb. (23 kg)
Normal service	10 lb. (5 kg)
Track guiding, ends only	45 lb. (20 kg)
Track roller, full length	205 lb. (93 kg)

Heater	20 lb. (9 kg)
Horn	5 lb. (2 kg)
Hydraulic arrangements: 2 valves	120 lb. (54 kg)
3 valves	135 lb. (61 kg)
4 valves	150 lb. (68 kg)
Lighting systems:	
3 lights - 2 front, 1 rear	25 lb. (11 kg)
6 lights - 2 front, 2 rear, 2 cab	40 lb. (18 kg)
Logging sweep	185 lb. (84 kg)
Precleaner with prescreener	3 lb. (1 kg)
Pull hook (requires crankcase guard)	30 lb. (14 kg)
Rear power take-off	35 lb. (16 kg)
Ripper (includes 3 teeth and hydraulic cylinder)	710 lb. (322 kg)
Ripper teeth, additional, each	27 lb. (12 kg)
Seat belt	6 lb. (3 kg)
Starting system, low temperature	35 lb. (16 kg)
Suspension seat	5 lb. (2 kg)
Tracks, pair, 36-section:	
14" (356 mm) single grouser	130 lb. (59 kg)
14" (356 mm) triple grouser	230 lb. (104 kg)
16" (406 mm) single grouser	260 lb. (118 kg)
Tool kit	11 lb. (5 kg)
Vandalism protection group	10 lb. (5 kg)


D3 Ripper

Ripper breaks up rocky material, frozen ground and compacted haul roads for easier dozing. Use up to five shanks.

Overall machine length, tip of blade to beam raised	11' 8" (3560 mm)
Beam lowered	11' 1" (3380 mm)
Maximum penetration	10" (254 mm)
Shipping weight - ripper with 3 teeth and hydraulic cylinder	710 lb. (322 kg)

Materials and specifications are subject to change without notice.