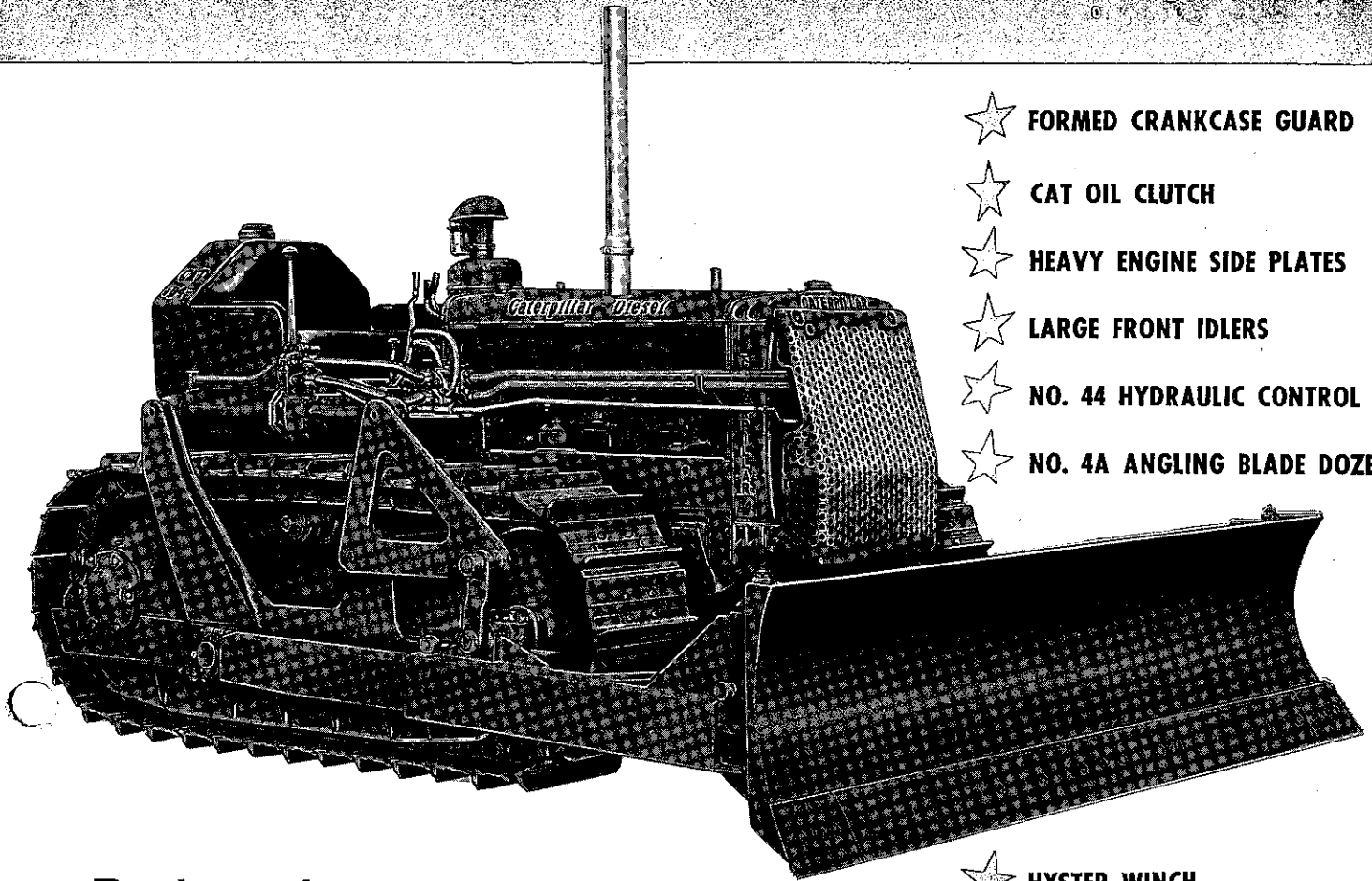


THE CAT* D4 TRACTOR WITH 5-ROLLER TRACK FRAMES



- ★ FORMED CRANKCASE GUARD
- ★ CAT OIL CLUTCH
- ★ HEAVY ENGINE SIDE PLATES
- ★ LARGE FRONT IDLERS
- ★ NO. 44 HYDRAULIC CONTROL
- ★ NO. 4A ANGLING BLADE DOZER

**Packaged
workpower for
Logging—
Construction—
Other Rugged Jobs**

- ★ HYSTER WINCH
- ★ HEAVY-DUTY EQUALIZER SPRING
- ★ 5-ROLLER TRACK FRAMES
- ★ TRACK ROLLER GUARDS

Here's a popular D4 Tractor arrangement that's built for heavy-duty applications. In addition to the many outstanding values which are built into the basic D4, this efficient "package," equipped with attachments and optional features, offers the excellent stability afforded by the extra long track roller

frames and the large front idlers. It also has an all-purpose angling blade bulldozer which is powered by the long lived No. 44 Hydraulic Control...a powerful Hyster winch that makes the unit ideal for logging applications and heavy-duty guards for extra protection.

*Call your Caterpillar Dealer today.
Ask him about the many arrangements that are available
to do your tasks easier and more efficiently.*

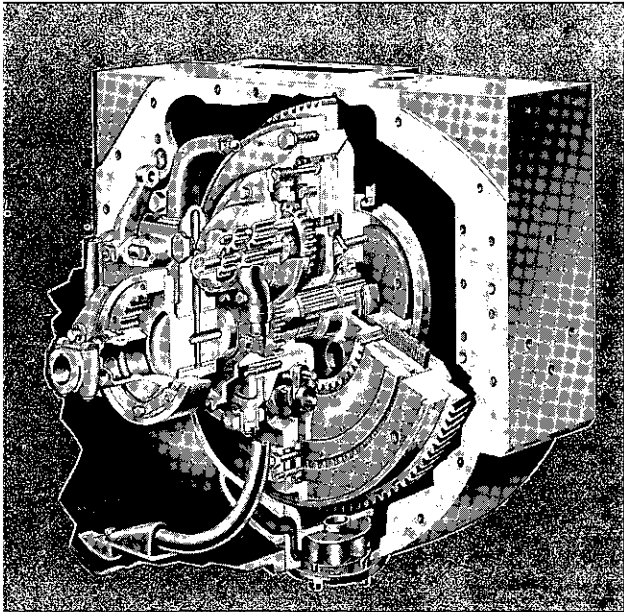
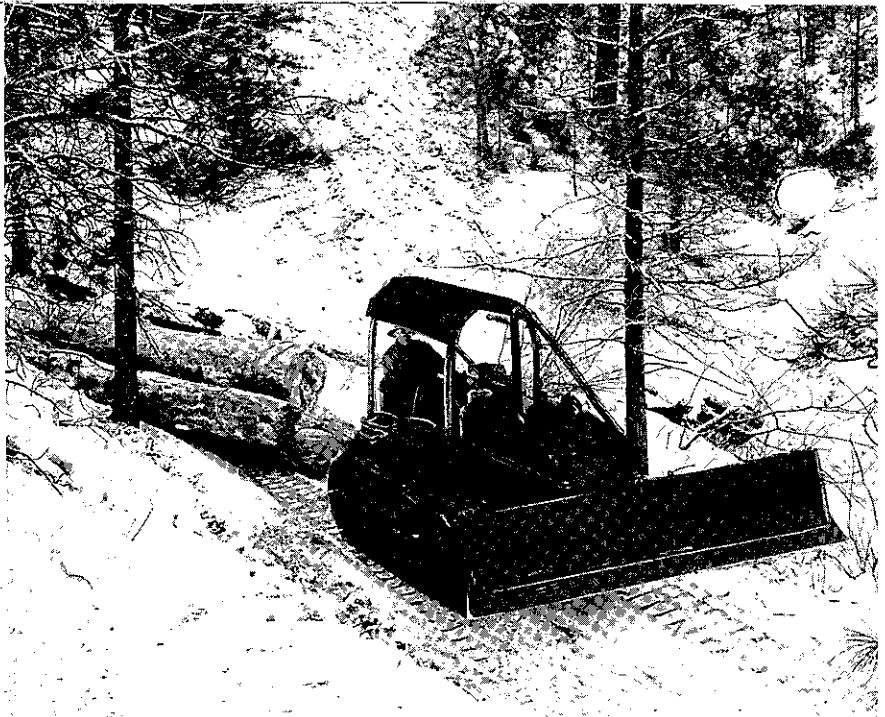
Caterpillar Tractor Co., Peoria, Illinois, U.S.A.

CATERPILLAR*

Caterpillar and Cat are Registered Trademarks of Caterpillar Tractor Co.

Ernest Moore, Princeville, Oregon, owns a D4 equipped similar to the one shown on the other side of this sheet. He says, "Couldn't ask for anything better. Two days ago the temperature was 21° below zero but my D4 started right off. It's the easiest piece of machinery I've ever run and it sure stands a lot of abuse."

Mr. Moore is shown here skidding 1200 feet of ponderosa pine from the woods to a landing near Mill Creek. He has skidded as much as 3100 feet at one time with his D4. Also used for general ranch work, Moore's D4 provides the proof of versatility.



Exclusive Oil-Type Clutch

Typical of the many features which make this arrangement a top producer is the optional oil-type flywheel clutch. Exclusive with Caterpillar-built machines, this unit practically eliminates clutch replacement.

Here's how it works. A thin film of oil separates clutch facings until the last revolution or two before engagement. This affords long life for the metallic-faced clutch discs by cooling friction faces and reducing wear until it's almost negligible.

BRIEF SPECIFICATIONS

D4 as pictured on reverse side of this sheet.
All specifications not shown are same as the standard D4.

TRACTOR:

Horsepower (same as std. D4) rated at sea level:
 Drawbar.....50
 Belt.....57
 Clutch, flywheel.....Cat oil-type

GUARDS:

Crankcase.....Formed
 Track roller.....Heavy-duty
 Idlers, front.....Large
 Side plates, engine.....Heavy-duty
 Spring, equalizer.....Heavy-duty

Tracks, 5-roller frame:

Number of shoes each side.....35
 Width of standard track shoe.....13"
 Length of tracks on ground.....6'3/8"
 Area of ground contact, sq. in.....1,880

No. 4A BULLDOZER, consists of blade, C-frame, braces, trunnions, cylinder brackets, cylinders and lower radiator guard:
 Height.....2'3 1/2"
 Blade angle, to either side.....25°

No. 44 HYDRAULIC CONTROL:

Pump housing (sealed reservoir for fluid) encloses
 Pump, control valve and oil filter
 Pump (vane-type, front-mounted) output.....40 GPM
 Control valve (spool-type, single valve) positions
 Raise, lower, hold, float

WINCH:

Maximum line pull, pounds.....17,020

OVER-ALL DIMENSIONS (equipped as shown on other side):

Length: 60" Gauge 44"
 Blade straight.....12'7" 12'7"
 Blade angled.....14'6" 14'2"
Width:
 Blade straight.....9'5" 7'9"
 Blade angled.....8'7 1/8" 7'1 1/8"
 Height, excluding exhaust and precleaner.....5'9 3/8" 5'9 3/8"

WEIGHT, shipping (equipped as shown on other side), approximate pounds.....16,795 16,197

SPECIFICATIONS ARE SUBJECT TO CHANGE WITHOUT NOTICE