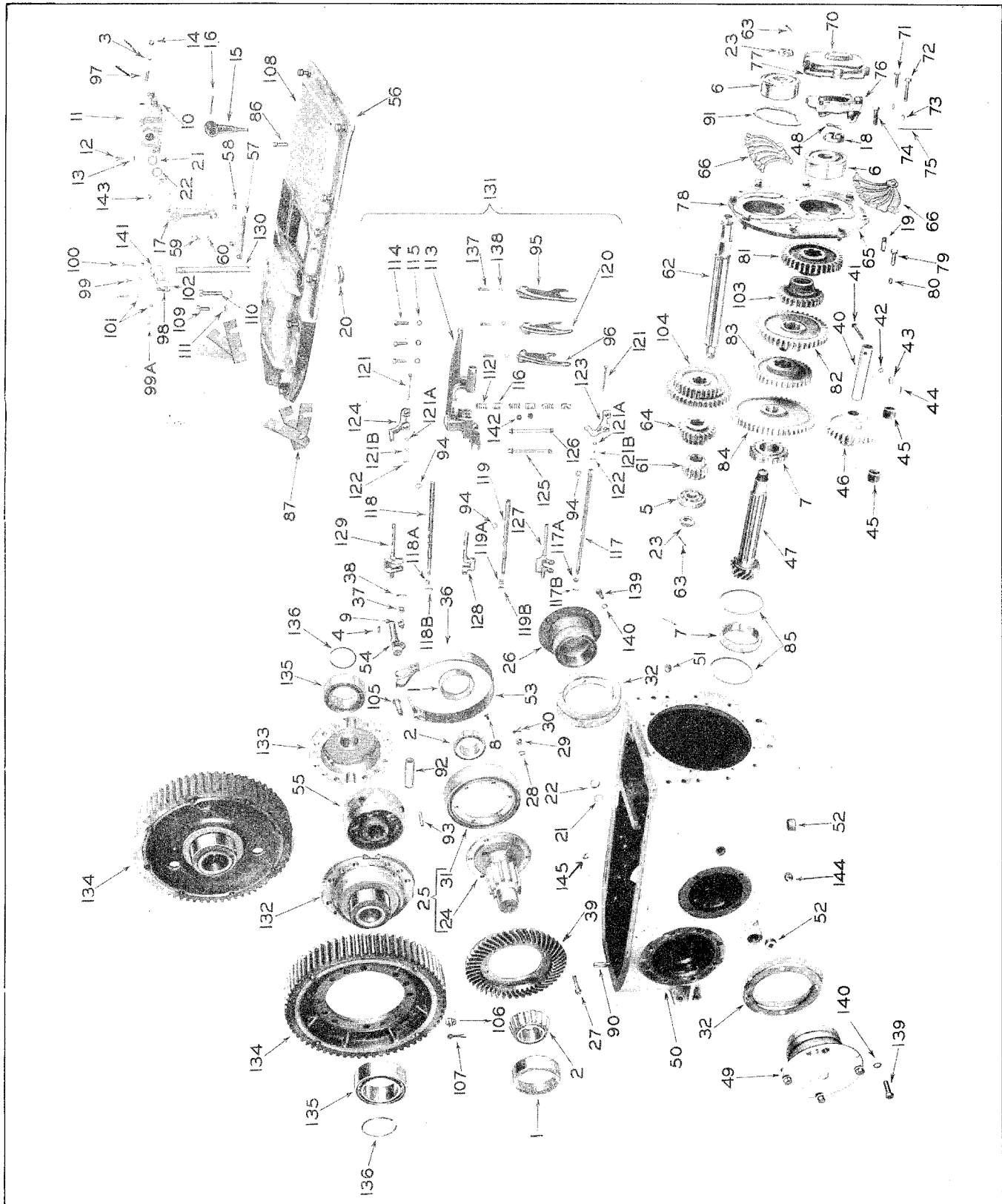


# ALWAYS GIVE MODEL AND SERIAL NUMBER

## TRANSMISSION AND FINAL DRIVE

UNNUMBERED PARTS IN THE ILLUSTRATIONS ARE THE SAME AS CORRESPONDING PARTS SHOWN WITH NUMBERS



DO NOT ORDER PARTS BY REFERENCE NUMBERS

ALWAYS GIVE PART NUMBER AND DESCRIPTION

# ALWAYS GIVE MODEL AND SERIAL NUMBER

## TRANSMISSION AND FINAL DRIVE

Ref. No.	Adams Part No.	DESCRIPTION	No. Req'd.	Serial Number
1	422909	Bull pinion bearing cup	2	
2	422910	Bull pinion bearing cone	2	
3	424308	Hardened steel ball	1	
4	424614	Woodruff key	1	
5	426524	Rear transmission spline shaft bearing	1	
6	426525	Front bevel pinion shaft and front spline shaft bearing	2	
7	426526	Rear bevel pinion shaft bearing	1	
8	471832	Brake lining rivet	22	
9	471845	Brake adjusting rod washer	1	
10	471847	Gear shifter lever housing gasket	1	
11	474315	Gear shifter lever housing	1	7300 †
	471848	Gear shifter lever housing	1	1 7299
12	473690	Hex head cap screw	7	
13		Lock washer 3/8" special	7	
14		Pipe plug 3/8"	1	
15	474314	Gear shift lever	1	7300 †
	471849	Gear shift lever	1	1 7299
16		Cotter pin 1/4" x 2-1/2"	1	
17	471850	Gear shifter lever shaft with ball	1	
18	471872	Hex slotted nut	1	
19	471882	Transmission front plate dowel pin	1	
20	471883	Filler hole cap	1	
21	471885	Seal, oil	2	1215 †
	471885	Seal, oil	1	1 1214
22	471886	Retainer, oil seal	2	1215 †
	471886	Retainer, oil seal	1	1 1214
23	471937	Slotted nut	2	
24	471964	Bull pinion and shaft	1	
25	471965	Bull pinion and shaft assembly (Incl. Ref. Nos. 24, 27 thru 31, and 39)	1	
26	471966	Bull pinion shaft bearing cage L.H.	1	
27	471967	Drive bevel gear bolt	6	
28		Lock washer 9/16" medium	6	
29		Castellated nut 9/16" N.F.	6	
30		Cotter pin 1/8" x 1"	6	
31	471968	Brake drum	1	
	471969	Bull pinion shaft bearing cage shim (.0625" thick)	2	
32	471970	Bull pinion shaft bearing cage shim (.0313" thick)	2	
	471971	Bull pinion shaft bearing cage shim (.0156" thick)	2	
	471972	Bull pinion shaft bearing cage shim (.004" thick)	6	
	471973	Brake band assembly (Incl. Ref. Nos. 8, 53 and 54)	1	
36	471831	(replaced by 471973)		
	471987	(replaced by 471973)		
37		Light castellated nut 5/8" N.F.	1	
38		Cotter pin 1/8" x 1-1/4"	1	
39	471974	Drive bevel gear (48 teeth - spiral - 13-3/4" dia.)	1	
40	471975	Reverse shaft	1	
41	471976	Drilled head bolt	1	
42		Lock washer 3/8" special	1	
43		Hex nut 3/8" N.C.	1	
44		Cotter pin 3/32" x 3/4"	1	

(Continued)

# ALWAYS GIVE MODEL AND SERIAL NUMBER

## TRANSMISSION AND FINAL DRIVE

Ref. No.	Adams Part No.	DESCRIPTION	No. Req'd.	Serial Number
(Continued)				
45	471977	Reverse idler gear bushing	2	
46	471978	Reverse idler gear assembly (Incl. Ref. No. 45)	1	
47	471979	Bevel pinion shaft	1	
48		Cotter pin 3/16" x 2-1/4"	1	
49	471980	Bull pinion shaft bearing cage, R.H.	1	
50	471984	Main frame	1	
51		Pipe cap 1/2"	1	
52	720358	Drain plug	2	
53	471985	Brake lining	1	
54	471986	Inside brake lever	1	
	471987	Brake adjusting rod (Discontinued)		
55	471988	Differential lock hub assembly (Incl. Ref. Nos. 92 and 93)	1	1 2690
56	471991	Main frame gasket	1	
57	471997	Hole cover gasket	1	
58	471998	Hand hole cover	1	
59		Cap screw, hex head 3/8" x 5/8" N.C.	4	
60		Lock washer 3/8" medium	4	
61	472000	Transmission sliding gear (15 teeth)	1	
62	472001	Transmission spline shaft	1	
63		Cotter pin 3/16" x 2"	2	
64	472002	Transmission sliding gear (15 and 24 teeth)	1	
65	472007	Transmission front plate gasket	1	
	472008	Bevel pinion shaft bearing shim (.0625" thick)	2	
66	472009	Bevel pinion shaft bearing shim (.0313" thick)	2	
	472010	Bevel pinion shaft bearing shim (.0156" thick)	4	
	472011	Bevel pinion shaft bearing shim (.007" thick)	6	
70	472012	Bevel pinion shaft bearing cover	1	
71		Cap screw, hex head 3/8" x 1-1/2" N.C.	3	
72		Cap screw, hex head 3/8" x 2-1/4" N.C.	2	
73		Lock washer 3/8" special	5	
74	472013	Drilled head cap screw	4	
75		Soft wire (18" long - #16 ga)	1	
76	472014	Bevel pinion shaft bearing retainer	1	
77	472015	Bevel pinion shaft bearing cover gasket	1	
78	472016	Transmission front plate	1	
79		Cap screw, hex head 1/2" x 1-1/2" N.C.	8	
80		Lock washer 1/2" special	8	
81	472017	Transmission stationary gear (34 teeth)	1	
82	472019	Transmission stationary gear (42 teeth)	1	
83	472020	Reverse gear (35 teeth)	1	
84	472021	Transmission stationary gear (51 teeth)	1	
85	472022	Bevel pinion shaft snap ring	2	
86	472023	Dowel pin (Transmission front cover)	1	
	472024	Transmission top cover shim (.031" thick)	4	
87	472025	Transmission top cover shim (.015" thick)	2	
	472026	Transmission top cover shim (.004" thick)	12	
90	472027	Transmission top cover rear dowel	1	
91	472042	Transfer housing lower gasket	2	
92	472150	Differential lock pin	4	1 2690
(Continued)				

# ALWAYS GIVE MODEL AND SERIAL NUMBER

## TRANSMISSION AND FINAL DRIVE

Ref. No.	Adams Part No.	DESCRIPTION	No. Req'd.	Serial Number	
(Continued)					
93	472152	Pin for differential lock pin	4	1	2690
94	472295	Round key	3		
95	472306	Front shifter fork	1		
96	472308	Rear shifter fork	1		
97	472650	Poppet spring	1		
98	472651	Breather assembly (Incl. Ref. Nos. 99, 100, 101, 130 and 141)	1		
99		Cap screw, hex head 1/4" x 1" N.C.	1		
99A		Cap screw, hex head 1/4" x 1-1/2" N.C.	1		
100		Cap screw, hex head 1/4" x 1-3/4" N.C.	2		
101		Lock washer 1/4" heavy	4		
102	472652	Breather gasket	1		
103	472699	Transmission stationary gear (23 teeth)	1		
104	472700	Transmission sliding gear (32 and 43 teeth)	1		
105	{472726	Differential housing bolt	12	1401	2690
		Differential housing bolt	8	1	1400
106		Hex slotted nut 7/8" N.F. (1 used with each 472726 bolt)			
107		Cotter pin 1/8" x 1-1/2" (1 used with each 472726 bolt)			
108	472742	Transmission cover	1		
109		Cap screw, hex head 5/8" x 1-1/2" N.C.	13		
110		Cap screw, hex head 5/8" x 3" N.C.	2		
111		Lock washer 5/8" medium	15		
112	{472760	Shifter rod poppet spring	3	307	†
		Shifter rod poppet spring	3	1	306
113	{472761	Shifter rod support	1	307	†
		Shifter rod support	1	1	306
114		Cap screw, hex head 1/2" x 1-1/2" N.C.	3		
115		Lock washer 1/2" special	3		
116	{472762	Shifter rod poppet	3	307	†
		Shifter rod poppet	3	1	306
117	{472763	Right shifter rod	1	307	†
		Right shifter rod	1	1	306
117A		Hex slotted nut 1/2" N.F. (light thick)	1		
117B		Cotter pin 3/32" x 3/4"	1		
118	{472764	Left shifter rod	1	307	†
		Left shifter rod	1	1	306
118A		Hex slotted nut 1/2" N.F. (light thick)	1		
118B		Cotter pin 3/32" x 3/4"	1		
119	{472765	Center shifter rod	1	307	†
		Center shifter rod	1	1	306
119A		Hex slotted nut 1/2" N.F. (light thick)	1		
119B		Cotter pin 3/32" x 3/4"	1		
120	{472766	Center shifter fork	1		
		(replaced by 472766)	1		
121	472767	Neutral lock finger clamp bolt	2	307	†
121A		Lock washer 5/16"	1		
121B		Hex slotted nut 5/16" N.F. (light thick)	1		
122		Cotter pin 1/16" x 5/8"	2		
123	472768	Right neutral lock finger	1	307	†
124	472769	Left neutral lock finger	1	307	†
125	472771	Front neutral lock finger guide rod	1	307	†
(Continued)					

# ALWAYS GIVE MODEL AND SERIAL NUMBER

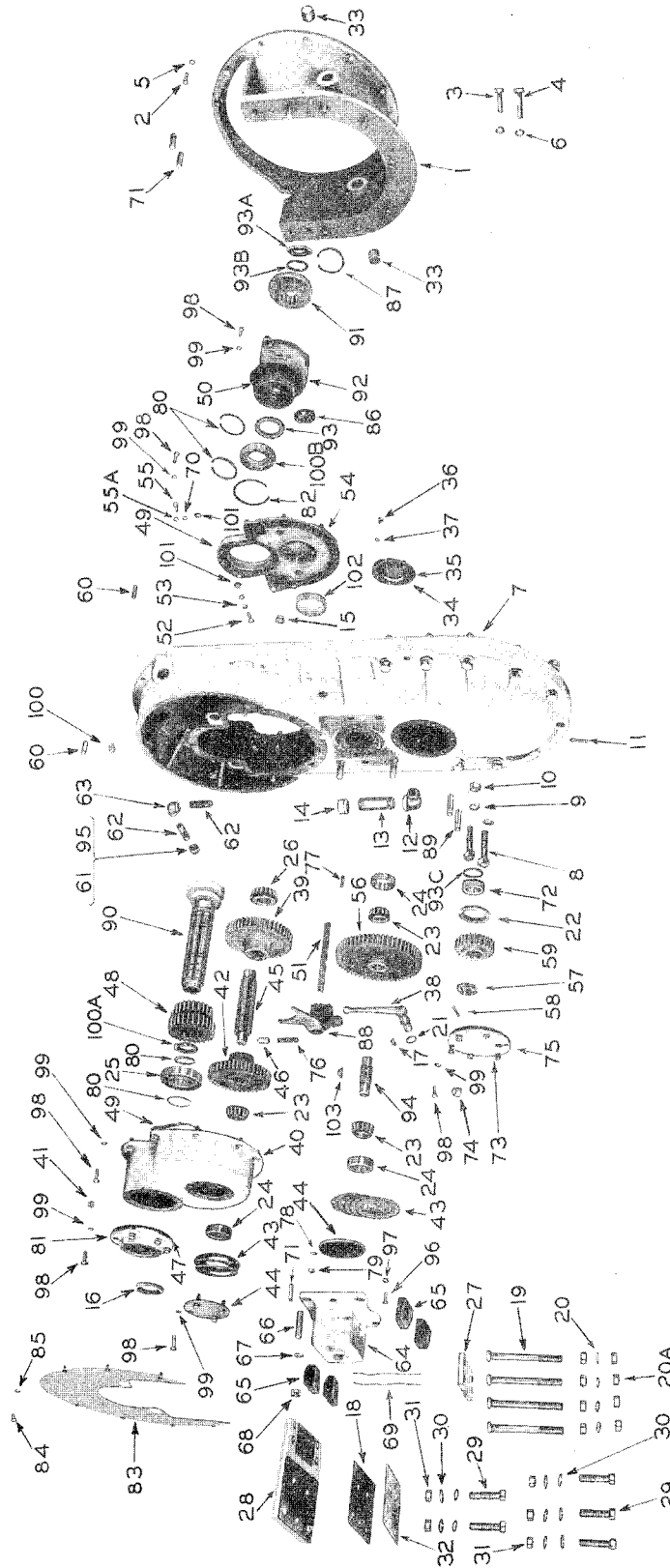
## TRANSMISSION AND FINAL DRIVE

Ref. No.	Adams Part No.	DESCRIPTION	No. Req'd.	Serial Number	
(Continued)					
126	472772	Rear neutral lock finger guide rod	1	307	†
127	472773	Right shifter rod head	1	307	†
128	472774	Center shifter rod head	1	307	†
129	472775	Left shifter rod head	1	307	†
130	472777	Breather pipe	1		
131	472788	Gear shifter assembly (Incl. Ref. Nos. 94 thru 96, 112 thru 129, and 137 and 138)	1	307	†
132	472796	Right differential housing	1	1	2690
	472725	(replaced by 472796)			
133	472797	Left differential housing	1	1	2690
	472723	(replaced by 472797)			
134	472918	Bull gear and spider	1	2691	†
	472803	Bull gear and spider	1	1	2690
	472724	(replaced by 472803)			
135	472919	Differential bearing	2	2691	†
	472069	Differential bearing	2	1	2690
136	472920	Differential bearing snap ring	2	2691	†
	472185	Differential bearing snap ring	2	1	2690
137	473050	Heat treated cap screw	3		
138		Shakeproof lock washer 3/8" internal teeth	3		
		Shakeproof lock washer 3/8" external teeth(replaced by internal teeth)			
139	473051	Heat treated cap screw	8		
140		Lock washer 5/8" medium	8		
141	473052	Bronze or copper sponge 3/8" oz.	1		
142	473054	Hardened steel ball	2	1	306
143	FP1146	Woodruff key	1		
144	474257	Magnetic pipe plug	1	6813	†
145	474258	Magnetic pipe plug	1	6813	†

# ALWAYS GIVE MODEL AND SERIAL NUMBER

## TRANSFER DRIVE

UNNUMBERED PARTS IN THE ILLUSTRATIONS ARE THE SAME AS CORRESPONDING PARTS SHOWN WITH NUMBERS



DO NOT ORDER PARTS BY REFERENCE NUMBERS

ALWAYS GIVE PART NUMBER AND DESCRIPTION

# ALWAYS GIVE MODEL AND SERIAL NUMBER

## TRANSFER DRIVE

Ref. No.	Adams Part No.	DESCRIPTION	No. Req'd.	Serial Number
1	402945	Adaptor housing (Incl. Ref. No. 33)	1	1530 7299
1	2107	Adaptor housing	1	1 1529
2		Cap screw, hex head 3/8" x 1-1/2" N.C.	12	
3		Cap screw, hex head 3/4" x 1-3/4" N.C.	2	
4		Cap screw 3/4" x 2"	6	
5		Lock washer 3/8" special	12	
6		Lock washer 3/4" medium	8	
7	403828	Transfer housing and front support assembly (Incl. Ref. Nos. 15, 64 and 71)	1	
7	472041	(replaced by 403828)		
8		Cap screw, hex head 3/4" x 3-1/4" N.C.	10	
9		Lock washer 3/4" medium	10	
10		Hex nut 3/4" N.C.	2	
11		Cotter pin 5/32" x 1-1/4"	1	
12		Street elbow 1" malleable	1	
13		Pipe nipple 1" x 5"	1	
14		Pipe cap 1"	1	
15		Pipe plug 3/8"	1	
16	423843	Input shaft front oil seal	1	
17	424614	Woodruff key	1	
18	425880	Front motor support shim	1	
19	425881	Power unit support bolt	4	
20		Lock washer 3/4" shakeproof internal teeth	4	
20A		Hex nut 3/4" N.C.	8	
21	426513	Shifter arm oil seal	1	
22	426515	Transmission spline shaft oil seal	1	
23	426516	Idler shaft bearing cone	3	
24	426517	Idler shaft bearing cup	3	
25	426523	Input shaft bearing (front)	1	
25	426520	(replaced by 426523)		
26	426521	Idler shaft bearing cone	1	
27	426698	Support clamp bar	1	
28	426699	Front motor support	11	
29		Machine bolt, hex head 3/4" x 3-1/4" N.C.	5	
30		Lock washer 3/4" medium	10	
31		Hex nut 3/4" N.C.	5	
32	428759	Front motor support shim	1	
33	429792	Bushing	2	1530 7299
34	471892	Lower idler inner cover gasket	1	
35	471893	Lower idler bearing inner cover	1	
36		Cap screw, hex head 5/16" x 3/4" N.C.	3	
37		Lock washer 5/16" medium	3	
38	471894	Shifter arm	1	
39	471895	Upper idler gear (45 teeth)	1	
40	471896	Transfer housing top cover	1	
41		Pipe plug 1"	1	
42	471897	Overdrive gear (40 teeth)	1	
43	471898	Bearing cap shim (.0313" thick)	4	
43	471899	Bearing cap shim (.0156" thick)	4	
43	471900	Bearing cap shim (.004" thick)	16	
44	471901	Transfer housing bearing cap	2	

(Continued)

# ALWAYS GIVE MODEL AND SERIAL NUMBER

## TRANSFER DRIVE

Ref. No.	Adams Part No.	DESCRIPTION	No. Req'd.	Serial Number
(Continued)				
45	471902	Upper idler gear shaft	1	
46	471903	Shifter rod poppet	1	
47	471908	Top cover bearing cage gasket	1	
48	474097	Transfer drive sliding gear	1	6381 †
48	471911	Transfer drive sliding gear	1	1 6380
49	471912	Transfer housing top gasket	2	
50	474295	Top plate bearing retainer gasket	1	7300 †
50	471915	Top plate bearing retainer gasket	1	1 7299
51	471928	Transfer drive shifter rod	1	
52		Set screw, square head cup point 3/8" x 1-1/4" N.C.	1	
53		Hex nut 3/8" N.C.	1	
54	474292	Transfer housing top plate	1	7300 †
54	471929	Transfer housing top plate	1	1 7299
55		Cap screw, hex head 3/8" x 1/2" N.C.	1	
55A		Lock washer 3/8"	1	
56	471933	Lower idler gear (55 teeth)	1	
57	471937	Slotted nut	1	
58		Cotter pin 3/16" x 2"	1	
59	471938	Transfer drive lower gear	1	
60	471941	Dowel pin	4	
61	471943	Breather cap	1	
62		Steel pipe nipple 1/2" x 2-1/2"	2	
63		Malleable elbow 1/2"	1	
64	471944	Power unit front support	1	
65	471945	Power unit front support block	4	
66	471946	Power unit front support stud	4	
67		Lock washer 5/8" medium	4	
68		Hex nut, slotted 5/8" N.F.	4	
69		Annealed wire (14" long - #16 ga.)	2	
70	471951	Copper washer	1	
71	472023	Dowel pin (between transfer housing and power unit front support)	2	7300 †
71	472023	Dowel pin (between transfer housing and power unit front support. Also transfer housing and adapter housing.)	4	1 7299
72	472028	Transmission spline shaft spacer	1	
73	472039	Transfer housing lower cover	1	
74		Pipe plug 1/2"	1	
75	472040	Transfer housing lower cover gasket	1	
76	474099	Shifter rod poppet spring	1	6381 †
76	472082	Shifter rod poppet spring	1	1 6380
77	472151	Stud	4	
78		Lock washer 3/8" medium	4	
79		Hex nut 3/8" N.F.	4	
80	472154	Snap ring	4	6381 †
80	472154	Snap ring	3	3009 6380
80	472154	Snap ring	2	1 3008
(Continued)				



# ALWAYS GIVE MODEL AND SERIAL NUMBER

## TRANSFER DRIVE

Ref. No.	Adams Part No.	DESCRIPTION	No. Req'd.	Serial Number	
(Continued)					
81	472158	Input shaft front bearing retainer assembly (Incl. Ref. No. 16)	1		
82	474290	Input shaft rear bearing snap ring	1	7300	†
82	472160	Input shaft rear bearing snap ring	1	1	7299
83	472161	Transfer housing clutch compartment cover	1		
84		Machine screw, round head 1/4" x 1/2" N.C.	9		
85		Lock washer 1/4" heavy	9		
86	472162	Input shaft coupling spacer	1	1	3008
87	472166	Input shaft coupling snap ring	1	1	3008
88	472182	Transfer drive shifter fork	1		
89	472316	Threaded dowel pin (between transfer housing and transmission case)	2		
90	474291	Transfer drive input shaft	1	7300	†
90	474096	Transfer drive input shaft	1	6381	7299
90	472820	Transfer drive input shaft	1	3009	6380
90	472155	Transfer drive input shaft	1	1	3008
91	472821	Input shaft coupling	1	3009	7299
91	472800	Input shaft coupling	1	1	3008
91	472157	(replaced by 472800)			
92	474294	Input shaft rear bearing cage assembly (Incl. Ref. No. 93)	1	7300	†
92	472823	Input shaft rear bearing cage assembly (Incl. Ref. No. 93)	1	3009	7299
92	472802	Input shaft rear bearing cage assembly (Incl. Ref. No. 93)	1	1	3008
92	472159	(replaced by 472802)			
93	474296	Oil seal (input shaft rear)	1	7300	†
93	426515	Oil seal (input shaft rear)	1	3009	7299
93	472156	Oil seal (input shaft rear)	1	1	3008
93	472824	(replaced by 426515)			
93A	472825	Input shaft coupling nut	1	3009	7299
93B	472826	Input shaft coupling lock washer	1	3009	7299
93C	472832	Transfer spline shaft spacer seal (Used on Serial Nos. 2343 thru 7299 also 2002 thru 2032, 2145, 2157, 2160, 2184 thru 2190, 2283, 2289 thru 2310 and 2316 thru 2328)	1		
94	472833	Lower idler gear shaft	1		
94	471932	(replaced by 472833)			
95	473052	Bronze or copper sponge (3/8" oz.)	1		
96	473689	Cap screw, hex head	4		
97		Lock washer 3/8" medium	4		
98	473690	Cap screw, hex head	37		
99		Lock washer 3/8" special	37		
100	473694	Welch plug	1	3555	†
100		Pipe plug 3/4"	1	1	3554
100A	474098	Spacer	1	6381	†
100B	474298	Input shaft bearing (rear)	1	7300	†
100B	426523	Input shaft bearing (rear)	1	1	7299
100B	426520	(replaced by 426523)			
101	721209	Expansion plug 7/8"	2		
102	3P328	Idler shaft bearing cup	1		
103	4P150	Woodruff key	1		