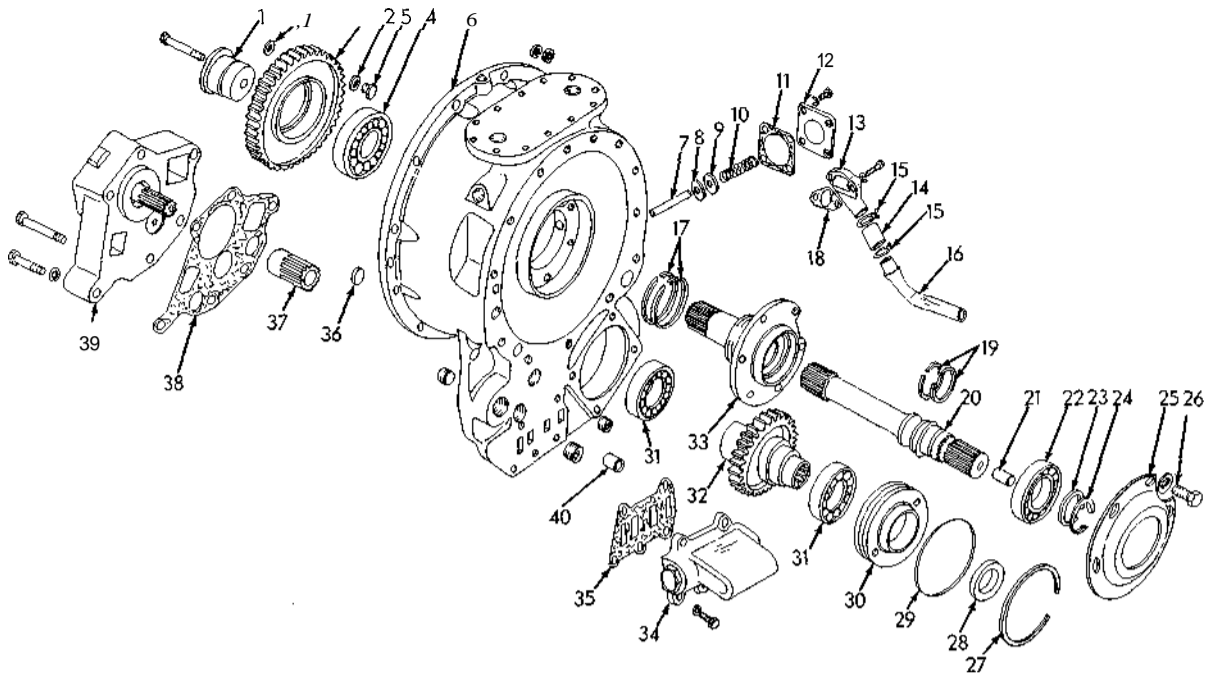


TRANSMISSION SUPPORTS*

T-36573

ITEM	PART NO.	QTY	DESCRIPTION
1	3043591	1	TRANSMISSION ASSEMBLY (See pages 76 thru 93) for parts)
	913828	12	CAPSCREW, 5/8" NC x 1-1/2"
	904209	12	LOCKWASHER, 5/8"
2	3024061	1	SUPPORT, transmission
	916021	2	CAPSCREW, 5/8" NF x 2"
	904209	2	LOCKWASHER, 5/8"
	911044	2	NUT, 5/8" NF
3	3020527	-	SHIM (.0598" thick. Use as required)
4	3023894	2	BRACKET, supporting
	916406	4	CAPSCREW, 5/8" NF x 1-3/4"
	904209	4	LOCKWASHER, 5/8"
	911044	4	NUT, 5/8" NF



CONVERTER HOUSING AND DRIVE GEARS

T-34429

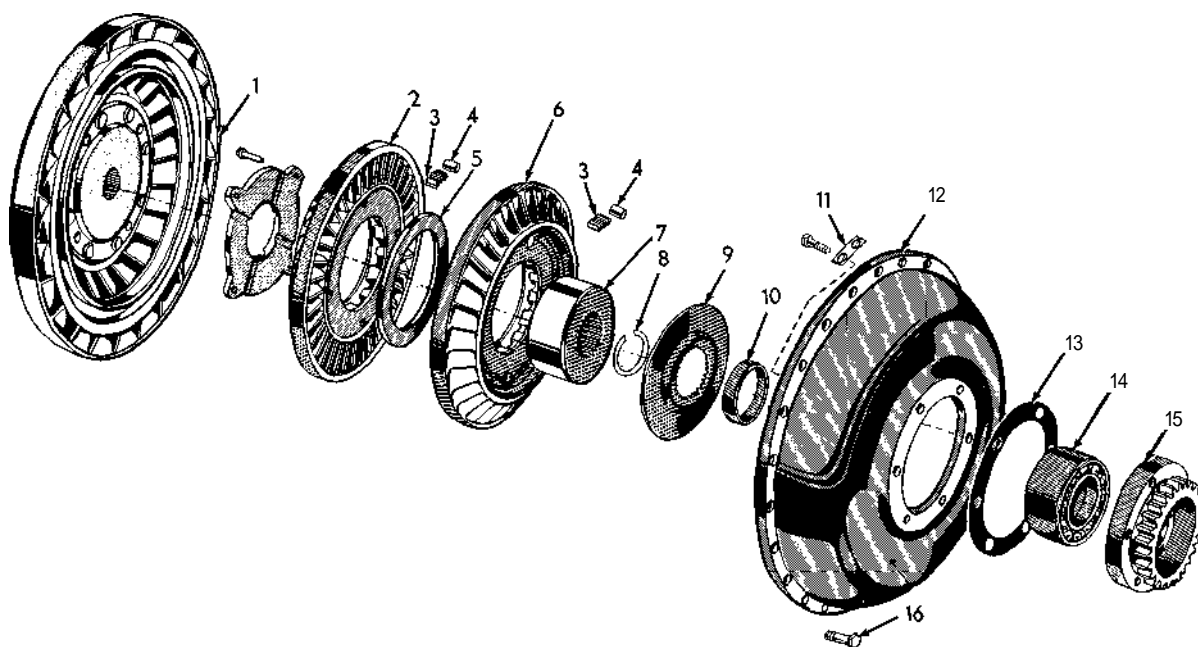
ITEM	PART NO.	QT	DESCRIPTION
1	3021179	1	SPINDLE, accessory drive gear
	3021224	1	CAPSCREW, 7/16" NC x 1-3/4"
2	3039322	-	WASHER
3	3039320	1	GEAR ASSEMBLY (Includes items 2, 4 and 5)
4	200130	1	BEARING, gear
5	3039321	-	RIVET
6	3025970	1	HOUSING, torque converter
7	3021081	1	PIN, guide
	3029949	1	D WASHER, regulating valve (First type)
	3039426	1	D WASHER, regulating valve (Second type)
9	3038871	1	VALVE, pressure regulating (Order also 1 WASHER 3039426)
10	3021068	1	SPRING, regulating valve
11	3021080	1	D GASKET, cover
12	3021160	1	COVER, pressure regulating valve
	915408	4	CAPSCREW, 3/8" NC x 3/4"
	904206	4	LOCKWASHER, 3/8"
			D (Also see PACKAGED PARTS)

(Continued)

CONVERTER HOUSING AND DRIVE GEARS (Continued)

ITEM	PART NO.	QTY.	DESCRIPTION
13	3021162	1	FLANGE, converter housing drain
	914847	1	CAPSCREW, 3/8" NC x 1-1/2"
	904206	2	LOCKWASHER, 3/8"
14	3021161	1	HOSE, flange to tube
15	3021034	2	CLAMP, hose
16	3021163	1	TUBE, converter housing drain
17	3021221	2	D RING, seal, hook type
18	3021206	1	D GASKET, converter drain
19	3020208	2	RING, hook type seal
20	3021139	1	SHAFT ASSEMBLY (Includes item 21)
21	3033705	1	PLUG, lube orifice
22	3021043	1	BEARING, ball
23	3021054	1	RING, snap
24	3021076	1	RING, snap
25	3021101	1	RETAINER, bearing
26	3021223	6	CAPSCREW, 3/8" NC x 7/8"
27	3021203	1	RING, external snap
28	3026156	1	SEAL
29	3021233	1	O-RING, seal
30	3021245	1	RETAINER, bearing
31	042847	2	BEARING, ball
32	3021244	1	GEAR, implement pump drive
33	3025634	1	SLEEVE, converter
34	—————	1	VALVE ASSEMBLY, pressure regulating (See page 80 for parts)
	915228	5	CAPSCREW, 3/8" NC x 1-1/4"
	904206	5	LOCKWASHER, 3/8"
35	3021111	1	GASKET, valve
36	3021158	1	PLUG, expansion
37	3021089	1	COUPLING, oil pump drive
38	3021088	1	GASKET, oil pump
39	3021105	1	PUMP ASSEMBLY, oil charging (See page 81 for parts)
	916274	2	CAPSCREW, 3/8" NC x 2-1/4"
	915990	4	CAPSCREW, 3/8" NC x 2-3/4"
	904206	6	LOCKWASHER, 3/8"
40	3025687		TUBE, oil director

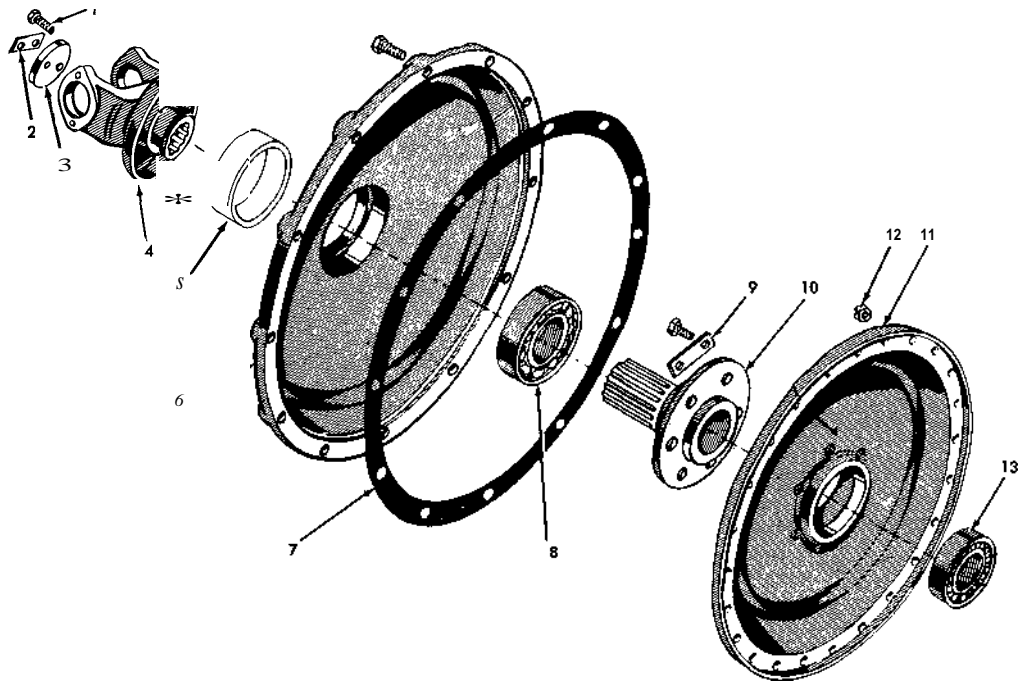
☐ (Also see PACKAGED PARTS)



TORQUE CONVERTER PUMP GROUP _____, T-36575

ITEM	PART NO.	QTY.	DESCRIPTION
1	3021152	1	TURBINE, torque converter
	3021167	1	STATOR ASSEMBLY, first (Includes 4 RIVET, 1 WASHER, and 1 STATOR) (Serviced only as a unit)
3	3031254	16	SPRING, freewheel roller
4	3021220	16	ROLLER, freewheel
5	3021077	1	WASHER, spacing
6	3021082	1	STATOR, second
7	3021085	1	RACE, freewheel
	3021087	1	RING, external snap
	3021084	1	SPACER, stator
10	3021086	1	SPACER, pump
11	3021122	3	STRIP, locking
	913249	6	CAPSCREW, 1/2" NF x 1-1/4"
12	3021116	1	PUMP ASSEMBLY, torque converter
13	3021210	1	D GASKET, pump
14	3043934	1	BEARING, ball
15	3021211	1	GEAR, input accessory drive
16	3033044	24	CAPSCREW, 5/16" NF x 1"

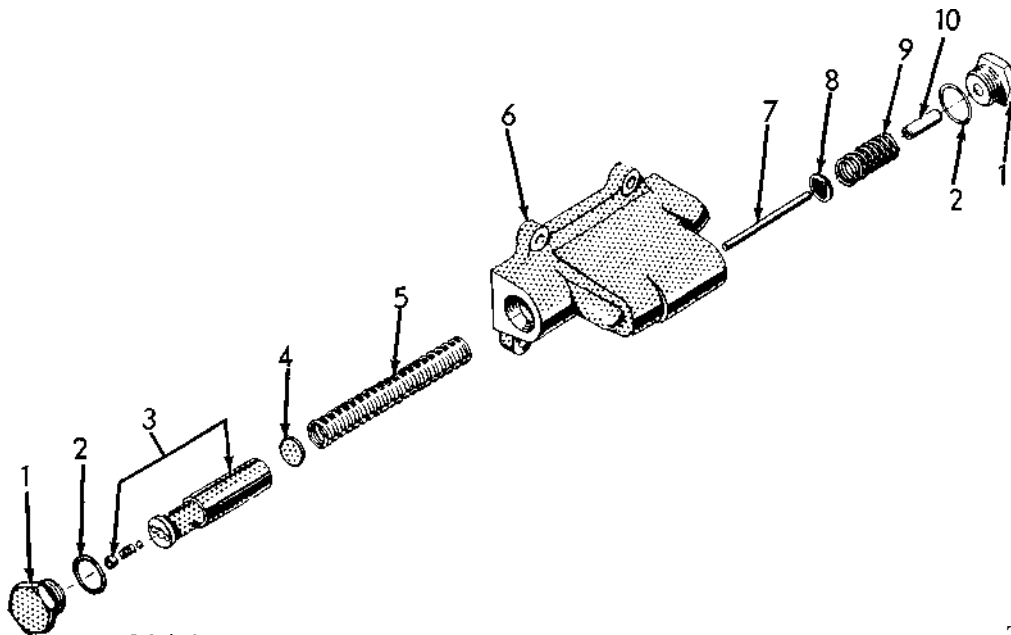
□ (Also see PACKAGED PARTS)



UE CONVERTER COVER AND DRIVE GROUP T-36574

ITEM	PART NO.	QTY.	DESCRIPTION
1	3033689	2	CAPSCREW, 3/8" NF x 1-1/8"
2	3021228	1	D STRIP, locking
3	3021226	1	WASHER, flange retaining
4	3021562	1	FLANGE ASSEMBLY (Includes shield) (Serviced only as a unit)
5	3021065	1	□ SEAL, flange
6	3021131	1	COVER, transmission front
	916385	12	CAPSCREW, 3/8" NF x 2"
	904206	12	LOCKWASHER, 3/8"
	911041	12	NUT, 3/8" NF
7	3021157	1	D GASKET, cover
8	067566	1	BEARING, single row, ball
9	3021122	3	D STRIP, locking
	918683	6	CAPSCREW, 1/2" NC x 1-1/8"
10	3021132	1	SHAFT, converter drive
11	3021166	1	COVER, converter pump
12	3021041	24	NUT, 5/16" NF
13	3007501	1	BEARING, cover

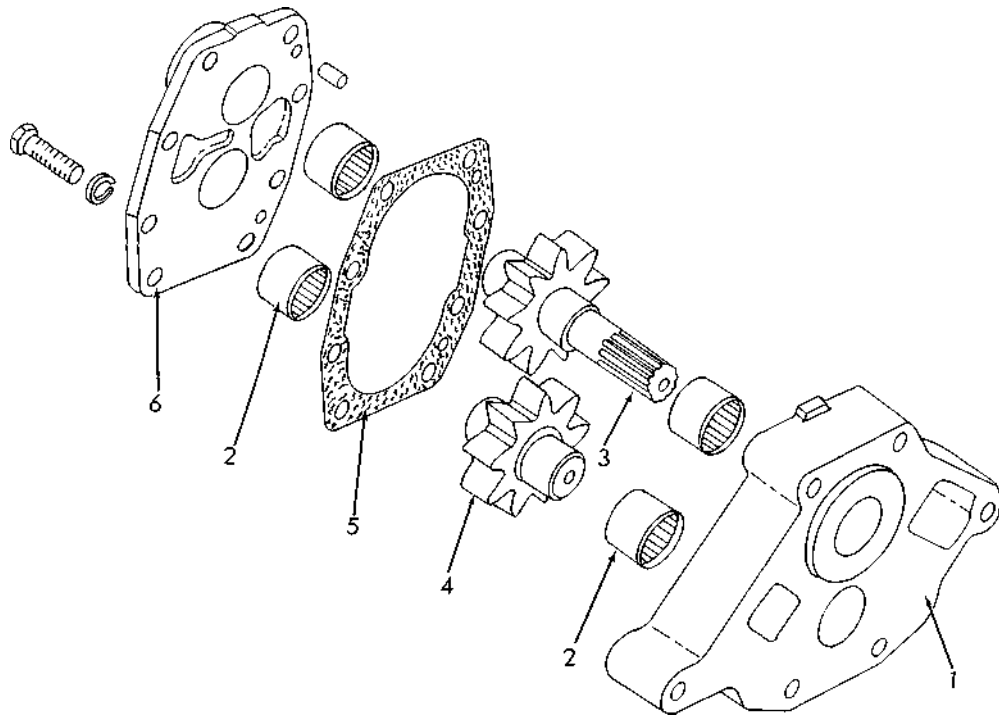
□(Also see PACKAGED PARTS)



.MAIN PRESSURE REGULATING VALVE PARTS T-34433

USAGE: * 3021204 - Valve Assembly - Used prior to transmission serial #21619
 ** 3034590- Valve Assembly - Effective with transmission serial #21619

ITEM	PART NO.	QTY.	DESCRIPTION
		* **	NOTE: See page 77 for listing of complete Assembly.
1	3021093		PLUG, body
2	3021011	2	d GASKET, plug
	3028858		VALVE ASSEMBLY, pressure regulating (Includes retainer, spring ball and valve) (Serviced as a unit)
	3034593	1	VALVE ASSEMBLY, pressure regulating (Includes retainer, spring ball and valve) (Serviced as a unit)
4	3027991	-	SHIM, pressure regulating (.0428" thick. Use as required)
5	3033767	1	1 SPRING, pressure regulator
6	3021177	1	BODY, pressure regulator valve
	3034592	1	BODY, pressure regulator valve
7	3034602	1	PIN, valve guide
8	3034601	1	VALVE, pressure relief
9	3034600	1	SPRING, pressure relief valve
10	3034599	1	TUBE, spring guide
			D (Also see PACKAGED PARTS)

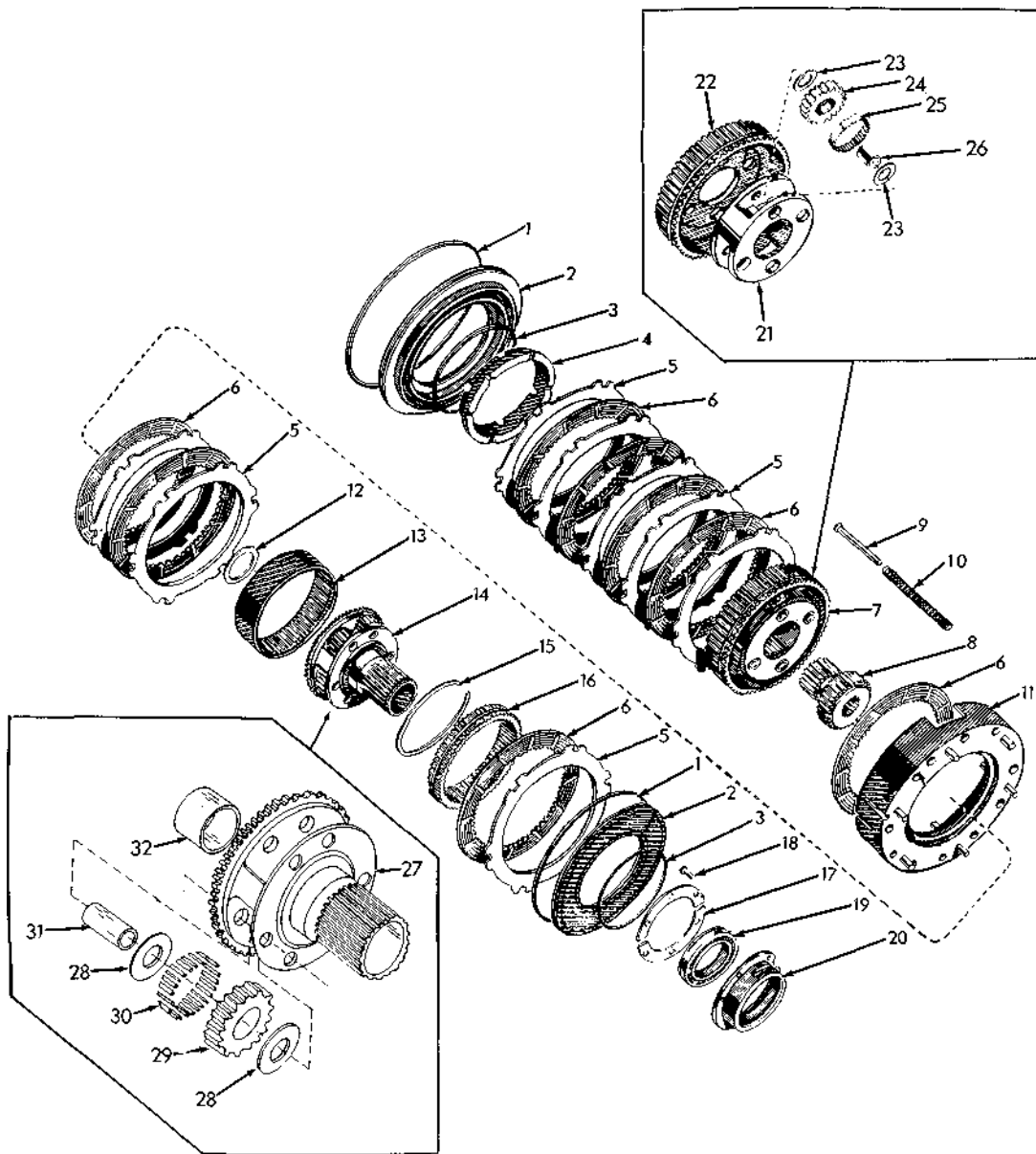


—————CHARGING OIL PUMP 3021105—————

T-34430

ITEM	PART NO.	QTY.	DESCRIPTION
			NOTE: See page 77 for listing of complete Assembly.
1	3021142	1	BODY ASSEMBLY, oil pump (Includes item 2)
2	051513	4	BEARING, needle
3	3021103	1	GEAR, drive
4	3021102	1	GEAR, driven
5	3021144	1	D GASKET, pump cover
6	3021098	1	COVER ASSEMBLY, oil pump (Includes item 2)
	916271	4	CAPSCREW, 3/8" NC x 1"
	904206	4	LOCKWASHER, 3/8"

☐ (Also see PACKAGED PARTS)



•FORWARD AND REVERSE PLANETARIES AND CLUTCHES

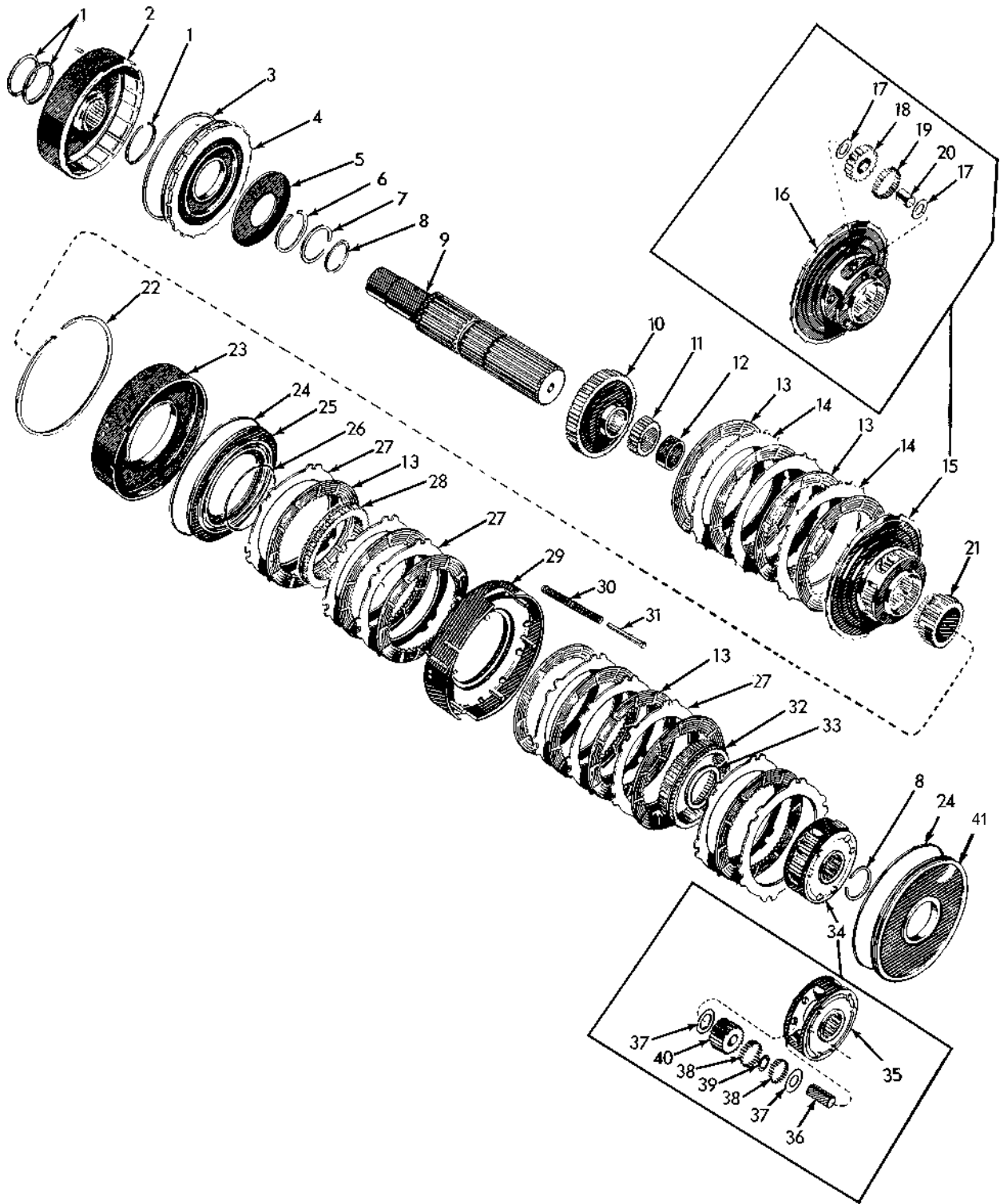
T-34432

ITEM	PART NO.	QTY.	DESCRIPTION
1	3042146	2	□ SEAL KIT, external (Includes expander)
2	3045280	2	PISTON, clutch apply
3	3042138	2	D SEAL KIT, internal (Includes expander)
4	3021216	1	SPACER
5	3021191	8	PLATE, internal splined, forward and reverse clutch
6	3021215	8	PLATE, internal splined, forward and reverse clutch

(Continued)

FORWARD AND REVERSE PLANETARIES AND CLUTCHES (Continued)

ITEM	PART NO.	QTY.	DESCRIPTION
7	3021218	1	CARRIER ASSEMBLY, reverse planetary (Includes items 21 thru 26)
8	3021096	1	GEAR, forward and reverse sun
9	3021036	12	PIN, spring guide
10	3032981	12	SPRING, piston return
11	3021242	1	ANCHOR, reverse clutch
12	3021123	1	WASHER, thrust
13	3021104	1	GEAR, reverse ring
14	3042823	1	CARRIER ASSEMBLY, forward planetary (Includes items 27 thru 32)
15	3021079	1	RING, internal snap
16	3046941	1	GEAR, forward ring
17	3021100	2	RETAINER, bearing (half)
18	3021223	6	CAPSCREW, slotted, 3/8" NC x 7/8"
19	3021049	1	BEARING
20	3021095	1	HUB, oil transfer
21	—————	1	CARRIER, reverse planetary (Not serviced, order 3021218)
22	3021217	1	HUB, reverse planetary
23	3041695	8	WASHER, pin thrust
24	3041696	1	PINION SET (Consists of four (4) pinions)
25	3021051	88	ROLLER, planetary pin
26	3021097	4	PIN, planetary spindle
27	—————	1	CARRIER, forward planetary (Not serviced, order 3042823)
28	3021073	12	WASHER, pin thrust
29	3021250	1	PINION SET (Consists of six (6) pinions)
30	3021074	120	ROLLER, planetary pin
31	3021072	6	PIN, planetary spindle
32	3021119	1	BUSHING, carrier assembly D (Also see PACKAGED PARTS)



T-34431

INTERMEDIATE, HIGH AND LOW RANGE PLANETARIES AND CLUTCHES.

INTERMEDIATE, HIGH, AND LOW RANGE PLANETARIES AND CLUTCHES

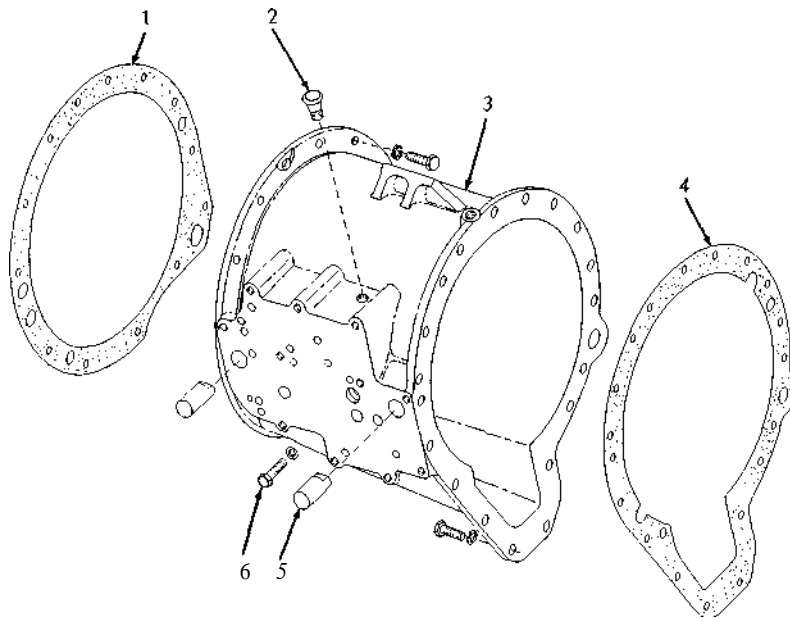
ITEM	PART NO.	QTY.	DESCRIPTION
1	3021121	3	□ RING, hook-type seal
2	3044118	1	DRUM ASSEMBLY, intermediate range clutch (Includes pin) (Serviced only as a unit)
3	3021155	1	D O-RING, sealing
4	3021212	1	PISTON ASSEMBLY, intermediate range (Includes ball) (Serviced only as a unit)
5	3021186	1	SPRING, piston return
6	3021057	1	RING, snap, spring retaining
7	3021055	1	RING, snap, drum retaining
8	3021069	2	RING, external snap
9	3036962	1	SHAFT, transmission (Prior to transmission serial #24029, also order 1 RING, 3021069 and remove spacer 3021181)
10	3021182	1	HUB, intermediate range clutch
11	3021071	1	GEAR, high range sun
12	3021181	1	SPACER, carrier
13	3021215	12	PLATE, internal splined, intermediate, high and low clutch
14	3021193	3	PLATE, intermediate clutch
15	3021198	1	CARRIER ASSEMBLY, high range (Includes items 16 thru 20)
16	—————	1	CARRIER, high range (Not serviced, order 3021198)
17	3021073	12	WASHER, pin thrust
18	3021250	1	PINION SET (Consists of six pinions)
19	3021074	120	ROLLER, planetary pin
20	3021072	6	PIN, planetary
21	3021175	1	GEAR, low range sun
22	3021124	1	RING, internal snap
23	3021178	1	HOUSING, high range piston
24	3042146	2	□ SEAL KIT, external (Includes expander)
25	3046507	1	PISTON, high range clutch
26	3042138	1	□ SEAL KIT, internal (Includes expander)
27	3021191	8	PLATE, high and low clutch

(Continued)

INTERMEDIATE, HIGH. AND LOW RANGE PLANETARIES AND CLUTCHES
(Continued)

ITEM	PART NO.	QTY.	DESCRIPTION
28	3046941	1	GEAR, high range clutch ring
29	3021242	1	ANCHOR, high and low range
30	3032981	12	SPRING, piston return
31	3021036	12	PIN, spring guide
32	3021195	1	GEAR, low range ring
33	3021188	1	WASHER, thrust
34	3042822	1	CARRIER ASSEMBLY, low range planetary (Includes items 35 thru 40)
35		1	CARRIER, planetary (Not serviced, order 3042822)
36	3021099	6	PIN, planetary
37	3021073	12	WASHER, thrust
38	3021118	240	ROLLER, planetary pin
39	3021141	6	SPACER
40	3021000	1	PINION SET (Consists of six pinions)
41	3021183	1	PISTON, low range clutch

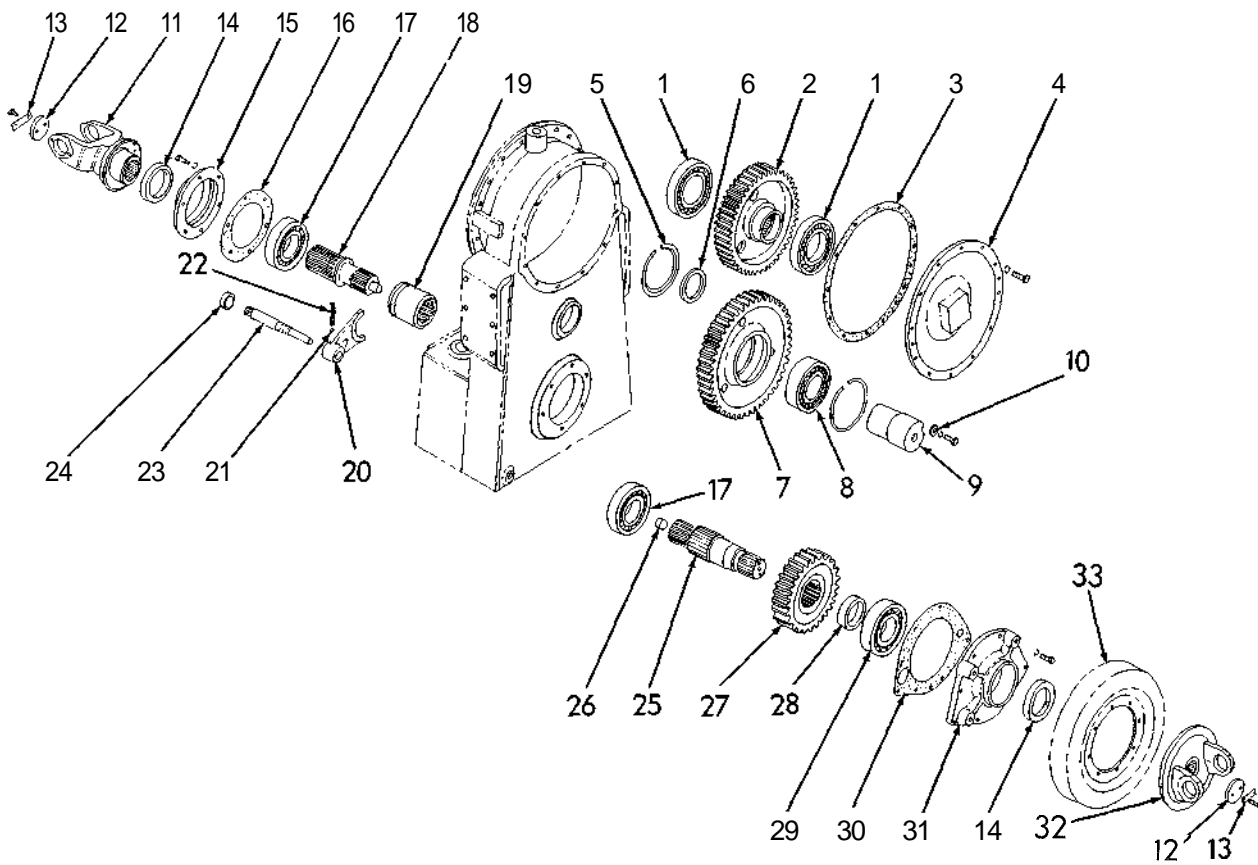
D (Also see PACKAGED PARTS)



•PLANETARY AND CLUTCH HOUSING

T-29429

ITEM	PART NO.	QTY.	DESCRIPTION
1	3021108	1	D GASKET, converter housing
2	3021062	1	BREATHER, transmission
3	3021194	1	HOUSING, transmission
	920649	31	CAPSCREW, 7/16" NC x 1-3/8"
	904207	31	LOCKWASHER, 7/16"
4	3021115	1	D GASKET, transmission housing
5	3021241	2	PIN, clutch anchor
6	3033682	1	CAPSCREW, 3/8" NC x 1-1/2"
	904206	1	LOCKWASHER, 3/8"
			D (Also see PACKAGED PARTS)



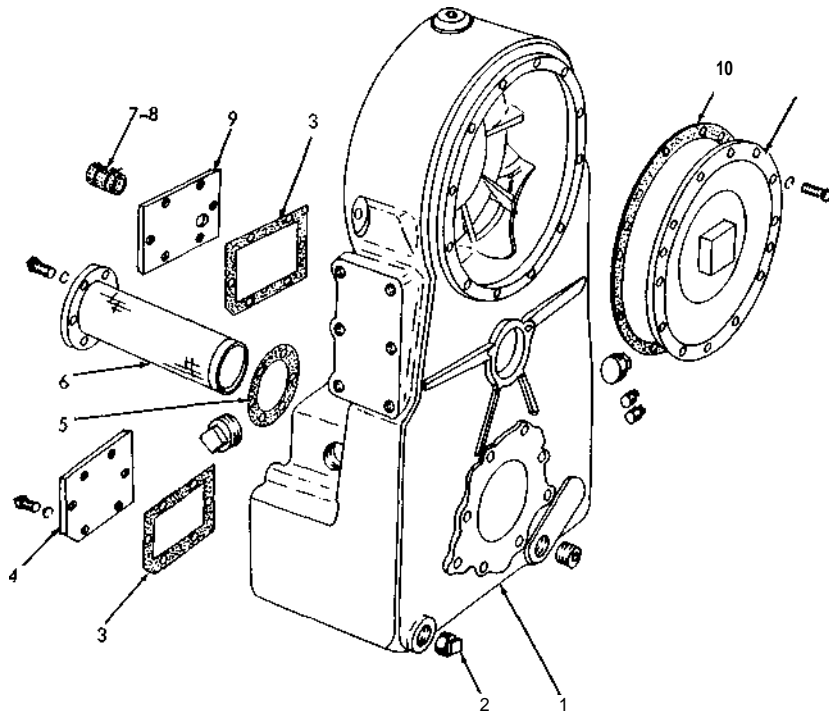
TRANSFER GEARS, COVER AND OUTPUT SHAFT. T-29452

ITEM	PART NO.	QTY.	DESCRIPTION
1	042975	2	BEARING, ball
	3021121	1	D RING, snap, bearing retaining (Not Illustrated)
2	3021172	1	GEAR, transfer drive
3	3021114	1	□ GASKET, transfer drive gear cover
4	3021113	1	COVER, transfer drive gear
	915228	12	CAPSCREW, 3/8" x 1-1/4"
	904206	12	LOCKWASHER, 3/8"
5	3021060	2	RING, snap, idler gear bearing retaining
6	3021200	1	SPACER, idler gear bearing
7	3021156	1	GEAR, idler (See Master Numerical Index)
8	3021219	1	BEARING, ball, idler gear

(Continued)

TRANSFER GEARS, COVER AND OUTPUT SHAFT (Continued)

ITEM	PART NO.	QTY	DESCRIPTION
9	3021201	1	SPINDLE, idler gear
	920600	1	CAPSCREW, 7/16" x 1"
	904207	1	LOCKWASHER, 7/16"
10	3021197	1	WASHER, plain
11	3021562	1	FLANGE ASSEMBLY, rear output (Includes dust shield)
12	3021226	2	WASHER, flange retainer
	920619	4	CAPSCREW, 3/8" NF x 1-1/8"
13	3021228	2	STRIP, locking
14	3021065	2	D SEAL, oil, flange
15	3021159	1	RETAINER, bearing, rear output
	916271	6	CAPSCREW, 3/8" NF x 1"
	904206	6	LOCKWASHER, 3/8"
16	3021117	1	D GASKET, bearing retaining
17	3012089	2	BEARING, ball, front and rear output shaft
18	3021126	1	SHAFT, rear output
19	3021127	1	COUPLING, shaft, rear output
20	3021128	1	FORK, shifter, transmission
21	915905	2	BALL, detent
22	3021129	1	SPRING, detent
23	3021120	1	SHAFT, shifter fork
24	3021053	1	D SEAL, shaft
25	3021202	1	SHAFT ASSEMBLY, front output (Includes item 26)
26	3021094	1	BUSHING, shaft
27	3021173	1	GEAR, driven
28	3021209	1	SPACER, driven gear
29	3021048	1	BEARING, ball, front shaft
30	3021125	1	D GASKET, front bearing retainer
31	3021180	1	RETAINER, front bearing
	919225	6	CAPSCREW, 3/8" NC x 1-3/8"
	904206	6	LOCKWASHER, 3/8"
32	3024248	1	FLANGE, front output
33	3021728	1	BRAKE ASSEMBLY, parking (See page 91 for parts) D (Also see PACKAGED PARTS)



•TRANSFER HOUSING AND FILTER _____

T-34426

ITEM	PART NO.	QTY.	DESCRIPTION
1	3036324	1	HOUSING, transfer gear
2	3021038	1	PLUG, pipe, oil sump drain
	901666	1	PLUG, pipe, cts'k., 1" NPTF
	920130	1	PLUG, pipe (oil level) 1/4" NPTF
	921500	2	PLUG, pipe (oilfiller) sq-hd. , 1-1/4" NPT
3	3021146	2	D GASKET, cover
4	3021147	1	COVER, inspection
	916271	6	CAPSCREW, 3/8" NC x 1"
	904206	6	LOCKWASHER, 3/8"
5	3021056	1	D GASKET, oil strainer
6	3021150	1	STRAINER, oil
	916269	6	CAPSCREW, 3/8" NC x 7/8"
	904206	6	LOCKWASHER, 3/8"
7	3021148	1	HOSE, converter housing drain
8	3021033	2	CLAMP, hose, adjustable
9	3021941	1	COVER, inspection drain
	916271	6	CAPSCREW, 3/8" NC x 1"
	904206	6	LOCKWASHER, 3/8"
10	_____	1	GASKET (See TRANSFER GEARS, COVER AND OUTPUT SHAFT)
11	_____	1	COVER (See TRANSFER GEARS, COVER AND OUTPUT SHAFT)

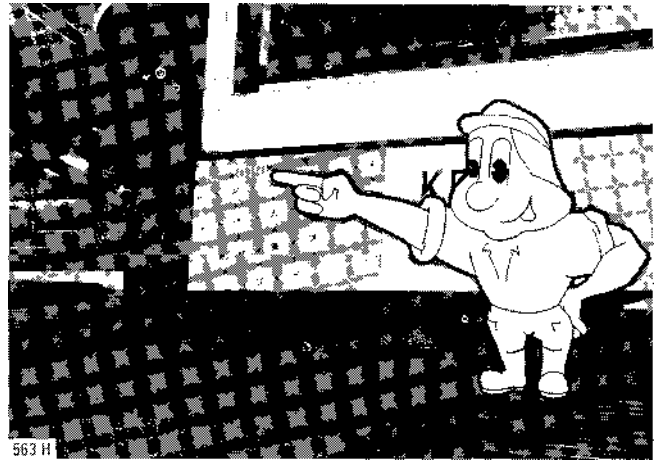
D (Also see PACKAGED PARTS)



IDENTIFICATION

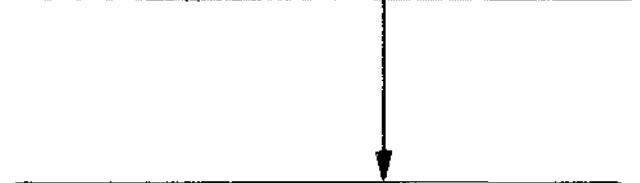
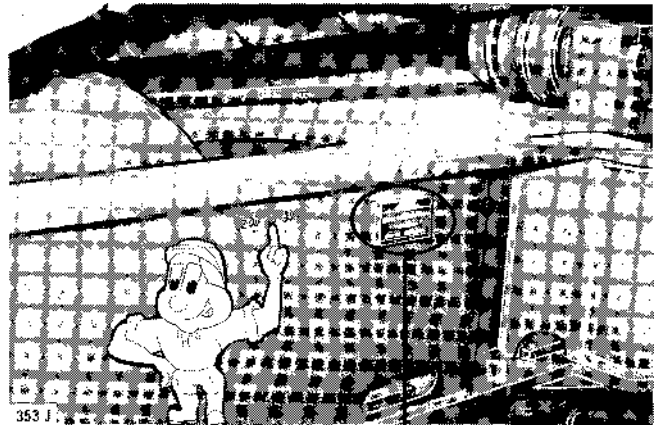
Your excavator is assigned a serial number which is stamped in three places.

1 . On the upperstructure, at front of cab base.



2 : On the manufacturer's plate, located on the inside face of the side member at the front of the carrier frame, on the right-hand side.

3 : On the carrier frame, close to the manufacturer's plate.



Poclair

SO LE PLESSIS BELLEVILLE

Number to be quoted in all correspondence
E.g. : 220CK 220 05.11 - 845

	NUMERO	DE	SERIE	
220 CK	220 05		845	
	AN NEE	PUISSANCE	MOTEUR	SAE
	1976	280		
NIVEAU SONORE		POIDS (PTAC)		
		45000		Kg
MADE IN FRANCE				

Some components (engine, hydraulic pump, valve banks, hydraulic motors) bear a manufacturer's plate. Please quote the particulars given on the plate, including the number of your machine, when servicing one of the above components

CHARACTERISTICS

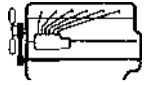
60

75

90

115

160



DEUTZ
F 4 L 912

DEUTZ
F5 L 912

DEUTZ
F 6 L 912

DEUTZ
BF 6 L 913

DEUTZ
BF 6 L 913



63 ch CV PS
62.1 HP
46,4kW

79 ch CV PS
77.9 HP
58,1 kW

95 ch CV PS
93.7 HP
69,9kW

130 ch CV PS
128.2 HP
95,7 kW

152 ch CV PS
149.9 HP
111,9kW



70 ch CV PS
69 HP
51,5kW

88 ch CV PS
86.8HP
64,8 kW

105 ch CV PS
103.5HP
77,3 kW

150 ch CV PS
147.9 HP
110,4 kW

158 ch CV PS
155.8 HP
116,3 kW



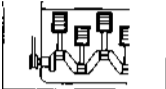
2150 t/mn
rpm
U/mn

2150 t/mn
rpm

2150 t/mn
rpm
U/mn

2150 t/mn
rpm
U/mn

2300 t/mn
rpm
U/mn



Air
Aire
Luft

Air
Aire
Luft

Air
Aire
Luft

Air
Aire
Luft

Air
Aire
Luft

24 Volts
Voltios
Volt

24 Volts
Voltios
Volt

24 Volts
Voltios
Volt

24 Volts
Voltios
Volt

24 Volts
Voltios
Volt



9 L
2 UK Gals
2.4 US Gals

12L
2.6 UK Gals
3.2 US Gals

17 L
3.7 UK Gals
4.5 US Gals

17 L
3.7 UK Gals
4.5 US Gals

17 L
3.7 UK Gals
4.5 US Gals



114 L
25.1 UK Gals
30.1 US Gals

200 L
44 UK Gals
52.8 US Gals

230 L
50.6 UK Gals
60.7 US Gals

305 L
67.1 UK Gals
80.5 US Gals

410 L
90.2 UK Gals
108.2 US Gals



10,4L
2.3 UK Gals
2.7 US Gals

13 L
2.9 UK Gals
3.4 US Gals

15,6 L
3.4 UK Gals
4.1 US Gals

21,3 L
4.7 UK Gals
5.6 US Gals

25,4 L
5.6 UK Gals
6.7 US Gals



100 L
22 UK Gals
26.4 US Gals

120 L
26.4 UK Gals
31.7 US Gals

165 L
36.3 UK Gals
43.5 US Gals

220 L
48.4 UK Gals
58.1 US Gals

300 L
66 UK Gals
79.2 US Gals



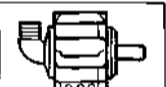
145 L
31.9 UK Gals
38.3 US Gals

180 L
39.6 UK Gals
47.5 US Gals

250 L
55 UK Gals
66 US Gals

320 L
70.4 UK Gals
84.5 US Gals

400 L
88 UK Gals
105.6 US Gals



H.POC 3 x 12,5
3 x 3P SIH C

H.POC 4 x 17.5
4 x 3P SIH C

H.POC 4 x 22
4 x 3P SIH C

H.POC 4 x 28,5
4 x 3P SIH C

H.POC 6 x 20
6 x 3 P SH C



2150 t/mn
rpm
U/mn

2150 t/mn
rpm
U/mn

2150 t/mn
rpm
U/mn

2150 t/mn
rpm
U/mn

2300 t/mn
rpm
U/mn

3 x 27 L/mn
3 x 5.9 UK gpm
3 x 7.1 US gpm

4 x 38 L/mn
4 x 8.4 UK gpm
4 x 10 US gpm

4 x 47 L/mn
4 x 10.3 UK gpm
4 x 12.4 US gpm

4 x 61 L/mn
4 x 13.4 UK gpm
4 x 16.1 US gpm

6 x 46 L/mn
6 x 10.1 UK gpm
6 x 12.1 US gpm

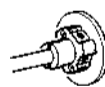
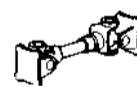
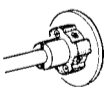
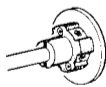
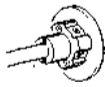
320 bar - bares - atü
4650 PSI
400 bar - bares - atu
5800 PSI

320 bar - bares - atii
4650 PSI
400 bar - bares - atii
5800 PSI

320 bar - bares - atii
4650 PSI
400 bar - bares - atii
5800 PSI

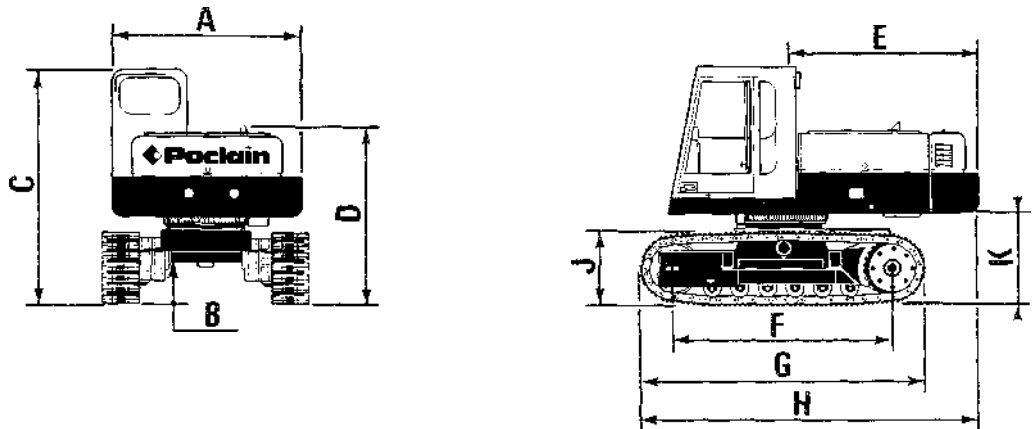
320 bar - bares - atii
4650 PSI
400 bar - bares -
5800 PSI

320 bar - bares - atii
4650 PSI
400 bar - bares - atii
5800 PSI





DIMENSIONS



	A	B	C	D	E	F	G	H	J	K
60 CL	2,42 m 7'11"	0,40 m 1'4"	2,96 m 9'9"	2,23 m 7'4"	2,01 m 6'7"	2,52 m 8'3"	3,31 m 10'10"	3,65 m 12'	0,85 m 2'10"	1,03 m 3'5"
75 CL	2,49 m 8'2"	0,49 m 1'7"	2,96 m 9'9"	2,23 m 7'4"	2,26 m 7'5"	2,86 m 9'5"	3,65 m 12'	4,08 m 13'5"	0,84 m 2'9"	1,03 m 3'5"
90 CL	2,49 m 8'2"	0,49 m 1'7"	3,06 m 10'1"	2,32 m 7'7"	2,60 m 8'6"	2,91 m 9'7"	3,82 m 12'6"	4,51 m 14'10"	0,93 m 3'1"	1,13 m 3'9"
90 CK	2,49 m 8'2"	0,45 m 1'6"	3,17 m 10'5"	2,43 m 8'	2,60 m 8'6"	3,01 m 9'11"	3,92 m 12'10"	4,56 m 14'11"	1,03 m 3'5"	1,24 m 4'1"
115 CL	2,73 m 9'	0,45 m 1'6"	3,20 m 10'6"	2,72 m 8'11"	2,89 m 9'6"	3,18 m 10'5"	4,10 m 13'5"	4,93 m 16'2"	1,03 m 3'5"	1,27 m 4'2"
160 CK	2,79 m 9'2"	0,50 m 1'8"	3,25 m 10'8"	2,80 m 8'2"	3,16 m 10'4"	3,33 m 10'11"	4,31 m 14'2"	5,31 m 17'5"	1,12 m 3'8"	1,32 m 4'4"

	20"	24"	28"	▲ 28"	34"	44"
60 cl	11,1 t 24,420 lbs		11,5 t 25,300 lbs	11,5 t 25,300 lbs	11,8 t 25,960 lbs	
75 cl	14,2 t 31,240 lbs	14,4 t 31,680 lbs	14,7 t 32,340 lbs	14,7 t 32,340 lbs	15 t 33,000 lbs	14,8 t 32,560 lbs
90 cl	17,5 t 38,500 lbs	17,8 t 39,160 lbs	18,1 t 39,820 lbs	18,1 t 39,820 lbs	18,4 t 40,480 lbs	18,2 t 40,040 lbs
90 ck	19 t * 41,800 lbs	19,3 t * 42,460 lbs	19,6 t * 43,120 lbs			
115 cl	22,6 t 49,720 lbs	22,9 t 50,380 lbs	23,2 t 51,040 lbs		23,6 t 51,920 lbs	
160 ck	29,4 t * 64,680 lbs		29,2 t 64,240 lbs			

	20"	24"	28"	▲ 28"	34"	44"
	2,49 m 8'2"		2,69 m 8'10"	2,49 m 8'2"	2,84 m 9'4"	
	2,75 m 9'	2,85 m 9'4"	2,95 m 9'8"	2,75 m 9'	3,10 m 10'2"	3,34 m 11'
	2,75 m 9'	2,85 m 9'4"	2,95 m 9'8"	2,75 m 9'	3,10 m 10'2"	3,34 m 11'
	2,75 m 9'	2,85 m 9'4"	2,95 m 9'8"			
	2,91 m 9'7"	3,01 m 9'11"	3,11 m 10'3"		3,26 m 10'8"	
	3,11 m 10'3"		3,31 m 10'10"			

60 CL
4,10 m - 2 m - 450 L
13'5" - 6'7" - 5/8 cu.yd

75 CL
4,40 m - 2,10 m - S20 L
14'5" - 6'11" - 3/4 cu.yd

4,80 m - 2,30 m - 765 L
15'9" - 7'7" - 1 cu.yd

3 m - 2,20 m - 950 L
9'10" - 7'3" - 1 1/4 cu.yd

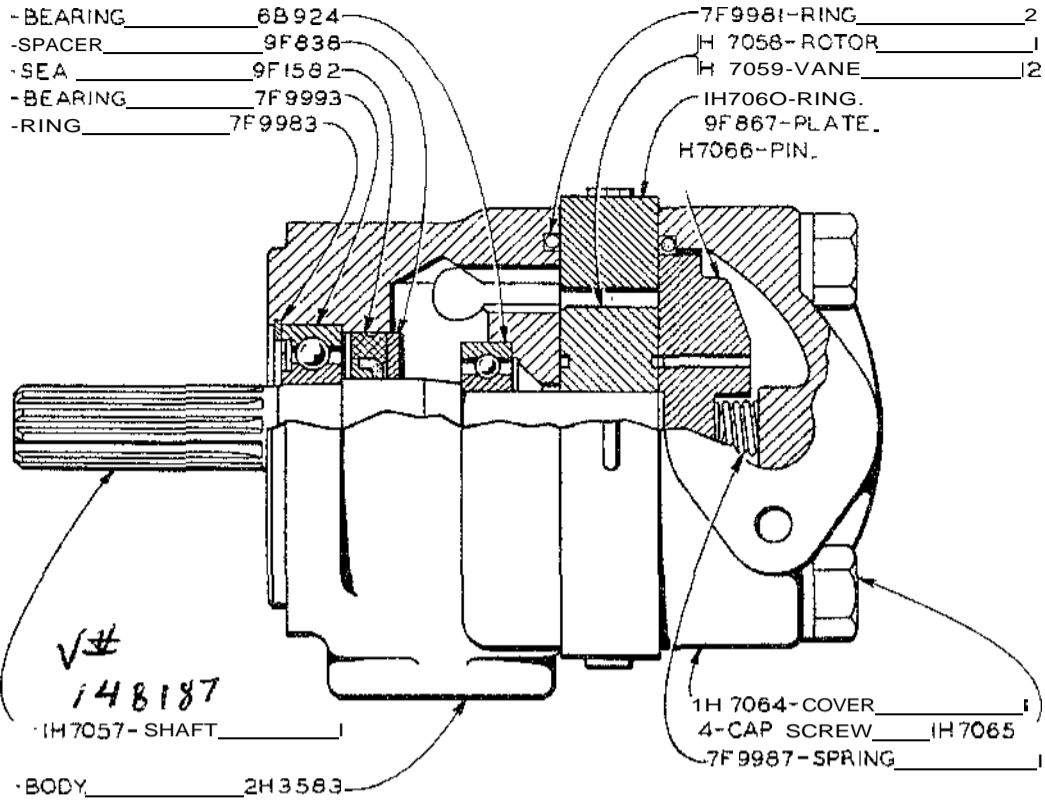
5,15 m - 2,50 m - 950 L
16'11" - 8'2" - 1 1/4 cu.yd

160 CK
5,70 m - 2,75 m - 1250 L
18'8" - 9' - 1 5/8 cu.yd

160 CK
3 m - 3,20 m - 1500 L
9'10" - 10'6" - 2 cu.yd

	60 cl	75 cl	90 cl	90 ck
	51 % en continu 51 % en continuo 51 % beständig 51 % steady climb	36 % an continu 36 % en continuo 36 % steady climb	53 % en continu 53 % en continuo 53 % steady climb	53 % en continu 31 % an continu 53 % steady climb 31 % steady climb
	7300 daN 16,060 lbs	10200 daN 22,850 lbs	11800 daN	12000 ti-ft 26,880 lbs
	0 → 1			

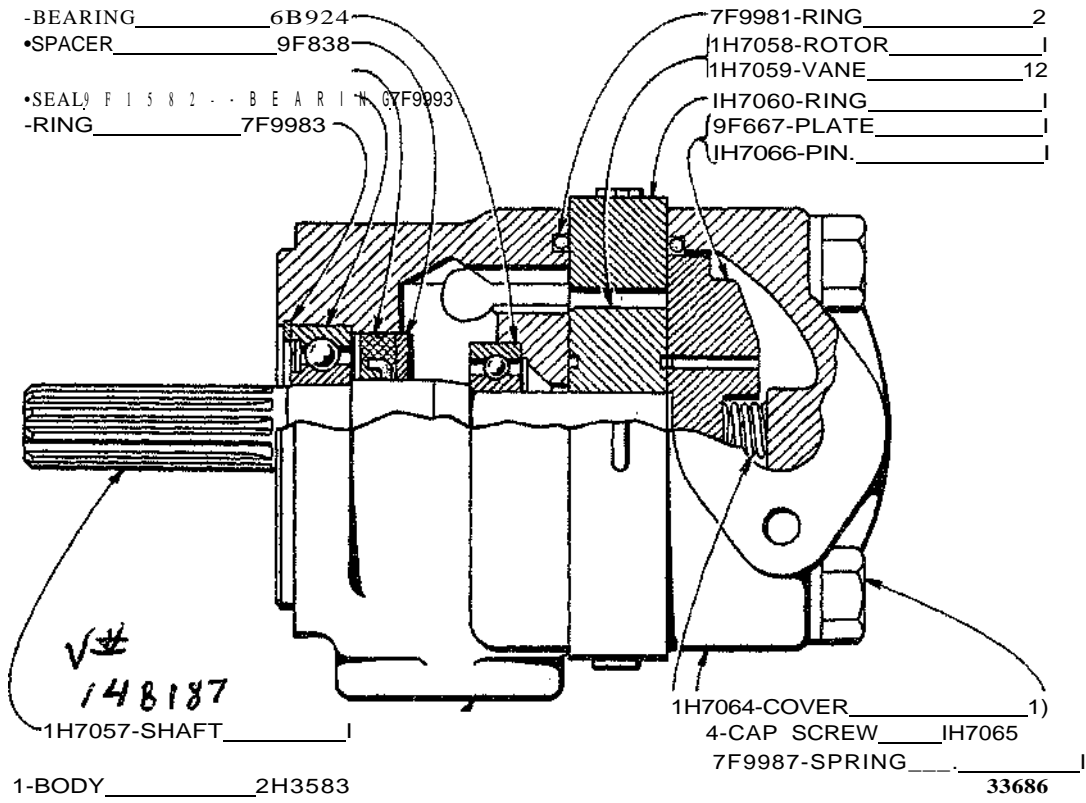
"CATERPILLAR" NO. 41 HYDRAULIC CONTROL



IH1340 PUMP ASSEMBLY

Part of IH3317, IH7052 and IH7053 Hydraulic Control Groups shown on Pages 12, 14, 16, 18, 20, 22, 24, 26, 28 and 30

34 "CATERPILLAR" NO. 41 HYDRAULIC CONTROL



1H1340 PUMP ASSEMBLY

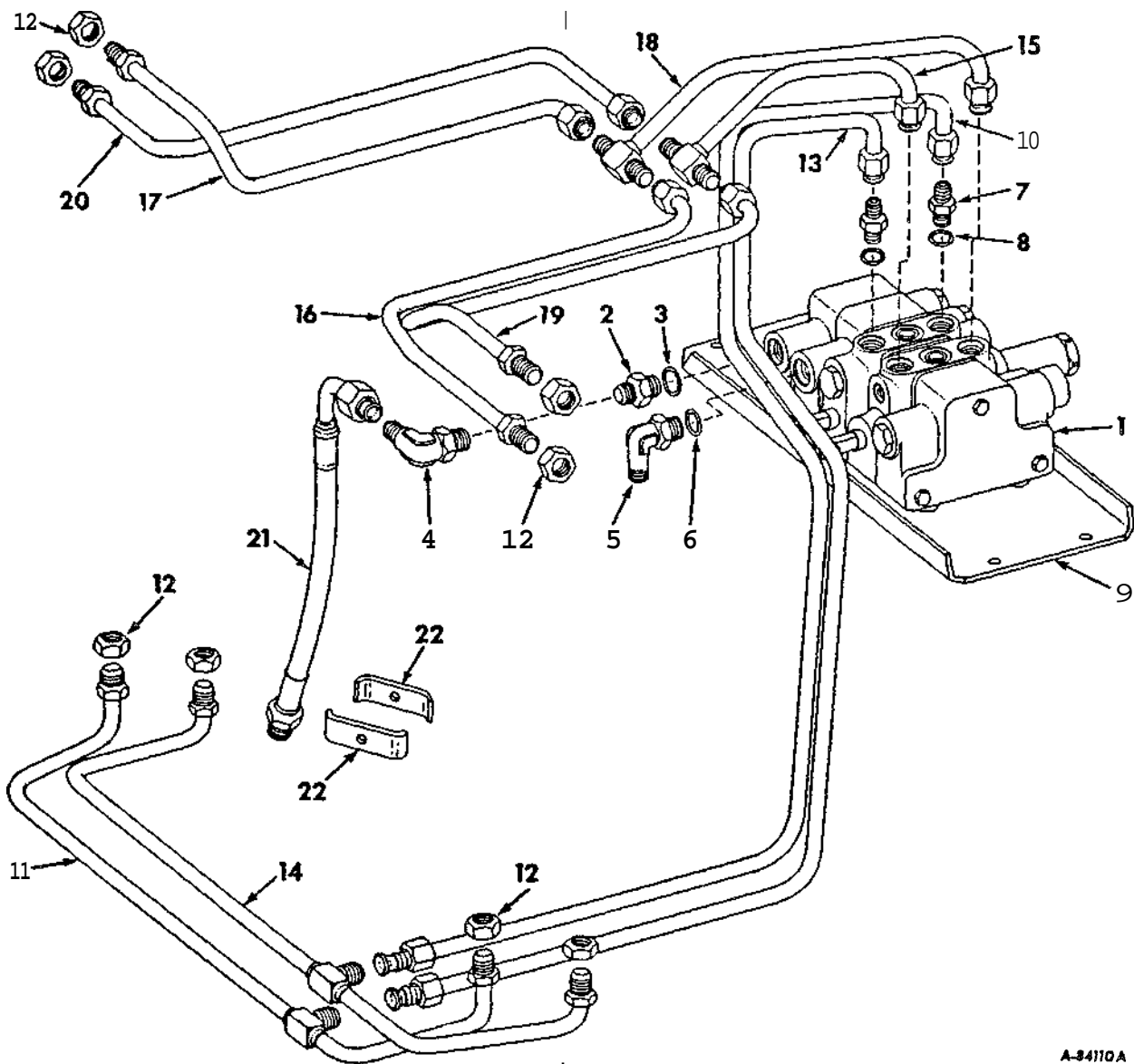
Part of IH3317, IH7052 and IH7053 Hydraulic Control Groups shown on Pages 12, 14, 16, 18, 20, 22, 24, 26, 28 and 30

PART
NUMBER

TC-123

REF.
NO.PART
NUMBER

TC-123

BOOM PIPES AND CONNECTIONS
-TRACTORS WITH SERIAL NO. 1902 & BELOW-BOOM PIPES AND CONNECTIONS -CONTINUED
-TRACTORS WITH SERIAL NO. 1902 & BELOW-

A-34170A

	BANK ASSY, HYDRAULIC VALVE -FOR COMPONENTS SEE LIST OF PARTS UNDER DETAILS OF HYDRAULIC VALVE BANK-	9 410 981	ELBOW, 1-85/16-12 37 DEG HYD FLARED TUBE ADJ STR THD 45 DEG
469 736 R1	REDUCER, LEFT END COVER INLET	296 247 R1	O-RING, 1-11/64 X 1-13/32 X 7/64
297 459 R1	O-RING, 1-3/64 X 1-9/32 X 1/8 -LEFT END COVER INLET-	9 410 204	CONNECTOR, 7/8-14 37 DEG HYD FLARED TUBE SHORT SWIVEL -2-
9 410 282	ELBOW, 7/8-14 37 DEG HYD FLARED TUBE 90 DEG SWIVEL	364 885 R1	O-RING, 3/4 X 15/16 X 3/32 -2-

HYDRAULIC SYSTEM
REF. NO. PART NUMBER

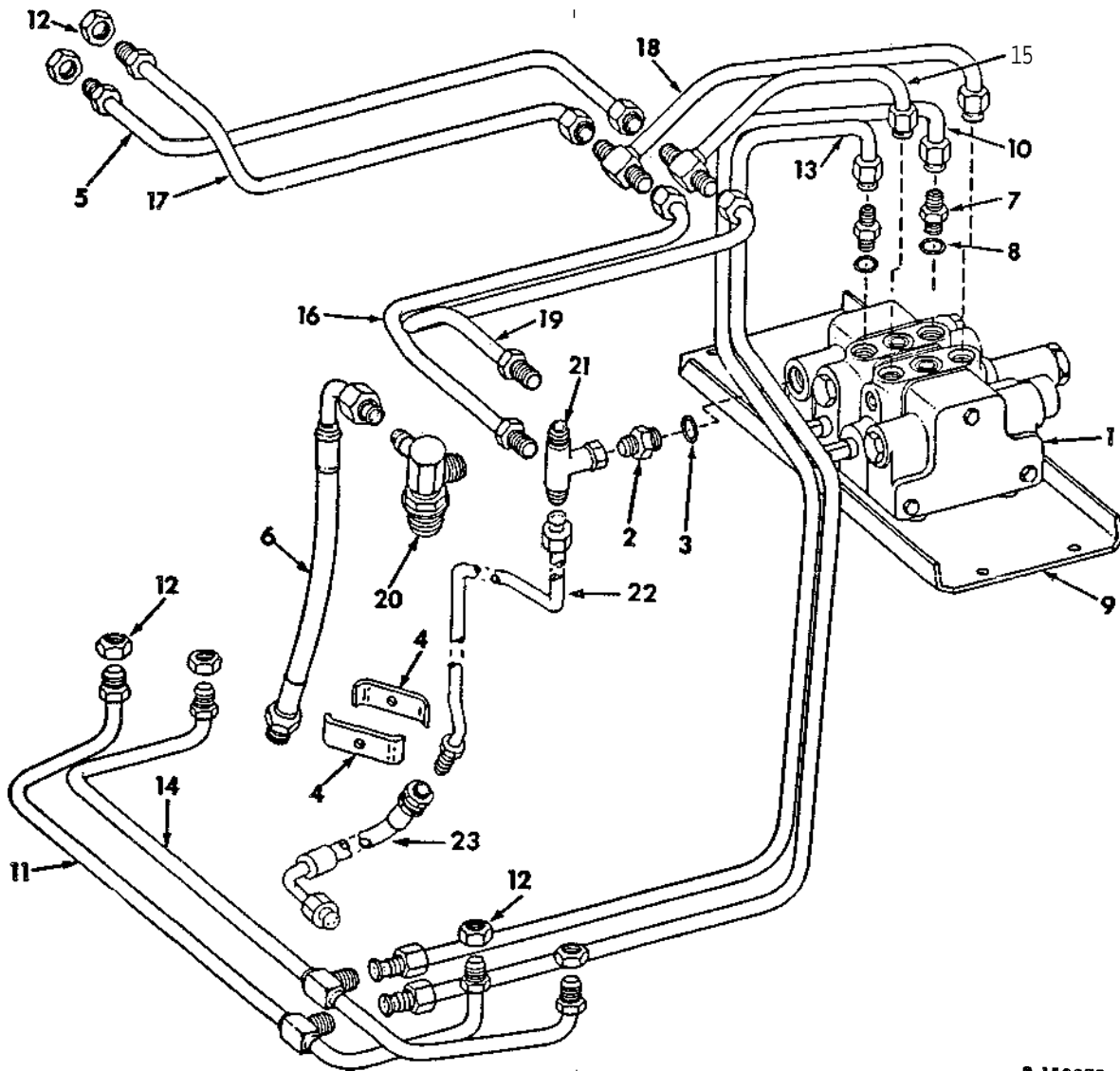
TC-123

HYDRAULIC SYSTEM
REF. NO. PART NUMBER

TC-123

BOOM PIPES AND CONNECTIONS
-TRACTORS W/SERIAL NO. 1903 & ABOVE-

BOOM PIPES AND CONNECTIONS -CONTINUED
-TRACTORS W/SERIAL NO. 1903 & ABOVE-



B-158878

BANK ASSY, HYD VALVE
-FOR COMPONENTS SEE LIST OF PARTS
UNDER DETAILS OF HYDRAULIC VALVE
BANK-

NOT USED IN THIS APPLICATION

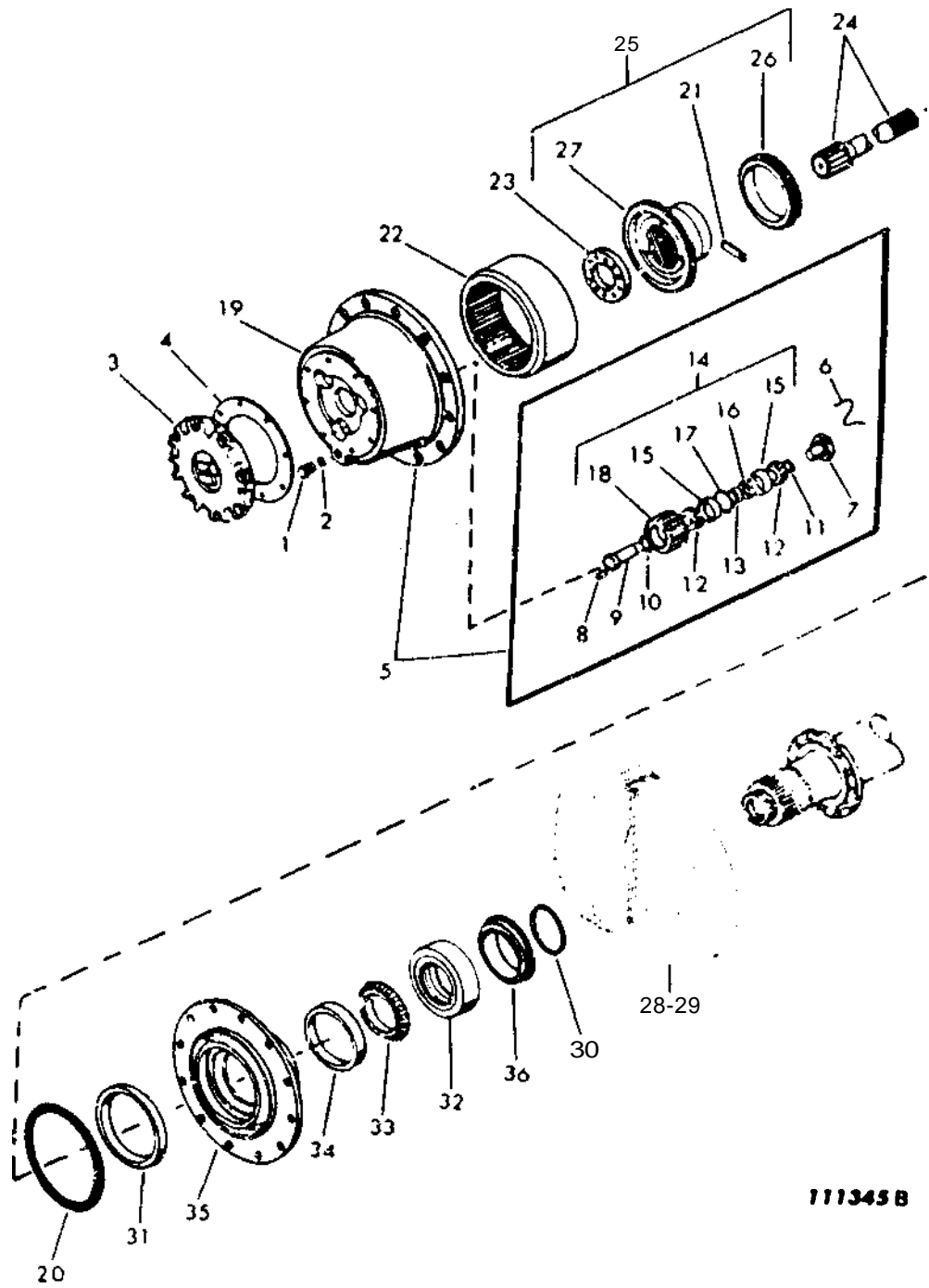
297 459 R1 O-RING, 7/8 OD TUBE

379 045 R1 CLAMP, HYDRAULIC PIPE -2-
102 634 NUT, 5/16-18 HEX.
179 825 SCREW, 5/16-18 X 1-7/8 HEX-HD CAP
103 320 WASHER, 5/16 MED LOCK

391 332 R11 PIPE ASSY, LH BUCKET RAISE

391 795 R91 HOSE ASSY, PRESSURE TO LH END COVER

SHAFT AND HUB (+)



111345 B