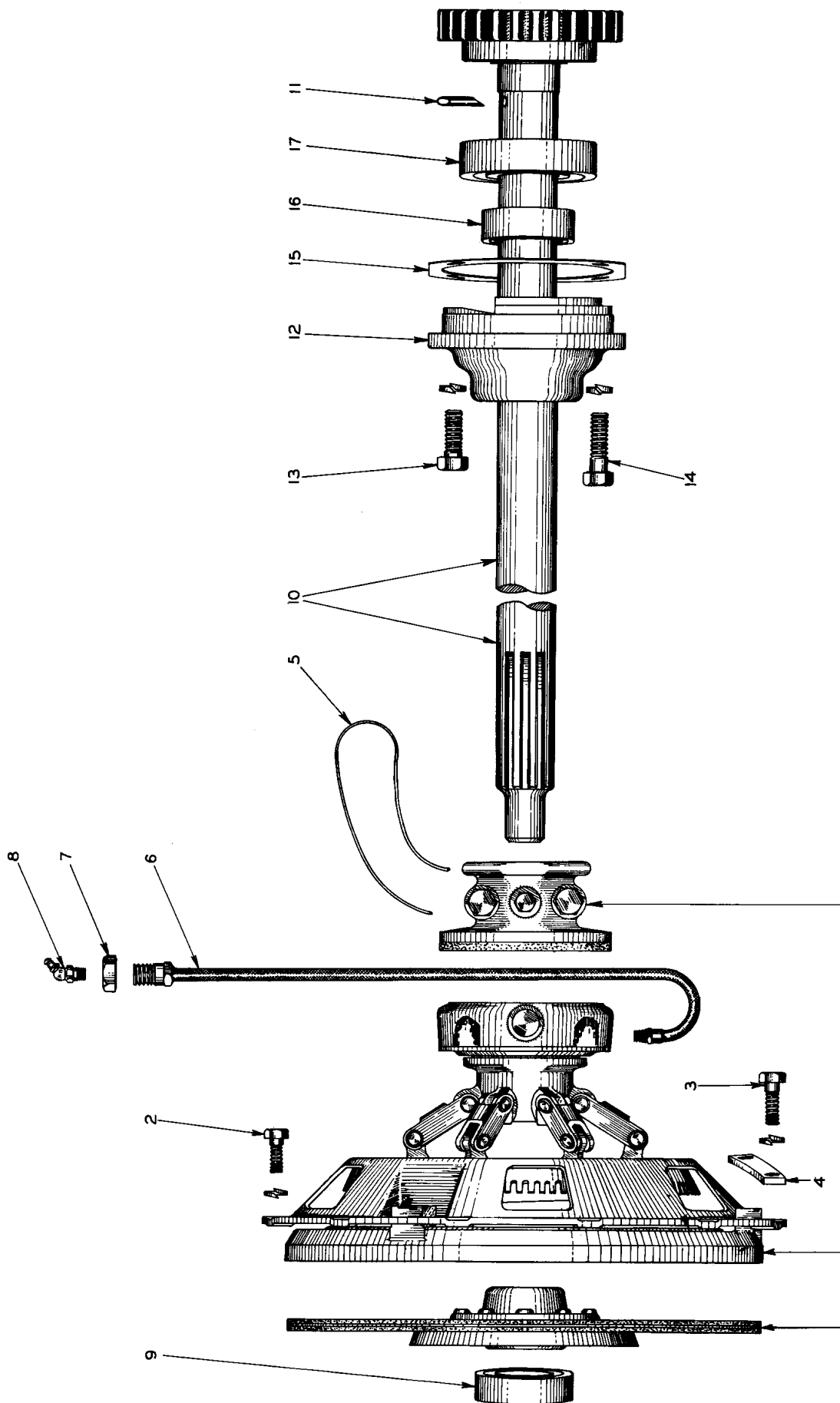


ENGINE CLUTCH CONTROL

ITEM	PART NUMBER	QTY.	DESCRIPTION	KIT NUMBER
1	041691	1	LEVER ASSEMBLY, operating (Includes item 3)(Tractors prior to #11151)	
2	052324	1	LEVER ASSEMBLY, operating (Includes item 3)(Tractors #11151 and up)	
3	034514	2	BUSHING, operating lever	
4	052591	1	GRIP, operating lever	
5	033072	2	PIN, control rod yoke	
	910967	2	PIN, cotter, 1/8" x 7/8"	
6	068389	1	YOKE, control rod	
7	037443	1	ROD, control	
	911043	1	NUT, 1/2"NF	
8	038516	1	LEVER, shifting yoke shaft (Used on tractors prior to #11151)	
9	046419	1	CAPSCREW, 3/8"NF x 2"	
	904206	1	LOCKWASHER, 3/8"	
	911041	1	NUT, 3/8"NF	
10	052323	1	LEVER, shifting yoke shaft (Used on tractors #11151 and up)	
11	046419	1	CAPSCREW, 3/8"NF x 2"	
	904206	1	LOCKWASHER, 3/8"	
	911041	1	NUT, 3/8"NF	
12	041689	1	SHAFT, shifting yoke, left	
13	040105	1	SHAFT, shifting yoke, right	
14	041180	1	YOKE, shifting	
15	035068	2	CAPSCREW, 1/2"NF x 2-1/4"	
	904208	2	LOCKWASHER, 1/2"	
	911043	2	NUT, 1/2"NF	
16	036997	2	KEY, #13 woodruff, 3/16" x 1", hardened	
17	040940	2	BLOCK, sliding, shifting yoke	

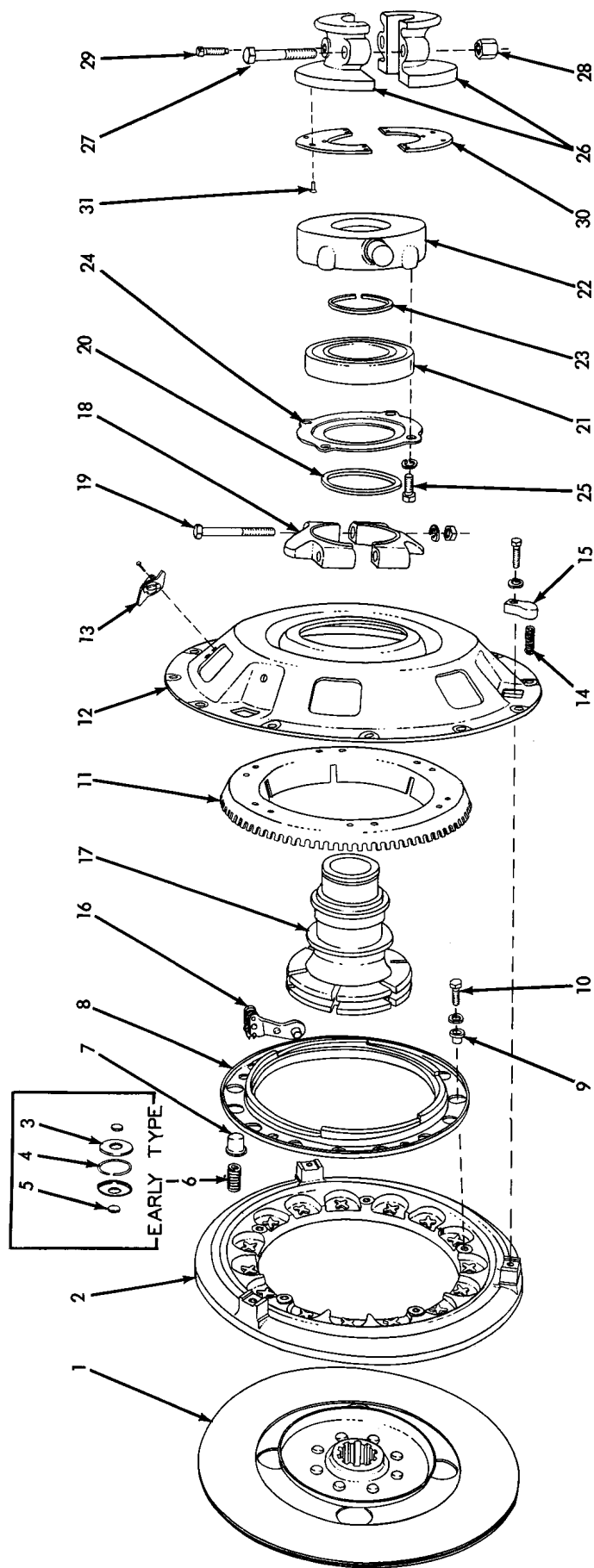


ENGINE CLUTCH

# ENGINE CLUTCH

ITEM	PART NUMBER	QTY.	DESCRIPTION	KIT NUMBER
1	-----	1	CLUTCH ASSEMBLY (AUBURN type. See pages 99 and 101 for repair parts)(Original equipment. Order CLUTCH ASSEMBLY 073855)	
	073855	1	CLUTCH ASSEMBLY (ROCKFORD type. See page 103 for repair parts)(Used for service replacement only)	
2	035439	12	CAPSCREW, 3/8"NC x 1" (2 less used on tractors No. 11721* thru 12125)	
3	013058	2	CAPSCREW, 3/8"NC x 1-1/4" (Tractors No. 11721* thru 12125 only) . . . . . 054982	
	904206	12	LOCKWASHER, 3/8"	
4	054985	1	WEIGHT, balancing (Tractors No. 11721* thru No. 12125 only) . . . . 054982	
5	023633	1	WIRE, locking, brake setscrew (1/16" x 12")	
6	045496	1	HOSE, lubricating, shifting sleeve bearing	
7	911049	1	NUT, jam, 5/8"NF	
8	915274	1	FITTING, lubricating, 45°, 1/8"NPT	
9	211013	1	BEARING, ball, clutch shaft, front	
10	044196	1	SHAFT AND GEAR (27 teeth)(Used on tractors prior to #2603. When making first replacement on tractors prior to #549 also furnish 1 CAGE 054432 and 1 SEAL 044120)	
	047636	1	SHAFT AND GEAR (28 teeth)(Standard on tractors #2603 thru #12345)	
	054433	1	SHAFT AND GEAR (25 teeth)(Standard on tractors #12345 and up)	
11	047645	1	SCOOP, oil, clutch shaft	
12	054432	1	CAGE, clutch shaft rear bearing (When making first replacement on tractors prior to #549 also furnish 1 SHAFT AND GEAR 044196 and 1 SEAL 044120)	
13	035733	3	CAPSCREW, 1/2"NC x 1-3/8"	
	904208	3	LOCKWASHER, 1/2"	
14	035236	1	CAPSCREW, 1/2"NC x 1-3/4"	
	904208	1	LOCKWASHER, 1/2"	
15	035185	1	GASKET, rear bearing cage	
16	032784	1	SEAL, oil, rear bearing (1/2" wide)(Tractors prior to #549)	
	044120	1	SEAL, oil, rear bearing (7/8" wide)(Tractors #549 and up)	
17	U-2604	1	BEARING, ball, clutch shaft, rear	

\*Including tractors serial Nos. 11050, 11691, 11695, 11699, 11700, 11715, 11716, 11718 and 11719.

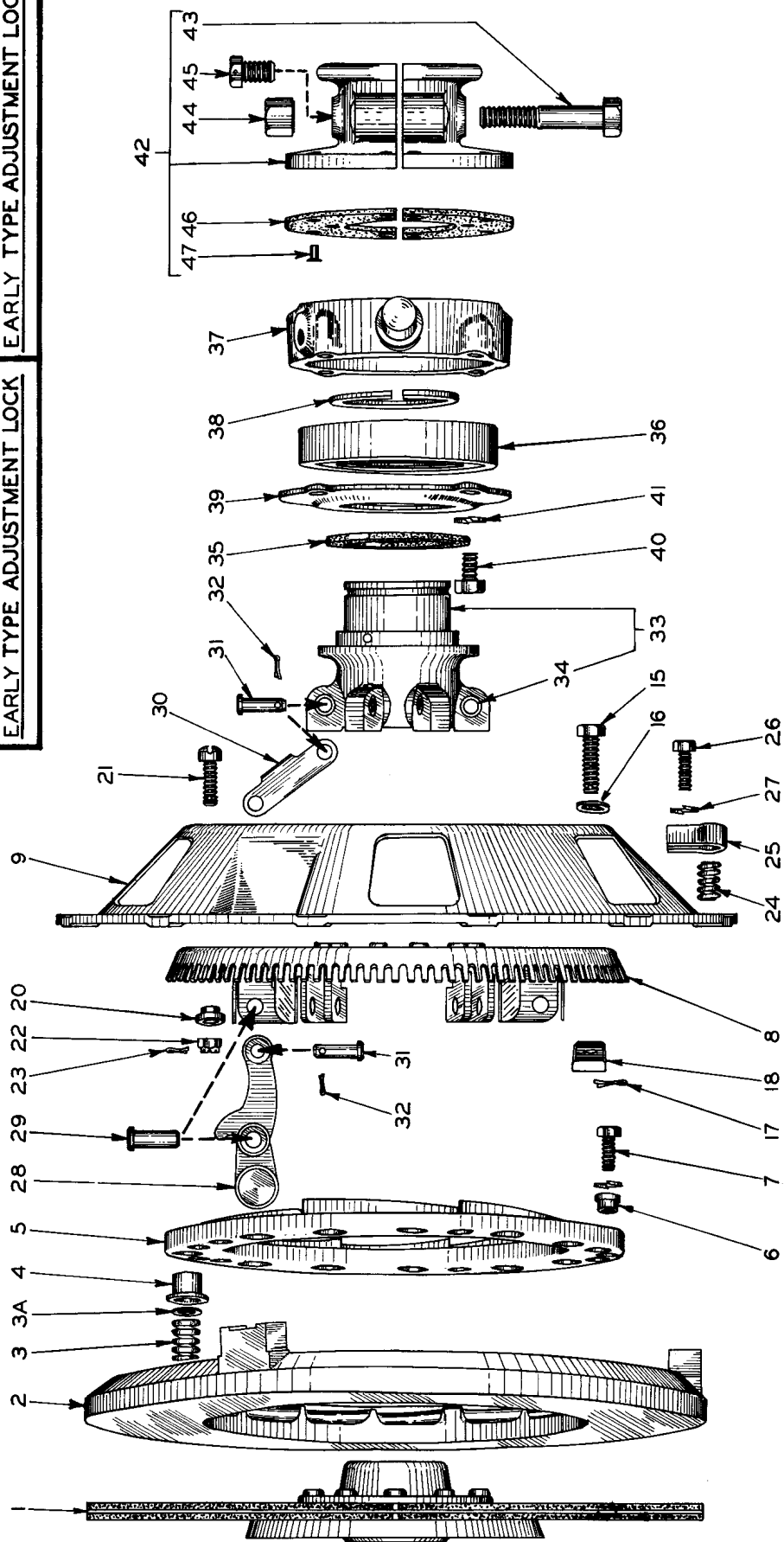
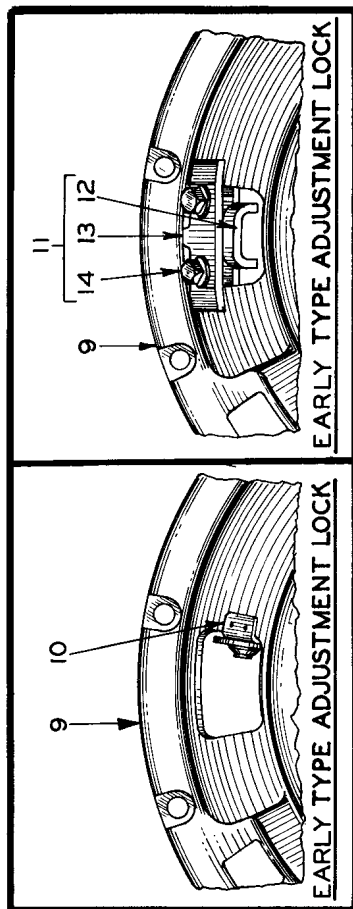


AUBURN CLUTCH PARTS (Early Type)

# AUBURN CLUTCH PARTS

USAGE: Tractors prior to serial No. 1353.

ITEM	PART NUMBER	QTY.	DESCRIPTION	KIT NUMBER
1	042122	1	PLATE ASSEMBLY, drive (Includes FACINGS which are cemented in place and cannot be serviced separately)	
	042123	2	FACING, driving plate (Facings are now cemented to the drive plate and will no longer be serviced after available stock is exhausted)	
	042660	36	RIVET, tubular, brass, fl-hd., 9/64" x 5/16"	
2	042124	1	PLATE, pressure	
NOTE: Items 3 thru 5 comprise the EARLY TYPE PRESSURE SPRING ARRANGEMENT as used on tractors prior to serial No. 781. Can be replaced with later type parts by ordering CHANGEOVER KIT 047237.				
3	042125	24	WASHER, spring, pressure plate	
4	042214	12	RING, spacing, pressure plate spring washer	
5	042126	24	BUTTON, pressure plate spring washer	
6	044752	15	SPRING, pressure (Used on tractors #781 and up)	047237
7	044753	15	CUP, pressure spring (Used on tractors #781 and up)	047237
8	044750	1	RING, pressure (When making first replacement on tractors prior to #781 also furnish 15 SPRINGS 044752 and 15 CUPS 044753)	047237
9	042128	5	SPACER, pressure ring capscrews	
10	045312	5	CAPSCREW, 5/16"NC x 3/4"	
	904205	5	LOCKWASHER, 5/16"	
11	042135	1	RING ASSEMBLY, adjusting (Includes 6 wear PLATES)	
12	055041	1	PLATE, back (When making first replacement also furnish CHANGEOVER KIT 054982 to assure fit)	
13	-----	1	LOCK ASSEMBLY, adjusting ring (Riveted to back plate. Not serviced. Order CHANGEOVER KIT 054982)	
14	042130	3	SPRING, pressure plate retracting	
15	042129	3	RETAINER, pressure plate retracting spring	
	903771	3	CAPSCREW, 5/16"NC x 7/8"	
	904205	3	LOCKWASHER, 5/16"	
16	043381	6	LEVER ASSEMBLY, actuating (Includes ROLLERS and PINS. Serviced only as a unit)	047237
17	047238	1	SLEEVE ASSEMBLY, shifting (Includes BUSHING which is not serviced separately)(When making first replacement on tractors #781 thru #822 also furnish 1 CLAMP 047239, 2 CAPSCREWS 042265, 2 NUTS 911041 and 2 LOCKWASHERS 904206. When required for tractors prior to #781 order CHANGEOVER KIT 047237 instead.	047237
18	047239	1	CLAMP, stop, shifting sleeve (2 halves)(Used on tractors #823 and up)	047237
19	042265	2	CAPSCREW, 3/8"NF x 3-1/4"	047237
	904206	2	LOCKWASHER, 3/8"	047237
	911041	2	NUT, 3/8"NF	047237
20	042141	1	RING, sealing, shifting sleeve bearing (felt)	
21	042994	1	BEARING, ball, shifting sleeve	
22	042143	1	YOKE, shifting	
23	042144	1	RING, snap, shifting sleeve bearing	
24	042142	1	RETAINER, shifting sleeve bearing	
25	035979	4	CAPSCREW, 3/8"NF x 5/8"	
	904206	4	LOCKWASHER, 3/8"	
26	042145	1	BRAKE ASSEMBLY, clutch shaft (Includes items 27 thru 31)	
27	035278	2	CAPSCREW, 1/2"NF x 2-3/4"	
28	038234	2	NUT, high, 1/2"NF	
29	042406	1	SETSCREW (drilled head, 1/2"NC x 23/32")	
30	042146	2	FACING, shaft brake (half only)	
31	042660	14	RIVET, tubular, brass, fl-hd., 9/64" x 5/16"	



AUBURN CLUTCH PARTS (Late Type)

# AUBURN CLUTCH PARTS

\* Tractors serial No. 1353 thru 11721, except Nos. 11050, 11691, 11695, 11699, 11700, 11715, 11716, 11718 and 11719.

\*\* Tractors serial No. 11721 thru 12125, including Nos. 11050, 11691, 11695, 11699, 11700, 11715, 11716, 11718 and 11719.

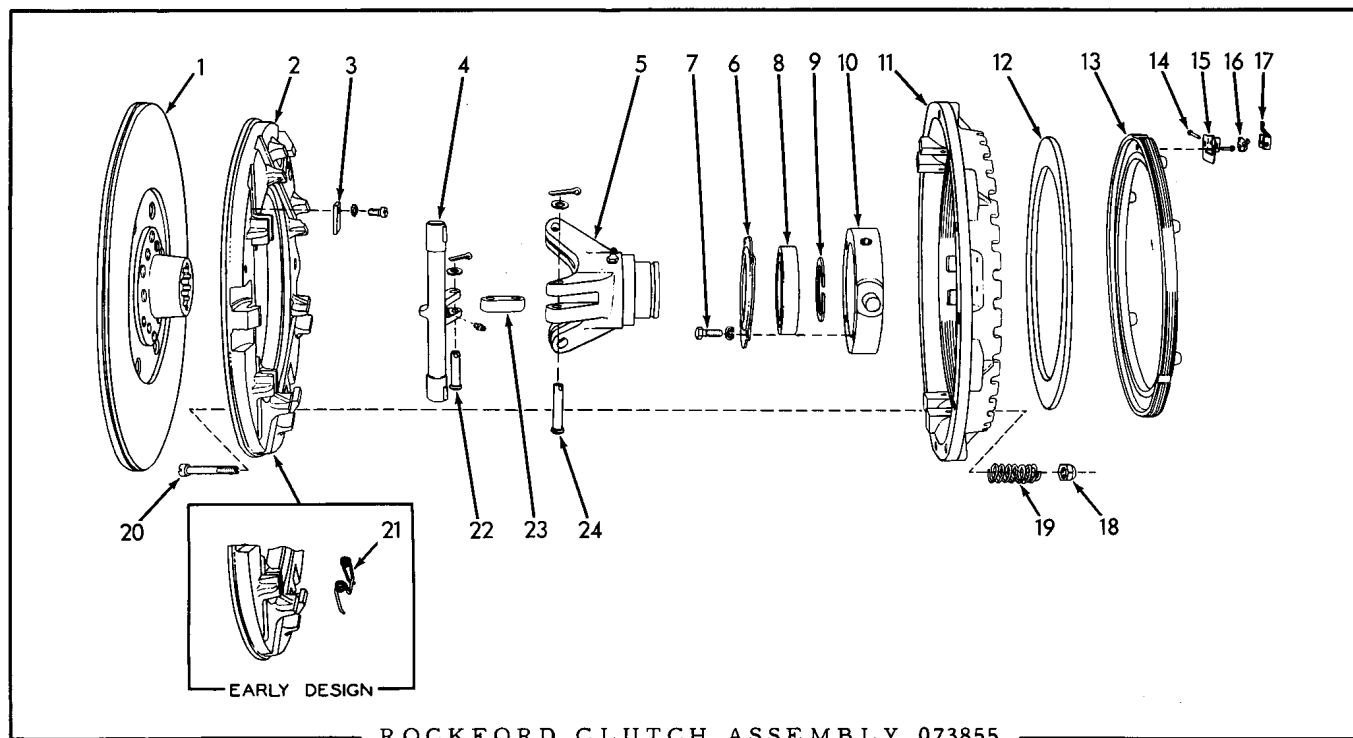
\*\*\* Tractors serial No. 12126 and up

ITEM	PART NUMBER	QUANTITY			DESCRIPTION	KIT NUMBER
		*	**	***		
1	042122	1	1	1	PLATE ASSEMBLY, drive (Includes FACINGS which are cemented in place and cannot be serviced separately)	
	042123	2	2	2	FACING, drive plate (Facings are now cemented to the drive plate and will no longer be serviced after available stock is exhausted)	
	042660	36	36	36	RIVET, tubular, brass, fl-hd., 9/64" x 5/16"	
2	042124	1	1	1	PLATE, pressure	
3	078278	15	15	15	SPRING, pressure	
3A	912369	-	-	15	WASHER, spacing, pressure spring (1/32" thick)	
4	044753	15	15	15	CUP, pressure spring	
5	044750	1	1	-	RING, pressure	
	055754	-	-	1	RING, pressure	
6	042128	5	5	5	SPACER, pressure ring capscrews	
7	045312	5	5	5	CAPSCREW, 5/16"NC x 3/4"	
	904205	5	5	5	LOCKWASHER, 5/16"	
8	048168	1	1	-	RING ASSEMBLY, adjusting (Includes riveted wear PLATES and BRACKETS)	
	055755	-	-	1	RING ASSEMBLY, adjusting (Includes riveted wear PLATES, CLIPS and BRACKETS)	
9	-----	1	-	-	PLATE, back (Not serviced. Order 1 PLATE 055043 and 1 CHANGEOVER KIT 054982)	
	055043	-	1	-	PLATE, back	
	055753	-	-	1	PLATE, back	
10	-----	1	-	-	LOCK ASSEMBLY, adjusting ring (Not serviced. Order CHANGEOVER KIT 054982)	
11	054983	-	1	-	LOCK ASSEMBLY, adjusting ring (Consists of items 12 thru 14) . . . . .	054982
12	054984	-	1	-	PLATE, adjusting ring lock	
13	054986	-	1	-	CLAMP, adjusting ring lock	
14	914663	-	2	-	CAPSCREW, 5/16"NF x 1-1/8"	
	904205	-	2	-	LOCKWASHER, 5/16"	
15	055760	-	-	1	SCREW, adjusting ring lock	
16	906960	-	-	1	LOCKWASHER, internal teeth, 3/8"	
17	900801	-	-	1	PIN, cotter, 3/32" x 3/4"	
18	055761	-	-	1	PLATE, adjusting ring lock	
20	055757	-	-	2	SPACER, guiding, adjusting ring	
21	055756	-	-	2	CAPSCREW (fil-hd., 5/16"NF x 1")	
22	913238	-	-	2	NUT, castle, 5/16"NF	
23	904001	-	-	2	PIN, cotter, 3/32" x 1/2"	
24	042130	3	3	3	SPRING, pressure plate retracting	
25	042129	3	3	3	RETAINER, pressure plate retracting spring	
26	903771	3	3	-	CAPSCREW, 5/16"NC x 7/8"	
	074614	-	-	3	CAPSCREW, dog-pt., 5/16"NC x 1-1/16"	
27	904205	3	3	3	LOCKWASHER, 5/16"	

(Continued)

# AUBURN CLUTCH PARTS (Continued)

ITEM	PART NUMBER	QUANTITY			DESCRIPTION	KIT NUMBER
		*	**	***		
28	048172	6	6	-	LEVER, actuating (May be replaced in complete sets by LEVER 055758 and LINK 055759)	
	055758	-	-	6	LEVER, actuating	
29	048171	6	-	-	PIN, actuating lever (Used on early units only)	
	900805	6	-	-	PIN, cotter, 1/8" x 3/4"	
	052354	6	6	6	PIN, actuating lever (Not drilled for cotter pin)	
30	048174	12	12	-	LINK, actuating lever (May be replaced in complete sets by LINK 055759 and LEVER 055758)	
	055759	-	-	6	LINK, actuating lever	
31	048173	12	12	12	PIN, actuating lever link	
32	904001	12	12	12	PIN, cotter, 3/32" x 1/2"	
33	048175	1	1	1	SLEEVE ASSEMBLY, shifting (Includes item 34. Large bronze bushing is not serviced separately)	
34	048195	6	6	6	BUSHING, shifting sleeve (steel)	
35	042141	1	1	1	RING, sealing, shifting sleeve bearing (felt)	
36	042994	1	1	1	BEARING, ball, shifting sleeve	
37	042143	1	1	1	YOKE, shifting	
38	042144	1	1	1	RING, snap, shifting sleeve bearing	
39	042142	1	1	1	RETAINER, shifting sleeve bearing	
40	035979	4	4	4	CAPSCREW, 3/8"NF x 5/8"	
41	904206	4	4	4	LOCKWASHER, 3/8"	
42	042145	1	1	1	BRAKE ASSEMBLY, clutch shaft (Includes items 43 thru 47)	
43	035278	2	2	2	CAPSCREW, 1/2"NF x 2-3/4"	
44	038234	2	2	2	NUT, high, 1/2"NF	
45	042406	1	1	1	SETSCREW (drilled head, 1/2"NC x 23/32")	
46	042146	2	2	2	FACING, shaft brake (half only)	
47	042660	14	14	14	RIVET, tubular, brass, fl-hd. 9/64" x 5/16"	





# ROCKFORD CLUTCH ASSEMBLY 073855

USAGE: For service replacement only. Not used as original equipment.

ITEM	PART NUMBER	QTY.	DESCRIPTION	KIT NUMBER
1	073895	1	PLATE ASSEMBLY, driven (Facings are cemented and are not serviced separately)	
2	078669	1	PLATE ASSEMBLY, pressure (Includes item	
3	223585	6	BLOCK, cam (Recommend replacement in sets)	043397
	901226	6	SCREW, machine, fil.-hd., 1/4"NC x 1/2"	043397
	914593	6	LOCKWASHER, ext-tooth, 1/4"	043397
4	073906	3	CAMSHAFT ASSEMBLY (Includes FITTING indented below)(Recommend replacement in sets)	
	914465	3	FITTING, lubricating, straight, 1/8"NPT	
5	077697	1	SLEEVE ASSEMBLY, shifting (Includes 2 BUSHINGS which are not serviced separately, and FITTING indented below)	
	914465	1	FITTING, lubricating, straight, 1/8"NPT	
6	073739	1	PLATE, retaining, shifting sleeve bearing	
7	045312	4	CAPSCREW, 5/16"NC x 3/4"	
	904205	4	LOCKWASHER, 5/16"	
8	073647	1	BEARING, ball, shifting sleeve	
9	030801	1	RING, retaining, shifting sleeve bearing	
10	073854	1	CARRIER, shifting sleeve bearing	
11	{ 073625	1	PLATE, back (Used on early units with item 4 only)	
	{ 078670	1	PLATE, back (Used on late units with items 5 thru 7)	
12	030795	1	PLATE, adjusting ring	
13	056297	1	RING ASSEMBLY, adjusting (Includes items 15 thru 18)	
14	040784	1	PIN, hinge, adjustment lock	
15	040781	1	BRACKET, mounting, adjustment lock	
	900764	2	RIVET, fl.-hd., 3/16" x 1/2"	
16	040783	1	SPRING, adjustment lock	
17	040782	1	LOCK, adjustment	
NOTE: Items 18 thru 20 were not used on early units. See item 21.				
18	073927	3	NUT, retracting spring screw (self-locking, 5/16"NF)	
19	078667	3	SPRING, pressure plate retracting	
20	078668	3	SCREW, retracting spring (fil.-hd., 5/16"NF x 2-3/4")	
21	030805	3	SPRING, pressure plate retracting (Early units only)	
22	040221	3	PIN, connecting link (short)	
	901165	3	WASHER, plain, U.S. std., 5/16"	
	913984	3	PIN, cotter, 1/8" x 5/8"	
23	073626	3	LINK, connecting	
24	040220	3	PIN, connecting link (long)	
	901165	3	WASHER, plain, U.S. std., 5/16"	
	913984	3	PIN, cotter, 1/8" x 5/8"	

NOTE: Clutch BRAKE ASSEMBLY 042145, which was formerly furnished as a part of the AUBURN Clutch Assemblies, is also used with the ROCKFORD Clutch Assembly but must be ordered separately, if required.