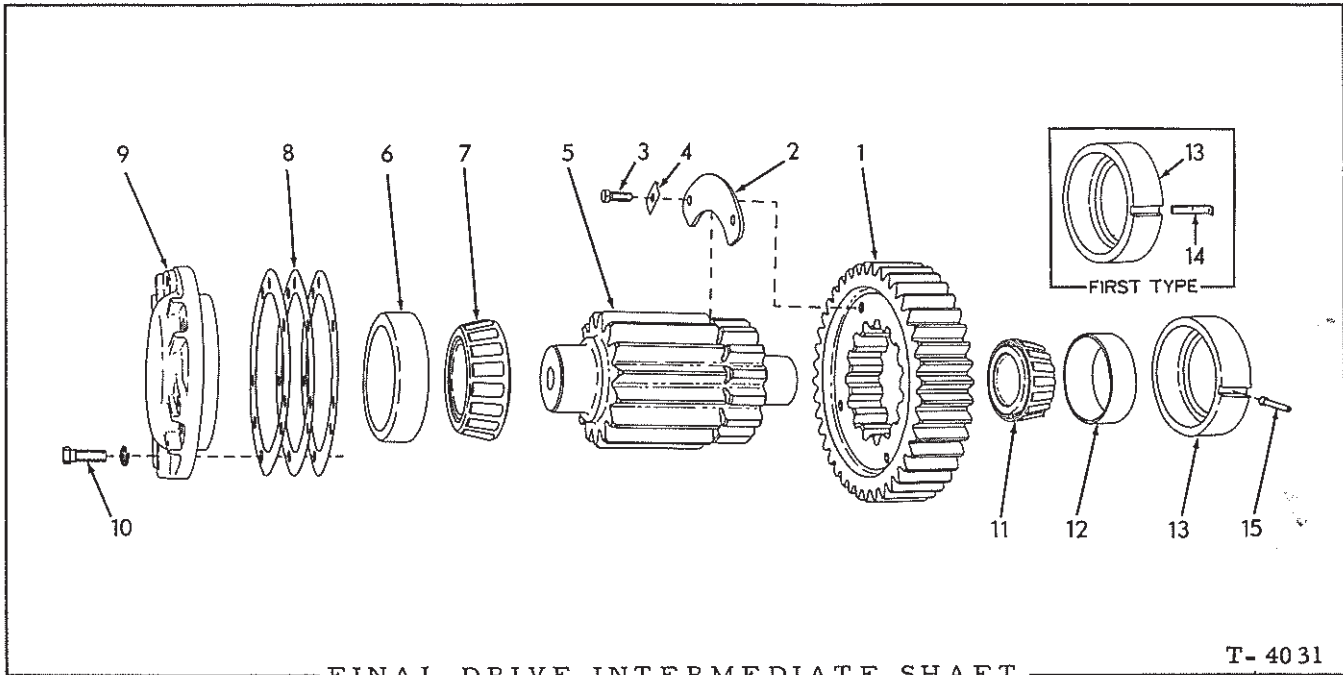


856529



FINAL DRIVE INTERMEDIATE SHAFT

T-4031

ITEM PART NO. QTY. DESCRIPTION

1	642642	2	GEAR (40 teeth)
2	056508	4	LOCK, gear retaining
3	035439	8	CAPSCREW, 3/8"NC x 1"
4	052444	8	LOCK, capscREW
5	642640	2	PINION (15 teeth)
6	069328	2	CUP, outer bearing
7	069441	2	CONE ASSEMBLY, outer bearing
8	093250	4	SHIM, bearing adjustment (.005" thick. Use as req'd)
	093249	4	SHIM, bearing adjustment (.007" thick. Use as req'd)
	093248	14	SHIM, bearing adjustment (.010" thick. Use as req'd)
	621619	4	SHIM, bearing adjustment (.005" thick. Use as req'd)
	621620	4	SHIM, bearing adjustment (.007" thick. Use as req'd)
	621621	14	SHIM, bearing adjustment (.010" thick. Use as req'd)

12/17/52  
 let 77652  
 350<sup>52</sup> / 525

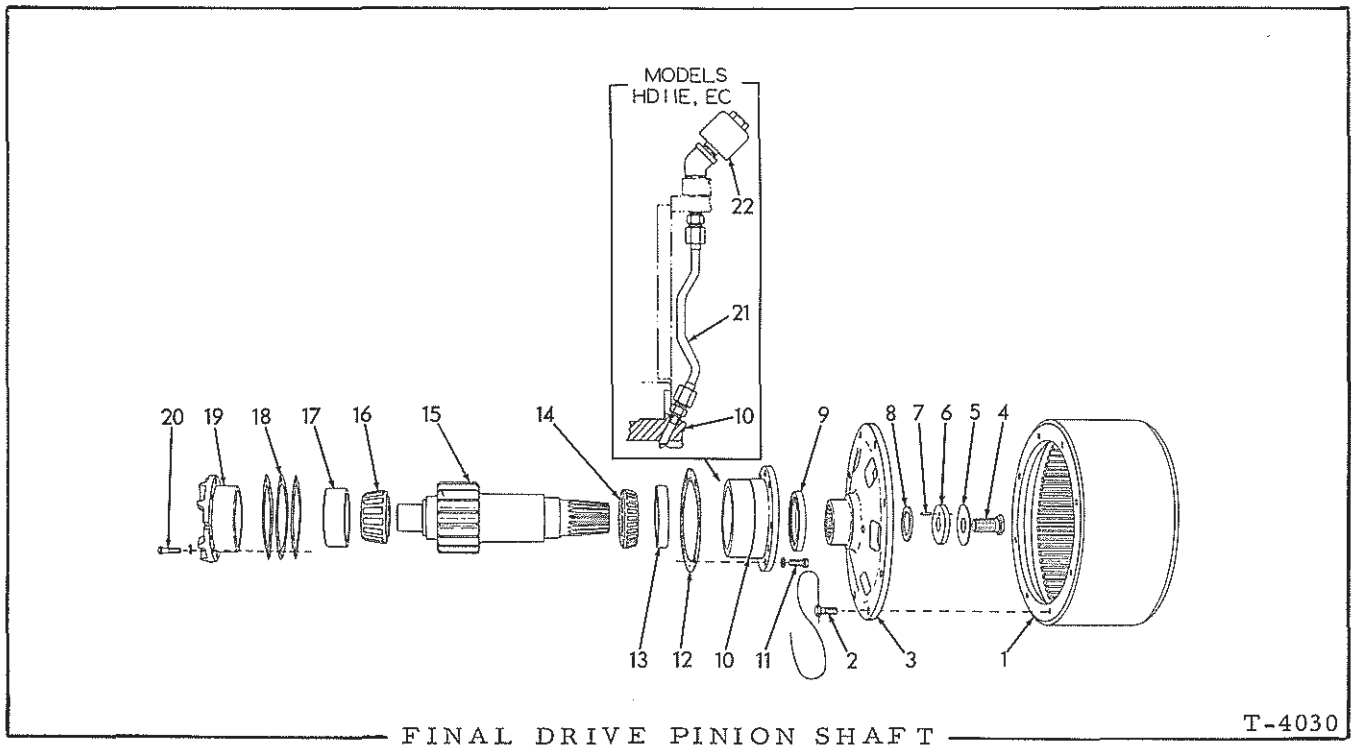
Not used on tractors #6025 thru #6195, including #6211

Used on tractors #6025 thru #6195 only, including #6211

(Continued)

FINAL DRIVE INTERMEDIATE SHAFT (Continued)

ITEM	PART NO.	QTY.	DESCRIPTION
9	084901	2	CAGE, outer bearing (Used prior to tractor #3998)
	621593	2	CAGE, outer bearing (Used on tractors #6025 thru #6195 only, including #6211)
	621601	8	PIN, dowel, 5/8" x 1-5/8"
	093256	2	CAGE, outer bearing (Effective with tractor #3998)(Not used on tractors #6025 thru #6195, including #6211)
	622036	2	CAGE KIT, outer bearing (Consists of 1 CAGE with 1/8" oversize O. D., 4 DOWELS 621601 and set of SHIMS. Use to salvage final drive housings with worn bore. Cage must have O. D. finish-machined for tight fit in housing bore.
10	035018	10	CAPSCREW, 1/2"NF x 1-1/2"
	904208	10	LOCKWASHER, 1/2"
	023465	10	CAPSCREW, 5/8"NF x 1-3/4"
	904209	10	LOCKWASHER, 5/8"
			} Used prior to tractor #3998
			} Effective with tractor #3998
11	211582	2	CONE ASSEMBLY, inner bearing
12	211581	2	CUP, inner bearing
13	084297	2	CAGE, inner bearing
14	084335	2	KEY, locking, inner bearing cage (Used prior to tractor #1237)
15	089320	2	PIN, locking, inner bearing cage (Effective with tractor #1237)



\* All Model HD11B, ES, S, F, FC tractors; also Model HD11E, EC tractors prior to serial No. 10001  
 \*\* Model HD11E, EC tractors serial No. 10001 and up

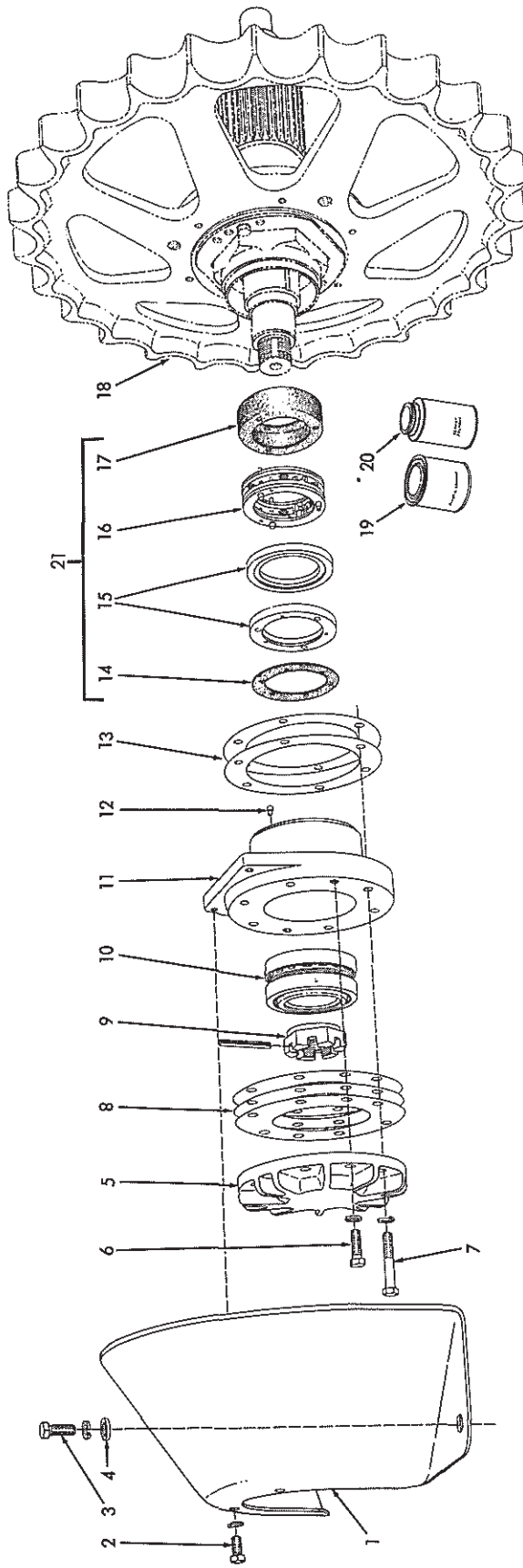
ITEM	PART NO.	QTY.		DESCRIPTION
		*	**	
1	056801	2	-	DRUM, brake
	631316	-	2	DRUM, brake
2	090767	16	-	CAPSCREW, drilled-hd., 1/2"NC x 1-3/16"
	023756	4	-	WIRE, locking, 1/16" x 26"
	650835	-	16	BOLT, self-locking, 1/2"NC x 1"
3	056522	2	-	HUB, brake drum
	624559	-	2	HUB, brake drum
4	630045	2	2	CAPSCREW, hub retaining (1"NF x 1-3/4")
5	630052	2	2	LOCK, hub retaining capscrew
6	623783	2	-	WASHER ASSEMBLY, hub retaining (Includes item 7)
	631584	-	2	WASHER ASSEMBLY, hub retaining (Includes item 7)
7	035793	2	2	PIN, hub retaining washer
8	056513	2	2	WASHER, sealing, brake drum hub
9	628940	2	-	SEAL, oil
	628320	-	2	SEAL, oil

(Continued)

FINAL DRIVE PINION SHAFT (Continued)

ITEM	PART NO.	QTY.		DESCRIPTION	
		*	**		
10	056788	2	-	CAGE, inner bearing	
	631577	-	2	CAGE, inner bearing	
11	070469	12	12	CAPSCREW, 1/2"NF x 1-1/4"	
	904208	12	12	LOCKWASHER, 1/2"	
12	056512	2	-	GASKET, inner bearing cage	
	633904	-	2	GASKET, inner bearing cage	
13	057005	2	2	CUP, inner bearing	
14	057006	2	2	CONE ASSEMBLY, inner bearing	
15	642641	2	2	PINION (16 teeth)	
16	057004	2	2	CONE ASSEMBLY, outer bearing	
17	057003	2	2	CUP, outer bearing	
18	084905	4	4	SHIM, bearing adjustment (.005" thick)	} Use as required
	084904	4	4	SHIM, bearing adjustment (.007" thick)	
	084903	14	14	SHIM, bearing adjustment (.010" thick)	
19	084319	2	2	CAGE, outer bearing	
20	012992	8	8	CAPSCREW, 3/8"NF x 1-1/4"	
	904206	8	8	LOCKWASHER, 3/8"	
21	-----	-	2	TUBE ASSEMBLY, vent (Includes nuts)(Used prior to tractor #11245. Order TUBE ASSEMBLY 650128 and 2 CONNECTORS 919171)	
	919766	-	4	CONNECTOR, flare type, 5/16" tube, 1/8"NPT male	
	650128	-	2	TUBE ASSEMBLY, vent (Includes nuts)(Effective with tractor #11245)	
	919171	-	4	CONNECTOR, flare type, 1/4" tube, 1/8"NPT male	
22	050748	-	2	BREATHER	
	910149	-	2	ELBOW, street, 45°, 3/8"NPT	

[5 #51]



I-16298

FINAL DRIVE OUTBOARD BEARING AND SEAL

FINAL DRIVE OUTBOARD BEARING AND SEAL

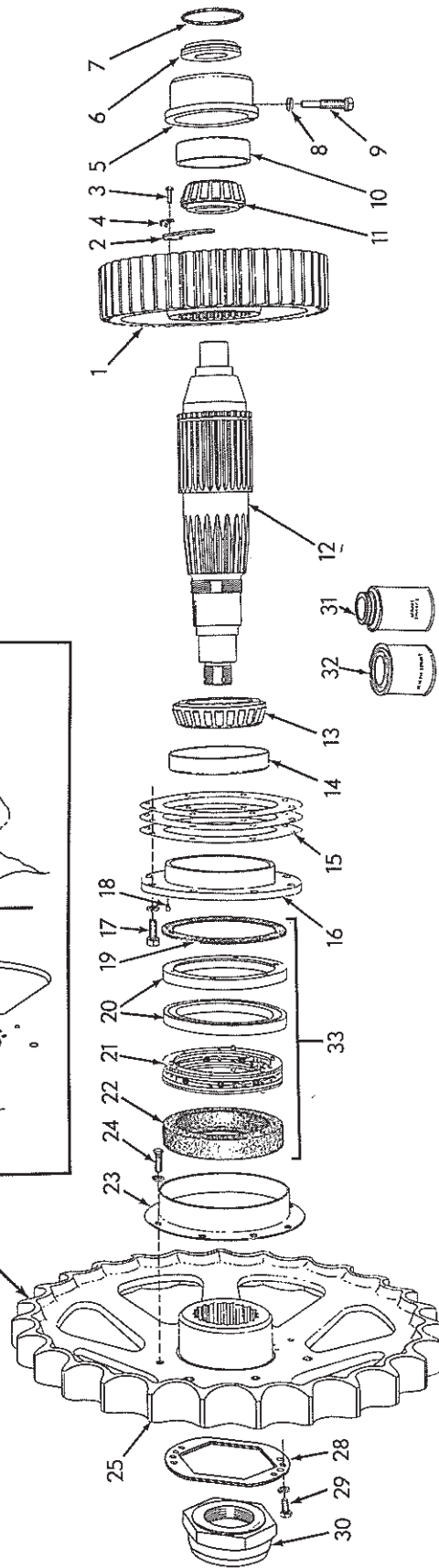
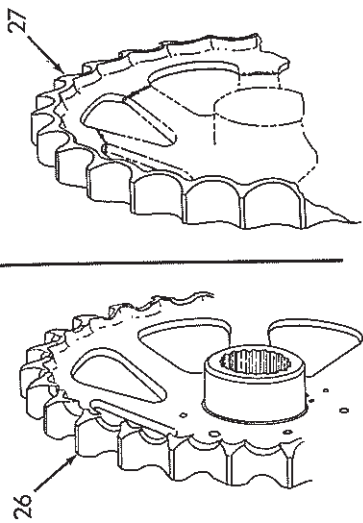
ITEM	PART NO.	QTY.	DESCRIPTION
1	084326	2	GUARD, sprocket (Special equipment)
2	035221	4	CAPSCREW, 1/2"NC x 1"
3	070469	4	CAPSCREW, 1/2"NF x 1-1/4"
4	064531	4	WASHER, plain
	904208	8	LOCKWASHER, 1/2"
5	084303	2	COVER, outboard bearing
6	035018	4	CAPSCREW, 1/2"NF x 1-1/2"
7	070403	12	CAPSCREW, 1/2"NF x 3"
	904208	16	LOCKWASHER, 1/2"
8	084313	4	SHIM, outer bearing cap (.005" thick. Use as req'd)
	084312	4	SHIM, outer bearing cap (.007" thick. Use as req'd)
	084311	14	SHIM, outer bearing cap (.010" thick. Use as req'd)
9	058925	2	NUT, retaining, outer bearing
	917904	2	PIN, roll, 5/16" x 3"
10	058702	2	BEARING, roller, outboard (Each consists of 1 roller assembly and 2 cups. Serviced only as a unit)
11	084271	2	CAGE, outboard bearing
12	084432	6	PIN, outer seal ring-(See item 21)
13	069080	12	SHIM, outboard bearing cage (.015" thick. Use as req'd)
14	069106	2	GASKET, seal ring
15	081787	4	RING, outer seal
16	084337	2	FOLLOWER ASSEMBLY, outer seal (Serviced only as a unit)
17	058814	2	BOOT, outer seal
18	-----	-	SPROCKET (See page 335)
19	033288	-	CEMENT, neoprene, 1/2" pint can
20	054890	-	SOLVENT, neoprene cement, 1/2 pint can
21	091972	2	SEAL KIT (Includes parts for one (1) side only; items 12 and 14 thru 17)

See item 21

For cement-  
ing boots and  
gaskets

4083  
4050

SKELETON SPROCKET — SPROCKET RIM



18,934 S<sup>TH</sup>

### FINAL DRIVE SPROCKET, SHAFT AND GEAR

\* All Model HD11B, ES, S, F, FC tractors; also Model HD11E, EC tractors prior to serial No. 10001  
 \*\* Model HD11E, EC tractors serial No. 10001 and up; also used on all prior models equipped with extreme-duty service replacement tracks

ITEM	PART NO.	QTY.		DESCRIPTION
		*	**	
1	70642643 <i>056972</i>	2	2	GEAR, driving <i>46 T cutt</i>
2	70058826	4	4	LOCK, gear retaining
3	70035439	8	8	CAPSCREW, 3/8"NC x 1"
4	70052444	8	8	LOCK, capscrew
5	70084289	2	2	CAGE, inner bearing cup
6	70057273	2	-	COVER, inner bearing (Used prior to tractor #2502)
	70091571	2	2	COVER, inner bearing (Effective with tractor #2502)
7	70923829	2	-	O-RING, inner bearing cover (Used prior to tractor #2502)
	70923817	2	2	O-RING, inner bearing cover (Effective with tractor #2502)
8	70049918	2	2	WASHER, bearing cage setscrew (copper)
9	70084278	2	2	SETSCREW, bearing cage (hex-hd., dog-pt., 5/8"NF x 3-3/8")
10	70052070	2	2	CUP, inner bearing
11	70084277	2	2	CONE ASSEMBLY, inner bearing
12	70622135	2	2	SHAFT, sprocket
13	70069615	2	2	CONE ASSEMBLY, intermediate bearing
14	70069614	2	2	CUP, intermediate bearing
15	70056971	8	8	SHIM, bearing adjustment (.005" thick. Use as required)
	70056970	4	4	SHIM, bearing adjustment (.007" thick. Use as required)
	70056969	24	24	SHIM, bearing adjustment (.010" thick. Use as required)
16	70084349	2	2	CAGE ASSEMBLY, intermediate bearing (Includes item 18)
17	70035018	16	16	CAPSCREW, 1/2"NF x 1-1/2"
	70904208	16	16	LOCKWASHER, 1/2"
18	70084432	6	6	PIN, locating, seal ring
19	70058807	2	2	GASKET, seal ring
20	70081788	4	4	ORING, inner seal (Original equipment)
	70651996	-	4	ORING, inner seal (For service SPROCKET 70654500 only)
21	70058796	2	2	FOLLOWER ASSEMBLY, inner seal (Serviced only as a unit)
22	70058806	2	2	BOOT, inner seal

*1767 45*      *40%*  
*650 cc*  
*900*

*206538*

(Continued)

(Revised December 1979)



FINAL DRIVE SPROCKET, SHAFT AND GEAR (Continued)

ITEM	PART NO.	QTY.	DESCRIPTION
		* **	
23	70084333	2 -	GUARD, seal (Used prior to tractor #5351)
	70056966	2 2	GUARD, seal (Original equipment on tractor #5351 and up)
	70651985	- 2	GUARD, seal (For service SPROCKET 70654500 only)
24	70035221	12 -	CAPSCREW, 1/2"NC x 1" } Used prior to tractor #5351
	70904208	12 -	LOCKWASHER, 1/2" } Effective with tractor #5351
	70035061	8 8	CAPSCREW, 1/2"NC x 1-1/4" } Effective with tractor #5351
	70904208	8 8	LOCKWASHER, 1/2" } Effective with tractor #5351
25	70629048	2 -	SPROCKET, track (If for tractors prior to #5351, also order GUARD 70056966)
	-----	- 2	SPROCKET, track (Original equipment. Order SPROCKET 70654500, 2 RING 70651996, GUARD 70651985) } Standard. Has flat tooth base
	70654500	- 2	SPROCKET, track (Service replacement only)
26	70629267	2 -	SPROCKET, track (If for tractors prior to #5351, also order GUARD 70056966) (See NOTE below)
	70643856	- 2	SPROCKET, track (See NOTE below)
			NOTE: Special. Skeleton tooth-base to minimize packing track.
27	70629270	2 -	RIM, track sprocket } Standard type. Requires welding to install.
	70644100	- 2	RIM, track sprocket } welding to install.
28	70084299	2 2	LOCK, sprocket retaining nut
29	70035221	4 4	CAPSCREW, 1/2"NC x 1"
	70904208	4 4	LOCKWASHER, 1/2"
30	70084236	2 2	NUT, sprocket retaining
31	70054890	- -	SOLVENT, neoprene cement, 1/2 pint can } For cementing boots and gaskets
32	70033288	- -	CEMENT, neoprene, 1/2 pint can } For cementing boots and gaskets
33	70091973	2 2	SEAL KIT (Includes parts for one (1) side only; items 19 thru 22)(For use with original sprockets only)
	70656664	- 2	SEAL KIT (Includes parts for one (1) side only; items 19 thru 22)(For use with service replacement sprockets only)