

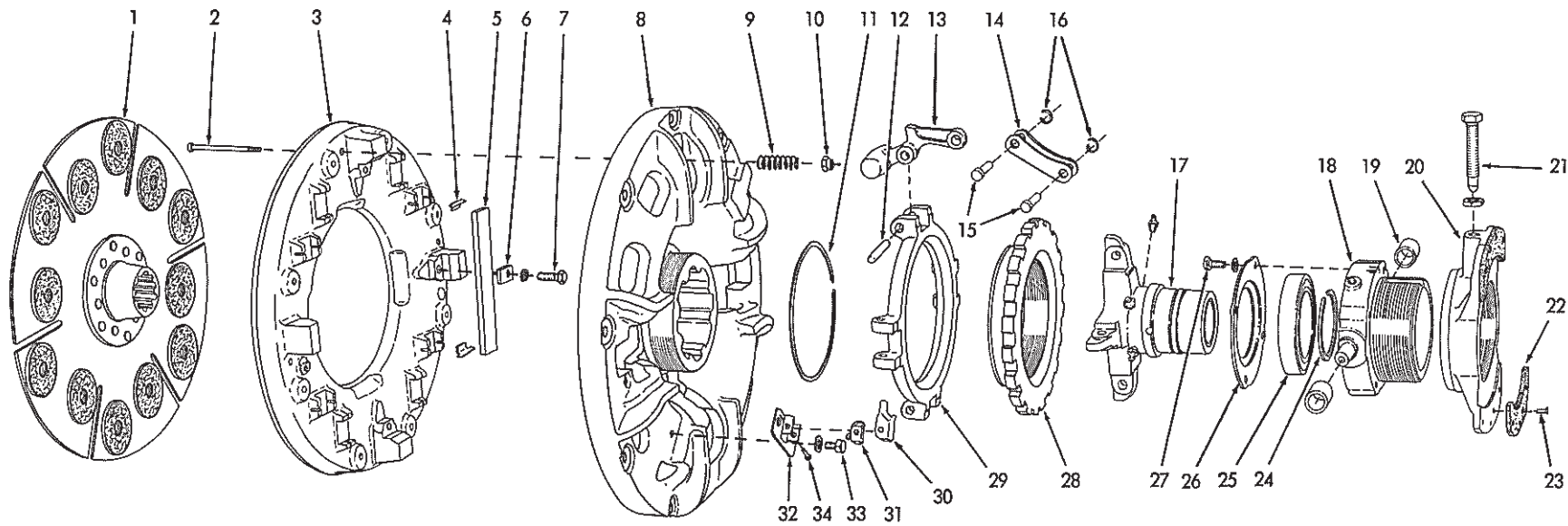
ENGINE CLUTCH AND HOUSING (Dry clutch. Models HD11B, E, ES, S, F)

T-13999

ENGINE CLUTCH AND HOUSING
(Dry Clutch)

USAGE: Model HD11B,E,ES,S,F tractors prior to serial No. 10001. Standard on units prior to serial No. 6911; optional thereafter.

ITEM	PART NO.	QTY.	DESCRIPTION
1	083870	1	CLUTCH ASSEMBLY (See page 217 for parts)
2	921556	9	CAPSCREW, 1/2"NC x 2"
	904208	9	LOCKWASHER, 1/2"
3	082716	1	HOUSING
4	056721	11	CAPSCREW, 3/8"NC x 2-1/2"
5	013058	1	CAPSCREW, 3/8"NC x 1-1/4"
	904206	12	LOCKWASHER, 3/8"
6	050579	1	DISC, brake
7	083270	6	CAPSCREW, 5/16"NF x 5/8"
	904205	6	LOCKWASHER, 5/16"
8	083091	1	SHAFT, clutch
9	083121	1	RETAINER, clutch shaft rear bearing,
10	013058	6	CAPSCREW, 3/8"NC x 1-1/4"
	904206	6	LOCKWASHER, 3/8"
11	042847	1	BEARING, ball, clutch shaft, rear
12	030123	1	WASHER, locking, rear bearing nut
13	030107	1	NUT, clutch shaft rear bearing
14	050647	1	GASKET, rear bearing cap
15	051597	1	CAP, rear bearing (Used prior to tractor # 6069 excluding # 6044 and # 5490)
	099546	1	CAP, rear bearing (Effective with tractor # 6069 including # 6044 and # 5490)
16	914465	1	FITTING, lubricating, straight, 1/8"NPT
	901763	1	COUPLING, pipe, 1/8"NPT
	901475	1	NIPPLE, pipe, 1/8"NPT x 5"
	035733	4	CAPSCREW, 1/2"NC x 1-3/8"
	904208	4	LOCKWASHER, 1/2"
17	081140	1	PLATE, engine clutch inspection
18	035439	2	CAPSCREW, 3/8"NC x 1"
	904206	2	LOCKWASHER, 3/8"
19	013058	2	CAPSCREW, 3/8"NC x 1-1/4"
	904206	2	LOCKWASHER, 3/8"
	044973	2	WASHER, plain
20	053899	2	HOSE, lubricating, clutch shifting bearing (10-1/2" long)
	911100	1	WASHER, plain, SAE std., 5/8" (Used prior to tractor #6069 excluding #6044 and #5490)
	064810	1	WASHER, plain (Effective with tractor # 6069 including # 6044 and # 5490)
	911049	2	NUT, jam, 5/8"NF
	914465	1	FITTING, lubricating, straight, 1/8"NPT (Used prior to tractor #6069 excluding #6044 and #5490)
	915276	1	FITTING, lubricating, 90°, 1/8"NPT (Effective with tractor #6069 including #6044 and #5490)
	907059	1	ELBOW, street, 90°, 1/8"NPT
21	099133	1	BEARING, ball, clutch shaft, front



CLUTCH ASSEMBLY 083870

CLUTCH ASSEMBLY 083870

USAGE: See page 215

ITEM	PART NO.	QTY.	DESCRIPTION
1	082910	1	PLATE ASSEMBLY, drive (Has Ceramic friction discs)
2	073926	4	SCREW, retracting spring (fil-hd., 5/16"NF x 3-3/8")
3	073919	1	PLATE, pressure
4	073920	8	PAD, wear
5	073921	4	BEAM, actuating lever
6	073922	4	PLATE, beam retaining
7	036034	4	CAPSCREW, 3/8"NF x 1"
	904206	4	LOCKWASHER, 3/8"
8	073899	1	PLATE, back
9	078667	4	SPRING, pressure plate retracting
10	073927	4	NUT, retracting spring screw (self-locking, 5/16"NF)
11	073916	1	RING, plate retaining
12	073918	4	PIN, actuating lever
13	073917	4	LEVER, actuating
14	073923	4	LINK, actuating lever
15	073924	8	PIN, actuating lever link
16	073925	8	RING, pin retaining
17	083145	1	SLEEVE ASSEMBLY, shifting (Includes 2 bushings which are not serviced separately and 4 FITTINGS 914465)
	914465	4	FITTING, lubricating, straight, 1/8"NPT
18	083143	1	CARRIER ASSEMBLY, shifter bearing (Includes item 19)
19	056864	2	RACE, shifting yoke needle bearing
20	083135	1	PLATE ASSEMBLY, clutch brake (Includes item 22)
21	083149	1	SCREW, brake plate locking
	913830	1	NUT, jam, 1/2"NF
22	083134	1	FACING KIT, brake plate (Includes item 23)
23	083136	8	RIVET, brake plate facing
24	073908	1	RING, snap, bearing retaining
25	061490	1	BEARING, ball, clutch shifting
26	073907	1	PLATE, bearing retaining
27	045312	4	CAPSCREW, 5/16"NC x 3/4"
	904205	4	LOCKWASHER, 5/16"
28	073914	1	RING, adjusting
29	073915	1	PLATE, adjusting ring
30	073901	1	LOCK, adjustment
31	048375	1	SPRING, adjustment lock
32	073903	1	BRACKET, adjustment lock
33	035979	2	CAPSCREW, 3/8"NF x 5/8"
	911115	2	WASHER, plain, SAE std., 3/8"
34	073902	1	PIN, adjustment lock

60155